

PCTEST ENGINEERING LABORATORY, INC.

DUT: Dipole 5200 MHz; Type: D5GHzV2; Serial: 1007

Communication System: CW; Frequency: 5200 MHz; Duty Cycle: 1:1

Medium: 5300 Brain ($\sigma = 4.86$ mho/m, $\epsilon_r = 36.10$, $\rho = 1000$ kg/m³)

Phantom section: Flat Section

Test Date: 05-10-2005; Ambient Temp: 23.8°C; Tissue Temp: 20.9°C

Probe: EX3DV4 - SN3550; ConvF(4.17, 4.17, 4.17); Calibrated: 10/26/2004

Sensor-Surface: 3mm (Mechanical Surface Detection)

Electronics: DAE4 Sn637; Calibrated: 9/22/2004

Phantom: SAM 12b; Type: SAM 4.0; Serial: TP:1197

Measurement SW: DASY4, V4.5 Build 19; Postprocessing SW: SEMCAD, V1.8 Build 146

5200MHz Dipole Validation

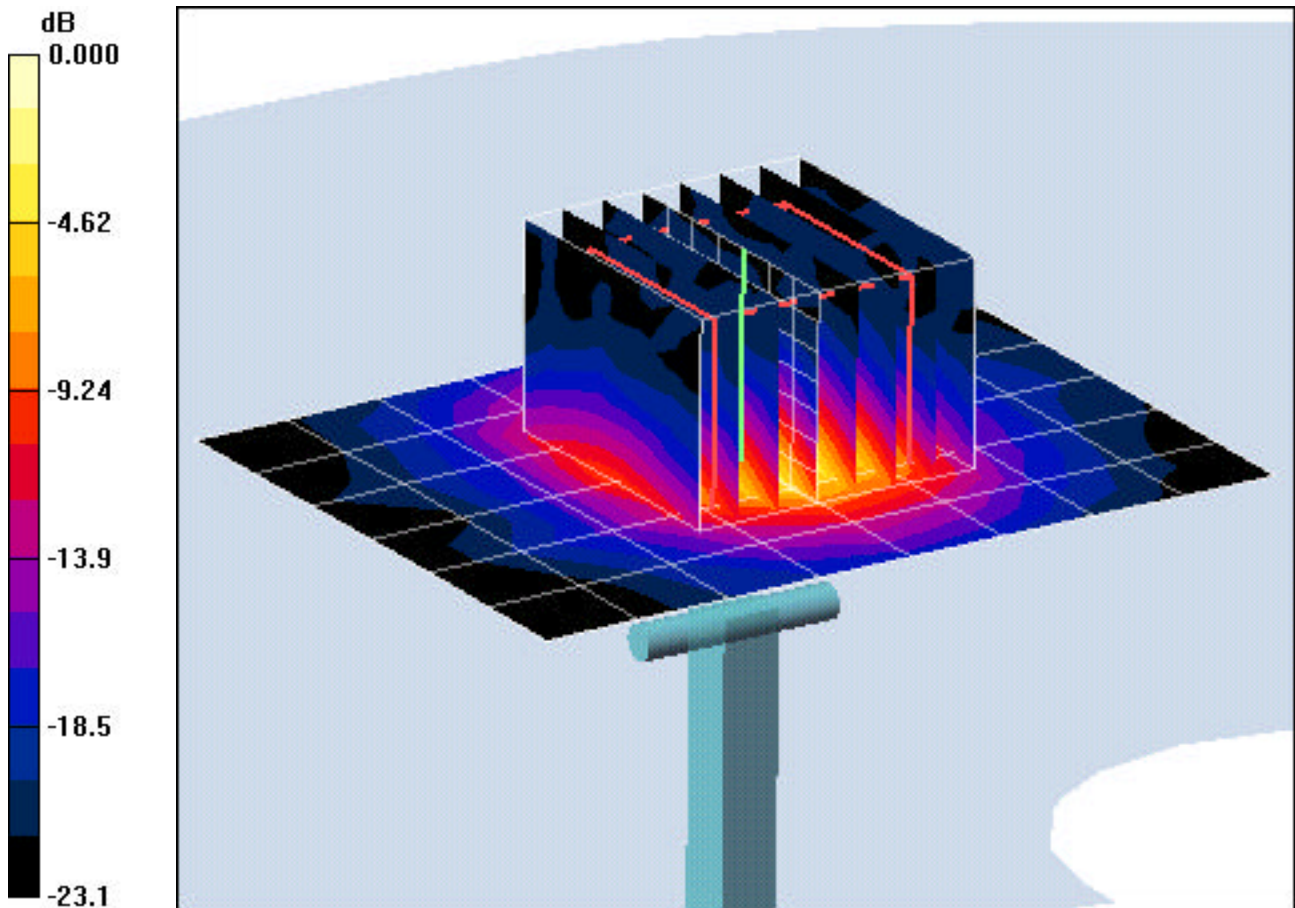
Area Scan (7x9x1): Measurement grid: dx=10mm, dy=10mm

Zoom Scan (8x8x8)/Cube 0: Measurement grid: dx=4.3mm, dy=4.3mm, dz=3mm

Input Power = 14.0 dBm (25 mW)

SAR(1 g) = 2.26 mW/g; SAR(10 g) = 0.796 mW/g

Target SAR(1g) = 2.17 mW/g; Deviation = +4.14 %



0 dB = 3.64mW/g

PCTEST ENGINEERING LABORATORY, INC.

DUT: Dipole 5200 MHz; Type: D5GHzV2; Serial: 1007

Communication System: CW; Frequency: 5200 MHz; Duty Cycle: 1:1

Medium: 5300 Brain ($\sigma = 4.86$ mho/m, $\epsilon_r = 36.10$, $\rho = 1000$ kg/m³)

Phantom section: Flat Section

Test Date: 05-11-2005; Ambient Temp: 23.6°C; Tissue Temp: 20.8°C

Probe: EX3DV4 - SN3550; ConvF(4.17, 4.17, 4.17); Calibrated: 10/26/2004

Sensor-Surface: 3mm (Mechanical Surface Detection)

Electronics: DAE4 Sn637; Calibrated: 9/22/2004

Phantom: SAM 12b; Type: SAM 4.0; Serial: TP:1197

Measurement SW: DASY4, V4.5 Build 19; Postprocessing SW: SEMCAD, V1.8 Build 146

5200MHz Dipole Validation

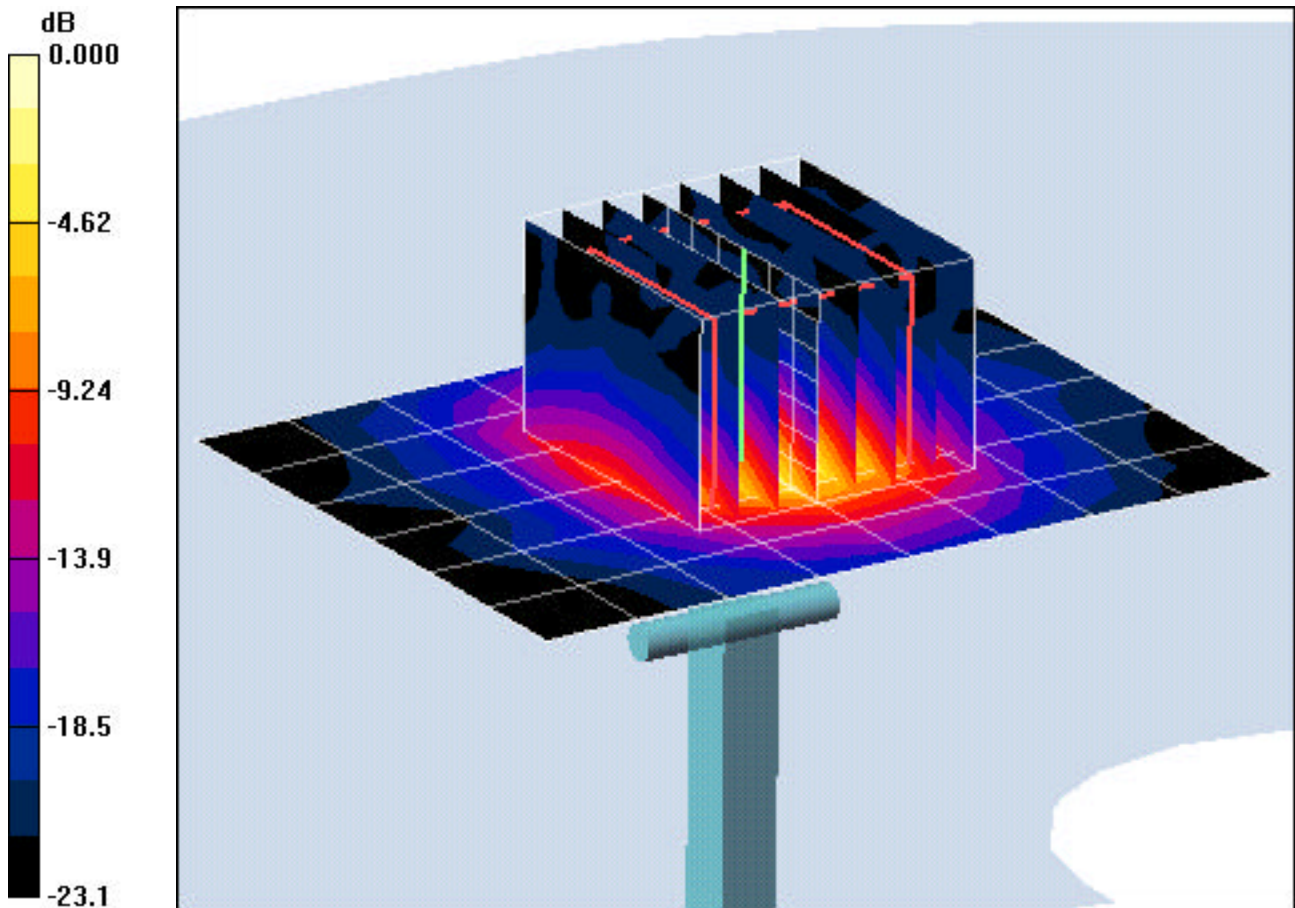
Area Scan (7x9x1): Measurement grid: dx=10mm, dy=10mm

Zoom Scan (8x8x8)/Cube 0: Measurement grid: dx=4.3mm, dy=4.3mm, dz=3mm

Input Power = 14.0 dBm (25 mW)

SAR(1 g) = 2.29 mW/g; SAR(10 g) = 0.843 mW/g

Target SAR(1g) = 2.17 mW/g; Deviation = +5.52 %



0 dB = 3.56mW/g

PCTEST ENGINEERING LABORATORY, INC.

DUT: Dipole 5200 MHz; Type: D5GHzV2; Serial: 1007

Communication System: CW; Frequency: 5200 MHz; Duty Cycle: 1:1

Medium: 5300 Brain ($\sigma = 4.79$ mho/m, $\epsilon_r = 35.81$, $\rho = 1000$ kg/m³)

Phantom section: Flat Section; Space: 1.0 cm

Test Date: 07-20-2005; Ambient Temp: 23.5°C; Tissue Temp: 20.6°C

Probe: EX3DV4 - SN3550; ConvF(4.17, 4.17, 4.17); Calibrated: 10/26/2004

Sensor-Surface: 3mm (Mechanical Surface Detection)

Electronics: DAE4 Sn637; Calibrated: 9/22/2004

Phantom: SAM Sub; Type: SAM 4.0; Serial: TP:1357

Measurement SW: DASY4, V4.5 Build 19; Postprocessing SW: SEMCAD, V1.8 Build 146

5200MHz Dipole Validation

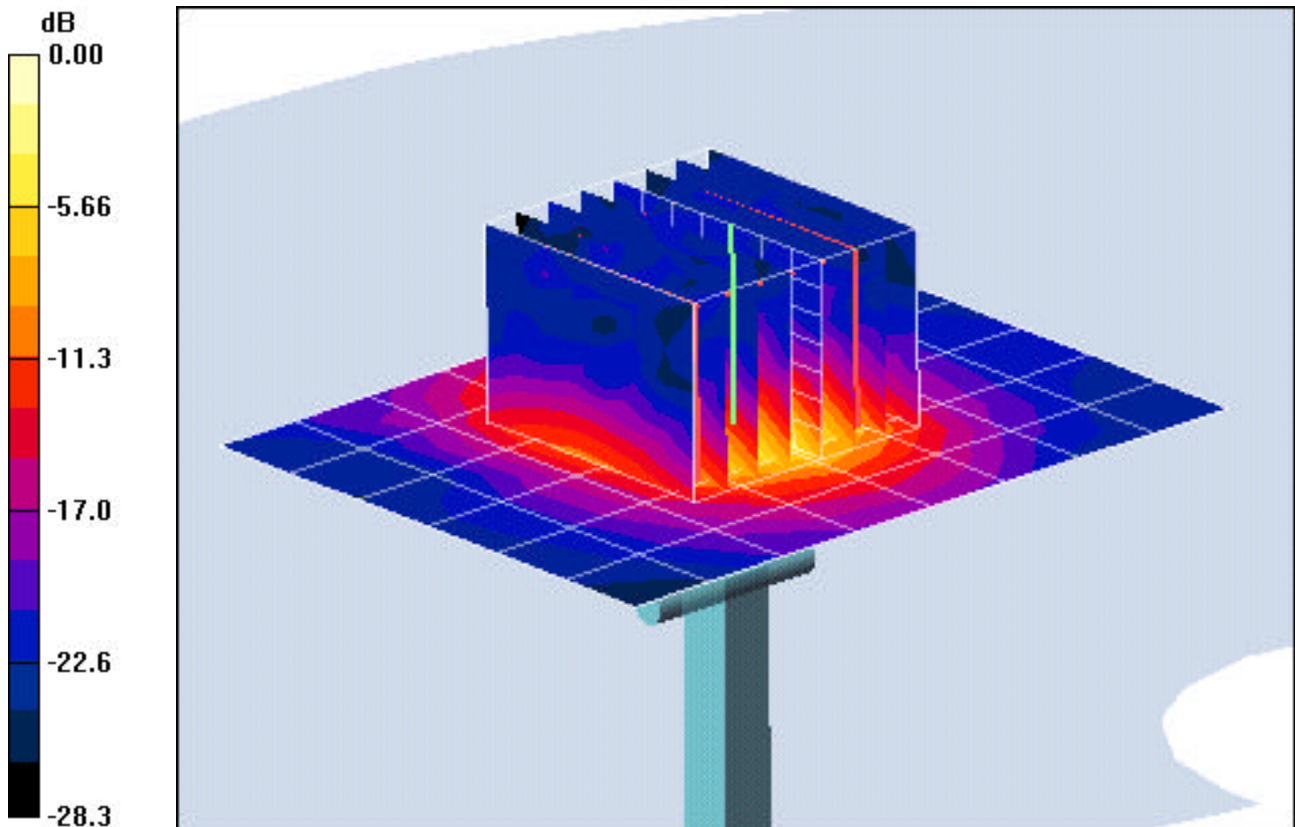
Area Scan (7x9x1): Measurement grid: dx=10mm, dy=10mm

Zoom Scan (8x8x8)/Cube 0: Measurement grid: dx=4.3mm, dy=4.3mm, dz=3mm

Input Power = 14.0 dBm (25 mW)

SAR(1 g) = 2.09 mW/g; SAR(10 g) = 0.593 mW/g

Target SAR(1g) = 2.17 mW/g; Deviation = -3.68 %



0 dB = 2.96mW/g