

Antenna separation distance.

Per KDB 447498 D01 Mobile Portable RF Exposure v04, 8 (a) (ii) states:

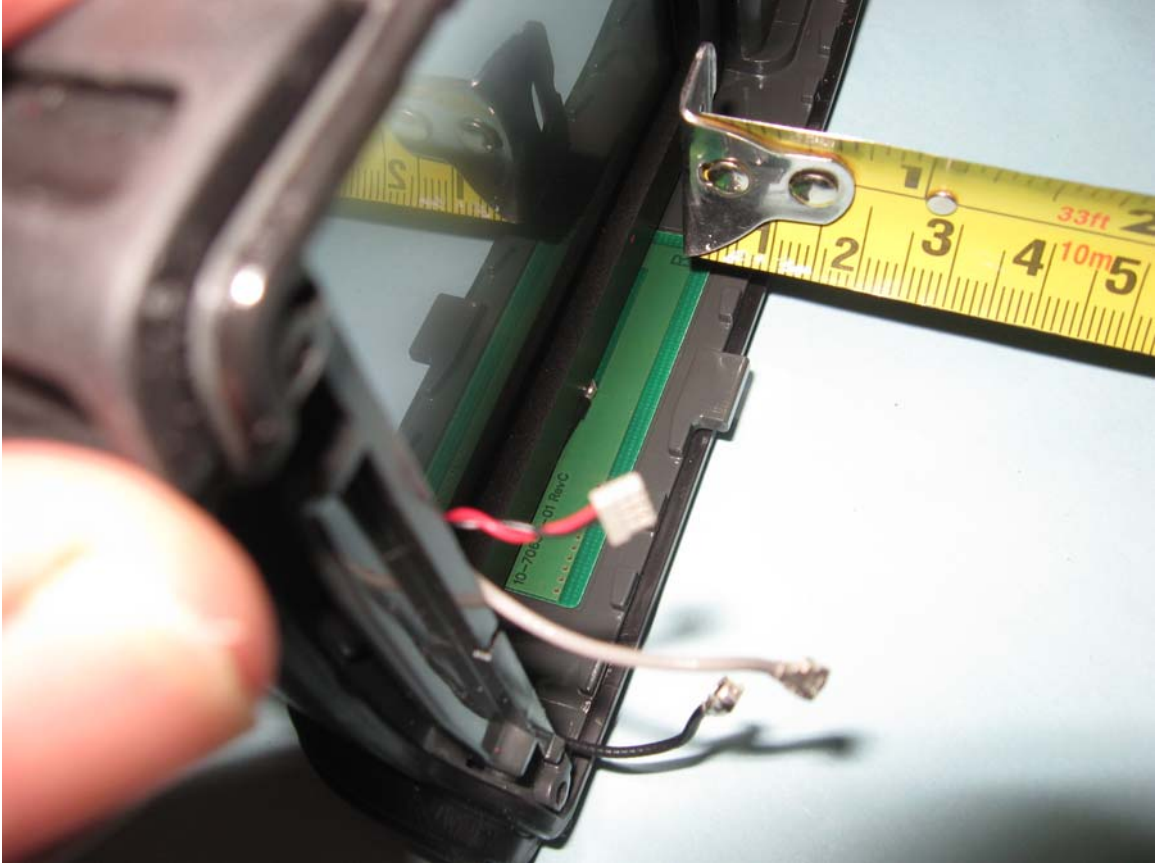
The antenna separation distance and MPE compliance boundary requirements that enable all simultaneous transmitting antennas incorporated within the host to comply with MPE limits are specified in the application filing of at least one of the certified transmitters incorporated in the host device.³³ In addition, when transmitters certified for portable use are incorporated in a mobile host device the antenna(s) must be ≥ 5 cm from all other simultaneous transmitting antennas.

The unit complies with the MPE limits and in addition the following photos show the antenna separations to be ≥ 5 cm between the transmitting antennas.

Photo 1 shows the original antennas for the unit are on the side of the unit with the closest part of the antenna 1 cm from the case seam.

Photo 2 shows the distance from the RFID antenna housing to the seam is just slightly over 4 cm measuring from the closest point of the antenna housing. This does not take into account the antenna “housing” which would add a little more separation distance.

Together the photos and the antenna housing show that the separation for the antennas is approximately 5.1cm which complies with the ≥ 5 cm requirement.



Photograph 1



Photograph 2