

Symbol Technologies, Model No: MC9063

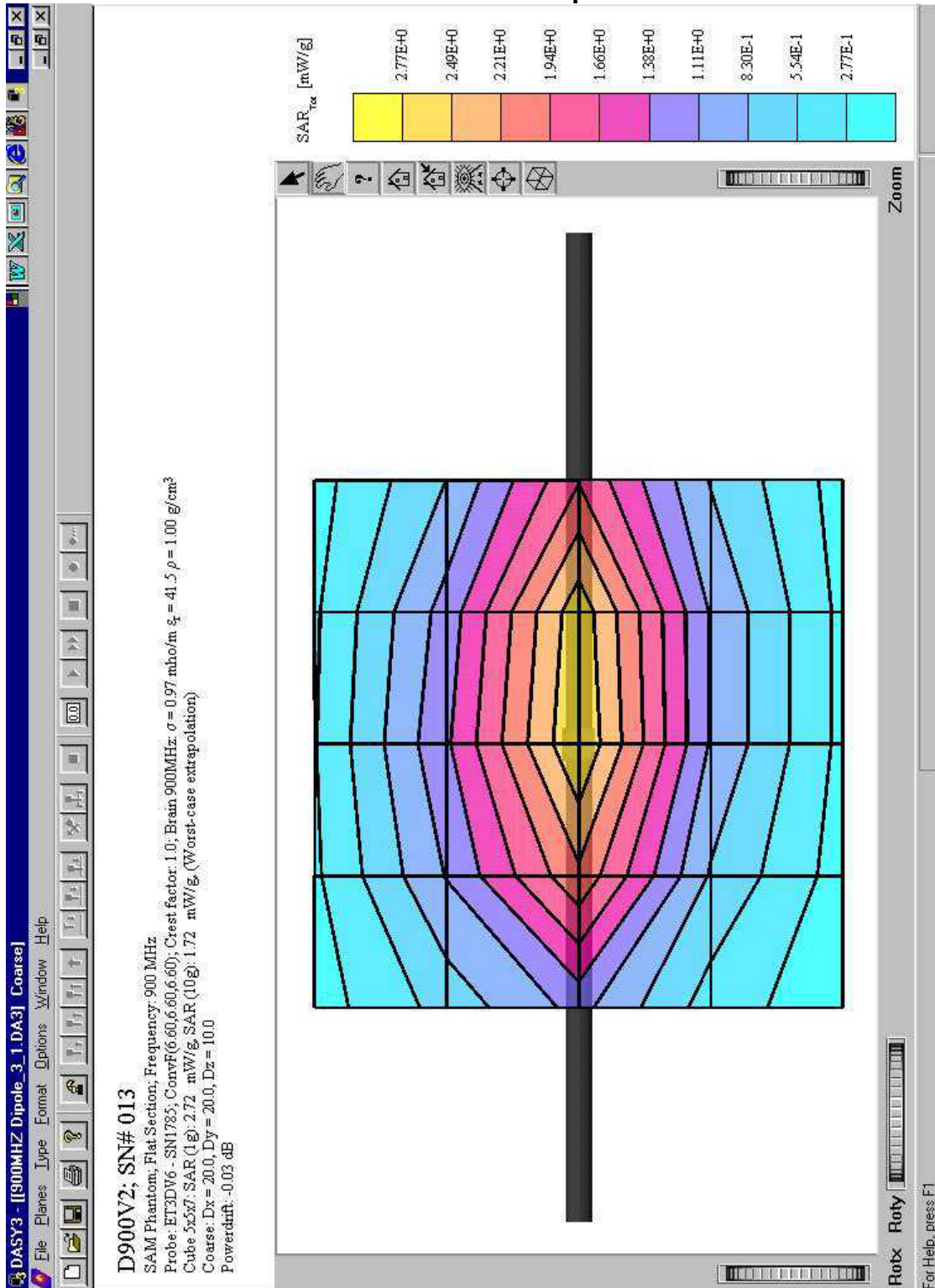
1.0 GRAPHICAL TEST RESULTS

Please note that the graphical visualization of the device position onto the SAR distribution gives only limited information on the current distribution of the device, since the curvature of the head results in graphical distortion. Full information can only be obtained either by H-field scans in free space or SAR evaluation with a flat phantom.

Symbol Technologies, Model No: MC9063

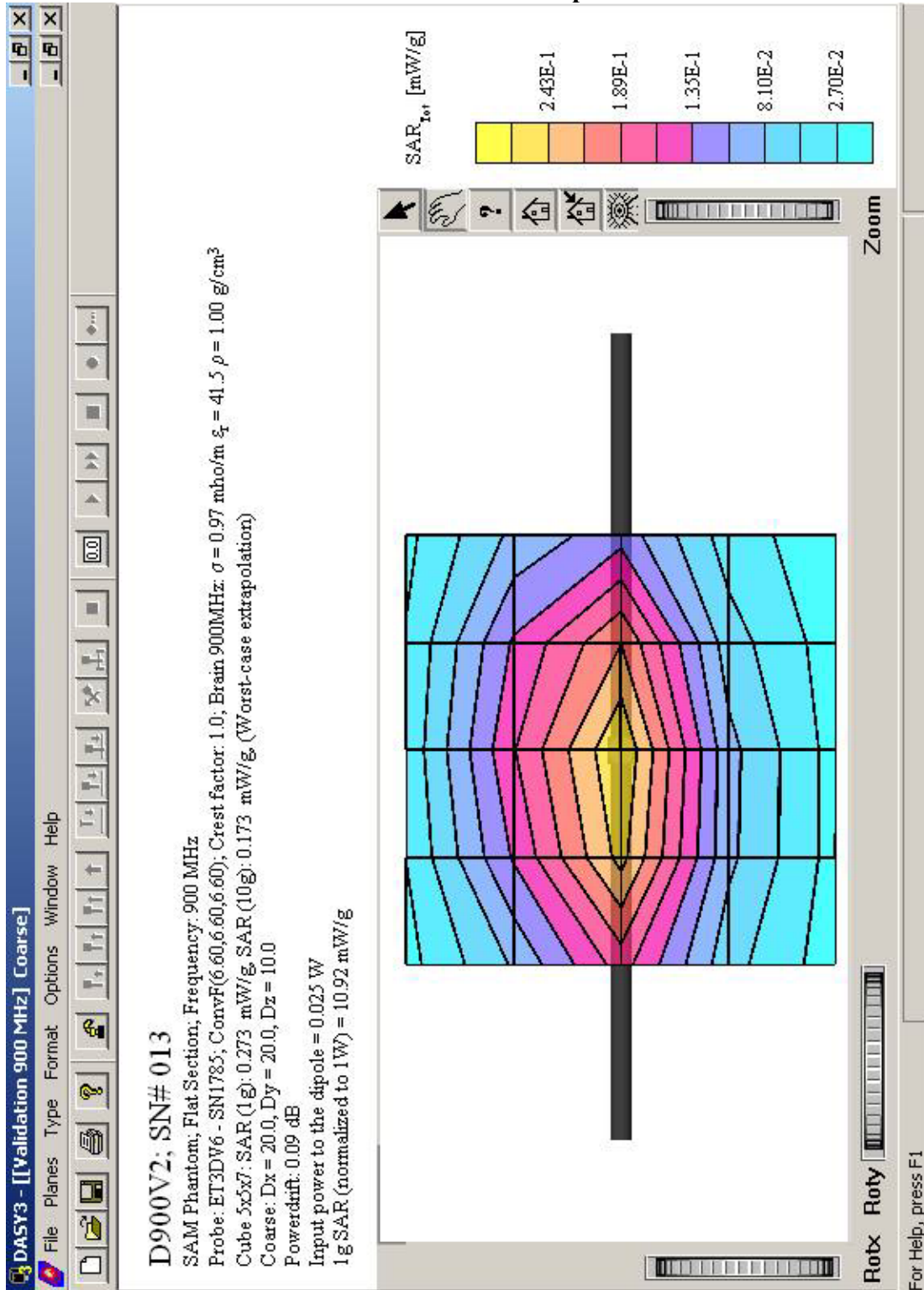
SAR PLOTS FOR SYSTEM VERIFICATION

Exhibit 1: 900 MHz Dipole Validation



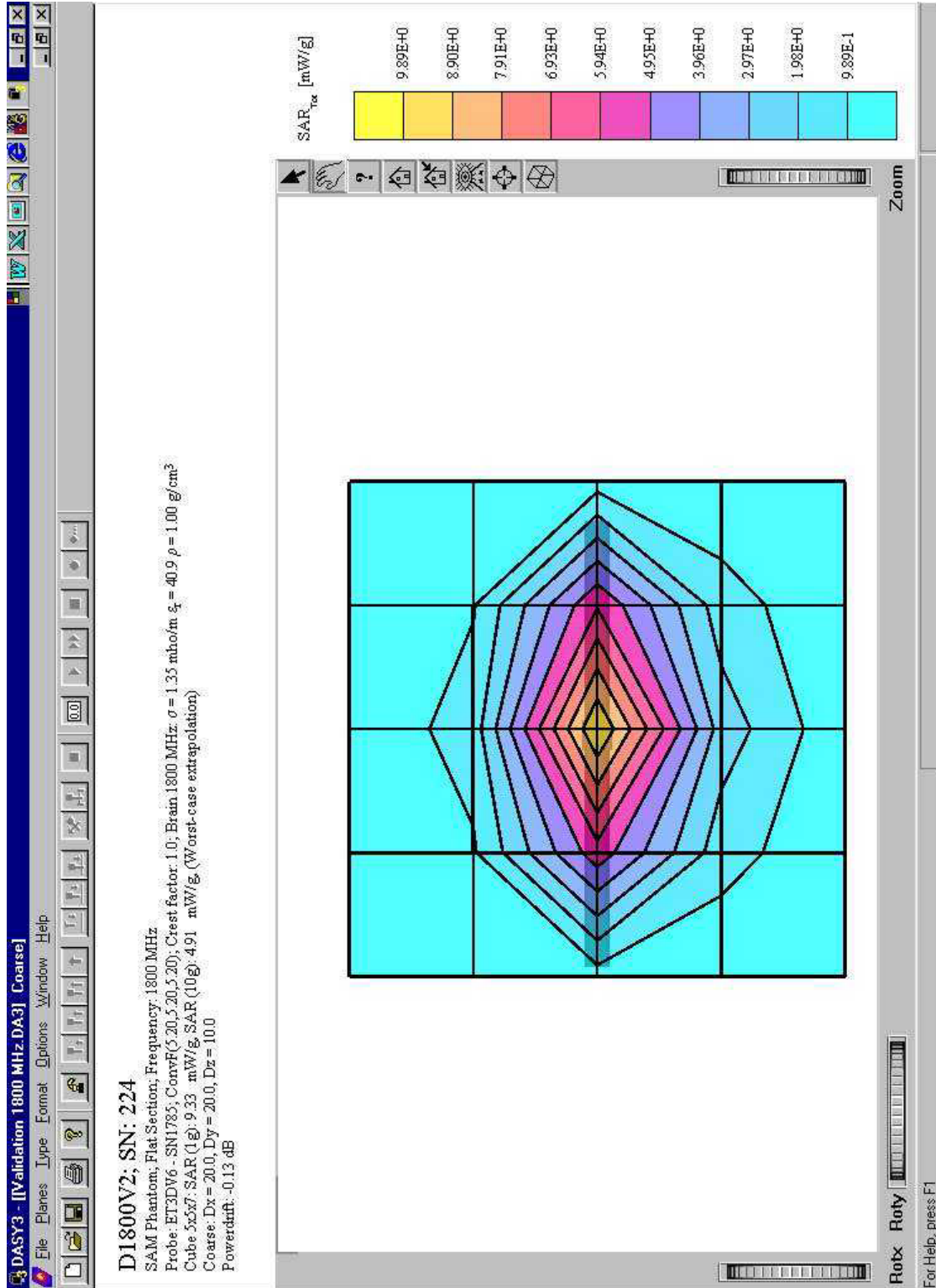
Symbol Technologies, Model No: MC9063

Exhibit 2: 900 MHz Dipole Validation



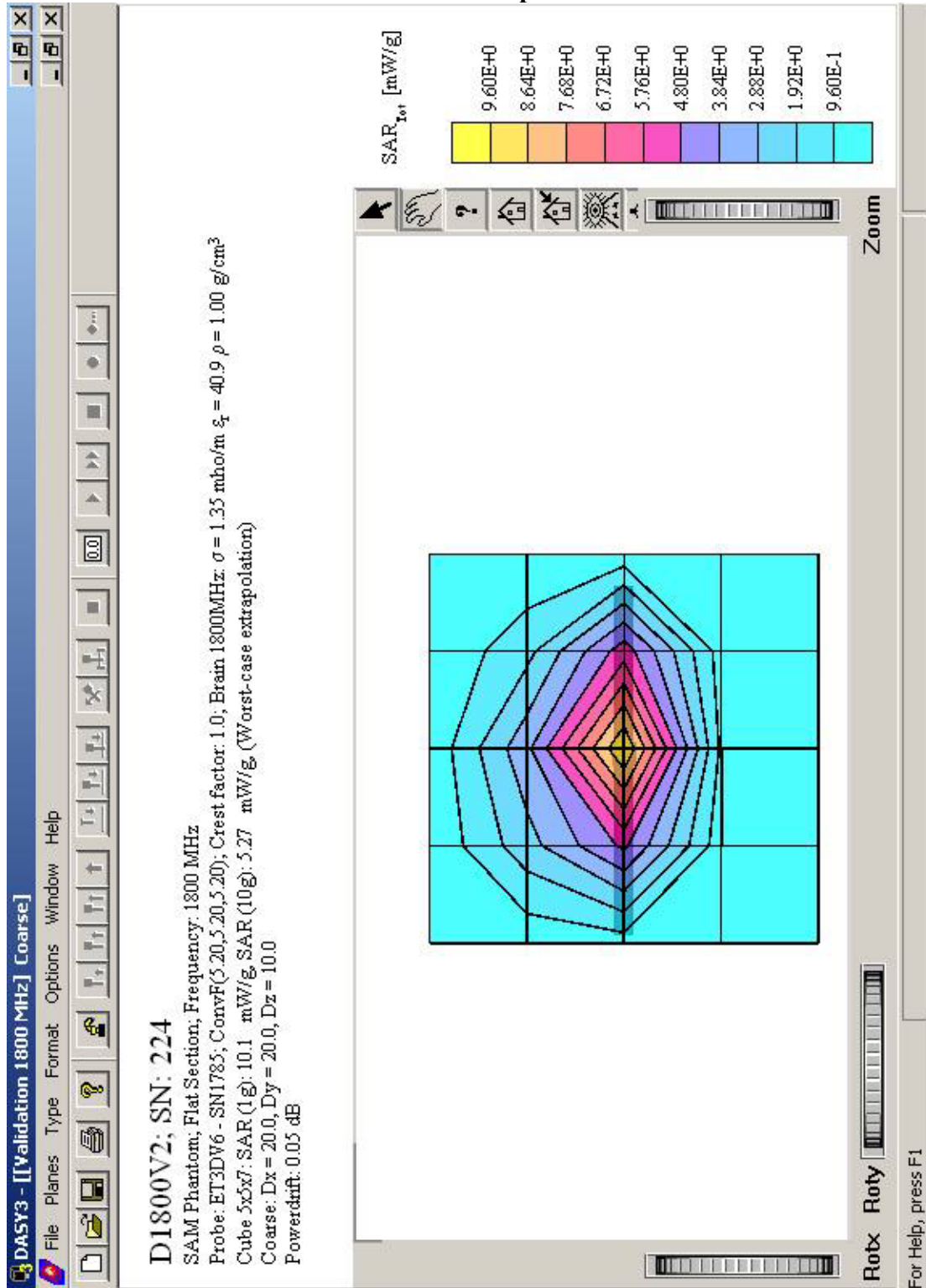
Symbol Technologies, Model No: MC9063

Exhibit 3: 1800 MHz Dipole Validation



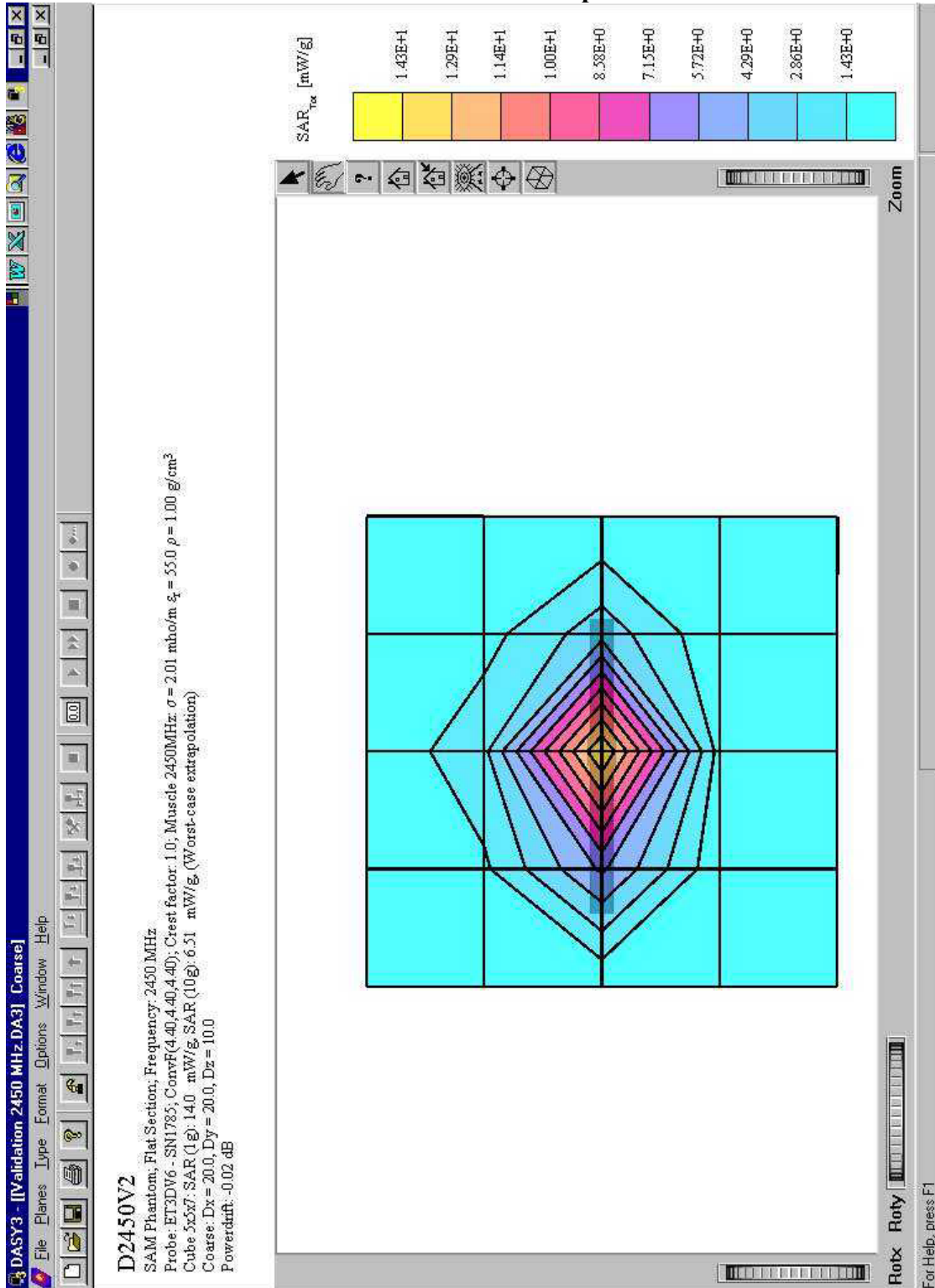
Symbol Technologies, Model No: MC9063

Exhibit 4: 1800 MHz Dipole Validation



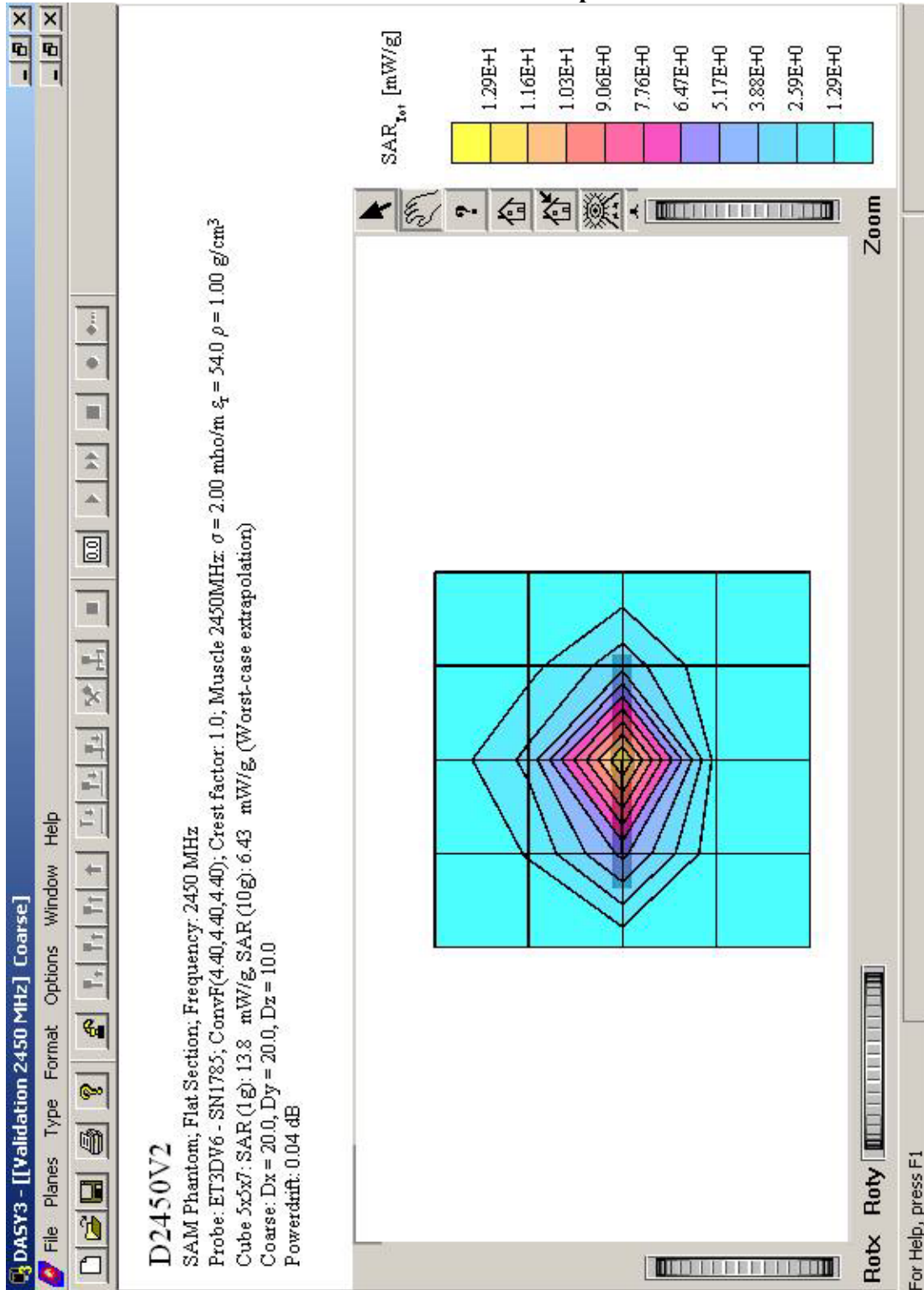
Symbol Technologies, Model No: MC9063

Exhibit 5: 2450 MHz Dipole Validation



Symbol Technologies, Model No: MC9063

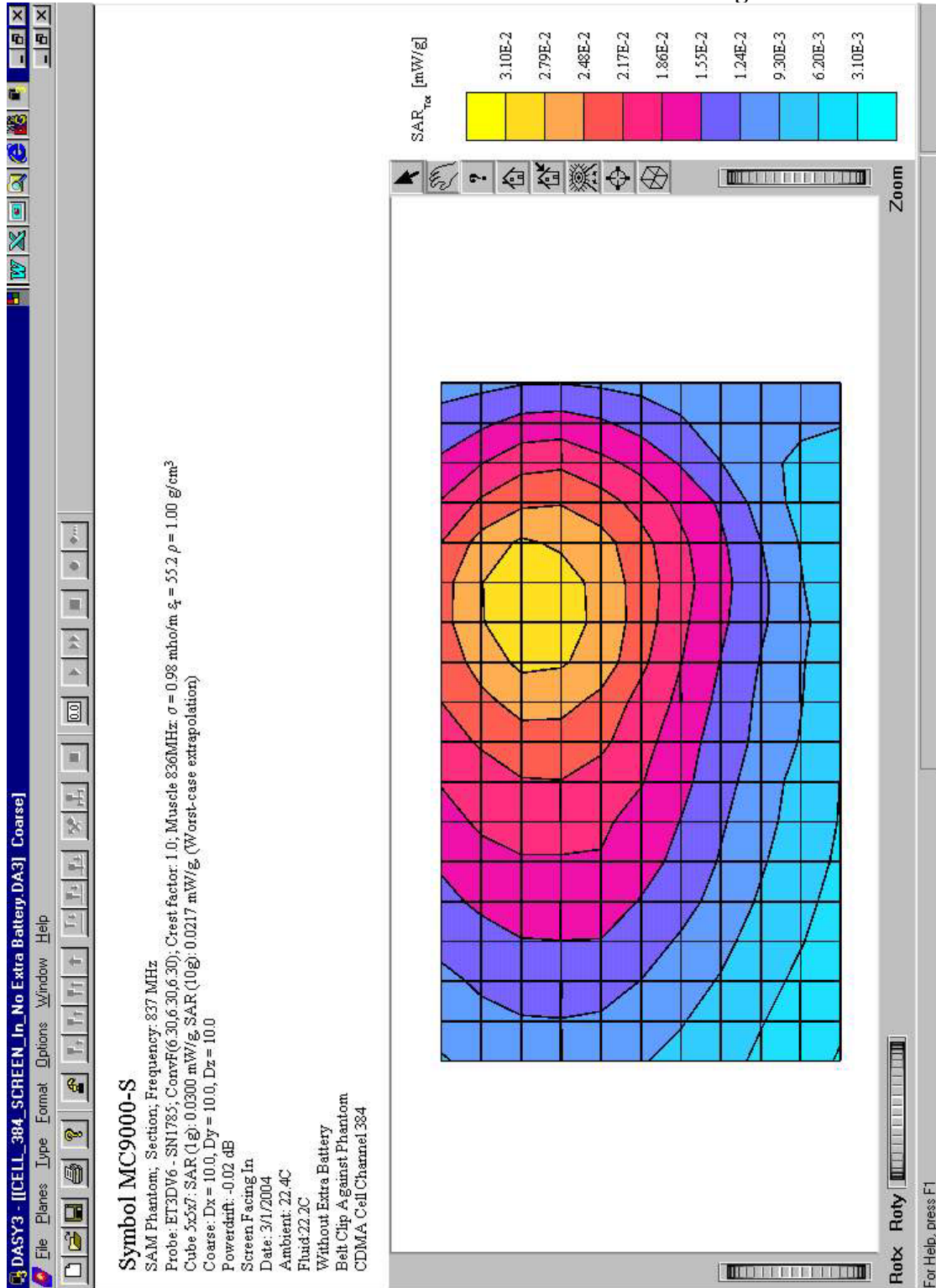
Exhibit 6: 2450 MHz Dipole Validation



Symbol Technologies, Model No: MC9063

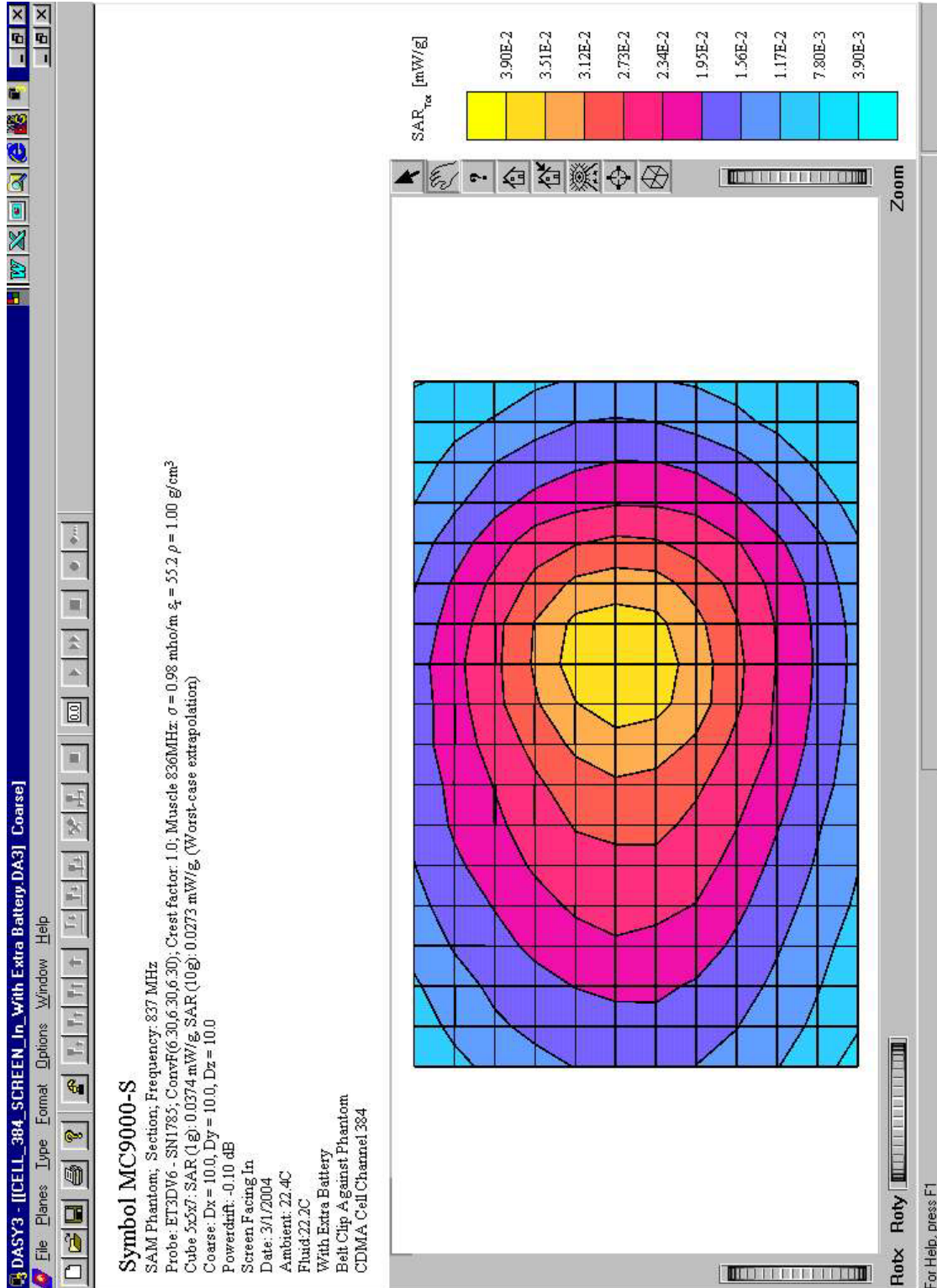
SAR PLOTS FOR CDMA CELL AND PCS BANDS

Exhibit 7: CDMA Cell Channel 384 Screen Facing In



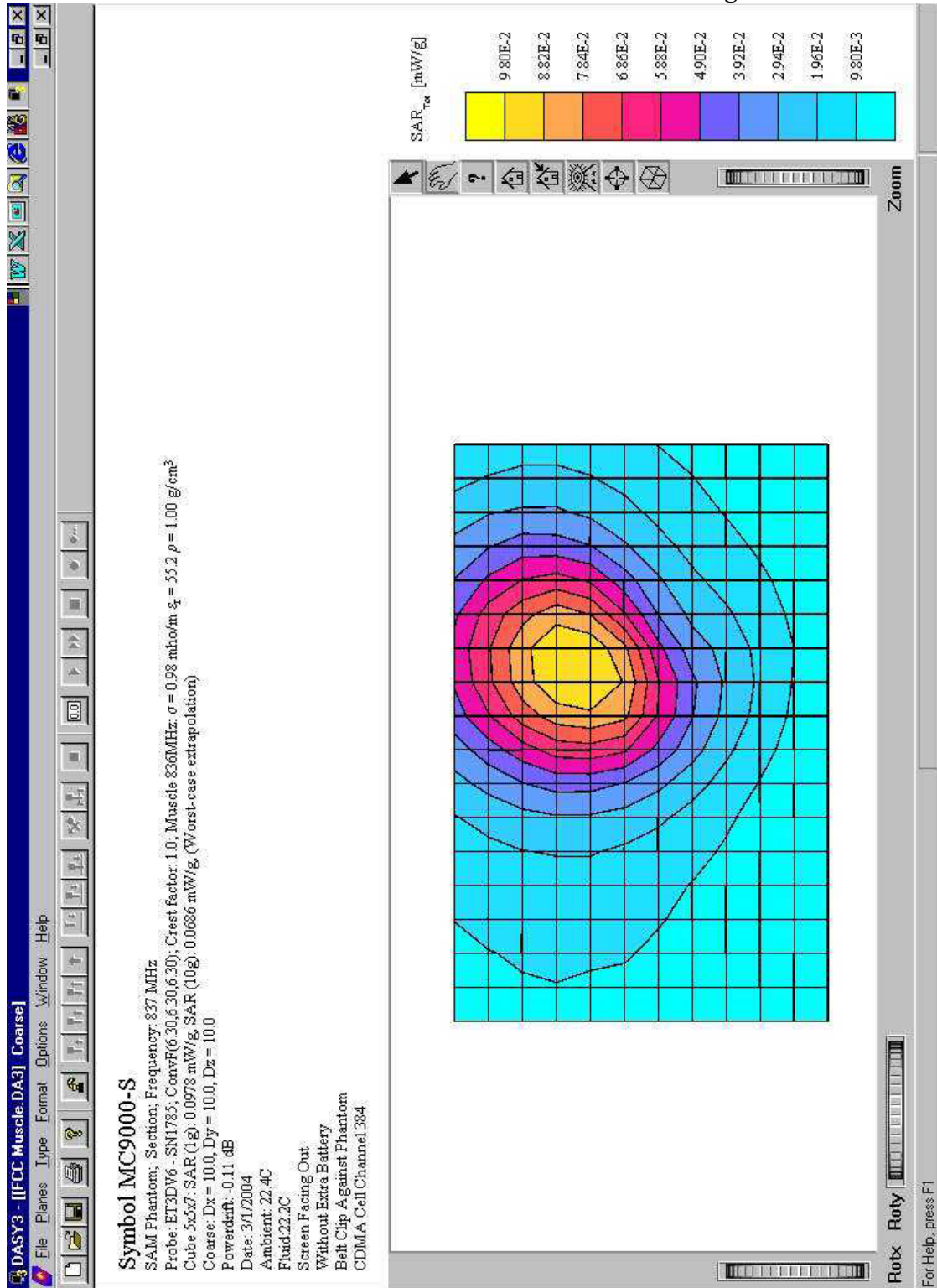
Symbol Technologies, Model No: MC9063

Exhibit 8: CDMA Cell Channel 384 Screen Facing In With Extra Battery



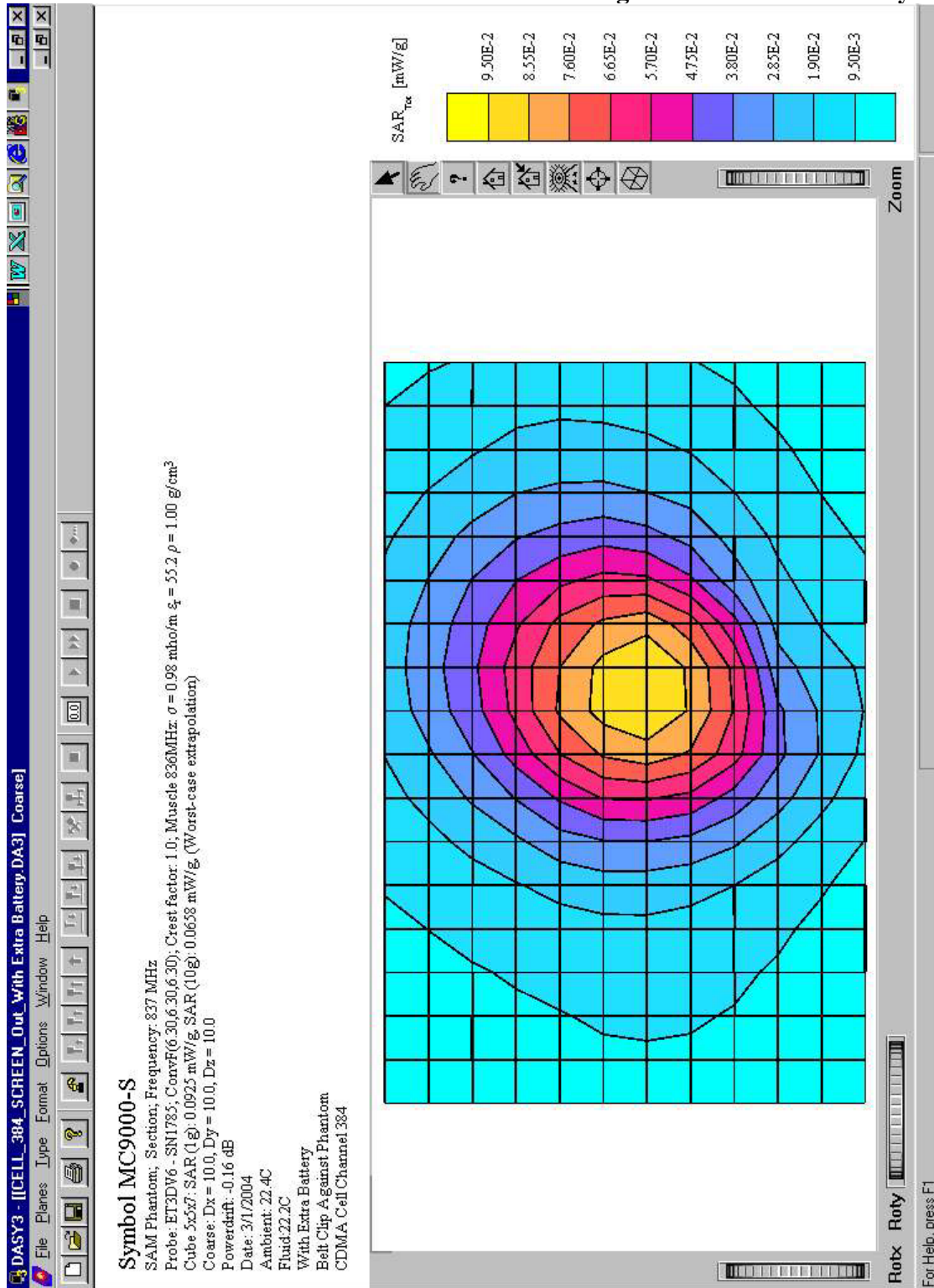
Symbol Technologies, Model No: MC9063

Exhibit 9: CDMA Cell Channel 384 Screen Facing Out



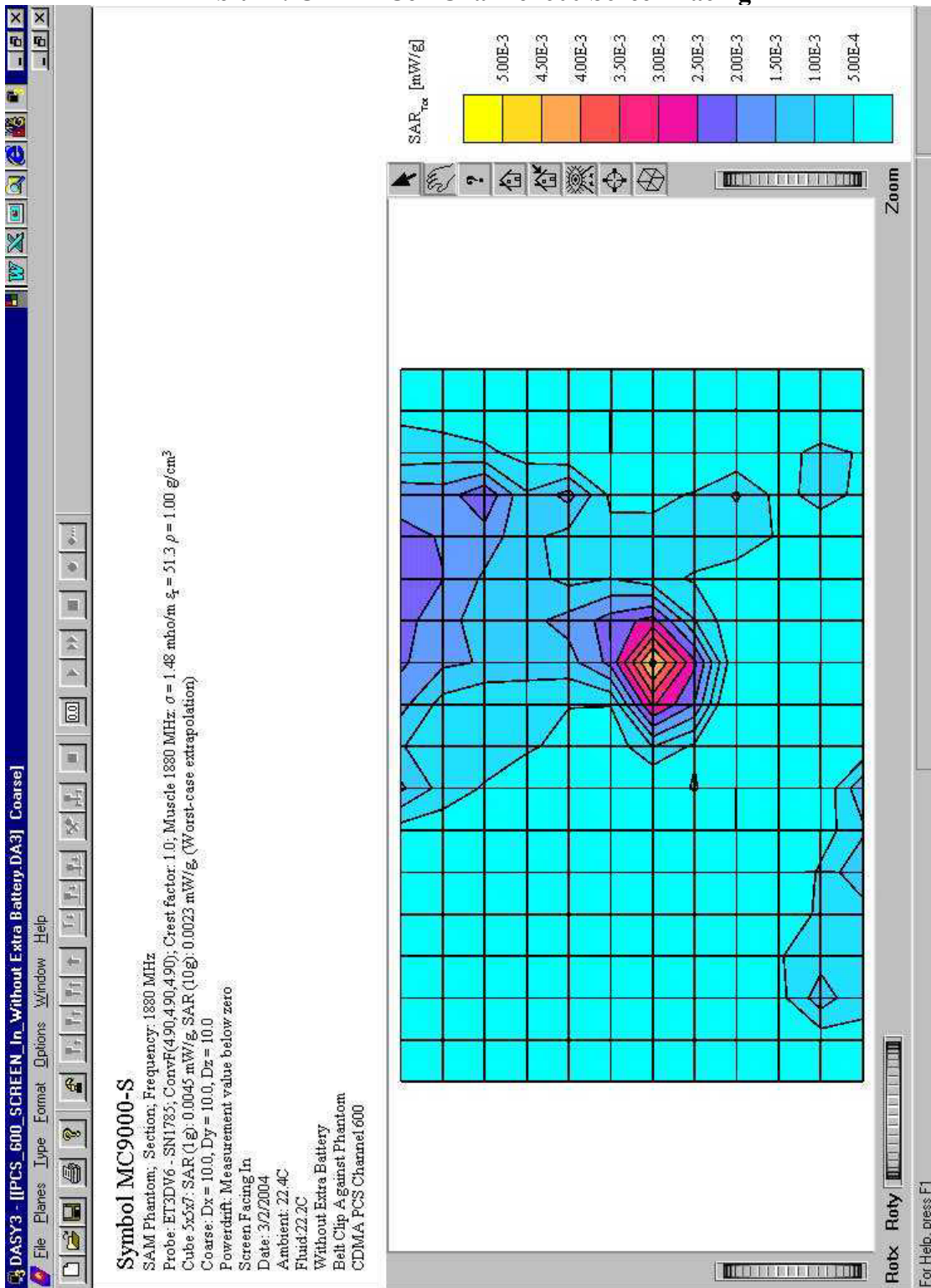
Symbol Technologies, Model No: MC9063

Exhibit 10: CDMA Cell Channel 384 Screen Facing Out With Extra Battery



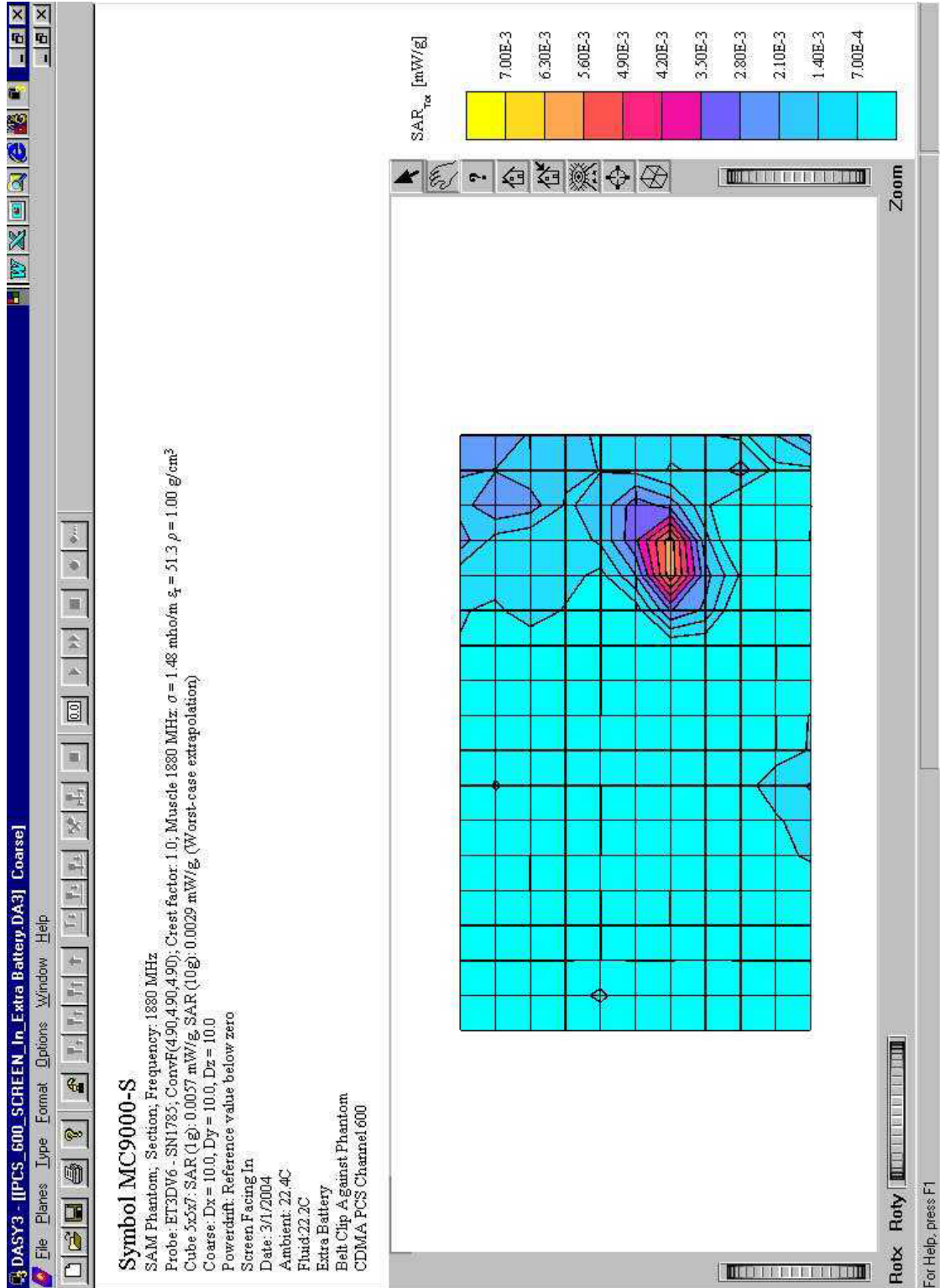
Symbol Technologies, Model No: MC9063

Exhibit 11: CDMA Cell Channel 600 Screen Facing In



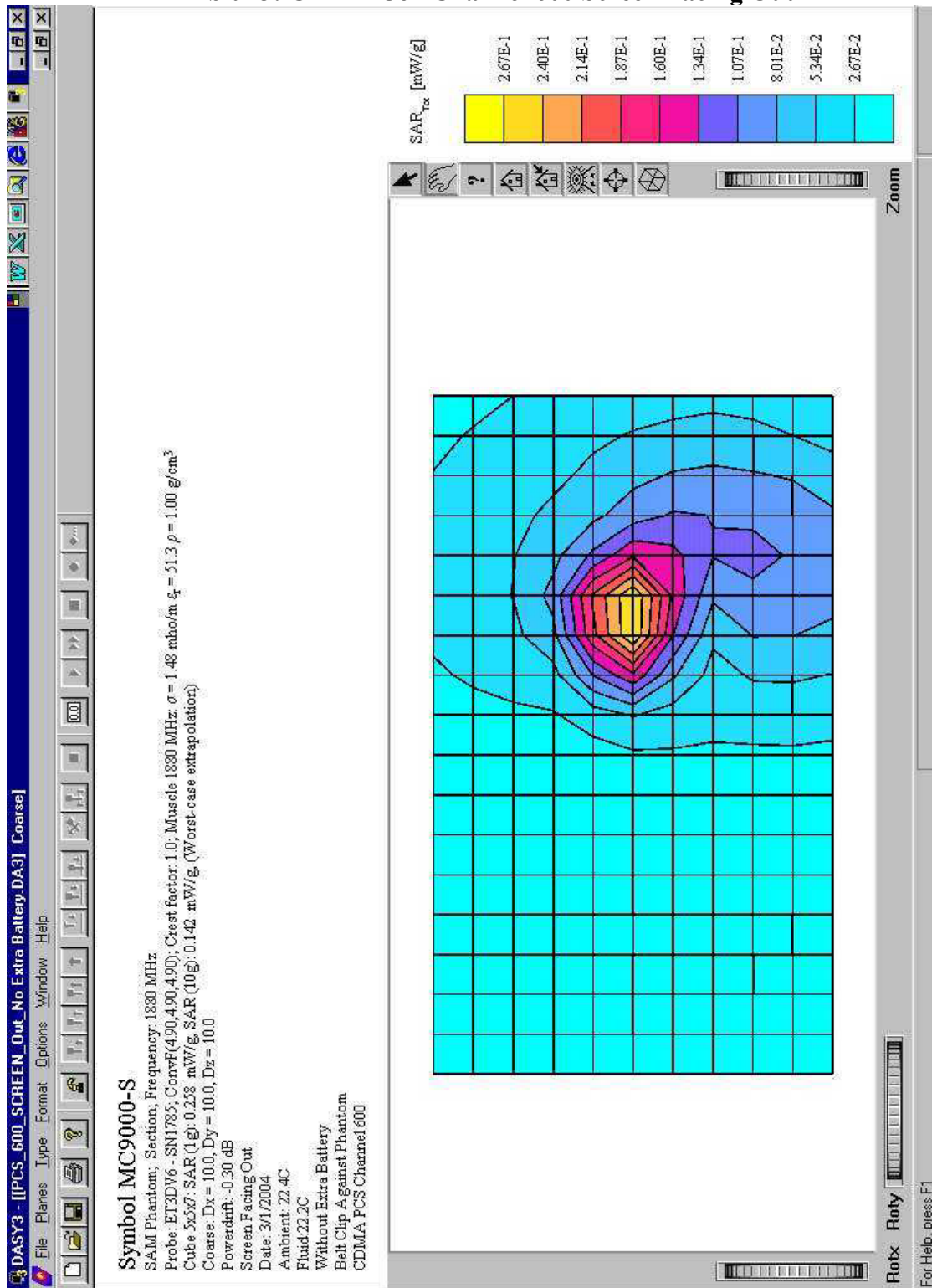
Symbol Technologies, Model No: MC9063

Exhibit 12: CDMA Cell Channel 600 Screen Facing In With Extra Battery



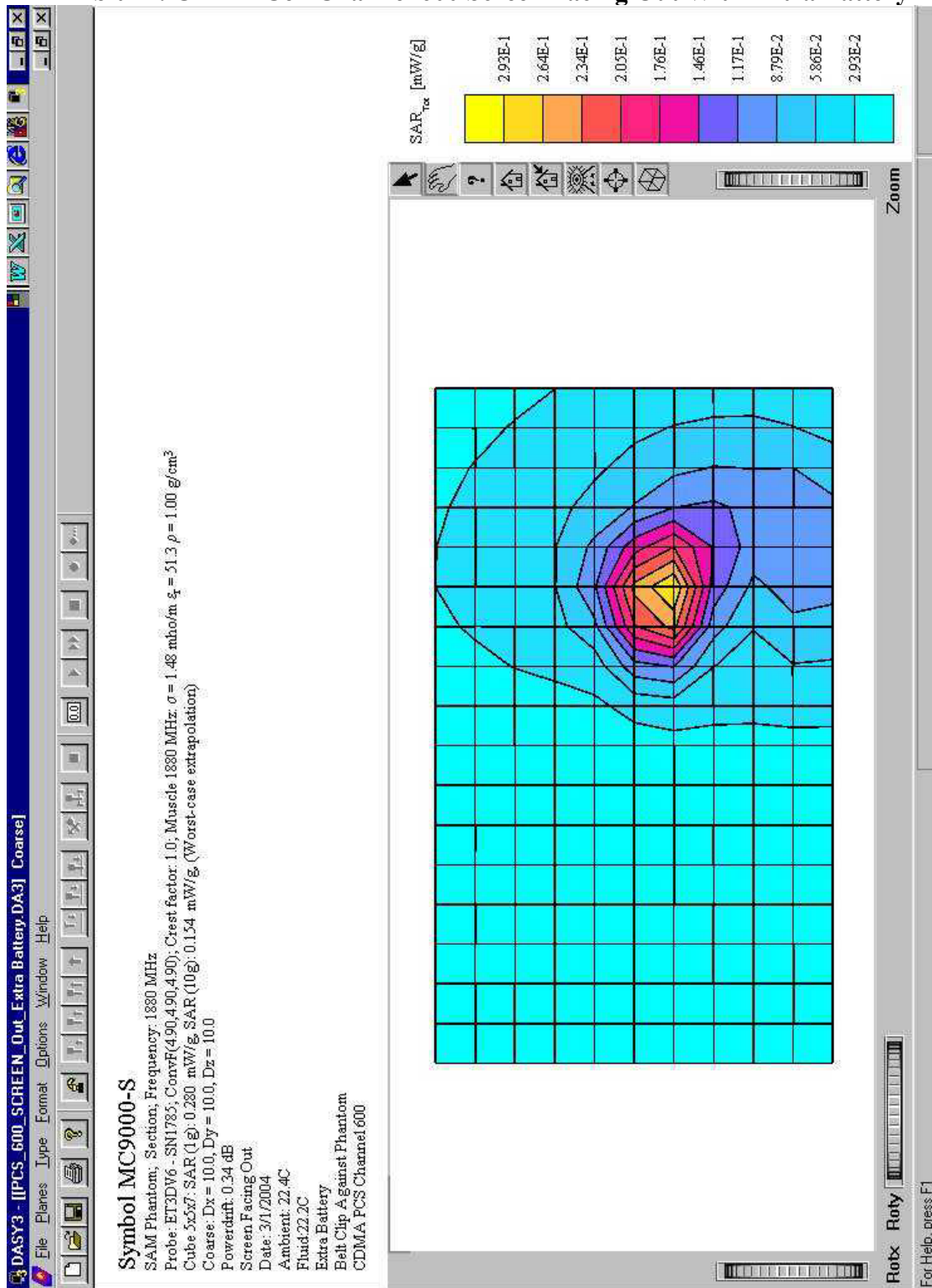
Symbol Technologies, Model No: MC9063

Exhibit 13: CDMA Cell Channel 600 Screen Facing Out



Symbol Technologies, Model No: MC9063

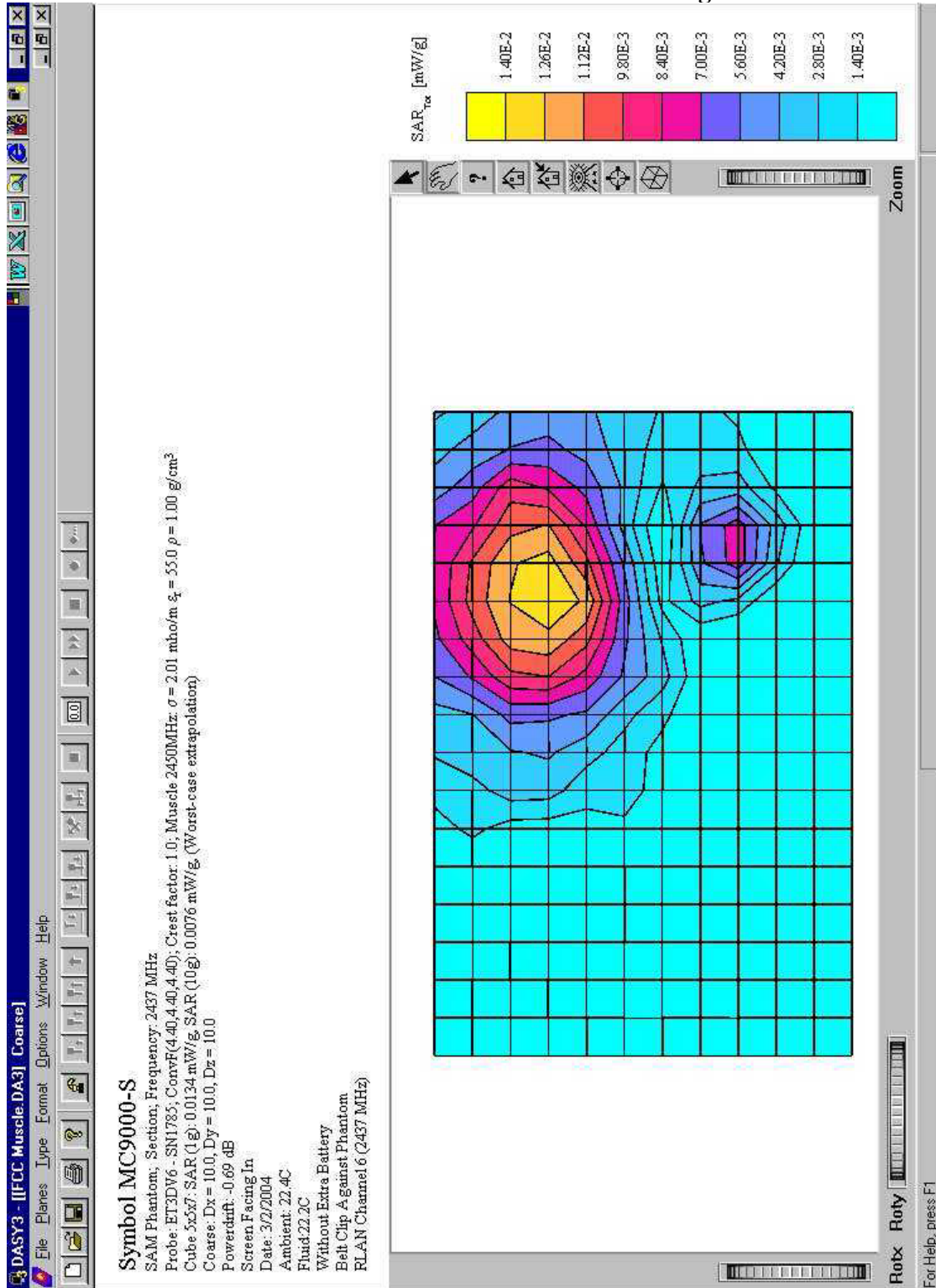
Exhibit 14: CDMA Cell Channel 600 Screen Facing Out With Extra Battery



Symbol Technologies, Model No: MC9063

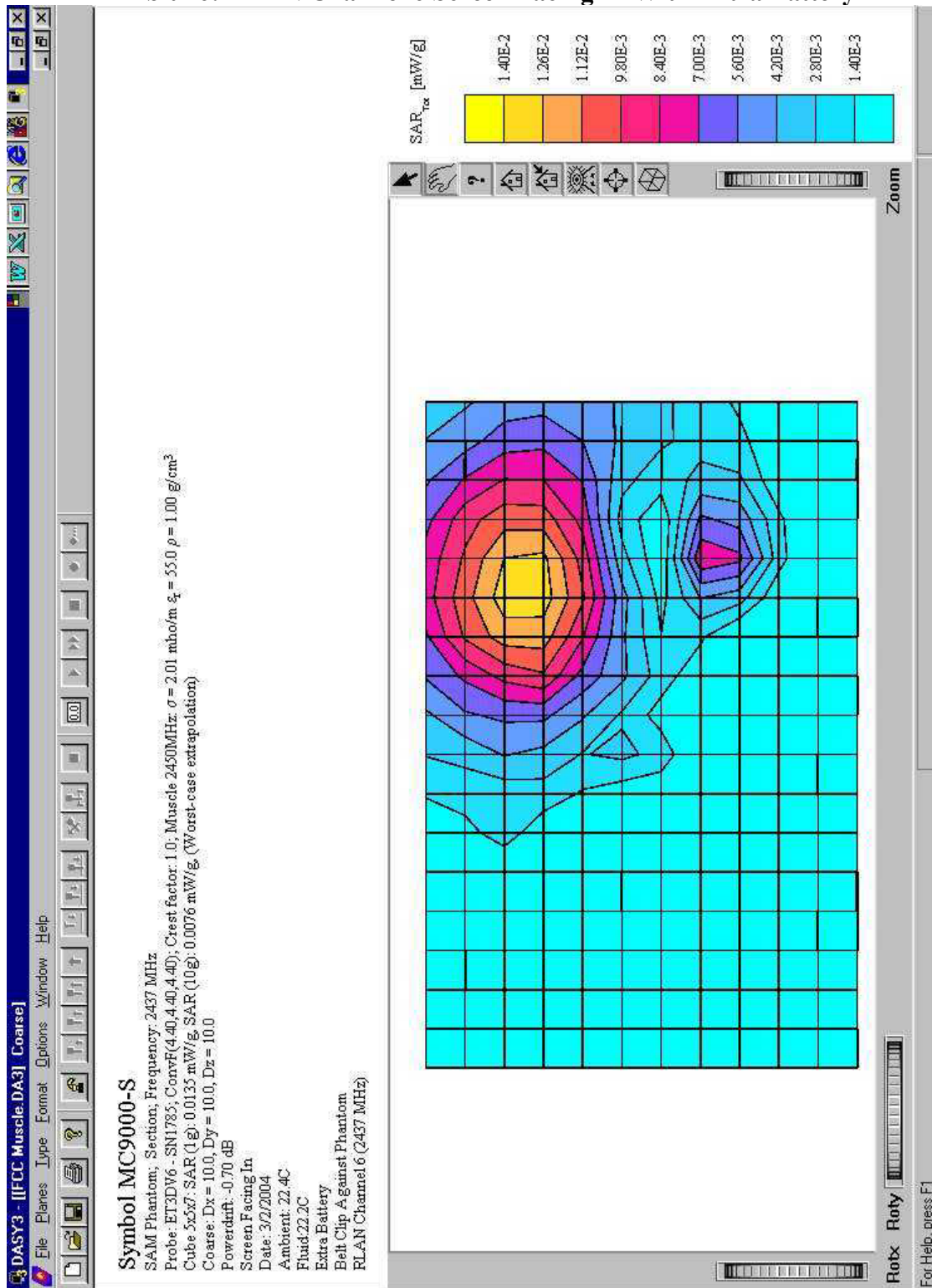
SAR PLOTS FOR RLAN BANDS

Exhibit 15: RLAN Channel 6 Screen Facing In



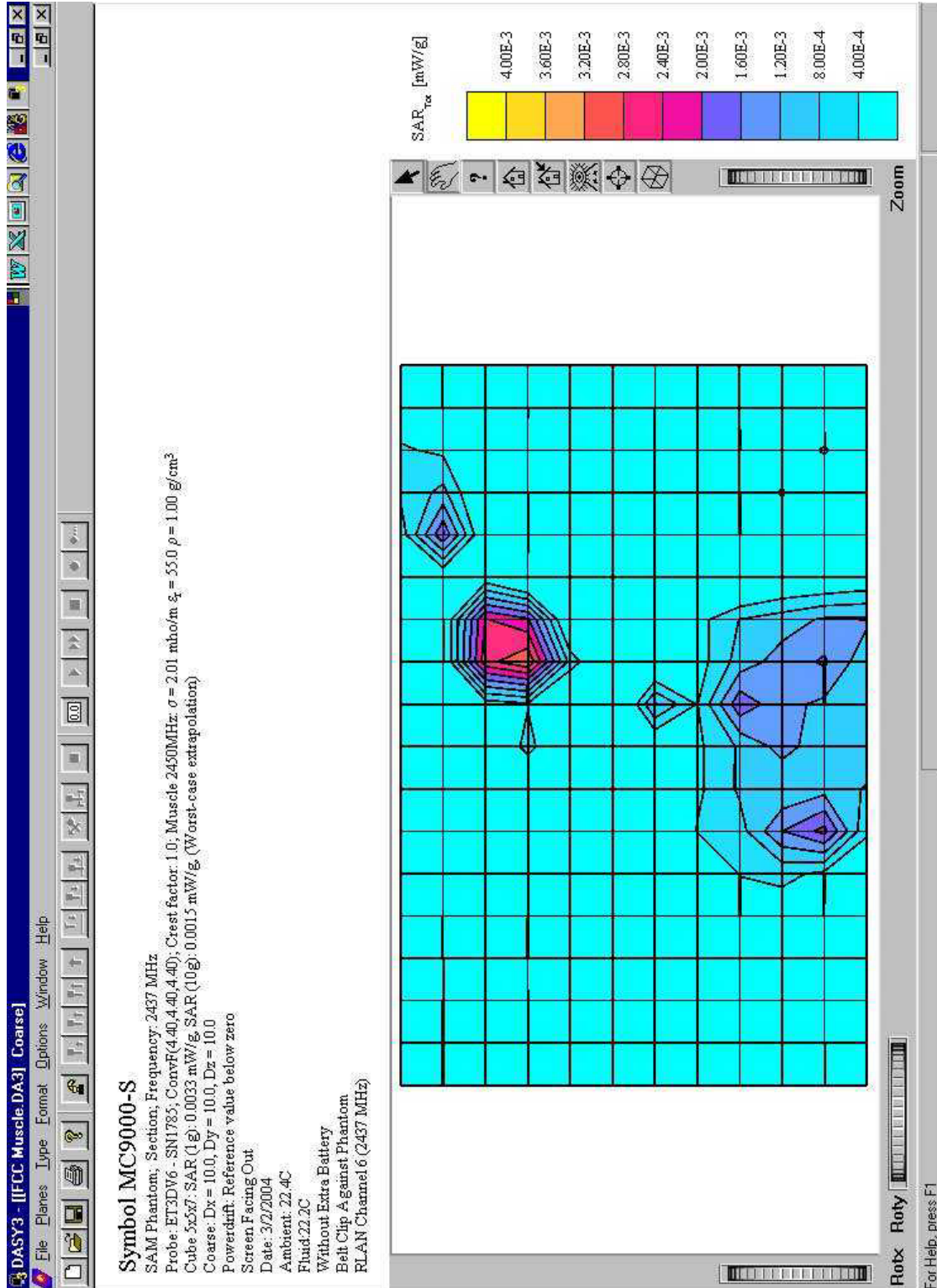
Symbol Technologies, Model No: MC9063

Exhibit 16: RLAN Channel 6 Screen Facing In With Extra Battery



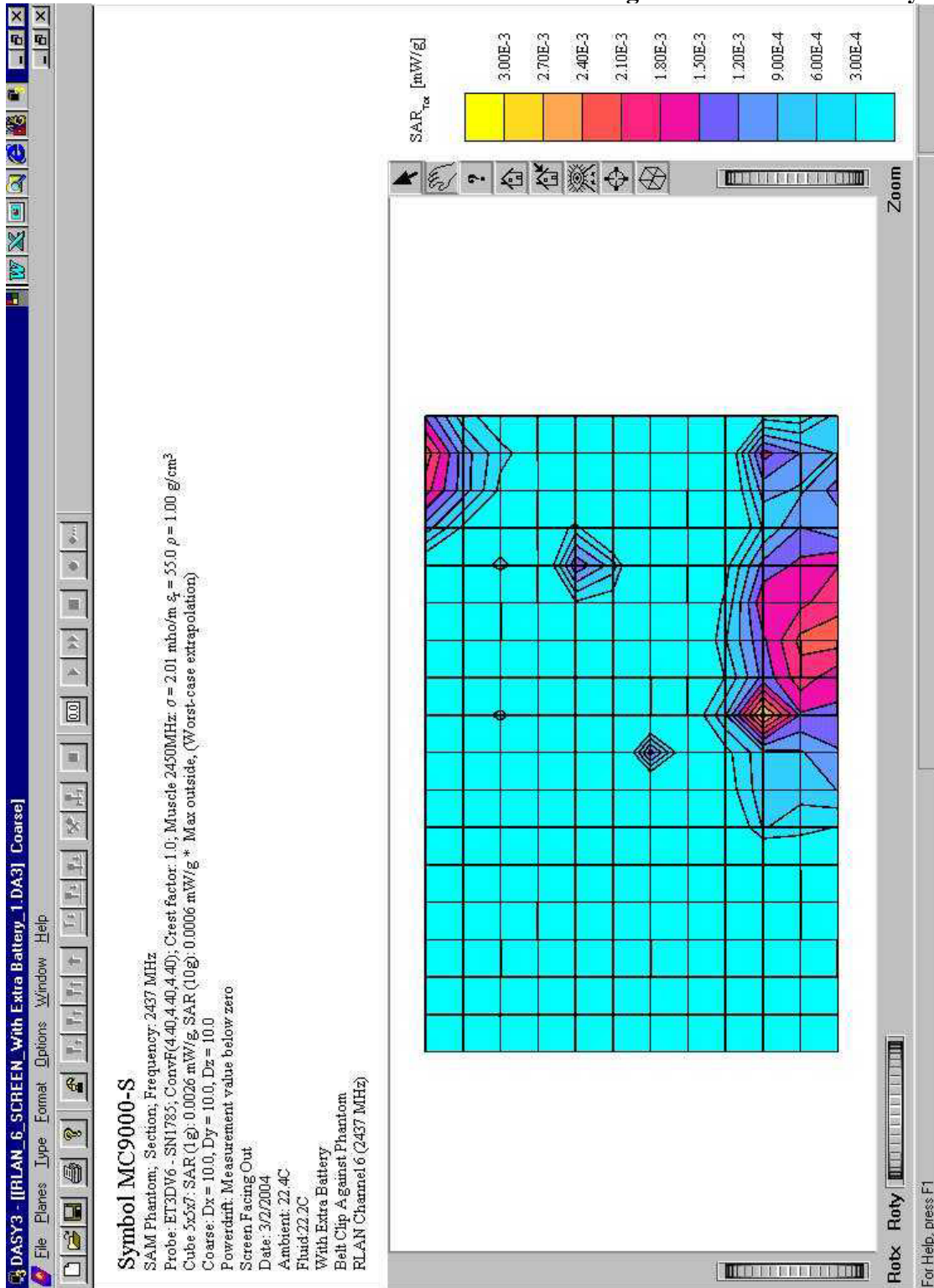
Symbol Technologies, Model No: MC9063

Exhibit 17: RLAN Channel 6 Screen Facing Out



Symbol Technologies, Model No: MC9063

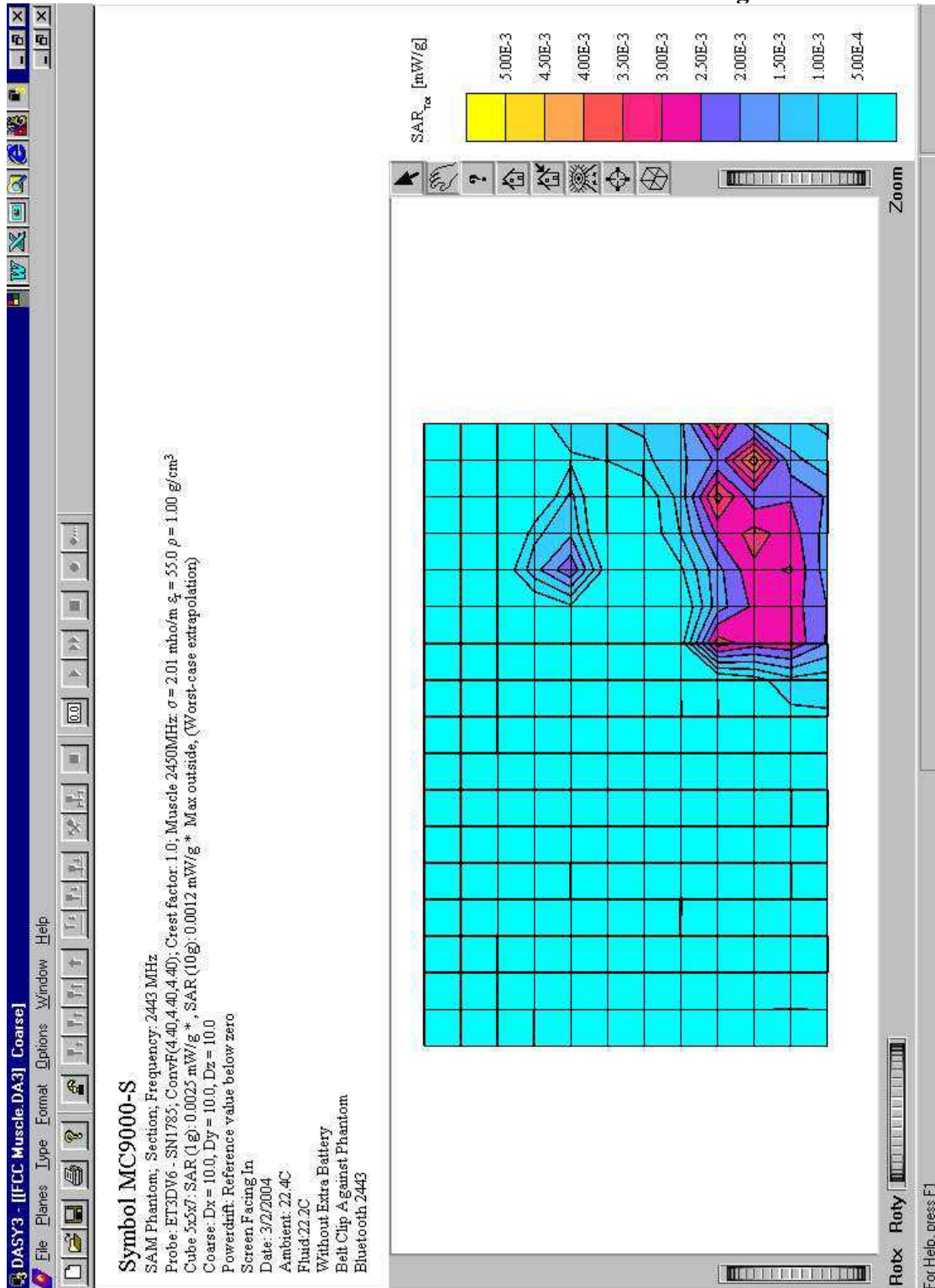
Exhibit 18: RLAN Channel 6 Screen Facing Out With Extra Battery



Symbol Technologies, Model No: MC9063

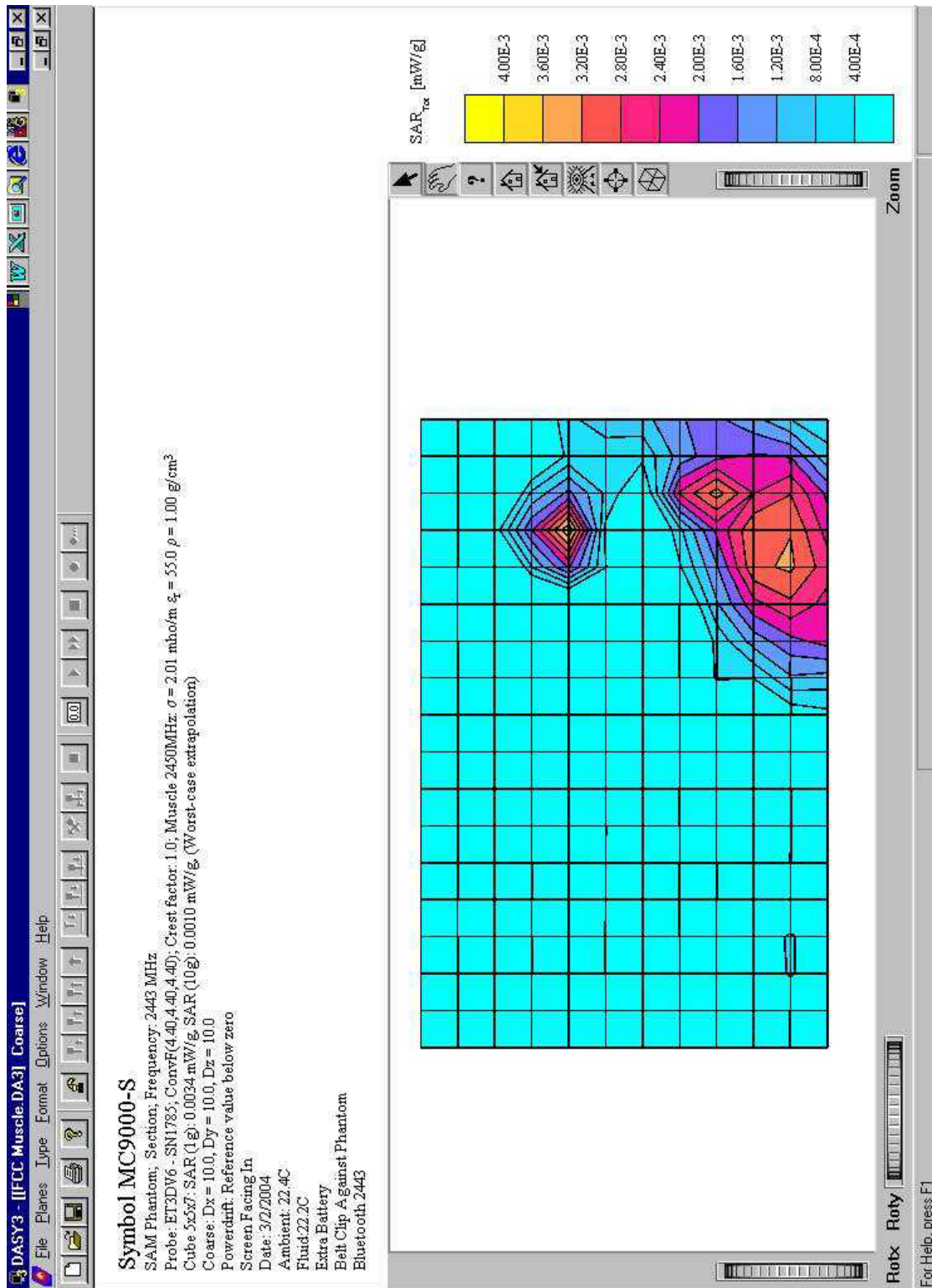
SAR PLOTS FOR BLUETOOTH BANDS

Exhibit 19: Bluetooth Channel 2443 Screen Facing In



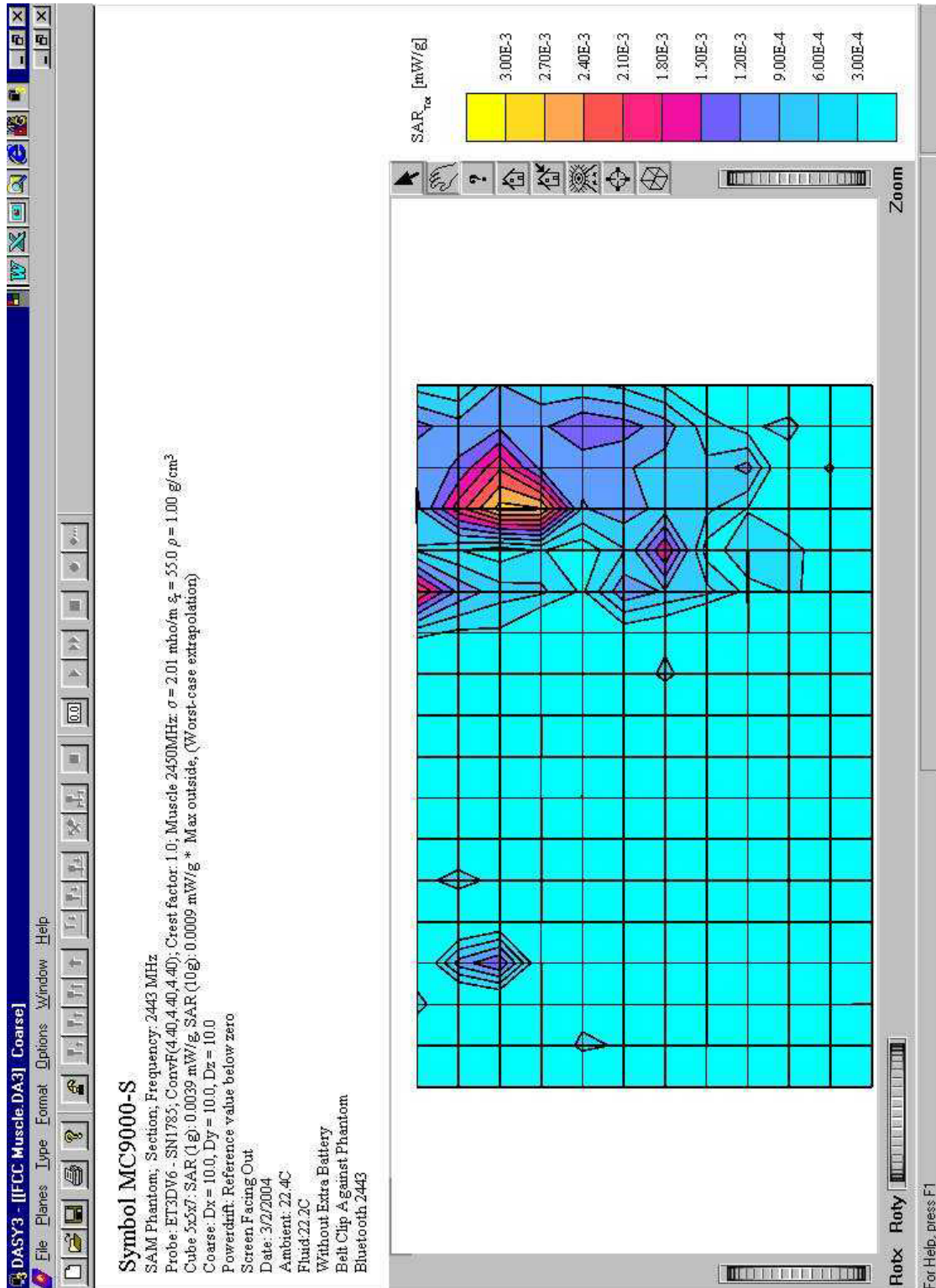
Symbol Technologies, Model No: MC9063

Exhibit 20: Bluetooth Channel 2443 Screen Facing In With Extra Battery



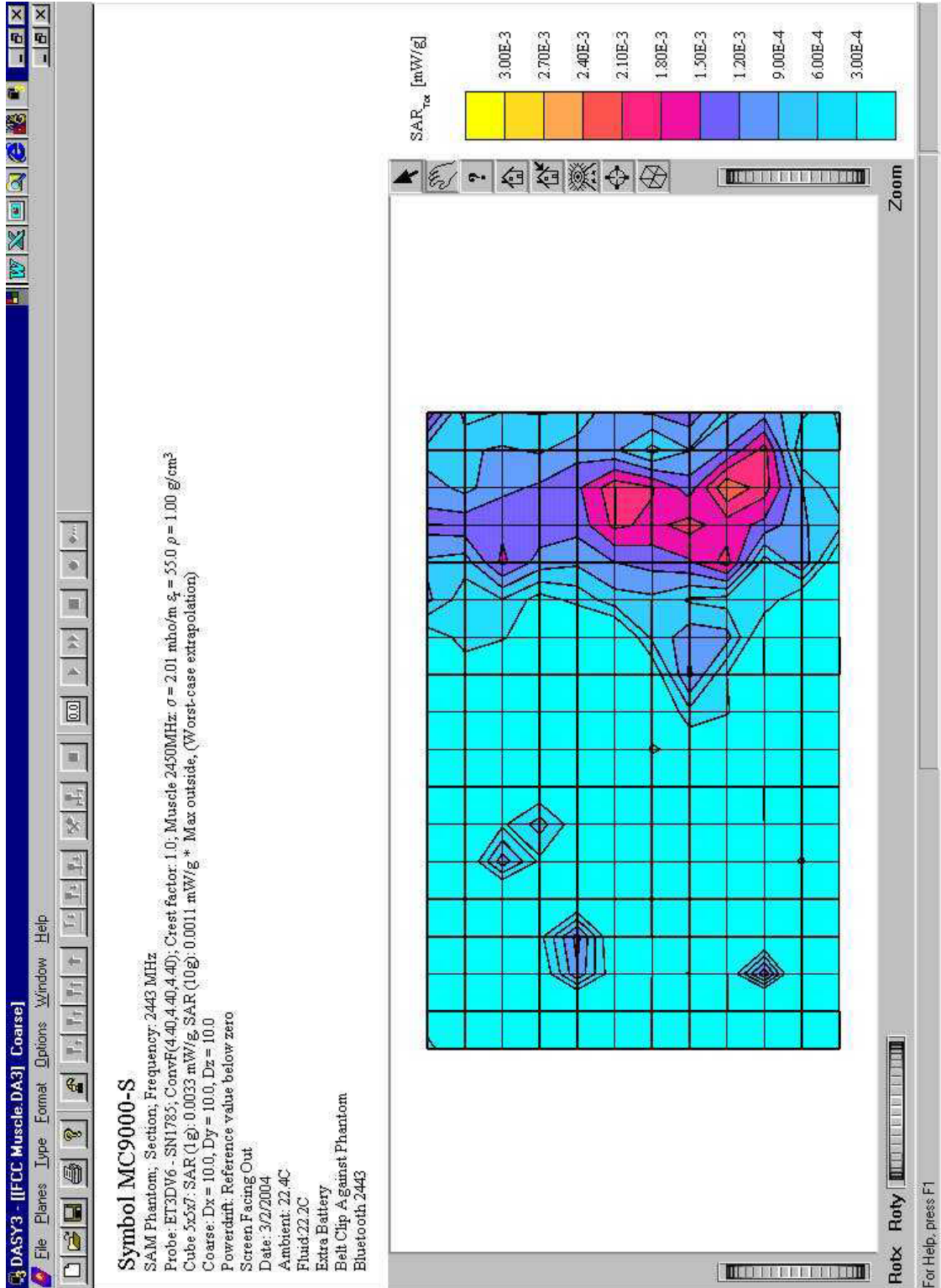
Symbol Technologies, Model No: MC9063

Exhibit 21: Bluetooth Channel 2443 Screen Facing Out



Symbol Technologies, Model No: MC9063

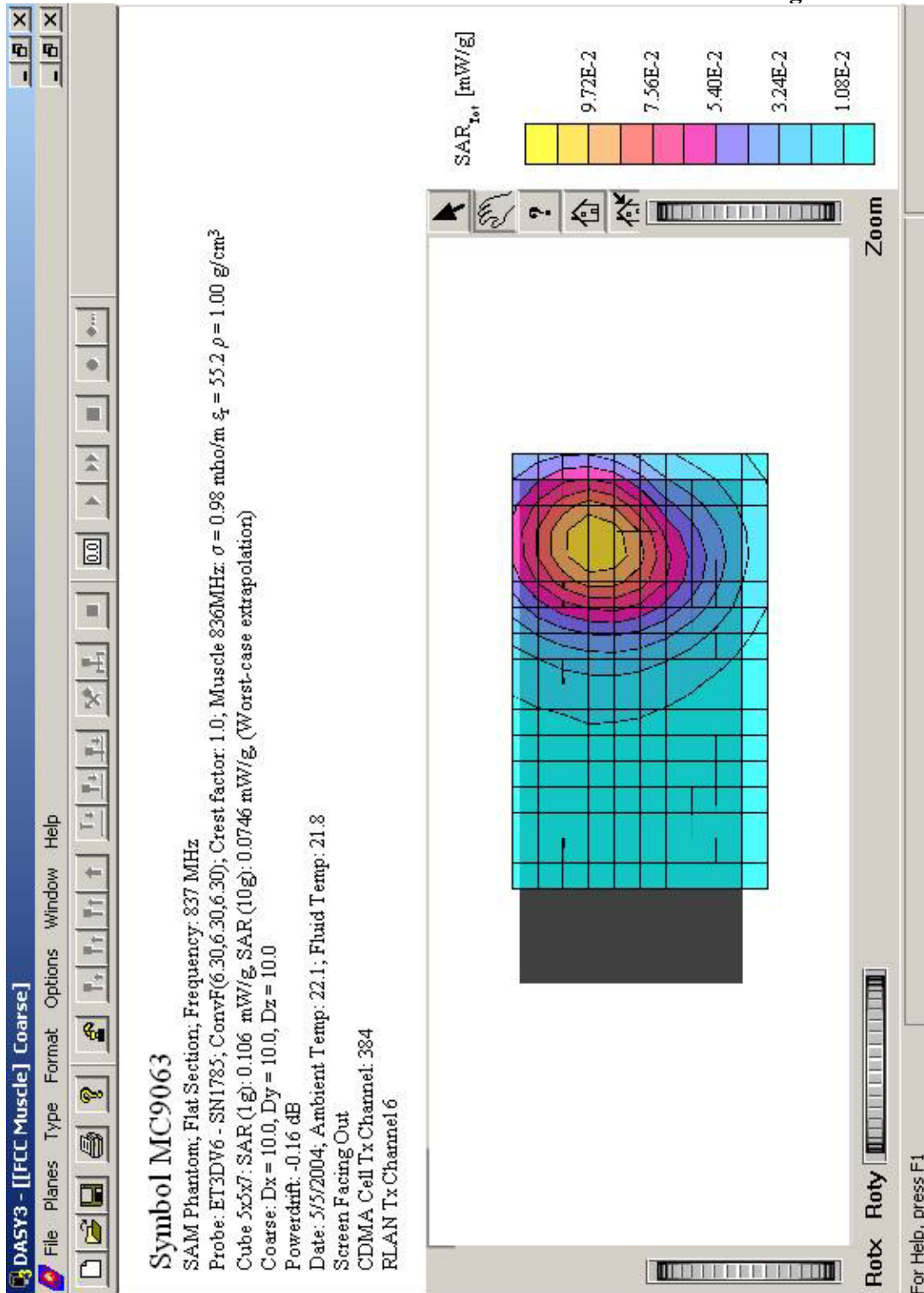
Exhibit 22: Bluetooth Channel 2443 Screen Facing Out With Extra Battery



Symbol Technologies, Model No: MC9063

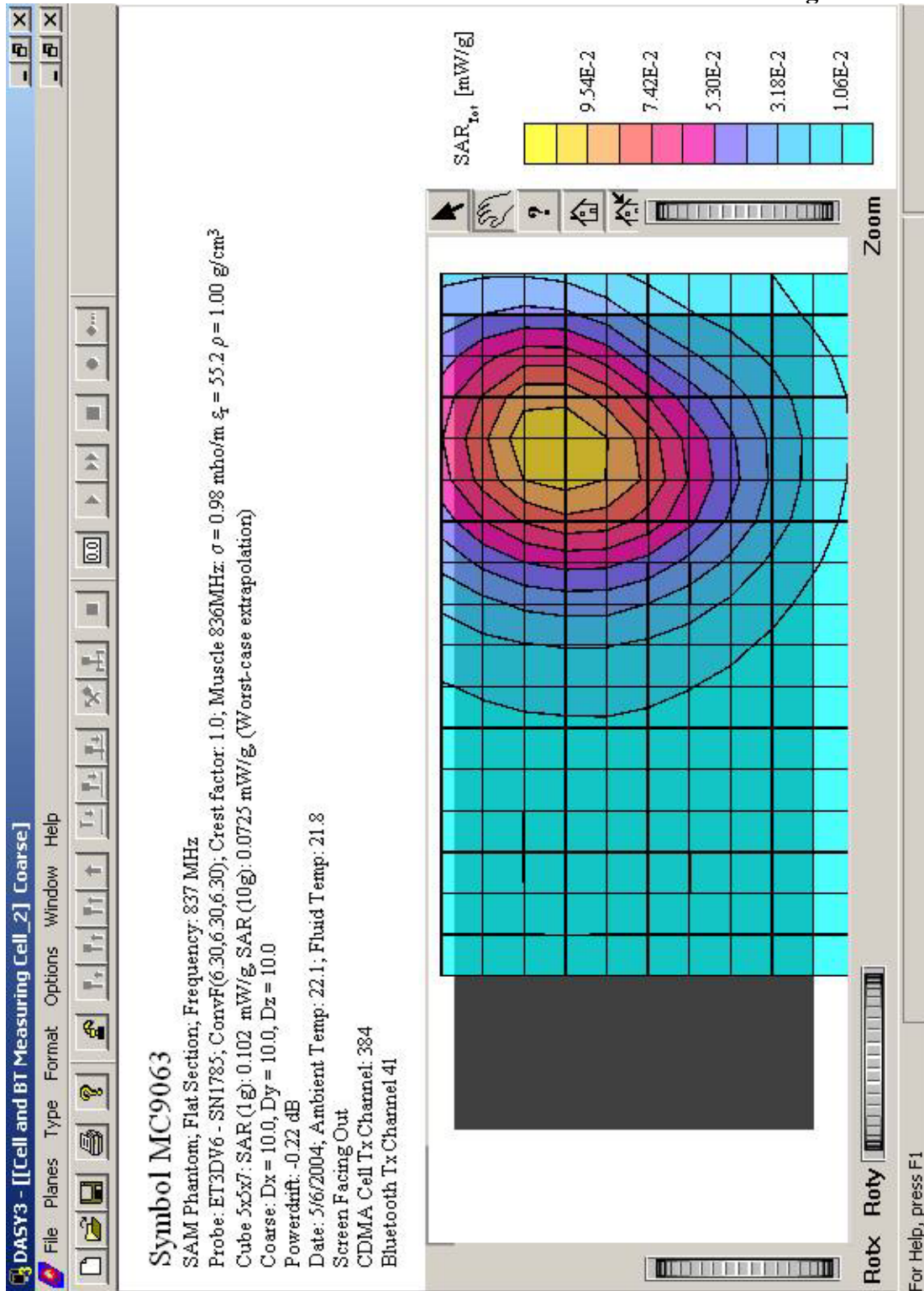
SAR PLOTS FOR SIMULTANEOUS TRANSMITTER OPERATION

Exhibit 23: Cell Channel 384 and RLAN Measuring Cell



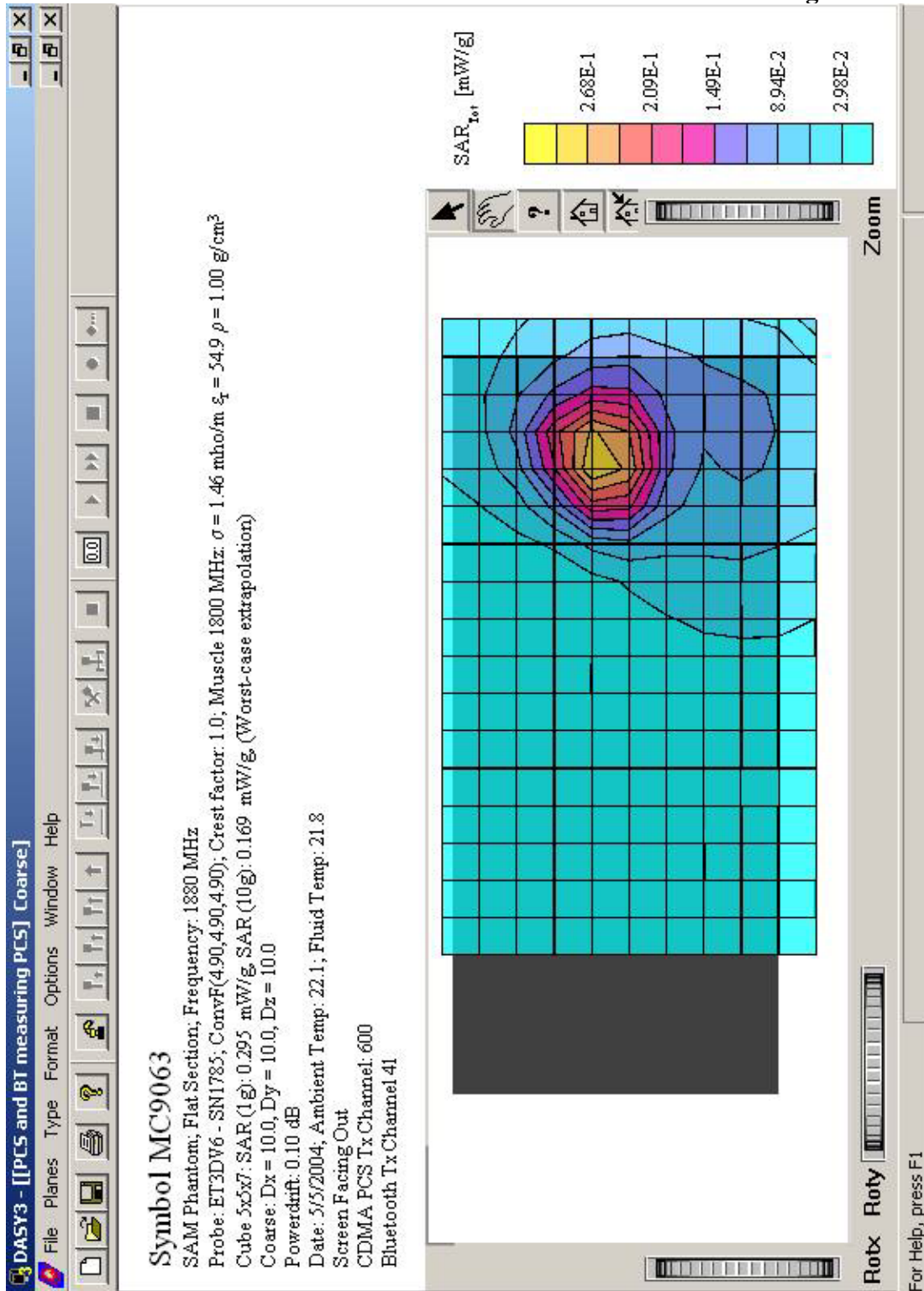
Symbol Technologies, Model No: MC9063

Exhibit 24: Cell Channel 384 and Bluetooth Measuring Cell



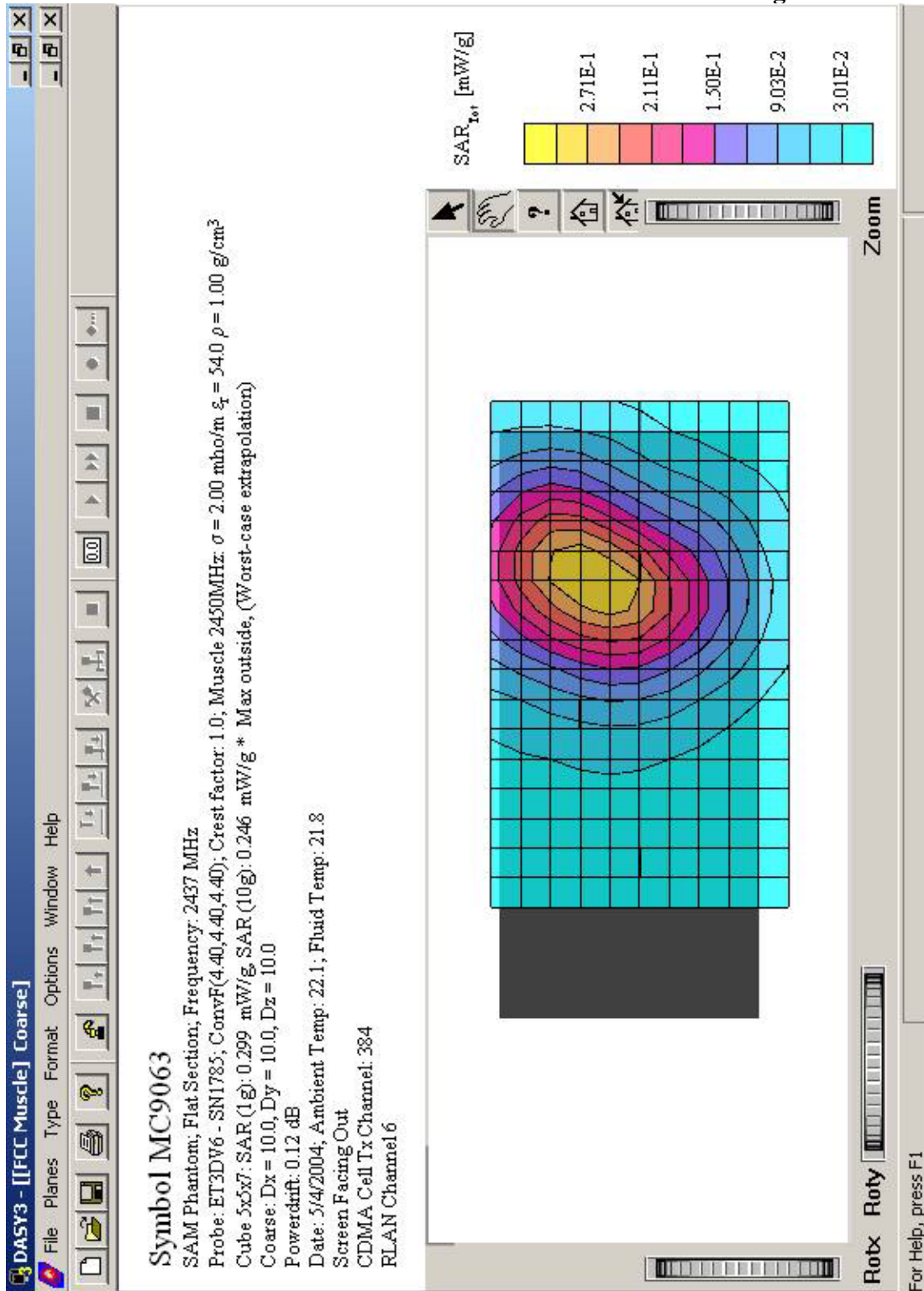
Symbol Technologies, Model No: MC9063

Exhibit 26: PCS Channel 600 and Bluetooth Measuring PCS



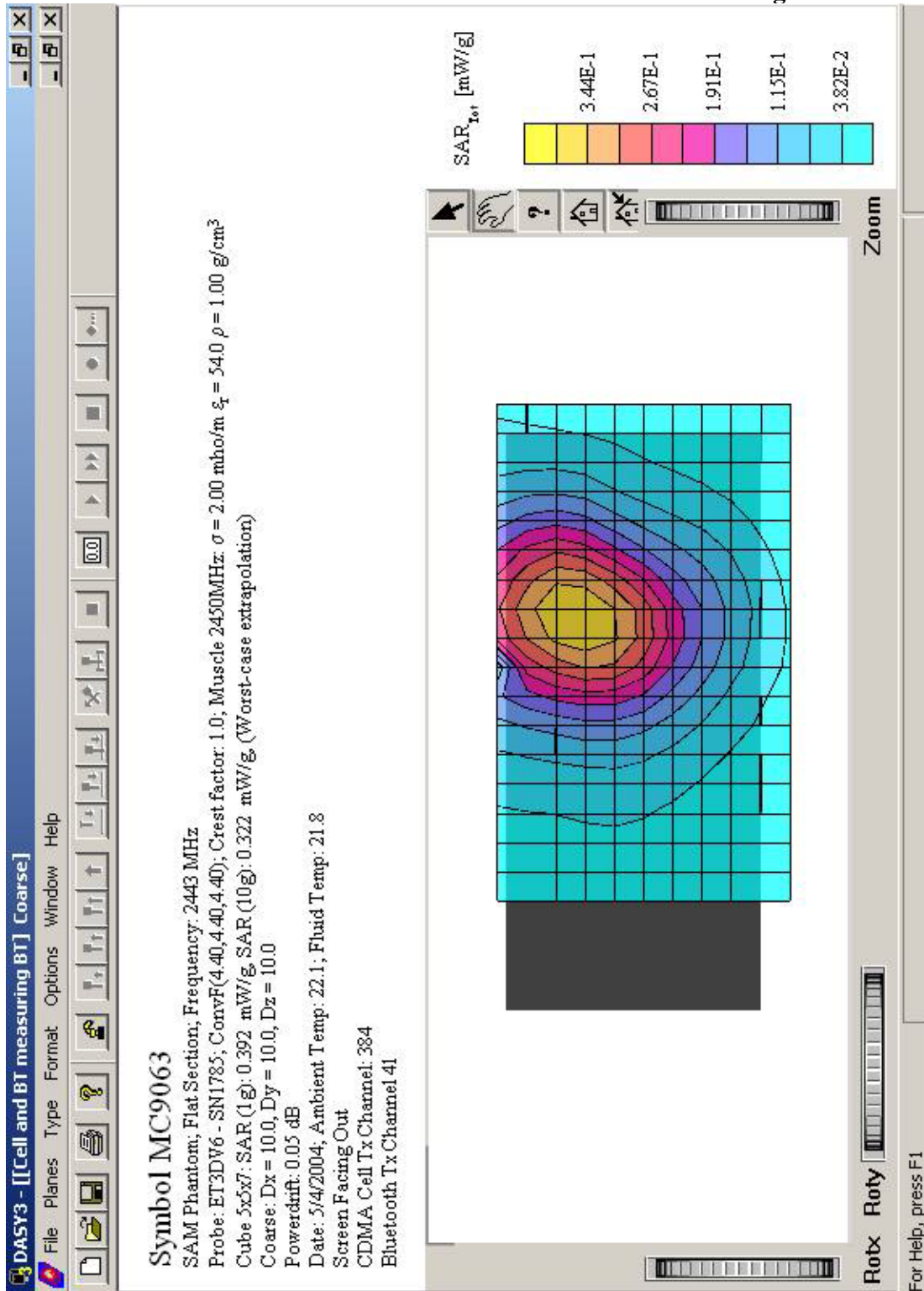
Symbol Technologies, Model No: MC9063

Exhibit 27: Cell Channel 384 and RLAN Measuring RLAN



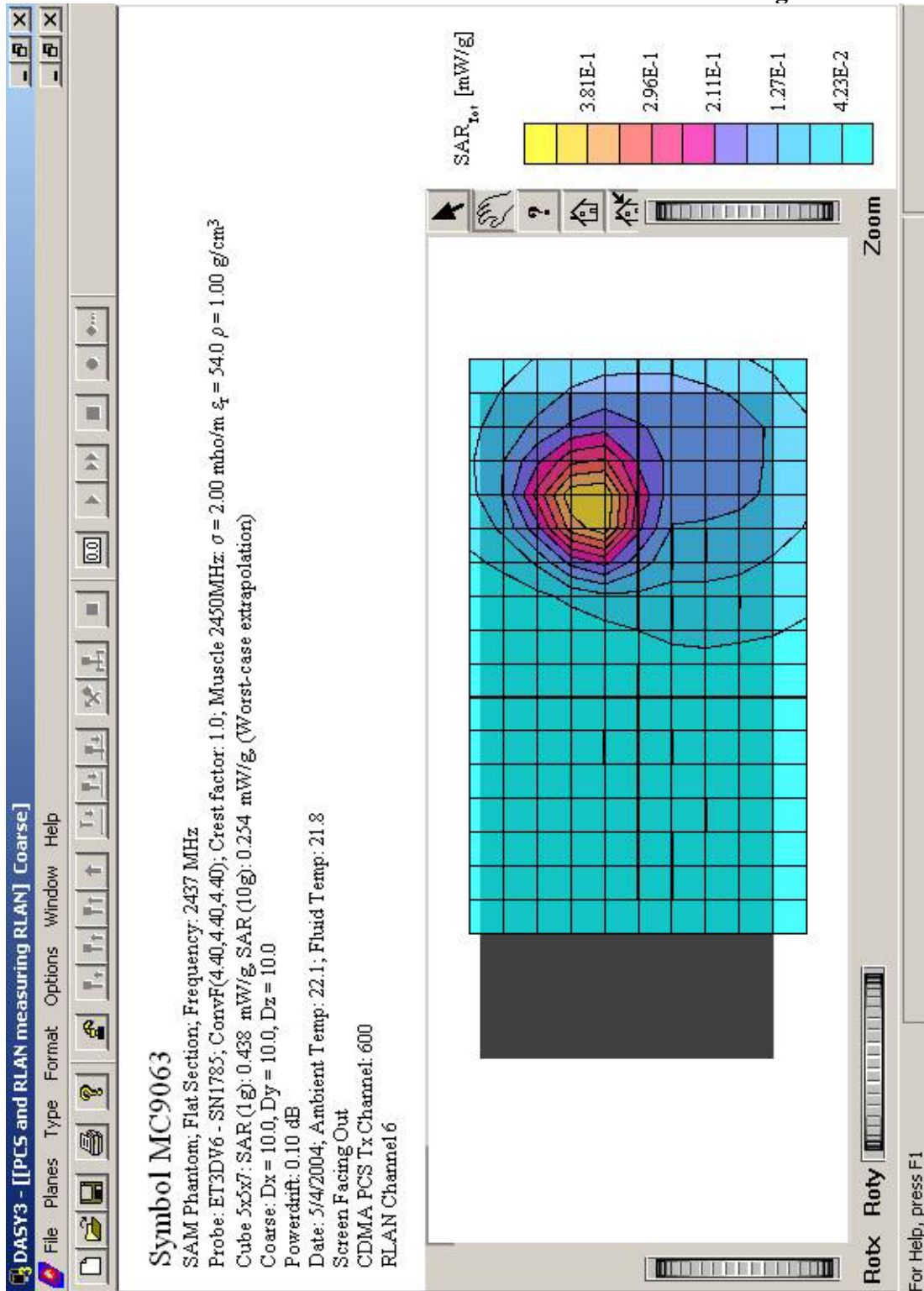
Symbol Technologies, Model No: MC9063

Exhibit 28: Cell Channel 384 and Bluetooth Measuring Bluetooth



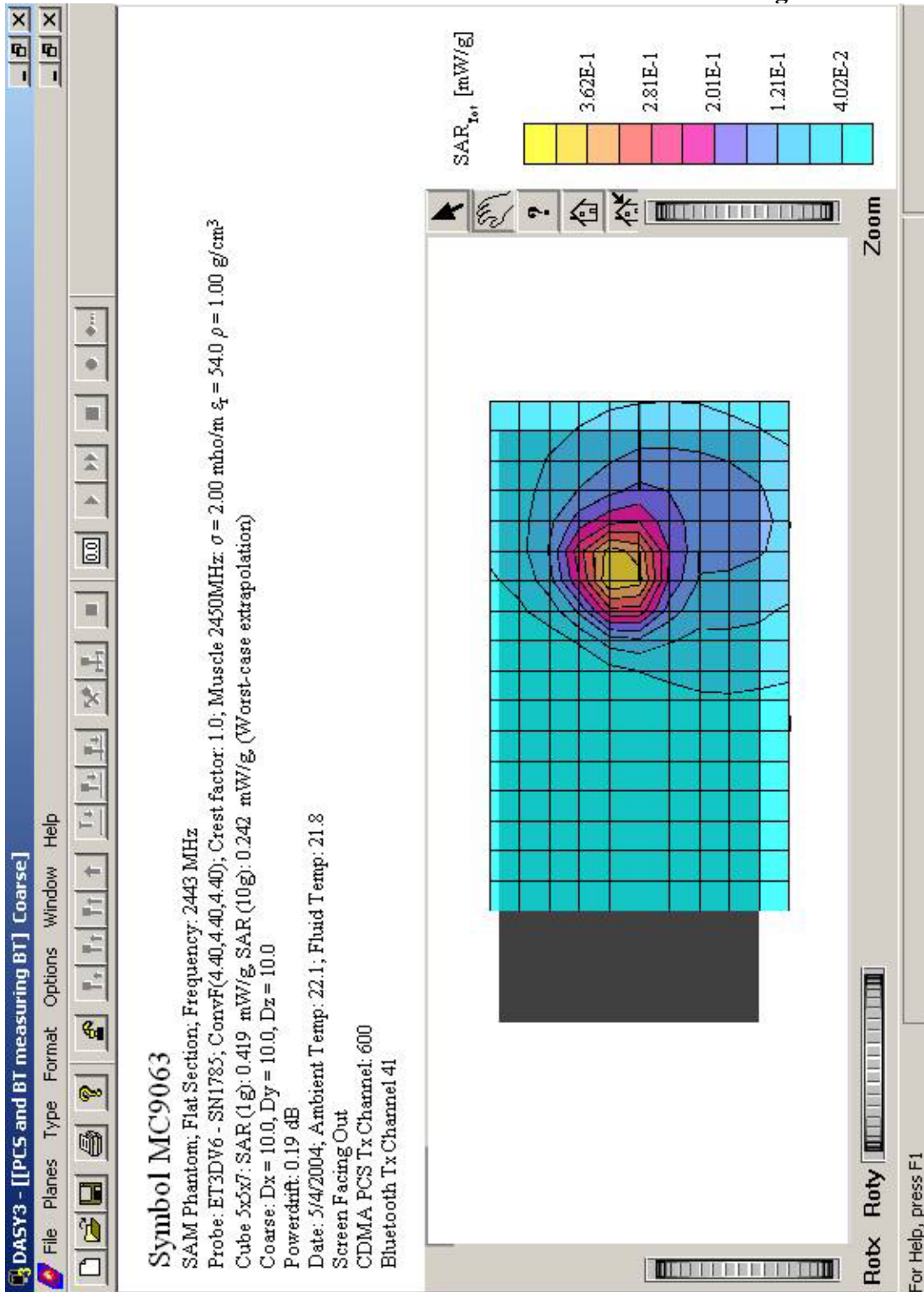
Symbol Technologies, Model No: MC9063

Exhibit 29: PCS Channel 600 and RLAN Measuring RLAN



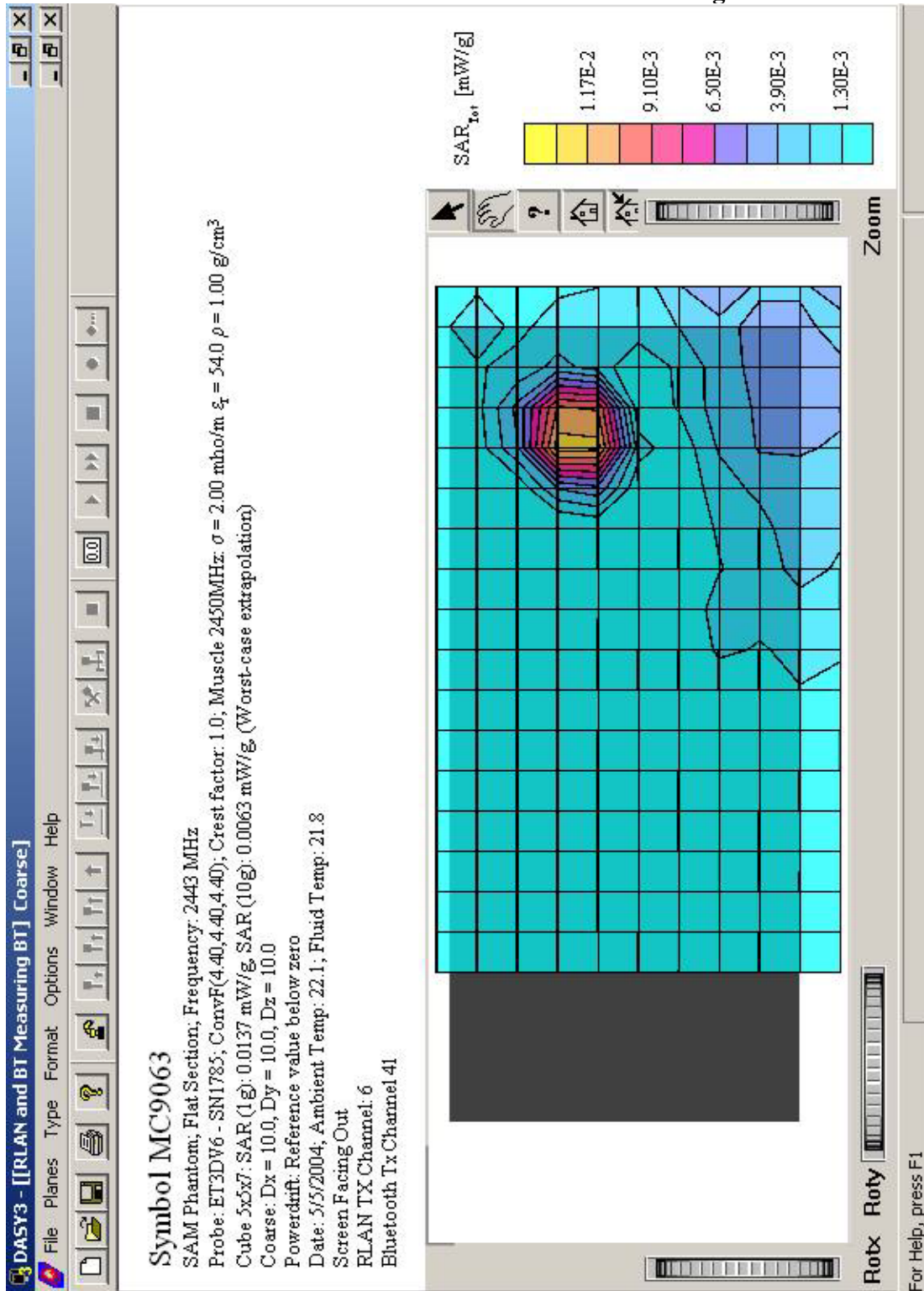
Symbol Technologies, Model No: MC9063

Exhibit 30: PCS Channel 600 and Bluetooth Measuring Bluetooth



Symbol Technologies, Model No: MC9063

Exhibit 31: Bluetooth and RLAN Measuring Bluetooth



Symbol Technologies, Model No: MC9063

Exhibit 32: Bluetooth and RLAN Measuring RLAN

