

Symbol Technologies, Model No: MC9063
FCC ID: H9PMC9063B

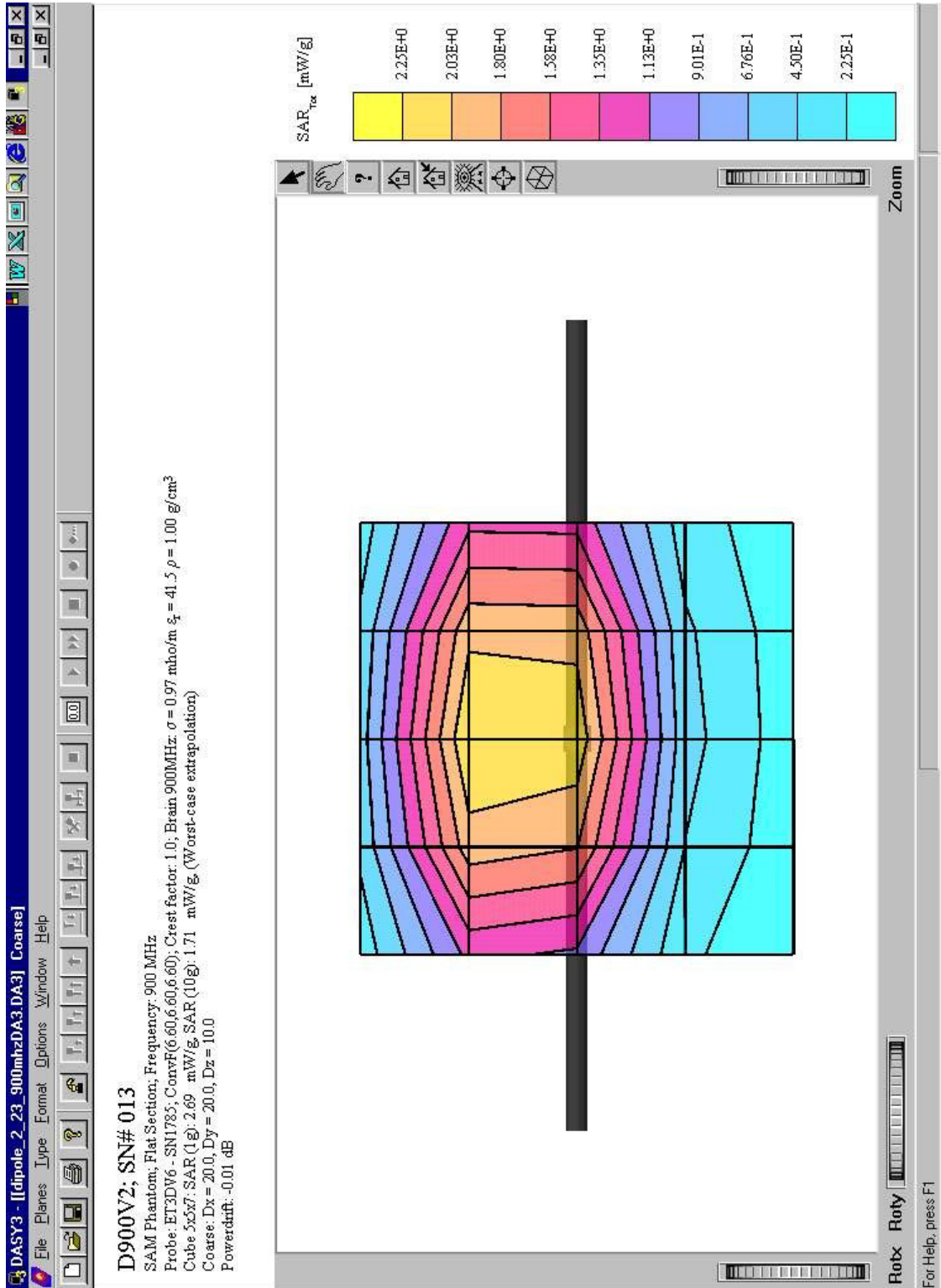
1.0 GRAPHICAL TEST RESULTS

Please note that the graphical visualization of the phone position onto the SAR distribution gives only limited information on the current distribution of the device, since the curvature of the head results in graphical distortion. Full information can only be obtained either by H-field scans in free space or SAR evaluation with a flat phantom.

Symbol Technologies, Model No: MC9063
 FCC ID: H9PMC9063B

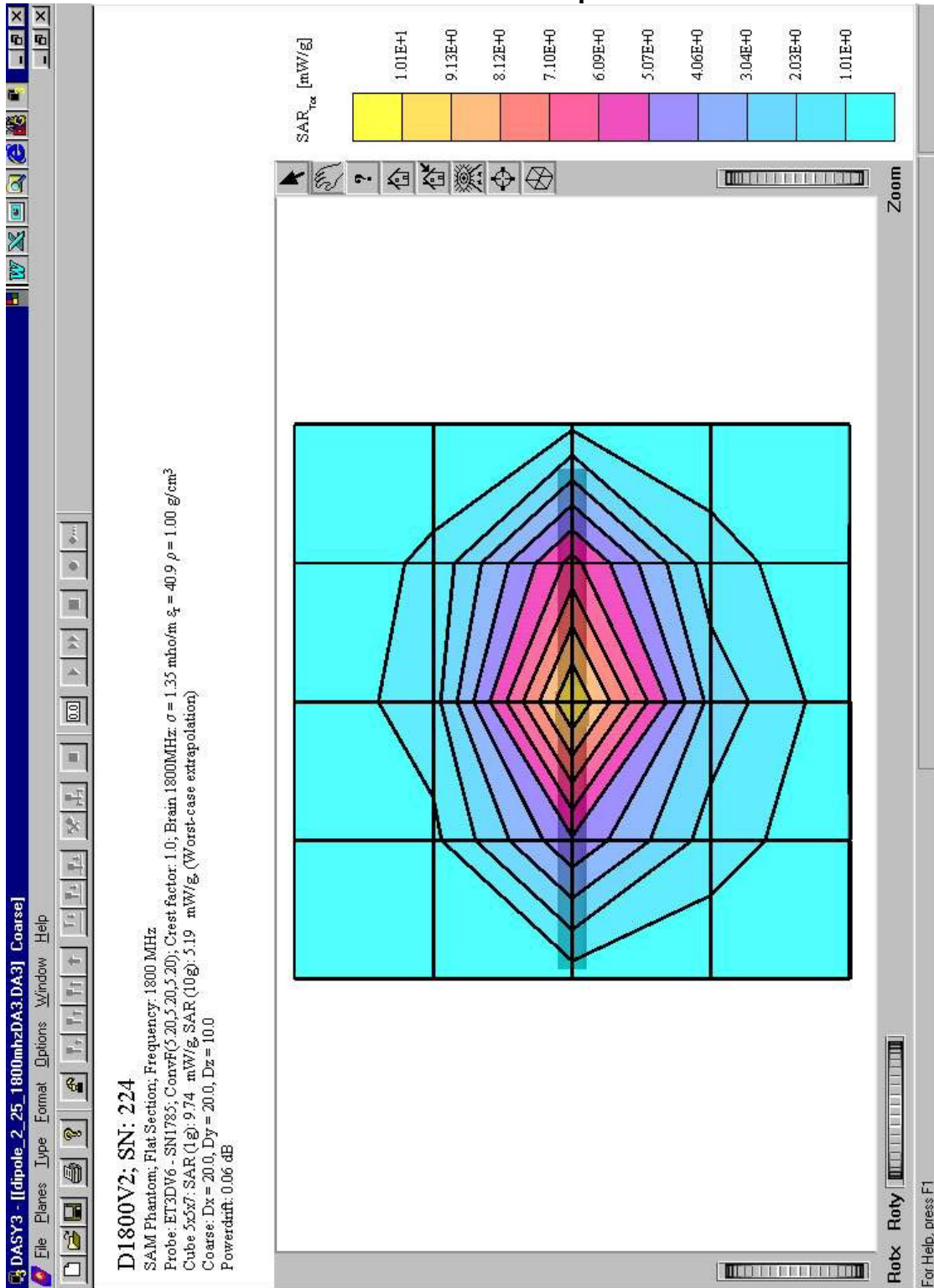
SAR PLOTS FOR SYSTEM VERIFICATION

Exhibit 1: 900 MHz Dipole Validation



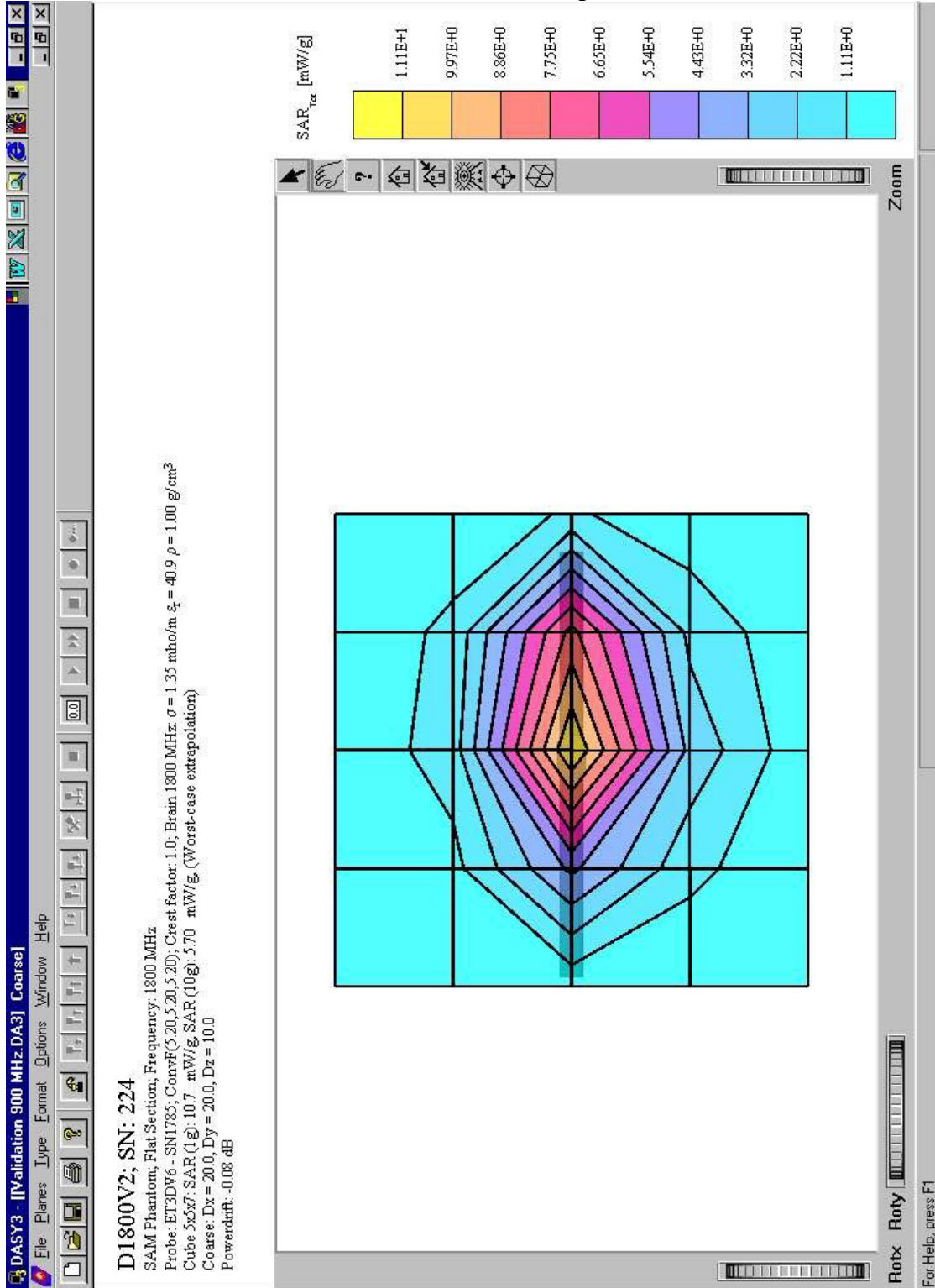
Symbol Technologies, Model No: MC9063
 FCC ID: H9PMC9063B

Exhibit 2: 1800 MHz Dipole Validation



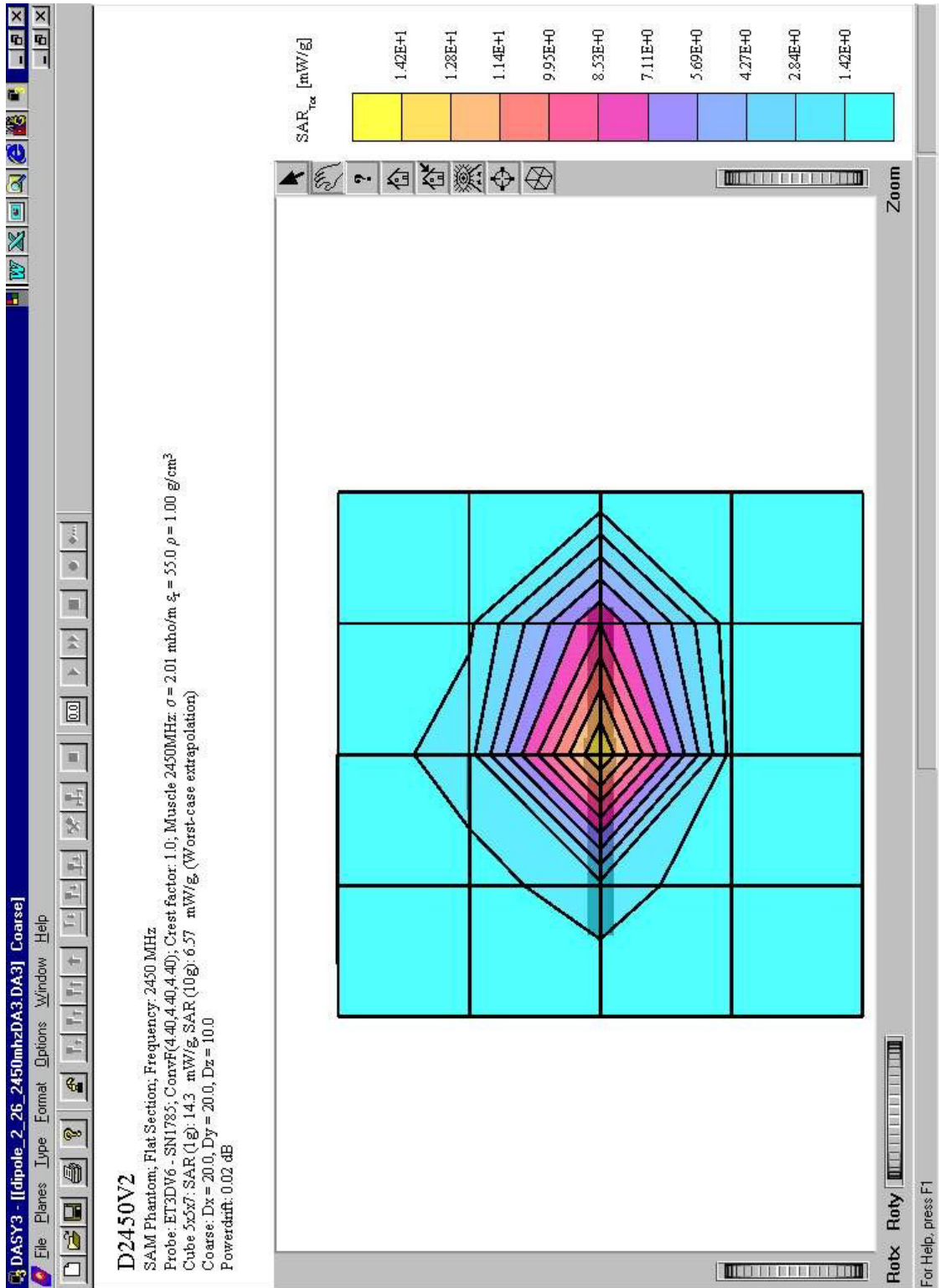
Symbol Technologies, Model No: MC9063
 FCC ID: H9PMC9063B

Exhibit 3: 1800 MHz Dipole Validation



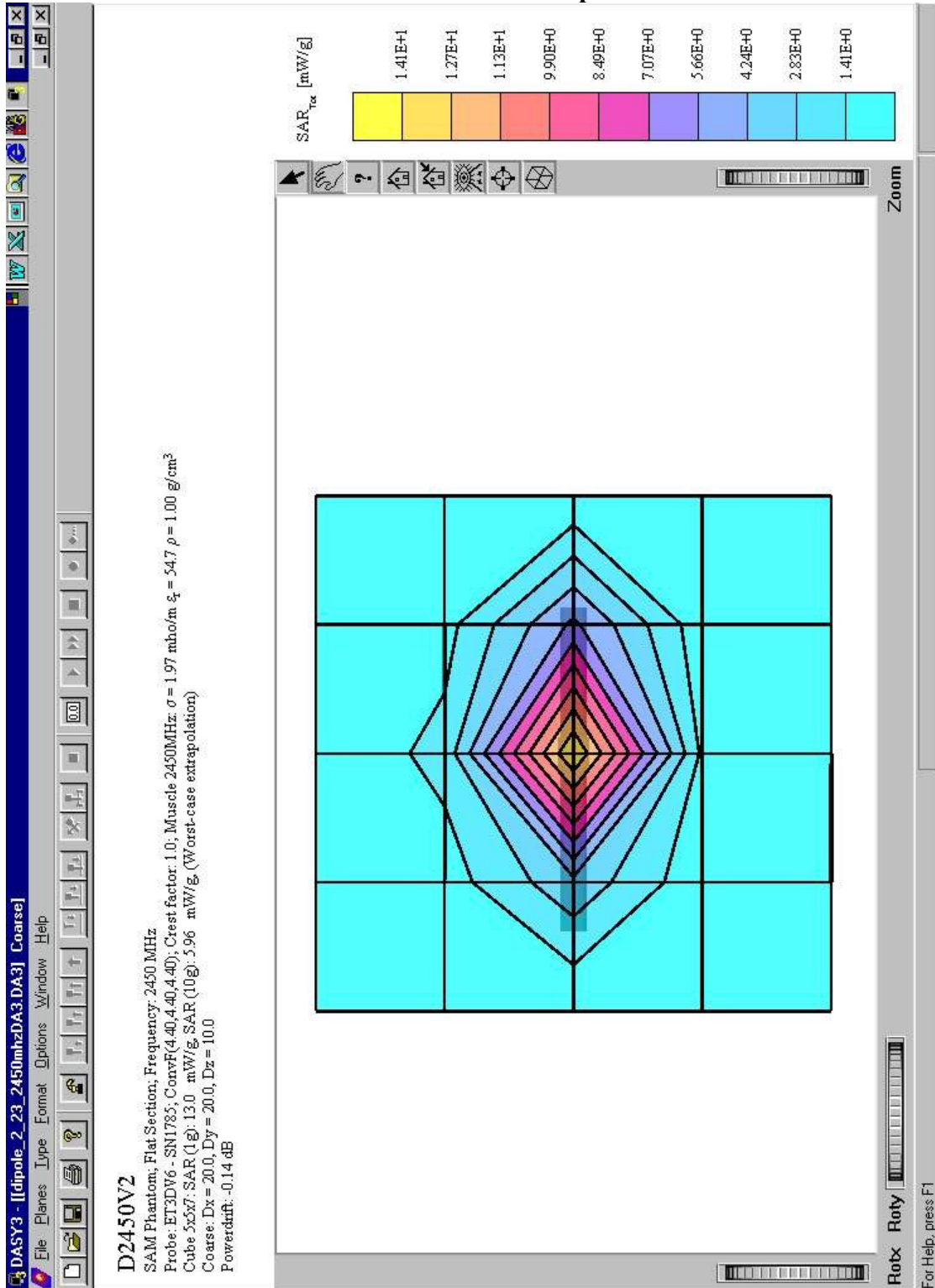
Symbol Technologies, Model No: MC9063
 FCC ID: H9PMC9063B

Exhibit 4: 2450 MHz Dipole Validation



Symbol Technologies, Model No: MC9063
 FCC ID: H9PMC9063B

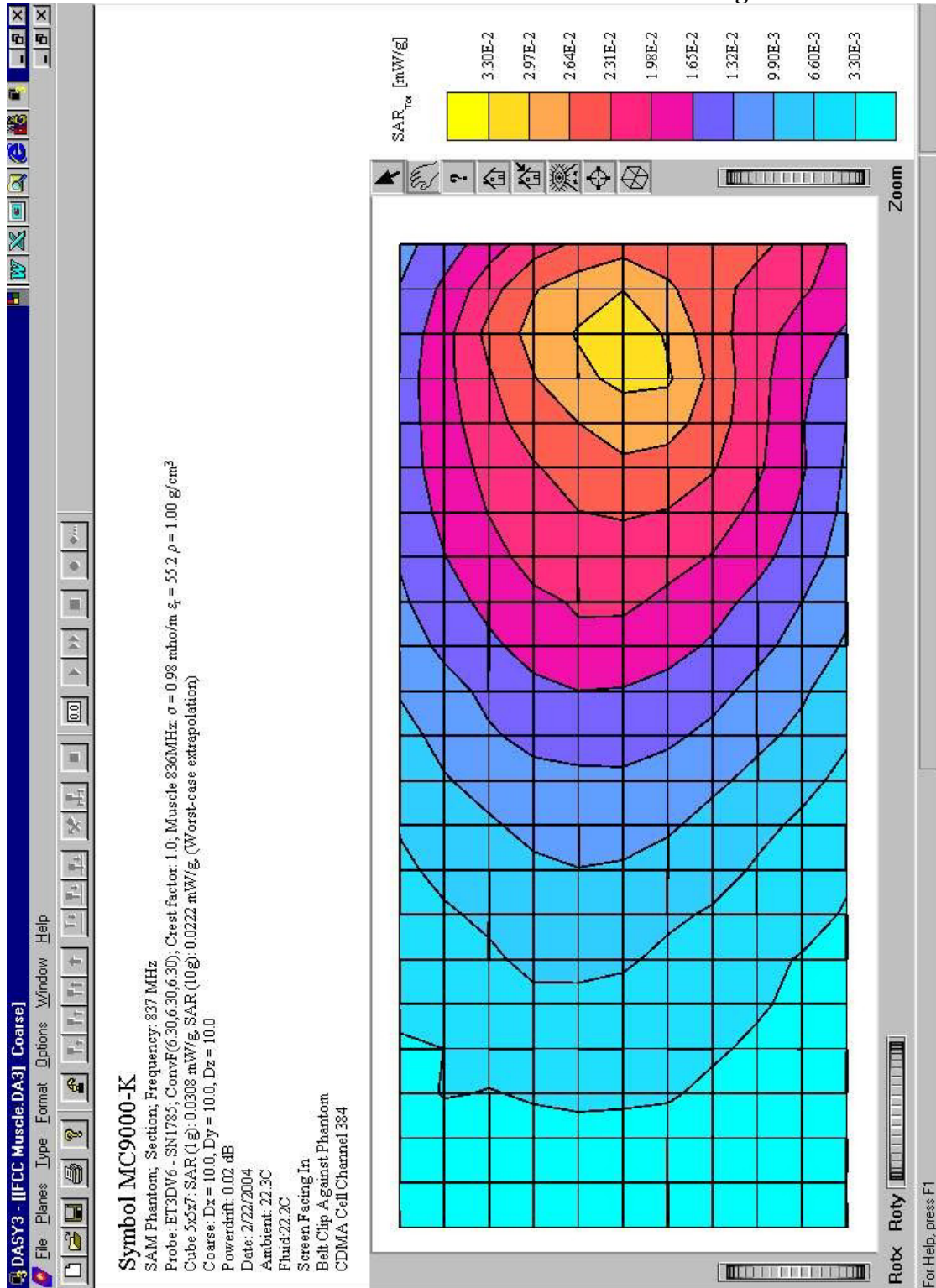
Exhibit 5: 2450 MHz Dipole Validation



Symbol Technologies, Model No: MC9063
 FCC ID: H9PMC9063B

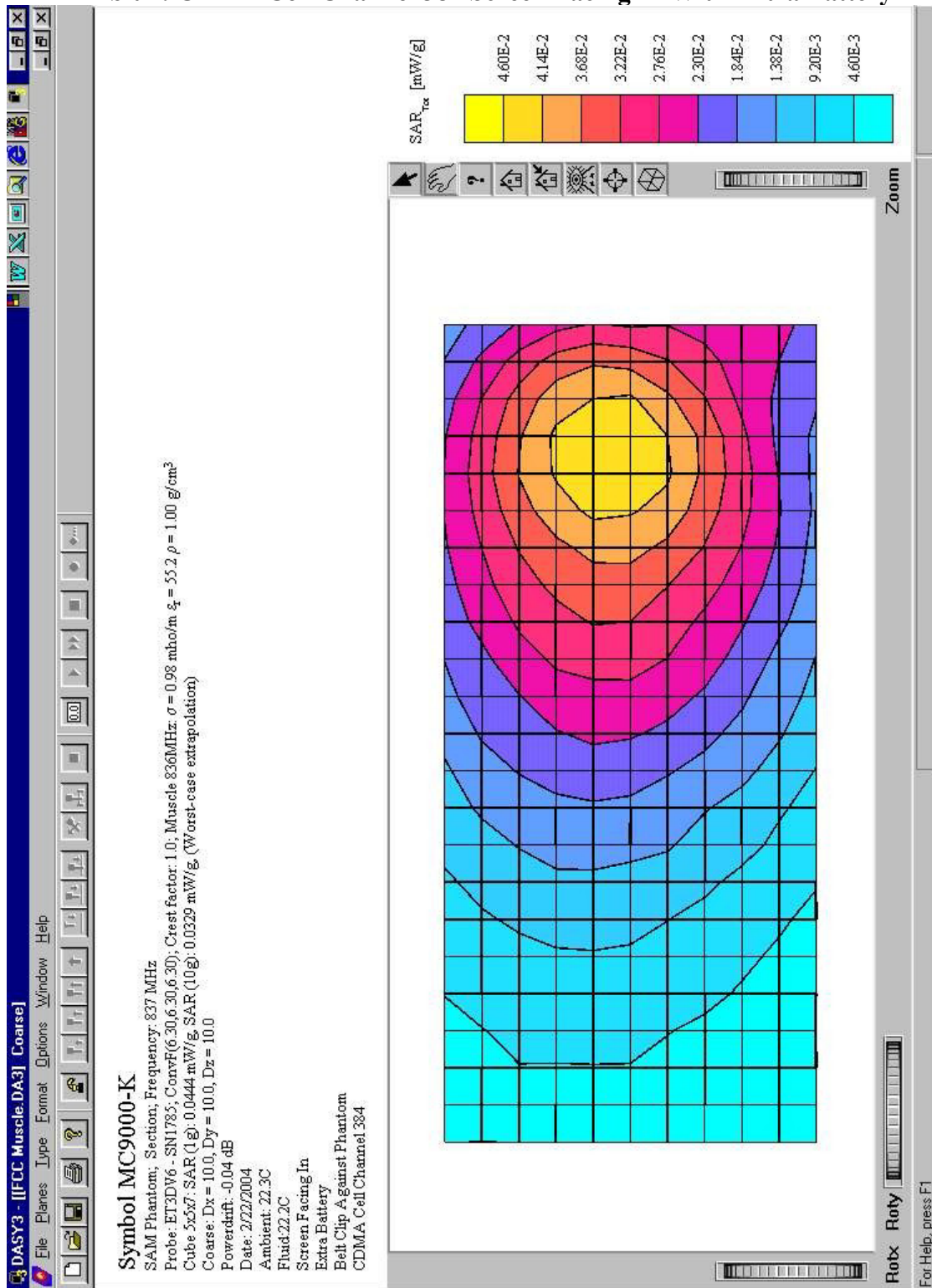
SAR PLOTS FOR CDMA CELL AND PCS BANDS

Exhibit 6: CDMA Cell Channel 384 Screen Facing In



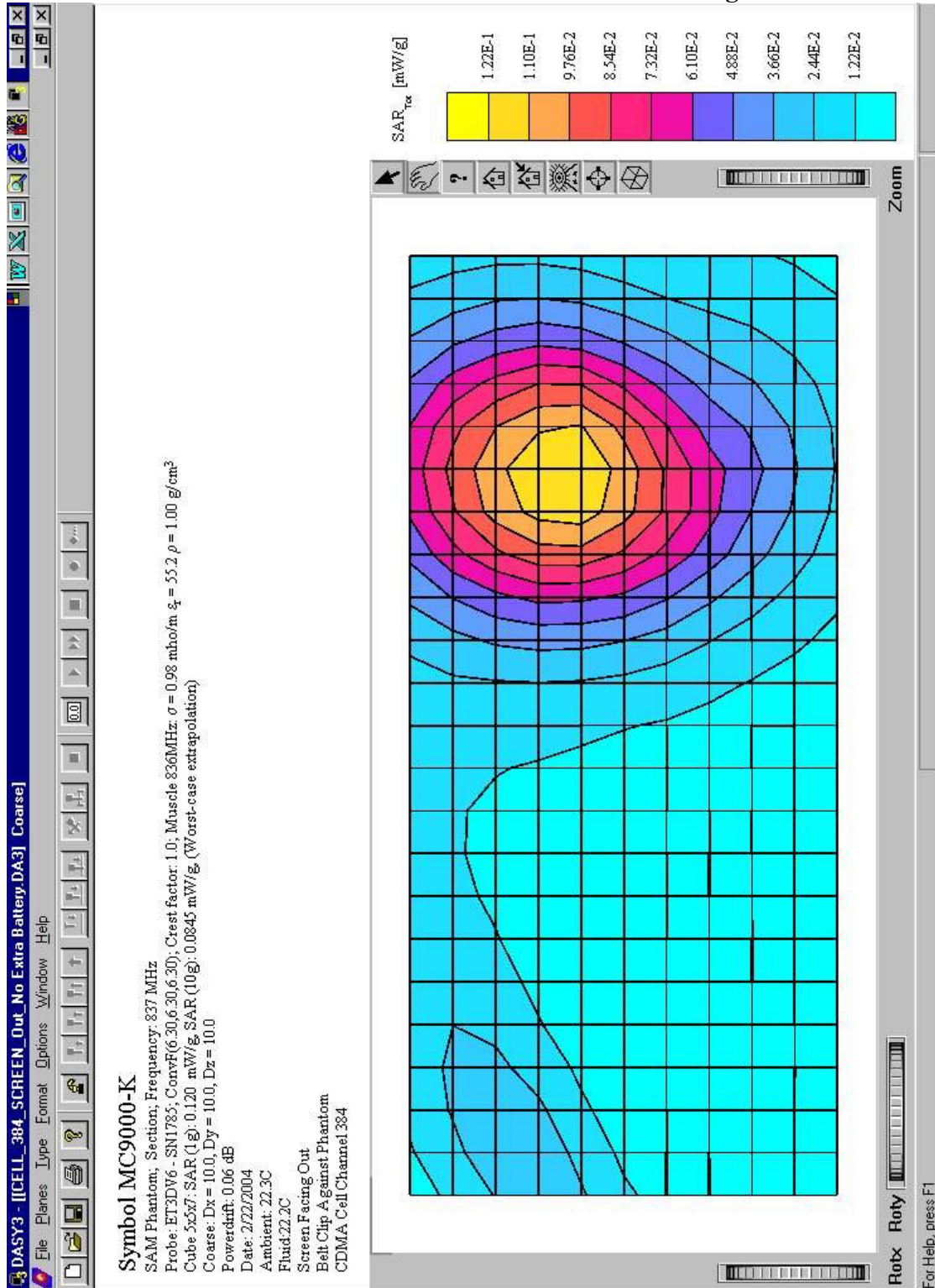
Symbol Technologies, Model No: MC9063
 FCC ID: H9PMC9063B

Exhibit 7: CDMA Cell Channel 384 Screen Facing In With Extra Battery



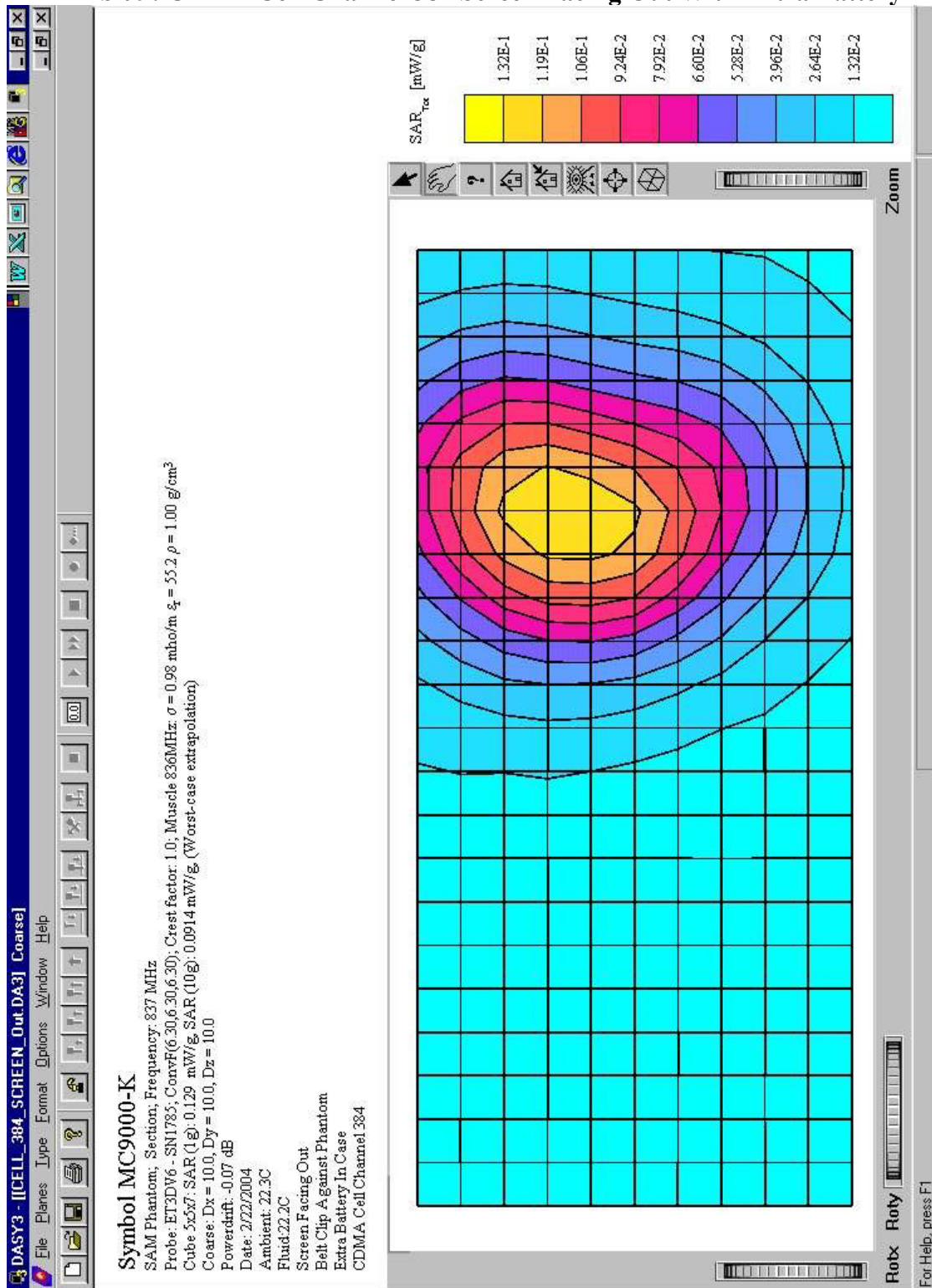
Symbol Technologies, Model No: MC9063
 FCC ID: H9PMC9063B

Exhibit 8: CDMA Cell Channel 384 Screen Facing Out



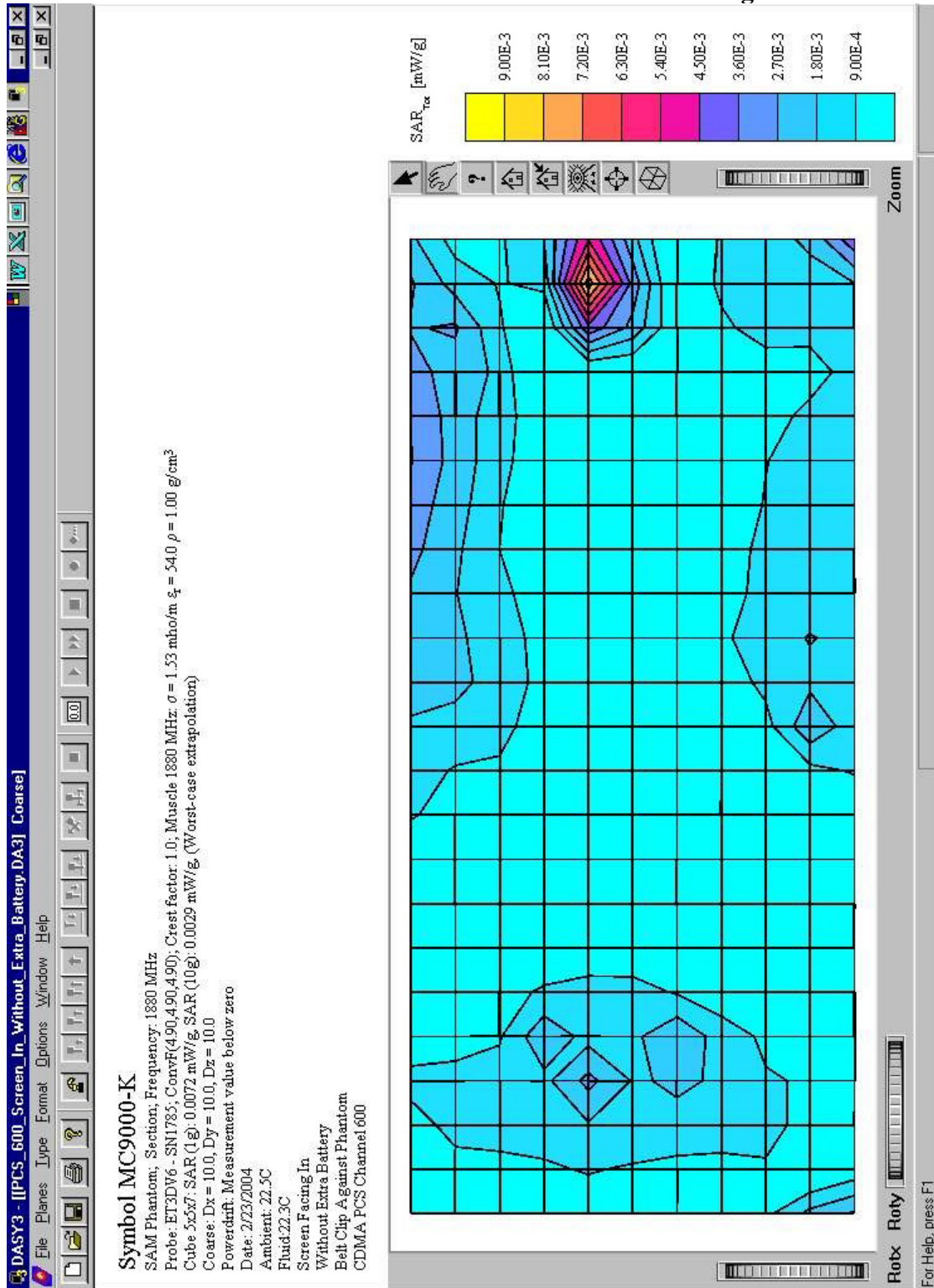
Symbol Technologies, Model No: MC9063
 FCC ID: H9PMC9063B

Exhibit 9: CDMA Cell Channel 384 Screen Facing Out With Extra Battery



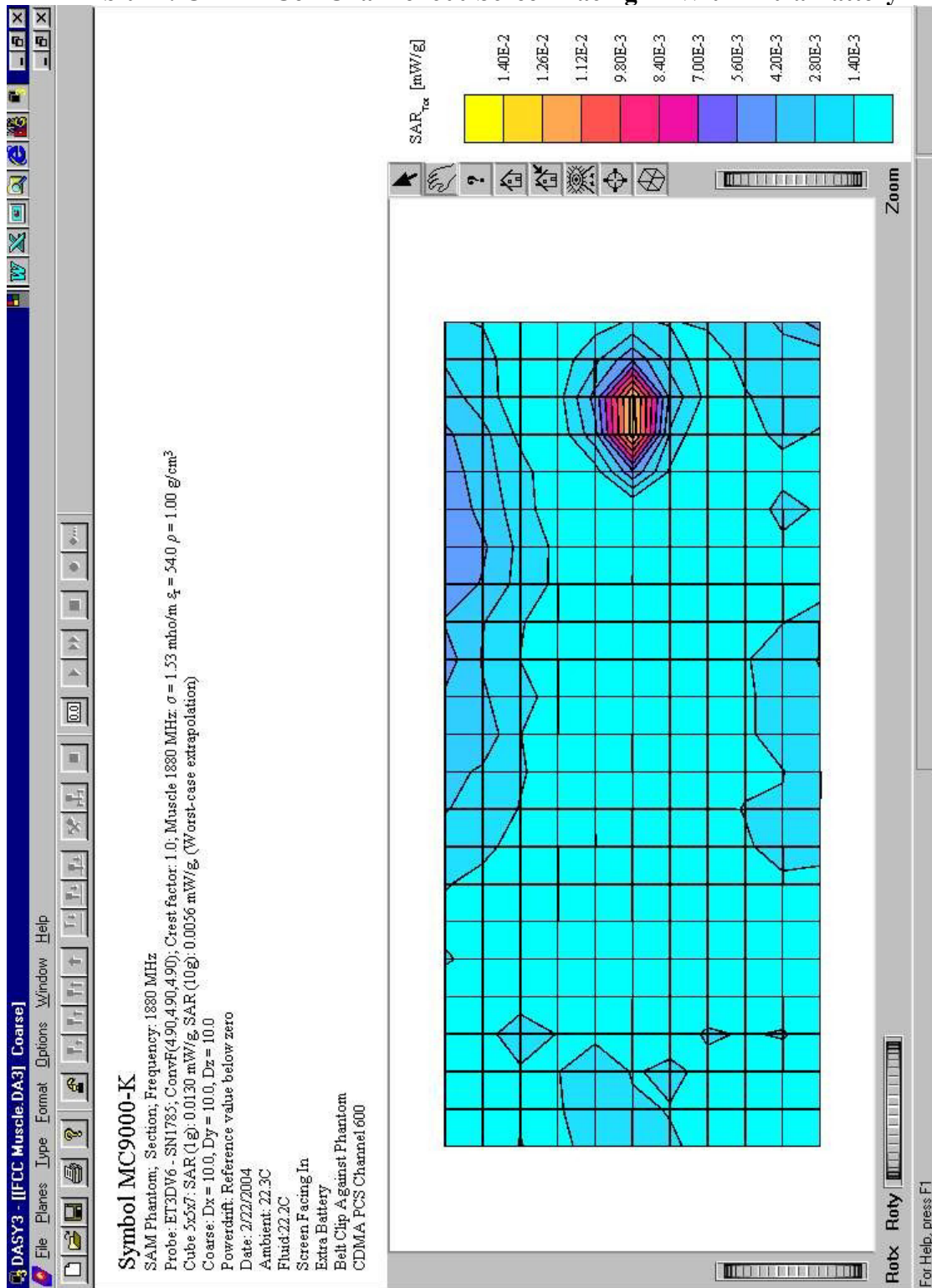
Symbol Technologies, Model No: MC9063
 FCC ID: H9PMC9063B

Exhibit 10: CDMA Cell Channel 600 Screen Facing In



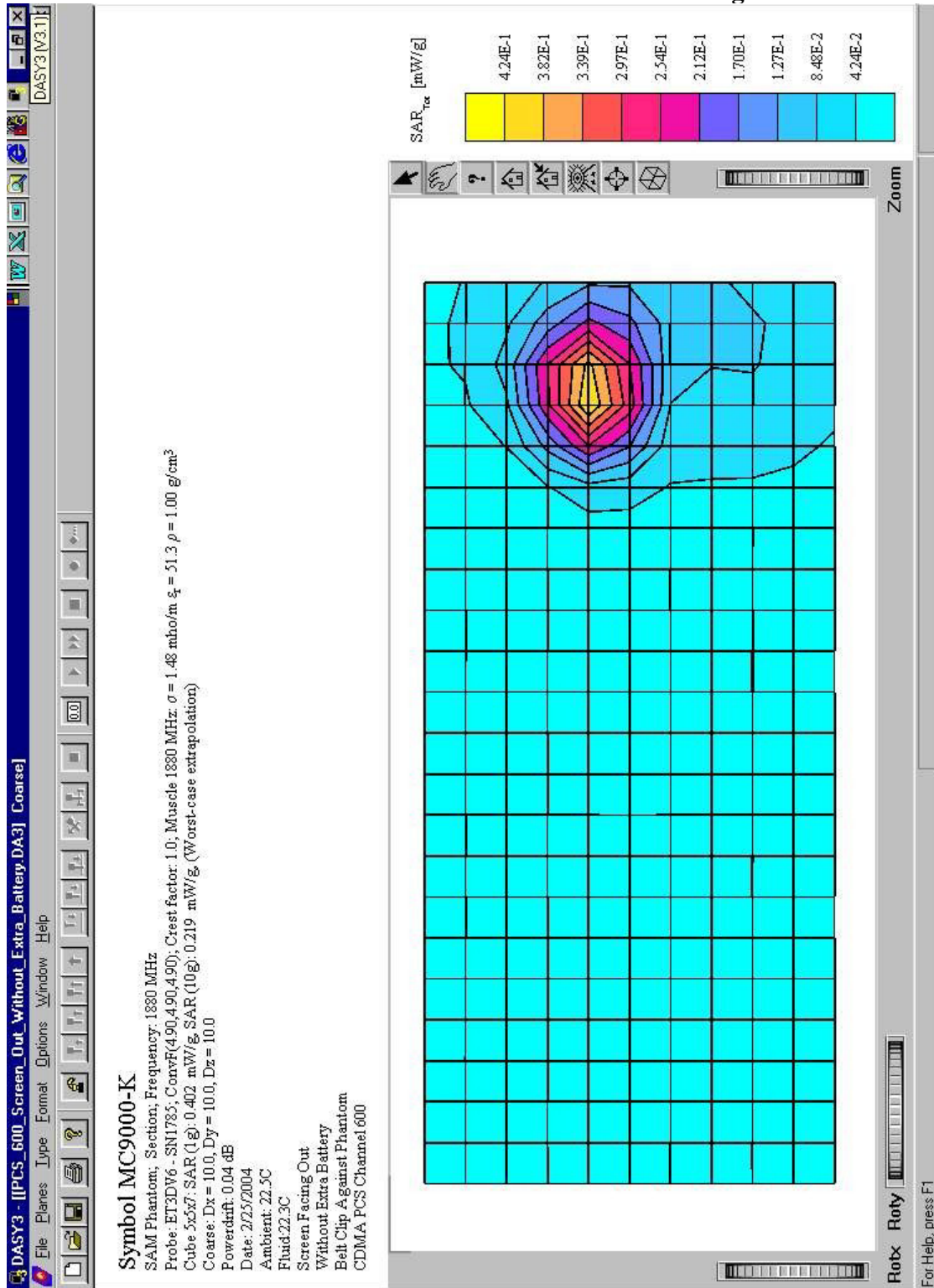
Symbol Technologies, Model No: MC9063
 FCC ID: H9PMC9063B

Exhibit 11: CDMA Cell Channel 600 Screen Facing In With Extra Battery



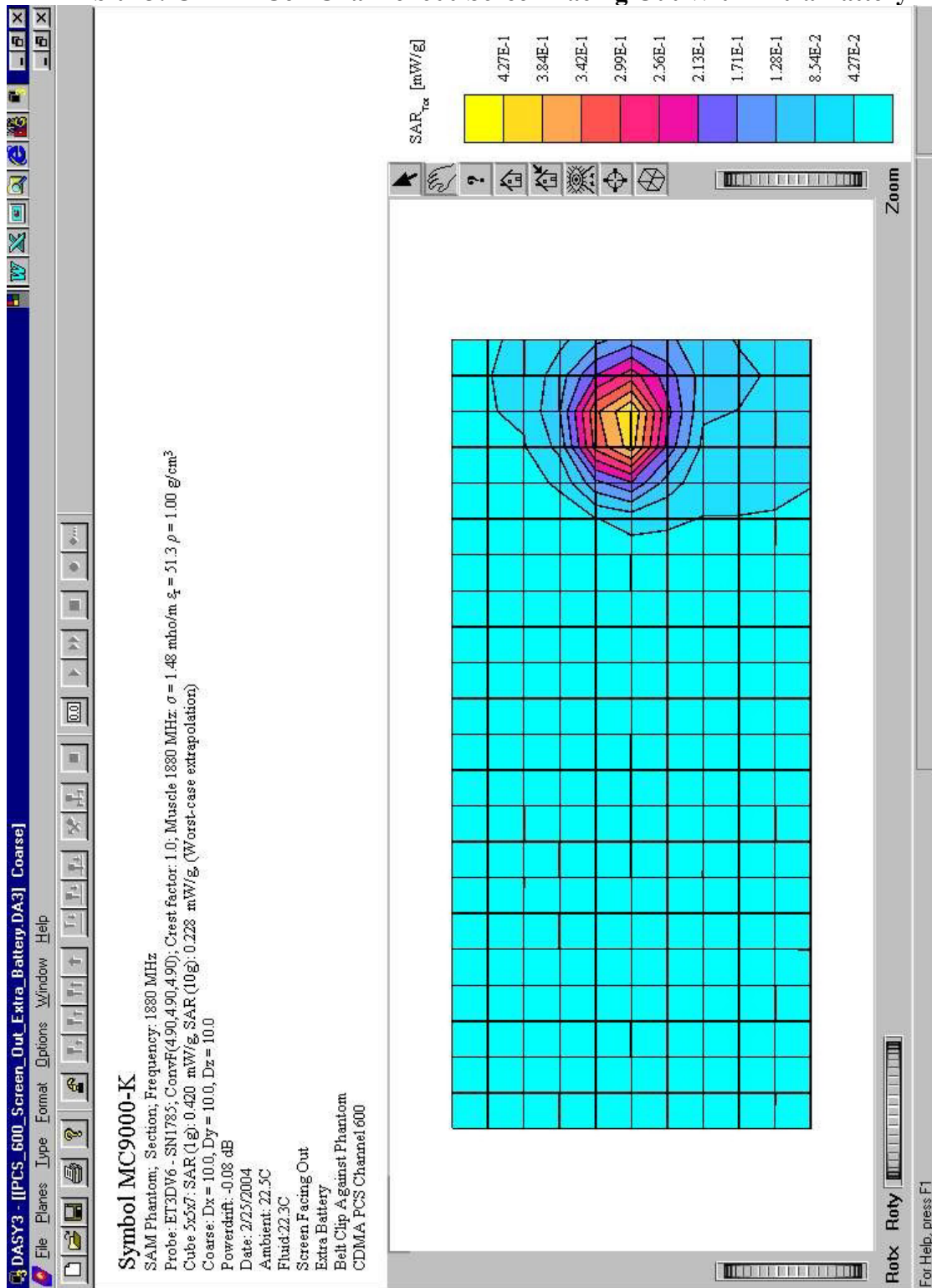
Symbol Technologies, Model No: MC9063
 FCC ID: H9PMC9063B

Exhibit 12: CDMA Cell Channel 600 Screen Facing Out



Symbol Technologies, Model No: MC9063
 FCC ID: H9PMC9063B

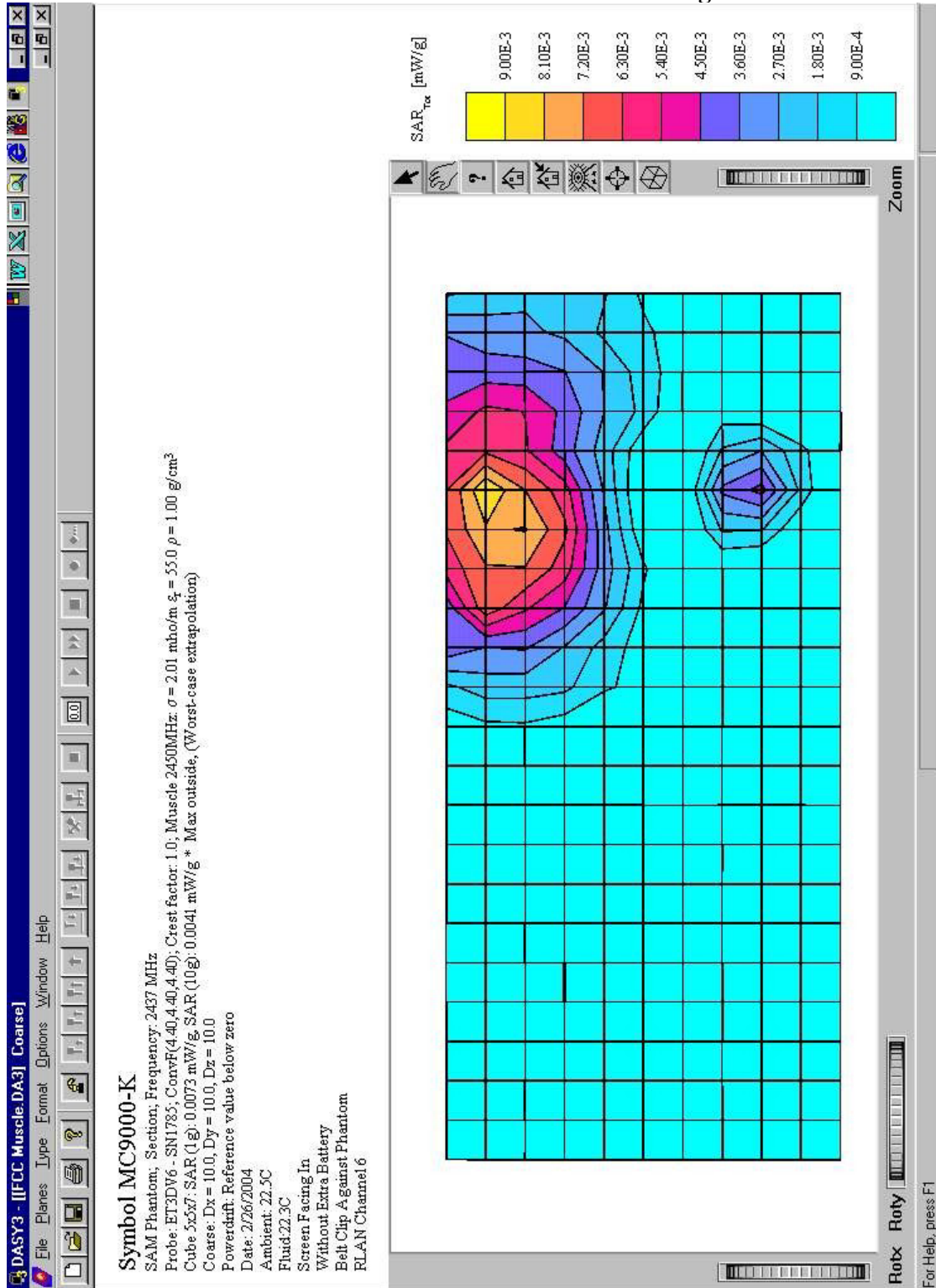
Exhibit 13: CDMA Cell Channel 600 Screen Facing Out With Extra Battery



Symbol Technologies, Model No: MC9063
 FCC ID: H9PMC9063B

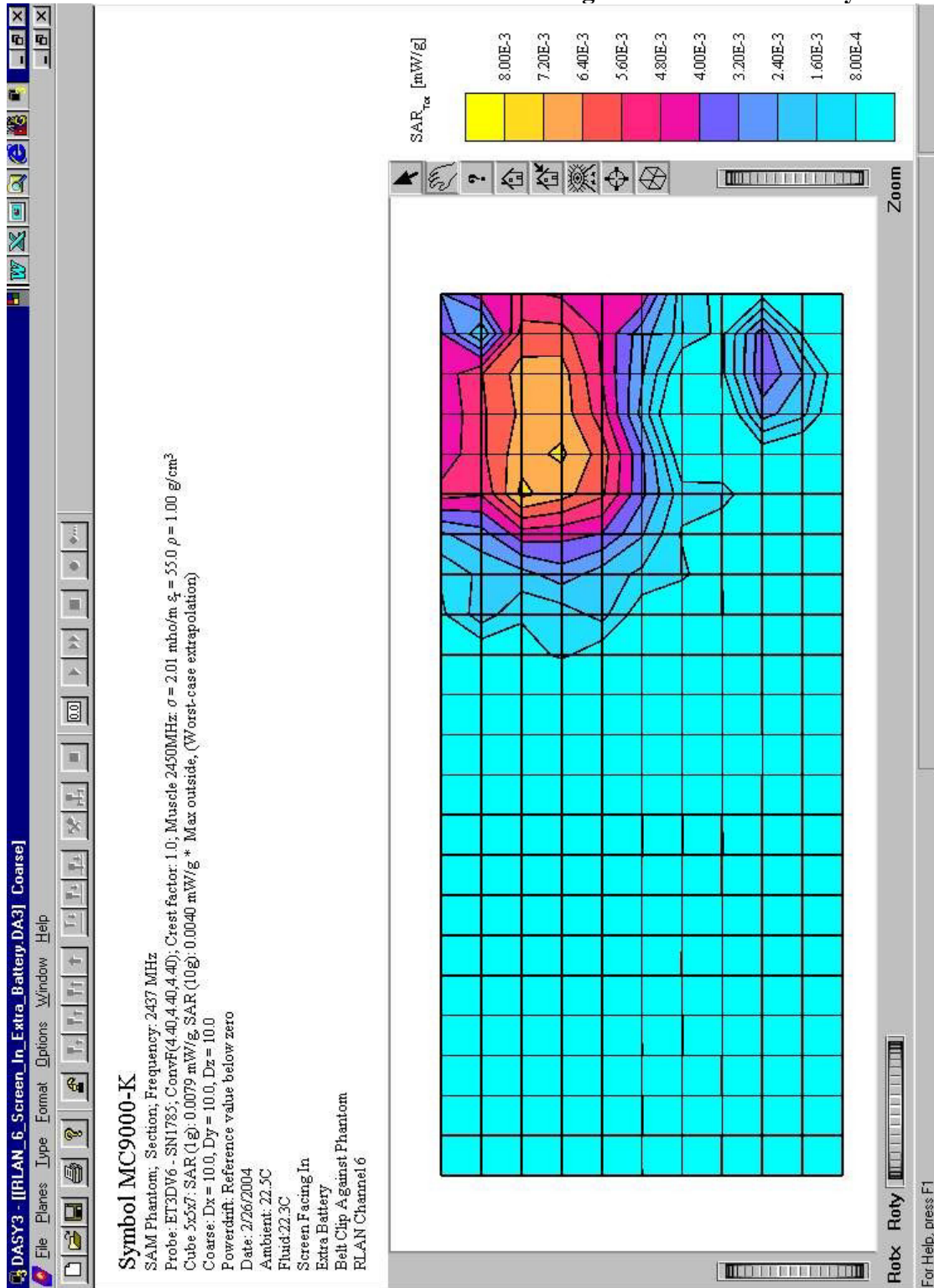
SAR PLOTS FOR RLAN BANDS

Exhibit 14: RLAN Channel 6 Screen Facing In



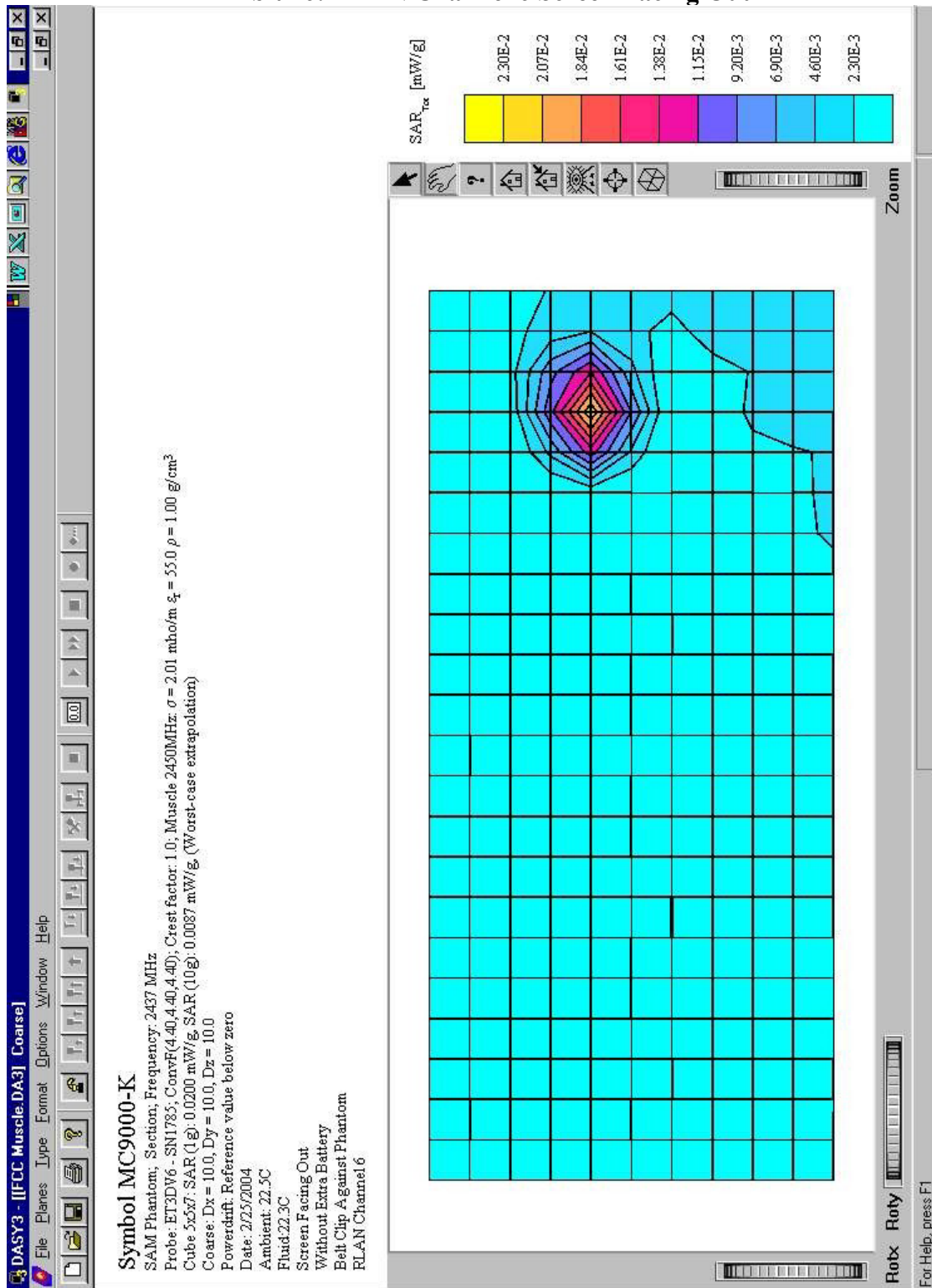
Symbol Technologies, Model No: MC9063
 FCC ID: H9PMC9063B

Exhibit 15: RLAN Channel 6 Screen Facing In With Extra Battery



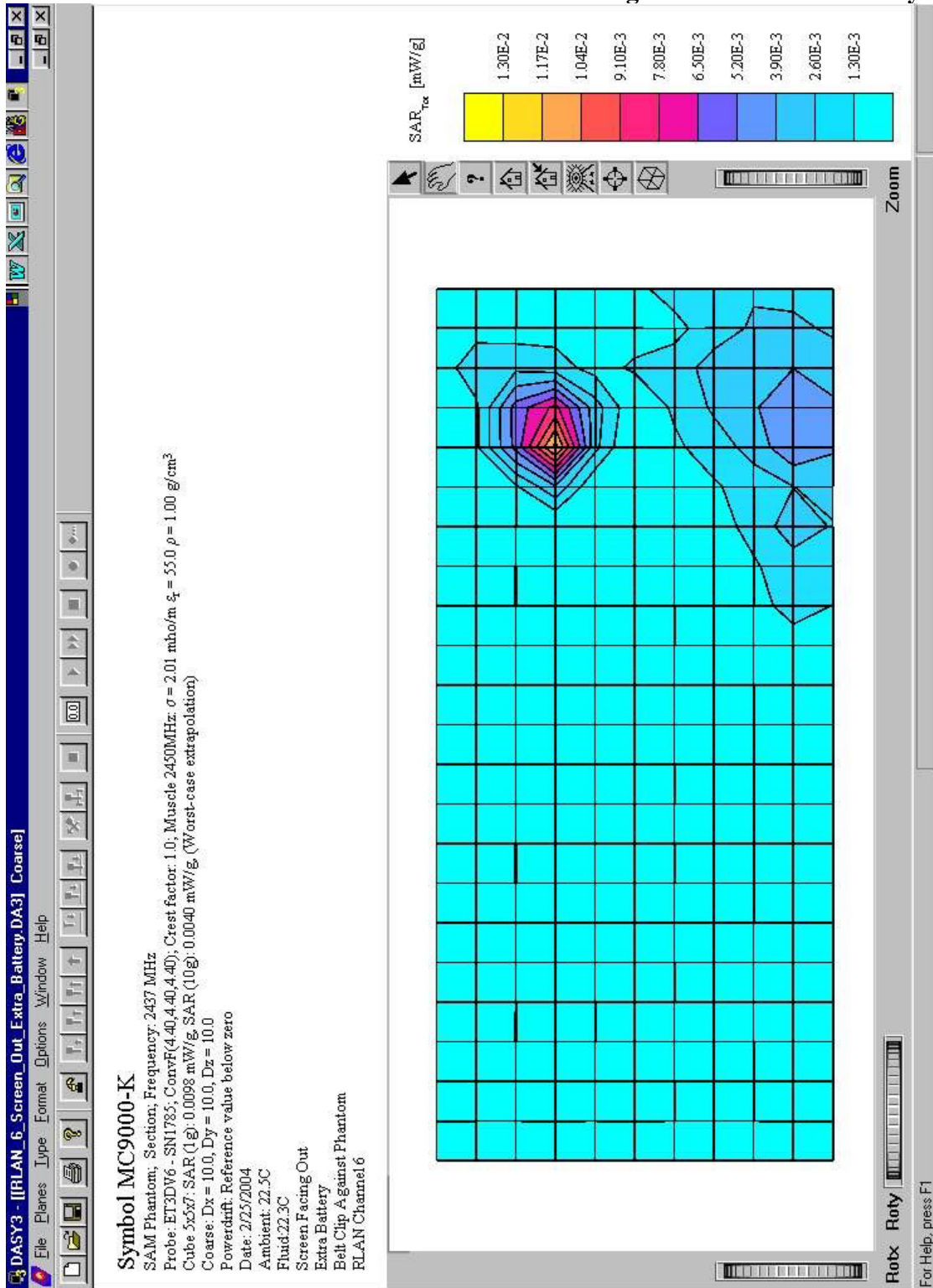
Symbol Technologies, Model No: MC9063
 FCC ID: H9PMC9063B

Exhibit 16: RLAN Channel 6 Screen Facing Out



Symbol Technologies, Model No: MC9063
 FCC ID: H9PMC9063B

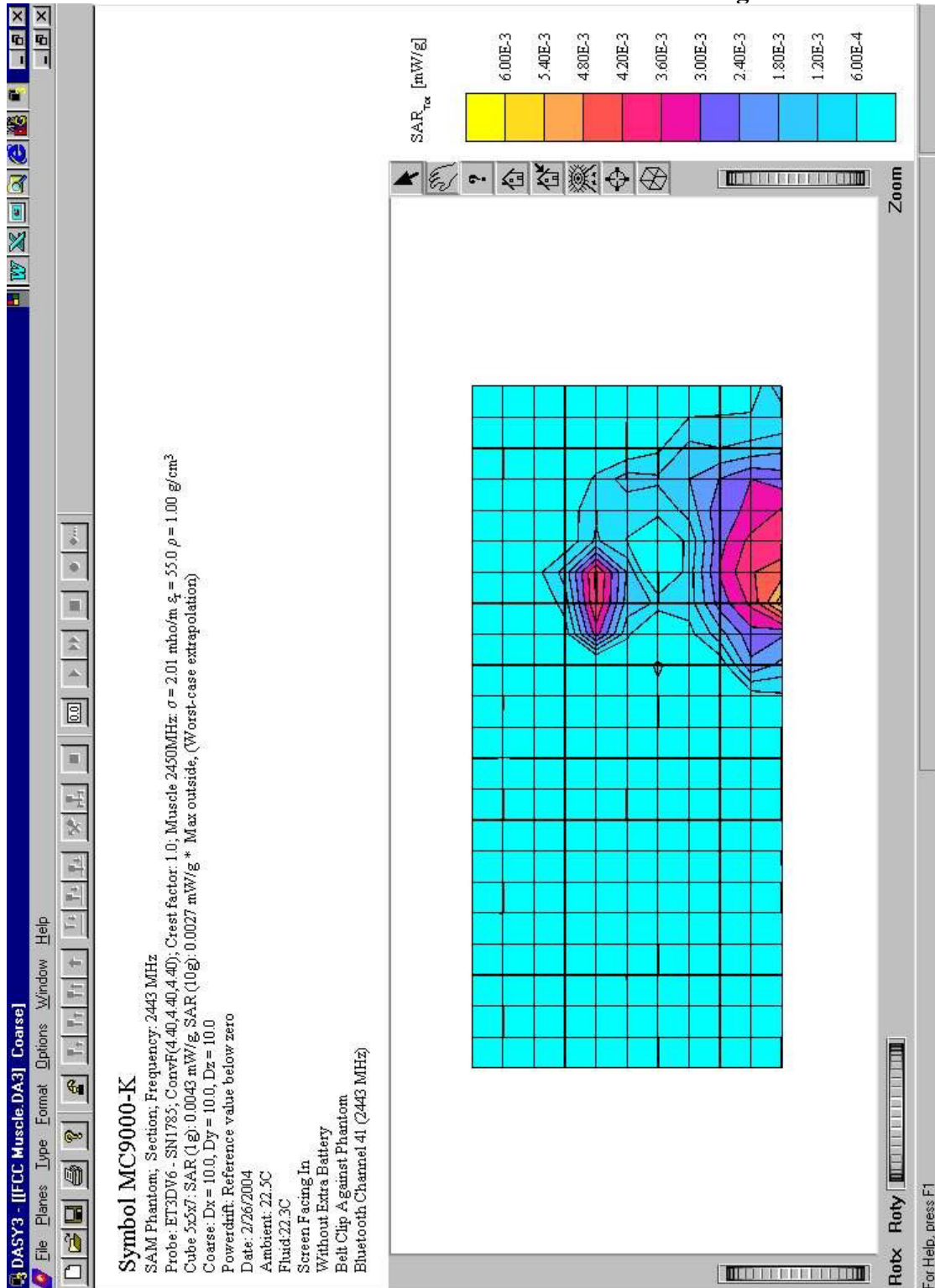
Exhibit 17: RLAN Channel 6 Screen Facing Out With Extra Battery



Symbol Technologies, Model No: MC9063
 FCC ID: H9PMC9063B

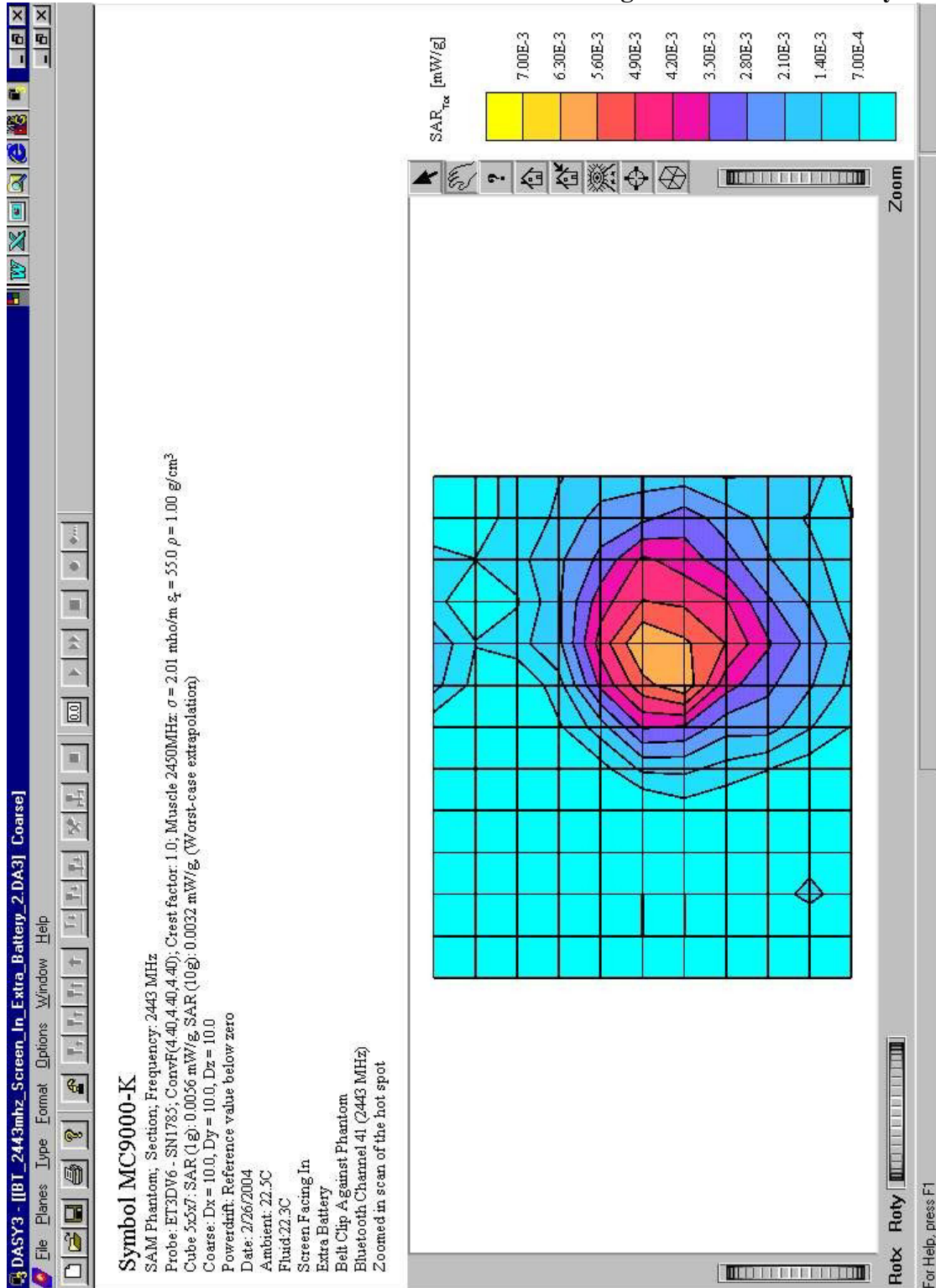
SAR PLOTS FOR BLUETOOTH BANDS

Exhibit 18: Bluetooth Channel 2443 Screen Facing In



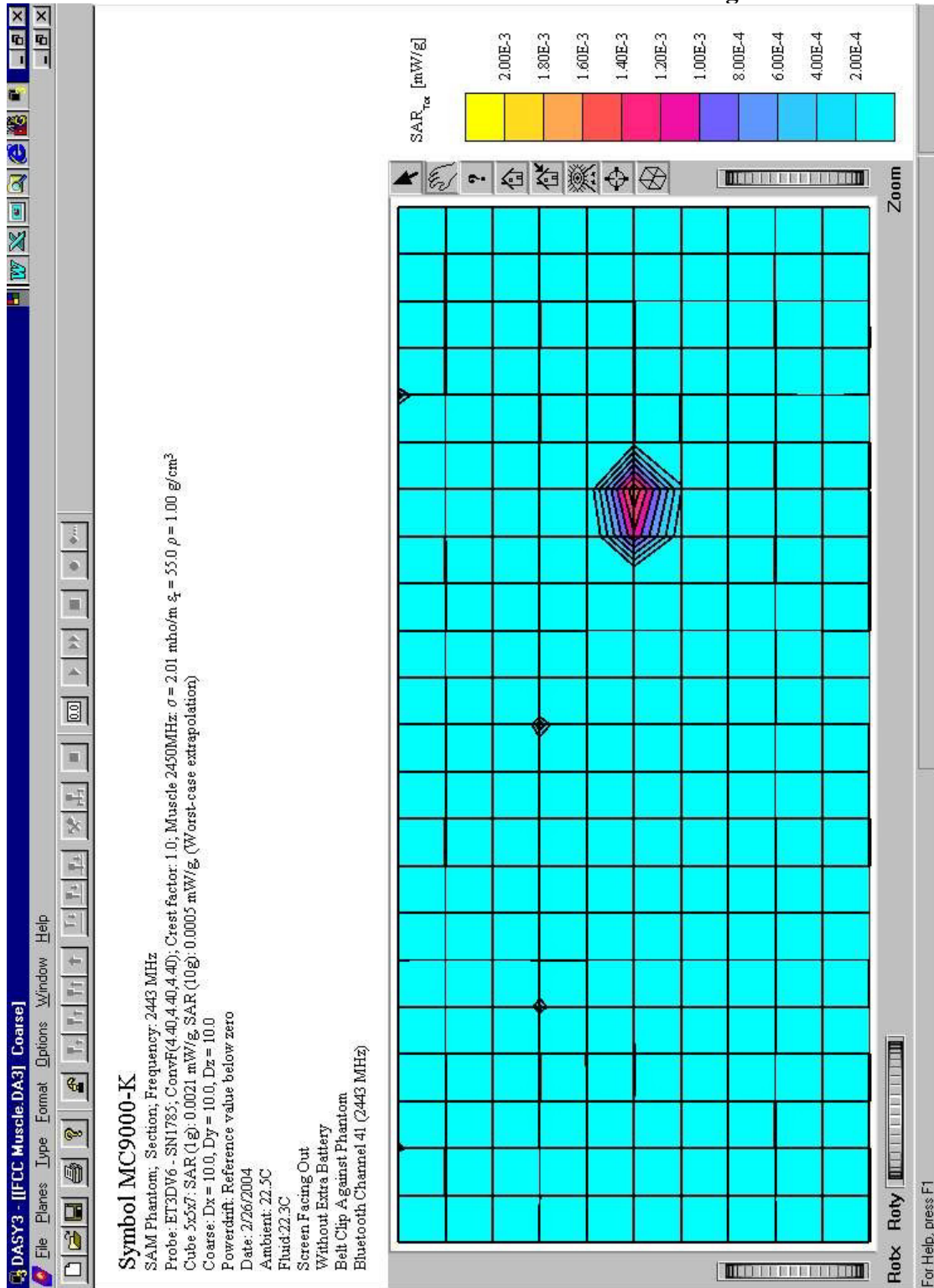
Symbol Technologies, Model No: MC9063
 FCC ID: H9PMC9063B

Exhibit 19: Bluetooth Channel 2443 Screen Facing In With Extra Battery



Symbol Technologies, Model No: MC9063
 FCC ID: H9PMC9063B

Exhibit 20: Bluetooth Channel 2443 Screen Facing Out



Symbol Technologies, Model No: MC9063
 FCC ID: H9PMC9063B

Exhibit 21: Bluetooth Channel 2443 Screen Facing Out With Extra Battery

