

Symbol Technologies, Model No: MC9063  
FCC ID: H9PMC9063B

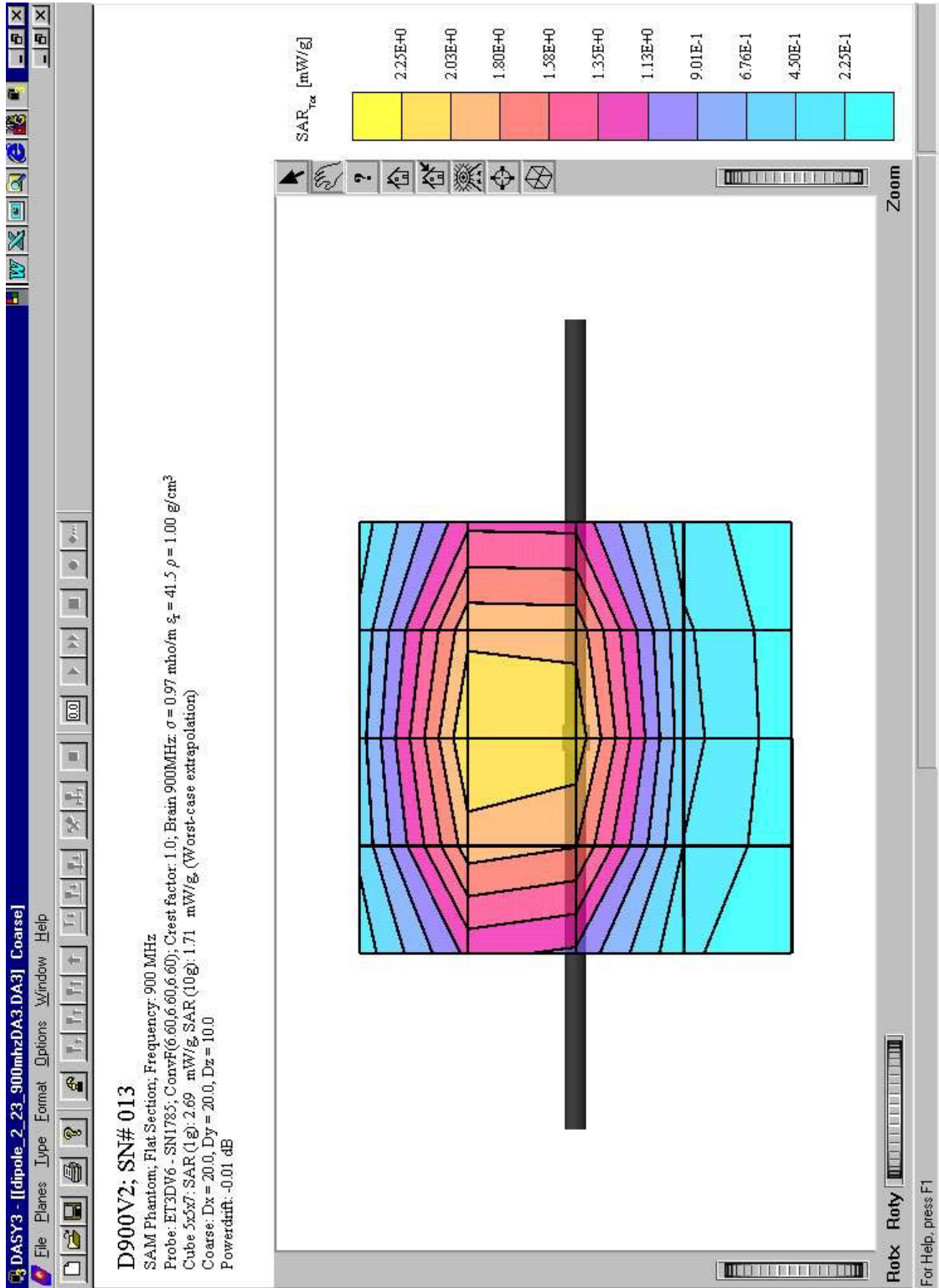
## **1.0 GRAPHICAL TEST RESULTS**

Please note that the graphical visualization of the phone position onto the SAR distribution gives only limited information on the current distribution of the device, since the curvature of the head results in graphical distortion. Full information can only be obtained either by H-field scans in free space or SAR evaluation with a flat phantom.

Symbol Technologies, Model No: MC9063  
 FCC ID: H9PMC9063B

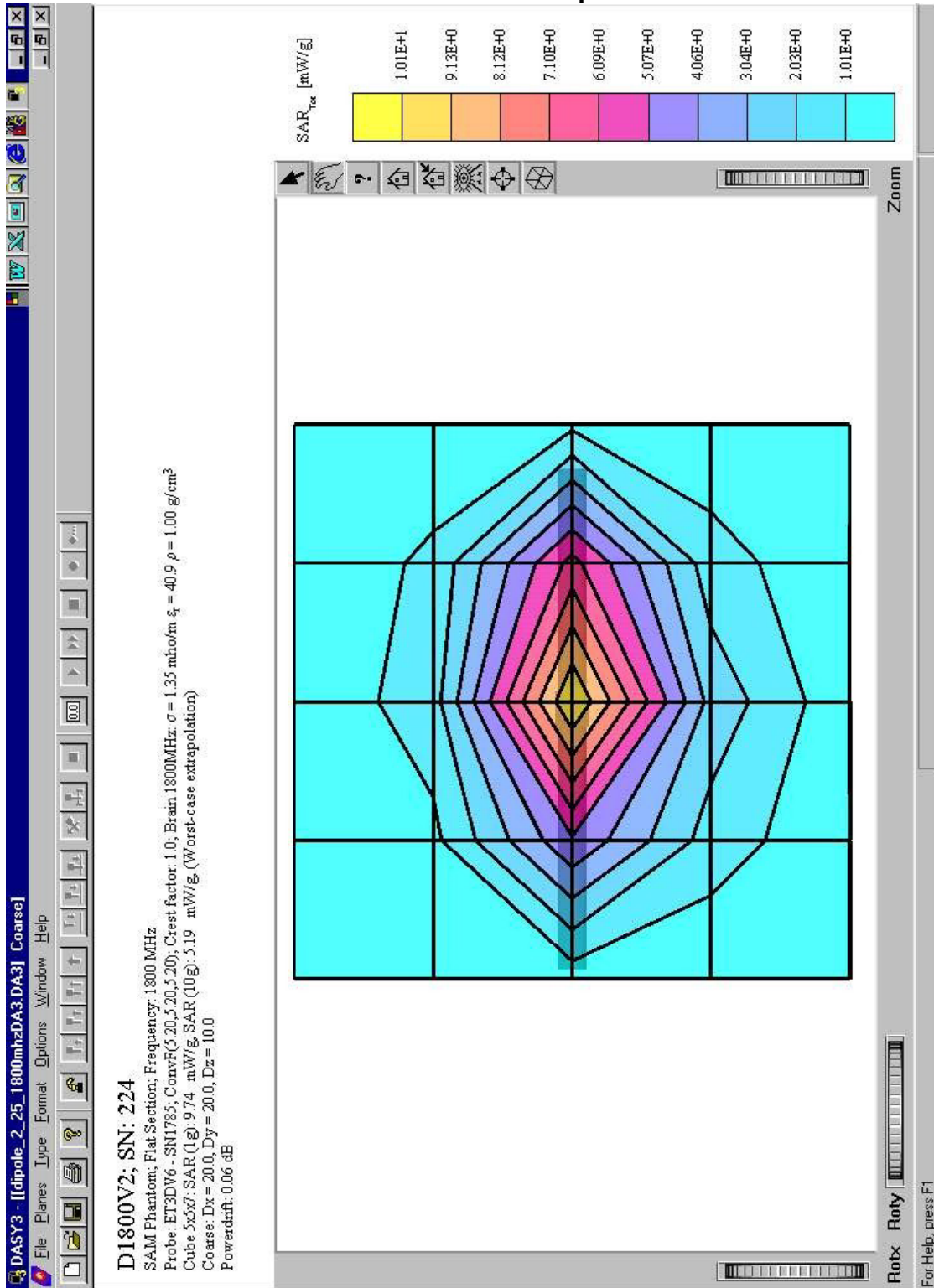
**SAR PLOTS FOR SYSTEM VERIFICATION**

**Exhibit 1: 900 MHz Dipole Validation**



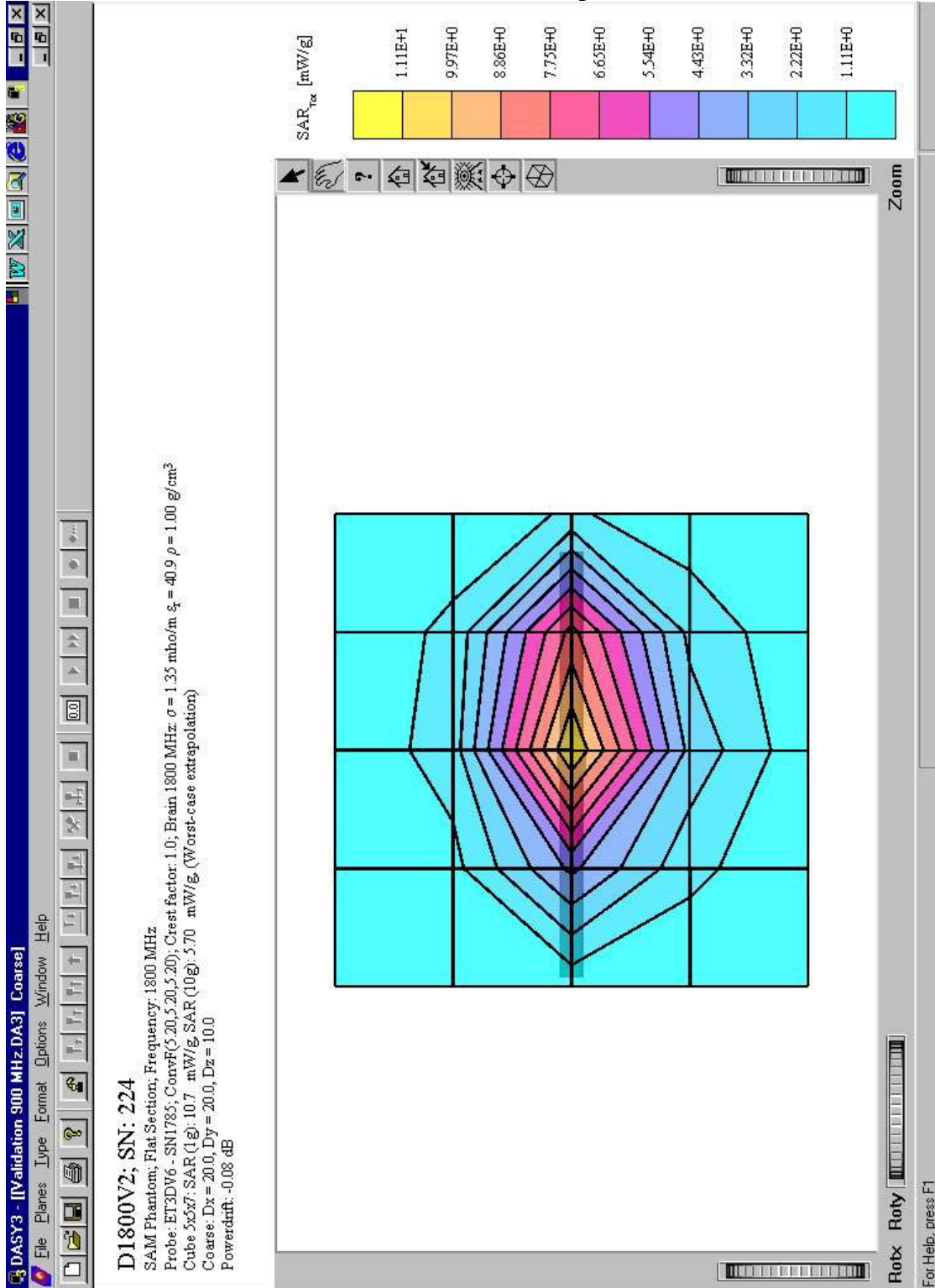
Symbol Technologies, Model No: MC9063  
 FCC ID: H9PMC9063B

**Exhibit 2: 1800 MHz Dipole Validation**



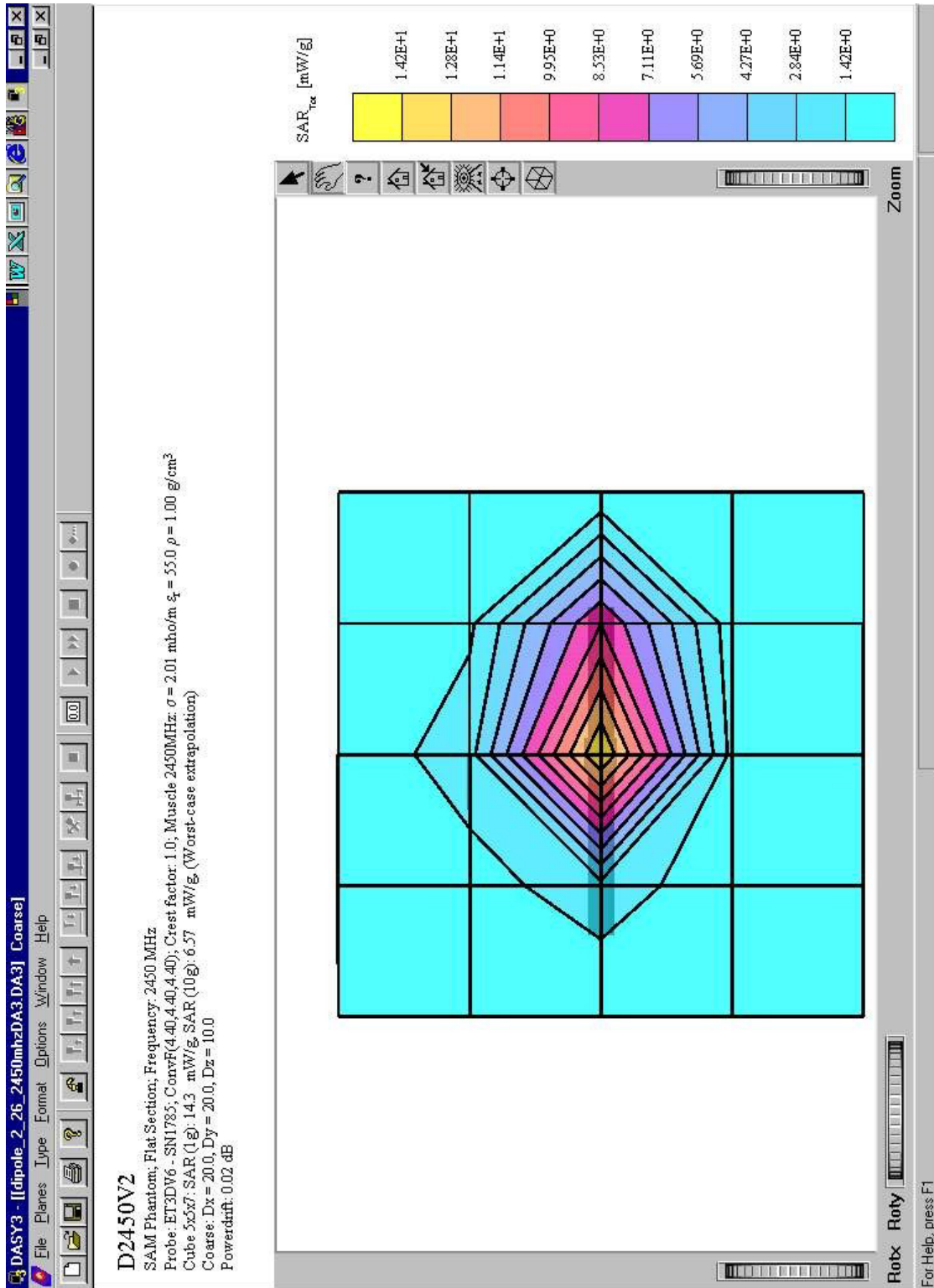
Symbol Technologies, Model No: MC9063  
 FCC ID: H9PMC9063B

**Exhibit 3: 1800 MHz Dipole Validation**



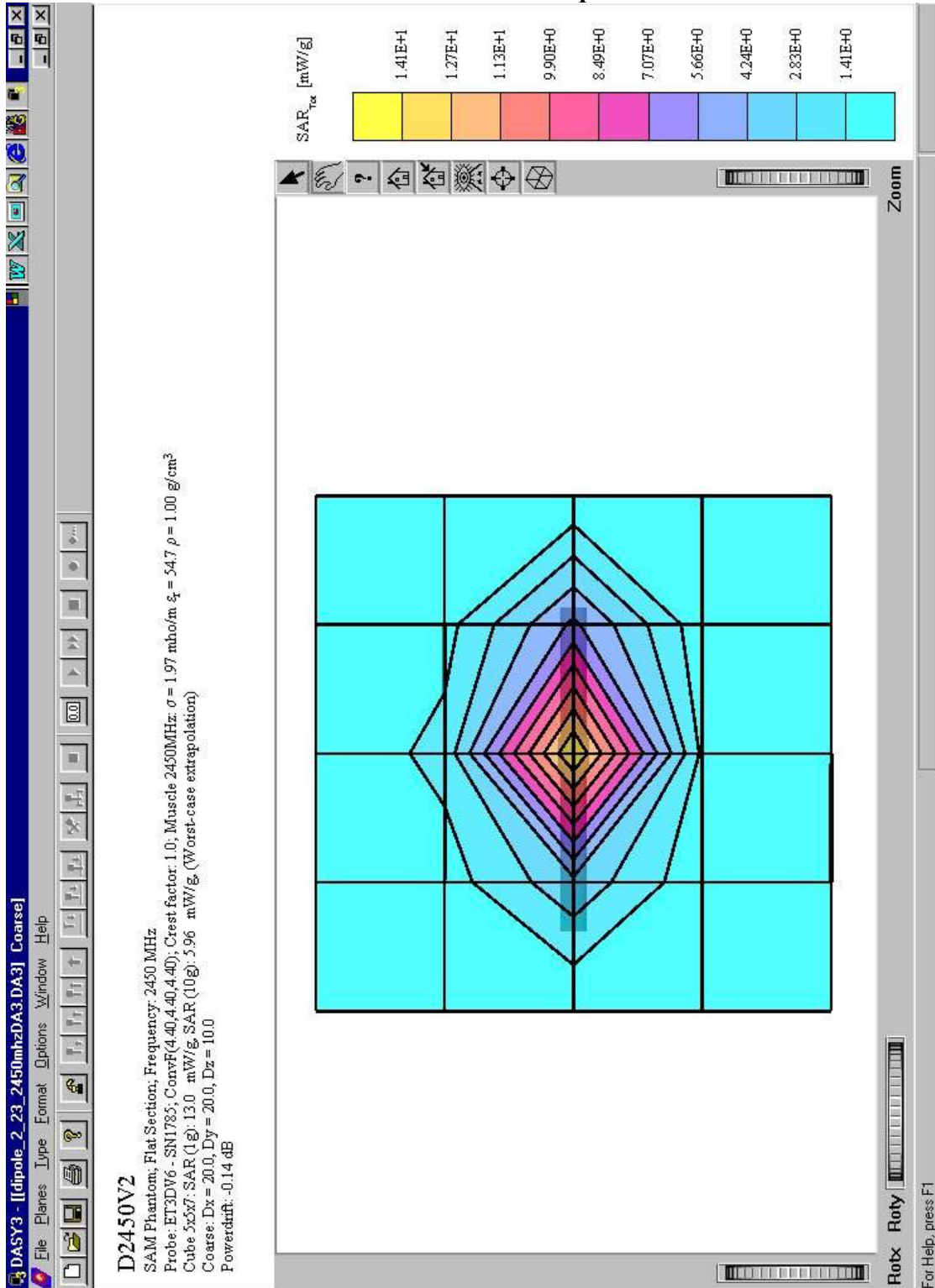
Symbol Technologies, Model No: MC9063  
 FCC ID: H9PMC9063B

**Exhibit 4: 2450 MHz Dipole Validation**



Symbol Technologies, Model No: MC9063  
 FCC ID: H9PMC9063B

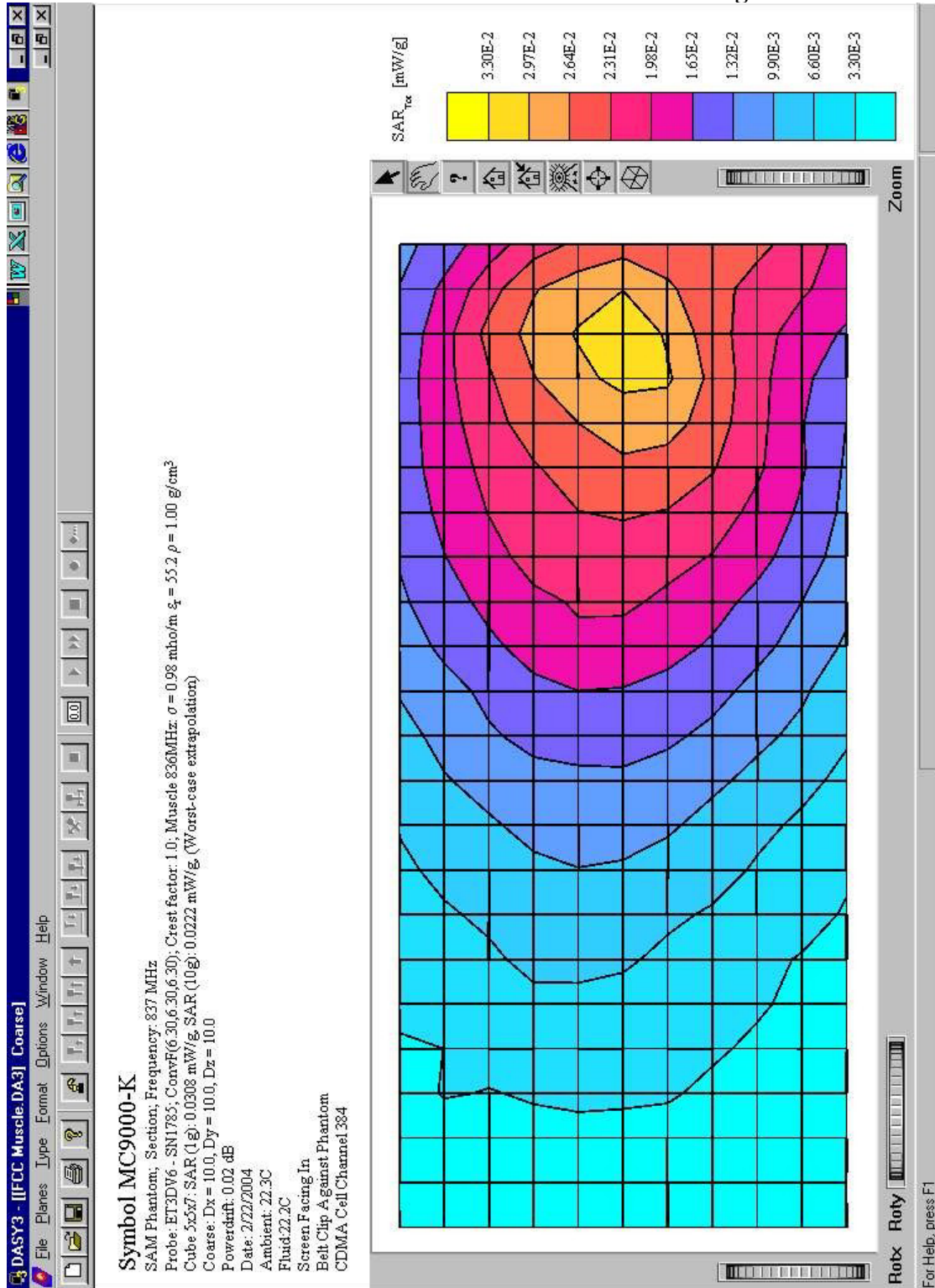
**Exhibit 5: 2450 MHz Dipole Validation**



Symbol Technologies, Model No: MC9063  
 FCC ID: H9PMC9063B

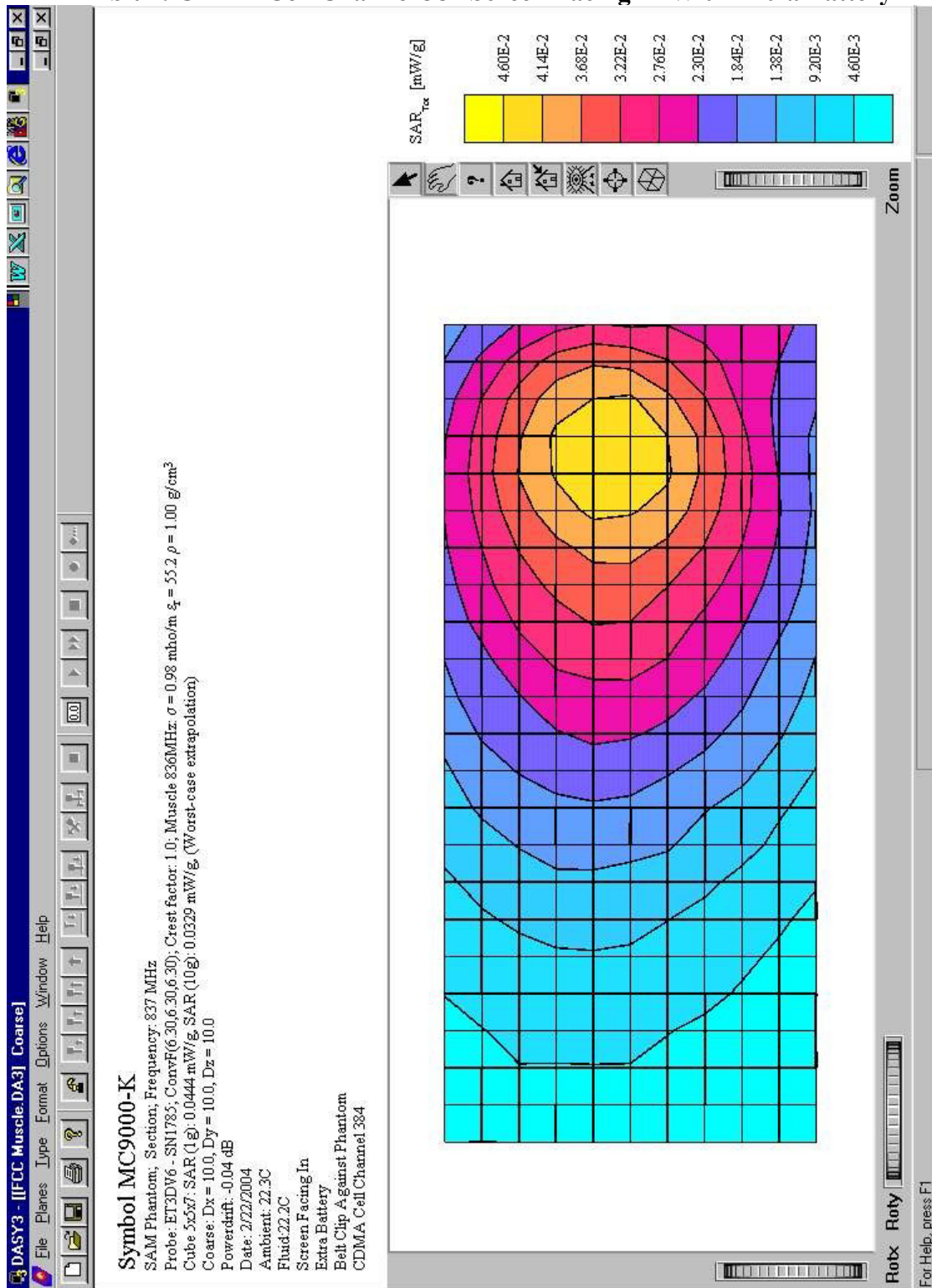
**SAR PLOTS FOR CDMA CELL AND PCS BANDS**

**Exhibit 6: CDMA Cell Channel 384 Screen Facing In**



Symbol Technologies, Model No: MC9063  
 FCC ID: H9PMC9063B

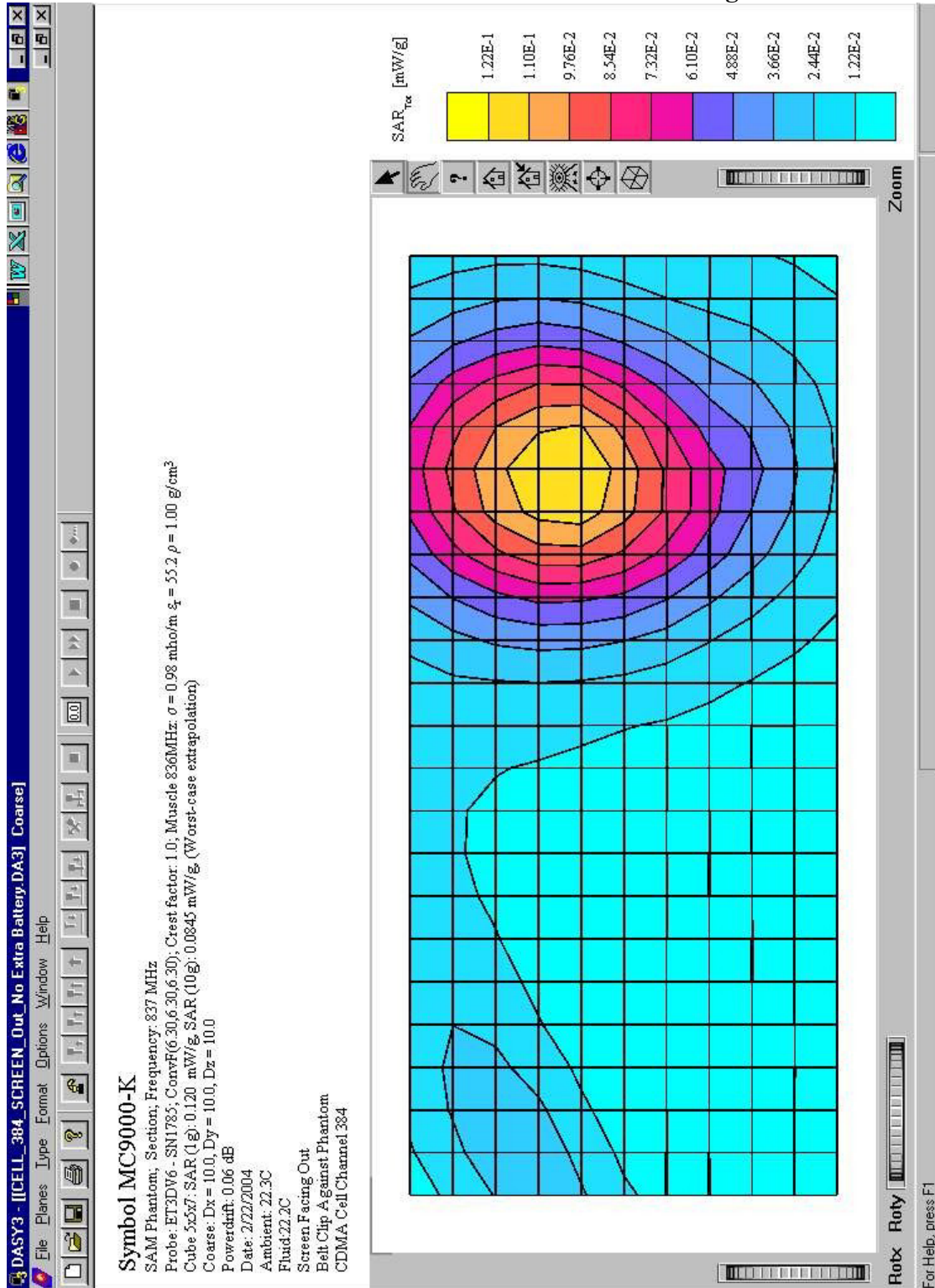
**Exhibit 7: CDMA Cell Channel 384 Screen Facing In With Extra Battery**





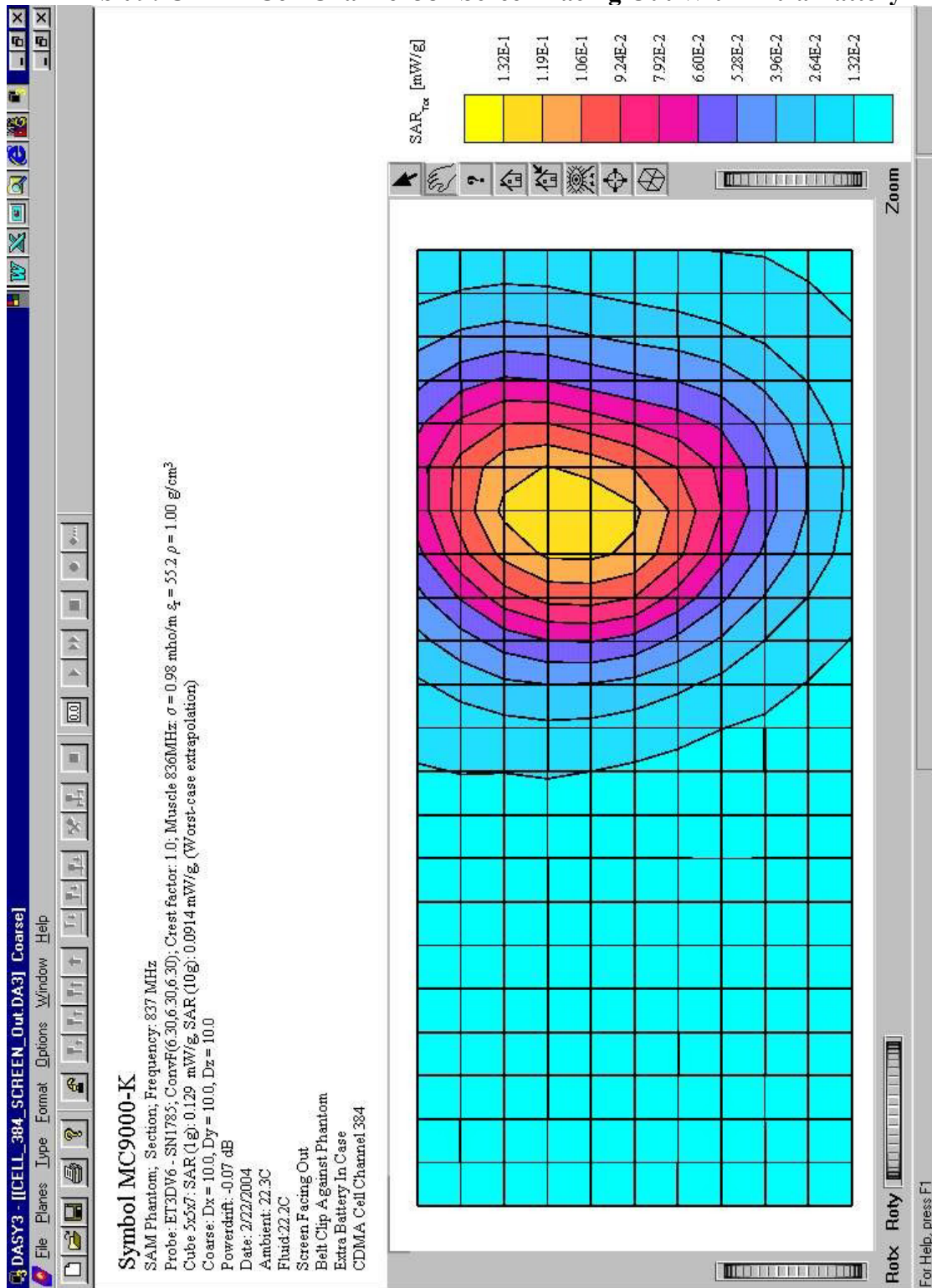
Symbol Technologies, Model No: MC9063  
 FCC ID: H9PMC9063B

**Exhibit 8: CDMA Cell Channel 384 Screen Facing Out**



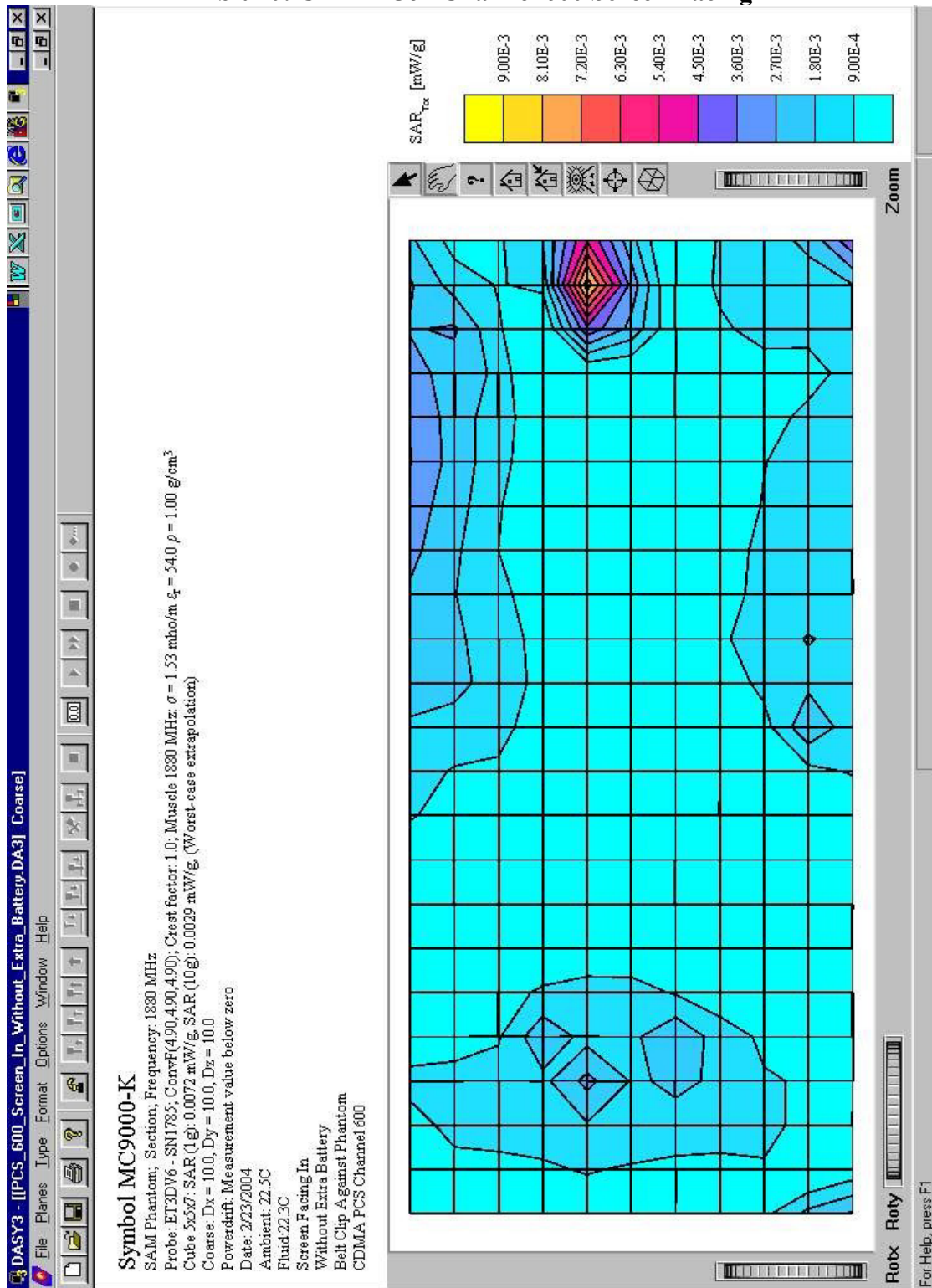
Symbol Technologies, Model No: MC9063  
 FCC ID: H9PMC9063B

**Exhibit 9: CDMA Cell Channel 384 Screen Facing Out With Extra Battery**



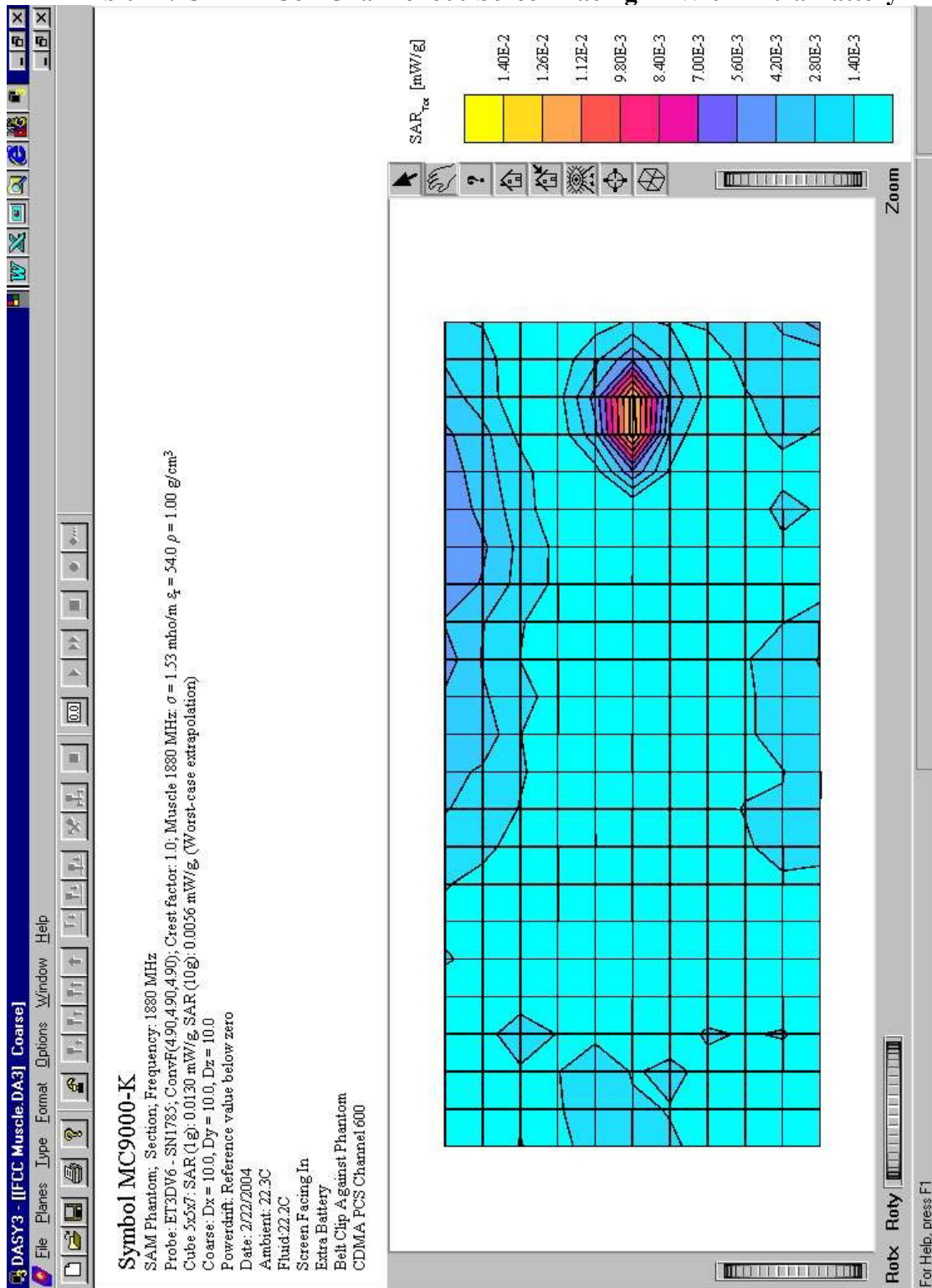
Symbol Technologies, Model No: MC9063  
 FCC ID: H9PMC9063B

**Exhibit 10: CDMA Cell Channel 600 Screen Facing In**



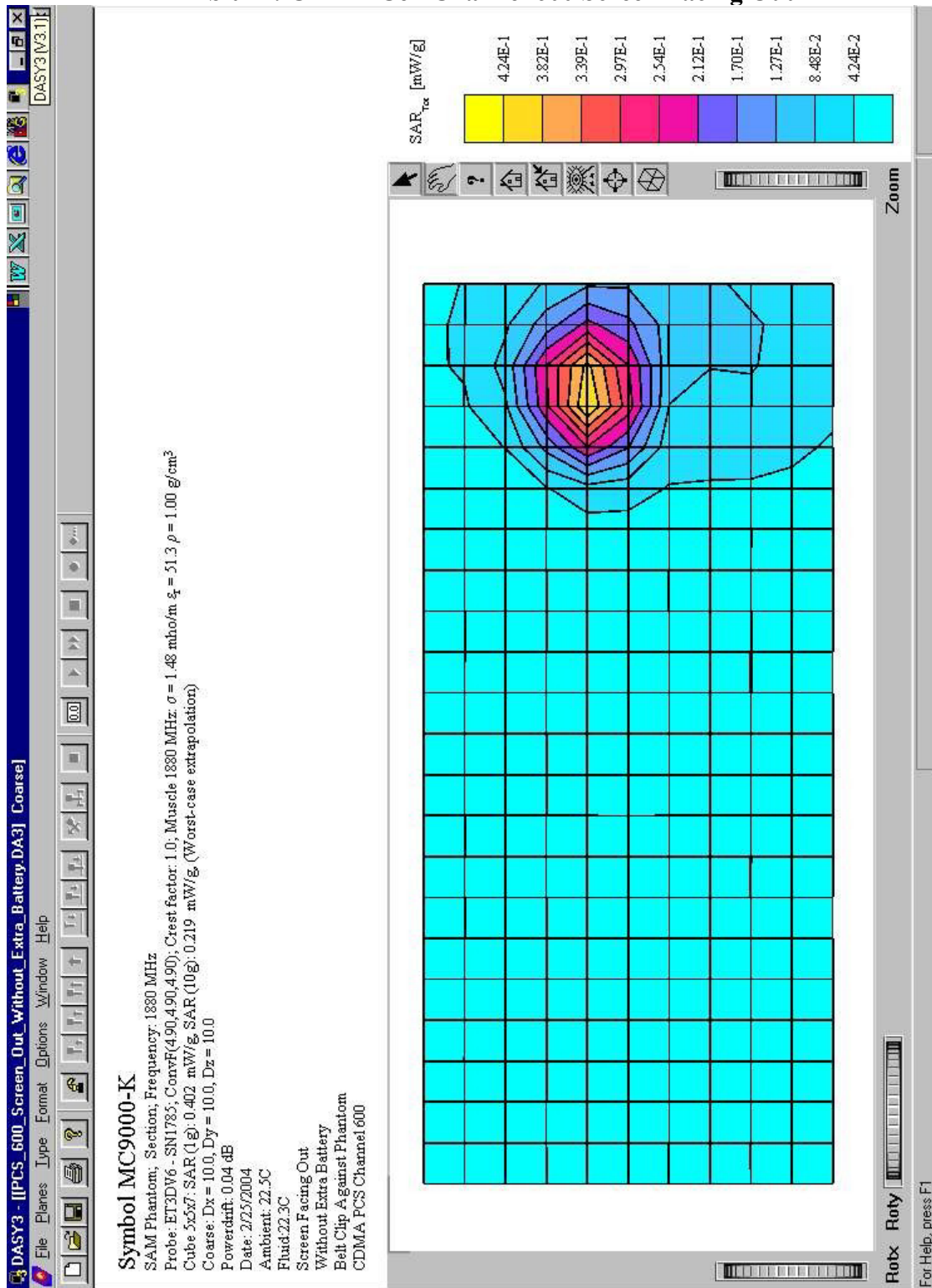
Symbol Technologies, Model No: MC9063  
 FCC ID: H9PMC9063B

**Exhibit 11: CDMA Cell Channel 600 Screen Facing In With Extra Battery**



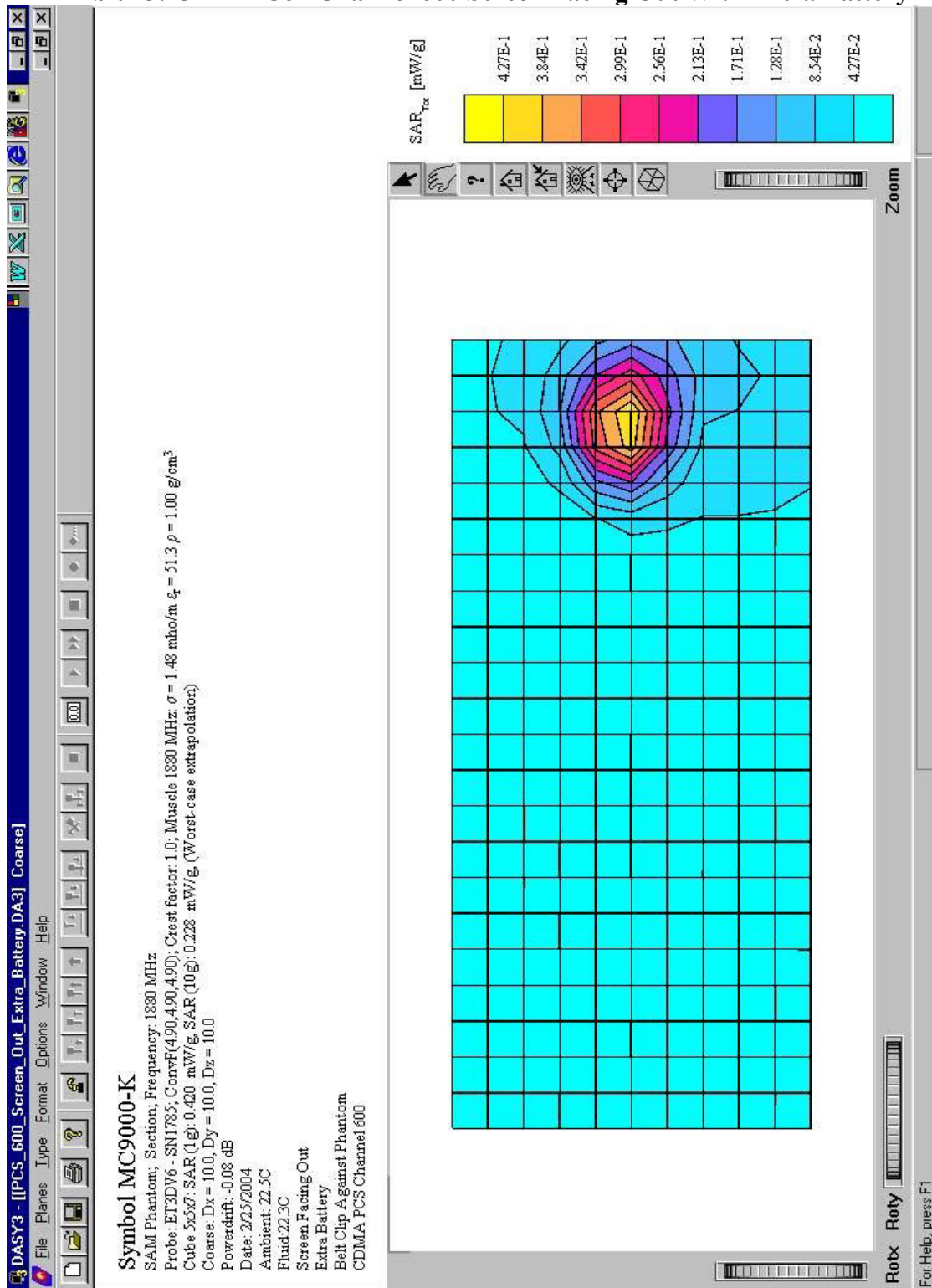
Symbol Technologies, Model No: MC9063  
 FCC ID: H9PMC9063B

**Exhibit 12: CDMA Cell Channel 600 Screen Facing Out**



Symbol Technologies, Model No: MC9063  
 FCC ID: H9PMC9063B

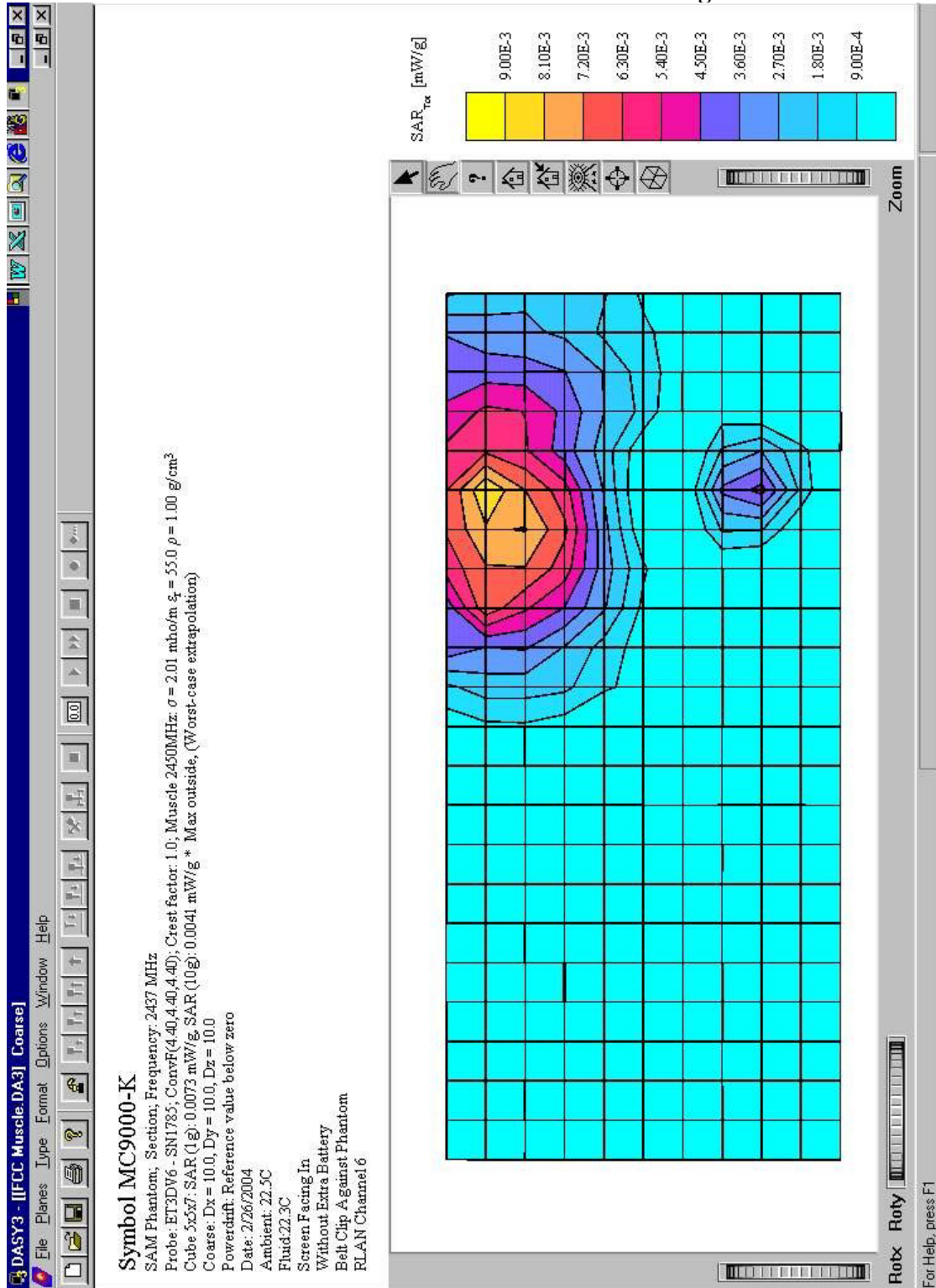
**Exhibit 13: CDMA Cell Channel 600 Screen Facing Out With Extra Battery**



Symbol Technologies, Model No: MC9063  
 FCC ID: H9PMC9063B

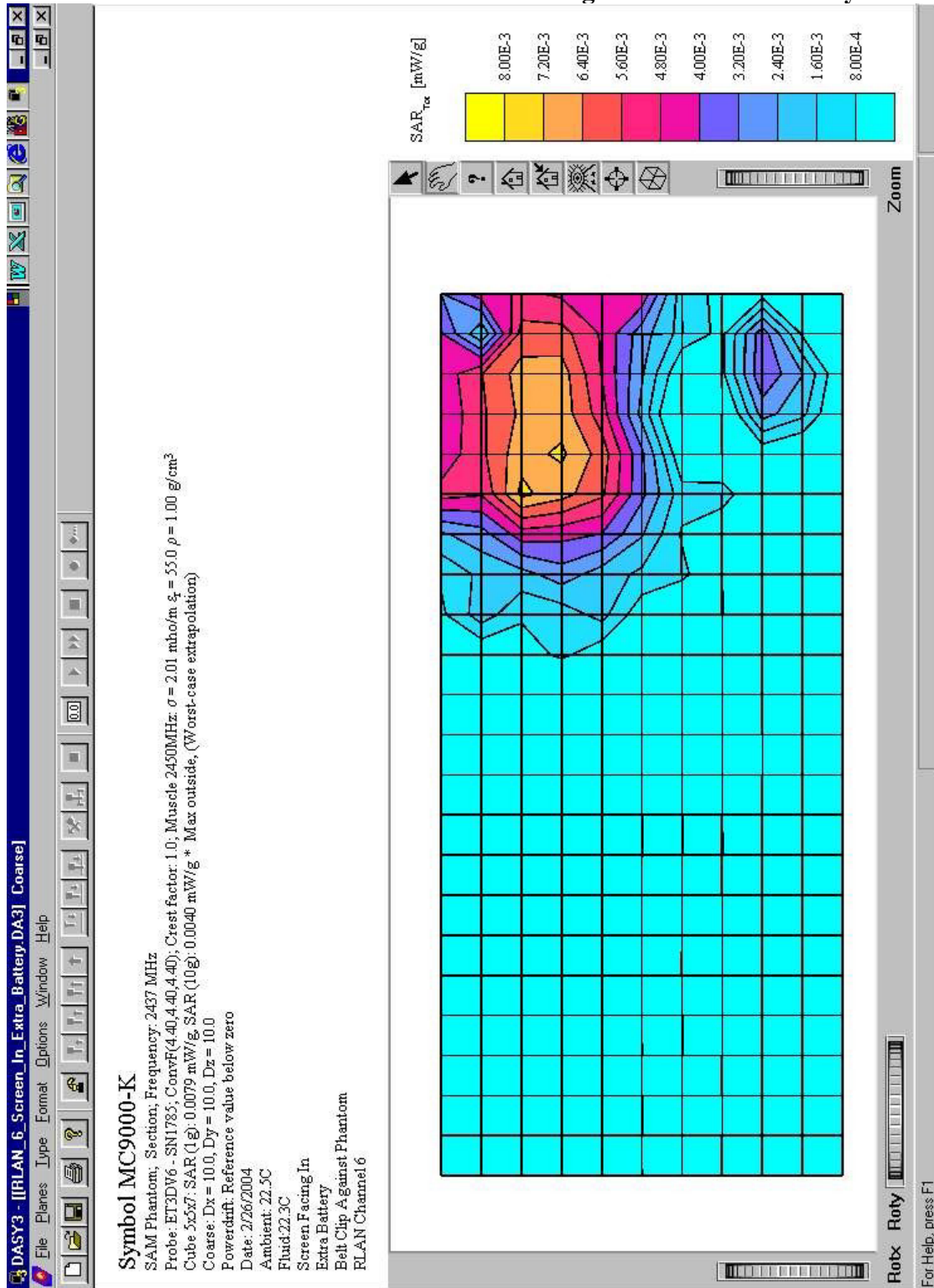
**SAR PLOTS FOR RLAN BANDS**

**Exhibit 14: RLAN Channel 6 Screen Facing In**



Symbol Technologies, Model No: MC9063  
 FCC ID: H9PMC9063B

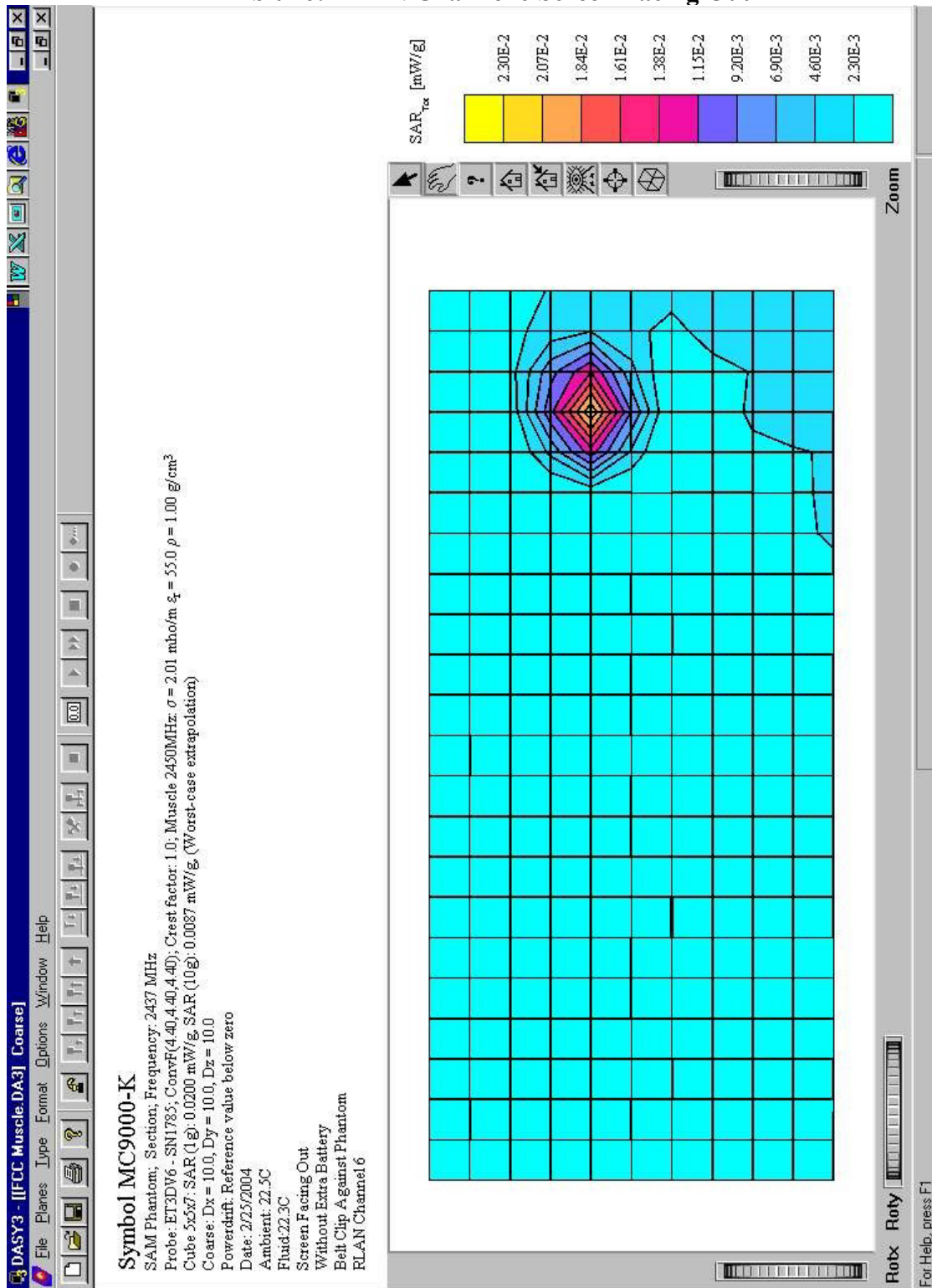
**Exhibit 15: RLAN Channel 6 Screen Facing In With Extra Battery**





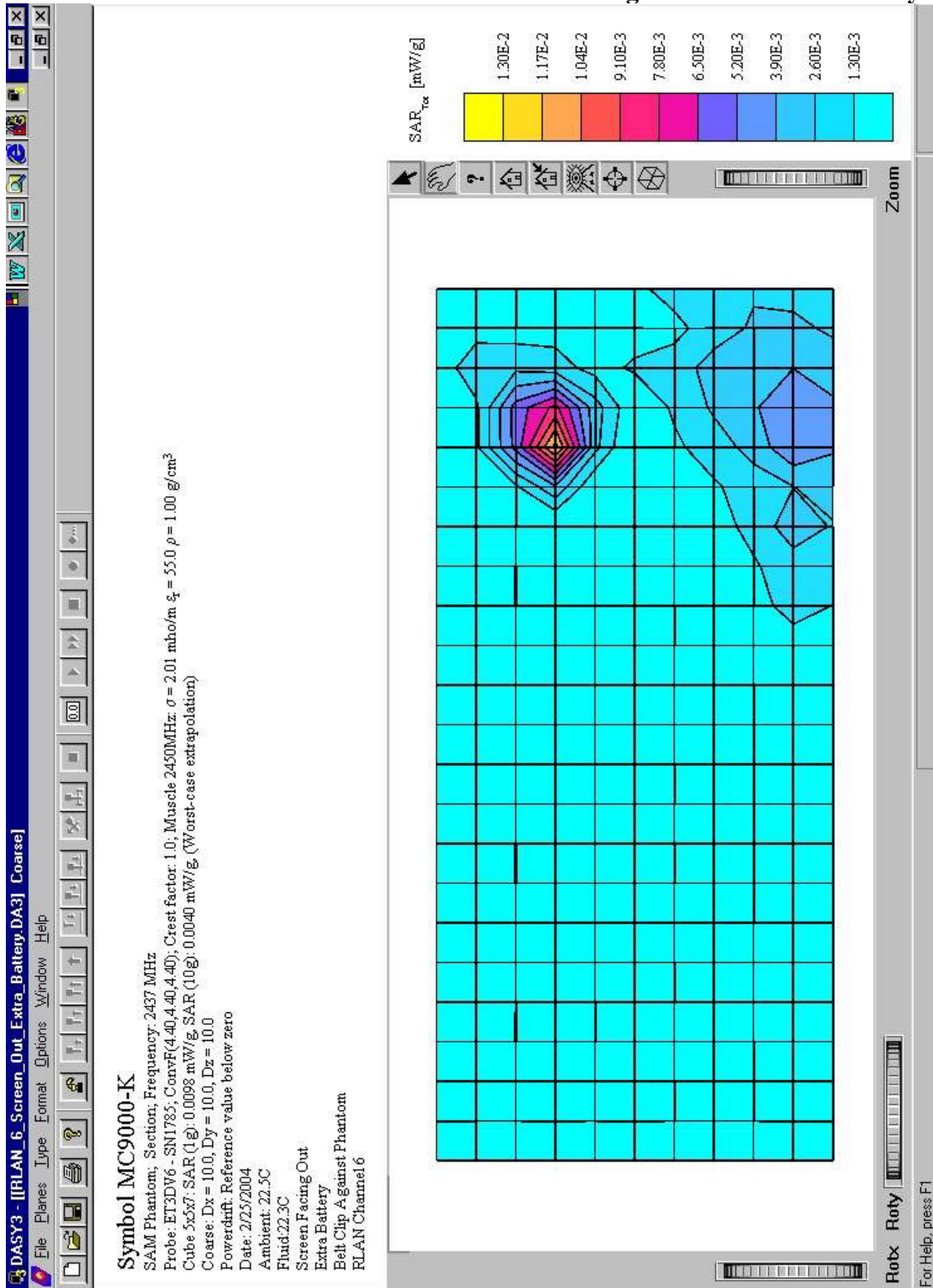
Symbol Technologies, Model No: MC9063  
 FCC ID: H9PMC9063B

**Exhibit 16: RLAN Channel 6 Screen Facing Out**



Symbol Technologies, Model No: MC9063  
 FCC ID: H9PMC9063B

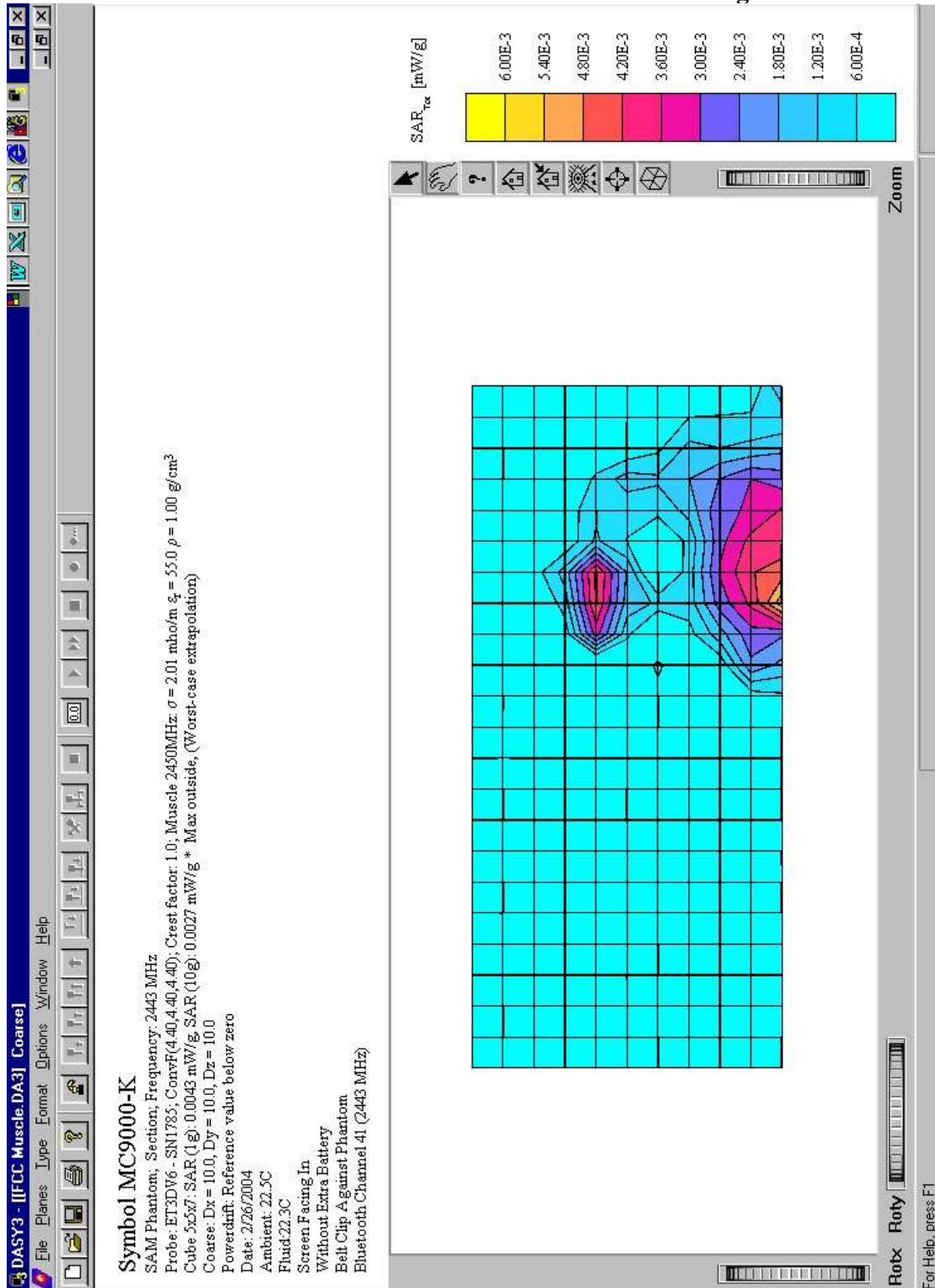
**Exhibit 17: RLAN Channel 6 Screen Facing Out With Extra Battery**



Symbol Technologies, Model No: MC9063  
 FCC ID: H9PMC9063B

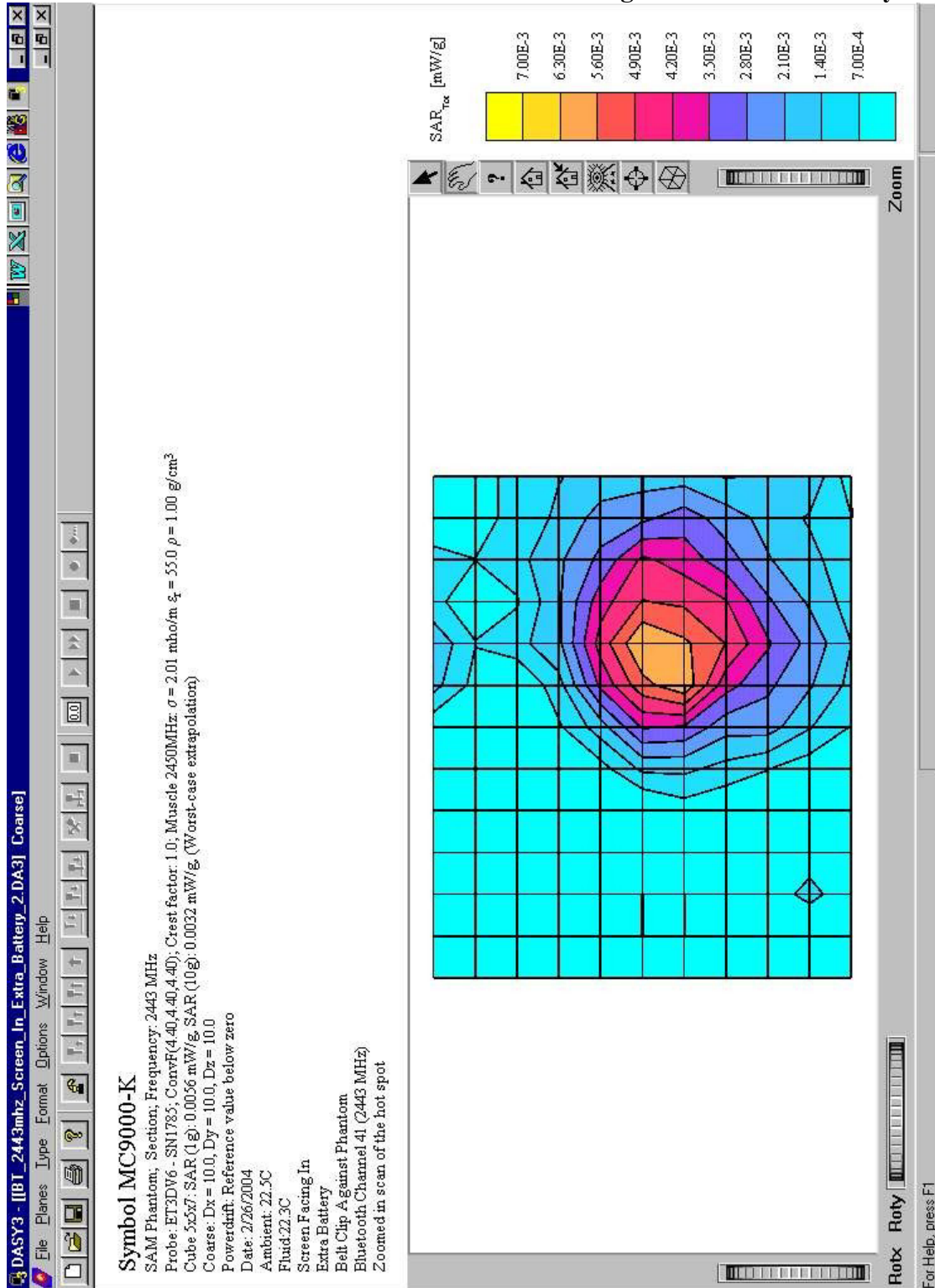
**SAR PLOTS FOR BLUETOOTH BANDS**

**Exhibit 18: Bluetooth Channel 2443 Screen Facing In**



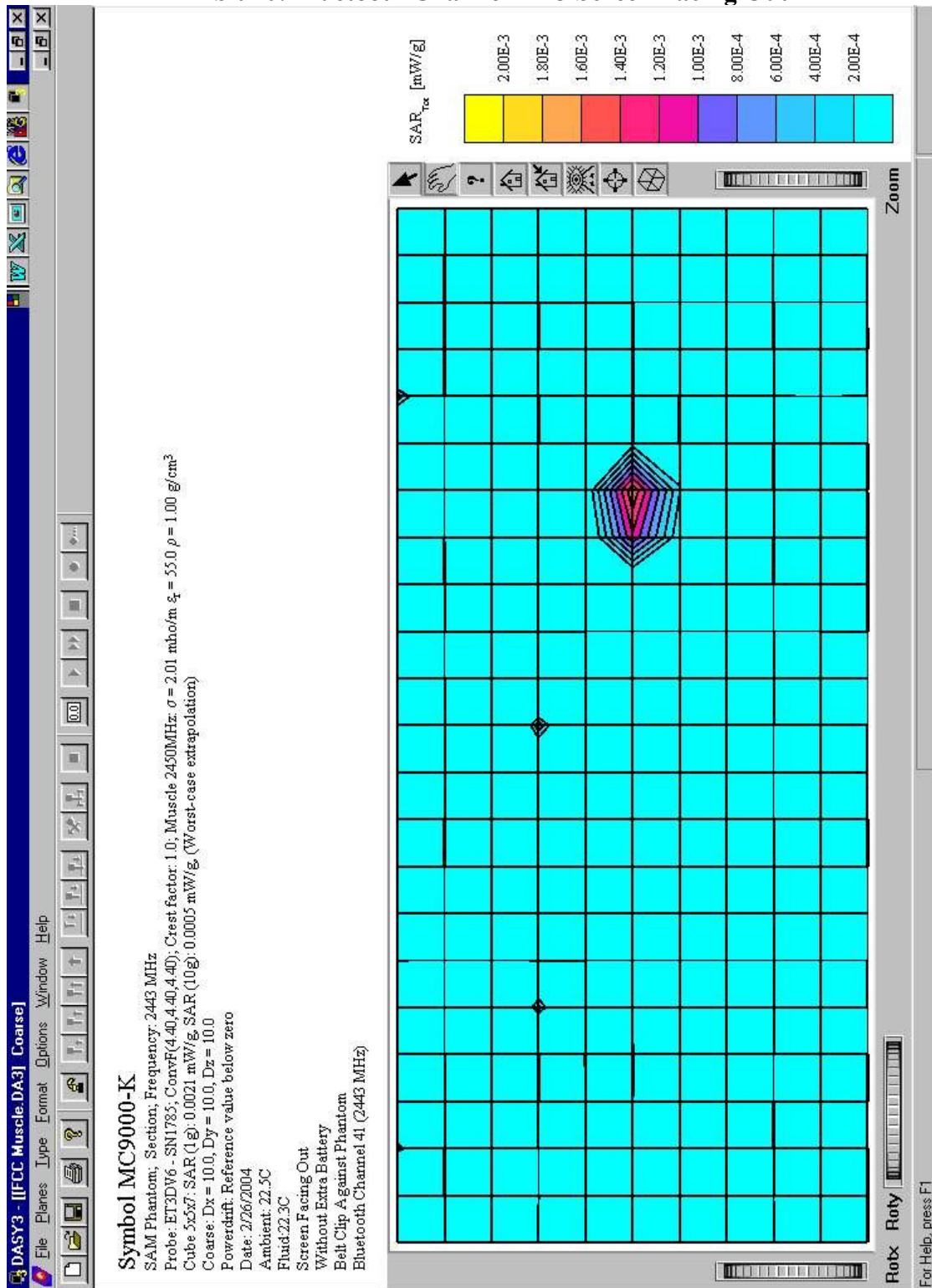
Symbol Technologies, Model No: MC9063  
 FCC ID: H9PMC9063B

**Exhibit 19: Bluetooth Channel 2443 Screen Facing In With Extra Battery**



Symbol Technologies, Model No: MC9063  
 FCC ID: H9PMC9063B

**Exhibit 20: Bluetooth Channel 2443 Screen Facing Out**



Symbol Technologies, Model No: MC9063  
 FCC ID: H9PMC9063B

**Exhibit 21: Bluetooth Channel 2443 Screen Facing Out With Extra Battery**

