

Symbol Technologies, Model No: MC9063

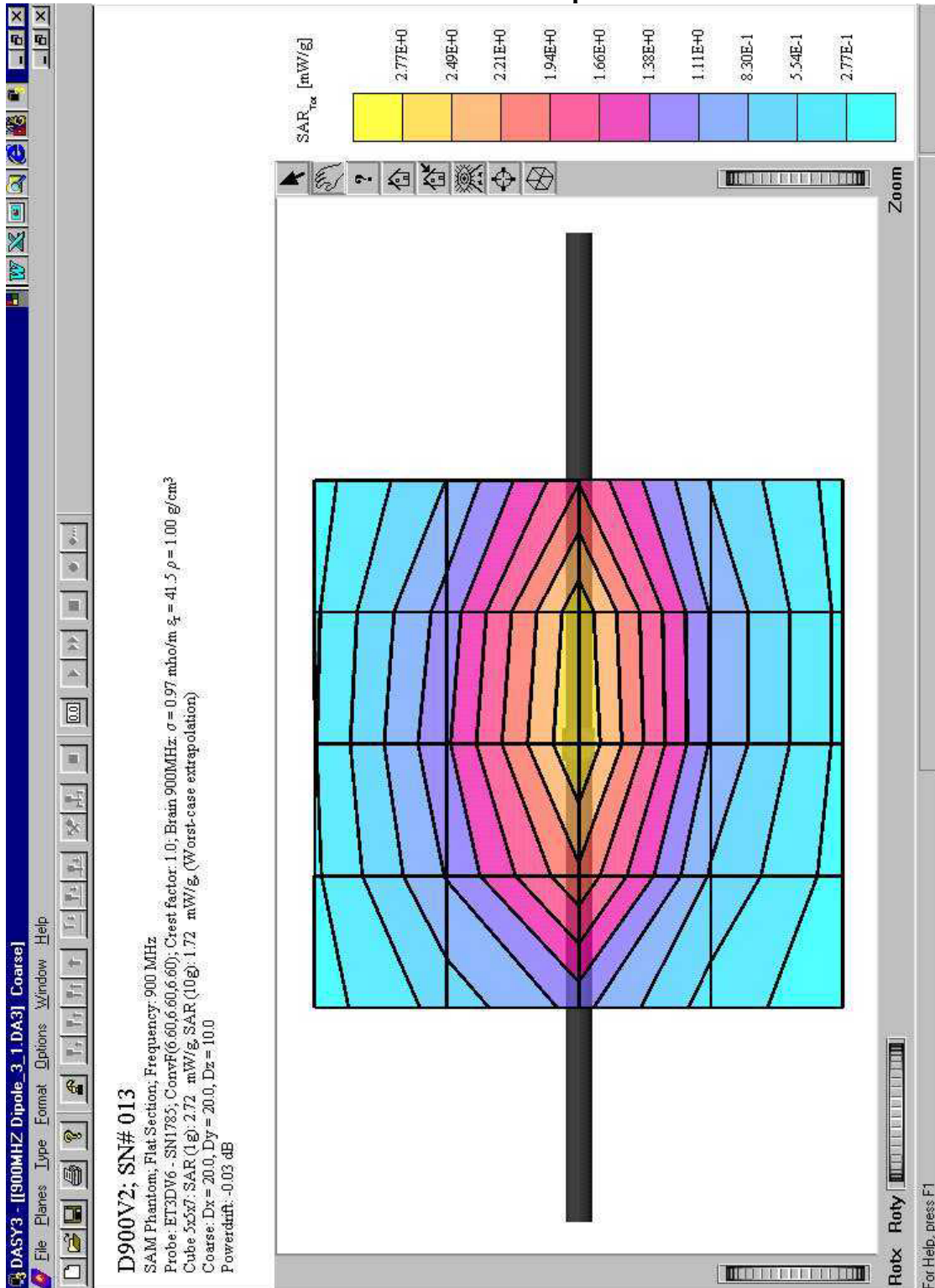
## **1.0 GRAPHICAL TEST RESULTS**

Please note that the graphical visualization of the device position onto the SAR distribution gives only limited information on the current distribution of the device, since the curvature of the head results in graphical distortion. Full information can only be obtained either by H-field scans in free space or SAR evaluation with a flat phantom.

Symbol Technologies, Model No: MC9063

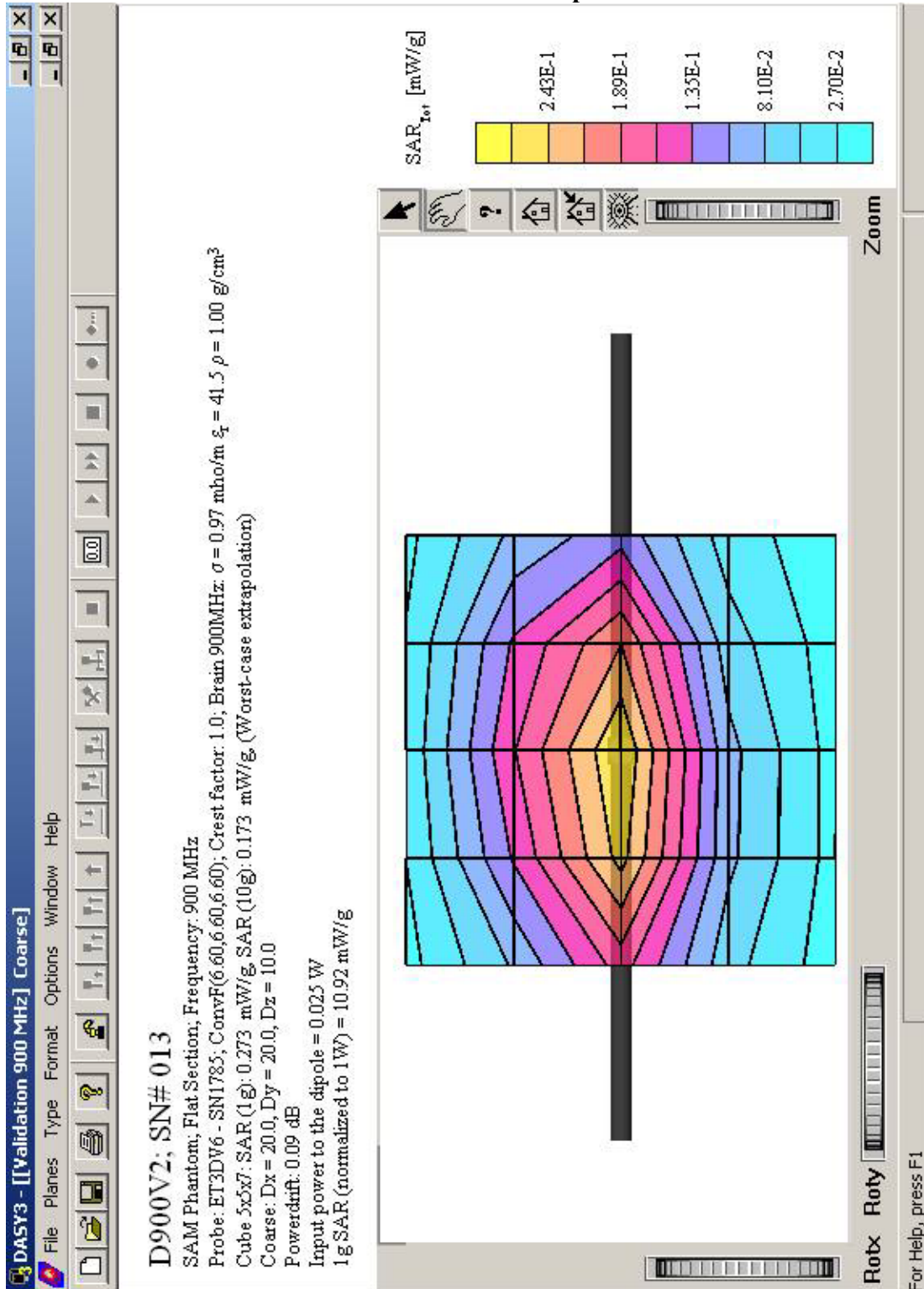
**SAR PLOTS FOR SYSTEM VERIFICATION**

**Exhibit 1: 900 MHz Dipole Validation**



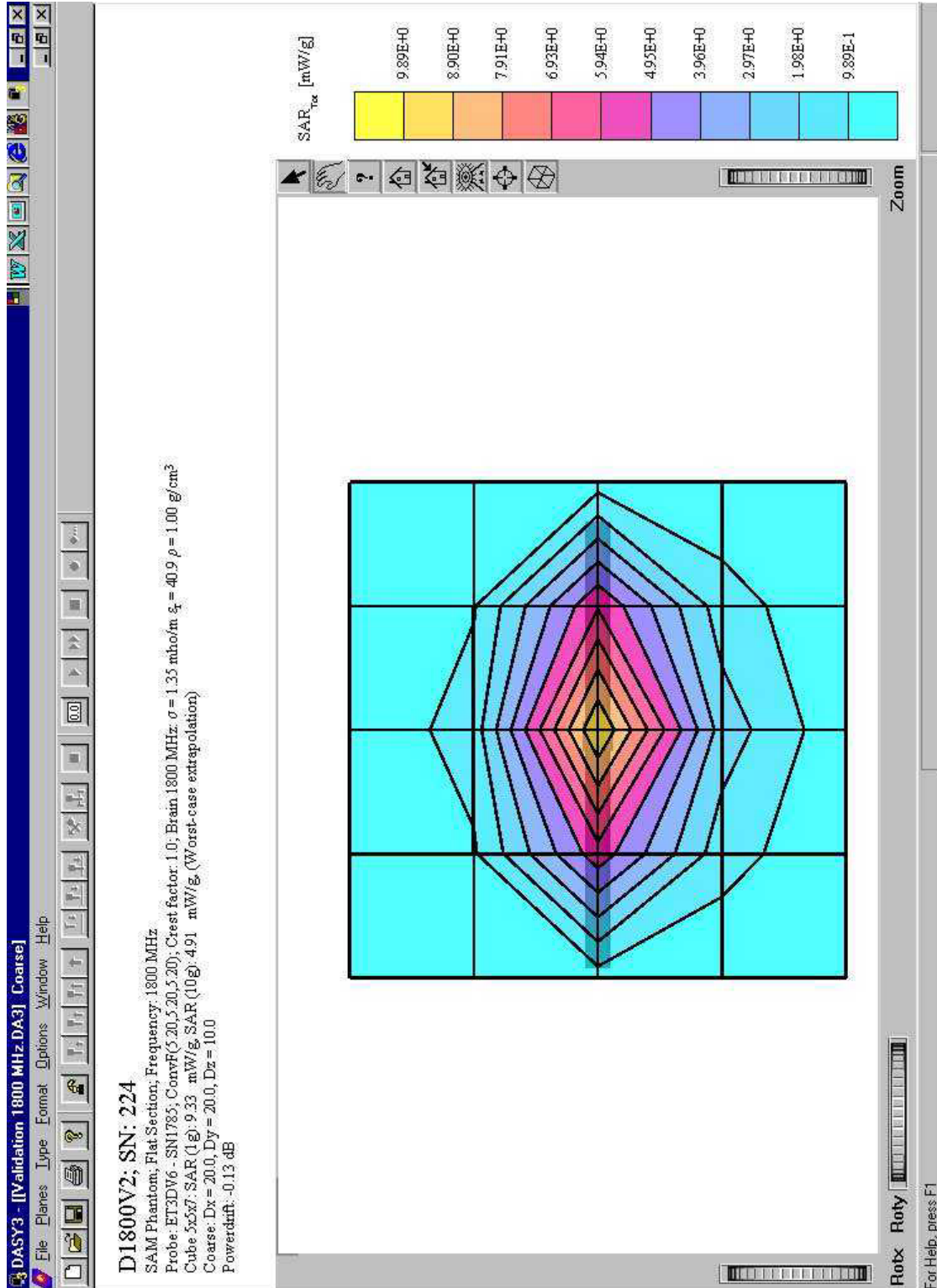
Symbol Technologies, Model No: MC9063

**Exhibit 2: 900 MHz Dipole Validation**



Symbol Technologies, Model No: MC9063

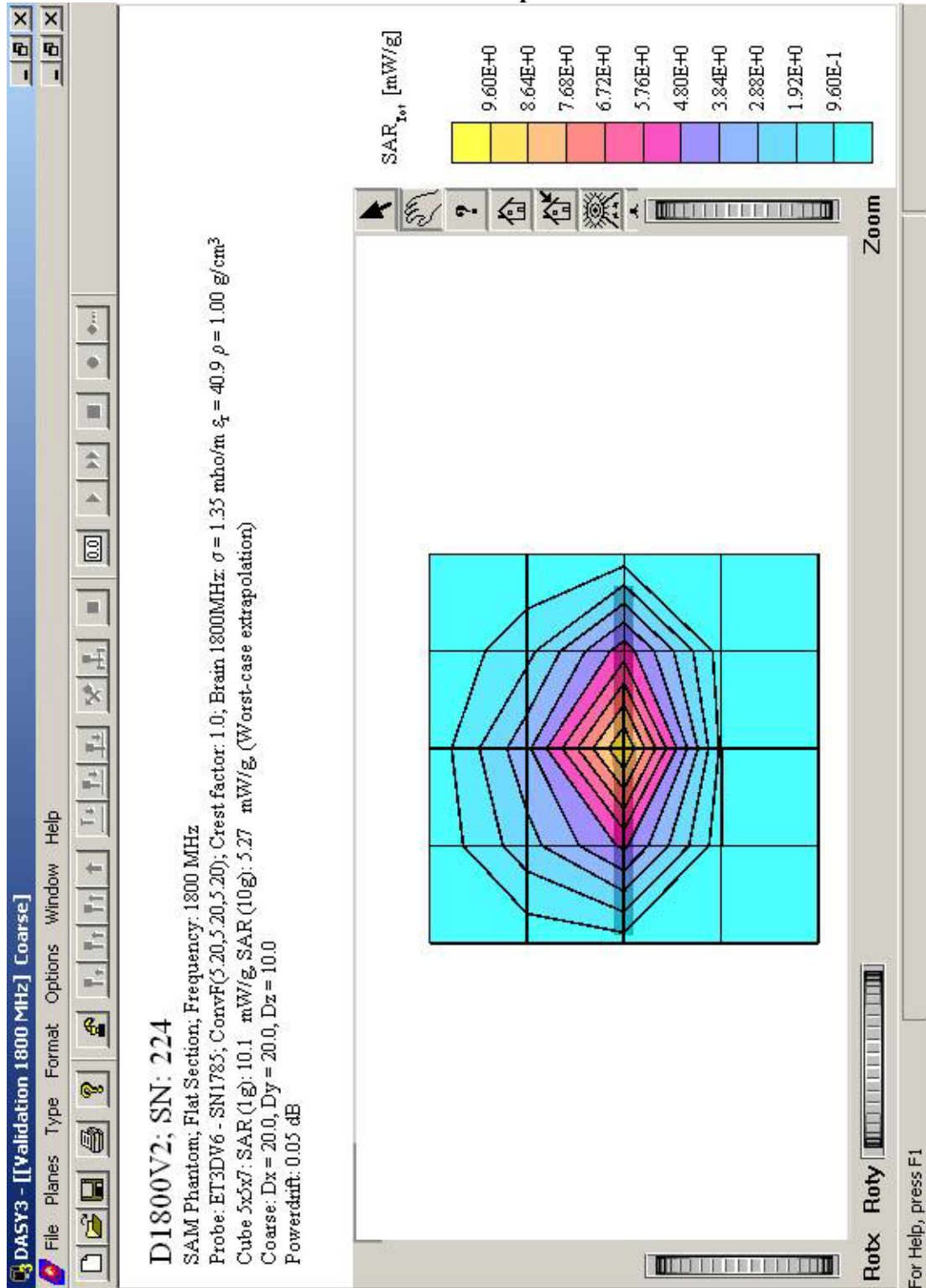
**Exhibit 3: 1800 MHz Dipole Validation**





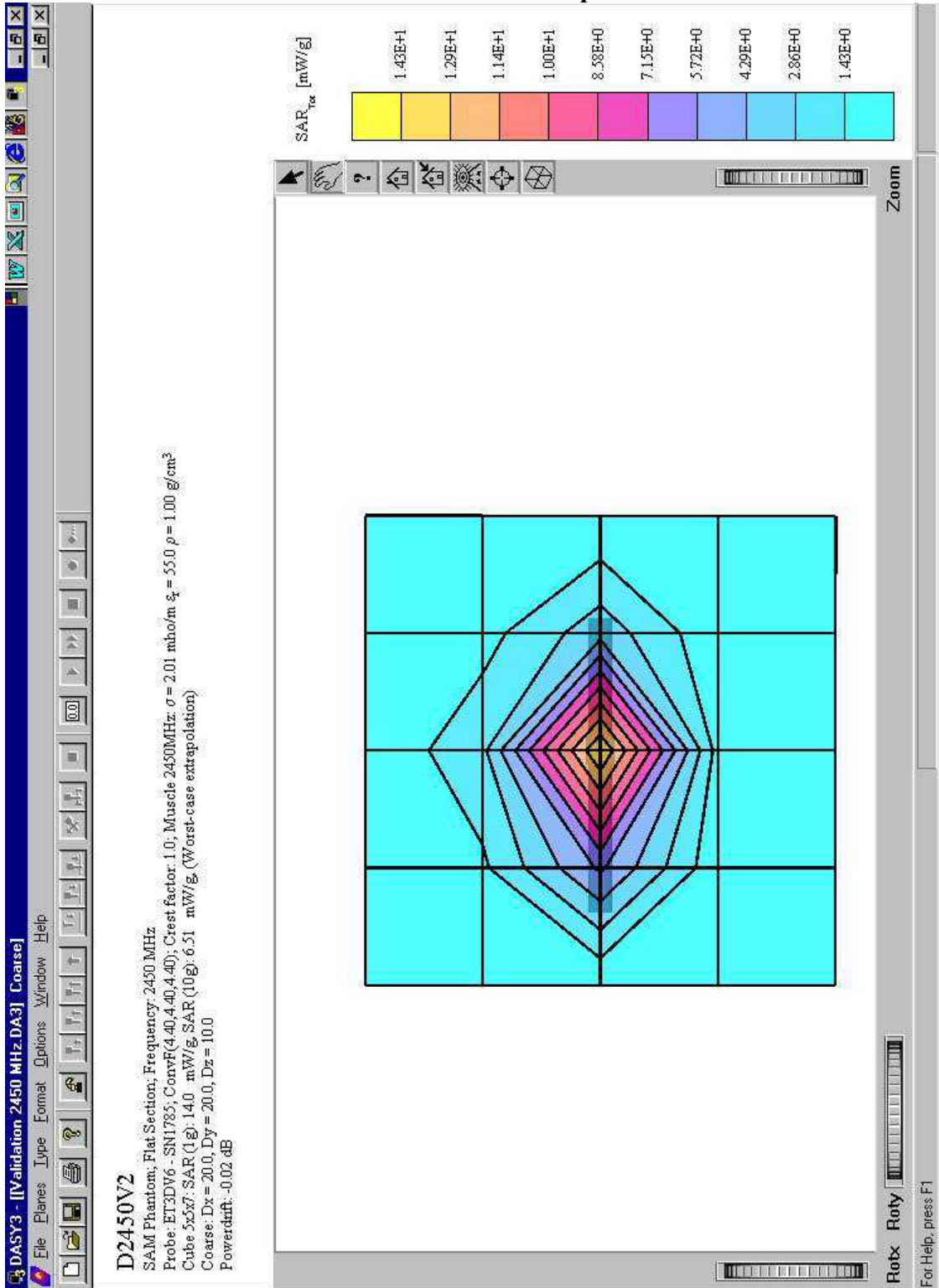
Symbol Technologies, Model No: MC9063

**Exhibit 4: 1800 MHz Dipole Validation**



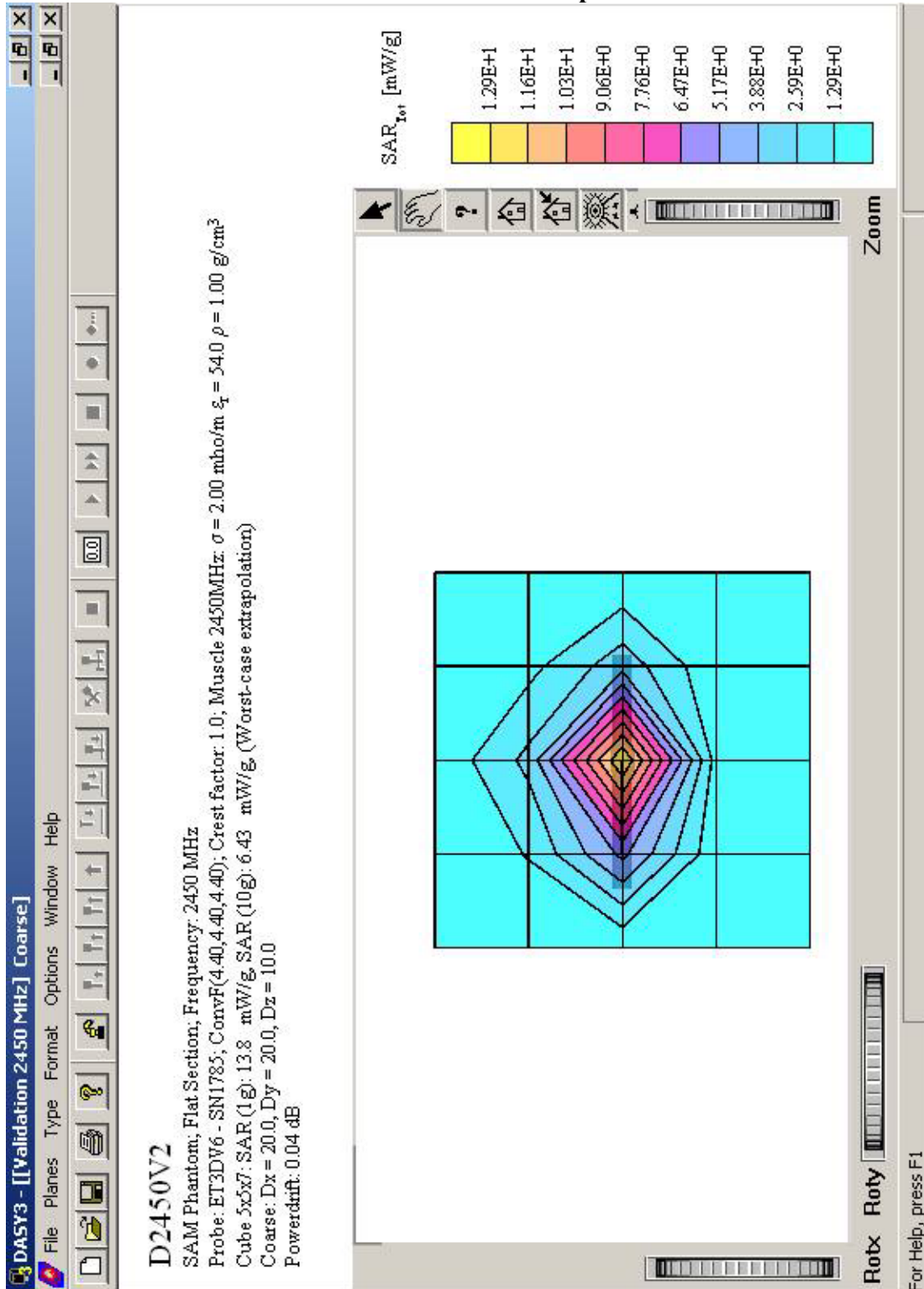
Symbol Technologies, Model No: MC9063

**Exhibit 5: 2450 MHz Dipole Validation**



Symbol Technologies, Model No: MC9063

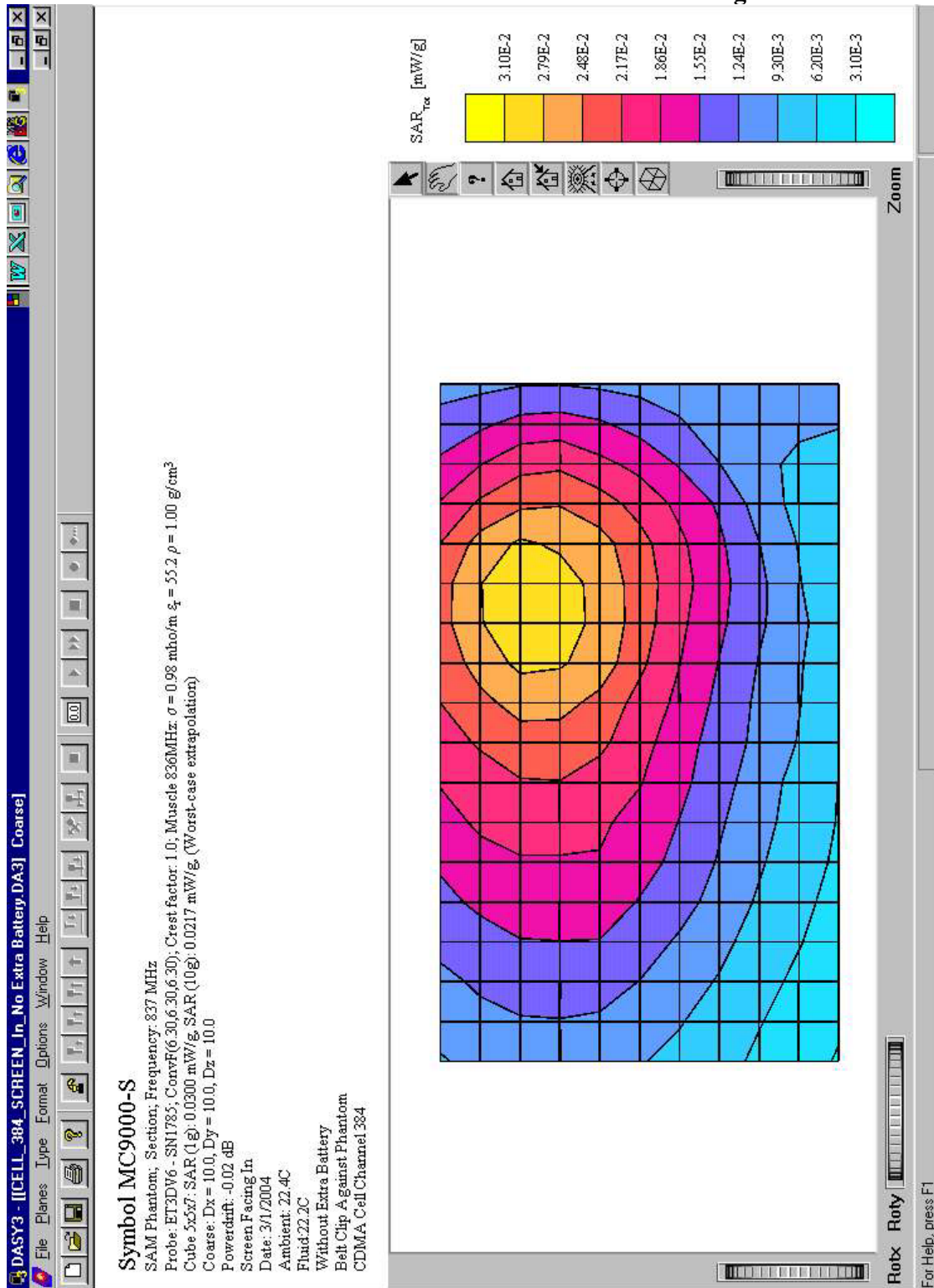
**Exhibit 6: 2450 MHz Dipole Validation**



Symbol Technologies, Model No: MC9063

**SAR PLOTS FOR CDMA CELL AND PCS BANDS**

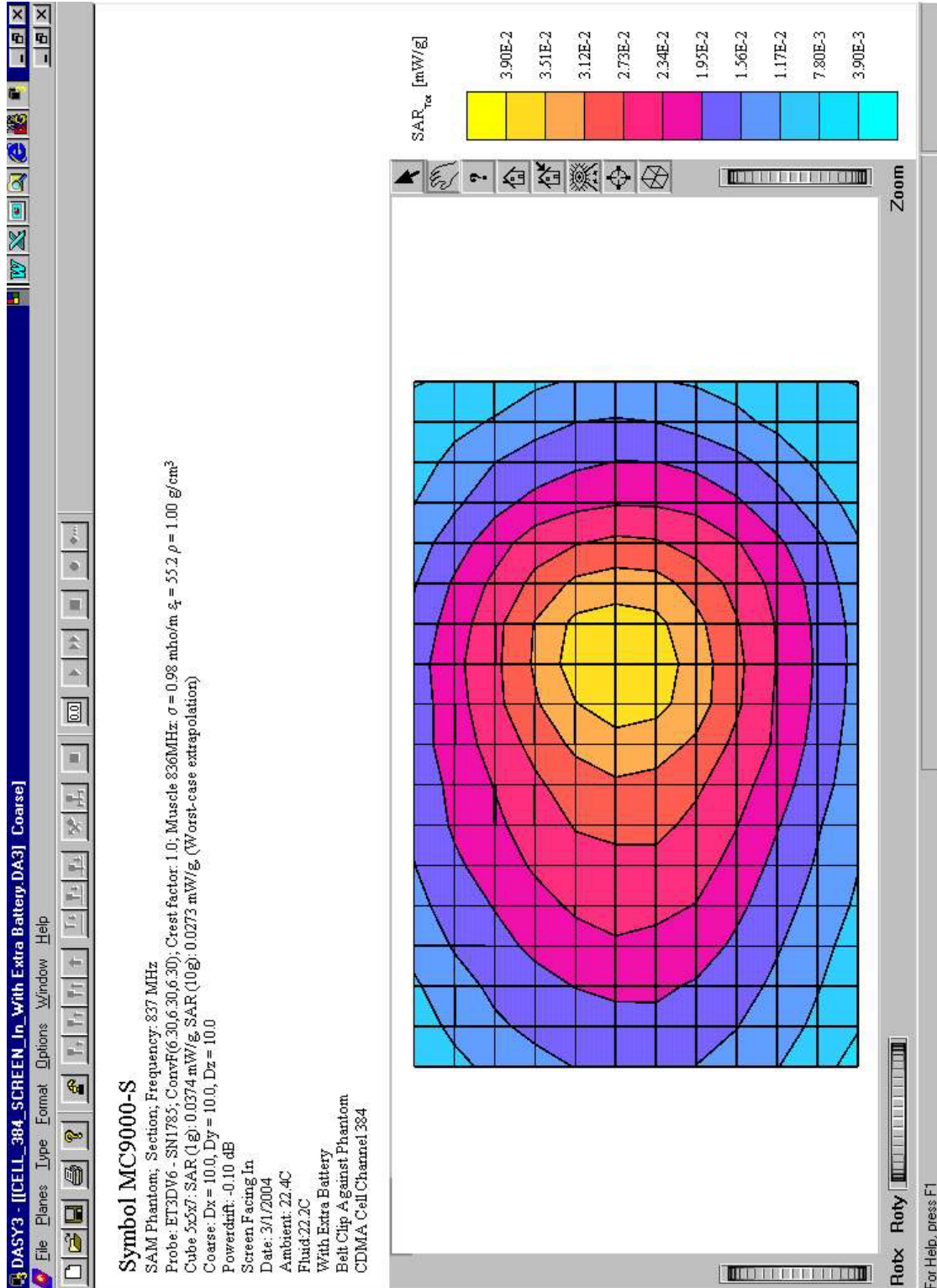
**Exhibit 7: CDMA Cell Channel 384 Screen Facing In**





Symbol Technologies, Model No: MC9063

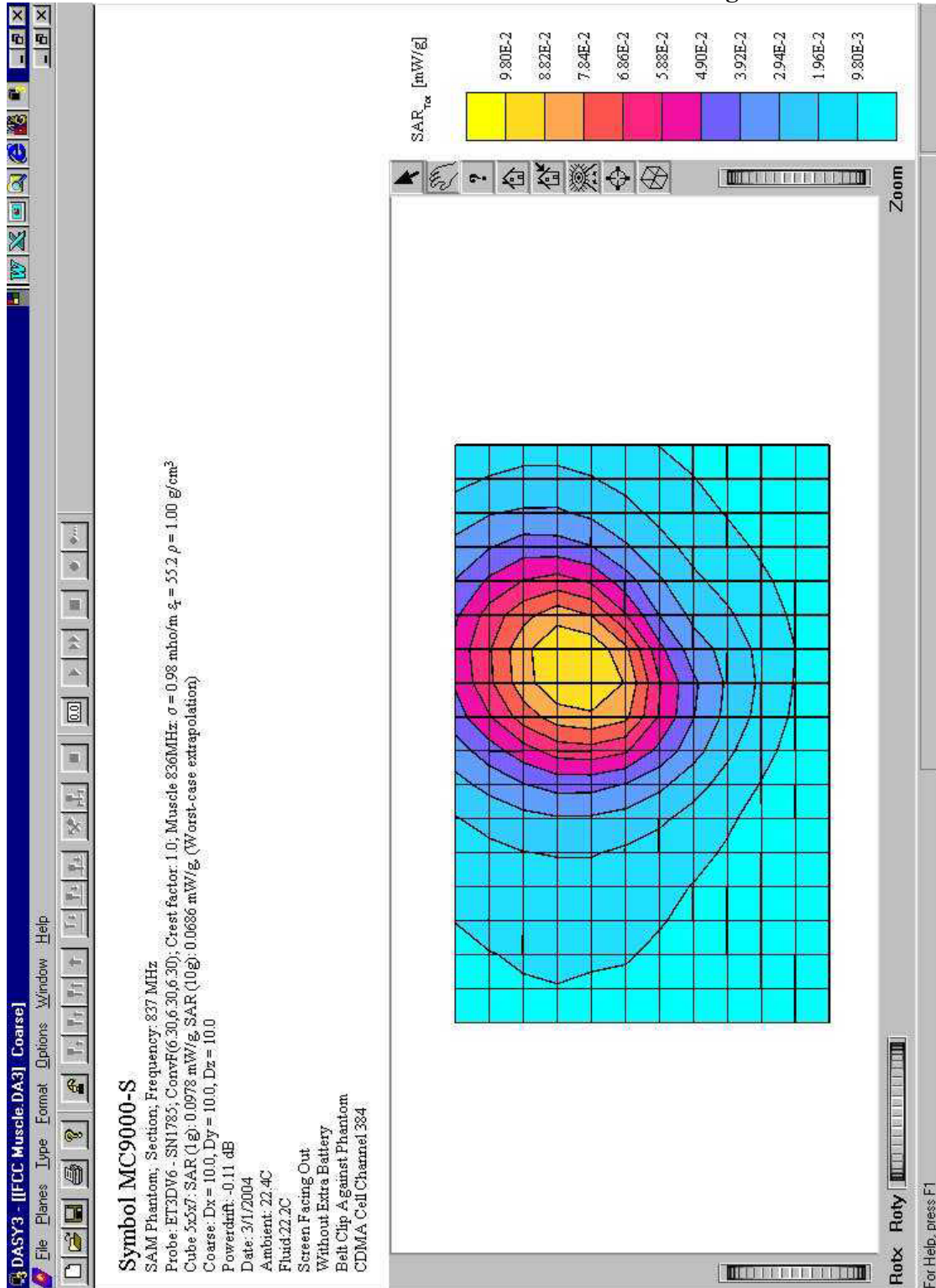
**Exhibit 8: CDMA Cell Channel 384 Screen Facing In With Extra Battery**





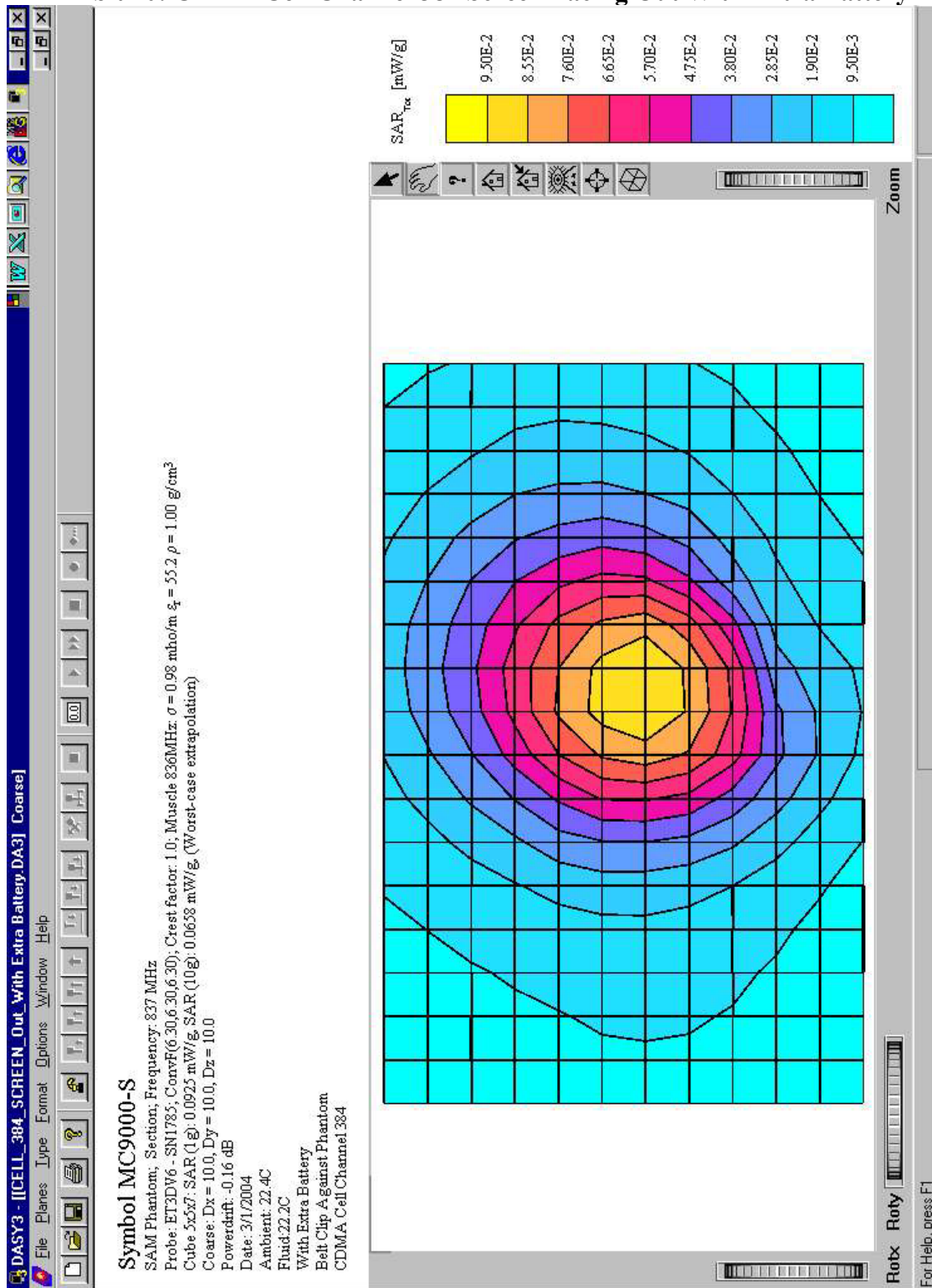
Symbol Technologies, Model No: MC9063

**Exhibit 9: CDMA Cell Channel 384 Screen Facing Out**



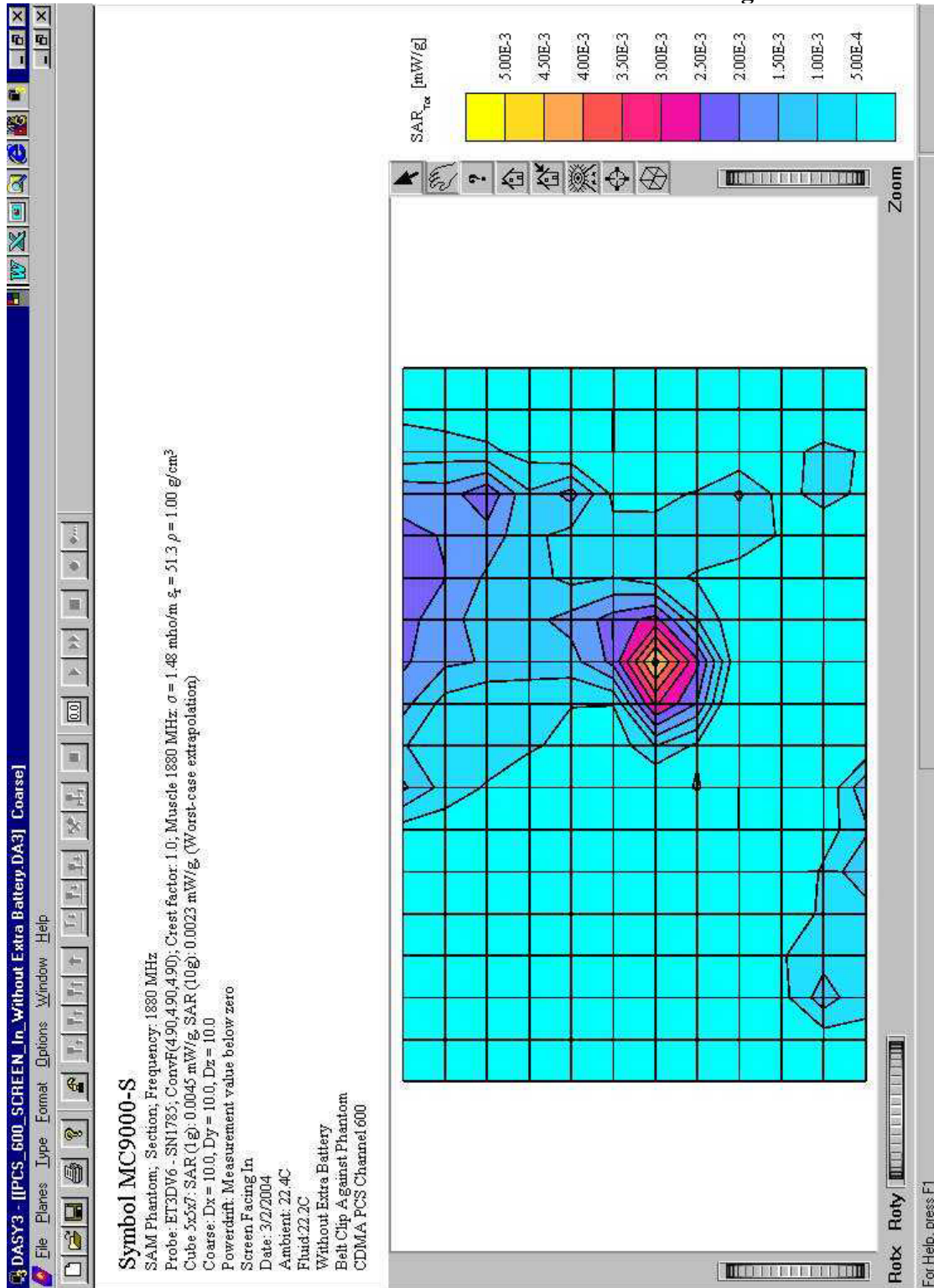
Symbol Technologies, Model No: MC9063

**Exhibit 10: CDMA Cell Channel 384 Screen Facing Out With Extra Battery**



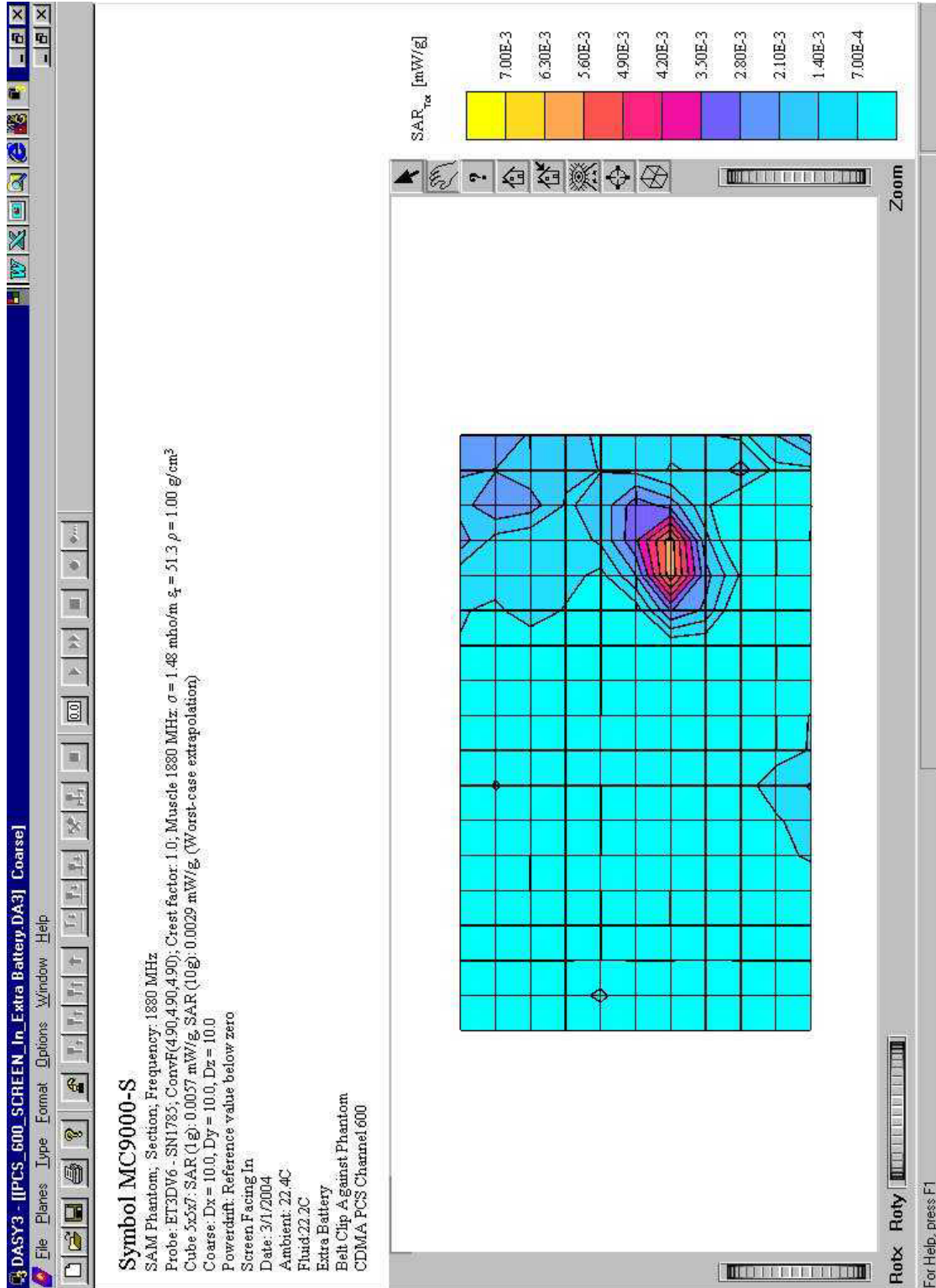
Symbol Technologies, Model No: MC9063

**Exhibit 11: CDMA Cell Channel 600 Screen Facing In**



Symbol Technologies, Model No: MC9063

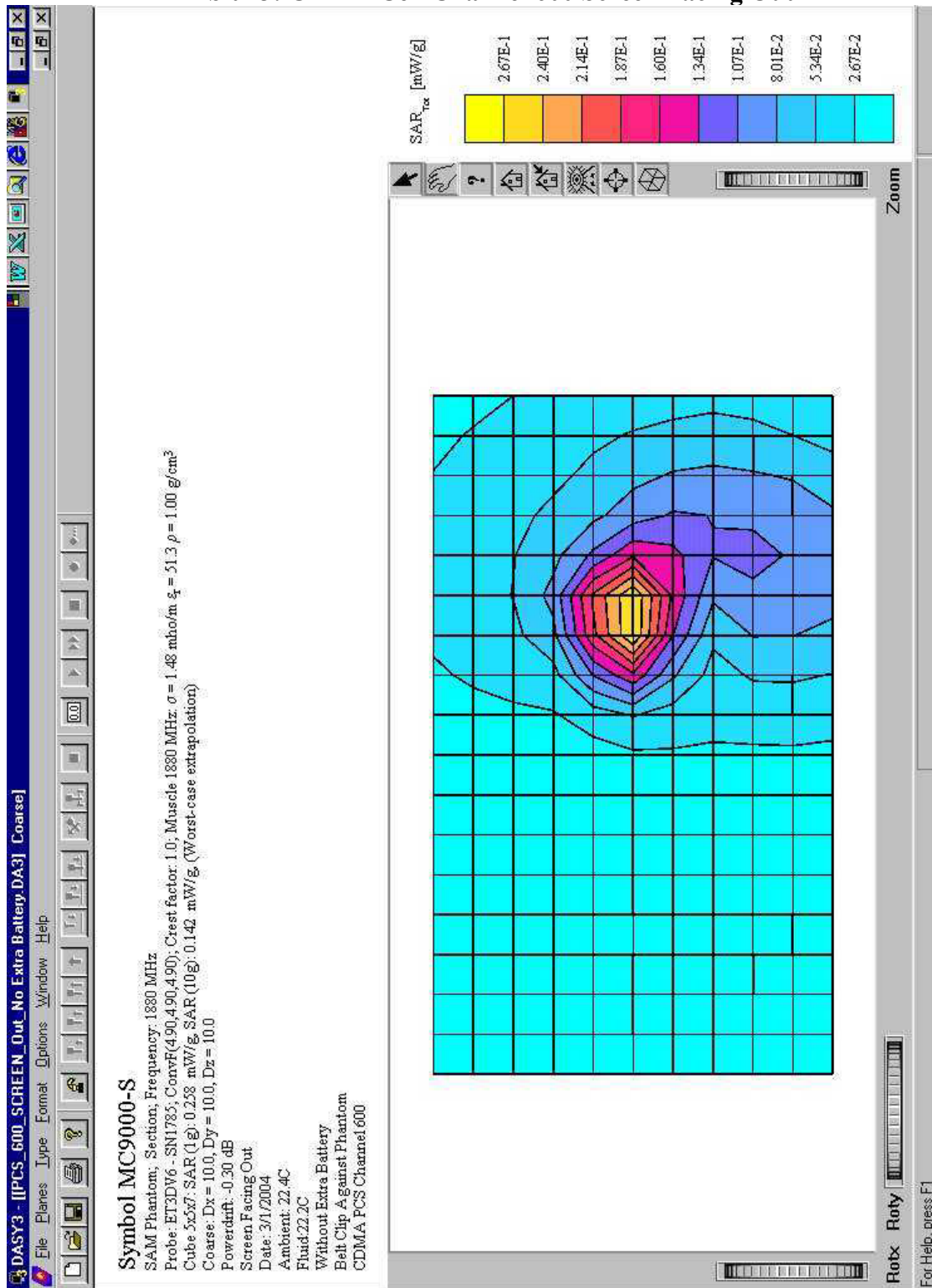
**Exhibit 12: CDMA Cell Channel 600 Screen Facing In With Extra Battery**





Symbol Technologies, Model No: MC9063

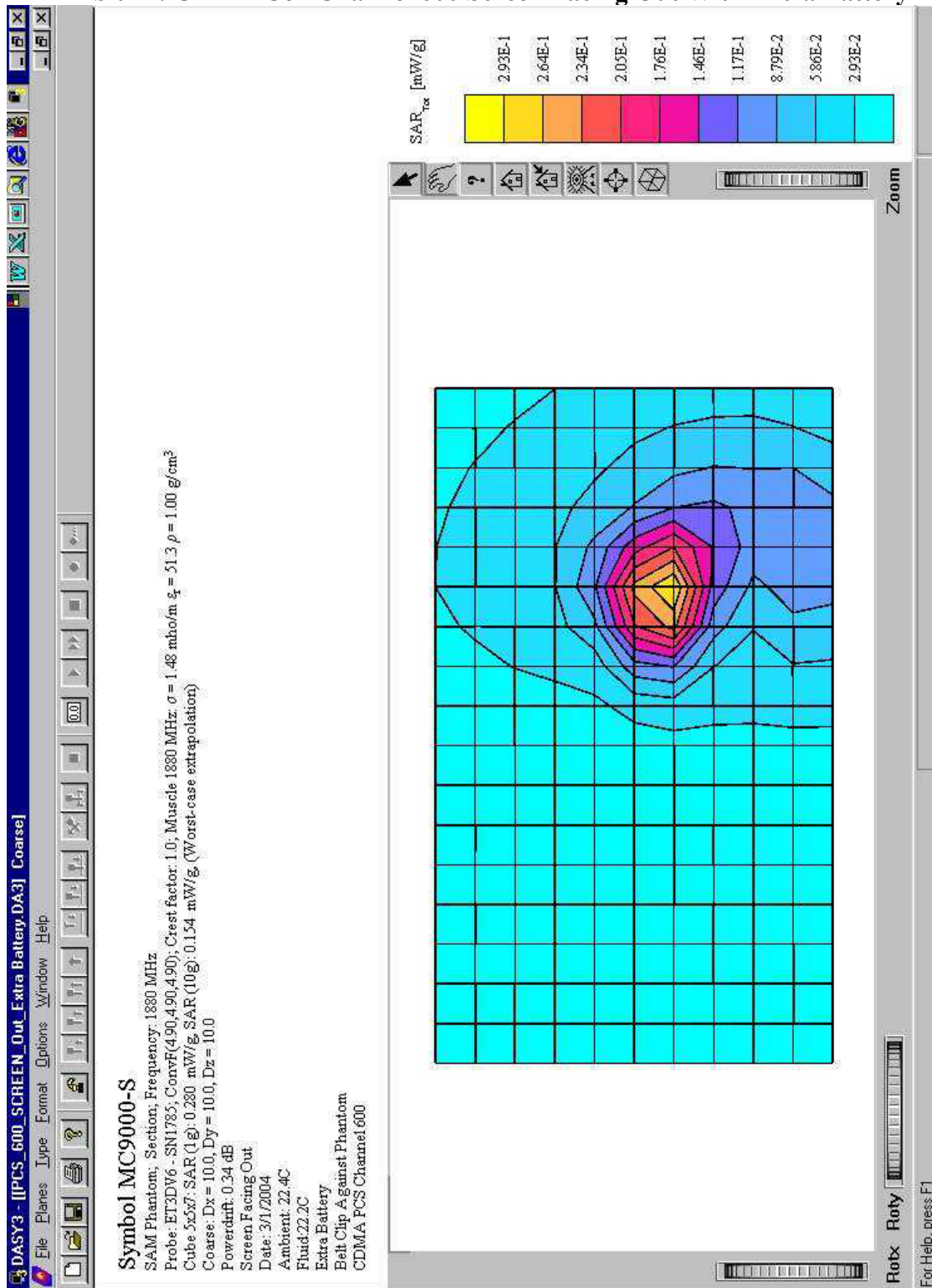
**Exhibit 13: CDMA Cell Channel 600 Screen Facing Out**





Symbol Technologies, Model No: MC9063

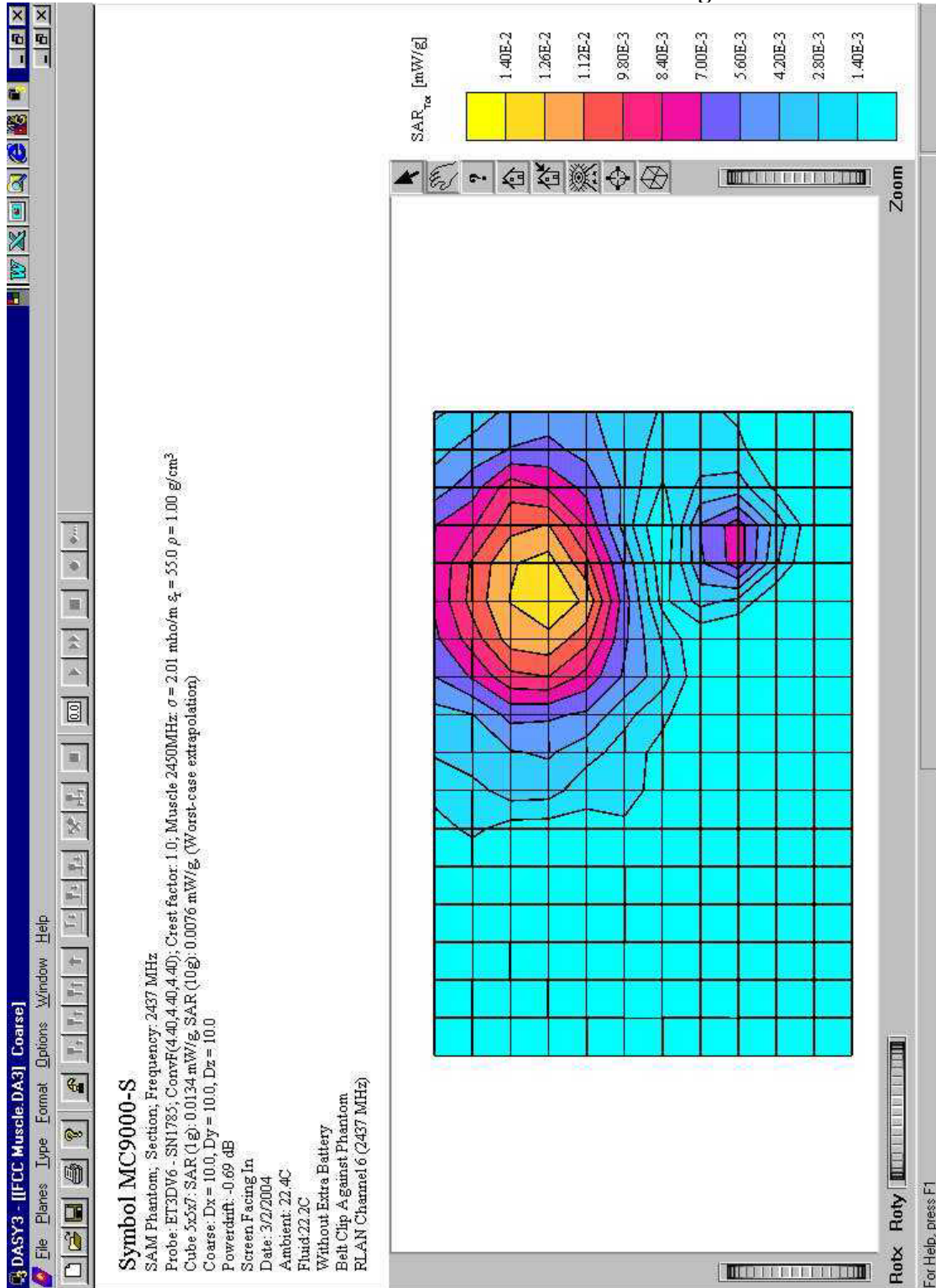
**Exhibit 14: CDMA Cell Channel 600 Screen Facing Out With Extra Battery**



Symbol Technologies, Model No: MC9063

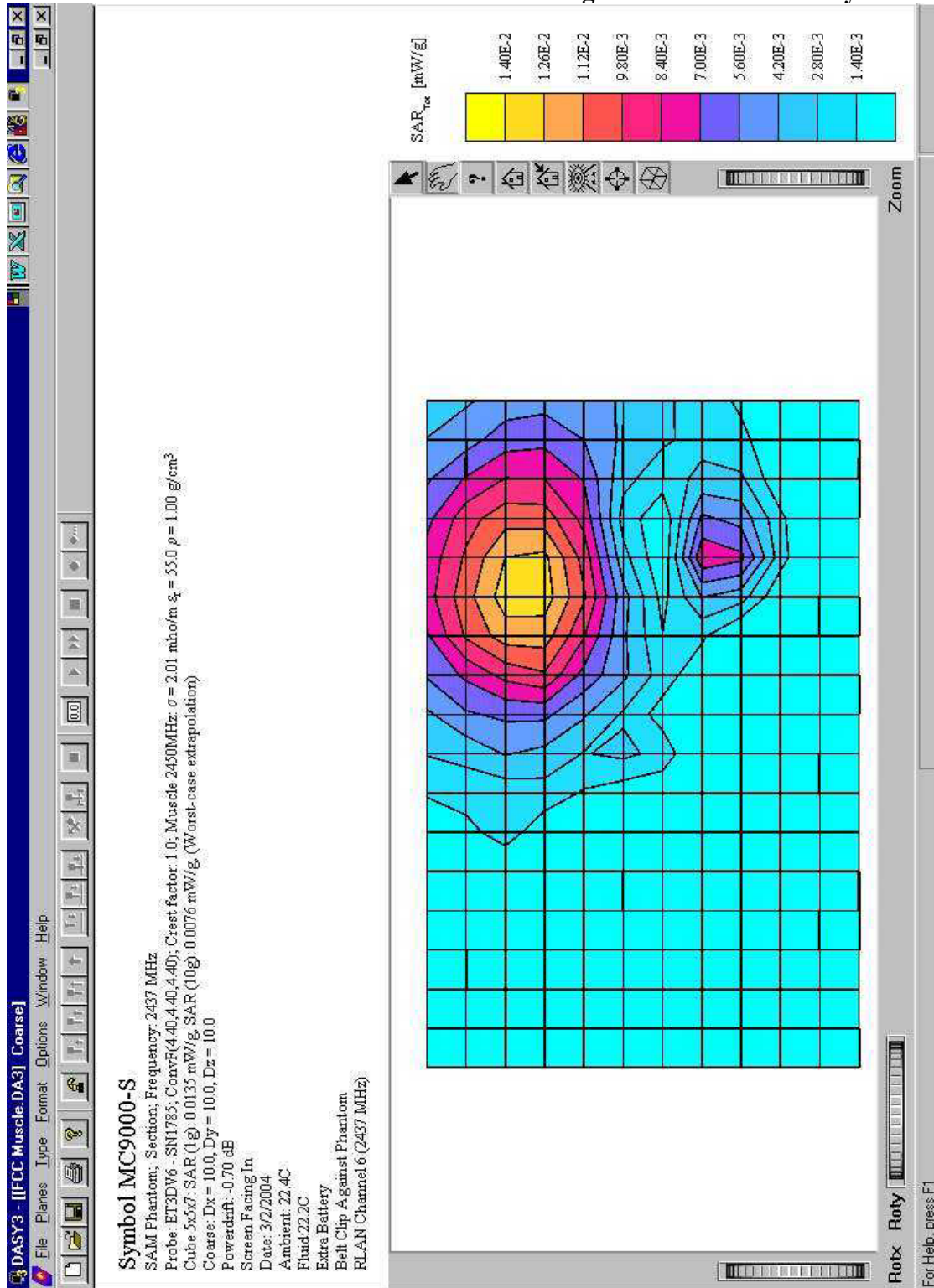
**SAR PLOTS FOR RLAN BANDS**

**Exhibit 15: RLAN Channel 6 Screen Facing In**



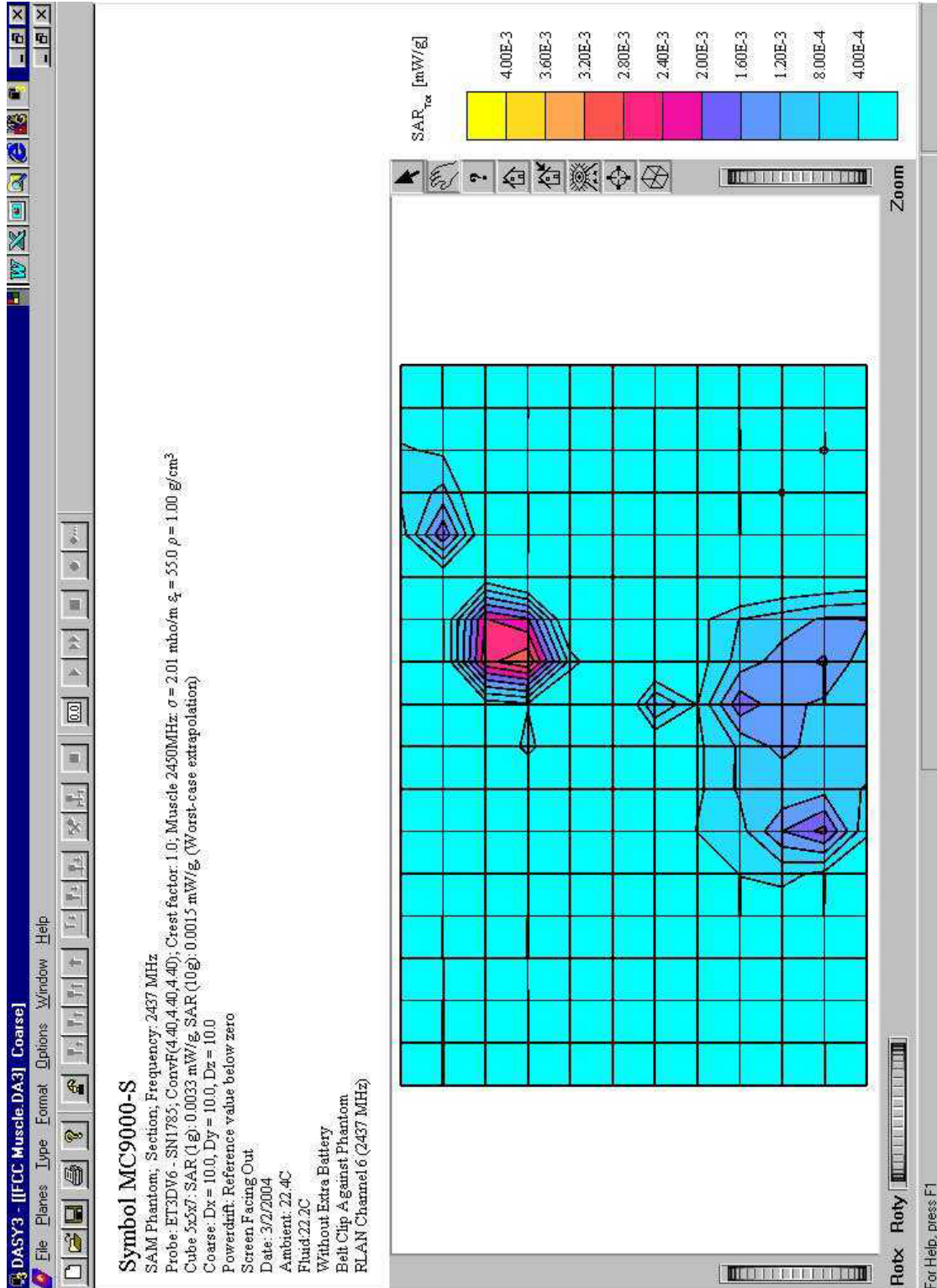
Symbol Technologies, Model No: MC9063

**Exhibit 16: RLAN Channel 6 Screen Facing In With Extra Battery**



Symbol Technologies, Model No: MC9063

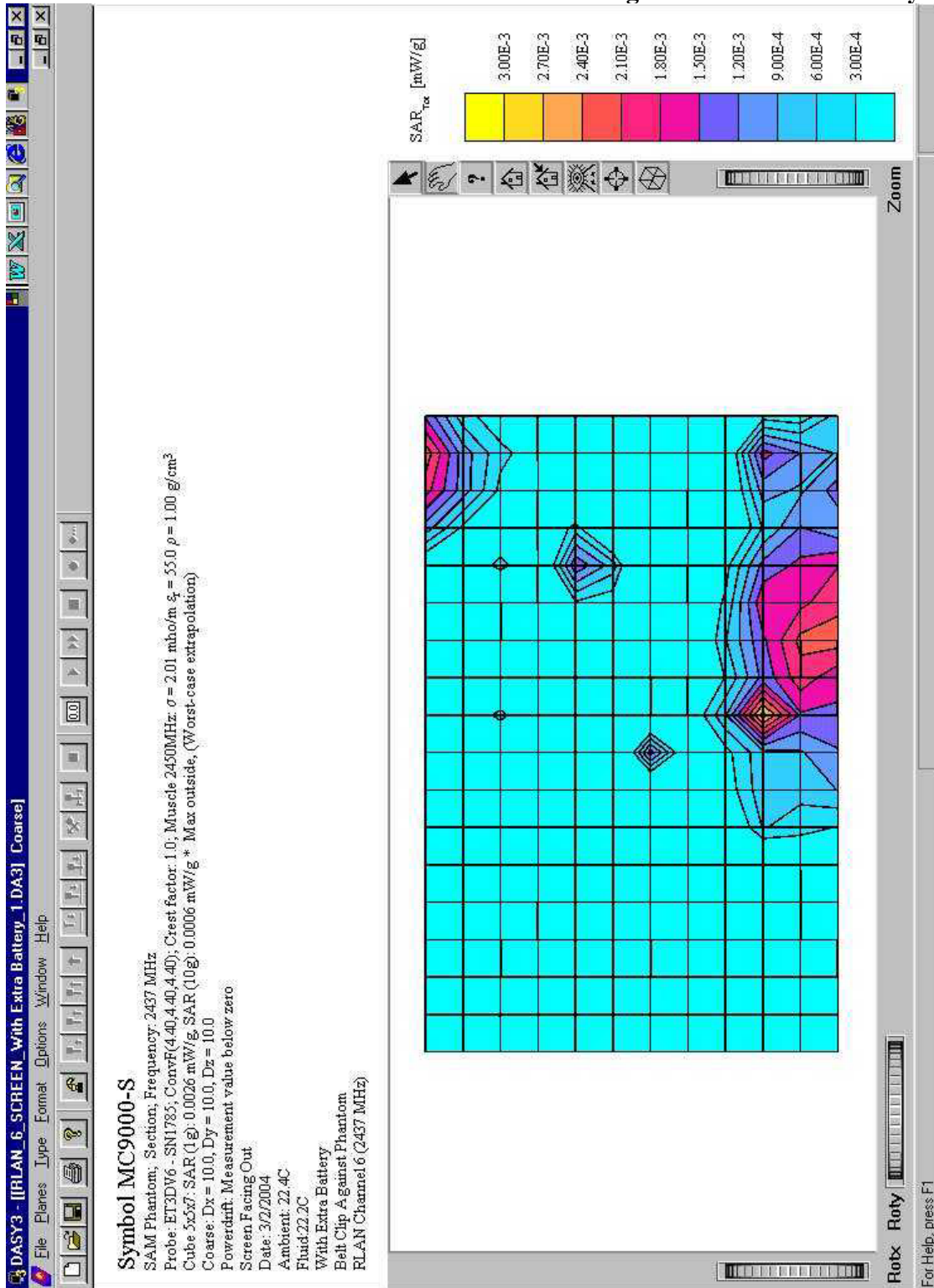
**Exhibit 17: RLAN Channel 6 Screen Facing Out**





Symbol Technologies, Model No: MC9063

**Exhibit 18: RLAN Channel 6 Screen Facing Out With Extra Battery**

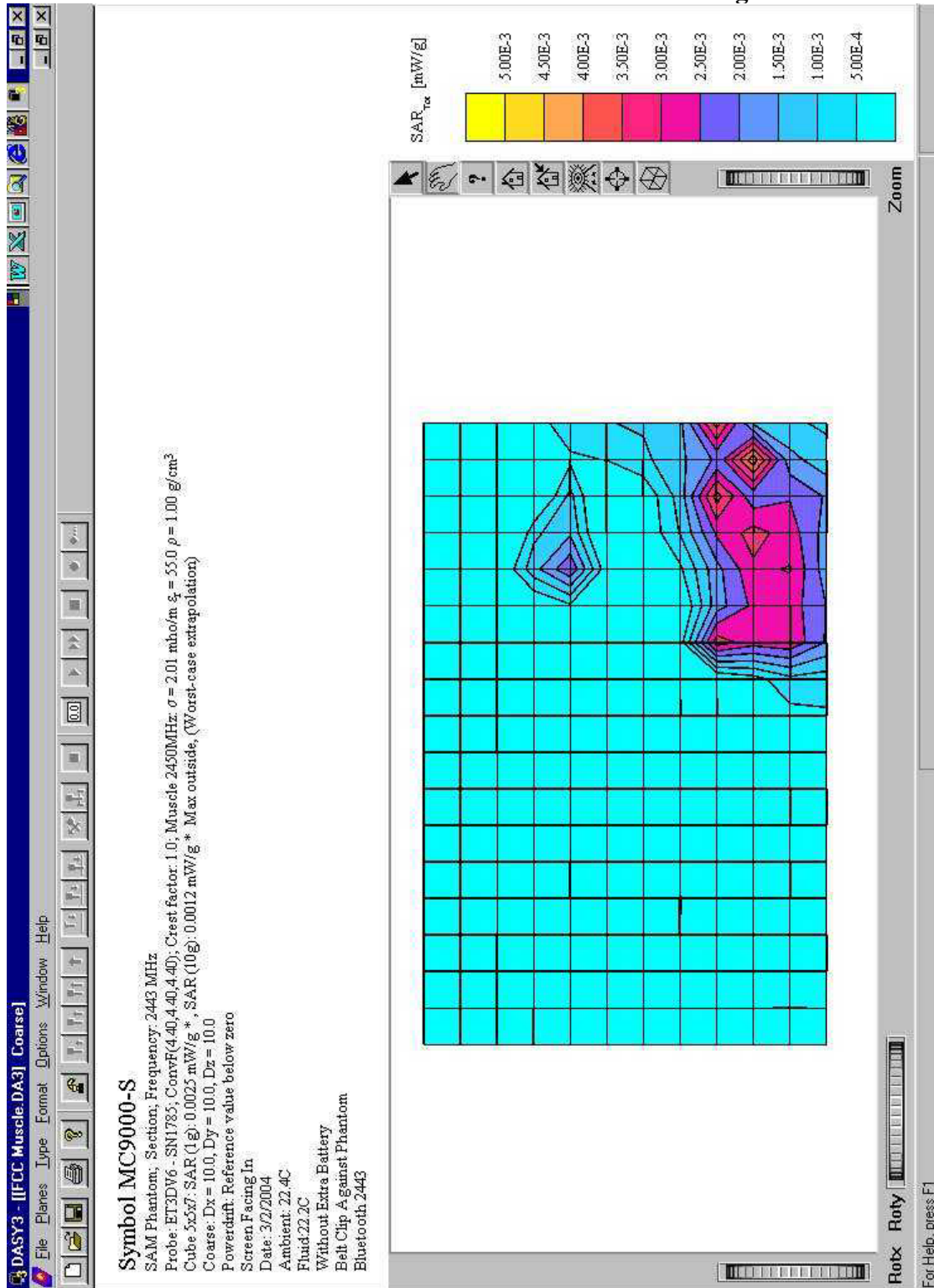




Symbol Technologies, Model No: MC9063

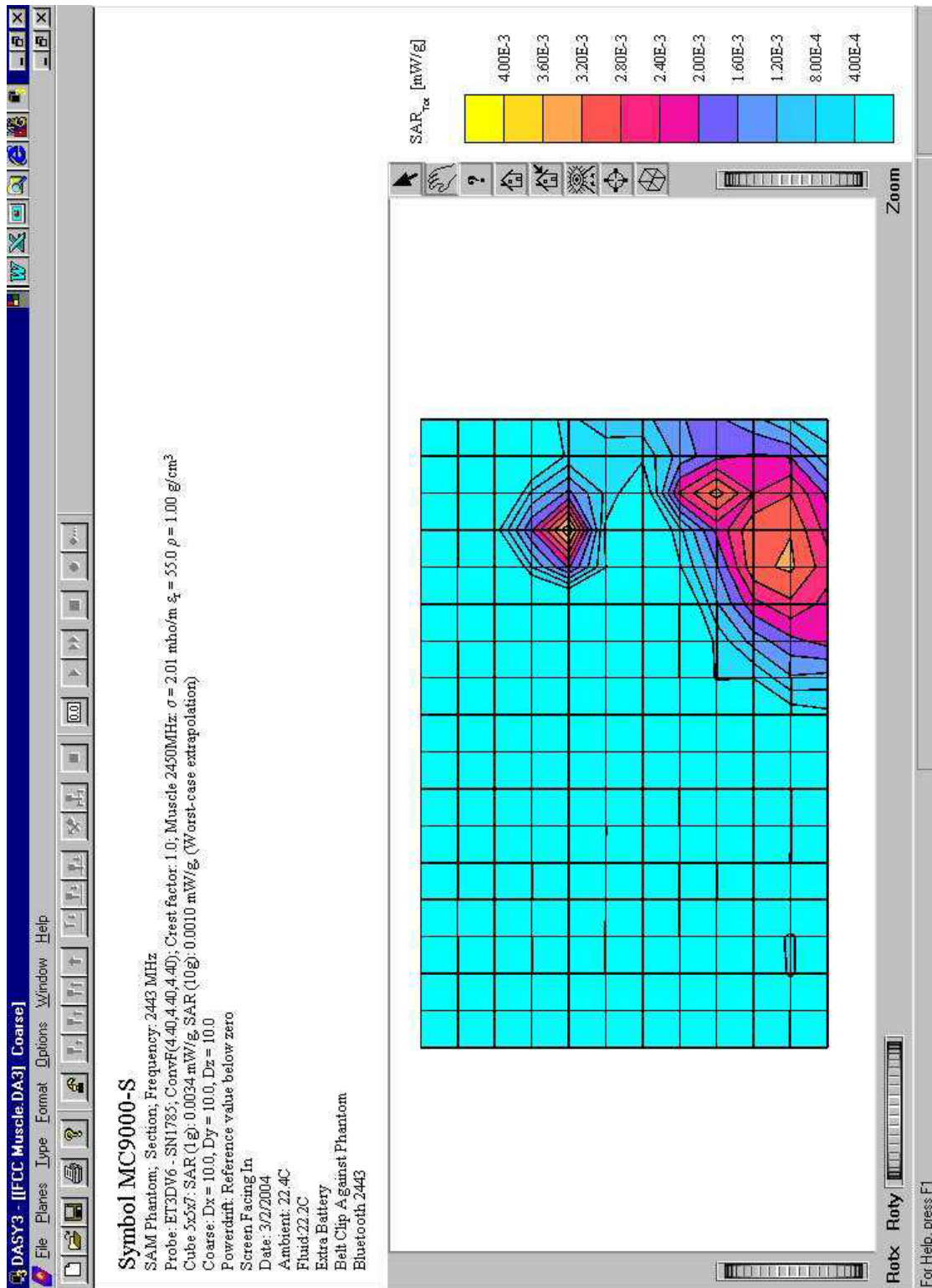
**SAR PLOTS FOR BLUETOOTH BANDS**

**Exhibit 19: Bluetooth Channel 2443 Screen Facing In**



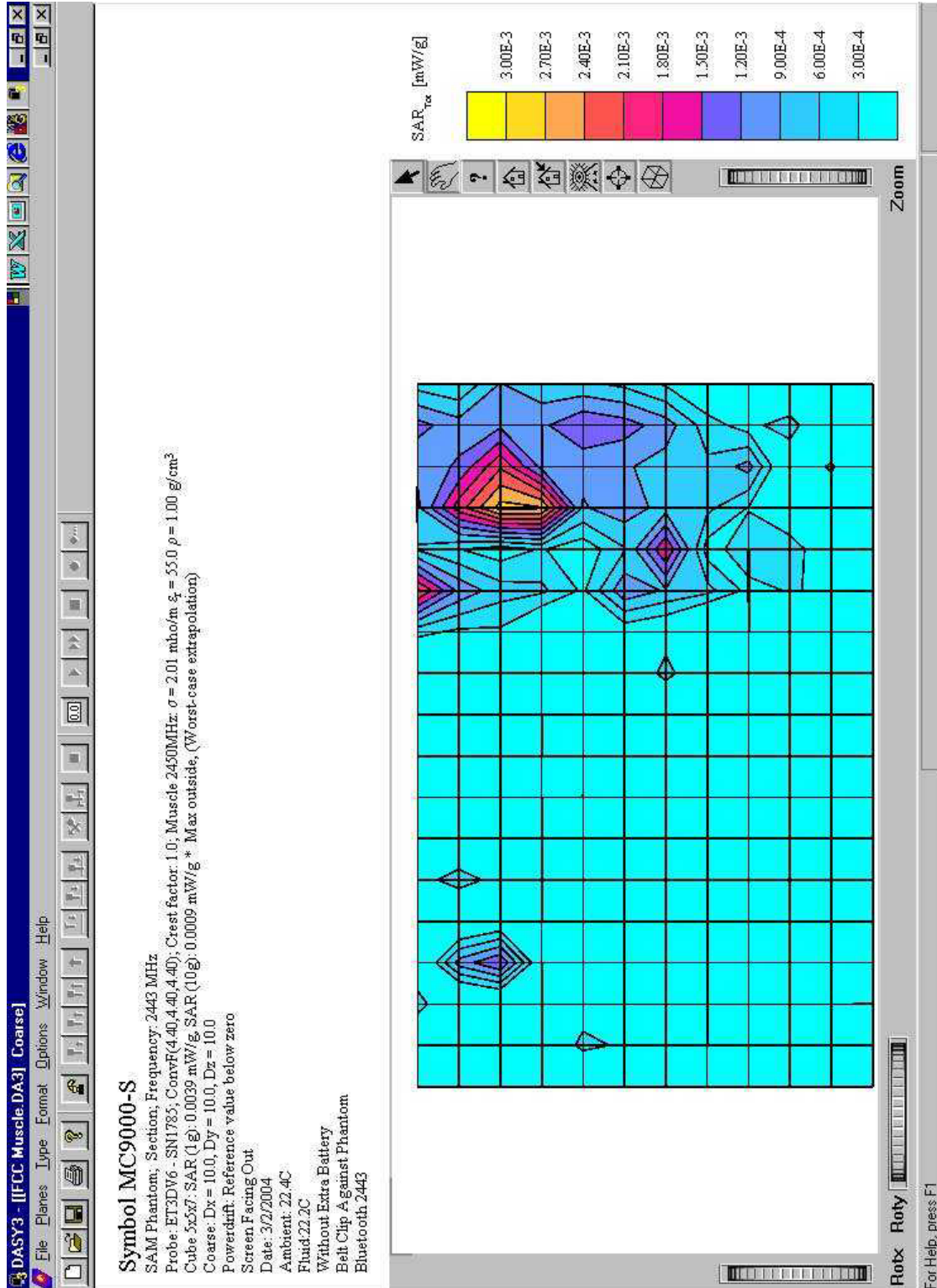
Symbol Technologies, Model No: MC9063

**Exhibit 20: Bluetooth Channel 2443 Screen Facing In With Extra Battery**



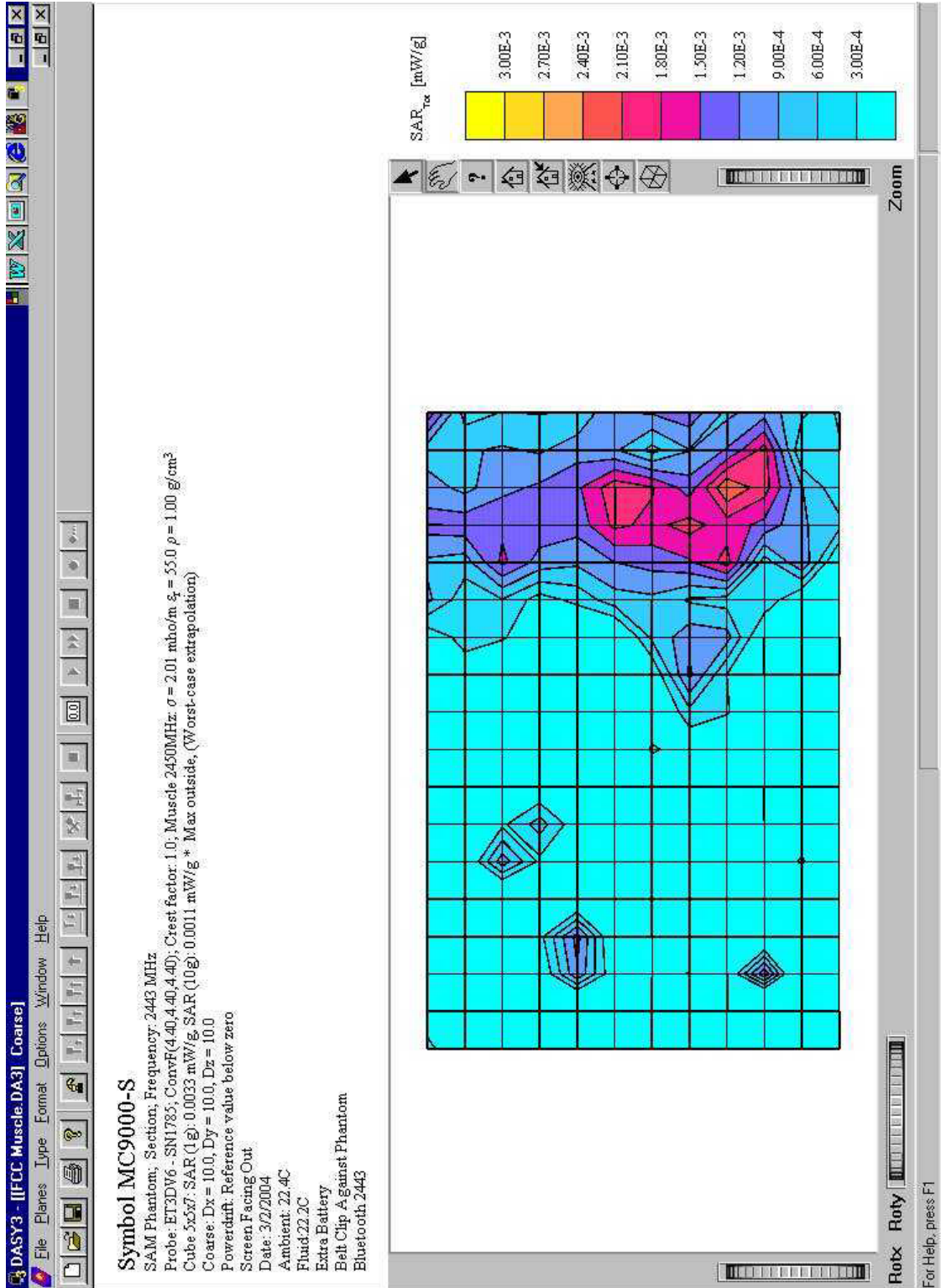
Symbol Technologies, Model No: MC9063

**Exhibit 21: Bluetooth Channel 2443 Screen Facing Out**



Symbol Technologies, Model No: MC9063

Exhibit 22: Bluetooth Channel 2443 Screen Facing Out With Extra Battery

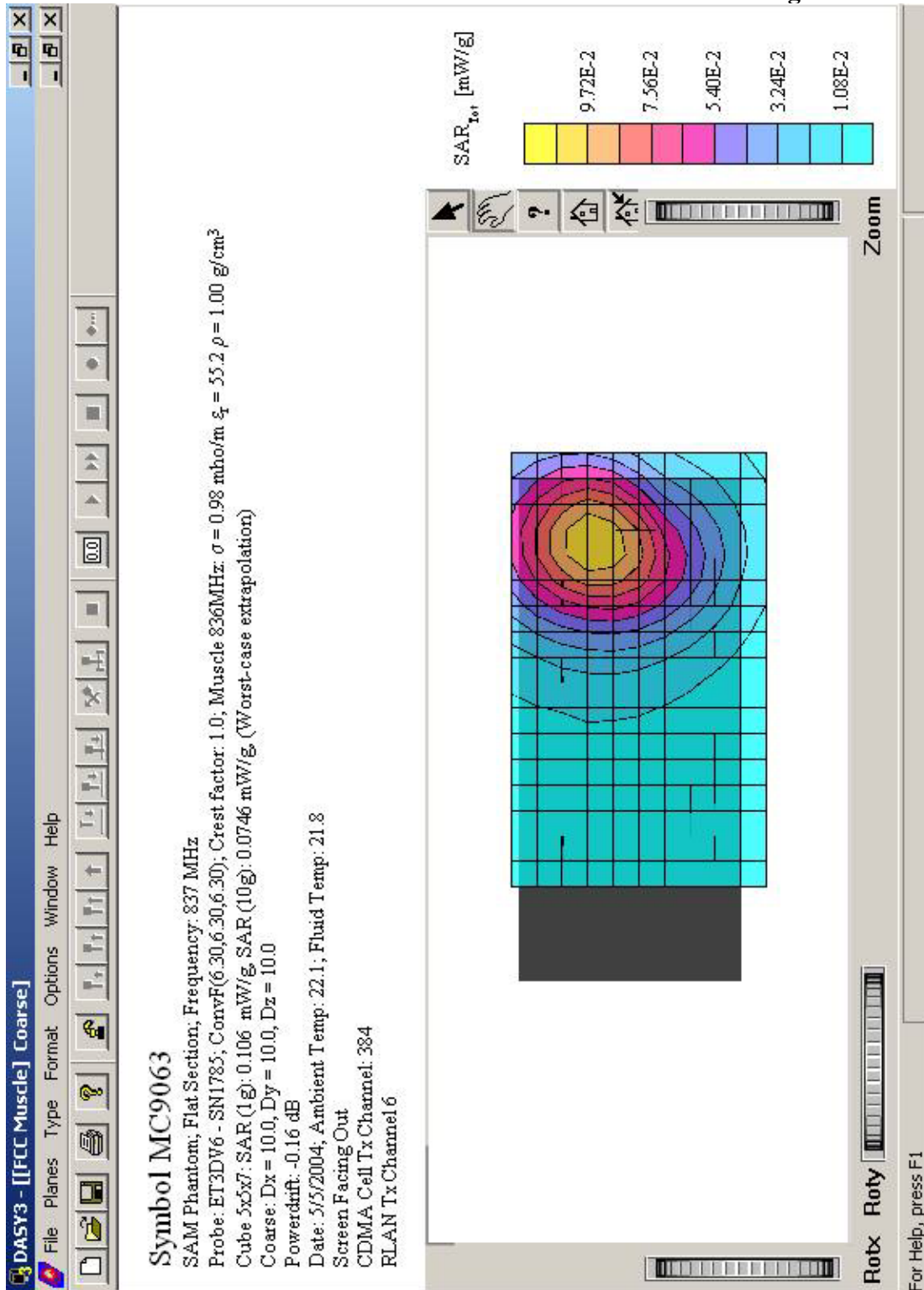




Symbol Technologies, Model No: MC9063

**SAR PLOTS FOR SIMULTANEOUS TRANSMITTER OPERATION**

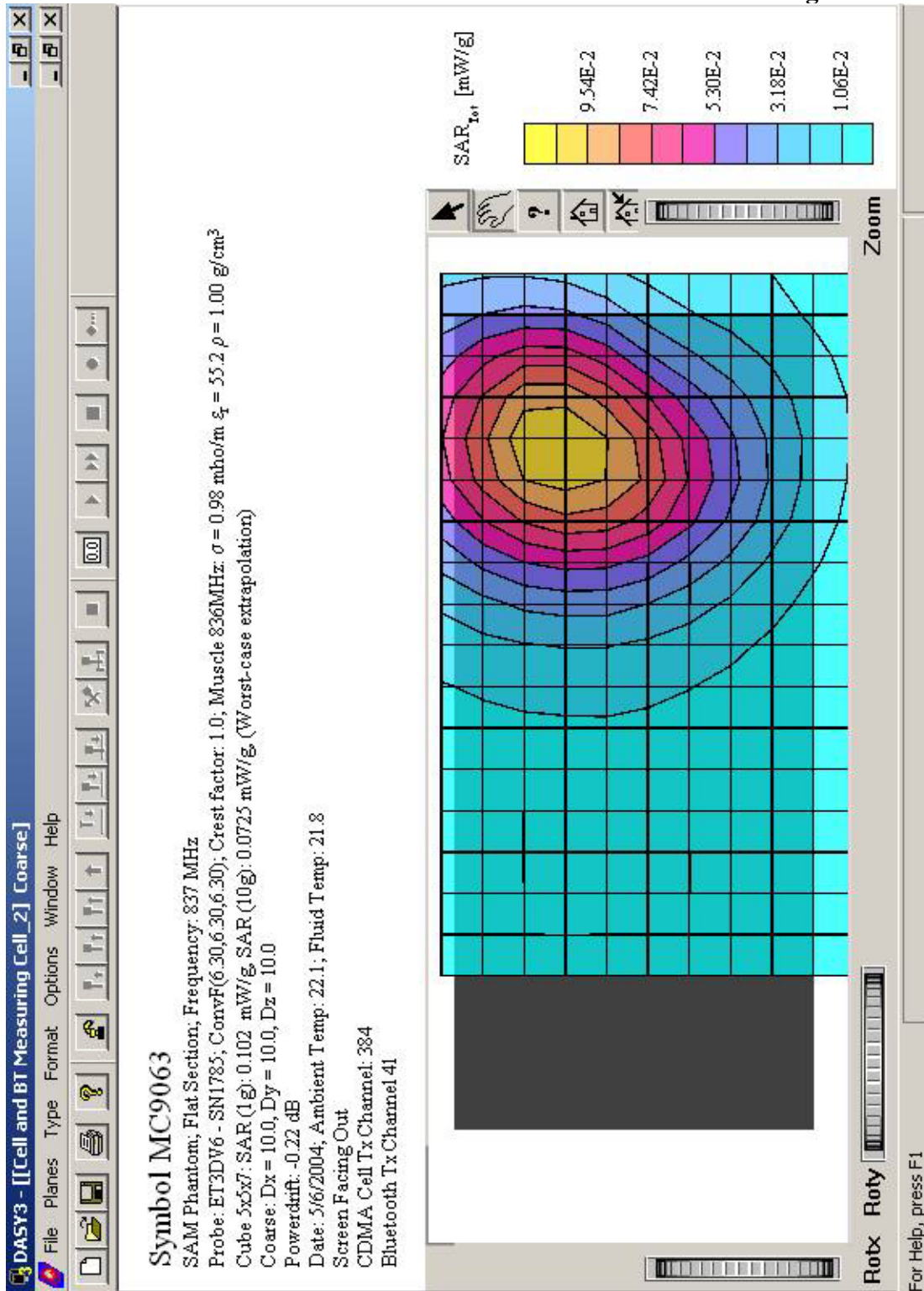
**Exhibit 23: Cell Channel 384 and RLAN Measuring Cell**





Symbol Technologies, Model No: MC9063

**Exhibit 24: Cell Channel 384 and Bluetooth Measuring Cell**

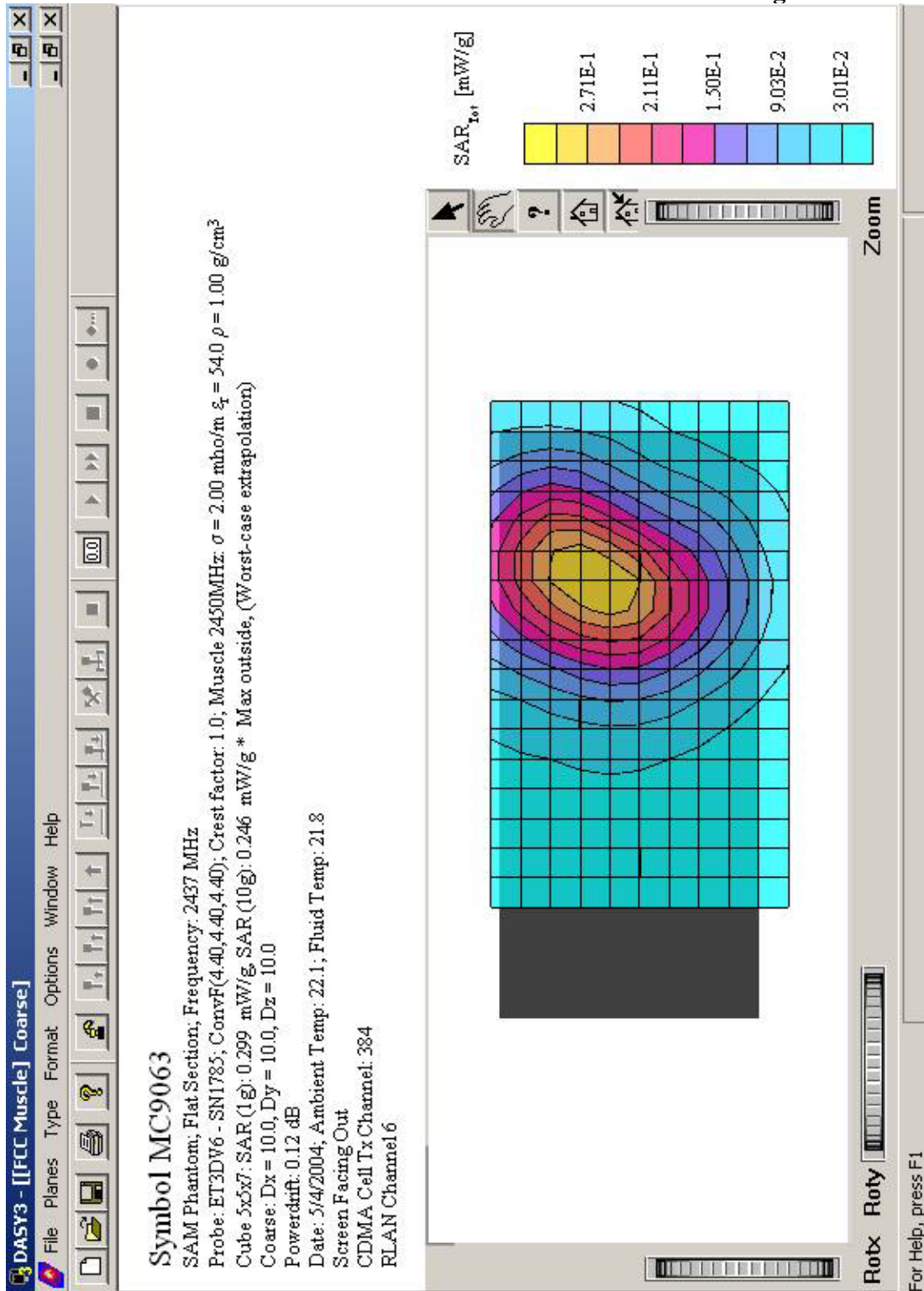






Symbol Technologies, Model No: MC9063

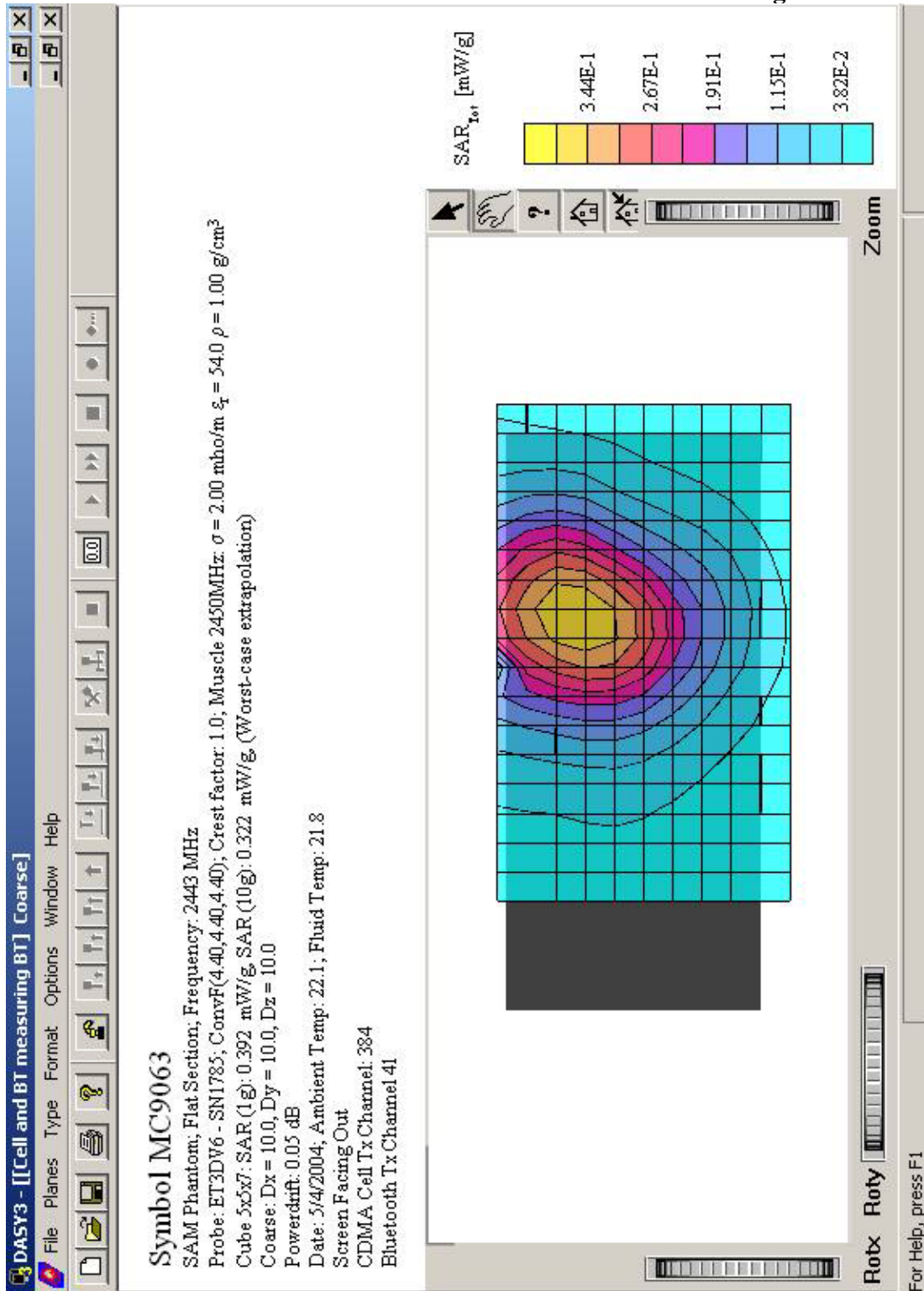
**Exhibit 27: Cell Channel 384 and RLAN Measuring RLAN**





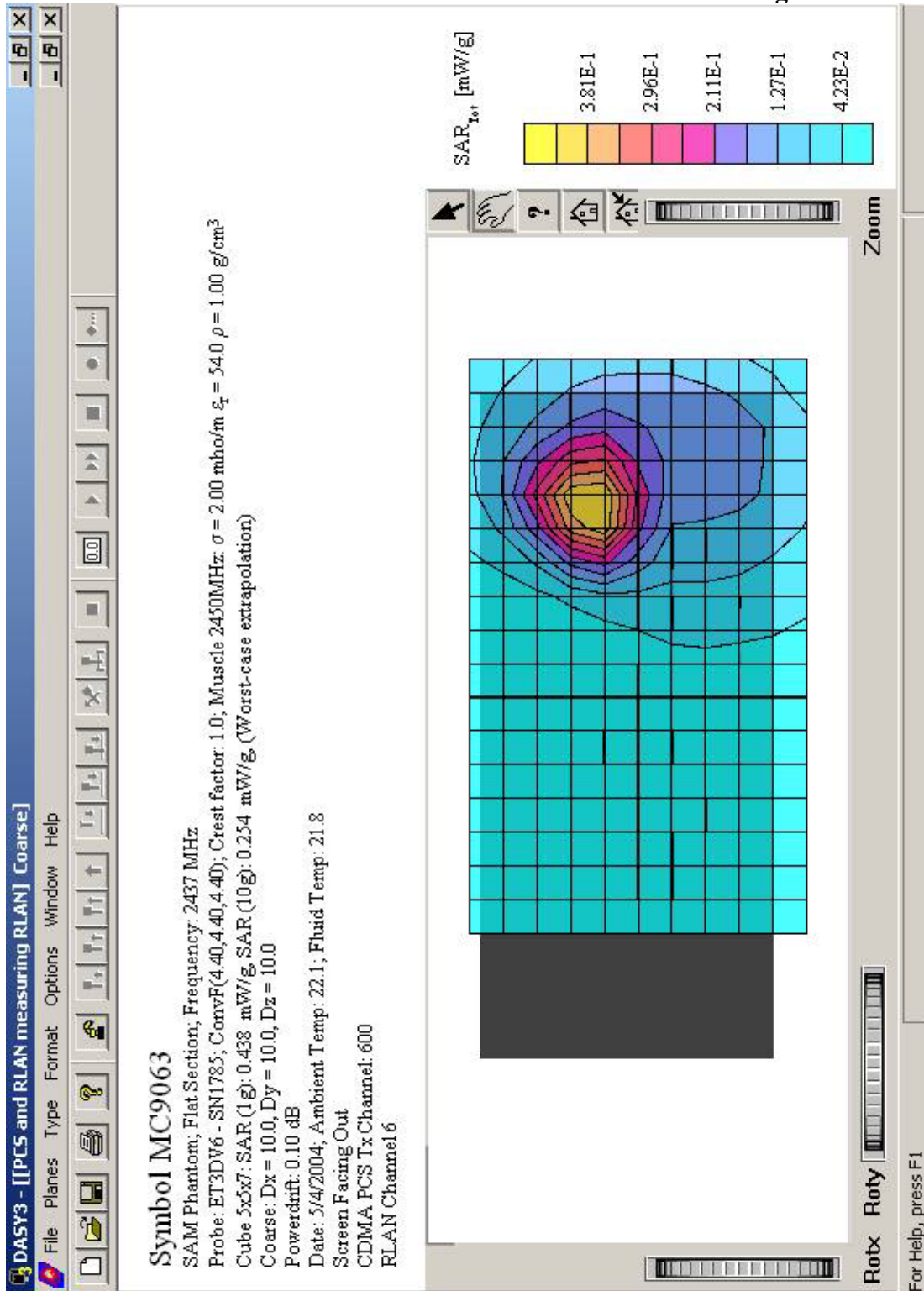
Symbol Technologies, Model No: MC9063

**Exhibit 28: Cell Channel 384 and Bluetooth Measuring Bluetooth**



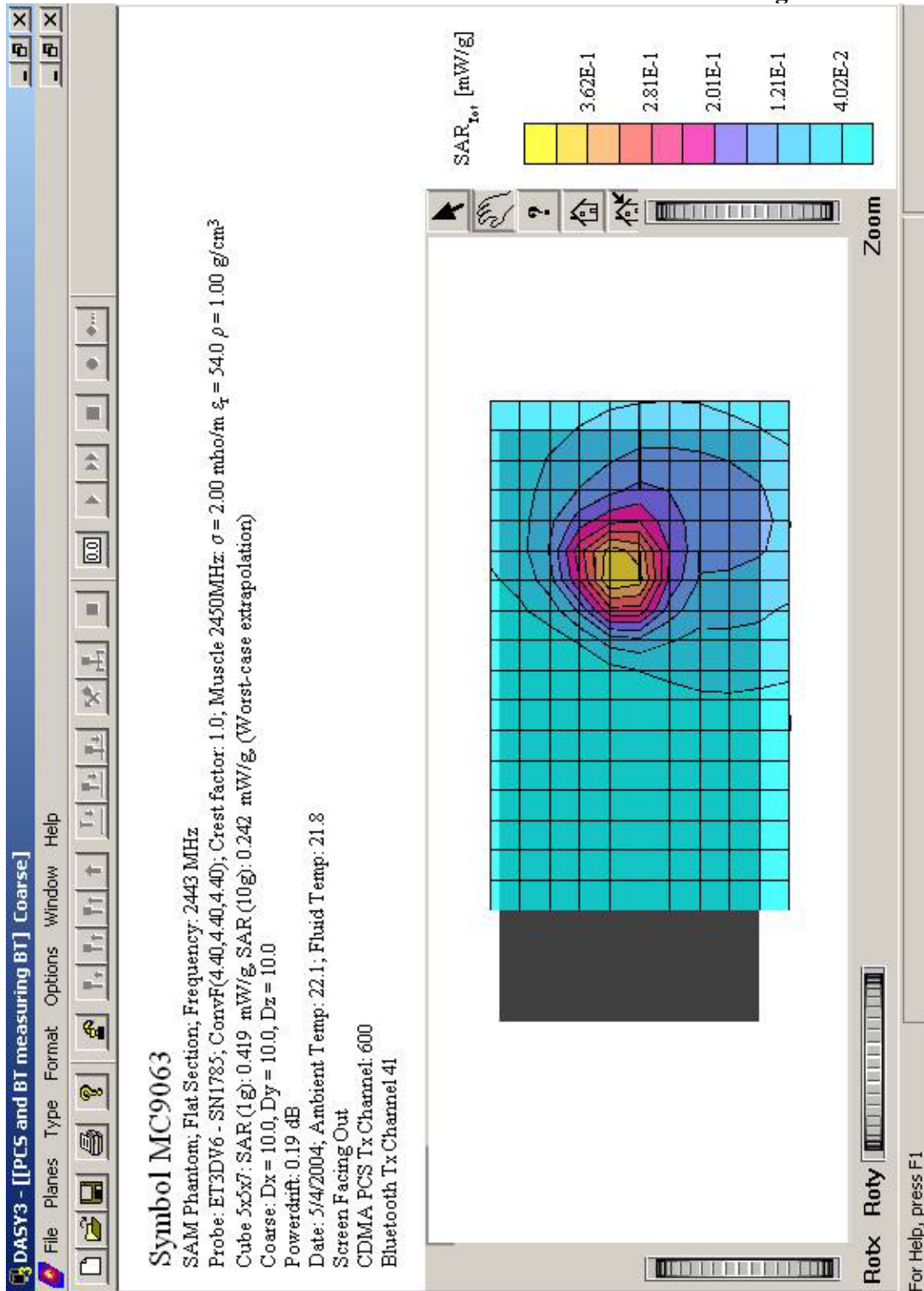
Symbol Technologies, Model No: MC9063

**Exhibit 29: PCS Channel 600 and RLAN Measuring RLAN**



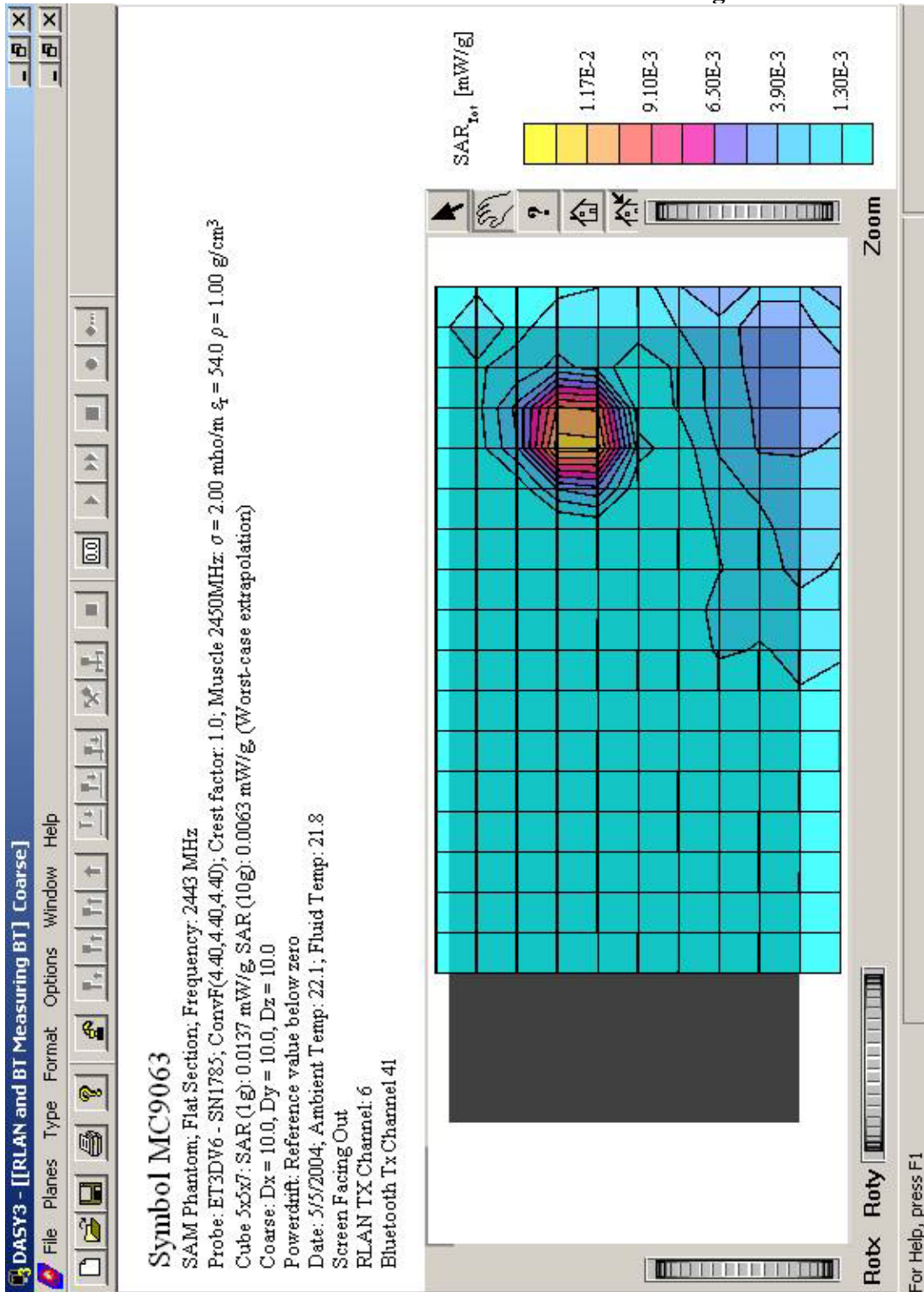
Symbol Technologies, Model No: MC9063

**Exhibit 30: PCS Channel 600 and Bluetooth Measuring Bluetooth**



Symbol Technologies, Model No: MC9063

**Exhibit 31: Bluetooth and RLAN Measuring Bluetooth**





Symbol Technologies, Model No: MC9063

**Exhibit 32: Bluetooth and RLAN Measuring RLAN**

