



SAR TEST REPORT

REPORT NO.: SA940825L08A

MODEL NO.: MC7094

RECEIVED: Oct. 11, 2005

TESTED: Oct. 11 ~ Oct. 23, 2005

ISSUED: Oct. 25, 2005

APPLICANT: Symbol Technologies, Inc.

ADDRESS: One Symbol Plaza, Holtsville, NY 11742, U.S.A.

ISSUED BY: Advance Data Technology Corporation

LAB ADDRESS: No. 47, 14th Ling, Chia Pau Tsuen, Lin Kou Hsiang
244, Taipei Hsien, Taiwan, R.O.C.

TEST LOCATION: No. 19, Hwa Ya 2nd Rd., Wen Hwa Tsuen, Kwei
Shan Hsiang, Taoyuan Hsien 333, Taiwan, R.O.C.

This test report consists of 94 pages in total except Appendix. It may be duplicated completely for legal use with the approval of the applicant. It should not be reproduced except in full, without the written approval of our laboratory. The client should not use it to claim product endorsement by CNLA, A2LA or any government agencies. The test results in the report only apply to the tested sample.





TABLE OF CONTENTS

1.	CERTIFICATION	3
2.	GENERAL INFORMATION	4
2.1	GENERAL DESCRIPTION OF EUT.....	4
2.2	GENERAL DESCRIPTION OF APPLIED STANDARDS	7
2.3	GENERAL INFOFRMATION OF THE SAR SYSTEM	8
2.4	GENERAL DESCRIPTION OF THE SPATIAL PEAK SAR EVALUATION	11
3.	DESCRIPTION OF SUPPORT UNITS	15
4.	DESCRIPTION OF TEST POSITION	16
4.1.	DESCRIPTION OF ANTENNA LOCATION	16
4.2.	DESCRIPTION OF TEST POSITION.....	20
4.2.1.	TOUCH/CHEEK TEST POSITION	21
4.2.2.	TILT TEST POSITION	22
4.2.3.	BODY-WORN CONFIGURATION	22
4.3.	DESCRIPTION OF ASSESSMENT POSITION.....	23
4.4.	DESCRIPTION OF TEST MODE.....	25
4.5.	SUMMARY OF TEST RESULT	28
5.	TEST RESULTS	34
5.1	TEST PROCEDURES	34
5.2	MEASURED SAR RESULTS	36
5.3	SAR LIMITS	70
5.4	RECIPES FOR TISSUE SIMULATING LIQUIDS.....	71
5.5	TEST EQUIPMENT FOR TISSUE PROPERTY	79
6.	SYSTEM VALIDATION	80
6.1	TEST EQUIPMENT	80
6.2	TEST PROCEDURE.....	81
6.3	VALIDATION RESULTS	83
6.4	SYSTEM VALIDATION UNCERTAINTIES (FREQUENCY BAND < 3GHz).....	84
6.5	SYSTEM VALIDATION UNCERTAINTIES (FREQUENCY BAND 5 ~ 6GHz)	85
7.	MEASUREMENT SAR PROCEDURE UNCERTAINTIES	86
7.1.	PROBE CALIBRATION UNCERTAINTY	86
7.2.	ISOTROPY UNCERTAINTY	87
7.3.	BOUNDARY EFFECT UNCERTAINTY.....	87
7.4.	PROBE LINEARITY UNCERTAINTY	88
7.5.	READOUT ELECTRONICS UNCERTAINTY	88
7.6.	RESPONSE TIME UNCERTAINTY	88
7.7.	INTEGRATION TIME UNCERTAINTY.....	89
7.8.	PROBE POSITIONER MECHANICAL TOLERANCE	90
7.9.	PROBE POSITIONING.....	90
7.10.	PHANTOM UNCERTAINTY	91
7.11.	DASY4 UNCERTAINTY BUDGET (FREQUENCY BAND < 3GHz).....	92
7.12.	DASY4 UNCERTAINTY BUDGET (FREQUENCY BAND 5 ~ 6GHz)	93
8.	INFORMATION ON THE TESTING LABORATORIES	94
APPENDIX A: TEST DATA		
APPENDIX B: ADT SAR MEASUREMENT SYSTEM		
APPENDIX C: PHOTOGRAPHS OF SYSTEM VALIDATION		
APPENDIX D: SYSTEM CERTIFICATE & CALIBRATION		
APPENDIX E: TEST CONFIGURATIONS		



1. CERTIFICATION

PRODUCT : EDA (Enterprise Digital Assistant)
MODEL NO.: MC7094
BRAND NAME: Symbol
APPLICANT : Symbol Technologies, Inc.
TESTED : Oct. 11 ~ Oct. 23, 2005
TEST SAMPLE : ENGINEERING SAMPLE
STANDARDS : FCC Part 2 (Section 2.1093), FCC OET Bulletin 65, Supplement C (01-01), RSS-102

The above equipment have been tested by **Advance Data Technology Corporation**, and found compliance with the requirement of the above standards. The test record, data evaluation & Equipment Under Test (EUT) configurations represented herein are true and accurate accounts of the measurements of the sample's EMC characteristics under the conditions specified in this report.

PREPARED BY : Wendy Liao , **DATE:** Oct. 25, 2005
Wendy Liao

TECHNICAL ACCEPTANCE : Stanely Hsu , **DATE:** Oct. 25, 2005
Responsible for RF Stanely Hsu

APPROVED BY : Cody Chang , **DATE:** Oct. 25, 2005
Cody Chang / Deputy Manger



2. GENERAL INFORMATION

2.1 GENERAL DESCRIPTION OF EUT

PRODUCT	EDA (Enterprise Digital Assistant)
MODEL NO.	MC7094
POWER SUPPLY	3.7Vdc from rechargeable lithium battery 5.4Vdc from power adapter for charger 12.0Vdc from power adapter for cradle
CLASSIFICATION	Portable device, production unit
MODULATION TYPE	Mobile phone: GMSK, 8BPSK for GSM, GPRS, E-GPRS Bluetooth: GFSK for FHSS WLAN: CCK, DQPSK, DBPSK for DSSS 64QAM, 16QAM, QPSK, BPSK for OFDM
FREQUENCY RANGE	Tx Frequency: 824.2MHz ~ 848.8MHz (GSM band) 1850.2MHz ~ 1909.8MHz (PCS band) 2402.0MHz ~ 2480.0MHz (Bluetooth) 2412.0MHz ~ 2462.0MHz (2.4GHz WLAN) 5745.0MHz ~ 5825.0MHz (5.0GHz WLAN) Rx Frequency: 869.2MHz ~ 893.8MHz (GSM band) 1930.2MHz ~ 1989.8MHz (PCS band) 2402.0MHz ~ 2480.0MHz (Bluetooth) 2412.0MHz ~ 2462.0MHz (2.4GHz WLAN) 5745.0MHz ~ 5825.0MHz (5.0GHz WLAN)
ANTENNA TYPE	Bluetooth: Chip antenna with 2.0dBi gain WLAN: PIFA antenna with 2.0dBi gain (for 2.4GHz) PIFA antenna with 2.5dBi gain (for 5.0GHz) Mobile phone: PIFA antenna with 0dBi gain (For GSM band) PIFA antenna with 0dBi gain (For PCS band)



CHANNEL FREQUENCIES UNDER TEST AND ITS MAX. CONDUCTED OUTPUT POWER	Bluetooth: 0.857mW / 2402.0MHz for channel 0 0.986mW / 2441.0MHz for channel 39 1.072mW / 2480.0MHz for channel 78
	2.4GHz WLAN: 22.439mW / 2412.0MHz for channel 1 for DSSS 40.087mW / 2437.0MHz for channel 6 for DSSS 25.177mW / 2462.0MHz for channel 11 for DSSS 25.527mW / 2412.0MHz for channel 1 for OFDM 44.978mW / 2437.0MHz for channel 6 for OFDM 25.177mW / 2462.0MHz for channel 11 for OFDM
	5.0GHz WLAN: 26.977mW / 5180.0MHz for channel 36 19.543mW / 5240.0MHz for channel 48 18.450mW / 5260.0MHz for channel 52 17.179mW / 5320.0MHz for channel 64 40.179mW / 5745.0MHz for channel 149 40.458mW / 5785.0MHz for channel 157 40.272mW / 5825.0MHz for channel 165
	GSM band: 1.416W / 824.2MHz for channel 128 1.483W / 836.6MHz for channel 190 1.626W / 848.8MHz for channel 251
	PCS band: 0.857W / 1850.2MHz for channel 512 0.836W / 1880.0MHz for channel 661 0.817W / 1909.8MHz for channel 810
MAX. AVERAGE SAR (1g)	Head: 0.004170W/kg (Bluetooth band) 0.402W/kg (2.4GHz WLAN band) 1.290W/kg (5.0GHz WLAN band) 0.375W/kg (GSM band) 0.437W/kg (PCS band)
	Body: 0.000234W/kg (Bluetooth band) 0.053W/kg (2.4GHz WLAN band) 0.219W/kg (5.0GHz WLAN band) 0.111W/kg (GSM band) 0.077W/kg (PCS band)



DATA CABLE	0.92m non-shielded cable for earphone
I/O PORTS	Refer to user's manual
ASSOCIATED DEVICES	Earphone, cradle

NOTE:

1. The EUT is an EDA (Enterprise Digital Assistant) with wireless LAN, bluetooth and mobile phone (GSM850, PCS1900) functions.
2. The EUT is a GPRS class 12 device, which provide 4 up-link.
3. The EUT is an E-GPRS class 10 device, which provide 2 up-link.
4. IMEI Code: 355634 000001 ~ 999999.
5. The EDA supports two battery options, Heavy (high capacity) and Main (normal). Both options were assessed and the heavy battery was found to be worst case and was selected for the final test configuration.

HEAVY BATTERY:	
BRAND:	Symbol
MODEL:	82-71364-01
RATING:	3.7Vdc, 3800mAh

MAIN BATTERY:	
BRAND:	Symbol
MODEL:	82-71363-01
RATING:	3.7Vdc, 1900mAh

6. The wireless LAN included two dual band antennas. After pre-testing both primary and auxiliary antennas, the former as the worst case, was chosen for final test.
7. The cradle was operated with following power adapter:

BRAND:	HIPRO
MODEL:	HP-O2040D43
INPUT:	100-240Vac, 50-60Hz, 1.5A
OUTPUT:	12Vdc, 3.33A
POWER LINE:	AC 1.8m non-shielded cable without core DC 1.8m non-shielded cable with one core

8. The EUT was operated with following charging cradle:

BRAND:	Delta
MODEL:	ADP-16GB A
INPUT:	100-240Vac, 50-60Hz, 0.4A
OUTPUT:	5.4Vdc, 3A
POWER LINE:	AC 0.7m non-shielded cable without core DC 1.87m non-shielded cable with one core



9. The EDA supports two keypad options, Query or Numeric. Both options were assessed and the Numeric was found to be worst case and was selected for the final test configuration.
10. The above EUT information was declared by manufacturer and for more detailed features description, please refer to the manufacturer's specifications or User's Manual.

2.2 GENERAL DESCRIPTION OF APPLIED STANDARDS

According to the specifications of the manufacturer, this product must comply with the requirements of the following standards:

FCC 47 CFR Part 2 (2.1093)

FCC OET Bulletin 65, Supplement C (01- 01)

RSS-102

IEEE 1528-2003

All test items have been performed and recorded as per the above standards.



2.3 GENERAL INFORMATION OF THE SAR SYSTEM

DASY4 (software 4.5 Build 19) consists of high precision robot, probe alignment sensor, phantom, robot controller, controlled measurement server and near-field probe. The robot includes six axes that can move to the precision position of the DASY4 software defined. The DASY4 software can define the area that is detected by the probe. The robot is connected to controlled box. Controlled measurement server is connected to the controlled robot box. The DAE includes amplifier, signal multiplexing, AD converter, offset measurement and surface detection. It is connected to the Electro-optical coupler (ECO). The ECO performs the conversion from the optical into digital electric signal of the DAE and transfers data to the PC.

ET3DV6 ISOTROPIC E-FIELD PROBE (FREQUENCY BAND < 3GHz)

CONSTRUCTION	Symmetrical design with triangular core. Built-in optical fiber for surface detection system. Built-in shielding against static charges. PEEK enclosure material (resistant to organic solvents, e.g., glycoether).
FREQUENCY	10 MHz to 3 GHz; Linearity: ± 0.2 dB (30 MHz to 3 GHz)
DYNAMIC RANGE	5 μ W/g to > 100 mW/g; Linearity: ± 0.2 dB
OPTICAL SURFACE DETECTION	± 0.2 mm repeatability in air and clear liquids over diffuse reflecting surfaces
DIMENSIONS	Overall length: 330 mm (Tip Length: 16 mm) Tip diameter: 6.8 mm (Body diameter: 12 mm) Distance from probe tip to dipole centers: 2.7 mm
APPLICATION	General dosimetric measurements up to 3 GHz Fast automatic scanning in arbitrary phantoms (ET3DV6)

EX3DV3 ISOTROPIC E-FIELD PROBE (FREQUENCY BAND 5 ~ 6GHz)

DIMENSIONS	Overall length: 330 mm (Tip Length: 20 mm) Tip diameter: 2.5 mm (Body diameter: 12 mm) Distance from probe tip to dipole centers: 1.0 mm
APPLICATION	General dosimetric measurements range 5 ~ 6 GHz. Fast automatic scanning in arbitrary phantoms (EX3DV3)

NOTE: The Probe parameters have been calibrated by the SPEAG. Please reference "APPENDIX D" for the Calibration Certification Report.



SYSTEM VALIDATION KITS:

CONSTRUCTION	Symmetrical dipole with 1/4 balun Enables measurement of feedpoint impedance with NWA Matched for use near flat phantoms filled with brain simulating solutions Includes distance holder and tripod adaptor
CALIBRATION	Calibrated SAR value for specified position and input power at the flat phantom in brain simulating solutions
FREQUENCY	835, 900, 1800, 1900, 2450, 5200, 5800MHz
RETURN LOSS	> 20 dB at specified validation position
POWER CAPABILITY	> 100 W (f < 1GHz); > 40 W (f > 1GHz)
OPTIONS	Dipoles for other frequencies or solutions and other calibration conditions upon request

TWIN SAM V4.0

CONSTRUCTION	The shell corresponds to the specifications of the Specific Anthropomorphic Mannequin (SAM) phantom defined in IEEE 1528-2003, CENELEC 50361 and IEC 62209. It enables the dosimetric evaluation of left and right hand phone usage as well as body mounted usage at the flat phantom region. A cover prevents evaporation of the liquid. Reference markings on the phantom allow the complete setup of all predefined phantom positions and measurement grids by manually teaching three points with the robot.
SHELL THICKNESS	2 ± 0.2 mm
FILLING VOLUME	Approx. 25 liters
DIMENSIONS	Height: 810 mm; Length: 1000 mm; Width: 500 mm



DEVICE HOLDER FOR SAM TWIN PHANTOM

CONSTRUCTION

The device holder for the Mobile Phone device is designed to cope with different positions given in the standard. It has two scales for the device rotation (with respect to the body axis) and the device inclination (with respect to the line between the ear reference points). The rotation centers for both scales is the ear reference point (ERP). Thus the device needs no repositioning when changing the angles. The holder has been made out of low-loss POM material having the following dielectric parameters: relative permittivity $\epsilon = 3$ and loss tangent $\delta = 0.02$. The amount of dielectric material has been reduced in the closest vicinity of the device, since measurements have suggested that the influence of the clamp on the test results could thus be lowered. The device holder for the portable device makes up of the polyethylene foam. The dielectric parameters of material close to the dielectric parameters of the air.

DATA ACQUISITION ELECTRONICS

CONSTRUCTION

The data acquisition electronics (DAE3) consists of a highly sensitive electrometer grade preamplifier with auto-zeroing, a channel and gain-switching multiplex, a fast 16 bit AD converter and a command decoder and control logic unit. Transmission to the measurement server is accomplished through an optical downlink for data and status information as well as an optical uplink for commands and the clock. The mechanical probe is mounting device includes two different sensor systems for frontal and sideways probe contacts. They are used for mechanical surface detection and probe collision detection. The input impedance of the DAE3 box is 200M Ω ; the inputs are symmetrical and floating. Common mode rejection is above 80 dB.



2.4 GENERAL DESCRIPTION OF THE SPATIAL PEAK SAR EVALUATION

The DASY4 post-processing software (SEMCAD) automatically executes the following procedures to calculate the field units from the micro-volt readings at the probe connector. The parameters used in the evaluation are stored in the configuration modules of the software:

Probe parameters:	- Sensitivity	Norm _i , a _{i0} , a _{i1} , a _{i2}
	- Conversion factor	ConvF _i
	- Diode compression point	dcp _i
Device parameters:	- Frequency	F
	- Crest factor	Cf
Media parameters:	- Conductivity	σ
	- Density	ρ

The first step of the evaluation is a linearization of the filtered input signal to account for the compression characteristics of the detector diode. The compensation depends on the input signal, the diode type and the DC-transmission factor from the diode to the evaluation electronics. If the exciting field is pulsed, the crest factor of the signal must be known to correctly compensate for peak power. The formula for each channel can be given as:

$$V_i = U_i + U_i^2 \cdot \frac{cf}{dcp_i}$$

V _i	=compensated signal of channel i	(i = x, y, z)
U _i	=input signal of channel i	(i = x, y, z)
Cf	=crest factor of exciting field	(DASY parameter)
dcp _i	=diode compression point	(DASY parameter)

From the compensated input signals the primary field data for each channel can be evaluated:

$$\text{E-field probes: } E_i = \sqrt{\frac{V_i}{\text{Norm}_i \cdot \text{ConvF}}}$$

$$\text{H-field probes: } H_i = \sqrt{V_i} \cdot \frac{a_{i0} + a_{i1}f + a_{i2}f^2}{f}$$

V_i = compensated signal of channel I (i = x, y, z)

Norm_i = sensor sensitivity of channel i $\mu\text{V}/(\text{V/m})^2$ for E- (i = x, y, z) field Probes

ConvF = sensitivity enhancement in solution

a_{ij} = sensor sensitivity factors for H-field probes

F = carrier frequency [GHz]

E_i = electric field strength of channel i in V/m

H_i = magnetic field strength of channel i in A/m

The RSS value of the field components gives the total field strength (Hermitian magnitude):

$$E_{tot} = \sqrt{E_x^2 + E_y^2 + E_z^2}$$

The primary field data are used to calculate the derived field units.

$$SAR = E_{tot}^2 \cdot \frac{\sigma}{\rho \cdot 1'000}$$

SAR = local specific absorption rate in mW/g

E_{tot} = total field strength in V/m

σ = conductivity in [mho/m] or [Siemens/m]

ρ = equivalent tissue density in g/cm³



Note that the density is set to 1, to account for actual head tissue density rather than the density of the tissue simulating liquid. The entire evaluation of the spatial peak values is performed within the Post-processing engine (SEMCAD). The system always gives the maximum values for the 1 g and 10 g cubes. The algorithm to find the cube with highest averaged SAR is divided into the following stages:

1. The extraction of the measured data (grid and values) from the Zoom Scan
2. The calculation of the SAR value at every measurement point based on all stored data (A/D values and measurement parameters)
3. The generation of a high-resolution mesh within the measured volume
4. The interpolation of all measured values from the measurement grid to the high-resolution grid
5. The extrapolation of the entire 3-D field distribution to the phantom surface over the distance from sensor to surface
6. The calculation of the averaged SAR within masses of 1 g and 10 g.

The probe is calibrated at the center of the dipole sensors that is located 1 to 2.7mm away from the probe tip. During measurements, the probe stops shortly above the phantom surface, depending on the probe and the surface detecting system. Both distances are included as parameters in the probe configuration file. The software always knows exactly how far away the measured point is from the surface. As the probe cannot directly measure at the surface, the values between the deepest measured point and the surface must be extrapolated. The angle between the probe axis and the surface normal line is less than 30 degree.

In the Area Scan, the gradient of the interpolation function is evaluated to find all the extreme of the SAR distribution. The uncertainty on the locations of the extreme is less than 1/20 of the grid size. Only local maximum within -2 dB of the global maximum are searched and passed for the Cube Scan measurement. In the Cube Scan, the interpolation function is used to extrapolate the Peak SAR from the lowest measurement points to the inner phantom surface (the extrapolation distance). The uncertainty increases with the extrapolation distance. To keep the uncertainty within 1% for the 1 g and 10 g cubes, the extrapolation distance should not be larger than 5mm.



The maximum search is automatically performed after each area scan measurement. It is based on splines in two or three dimensions. The procedure can find the maximum for most SAR distributions even with relatively large grid spacing. After the area scanning measurement, the probe is automatically moved to a position at the interpolated maximum. The following scan can directly use this position for reference, e.g., for a finer resolution grid or the cube evaluations. The 1g and 10g peak evaluations are only available for the predefined cube 7 x 7 x 7 scans. The routines are verified and optimized for the grid dimensions used in these cube measurements. The measured volume of 30 x 30 x 30mm contains about 30g of tissue. The first procedure is an extrapolation (incl. boundary correction) to get the points between the lowest measured plane and the surface. The next step uses 3D interpolation to get all points within the measured volume in a 1mm grid (42875 points). In the last step, a 1g cube is placed numerically into the volume and its averaged SAR is calculated. This cube is then moved around until the highest averaged SAR is found. If the highest SAR is found at the edge of the measured volume, the system will issue a warning: higher SAR values might be found outside of the measured volume. In that case the cube measurement can be repeated, using the new interpolated maximum as the center.



3. DESCRIPTION OF SUPPORT UNITS

The EUT has been tested as an independent unit together with other necessary accessories or support units. The following support units or accessories were used to form a representative test configuration during the tests.

NO.	PRODUCT	BRAND	MODEL NO.	SERIAL NO.	CALIBRATED UNTIL
1	Universal Radio Communication Tester	R&S	CMU200	101095	Oct. 06, 2006

NO.	SIGNAL CABLE DESCRIPTION OF THE ABOVE SUPPORT UNITS
1	NA

NOTE: All power cords of the above support units are non shielded (1.8m).

4. DESCRIPTION OF TEST POSITION

4.1. DESCRIPTION OF ANTENNA LOCATION

BLUETOOTH ANTENNA:



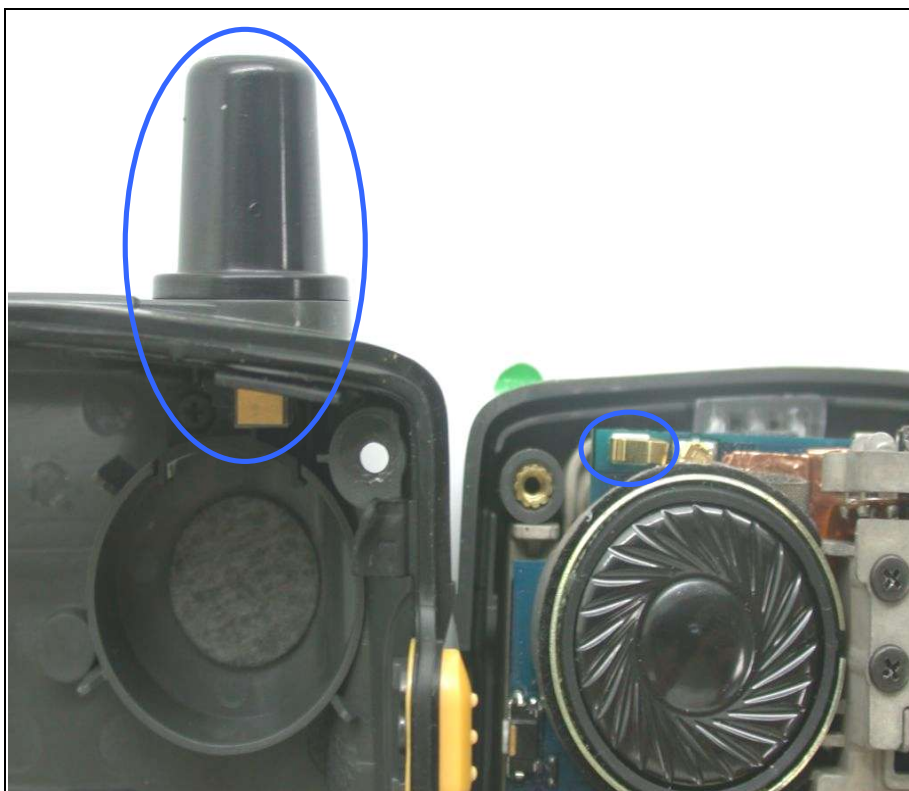
WIRELESS LAN ANTENNA: MAIN ANTENNA



AUXILIARY ANTENNA



GSM ANTENNA:



4.2. DESCRIPTION OF TEST POSITION

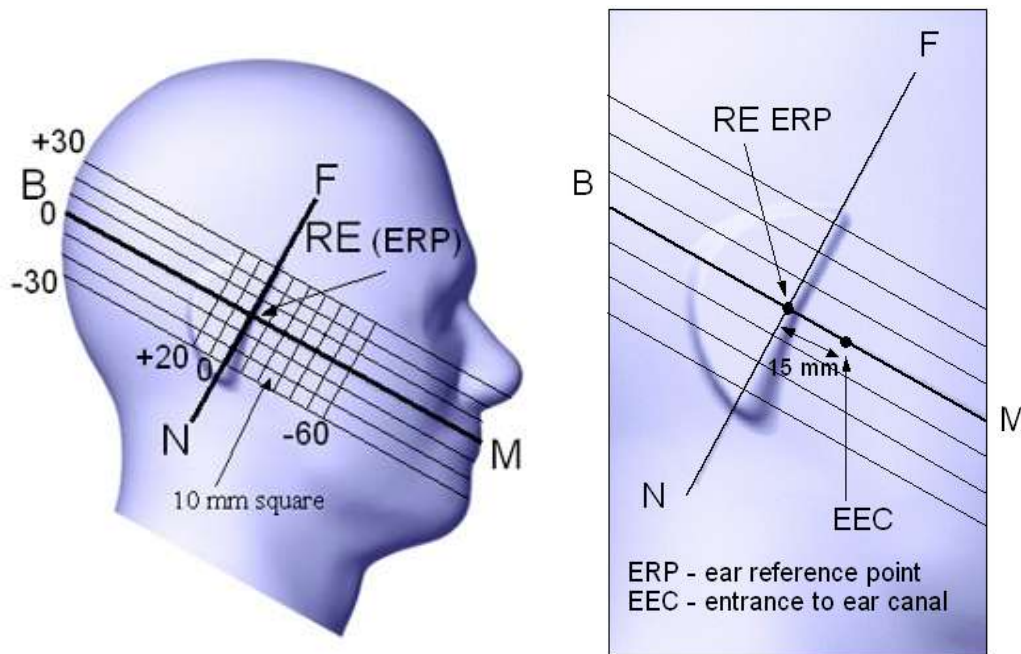


FIGURE 3.1

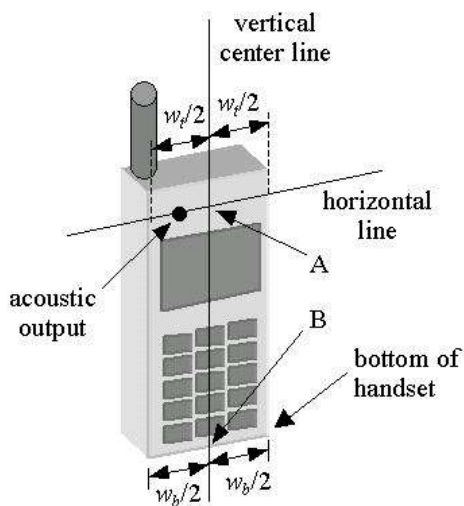


FIGURE 3.1a

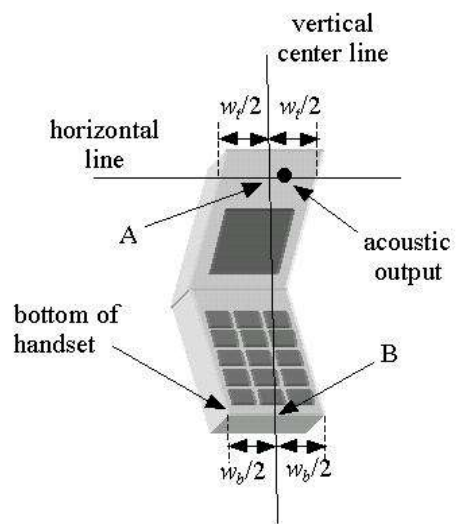
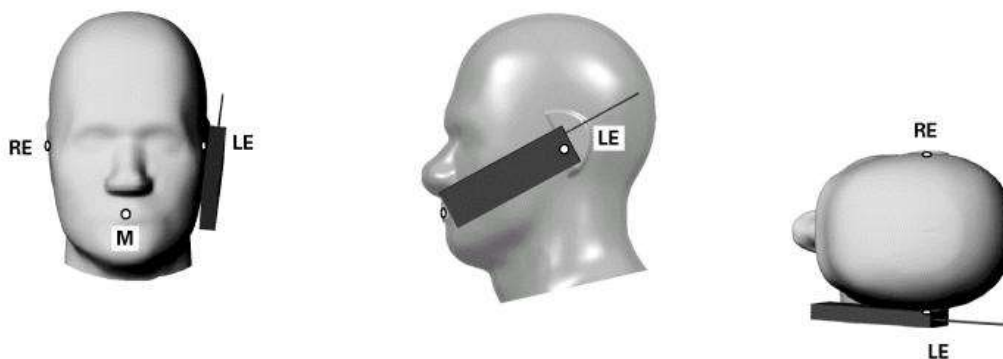


FIGURE 3.1b

4.2.1. TOUCH/CHEEK TEST POSITION

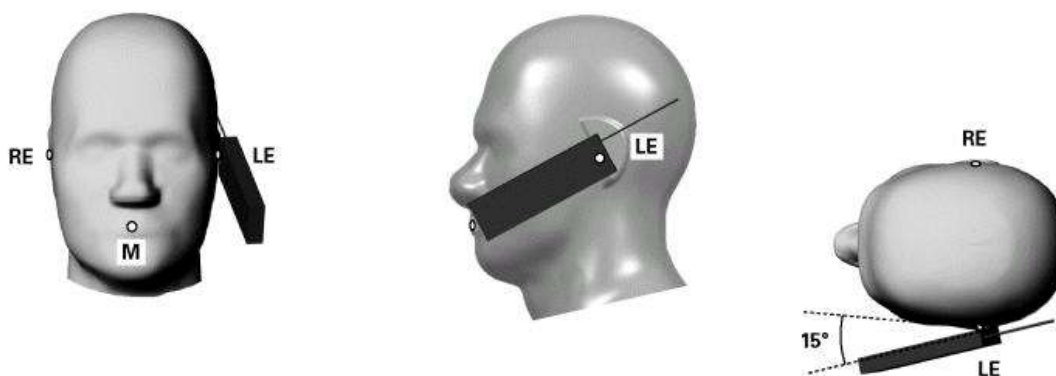
The head position in Figure 3.1, the ear reference points ERP are 15mm above entrance to ear canal along the B-M line. The line N-F (Neck-Front) is perpendicular to the B-M (Back Mouth) line. The handset device in Figure 3.1a and 3.1b, The vertical centerline pass through two points on the front side of handset: the midpoint of the width w_t of the handset at the level of the acoustic output (point A) and the midpoint of the width w_b of the bottom of the handset (point B). The vertical centerline is perpendicular to the horizontal line and pass through the center of the acoustic output. The point A touches the ERP and the vertical centerline of the handset is parallel to the B-M line. While maintaining the point A contact with the ear(ERP), rotate the handset about the line NF until any point on handset is in contact with the cheek of the phantom



TOUCH/CHEEK POSITION FIGURE

4.2.2. TILT TEST POSITION

Adjust the device in the cheek position. While maintaining a point of the handset contact in the ear, move the bottom of the handset away from the mouth by an angle of 15 degrees.



TILT POSITION FIGURE

4.2.3. BODY-WORN CONFIGURATION

The handset device attached the belt clip or the holster. The keypad face of the handset is against with the bottom of the flat phantom face and the bottom of the keypad face contact to the bottom of the flat phantom.

When multiple accessories that do not contain metallic components are supplied with the device, the device may be tested with only the accessory that dictates the closest spacing to the body. When multiple accessories that contain metallic components are supplied with the device, the device must be tested with each accessory that contains a unique metallic component. If multiple accessories share an identical metallic component (e.g., the same metallic belt-clip used with different holsters with no other metallic components), only accessory that dictates the closest spacing to the body must be tested.

4.3. DESCRIPTION OF ASSESSMENT POSITION

The following test configurations have been applied in this test report:

A. RIGHT HEAD POSITION:



B. LEFT HEAD POSITION:



C. BODY POSITION:

The front of the EUT with belt clip, contacted to the flat phantom with 0mm separation distance.



BODY POSITION



BELT CLIP

4.4. DESCRIPTION OF TEST MODE

TEST MODE	COMMUNICATION MODE	MODULATION TECHNOLOGY	ASSESSMENT POSITION	TESTED CHANNEL	REMARK
1	GSM850	GSM	A / Cheek	L, M, H	-
2		GSM	A / Tilt	L, M, H	-
3		GSM	B / Cheek	L, M, H	-
4		GSM	B / Tilt	L, M, H	-
5		GPRS with 1 time slot	C	M	-
6		GPRS with 3 time slots	C	M	-
7		GPRS with 4 time slots	C	M	-
8		GPRS with 2 time slots	C	L, M, H	-
9		E-GPRS with 2 time slots	C	L	-
10		E-GPRS with 1 time slot	C	L, M, H	-
11	PCS1900	GSM	A / Cheek	L, M, H	-
12		GSM	A / Tilt	L, M, H	-
13		GSM	B / Cheek	L, M, H	-
14		GSM	B / Tilt	L, M, H	-
15		GPRS with 1 time slot	C	M	-
16		GPRS with 3 time slots	C	M	-
17		GPRS with 4 time slots	C	M	-
18		GPRS with 2 time slots	C	L, M, H	-
19		E-GPRS with 1 time slot	C	M	-
20		E-GPRS with 2 time slots	C	L, M, H	-



TEST MODE	COMMUNICATION MODE	MODULATION TECHNOLOGY	ASSESSMENT POSTITION	TESTED CHANNEL	REMARK
21	WLAN (2.4GHz)	DSSS	A / Cheek	L, M, H	-
22		DSSS	A / Tilt	L, M, H	-
23		DSSS	B / Cheek	L, M, H	-
24		DSSS	B / Tilt	L, M, H	-
25		DSSS	C	L, M, H	-
26		OFDM	A / Cheek	L, M, H	-
27		OFDM	A / Tilt	L, M, H	-
28		OFDM	B / Cheek	L, M, H	-
29		OFDM	B / Tilt	L, M, H	-
30		OFDM	C	L, M, H	-
31	Bluetooth	GFSK	A / Cheek	L, M, H	-
32		GFSK	A / Tilt	L, M, H	-
33		GFSK	B / Cheek	L, M, H	-
34		GFSK	B / Tilt	L, M, H	-
35		GFSK	C	L, M, H	-
36	WLAN (5.0GHz)	OFDM	A / Cheek	36, 48, 52, 64, 149, 157, 165	-
37		OFDM	A / Tilt	36, 48, 52, 64, 149, 157, 165	-
38		OFDM	B / Cheek	36, 48, 52, 64, 149, 157, 165	-
39		OFDM	B / Tilt	36, 48, 52, 64, 149, 157, 165	-
40		OFDM	C	36, 48, 52, 64, 149, 157, 165	-



TEST MODE	COMMUNICATION MODE	MODULATION TECHNOLOGY	ASSESSMENT POSTITION	TESTED CHANNEL	REMARK
41	GSM850 + WLAN (2.4GHz) + Bluetooth	NOTE	A / Cheek	NOTE	Co-located mode
42	GSM850 + WLAN (5.0GHz) + Bluetooth	NOTE	A / Tilt	NOTE	Co-located mode
43	GSM850 + WLAN (2.4GHz) + Bluetooth	NOTE	B / Tilt	NOTE	Co-located mode
44	GSM850 + WLAN (5.0GHz) + Bluetooth	NOTE	B / Tilt	NOTE	Co-located mode
45	PCS1900 + WLAN (2.4GHz) + Bluetooth	NOTE	A / Cheek	NOTE	Co-located mode
46	PCS1900 + WLAN (5.0GHz) + Bluetooth	NOTE	A / Tilt	NOTE	Co-located mode
47	PCS1900 + WLAN (2.4GHz) + Bluetooth	NOTE	B / Cheek	NOTE	Co-located mode
48	PCS1900 + WLAN (5.0GHz) + Bluetooth	NOTE	B / Tilt	NOTE	Co-located mode
49	GSM850 + WLAN (2.4GHz) + Bluetooth	NOTE	C	NOTE	Co-located mode
50	GSM850 + WLAN (5.0GHz) + Bluetooth	NOTE	C	NOTE	Co-located mode
51	PCS1900 + WLAN (2.4GHz) + Bluetooth	NOTE	C	NOTE	Co-located mode
52	PCS1900 + WLAN (5.0GHz) + Bluetooth	NOTE	C	NOTE	Co-located mode

NOTE: The combination is from the worst situation of each communication mode.

4.5. SUMMARY OF TEST RESULT

PART OF ASSESSMENT	HEAD POSITION			
COMMUNICATION MODE	GSM850			
	MEASURED VALUE OF 1g SAR (W/kg)			
	RIGHT		LEFT	
CHANNEL	CHEEK	TILT	CHEEK	TILT
LOW	0.291	0.274	0.310	0.322
MIDDLE	0.305	0.287	0.324	0.339
HIGH	0.342	0.322	0.360	0.375

NOTE: The worst value of each battery has been marked by boldface.

PART OF ASSESSMENT	BODY POSITION			
COMMUNICATION MODE	GPRS850			
	MEASURED VALUE OF 1g SAR (W/kg)			
	1 TIME SLOT	2 TIME SLOTS	3 TIME SLOTS	4 TIME SLOTS
LOW	-	0.099	-	-
MIDDLE	0.086	0.107	0.104	0.095
HIGH	-	0.111	-	-

NOTE: 1. The worst value of each battery has been marked by boldface.

2. After pre-testing, 2 time slots is the worst to do the final test.

PART OF ASSESSMENT	BODY POSITION	
COMMUNICATION MODE	E-GPRS850	
	MEASURED VALUE OF 1g SAR (W/kg)	
	1 TIME SLOT	2 TIME SLOTS
LOW	0.026	0.018
MIDDLE	0.027	-
HIGH	0.028	-

NOTE: 1. The worst value of each battery has been marked by boldface.

2. After pre-testing, 1 time slot is the worst to do the final test.

PART OF ASSESSMENT	HEAD POSITION			
COMMUNICATION MODE	PCS1900			
	MEASURED VALUE OF 1g SAR (W/kg)			
	RIGHT		LEFT	
CHANNEL	CHEEK	TILT	CHEEK	TILT
LOW	0.207	0.210	0.400	0.370
MIDDLE	0.232	0.239	0.437	0.412
HIGH	0.179	0.193	0.323	0.326

NOTE: The worst value of each battery has been marked by boldface.

PART OF ASSESSMENT	BODY POSITION			
COMMUNICATION MODE	GPRS1900			
	MEASURED VALUE OF 1g SAR (W/kg)			
	1 TIME SLOT	2 TIME SLOTS	3 TIME SLOTS	4 TIME SLOTS
LOW	-	0.063	-	-
MIDDLE	0.061	0.077	0.077	0.073
HIGH	-	0.067	-	-

NOTE: 1. The worst value of each battery has been marked by boldface.

2. After pre-testing, 2 time slots is the worst to do the final test.

PART OF ASSESSMENT	BODY POSITION	
COMMUNICATION MODE	E-GPRS1900	
	MEASURED VALUE OF 1g SAR (W/kg)	
	1 TIME SLOT	2 TIME SLOTS
LOW	-	0.061
MIDDLE	0.058	0.074
HIGH	-	0.063

NOTE: 1. The worst value of each battery has been marked by boldface.

2. After pre-testing, 2 time slots is the worst to do the final test.



PART OF ASSESSMENT	HEAD POSITION							
COMMUNICATION MODE	WLAN (2.4GHz)							
	DSSS				OFDM			
	MEASURED VALUE OF 1g SAR (W/kg)							
	RIGHT		LEFT		RIGHT		LEFT	
CHANNEL	CHEEK	TILT	CHEEK	TILT	CHEEK	TILT	CHEEK	TILT
LOW	0.253	0.176	0.181	0.151	0.195	0.123	0.134	0.096
MIDDLE	0.402	0.319	0.265	0.215	0.303	0.255	0.207	0.219
HIGH	0.208	0.154	0.151	0.133	0.191	0.129	0.125	0.122

NOTE: The worst value of each battery has been marked by boldface.

PART OF ASSESSMENT	BODY POSITION	
COMMUNICATION MODE	WLAN (2.4GHz)	
	DSSS	OFDM
CHANNEL	MEASURED VALUE OF 1g SAR (W/kg)	
LOW	0.033	0.029
MIDDLE	0.053	0.040
HIGH	0.028	0.025

NOTE: The worst value of each battery has been marked by boldface.



PART OF ASSESSMENT	HEAD POSITION			
COMMUNICATION MODE	BLUETOOTH			
	MEASURED VALUE OF 1g SAR (W/kg)			
	RIGHT		LEFT	
CHANNEL	CHEEK	TILT	CHEEK	TILT
LOW	0.0008710	0.0003030	0.0041700	0.0010100
MIDDLE	0.0005500	0.0001820	0.0010600	0.0005050
HIGH	0.0000783	0.0004350	0.0019600	0.0015900

NOTE: The worst value of each battery has been marked by boldface.

PART OF ASSESSMENT	BODY POSITION
COMMUNICATION MODE	BLUETOOTH
CHANNEL	MEASURED VALUE OF 1g SAR (W/kg)
LOW	0.0000640
MIDDLE	0.0001490
HIGH	0.0002340

NOTE: The worst value of each battery has been marked by boldface.



PART OF ASSESSMENT	HEAD POSITION			
COMMUNICATION MODE	WLAN (5.0GHz)			
	MEASURED VALUE OF 1g SAR (W/kg)			
	RIGHT		LEFT	
CHANNEL	CHEEK	TILT	CHEEK	TILT
36	0.761	0.895	0.980	1.030
48	0.928	1.010	1.050	1.150
52	0.910	1.030	1.080	1.170
64	0.922	1.060	1.090	1.290
149	0.316	0.349	0.366	0.478
157	0.382	0.470	0.485	0.581
165	0.471	0.544	0.563	0.671

NOTE: The worst value of each battery has been marked by boldface.

PART OF ASSESSMENT	BODY POSITION
COMMUNICATION MODE	WLAN (5.0GHz)
CHANNEL	MEASURED VALUE OF 1g SAR (W/kg)
36	0.166
48	0.219
52	0.209
64	0.181
149	0.058
157	0.056
165	0.110

NOTE: The worst value of each battery has been marked by boldface.

TEST RESULT OF MULTI-BANDS CO-LOCATED ASSESSMENT:

The worst situation has been chosen from the above table, and make up 12 combinations for the test of co-location listed as below.

TEST MODE	DESCRIPTION	MEASURED VALUE OF 1g SAR (W/kg)
41	GSM850 high channel + WLAN (2.4GHz) middle channel + Bluetooth low channel	0.402
42	GSM850 high channel + WLAN (5.0GHz) channel 48 + Bluetooth high channel	1.060
43	GSM850 high channel + WLAN (2.4GHz) middle channel + Bluetooth high channel	0.375
44	GSM850 high channel + WLAN (5.0GHz) channel 64 + Bluetooth high channel	1.290
45	PCS1900 middle channel + WLAN (2.4GHz) middle channel + Bluetooth low channel	0.402
46	PCS1900 middle channel + WLAN (5.0GHz) channel 64 + Bluetooth high channel	1.060
47	PCS1900 middle channel + WLAN (2.4GHz) middle channel + Bluetooth low channel	0.437
48	PCS1900 middle channel + WLAN (5.0GHz) channel 64 + Bluetooth high channel	1.290
49	GPRS850 high channel + WLAN (2.4GHz) middle channel + Bluetooth high channel	0.111
50	GPRS850 high channel + WLAN (5.0GHz) channel 48 + Bluetooth high channel	0.219
51	GPRS1900 middle channel + WLAN (2.4GHz) middle channel + Bluetooth high channel	0.077
52	GPRS1900 middle channel + WLAN (5.0GHz) channel 48 + Bluetooth high channel	0.219



5. TEST RESULTS

5.1 TEST PROCEDURES

For mobile phone functions:

The EUT makes a phone call to the GSM base station. Establish the simulation communication configuration rather the actual communication. Then the EUT could continuous the transmission mode. Adjust the PCL of the base station could controlled the EUT to transmitted the maximum output power. The base station also could control the transmission channel.

For WLAN, bluetooth functions:

Use the software to control the EUT channel and transmission power. Then record the conducted power before the testing. Place the EUT to the specific test location. After the testing, must writing down the conducted power of the EUT into the report.

The SAR value was calculated via the 3D spline interpolation algorithm that has been implemented in the software of DASY4 SAR measurement system manufactured and calibrated by SPEAG. According to the IEEE 1528, the recommended procedure for assessing the peak spatial-average SAR value consists of the following steps:

- Power reference measurement
- Verification of the power reference measurement
- Area scan
- Zoom scan
- Power reference measurement

The area scan with 15mm x 15mm grid was performed for the highest spatial SAR location. The zoon scan with 30mm x 30mm x 30mm volume was performed for SAR value averaged over 1g and 10g spatial volumes.



In the zoon scan, the distance between the measurement point at the probe sensor location (geometric center behind the probe tip) and the phantom surface is 4.0 mm and maintained at a constant distance of ± 1.0 mm during a zoon scan to determine peak SAR locations. The distance is 4mm between the first measurement point and the bottom surface of the phantom. The secondary measurement point to the bottom surface of the phantom is with 9mm separation distance. The cube size is 7 x 7 x 7 points consist of 343 points and the grid space is 5mm.

The measurement time is 0.5 s at each point of the zoon scan. The probe boundary effect compensation shall be applied during the SAR test. Because of the tip of the probe to the Phantom surface separated distances are longer than half a tip probe diameter.

In the area scan, the separation distance is 4mm between the each measurement point and the phantom surface. The scan size shall be included the transmission portion of the EUT. The measurement time is the same as the zoon scan. At last the reference power drift shall be less than $\pm 5\%$.

5.2 MEASURED SAR RESULTS

GSM850 BAND RIGHT HEAD POSITION

EUT		EDA (Enterprise Digital Assistant)			MODEL		MC7094	
ENVIRONMENTAL CONDITION		Air Temperature : 23.3°C, Liquid Temperature : 22.1°C Humidity : 57%RH						
TESTED BY		Sam Onn			DATE		Oct. 14, 2005	
CHAN.	FREQ. (MHz)	MODE	CONDUCTED POWER (W)		POWER DRIFT (%)	DEVICE USE POWER	DEVICE TEST POSITION MODE	MEASURED 1g SAR (W/kg)
			BEGIN TEST	AFTER TEST				
128	824.20 (Low)	GSM	1.416	1.388	-1.96	Standard Battery	1	0.291
190	836.60 (Mid.)	GSM	1.483	1.455	-1.92	Standard Battery	1	0.305
251	848.80 (High)	GSM	1.626	1.608	-1.11	Standard Battery	1	0.342
128	824.20 (Low)	GSM	1.416	1.399	-1.24	Standard Battery	2	0.274
190	836.60 (Mid.)	GSM	1.483	1.467	-1.08	Standard Battery	2	0.287
251	848.80 (High)	GSM	1.626	1.610	-1.01	Standard Battery	2	0.322

NOTE:

1. Test configuration of each mode is described in section 3.
2. In this testing, the limit for General Population Spatial Peak averaged over **1g, 1.6W/kg**, is applied.
3. Please see the Appendix A for the data, and Appendix E for the photo of the test configuration.
4. The variation of the EUT conducted power measured before and after SAR testing should not over 5%.



GSM850 BAND LEFT HEAD POSITION

EUT		EDA (Enterprise Digital Assistant)			MODEL		MC7094	
ENVIRONMENTAL CONDITION		Air Temperature : 23.3°C, Liquid Temperature : 22.1°C Humidity : 57%RH						
TESTED BY		Sam Onn			DATE		Oct. 14, 2005	
CHAN.	FREQ. (MHz)	MODE	CONDUCTED POWER (W)		POWER DRIFT (%)	DEVICE USE POWER	DEVICE TEST POSITION MODE	MEASURED 1g SAR (W/kg)
			BEGIN TEST	AFTER TEST				
128	824.20 (Low)	GSM	1.416	1.410	-0.43	Standard Battery	3	0.310
190	836.60 (Mid.)	GSM	1.483	1.479	-0.28	Standard Battery	3	0.324
251	848.80 (High)	GSM	1.626	1.616	-0.59	Standard Battery	3	0.360
128	824.20 (Low)	GSM	1.416	1.411	-0.36	Standard Battery	4	0.322
190	836.60 (Mid.)	GSM	1.483	1.470	-0.87	Standard Battery	4	0.339
251	848.80 (High)	GSM	1.626	1.597	-1.76	Standard Battery	4	0.375

NOTE:

1. Test configuration of each mode is described in section 3.
2. In this testing, the limit for General Population Spatial Peak averaged over **1g, 1.6W/kg**, is applied.
3. Please see the Appendix A for the data, and Appendix E for the photo of the test configuration.
4. The variation of the EUT conducted power measured before and after SAR testing should not over 5%.

GPRS850 BAND BODY POSITION

EUT		EDA (Enterprise Digital Assistant)			MODEL		MC7094	
ENVIRONMENTAL CONDITION		Air Temperature : 22.9°C, Liquid Temperature : 22.0°C Humidity : 63%RH						
TESTED BY		Sam Onn			DATE		Oct. 15, 2005	
CHAN.	FREQ. (MHz)	MODE	CONDUCTED POWER (W)		POWER DRIFT (%)	DEVICE USE POWER	DEVICE TEST POSITION MODE	MEASURED 1g SAR (W/kg)
			BEGIN TEST	AFTER TEST				
190	836.60 (Mid.)	GPRS with 1 time slot	0.589	0.580	-1.58	Standard Battery	5	0.086
190	836.60 (Mid.)	GPRS with 3 time slots	0.541	0.534	-1.38	Standard Battery	6	0.104
190	836.60 (Mid.)	GPRS with 4 time slots	0.383	0.377	-1.48	Standard Battery	7	0.095
128	824.20 (Low)	GPRS with 2 time slots	0.522	0.521	-0.28	Standard Battery	8	0.099
190	836.60 (Mid.)	GPRS with 2 time slots	0.577	0.574	-0.59	Standard Battery	8	0.107
251	848.80 (High)	GPRS with 2 time slots	0.622	0.620	-0.36	Standard Battery	8	0.111

NOTE:

1. Test configuration of each mode is described in section 3.
2. In this testing, the limit for General Population Spatial Peak averaged over **1g, 1.6W/kg**, is applied.
3. Please see the Appendix A for the data, and Appendix E for the photo of the test configuration.
4. The variation of the EUT conducted power measured before and after SAR testing should not over 5%.



E-GPRS850 BAND BODY POSITION

EUT		EDA (Enterprise Digital Assistant)		MODEL		MC7094		
ENVIRONMENTAL CONDITION		Air Temperature : 22.9°C, Liquid Temperature : 22.0°C Humidity : 63%RH						
TESTED BY		Sam Onn			DATE		Oct. 15, 2005	
CHAN.	FREQ. (MHz)	MODE	CONDUCTED POWER (W)		POWER DRIFT (%)	DEVICE USE POWER	DEVICE TEST POSITION MODE	MEASURED 1g SAR (W/kg)
			BEGIN TEST	AFTER TEST				
128	824.20 (Low)	E-GPRS with 2 time slots	0.345	0.341	-1.10	Standard Battery	9	0.018
128	824.20 (Low)	E-GPRS with 1 time slot	0.489	0.478	-2.18	Standard Battery	10	0.026
190	836.60 (Mid.)	E-GPRS with 1 time slot	0.536	0.524	-2.26	Standard Battery	10	0.027
251	848.80 (High)	E-GPRS with 1 time slot	0.574	0.567	-1.28	Standard Battery	10	0.028

NOTE:

1. Test configuration of each mode is described in section 3.
2. In this testing, the limit for General Population Spatial Peak averaged over **1g, 1.6W/kg**, is applied.
3. Please see the Appendix A for the data, and Appendix E for the photo of the test configuration.
4. The variation of the EUT conducted power measured before and after SAR testing should not over 5%.



PCS1900 BAND RIGHT HEAD POSITION

EUT		EDA (Enterprise Digital Assistant)			MODEL		MC7094	
ENVIRONMENTAL CONDITION		Air Temperature : 23.1°C, Liquid Temperature : 21.8°C Humidity : 62%RH						
TESTED BY		Sam Onn			DATE		Oct. 20, 2005	
CHAN.	FREQ. (MHz)	MODE	CONDUCTED POWER (W)		POWER DRIFT (%)	DEVICE USE POWER	DEVICE TEST POSITION MODE	MEASURED 1g SAR (W/kg)
			BEGIN TEST	AFTER TEST				
512	1850.20 (Low)	GSM	0.857	0.841	-1.92	Standard Battery	11	0.207
661	1880.00 (Mid.)	GSM	0.836	0.827	-1.11	Standard Battery	11	0.232
810	1909.80 (High)	GSM	0.817	0.807	-1.24	Standard Battery	11	0.179
512	1850.20 (Low)	GSM	0.857	0.848	-1.08	Standard Battery	12	0.210
661	1880.00 (Mid.)	GSM	0.836	0.828	-1.01	Standard Battery	12	0.239
810	1909.80 (High)	GSM	0.817	0.806	-1.37	Standard Battery	12	0.193

NOTE:

1. Test configuration of each mode is described in section 3.
2. In this testing, the limit for General Population Spatial Peak averaged over **1g, 1.6W/kg**, is applied.
3. Please see the Appendix A for the data, and Appendix E for the photo of the test configuration.
4. The variation of the EUT conducted power measured before and after SAR testing should not over 5%.

PCS1900 BAND LEFT HEAD POSITION

EUT		EDA (Enterprise Digital Assistant)			MODEL		MC7094	
ENVIRONMENTAL CONDITION		Air Temperature : 23.1°C, Liquid Temperature : 21.8°C Humidity : 62%RH						
TESTED BY		Sam Onn			DATE		Oct. 20, 2005	
CHAN.	FREQ. (MHz)	MODE	CONDUCTED POWER (W)		POWER DRIFT (%)	DEVICE USE POWER	DEVICE TEST POSITION MODE	MEASURED 1g SAR (W/kg)
			BEGIN TEST	AFTER TEST				
512	1850.20 (Low)	GSM	0.857	0.844	-1.51	Standard Battery	13	0.400
661	1880.00 (Mid.)	GSM	0.836	0.825	-1.36	Standard Battery	13	0.437
810	1909.80 (High)	GSM	0.817	0.804	-1.61	Standard Battery	13	0.323
512	1850.20 (Low)	GSM	0.857	0.851	-0.75	Standard Battery	14	0.370
661	1880.00 (Mid.)	GSM	0.836	0.834	-0.29	Standard Battery	14	0.412
810	1909.80 (High)	GSM	0.817	0.796	-2.60	Standard Battery	14	0.326

NOTE:

1. Test configuration of each mode is described in section 3.
2. In this testing, the limit for General Population Spatial Peak averaged over **1g, 1.6W/kg**, is applied.
3. Please see the Appendix A for the data, and Appendix E for the photo of the test configuration.
4. The variation of the EUT conducted power measured before and after SAR testing should not over 5%.

GPRS1900 BAND BODY POSITION

EUT		EDA (Enterprise Digital Assistant)			MODEL		MC7094	
ENVIRONMENTAL CONDITION		Air Temperature : 22.6°C, Liquid Temperature : 21.7°C Humidity : 63%RH						
TESTED BY		Sam Onn			DATE		Oct. 21, 2005	
CHAN.	FREQ. (MHz)	MODE	CONDUCTED POWER (W)		POWER DRIFT (%)	DEVICE USE POWER	DEVICE TEST POSITION MODE	MEASURED 1g SAR (W/kg)
			BEGIN TEST	AFTER TEST				
661	1880.00 (Mid.)	GPRS with 1 time slot	0.824	0.809	-1.76	Standard Battery	15	0.061
661	1880.00 (Mid.)	GPRS with 3 time slots	0.352	0.346	-1.82	Standard Battery	16	0.077
661	1880.00 (Mid.)	GPRS with 4 time slots	0.239	0.236	-1.30	Standard Battery	17	0.073
512	1850.20 (Low)	GPRS with 2 time slots	0.535	0.522	-2.45	Standard Battery	18	0.063
661	1880.00 (Mid.)	GPRS with 2 time slots	0.524	0.503	-3.96	Standard Battery	18	0.077
810	1909.80 (High)	GPRS with 2 time slots	0.521	0.507	-2.65	Standard Battery	18	0.067

NOTE:

1. Test configuration of each mode is described in section 3.
2. In this testing, the limit for General Population Spatial Peak averaged over **1g, 1.6W/kg**, is applied.
3. Please see the Appendix A for the data, and Appendix E for the photo of the test configuration.
4. The variation of the EUT conducted power measured before and after SAR testing should not over 5%.



E-GPRS1900 BAND BODY POSITION

EUT		EDA (Enterprise Digital Assistant)		MODEL		MC7094		
ENVIRONMENTAL CONDITION		Air Temperature : 22.6°C, Liquid Temperature : 21.7°C Humidity : 63%RH						
TESTED BY		Sam Onn			DATE		Oct. 21, 2005	
CHAN.	FREQ. (MHz)	MODE	CONDUCTED POWER (W)		POWER DRIFT (%)	DEVICE USE POWER	DEVICE TEST POSITION MODE	MEASURED 1g SAR (W/kg)
			BEGIN TEST	AFTER TEST				
661	1880.00 (Mid.)	E-GPRS with 1 time slot	0.388	0.382	-1.65	Standard Battery	19	0.058
512	1850.20 (Low)	E-GPRS with 2 time slots	0.246	0.241	-1.91	Standard Battery	20	0.061
661	1880.00 (Mid.)	E-GPRS with 2 time slots	0.257	0.252	-2.13	Standard Battery	20	0.074
810	1909.80 (High)	E-GPRS with 2 time slots	0.277	0.272	-1.76	Standard Battery	20	0.063

NOTE:

1. Test configuration of each mode is described in section 3.
2. In this testing, the limit for General Population Spatial Peak averaged over **1g, 1.6W/kg**, is applied.
3. Please see the Appendix A for the data, and Appendix E for the photo of the test configuration.
4. The variation of the EUT conducted power measured before and after SAR testing should not over 5%.

WLAN (2.4GHz) BAND RIGHT HEAD POSITION

EUT		EDA (Enterprise Digital Assistant)			MODEL		MC7094	
ENVIRONMENTAL CONDITION		Air Temperature : 22.5°C, Liquid Temperature : 21.7°C Humidity : 58%RH						
TESTED BY		Sam Onn			DATE		Oct. 11, 2005	
CHAN.	FREQ. (MHz)	MODE	CONDUCTED POWER (mW)		POWER DRIFT (%)	DEVICE USE POWER	DEVICE TEST POSITION MODE	MEASURED 1g SAR (W/kg)
			BEGIN TEST	AFTER TEST				
1	2412.00 (Low)	DSSS	22.439	21.909	-2.36	Standard Battery	21	0.253
6	2437.00 (Mid.)	DSSS	40.087	39.021	-2.66	Standard Battery	21	0.402
11	2462.00 (High)	DSSS	25.177	24.429	-2.97	Standard Battery	21	0.208
1	2412.00 (Low)	DSSS	22.439	21.961	-2.13	Standard Battery	22	0.176
6	2437.00 (Mid.)	DSSS	40.087	39.077	-2.52	Standard Battery	22	0.319
11	2462.00 (High)	DSSS	25.177	24.558	-2.46	Standard Battery	22	0.154

NOTE:

1. Test configuration of each mode is described in section 3.
2. In this testing, the limit for General Population Spatial Peak averaged over **1g, 1.6W/kg**, is applied.
3. Please see the Appendix A for the data, and Appendix E for the photo of the test configuration.
4. The variation of the EUT conducted power measured before and after SAR testing should not over 5%.

WLAN (2.4GHz) BAND LEFT HEAD POSITION

EUT		EDA (Enterprise Digital Assistant)			MODEL		MC7094	
ENVIRONMENTAL CONDITION		Air Temperature : 22.5°C, Liquid Temperature : 21.7°C Humidity : 58%RH						
TESTED BY		Sam Onn			DATE		Oct. 11, 2005	
CHAN.	FREQ. (MHz)	MODE	CONDUCTED POWER (mW)		POWER DRIFT (%)	DEVICE USE POWER	DEVICE TEST POSITION MODE	MEASURED 1g SAR (W/kg)
			BEGIN TEST	AFTER TEST				
1	2412.00 (Low)	DSSS	22.439	22.159	-1.25	Standard Battery	23	0.181
6	2437.00 (Mid.)	DSSS	40.087	39.598	-1.22	Standard Battery	23	0.265
11	2462.00 (High)	DSSS	25.177	24.809	-1.46	Standard Battery	23	0.151
1	2412.00 (Low)	DSSS	22.439	22.031	-1.82	Standard Battery	24	0.151
6	2437.00 (Mid.)	DSSS	40.087	39.393	-1.73	Standard Battery	24	0.215
11	2462.00 (High)	DSSS	25.177	24.842	-1.33	Standard Battery	24	0.133

NOTE:

1. Test configuration of each mode is described in section 3.
2. In this testing, the limit for General Population Spatial Peak averaged over **1g, 1.6W/kg**, is applied.
3. Please see the Appendix A for the data, and Appendix E for the photo of the test configuration.
4. The variation of the EUT conducted power measured before and after SAR testing should not over 5%.

WLAN (2.4GHz) BAND BODY POSITION

EUT		EDA (Enterprise Digital Assistant)			MODEL		MC7094	
ENVIRONMENTAL CONDITION		Air Temperature : 22.8°C, Liquid Temperature : 21.7°C Humidity : 61%RH						
TESTED BY		Sam Onn			DATE		Oct. 13, 2005	
CHAN.	FREQ. (MHz)	MODE	CONDUCTED POWER (mW)		POWER DRIFT (%)	DEVICE USE POWER	DEVICE TEST POSITION MODE	MEASURED 1g SAR (W/kg)
			BEGIN TEST	AFTER TEST				
1	2412.00 (Low)	DSSS	22.439	22.311	-0.57	Standard Battery	25	0.033
6	2437.00 (Mid.)	DSSS	40.087	39.903	-0.46	Standard Battery	25	0.053
11	2462.00 (High)	DSSS	25.177	25.081	-0.38	Standard Battery	25	0.028

NOTE:

1. Test configuration of each mode is described in section 3.
2. In this testing, the limit for General Population Spatial Peak averaged over **1g, 1.6W/kg**, is applied.
3. Please see the Appendix A for the data, and Appendix E for the photo of the test configuration.
4. The variation of the EUT conducted power measured before and after SAR testing should not over 5%.



WLAN (2.4GHz) BAND RIGHT HEAD POSITION

EUT		EDA (Enterprise Digital Assistant)			MODEL		MC7094	
ENVIRONMENTAL CONDITION		Air Temperature : 22.5°C, Liquid Temperature : 21.7°C Humidity : 58%RH						
TESTED BY		Sam Onn			DATE		Oct. 11, 2005	
CHAN.	FREQ. (MHz)	MODE	CONDUCTED POWER (mW)		POWER DRIFT (%)	DEVICE USE POWER	DEVICE TEST POSITION MODE	MEASURED 1g SAR (W/kg)
			BEGIN TEST	AFTER TEST				
1	2412.00 (Low)	OFDM	25.527	24.822	-2.76	Standard Battery	26	0.195
6	2437.00 (Mid.)	OFDM	44.978	44.006	-2.16	Standard Battery	26	0.303
11	2462.00 (High)	OFDM	25.177	24.525	-2.59	Standard Battery	26	0.191
1	2412.00 (Low)	OFDM	25.527	25.185	-1.34	Standard Battery	27	0.123
6	2437.00 (Mid.)	OFDM	44.978	44.416	-1.25	Standard Battery	27	0.255
11	2462.00 (High)	OFDM	25.177	24.847	-1.31	Standard Battery	27	0.129

NOTE:

1. Test configuration of each mode is described in section 3.
2. In this testing, the limit for General Population Spatial Peak averaged over **1g, 1.6W/kg**, is applied.
3. Please see the Appendix A for the data, and Appendix E for the photo of the test configuration.
4. The variation of the EUT conducted power measured before and after SAR testing should not over 5%.



WLAN (2.4GHz) BAND LEFT HEAD POSITION

EUT		EDA (Enterprise Digital Assistant)		MODEL		MC7094		
ENVIRONMENTAL CONDITION		Air Temperature : 22.5°C, Liquid Temperature : 21.7°C Humidity : 58%RH						
TESTED BY		Sam Onn			DATE		Oct. 11, 2005	
CHAN.	FREQ. (MHz)	MODE	CONDUCTED POWER (mW)		POWER DRIFT (%)	DEVICE USE POWER	DEVICE TEST POSITION MODE	MEASURED 1g SAR (W/kg)
			BEGIN TEST	AFTER TEST				
1	2412.00 (Low)	OFDM	25.527	24.925	-2.36	Standard Battery	28	0.134
6	2437.00 (Mid.)	OFDM	44.978	44.128	-1.89	Standard Battery	28	0.207
11	2462.00 (High)	OFDM	25.177	24.510	-2.65	Standard Battery	28	0.125
1	2412.00 (Low)	OFDM	25.527	25.172	-1.39	Standard Battery	29	0.096
6	2437.00 (Mid.)	OFDM	44.978	44.438	-1.20	Standard Battery	29	0.219
11	2462.00 (High)	OFDM	25.177	24.641	-2.13	Standard Battery	29	0.122

NOTE:

1. Test configuration of each mode is described in section 3.
2. In this testing, the limit for General Population Spatial Peak averaged over **1g, 1.6W/kg**, is applied.
3. Please see the Appendix A for the data, and Appendix E for the photo of the test configuration.
4. The variation of the EUT conducted power measured before and after SAR testing should not over 5%.



WLAN (2.4GHz) BAND BODY POSITION

EUT		EDA (Enterprise Digital Assistant)			MODEL		MC7094	
ENVIRONMENTAL CONDITION		Air Temperature : 22.8°C, Liquid Temperature : 21.7°C Humidity : 61%RH						
TESTED BY		Sam Onn			DATE		Oct. 13, 2005	
CHAN.	FREQ. (MHz)	MODE	CONDUCTED POWER (mW)		POWER DRIFT (%)	DEVICE USE POWER	DEVICE TEST POSITION MODE	MEASURED 1g SAR (W/kg)
			BEGIN TEST	AFTER TEST				
1	2412.00 (Low)	OFDM	25.527	24.743	-3.07	Standard Battery	30	0.029
6	2437.00 (Mid.)	OFDM	44.978	43.818	-2.58	Standard Battery	30	0.040
11	2462.00 (High)	OFDM	25.177	24.391	-3.12	Standard Battery	30	0.025

NOTE:

1. Test configuration of each mode is described in section 3.
2. In this testing, the limit for General Population Spatial Peak averaged over **1g, 1.6W/kg**, is applied.
3. Please see the Appendix A for the data, and Appendix E for the photo of the test configuration.
4. The variation of the EUT conducted power measured before and after SAR testing should not over 5%.

BLUETOOTH BAND RIGHT HEAD POSITION

EUT		EDA (Enterprise Digital Assistant)			MODEL		MC7094	
ENVIRONMENTAL CONDITION		Air Temperature : 22.4°C, Liquid Temperature : 21.5°C Humidity : 60%RH						
TESTED BY		Sam Onn			DATE		Oct. 12, 2005	
CHAN.	FREQ. (MHz)	MODE	CONDUCTED POWER (mW)		POWER DRIFT (%)	DEVICE USE POWER	DEVICE TEST POSITION MODE	MEASURED 1g SAR (W/kg)
			BEGIN TEST	AFTER TEST				
0	2402.00 (Low)	GFSK	0.857	0.830	-3.10	Standard Battery	31	0.0008710
39	2441.00 (Mid.)	GFSK	0.986	0.958	-2.87	Standard Battery	31	0.0005500
78	2480.00 (High)	GFSK	1.072	1.051	-1.96	Standard Battery	31	0.0000783
0	2402.00 (Low)	GFSK	0.857	0.846	-1.24	Standard Battery	32	0.0003030
39	2441.00 (Mid.)	GFSK	0.986	0.970	-1.67	Standard Battery	32	0.0001820
78	2480.00 (High)	GFSK	1.072	1.050	-2.05	Standard Battery	32	0.0004350

NOTE:

1. Test configuration of each mode is described in section 3.
2. In this testing, the limit for General Population Spatial Peak averaged over **1g, 1.6W/kg**, is applied.
3. Please see the Appendix A for the data, and Appendix E for the photo of the test configuration.
4. The variation of the EUT conducted power measured before and after SAR testing should not over 5%.



BLUETOOTH BAND LEFT HEAD POSITION

EUT		EDA (Enterprise Digital Assistant)			MODEL		MC7094	
ENVIRONMENTAL CONDITION		Air Temperature : 22.4°C, Liquid Temperature : 21.5°C Humidity : 60%RH						
TESTED BY		Sam Onn			DATE		Oct. 12, 2005	
CHAN.	FREQ. (MHz)	MODE	CONDUCTED POWER (mW)		POWER DRIFT (%)	DEVICE USE POWER	DEVICE TEST POSITION MODE	MEASURED 1g SAR (W/kg)
			BEGIN TEST	AFTER TEST				
0	2402.00 (Low)	GFSK	0.857	0.841	-1.86	Standard Battery	33	0.0041700
39	2441.00 (Mid.)	GFSK	0.986	0.963	-2.34	Standard Battery	33	0.0010600
78	2480.00 (High)	GFSK	1.072	1.039	-3.05	Standard Battery	33	0.0019600
0	2402.00 (Low)	GFSK	0.857	0.830	-3.19	Standard Battery	34	0.0010100
39	2441.00 (Mid.)	GFSK	0.986	0.950	-3.64	Standard Battery	34	0.0005050
78	2480.00 (High)	GFSK	1.072	1.049	-2.16	Standard Battery	34	0.0015900

NOTE:

1. Test configuration of each mode is described in section 3.
2. In this testing, the limit for General Population Spatial Peak averaged over **1g, 1.6W/kg**, is applied.
3. Please see the Appendix A for the data, and Appendix E for the photo of the test configuration.
4. The variation of the EUT conducted power measured before and after SAR testing should not over 5%.

BLUETOOTH BAND BODY POSITION

EUT		EDA (Enterprise Digital Assistant)			MODEL		MC7094	
ENVIRONMENTAL CONDITION		Air Temperature : 22.8°C, Liquid Temperature : 21.7°C Humidity : 61%RH						
TESTED BY		Sam Onn			DATE		Oct. 13, 2005	
CHAN.	FREQ. (MHz)	MODE	CONDUCTED POWER (mW)		POWER DRIFT (%)	DEVICE USE POWER	DEVICE TEST POSITION MODE	MEASURED 1g SAR (W/kg)
			BEGIN TEST	AFTER TEST				
0	2402.00 (Low)	GFSK	0.857	0.841	-1.85	Standard Battery	35	0.0000640
39	2441.00 (Mid.)	GFSK	0.986	0.967	-1.94	Standard Battery	35	0.0001490
78	2480.00 (High)	GFSK	1.072	1.050	-2.03	Standard Battery	35	0.0002340

NOTE:

1. Test configuration of each mode is described in section 3.
2. In this testing, the limit for General Population Spatial Peak averaged over **1g, 1.6W/kg**, is applied.
3. Please see the Appendix A for the data, and Appendix E for the photo of the test configuration.
4. The variation of the EUT conducted power measured before and after SAR testing should not over 5%.

WLAN (5.0GHz) BAND RIGHT HEAD POSITION

EUT		EDA (Enterprise Digital Assistant)			MODEL		MC7094	
ENVIRONMENTAL CONDITION		Air Temperature : 23.1°C, Liquid Temperature : 22.2°C Humidity : 58%RH						
TESTED BY		Sam Onn			DATE		Oct. 22, 2005	
CHAN.	FREQ. (MHz)	MODE	CONDUCTED POWER (mW)		POWER DRIFT (%)	DEVICE USE POWER	DEVICE TEST POSITION MODE	MEASURED 1g SAR (W/kg)
			BEGIN TEST	AFTER TEST				
36	5180.00	OFDM	26.977	25.963	-3.76	Standard Battery	36	0.761
48	5240.00	OFDM	19.543	18.746	-4.08	Standard Battery	36	0.928
52	5260.00	OFDM	18.450	18.046	-2.19	Standard Battery	36	0.910
64	5320.00	OFDM	17.179	16.727	-2.63	Standard Battery	36	0.922
149	5745.00	OFDM	40.179	39.183	-2.48	Standard Battery	36	0.316
157	5785.00	OFDM	40.458	39.260	-2.96	Standard Battery	36	0.382
165	5825.00	OFDM	40.272	39.519	-1.87	Standard Battery	36	0.471

NOTE:

1. Test configuration of each mode is described in section 3.
2. In this testing, the limit for General Population Spatial Peak averaged over **1g, 1.6W/kg**, is applied.
3. Please see the Appendix A for the data, and Appendix E for the photo of the test configuration.
4. The variation of the EUT conducted power measured before and after SAR testing should not over 5%.

WLAN (5.0GHz) BAND RIGHT HEAD POSITION

EUT		EDA (Enterprise Digital Assistant)			MODEL		MC7094	
ENVIRONMENTAL CONDITION		Air Temperature : 23.1°C, Liquid Temperature : 22.2°C Humidity : 58%RH						
TESTED BY		Sam Onn			DATE		Oct. 22, 2005	
CHAN.	FREQ. (MHz)	MODE	CONDUCTED POWER (mW)		POWER DRIFT (%)	DEVICE USE POWER	DEVICE TEST POSITION MODE	MEASURED 1g SAR (W/kg)
			BEGIN TEST	AFTER TEST				
36	5180.00	OFDM	26.977	26.562	-1.54	Standard Battery	37	0.895
48	5240.00	OFDM	19.543	19.166	-1.93	Standard Battery	37	1.010
52	5260.00	OFDM	18.450	18.018	-2.34	Standard Battery	37	1.030
64	5320.00	OFDM	17.179	16.737	-2.57	Standard Battery	37	1.060
149	5745.00	OFDM	40.179	39.102	-2.68	Standard Battery	37	0.349
157	5785.00	OFDM	40.458	39.297	-2.87	Standard Battery	37	0.470
165	5825.00	OFDM	40.272	39.483	-1.96	Standard Battery	37	0.544

NOTE:

1. Test configuration of each mode is described in section 3.
2. In this testing, the limit for General Population Spatial Peak averaged over **1g, 1.6W/kg**, is applied.
3. Please see the Appendix A for the data, and Appendix E for the photo of the test configuration.
4. The variation of the EUT conducted power measured before and after SAR testing should not over 5%.

WLAN (5.0GHz) BAND LEFT HEAD POSITION

EUT		EDA (Enterprise Digital Assistant)			MODEL		MC7094	
ENVIRONMENTAL CONDITION		Air Temperature : 23.1°C, Liquid Temperature : 22.2°C Humidity : 58%RH						
TESTED BY		Sam Onn			DATE		Oct. 22, 2005	
CHAN.	FREQ. (MHz)	MODE	CONDUCTED POWER (mW)		POWER DRIFT (%)	DEVICE USE POWER	DEVICE TEST POSITION MODE	MEASURED 1g SAR (W/kg)
			BEGIN TEST	AFTER TEST				
36	5180.00	OFDM	26.977	26.910	-0.25	Standard Battery	38	0.980
48	5240.00	OFDM	19.543	19.471	-0.37	Standard Battery	38	1.050
52	5260.00	OFDM	18.450	18.323	-0.69	Standard Battery	38	1.080
64	5320.00	OFDM	17.179	17.038	-0.82	Standard Battery	38	1.090
149	5745.00	OFDM	40.179	39.717	-1.15	Standard Battery	38	0.366
157	5785.00	OFDM	40.458	39.977	-1.19	Standard Battery	38	0.485
165	5825.00	OFDM	40.272	39.608	-1.65	Standard Battery	38	0.563

NOTE:

1. Test configuration of each mode is described in section 3.
2. In this testing, the limit for General Population Spatial Peak averaged over **1g, 1.6W/kg**, is applied.
3. Please see the Appendix A for the data, and Appendix E for the photo of the test configuration.
4. The variation of the EUT conducted power measured before and after SAR testing should not over 5%.

WLAN (5.0GHz) BAND LEFT HEAD POSITION

EUT		EDA (Enterprise Digital Assistant)			MODEL		MC7094	
ENVIRONMENTAL CONDITION		Air Temperature : 23.1°C, Liquid Temperature : 22.2°C Humidity : 58%RH						
TESTED BY		Sam Onn			DATE		Oct. 22, 2005	
CHAN.	FREQ. (MHz)	MODE	CONDUCTED POWER (mW)		POWER DRIFT (%)	DEVICE USE POWER	DEVICE TEST POSITION MODE	MEASURED 1g SAR (W/kg)
			BEGIN TEST	AFTER TEST				
36	5180.00	OFDM	26.977	26.705	-1.01	Standard Battery	39	1.030
48	5240.00	OFDM	19.543	19.275	-1.37	Standard Battery	39	1.150
52	5260.00	OFDM	18.450	18.371	-0.43	Standard Battery	39	1.170
64	5320.00	OFDM	17.179	17.131	-0.28	Standard Battery	39	1.290
149	5745.00	OFDM	40.179	39.942	-0.59	Standard Battery	39	0.478
157	5785.00	OFDM	40.458	40.312	-0.36	Standard Battery	39	0.581
165	5825.00	OFDM	40.272	39.922	-0.87	Standard Battery	39	0.671

NOTE:

1. Test configuration of each mode is described in section 3.
2. In this testing, the limit for General Population Spatial Peak averaged over **1g, 1.6W/kg**, is applied.
3. Please see the Appendix A for the data, and Appendix E for the photo of the test configuration.
4. The variation of the EUT conducted power measured before and after SAR testing should not over 5%.

WLAN (5.0GHz) BAND BODY POSITION

EUT		EDA (Enterprise Digital Assistant)			MODEL		MC7094	
ENVIRONMENTAL CONDITION		Air Temperature : 22.5°C, Liquid Temperature : 21.3°C Humidity : 62%RH						
TESTED BY		Sam Onn			DATE		Oct. 23, 2005	
CHAN.	FREQ. (MHz)	MODE	CONDUCTED POWER (mW)		POWER DRIFT (%)	DEVICE USE POWER	DEVICE TEST POSITION MODE	MEASURED 1g SAR (W/kg)
			BEGIN TEST	AFTER TEST				
36	5180.00	OFDM	26.977	26.807	-0.63	Standard Battery	40	0.166
48	5240.00	OFDM	19.543	19.299	-1.25	Standard Battery	40	0.219
52	5260.00	OFDM	18.450	18.299	-0.82	Standard Battery	40	0.209
64	5320.00	OFDM	17.179	17.019	-0.93	Standard Battery	40	0.181
149	5745.00	OFDM	40.179	39.171	-2.51	Standard Battery	40	0.058
157	5785.00	OFDM	40.458	39.665	-1.96	Standard Battery	40	0.056
165	5825.00	OFDM	40.272	39.499	-1.92	Standard Battery	40	0.110

NOTE:

1. Test configuration of each mode is described in section 3.
2. In this testing, the limit for General Population Spatial Peak averaged over **1g, 1.6W/kg**, is applied.
3. Please see the Appendix A for the data, and Appendix E for the photo of the test configuration.
4. The variation of the EUT conducted power measured before and after SAR testing should not over 5%.



GSM850 + WLAN (2.4GHz) + BLUETOOTH RIGHT HEAD POSITION

EUT		EDA (Enterprise Digital Assistant)			MODEL		MC7094	
CHAN.	FREQ. (MHz)	MODE	CONDUCTED POWER		POWER DRIFT (%)	DEVICE USE POWER	DEVICE TEST POSITION MODE	MEASURED 1g SAR (W/kg)
			BEGIN TEST	AFTER TEST				
251	848.80 (High)	GSM	1.626W	1.608W	-1.11	Standard Battery	41	0.402
6	2437.00 (Mid.)	DSSS	40.087mW	39.021mW	-2.66			
0	2402.00 (Low)	GFSK	0.857mW	0.830mW	-3.10			

NOTE:

1. Test configuration of each mode is described in section 3.
2. In this testing, the limit for General Population Spatial Peak averaged over **1g, 1.6W/kg**, is applied.
3. Please see the Appendix A for the data, and Appendix E for the photo of the test configuration.
4. The variation of the EUT conducted power measured before and after SAR testing should not over 5%.



GSM850 + WLAN (5.0GHz) + BLUETOOTH RIGHT HEAD POSITION

EUT		EDA (Enterprise Digital Assistant)			MODEL		MC7094	
CHAN.	FREQ. (MHz)	MODE	CONDUCTED POWER		POWER DRIFT (%)	DEVICE USE POWER	DEVICE TEST POSITION MODE	MEASURED 1g SAR (W/kg)
			BEGIN TEST	AFTER TEST				
251	848.80 (High)	GSM	1.626W	1.610W	-1.01	Standard Battery	42	1.060
48	5240.00	OFDM	19.543mW	18.746mW	-4.08			
78	2480.00 (High)	GFSK	1.072mW	1.050mW	-2.05			

NOTE:

1. Test configuration of each mode is described in section 3.
2. In this testing, the limit for General Population Spatial Peak averaged over **1g, 1.6W/kg**, is applied.
3. Please see the Appendix A for the data, and Appendix E for the photo of the test configuration.
4. The variation of the EUT conducted power measured before and after SAR testing should not over 5%.



GSM850 + WLAN (2.4GHz) + BLUETOOTH LEFT HEAD POSITION

EUT		EDA (Enterprise Digital Assistant)			MODEL		MC7094	
CHAN.	FREQ. (MHz)	MODE	CONDUCTED POWER		POWER DRIFT (%)	DEVICE USE POWER	DEVICE TEST POSITION MODE	MEASURED 1g SAR (W/kg)
			BEGIN TEST	AFTER TEST				
251	848.80 (High)	GSM	1.626W	1.597W	-1.76	Standard Battery	43	0.375
6	2437.00 (Mid.)	DSSS	40.087mW	39.393mW	-1.73			
78	2480.00 (High)	GFSK	1.072mW	1.049mW	-2.16			

NOTE:

1. Test configuration of each mode is described in section 3.
2. In this testing, the limit for General Population Spatial Peak averaged over **1g, 1.6W/kg**, is applied.
3. Please see the Appendix A for the data, and Appendix E for the photo of the test configuration.
4. The variation of the EUT conducted power measured before and after SAR testing should not over 5%.



GSM850 + WLAN (5.0GHz) + BLUETOOTH LEFT HEAD POSITION

EUT		EDA (Enterprise Digital Assistant)			MODEL		MC7094	
CHAN.	FREQ. (MHz)	MODE	CONDUCTED POWER		POWER DRIFT (%)	DEVICE USE POWER	DEVICE TEST POSITION MODE	MEASURED 1g SAR (W/kg)
			BEGIN TEST	AFTER TEST				
251	848.80 (High)	GSM	1.626W	1.597W	-1.76	Standard Battery	44	1.290
64	5320.00	OFDM	17.179mW	17.131mW	-0.28			
78	2480.00 (High)	GFSK	1.072mW	1.049mW	-2.16			

NOTE:

1. Test configuration of each mode is described in section 3.
2. In this testing, the limit for General Population Spatial Peak averaged over **1g, 1.6W/kg**, is applied.
3. Please see the Appendix A for the data, and Appendix E for the photo of the test configuration.
4. The variation of the EUT conducted power measured before and after SAR testing should not over 5%.



PCS1900 + WLAN (2.4GHz) + BLUETOOTH RIGHT HEAD POSITION

EUT		EDA (Enterprise Digital Assistant)			MODEL		MC7094	
CHAN.	FREQ. (MHz)	MODE	CONDUCTED POWER		POWER DRIFT (%)	DEVICE USE POWER	DEVICE TEST POSITION MODE	MEASURED 1g SAR (W/kg)
			BEGIN TEST	AFTER TEST				
661	1880.00 (Mid.)	GSM	0.836W	0.827W	-1.11	Standard Battery	45	0.402
6	2437.00 (Mid.)	DSSS	40.087mW	39.021mW	-2.66			
0	2402.00 (Low)	GFSK	0.857mW	0.830mW	-3.10			

NOTE:

1. Test configuration of each mode is described in section 3.
2. In this testing, the limit for General Population Spatial Peak averaged over **1g, 1.6W/kg**, is applied.
3. Please see the Appendix A for the data, and Appendix E for the photo of the test configuration.
4. The variation of the EUT conducted power measured before and after SAR testing should not over 5%.



PCS1900 + WLAN (5.0GHz) + BLUETOOTH RIGHT HEAD POSITION

EUT		EDA (Enterprise Digital Assistant)			MODEL		MC7094	
CHAN.	FREQ. (MHz)	MODE	CONDUCTED POWER		POWER DRIFT (%)	DEVICE USE POWER	DEVICE TEST POSITION MODE	MEASURED 1g SAR (W/kg)
			BEGIN TEST	AFTER TEST				
661	1880.00 (Mid.)	GSM	0.836W	0.828W	-1.01	Standard Battery	46	1.060
64	5320.00	OFDM	17.179mW	16.737mW	-2.57			
78	2480.00 (High)	GFSK	1.072mW	1.050mW	-2.05			

NOTE:

1. Test configuration of each mode is described in section 3.
2. In this testing, the limit for General Population Spatial Peak averaged over **1g, 1.6W/kg**, is applied.
3. Please see the Appendix A for the data, and Appendix E for the photo of the test configuration.
4. The variation of the EUT conducted power measured before and after SAR testing should not over 5%.



PCS1900 + WLAN (2.4GHz) + BLUETOOTH LEFT HEAD POSITION

EUT		EDA (Enterprise Digital Assistant)			MODEL		MC7094	
CHAN.	FREQ. (MHz)	MODE	CONDUCTED POWER		POWER DRIFT (%)	DEVICE USE POWER	DEVICE TEST POSITION MODE	MEASURED 1g SAR (W/kg)
			BEGIN TEST	AFTER TEST				
661	1880.00 (Mid.)	GSM	0.836W	0.825W	-1.36	Standard Battery	47	0.437
6	2437.00 (Mid.)	DSSS	40.087mW	39.598mW	-1.22			
0	2402.00 (Low)	GFSK	0.857mW	0.841mW	-1.86			

NOTE:

1. Test configuration of each mode is described in section 3.
2. In this testing, the limit for General Population Spatial Peak averaged over **1g, 1.6W/kg**, is applied.
3. Please see the Appendix A for the data, and Appendix E for the photo of the test configuration.
4. The variation of the EUT conducted power measured before and after SAR testing should not over 5%.



PCS1900 + WLAN (5.0GHz) + BLUETOOTH LEFT HEAD POSITION

EUT		EDA (Enterprise Digital Assistant)			MODEL		MC7094	
CHAN.	FREQ. (MHz)	MODE	CONDUCTED POWER		POWER DRIFT (%)	DEVICE USE POWER	DEVICE TEST POSITION MODE	MEASURED 1g SAR (W/kg)
			BEGIN TEST	AFTER TEST				
661	1880.00 (Mid.)	GSM	0.836W	0.834W	-0.29	Standard Battery	48	1.290
64	5320.00	OFDM	17.179mW	17.131mW	-0.28			
78	2480.00 (High)	GFSK	1.072mW	1.049mW	-2.16			

NOTE:

1. Test configuration of each mode is described in section 3.
2. In this testing, the limit for General Population Spatial Peak averaged over **1g, 1.6W/kg**, is applied.
3. Please see the Appendix A for the data, and Appendix E for the photo of the test configuration.
4. The variation of the EUT conducted power measured before and after SAR testing should not over 5%.



GPRS850 + WLAN (2.4GHz) + BLUETOOTH BODY POSITION

EUT		EDA (Enterprise Digital Assistant)		MODEL		MC7094		
CHAN.	FREQ. (MHz)	MODE	CONDUCTED POWER		POWER DRIFT (%)	DEVICE USE POWER	DEVICE TEST POSITION MODE	MEASURED 1g SAR (W/kg)
			BEGIN TEST	AFTER TEST				
251	848.80 (High)	GPRS with 2 time slots	0.622W	0.620W	-0.36	Standard Battery	49	0.111
6	2437.00 (Mid.)	DSSS	40.087mW	39.903mW	-0.46			
78	2480.00 (High)	GFSK	1.072mW	1.050mW	-2.03			

NOTE:

1. Test configuration of each mode is described in section 3.
2. In this testing, the limit for General Population Spatial Peak averaged over **1g, 1.6W/kg**, is applied.
3. Please see the Appendix A for the data, and Appendix E for the photo of the test configuration.
4. The variation of the EUT conducted power measured before and after SAR testing should not over 5%.

GPRS850 + WLAN (5.0GHz) + BLUETOOTH BODY POSITION

EUT		EDA (Enterprise Digital Assistant)		MODEL		MC7094		
CHAN.	FREQ. (MHz)	MODE	CONDUCTED POWER		POWER DRIFT (%)	DEVICE USE POWER	DEVICE TEST POSITION MODE	MEASURED 1g SAR (W/kg)
			BEGIN TEST	AFTER TEST				
251	848.80 (High)	GPRS with 2 time slots	0.622W	0.620W	-0.36	Standard Battery	50	0.219
48	5240.00	OFDM	19.543mW	19.299mW	-1.25			
78	2480.00 (High)	GFSK	1.072mW	1.050mW	-2.03			

NOTE:

1. Test configuration of each mode is described in section 3.
2. In this testing, the limit for General Population Spatial Peak averaged over **1g, 1.6W/kg**, is applied.
3. Please see the Appendix A for the data, and Appendix E for the photo of the test configuration.
4. The variation of the EUT conducted power measured before and after SAR testing should not over 5%.

GPRS1900 + WLAN (2.4GHz) + BLUETOOTH BODY POSITION

EUT		EDA (Enterprise Digital Assistant)		MODEL		MC7094		
CHAN.	FREQ. (MHz)	MODE	CONDUCTED POWER		POWER DRIFT (%)	DEVICE USE POWER	DEVICE TEST POSITION MODE	MEASURED 1g SAR (W/kg)
			BEGIN TEST	AFTER TEST				
661	1880.00 (Mid.)	GPRS with 2 time slots	0.524W	0.503W	-3.96	Standard Battery	51	0.077
6	2437.00 (Mid.)	DSSS	40.087mW	39.903mW	-0.46			
78	2480.00 (High)	GFSK	1.072mW	1.050mW	-2.03			

NOTE:

1. Test configuration of each mode is described in section 3.
2. In this testing, the limit for General Population Spatial Peak averaged over **1g, 1.6W/kg**, is applied.
3. Please see the Appendix A for the data, and Appendix E for the photo of the test configuration.
4. The variation of the EUT conducted power measured before and after SAR testing should not over 5%.



GPR1900 + WLAN (5.0GHz) + BLUETOOTH BODY POSITION

EUT		EDA (Enterprise Digital Assistant)		MODEL		MC7094		
CHAN.	FREQ. (MHz)	MODE	CONDUCTED POWER		POWER DRIFT (%)	DEVICE USE POWER	DEVICE TEST POSITION MODE	MEASURED 1g SAR (W/kg)
			BEGIN TEST	AFTER TEST				
661	1880.00 (Mid.)	GPRS with 2 time slots	0.524W	0.503W	-3.96	Standard Battery	52	0.219
48	5240.00	OFDM	19.543mW	19.299mW	-1.25			
78	2480.00 (High)	GFSK	1.072mW	1.050mW	-2.03			

NOTE:

1. Test configuration of each mode is described in section 3.
2. In this testing, the limit for General Population Spatial Peak averaged over **1g, 1.6W/kg**, is applied.
3. Please see the Appendix A for the data, and Appendix E for the photo of the test configuration.
4. The variation of the EUT conducted power measured before and after SAR testing should not over 5%.



5.3 SAR LIMITS

HUMAN EXPOSURE	SAR (W/kg)	
	(General Population / Uncontrolled Exposure Environment)	(Occupational / controlled Exposure Environment)
Spatial Average (whole body)	0.08	0.4
Spatial Peak (averaged over 1 g)	1.6	8.0
Spatial Peak (hands/wrists/feet/ankles averaged over 10 g)	4.0	20.0

NOTE:

1. This limits accord to 47 CFR 2.1093 – Safety Limit.
2. The EUT property been complied with the partial body exposure limit under the general population environment.

5.4 RECIPES FOR TISSUE SIMULATING LIQUIDS

For the measurement of the field distribution inside the SAM phantom, the phantom must be filled with 25 liters of tissue simulation liquid.

The following ingredients are used :

- **WATER-** Deionized water (pure H₂O), resistivity ≈ 16 M - as basis for the liquid
- **SUGAR-** Refined sugar in crystals, as available in food shops - to reduce relative permittivity
- **SALT-** Pure NaCl - to increase conductivity
- **CELLULOSE-** Hydroxyethyl-cellulose, medium viscosity (75-125 mPa.s, 2% in water, 20°C),
CAS # 54290 - to increase viscosity and to keep sugar in solution
- **PRESERVATIVE-** Preventol D-7 Bayer AG, D-51368 Leverkusen, CAS # 55965-84-9 - to prevent the spread of bacteria and molds
- **DGMBE-** Diethylenglycol-monobuthyl ether (DGMBE), Fluka Chemie GmbH, CAS # 112-34-5 - to reduce relative permittivity

THE RECIPES FOR 900MHz SIMULATING LIQUID TABLE

INGREDIENT	HEAD SIMULATING LIQUID 900MHz (HSL-900)	MUSCLE SIMULATING LIQUID 900MHz (MSL-900)
Water	40.28%	50.07%
Cellulose	02.41%	NA
Salt	01.38%	0.94%
Preventtol D-7	00.18%	0.09%
Sugar	57.97%	48.2%
Dielectric Parameters at 22°C	f = 900MHz $\epsilon = 41.5 \pm 5\%$ $\sigma = 0.97 \pm 5\%$ S/m	f = 900MHz $\epsilon = 55.0 \pm 5\%$ $\sigma = 1.05 \pm 5\%$ S/m



THE RECIPES FOR 1900MHz SIMULATING LIQUID TABLE

INGREDIENT	HEAD SIMULATING LIQUID 1900MHz (HSL-1900)	MUSCLE SIMULATING LIQUID 1900MHz (MSL-1900)
Water	55.24%	70.16%
DGMBE	44.45%	29.44%
Salt	0.306%	00.39%
Dielectric Parameters at 22°C	f= 1900MHz ε= 40.0 ± 5% σ= 1.40 ± 5% S/m	f= 1900MHz ε= 53.3 ± 5% σ= 1.52 ± 5% S/m

THE RECIPES FOR 2450MHz SIMULATING LIQUID TABLE

INGREDIENT	HEAD SIMULATING LIQUID 2450MHz (HSL-2450)	MUSCLE SIMULATING LIQUID 2450MHz (MSL-2450)
Water	45%	69.83%
DGMBE	55%	30.17%
Salt	NA	NA
Dielectric Parameters at 22°C	f= 2450MHz ε= 39.2 ± 5% σ= 1.80 ± 5% S/m	f= 2450MHz ε= 52.7 ± 5% σ= 1.95 ± 5% S/m

THE INFORMATION FOR 5GHz SIMULATING LIQUID

The 5 GHz liquids was purchased from SPEAG.

Body liquid model: HSL 5800, P/N: SL AAH 5800 AA

Head liquid model: M 5800, P/N: SL AAM 580 AD

5GHz liquids contain the following ingredients:

Water 64 - 78%

Mineral Oil 11 - 18%

Emulsifiers 9 - 15%

Additives and Salt 2 - 3%



Testing the liquids using the Agilent Network Analyzer E8358A and Agilent Dielectric Probe Kit 85070D. The testing procedure is following as

1. Turn Network Analyzer on and allow at least 30 min. warm up.
2. Mount dielectric probe kit so that interconnecting cable to Network Analyzer will not be moved during measurements or calibration.
3. Pour de-ionized water and measure water temperature ($\pm 1^\circ$).
4. Set water temperature in Agilent-Software (Calibration Setup).
5. Perform calibration.
6. Validate calibration with dielectric material of known properties (e.g. polished ceramic slab with $>8\text{mm}$ thickness $\epsilon' = 10.0$, $\epsilon'' = 0.0$). If measured parameters do not fit within tolerance, repeat calibration (± 0.2 for ϵ' : ± 0.1 for ϵ'').
7. Conductivity can be calculated from ϵ'' by $\sigma = \omega \epsilon_0 \epsilon'' = \epsilon'' f [\text{GHz}] / 18$.
8. Measure liquid shortly after calibration. Repeat calibration every hour.
9. Stir the liquid to be measured. Take a sample ($\sim 50\text{ml}$) with a syringe from the center of the liquid container.
10. Pour the liquid into a small glass flask. Hold the syringe at the bottom of the flask to avoid air bubbles.
11. Put the dielectric probe in the glass flask. Check that there are no air bubbles in front of the opening in the dielectric probe kit.
12. Perform measurements.
13. Adjust medium parameters in DASY4 for the frequencies necessary for the measurements ('Setup Config', select medium (e.g. Brain 900 MHz) and press 'Option'-button.
14. Select the current medium for the frequency of the validation (e.g. Setup Medium Brain 900 MHz).



FOR GSM BAND SIMULATING LIQUID

LIQUID TYPE		HSL-900		MSL-900	
SIMULATING LIQUID TEMP.		22.1		22.0	
TESTED DATE		Oct. 14, 2005		Oct. 15, 2005	
TESTED BY		Sam Onn		Sam Onn	
FREQ. (MHz)	LIQUID PARAMETER	STANDARD VALUE	MEASUREMENT VALUE	STANDARD VALUE	MEASUREMENT VALUE
824.20	Permittivity (ϵ)	41.55	41.60	55.24	55.10
835.00		41.50	41.50	55.20	55.50
836.60		41.50	41.50	55.19	55.50
848.80		41.50	41.30	55.15	55.40
824.20	Conductivity (σ) S/m	0.899	0.880	0.969	0.950
835.00		0.900	0.890	0.970	0.990
836.60		0.901	0.890	0.972	0.990
848.80		0.914	0.900	0.987	1.000
Dielectric Parameters Required at 22°C		f= 900MHz $\epsilon= 41.5 \pm 5\%$ $\sigma= 0.97 \pm 5\%$ S/m		f= 900MHz $\epsilon= 55.0 \pm 5\%$ $\sigma= 1.05 \pm 5\%$ S/m	



FOR PCS BAND SIMULATING LIQUID

LIQUID TYPE		HSL-1900		MSL-1900	
SIMULATING LIQUID TEMP.		21.8		21.7	
TESTED DATE		Oct. 20, 2005		Oct. 21, 2005	
TESTED BY		Sam Onn		Sam Onn	
FREQ. (MHz)	LIQUID PARAMETER	STANDARD VALUE	MEASUREMENT VALUE	STANDARD VALUE	MEASUREMENT VALUE
1850.2	Permittivity (ϵ)	40.0	39.6	53.3	52.9
1880.0		40.0	39.5	53.3	52.9
1900.0		40.0	39.4	53.3	52.8
1909.8		40.0	39.4	53.3	52.7
1850.2	Conductivity (σ) S/m	1.40	1.36	1.52	1.51
1880.0		1.40	1.39	1.52	1.55
1900.0		1.40	1.42	1.52	1.58
1909.8		1.40	1.43	1.52	1.59
Dielectric Parameters Required at 22°C		f= 1900MHz $\epsilon= 40.0 \pm 5\%$ $\sigma= 1.40 \pm 5\%$ S/m		f= 1900MHz $\epsilon= 53.3 \pm 5\%$ $\sigma= 1.52 \pm 5\%$ S/m	



FOR 2.4GHz BAND SIMULATING LIQUID

LIQUID TYPE		HSL-2450		MSL-2450	
SIMULATING LIQUID TEMP.		21.7		21.7	
TEST DATE		Oct. 11, 2005		Oct. 13, 2005	
TESTED BY		Sam Onn		Sam Onn	
FREQ. (MHz)	LIQUID PARAMETER	STANDARD VALUE	MEASUREMENT VALUE	STANDARD VALUE	MEASUREMENT VALUE
2412.0	Permittivity (ϵ)	39.267	38.300	52.750	51.000
2437.0		39.223	38.200	52.710	50.900
2450.0		39.200	38.200	52.700	50.900
2462.0		39.184	38.100	52.680	50.800
2412.0	Conductivity (σ) S/m	1.766	1.770	1.913	1.940
2437.0		1.788	1.800	1.937	1.970
2450.0		1.800	1.820	1.950	1.990
2462.0		1.813	1.830	1.967	2.010
Dielectric Parameters Required at 22°C		f= 2450MHz $\epsilon= 39.2 \pm 5\%$ $\sigma= 1.80 \pm 5\%$ S/m		f= 2450MHz $\epsilon= 52.7 \pm 5\%$ $\sigma= 1.95 \pm 5\%$ S/m	



LIQUID TYPE		HSL-2450		MSL-2450	
SIMULATING LIQUID TEMP.		21.5		21.7	
TEST DATE		Oct. 12, 2005		Oct. 13, 2005	
TESTED BY		Sam Onn		Sam Onn	
FREQ. (MHz)	LIQUID PARAMETER	STANDARD VALUE	MEASUREMENT VALUE	STANDARD VALUE	MEASUREMENT VALUE
2402.0	Permittivity (ϵ)	39.28	39.30	52.76	51.00
2441.0		39.21	39.10	52.71	50.90
2450.0		39.20	39.10	52.70	50.90
2480.0		39.16	39.00	52.66	50.80
2402.0	Conductivity (σ) S/m	1.75	1.76	1.90	1.93
2441.0		1.79	1.81	1.94	1.98
2450.0		1.80	1.82	1.95	1.99
2480.0		1.83	1.85	1.99	2.03
Dielectric Parameters Required at 22°C		f= 2450MHz $\epsilon= 39.2 \pm 5\%$ $\sigma= 1.80 \pm 5\% \text{ S/m}$		f= 2450MHz $\epsilon= 52.7 \pm 5\%$ $\sigma= 1.95 \pm 5\% \text{ S/m}$	



FOR 5.0GHz BAND SIMULATING LIQUID

LIQUID TYPE		HSL-5800		MSL-5800	
SIMULATING LIQUID TEMP.		22.2		21.3	
TEST DATE		Oct. 22, 2005		Oct. 23, 2005	
TESTED BY		Sam Onn		Sam Onn	
FREQ. (MHz)	LIQUID PARAMETER	STANDARD VALUE	MEASUREMENT VALUE	STANDARD VALUE	MEASUREMENT VALUE
5180.0	Permittivity (ϵ)	36.00	37.00	49.04	48.70
5200.0		35.98	37.00	49.01	48.70
5240.0		35.94	36.90	48.96	48.60
5260.0		35.91	36.90	48.93	48.50
5320.0		35.84	36.80	48.85	48.40
5745.0		35.36	35.90	48.27	47.40
5785.0		35.31	35.90	48.22	47.30
5800.0		35.30	35.80	48.20	47.30
5825.0		35.27	35.80	48.16	47.20
5180.0	Conductivity (σ) S/m	4.63	4.72	5.27	5.19
5200.0		4.65	4.75	5.29	5.22
5240.0		4.69	4.80	5.34	5.28
5260.0		4.71	4.82	5.36	5.31
5320.0		4.77	4.89	5.43	5.39
5745.0		5.21	5.40	5.93	6.01
5785.0		5.25	5.44	5.98	6.07
5800.0		5.27	5.46	6.00	6.09
5825.0		5.29	5.49	6.02	6.13
Dielectric Parameters Required at 22°C					



5.5 TEST EQUIPMENT FOR TISSUE PROPERTY

ITEM	NAME	BAND	TYPE	SERIES NO.	CALIBRATED UNTIL
1	Network Analyzer	Agilent	E8358A	US41480538	Oct. 25, 2005
2	Dielectric Probe	Agilent	85070D	US01440176	NA

NOTE:

1. Before testing the measurement, all test equipment shall have 30 min warm up.
2. The tolerance ($k=1$) specified by Agilent for general dielectric measurements, deriving from inaccuracies in the calibration data, analyzer drift, and random errors, are usually $\pm 2.5\%$ and $\pm 5\%$ for measured permittivity and conductivity, respectively. However, the tolerances for the conductivity is smaller for material with large loss tangents, i.e., less than $\pm 2.5\%$ ($k=1$). It can be substantially smaller if more accurate methods are applied.

6. SYSTEM VALIDATION

The system validation was performed in the flat phantom with equipment listed in the following table. Since the SAR value is calculated from the measured electric field, dielectric constant and conductivity of the body tissue and the SAR is proportional to the square of the electric field. So, the SAR value will be also proportional to the RF power input to the system validation dipole under the same test environment. In our system validation test, 250mW RF input power was used.

6.1 TEST EQUIPMENT

ITEM	NAME	BAND	TYPE	SERIES NO.	CALIBRATED UNTIL
1	SAM Phantom	S & P	QD000 P40 CA	PT-1150	NA
2	Signal Generator	Anritsu	68247B	984703	May 04, 2006
3	E-Field Probe	S & P	ET3DV6	1790	Dec. 19, 2006
		Speaq	EX3DV3	3506	Mar. 18, 2006
4	DAE	S & P	DAE3 V1	579	Mar. 22, 2006
5	Robot Positioner	Staubli Unimation	NA	NA	NA
6	Validation Dipole	S & P	D835V2	4d021	Jun. 09, 2006
		S & P	D1900V2	5d036	Mar. 21, 2006
		S & P	D2450V2	737	Mar. 15, 2006
		S & P	D5GHzV2	1019	Mar. 22, 2006

- NOTE:** 1. Before starting the measurement, all test equipment shall be warmed up for 30min.
2. System validation was performed to check the condition during each test. According to this situation, calibrated period for the validation dipole back to the original factory is one year, and the others will be two.



6.2 TEST PROCEDURE

Before you start the system performance check, need only to tell the system with which components (probe, medium, and device) are performing the system performance check; the system will take care of all parameters. The dipole must be placed beneath the flat phantom section of the SAM Twin Phantom with the correct distance holder in place. The distance holder should touch the phantom surface with a light pressure at the reference marking (little cross) and be oriented parallel to the long side of the phantom. Accurate positioning is not necessary, since the system will search for the peak SAR location, except that the dipole arms should be parallel to the surface. The device holder for Tri-Band GSM900/DCS1800/PCS1900 GSM/GPRS/CDMA Mobile Phones can be left in place but should be rotated away from the dipole.

1.The "Power Reference Measurement" and "Power Drift Measurement" jobs are located at the beginning and end of the batch process. They measure the field drift at one single point in the liquid over the complete procedure. The indicated drift is mainly the variation of the amplifier output power. If it is too high (above ± 0.1 dB), the system performance check should be repeated; some amplifiers have very high drift during warm-up. A stable amplifier gives drift results in the DASY system below ± 0.02 dB.

2.The "Surface Check" job tests the optical surface detection system of the DASY system by repeatedly detecting the surface with the optical and mechanical surface detector and comparing the results. The output gives the detecting heights of both systems, the difference between the two systems and the standard deviation of the detection repeatability. Air bubbles or refraction in the liquid due to separation of the sugar-water mixture gives poor repeatability (above ± 0.1 mm). In that case it is better to abort the system performance check and stir the liquid. The difference between the optical surface detection and the actual surface depends on the probe and is specified with each probe. (It does not depend on the surface reflectivity or the probe angle to the surface within $\pm 30^\circ$.) However, varying breaking indices of different liquid compositions might also influence the distance. If the indicated difference varies from the actual setting, the probe parameter "optical surface



3. The "Area Scan" job measures the SAR above the dipole on a plane parallel to the surface. It is used to locate the approximate location of the peak SAR. The proposed scan uses large grid spacing for faster measurement; due to the symmetric field, the peak detection is reliable. If a finer graphic is desired, the grid spacing can be reduced. Grid spacing and orientation have no influence on the SAR result.

4. The "Zoom Scan" job measures the field in a volume around the peak SAR value assessed in the previous "Area Scan" job (for more information see the application note on SAR evaluation).

About the validation dipole positioning uncertainty, the constant and low loss dielectric spacer is used to establish the correct distance between the top surface of the dipole and the bottom surface of the phantom, the error component introduced by the uncertainty of the distance between the liquid (i.e., phantom shell) and the validation dipole in the DASy4 system is less than ± 0.1 mm.

$$SAR_{tolerance} [\%] = 100 \times \left(\frac{(a + d)^2}{a^2} - 1 \right)$$

As the closest distance is 10mm, the resulting tolerance $SAR_{tolerance} [\%]$ is <2%.



6.3 VALIDATION RESULTS

SYSTEM VALIDATION TEST OF SIMULATING LIQUID					
FREQUENCY (MHz)	REQUIRED SAR (mW/g)	MEASURED SAR (mW/g)	DEVIATION (%)	SEPARATION DISTANCE	TESTED DATE
HSL900	2.36 (1g)	2.20	-6.78	15mm	Oct. 14, 2005
MSL900	2.36 (1g)	2.37	0.42	15mm	Oct. 15, 2005
HSL1900	9.86 (1g)	9.12	-7.51	10mm	Oct. 20, 2005
MSL1900	9.82 (1g)	9.34	-4.89	10mm	Oct. 21, 2005
HSL2450	13.70 (1g)	12.70	-7.30	10mm	Oct. 11, 2005
HSL2450	13.70 (1g)	12.80	-6.57	10mm	Oct. 12, 2005
MSL2450	13.40 (1g)	12.80	-4.48	10mm	Oct. 13, 2005
HSL5200	19.80 (1g)	19.90	0.51	10mm	Oct. 22, 2005
MSL5200	18.60 (1g)	17.40	-6.45	10mm	Oct. 23, 2005
HSL5800	20.60 (1g)	20.70	0.49	10mm	Oct. 22, 2005
MSL5800	17.90 (1g)	16.60	-7.26	10mm	Oct. 23, 2005
TESTED BY	Sam Onn				

NOTE: Please see Appendix for the photo of system validation test.



6.4 SYSTEM VALIDATION UNCERTAINTIES (FREQUENCY BAND < 3GHz)

In the table below, the system validation uncertainty with respect to the analytically assessed SAR value of a dipole source as given in the IEEE 1528 standard is given. This uncertainty is smaller than the expected uncertainty for mobile phone measurements due to the simplified setup and the symmetric field distribution.

Error Description	Tolerance (±%)	Probability Distribution	Divisor	(C _i)		Standard Uncertainty (±%)		(v _i)
				(1g)	(10g)	(1g)	(10g)	
Measurement System								
Probe Calibration	4.8	Normal	1	1	1	4.8	4.8	∞
Axial Isotropy	4.7	Rectangular	√3	1	1	2.7	2.7	∞
Hemispherical Isotropy	0	Rectangular	√3	1	1	0	0	∞
Boundary effect	1.0	Rectangular	√3	1	1	0.6	0.6	∞
Linearity	4.7	Rectangular	√3	1	1	2.7	2.7	∞
System Detection Limit	1.0	Rectangular	√3	1	1	0.6	0.6	∞
Readout Electronics	1.0	Normal	1	1	1	1.0	1.0	∞
Response Time	0	Rectangular	√3	1	1	0	0	∞
Integration Time	0	Rectangular	√3	1	1	0	0	∞
RF Ambient Conditions	3.0	Rectangular	√3	1	1	1.7	1.7	∞
Probe Positioner	0.4	Rectangular	√3	1	1	0.2	0.2	∞
Probe positioning	2.9	Rectangular	√3	1	1	1.7	1.7	∞
Algorithms for Max. SAR Evaluation	1.0	Rectangular	√3	1	1	0.6	0.6	∞
Dipole								
Dipole Axis to Liquid Distance	2.0	Rectangular	√3	1	1	1.2	1.2	∞
Input power and SAR drift measurement	4.7	Rectangular	√3	1	1	2.7	2.7	∞
Phantom and Tissue Parameters								
Phantom Uncertainty	4.0	Rectangular	√3	1	1	2.3	2.3	∞
Liquid Conductivity (target)	5.0	Rectangular	√3	0.64	0.43	1.8	1.2	∞
Liquid Conductivity (measurement)	2.5	Normal	1	0.64	0.43	1.6	1.1	∞
Liquid Permittivity (target)	5.0	Rectangular	√3	0.6	0.49	1.7	1.4	∞
Liquid Permittivity (measurement)	2.5	Normal	1	0.6	0.49	1.5	1.2	∞
Combined Standard Uncertainty						8.4	8.1	∞
Coverage Factor for 95%						kp=2		
Expanded Uncertainty (K=2)						16.8	16.2	

NOTE: About the system validation uncertainty assessment, please reference the section 7.

6.5 SYSTEM VALIDATION UNCERTAINTIES (FREQUENCY BAND 5 ~ 6GHz)

Error Description	Tolerance (±%)	Probability Distribution	Divisor	(C _i)		Standard Uncertainty (±%)		(v _i)
				(1g)	(10g)	(1g)	(10g)	
Measurement System								
Probe Calibration	6.6	Normal	1	1	1	4.8	6.6	∞
Axial Isotropy	4.7	Rectangular	$\sqrt{3}$	1	1	2.7	2.7	∞
Hemispherical Isotropy	0.0	Rectangular	$\sqrt{3}$	1	1	0.0	0.0	∞
Boundary effect	2.0	Rectangular	$\sqrt{3}$	1	1	1.2	1.2	∞
Linearity	4.7	Rectangular	$\sqrt{3}$	1	1	2.7	2.7	∞
System Detection Limit	1.0	Rectangular	$\sqrt{3}$	1	1	0.6	0.6	∞
Readout Electronics	1.0	Normal	1	1	1	1.0	1.0	∞
Response Time	0.0	Rectangular	$\sqrt{3}$	1	1	0.0	0.0	∞
Integration Time	0.0	Rectangular	$\sqrt{3}$	1	1	0.0	0.0	∞
RF Ambient Conditions	3.0	Rectangular	$\sqrt{3}$	1	1	1.7	1.7	∞
Probe Positioner	0.8	Rectangular	$\sqrt{3}$	1	1	0.5	0.5	∞
Probe positioning	5.7	Normal	1	1	1	5.7	5.7	∞
Algorithms for Max. SAR Evaluation	4.0	Rectangular	$\sqrt{3}$	1	1	2.3	2.3	∞
Dipole								
Dipole Axis to Liquid Distance	2.0	Rectangular	$\sqrt{3}$	1	1	1.2	1.2	∞
Input power and SAR drift measurement	4.7	Rectangular	$\sqrt{3}$	1	1	2.7	2.7	∞
Phantom and Tissue Parameters								
Phantom Uncertainty	4.0	Rectangular	$\sqrt{3}$	1	1	2.3	2.3	∞
Liquid Conductivity (target)	5.0	Rectangular	$\sqrt{3}$	0.64	0.43	1.8	1.2	∞
Liquid Conductivity (measurement)	2.5	Normal	1	0.64	0.43	1.6	1.1	∞
Liquid Permittivity (target)	5.0	Rectangular	$\sqrt{3}$	0.60	0.49	1.7	1.4	∞
Liquid Permittivity (measurement)	2.5	Normal	1	0.60	0.49	1.5	1.2	∞
Combined Standard Uncertainty						11.3	11.1	∞
Coverage Factor for 95%						k _p =2		
Expanded Uncertainty (K=2)						22.6	22.1	

Table 6.1

- NOTE:** 1. Table 6.1 Uncertainty of the system performance check in the 5 ~ 6GHz range. Probe calibration error reflects uncertainty of the EX3DV3 probe conversion factor at Calibration Frequency.
2. About the system validation uncertainty assessment, please reference the section 7.



7. MEASUREMENT SAR PROCEDURE UNCERTAINTIES

The assessment of spatial peak SAR of the hand held devices is according to IEEE 1528. All testing situation shall be met below these requirements.

- The system is used by an experienced engineer who follows the manual and the guidelines taught during the training provided by SPEAG.
- The probe has been calibrated within the requested period and the stated uncertainty for the relevant frequency bands does not exceed 4.8% (k=1).
- The validation dipole has been calibrated within the requested period and the system performance check has been successful.
- The DAE unit has been calibrated within the within the requested period.
- The minimum distance between the probe sensor and inner phantom shell is selected to be between 4 and 5mm.
- The operational mode of the DUT is CW, CDMA, FDMA or TDMA (GSM, DCS, PCS, IS136 and PDC) and the measurement/integration time per point is >500 ms.
- The dielectric parameters of the liquid have been assessed using Agilent 85070D dielectric probe kit or a more accurate method.
- The dielectric parameters are within 5% of the target values.
- The DUT has been positioned as described in section 3.

7.1. PROBE CALIBRATION UNCERTAINTY

SPEAG conducts the probe calibration in compliance with international and national standards (e.g. IEEE 1528, EN50361, IEC 62209, etc.) under ISO17025. The uncertainties are stated on the calibration certificate. For the most relevant frequency bands, these values do not exceed 4.8% (k=1). If evaluations of other bands are performed for which the uncertainty exceeds these values, the uncertainty tables given in the summary have to be revised accordingly.

7.2. ISOTROPY UNCERTAINTY

The axial isotropy tolerance accounts for probe rotation around its axis while the hemispherical isotropy error includes all probe orientations and field polarizations. These parameters are assessed by SPEAG during initial calibration. In 2001, SPEAG further tightened its quality controls and warrants that the maximal deviation from axial isotropy is ± 0.20 dB, while the maximum deviation of hemispherical isotropy is ± 0.40 dB, corresponding to $\pm 4.7\%$ and $\pm 9.6\%$, respectively. A weighting factor of c_p equal to 0.5 can be applied, since the axis of the probe deviates less than 30 degrees from the normal surface orientation.

7.3. BOUNDARY EFFECT UNCERTAINTY

The effect can be estimated according to the following error approximation formula

$$SAR_{tolerance}[\%] = SAR_{be}[\%] \times \frac{(d_{be} + d_{step})^2}{2d_{step}} \frac{e^{-\frac{d_{be}}{\delta/2}}}{\delta/2}$$

$$d_{be} + d_{step} < 10mm$$

The parameter d_{be} is the distance in mm between the surface and the closest measurement point used in the averaging process; d_{step} is the separation distance in mm between the first and second measurement points; δ is the minimum penetration depth in mm within the head tissue equivalent liquids (i.e., $\delta = 13.95$ mm at 3GHz); SAR_{be} is the deviation between the measured SAR value at the distance d_{be} from the boundary and the wave-guide analytical value $SAR_{ref-DASY4}$. DASY4 applies a boundary effect compensation algorithm according to IEEE 1528, which is possible since the axis of the probe never deviates more than 30 degrees from the normal surface orientation. $SAR_{be}[\%]$ is assessed during the calibration process and SPEAG warrants that the uncertainty at distances larger than 4mm is always less than 1%. In summary, the worst case boundary effect SAR tolerance[%] for scanning distances larger than 4mm is $< \pm 0.8\%$.

7.4. PROBE LINEARITY UNCERTAINTY

Field probe linearity uncertainty includes errors from the assessment and compensation of the diode compression effects for CW and pulsed signals with known duty cycles. This error is assessed using the procedure described in IEEE 1528. For SPEAG field probes, the measured difference between CW and pulsed signals, with pulse frequencies between 10 Hz and 1 kHz and duty cycles between 1 and 100, is $< \pm 0.20$ dB ($< \pm 4.7\%$).

7.5. READOUT ELECTRONICS UNCERTAINTY

All uncertainties related to the probe readout electronics (DAE unit), including the gain and linearity of the instrumentation amplifier, its loading effect on the probe, and accuracy of the signal conversion algorithm, have been assessed accordingly to IEEE 1528. The combination (root-sum-square RSS method) of these components results in an overall maximum error of $\pm 1.0\%$.

7.6. RESPONSE TIME UNCERTAINTY

The time response of the field probes is assessed by exposing the probe to a well-controlled electric field producing SAR larger than 2.0 W/kg at the tissue medium surface. The signal response time is evaluated as the time required by the system to reach 90% of the expected final value after an on/of switch of the power source. Analytically, it can be expressed as:

$$SAR_{tolerance} [\%] = 100 \times \left(\frac{T_m}{T_m + \tau e^{-T_m/\tau} - \tau} - 1 \right)$$

where T_m is 500 ms, i.e., the time between measurement samples, and τ the time constant. The response time τ of SPEAG's probes is < 5 ms. In the current implementation, DASY4 waits longer than 100 ms after having reached the grid point before starting a measurement, i.e., the response time uncertainty is negligible.

7.7. INTEGRATION TIME UNCERTAINTY

If the device under test does not emit a CW signal, the integration time applied to measure the electric field at a specific point may introduce additional uncertainties due to the discretization and can be assessed as follows

$$SAR_{tolerance} [\%] = 100 \times \sum_{all\ sub-frames} \frac{t_{frame}}{t_{integration}} \frac{slot_{idle}}{slot_{total}}$$

The tolerances for the different systems are given in Table 7.1, whereby the worst-case $SAR_{tolerance}$ is 2.6%.

System	$SAR_{tolerance} \%$
CW	0
CDMA*	0
WCDMA*	0
FDMA	0
IS-136	2.6
PDC	2.6
GSM/DCS/PCS	1.7
DECT	1.9
Worst-Case	2.6

TABLE 7.1

7.8. PROBE POSITIONER MECHANICAL TOLERANCE

The mechanical tolerance of the field probe positioner can introduce probe positioning uncertainties. The resulting SAR uncertainty is assessed by comparing the SAR obtained according to the specifications of the probe positioner with respect to the actual position defined by the geometric center of the probe sensors. The tolerance is determined as:

$$SAR_{tolerance} [\%] = 100 \times \frac{d_{ph}}{\delta/2}$$

The specified repeatability of the RX robot family used in DASY4 systems is $\pm 25 \mu\text{m}$. The absolute accuracy for short distance movements is better than $\pm 0.1\text{mm}$, i.e., the $SAR_{tolerance} [\%]$ is better than 1.5% (rectangular).

7.9. PROBE POSITIONING

The probe positioning procedures affect the tolerance of the separation distance between the probe tip and the phantom surface as:

$$SAR_{tolerance} [\%] = 100 \times \frac{d_{ph}}{\delta/2}$$

where d_{ph} is the maximum deviation of the distance between the probe tip and the phantom surface. The optical surface detection has a precision of better than 0.2 mm, resulting in an $SAR_{tolerance} [\%]$ of <2.9% (rectangular distribution). Since the mechanical detection provides better accuracy, 2.9% is a worst-case figure for DASY4 system.

7.10. PHANTOM UNCERTAINTY

The SAR measurement uncertainty due to SPEAG phantom shell production tolerances has been evaluated using

$$SAR_{tolerance}[\%] \cong 100 \times \frac{2d}{a}, \quad d \ll a$$

For a maximum deviation d of the inner and outer shell of the phantom from that specified in the CAD file of ± 0.2 mm, and a 10mm spacing a between source and tissue liquid, the calculated phantom uncertainty is $\pm 4.0\%$.



7.11. DASY4 UNCERTAINTY BUDGET (FREQUENCY BAND < 3GHz)

Error Description	Tolerance (±%)	Probability Distribution	Divisor	(C _i)		Standard Uncertainty (±%)		(v _i)
				(1g)	(10g)	(1g)	(10g)	
Measurement Equipment								
Probe Calibration	4.8	Normal	1	1	1	4.8	4.8	∞
Axial Isotropy	4.7	Rectangular	√3	1	1	1.9	1.9	∞
Hemispherical Isotropy	9.6	Rectangular	√3	1	1	3.9	3.9	∞
Boundary effect	1.0	Rectangular	√3	1	1	0.6	0.6	∞
Linearity	4.7	Rectangular	√3	1	1	2.7	2.7	∞
System Detection Limit	1.0	Rectangular	√3	1	1	0.6	0.6	∞
Readout Electronics	1.0	Normal	1	1	1	1.0	1.0	∞
Response Time	0.8	Normal	1	1	1	0.8	0.8	∞
Integration Time	2.6	Normal	1	1	1	2.6	2.6	∞
Noise	0.0	Normal	1	0	0	0	0	∞
Mechanical Constraints								
Scanning System	0.4	Rectangular	√3	1	1	0.2	0.2	∞
Phantom Shell	4.0	Rectangular	√3	1	1	2.3	2.3	∞
Probe Positioning	2.9	Rectangular	√3	1	1	1.7	1.7	∞
Device Positioning	2.9	Normal	1	1	1	2.9	2.9	875
Physical Parameters								
Liquid Conductivity (target)	5.0	Rectangular	√3	0.7	0.5	2	1.4	∞
Liquid Conductivity (measurement)	4.3	Rectangular	√3	0.7	0.5	1.7	1.2	∞
Liquid Permittivity (target)	5.0	Rectangular	√3	0.6	0.5	1.7	1.4	∞
Liquid Permittivity (measurement)	4.3	Rectangular	√3	0.6	0.5	1.5	1.2	∞
Power Drift	5	Rectangular	√3	1	1	2.9	2.9	∞
RF Ambient Conditions	3.0	Rectangular	√3	1	1	1.7	1.7	∞
Post-Processing								
Extrapolation and Integration	1	Rectangular	√3	1	1	0.6	0.6	∞
Combined Standard Uncertainty						9.9	9.7	
Coverage Factor for 95%						kp=2		
Expanded Uncertainty (K=2)						19.9	19.3	

TABLE 7.2

The table 7.2: Worst-Case uncertainty budget for DASY4 assessed according to IEEE 1528. The budget is valid for the frequency range 300MHz ~ 3GHz and represents a worst-case analysis. For specific tests and configurations, the uncertainty could be considerable smaller.

7.12. DASY4 UNCERTAINTY BUDGET (FREQUENCY BAND 5 ~ 6GHz)

Error Description	Tolerance (±%)	Probability Distribution	Divisor	(C _i)		Standard Uncertainty (±%)		(v _i)
				(1g)	(10g)	(1g)	(10g)	
Measurement System								
Probe Calibration	6.8	Normal	1	1	1	6.8	6.8	∞
Axial Isotropy	4.7	Rectangular	$\sqrt{3}$	0.7	0.7	1.9	1.9	∞
Hemispherical Isotropy	9.6	Rectangular	$\sqrt{3}$	0.7	0.7	3.9	3.9	∞
Boundary effect	2.0	Rectangular	$\sqrt{3}$	1	1	1.2	1.2	∞
Linearity	4.7	Rectangular	$\sqrt{3}$	1	1	2.7	2.7	∞
System Detection Limit	1.0	Rectangular	$\sqrt{3}$	1	1	0.6	0.6	∞
Readout Electronics	1.0	Normal	1	1	1	1.0	1.0	∞
Response Time	0.8	Rectangular	$\sqrt{3}$	1	1	0.5	0.5	∞
Integration Time	2.6	Rectangular	$\sqrt{3}$	1	1	1.5	1.5	∞
RF Ambient Conditions	3.0	Rectangular	$\sqrt{3}$	1	1	1.7	1.7	∞
Probe Positioner	0.8	Rectangular	$\sqrt{3}$	1	1	0.5	0.5	∞
Probe positioning	5.7	Normal	1	1	1	5.7	5.7	∞
Algorithms for Max. SAR Evaluation	4.0	Rectangular	$\sqrt{3}$	1	1	2.3	2.3	∞
Test EUT Related								
Device Positioning	2.9	Normal	1	1	1	2.9	2.9	145
Device Holder	3.6	Normal	1	1	1	3.6	3.6	5
Power Drift	5.0	Rectangular	$\sqrt{3}$	1	1	2.9	2.9	∞
Phantom and Tissue Parameters								
Phantom Uncertainty	4.0	Rectangular	$\sqrt{3}$	1	1	2.3	2.3	∞
Liquid Conductivity (target)	5.0	Rectangular	$\sqrt{3}$	0.64	0.43	1.8	1.2	∞
Liquid Conductivity (measurement)	2.5	Normal	1	0.64	0.43	1.6	1.1	∞
Liquid Permittivity (target)	5.0	Rectangular	$\sqrt{3}$	0.60	0.49	1.7	1.4	∞
Liquid Permittivity (measurement)	2.5	Normal	1	0.60	0.49	1.5	1.2	∞
Combined Standard Uncertainty						12.8	12.7	330
Expanded STD Uncertainty						25.7	25.3	

Table 7.3

The table 7.3: Worst-Case uncertainty budget for DASY4 valid for the frequency range 5 ~ 6 GHz. Probe calibration error reflects uncertainty of the narrow-bandwidth EX3DV3 probe conversion factor (±50 MHz).



8. INFORMATION ON THE TESTING LABORATORIES

We, ADT Corp., were founded in 1988 to provide our best service in EMC, Radio, Telecom and Safety consultation. Our laboratories are accredited and approved by the following approval agencies according to ISO/IEC 17025.

USA	FCC, NVLAP, UL, A2LA
GERMANY	TUV Rheinland
JAPAN	VCCI
NORWAY	NEMKO
CANADA	INDUSTRY CANADA , CSA
R.O.C.	CNLA, BSMI, DGT
NETHERLANDS	Telefication
SINGAPORE	PSB , GOST-ASIA (MOU)
RUSSIA	CERTIS (MOU)

Copies of accreditation certificates of our laboratories obtained from approval agencies can be downloaded from our web site:

www.adt.com.tw/index.5/phtml. If you have any comments, please feel free to contact us at the following:

Linko EMC/RF Lab:

Tel: 886-2-26052180

Fax: 886-2-26052943

Hsin Chu EMC/RF Lab:

Tel: 886-3-5935343

Fax: 886-3-5935342

Hwa Ya EMC/RF/Safety/Telecom Lab: Linko RF Lab.

Tel: 886-3-3183232

Fax: 886-3-3185050

Tel: 886-3-3270910

Fax: 886-3-3270892

Web Site: www.adt.com.tw

The address and road map of all our labs can be found in our web site also.