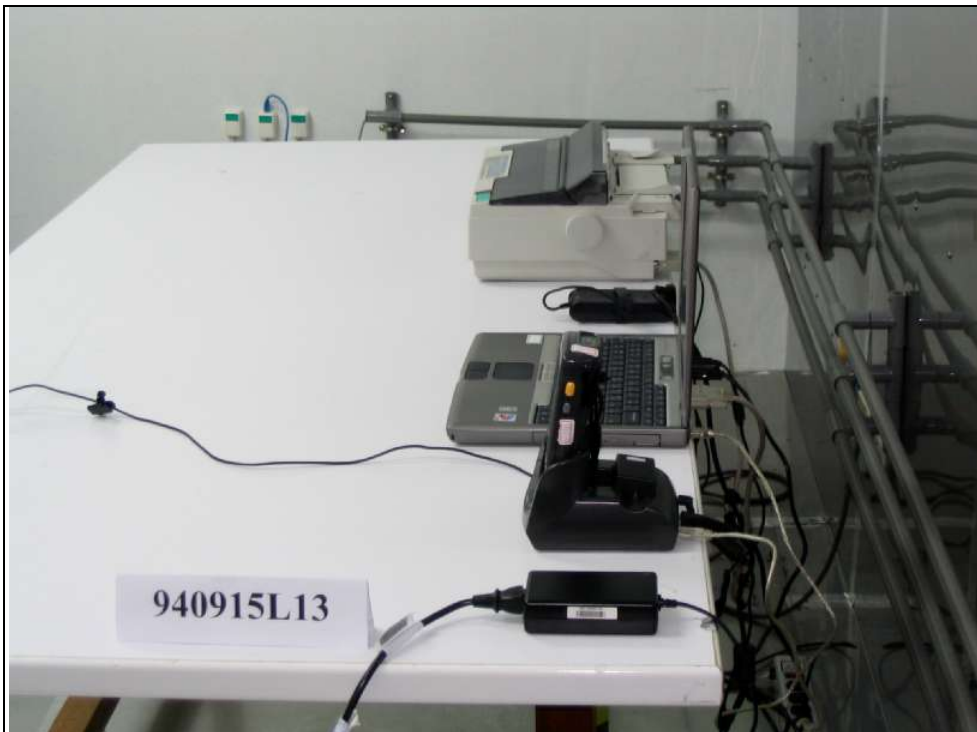


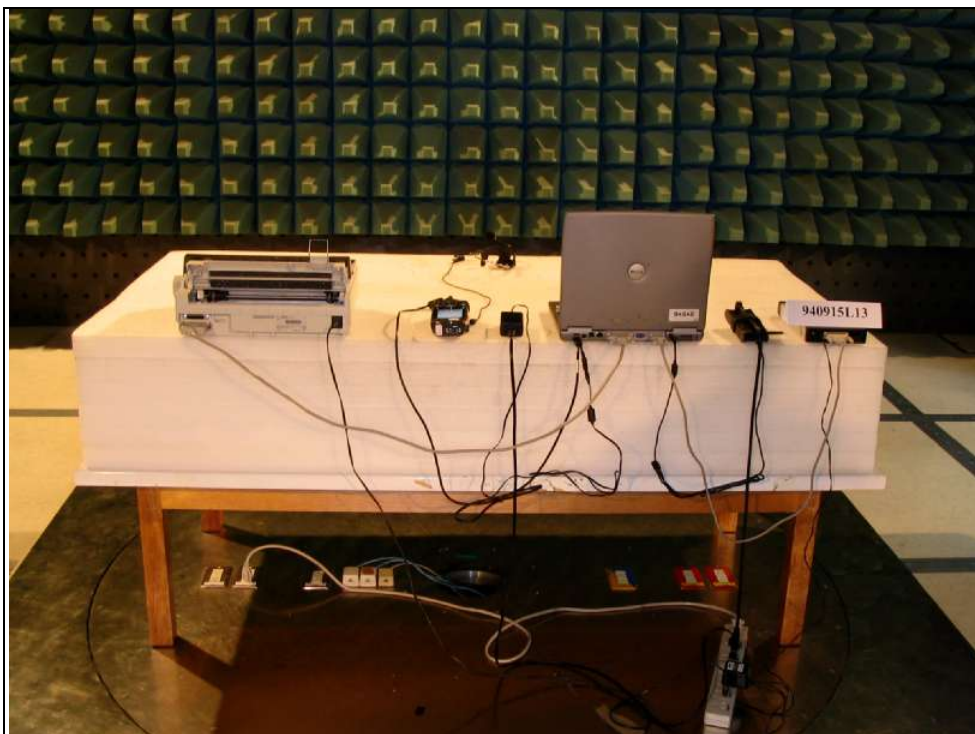
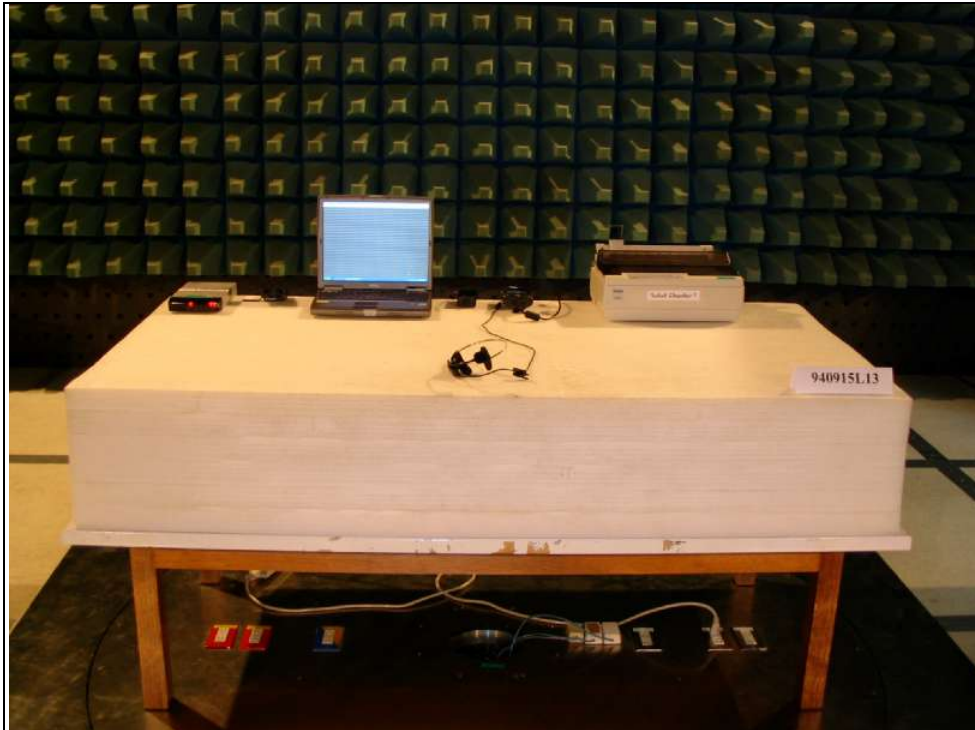
7. EMC TEST SETUP PHOTOGRAPHS OF THE TEST CONFIGURATION CONDUCTED EMISSION TEST TEST MODE A



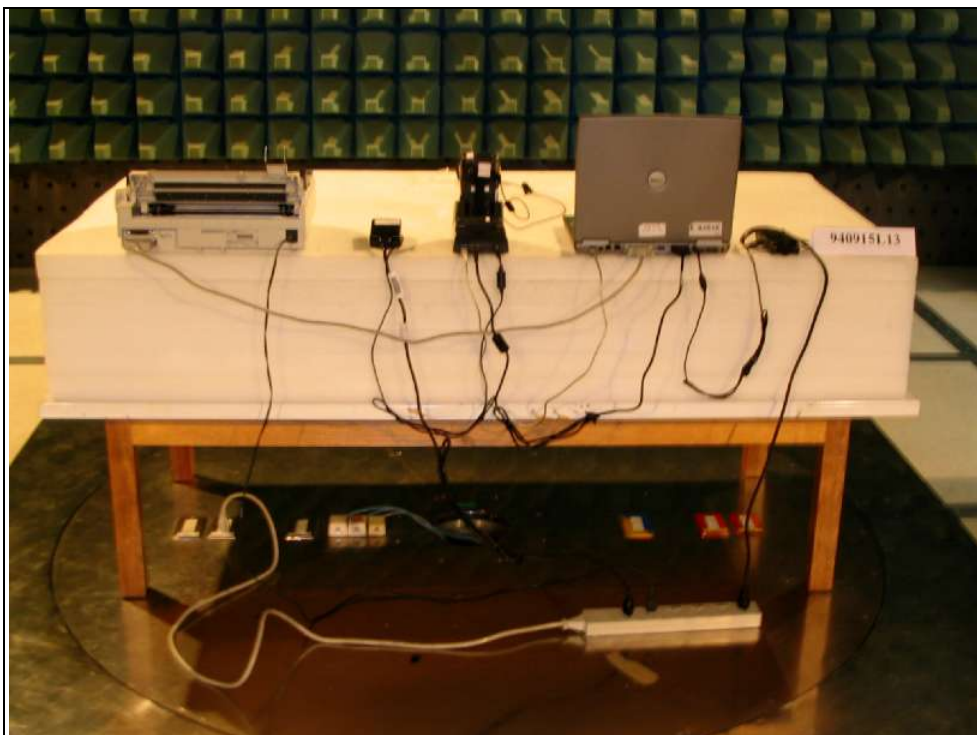
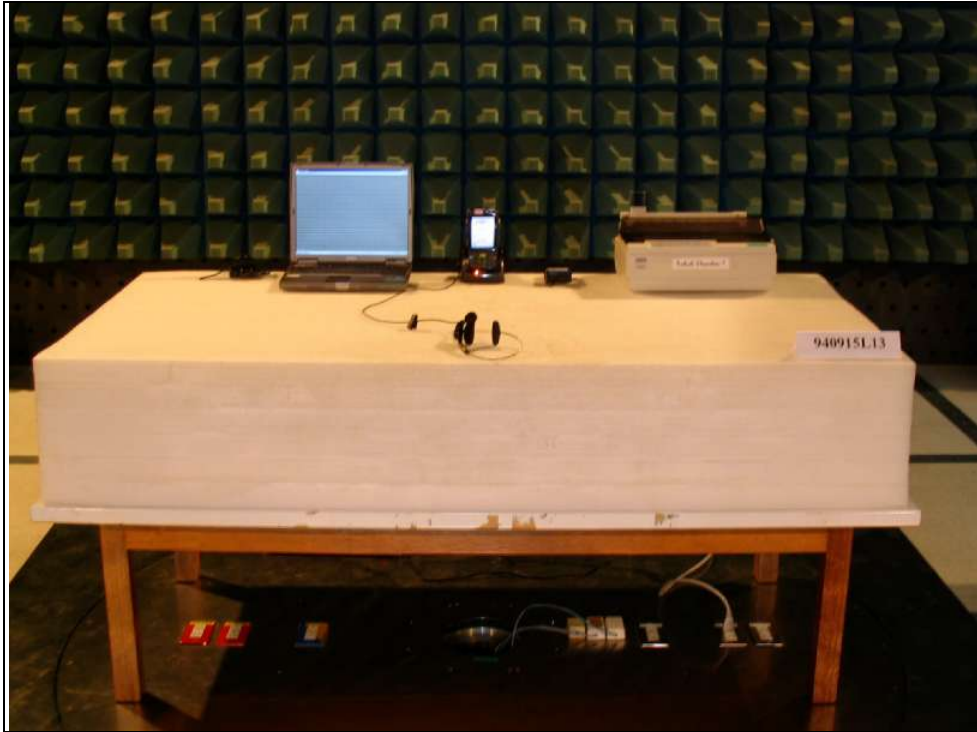
TEST MODE B



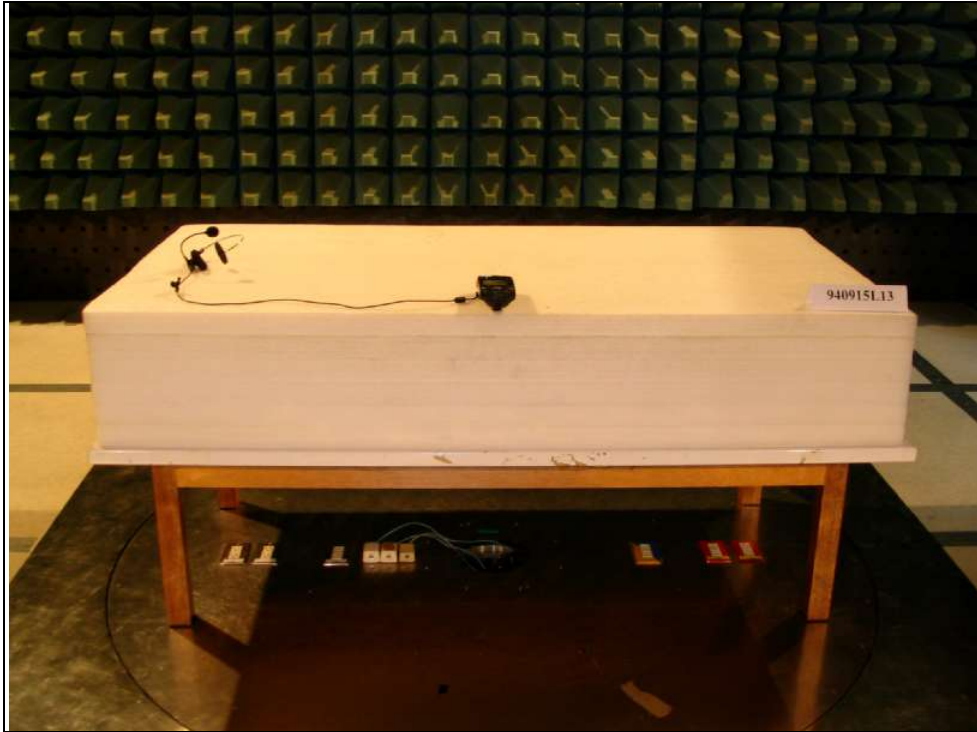
RADIATED EMISSION TEST
TEST MODE A



TEST MODE B

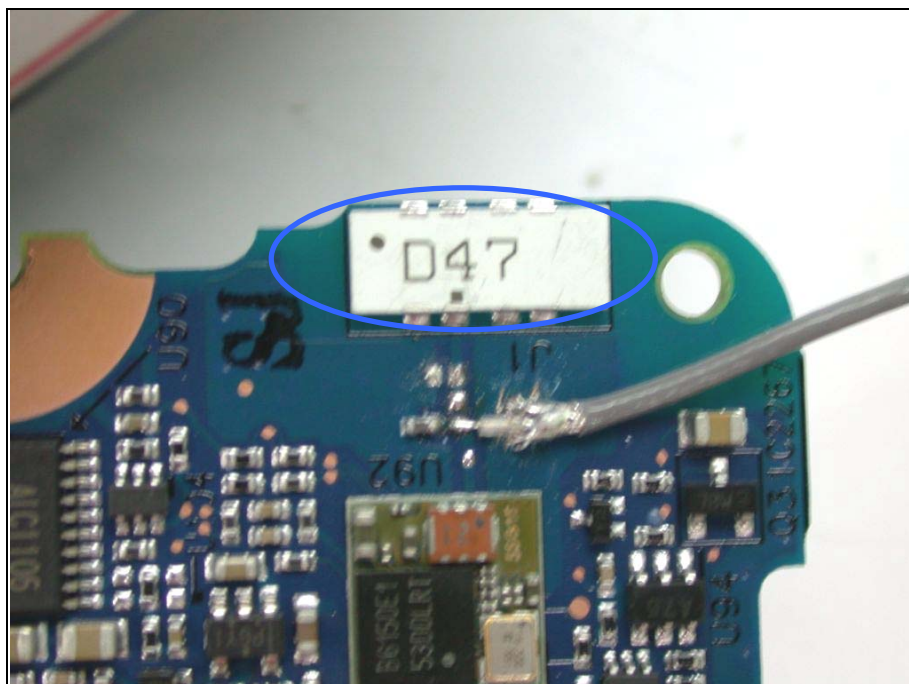


TEST MODE C



SAR Test Setup Photos

BLUETOOTH ANTENNA:



WIRELESS LAN ANTENNA: MAIN ANTENNA



AUXILIARY ANTENNA



DESCRIPTION OF ASSESSMENT POSITION

A. RIGHT HEAD POSITION:



CHEEK



TILT

B. LEFT HEAD POSITION:



CHEEK



TILT

C. BODY POSITION:

The front of the EUT with belt clip, contacted to the flat phantom with 0mm separation distance.



BODY POSITION



BELT CLIP