

Data Rate 11Mb/s

Modulation CCK

System Loss Lsys=2

$PG=Es/No+Lsys+J/S$

Desired Signal level = -60dBm.

Channel #6

Frequency	Jammer Level	J/S	PG
2445.00	-53.30	6.7	25.1
2444.95	-53.20	6.8	25.2
2444.90	-53.10	6.9	25.3
2444.85	-53.40	6.6	25
2444.80	-53.40	6.6	25
2444.75	-53.80	6.2	24.6
2444.70	-53.90	6.1	24.5
2444.65	-54.30	5.7	24.1
2444.60	-54.70	5.3	23.7
2444.55	-54.80	5.2	23.6
2444.50	-55.30	4.7	23.1
2444.45	-55.40	4.6	23
2444.40	-55.40	4.6	23
2444.35	-55.80	4.2	22.6
2444.30	-55.80	4.2	22.6
2444.25	-56.50	3.5	21.9
2444.20	-56.80	3.2	21.6
2444.15	-56.30	3.7	22.1
2444.10	-57.20	2.8	21.2
2444.05	-57.20	2.8	21.2
2444.00	-58.80	1.2	19.6
2443.95	-57.90	2.1	20.5
2443.90	-58.00	2	20.4
2443.85	-58.30	1.7	20.1
2443.80	-58.70	1.3	19.7
2443.75	-59.60	0.4	18.8
2443.70	-59.30	0.7	19.1
2443.65	-59.50	0.5	18.9
2443.60	-59.60	0.4	18.8
2443.55	-59.90	0.1	18.5
2443.50	-60.20	-0.2	18.2
2443.45	-60.10	-0.1	18.3
2443.40	-60.40	-0.4	18
2443.35	-60.70	-0.7	17.7
2443.30	-60.80	-0.8	17.6
2443.25	-61.40	-1.4	17
2443.20	-60.90	-0.9	17.5
2443.15	-61.00	-1	17.4
2443.10	-61.10	-1.1	17.3
2443.05	-61.30	-1.3	17.1
2443.00	-62.20	-2.2	16.2
2442.95	-61.90	-1.9	16.5
2442.90	-61.30	-1.3	17.1
2442.85	-61.40	-1.4	17
2442.80	-61.50	-1.5	16.9
2442.75	-61.90	-1.9	16.5
2442.70	-61.90	-1.9	16.5
2442.65	-62.10	-2.1	16.3
2442.60	-62.30	-2.3	16.1
2442.55	-62.50	-2.5	15.9
2442.50	-62.70	-2.7	15.7
2442.45	-62.70	-2.7	15.7
2442.40	-62.80	-2.8	15.6
2442.35	-63.00	-3	15.4
2442.30	-62.80	-2.8	15.6
2442.25	-62.70	-2.7	15.7
2442.20	-62.70	-2.7	15.7
2442.15	-62.80	-2.8	15.6
2442.10	-62.90	-2.9	15.5

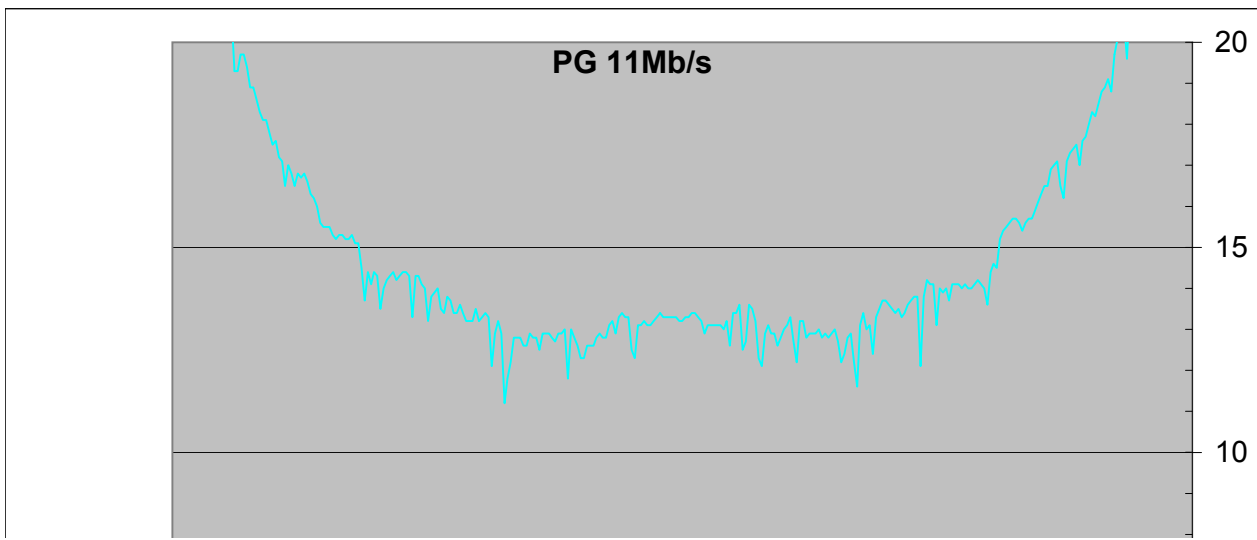
Processing Gain = 12.9

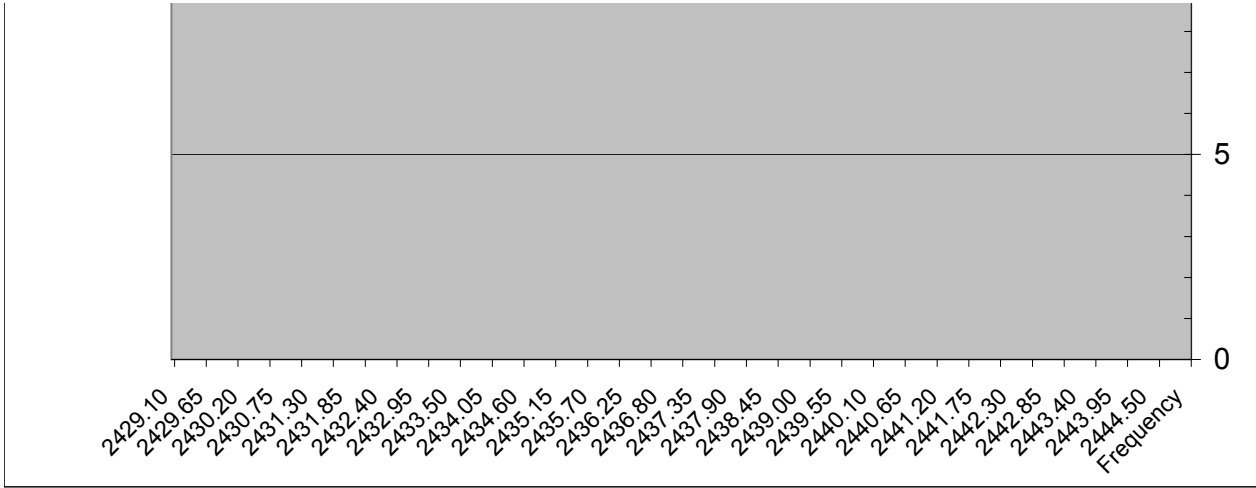
2442.05	-63.00	-3	15.4
2442.00	-63.20	-3.2	15.2
2441.95	-63.90	-3.9	14.5
2441.90	-63.80	-3.8	14.6
2441.85	-64.00	-4	14.4
2441.80	-64.80	-4.8	13.6
2441.75	-64.40	-4.4	14
2441.70	-64.30	-4.3	14.1
2441.65	-64.20	-4.2	14.2
2441.60	-64.30	-4.3	14.1
2441.55	-64.40	-4.4	14
2441.50	-64.40	-4.4	14
2441.45	-64.30	-4.3	14.1
2441.40	-64.40	-4.4	14
2441.35	-64.30	-4.3	14.1
2441.30	-64.30	-4.3	14.1
2441.25	-64.30	-4.3	14.1
2441.20	-64.70	-4.7	13.7
2441.15	-64.40	-4.4	14
2441.10	-64.50	-4.5	13.9
2441.05	-64.40	-4.4	14
2441.00	-65.30	-5.3	13.1
2440.95	-64.30	-4.3	14.1
2440.90	-64.30	-4.3	14.1
2440.85	-64.20	-4.2	14.2
2440.80	-64.60	-4.6	13.8
2440.75	-66.30	-6.3	12.1
2440.70	-64.60	-4.6	13.8
2440.65	-64.60	-4.6	13.8
2440.60	-64.70	-4.7	13.7
2440.55	-64.80	-4.8	13.6
2440.50	-65.00	-5	13.4
2440.45	-65.10	-5.1	13.3
2440.40	-64.90	-4.9	13.5
2440.35	-65.00	-5	13.4
2440.30	-64.90	-4.9	13.5
2440.25	-64.80	-4.8	13.6
2440.20	-64.70	-4.7	13.7
2440.15	-64.70	-4.7	13.7
2440.10	-64.90	-4.9	13.5
2440.05	-65.10	-5.1	13.3
2440.00	-66.00	-6	12.4
2439.95	-65.30	-5.3	13.1
2439.90	-65.40	-5.4	13
2439.85	-65.00	-5	13.4
2439.80	-65.30	-5.3	13.1
2439.75	-66.80	-6.8	11.6
2439.70	-66.20	-6.2	12.2
2439.65	-65.50	-5.5	12.9
2439.60	-65.60	-5.6	12.8
2439.55	-66.00	-6	12.4
2439.50	-66.20	-6.2	12.2
2439.45	-65.70	-5.7	12.7
2439.40	-65.40	-5.4	13
2439.35	-65.50	-5.5	12.9
2439.30	-65.60	-5.6	12.8
2439.25	-65.50	-5.5	12.9
2439.20	-65.60	-5.6	12.8
2439.15	-65.40	-5.4	13
2439.10	-65.50	-5.5	12.9
2439.05	-65.50	-5.5	12.9
2439.00	-65.50	-5.5	12.9
2438.95	-65.60	-5.6	12.8
2438.90	-65.20	-5.2	13.2
2438.85	-65.20	-5.2	13.2
2438.80	-66.20	-6.2	12.2
2438.75	-65.70	-5.7	12.7
2438.70	-65.10	-5.1	13.3
2438.65	-65.30	-5.3	13.1
2438.60	-65.40	-5.4	13
2438.55	-65.60	-5.6	12.8

2438.50	-65.80	-5.8	12.6
2438.45	-65.50	-5.5	12.9
2438.40	-65.50	-5.5	12.9
2438.35	-65.30	-5.3	13.1
2438.30	-65.50	-5.5	12.9
2438.25	-66.30	-6.3	12.1
2438.20	-66.10	-6.1	12.3
2438.15	-65.20	-5.2	13.2
2438.10	-64.90	-4.9	13.5
2438.05	-64.80	-4.8	13.6
2438.00	-65.70	-5.7	12.7
2437.95	-65.90	-5.9	12.5
2437.90	-64.80	-4.8	13.6
2437.85	-65.00	-5	13.4
2437.80	-65.00	-5	13.4
2437.75	-65.80	-5.8	12.6
2437.70	-65.20	-5.2	13.2
2437.65	-65.40	-5.4	13
2437.60	-65.30	-5.3	13.1
2437.55	-65.30	-5.3	13.1
2437.50	-65.30	-5.3	13.1
2437.45	-65.30	-5.3	13.1
2437.40	-65.30	-5.3	13.1
2437.35	-65.50	-5.5	12.9
2437.30	-65.20	-5.2	13.2
2437.25	-65.10	-5.1	13.3
2437.20	-65.00	-5	13.4
2437.15	-65.00	-5	13.4
2437.10	-65.10	-5.1	13.3
2437.05	-65.10	-5.1	13.3
2437.00	-65.20	-5.2	13.2
2436.95	-65.20	-5.2	13.2
2436.90	-65.10	-5.1	13.3
2436.85	-65.10	-5.1	13.3
2436.80	-65.10	-5.1	13.3
2436.75	-65.10	-5.1	13.3
2436.70	-65.10	-5.1	13.3
2436.65	-65.00	-5	13.4
2436.60	-65.10	-5.1	13.3
2436.55	-65.20	-5.2	13.2
2436.50	-65.30	-5.3	13.1
2436.45	-65.30	-5.3	13.1
2436.40	-65.20	-5.2	13.2
2436.35	-65.30	-5.3	13.1
2436.30	-65.30	-5.3	13.1
2436.25	-66.10	-6.1	12.3
2436.20	-65.90	-5.9	12.5
2436.15	-65.10	-5.1	13.3
2436.10	-65.10	-5.1	13.3
2436.05	-65.00	-5	13.4
2436.00	-65.10	-5.1	13.3
2435.95	-65.50	-5.5	12.9
2435.90	-65.20	-5.2	13.2
2435.85	-65.30	-5.3	13.1
2435.80	-65.60	-5.6	12.8
2435.75	-65.60	-5.6	12.8
2435.70	-65.50	-5.5	12.9
2435.65	-65.60	-5.6	12.8
2435.60	-65.80	-5.8	12.6
2435.55	-65.80	-5.8	12.6
2435.50	-65.80	-5.8	12.6
2435.45	-66.10	-6.1	12.3
2435.40	-66.10	-6.1	12.3
2435.35	-65.80	-5.8	12.6
2435.30	-65.60	-5.6	12.8
2435.25	-65.40	-5.4	13
2435.20	-66.60	-6.6	11.8
2435.15	-65.40	-5.4	13
2435.10	-65.50	-5.5	12.9
2435.05	-65.50	-5.5	12.9
2435.00	-65.70	-5.7	12.7

2434.95	-65.60	-5.6	12.8
2434.90	-65.50	-5.5	12.9
2434.85	-65.50	-5.5	12.9
2434.80	-65.50	-5.5	12.9
2434.75	-65.90	-5.9	12.5
2434.70	-65.60	-5.6	12.8
2434.65	-65.60	-5.6	12.8
2434.60	-65.50	-5.5	12.9
2434.55	-65.80	-5.8	12.6
2434.50	-65.80	-5.8	12.6
2434.45	-65.60	-5.6	12.8
2434.40	-65.60	-5.6	12.8
2434.35	-65.60	-5.6	12.8
2434.30	-66.20	-6.2	12.2
2434.25	-66.60	-6.6	11.8
2434.20	-67.20	-7.2	11.2
2434.15	-65.50	-5.5	12.9
2434.10	-65.20	-5.2	13.2
2434.05	-65.50	-5.5	12.9
2434.00	-66.30	-6.3	12.1
2433.95	-65.10	-5.1	13.3
2433.90	-65.00	-5	13.4
2433.85	-65.10	-5.1	13.3
2433.80	-65.20	-5.2	13.2
2433.75	-64.90	-4.9	13.5
2433.70	-65.20	-5.2	13.2
2433.65	-65.20	-5.2	13.2
2433.60	-65.20	-5.2	13.2
2433.55	-65.00	-5	13.4
2433.50	-64.80	-4.8	13.6
2433.45	-65.00	-5	13.4
2433.40	-65.00	-5	13.4
2433.35	-64.70	-4.7	13.7
2433.30	-64.60	-4.6	13.8
2433.25	-65.00	-5	13.4
2433.20	-64.90	-4.9	13.5
2433.15	-64.40	-4.4	14
2433.10	-64.50	-4.5	13.9
2433.05	-64.60	-4.6	13.8
2433.00	-65.20	-5.2	13.2
2432.95	-64.40	-4.4	14
2432.90	-64.30	-4.3	14.1
2432.85	-64.10	-4.1	14.3
2432.80	-64.10	-4.1	14.3
2432.75	-65.10	-5.1	13.3
2432.70	-64.10	-4.1	14.3
2432.65	-64.00	-4	14.4
2432.60	-64.00	-4	14.4
2432.55	-64.10	-4.1	14.3
2432.50	-64.20	-4.2	14.2
2432.45	-64.00	-4	14.4
2432.40	-64.10	-4.1	14.3
2432.35	-64.20	-4.2	14.2
2432.30	-64.40	-4.4	14
2432.25	-64.90	-4.9	13.5
2432.20	-64.10	-4.1	14.3
2432.15	-64.00	-4	14.4
2432.10	-64.30	-4.3	14.1
2432.05	-64.00	-4	14.4
2432.00	-64.70	-4.7	13.7
2431.95	-63.90	-3.9	14.5
2431.90	-63.30	-3.3	15.1
2431.85	-63.30	-3.3	15.1
2431.80	-63.10	-3.1	15.3
2431.75	-63.20	-3.2	15.2
2431.70	-63.20	-3.2	15.2
2431.65	-63.10	-3.1	15.3
2431.60	-63.10	-3.1	15.3
2431.55	-63.20	-3.2	15.2
2431.50	-63.10	-3.1	15.3
2431.45	-62.90	-2.9	15.5

2431.40	-62.90	-2.9	15.5
2431.35	-62.90	-2.9	15.5
2431.30	-62.80	-2.8	15.6
2431.25	-62.40	-2.4	16
2431.20	-62.20	-2.2	16.2
2431.15	-62.10	-2.1	16.3
2431.10	-61.80	-1.8	16.6
2431.05	-61.60	-1.6	16.8
2431.00	-61.70	-1.7	16.7
2430.95	-61.60	-1.6	16.8
2430.90	-61.90	-1.9	16.5
2430.85	-61.60	-1.6	16.8
2430.80	-61.40	-1.4	17
2430.75	-61.90	-1.9	16.5
2430.70	-61.30	-1.3	17.1
2430.65	-61.20	-1.2	17.2
2430.60	-60.80	-0.8	17.6
2430.55	-60.90	-0.9	17.5
2430.50	-60.60	-0.6	17.8
2430.45	-60.30	-0.3	18.1
2430.40	-60.30	-0.3	18.1
2430.35	-60.10	-0.1	18.3
2430.30	-59.80	0.2	18.6
2430.25	-59.50	0.5	18.9
2430.20	-59.50	0.5	18.9
2430.15	-59.00	1	19.4
2430.10	-58.70	1.3	19.7
2430.05	-58.70	1.3	19.7
2430.00	-59.10	0.9	19.3
2429.95	-59.10	0.9	19.3
2429.90	-57.60	2.4	20.8
2429.85	-57.40	2.6	21
2429.80	-57.40	2.6	21
2429.75	-58.30	1.7	20.1
2429.70	-56.90	3.1	21.5
2429.65	-56.70	3.3	21.7
2429.60	-56.70	3.3	21.7
2429.55	-56.40	3.6	22
2429.50	-56.50	3.5	21.9
2429.45	-56.30	3.7	22.1
2429.40	-55.90	4.1	22.5
2429.35	-55.50	4.5	22.9
2429.30	-55.40	4.6	23
2429.25	-54.80	5.2	23.6
2429.20	-54.20	5.8	24.2
2429.15	-54.00	6	24.4
2429.10	-53.90	6.1	24.5
2429.05	-54.00	6	24.4
2429.00	-54.30	5.7	24.1





Channel 6 Data Rate 11Mb/s sorted results

Frequency PG

2434.20	11.2
2439.75	11.6
2435.20	11.8
2434.25	11.8
2440.75	12.1
2438.25	12.1
2434.00	12.1
2439.70	12.2
2439.50	12.2
2438.80	12.2
2434.30	12.2
2438.20	12.3
2436.25	12.3
2435.45	12.3
2435.40	12.3
2440.00	12.4
2439.55	12.4
2437.95	12.5
2436.20	12.5
2434.75	12.5
2438.50	12.6
2437.75	12.6
2435.60	12.6
2435.55	12.6
2435.50	12.6
2435.35	12.6
2434.55	12.6
2434.50	12.6
2439.45	12.7
2438.75	12.7
2438.00	12.7
2435.00	12.7
2439.60	12.8
2439.30	12.8
2439.20	12.8
2438.95	12.8
2438.55	12.8
2435.80	12.8
2435.75	12.8
2435.65	12.8
2435.30	12.8
2434.95	12.8
2434.70	12.8
2434.65	12.8
2434.45	12.8
2434.40	12.8
2434.35	12.8
2439.65	12.9
2439.35	12.9
2439.25	12.9
2439.10	12.9
2439.05	12.9

2439.00	12.9
2438.45	12.9
2438.40	12.9
2438.30	12.9
2437.35	12.9
2435.95	12.9
2435.70	12.9
2435.10	12.9
2435.05	12.9
2434.90	12.9
2434.85	12.9
2434.80	12.9
2434.60	12.9

2434.15 12.9 Processing Gain 11Mb/s

2434.05	12.9
2439.90	13
2439.40	13
2439.15	13
2438.60	13
2437.65	13
2435.25	13
2435.15	13
2441.00	13.1
2439.95	13.1
2439.80	13.1
2438.65	13.1
2438.35	13.1
2437.60	13.1
2437.55	13.1
2437.50	13.1
2437.45	13.1
2437.40	13.1
2436.50	13.1
2436.45	13.1
2436.35	13.1
2436.30	13.1
2435.85	13.1
2438.90	13.2
2438.85	13.2
2438.15	13.2
2437.70	13.2
2437.30	13.2
2437.00	13.2
2436.95	13.2
2436.55	13.2
2436.40	13.2
2435.90	13.2
2434.10	13.2
2433.80	13.2
2433.70	13.2
2433.65	13.2
2433.60	13.2
2433.00	13.2
2440.45	13.3

2440.05	13.3
2438.70	13.3
2437.25	13.3
2437.10	13.3
2437.05	13.3
2436.90	13.3
2436.85	13.3
2436.80	13.3
2436.75	13.3
2436.70	13.3
2436.60	13.3
2436.15	13.3
2436.10	13.3
2436.00	13.3
2433.95	13.3
2433.85	13.3
2432.75	13.3
2440.50	13.4
2440.35	13.4
2439.85	13.4
2437.85	13.4
2437.80	13.4
2437.20	13.4
2437.15	13.4
2436.65	13.4
2436.05	13.4
2433.90	13.4
2433.55	13.4
2433.45	13.4
2433.40	13.4
2433.25	13.4
2440.40	13.5
2440.30	13.5
2440.10	13.5
2438.10	13.5
2433.75	13.5
2433.20	13.5
2432.25	13.5
2441.80	13.6
2440.55	13.6
2440.25	13.6
2438.05	13.6
2437.90	13.6
2433.50	13.6
2441.20	13.7
2440.60	13.7
2440.20	13.7
2440.15	13.7
2433.35	13.7
2432.00	13.7
2440.80	13.8
2440.70	13.8
2440.65	13.8
2433.30	13.8
2433.05	13.8

2441.10	13.9
2433.10	13.9
2441.75	14
2441.55	14
2441.50	14
2441.40	14
2441.15	14
2441.05	14
2433.15	14
2432.95	14
2432.30	14
2441.70	14.1
2441.60	14.1
2441.45	14.1
2441.35	14.1
2441.30	14.1
2441.25	14.1
2440.95	14.1
2440.90	14.1
2432.90	14.1
2432.10	14.1
2441.65	14.2
2440.85	14.2
2432.50	14.2
2432.35	14.2
2432.85	14.3
2432.80	14.3
2432.70	14.3
2432.55	14.3
2432.40	14.3
2432.20	14.3
2441.85	14.4
2432.65	14.4
2432.60	14.4
2432.45	14.4
2432.15	14.4
2432.05	14.4
2441.95	14.5
2431.95	14.5
2441.90	14.6
2431.90	15.1
2431.85	15.1
2442.00	15.2
2431.75	15.2
2431.70	15.2
2431.55	15.2
2431.80	15.3
2431.65	15.3
2431.60	15.3
2431.50	15.3
2442.35	15.4
2442.05	15.4
2442.10	15.5
2431.45	15.5
2431.40	15.5

2431.35	15.5
2442.40	15.6
2442.30	15.6
2442.15	15.6
2431.30	15.6
2442.50	15.7
2442.45	15.7
2442.25	15.7
2442.20	15.7
2442.55	15.9
2431.25	16
2442.60	16.1
2443.00	16.2
2431.20	16.2
2442.65	16.3
2431.15	16.3
2442.95	16.5
2442.75	16.5
2442.70	16.5
2430.90	16.5
2430.75	16.5
2431.10	16.6
2431.00	16.7
2431.05	16.8
2430.95	16.8
2430.85	16.8
2442.80	16.9
2443.25	17
2442.85	17
2430.80	17
2443.05	17.1
2442.90	17.1
2430.70	17.1
2430.65	17.2
2443.10	17.3
2443.15	17.4
2443.20	17.5
2430.55	17.5
2443.30	17.6
2430.60	17.6
2443.35	17.7
2430.50	17.8
2443.40	18
2430.45	18.1
2430.40	18.1
2443.50	18.2
2443.45	18.3
2430.35	18.3
2443.55	18.5
2430.30	18.6
2443.75	18.8
2443.60	18.8
2443.65	18.9
2430.25	18.9
2430.20	18.9

2443.70	19.1
2430.00	19.3
2429.95	19.3
2430.15	19.4
2444.00	19.6
2443.80	19.7
2430.10	19.7
2430.05	19.7
2443.85	20.1
2429.75	20.1
2443.90	20.4
2443.95	20.5
2429.90	20.8
2429.85	21
2429.80	21
2444.10	21.2
2444.05	21.2
2429.70	21.5
2444.20	21.6
2429.65	21.7
2429.60	21.7
2444.25	21.9
2429.50	21.9
2429.55	22
2444.15	22.1
2429.45	22.1
2429.40	22.5
2444.35	22.6
2444.30	22.6
2429.35	22.9
2444.45	23
2444.40	23
2429.30	23
2444.50	23.1
2444.55	23.6
2429.25	23.6
2444.60	23.7
2444.65	24.1
2429.00	24.1
2429.20	24.2
2429.15	24.4
2429.05	24.4
2444.70	24.5
2429.10	24.5
2444.75	24.6
2444.85	25
2444.80	25
2445.00	25.1
2444.95	25.2
2444.90	25.3

Data Rate 5.5Mb/s

Modulation CCK
System Loss Lsys=2
PG=Es/No+Lsys+J/S
Desired Signal level = -60dBm
Channel #6

Frequency	Jammer Level	J/S	PG
2445.00	-52.8	7.2	22.6
2444.95	-52.9	7.1	22.5
2444.90	-52.9	7.1	22.5
2444.85	-52.9	7.1	22.5
2444.80	-52.8	7.2	22.6
2444.75	-52.6	7.4	22.8
2444.70	-52.5	7.5	22.9
2444.65	-53	7	22.4
0.00	-53.6	6.4	21.8
2444.55	-54.1	5.9	21.3
2444.50	-54.3	5.7	21.1
2444.45	-54.5	5.5	20.9
2444.40	-54.5	5.5	20.9
2444.35	-54.1	5.9	21.3
2444.30	-53.8	6.2	21.6
2444.25	-53.7	6.3	21.7
2444.20	-53.6	6.4	21.8
2444.15	-53.6	6.4	21.8
2444.10	-53.8	6.2	21.6
2444.05	-53.9	6.1	21.5
2444.00	-56	4	19.4
2443.95	-54.3	5.7	21.1
2443.90	-54.2	5.8	21.2
2443.85	-54.3	5.7	21.1
2443.80	-54.6	5.4	20.8
2443.75	-54.8	5.2	20.6
2443.70	-54.7	5.3	20.7
2443.65	-55.1	4.9	20.3
2443.60	-55.3	4.7	20.1
2443.55	-55.8	4.2	19.6
2443.50	-56.3	3.7	19.1
2443.45	-56.7	3.3	18.7
2443.40	-56.4	3.6	19
2443.35	-56.1	3.9	19.3
2443.30	-56.5	3.5	18.9
2443.25	-55.8	4.2	19.6
2443.20	-56.2	3.8	19.2
2443.15	-56.5	3.5	18.9
2443.10	-56.6	3.4	18.8
2443.05	-56.7	3.3	18.7
2443.00	-56.9	3.1	18.5
2442.95	-57	3	18.4
2442.90	-56.9	3.1	18.5
2442.85	-57	3	18.4
2442.80	-56.6	3.4	18.8
2442.75	-57	3	18.4
2442.70	-57	3	18.4
2442.65	-56.9	3.1	18.5
2442.60	-56.6	3.4	18.8
2442.55	-56.5	3.5	18.9
2442.50	-56.6	3.4	18.8
2442.45	-56.8	3.2	18.6
2442.40	-56.9	3.1	18.5
2442.35	-57.2	2.8	18.2
2442.30	-57.5	2.5	17.9
2442.25	-58	2	17.4
2442.20	-58.1	1.9	17.3
2442.15	-58.3	1.7	17.1
2442.10	-58.5	1.5	16.9
2442.05	-58.7	1.3	16.7
2442.00	-58.9	1.1	16.5
2441.95	-59	1	16.4

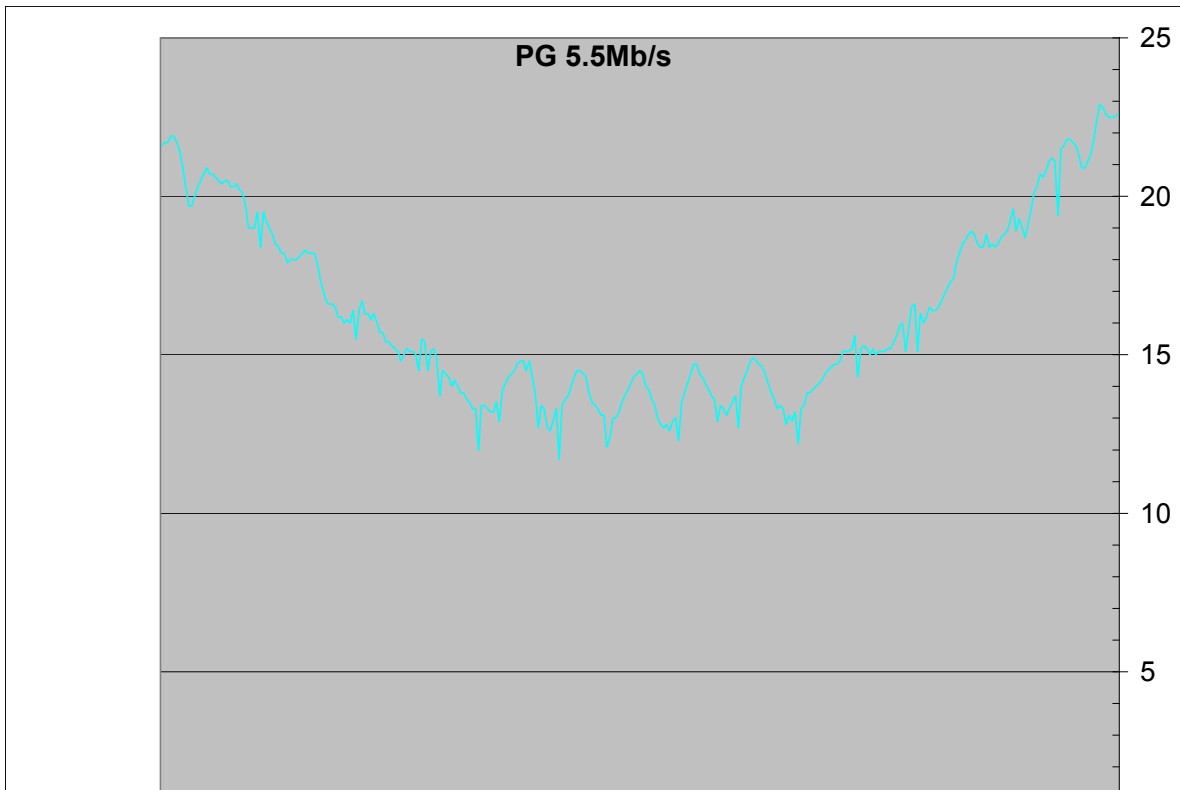
Processing Gain = 13.7

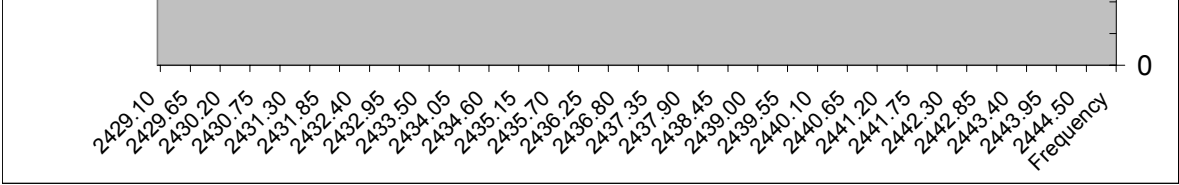
2441.90	-59	1	16.4
2441.85	-58.9	1.1	16.5
2441.80	-59.2	0.8	16.2
2441.75	-59.4	0.6	16
2441.70	-59.1	0.9	16.3
2441.65	-60.3	-0.3	15.1
2441.60	-58.8	1.2	16.6
2441.55	-58.9	1.1	16.5
2441.50	-59.6	0.4	15.8
2441.45	-60.3	-0.3	15.1
2441.40	-59.4	0.6	16
2441.35	-59.5	0.5	15.9
2441.30	-59.8	0.2	15.6
2441.25	-60	0	15.4
2441.20	-60.2	-0.2	15.2
2441.15	-60.2	-0.2	15.2
2441.10	-60.3	-0.3	15.1
2441.05	-60.3	-0.3	15.1
2441.00	-60.3	-0.3	15.1
2440.95	-60.4	-0.4	15
2440.90	-60.2	-0.2	15.2
2440.85	-60.4	-0.4	15
2440.80	-60.2	-0.2	15.2
2440.75	-60.1	-0.1	15.3
2440.70	-60.2	-0.2	15.2
2440.65	-61.1	-1.1	14.3
2440.60	-59.8	0.2	15.6
2440.55	-60.2	-0.2	15.2
2440.50	-60.3	-0.3	15.1
2440.45	-60.3	-0.3	15.1
2440.40	-60.3	-0.3	15.1
2440.35	-60.6	-0.6	14.8
2440.30	-60.7	-0.7	14.7
2440.25	-60.7	-0.7	14.7
2440.20	-60.8	-0.8	14.6
2440.15	-60.9	-0.9	14.5
2440.10	-61	-1	14.4
2440.05	-61.2	-1.2	14.2
2440.00	-61.3	-1.3	14.1
2439.95	-61.4	-1.4	14
2439.90	-61.5	-1.5	13.9
2439.85	-61.6	-1.6	13.8
2439.80	-61.6	-1.6	13.8
2439.75	-62	-2	13.4
2439.70	-62.1	-2.1	13.3
2439.65	-63.2	-3.2	12.2
2439.60	-62.2	-2.2	13.2
2439.55	-62.5	-2.5	12.9
2439.50	-62.3	-2.3	13.1
2439.45	-62.6	-2.6	12.8
2439.40	-62.1	-2.1	13.3
2439.35	-62	-2	13.4
2439.30	-62.1	-2.1	13.3
2439.25	-61.8	-1.8	13.6
2439.20	-61.6	-1.6	13.8
2439.15	-61.3	-1.3	14.1
2439.10	-61	-1	14.4
2439.05	-60.8	-0.8	14.6
2439.00	-60.7	-0.7	14.7
2438.95	-60.6	-0.6	14.8
2438.90	-60.5	-0.5	14.9
2438.85	-60.6	-0.6	14.8
2438.80	-60.9	-0.9	14.5
2438.75	-61.1	-1.1	14.3
2438.70	-61.4	-1.4	14
2438.65	-62.7	-2.7	12.7
2438.60	-61.7	-1.7	13.7
2438.55	-61.9	-1.9	13.5
2438.50	-62.1	-2.1	13.3
2438.45	-62.3	-2.3	13.1
2438.40	-62.1	-2.1	13.3
2438.35	-62	-2	13.4
2438.30	-62.5	-2.5	12.9
2438.25	-61.8	-1.8	13.6

2438.20	-61.7	-1.7	13.7
2438.15	-61.5	-1.5	13.9
2438.10	-61.3	-1.3	14.1
2438.05	-61.1	-1.1	14.3
2438.00	-61	-1	14.4
2437.95	-60.7	-0.7	14.7
2437.90	-60.7	-0.7	14.7
2437.85	-61	-1	14.4
2437.80	-61.3	-1.3	14.1
2437.75	-61.6	-1.6	13.8
2437.70	-61.9	-1.9	13.5
2437.65	-63.1	-3.1	12.3
2437.60	-62.4	-2.4	13
2437.55	-62.5	-2.5	12.9
2437.50	-62.8	-2.8	12.6
2437.45	-62.6	-2.6	12.8
2437.40	-62.7	-2.7	12.7
2437.35	-62.6	-2.6	12.8
2437.30	-62.4	-2.4	13
2437.25	-62	-2	13.4
2437.20	-61.8	-1.8	13.6
2437.15	-61.5	-1.5	13.9
2437.10	-61.4	-1.4	14
2437.05	-61	-1	14.4
2437.00	-60.9	-0.9	14.5
2436.95	-61	-1	14.4
2436.90	-61.1	-1.1	14.3
2436.85	-61.3	-1.3	14.1
2436.80	-61.5	-1.5	13.9
2436.75	-61.7	-1.7	13.7
2436.70	-61.9	-1.9	13.5
2436.65	-62.2	-2.2	13.2
2436.60	-62.4	-2.4	13
2436.55	-62.4	-2.4	13
2436.50	-63	-3	12.4
2436.45	-63.3	-3.3	12.1
2436.40	-62.3	-2.3	13.1
2436.35	-62.3	-2.3	13.1
2436.30	-62.1	-2.1	13.3
2436.25	-62	-2	13.4
2436.20	-61.9	-1.9	13.5
2436.15	-61.6	-1.6	13.8
2436.10	-61.1	-1.1	14.3
2436.05	-61	-1	14.4
2436.00	-60.9	-0.9	14.5
2435.95	-60.9	-0.9	14.5
2435.90	-61.1	-1.1	14.3
2435.85	-61.4	-1.4	14
2435.80	-61.7	-1.7	13.7
2435.75	-61.8	-1.8	13.6
2435.70	-62	-2	13.4
2435.65	-63.7	-3.7	11.7
2435.60	-62.1	-2.1	13.3
2435.55	-62.5	-2.5	12.9
2435.50	-62.8	-2.8	12.6
2435.45	-62.7	-2.7	12.7
2435.40	-62.1	-2.1	13.3
2435.35	-62	-2	13.4
2435.30	-62.7	-2.7	12.7
2435.25	-61.6	-1.6	13.8
2435.20	-61.1	-1.1	14.3
2435.15	-60.6	-0.6	14.8
2435.10	-60.9	-0.9	14.5
2435.05	-60.6	-0.6	14.8
2435.00	-60.6	-0.6	14.8
2434.95	-60.7	-0.7	14.7
2434.90	-60.9	-0.9	14.5
2434.85	-61	-1	14.4
2434.80	-61.1	-1.1	14.3
2434.75	-61.3	-1.3	14.1
2434.70	-61.5	-1.5	13.9
2434.65	-62.5	-2.5	12.9
2434.60	-61.9	-1.9	13.5
2434.55	-62.2	-2.2	13.2

2434.50	-62.2	-2.2	13.2
2434.45	-62.1	-2.1	13.3
2434.40	-62	-2	13.4
2434.35	-62	-2	13.4
2434.30	-63.4	-3.4	12
2434.25	-62.1	-2.1	13.3
2434.20	-62.1	-2.1	13.3
2434.15	-61.9	-1.9	13.5
2434.10	-61.8	-1.8	13.6
2434.05	-61.6	-1.6	13.8
2434.00	-61.6	-1.6	13.8
2433.95	-61.4	-1.4	14
2433.90	-61.2	-1.2	14.2
2433.85	-61.4	-1.4	14
2433.80	-61.1	-1.1	14.3
2433.75	-61	-1	14.4
2433.70	-60.9	-0.9	14.5
2433.65	-61.7	-1.7	13.7
2433.60	-60.5	-0.5	14.9
2433.55	-60.2	-0.2	15.2
2433.50	-60.3	-0.3	15.1
2433.45	-60.9	-0.9	14.5
2433.40	-60	0	15.4
2433.35	-59.9	0.1	15.5
2433.30	-60.9	-0.9	14.5
2433.25	-60.4	-0.4	15
2433.20	-60.3	-0.3	15.1
2433.15	-60.3	-0.3	15.1
2433.10	-60.2	-0.2	15.2
2433.05	-60.4	-0.4	15
2433.00	-60.6	-0.6	14.8
2432.95	-60.3	-0.3	15.1
2432.90	-60.2	-0.2	15.2
2432.85	-60.1	-0.1	15.3
2432.80	-60	0	15.4
2432.75	-60	0	15.4
2432.70	-59.7	0.3	15.7
2432.65	-59.7	0.3	15.7
2432.60	-59.4	0.6	16
2432.55	-59.1	0.9	16.3
2432.50	-59.3	0.7	16.1
2432.45	-59.1	0.9	16.3
2432.40	-59.1	0.9	16.3
2432.35	-58.7	1.3	16.7
2432.30	-59	1	16.4
2432.25	-59.9	0.1	15.5
2432.20	-59	1	16.4
2432.15	-59.4	0.6	16
2432.10	-59.3	0.7	16.1
2432.05	-59.4	0.6	16
2432.00	-59.2	0.8	16.2
2431.95	-59.2	0.8	16.2
2431.90	-58.9	1.1	16.5
2431.85	-58.8	1.2	16.6
2431.80	-58.8	1.2	16.6
2431.75	-58.7	1.3	16.7
2431.70	-58.4	1.6	17
2431.65	-58	2	17.4
2431.60	-57.5	2.5	17.9
2431.55	-57.2	2.8	18.2
2431.50	-57.2	2.8	18.2
2431.45	-57.2	2.8	18.2
2431.40	-57.1	2.9	18.3
2431.35	-57.2	2.8	18.2
2431.30	-57.3	2.7	18.1
2431.25	-57.4	2.6	18
2431.20	-57.4	2.6	18
2431.15	-57.4	2.6	18
2431.10	-57.5	2.5	17.9
2431.05	-57.2	2.8	18.2
2431.00	-57.2	2.8	18.2
2430.95	-57	3	18.4
2430.90	-56.9	3.1	18.5
2430.85	-56.6	3.4	18.8

2430.80	-56.4	3.6	19
2430.75	-56.2	3.8	19.2
2430.70	-55.9	4.1	19.5
2430.65	-57	3	18.4
2430.60	-55.9	4.1	19.5
2430.55	-56.4	3.6	19
2430.50	-56.4	3.6	19
2430.45	-56.4	3.6	19
2430.40	-55.7	4.3	19.7
2430.35	-55.3	4.7	20.1
2430.30	-55.2	4.8	20.2
2430.25	-55	5	20.4
2430.20	-55.1	4.9	20.3
2430.15	-55.1	4.9	20.3
2430.10	-54.9	5.1	20.5
2430.05	-54.9	5.1	20.5
2430.00	-55	5	20.4
2429.95	-54.9	5.1	20.5
2429.90	-54.8	5.2	20.6
2429.85	-54.7	5.3	20.7
2429.80	-54.7	5.3	20.7
2429.75	-54.5	5.5	20.9
2429.70	-54.7	5.3	20.7
2429.65	-54.9	5.1	20.5
2429.60	-55.1	4.9	20.3
2429.55	-55.4	4.6	20
2429.50	-55.7	4.3	19.7
2429.45	-55.7	4.3	19.7
2429.40	-55.1	4.9	20.3
2429.35	-54.5	5.5	20.9
2429.30	-54	6	21.4
2429.25	-53.7	6.3	21.7
2429.20	-53.5	6.5	21.9
2429.15	-53.5	6.5	21.9
2429.10	-53.7	6.3	21.7
2429.05	-53.7	6.3	21.7
2429.00	-53.8	6.2	21.6





Channel 6 Data Rate 5.5Mb/s sorted results

Frequency PG

2435.65	11.7
2434.30	12
2436.45	12.1
2439.65	12.2
2437.65	12.3
2436.50	12.4
2437.50	12.6
2435.50	12.6
2438.65	12.7
2437.40	12.7
2435.45	12.7
2435.30	12.7
2439.45	12.8
2437.45	12.8
2437.35	12.8
2439.55	12.9
2438.30	12.9
2437.55	12.9
2435.55	12.9
2434.65	12.9
2437.60	13
2437.30	13
2436.60	13
2436.55	13
2439.50	13.1
2438.45	13.1
2436.40	13.1
2436.35	13.1
2439.60	13.2
2436.65	13.2
2434.55	13.2
2434.50	13.2
2439.70	13.3
2439.40	13.3
2439.30	13.3
2438.50	13.3
2438.40	13.3
2436.30	13.3
2435.60	13.3
2435.40	13.3
2434.45	13.3
2434.25	13.3
2434.20	13.3
2439.75	13.4
2439.35	13.4
2438.35	13.4
2437.25	13.4
2436.25	13.4
2435.70	13.4
2435.35	13.4
2434.40	13.4

2434.35	13.4
2438.55	13.5
2437.70	13.5
2436.70	13.5
2436.20	13.5
2434.60	13.5
2434.15	13.5
2439.25	13.6
2438.25	13.6
2437.20	13.6
2435.75	13.6
2434.10	13.6
2438.60	13.7
2438.20	13.7

2436.75 13.7 Processing Gain 5.5MB/s

2435.80	13.7
2433.65	13.7
2439.85	13.8
2439.80	13.8
2439.20	13.8
2437.75	13.8
2436.15	13.8
2435.25	13.8
2434.05	13.8
2434.00	13.8
2439.90	13.9
2438.15	13.9
2437.15	13.9
2436.80	13.9
2434.70	13.9
2439.95	14
2438.70	14
2437.10	14
2435.85	14
2433.95	14
2433.85	14
2440.00	14.1
2439.15	14.1
2438.10	14.1
2437.80	14.1
2436.85	14.1
2434.75	14.1
2440.05	14.2
2433.90	14.2
2440.65	14.3
2438.75	14.3
2438.05	14.3
2436.90	14.3
2436.10	14.3
2435.90	14.3
2435.20	14.3
2434.80	14.3
2433.80	14.3
2440.10	14.4

2439.10	14.4
2438.00	14.4
2437.85	14.4
2437.05	14.4
2436.95	14.4
2436.05	14.4
2434.85	14.4
2433.75	14.4
2440.15	14.5
2438.80	14.5
2437.00	14.5
2436.00	14.5
2435.95	14.5
2435.10	14.5
2434.90	14.5
2433.70	14.5
2433.45	14.5
2433.30	14.5
2440.20	14.6
2439.05	14.6
2440.30	14.7
2440.25	14.7
2439.00	14.7
2437.95	14.7
2437.90	14.7
2434.95	14.7
2440.35	14.8
2438.95	14.8
2438.85	14.8
2435.15	14.8
2435.05	14.8
2435.00	14.8
2433.00	14.8
2438.90	14.9
2433.60	14.9
2440.95	15
2440.85	15
2433.25	15
2433.05	15
2441.65	15.1
2441.45	15.1
2441.10	15.1
2441.05	15.1
2441.00	15.1
2440.50	15.1
2440.45	15.1
2440.40	15.1
2433.50	15.1
2433.20	15.1
2433.15	15.1
2432.95	15.1
2441.20	15.2
2441.15	15.2
2440.90	15.2
2440.80	15.2

2440.70	15.2
2440.55	15.2
2433.55	15.2
2433.10	15.2
2432.90	15.2
2440.75	15.3
2432.85	15.3
2441.25	15.4
2433.40	15.4
2432.80	15.4
2432.75	15.4
2433.35	15.5
2432.25	15.5
2441.30	15.6
2440.60	15.6
2432.70	15.7
2432.65	15.7
2441.50	15.8
2441.35	15.9
2441.75	16
2441.40	16
2432.60	16
2432.15	16
2432.05	16
2432.50	16.1
2432.10	16.1
2441.80	16.2
2432.00	16.2
2431.95	16.2
2441.70	16.3
2432.55	16.3
2432.45	16.3
2432.40	16.3
2441.95	16.4
2441.90	16.4
2432.30	16.4
2432.20	16.4
2442.00	16.5
2441.85	16.5
2441.55	16.5
2431.90	16.5
2441.60	16.6
2431.85	16.6
2431.80	16.6
2442.05	16.7
2432.35	16.7
2431.75	16.7
2442.10	16.9
2431.70	17
2442.15	17.1
2442.20	17.3
2442.25	17.4
2431.65	17.4
2442.30	17.9

2431.60	17.9
2431.10	17.9
2431.25	18
2431.20	18
2431.15	18
2431.30	18.1
2442.35	18.2
2431.55	18.2
2431.50	18.2
2431.45	18.2
2431.35	18.2
2431.05	18.2
2431.00	18.2
2431.40	18.3
2442.95	18.4
2442.85	18.4
2442.75	18.4
2442.70	18.4
2430.95	18.4
2430.65	18.4
2443.00	18.5
2442.90	18.5
2442.65	18.5
2442.40	18.5
2430.90	18.5
2442.45	18.6
2443.45	18.7
2443.05	18.7
2443.10	18.8
2442.80	18.8
2442.60	18.8
2442.50	18.8
2430.85	18.8
2443.30	18.9
2443.15	18.9
2442.55	18.9
2443.40	19
2430.80	19
2430.55	19
2430.50	19
2430.45	19
2443.50	19.1
2443.20	19.2
2430.75	19.2
2443.35	19.3
2444.00	19.4
2430.70	19.5
2430.60	19.5
2443.55	19.6
2443.25	19.6
2430.40	19.7
2429.50	19.7
2429.45	19.7
2429.55	20
2443.60	20.1

2430.35	20.1
2430.30	20.2
2443.65	20.3
2430.20	20.3
2430.15	20.3
2429.60	20.3
2429.40	20.3
2430.25	20.4
2430.00	20.4
2430.10	20.5
2430.05	20.5
2429.95	20.5
2429.65	20.5
2443.75	20.6
2429.90	20.6
2443.70	20.7
2429.85	20.7
2429.80	20.7
2429.70	20.7
2443.80	20.8
2444.45	20.9
2444.40	20.9
2429.75	20.9
2429.35	20.9
2444.50	21.1
2443.95	21.1
2443.85	21.1
2443.90	21.2
2444.55	21.3
2444.35	21.3
2429.30	21.4
2444.05	21.5
2444.30	21.6
2444.10	21.6
2429.00	21.6
2444.25	21.7
2429.25	21.7
2429.10	21.7
2429.05	21.7
0.00	21.8
2444.20	21.8
2444.15	21.8
2429.20	21.9
2429.15	21.9
2444.65	22.4
2444.95	22.5
2444.90	22.5
2444.85	22.5
2445.00	22.6
2444.80	22.6
2444.75	22.8
2444.70	22.9

Data Rate 2Mb/s

Modulation QPSK
System Loss Lsys=2
PG=Es/No+Lsys+J/S
Desired Signal level = -60dBm
Channel #6

Frequency	Jammer Level	J/S	PG
2445.00	-53	7	22.3
2444.95	-53	7	22.3
2444.90	-52.9	7.1	22.4
2444.85	-52.7	7.3	22.6
2444.80	-52.7	7.3	22.6
2444.75	-52.8	7.2	22.5
2444.70	-52.8	7.2	22.5
2444.65	-53.3	6.7	22
0.00	-53.9	6.1	21.4
2444.55	-54.6	5.4	20.7
2444.50	-55	5	20.3
2444.45	-55.2	4.8	20.1
2444.40	-54.9	5.1	20.4
2444.35	-54.6	5.4	20.7
2444.30	-54.8	5.2	20.5
2444.25	-56.1	3.9	19.2
2444.20	-54.7	5.3	20.6
2444.15	-54.2	5.8	21.1
2444.10	-54.2	5.8	21.1
2444.05	-55	5	20.3
2444.00	-55.1	4.9	20.2
2443.95	-55	5	20.3
2443.90	-54.9	5.1	20.4
2443.85	-54.9	5.1	20.4
2443.80	-55.8	4.2	19.5
2443.75	-57.1	2.9	18.2
2443.70	-57.1	2.9	18.2
2443.65	-57.8	2.2	17.5
2443.60	-57.4	2.6	17.9
2443.55	-56.2	3.8	19.1
2443.50	-57.4	2.6	17.9
2443.45	-57.4	2.6	17.9
2443.40	-57.5	2.5	17.8
2443.35	-58.4	1.6	16.9
2443.30	-58.9	1.1	16.4
2443.25	-60.2	-0.2	15.1
2443.20	-59.2	0.8	16.1
2443.15	-58	2	17.3
2443.10	-58	2	17.3
2443.05	-58.6	1.4	16.7
2443.00	-58.2	1.8	17.1
2442.95	-58.2	1.8	17.1
2442.90	-56.8	3.2	18.5
2442.85	-56	4	19.3
2442.80	-56.2	3.8	19.1
2442.75	-56.8	3.2	18.5
2442.70	-56.4	3.6	18.9
2442.65	-55.2	4.8	20.1
2442.60	-53.2	6.8	22.1
2442.55	-49.8	10.2	25.5

Processing Gain = 13.8

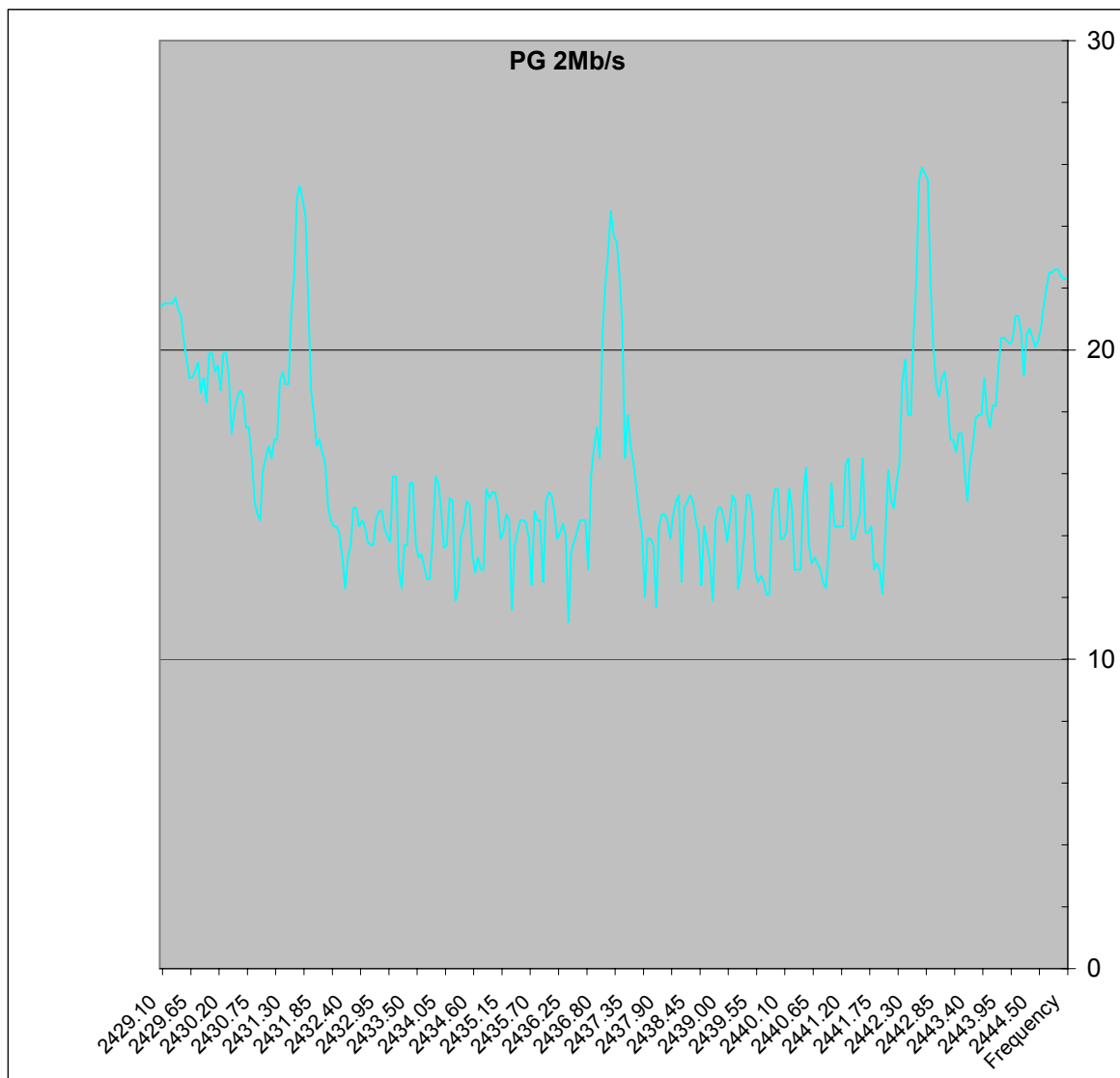
2442.50	-49.6	10.4	25.7
2442.45	-49.4	10.6	25.9
2442.40	-49.8	10.2	25.5
2442.35	-53	7	22.3
2442.30	-54.8	5.2	20.5
2442.25	-57.4	2.6	17.9
2442.20	-57.4	2.6	17.9
2442.15	-55.6	4.4	19.7
2442.10	-56.4	3.6	18.9
2442.05	-59	1	16.3
2442.00	-59.6	0.4	15.7
2441.95	-60.4	-0.4	14.9
2441.90	-60.2	-0.2	15.1
2441.85	-59.2	0.8	16.1
2441.80	-61.4	-1.4	13.9
2441.75	-63.2	-3.2	12.1
2441.70	-62.4	-2.4	12.9
2441.65	-62.2	-2.2	13.1
2441.60	-62.4	-2.4	12.9
2441.55	-61	-1	14.3
2441.50	-61.2	-1.2	14.1
2441.45	-61.2	-1.2	14.1
2441.40	-58.8	1.2	16.5
2441.35	-60.6	-0.6	14.7
2441.30	-61	-1	14.3
2441.25	-61.4	-1.4	13.9
2441.20	-61.4	-1.4	13.9
2441.15	-58.8	1.2	16.5
2441.10	-59	1	16.3
2441.05	-61	-1	14.3
2441.00	-61	-1	14.3
2440.95	-61	-1	14.3
2440.90	-61	-1	14.3
2440.85	-59.6	0.4	15.7
2440.80	-61.8	-1.8	13.5
2440.75	-63	-3	12.3
2440.70	-62.8	-2.8	12.5
2440.65	-62.4	-2.4	12.9
2440.60	-62.2	-2.2	13.1
2440.55	-62	-2	13.3
2440.50	-62.2	-2.2	13.1
2440.45	-61.6	-1.6	13.7
2440.40	-59.1	0.9	16.2
2440.35	-60	0	15.3
2440.30	-62.4	-2.4	12.9
2440.25	-62.4	-2.4	12.9
2440.20	-62.4	-2.4	12.9
2440.15	-60.4	-0.4	14.9
2440.10	-59.8	0.2	15.5
2440.05	-61.2	-1.2	14.1
2440.00	-61.4	-1.4	13.9
2439.95	-61.4	-1.4	13.9
2439.90	-59.8	0.2	15.5
2439.85	-59.8	0.2	15.5
2439.80	-60.6	-0.6	14.7
2439.75	-63.2	-3.2	12.1
2439.70	-63.2	-3.2	12.1
2439.65	-62.8	-2.8	12.5
2439.60	-62.6	-2.6	12.7
2439.55	-62.8	-2.8	12.5
2439.50	-62.4	-2.4	12.9
2439.45	-60.6	-0.6	14.7
2439.40	-60	0	15.3

2439.35	-60	0	15.3
2439.30	-61.4	-1.4	13.9
2439.25	-62.4	-2.4	12.9
2439.20	-63	-3	12.3
2439.15	-60.2	-0.2	15.1
2439.10	-60	0	15.3
2439.05	-60.8	-0.8	14.5
2439.00	-61.5	-1.5	13.8
2438.95	-60.8	-0.8	14.5
2438.90	-60.4	-0.4	14.9
2438.85	-60.4	-0.4	14.9
2438.80	-60.8	-0.8	14.5
2438.75	-63.4	-3.4	11.9
2438.70	-62.2	-2.2	13.1
2438.65	-61.6	-1.6	13.7
2438.60	-61	-1	14.3
2438.55	-62.9	-2.9	12.4
2438.50	-61.2	-1.2	14.1
2438.45	-60.8	-0.8	14.5
2438.40	-60.2	-0.2	15.1
2438.35	-60	0	15.3
2438.30	-60.2	-0.2	15.1
2438.25	-60.4	-0.4	14.9
2438.20	-62.8	-2.8	12.5
2438.15	-60	0	15.3
2438.10	-60.2	-0.2	15.1
2438.05	-60.6	-0.6	14.7
2438.00	-61.4	-1.4	13.9
2437.95	-60.8	-0.8	14.5
2437.90	-60.6	-0.6	14.7
2437.85	-60.6	-0.6	14.7
2437.80	-61	-1	14.3
2437.75	-63.6	-3.6	11.7
2437.70	-61.6	-1.6	13.7
2437.65	-61.4	-1.4	13.9
2437.60	-61.4	-1.4	13.9
2437.55	-63.3	-3.3	12
2437.50	-61.2	-1.2	14.1
2437.45	-60.6	-0.6	14.7
2437.40	-59.8	0.2	15.5
2437.35	-59	1	16.3
2437.30	-58.4	1.6	16.9
2437.25	-57.4	2.6	17.9
2437.20	-58.8	1.2	16.5
2437.15	-54.4	5.6	20.9
2437.10	-52.9	7.1	22.4
2437.05	-51.8	8.2	23.5
2437.00	-51.6	8.4	23.7
2436.95	-50.8	9.2	24.5
2436.90	-52.2	7.8	23.1
2436.85	-53.2	6.8	22.1
2436.80	-54.8	5.2	20.5
2436.75	-58.8	1.2	16.5
2436.70	-57.8	2.2	17.5
2436.65	-58.5	1.5	16.8
2436.60	-59.4	0.6	15.9
2436.55	-62.4	-2.4	12.9
2436.50	-60.8	-0.8	14.5
2436.45	-60.8	-0.8	14.5
2436.40	-60.8	-0.8	14.5
2436.35	-61.2	-1.2	14.1
2436.30	-61.5	-1.5	13.8
2436.25	-61.8	-1.8	13.5

2436.20	-64.1	-4.1	11.2
2436.15	-61.3	-1.3	14
2436.10	-60.9	-0.9	14.4
2436.05	-61.2	-1.2	14.1
2436.00	-61.4	-1.4	13.9
2435.95	-60.5	-0.5	14.8
2435.90	-60	0	15.3
2435.85	-59.9	0.1	15.4
2435.80	-60.2	-0.2	15.1
2435.75	-62.8	-2.8	12.5
2435.70	-60.8	-0.8	14.5
2435.65	-60.8	-0.8	14.5
2435.60	-60.5	-0.5	14.8
2435.55	-62.9	-2.9	12.4
2435.50	-61.4	-1.4	13.9
2435.45	-60.9	-0.9	14.4
2435.40	-60.8	-0.8	14.5
2435.35	-60.8	-0.8	14.5
2435.30	-61.2	-1.2	14.1
2435.25	-61.6	-1.6	13.7
2435.20	-63.7	-3.7	11.6
2435.15	-60.8	-0.8	14.5
2435.10	-60.6	-0.6	14.7
2435.05	-61.2	-1.2	14.1
2435.00	-61.4	-1.4	13.9
2434.95	-60.3	-0.3	15
2434.90	-59.9	0.1	15.4
2434.85	-59.9	0.1	15.4
2434.80	-60.1	-0.1	15.2
2434.75	-59.8	0.2	15.5
2434.70	-62.4	-2.4	12.9
2434.65	-62.4	-2.4	12.9
2434.60	-62	-2	13.3
2434.55	-62.5	-2.5	12.8
2434.50	-61.9	-1.9	13.4
2434.45	-60.3	-0.3	15
2434.40	-60.2	-0.2	15.1
2434.35	-61	-1	14.3
2434.30	-61.3	-1.3	14
2434.25	-63	-3	12.3
2434.20	-63.4	-3.4	11.9
2434.15	-60.2	-0.2	15.1
2434.10	-60.1	-0.1	15.2
2434.05	-61.6	-1.6	13.7
2434.00	-61.7	-1.7	13.6
2433.95	-60.5	-0.5	14.8
2433.90	-59.6	0.4	15.7
2433.85	-59.4	0.6	15.9
2433.80	-61.3	-1.3	14
2433.75	-62.7	-2.7	12.6
2433.70	-62.7	-2.7	12.6
2433.65	-62.3	-2.3	13
2433.60	-61.9	-1.9	13.4
2433.55	-62	-2	13.3
2433.50	-61.6	-1.6	13.7
2433.45	-59.6	0.4	15.7
2433.40	-59.6	0.4	15.7
2433.35	-61.6	-1.6	13.7
2433.30	-61.6	-1.6	13.7
2433.25	-63	-3	12.3
2433.20	-62.4	-2.4	12.9
2433.15	-59.4	0.6	15.9
2433.10	-59.4	0.6	15.9

2433.05	-61.5	-1.5	13.8
2433.00	-61.3	-1.3	14
2432.95	-61.1	-1.1	14.2
2432.90	-60.5	-0.5	14.8
2432.85	-60.5	-0.5	14.8
2432.80	-60.8	-0.8	14.5
2432.75	-61.6	-1.6	13.7
2432.70	-61.6	-1.6	13.7
2432.65	-61.5	-1.5	13.8
2432.60	-61	-1	14.3
2432.55	-60.8	-0.8	14.5
2432.50	-61	-1	14.3
2432.45	-60.4	-0.4	14.9
2432.40	-60.4	-0.4	14.9
2432.35	-61.6	-1.6	13.7
2432.30	-62	-2	13.3
2432.25	-63	-3	12.3
2432.20	-62	-2	13.3
2432.15	-61.2	-1.2	14.1
2432.10	-61	-1	14.3
2432.05	-61	-1	14.3
2432.00	-60.8	-0.8	14.5
2431.95	-60.4	-0.4	14.9
2431.90	-59	1	16.3
2431.85	-58.6	1.4	16.7
2431.80	-58.2	1.8	17.1
2431.75	-58.4	1.6	16.9
2431.70	-57.4	2.6	17.9
2431.65	-56.6	3.4	18.7
2431.60	-53.8	6.2	21.5
2431.55	-51	9	24.3
2431.50	-50.4	9.6	24.9
2431.45	-50	10	25.3
2431.40	-50.4	9.6	24.9
2431.35	-52.9	7.1	22.4
2431.30	-54.1	5.9	21.2
2431.25	-56.4	3.6	18.9
2431.20	-56.4	3.6	18.9
2431.15	-56	4	19.3
2431.10	-56.3	3.7	19
2431.05	-58.2	1.8	17.1
2431.00	-58.2	1.8	17.1
2430.95	-58.8	1.2	16.5
2430.90	-58.4	1.6	16.9
2430.85	-58.8	1.2	16.5
2430.80	-59.2	0.8	16.1
2430.75	-60.8	-0.8	14.5
2430.70	-60.6	-0.6	14.7
2430.65	-60.2	-0.2	15.1
2430.60	-58.8	1.2	16.5
2430.55	-57.8	2.2	17.5
2430.50	-57.8	2.2	17.5
2430.45	-56.8	3.2	18.5
2430.40	-56.6	3.4	18.7
2430.35	-56.8	3.2	18.5
2430.30	-57.2	2.8	18.1
2430.25	-58	2	17.3
2430.20	-56.2	3.8	19.1
2430.15	-55.4	4.6	19.9
2430.10	-55.4	4.6	19.9
2430.05	-56.6	3.4	18.7
2430.00	-55.8	4.2	19.5
2429.95	-56	4	19.3

2429.90	-55.4	4.6	19.9
2429.85	-55.4	4.6	19.9
2429.80	-57	3	18.3
2429.75	-56.2	3.8	19.1
2429.70	-56.7	3.3	18.6
2429.65	-55.7	4.3	19.6
2429.60	-56	4	19.3
2429.55	-56.2	3.8	19.1
2429.50	-56.2	3.8	19.1
2429.45	-55.6	4.4	19.7
2429.40	-55	5	20.3
2429.35	-54.2	5.8	21.1
2429.30	-54	6	21.3
2429.25	-53.6	6.4	21.7
2429.20	-53.8	6.2	21.5
2429.15	-53.8	6.2	21.5
2429.10	-53.8	6.2	21.5
2429.05	-53.8	6.2	21.5
2429.00	-53.9	6.1	21.4



Channel 6 Data Rate 2Mb/s sorted results

Frequency	PG
2436.20	11.2
2435.20	11.6
2437.75	11.7
2438.75	11.9
2434.20	11.9
2437.55	12
2441.75	12.1
2439.75	12.1
2439.70	12.1
2440.75	12.3
2439.20	12.3
2434.25	12.3
2433.25	12.3
2432.25	12.3
2438.55	12.4
2435.55	12.4
2440.70	12.5
2439.65	12.5
2439.55	12.5
2438.20	12.5
2435.75	12.5
2433.75	12.6
2433.70	12.6
2439.60	12.7
2434.55	12.8
2441.70	12.9
2441.60	12.9
2440.65	12.9
2440.30	12.9
2440.25	12.9
2440.20	12.9
2439.50	12.9
2439.25	12.9
2436.55	12.9
2434.70	12.9
2434.65	12.9
2433.20	12.9
2433.65	13
2441.65	13.1
2440.60	13.1
2440.50	13.1
2438.70	13.1
2440.55	13.3
2434.60	13.3
2433.55	13.3
2432.30	13.3
2432.20	13.3
2434.50	13.4
2433.60	13.4
2440.80	13.5
2436.25	13.5

2434.00	13.6
2440.45	13.7
2438.65	13.7
2437.70	13.7
2435.25	13.7
2434.05	13.7
2433.50	13.7
2433.35	13.7
2433.30	13.7
2432.75	13.7
2432.70	13.7
2432.35	13.7
2439.00	13.8
2436.30	13.8

2433.05 13.8 Processing Gain 2MB/s

2432.65	13.8
2441.80	13.9
2441.25	13.9
2441.20	13.9
2440.00	13.9
2439.95	13.9
2439.30	13.9
2438.00	13.9
2437.65	13.9
2437.60	13.9
2436.00	13.9
2435.50	13.9
2435.00	13.9
2436.15	14
2434.30	14
2433.80	14
2433.00	14
2441.50	14.1
2441.45	14.1
2440.05	14.1
2438.50	14.1
2437.50	14.1
2436.35	14.1
2436.05	14.1
2435.30	14.1
2435.05	14.1
2432.15	14.1
2432.95	14.2
2441.55	14.3
2441.30	14.3
2441.05	14.3
2441.00	14.3
2440.95	14.3
2440.90	14.3
2438.60	14.3
2437.80	14.3
2434.35	14.3
2432.60	14.3
2432.50	14.3

2432.10	14.3
2432.05	14.3
2436.10	14.4
2435.45	14.4
2439.05	14.5
2438.95	14.5
2438.80	14.5
2438.45	14.5
2437.95	14.5
2436.50	14.5
2436.45	14.5
2436.40	14.5
2435.70	14.5
2435.65	14.5
2435.40	14.5
2435.35	14.5
2435.15	14.5
2432.80	14.5
2432.55	14.5
2432.00	14.5
2430.75	14.5
2441.35	14.7
2439.80	14.7
2439.45	14.7
2438.05	14.7
2437.90	14.7
2437.85	14.7
2437.45	14.7
2435.10	14.7
2430.70	14.7
2435.95	14.8
2435.60	14.8
2433.95	14.8
2432.90	14.8
2432.85	14.8
2441.95	14.9
2440.15	14.9
2438.90	14.9
2438.85	14.9
2438.25	14.9
2432.45	14.9
2432.40	14.9
2431.95	14.9
2434.95	15
2434.45	15
2443.25	15.1
2441.90	15.1
2439.15	15.1
2438.40	15.1
2438.30	15.1
2438.10	15.1
2435.80	15.1
2434.40	15.1
2434.15	15.1
2430.65	15.1

2434.80	15.2
2434.10	15.2
2440.35	15.3
2439.40	15.3
2439.35	15.3
2439.10	15.3
2438.35	15.3
2438.15	15.3
2435.90	15.3
2435.85	15.4
2434.90	15.4
2434.85	15.4
2440.10	15.5
2439.90	15.5
2439.85	15.5
2437.40	15.5
2434.75	15.5
2442.00	15.7
2440.85	15.7
2433.90	15.7
2433.45	15.7
2433.40	15.7
2436.60	15.9
2433.85	15.9
2433.15	15.9
2433.10	15.9
2443.20	16.1
2441.85	16.1
2430.80	16.1
2440.40	16.2
2442.05	16.3
2441.10	16.3
2437.35	16.3
2431.90	16.3
2443.30	16.4
2441.40	16.5
2441.15	16.5
2437.20	16.5
2436.75	16.5
2430.95	16.5
2430.85	16.5
2430.60	16.5
2443.05	16.7
2431.85	16.7
2436.65	16.8
2443.35	16.9
2437.30	16.9
2431.75	16.9
2430.90	16.9
2443.00	17.1
2442.95	17.1
2431.80	17.1
2431.05	17.1
2431.00	17.1
2443.15	17.3

2443.10	17.3
2430.25	17.3
2443.65	17.5
2436.70	17.5
2430.55	17.5
2430.50	17.5
2443.40	17.8
2443.60	17.9
2443.50	17.9
2443.45	17.9
2442.25	17.9
2442.20	17.9
2437.25	17.9
2431.70	17.9
2430.30	18.1
2443.75	18.2
2443.70	18.2
2429.80	18.3
2442.90	18.5
2442.75	18.5
2430.45	18.5
2430.35	18.5
2429.70	18.6
2431.65	18.7
2430.40	18.7
2430.05	18.7
2442.70	18.9
2442.10	18.9
2431.25	18.9
2431.20	18.9
2431.10	19
2443.55	19.1
2442.80	19.1
2430.20	19.1
2429.75	19.1
2429.55	19.1
2429.50	19.1
2444.25	19.2
2442.85	19.3
2431.15	19.3
2429.95	19.3
2429.60	19.3
2443.80	19.5
2430.00	19.5
2429.65	19.6
2442.15	19.7
2429.45	19.7
2430.15	19.9
2430.10	19.9
2429.90	19.9
2429.85	19.9
2444.45	20.1
2442.65	20.1
2444.00	20.2
2444.50	20.3

2444.05	20.3
2443.95	20.3
2429.40	20.3
2444.40	20.4
2443.90	20.4
2443.85	20.4
2444.30	20.5
2442.30	20.5
2436.80	20.5
2444.20	20.6
2444.55	20.7
2444.35	20.7
2437.15	20.9
2444.15	21.1
2444.10	21.1
2429.35	21.1
2431.30	21.2
2429.30	21.3
0.00	21.4
2429.00	21.4
2431.60	21.5
2429.20	21.5
2429.15	21.5
2429.10	21.5
2429.05	21.5
2429.25	21.7
2444.65	22
2442.60	22.1
2436.85	22.1
2445.00	22.3
2444.95	22.3
2442.35	22.3
2444.90	22.4
2437.10	22.4
2431.35	22.4
2444.75	22.5
2444.70	22.5
2444.85	22.6
2444.80	22.6
2436.90	23.1
2437.05	23.5
2437.00	23.7
2431.55	24.3
2436.95	24.5
2431.50	24.9
2431.40	24.9
2431.45	25.3
2442.55	25.5
2442.40	25.5
2442.50	25.7
2442.45	25.9

Data Rate 1Mb/s

Modulation DBPSK
System Loss Lsys=2
PG=Es/No+Lsys+J/S
Desired Signal level = -60dBm
Channel #6

Frequency	Jammer Level	J/S	PG
2445.00	-53.5	6.5	18.8
2444.95	-53.5	6.5	18.8
2444.90	-53.4	6.6	18.9
2444.85	-53.3	6.7	19
2444.80	-52.9	7.1	19.4
2444.75	-52.8	7.2	19.5
2444.70	-52.9	7.1	19.4
2444.65	-53.5	6.5	18.8
2444.60	-54.3	5.7	18
2444.55	-54.9	5.1	17.4
2444.50	-55.3	4.7	17
2444.45	-55.5	4.5	16.8
2444.40	-55.1	4.9	17.2
2444.35	-54.6	5.4	17.7
2444.30	-54.3	5.7	18
2444.25	-54.1	5.9	18.2
2444.20	-54.1	5.9	18.2
2444.15	-54.1	5.9	18.2
2444.10	-54.4	5.6	17.9
2444.05	-54.5	5.5	17.8
2444.00	-54.6	5.4	17.7
2443.95	-54.7	5.3	17.6
2443.90	-54.5	5.5	17.8
2443.85	-54.3	5.7	18
2443.80	-54.1	5.9	18.2
2443.75	-54.3	5.7	18
2443.70	-54.5	5.5	17.8
2443.65	-54.9	5.1	17.4
2443.60	-55.5	4.5	16.8
2443.55	-56.3	3.7	16
2443.50	-56.9	3.1	15.4
2443.45	-57.1	2.9	15.2
2443.40	-56.9	3.1	15.4
2443.35	-56.7	3.3	15.6
2443.30	-56.4	3.6	15.9
2443.25	-56.5	3.5	15.8
2443.20	-57.1	2.9	15.2
2443.15	-56	4	16.3
2443.10	-56	4	16.3
2443.05	-56.3	3.7	16
2443.00	-56	4	16.3
2442.95	-55.7	4.3	16.6
2442.90	-55.1	4.9	17.2
2442.85	-54.3	5.7	18
2442.80	-53.7	6.3	18.6
2442.75	-52.5	7.5	19.8
2442.70	-51.5	8.5	20.8
2442.65	-50.1	9.9	22.2
2442.60	-48.5	11.5	23.8
2442.55	-47.7	12.3	24.6

Processing Gain = 13.9

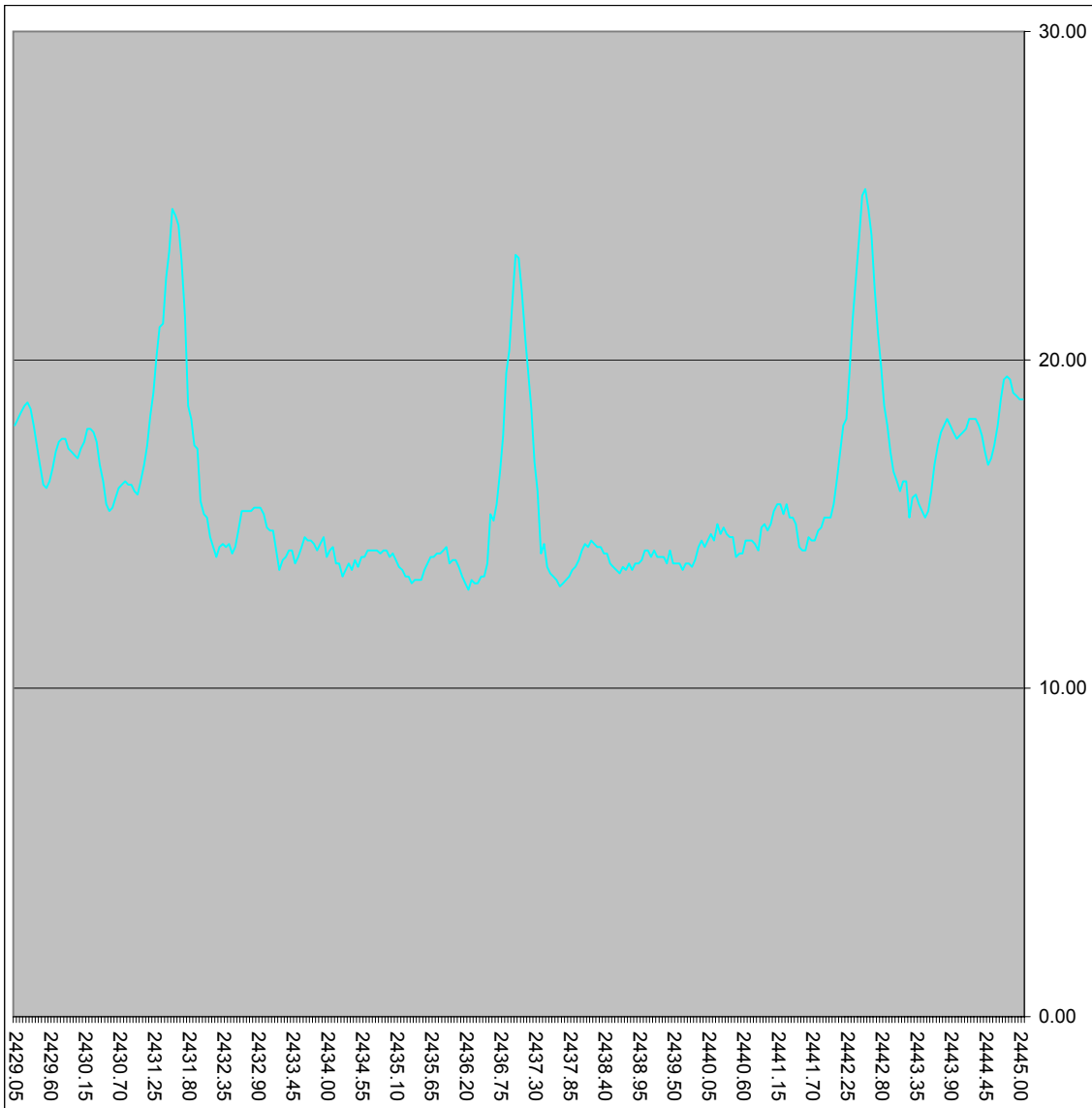
2442.50	-47.1	12.9	25.2
2442.45	-47.3	12.7	25
2442.40	-48.6	11.4	23.7
2442.35	-49.9	10.1	22.4
2442.30	-51.1	8.9	21.2
2442.25	-52.7	7.3	19.6
2442.20	-54.1	5.9	18.2
2442.15	-54.3	5.7	18
2442.10	-55.1	4.9	17.2
2442.05	-55.9	4.1	16.4
2442.00	-56.7	3.3	15.6
2441.95	-57.1	2.9	15.2
2441.90	-57.1	2.9	15.2
2441.85	-57.1	2.9	15.2
2441.80	-57.4	2.6	14.9
2441.75	-57.5	2.5	14.8
2441.70	-57.8	2.2	14.5
2441.65	-57.8	2.2	14.5
2441.60	-57.7	2.3	14.6
2441.55	-58.1	1.9	14.2
2441.50	-58.1	1.9	14.2
2441.45	-58	2	14.3
2441.40	-57.3	2.7	15
2441.35	-57.1	2.9	15.2
2441.30	-57.1	2.9	15.2
2441.25	-56.7	3.3	15.6
2441.20	-57	3	15.3
2441.15	-56.7	3.3	15.6
2441.10	-56.7	3.3	15.6
2441.05	-56.9	3.1	15.4
2441.00	-57.3	2.7	15
2440.95	-57.5	2.5	14.8
2440.90	-57.3	2.7	15
2440.85	-57.4	2.6	14.9
2440.80	-58.1	1.9	14.2
2440.75	-57.9	2.1	14.4
2440.70	-57.8	2.2	14.5
2440.65	-57.8	2.2	14.5
2440.60	-57.8	2.2	14.5
2440.55	-58.2	1.8	14.1
2440.50	-58.2	1.8	14.1
2440.45	-58.3	1.7	14
2440.40	-57.7	2.3	14.6
2440.35	-57.7	2.3	14.6
2440.30	-57.6	2.4	14.7
2440.25	-57.4	2.6	14.9
2440.20	-57.6	2.4	14.7
2440.15	-57.3	2.7	15
2440.10	-57.8	2.2	14.5
2440.05	-57.6	2.4	14.7
2440.00	-57.8	2.2	14.5
2439.95	-58	2	14.3
2439.90	-57.8	2.2	14.5
2439.85	-58	2	14.3
2439.80	-58.4	1.6	13.9
2439.75	-58.6	1.4	13.7
2439.70	-58.5	1.5	13.8
2439.65	-58.5	1.5	13.8
2439.60	-58.7	1.3	13.6
2439.55	-58.5	1.5	13.8
2439.50	-58.5	1.5	13.8
2439.45	-58.5	1.5	13.8
2439.40	-58.1	1.9	14.2

2439.35	-58.5	1.5	13.8
2439.30	-58.3	1.7	14
2439.25	-58.3	1.7	14
2439.20	-58.3	1.7	14
2439.15	-58.1	1.9	14.2
2439.10	-58.3	1.7	14
2439.05	-58.1	1.9	14.2
2439.00	-58.1	1.9	14.2
2438.95	-58.4	1.6	13.9
2438.90	-58.5	1.5	13.8
2438.85	-58.5	1.5	13.8
2438.80	-58.7	1.3	13.6
2438.75	-58.5	1.5	13.8
2438.70	-58.7	1.3	13.6
2438.65	-58.6	1.4	13.7
2438.60	-58.8	1.2	13.5
2438.55	-58.7	1.3	13.6
2438.50	-58.6	1.4	13.7
2438.45	-58.5	1.5	13.8
2438.40	-58.2	1.8	14.1
2438.35	-58.2	1.8	14.1
2438.30	-58	2	14.3
2438.25	-58	2	14.3
2438.20	-57.9	2.1	14.4
2438.15	-57.8	2.2	14.5
2438.10	-58	2	14.3
2438.05	-57.9	2.1	14.4
2438.00	-58.1	1.9	14.2
2437.95	-58.4	1.6	13.9
2437.90	-58.6	1.4	13.7
2437.85	-58.7	1.3	13.6
2437.80	-58.9	1.1	13.4
2437.75	-59	1	13.3
2437.70	-59.1	0.9	13.2
2437.65	-59.2	0.8	13.1
2437.60	-59	1	13.3
2437.55	-58.9	1.1	13.4
2437.50	-58.8	1.2	13.5
2437.45	-58.6	1.4	13.7
2437.40	-57.9	2.1	14.4
2437.35	-58.2	1.8	14.1
2437.30	-56.3	3.7	16
2437.25	-55.4	4.6	16.9
2437.20	-53.8	6.2	18.5
2437.15	-52.7	7.3	19.6
2437.10	-51.6	8.4	20.7
2437.05	-50.3	9.7	22
2437.00	-49.2	10.8	23.1
2436.95	-49.1	10.9	23.2
2436.90	-50.5	9.5	21.8
2436.85	-52	8	20.3
2436.80	-52.7	7.3	19.6
2436.75	-54.6	5.4	17.7
2436.70	-55.7	4.3	16.6
2436.65	-56.7	3.3	15.6
2436.60	-57.2	2.8	15.1
2436.55	-57	3	15.3
2436.50	-58.5	1.5	13.8
2436.45	-58.9	1.1	13.4
2436.40	-58.9	1.1	13.4
2436.35	-59.1	0.9	13.2
2436.30	-59.1	0.9	13.2
2436.25	-59	1	13.3

2436.20	-59.3	0.7	13
2436.15	-59.1	0.9	13.2
2436.10	-58.9	1.1	13.4
2436.05	-58.6	1.4	13.7
2436.00	-58.4	1.6	13.9
2435.95	-58.4	1.6	13.9
2435.90	-58.5	1.5	13.8
2435.85	-58	2	14.3
2435.80	-58.1	1.9	14.2
2435.75	-58.2	1.8	14.1
2435.70	-58.2	1.8	14.1
2435.65	-58.3	1.7	14
2435.60	-58.3	1.7	14
2435.55	-58.5	1.5	13.8
2435.50	-58.7	1.3	13.6
2435.45	-59	1	13.3
2435.40	-59	1	13.3
2435.35	-59	1	13.3
2435.30	-59.1	0.9	13.2
2435.25	-58.9	1.1	13.4
2435.20	-58.9	1.1	13.4
2435.15	-58.7	1.3	13.6
2435.10	-58.6	1.4	13.7
2435.05	-58.4	1.6	13.9
2435.00	-58.2	1.8	14.1
2434.95	-58.3	1.7	14
2434.90	-58.1	1.9	14.2
2434.85	-58.1	1.9	14.2
2434.80	-58.2	1.8	14.1
2434.75	-58.1	1.9	14.2
2434.70	-58.1	1.9	14.2
2434.65	-58.1	1.9	14.2
2434.60	-58.1	1.9	14.2
2434.55	-58.3	1.7	14
2434.50	-58.3	1.7	14
2434.45	-58.6	1.4	13.7
2434.40	-58.4	1.6	13.9
2434.35	-58.7	1.3	13.6
2434.30	-58.5	1.5	13.8
2434.25	-58.7	1.3	13.6
2434.20	-58.9	1.1	13.4
2434.15	-58.5	1.5	13.8
2434.10	-58.5	1.5	13.8
2434.05	-58	2	14.3
2434.00	-58.1	1.9	14.2
2433.95	-58.3	1.7	14
2433.90	-57.7	2.3	14.6
2433.85	-57.9	2.1	14.4
2433.80	-58.1	1.9	14.2
2433.75	-57.9	2.1	14.4
2433.70	-57.8	2.2	14.5
2433.65	-57.8	2.2	14.5
2433.60	-57.7	2.3	14.6
2433.55	-58	2	14.3
2433.50	-58.3	1.7	14
2433.45	-58.5	1.5	13.8
2433.40	-58.1	1.9	14.2
2433.35	-58.1	1.9	14.2
2433.30	-58.3	1.7	14
2433.25	-58.4	1.6	13.9
2433.20	-58.7	1.3	13.6
2433.15	-58.1	1.9	14.2
2433.10	-57.5	2.5	14.8

2433.05	-57.5	2.5	14.8
2433.00	-57.4	2.6	14.9
2432.95	-57	3	15.3
2432.90	-56.8	3.2	15.5
2432.85	-56.8	3.2	15.5
2432.80	-56.8	3.2	15.5
2432.75	-56.9	3.1	15.4
2432.70	-56.9	3.1	15.4
2432.65	-56.9	3.1	15.4
2432.60	-56.9	3.1	15.4
2432.55	-57.5	2.5	14.8
2432.50	-58	2	14.3
2432.45	-58.2	1.8	14.1
2432.40	-57.9	2.1	14.4
2432.35	-58	2	14.3
2432.30	-57.9	2.1	14.4
2432.25	-58	2	14.3
2432.20	-58.3	1.7	14
2432.15	-58	2	14.3
2432.10	-57.7	2.3	14.6
2432.05	-57.1	2.9	15.2
2432.00	-57	3	15.3
2431.95	-56.6	3.4	15.7
2431.90	-55	5	17.3
2431.85	-54.9	5.1	17.4
2431.80	-54.1	5.9	18.2
2431.75	-53.7	6.3	18.6
2431.70	-51	9	21.3
2431.65	-49.3	10.7	23
2431.60	-48.2	11.8	24.1
2431.55	-47.9	12.1	24.4
2431.50	-47.7	12.3	24.6
2431.45	-49	11	23.3
2431.40	-49.8	10.2	22.5
2431.35	-51.2	8.8	21.1
2431.30	-51.3	8.7	21
2431.25	-52.2	7.8	20.1
2431.20	-53.3	6.7	19
2431.15	-54	6	18.3
2431.10	-54.9	5.1	17.4
2431.05	-55.5	4.5	16.8
2431.00	-56	4	16.3
2430.95	-56.4	3.6	15.9
2430.90	-56.3	3.7	16
2430.85	-56.1	3.9	16.2
2430.80	-56.1	3.9	16.2
2430.75	-56	4	16.3
2430.70	-56.1	3.9	16.2
2430.65	-56.2	3.8	16.1
2430.60	-56.5	3.5	15.8
2430.55	-56.8	3.2	15.5
2430.50	-56.9	3.1	15.4
2430.45	-56.7	3.3	15.6
2430.40	-56	4	16.3
2430.35	-55.5	4.5	16.8
2430.30	-54.8	5.2	17.5
2430.25	-54.5	5.5	17.8
2430.20	-54.4	5.6	17.9
2430.15	-54.4	5.6	17.9
2430.10	-54.8	5.2	17.5
2430.05	-55	5	17.3
2430.00	-55.3	4.7	17
2429.95	-55.2	4.8	17.1

2429.90	-55.1	4.9	17.2
2429.85	-55	5	17.3
2429.80	-54.7	5.3	17.6
2429.75	-54.7	5.3	17.6
2429.70	-54.8	5.2	17.5
2429.65	-55.1	4.9	17.2
2429.60	-55.6	4.4	16.7
2429.55	-56	4	16.3
2429.50	-56.2	3.8	16.1
2429.45	-56.1	3.9	16.2
2429.40	-55.5	4.5	16.8
2429.35	-54.9	5.1	17.4
2429.30	-54.3	5.7	18
2429.25	-53.8	6.2	18.5
2429.20	-53.6	6.4	18.7
2429.15	-53.7	6.3	18.6
2429.10	-53.9	6.1	18.4
2429.05	-54.1	5.9	18.2
2429.00	-54.3	5.7	18



Channel 6 Data Rate 1Mb/s sorted results

Frequency PG

2436.20	13
2437.65	13.1
2437.70	13.2
2436.35	13.2
2436.30	13.2
2436.15	13.2
2435.30	13.2
2437.75	13.3
2437.60	13.3
2436.25	13.3
2435.45	13.3
2435.40	13.3
2435.35	13.3
2437.80	13.4
2437.55	13.4
2436.45	13.4
2436.40	13.4
2436.10	13.4
2435.25	13.4
2435.20	13.4
2434.20	13.4
2438.60	13.5
2437.50	13.5
2439.60	13.6
2438.80	13.6
2438.70	13.6
2438.55	13.6
2437.85	13.6
2435.50	13.6
2435.15	13.6
2434.35	13.6
2434.25	13.6
2433.20	13.6
2439.75	13.7
2438.65	13.7
2438.50	13.7
2437.90	13.7
2437.45	13.7
2436.05	13.7
2435.10	13.7
2434.45	13.7
2439.70	13.8
2439.65	13.8
2439.55	13.8
2439.50	13.8
2439.45	13.8
2439.35	13.8
2438.90	13.8
2438.85	13.8
2438.75	13.8
2438.45	13.8
2436.50	13.8

2435.90	13.8
2435.55	13.8
2434.30	13.8
2434.15	13.8
2434.10	13.8
2433.45	13.8
2439.80	13.9
2438.95	13.9
2437.95	13.9
2436.00	13.9
2435.95	13.9
2435.05	13.9
2434.40	13.9

2433.25

Processing Gain 1MB/s

2440.45	14
2439.30	14
2439.25	14
2439.20	14
2439.10	14
2435.65	14
2435.60	14
2434.95	14
2434.55	14
2434.50	14
2433.95	14
2433.50	14
2433.30	14
2432.20	14
2440.55	14.1
2440.50	14.1
2438.40	14.1
2438.35	14.1
2437.35	14.1
2435.75	14.1
2435.70	14.1
2435.00	14.1
2434.80	14.1
2432.45	14.1
2441.55	14.2
2441.50	14.2
2440.80	14.2
2439.40	14.2
2439.15	14.2
2439.05	14.2
2439.00	14.2
2438.00	14.2
2435.80	14.2
2434.90	14.2
2434.85	14.2
2434.75	14.2
2434.70	14.2
2434.65	14.2
2434.60	14.2
2434.00	14.2
2433.80	14.2

2433.40	14.2
2433.35	14.2
2433.15	14.2
2441.45	14.3
2439.95	14.3
2439.85	14.3
2438.30	14.3
2438.25	14.3
2438.10	14.3
2435.85	14.3
2434.05	14.3
2433.55	14.3
2432.50	14.3
2432.35	14.3
2432.25	14.3
2432.15	14.3
2440.75	14.4
2438.20	14.4
2438.05	14.4
2437.40	14.4
2433.85	14.4
2433.75	14.4
2432.40	14.4
2432.30	14.4
2441.70	14.5
2441.65	14.5
2440.70	14.5
2440.65	14.5
2440.60	14.5
2440.10	14.5
2440.00	14.5
2439.90	14.5
2438.15	14.5
2433.70	14.5
2433.65	14.5
2441.60	14.6
2440.40	14.6
2440.35	14.6
2433.90	14.6
2433.60	14.6
2432.10	14.6
2440.30	14.7
2440.20	14.7
2440.05	14.7
2441.75	14.8
2440.95	14.8
2433.10	14.8
2433.05	14.8
2432.55	14.8
2441.80	14.9
2440.85	14.9
2440.25	14.9
2433.00	14.9
2441.40	15
2441.00	15

2440.90	15
2440.15	15
2436.60	15.1
2443.45	15.2
2443.20	15.2
2441.95	15.2
2441.90	15.2
2441.85	15.2
2441.35	15.2
2441.30	15.2
2432.05	15.2
2441.20	15.3
2436.55	15.3
2432.95	15.3
2432.00	15.3
2443.50	15.4
2443.40	15.4
2441.05	15.4
2432.75	15.4
2432.70	15.4
2432.65	15.4
2432.60	15.4
2430.50	15.4
2432.90	15.5
2432.85	15.5
2432.80	15.5
2430.55	15.5
2443.35	15.6
2442.00	15.6
2441.25	15.6
2441.15	15.6
2441.10	15.6
2436.65	15.6
2430.45	15.6
2431.95	15.7
2443.25	15.8
2430.60	15.8
2443.30	15.9
2430.95	15.9
2443.55	16
2443.05	16
2437.30	16
2430.90	16
2430.65	16.1
2429.50	16.1
2430.85	16.2
2430.80	16.2
2430.70	16.2
2429.45	16.2
2443.15	16.3
2443.10	16.3
2443.00	16.3
2431.00	16.3
2430.75	16.3
2430.40	16.3

2429.55	16.3
2442.05	16.4
2442.95	16.6
2436.70	16.6
2429.60	16.7
2444.45	16.8
2443.60	16.8
2431.05	16.8
2430.35	16.8
2429.40	16.8
2437.25	16.9
2444.50	17
2430.00	17
2429.95	17.1
2444.40	17.2
2442.90	17.2
2442.10	17.2
2429.90	17.2
2429.65	17.2
2431.90	17.3
2430.05	17.3
2429.85	17.3
2444.55	17.4
2443.65	17.4
2431.85	17.4
2431.10	17.4
2429.35	17.4
2430.30	17.5
2430.10	17.5
2429.70	17.5
2443.95	17.6
2429.80	17.6
2429.75	17.6
2444.35	17.7
2444.00	17.7
2436.75	17.7
2444.05	17.8
2443.90	17.8
2443.70	17.8
2430.25	17.8
2444.10	17.9
2430.20	17.9
2430.15	17.9
2444.60	18
2444.30	18
2443.85	18
2443.75	18
2442.85	18
2442.15	18
2429.30	18
2429.00	18
2444.25	18.2
2444.20	18.2
2444.15	18.2
2443.80	18.2

2442.20	18.2
2431.80	18.2
2429.05	18.2
2431.15	18.3
2429.10	18.4
2437.20	18.5
2429.25	18.5
2442.80	18.6
2431.75	18.6
2429.15	18.6
2429.20	18.7
2445.00	18.8
2444.95	18.8
2444.65	18.8
2444.90	18.90
2444.85	19
2431.20	19
2444.80	19.4
2444.70	19.4
2444.75	19.5
2442.25	19.6
2437.15	19.6
2436.80	19.6
2442.75	19.8
2431.25	20.1
2436.85	20.3
2437.10	20.7
2442.70	20.8
2431.30	21
2431.35	21.1
2442.30	21.2
2431.70	21.3
2436.90	21.8
2437.05	22
2442.65	22.2
2442.35	22.4
2431.40	22.5
2431.65	23
2437.00	23.1
2436.95	23.2
2431.45	23.3
2442.40	23.7
2442.60	23.8
2431.60	24.1
2431.55	24.4
2442.55	24.6
2431.50	24.6
2442.45	25
2442.50	25.2