

## **ATTACHMENT L – SAR TEST DATA**

---

# SYMBOL FCC ID:H9PLA4137SPS3046 -- 2.4GHz Body SAR

Generic Twin Phantom; Flat Section; Probe: ET3DV6 - SN1560 -- Probe Cal Date 20/02/01

Med. Parameters 2450 MHz Muscle:  $\sigma = 2.20$  mho/m  $\epsilon_r = 52.0$   $\rho = 1.00$  g/cm<sup>3</sup>; Antenna Position -- Out; Crest Factor 1.0

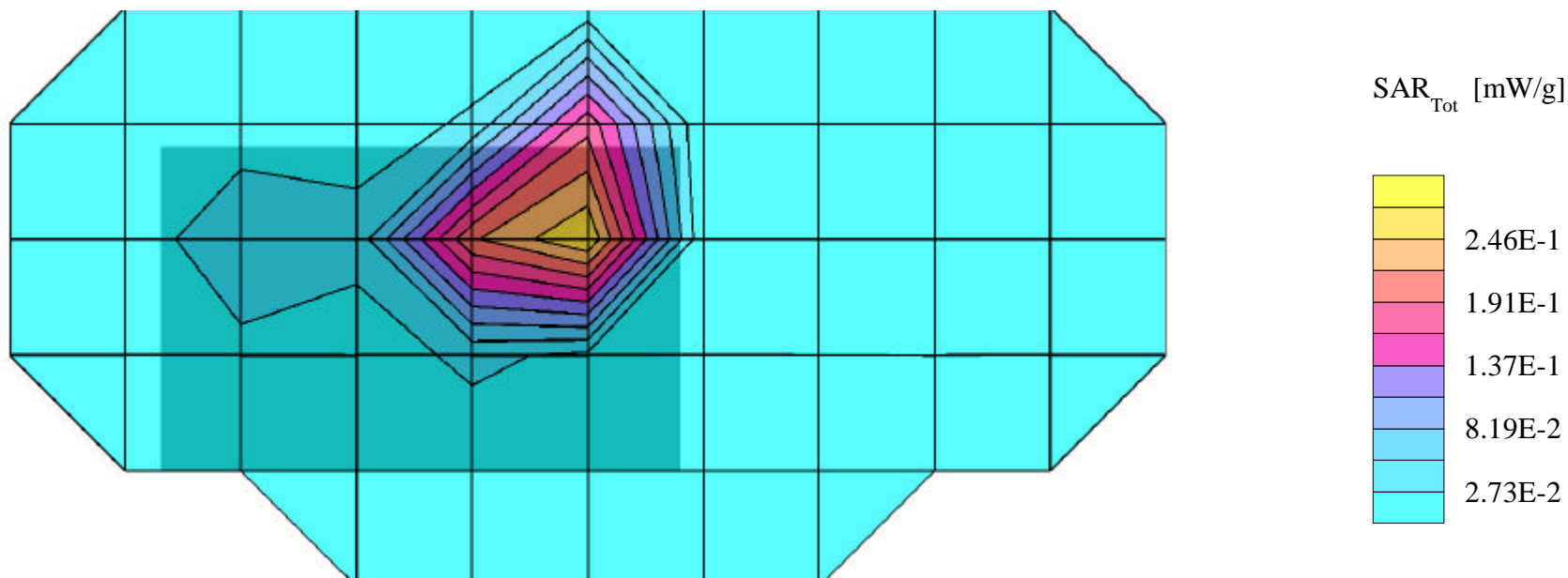
**SAR (1g): 0.599 mW/g**, SAR (10g): 0.310 mW/g

SYMBOL DSSS Scan/LAN Sled w/Integrated 11MB WLAN card (FCC ID:H9PLA4137P)

Model: SPS3046; CW (Continuous Transmit) Mode, Low Channel [2412MHz]; No Beltclip, No Holster

EIRP Power = 21.5dBm; Spacing = Back panel of EUT (internal antenna side) touching flat phantom

Test Date -- 09/17/2001



# SYMBOL FCC ID:H9PLA4137SPS3046 -- 2.4GHz Body SAR

Generic Twin Phantom; Flat Section; Probe: ET3DV6 - SN1560 -- Probe Cal Date 20/02/01

Med. Parameters 2450 MHz Muscle:  $\sigma = 2.20$  mho/m  $\epsilon_r = 52.0$   $\rho = 1.00$  g/cm<sup>3</sup>; Antenna Position -- Out; Crest Factor 1.0

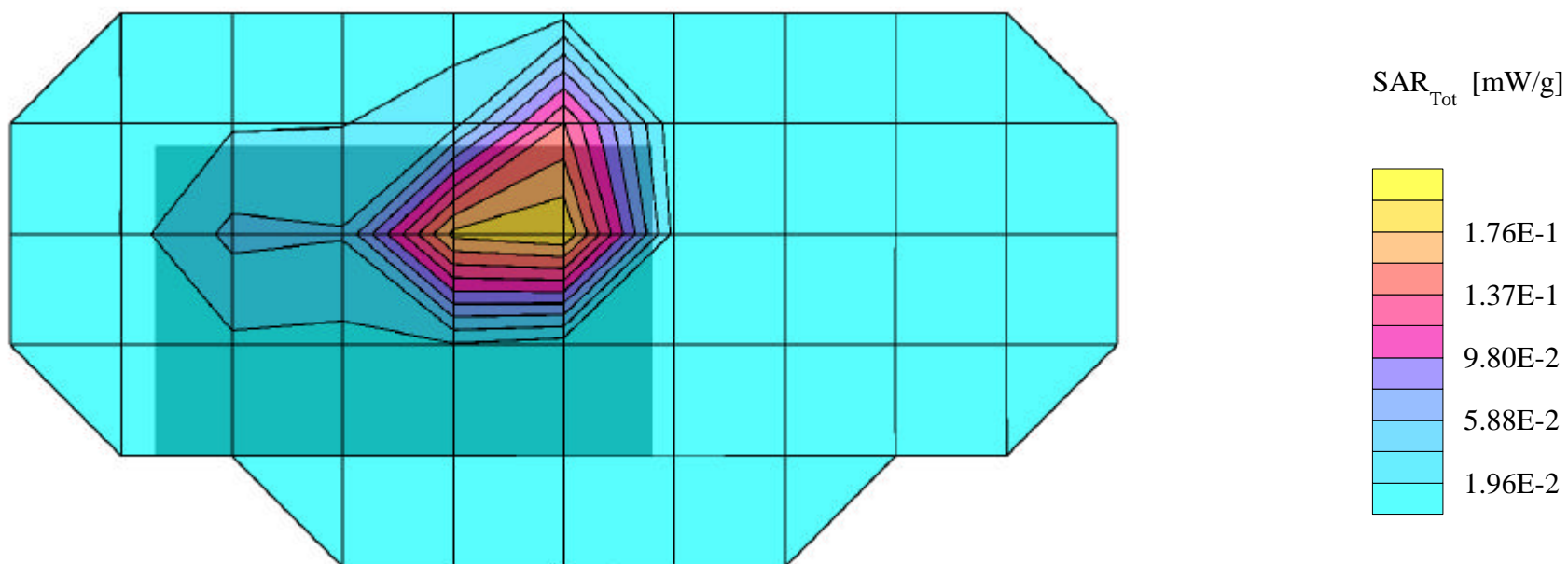
**SAR (1g): 0.449 mW/g**, SAR (10g): 0.234 mW/g

SYMBOL DSSS Scan/LAN Sled w/Integrated 11MB WLAN card (FCC ID:H9PLA4137P)

Model: SPS3046; CW (Continuous Transmit) Mode, Mid Channel [2437MHz]; No Beltclip, No Holster

EIRP Power = 21.5dBm; Spacing = Back panel of EUT (internal antenna side) touching flat phantom

Test Date -- 09/17/2001



# SYMBOL FCC ID:H9PLA4137SPS3046 -- 2.4GHz Body SAR

Generic Twin Phantom; Flat Section; Probe: ET3DV6 - SN1560 -- Probe Cal Date 20/02/01

Med. Parameters 2450 MHz Muscle:  $\sigma = 2.20$  mho/m  $\epsilon_r = 52.0$   $\rho = 1.00$  g/cm<sup>3</sup>; Antenna Position -- Out; Crest Factor 1.0

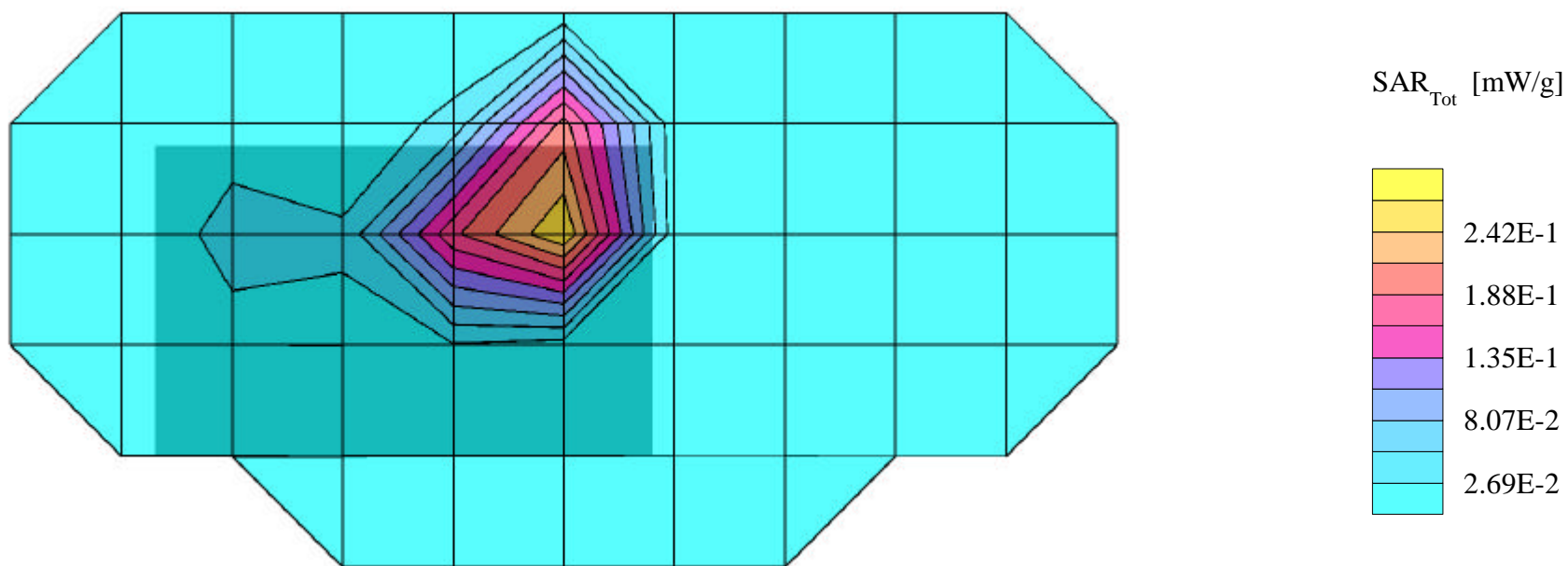
**SAR (1g): 0.637 mW/g, SAR (10g): 0.316 mW/g**

SYMBOL DSSS Scan/LAN Sled w/Integrated 11MB WLAN card (FCC ID:H9PLA4137P)

Model: SPS3046; CW (Continuous Transmit) Mode, High Channel [2462MHz]; No Beltclip, No Holster

EIRP Power = 21.5dBm; Spacing = Back panel of EUT (internal antenna side) touching flat phantom

Test Date -- 09/17/2001



# SYMBOL FCC ID:H9PLA4137SPS3046 -- 2.4GHz Hand SAR

Generic Twin Phantom; Flat Section; Probe: ET3DV6 - SN1560 -- Probe Cal Date 20/02/01

Med. Parameters 2450 MHz Muscle:  $\sigma = 2.20$  mho/m  $\epsilon_r = 52.0$   $\rho = 1.00$  g/cm<sup>3</sup>; Antenna Position -- Out; Crest Factor 1.0

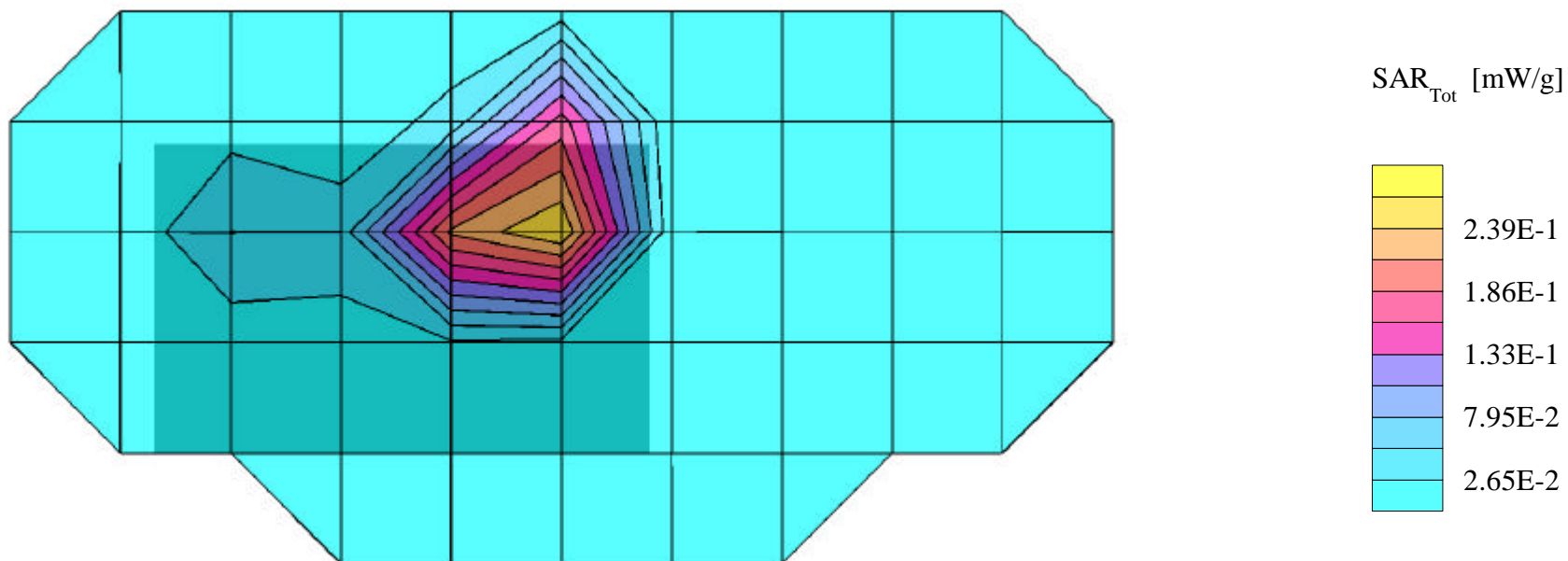
SAR (1g): 0.602 mW/g, **SAR (10g): 0.309 mW/g**

SYMBOL DSSS Scan/LAN Sled w/Integrated 11MB WLAN card (FCC ID:H9PLA4137P)

Model: SPS3046; CW (Continuous Transmit) Mode, Low Channel [2412MHz]

EIRP Power = 21.5dBm; Spacing = Back panel of EUT (internal antenna side) touching flat phantom

Test Date -- 09/17/2001



# SYMBOL FCC ID:H9PLA4137SPS3046 -- 2.4GHz Hand SAR

Generic Twin Phantom; Flat Section; Probe: ET3DV6 - SN1560 -- Probe Cal Date 20/02/01

Med. Parameters 2450 MHz Muscle:  $\sigma = 2.20$  mho/m  $\epsilon_r = 52.0$   $\rho = 1.00$  g/cm<sup>3</sup>; Antenna Position -- Out; Crest Factor 1.0

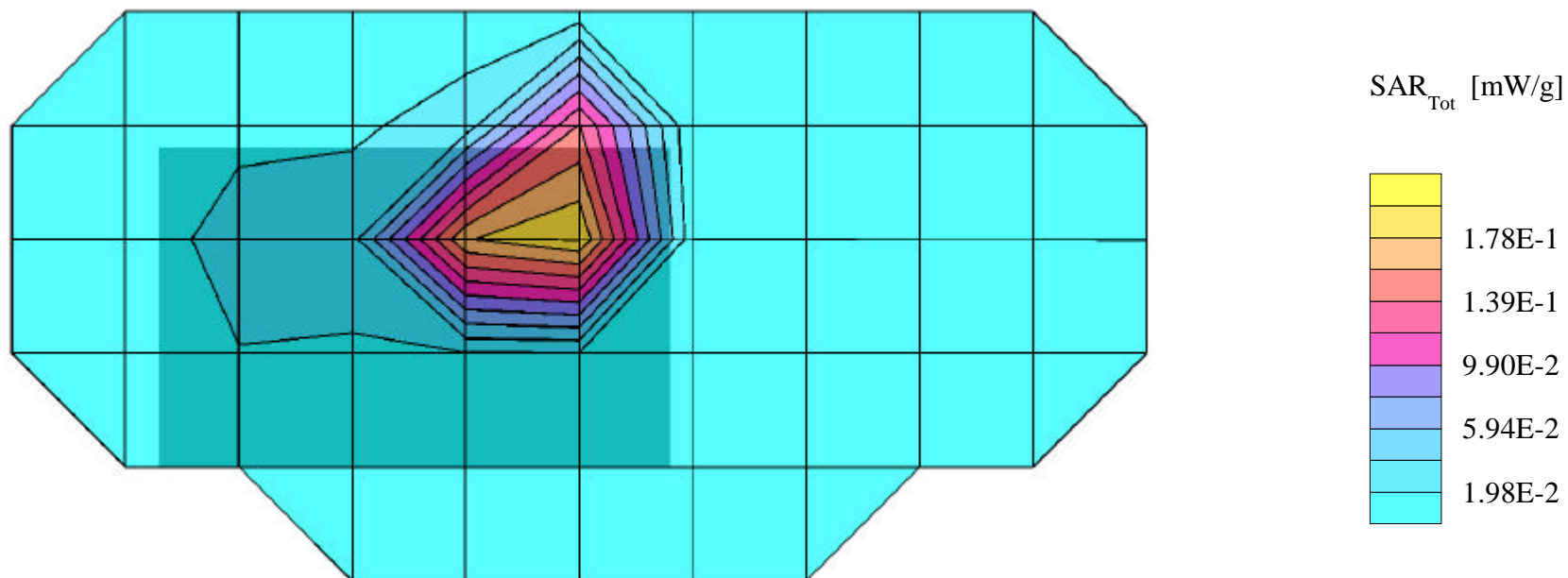
SAR (1g): 0.443 mW/g, **SAR (10g): 0.231 mW/g**

SYMBOL DSSS Scan/LAN Sled w/Integrated 11MB WLAN card (FCC ID:H9PLA4137P)

Model: SPS3046; CW (Continuous Transmit) Mode, Mid Channel [2437MHz]

EIRP Power = 21.5dBm; Spacing = Back panel of EUT (internal antenna side) touching flat phantom

Test Date -- 09/17/2001



# SYMBOL FCC ID:H9PLA4137SPS3046 -- 2.4GHz Hand SAR

Generic Twin Phantom; Flat Section; Probe: ET3DV6 - SN1560 -- Probe Cal Date 20/02/01

Med. Parameters 2450 MHz Muscle:  $\sigma = 2.20$  mho/m  $\epsilon_r = 52.0$   $\rho = 1.00$  g/cm<sup>3</sup>; Antenna Position -- Out; Crest Factor 1.0

SAR (1g): 0.638 mW/g, **SAR (10g): 0.315 mW/g**

SYMBOL DSSS Scan/LAN Sled w/Integrated 11MB WLAN card (FCC ID:H9PLA4137P)

Model: SPS3046; CW (Continuous Transmit) Mode, High Channel [2462MHz]

EIRP Power = 21.5dBm; Spacing = Back panel of EUT (internal antenna side) touching flat phantom

Test Date -- 09/17/2001

