

The Symbol logo is centered on a dark grey oval background. It features the word "symbol" in a white, lowercase, sans-serif font. A horizontal line passes through the middle of the letters "y", "o", and "l". To the right of the "l", there is a circular icon containing a stylized globe or signal pattern.

symbol

Spectrum24[®] High Rate

Compact Flash Adapter

11Mbps
Direct Sequence
IEEE 802.11b

24-21003-1 REV 3 60-21003-01 REV 3

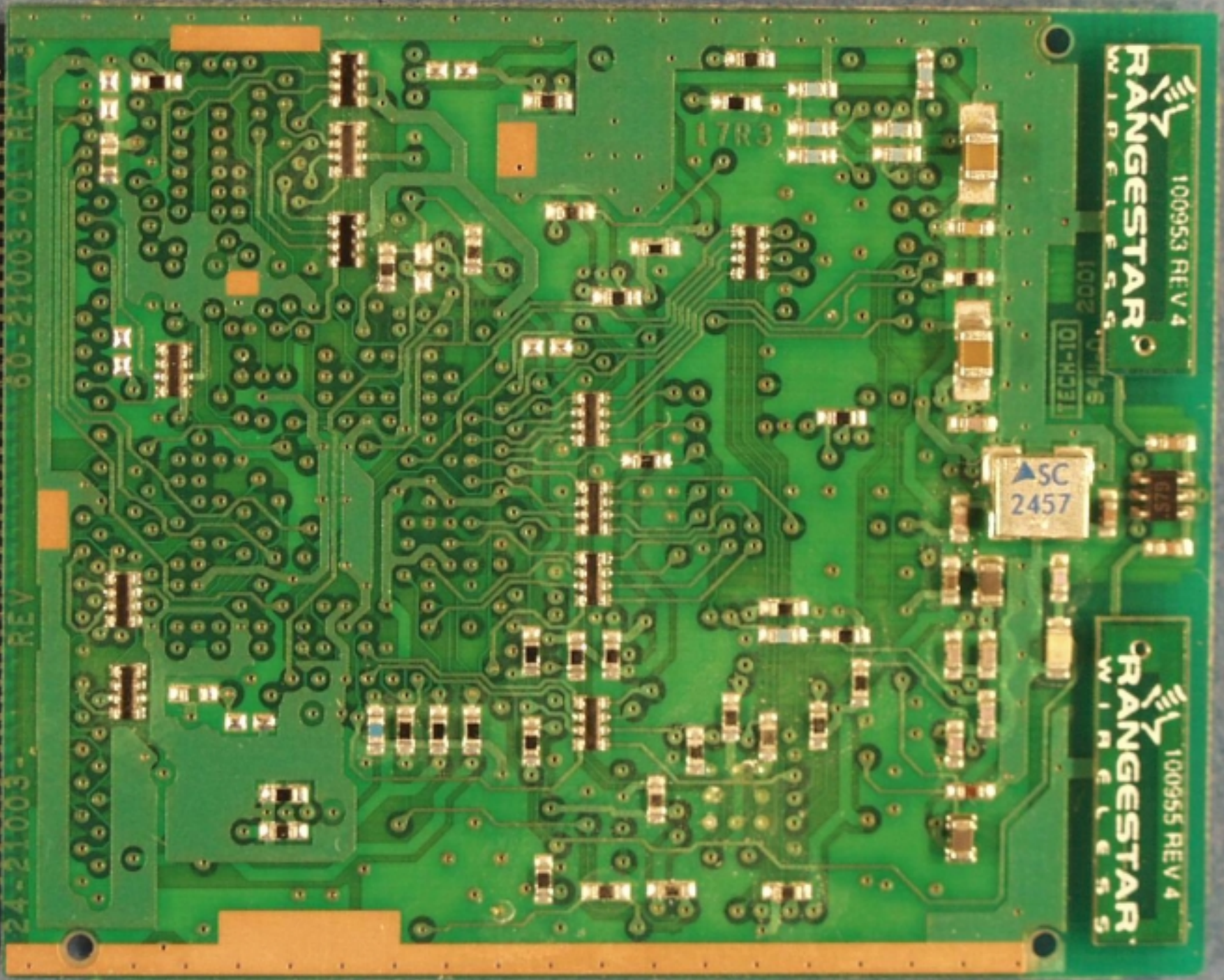
100953 REV 4
RANGESTAR
WINRELS

TECH-10
94110 2001

L7R3

SC
2457

100955 REV 4
RANGESTAR
WINRELS





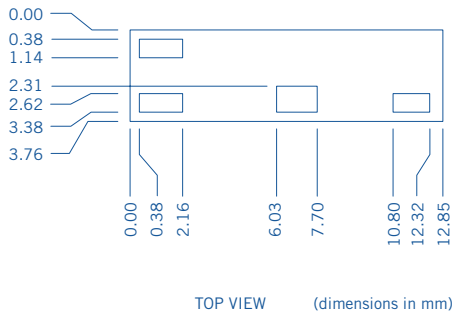
Features

- Small and lightweight
- No tuning components typically required
- Available in tape-and-reel packaging for automatic mounting

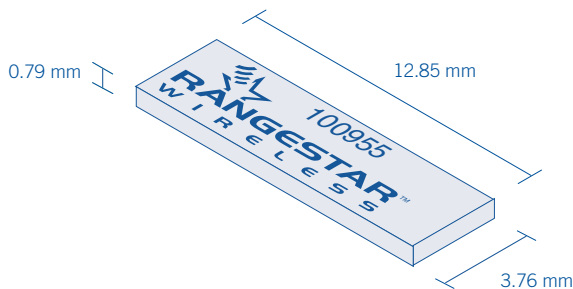
Specifications Features

Frequency Range (MHz)	2400–2483.5
Peak Gain	+2 dBi
VSWR	< 2.5 : 1
Polarization	Linear
Powerhandling	10 Watt cw
Feedpoint Impedance	50 Ohms
Weight	1 g

Mounting



Dimensions



Description

The 100953 and 100955 are surface-mounted antennas intended for use in 802.11b applications. These antennas provide excellent diversity performance at a low cost.

Typical Applications

- PCMCIA cards
- Flash cards

Customization and Integration

This standard antenna concept can be customized to your exact specifications and operational requirements. Because your device acts as the ground plane, you should consider the placement of the antenna early in the design process.

Using our design expertise and state-of-the-art facilities, our engineers will work with you to guide your product through our comprehensive six point integration process—from initial consultation and design to manufacturing and quality assurance.

For integration assistance, contact a Rangestar Wireless sales representative at:

Rangestar Wireless
9565 Soquel Dr.
Aptos, CA 95003-4153
USA

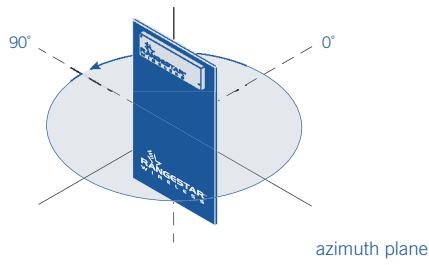
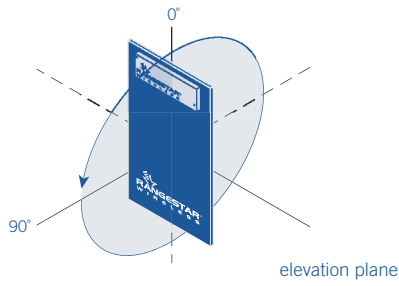
Tel: 831.661.4200
Fax: 831.661.4202

www.rangestar.com

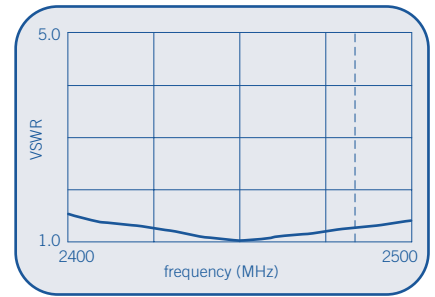
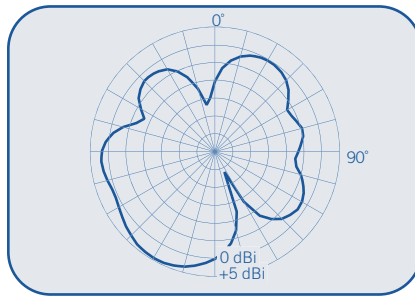
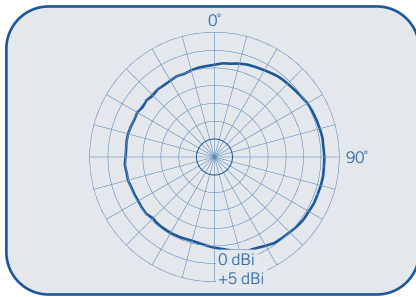
Radiation Patterns

VSWR

Legend



100953



100955

