

SAR Data Report 02050310

Start : 3-May-02 01:29:03 pm
End : 3-May-02 01:36:12 pm
Code Version : 4.08
Robot Version: 4.08

Product Data:

Type : ZEBRA
Model Number : QL320
Frequency : 2412 MHz
Transmit Pwr : 0.089 W
Antenna Posn. : Internal

Measurement Data:

Phantom Name : SAM-FLAT
Phantom Type : Uniphantom
Tissue Type : Muscle
Tissue Dielectric : 52.000
Tissue Conductivity : 1.920
Tissue Density : 1.000
Robot Name : CRS

Probe Data:

Probe Name : PCT25
Probe Type : E Fld Triangle
Frequency : 2450 MHz
Tissue Type : Muscle
Calibrated Dielectric : 49.200
Calibrated Conductivity : 1.950
Calibrated Density : 1.000
Probe Offset : 2.400 mm
Conversion Factor : 16.500
Probe Sensitivity : 0.753 0.726 0.683 mV/(mW/cm²)
Amplifier Gains : 20.00 20.00 20.00

Sample:

Rate: 6000 Samples/Sec
Count: 100 Samples
NIDAQ Gain: 5

Comments:

DSSS Mode CH-1
Body SAR
CF=1; Amb. Temp= 21.3 'C; Liq. Temp=21.0 'C

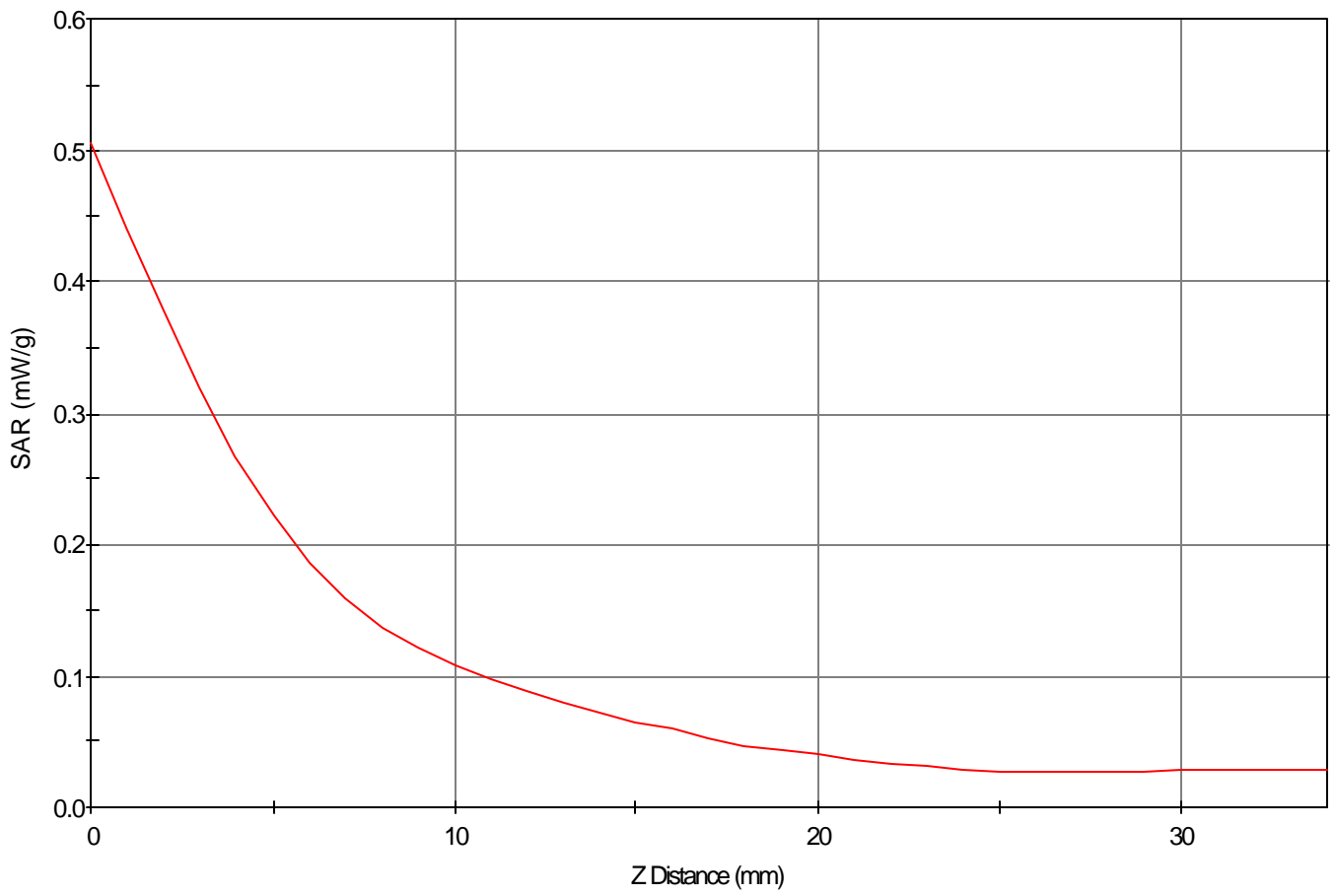
Area Scan - Max Peak SAR Value at x=20.0 y=-46.0 = 0.23 W/kg

Zoom Scan - Max Peak SAR Value at x=21.0 y=-51.0 z=0.0 = 0.51 W/kg

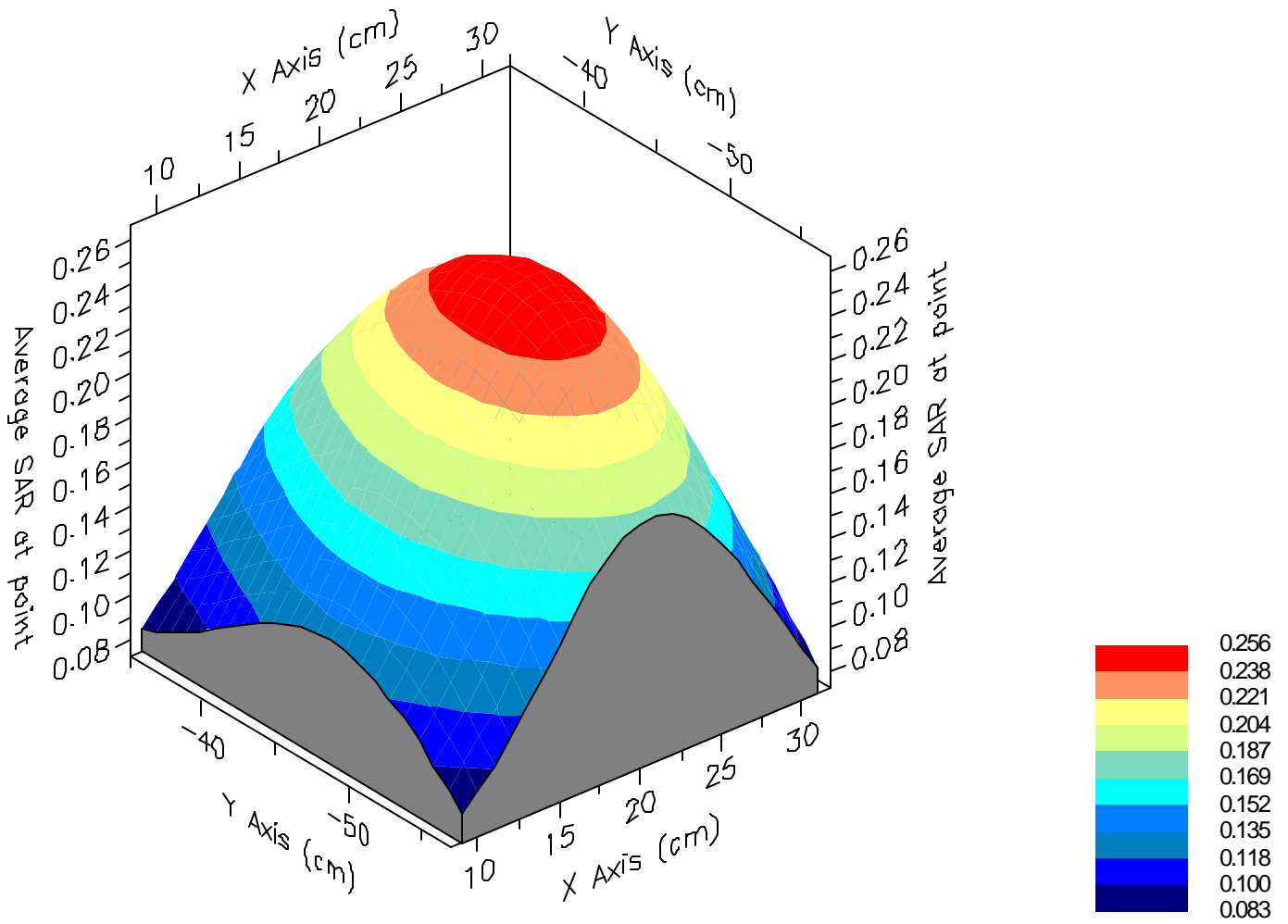
Max 1g SAR at x=21.0 y=-48.0 z=0.0 = 0.26 W/kg

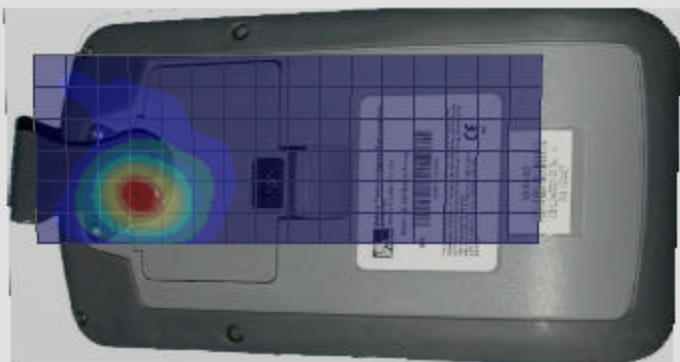
Max 10g SAR at x=21.0 y=-46.0 z=0.0 = 0.12 W/kg

SAR - Z Axis
at Hotspot x:21.0 y:-51.0



1g SAR Values





SAR Data Report 02050309

Start : 3-May-02 01:21:02 pm
End : 3-May-02 01:28:19 pm
Code Version : 4.08
Robot Version: 4.08

Product Data:

Type : ZEBRA
Model Number : QL320
Frequency : 2437 MHz
Transmit Pwr : 0.089 W
Antenna Posn. : Internal

Measurement Data:

Phantom Name : SAM-FLAT
Phantom Type : Uniphantom
Tissue Type : Muscle
Tissue Dielectric : 52.000
Tissue Conductivity : 1.920
Tissue Density : 1.000
Robot Name : CRS

Probe Data:

Probe Name : PCT25
Probe Type : E Fld Triangle
Frequency : 2450 MHz
Tissue Type : Muscle
Calibrated Dielectric : 49.200
Calibrated Conductivity : 1.950
Calibrated Density : 1.000
Probe Offset : 2.400 mm
Conversion Factor : 16.500
Probe Sensitivity : 0.753 0.726 0.683 mV/(mW/cm²)
Amplifier Gains : 20.00 20.00 20.00

Sample:

Rate: 6000 Samples/Sec
Count: 100 Samples
NIDAQ Gain: 5

Comments:

DSSS Mode CH-6
Body SAR
CF=1; Amb. Temp= 21.3 'C; Liq. Temp=21.0 'C

Area Scan - Max Peak SAR Value at x=19.0 y=-47.0 = 0.22 W/kg

Zoom Scan - Max Peak SAR Value at x=20.0 y=-48.0 z=0.0 = 0.49 W/kg

Max 1g SAR at x=21.0 y=-48.0 z=0.0 = 0.25 W/kg

Max 10g SAR at x=21.0 y=-47.0 z=0.0 = 0.11 W/kg

SAR Data Report 02050308

Start : 3-May-02 01:11:03 pm
End : 3-May-02 01:18:08 pm
Code Version : 4.08
Robot Version: 4.08

Product Data:

Type : ZEBRA
Model Number : QL320
Frequency : 2462 MHz
Transmit Pwr : 0.089 W
Antenna Posn. : Internal

Measurement Data:

Phantom Name : SAM-FLAT
Phantom Type : Uniphantom
Tissue Type : Muscle
Tissue Dielectric : 52.000
Tissue Conductivity : 1.920
Tissue Density : 1.000
Robot Name : CRS

Probe Data:

Probe Name : PCT25
Probe Type : E Fld Triangle
Frequency : 2450 MHz
Tissue Type : Muscle
Calibrated Dielectric : 49.200
Calibrated Conductivity : 1.950
Calibrated Density : 1.000
Probe Offset : 2.400 mm
Conversion Factor : 16.500
Probe Sensitivity : 0.753 0.726 0.683 mV/(mW/cm²)
Amplifier Gains : 20.00 20.00 20.00

Sample:

Rate: 6000 Samples/Sec
Count: 100 Samples
NIDAQ Gain: 5

Comments:

DSSS Mode CH-11
Body SAR
CF=1; Amb. Temp= 21.3 'C; Liq. Temp=21.0 'C

Area Scan - Max Peak SAR Value at x=20.0 y=-47.0 = 0.23 W/kg

Zoom Scan - Max Peak SAR Value at x=21.0 y=-47.0 z=0.0 = 0.48 W/kg

Max 1g SAR at x=21.0 y=-47.0 z=0.0 = 0.25 W/kg

Max 10g SAR at x=21.0 y=-47.0 z=0.0 = 0.12 W/kg

SAR Data Report 02050305

Start : 3-May-02 11:40:31 am
End : 3-May-02 11:47:46 am
Code Version : 4.08
Robot Version: 4.08

Product Data:

Type : ZEBRA
Model Number : QL320
Frequency : 2412 MHz
Transmit Pwr : 0.089 W
Antenna Posn. : Internal

Measurement Data:

Phantom Name : SAM-FLAT
Phantom Type : Uniphantom
Tissue Type : Muscle
Tissue Dielectric : 52.000
Tissue Conductivity : 1.920
Tissue Density : 1.000
Robot Name : CRS

Probe Data:

Probe Name : PCT25
Probe Type : E Fld Triangle
Frequency : 2450 MHz
Tissue Type : Muscle
Calibrated Dielectric : 49.200
Calibrated Conductivity : 1.950
Calibrated Density : 1.000
Probe Offset : 2.400 mm
Conversion Factor : 16.500
Probe Sensitivity : 0.753 0.726 0.683 mV/(mW/cm²)
Amplifier Gains : 20.00 20.00 20.00

Sample:

Rate: 6000 Samples/Sec
Count: 100 Samples
NIDAQ Gain: 5

Comments:

DSSS Mode CH-1
Hand SAR (front)
CF=1; Amb. Temp= 21.3 'C; Liq. Temp=21.0 'C

Area Scan - Max Peak SAR Value at x=19.0 y=-48.0 = 0.24 W/kg

Zoom Scan - Max Peak SAR Value at x=19.0 y=-48.0 z=0.0 = 0.55 W/kg

Max 1g SAR at x=20.0 y=-47.0 z=0.0 = 0.26 W/kg

Max 10g SAR at x=20.0 y=-46.0 z=0.0 = 0.12 W/kg

SAR Data Report 02050306

Start : 3-May-02 12:52:15 pm
End : 3-May-02 12:59:19 pm
Code Version : 4.08
Robot Version: 4.08

Product Data:

Type : ZEBRA
Model Number : QL320
Frequency : 2437 MHz
Transmit Pwr : 0.089 W
Antenna Posn. : Internal

Measurement Data:

Phantom Name : SAM-FLAT
Phantom Type : Uniphantom
Tissue Type : Muscle
Tissue Dielectric : 52.000
Tissue Conductivity : 1.920
Tissue Density : 1.000
Robot Name : CRS

Probe Data:

Probe Name : PCT25
Probe Type : E Fld Triangle
Frequency : 2450 MHz
Tissue Type : Muscle
Calibrated Dielectric : 49.200
Calibrated Conductivity : 1.950
Calibrated Density : 1.000
Probe Offset : 2.400 mm
Conversion Factor : 16.500
Probe Sensitivity : 0.753 0.726 0.683 mV/(mW/cm²)
Amplifier Gains : 20.00 20.00 20.00

Sample:

Rate: 6000 Samples/Sec
Count: 100 Samples
NIDAQ Gain: 5

Comments:

DSSS Mode CH-6
Hand SAR (front)
CF=1; Amb. Temp= 21.3 'C; Liq. Temp=21.0 'C

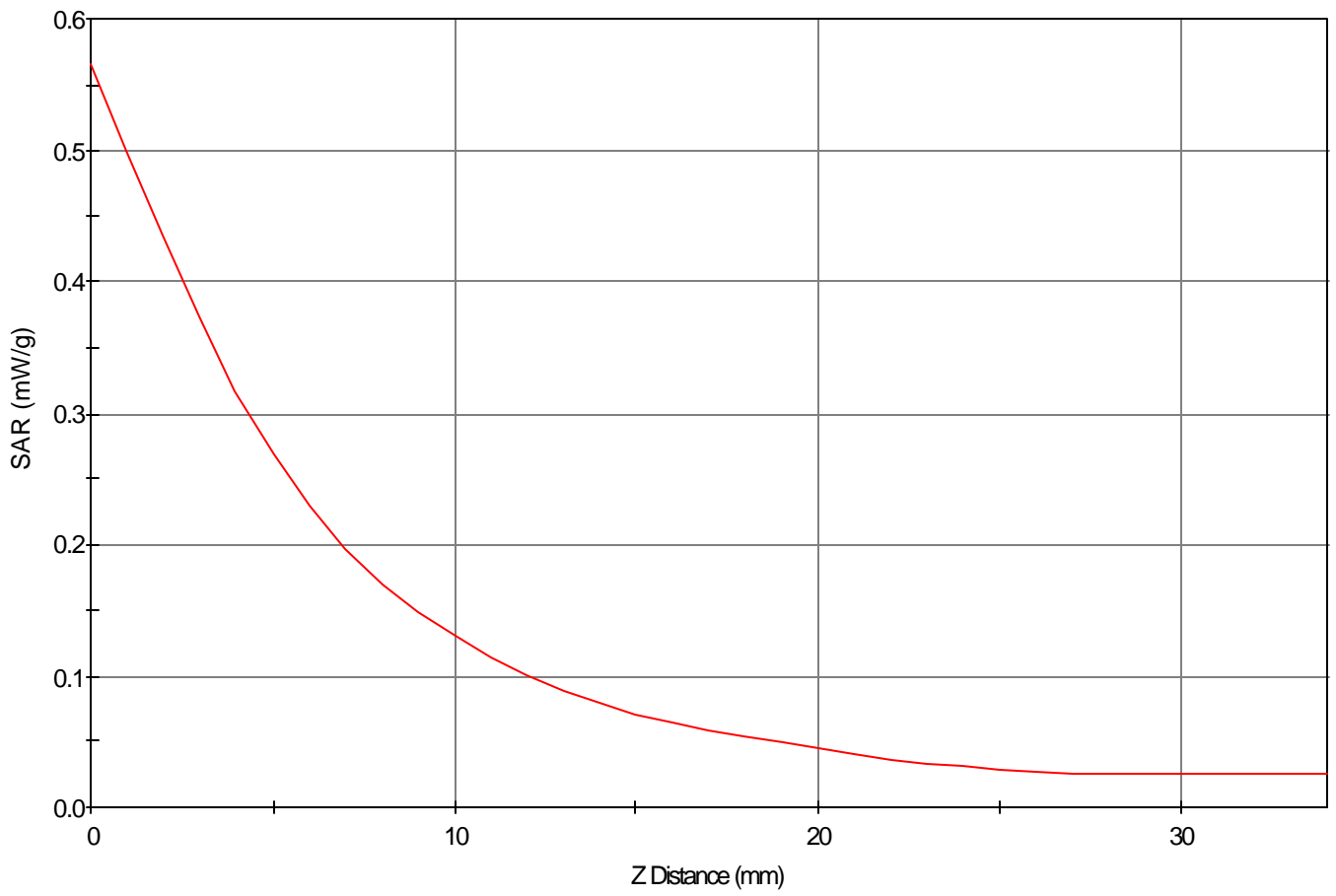
Area Scan - Max Peak SAR Value at x=20.0 y=-48.0 = 0.28 W/kg

Zoom Scan - Max Peak SAR Value at x=20.0 y=-47.0 z=0.0 = 0.56 W/kg

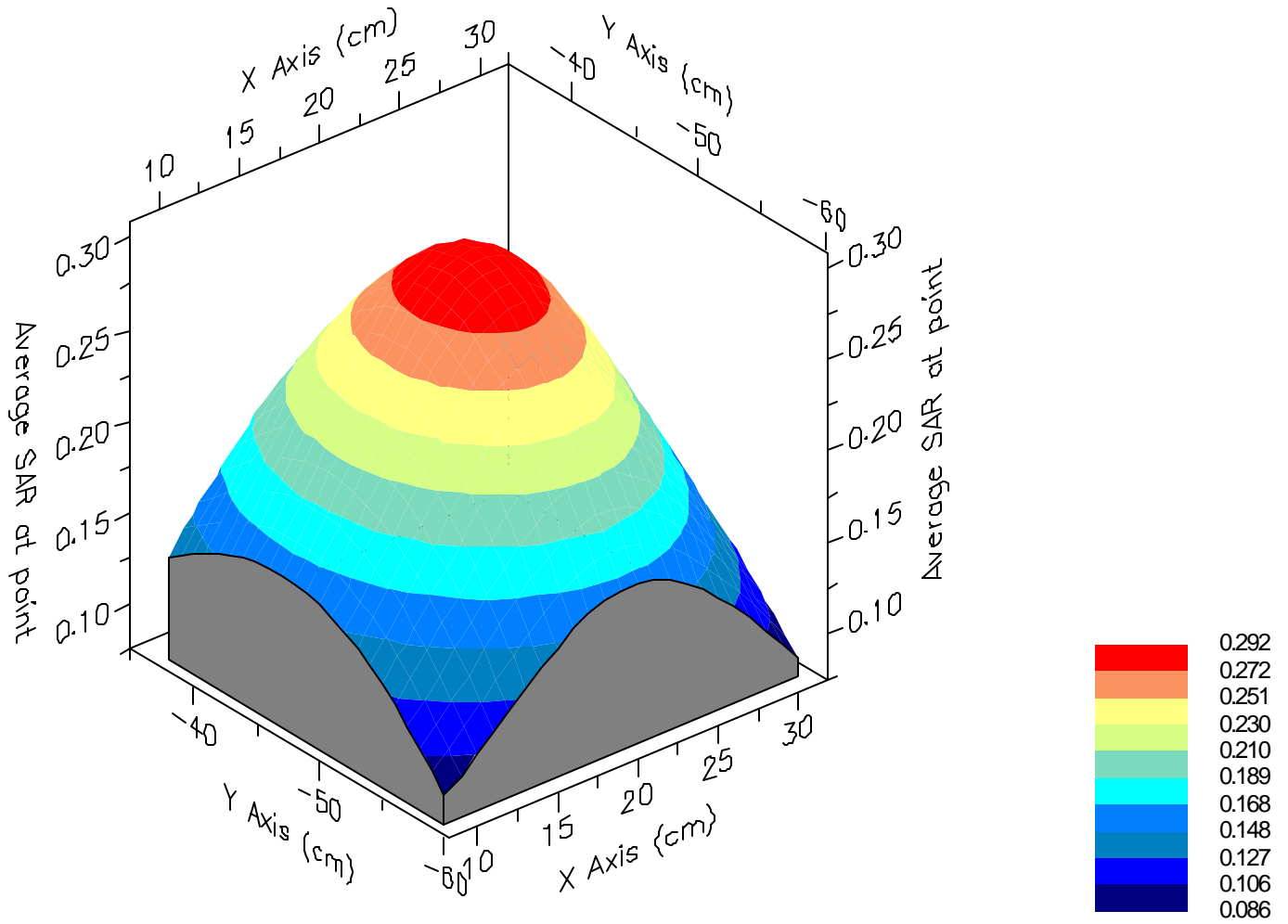
Max 1g SAR at x=21.0 y=-46.0 z=0.0 = 0.29 W/kg

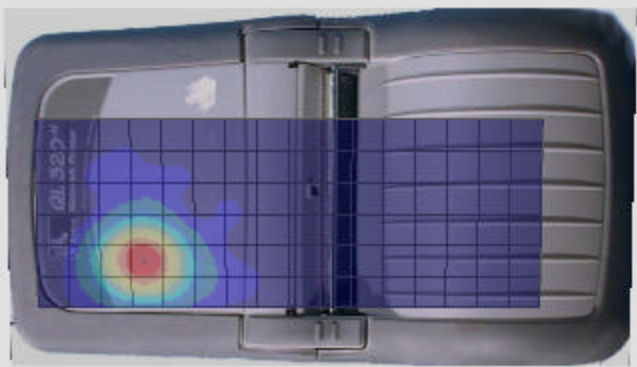
Max 10g SAR at x=20.0 y=-46.0 z=0.0 = 0.13 W/kg

SAR - Z Axis
at Hotspot x:20.0 y:-47.0



1g SAR Values





SAR Data Report 02050307

Start : 3-May-02 01:01:13 pm
End : 3-May-02 01:08:16 pm
Code Version : 4.08
Robot Version: 4.08

Product Data:

Type : ZEBRA
Model Number : QL320
Frequency : 2462 MHz
Transmit Pwr : 0.089 W
Antenna Posn. : Internal

Measurement Data:

Phantom Name : SAM-FLAT
Phantom Type : Uniphantom
Tissue Type : Muscle
Tissue Dielectric : 52.000
Tissue Conductivity : 1.920
Tissue Density : 1.000
Robot Name : CRS

Probe Data:

Probe Name : PCT25
Probe Type : E Fld Triangle
Frequency : 2450 MHz
Tissue Type : Muscle
Calibrated Dielectric : 49.200
Calibrated Conductivity : 1.950
Calibrated Density : 1.000
Probe Offset : 2.400 mm
Conversion Factor : 16.500
Probe Sensitivity : 0.753 0.726 0.683 mV/(mW/cm²)
Amplifier Gains : 20.00 20.00 20.00

Sample:

Rate: 6000 Samples/Sec
Count: 100 Samples
NIDAQ Gain: 5

Comments:

DSSS Mode CH-11
Hand SAR (front)
CF=1; Amb. Temp= 21.3 'C; Liq. Temp=21.0 'C

Area Scan - Max Peak SAR Value at x=20.0 y=-47.0 = 0.24 W/kg

Zoom Scan - Max Peak SAR Value at x=18.0 y=-46.0 z=0.0 = 0.51 W/kg

Max 1g SAR at x=20.0 y=-46.0 z=0.0 = 0.26 W/kg

Max 10g SAR at x=20.0 y=-46.0 z=0.0 = 0.12 W/kg