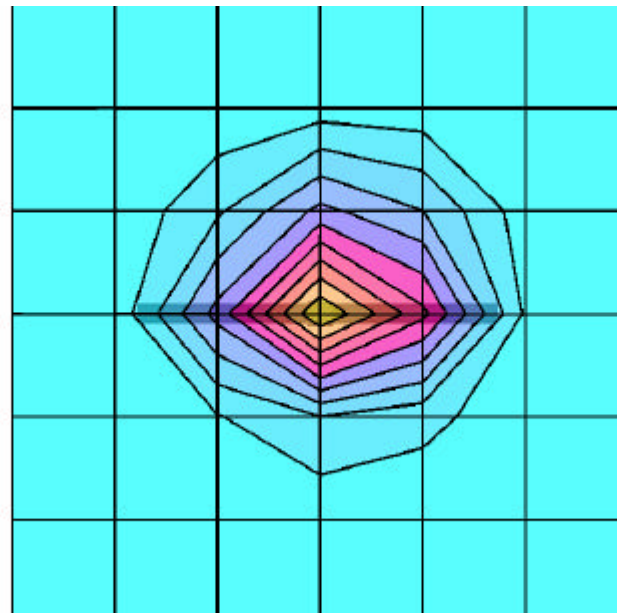


Muscle Dipole Validation

Generic Twin Phantom; Flat Section; Probe: ET3DV6 - SN1560 -- Probe Cal Date 20/02/01

Med. Parameters 1900 MHz Muscle: $\sigma = 1.52$ mho/m $\epsilon_r = 53.3$ $\rho = 1.00$ g/cm³; Antenna Position -- Out; Crest Factor 1.0
SAR (1g): 9.64 mW/g, SAR (10g): 4.96 mW/g

1900MHz Brain Dipole Validation (D1900V2 S/N: 502)
Frequency: 1900 MHz; Antenna Input Power: 250 [mW]
PCTEST Brain Tissue Simulating Liquid
Test Date -- 12/11/2001



SAR_{Tot} [mW/g]

