

# SYMBOL FCC ID: H9PLA4121PPT2846C -- 2.4GHz DSSS Body SAR

Generic Twin Phantom; Flat Section; Probe: ET3DV6 - SN1560 -- Probe Cal Date 20/02/01

Med. Parameters 2450 MHz Muscle:  $\sigma = 2.20$  mho/m  $\epsilon_r = 52.0$   $\rho = 1.00$  g/cm<sup>3</sup>; Antenna Position -- Out; Crest Factor 1.0

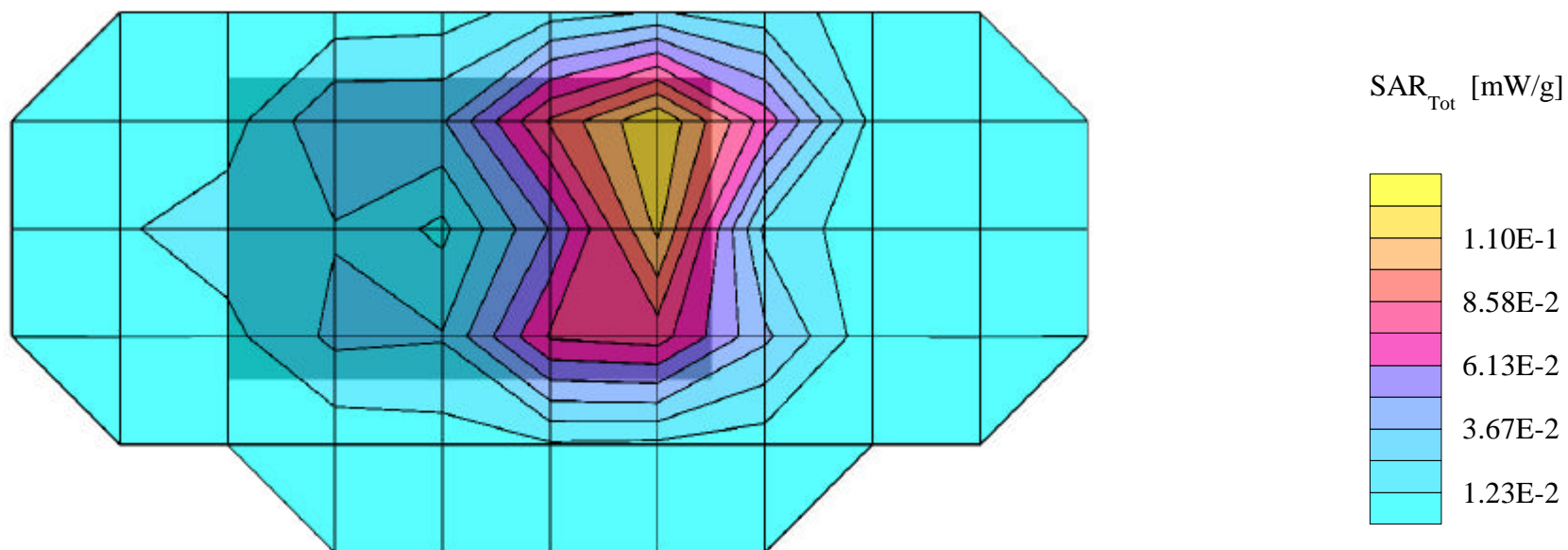
**SAR (1g): 0.195 mW/g, SAR (10g): 0.888 mW/g**

SYMBOL Pocket Color PC Terminal w/Integrated 11MB DSSS radio card (FCC ID:H9PLA4121)

Model: PPT2846C; CW Mode, Low Channel [2412MHz]

EIRP Power = 21.3dBm [135mW]; Spacing = 2.0cm from flat phantom to rear panel (internal antenna side) of EUT, w/Holster

Test Date -- 12/11/2001



# SYMBOL FCC ID: H9PLA4121PPT2846C -- 2.4GHz DSSS Body SAR

Generic Twin Phantom; Flat Section; Probe: ET3DV6 - SN1560 -- Probe Cal Date 20/02/01

Med. Parameters 2450 MHz Muscle:  $\sigma = 2.20$  mho/m  $\epsilon_r = 52.0$   $\rho = 1.00$  g/cm<sup>3</sup>; Antenna Position -- Out; Crest Factor 1.0

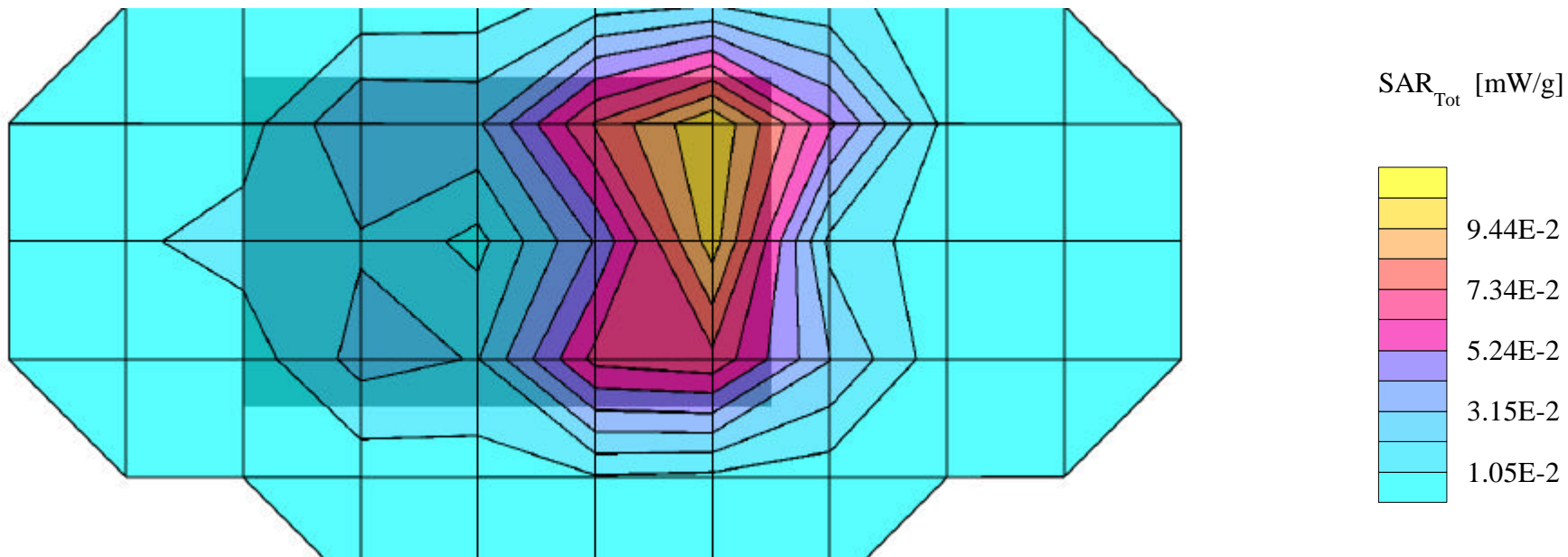
**SAR (1g): 0.178 mW/g, SAR (10g): 0.0809 mW/g**

SYMBOL Pocket Color PC Terminal w/Integrated 11MB DSSS radio card (FCC ID:H9PLA4121)

Model: PPT2846C; CW Mode, Mid Channel [2437MHz]

EIRP Power = 21.3dBm [135mW]; Spacing = 2.0cm from flat phantom to rear panel (internal antenna side) of EUT, w/Holster

Test Date -- 12/11/2001



# SYMBOL FCC ID: H9PLA4121PPT2846C -- 2.4GHz DSSS Body SAR

Generic Twin Phantom; Flat Section; Probe: ET3DV6 - SN1560 -- Probe Cal Date 20/02/01

Med. Parameters 2450 MHz Muscle:  $\sigma = 2.20$  mho/m  $\epsilon_r = 52.0$   $\rho = 1.00$  g/cm<sup>3</sup>; Antenna Position -- Out; Crest Factor 1.0

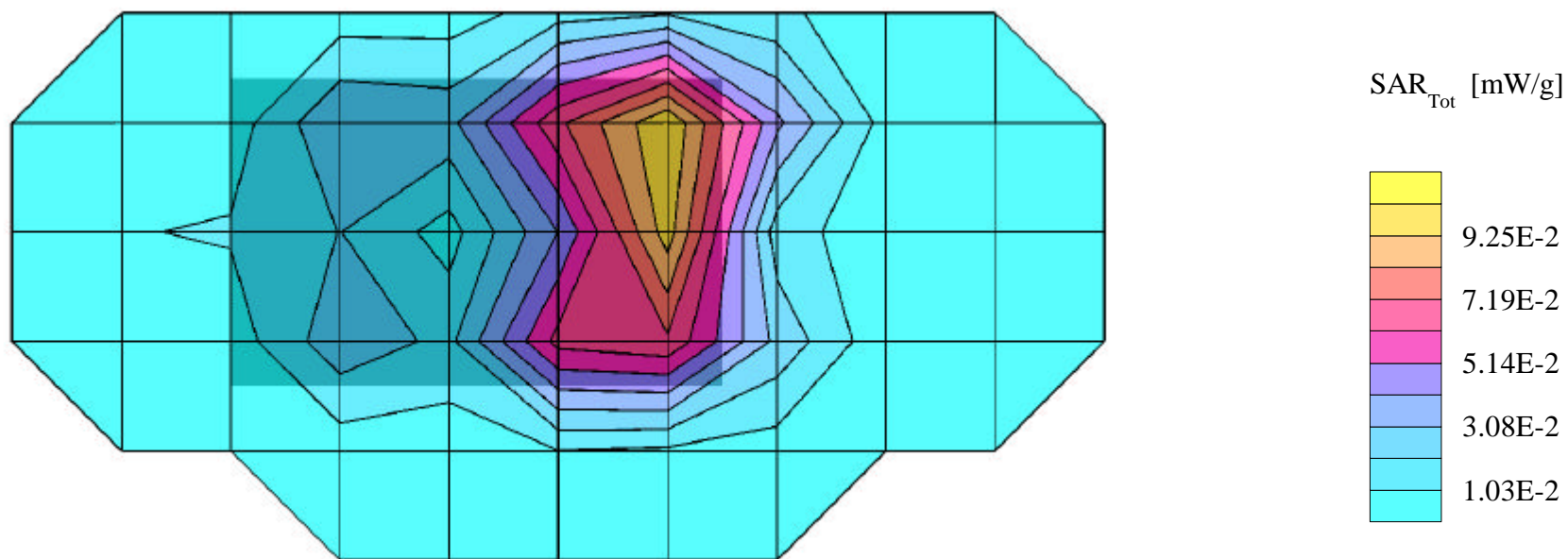
**SAR (1g): 0.168 mW/g, SAR (10g): 0.0796 mW/g**

SYMBOL Pocket Color PC Terminal w/Integrated 11MB DSSS radio card (FCC ID:H9PLA4121)

Model: PPT2846C; CW Mode, High Channel [2462MHz]

EIRP Power = 21.3dBm [135mW]; Spacing = 2.0cm from flat phantom to rear panel (internal antenna side) of EUT, w/Holster

Test Date -- 12/11/2001



# SYMBOL FCC ID: H9PLA4121PPT2846C -- 2.4GHz DSSS Hand SAR

Generic Twin Phantom; Flat Section; Probe: ET3DV6 - SN1560 -- Probe Cal Date 20/02/01

Med. Parameters 2450 MHz Muscle:  $\sigma = 2.20$  mho/m  $\epsilon_r = 52.0$   $\rho = 1.00$  g/cm<sup>3</sup>; Antenna Position -- Out; Crest Factor 1.0

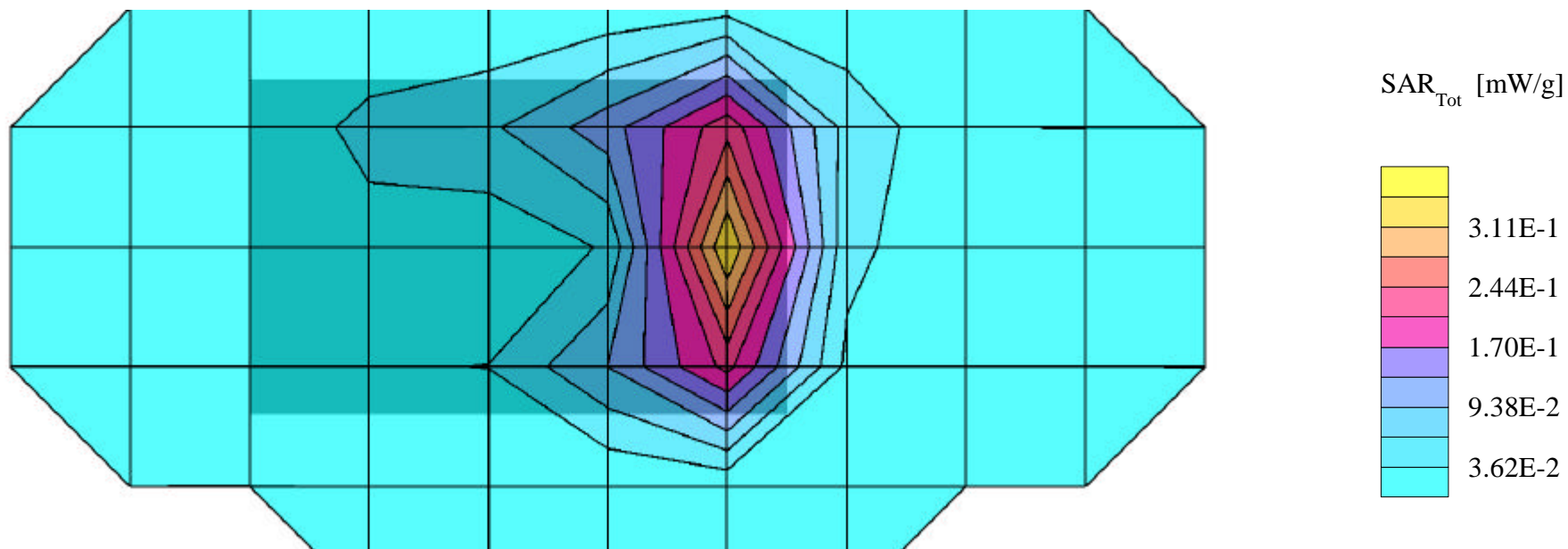
SAR (1g): 0.603 mW/g, **SAR (10g): 0.235 mW/g**

SYMBOL Pocket Color PC Terminal w/Integrated 11MB DSSS radio card (FCC ID:H9PLA4121)

Model: PPT2846C; CW Mode, Low Channel [2412MHz]

EIRP Power = 21.3dBm [135mW]; Spacing = back of EUT (internal antenna side) touching flat phantom

Test Date -- 12/11/2001



# SYMBOL FCC ID: H9PLA4121PPT2846C -- 2.4GHz DSSS Hand SAR

Generic Twin Phantom; Flat Section; Probe: ET3DV6 - SN1560 -- Probe Cal Date 20/02/01

Med. Parameters 2450 MHz Muscle:  $\sigma = 2.20$  mho/m  $\epsilon_r = 52.0$   $\rho = 1.00$  g/cm<sup>3</sup>; Antenna Position -- Out; Crest Factor 1.0

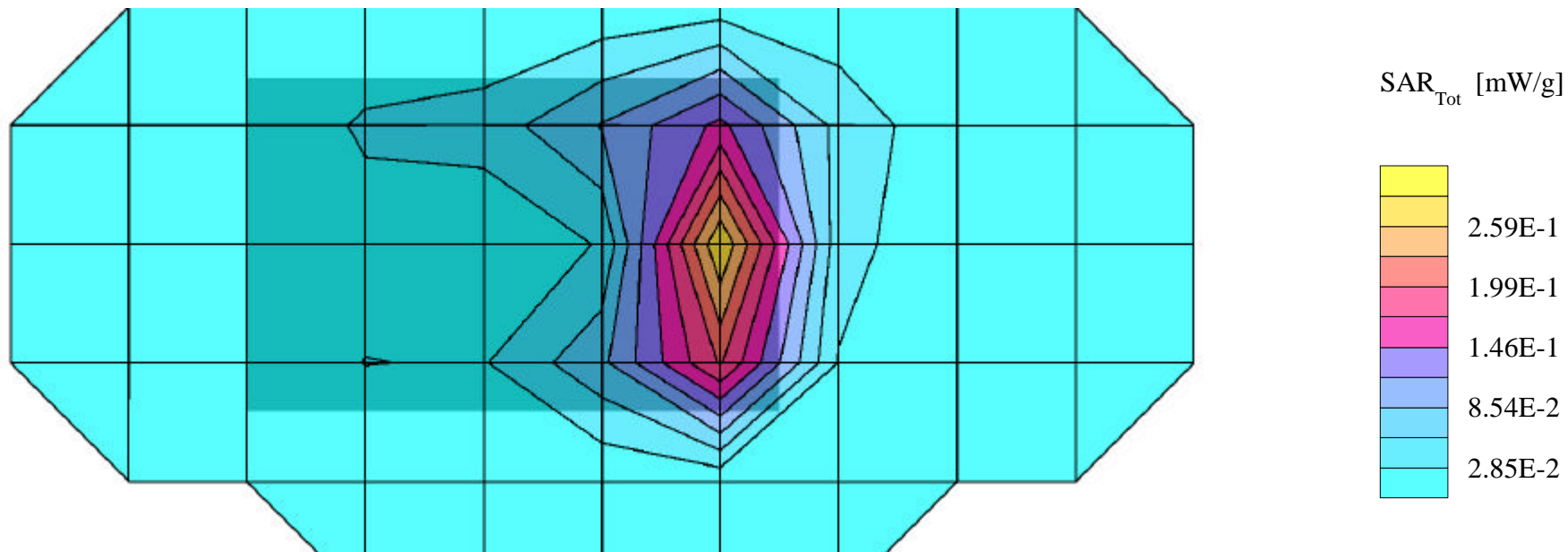
SAR (1g): 0.447 mW/g, **SAR (10g): 0.172 mW/g**

SYMBOL Pocket Color PC Terminal w/Integrated 11MB DSSS radio card (FCC ID:H9PLA4121)

Model: PPT2846C; CW Mode, Mid Channel [2437MHz]

EIRP Power = 21.3dBm [135mW]; Spacing = back of EUT (internal antenna side) touching flat phantom

Test Date -- 12/11/2001



# SYMBOL FCC ID: H9PLA4121PPT2846C -- 2.4GHz DSSS Hand SAR

Generic Twin Phantom; Flat Section; Probe: ET3DV6 - SN1560 -- Probe Cal Date 20/02/01

Med. Parameters 2450 MHz Muscle:  $\sigma = 2.20$  mho/m  $\epsilon_r = 52.0$   $\rho = 1.00$  g/cm<sup>3</sup>; Antenna Position -- Out; Crest Factor 1.0

SAR (1g): 0.385 mW/g, **SAR (10g): 0.147 mW/g**

SYMBOL Pocket Color PC Terminal w/Integrated 11MB DSSS radio card (FCC ID:H9PLA4121)

Model: PPT2846C; CW Mode, High Channel [2462MHz]

EIRP Power = 21.3dBm [135mW]; Spacing = back of EUT (internal antenna side) touching flat phantom

Test Date -- 12/11/2001

