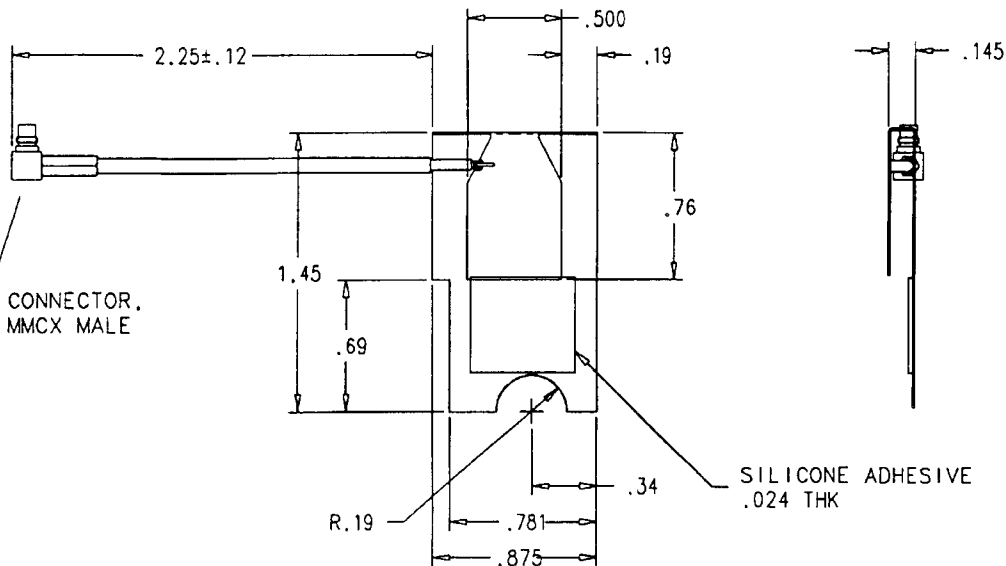


TECOM PROPRIETARY:  
 INFORMATION CONTAINED HEREIN SHALL NOT BE DISCLOSED TO  
 A THIRD PARTY WITHOUT WRITTEN PERMISSION FROM TECOM.

REVISIONS				
ZONE	LTR	DESCRIPTION	DATE	APPROVED
	1	RELEASED AS A SYMBOL DOCUMENT PER PPD#65366	3/28/01	J. C.



6. TOLERANCES ON: .XX ±.03, .XXX ±.010, ANGLES ±0°30'0"0'0'0"
5. INTERNAL & EXTERNAL CORNERS TO BE R.03 MAX.
4. SHARP CORNERS & EDGES .005 MAX.
3. FINISH SHALL BE UNIFORM AND EXHIBIT NO EVIDENCE OF CORROSION OR OXIDATION WHEN VIEWED WITH THE UNAIDED EYE. EDGE PLATING ON CUT OR SHEARED SURFACES IS NOT REQUIRED.

### SPECIFICATIONS

FREQUENCY: 2.4-2.485 GHZ  
 VSWR 2.5:1 MAX  
 GAIN 0dB NOMINAL  
 POLARIZATION LINEAR

2. ALTERNATE:  
 MATERIAL: CRS 1008, .010 THK.  
 FINISH: BRIGHT TIN PLATE PER MIL-T-10727A, TYPE 1, ELECTRO DEPOSITED .00010-.00025 IN.
1. MATERIAL: ELECTROLYTIC TIN PLATED STEEL SHEET, .010 THK.

PWIC	UNLESS OTHERWISE SPECIFIED: DIMENSIONS ARE IN INCHES. TOLERANCES: .XX ± .0303 .XXX ± .0101 ANGLES ± 0°30'0"		CONTRACT NUMBER	
	MACHINED SURFACE ROUGHNESS 125 REMOVE BURRS. SHARP EDGES R.005-.015 MACHINED FILLETS R.005-.015 DIMENSIONS ARE AFTER PLATING. MACHINED DIA'S ON COMMON CENTERLINE CONCENTRIC WITHIN .005 TIR. INTERPRET PER AMS Y14.2M-1962.		CONTRACTOR	
	HOLE TOLERANCES:		DRAWN BY	DATE
	.040 - .126 +.003 -.001 .136 - .226 +.004 -.001 .234 - .500 +.008 -.001		J. LOWE	6-29-00
NEXT ASSY		USED ON	CHECKER	MFG ENGR
APPLICATION		MATL ENGR	QA	ENGR
		APPROVAL	PRGM MGR	ENGR



TITLE		
ANTENNA, 2.4 GHZ		
SIZE	CAGE CODE	DWG NO
C	52791	703676
SCALE	UNIT WT	SHEET
2/1		1 OF 1

NOTES . UNLESS OTHERWISE SPECIFIED

