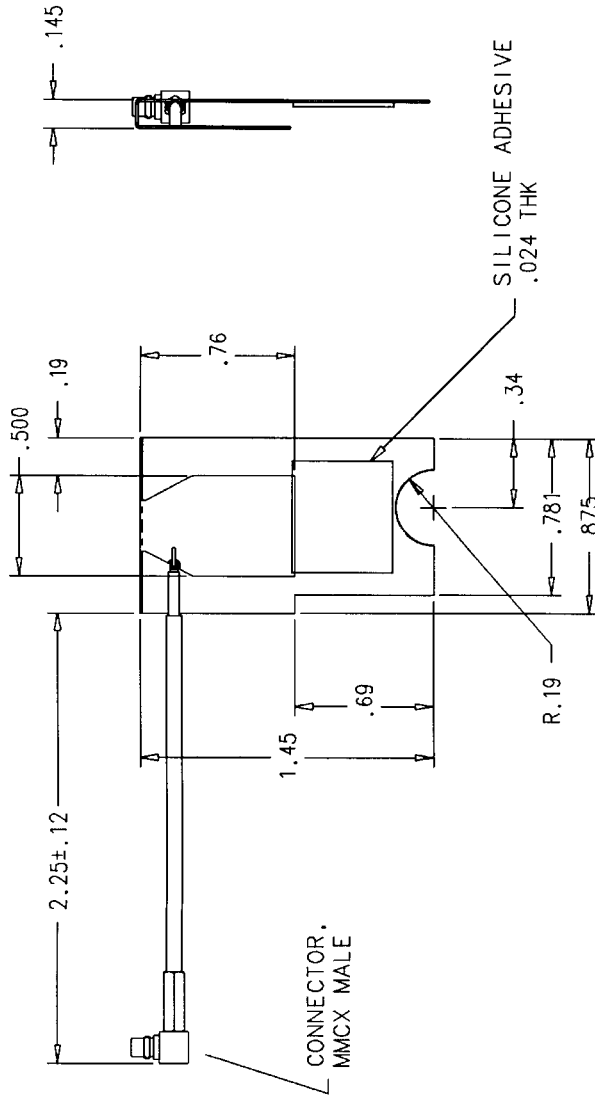


TECOM PROPRIETARY:
 INFORMATION CONTAINED HEREIN SHALL NOT BE DISCLOSED TO
 A THIRD PARTY WITHOUT WRITTEN PERMISSION FROM TECOM.

REVISIONS

ZONE	LTR	DESCRIPTION	DATE	APPROVED
1		RELEASED AS A SYMBOL DOCUMENT PER PPD#65366	3/28/01	J. C.



6. TOLERANCES ON: .XX ± .03, .XXX ± .010, ANGLES ± 0°30'0"0'0'

5. INTERNAL & EXTERNAL CORNERS TO BE R.03 MAX.

4. SHARP CORNERS & EDGES .005 MAX.

3. FINISH SHALL BE UNIFORM AND EXHIBIT NO EVIDENCE OF CORROSION OR OXIDATION WHEN VIEWED WITH THE UNAIDED EYE. EDGE PLATING ON CUT OR SHEARED SURFACES IS NOT REQUIRED.

2. ALTERNATE:
 MATERIAL: CRS 1008, .010 THK.
 FINISH: BRIGHT TIN PLATE PER MIL-T-10727A, TYPE 1, ELECTRO DEPOSITED .00010-.00025 IN.
 1. MATERIAL: ELECTROLYTIC TIN PLATED STEEL SHEET, .010 THK.

SPECIFICATIONS

FREQUENCY: 2.4-2.485 GHZ
 VSWR 2.5:1 MAX
 GAIN 0dBi NOMINAL
 POLARIZATION LINEAR

		TECOM INDUSTRIES, INC. 9324 TOPANGA CYN BLDG CHATSWORTH, CA. 91311 TECHNICAL EXCELLENCE COMMITTED TO QUALITY	
CONTRACT NUMBER CONTRACTOR		TITLE ANTENNA, 2.4 GHZ	
DRAWN BY J. LOWE	DATE 6-29-00	SIZE C	DWG NO 703676
CHECKER	MFG ENGR	SCALE 2/1	UNIT WT
QA	ENGR	SHEET 1 OF 1	
PRGM MGR	ENGR		
UNLESS OTHERWISE SPECIFIED: DIMENSIONS ARE IN INCHES. TOLERANCES: .XXX ± .003 ANGLES ± 0°30'0"0' MACHINED SURFACE ROUGHNESS 125- REMOVE BURRS, SHARP EDGES R.005-.015 MACHINED FILLETS R.005-.015 DIMENSIONS ARE AFTER PLATING. DIMENSIONS ON DRAWING CENTERLINE CONCERNED MATERIALS ONLY. INTERPRET PER ANSI Y14.9M-1992.		HOLE TOLERANCES: .040 - .126 ± .003 .136 - .226 ± .004 .234 - .500 ± .006 MATL ENGR APPROVAL	
PMIC		APPLICATION SCALE	
NEXT ASSY USED ON			
NOTES: UNLESS OTHERWISE SPECIFIED			