

SYMBOL FCC ID: H9PLA4121PDT8146 -- 2.4GHz DSSS Body SAR

Generic Twin Phantom; Flat Section; Probe: ET3DV6 - SN1560 -- Probe Cal Date 20/02/01

Med. Parameters 2450 MHz Muscle: $\sigma = 2.20$ mho/m $\epsilon_r = 52.0$ $\rho = 1.00$ g/cm³; Antenna Position -- Out; Crest Factor 1.0

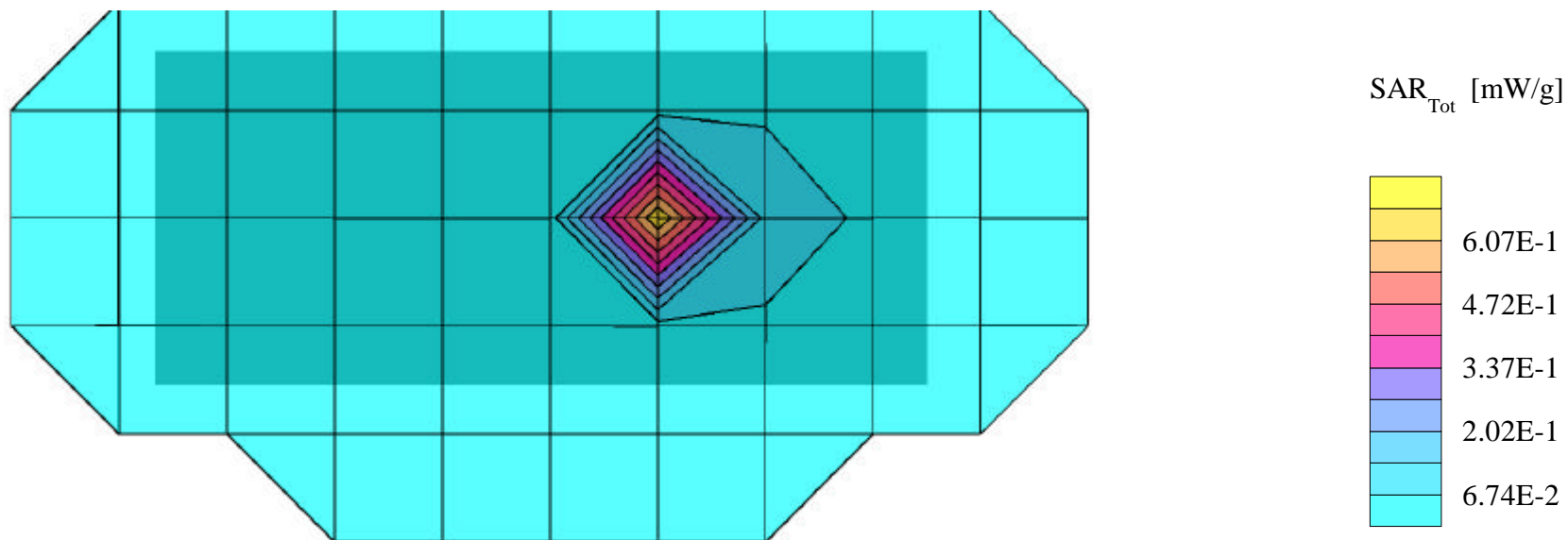
SAR (1g): 0.610 mW/g SAR (10g): 0.256 mW/g

SYMBOL Pocket PC Terminal w/Integrated 11MB DSSS radio card (FCC ID:H9PLA4121)

Model: PDT8146; CW Mode, Low Channel [2412MHz]

EIRP Power = 21.31dBm [135mW]; Spacing = 2.5cm from flat phantom to rear panel of EUT, w/Holster

Test Date -- 10/12/2001



SYMBOL FCC ID: H9PLA4121PDT8146 -- 2.4GHz DSSS Body SAR

Generic Twin Phantom; Flat Section; Probe: ET3DV6 - SN1560 -- Probe Cal Date 20/02/01

Med. Parameters 2450 MHz Muscle: $\sigma = 2.20$ mho/m $\epsilon_r = 52.0$ $\rho = 1.00$ g/cm³; Antenna Position -- Out; Crest Factor 1.0

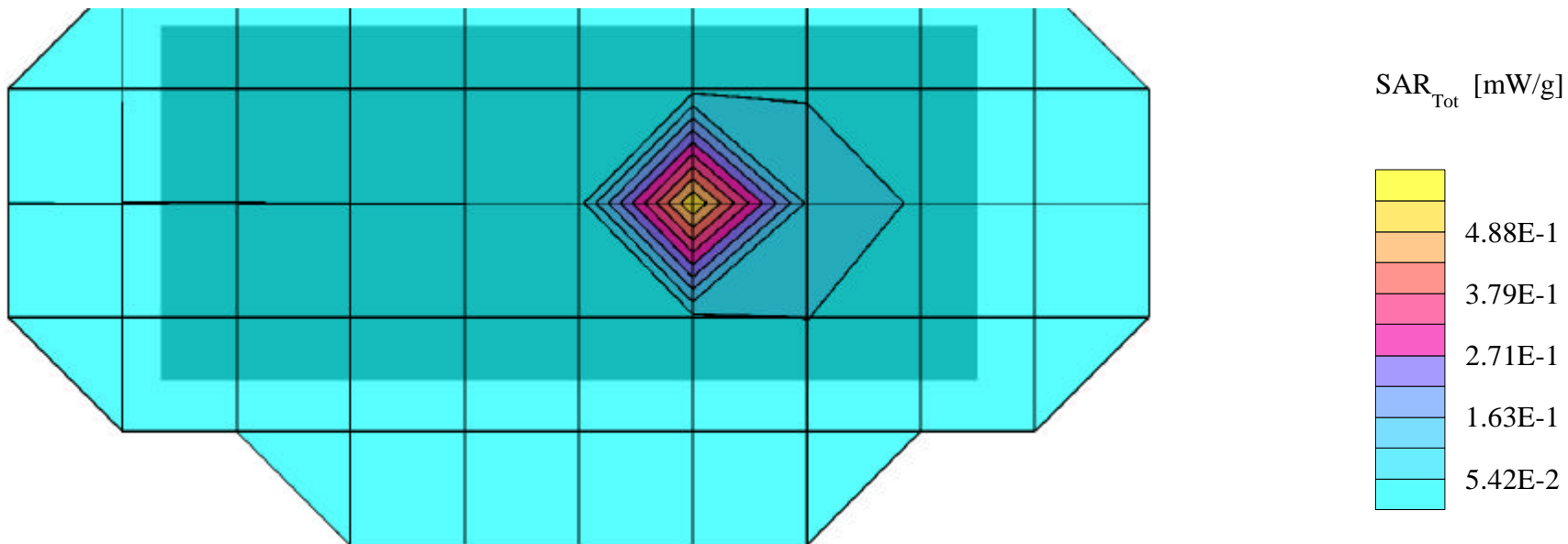
SAR (1g): 0.542 mW/g, SAR (10g): 0.233 mW/g

SYMBOL Pocket PC Terminal w/Integrated 11MB DSSS radio card (FCC ID:H9PLA4121)

Model: PDT8146; CW Mode, Mid Channel [2437MHz]

EIRP Power = 21.31dBm [135mW]; Spacing = 2.5cm from flat phantom to rear panel of EUT, w/Holster

Test Date -- 10/12/2001



SYMBOL FCC ID: H9PLA4121PDT8146 -- 2.4GHz DSSS Body SAR

Generic Twin Phantom; Flat Section; Probe: ET3DV6 - SN1560 -- Probe Cal Date 20/02/01

Med. Parameters 2450 MHz Muscle: $\sigma = 2.20$ mho/m $\epsilon_r = 52.0$ $\rho = 1.00$ g/cm³; Antenna Position -- Out; Crest Factor 1.0

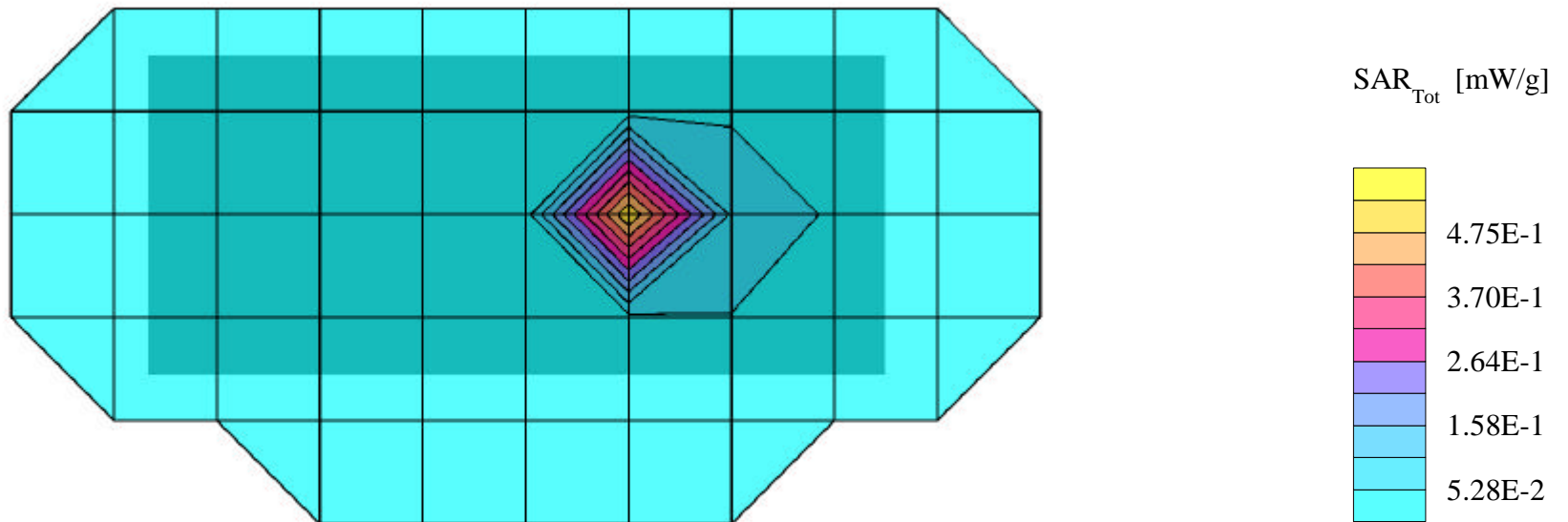
SAR (1g): 0.514 mW/g, SAR (10g): 0.220 mW/g

SYMBOL Pocket PC Terminal w/Integrated 11MB DSSS radio card (FCC ID:H9PLA4121)

Model: PDT8146; CW Mode, 1gh Channel [2462MHz]

EIRP Power = 21.31dBm [135mW]; Spacing = 2.5cm from flat phantom to rear panel of EUT, w/Holster

Test Date -- 10/12/2001



SYMBOL FCC ID: H9PLA4121PDT8146 -- 2.4GHz DSSS Hand SAR

Generic Twin Phantom; Flat Section; Probe: ET3DV6 - SN1560 -- Probe Cal Date 20/02/01

Med. Parameters 2450 MHz Muscle: $\sigma = 2.20$ mho/m $\epsilon_r = 52.0$ $\rho = 1.00$ g/cm³; Antenna Position -- Out; Crest Factor 1.0

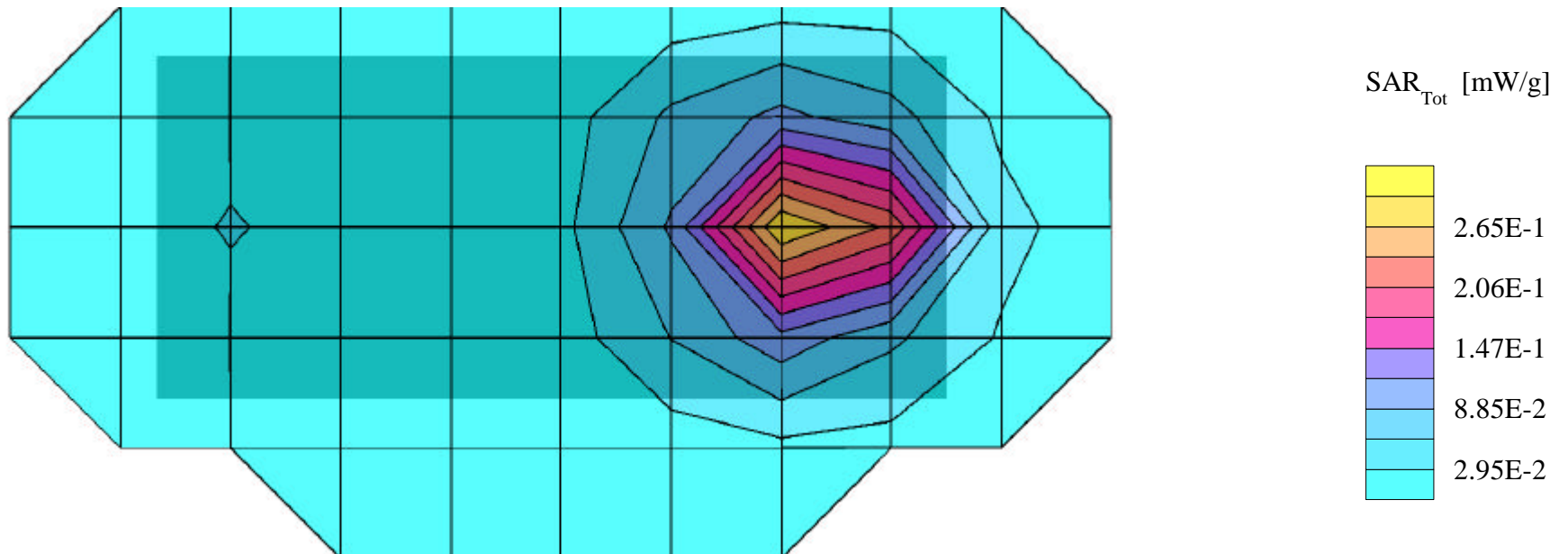
SAR (1g): 0.664 mW/g, **SAR (10g): 0.294 mW/g**

SYMBOL Pocket PC Terminal w/Integrated 11MB DSSS radio card (FCC ID:H9PLA4121)

Model: PDT8146; CW Mode, Low Channel [2412MHz]

EIRP Power = 21.31dBm [135mW]; Spacing = back of EUT (internal antenna side) touching flat phantom

Test Date -- 10/12/2001



SYMBOL FCC ID: H9PLA4121PDT8146 -- 2.4GHz DSSS Hand SAR

Generic Twin Phantom; Flat Section; Probe: ET3DV6 - SN1560 -- Probe Cal Date 20/02/01

Med. Parameters 2450 MHz Muscle: $\sigma = 2.20$ mho/m $\epsilon_r = 52.0$ $\rho = 1.00$ g/cm³; Antenna Position -- Out; Crest Factor 1.0

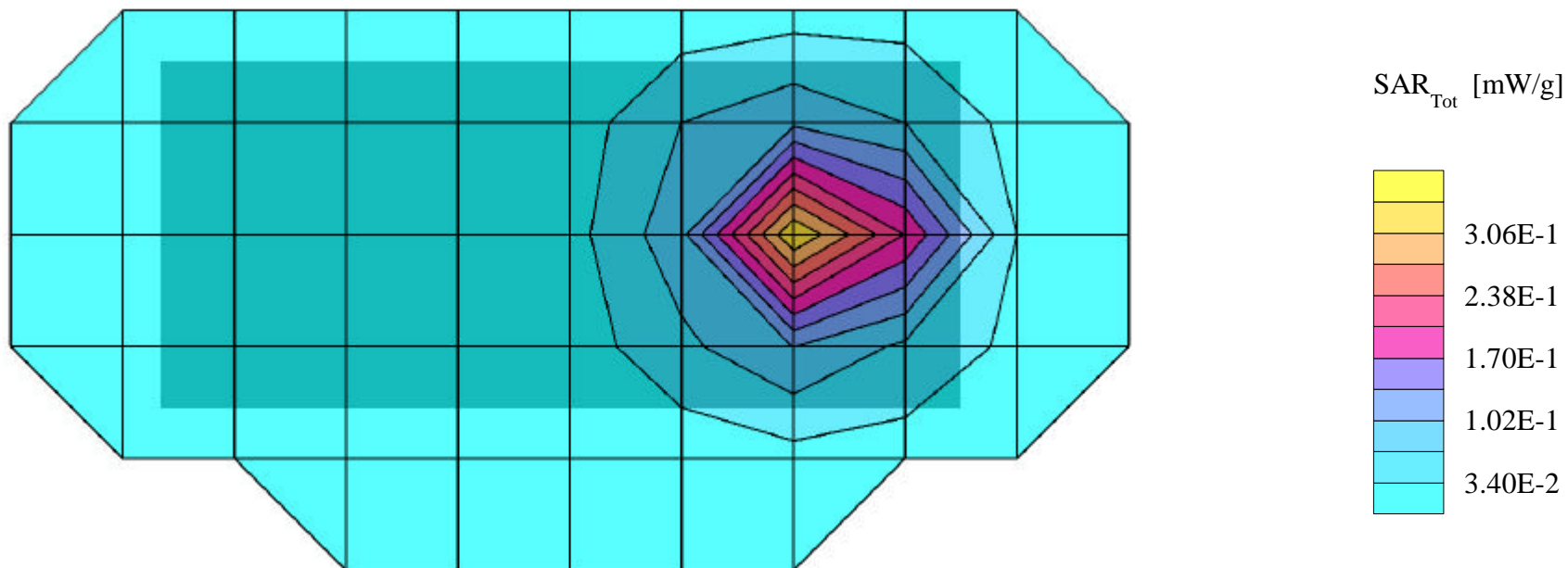
SAR (1g): 0.648 mW/g, **SAR (10g): 0.271 mW/g**

SYMBOL Pocket PC Terminal w/Integrated 11MB DSSS radio card (FCC ID:H9PLA4121)

Model: PDT8146; CW Mode, Mid Channel [2437MHz]

EIRP Power = 21.31dBm [135mW]; Spacing = back of EUT (internal antenna side) touching flat phantom

Test Date -- 10/12/2001



SYMBOL FCC ID: H9PLA4121PDT8146 -- 2.4GHz DSSS Hand SAR

Generic Twin Phantom; Flat Section; Probe: ET3DV6 - SN1560 -- Probe Cal Date 20/02/01

Med. Parameters 2450 MHz Muscle: $\sigma = 2.20$ mho/m $\epsilon_r = 52.0$ $\rho = 1.00$ g/cm³; Antenna Position -- Out; Crest Factor 1.0

SAR (1g): 0.637 mW/g, **SAR (10g): 0.259 mW/g**

SYMBOL Pocket PC Terminal w/Integrated 11MB DSSS radio card (FCC ID:H9PLA4121)

Model: PDT8146; CW Mode, High Channel [2462MHz]

EIRP Power = 21.31dBm [135mW]; Spacing = back of EUT (internal antenna side) touching flat phantom

Test Date -- 10/12/2001

