

# SYMBOL FCC ID: H9PLA4121CST3046 -- 2.4GHz DSSS Body SAR

Generic Twin Phantom; Flat Section; Probe: ET3DV6 - SN1560 -- Probe Cal Date 20/02/01

Med. Parameters 2450 MHz Muscle:  $\sigma = 2.20$  mho/m  $\epsilon_r = 52.0$   $\rho = 1.00$  g/cm<sup>3</sup>; Antenna Position -- Out; Crest Factor 1.0

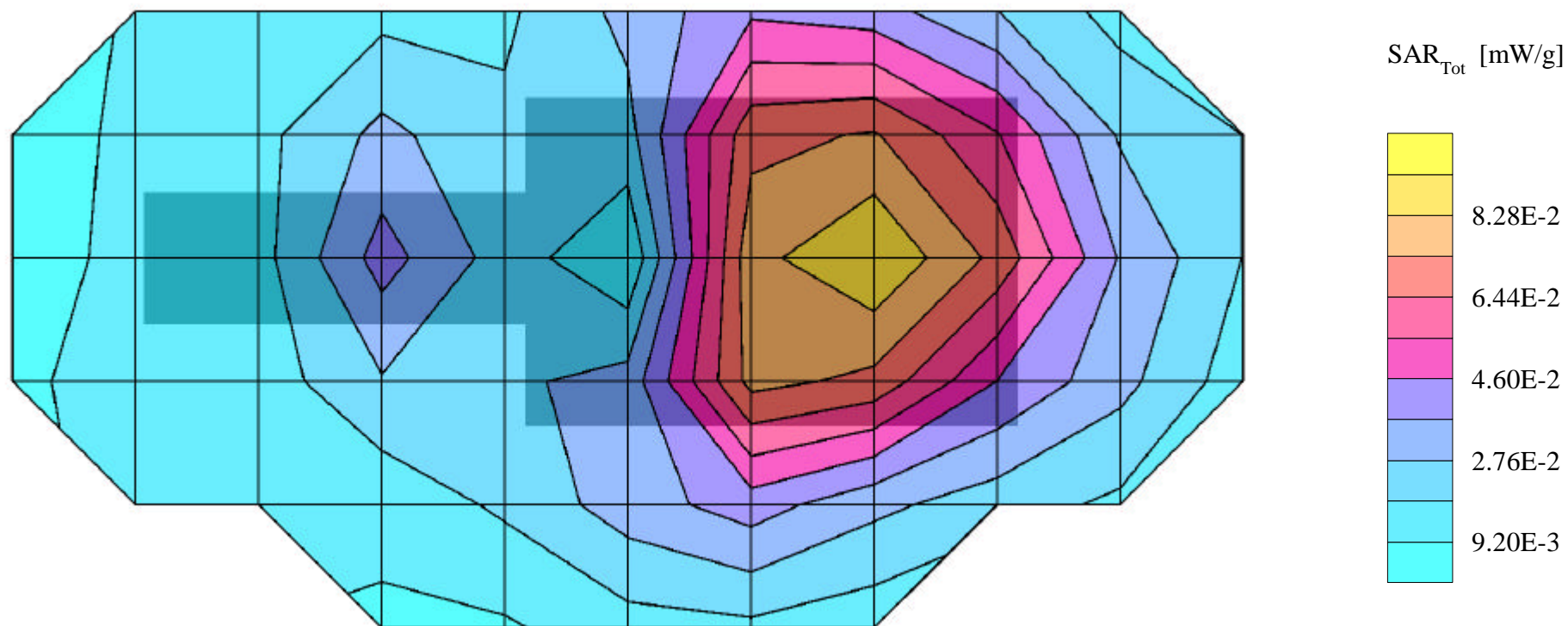
**SAR (1g): 0.470 mW/g, SAR (10g): 0.232 mW/g**

SYMBOL Asterix 3 Terminal w/ Integrated 11Mb DSSS radio card [FCC ID:H9PLA4121]

Model: CST3046; CW Mode, Low Channel [2412MHz]; Standard Battery; Flat Phantom

EIRP Power = 21.31dBm [135mW]; Spacing = Touching back panel (antenna side) of EUT to flat phantom, No BeltClip/No Holster

Test Date -- 11-20-2001



# SYMBOL FCC ID: H9PLA4121CST3046 -- 2.4GHz DSSS Body SAR

Generic Twin Phantom; Flat Section; Probe: ET3DV6 - SN1560 -- Probe Cal Date 20/02/01

Med. Parameters 2450 MHz Muscle:  $\sigma = 2.20$  mho/m  $\epsilon_r = 52.0$   $\rho = 1.00$  g/cm<sup>3</sup>; Antenna Position -- Out; Crest Factor 1.0

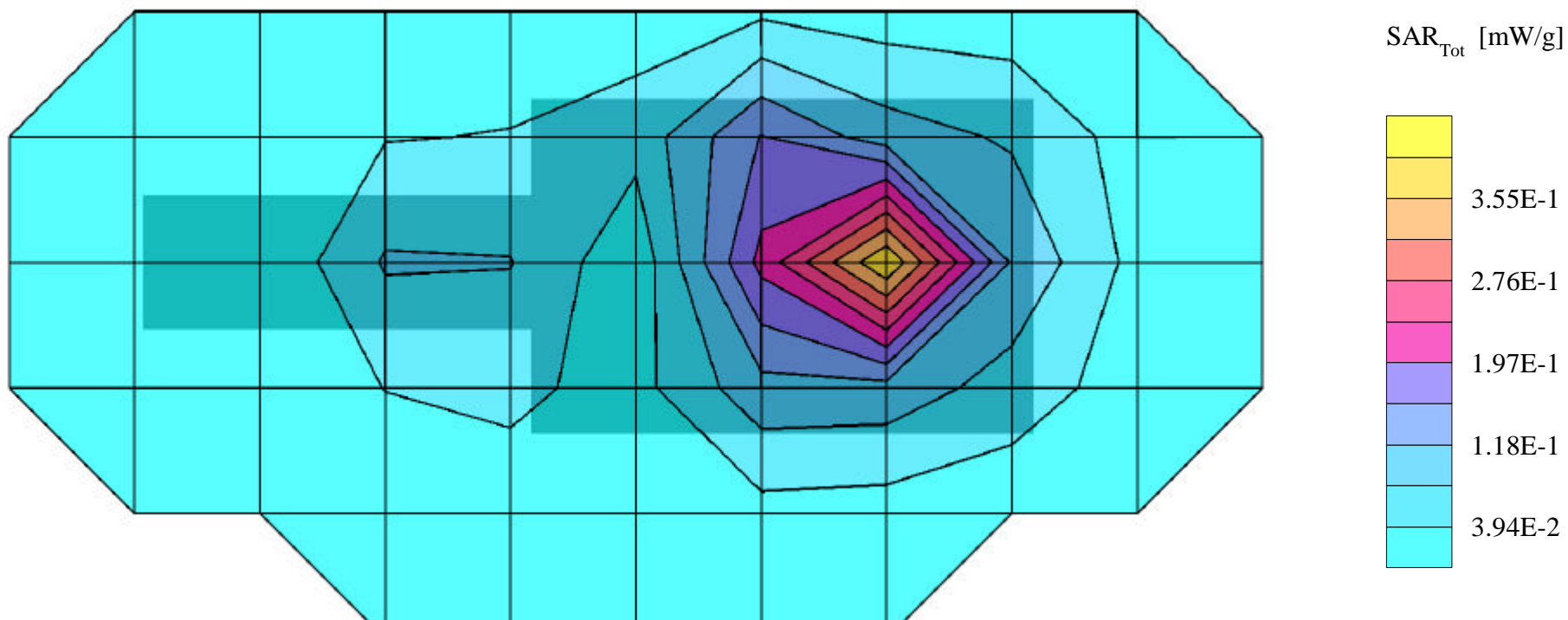
**SAR (1g): 0.499 mW/g, SAR (10g): 0.245 mW/g**

SYMBOL Asterix 3 Terminal w/ Integrated 11Mb DSSS radio card [FCC ID:H9PLA4121]

Model: CST3046; CW Mode, Mid Channel [2437MHz]; Standard Battery; Flat Phantom

EIRP Power = 21.31dBm [135mW]; Spacing = Touching back panel (antenna side) of EUT to flat phantom, No BeltClip/No Holster

Test Date -- 11-20-2001



# SYMBOL FCC ID: H9PLA4121CST3046 -- 2.4GHz DSSS Body SAR

Generic Twin Phantom; Flat Section; Probe: ET3DV6 - SN1560 -- Probe Cal Date 20/02/01

Med. Parameters 2450 MHz Muscle:  $\sigma = 2.20$  mho/m  $\epsilon_r = 52.0$   $\rho = 1.00$  g/cm<sup>3</sup>; Antenna Position -- Out; Crest Factor 1.0

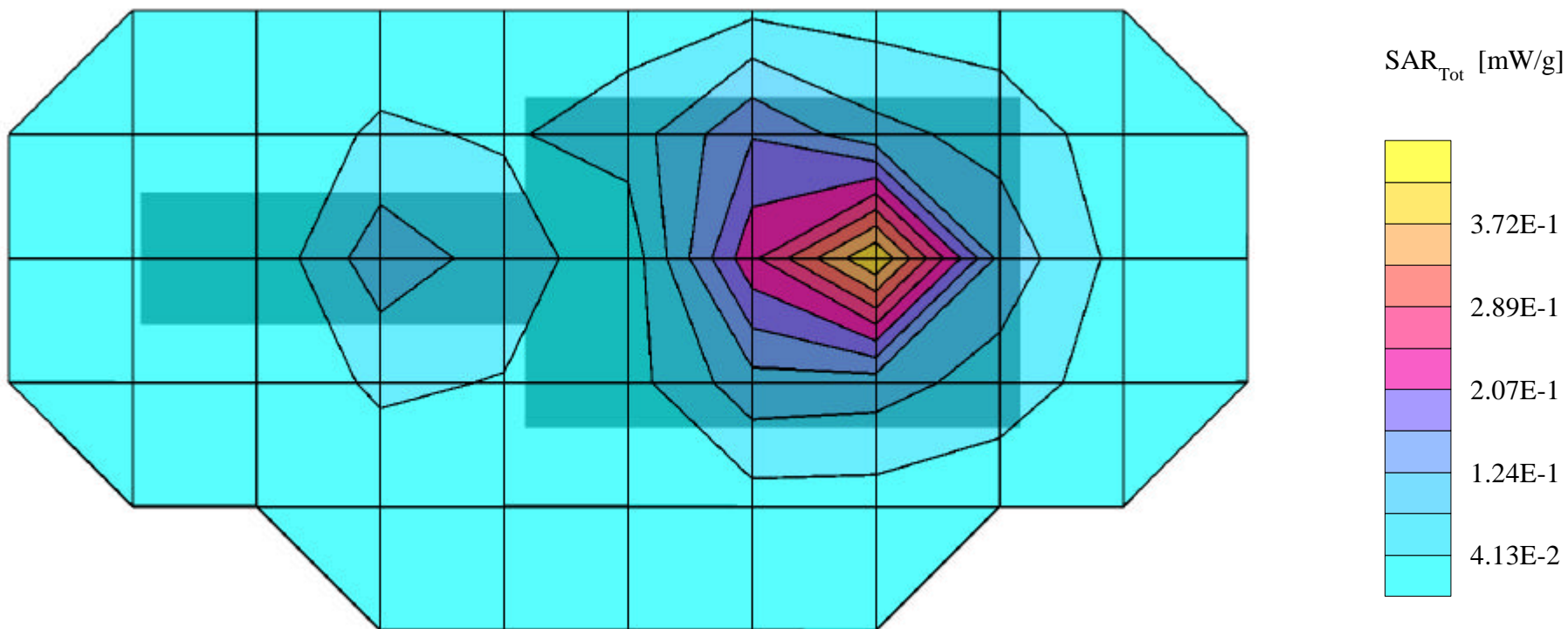
**SAR (1g): 0.538 mW/g, SAR (10g): 0.261 mW/g**

SYMBOL Asterix 3 Terminal w/ Integrated 11Mb DSSS radio card [FCC ID:H9PLA4121]

Model: CST3046; CW Mode, High Channel [2462MHz]; Standard Battery; Flat Phantom

EIRP Power = 21.31dBm [135mW]; Spacing = Touching back panel (antenna side) of EUT to flat phantom, No BeltClip/No Holster

Test Date -- 11-20-2001



# SYMBOL FCC ID: H9PLA4121CST3046 -- 2.4GHz DSSS Body SAR

Generic Twin Phantom; Flat Section; Probe: ET3DV6 - SN1560 -- Probe Cal Date 20/02/01

Med. Parameters 2450 MHz Muscle:  $\sigma = 2.20$  mho/m  $\epsilon_r = 52.0$   $\rho = 1.00$  g/cm<sup>3</sup>; Antenna Position -- Out; Crest Factor 1.0

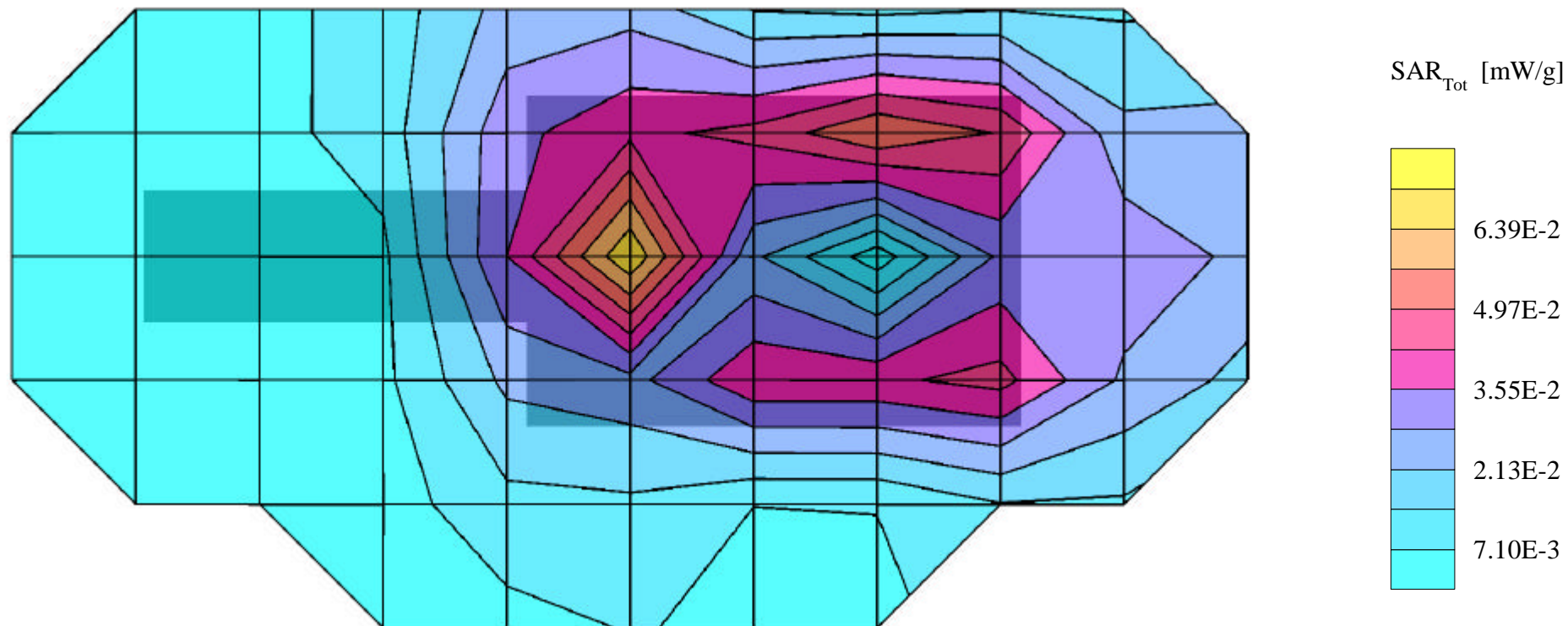
**SAR (1g): 0.0731 mW/g, SAR (10g): 0.0370 mW/g**

SYMBOL Asterix 3 Terminal w/ Integrated 11Mb DSSS radio card [FCC ID:H9PLA4121]

Model: CST3046; CW Mode, Low Channel [2412MHz]; Standard Battery; Flat Phantom

EIRP Power = 21.31dBm [135mW]; Spacing = Touching front panel (antenna flip-side) of EUT to flat phantom

Test Date -- 11-20-2001



# SYMBOL FCC ID: H9PLA4121CST3046 -- 2.4GHz DSSS Body SAR

Generic Twin Phantom; Flat Section; Probe: ET3DV6 - SN1560 -- Probe Cal Date 20/02/01

Med. Parameters 2450 MHz Muscle:  $\sigma = 2.20$  mho/m  $\epsilon_r = 52.0$   $\rho = 1.00$  g/cm<sup>3</sup>; Antenna Position -- Out; Crest Factor 1.0

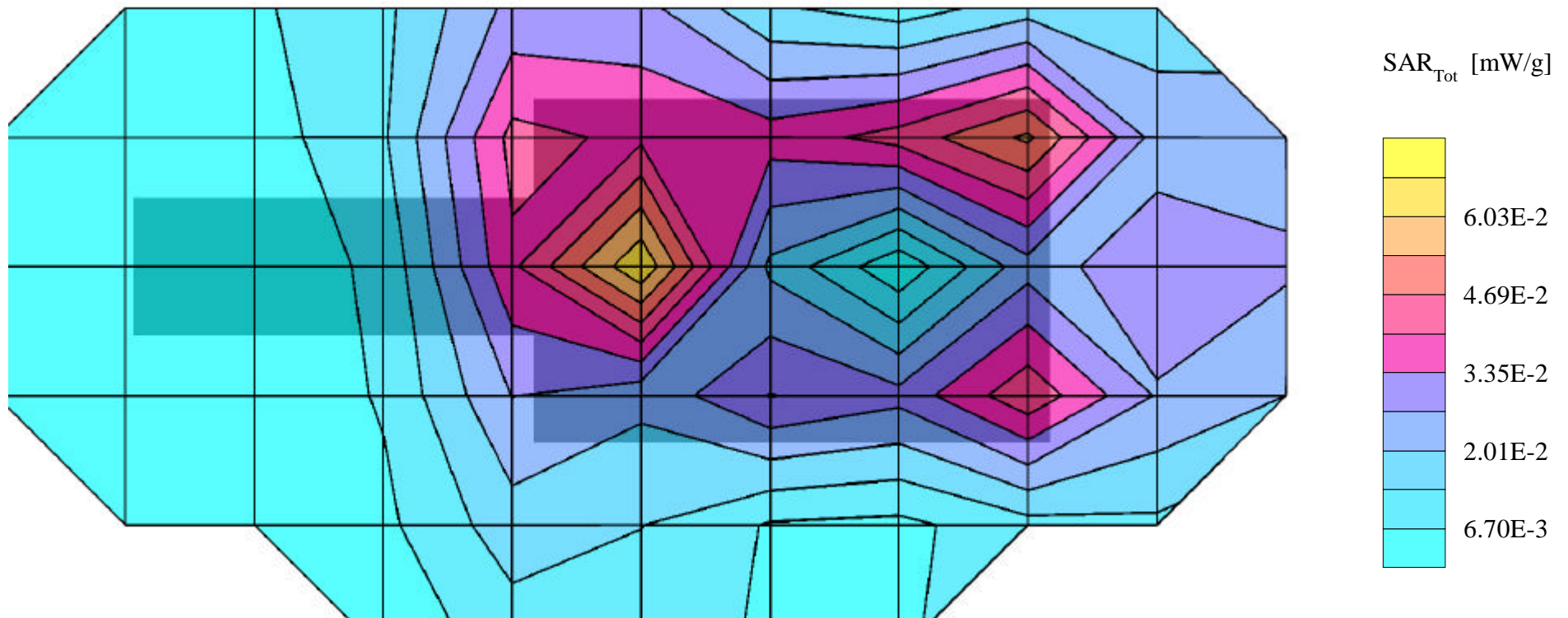
**SAR (1g): 0.0683 mW/g, SAR (10g): 0.0352 mW/g**

SYMBOL Asterix 3 Terminal w/ Integrated 11Mb DSSS radio card [FCC ID:H9PLA4121]

Model: CST3046; CW Mode, Mid Channel [2437MHz]; Standard Battery; Flat Phantom

EIRP Power = 21.31dBm [135mW]; Spacing = Touching rear panel (antenna side) of EUT to flat phantom

Test Date -- 11-20-2001





# SYMBOL FCC ID: H9PLA4121CST3046 -- 2.4GHz DSSS Body SAR

Generic Twin Phantom; Flat Section; Probe: ET3DV6 - SN1560 -- Probe Cal Date 20/02/01

Med. Parameters 2450 MHz Muscle:  $\sigma = 2.20$  mho/m  $\epsilon_r = 52.0$   $\rho = 1.00$  g/cm<sup>3</sup>; Antenna Position -- Out; Crest Factor 1.0

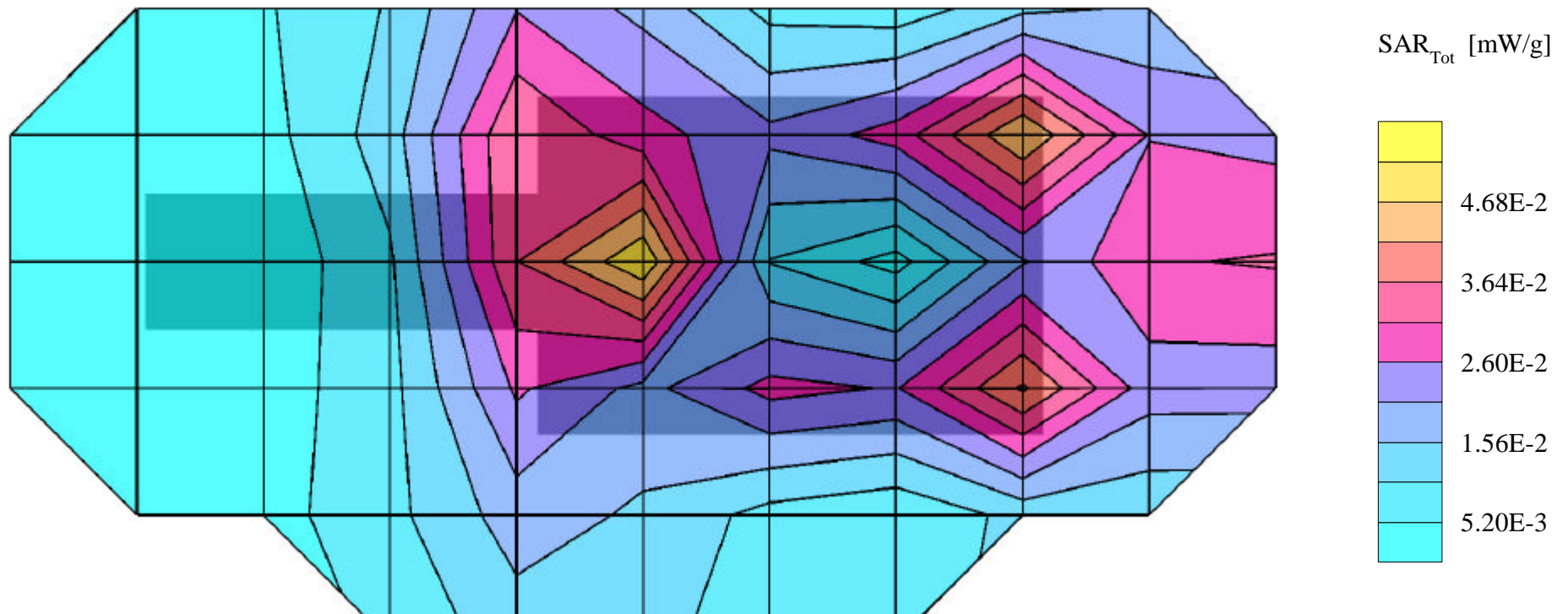
**SAR (1g): 0.0544 mW/g, SAR (10g): 0.0282 mW/g**

SYMBOL Asterix 3 Terminal w/ Integrated 11Mb DSSS radio card [FCC ID:H9PLA4121]

Model: CST3046; CW Mode, High Channel [2462MHz]; Standard Battery; Flat Phantom

EIRP Power = 21.31dBm [135mW]; Spacing = Touching rear panel (antenna side) of EUT to flat phantom

Test Date -- 11-20-2001



# SYMBOL FCC ID: H9PLA4121CST3046 -- 2.4GHz DSSS Hand SAR

Generic Twin Phantom; Flat Section; Probe: ET3DV6 - SN1560 -- Probe Cal Date 20/02/01

Med. Parameters 2450 MHz Muscle:  $\sigma = 2.20$  mho/m  $\epsilon_r = 52.0$   $\rho = 1.00$  g/cm<sup>3</sup>; Antenna Position -- Out; Crest Factor 1.0

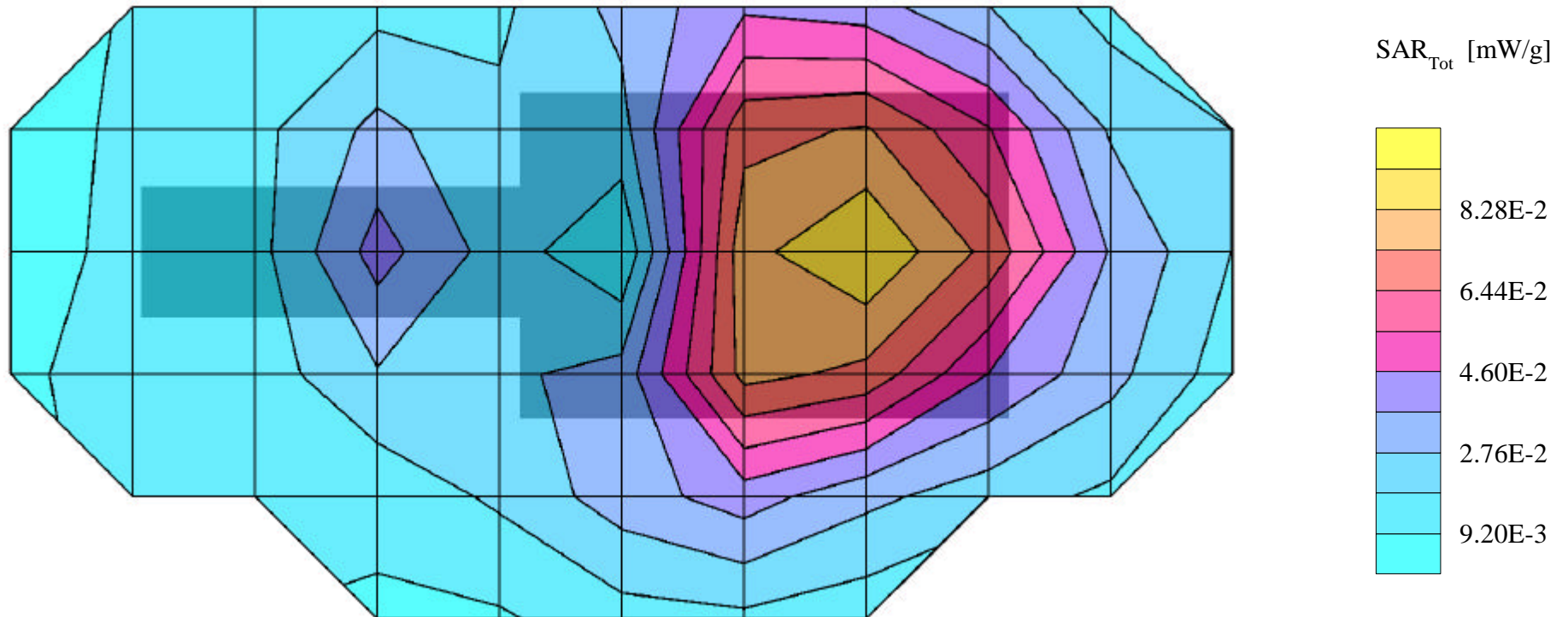
SAR (1g): 0.470 mW/g, **SAR (10g): 0.232 mW/g**

SYMBOL Asterix 3 Terminal w/ Integrated 11Mb DSSS radio card [FCC ID:H9PLA4121]

Model: CST3046; CW Mode, Low Channel [2412MHz]; Standard Battery; Flat Phantom

EIRP Power = 21.31dBm [135mW]; Spacing = Touching back panel (antenna side) of EUT to flat phantom, No BeltClip/No Holster

Test Date -- 11-20-2001



# SYMBOL FCC ID: H9PLA4121CST3046 -- 2.4GHz DSSS Hand SAR

Generic Twin Phantom; Flat Section; Probe: ET3DV6 - SN1560 -- Probe Cal Date 20/02/01

Med. Parameters 2450 MHz Muscle:  $\sigma = 2.20$  mho/m  $\epsilon_r = 52.0$   $\rho = 1.00$  g/cm<sup>3</sup>; Antenna Position -- Out; Crest Factor 1.0

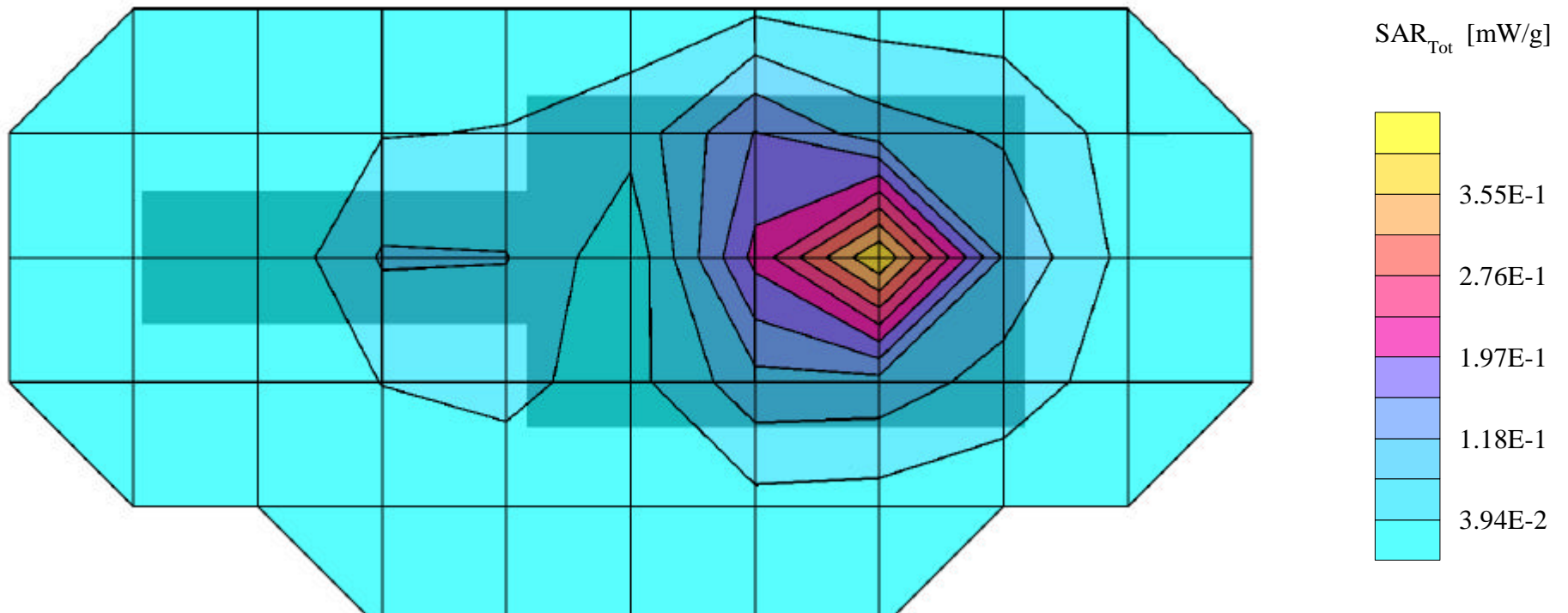
SAR (1g): 0.499 mW/g, **SAR (10g): 0.245 mW/g**

SYMBOL Asterix 3 Terminal w/ Integrated 11Mb DSSS radio card [FCC ID:H9PLA4121]

Model: CST3046; CW Mode, Mid Channel [2437MHz]; Standard Battery; Flat Phantom

EIRP Power = 21.31dBm [135mW]; Spacing = Touching back panel (antenna side) of EUT to flat phantom, No BeltClip/No Holster

Test Date -- 11-20-2001





# SYMBOL FCC ID: H9PLA4121CST3046 -- 2.4GHz DSSS Hand SAR

Generic Twin Phantom; Flat Section; Probe: ET3DV6 - SN1560 -- Probe Cal Date 20/02/01

Med. Parameters 2450 MHz Muscle:  $\sigma = 2.20$  mho/m  $\epsilon_r = 52.0$   $\rho = 1.00$  g/cm<sup>3</sup>; Antenna Position -- Out; Crest Factor 1.0

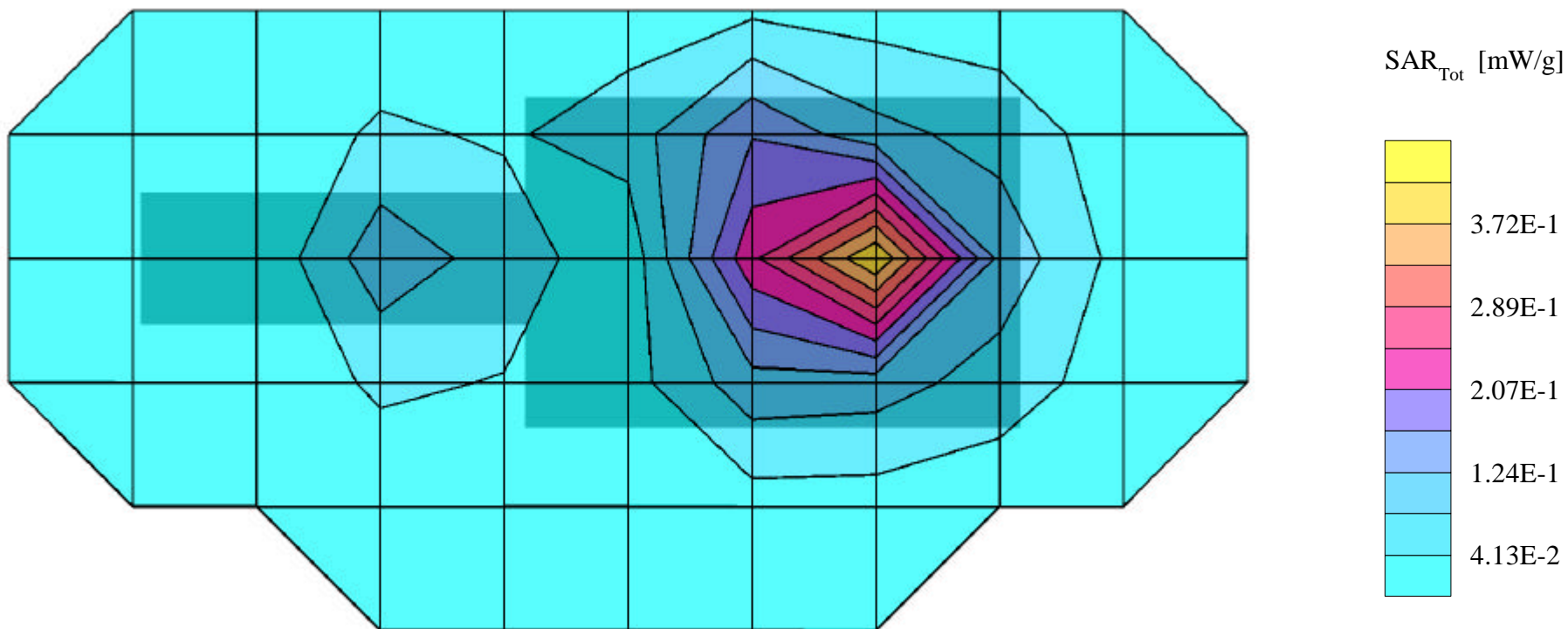
SAR (1g): 0.538 mW/g, **SAR (10g): 0.261 mW/g**

SYMBOL Asterix 3 Terminal w/ Integrated 11Mb DSSS radio card [FCC ID:H9PLA4121]

Model: CST3046; CW Mode, High Channel [2462MHz]; Standard Battery; Flat Phantom

EIRP Power = 21.31dBm [135mW]; Spacing = Touching back panel (antenna side) of EUT to flat phantom, No BeltClip/No Holster

Test Date -- 11-20-2001



# SYMBOL FCC ID: H9PLA4121CST3046 -- 2.4GHz DSSS Hand SAR

Generic Twin Phantom; Flat Section; Probe: ET3DV6 - SN1560 -- Probe Cal Date 20/02/01

Med. Parameters 2450 MHz Muscle:  $\sigma = 2.20$  mho/m  $\epsilon_r = 52.0$   $\rho = 1.00$  g/cm<sup>3</sup>; Antenna Position -- Out; Crest Factor 1.0

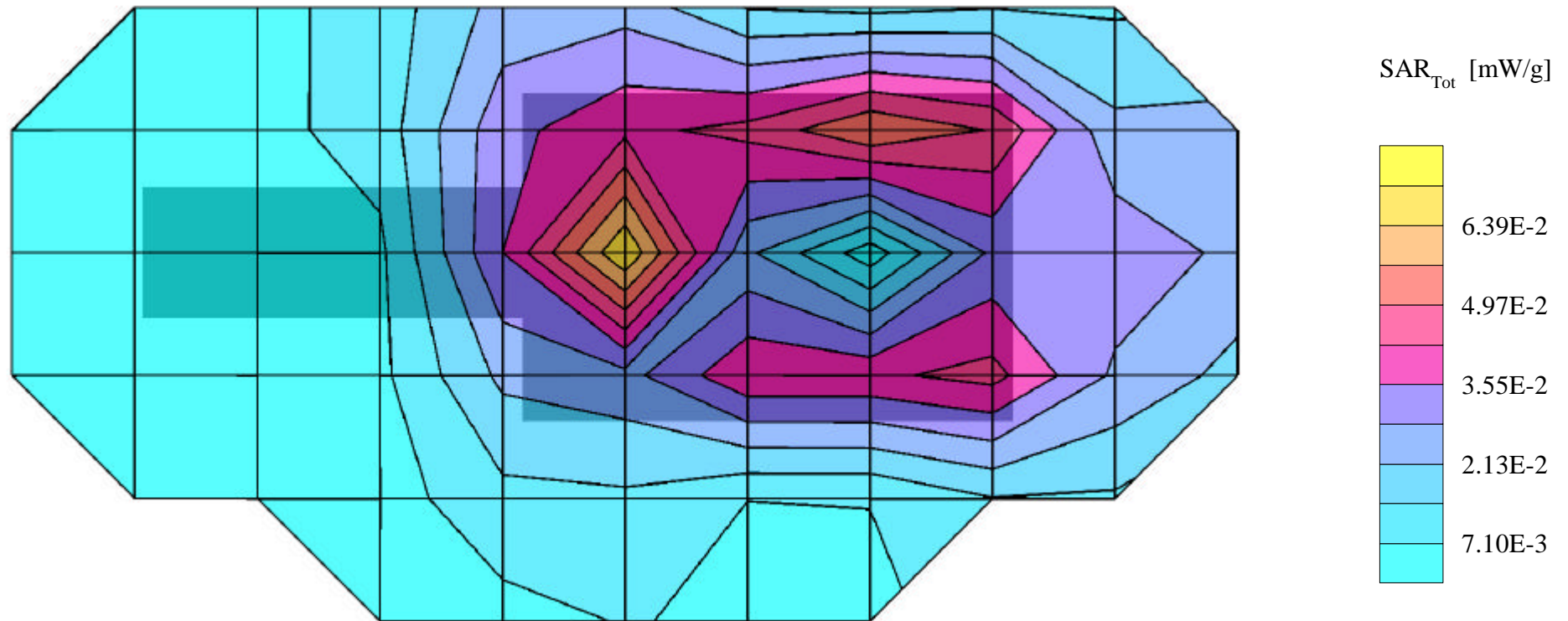
SAR (1g): 0.0731 mW/g, **SAR (10g): 0.0370 mW/g**

SYMBOL Asterix 3 Terminal w/ Integrated 11Mb DSSS radio card [FCC ID:H9PLA4121]

Model: CST3046; CW Mode, Low Channel [2412MHz]; Standard Battery; Flat Phantom

EIRP Power = 21.31dBm [135mW]; Spacing = Touching front panel (antenna flip-side) of EUT to flat phantom

Test Date -- 11-20-2001



# SYMBOL FCC ID: H9PLA4121CST3046 -- 2.4GHz DSSS Hand SAR

Generic Twin Phantom; Flat Section; Probe: ET3DV6 - SN1560 -- Probe Cal Date 20/02/01

Med. Parameters 2450 MHz Muscle:  $\sigma = 2.20$  mho/m  $\epsilon_r = 52.0$   $\rho = 1.00$  g/cm<sup>3</sup>; Antenna Position -- Out; Crest Factor 1.0

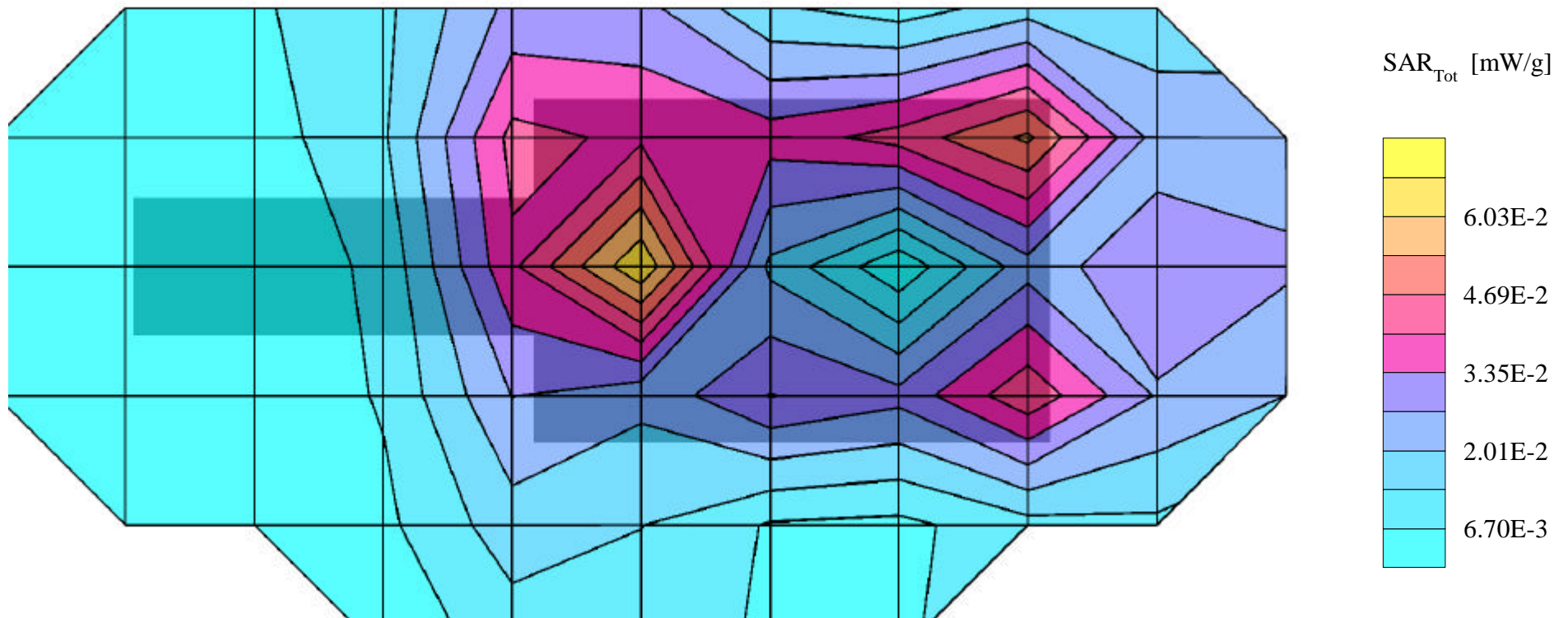
SAR (1g): 0.0683 mW/g, **SAR (10g): 0.0352 mW/g**

SYMBOL Asterix 3 Terminal w/ Integrated 11Mb DSSS radio card [FCC ID:H9PLA4121]

Model: CST3046; CW Mode, Mid Channel [2437MHz]; Standard Battery; Flat Phantom

EIRP Power = 21.31dBm [135mW]; Spacing = Touching rear panel (antenna side) of EUT to flat phantom

Test Date -- 11-20-2001



# SYMBOL FCC ID: H9PLA4121CST3046 -- 2.4GHz DSSS Hand SAR

Generic Twin Phantom; Flat Section; Probe: ET3DV6 - SN1560 -- Probe Cal Date 20/02/01

Med. Parameters 2450 MHz Muscle:  $\sigma = 2.20$  mho/m  $\epsilon_r = 52.0$   $\rho = 1.00$  g/cm<sup>3</sup>; Antenna Position -- Out; Crest Factor 1.0

SAR (1g): 0.0544 mW/g, **SAR (10g): 0.0282 mW/g**

SYMBOL Asterix 3 Terminal w/ Integrated 11Mb DSSS radio card [FCC ID:H9PLA4121]

Model: CST3046; CW Mode, High Channel [2462MHz]; Standard Battery; Flat Phantom

EIRP Power = 21.31dBm [135mW]; Spacing = Touching rear panel (antenna side) of EUT to flat phantom

Test Date -- 11-20-2001

