

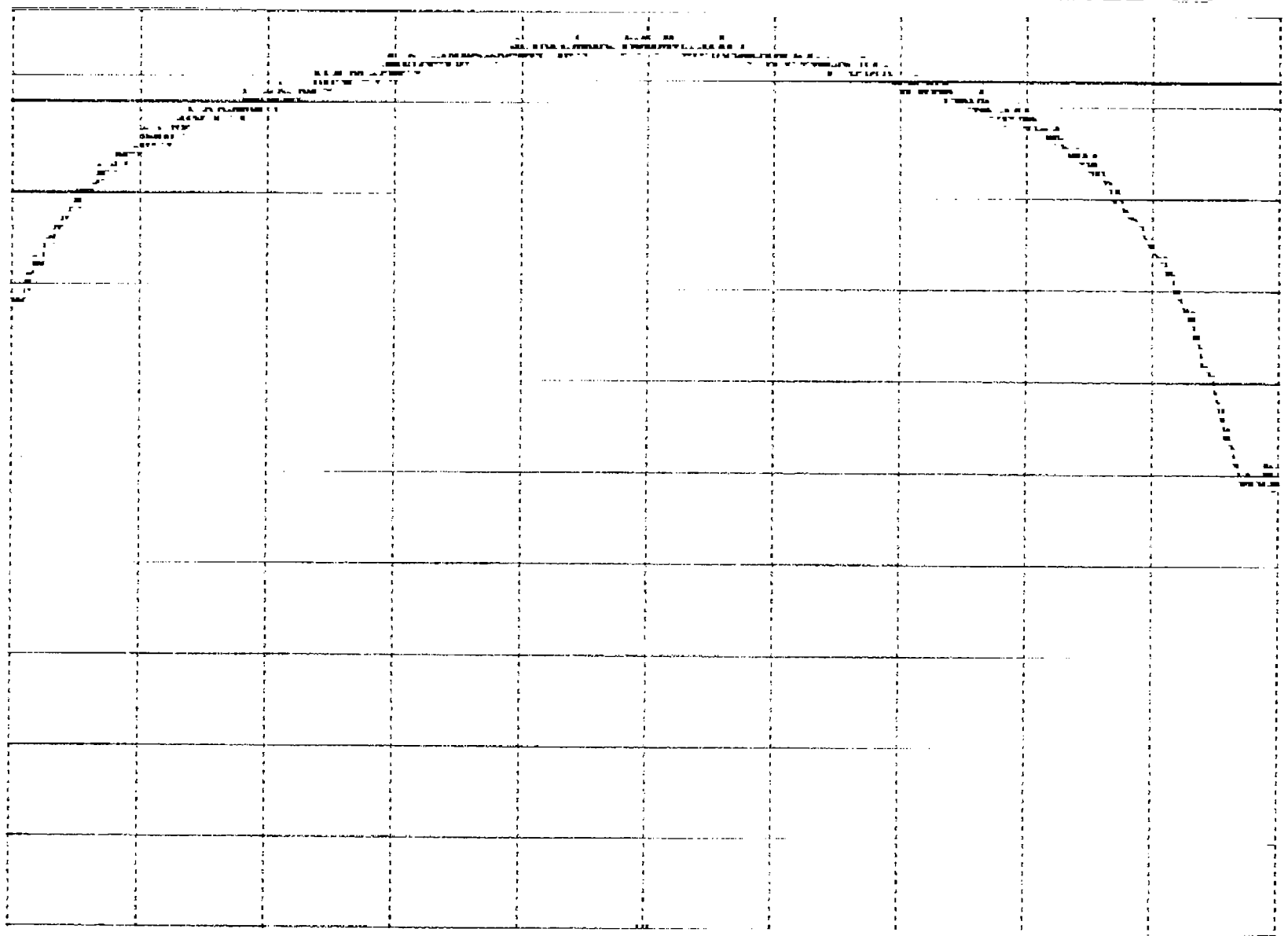
Plot 2.4

MKR Δ 11.58 MHz  
-0.50 dB

hp REF 10.0 dBm ATTEN 20 dB

10 dB

10 dB



CENT FREQ 1410.0000 MHz

REF 10.00 dBm

ATTEN 20.00 dB

MKR Δ 11.58 MHz  
-0.50 dB

SYMBOL 4121 MID-BAND

Plot 2.6

MKR  $\Delta$  9.76 MHz

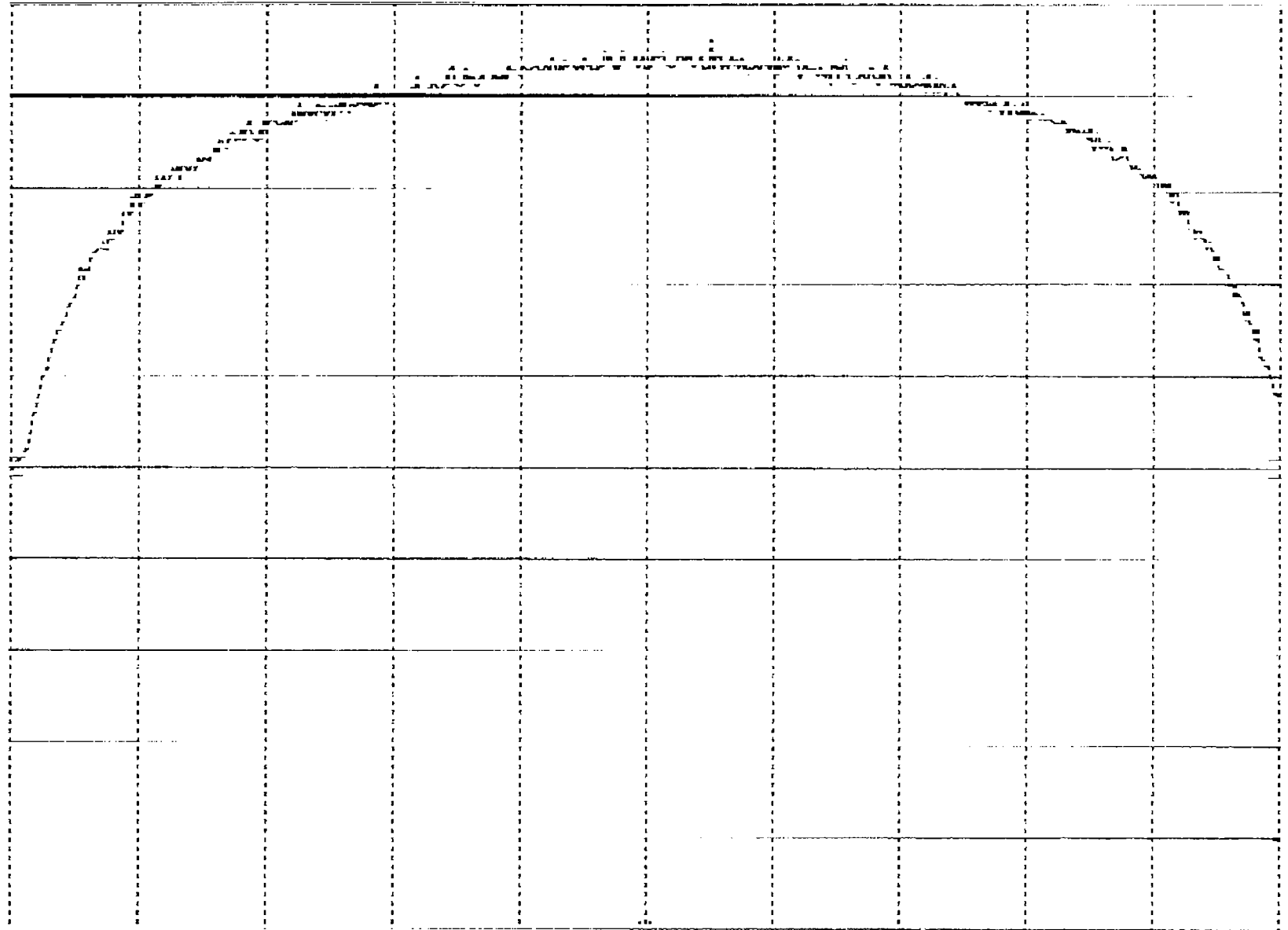
REF 10.0 dBm ATTN 20 dB

-0.30 dB

HP

10 dB/

dBm



CENTER 2.487 GHz

SPAN 20 MHz

RES BW 100 kHz

VBW 100 kHz

SWP 20.0 MHz

SYMBOL, 4121  
REF 10.0 dBm

ATTEN 20 dB

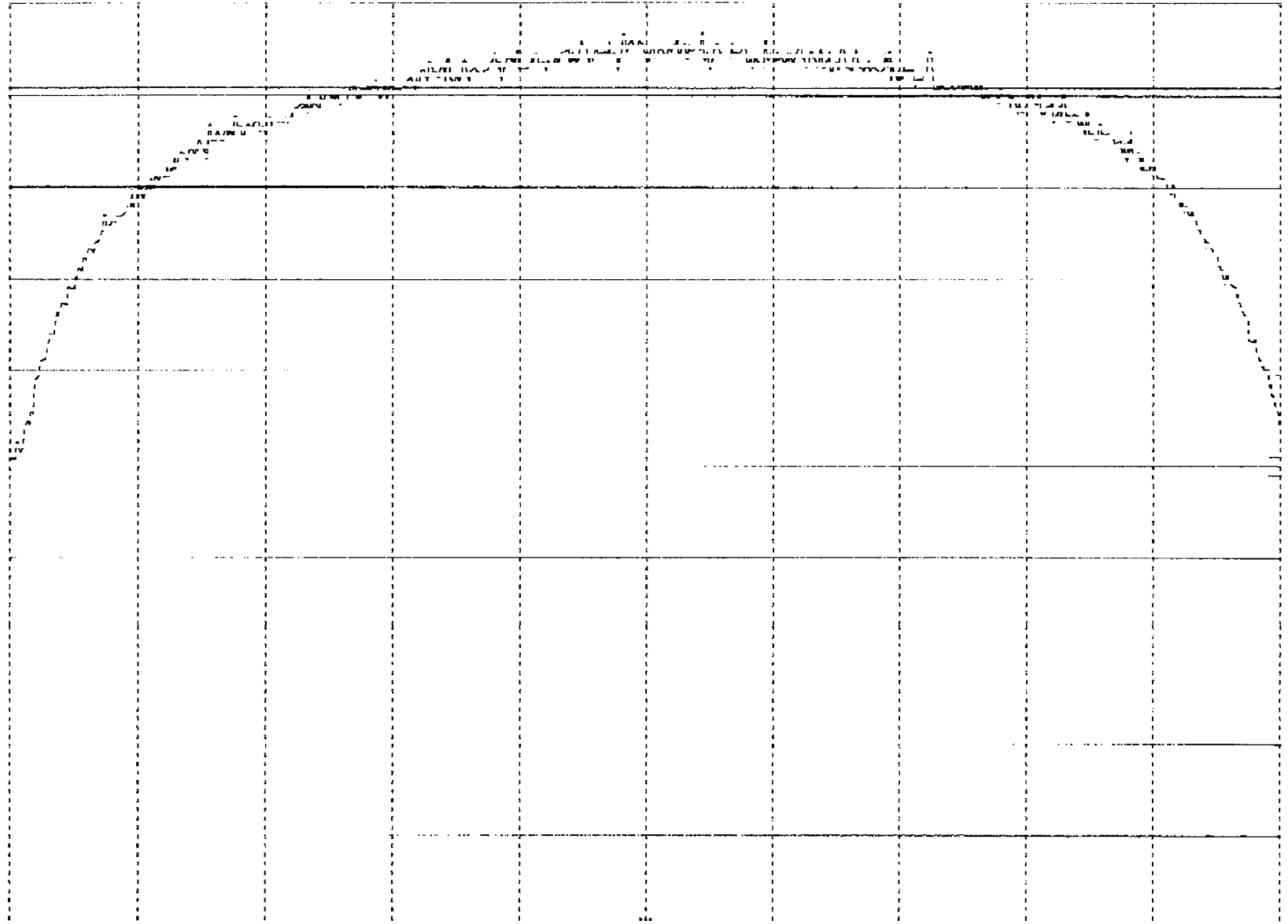
Plot 2.c

MKR Δ 12.00 MHz  
-0.90 dB

hp

10 dB

dB



CENTRE FREQ 100.000 MHz  
SPAN 200.0 MHz  
VIEW FREQ 100 MHz  
SWP 20.0 MHz

10 dB

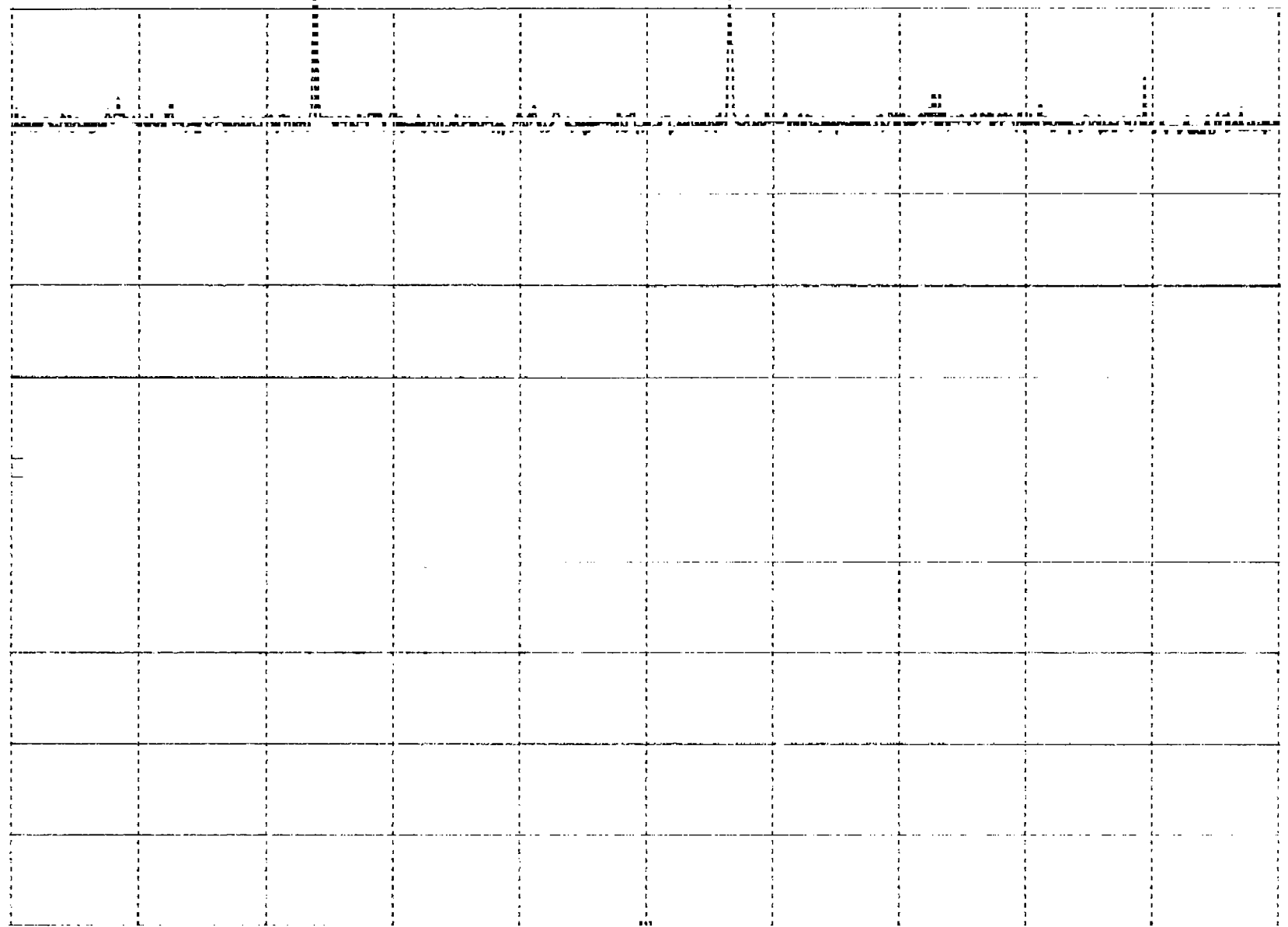
RFF 0.0 dBm

ATTEN 10 dB

*Plot 3.a*

MKR 2.411 022 GHz

1.90 dBm



CENTER 2.412 10 GHz  
REF BW 3 kHz

VBW 3 kHz

SPAN 2.10 MHz  
SWP 700 Hz

SYMBOL 4121 MID-BAND

*Plot 3.6*

MKR 2.437 887 GHz

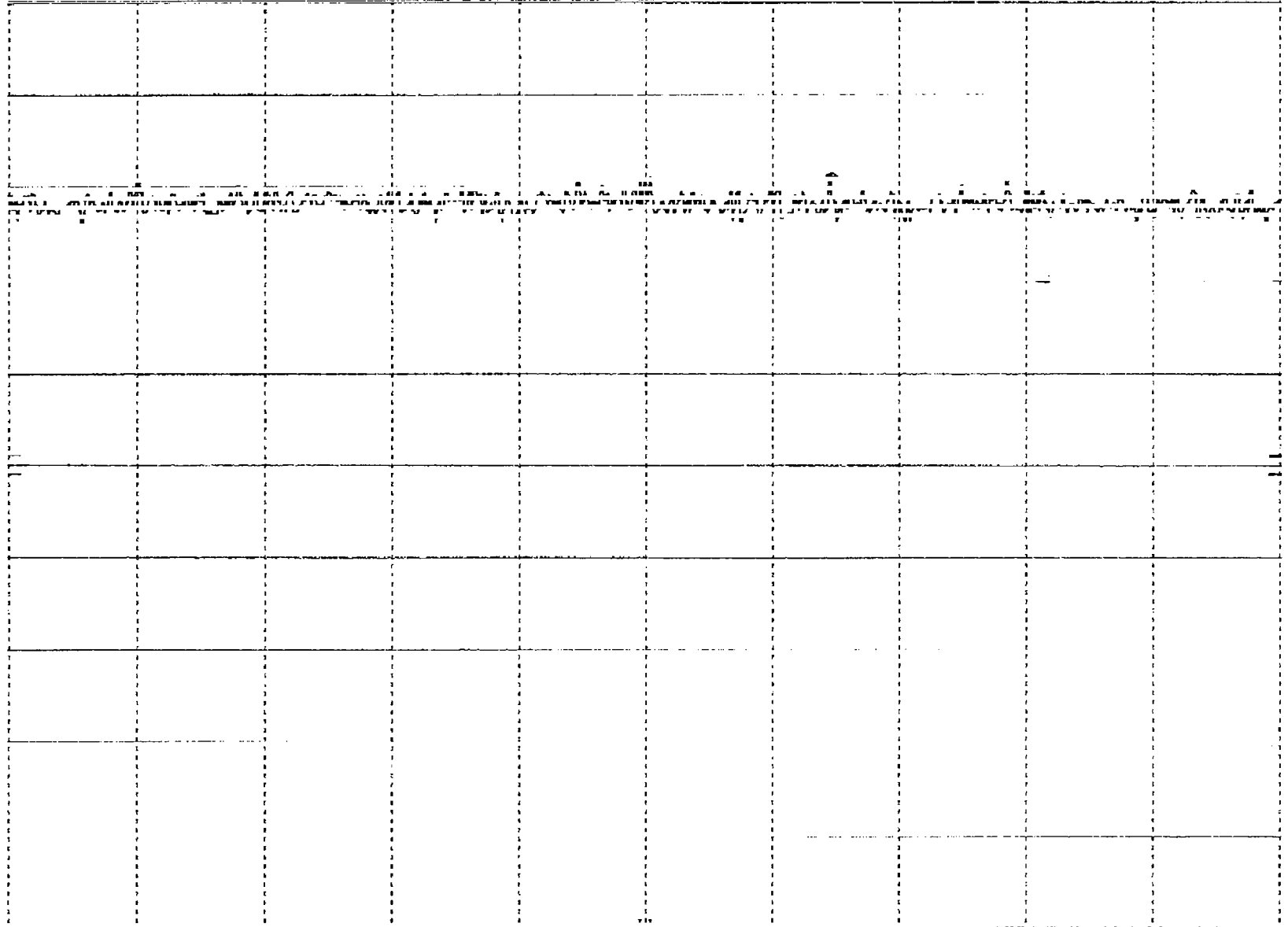
REF 10.0 dBm

ATTEN 20 dB

-6.80 dBm

*hp*

15 dB



CENTER 2.437887 GHz  
 SPAN 2.00 MHz  
 RES BW 700 kHz

VOL 0.000  
 ATT 20.000

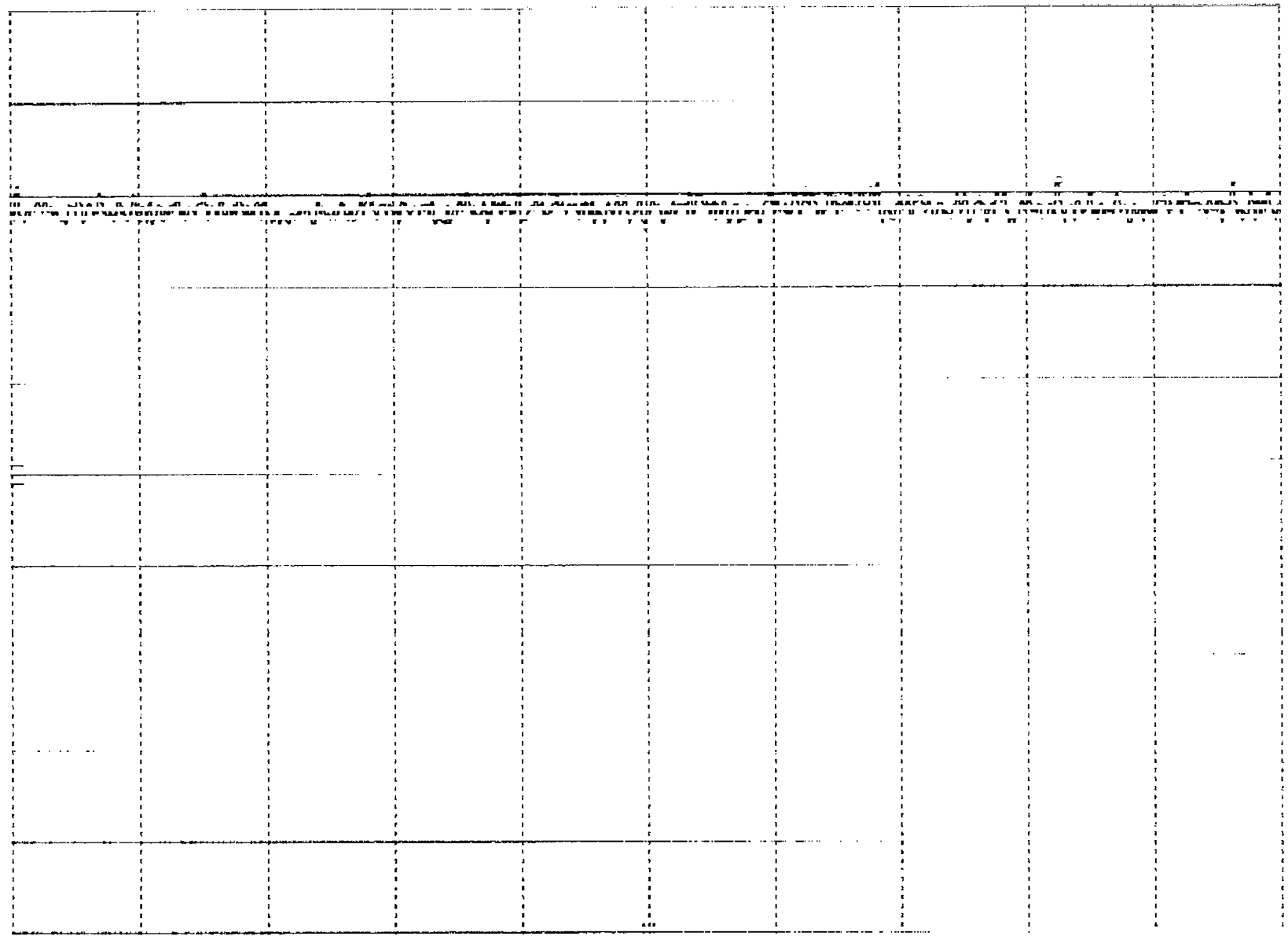
SPAN 2.00 MHz  
 RES BW 700 kHz

Plot 3.c

MKR 2.462 883 GHz  
-8.70 dBm

hp  
15 dB

REF 10.0 dBm ATTEN 20 dB



CENTERS 2.462 883 GHz  
RES BW 3 MHz

VIEW 0 MHz

SPAN 3.48 MHz  
0.000 0.000

SYMBOL 4121 LO-BAND

Plot 4.21

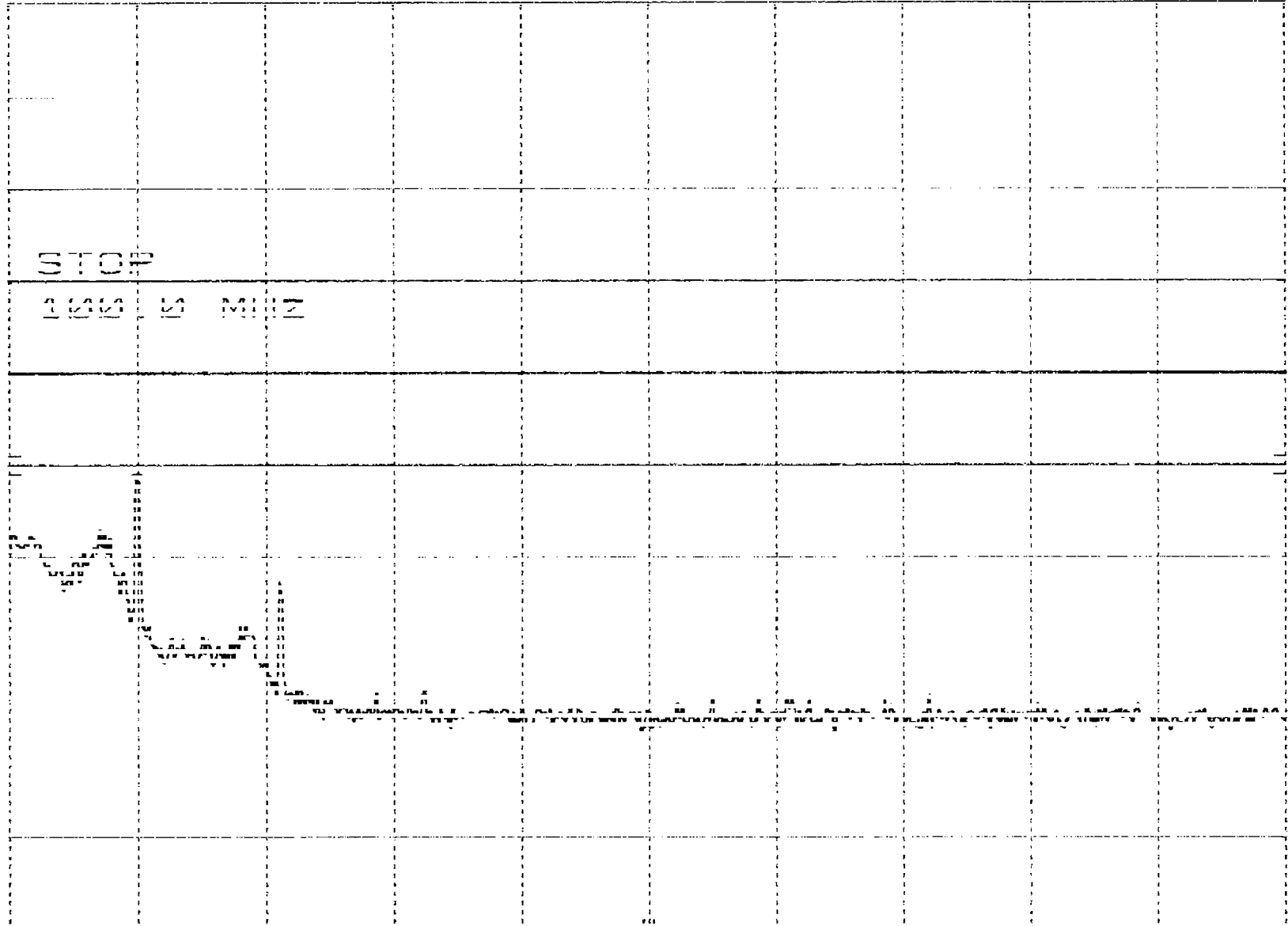
MKR 10.00 MHz

REF 10.0 dBm

ATTEN 20 dB

-41.20 dBm

hp  
10 dB



START 9.5 MHz

STOP 10.5 MHz

VBW 100 kHz

STOP 10.5 MHz

SPAN 10.0 MHz

SYMBOL 4121 LO-BAND

Plot 4.22

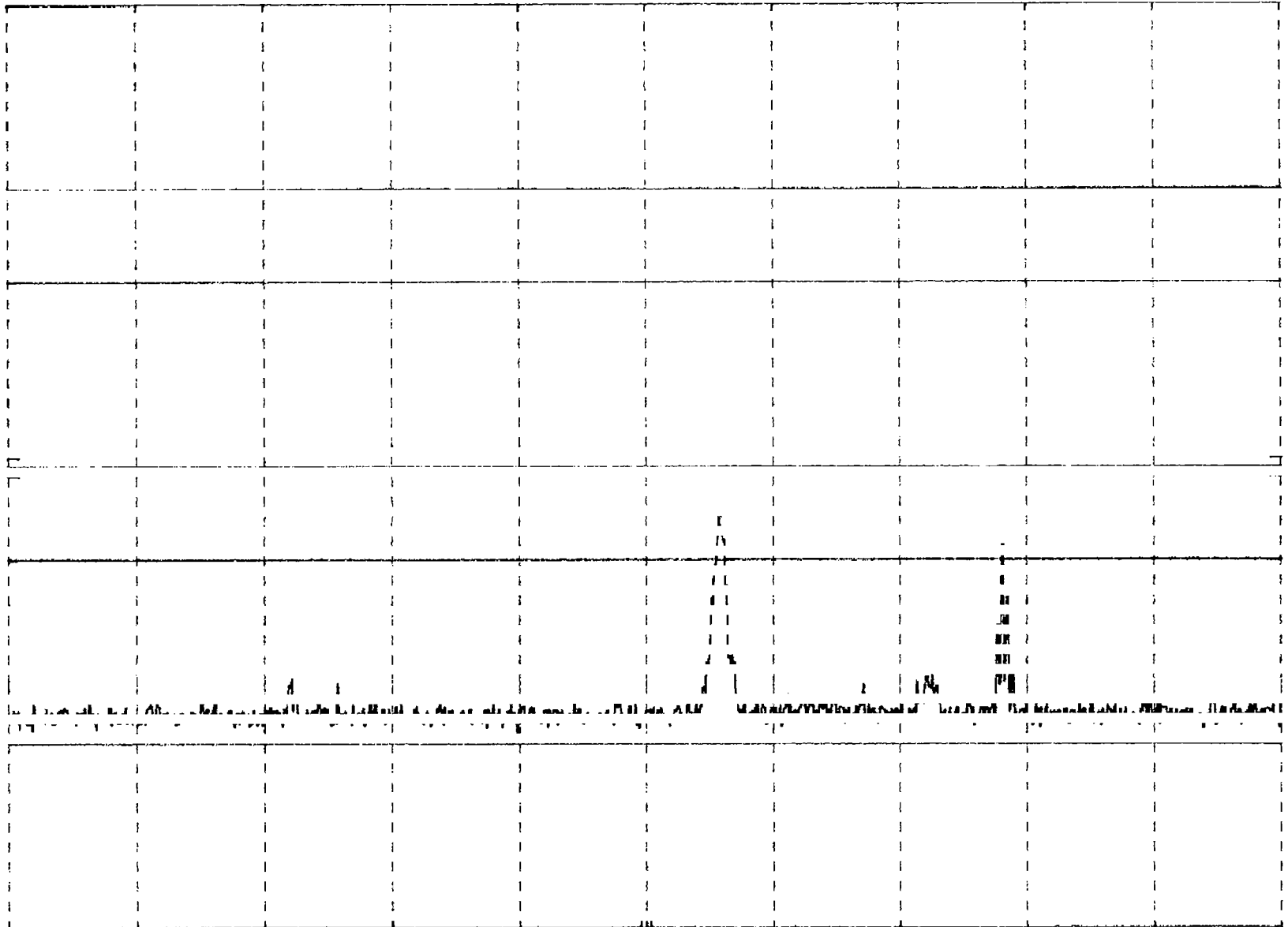
MKR 602.2 MHz

REF 10.0 dBm

ATTEN 20 dB

-45.00 dBm

hp  
10 dB



START 100 MHz

STOP 1.000 GHz

HTX BW 100 KHZ

VBW 100 KHZ

SWP 270 MSEC



SYMBOL 4121 LO BAND

*Plot 4.23*

MKR 1.809 GHz

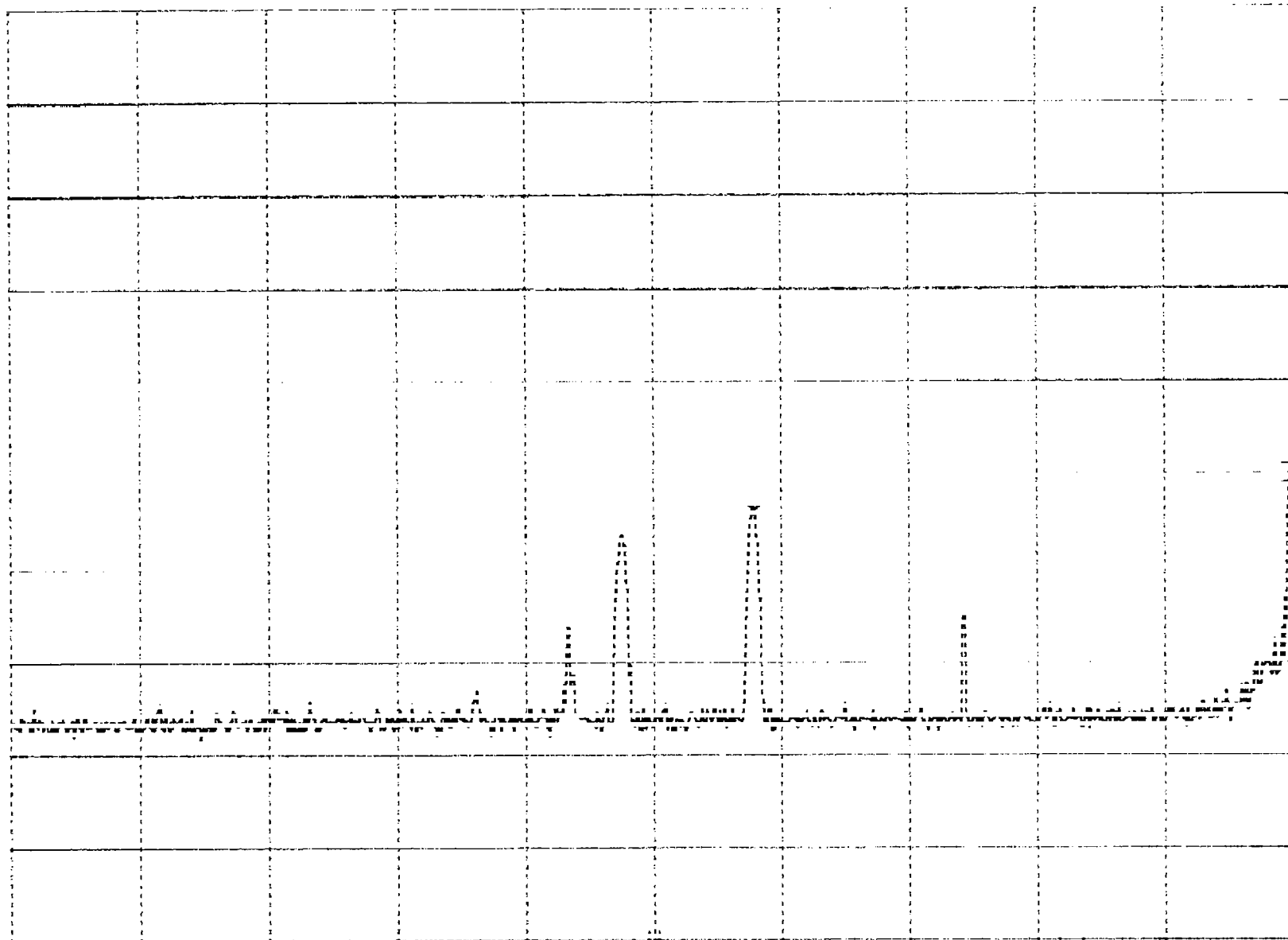
RFF 10.0 dBm

ATTEN 20 dB

-43.40 dBm

*hp*

15 dB/



START 1.80 GHz

STOP 1.81 GHz

RES BW 100 KHz

VBW 100 KHz

SWP 100 msec

SYMBOL 4121 LO-BAND

Plot 4 of 4

MKR 2.412 66 GHz

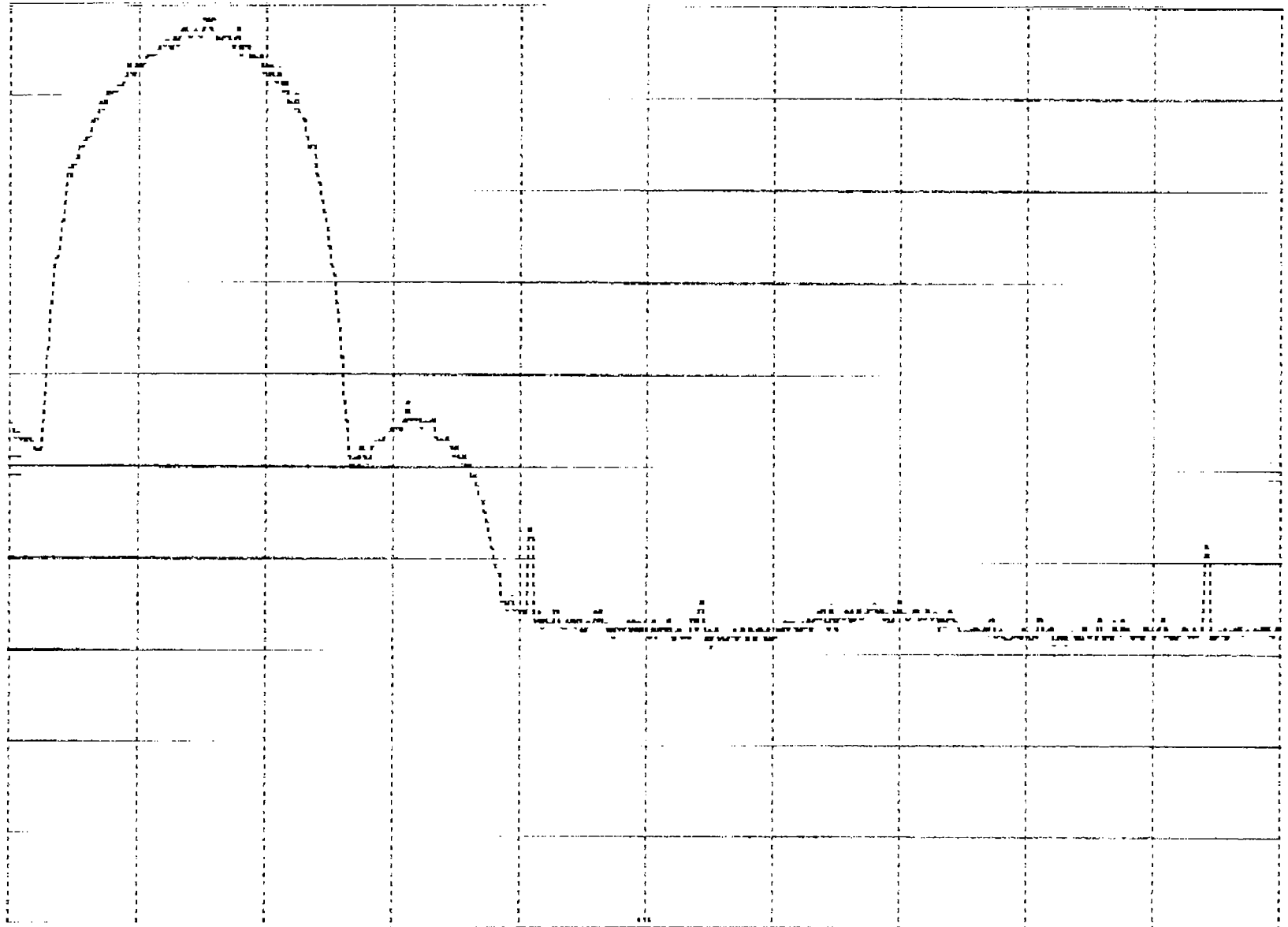
hp

RF 10.0 dBm

ATTEN 20 dB

8.40 dBm

10 dB/



START 2.412 66 GHz

STOP 2.463 0 GHz

BW 100 MHz

STOP 2.463 0 GHz

BW 10.1 MHz

SYMBOL 4121 LO-BAND

*Plot 4.05*

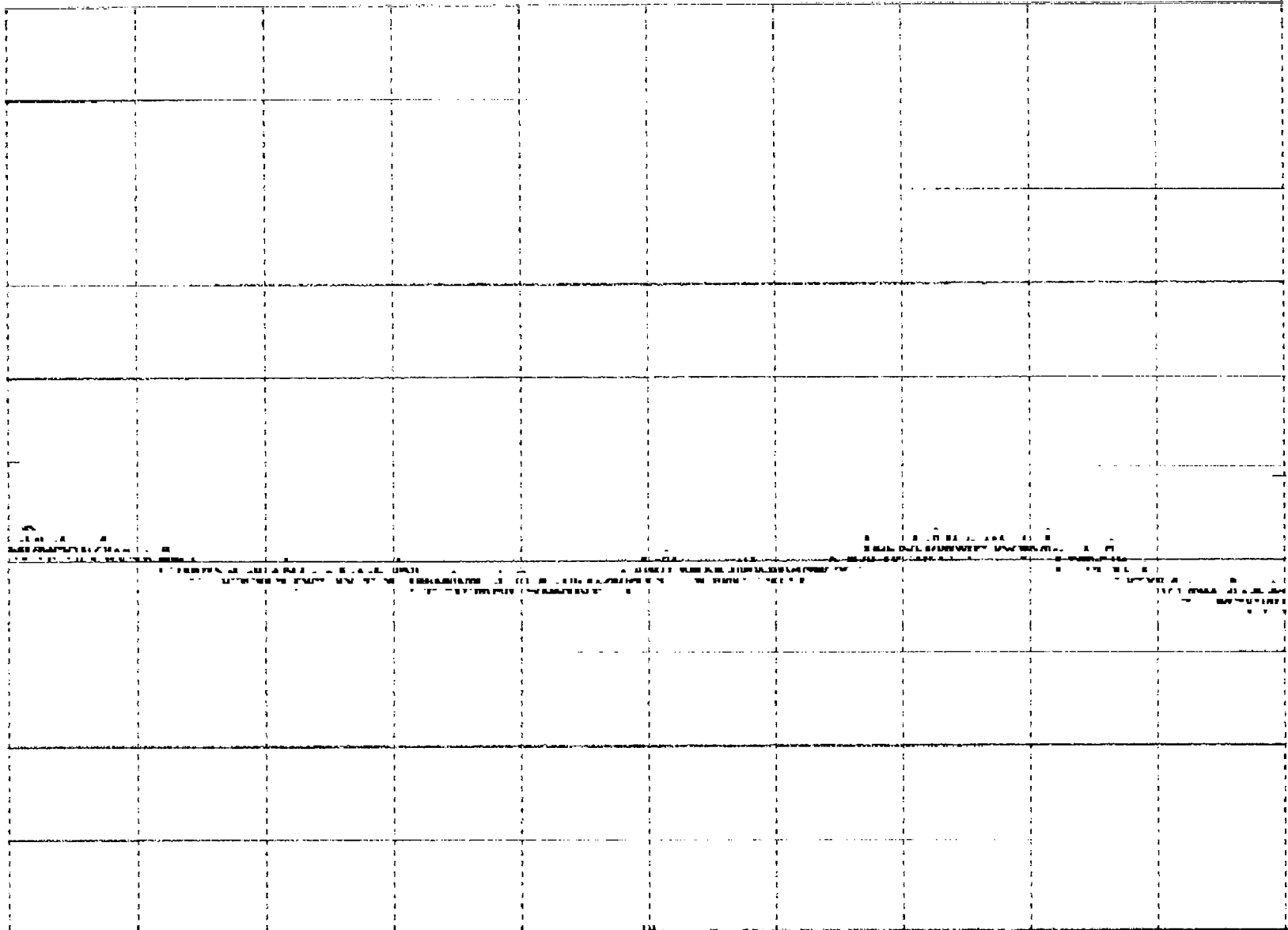
MKR 2.593 MHz

*hp*

REF 10.0 dBm ATTEN 20 dB

-46.30 dBm

10 dB



START 0 40 MHz

STOP 10.00 MHz

REF BW 100 kHz

VBW 100 kHz

SWP 20.0 mscc

SYMBOL 4121 LO-BAND

Plot 4.26

MKR 23.68 GHz

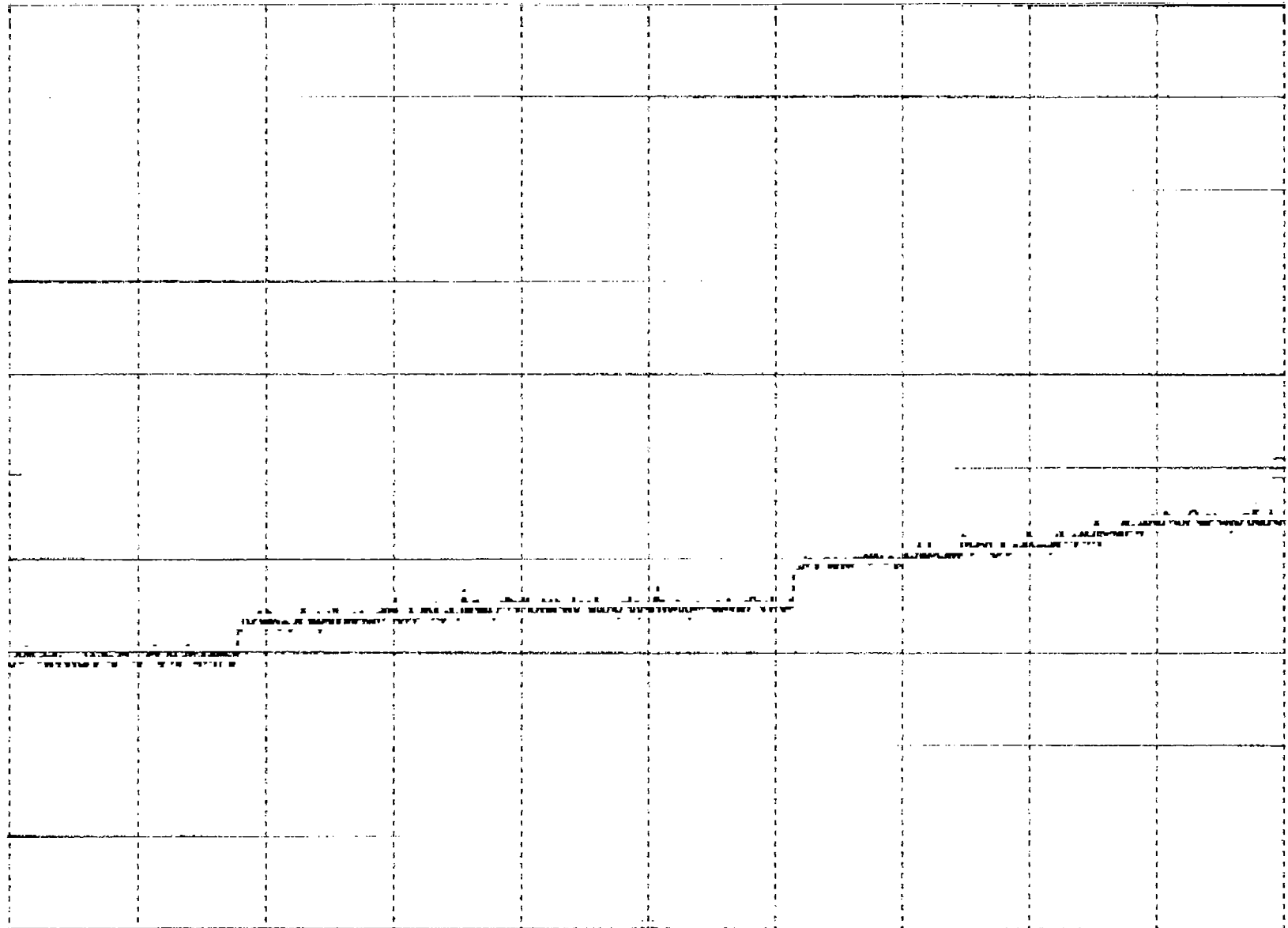
hp

REF 10.0 dBm

ATTEN 20 dB

-44.30 dBm

dB



HP

4121

LO-BAND

VIEW 100 KHZ

CUR 23.68 GHz

SWP 4.00 SEC

SYMBOL 4121 MID-BAND

Plot 4. b1

MKR 11.00 MHz

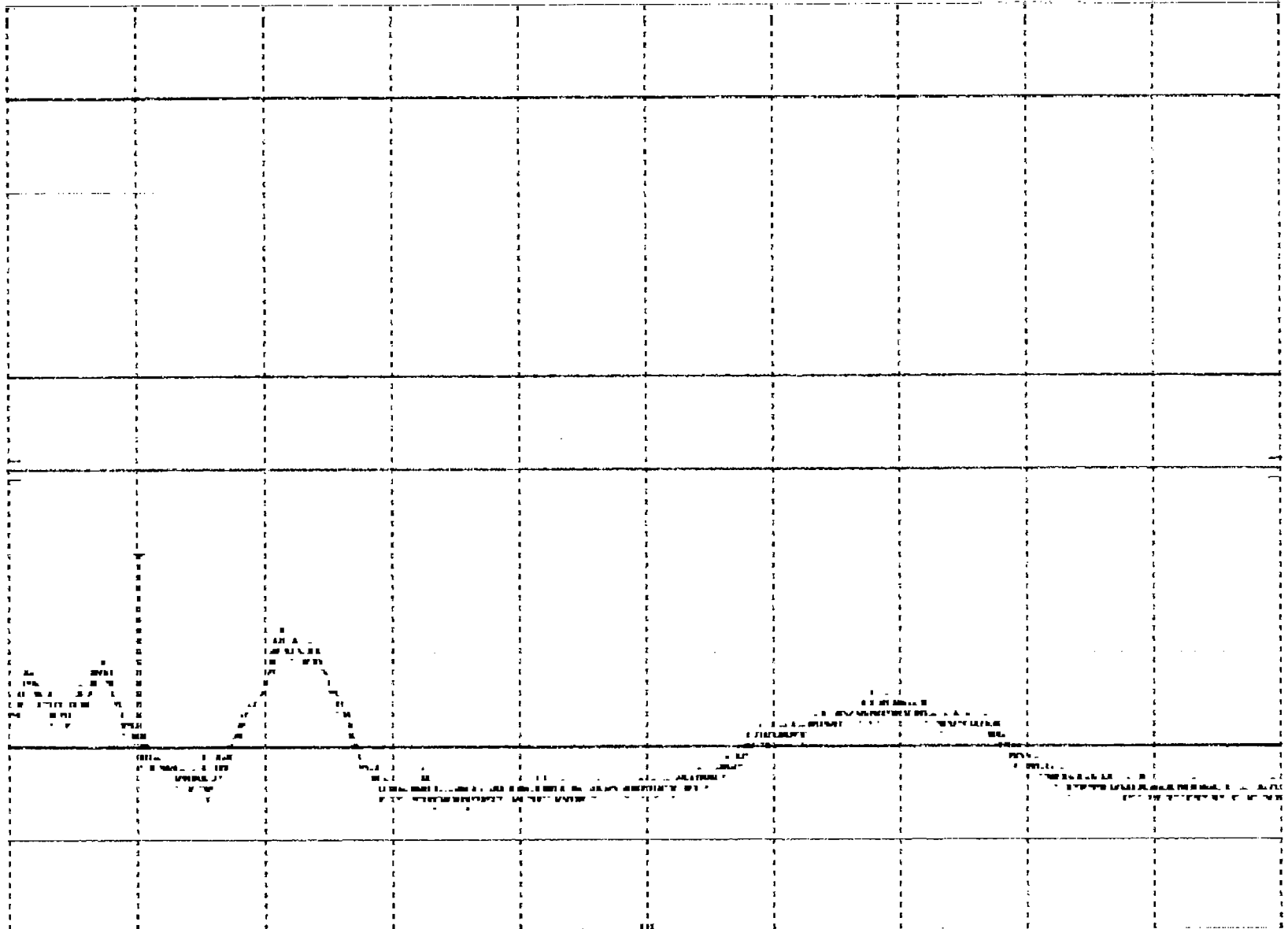
hp

REF 10.0 dBm

ATTEN 20 dB

-48.90 dBm

10 dB



START 10.0 MHz

RES BW 30 kHz

VBW 30 kHz

STOP 100.0 MHz

SWP 207 dBm

SYMBOL 4121 MILLMAN

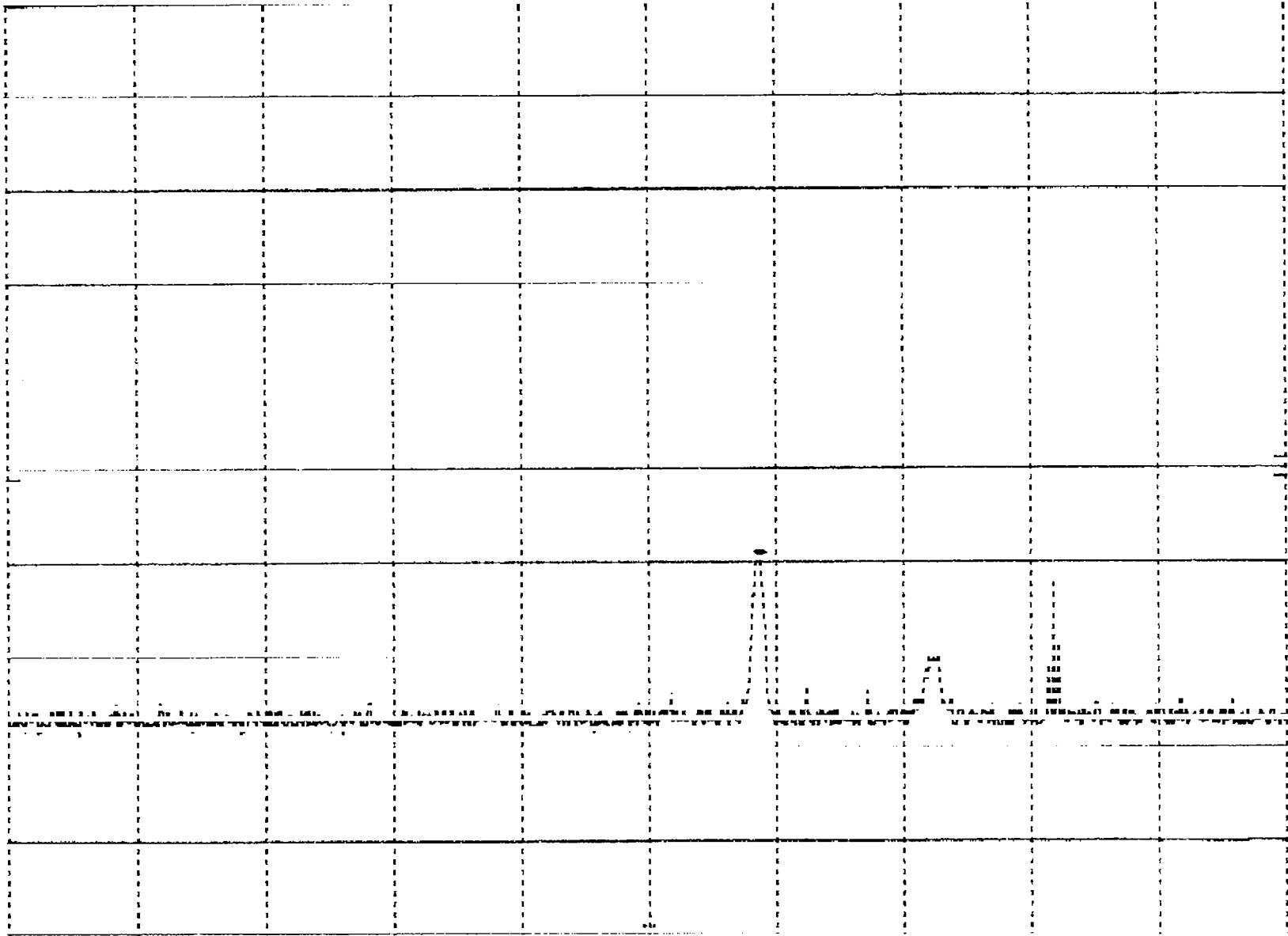
1100 1.2 10

MARK 020.5 MRZ

DEF 10.0 DEF ALLEN 20 00

-40 20 000

10 10 10



(START LEVEL)

1000 1000

DEF 10.0 DEF

MARK 020.5 MRZ

1100 1.2 10

SYMBOL 4121 MID-BAND

Plot 4. b 3

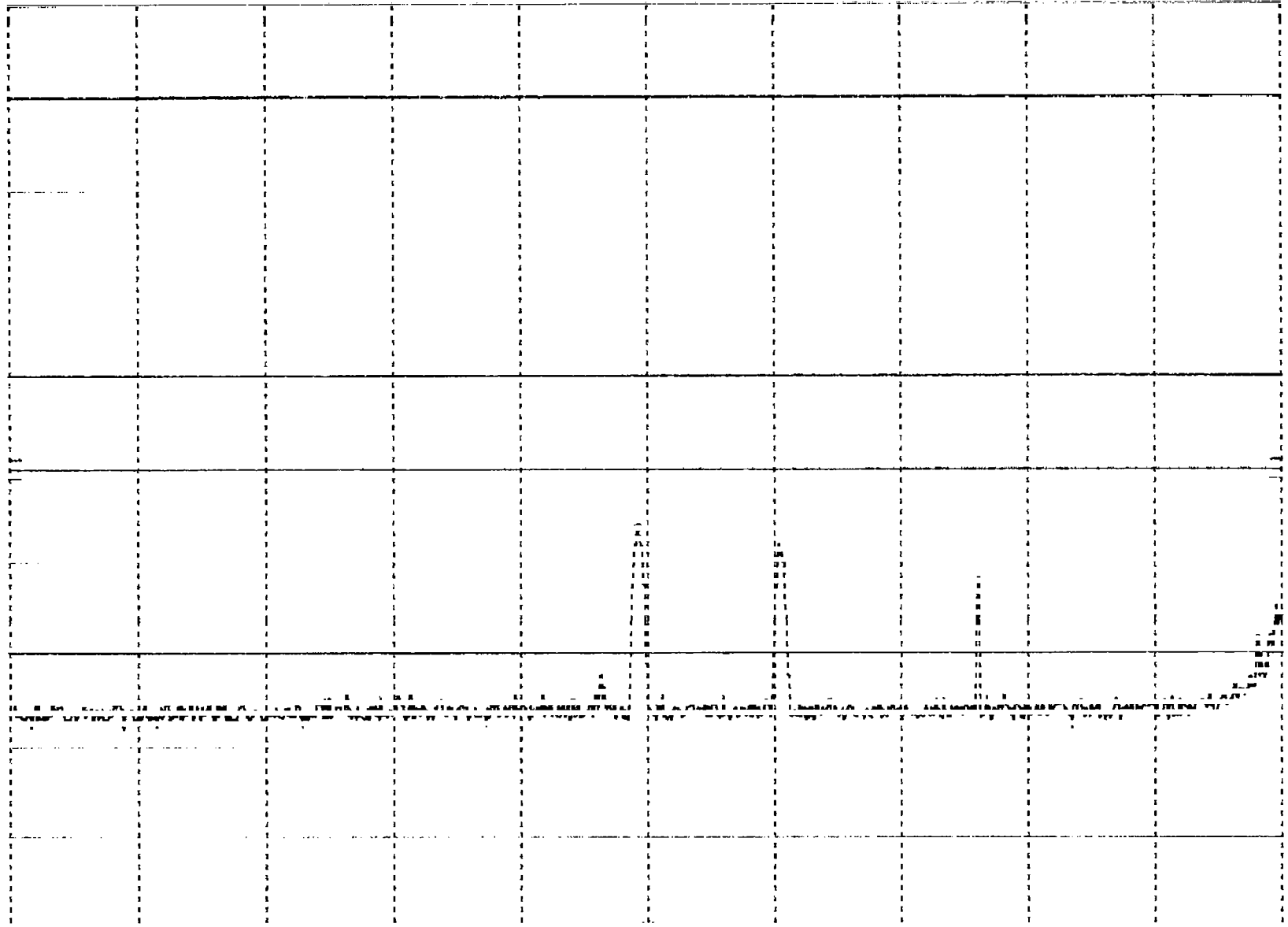
MKR 1.689 GHz

HP REF 10.0 dBm

ATTEN 20 dB

-46.40 dBm

10 dB/



START 1.689 GHz

STOP 1.700 GHz

FREQ BW 100 kHz

VBW 100 kHz

SWP 400 3000

SYMMBOL 4121 MID-BAND

*Plot 4.54*

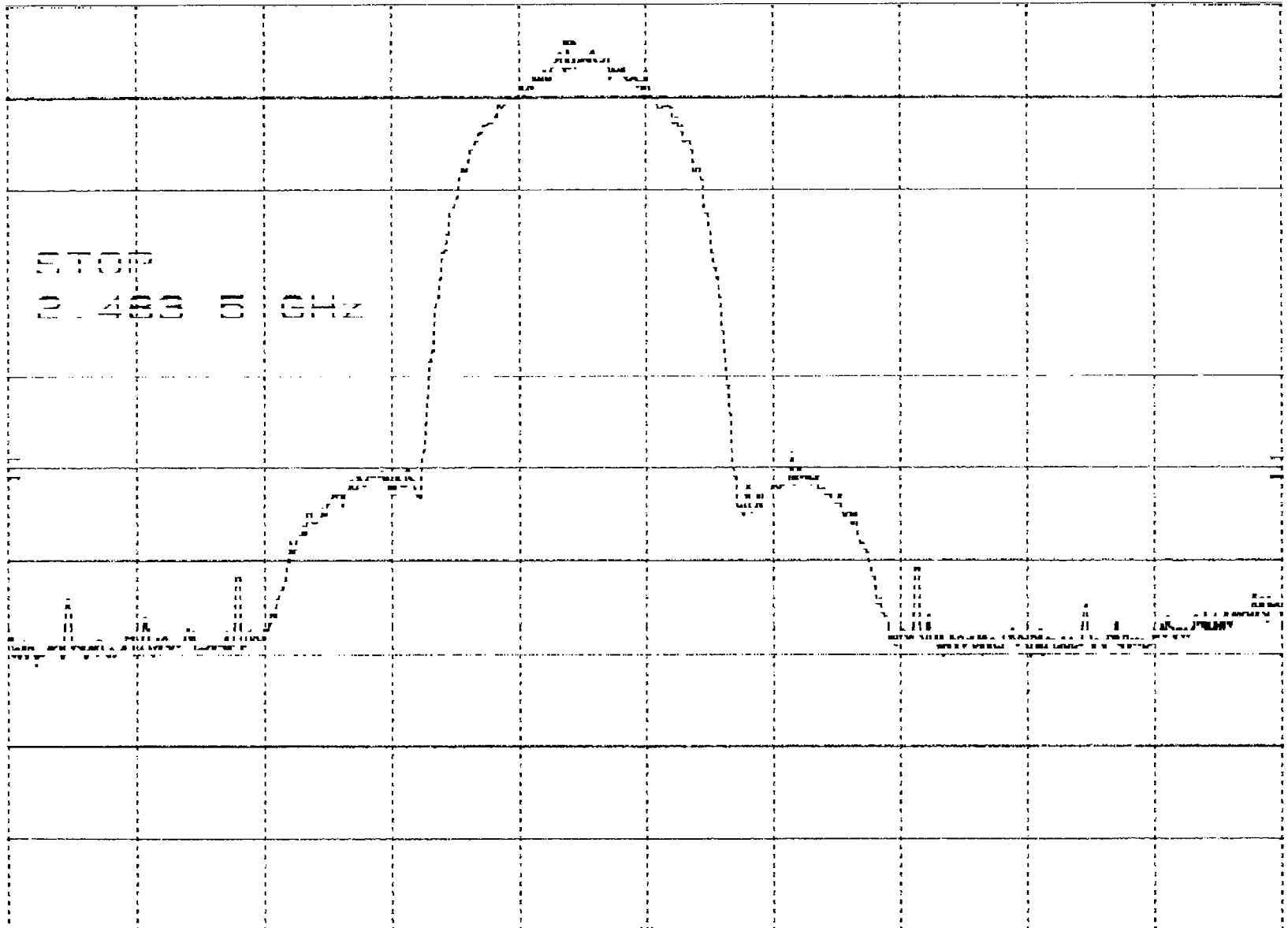
MKR 2.436 66 GHz

REF 10.0 dBm

ATTEN 20 dB

5.90 dBm

*hp*  
15 dB



START 2.400 0 GHz

FREQ BW 100 KHZ

VBW 100 KHZ

STOP 2.436 6 GHz

SPAN 15.1 MHz



SYMBOL 4121 MID-BAND

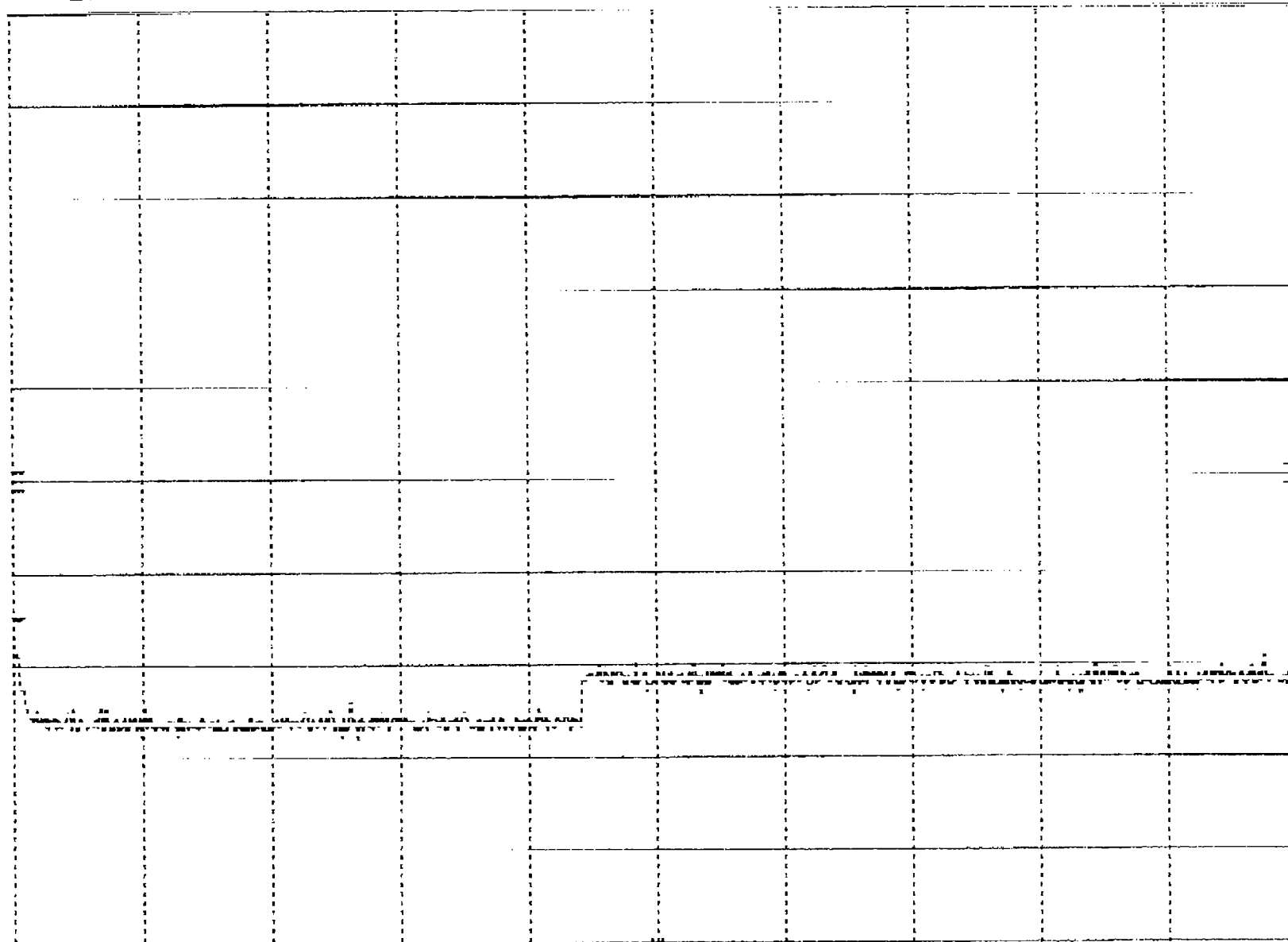
Plot 4.65

MKA 2.400 GHz

REF 10.0 dBm ATTEN 20 dB

-54.60 dBm

10 dB/



START 2.40 GHz

RES BW 100 kHz

VBW 100 kHz

STOP 2.50 GHz

SWP 7.25 dB

SYMBOL 4121 MID-BAND

Plot 0.6

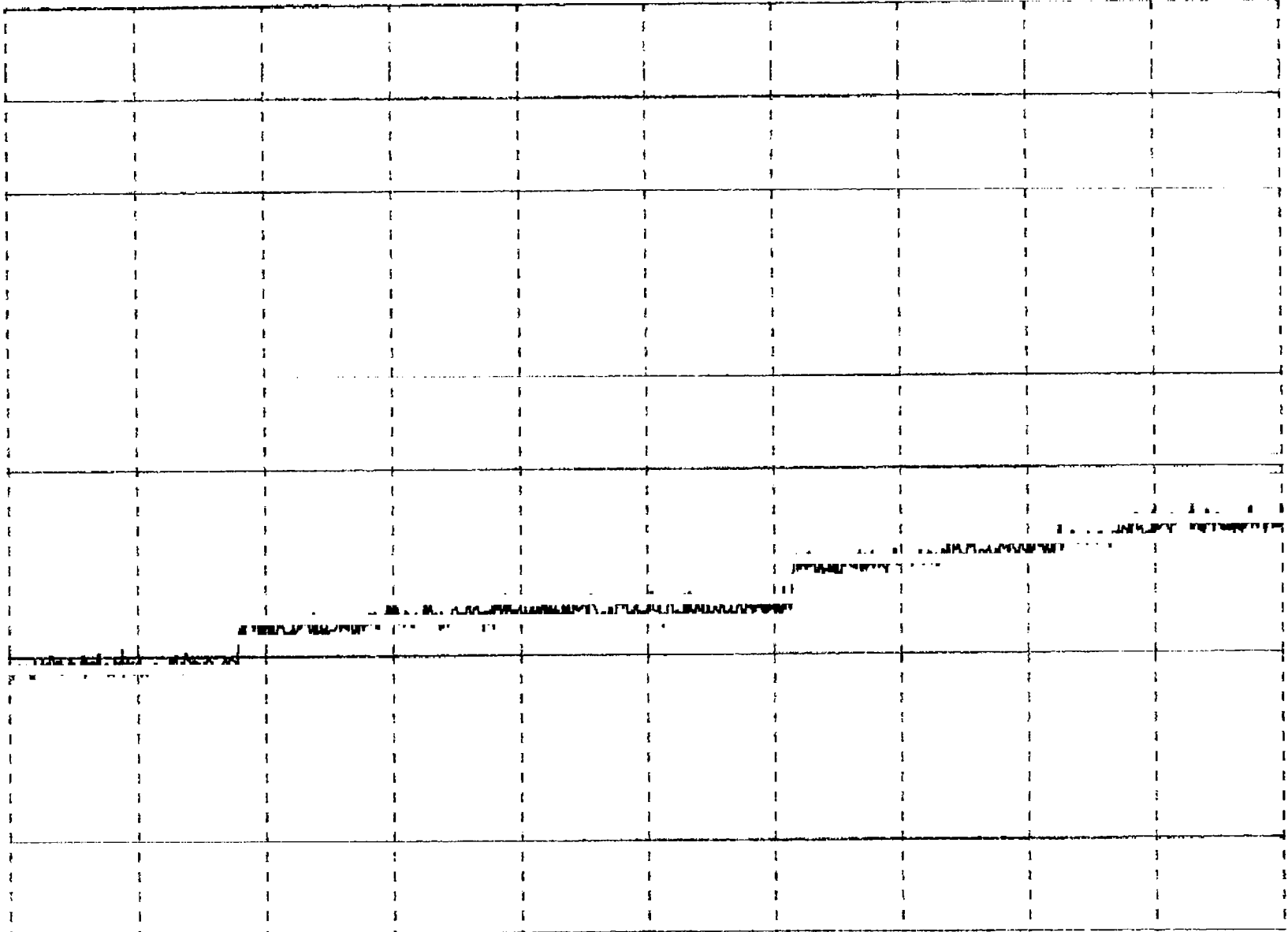
MARK 25.02 GHz

10

REF 10.0 dBm ATTEN 20 dB

40.75 dBm

10 20.7



START 10.0 GHz

STOP 24.0 GHz

RES BW 100 kHz

VBW 100 kHz

SF 4.00 GHz

CYMBRI 2124 H-KANDI

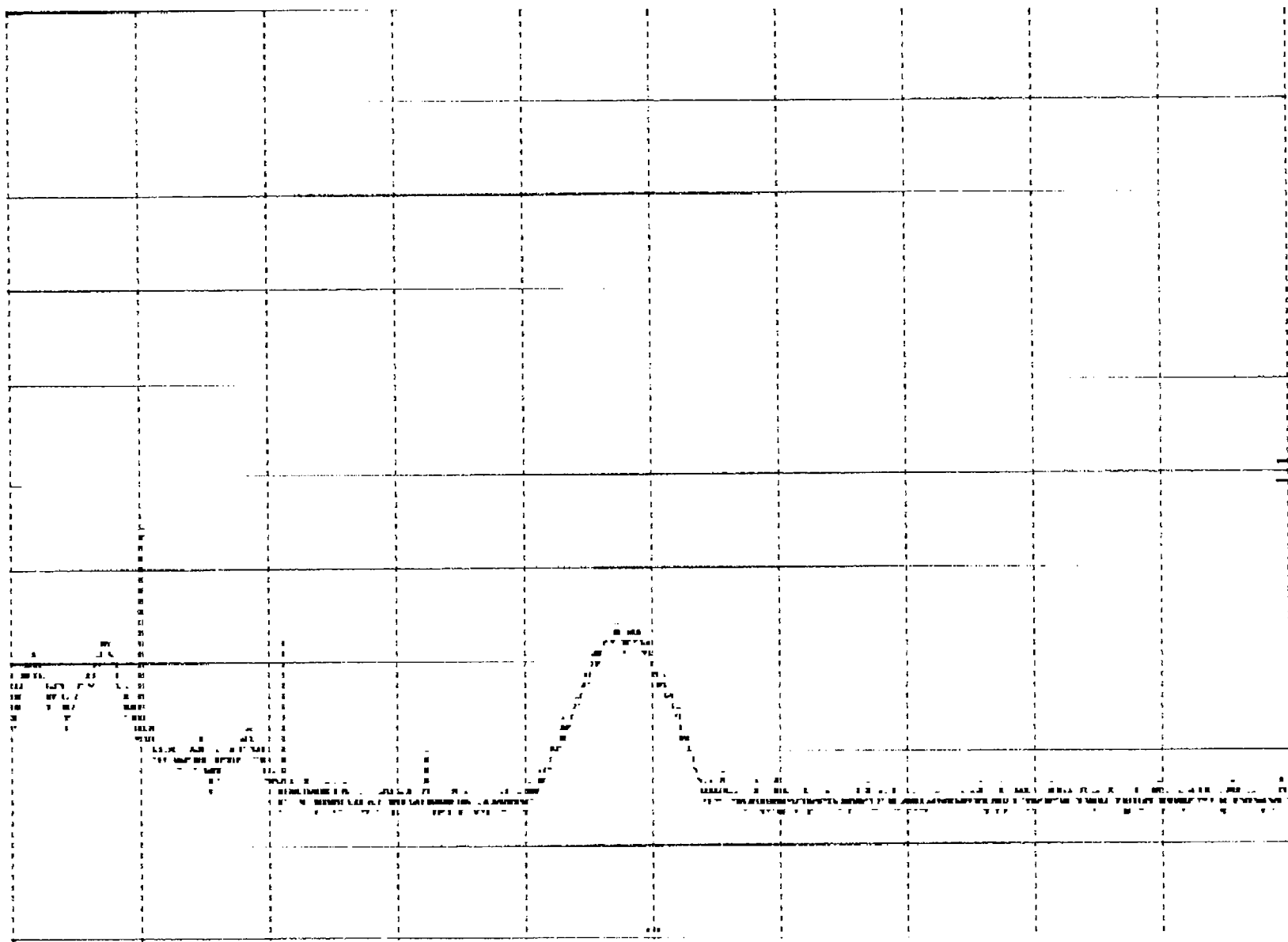
PLT 1.01

MNR 11.00 M12

REF 10.0 DBM ALLEN 21A 28

40 400 DBM

100  
100



010011 10 15 M12

100 200 300 400

VIEW 100 200

9100 100 50 M12

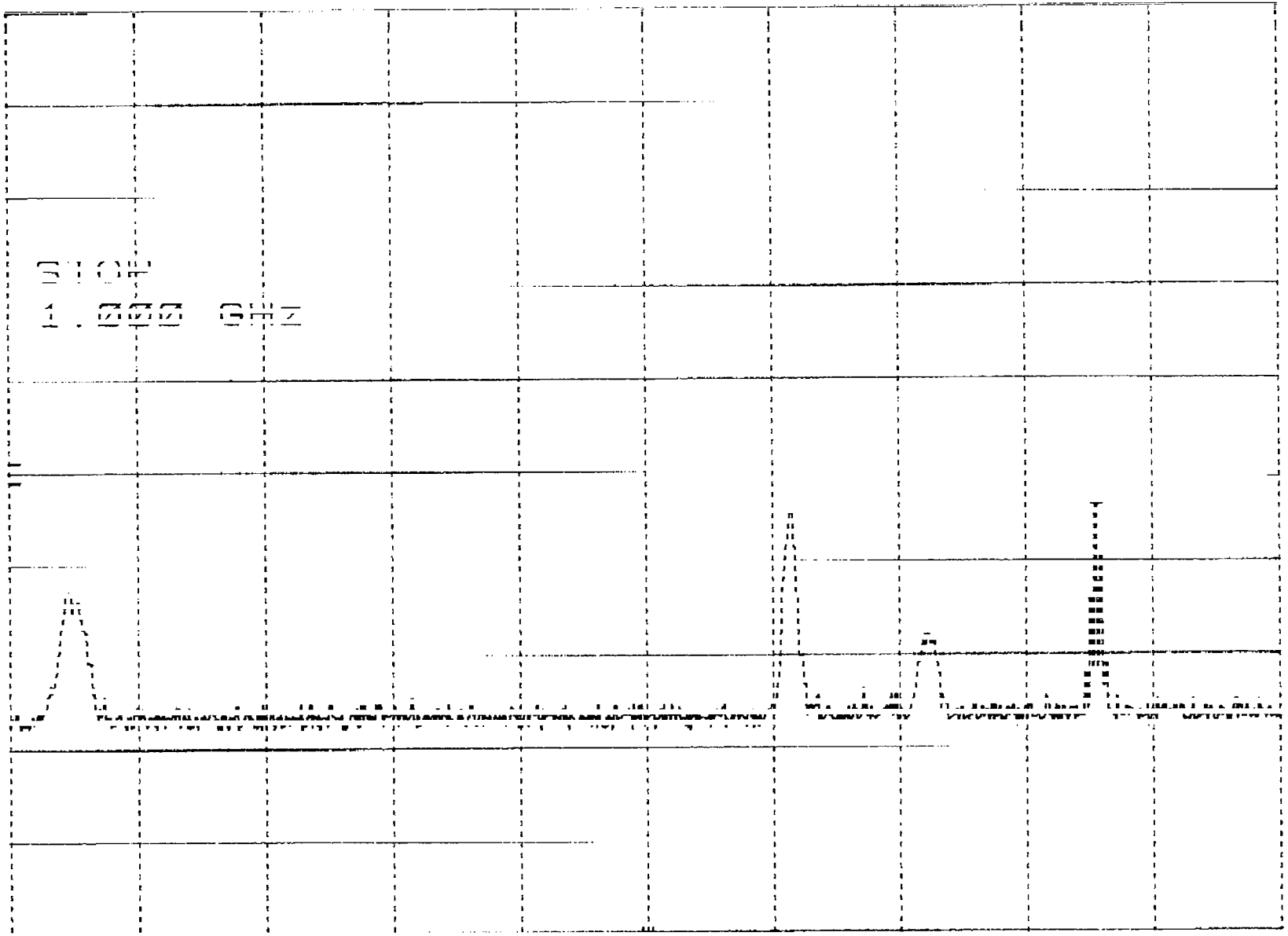
100 200 300

SYMBOL. 4121 HI-BAND  
REF 10.0 dBm ATTEN 20 dB

Plot 4.c 2

MKR 869.5 MHz  
-43.70 dBm

hp  
15 dB



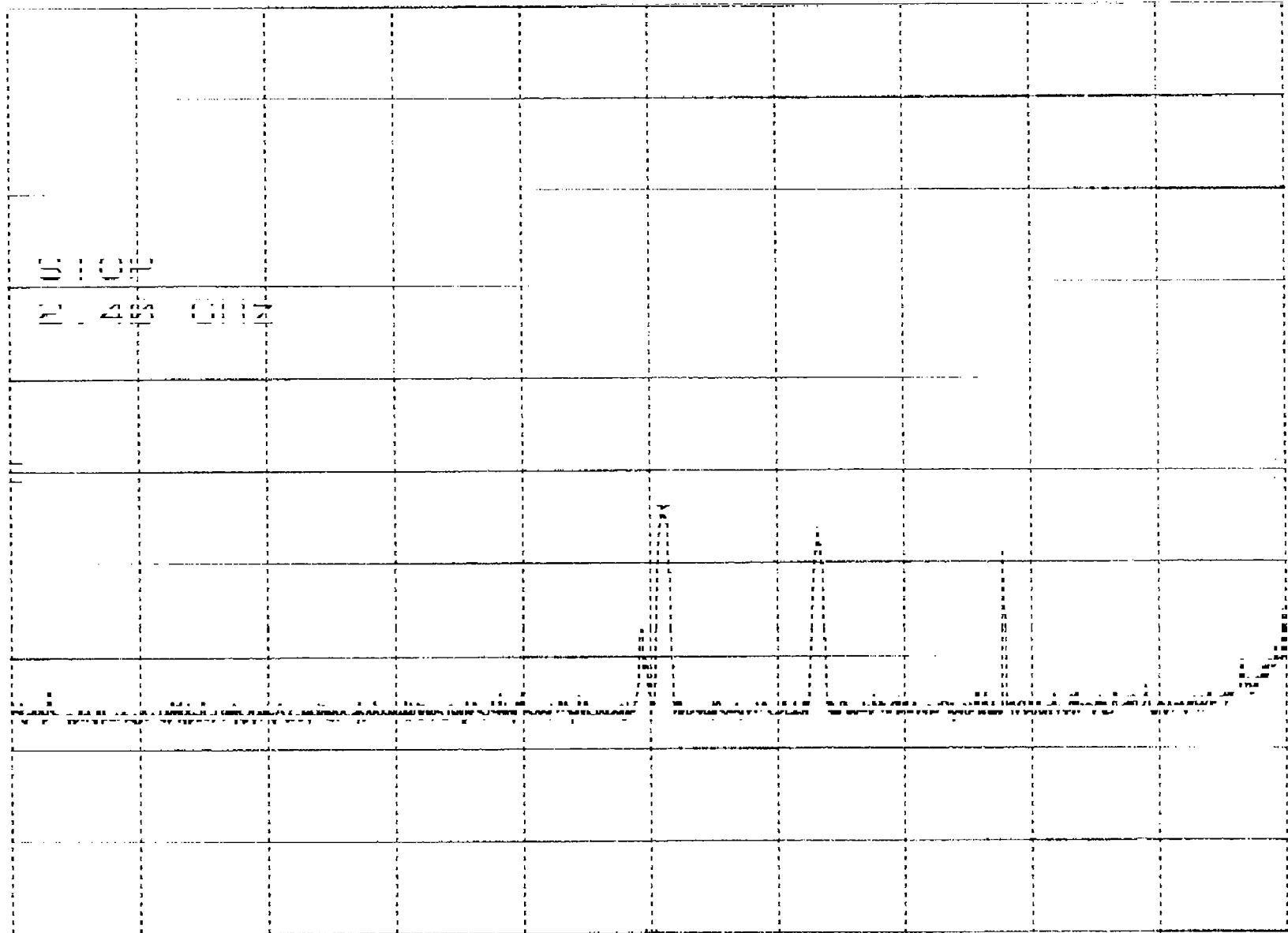
STOP 1.000 MHz  
VIEW 100 kHz  
STOP 1.000 MHz  
VIEW 200 MHz

SYMBOL, 4121 HI-BAND  
REF 10.0 dBm ATTN 20 dB

Plot 4.c3

MKR 1.714 GHz  
-43.80 dBm

hp  
10 dB



START 1.680 GHz  
REF 10.0 dBm

BW 100 kHz

VIEW 100 kHz

STOP 1.740 GHz  
SWP 400 MHz

SYMBOL. 4121-

*Plot Y.C.Y*

MKR 2.464 63 GHz

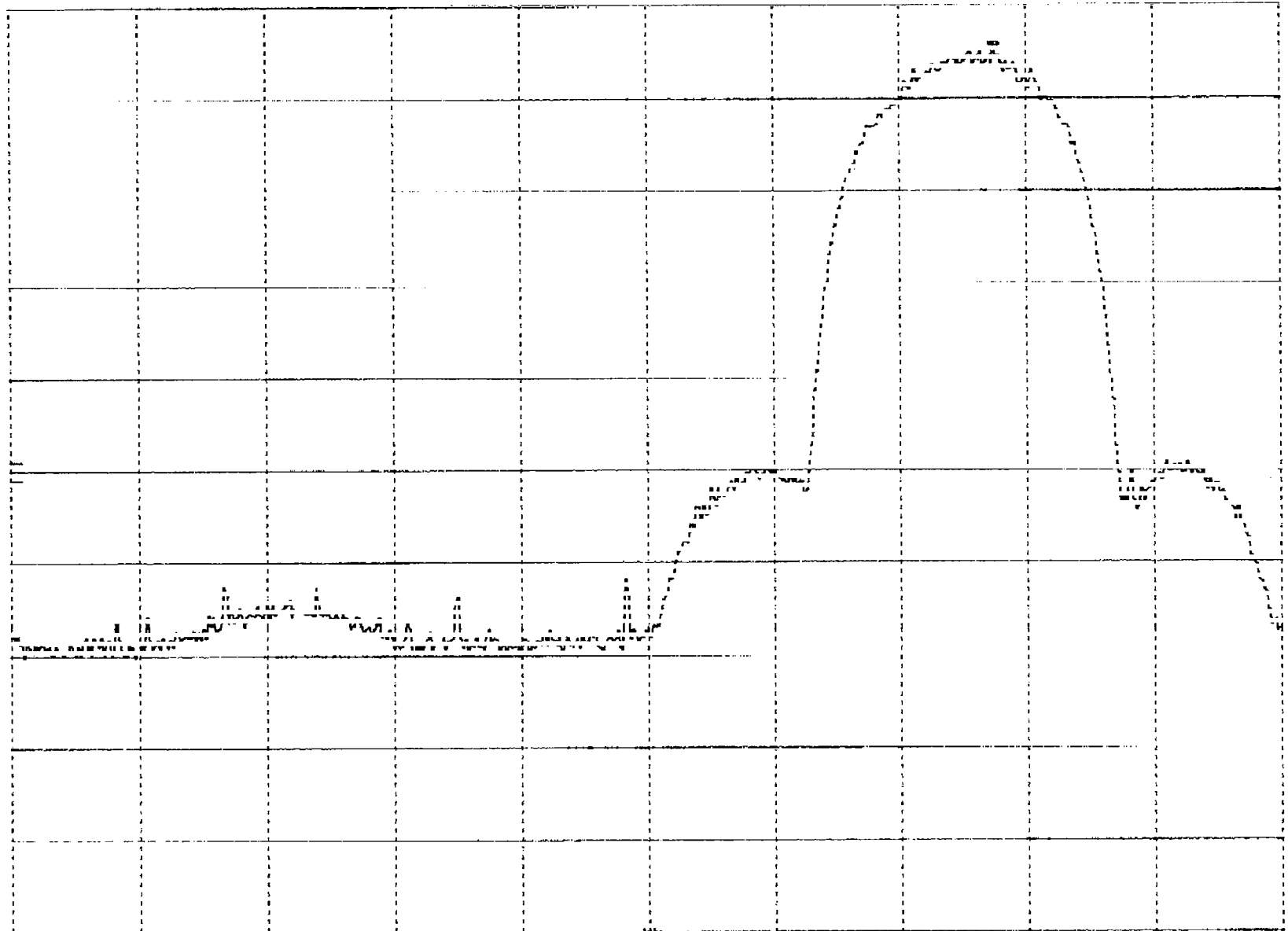
*hp*

REF 10.0 dBm

ATTEN 20 dB

5.80 dBm

*10 dB/*



START 2.455 0 GHz

RES BW 100 kHz

VIEW 100 kHz

STOP 2.481 5 GHz

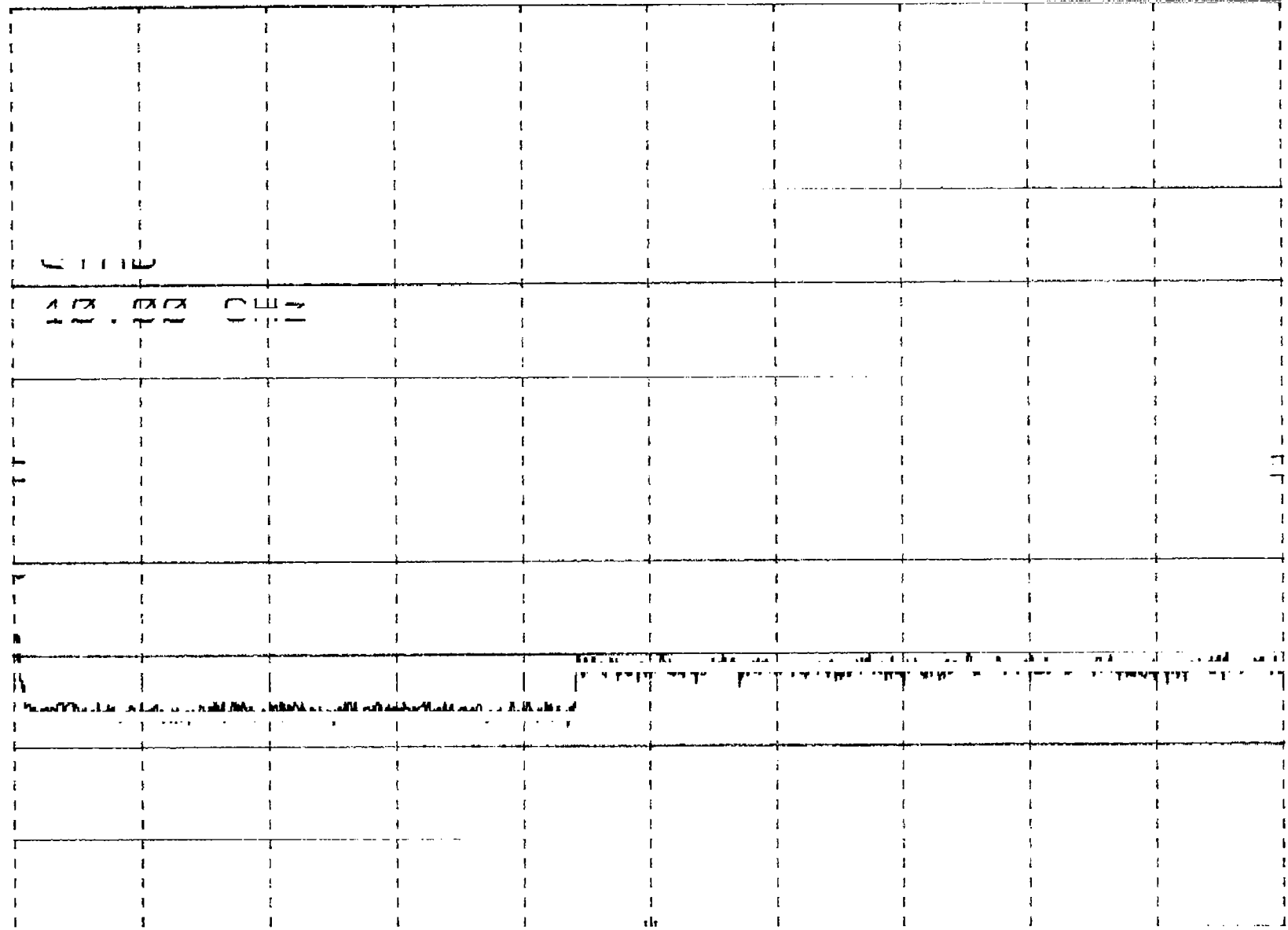
SWP 25.1 msec

SYMBOL, 4121 HI-BAND  
REF 10.0 dBm ATTN 20 dB

*Plot Y.c5*

MKR 2.484 GHz  
-51.20 dBm

*hp*  
12 40/



START 2.40 GHz STOP 2.55 GHz  
RES BW 100 kHz VBW 100 kHz QW 2 25 500

SYMBOL, 4121 HI-BAND

*Plot 4,06*

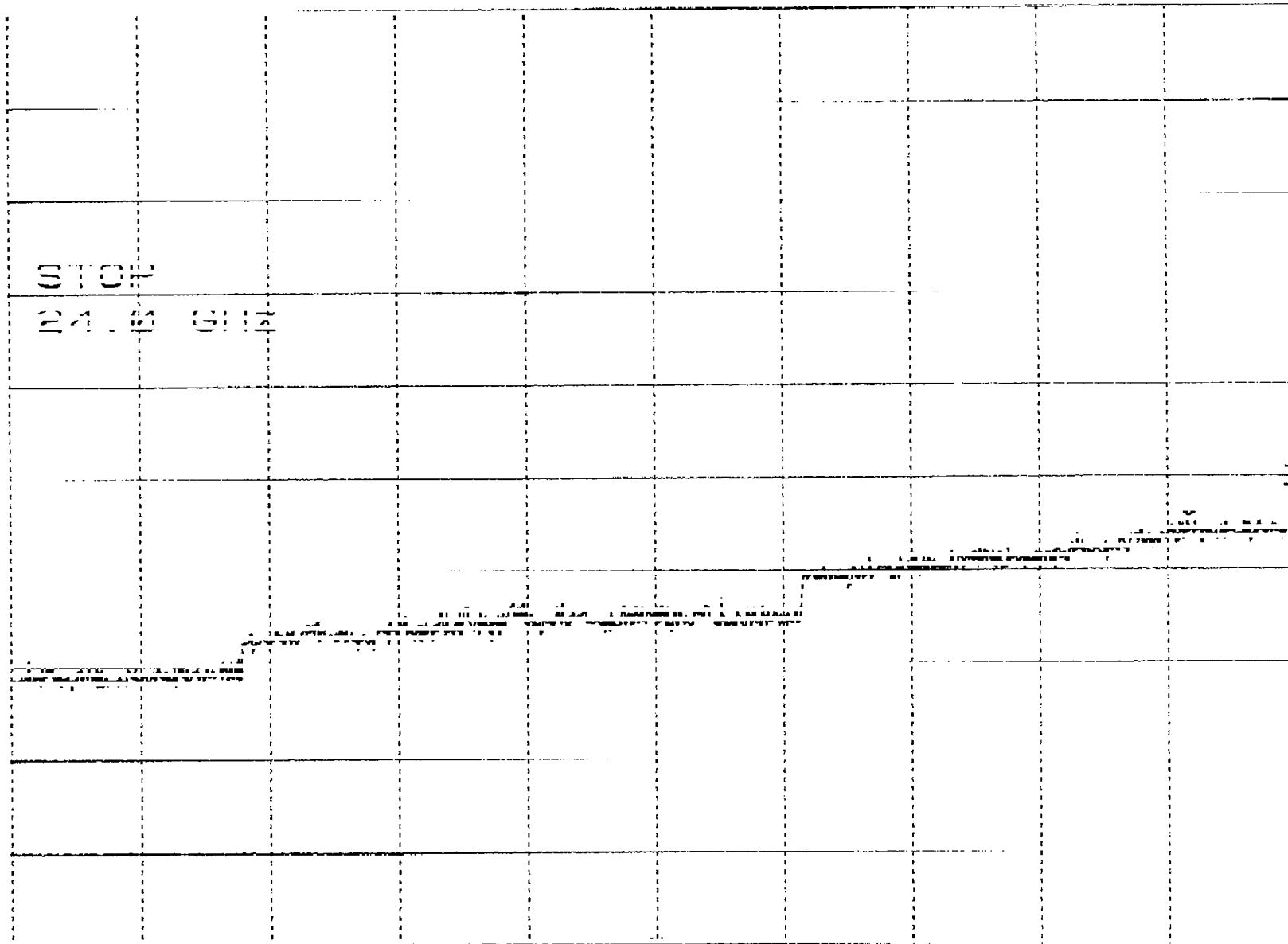
MKR 22.62 GHz

RFF 10.0 dBm

ATTEN 20 dB

-43.90 dBm

*hp*  
*10 dB*



START 19.5 GHz

FREQ BW 100 KHZ

VBW 100 KHZ

STOP 24.6 GHz

SWP 4.00 MHz



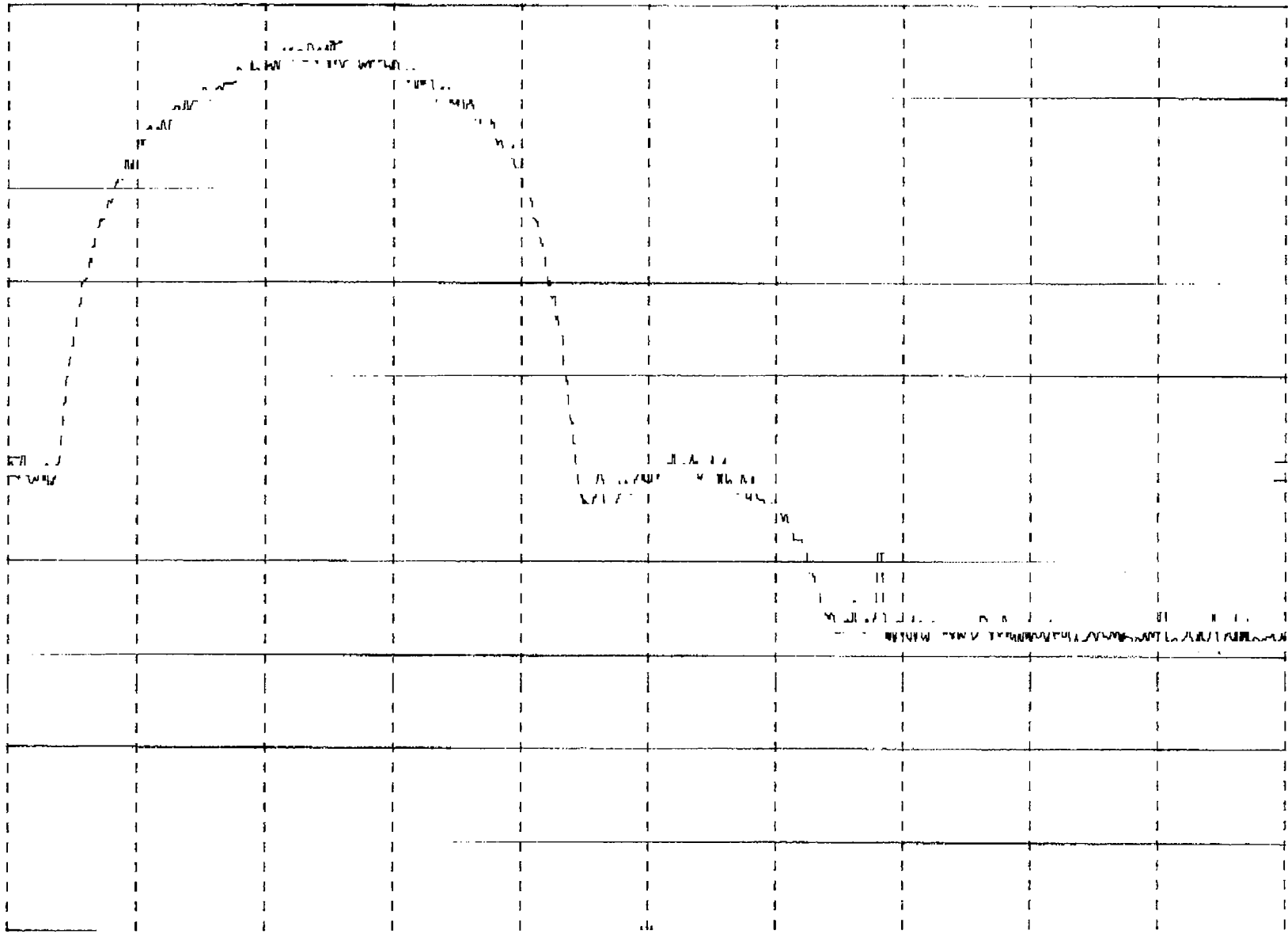
SYMBOL 4121  
REF 10.0 dBm

Plot 6.1

MKR  $\Delta$  21.45 MHz  
-54.70 dB

hp

10 dB



START 0.100 GHz  
REF BW 100 kHz

VBW 100 kHz

STOP 2.100 GHz  
SMB 20.0 MHz

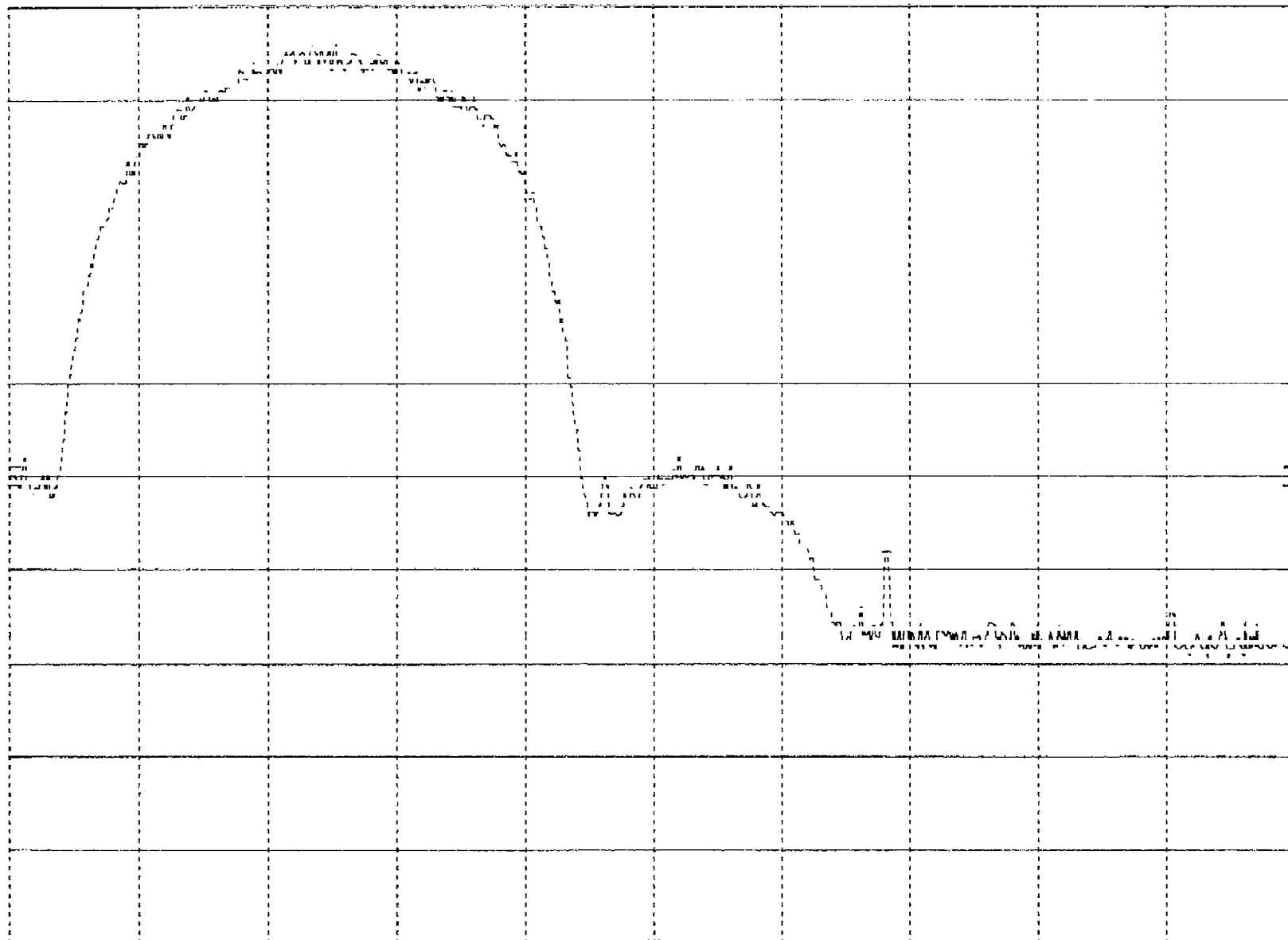
Plot 6, 2

SYMBOL 4121  
REF 10.0 dBm

ATTEN 20 dB

MKR 2.484 10 GHz  
-46.40 dBm

hp  
10 dB



START 2.470 0 GHz

RES BW 100 KHZ

VBW 100 KHZ

STOP 2.500 0 GHz

SWP 10.0 MSEC

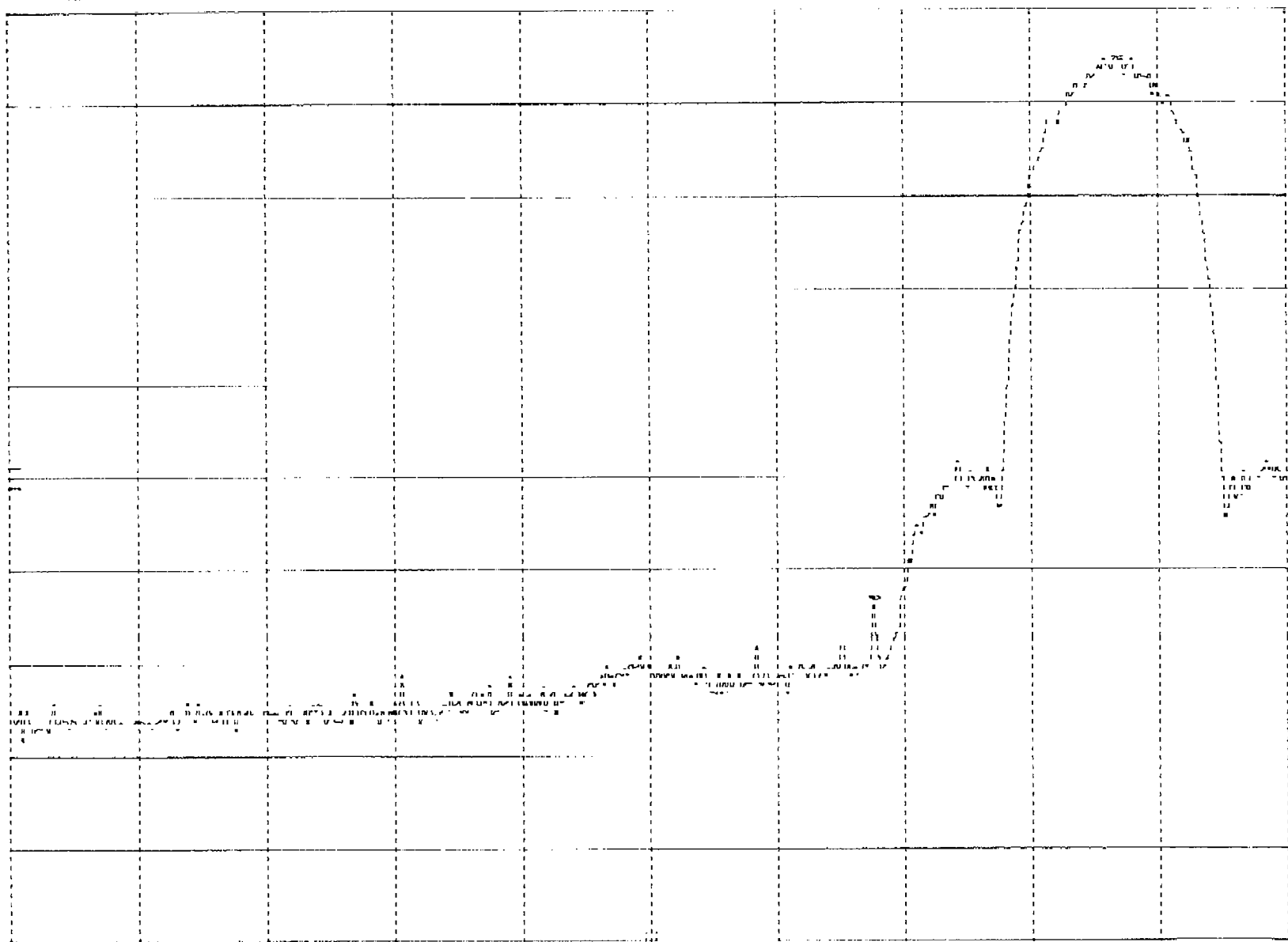
Plot 6.3

SYMBOL 4121  
REF 10.0 dBm

ATTEN 20 dB

MKR Δ-22.6 MHz  
-58.20 dB

10 dB/



START 2.310 GHz

RES BW 100 KHZ

VBW 100 KHZ

STOP 2.417 GHz

SWP 35.4 msec

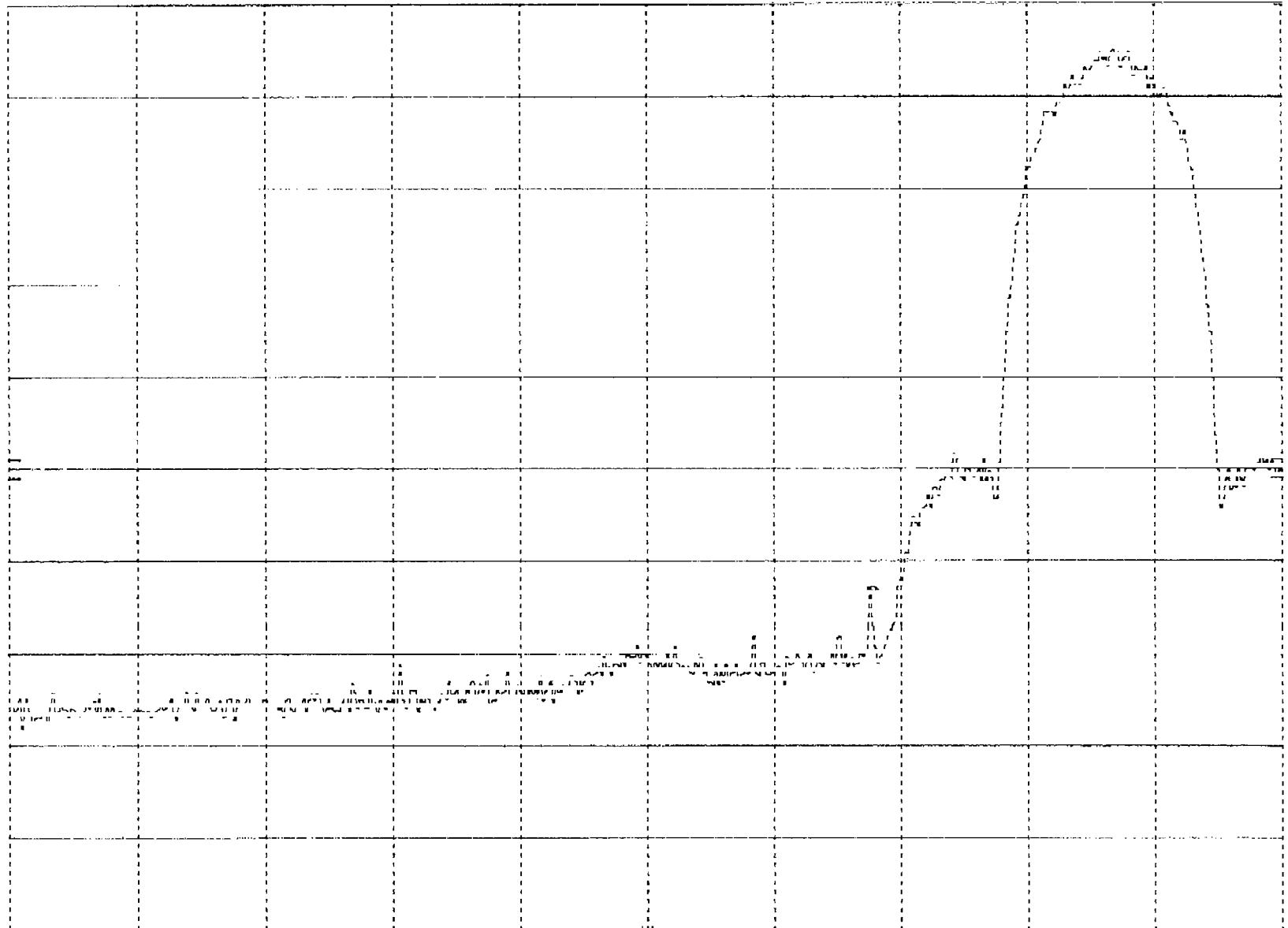
SYMBOL, 4121  
REF 10.0 dBm

ATTEN 20 dB

Plot 6.4

MKR 2.389 8 GHz  
-53.10 dBm

HP  
15 dB/



START 2.317 GHz

RES BW 100 kHz

VIEW 100 kHz

STOP 2.427 GHz

SWP 25.4 MHz