

PCTEST ENGINEERING LABORATORY, INC.

DUT: Dipole 2450 MHz; Type: D2450V2; Serial: 719

Communication System: CW; Frequency: 2450 MHz; Duty Cycle: 1:1

Medium: 2450 Brain ($\sigma = 1.85$ mho/m, $\epsilon_r = 40.30$, $\rho = 1000$ kg/m³)

Phantom section: Flat Section; Space: 10 mm

Test Date: 12-03-2003; Ambient Temp: 22.3°C; Tissue Temp: 20.4°C

Probe: ES3DV2 - SN3022; ConvF(4.5, 4.5, 4.5); Calibrated: 9/23/2003

Sensor-Surface: 3mm (Mechanical Surface Detection)

Electronics: DAE3 Sn445; Phantom: SAM 12b; Type: SAM 4.0; Serial: TP:1197

Measurement SW: DASY4, V4.1 Build 47; Postprocessing SW: SEMCAD, V1.8 Build 62

2450 MHz Dipole Validation

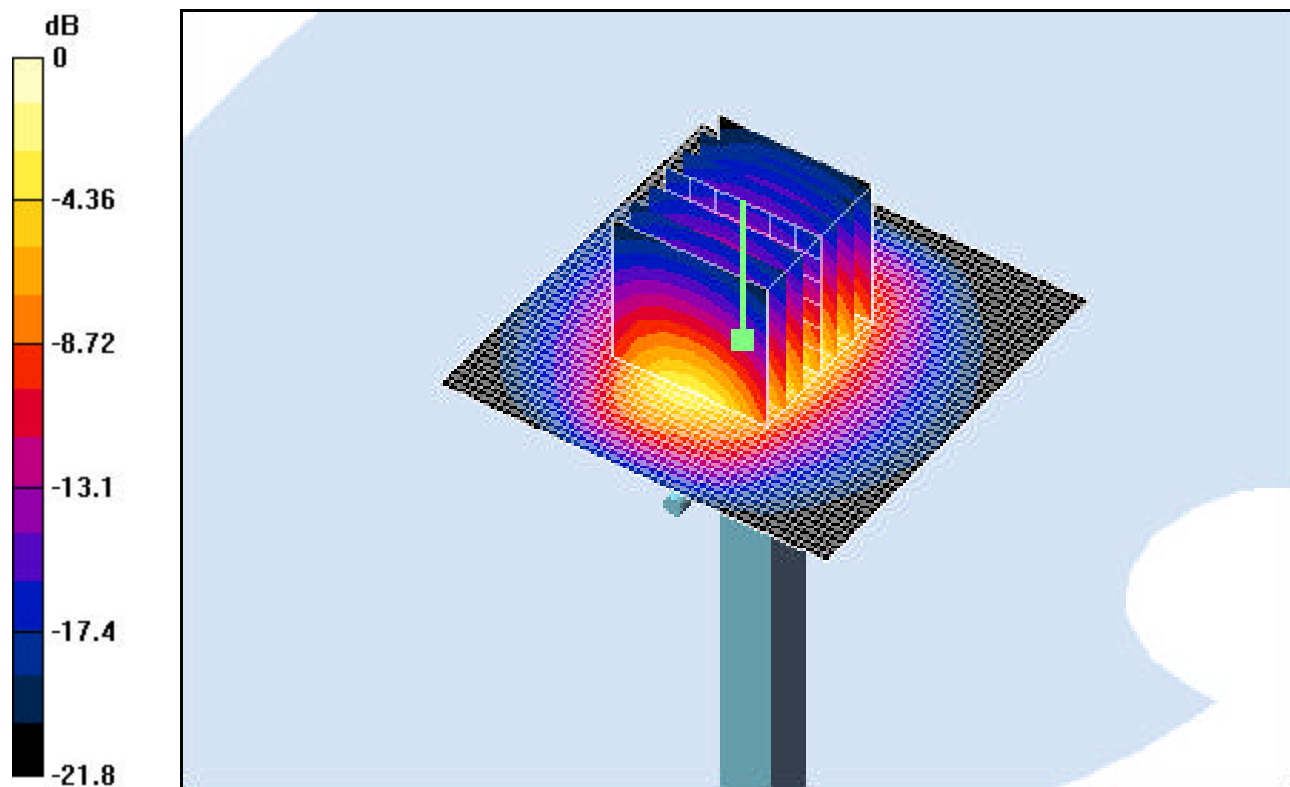
Area Scan (51x51x1): Measurement grid: dx=15mm, dy=15mm

Zoom Scan (7x7x7)/Cube 0: Measurement grid: dx=5mm, dy=5mm, dz=5mm

Input Power = 24.0 dBm (250 mW)

SAR(1 g) = 12.8 mW/g; SAR(10 g) = 5.92 mW/g

Target SAR(1g) = 13.1 mW/g; Deviation = -2.3 %



0 dB = 16.8mW/g