

PCTEST ENGINEERING LABORATORY, INC.

DUT: MK2042-1210-US; Type: Symbol Micro Kiosk; Serial: MXA31137

Communication System: 2.4GHz FHSS WLAN; Frequency: 2480 MHz; Duty Cycle: 1:1

Medium: 2450 Muscle ($\sigma = 1.91$ mho/m, $\epsilon_r = 53.24$, $\rho = 1000$ kg/m³)

Phantom section: Flat Section; Front Side; Space: 0.0 cm

Test Date: 12-04-2003; Ambient Temp: 22.1°C; Tissue Temp: 20.4°C

Probe: ES3DV2 - SN3022; ConvF(4.2, 4.2, 4.2); Calibrated: 9/23/2003

Sensor-Surface: 3mm (Mechanical Surface Detection)

Electronics: DAE3 Sn445; Phantom: SAM 12b; Type: SAM 4.0; Serial: TP:1197

Measurement SW: DASY4, V4.1 Build 47; Postprocessing SW: SEMCAD, V1.8 Build 62

ch.79, 2Mbps

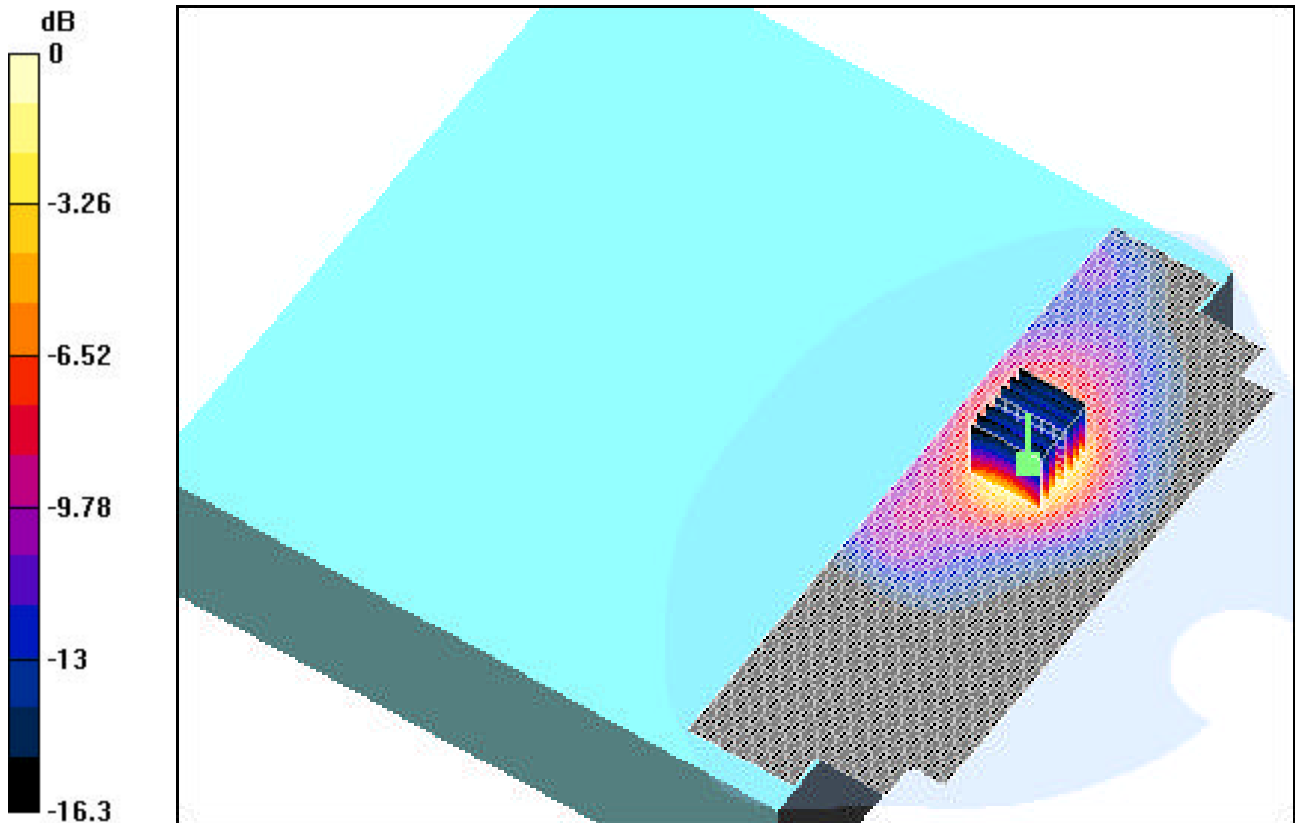
Area Scan (61x201x1): Measurement grid: dx=15mm, dy=15mm

Zoom Scan (7x7x7)/Cube 0: Measurement grid: dx=5mm, dy=5mm, dz=5mm

Peak SAR (extrapolated) = 2.82 W/kg

SAR(1 g) = 1.43 mW/g; SAR(10 g) = 0.725 mW/g

Reference Value = 11.5 V/m



0 dB = 1.83mW/g

PCTEST ENGINEERING LABORATORY, INC.

DUT: MK2042-1210-US; Type: Symbol Micro Kiosk; Serial: MXA31137

Communication System: 2.4GHz FHSS WLAN; Frequency: 2480 MHz; Duty Cycle: 1:1

Medium: 2450 Muscle ($\sigma = 1.91$ mho/m, $\epsilon_r = 53.24$, $\rho = 1000$ kg/m³)

Phantom section: Flat Section; Back Side; Space: 0.0 cm

Test Date: 12-04-2003; Ambient Temp: 22.1°C; Tissue Temp: 20.4°C

Probe: ES3DV2 - SN3022; ConvF(4.2, 4.2, 4.2); Calibrated: 9/23/2003

Sensor-Surface: 3mm (Mechanical Surface Detection)

Electronics: DAE3 Sn445; Phantom: SAM 12b; Type: SAM 4.0; Serial: TP:1197

Measurement SW: DASY4, V4.1 Build 47; Postprocessing SW: SEMCAD, V1.8 Build 62

ch.79, 2Mbps

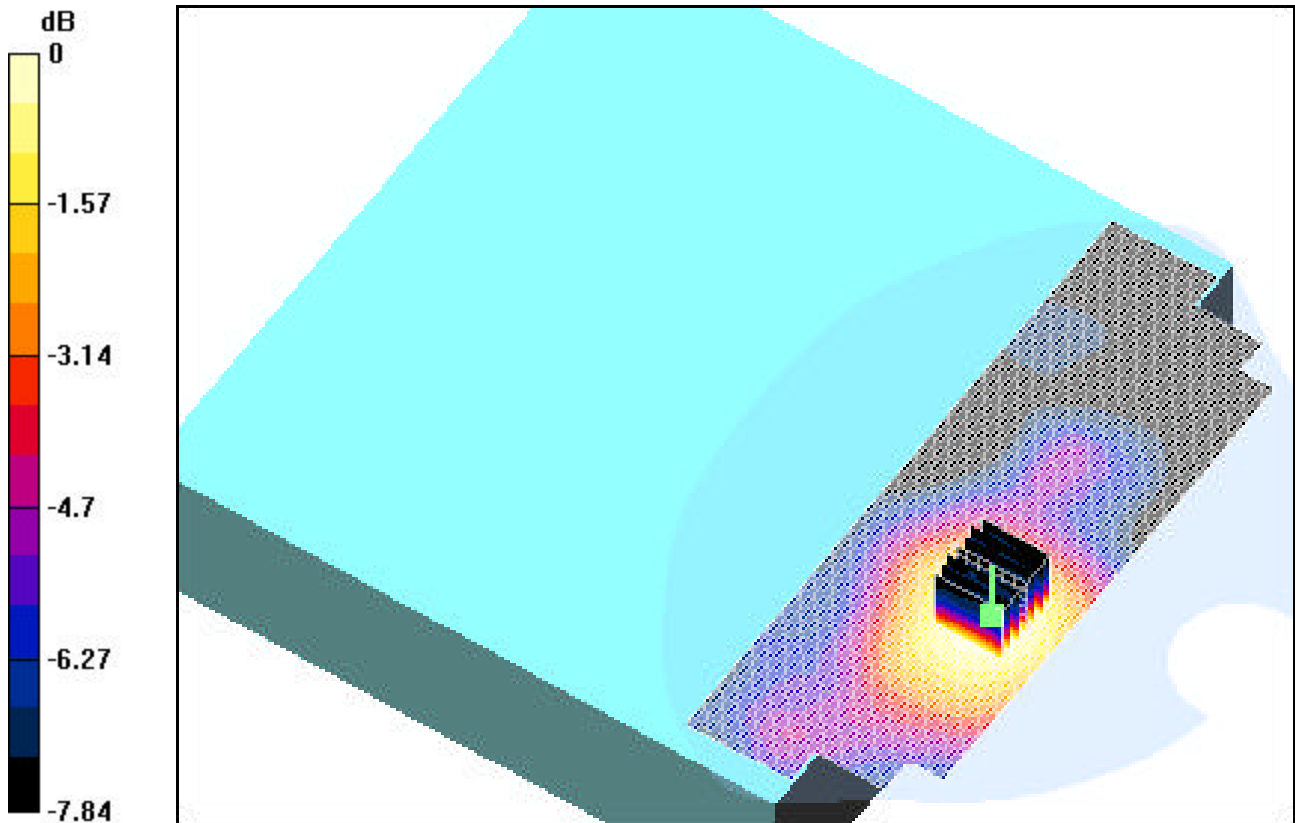
Area Scan (61x201x1): Measurement grid: dx=15mm, dy=15mm

Zoom Scan (7x7x7)/Cube 0: Measurement grid: dx=5mm, dy=5mm, dz=5mm

Peak SAR (extrapolated) = 0.194 W/kg

SAR(1 g) = 0.119 mW/g; SAR(10 g) = 0.078 mW/g

Reference Value = 5.45 V/m



0 dB = 0.140mW/g

PCTEST ENGINEERING LABORATORY, INC.

DUT: MK2042-1210-US; Type: Symbol Micro Kiosk; Serial: MXA31137

Communication System: 2.4GHz FHSS WLAN; Frequency: 2480 MHz; Duty Cycle: 1:1

Medium: 2450 Muscle ($\sigma = 1.91$ mho/m, $\epsilon_r = 53.24$, $\rho = 1000$ kg/m³)

Phantom section: Flat Section; Top Side; Space: 0.0 cm

Test Date: 12-03-2003; Ambient Temp: 22.5°C; Tissue Temp: 20.1°C

Probe: ES3DV2 - SN3022; ConvF(4.2, 4.2, 4.2); Calibrated: 9/23/2003

Sensor-Surface: 3mm (Mechanical Surface Detection)

Electronics: DAE3 Sn445; Phantom: SAM 12b; Type: SAM 4.0; Serial: TP:1197

Measurement SW: DASY4, V4.1 Build 47; Postprocessing SW: SEMCAD, V1.8 Build 62

ch.79, 2Mbps

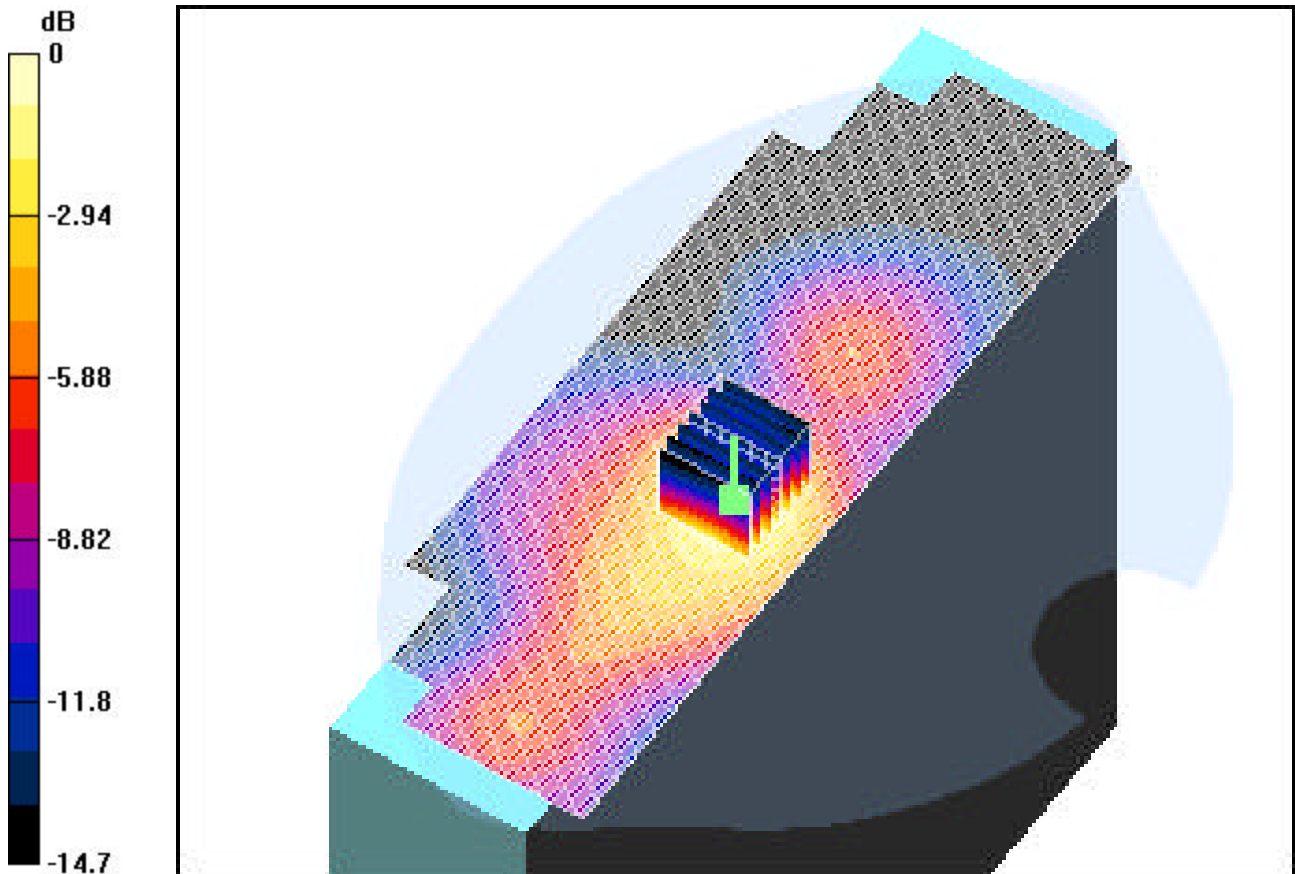
Area Scan (61x201x1): Measurement grid: dx=15mm, dy=15mm

Zoom Scan (7x7x7)/Cube 0: Measurement grid: dx=5mm, dy=5mm, dz=5mm

Peak SAR (extrapolated) = 1.31 W/kg

SAR(1 g) = 0.679 mW/g; SAR(10 g) = 0.373 mW/g

Reference Value = 11.6 V/m



0 dB = 0.847mW/g

PCTEST ENGINEERING LABORATORY, INC.

DUT: MK2042-1210-US; Type: Symbol Micro Kiosk; Serial: MXA31137

Communication System: 2.4GHz FHSS WLAN; Frequency: 2480 MHz; Duty Cycle: 1:1

Medium: 2450 Muscle ($\sigma = 1.91$ mho/m, $\epsilon_r = 53.24$, $\rho = 1000$ kg/m³)

Phantom section: Flat Section; Front Side; Space: 0.0 cm

Test Date: 12-04-2003; Ambient Temp: 22.1°C; Tissue Temp: 20.4°C

Probe: ES3DV2 - SN3022; ConvF(4.2, 4.2, 4.2); Calibrated: 9/23/2003

Sensor-Surface: 3mm (Mechanical Surface Detection)

Electronics: DAE3 Sn445; Phantom: SAM 12b; Type: SAM 4.0; Serial: TP:1197

Measurement SW: DASY4, V4.1 Build 47; Postprocessing SW: SEMCAD, V1.8 Build 62

ch.79, 2Mbps

Area Scan (61x201x1): Measurement grid: dx=15mm, dy=15mm

Zoom Scan (7x7x7)/Cube 0: Measurement grid: dx=5mm, dy=5mm, dz=5mm

Peak SAR (extrapolated) = 2.82 W/kg

SAR(1 g) = 1.43 mW/g; SAR(10 g) = 0.725 mW/g

Reference Value = 11.5 V/m

