

06/19/02

Cognitive_RD222424-0H4; Flat position; Frequency: 2437 MHz

Frequency: 2450 MHz; Crest factor: 1.0

Medium: Muscle 2450 MHz: $s = 2.04$ mho/m $\epsilon_r = 51.0$ $\rho = 1.00$ g/cm³

SAM Phantom; Flat Section; Position: (90°,90°)

Probe: ET3DV6 - SN1578; ConvF(4.10,4.10,4.10);

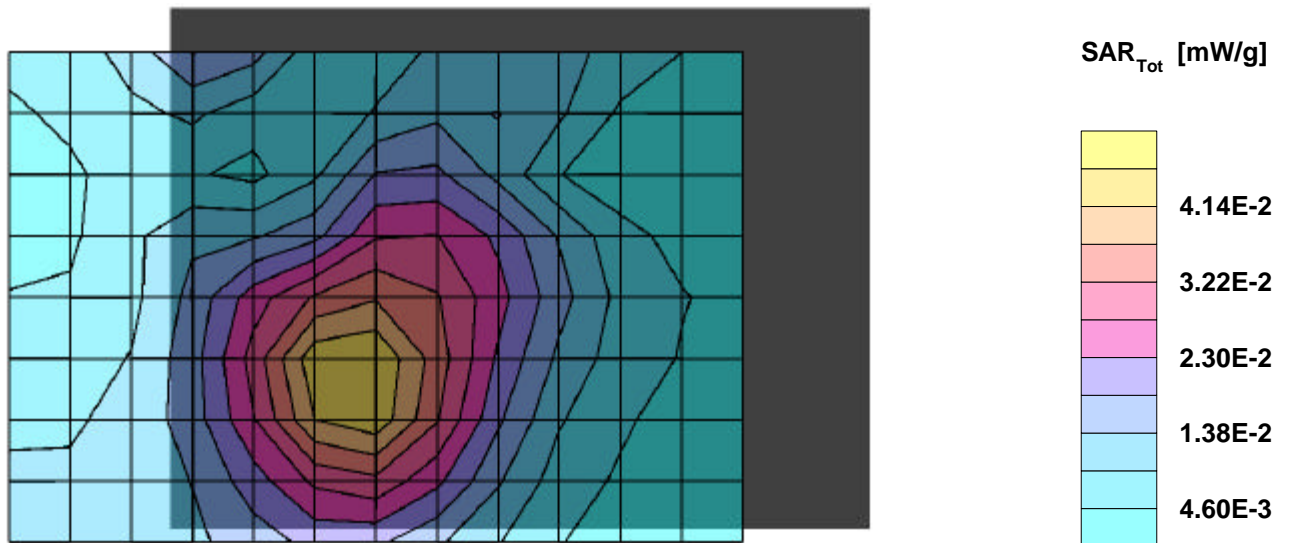
SAR:Cube 5x5x7: Peak: 0.0808 mW/g, SAR (1g): 0.0443 mW/g, SAR (10g): 0.0254 mW/g, (Worst-case extrapolation)

Penetration depth: 7.9 (7.5, 8.7) [mm]; Powerdrift: -0.03 dB

Coarse: Dx = 14.0, Dy = 14.0, Dz = 10.0

Ambient Temperature (degree C): 23.0

Liquid Temperature (degree C): 20.9



06/19/02

Cognitive_RD222424-0H4; Flat position; Frequency: 2462 MHz

Frequency: 2450 MHz; Crest factor: 1.0

Medium: Muscle 2450 MHz: $s = 2.04$ mho/m $\epsilon_r = 51.0$ $\rho = 1.00$ g/cm³

SAM Phantom; Flat Section; Position: (90°,90°)

Probe: ET3DV6 - SN1578; ConvF(4.10,4.10,4.10);

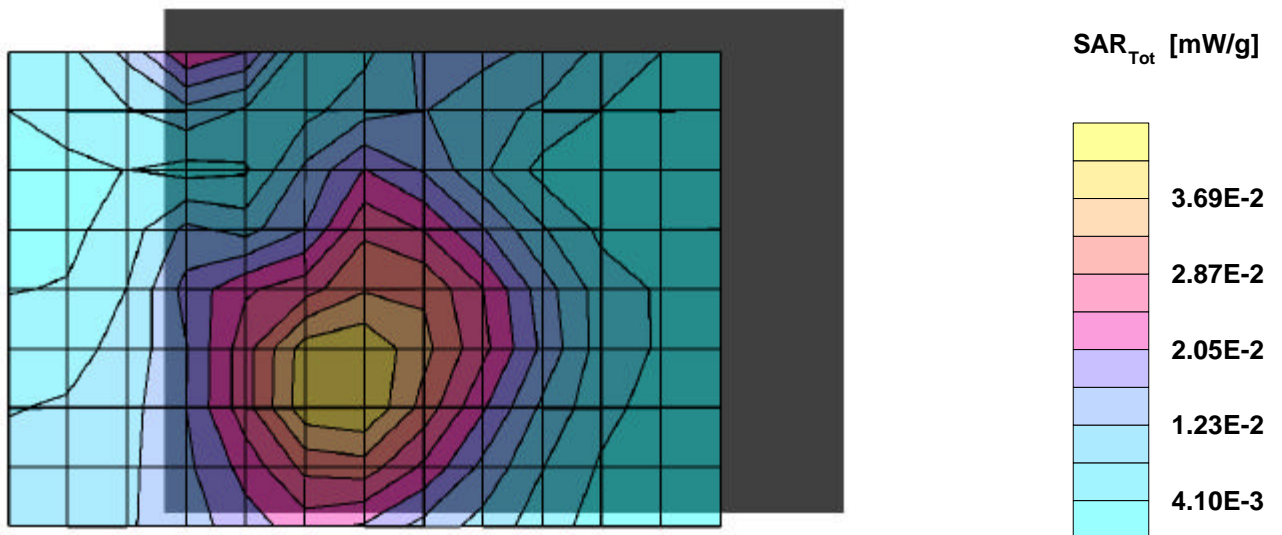
SAR:Cube 5x5x7: Peak: 0.0732 mW/g, SAR (1g): 0.0400 mW/g, SAR (10g): 0.0230 mW/g, (Worst-case extrapolation)

Penetration depth: 7.8 (7.4, 8.7) [mm]; Powerdrift: 0.04 dB

Coarse: Dx = 14.0, Dy = 14.0, Dz = 10.0

Ambient Temperature (degree C): 23.0

Liquid Temperature (degree C): 20.7



06/19/02

Cognitive_RD222424-0H4; Flat position; Frequency: 2437 MHz

Frequency: 2450 MHz; Crest factor: 1.0

Medium: Muscle 2450 MHz: $s = 2.04$ mho/m $\epsilon_r = 51.0$ $\rho = 1.00$ g/cm³

SAM Phantom; Flat Section; Position: (180°,90°)

Probe: ET3DV6 - SN1578; ConvF(4.10,4.10,4.10);

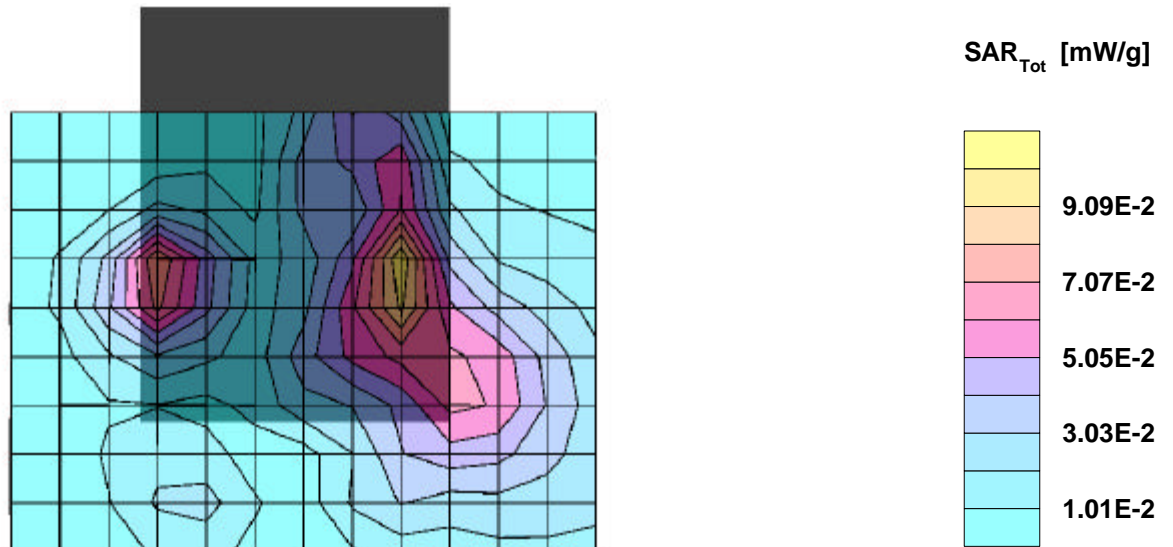
SAR:Cube 5x5x7: Peak: 0.188 mW/g, SAR (1g): 0.0953 mW/g, SAR (10g): 0.0488 mW/g, (Worst-case extrapolation)

Penetration depth: 7.1 (6.8, 8.1) [mm]; Powerdrift: 0.03 dB

Coarse: Dx = 14.0, Dy = 14.0, Dz = 10.0

Ambient Temperature (degree C): 23.0

Liquid Temperature (degree C): 20.5



06/19/02

Cognitive_RD222424-0H4; Flat position; Frequency: 2462 MHz

Frequency: 2450 MHz; Crest factor: 1.0

Medium: Muscle 2450 MHz: $s = 2.04$ mho/m $\epsilon_r = 51.0$ $\rho = 1.00$ g/cm³

SAM Phantom; Flat Section; Position: (180°,90°)

Probe: ET3DV6 - SN1578; ConvF(4.10,4.10,4.10);

SAR:Cube 5x5x7: Peak: 0.171 mW/g, SAR (1g): 0.0867 mW/g, SAR (10g): 0.0441 mW/g, (Worst-case extrapolation)

Penetration depth: 7.1 (6.8, 7.7) [mm]; Powerdrift: -0.18 dB

Coarse: Dx = 14.0, Dy = 14.0, Dz = 10.0

Ambient Temperature (degree C): 23.0

Liquid Temperature (degree C): 20.7

