

# Cognitive\_RDR222424-0H4; Flat (body) position; Frequency: 2412MHz

Frequency: 2450 MHz; Crest factor: 1.0

Medium: Muscle 2450 MHz:  $\sigma = 2.04$  mho/m  $\epsilon_r = 51.0$   $\rho = 1.00$  g/cm<sup>3</sup>

SAM Phantom; Flat Section; Position: (180°,90°)

Probe: ET3DV6 - SN1578; ConvF(4.10,4.10,4.10);

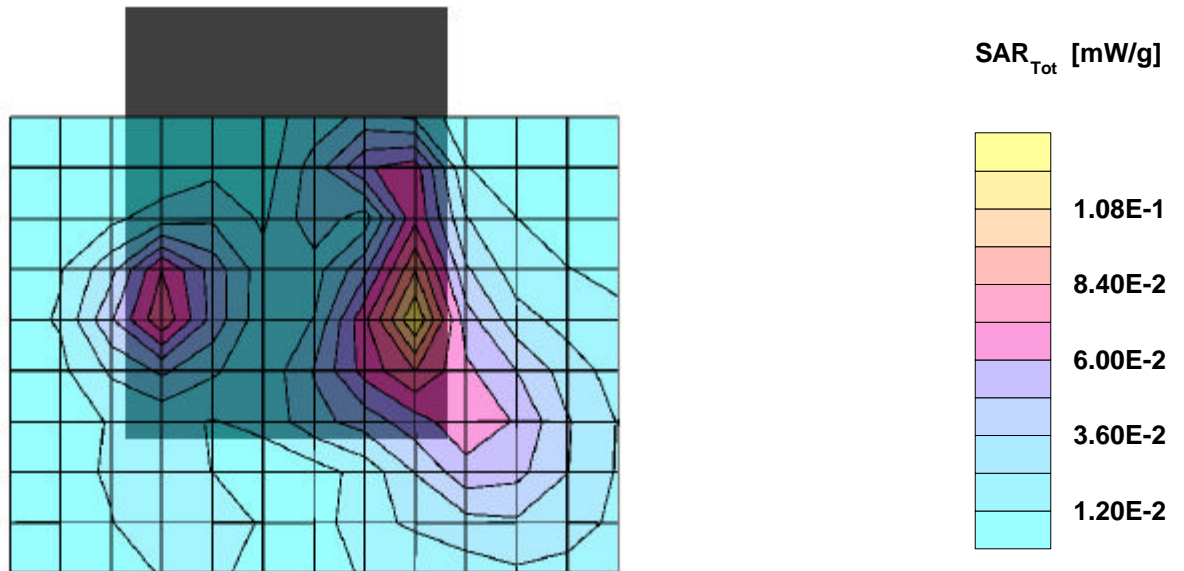
SAR:Cube 5x5x7: Peak: 0.215 mW/g, SAR (1g): 0.110 mW/g, SAR (10g): 0.0574 mW/g, (Worst-case extrapolation)

Penetration depth: 7.5 (7.1, 8.5) [mm]; Powerdrift: -0.10 dB

Coarse: Dx = 14.0, Dy = 14.0, Dz = 10.0

Ambient Temperature (degree C): 23

Liquid Temperature (degree C): 21



# Cognitive\_RDR222424-0H4; Flat (body) position; Frequency: 2412MHz

Frequency: 2450 MHz; Crest factor: 1.0

Medium: Muscle 2450 MHz:  $\sigma = 2.04$  mho/m  $\epsilon_r = 51.0$   $\rho = 1.00$  g/cm<sup>3</sup>

SAM Phantom; Section; Position:

Probe: ET3DV6 - SN1578; ConvF(4.10,4.10,4.10);

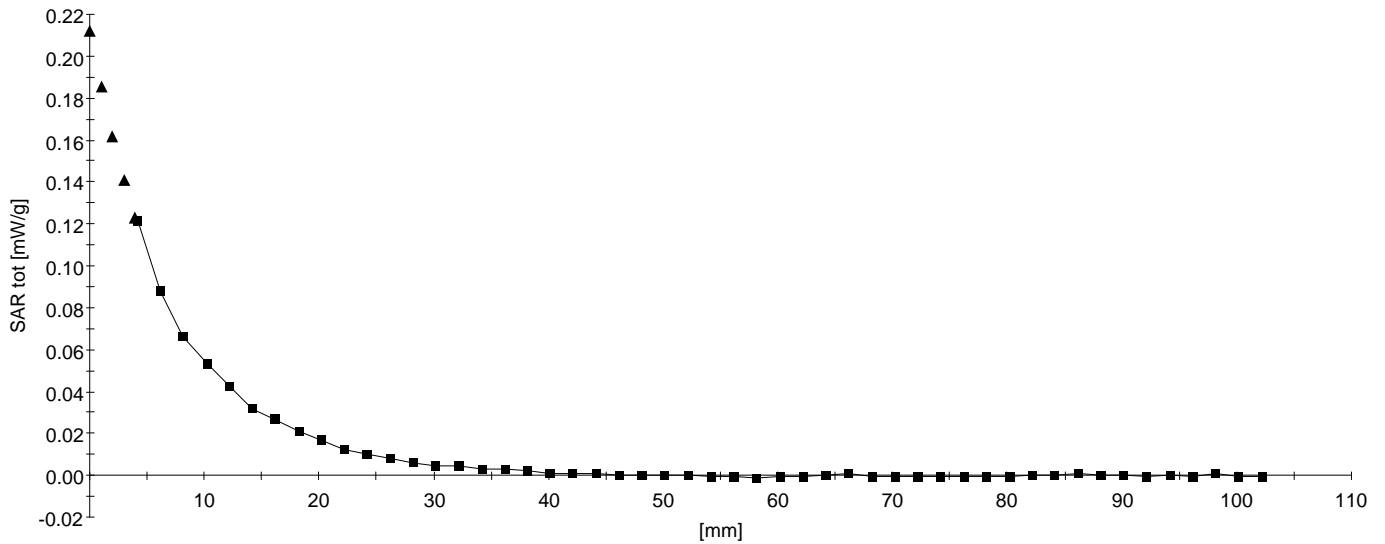
SAR:: , , ()

Penetration depth: 7.7 (7.1, 8.8) [mm];

Z-Axis: Dx = 0.0, Dy = 0.0, Dz = 2.0

Ambient Temperature (degree C): 23

Liquid Temperature (degree C): 21



# Cognitive\_RDR222424-0H4; Flat (body) position; Frequency: 2412MHz

Frequency: 2450 MHz; Crest factor: 1.0

Medium: Muscle 2450 MHz:  $\sigma = 2.04$  mho/m  $\epsilon_r = 51.0$   $\rho = 1.00$  g/cm<sup>3</sup>

SAM Phantom; Flat Section; Position: (90°,90°)

Probe: ET3DV6 - SN1578; ConvF(4.10,4.10,4.10);

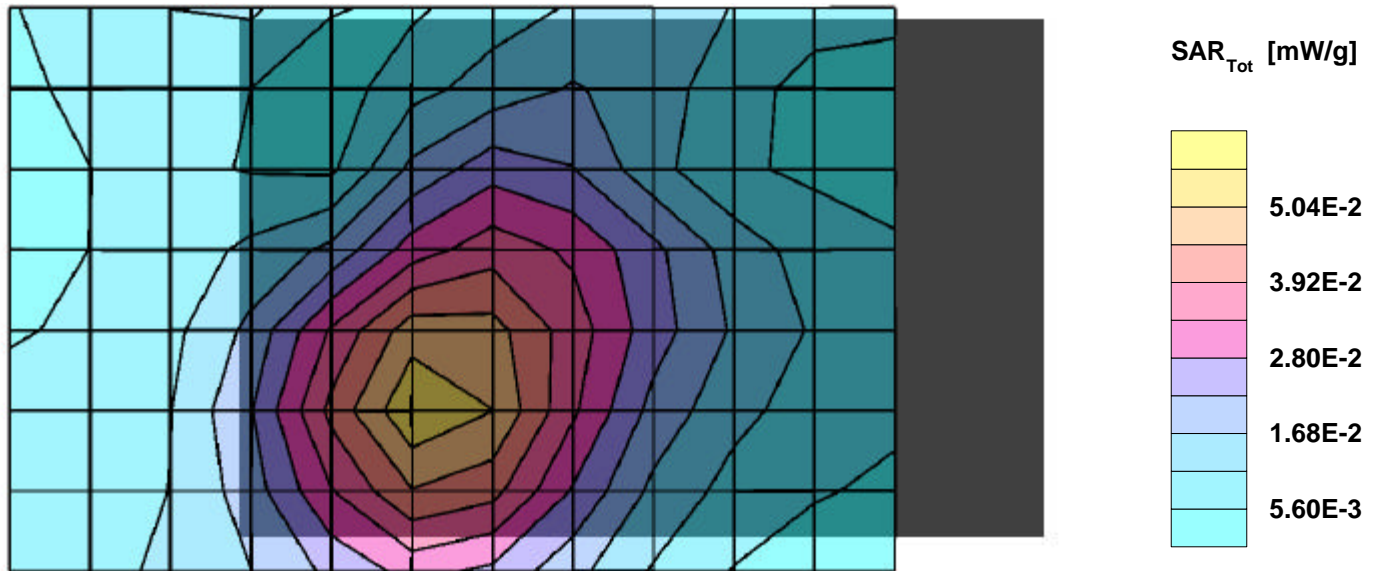
SAR:Cube 5x5x7: Peak: 0.0933 mW/g, SAR (1g): 0.0510 mW/g, SAR (10g): 0.0296 mW/g, (Worst-case extrapolation)

Penetration depth: 8.2 (7.5, 9.3) [mm]; Powerdrift: 0.05 dB

Coarse: Dx = 14.0, Dy = 14.0, Dz = 10.0

Ambient Temperature (degree C): 23

Liquid Temperature (degree C): 21



# Cognitive\_RDR222424-0H4; Flat (body) position; Frequency: 2412MHz

Frequency: 2450 MHz; Crest factor: 1.0

Medium: Muscle 2450 MHz:  $\sigma = 2.04$  mho/m  $\epsilon_r = 51.0$   $\rho = 1.00$  g/cm<sup>3</sup>

SAM Phantom; Section; Position:

Probe: ET3DV6 - SN1578; ConvF(4.10,4.10,4.10);

SAR:: , , ()

Penetration depth: 8.3 (7.7, 9.5) [mm];

Z-Axis: Dx = 0.0, Dy = 0.0, Dz = 2.0

Ambient Temperature (degree C): 23

Liquid Temperature (degree C): 21

