

System Validation - D2450V2 S/N:706

(Antenna input power: 250 mW)

SAM; Flat

Probe: ET3DV6 - SN1578; ConvF(4.50,4.50,4.50); Crest factor: 1.0

Head 2450MHz: $\sigma = 1.88$ mho/m $\epsilon_r = 38.6$ $\rho = 1.00$ g/cm³

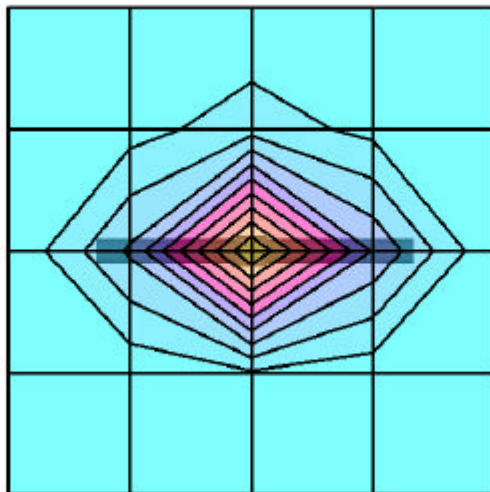
Cube 5x5x7: Peak: 29.8 mW/g, SAR (1g): 14.3 mW/g, SAR (10g): 6.54 mW/g, (Worst-case extrapolation)

Penetration depth: 6.4 (6.2, 7.1) [mm]

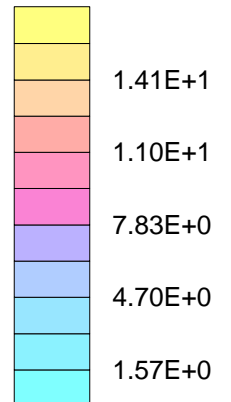
Powerdrift: 0.02 dB

Ambient Temperature (degree C): 23

Liquid Temperature (degree C): 21



SAR_{Tot} [mW/g]



System Validation - D2450V2 S/N:706

(Antenna input power: 250 mW)

SAM;
Probe: ET3DV6 - SN1578; ConvF(4.50,4.50,4.50); Crest factor: 1.0
Head 2450MHz: $\sigma = 1.88 \text{ mho/m}$ $\epsilon_r = 38.6$ $\rho = 1.00 \text{ g/cm}^3$
: , , ()
Penetration depth: 6.4 (6.2, 7.1) [mm]

Ambient Temperature (degree C): 23
Liquid Temperature (degree C): 21

