




Hearing Aid Compatibility (HAC) RF Emissions Test Report

EQUIPMENT : Mobile Computer
BRAND NAME : Symbol
MODEL NAME : FR6876
FCC ID : H9PFR6876
STANDARD : FCC 47 CFR §20.19
ANSI C63.19-2007
M CATEGORY : M3
APPLICANT : Symbol Technologies, Inc., A Motorola Company
230 Victoria Street #12-06/10 Bugis Junction Office Tower
Singapore 188024

The product sample received on Oct. 31, 2008 and completely tested on Mar. 07, 2009. We, SPORTON INTERNATIONAL INC., would like to declare that the tested sample has been evaluated in accordance with the procedures and shown the compliance with the applicable technical standards.

The test results in this report apply exclusively to the tested model / sample. Without written approval of SPORTON INTERNATIONAL INC., the test report shall not be reproduced except in full.

Reviewed by:



Roy Wu / Manager



SPORTON INTERNATIONAL INC.

No. 52, Hwa Ya 1st Rd., Hwa Ya Technology Park, Kwei-Shan Hsiang, Tao Yuan Hsien, Taiwan, R.O.C.



Table of Contents

Revision History.....3
1. Statement of Compliance.....4
2. Administration Data.....5
2.1 Testing Laboratory.....5
2.2 Applicant.....5
2.3 Manufacturer.....5
2.4 Application Details.....5
3. General Information.....6
3.1 Description of Device Under Test (DUT).....6
3.2 Product Photos.....8
3.3 Applied Standards.....8
3.4 Test Conditions.....9
3.5.1 Ambient Condition.....9
3.5.2 Test Configuration.....9
4. Hearing Aid Compliance (HAC).....10
4.1 Introduction.....10
5. HAC RF Emission Measurement Setup.....11
5.1 DASY4 E-Field and H-Field Probe System.....12
5.1.1 E-Field Probe Specification.....12
5.1.2 H-Field Probe Description.....12
5.2.3 Probe Tip Description.....13
5.2 DATA Acquisition Electronics (DAE).....15
5.3 Robot.....15
5.4 Measurement Server.....15
5.5 Phone Positioner.....16
5.6 Test Arch Phantom.....17
5.7 Data Storage and Evaluation.....18
5.7.1 Data Storage.....18
5.7.2 Data Evaluation.....18
5.8 Test Equipment List.....20
6. Uncertainty Assessment.....21
7. HAC RF Emission Measurement Evaluation.....23
7.1 Purpose of System Performance Check.....23
7.2 System Setup.....23
7.3 Validation Results.....25
8. RF Field Probe Modulation Factor.....26
9. Description for DUT Testing Position.....30
10. RF Emissions Test Procedure.....32
11. HAC RF Emission Test Results.....33
11.1 Conducted Power.....33
11.2 E-Field Emission.....33
11.3 H-Field Emission.....34
12. References.....35
Appendix A - System Performance Check Data
Appendix B - HAC RF Emission Measurement Data
Appendix C - Calibration Date
Appendix D - Product Photographs
Appendix E - Setup Photographs



Revision History

REPORT NO.	VERSION	DESCRIPTION	ISSUED DATE
HA803106-01A	Rev. 01	Initial issue of report	Apr. 06, 2009



1. Statement of Compliance

The Hearing Aid Compliance (HAC) maximum results found during testing for the **Symbol Technologies, Inc., A Motorola Company Mobile Computer Symbol FR6876** are as follows (with expanded uncertainty $\pm 29.4\%$ for E-field and $\pm 21.8\%$ for H-field):

Band	E-Field (V/m)	M Rating	H-Field (A/m)	M Rating
GSM850	149.1	M4	0.168	M4
GSM1900	74.0	M3	0.148	M3
WCDMA Band V	51.8	M4	0.086	M4
WCDMA Band II	37.7	M4	0.075	M4

They are in compliance with HAC limits specified in guidelines FCC 47 CFR §20.19 and ANSI Standard ANSI C63.19 for HAC Rated category M3.

Results Summary : M Category = M3 (ANSI C63.19-2007)



2. Administration Data

2.1 Testing Laboratory

Test Site	SPORTON INTERNATIONAL INC.
Test Site Location	No. 52, Hwa Ya 1 st Rd., Hwa Ya Technology Park, Kwei-Shan Hsiang, Tao Yuan Hsien, Taiwan, R.O.C. TEL: +886-3-327-3456 FAX: +886-3-328-4978
Test Site No.	Sporton Site No. : SAR01-HY

2.2 Applicant

Company Name	Symbol Technologies, Inc., A Motorola Company
Address	230 Victoria Street #12-06/10 Bugis Junction Office Tower Singapore 188024

2.3 Manufacturer

Company Name	Inventec Appliances Corp.
Address	No. 37, Wugong 5th Road, Wugu Industrial Park, Taipei Country 248, Taiwan, R.O.C.

2.4 Application Details

Date of Receipt of Application	Oct. 31, 2008
Date of Start during the Test	Jan. 14, 2009
Date of End during the Test	Mar. 07, 2009



3. General Information

3.1 Description of Device Under Test (DUT)

Product Feature & Specification	
DUT Type	Mobile Computer
Trade Name	Symbol
Model Name	FR6876
FCC ID	H9PFR6876
Tx Frequency	GSM850 : 824 MHz ~ 849 MHz GSM1900 : 1850 MHz ~ 1910 MHz WCDMA Band V : 824 MHz ~ 849 MHz WCDMA Band II : 1850 MHz ~ 1910 MHz
Rx Frequency	GSM850 : 869 MHz ~ 894 MHz GSM1900 : 1930 MHz ~ 1990 MHz WCDMA Band V : 869 MHz ~ 894 MHz WCDMA Band II : 1930 MHz ~ 1990 MHz
Maximum Output Power to Antenna	GSM850 : 32.02 dBm GSM1900 : 29.21 dBm WCDMA Band V : 22.69 dBm WCDMA Band II : 23.09 dBm
Antenna Type	Fixed Internal Antenna
HW Version	DVT
SW Version	Modem: 0029-010709-M OS: EDA-DVT1-0.20.0039-011409-WWE-H
Type of Modulation	GSM : GMSK WCDMA : QPSK
DUT Stage	Identical Prototype

List of Accessory:

Specification of Accessory		
Cradle	Brand Name	Symbol
	Model Name	CRD7X00-1
	Power Rating	12Vdc, 3.33A
Cradle Adapter	Brand Name	HIPRO
	Model Name	HP-O2040D43
	Power Rating	I/P: 100-240Vac, 50-60Hz, 1.5A; O/P: 12Vdc, 3.33A
	Power Cord Type	1.8 meter shielded cable with ferrite core
Product Charging Adapter	Brand Name	MOTOROLA
	Model Name	EADP-16BB A
	Power Rating	I/P: 100-240Vac, 50-60Hz, 0.4A; O/P: 5.4Vdc, 3A
	Power Cord Type	1.83 meter shielded cable with ferrite core
Product Charging Cable 1	Brand Name	MOTOROLA
	Model Name	25-102775-01R
	Power Rating	I/P: 5.4V, 3A
	Type	1.35 meter non-shielded cable with ferrite core
Product Charging Cable 2	Brand Name	MOTOROLA
	Model Name	25-118703-01R
	Power Rating	I/P: 5.4V, 3A
	Type	1.35 meter non-shielded cable with ferrite core
Battery 1	Brand Name	MOTOROLA
	Part Number	82-71364-04
	Power Rating	3.7Vdc, 1950mAh
	Type	Li-ion
Battery 2	Brand Name	MOTOROLA
	Part Number	82-71364-05
	Power Rating	3.7Vdc, 3600mAh
	Type	Li-ion
Earphone	Brand Name	Symbol
	Part Number	90-17C28-001R
	Signal Line Type	1.24 meter non-shielded cable without ferrite core
USB Cable	Brand Name	MOTOROLA
	Part Number	25-68596-01R
	Type	1.69 meter shielded cable without ferrite core

Remark:

1. Product Charging Cable 1 (P/N: 25-102775-01R) and Product Charging Cable 2 (P/N: 25-118703-01R) are exactly the same which was declared by the manufacturer, and only Product Charging Cable 1 (P/N: 25-102775-01R) was performed on all the tests.
2. Above DUT's information was declared by manufacturer. Please refer to the specifications of manufacturer or User's Manual for more detailed features description.



3.2 Product Photos

Refer to Appendix D.

3.3 Applied Standards

The ANSI Standard ANSI C63.19-2007 represents performance requirements for acceptable interoperability of hearing aids with wireless communications devices. When these parameters are met, a hearing aid operates acceptably in close proximity to a wireless communications device.

The following AWF factors shall be used for the standard transmission protocols:

Standard	Technology	AWF (dB)
TIA/EIA/IS-2000	CDMA	0
TIA/EIA-136	TDMA (50 Hz)	0
J-STD-007	GSM (217)	-5
T1/T1P1/3GPP	UMTS (WCDMA)	0
iDENTM	TDMA (22 and 11 Hz)	0

Table 3.1 Articulation Weighting Factor (AWF)

Category	Telephone RF Parameters				
	Near Field	AWF	E-Field Emissions	H-Field Emissions	
< 960 MHz					
Category M1	0	631.0 – 1122.0	V/m	1.91 – 3.39	A/m
	-5	473.2 – 841.4	V/m	1.43 – 2.54	A/m
Category M2	0	354.8 – 631.0	V/m	1.07 – 1.91	A/m
	-5	266.1 – 473.2	V/m	0.80 – 1.43	A/m
Category M3	0	199.5 – 354.8	V/m	0.6 – 1.07	A/m
	-5	149.6 – 266.1	V/m	0.45 – 0.80	A/m
Category M4	0	< 199.5	V/m	< 0.60	A/m
	-5	< 149.6	V/m	< 0.45	A/m
> 960 MHz					
Category M1	0	199.5 – 354.8	V/m	0.60 – 1.07	A/m
	-5	149.6 – 266.1	V/m	0.45 – 0.80	A/m
Category M2	0	112.2 – 199.5	V/m	0.34 – 0.60	A/m
	-5	84.1 – 149.6	V/m	0.25 – 0.45	A/m
Category M3	0	63.1 – 112.2	V/m	0.19 – 0.34	A/m
	-5	47.3 – 84.1	V/m	0.14 – 0.25	A/m
Category M4	0	< 63.1	V/m	< 0.19	A/m
	-5	< 47.3	V/m	< 0.14	A/m

Table 3.2 Telephone near-field categories in linear units



3.4 Test Conditions

3.5.1 Ambient Condition

Ambient Temperature	20-24°C
Humidity	<60%

3.5.2 Test Configuration

The device was controlled by using a base station emulator R&S CMU200. Communication between the device and the emulator was established by air link. Measurements were performed on the low, middle and high channels of both bands. The DUT was set from the emulator to radiate maximum output power during all tests.



4. Hearing Aid Compliance (HAC)

4.1 Introduction

The federal communication commission (FCC) adopted ANSI C63.19 as HAC test standard.

5. HAC RF Emission Measurement Setup

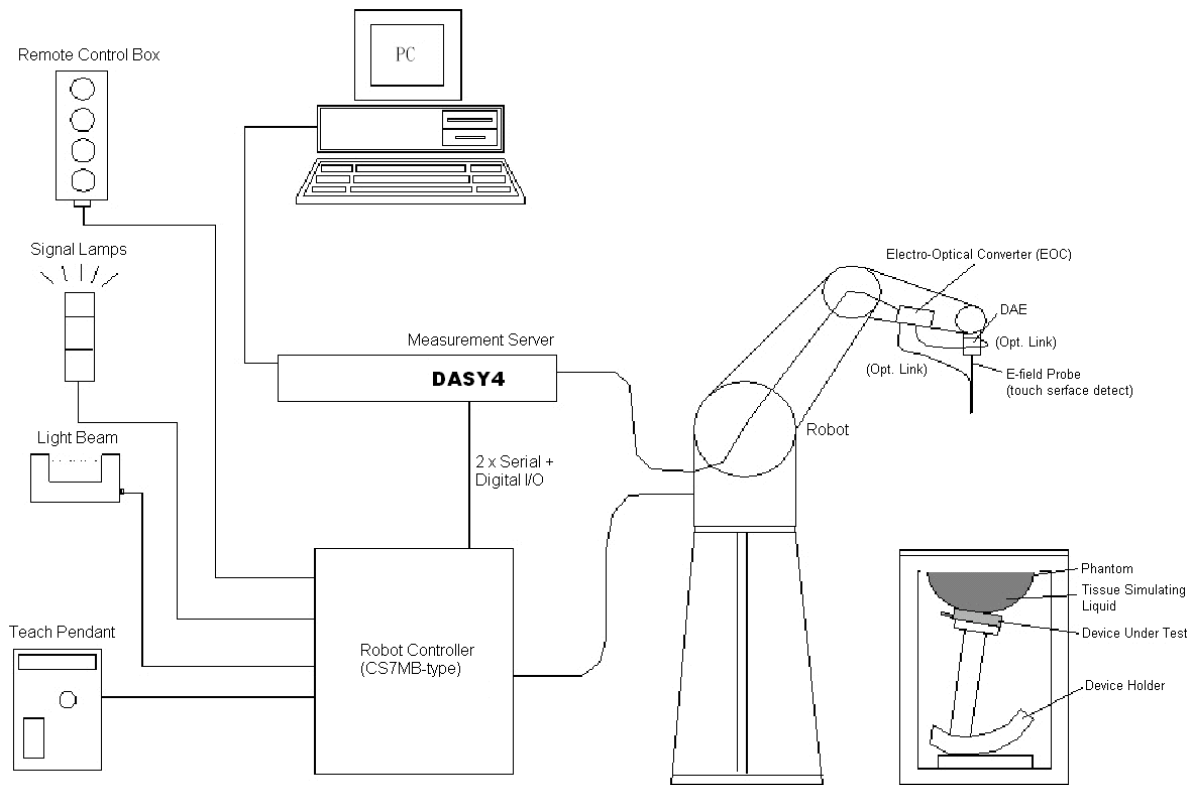


Fig. 5.1 DASY4 System

The DASY4 system for performance compliance tests is illustrated above graphically. This system consists of the following items:

- A standard high precision 6-axis robot with controller, a teach pendant and software
- A data acquisition electronic (DAE) attached to the robot arm extension
- A dosimetric probe equipped with an optical surface detector system
- The electro-optical converter (ECO) performs the conversion between optical and electrical signals
- A measurement server performs the time critical tasks such as signal filtering, control of the robot operation and fast movement interrupts.
- A probe alignment unit which improves the accuracy of the probe positioning
- A computer operating Windows XP
- DASY4 software
- Remote control with teach pendant and additional circuitry for robot safety such as warning lamps, etc.
- The SAM twin phantom
- A device holder
- Tissue simulating liquid
- Dipole for evaluating the proper functioning of the system

Some of the components are described in details in the following sub-sections.

5.1 DASY4 E-Field and H-Field Probe System

The HAC measurement is conducted with the dosimetric probe ER3DV6 and H3DV6 (manufactured by SPEAG). The probe is specially designed and calibrated. This probe has a built in optical surface detection system to prevent from collision with DUT.

5.1.1 E-Field Probe Specification

<ER3DV6>

Construction	One dipole parallel, two dipoles normal to probe axis Built-in shielding against static charges
Calibration	In air from 100 MHz to 3.0 GHz (absolute accuracy $\pm 6.0\%$, $k=2$)
Frequency	100 MHz to 6 GHz; Linearity: ± 2.0 dB (100 MHz to 3 GHz)
Directivity	± 0.2 dB in air (rotation around probe axis) ± 0.4 dB in air (rotation normal to probe axis)
Dynamic Range	2 V/m to 1000 V/m (M3 or better device readings fall well below diode compression point)
Linearity	± 0.2 dB
Dimensions	Overall length: 330 mm (Tip: 16 mm) Tip diameter: 8 mm (Body: 12 mm) Distance from probe tip to dipole centers: 2.5 mm



Fig. 5.2 E-field Free-space Probe

5.1.2 H-Field Probe Description

<H3DV6>

Construction	Three concentric loop sensors with 3.8 mm loop diameters Resistively loaded detector diodes for linear response Built-in shielding against static charges
Frequency	200 MHz to 3 GHz (absolute accuracy $\pm 6.0\%$, $k=2$); Output linearized
Directivity	± 0.25 dB (spherical isotropy error)
Dynamic Range	10 m A/m to 2 A/m at 1 GHz (M3 or better device readings fall well below diode compression point)
Dimensions	Overall length: 330 mm (Tip: 40 mm) Tip diameter: 6 mm (Body: 12 mm) Distance from probe tip to dipole centers: 3 mm
E-Field Interference	< 10% at 3 GHz (for plane wave)

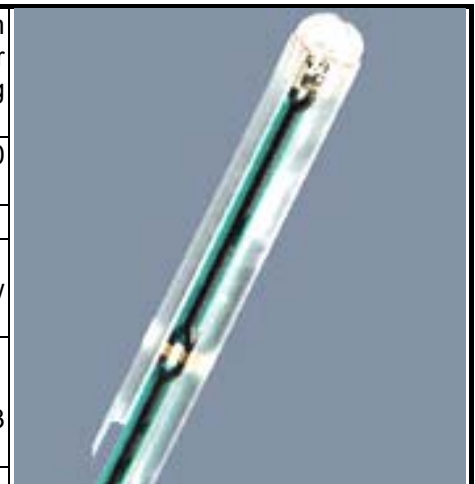


Fig. 5.3 H-field Free-space Probe

5.2.3 Probe Tip Description

HAC field measurements take place in the close near field with high gradients. Increasing the measuring distance from the source will generally decrease the measured field values (in case of the validation dipole approx. 10% per mm).

Magnetic field sensors are measuring the integral of the H-field across their sensor area surrounded by the loop. They are calibrated in a precise, homogeneous field. When measuring a gradient field, the result will be very close to the field in the center of the loop which is equivalent to the value of a homogeneous field equivalent to the center value. But it will be different from the field at the field at the border of the loop.

Consequently, two sensors with different loop diameters – both calibrated ideally – would give different results when measuring from the edge of the probe sensor elements. The behavior for electrically small E-field sensors is equivalent. See below for distance plots from a WD which show the conservative nature of field readings at the probe element center vs. measurements at the sensor end:

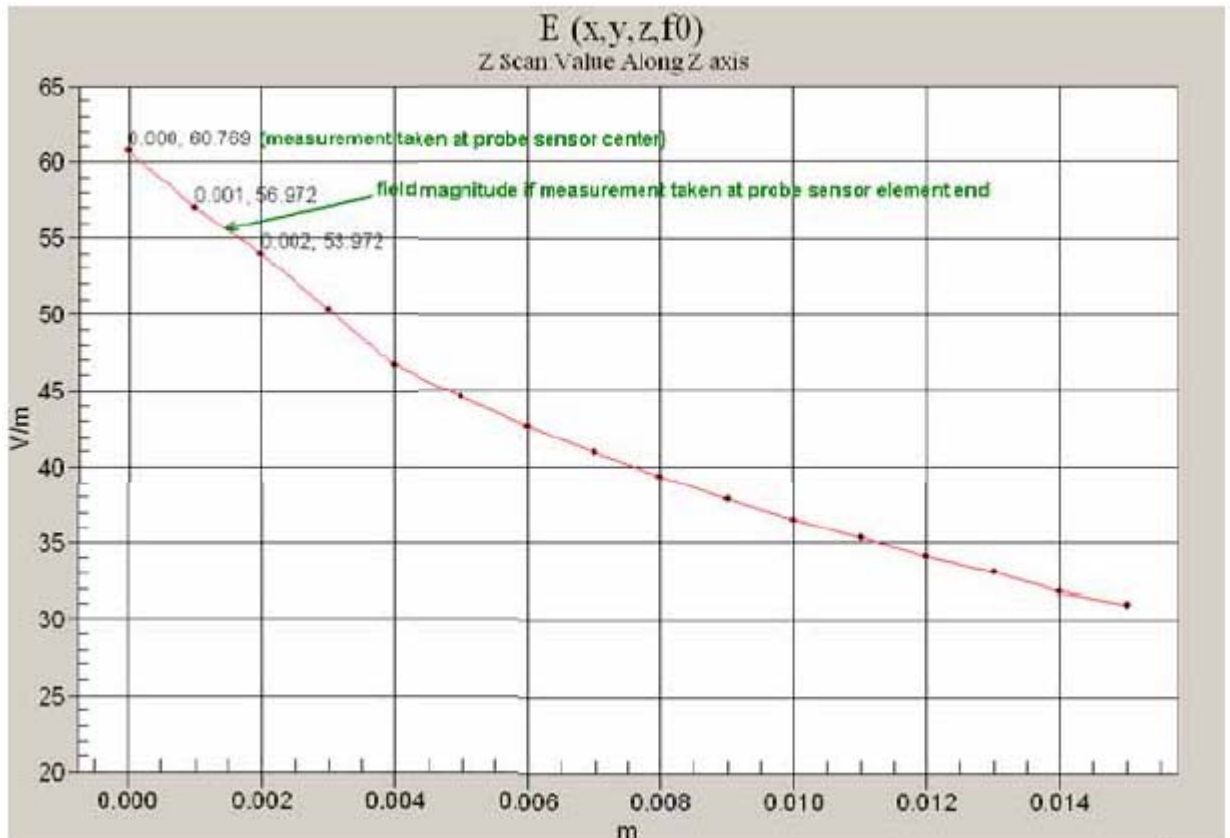


Fig. 5.4 Z-Axis Scan at maximum point above a typical wireless device for E-field

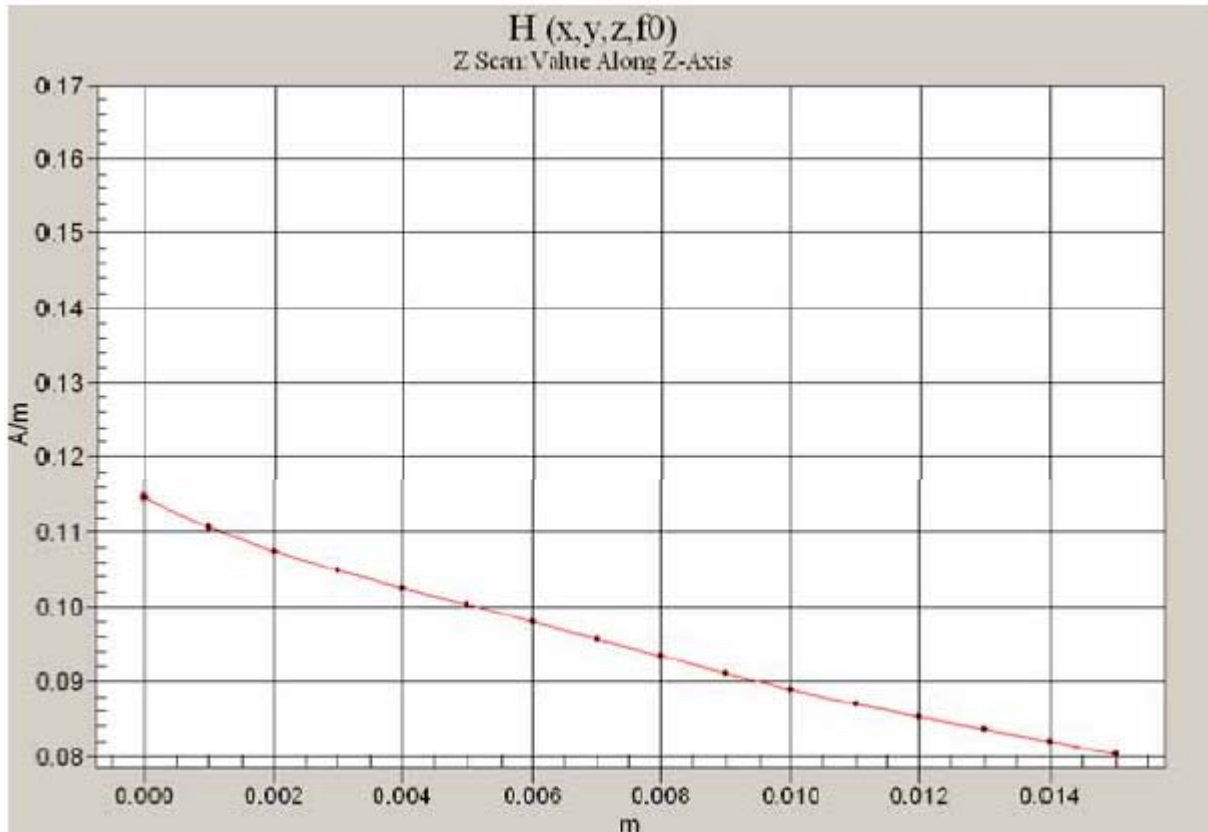


Fig. 5.5 Z-Axis Scan at maximum point above a typical wireless device for H-field

The magnetic field loops of the H3D probes are concentric, with the center 3mm from the tip for H3DV6.

Their radius is 1.9 mm.

The electric field probes have a more irregular internal geometry because it is physically not possible to have the 3 orthogonal sensors situated with the same center. The effect of the different sensor centers is accounted for in the HAC uncertainty budget ("sensor displacement"). Their geometric center is at 2.5 mm from the tip, and the element ends are 1.1 mm closer to the tip.

Where:

Peak Field = Peak field (in dB V/m or dB A/m)

Raw = Raw field measurement from the measurement system (in V/m or A/m).

PMF = Probe Modulation Factor (in Linear units). See Chapter 8 of test report.



5.2 DATA Acquisition Electronics (DAE)

The data acquisition electronics (DAE) consists of a highly sensitive electrometer-grade preamplifier with auto-zeroing, a channel and gain-switching multiplexer, a fast 16 bit AD-converter and a command decoder and control logic unit. Transmission to the measurement server is accomplished through an optical downlink for data and status information as well as an optical uplink for commands and the clock.

The mechanical probe mounting device includes two different sensor systems for frontal and sideways probe contacts. They are used for mechanical surface detection and probe collision detection.

The input impedance of the DAE is 200M Ohm; the inputs are symmetrical and floating. Common mode rejection is above 80dB.

5.3 Robot

The DASY4 system uses the high precision robots RX90BL type out of the newer series from Stäubli SA (France). For the 6-axis controller DASY4 system, the CS7MB robot controller version from Stäubli is used. The RX robot series have many features that are important for our application:

- High precision (repeatability 0.02 mm)
- High reliability (industrial design)
- Jerk-free straight movements
- Low ELF interference (the closed metallic construction shields against motor control fields)
- 6-axis controller

5.4 Measurement Server

The DASY4 measurement server is based on a PC/104 CPU board with
166 MHz CPU
32 MB chipset and
64 MB RAM.

Communication with
the DAE electronic box
the 16-bit AD-converter system for optical detection and digital I/O interface.

The measurement server performs all the real-time data evaluation for field measurements and surface detection, controls robot movements and handles safety operations.

5.5 Phone Positioner

The phone positioner shown in Fig. 5.8 is used to adjust DUT to the suitable position.



Fig. 5.6 Phone Positioner

5.6 Test Arch Phantom

Construction : Enables easy and well defined positioning of the phone and validation dipoles as well as simple teaching of the robot.

Dimensions : 370 x 370 x 370 mm

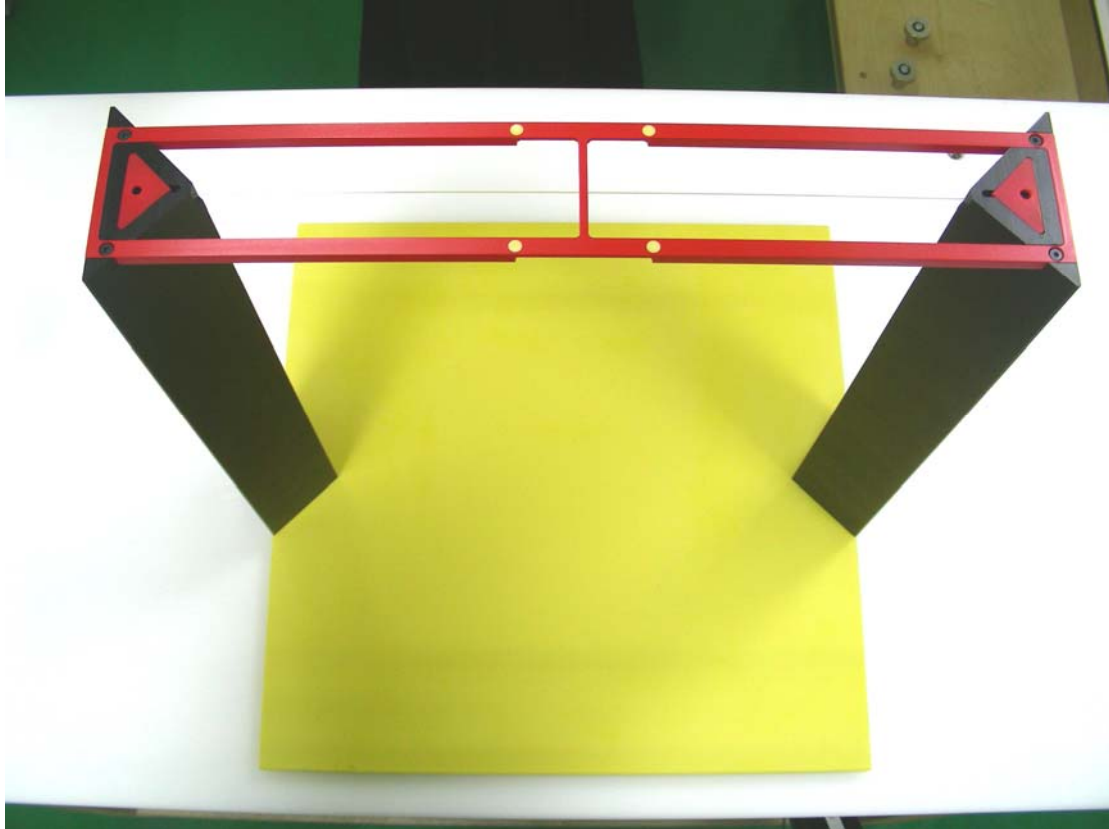


Fig. 5.7 Test Arch Phantom



5.7 Data Storage and Evaluation

5.7.1 Data Storage

The DASY4 software stores the assessed data from the data acquisition electronics as raw data (in microvolt readings from the probe sensors), together with all the necessary software parameters for the data evaluation (probe calibration data, and device frequency and modulation data) in measurement files with the extension .DA4. The post-processing software evaluates the desired unit and format for output each time the data is visualized or exported. This allows verification of the complete software setup even after the measurement and allows correction of erroneous parameter settings.

5.7.2 Data Evaluation

The DASY4 post-processing software (SEMCAD) automatically executes the following procedures to calculate the field units from the microvolt readings at the probe connector. The parameters used in the evaluation are stored in the configuration modules of the software :

- Probe parameters :**
 - Sensitivity Norm_j, a_ρ, a_{i1}, a_{i2}
 - Conversion factor ConvF_j
 - Diode compression point dcp_j
- Device parameters :**
 - Frequency f
 - Crest factor cf
- Media parameters :**
 - Conductivity σ
 - Density ρ

These parameters must be set correctly in the software. They can be found in the component documents or they can be imported into the software from the configuration files issued for the DASY components. In the direct measuring mode of the multimeter option, the parameters of the actual system setup are used. In the scan visualization and export modes, the parameters stored in the corresponding document files are used.

The first step of the evaluation is a linearization of the filtered input signal to account for the compression characteristics of the detector diode. The compensation depends on the input signal, the diode type and the DC-transmission factor from the diode to the evaluation electronics. If the exciting field is pulsed, the crest factor of the signal must be known to correctly compensate for peak power. The formula for each channel can be given as :

Vi = Ui + Ui^2 * cf / dcp_i

- with **Vi** = compensated signal of channel i (i = x, y, z)
- Ui** = input signal of channel i (i = x, y, z)
- cf** = crest factor of exciting field (DASY parameter)
- dcp_j** = diode compression point (DASY parameter)

From the compensated input signals, the primary field data for each channel can be evaluated :

E-field probes : $E_i = \sqrt{\frac{V_i}{Norm_i ConvF}}$

H-field probes : $H_i = \sqrt{V_i \frac{a_{i0} + a_{i1}f + a_{i2}f^2}{f}}$

With V_i = compensated signal of channel i ($i = x, y, z$)
 $Norm_i$ = sensor sensitivity of channel i ($i = x, y, z$)
 $\mu V / (V/m)^2$ for E-field Probes
 $ConvF$ = sensitivity enhancement in solution
 a_{ij} = sensor sensitivity factors for H-field probes
 f = carrier frequency [GHz]
 E_i = electric field strength of channel i in V/m
 H_i = magnetic field strength of channel i in A/m

The RSS value of the field components gives the total field strength (Hermitian magnitude) :

$$E_{tot} = \sqrt{E_x^2 + E_y^2 + E_z^2}$$

The primary field data are used to calculate the derived field units.

The measurement/integration time per point, as specified by the system manufacturer is >500 ms.

The signal response time is evaluated as the time required by the system to reach 90% of the expected final value after an on/off switch of the power source with an integration time of 500 ms and a probe response time of <5 ms. In the current implementation, DASY4 waits longer than 100 ms after having reached the grid point before starting a measurement, i.e., the response time uncertainty is negligible.

If the device under test does not emit a CW signal, the integration time applied to measure the electric field at a specific point may introduce additional uncertainties due to the discretization. The tolerances for the different systems had the worst-case of 2.6%.



5.8 Test Equipment List

Manufacturer	Name of Equipment	Type/Model	Serial Number	Calibration	
				Last Cal.	Due Date
SPEAG	Isotropic E-Filed Probe	ER3DV6	2256	Aug. 22, 2008	Aug. 21, 2009
SPEAG	Isotropic H-Filed Probe	H3DV6	6076	Aug. 22, 2008	Aug. 21, 2009
SPEAG	Audio Magnetic 1D Field Probe	AM1DV2	1038	Jan. 12, 2009	Jan. 11, 2010
SPEAG	Audio Magnetic Calibration Coil	AMCC	1049	NCR	NCR
SPEAG	Audio Measuring Instrument	AMMI	1041	NCR	NCR
SPEAG	835MHz Calibration Dipole	CD835V3	1045	Sep. 25, 2007	Sep. 24, 2009
SPEAG	1880MHz Calibration Dipole	CD1880V3	1038	Sep. 27, 2007	Sep. 26, 2009
SPEAG	2450MHz Calibration Dipole	CD2450V3	1039	Sep. 27, 2007	Sep. 26, 2009
SPEAG	Data Acquisition Electronics	DAE3	577	Nov. 12, 2008	Nov. 11, 2009
SPEAG	Data Acquisition Electronics	DAE4	778	Sep. 22, 2008	Sep. 21, 2009
SPEAG	Test Arch Phantom	N/A	N/A	NCR	NCR
SPEAG	Phone Positoiner	N/A	N/A	NCR	NCR
Agilent	Wireless Communication Test Set	E5515C	MY48360820	Dec. 15, 2008	Dec. 14, 2009
R&S	Universal Radio Communication Tester	CMU200	105934	Nov. 11, 2008	Nov. 10, 2009
Agilent	Dual Directional Coupler	778D	50422	NCR	NCR
AR	Power Amplifier	5S1G4M2	0328767	NCR	NCR
R&S	Power Meter	NRVD	101394	Oct. 20, 2008	Oct. 19, 2009
R&S	Power Sensor	NRV-Z1	100130	Oct. 20, 2008	Oct. 19, 2009

Table 5.1 Test Equipment List



6. Uncertainty Assessment

The component of uncertainty may generally be categorized according to the methods used to evaluate them. The evaluation of uncertainty by the statistical analysis of a series of observations is termed a Type A evaluation of uncertainty. The evaluation of uncertainty by means other than the statistical analysis of a series of observation is termed a Type B evaluation of uncertainty. Each component of uncertainty, however evaluated, is represented by an estimated standard deviation, termed standard uncertainty, which is determined by the positive square root of the estimated variance.

A Type A evaluation of standard uncertainty may be based on any valid statistical method for treating data. This includes calculating the standard deviation of the mean of a series of independent observations; using the method of least squares to fit a curve to the data in order to estimate the parameter of the curve and their standard deviations; or carrying out an analysis of variance in order to identify and quantify random effects in certain kinds of measurement.

A type B evaluation of standard uncertainty is typically based on scientific judgment using all of the relevant information available. These may include previous measurement data, experience and knowledge of the behavior and properties of relevant materials and instruments, manufacture’s specification, data provided in calibration reports and uncertainties assigned to reference data taken from handbooks. Broadly speaking, the uncertainty is either obtained from an outdoor source or obtained from an assumed distribution, such as the normal distribution, rectangular or triangular distributions indicated in Table 6.1.

Uncertainty Distributions	Normal	Rectangular	Triangular	U-shape
Multiplying factor^(a)	1/k ^(b)	1/√3	1/√6	1/√2

(a) standard uncertainty is determined as the product of the multiplying factor and the estimated range of variations in the measured quantity

(b) κ is the coverage factor

Table 6.1 Multiplying Factors for Various Distributions

The combined standard uncertainty of the measurement result represents the estimated standard deviation of the result. It is obtained by combining the individual standard uncertainties of both Type A and Type B evaluation using the usual “root-sum-squares” (RSS) methods of combining standard deviations by taking the positive square root of the estimated variances.

Expanded uncertainty is a measure of uncertainty that defines an interval about the measurement result within which the measured value is confidently believed to lie. It is obtained by multiplying the combined standard uncertainty by a coverage factor. Typically, the coverage factor ranges from 2 to 3. Using a coverage factor allows the true value of a measured quantity to be specified with a defined probability within the specified uncertainty range. For purpose of this document, a coverage factor two is used, which corresponds to confidence interval of about 95 %. The DASY4 uncertainty Budget is showed in Table 6.2.



Error Description	Uncertainty Value (± %)	Probability Distribution	Divisor	(Ci) E	(Ci) H	Std. Unc. E	Std. Unc. H
Measurement System							
Probe Calibration	± 5.1	Normal	1	1	1	± 5.1	± 5.1
Axial Isotropy	± 4.7	Rectangular	√3	1	1	± 2.7	± 2.7
Sensor Displacement	± 16.5	Rectangular	√3	1	0.145	± 9.5	± 1.4
Boundary Effect	± 2.4	Rectangular	√3	1	1	± 1.4	± 1.4
Linearity	± 4.7	Rectangular	√3	1	1	± 2.7	± 2.7
Scaling to Peak Envelope Power	± 2.0	Rectangular	√3	1	1	± 1.2	± 1.2
System Detection Limit	± 1.0	Rectangular	√3	1	1	± 0.6	± 0.6
Readout Electronics	± 0.3	Normal	1	1	1	± 0.3	± 0.3
Response Time	± 0.8	Rectangular	√3	1	1	± 0.5	± 0.5
Integration Time	± 2.6	Rectangular	√3	1	1	± 1.5	± 1.5
RF Ambient Conditions	± 3.0	Rectangular	√3	1	1	± 1.7	± 1.7
RF Reflections	± 12.0	Rectangular	√3	1	1	± 6.9	± 6.9
Probe Positioner	± 1.2	Rectangular	√3	1	0.67	± 0.7	± 0.5
Probe Positioning	± 4.7	Rectangular	√3	1	0.67	± 2.7	± 1.8
Extrap. and Interpolation	± 1.0	Rectangular	√3	1	1	± 0.6	± 0.6
Test Sample Related							
Device Positioning Vertical	± 4.7	Rectangular	√3	1	0.67	± 2.7	± 1.8
Device Positioning Lateral	± 1.0	Rectangular	√3	1	1	± 0.6	± 0.6
Device Holder and Phantom	± 2.4	Rectangular	√3	1	1	± 1.4	± 1.4
Power Drift	± 5.0	Rectangular	√3	1	1	± 2.9	± 2.9
Phantom and Setup Related							
Phantom Thickness	± 2.4	Rectangular	√3	1	0.67	± 1.4	± 0.9
Combined Standard Uncertainty						± 14.7	± 10.9
Coverage Factor for 95 %		K=2					
Expanded uncertainty (Coverage factor = 2)						± 29.4	± 21.8

Table 6.2 Uncertainty Budget of DASY4

7. HAC RF Emission Measurement Evaluation

Each DASY4 system is equipped with one or more system validation kits. These units, together with the predefined measurement procedures within the DASY4 software, enable the user to conduct the system performance check and system validation. System validation kit includes a dipole, tripod holder to fix it underneath the test Arch and a corresponding distance holder.

7.1 Purpose of System Performance Check

The system performance check verifies that the system operates within its specifications. System and operator errors can be detected and corrected. It is recommended that the system performance check be performed prior to any usage of the system in order to guarantee reproducible results. The system performance check uses normal HAC measurements in a simplified setup with a well characterized source. This setup was selected to give a high sensitivity to all parameters that might fail or vary over time. The system check does not intend to replace the calibration of the components, but indicates situations where the system uncertainty is exceeded due to drift or failure.

7.2 System Setup

In the simplified setup for system evaluation, the DUT is replaced by a calibrated dipole and the power source is replaced by a continuous wave which comes from a signal generator at frequency 835 and 1880 MHz. The calibrated dipole must be placed beneath the flat phantom section of the ARC with the correct distance holder. The equipment setup is shown below:

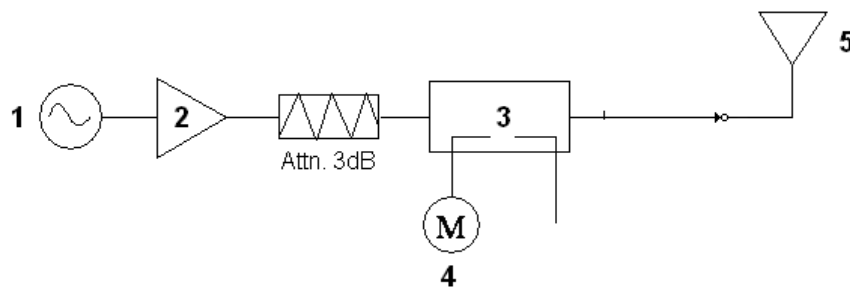


Fig. 7.1 System Setup of System Evaluation

1. Signal Generator
2. Amplifier
3. Directional Coupler
4. Power Meter
5. 835 MHz or 1900 MHz Dipole

The output power on dipole port must be calibrated to 20dBm (100mW) before dipole is connected.

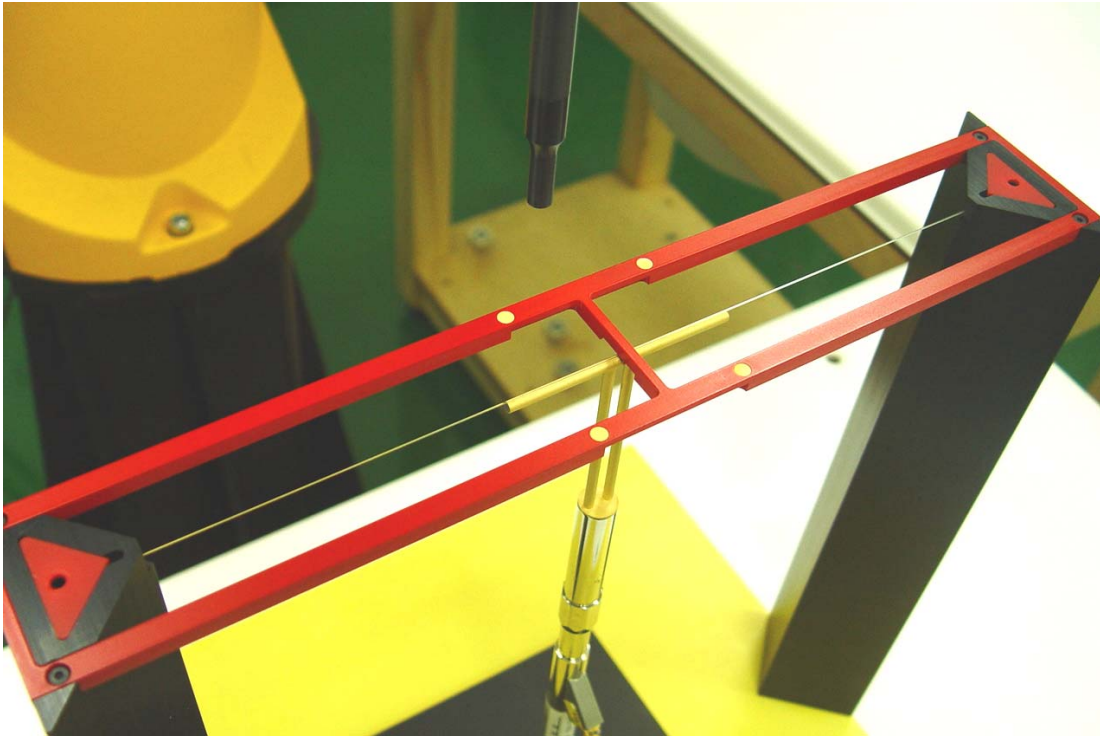


Fig 7.2 Dipole Setup



7.3 Validation Results

Frequency (MHz)	Input Power (dBm)	E-field Result (V/m)	Target Field (V/m)	Deviation (%)	Measurement Date
835	20.0	171.30	167.1	2.51	Jan. 14, 2009
	20.0	174.05	167.1	4.16	Mar. 07, 2009
1880	20.0	146.40	138.9	5.40	Jan. 14, 2009
	20.0	148.70	138.9	7.06	Mar. 07, 2009
Frequency (MHz)	Input Power (dBm)	H-field Result (A/m)	Target Field (A/m)	Deviation (%)	Measurement Date
835	20.0	0.520	0.453	14.79	Jan. 15, 2009
	20.0	0.459	0.453	1.32	Mar. 07, 2009
1880	20.0	0.548	0.471	16.35	Jan. 15, 2009
	20.0	0.497	0.471	5.52	Mar. 07, 2009

Table 7.1 System Validation

Remark: Deviation = ((E or H-field Result) - (Target field)) / (Target field) * 100%

The table above indicates the system performance check can meet the variation criterion, ±25%.

8. RF Field Probe Modulation Factor

A calibration shall be made of the modulation response of the probe and its instrumentation chain. This calibration shall be performed with the field probe, attached to the instrumentation that is to be used with it during the measurement. The response of the probe system to a CW field at the frequency(s) of interest is compared to its response to a modulated signal with equal peak amplitude. The field level of the test signals shall be more than 10 dB above the ambient level and the noise floor of the instrumentation being used. The ratio of the CW reading to that taken with a modulated field shall be applied to the readings taken of modulated fields of the specified type.

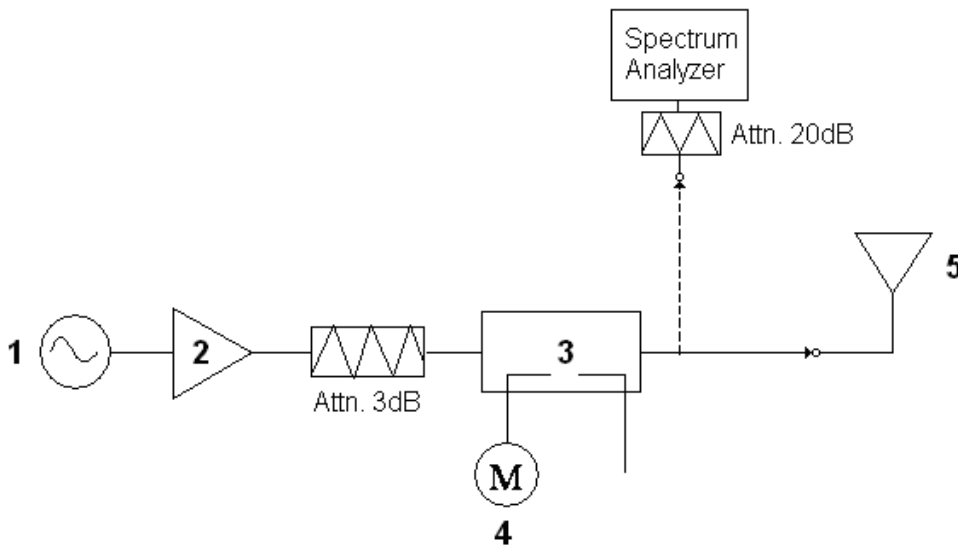


Fig. 8.1 System Calibration

This was done using the following procedure:

1. Fixing the probe in a set location relative to a field generating device.
2. Illuminate the probe with a CW signal at the intended measurement frequency.
3. Record the reading of the probe measurement system of the CW signal.
4. Determine the level of the CW signal being used to drive the field generating device.
5. Substitute a signal using the same modulation as that used by the intended WD for the CW signal.
6. Set the peak amplitude during transmission of the modulated signal to equal the amplitude of the CW signal.
7. Record the reading of the probe measurement system of the modulated signal.
8. The ratio of the CW to modulated signal reading is the modulation factor.
9. Repeat 2~8 steps at intended measurement frequency for both E and H field probe.

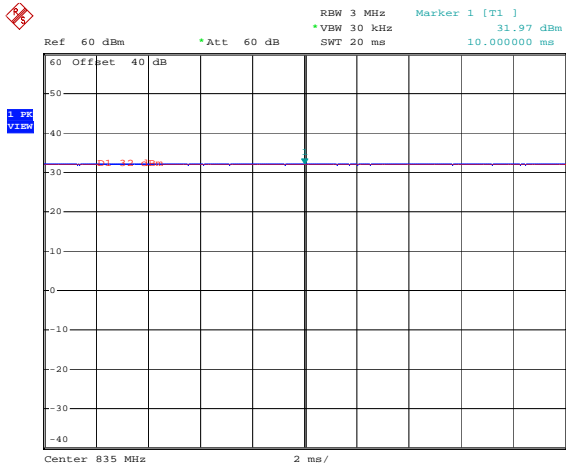


PMF Measurement Summary:

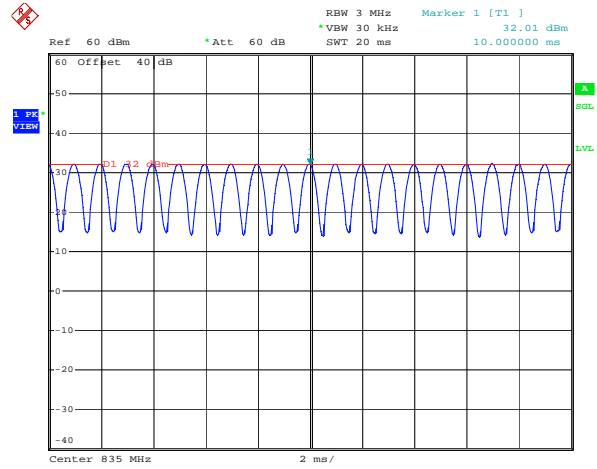
Frequency	Functions	E-field	H-field	PMF	
		V/m	A/m	E-field	H-field
835MHz	CW	661	1.796	-	-
835MHz	AM	416	1.45	1.59	1.24
835MHz	GSM	251	1.197	2.63	1.50
1880MHz	CW	442.1	1.468	-	-
1880MHz	AM	271.6	1.166	1.63	1.26
1880MHz	GSM	163.2	1.063	2.71	1.38

Frequency	Functions	E-field	H-field	PMF	
		V/m	A/m	E-field	H-field
835MHz	CW	277	0.572	-	-
835MHz	AM	186.4	0.411	1.486	1.392
835MHz	WCDMA	282.3	0.691	0.981	0.828
1880MHz	CW	215.4	0.707	-	-
1880MHz	AM	150.5	0.603	1.431	1.172
1880MHz	WCDMA	220.4	1.348	0.977	0.524

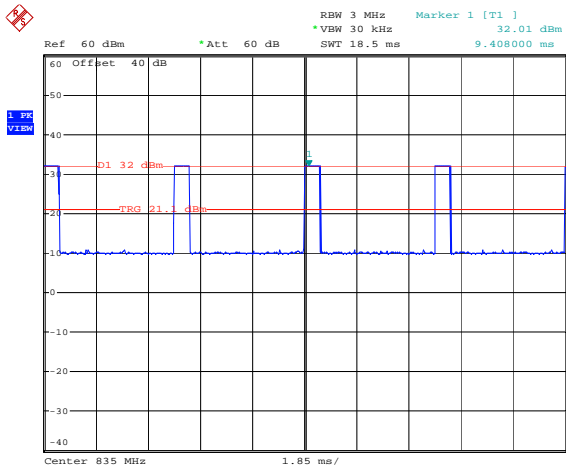
Zero span Spectrum Plots for RF Field Probe Modulation Factor



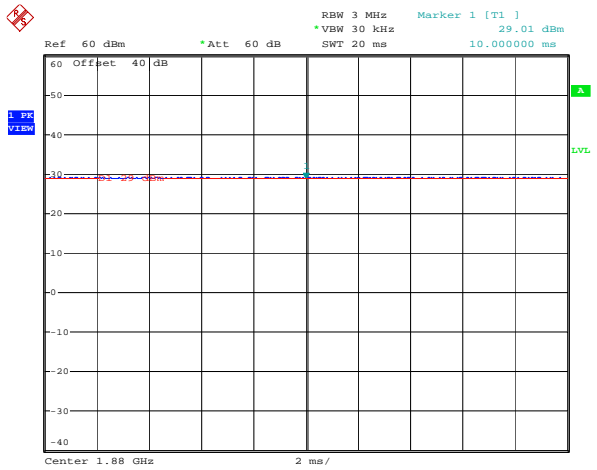
835MHz - CW



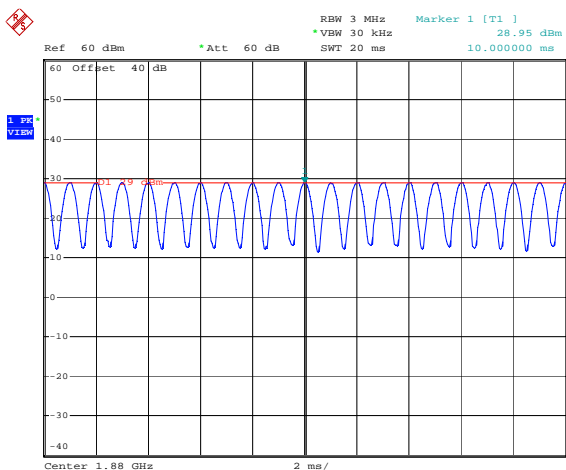
835MHz - 80% AM



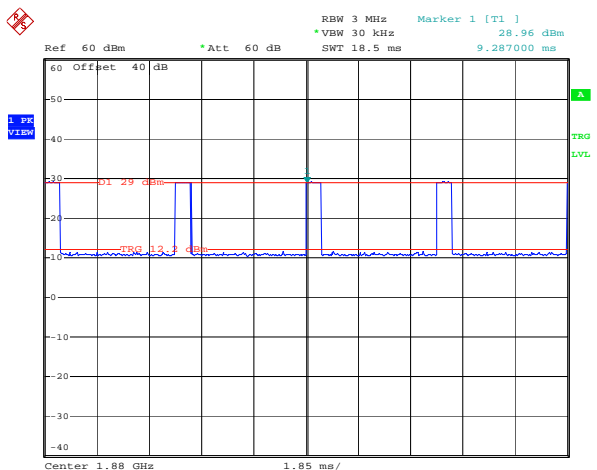
835MHz - GSM



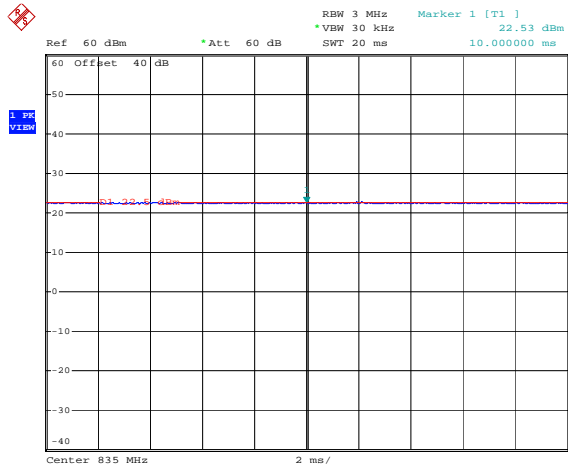
1880MHz - CW



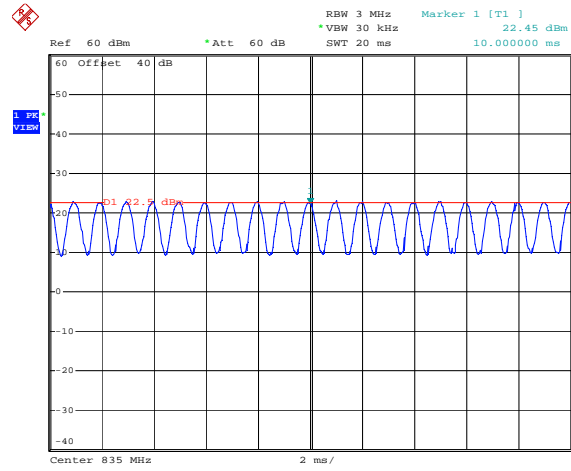
1880MHz - 80% AM



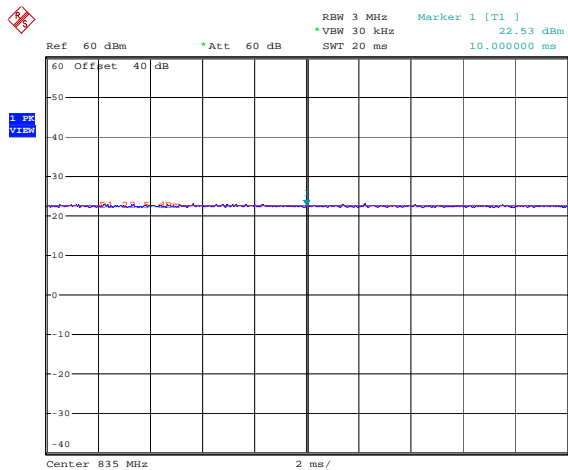
1880MHz - GSM



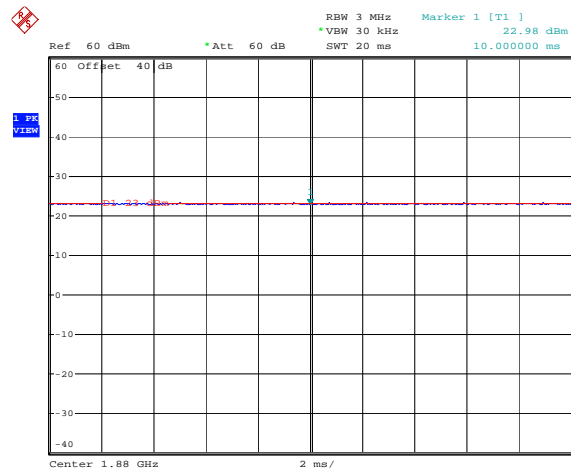
835MHz - CW



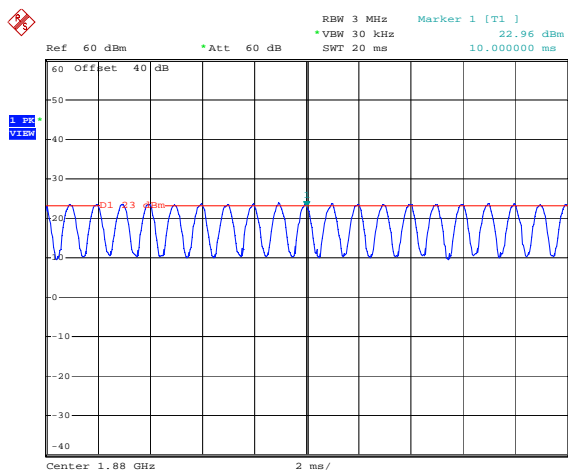
835MHz - 80% AM



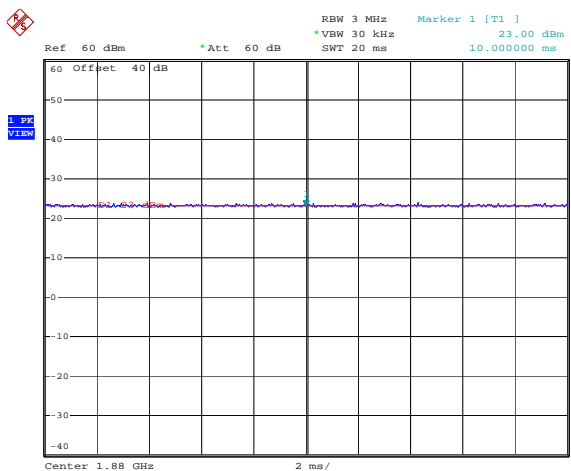
835MHz - WCDMA



1880MHz - CW



1880MHz - 80% AM



1880MHz - WCDMA

9. Description for DUT Testing Position

The DUT was put on device holder and adjusted to the accurate and reliable position. (Please refer to Appendix E for the Setup photographs.)

Fig. 9.1 illustrate the references and reference plane that shall be used in a typical DUT emissions measurement. The principle of this section is applied to DUT with similar geometry.

- The grid is 5 cm by 5 cm area that is divided into 9 evenly sized blocks or sub-grids.
- The grid is centered on the audio frequency output transducer of the DUT.
- The grid is in a reference plane, which is defined as the planar area that contains the highest point in the area of the phone that normally rests against the user's ear. It is parallel to the centerline of the receiver area of the phone and is defined by the points of the receiver-end of the DUT handset, which, in normal handset use, rest against the ear.
- The measurement plane is parallel to, and 15 mm in front of, the reference plane.



Fig 9.1 A typical DUT reference and plane for HAC measurements

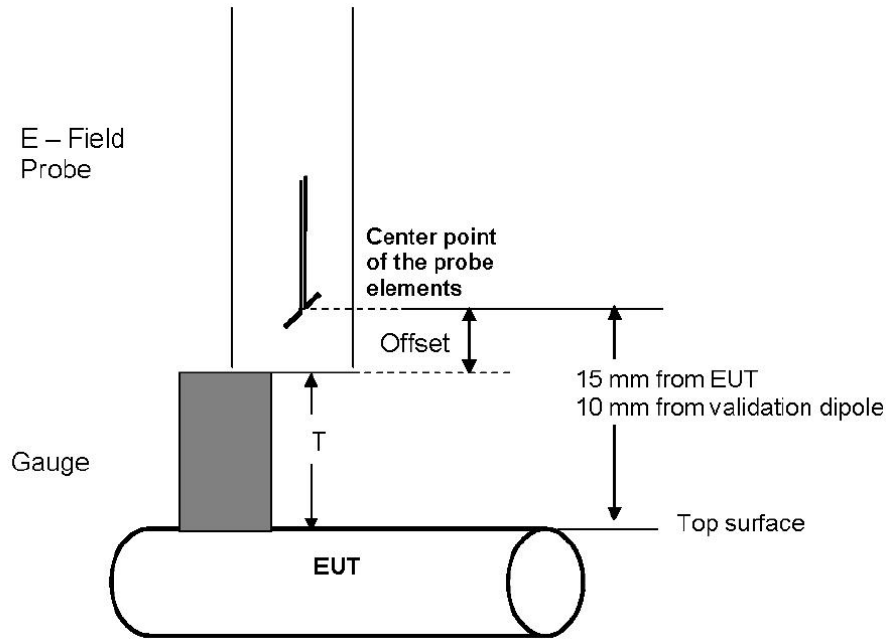


Fig. 9.2 Gauge block with E-field probe

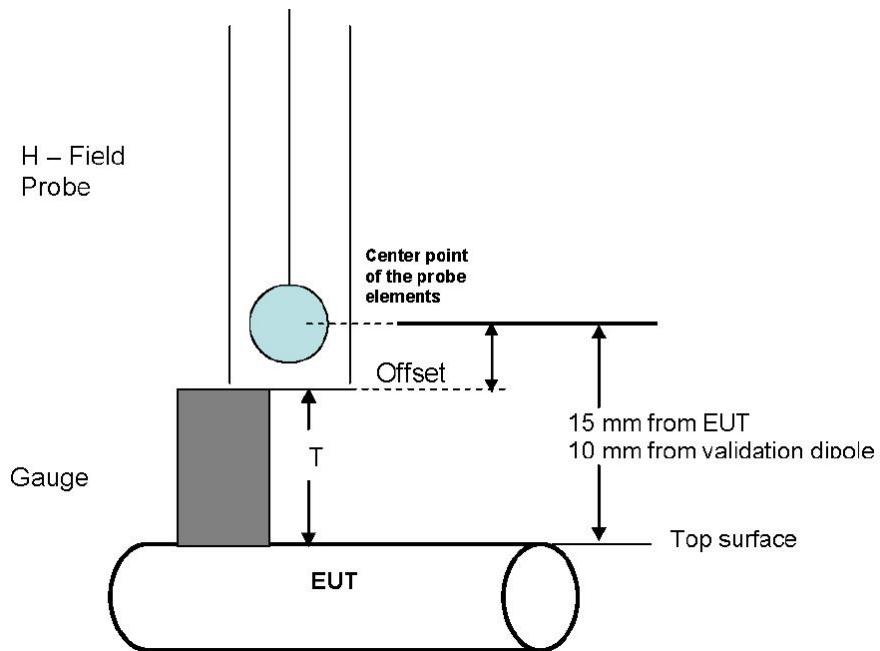


Fig. 9.3 Gauge block with H-field probe



10. RF Emissions Test Procedure

The following illustrate a typical RF emissions test scan over a wireless communications device:

1. Proper operation of the field probe, probe measurement system, other instrumentation, and the positioning system was confirmed.
2. DUT is positioned in its intended test position, acoustic output point of the device perpendicular to the field probe.
3. The DUT operation for maximum rated RF output power was configured and confirmed with the base station simulator, at the test channel and other normal operating parameters as intended for the test. The battery was ensured to be fully charged before each test.
4. The center sub-grid was centered over the center of the acoustic output (also audio band magnetic output, if applicable). The DUT audio output was positioned tangent (as physically possible) to the measurement plane.
5. A surface calibration was performed before each setup change to ensure repeatable spacing and proper maintenance of the measurement plane using the test Arch.
6. The measurement system measured the field strength at the reference location.
7. Measurements at 5 mm increments in the 5 x 5 cm region were performed and recorded. A 360° rotation about the azimuth axis at the maximum interpolated position was measured. For the worst-case condition, the peak reading from this rotation was used in re-evaluating the HAC category.
8. The system performed a drift evaluation by measuring the field at the reference location.
9. Steps 1 ~ 8 were done for both the E and H-Field measurements.



11. HAC RF Emission Test Results

11.1 Conducted Power

Conducted Power (dBm)							
Mode	Band Channel	GSM 850			GSM 1900		
		128	189	251	512	661	810
GSM		32.02	31.95	31.73	28.99	29.15	29.21

Conducted Power (dBm)							
Mode	Band Channel	WCDMA Band V			WCDMA Band II		
		4132	4182	4233	9262	9400	9538
12.2K		22.07	22.69	22.02	23.09	22.70	22.58

11.2 E-Field Emission

Mode	Battery	Channel	Frequency (MHz)	Modulation Type	PMF	Peak Field (V/m)	M-Rating
GSM850	1	128	824.2	GMSK	2.63	90.2	M4
	1	189	836.4	GMSK	2.63	108.4	M4
	1	251	848.8	GMSK	2.63	132.8	M4
	2	251	848.8	GMSK	2.63	149.1	M4
GSM1900	1	512	1850.2	GMSK	2.71	66.8	M3
	1	661	1880.0	GMSK	2.71	69.9	M3
	1	810	1909.8	GMSK	2.71	69.0	M3
	2	661	1880.0	GMSK	2.71	74.0	M3
WCDMA Band V	1	4132	826.4	QPSK	0.981	33.0	M4
	1	4182	836.4	QPSK	0.981	38.9	M4
	1	4233	846.6	QPSK	0.981	45.0	M4
	2	4233	846.6	QPSK	0.981	51.8	M4
WCDMA Band II	1	9262	1852.4	QPSK	0.977	36.8	M4
	1	9400	1880.0	QPSK	0.977	33.8	M4
	1	9538	1907.6	QPSK	0.977	30.0	M4
	2	9262	1852.4	QPSK	0.977	37.7	M4

**11.3H-Field Emission**

Mode	Battery	Channel	Frequency (MHz)	Modulation Type	PMF	Peak Field (A/m)	M-Rating
GSM850	1	128	824.2	GMSK	1.50	0.132	M4
	1	189	836.4	GMSK	1.50	0.159	M4
	1	251	848.8	GMSK	1.50	0.168	M4
	2	251	848.8	GMSK	1.50	0.151	M4
GSM1900	1	512	1850.2	GMSK	1.38	0.140	M4
	1	661	1880.0	GMSK	1.38	0.143	M3
	1	810	1909.8	GMSK	1.38	0.144	M3
	2	810	1909.8	GMSK	1.38	0.148	M3
WCDMA Band V	1	4132	826.4	QPSK	0.828	0.071	M4
	1	4182	836.4	QPSK	0.828	0.082	M4
	1	4233	846.6	QPSK	0.828	0.086	M4
	2	4233	846.6	QPSK	0.828	0.077	M4
WCDMA Band II	1	9262	1852.4	QPSK	0.524	0.075	M4
	1	9400	1880.0	QPSK	0.524	0.067	M4
	1	9538	1907.6	QPSK	0.524	0.060	M4
	2	9262	1852.4	QPSK	0.524	0.068	M4

Remark:

1. The output power is adjusted to maximum level during RF Emission testing.
2. Test Engineer : Eric Huang, Robert Liu, and Gordon Lin



12. References

- [1] ANSI C63.19-2007, "American National Standard for Methods of Measurement of Compatibility between Wireless Communications Devices and Hearing Aids"
- [2] DASY4 System Handbook



Appendix A - System Performance Check Data

Test Laboratory: Sporton International Inc. SAR/HAC Testing Lab

Date: 2009/1/14

HAC_E_Dipole_835_20090114

DUT: HAC-Dipole 835 MHz

Communication System: CW; Frequency: 835 MHz; Duty Cycle: 1:1
Medium: Air Medium parameters used: $\sigma = 0$ mho/m, $\epsilon_r = 1$; $\rho = 1000$ kg/m³
Ambient Temperature : 22.5 °C

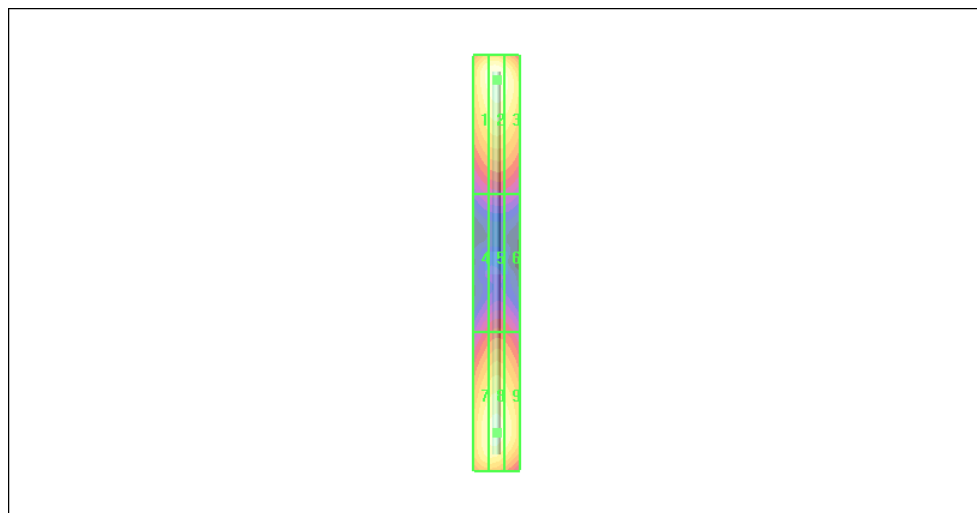
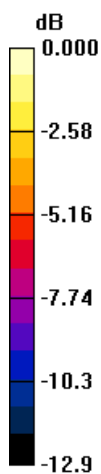
DASY4 Configuration:

- Probe: ER3DV6 - SN2256; ConvF(1, 1, 1); Calibrated: 2008/8/22
- Sensor-Surface: (Fix Surface)
- Electronics: DAE3 Sn577; Calibrated: 2008/11/12
- Phantom: HAC Test Arch 4.6; Type: SD HAC P01 BA;
- Measurement SW: DASY4, V4.7 Build 71; Postprocessing SW: SEMCAD, V1.8 Build 184

E Scan - ER probe center 10mm above CD835 Dipole/Hearing Aid Compatibility Test (41x361x1): Measurement grid:
 dx=5mm, dy=5mm
 Probe Modulation Factor = 1.00
 Device Reference Point: 0.000, 0.000, 353.7 mm
 Reference Value = 58.6 V/m; Power Drift = -0.012 dB
Average value of Total = (175.9 + 166.7) / 2 = 171.3

Peak E-field in V/m

Grid 1 167.7 M4	Grid 2 175.9 M4	Grid 3 167.9 M4
Grid 4 86.5 M4	Grid 5 92.3 M4	Grid 6 89.3 M4
Grid 7 160.9 M4	Grid 8 166.7 M4	Grid 9 159.4 M4



0 dB = 175.9V/m



Test Laboratory: Sporton International Inc. SAR/HAC Testing Lab

Date: 2009/3/7

HAC_E_Dipole_835_20090307

DUT: HAC-Dipole 835 MHz

Communication System: CW; Frequency: 835 MHz; Duty Cycle: 1:1
Medium: Air Medium parameters used: sigma = 0 mho/m, epsilon_r = 1; rho = 1000 kg/m^3
Ambient Temperature : 22.3 C

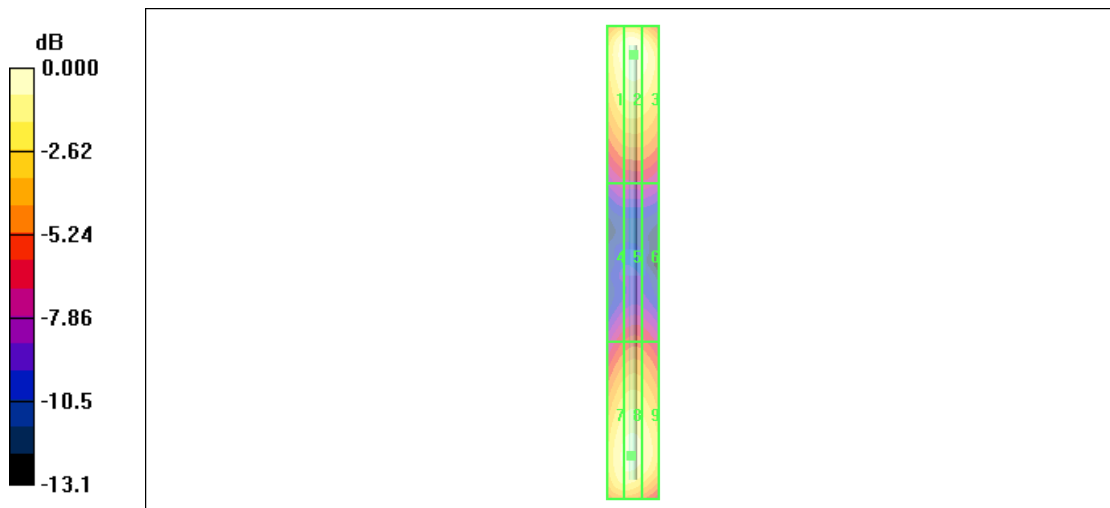
DASY4 Configuration:

- Probe: ER3DV6 - SN2256; ConvF(1, 1, 1); Calibrated: 2008/8/22
- Sensor-Surface: (Fix Surface)
- Electronics: DAE3 Sn577; Calibrated: 2008/11/12
- Phantom: HAC Test Arch with AMCC; Type: SD HAC P01 BA;
- Measurement SW: DASY4, V4.7 Build 80; Postprocessing SW: SEMCAD, V1.8 Build 186

E Scan - ER probe center 10mm above CD835 Dipole/Hearing Aid Compatibility Test (41x361x1): Measurement grid:
dx=5mm, dy=5mm
Probe Modulation Factor = 1.00
Device Reference Point: 0.000, 0.000, -6.30 mm
Reference Value = 58.6 V/m; Power Drift = -0.011 dB
Average value of Total = (178.7 + 169.4) / 2 = 174.05

Peak E-field in V/m

Table with 3 columns (Grid 1-3, Grid 4-6, Grid 7-9) and 3 rows of peak E-field values in M4.



0 dB = 178.7V/m



Test Laboratory: Sporton International Inc. SAR/HAC Testing Lab

Date: 2009/1/14

HAC_E_Dipole_1880_20090114

DUT: HAC Dipole 1880 MHz

Communication System: CW; Frequency: 1880 MHz; Duty Cycle: 1:1
Medium: Air Medium parameters used: sigma = 0 mho/m, epsilon_r = 1; rho = 1000 kg/m^3
Ambient Temperature : 22.7 °C

DASY4 Configuration:

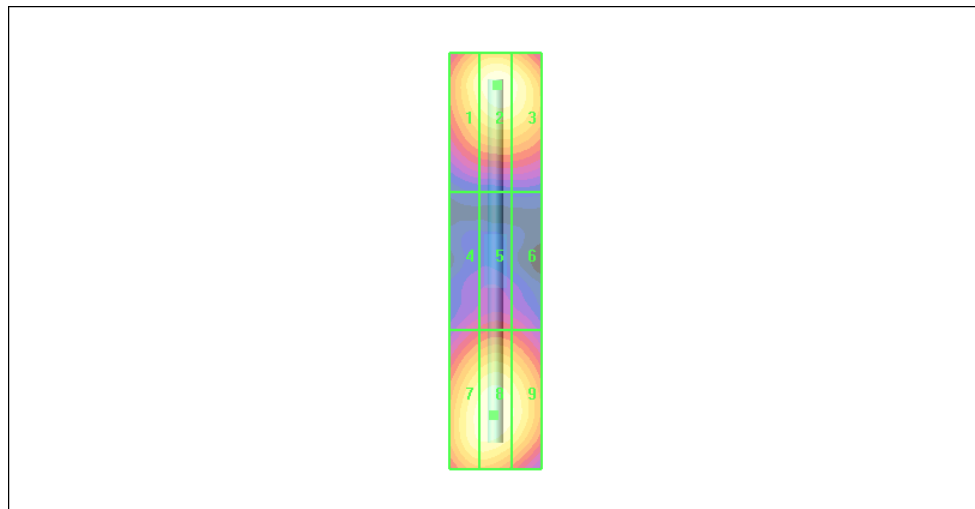
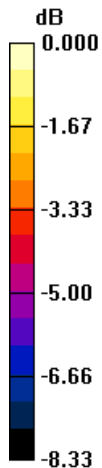
- Probe: ER3DV6 - SN2256; ConvF(1, 1, 1); Calibrated: 2008/8/22
- Sensor-Surface: (Fix Surface)
- Electronics: DAE3 Sn577; Calibrated: 2008/11/12
- Phantom: HAC Test Arch 4.6; Type: SD HAC P01 BA;
- Measurement SW: DASY4, V4.7 Build 71; Postprocessing SW: SEMCAD, V1.8 Build 184

E Scan - ER probe center 10mm above CD1880 Dipole/Hearing Aid Compatibility Test (41x181x1): Measurement

grid: dx=5mm, dy=5mm
Probe Modulation Factor = 1.00
Device Reference Point: 0.000, 0.000, 353.7 mm
Reference Value = 71.6 V/m; Power Drift = 0.004 dB
Average value of Total = (146.2 + 146.6) / 2 = 146.4

Peak E-field in V/m

Table with 3 columns (Grid 1-3, Grid 4-6, Grid 7-9) and 3 rows of peak E-field values in M2 and M3.



0 dB = 146.6V/m



Test Laboratory: Sporton International Inc. SAR/HAC Testing Lab

Date: 2009/3/7

HAC_E_Dipole_1880_20090307

DUT: HAC Dipole 1880 MHz

Communication System: CW; Frequency: 1880 MHz; Duty Cycle: 1:1
Medium: Air Medium parameters used: sigma = 0 mho/m, epsilon_r = 1; rho = 1000 kg/m^3
Ambient Temperature : 22.2 C

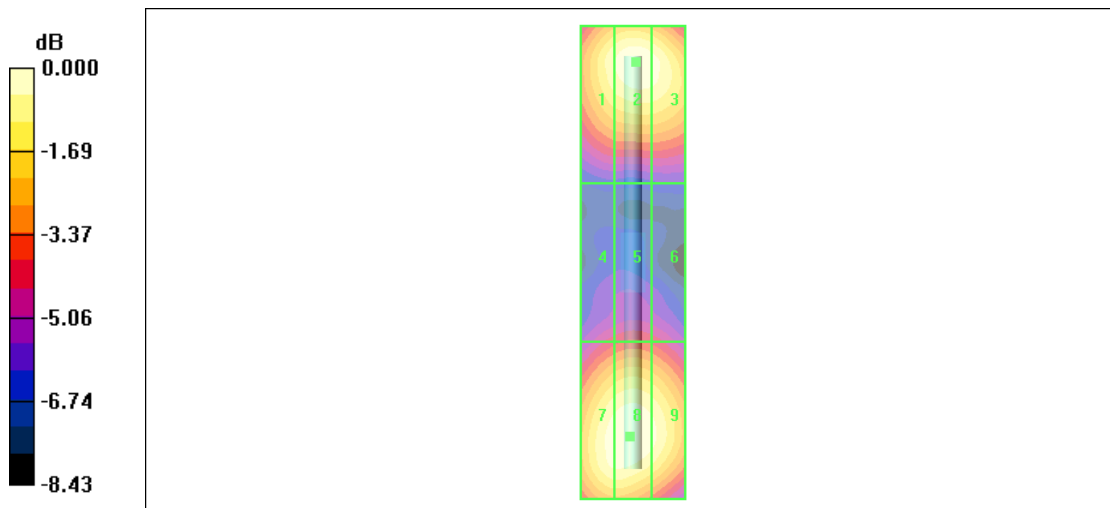
DASY4 Configuration:

- Probe: ER3DV6 - SN2256; ConvF(1, 1, 1); Calibrated: 2008/8/22
- Sensor-Surface: (Fix Surface)
- Electronics: DAE3 Sn577; Calibrated: 2008/11/12
- Phantom: HAC Test Arch with AMCC; Type: SD HAC P01 BA;
- Measurement SW: DASY4, V4.7 Build 80; Postprocessing SW: SEMCAD, V1.8 Build 186

E Scan - ER probe center 10mm above CD1880 Dipole/Hearing Aid Compatibility Test (41x181x1): Measurement
grid: dx=5mm, dy=5mm
Probe Modulation Factor = 1.00
Device Reference Point: 0.000, 0.000, -6.30 mm
Reference Value = 71.8 V/m; Power Drift = -0.012 dB
Average value of Total = (148.6 + 148.8) / 2 = 148.7

Peak E-field in V/m

Table with 3 columns (Grid 1-3, Grid 4-6, Grid 7-9) and 3 rows of peak E-field values in V/m.



0 dB = 148.8V/m



Test Laboratory: Sporton International Inc. SAR/HAC Testing Lab

Date: 2009/1/15

HAC_H_Dipole_835_20090115

DUT: HAC-Dipole 835 MHz

Communication System: CW; Frequency: 835 MHz; Duty Cycle: 1:1
Medium: Air Medium parameters used: sigma = 0 mho/m, epsilon_r = 1; rho = 1 kg/m^3
Ambient Temperature : 22.8 C

DASY4 Configuration:

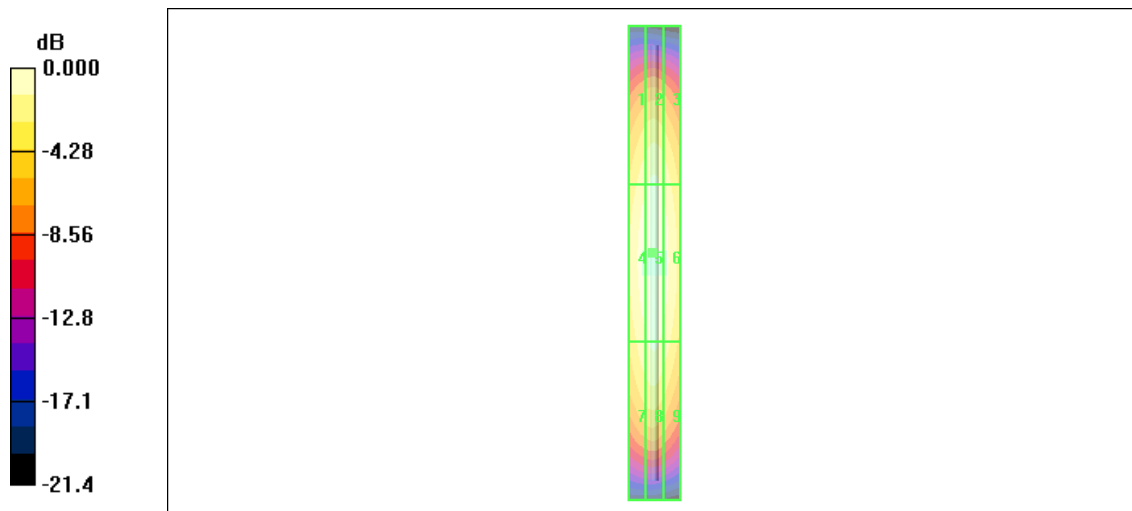
- Probe: H3DV6 - SN6076; ; Calibrated: 2008/8/22
- Sensor-Surface: (Fix Surface)
- Electronics: DAE3 Sn577; Calibrated: 2008/11/12
- Phantom: HAC Test Arch 4.6; Type: SD HAC P01 BA;
- Measurement SW: DASY4, V4.7 Build 71; Postprocessing SW: SEMCAD, V1.8 Build 184

H Scan - HSDV6 probe center 10mm above CD835 Dipole/Hearing Aid Compatibility Test (41x361x1):

Measurement grid: dx=5mm, dy=5mm
Probe Modulation Factor = 1.00
Device Reference Point: 0.000, 0.000, 353.7 mm
Reference Value = 0.507 A/m; Power Drift = -0.050 dB
Maximum value of Total = 0.520

Peak H-field in A/m

Table with 3 columns (Grid 1-3, Grid 4-6, Grid 7-9) and 3 rows of peak H-field values in A/m, with Grid 5 highlighted as 0.520 M4.



0 dB = 0.520A/m



Test Laboratory: Sporton International Inc. SAR/HAC Testing Lab

Date: 2009/3/7

HAC_H_Dipole_835_20090307

DUT: HAC-Dipole 835 MHz

Communication System: CW; Frequency: 835 MHz; Duty Cycle: 1:1
Medium: Air Medium parameters used: sigma = 0 mho/m, epsilon_r = 1; rho = 1 kg/m^3
Ambient Temperature : 22.3 C

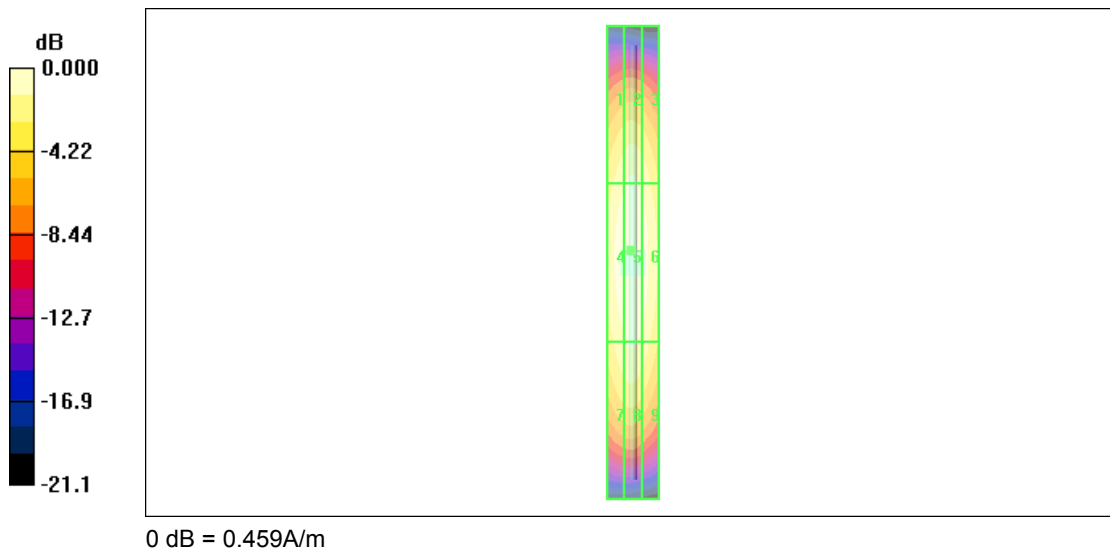
DASY4 Configuration:

- Probe: H3DV6 - SN6076; ; Calibrated: 2008/8/22
- Sensor-Surface: (Fix Surface)
- Electronics: DAE3 Sn577; Calibrated: 2008/11/12
- Phantom: HAC Test Arch with AMCC; Type: SD HAC P01 BA;
- Measurement SW: DASY4, V4.7 Build 80; Postprocessing SW: SEMCAD, V1.8 Build 186

H Scan - H3DV6 probe center 10mm above CD835 Dipole/Hearing Aid Compatibility Test (41x361x1): Measurement
grid: dx=5mm, dy=5mm
Probe Modulation Factor = 1.00
Device Reference Point: 0.000, 0.000, -6.30 mm
Reference Value = 0.445 A/m; Power Drift = 0.017 dB
Maximum value of Total = 0.459

Peak H-field in A/m

Table with 3 columns (Grid 1-3, Grid 4-6, Grid 7-9) and 3 rows of peak H-field values in A/m. Grid 5 is highlighted with the highest value of 0.459 M4.





Test Laboratory: Sporton International Inc. SAR/HAC Testing Lab

Date: 2009/1/15

HAC_H_Dipole_1880_20090115

DUT: HAC Dipole 1880 MHz

Communication System: CW; Frequency: 1880 MHz; Duty Cycle: 1:1
Medium: Air Medium parameters used: sigma = 0 mho/m, epsilon_r = 1; rho = 1 kg/m^3
Ambient Temperature : 22.8 C;

DASY4 Configuration:

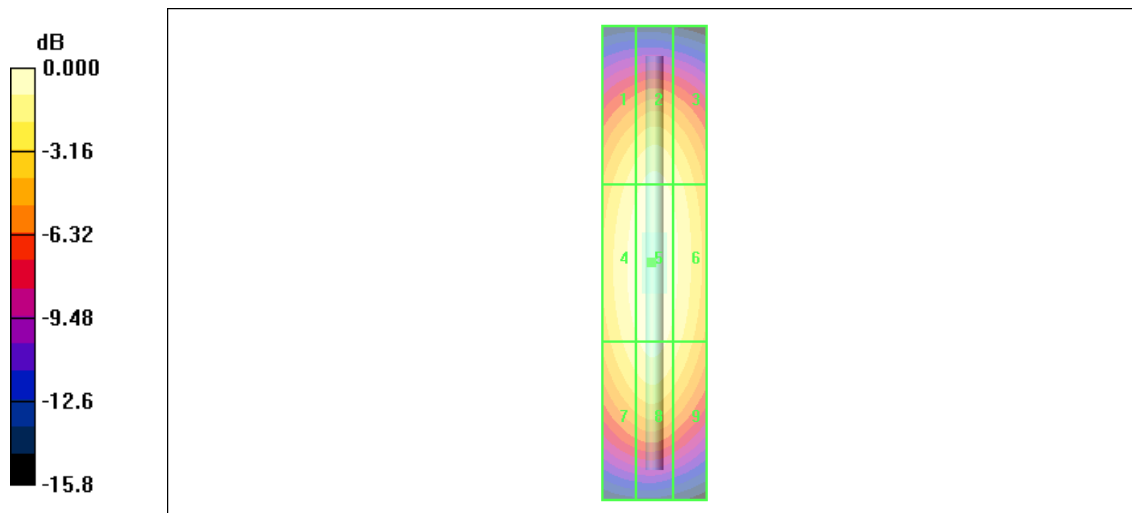
- Probe: H3DV6 - SN6076; ; Calibrated: 2008/8/22
- Sensor-Surface: (Fix Surface)
- Electronics: DAE3 Sn577; Calibrated: 2008/11/12
- Phantom: HAC Test Arch 4.6; Type: SD HAC P01 BA;
- Measurement SW: DASY4, V4.7 Build 71; Postprocessing SW: SEMCAD, V1.8 Build 184

H Scan - H3DV6 probe center 10mm above CD1880 Dipole/Hearing Aid Compatibility Test (41x181x1):

Measurement grid: dx=5mm, dy=5mm
Probe Modulation Factor = 1.00
Device Reference Point: 0.000, 0.000, 353.7 mm
Reference Value = 0.534 A/m; Power Drift = -0.010 dB
Maximum value of Total = 0.548

Peak H-field in A/m

Table with 3 columns (Grid 1-3, Grid 4-6, Grid 7-9) and 3 rows of peak H-field values in A/m, with Grid 5 highlighted as 0.548 M2.



0 dB = 0.548A/m



Test Laboratory: Sporton International Inc. SAR/HAC Testing Lab

Date: 2009/3/7

HAC_H_Dipole_1880_090307

DUT: HAC Dipole 1880 MHz

Communication System: CW; Frequency: 1880 MHz; Duty Cycle: 1:1
Medium: Air Medium parameters used: sigma = 0 mho/m, epsilon_r = 1; rho = 1 kg/m^3
Ambient Temperature : 22.3 C

DASY4 Configuration:

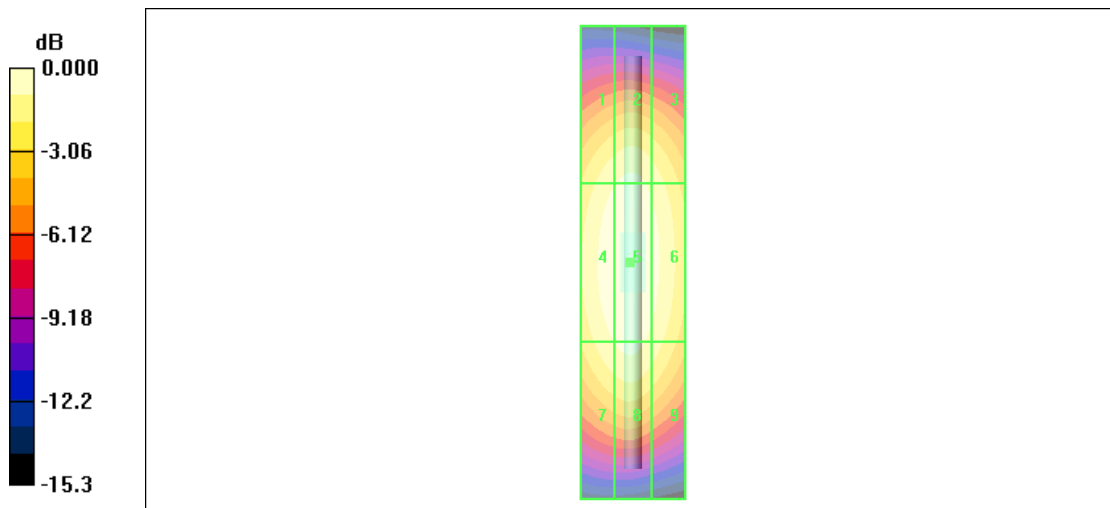
- Probe: H3DV6 - SN6076; ; Calibrated: 2008/8/22
- Sensor-Surface: (Fix Surface)
- Electronics: DAE3 Sn577; Calibrated: 2008/11/12
- Phantom: HAC Test Arch with AMCC; Type: SD HAC P01 BA;
- Measurement SW: DASY4, V4.7 Build 80; Postprocessing SW: SEMCAD, V1.8 Build 186

H Scan - HSDV6 probe center 10mm above CD1880 Dipole/Hearing Aid Compatibility Test (41x181x1):

Measurement grid: dx=5mm, dy=5mm
Probe Modulation Factor = 1.00
Device Reference Point: 0.000, 0.000, -6.30 mm
Reference Value = 0.485 A/m; Power Drift = -0.008 dB
Maximum value of Total = 0.497

Peak H-field in A/m

Table with 3 columns (Grid 1-3, Grid 4-6, Grid 7-9) and 3 rows of peak H-field values in A/m, with Grid 5 highlighted as the maximum value.



0 dB = 0.497A/m



Appendix B - HAC RF Emission Measurement Data

Test Laboratory: Sporton International Inc. SAR/HAC Testing Lab

Date: 2009/1/14

HAC_E_GSM850 Ch128_Battery 1

DUT: 803106-01

Communication System: GSM850; Frequency: 824.2 MHz;Duty Cycle: 1:8.3
Medium: Air Medium parameters used: $\sigma = 0$ mho/m, $\epsilon_r = 1$; $\rho = 1000$ kg/m³
Ambient Temperature : 22.8 °C

DASY4 Configuration:

- Probe: ER3DV6 - SN2256; ConvF(1, 1, 1); Calibrated: 2008/8/22
- Sensor-Surface: (Fix Surface)
- Electronics: DAE3 Sn577; Calibrated: 2008/11/12
- Phantom: HAC Test Arch 4.6; Type: SD HAC P01 BA;
- Measurement SW: DASY4, V4.7 Build 71; Postprocessing SW: SEMCAD, V1.8 Build 184

Ch128/Hearing Aid Compatibility Test (101x101x1): Measurement grid: dx=5mm, dy=5mm

Maximum value of peak Total field = 90.2 V/m

Probe Modulation Factor = 2.63

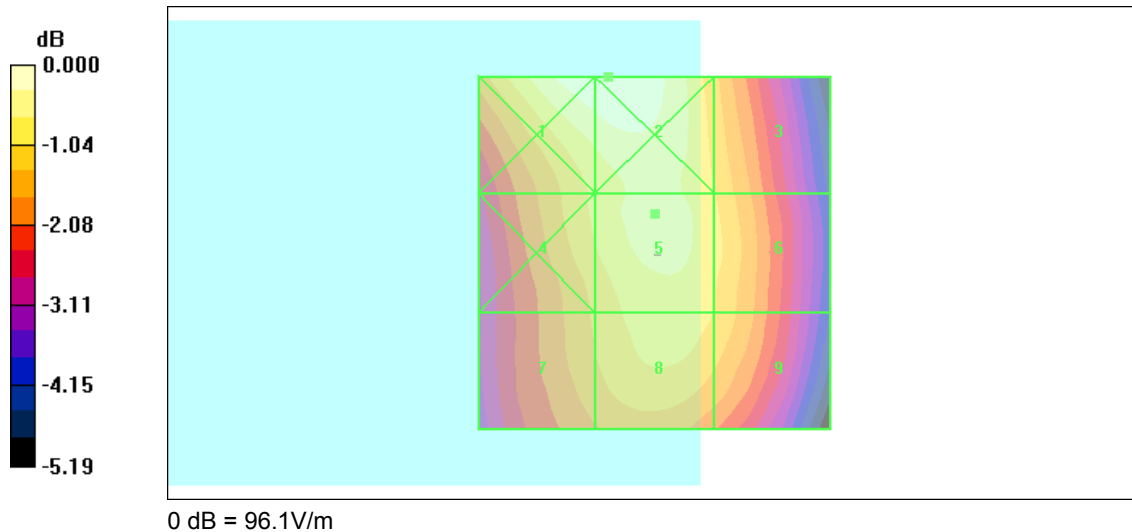
Device Reference Point: 0.000, 0.000, 353.7 mm

Reference Value = 44.1 V/m; Power Drift = -0.130 dB

Hearing Aid Near-Field Category: M4 (AWF -5 dB)

Peak E-field in V/m

Grid 1 95.8 M4	Grid 2 96.1 M4	Grid 3 85.4 M4
Grid 4 86.1 M4	Grid 5 90.2 M4	Grid 6 86.5 M4
Grid 7 82.5 M4	Grid 8 87.3 M4	Grid 9 85.1 M4





Test Laboratory: Sporton International Inc. SAR/HAC Testing Lab

Date: 2009/1/14

HAC_E_GSM850 Ch189_Battery 1

DUT: 803106-01

Communication System: GSM850; Frequency: 836.4 MHz; Duty Cycle: 1:8.3
Medium: Air Medium parameters used: sigma = 0 mho/m, epsilon_r = 1; rho = 1000 kg/m^3
Ambient Temperature : 22.6 C

DASY4 Configuration:

- Probe: ER3DV6 - SN2256; ConvF(1, 1, 1); Calibrated: 2008/8/22
- Sensor-Surface: (Fix Surface)
- Electronics: DAE3 Sn577; Calibrated: 2008/11/12
- Phantom: HAC Test Arch 4.6; Type: SD HAC P01 BA;
- Measurement SW: DASY4, V4.7 Build 71; Postprocessing SW: SEMCAD, V1.8 Build 184

Ch189/Hearing Aid Compatibility Test (101x101x1): Measurement grid: dx=5mm, dy=5mm

Maximum value of peak Total field = 108.4 V/m

Probe Modulation Factor = 2.63

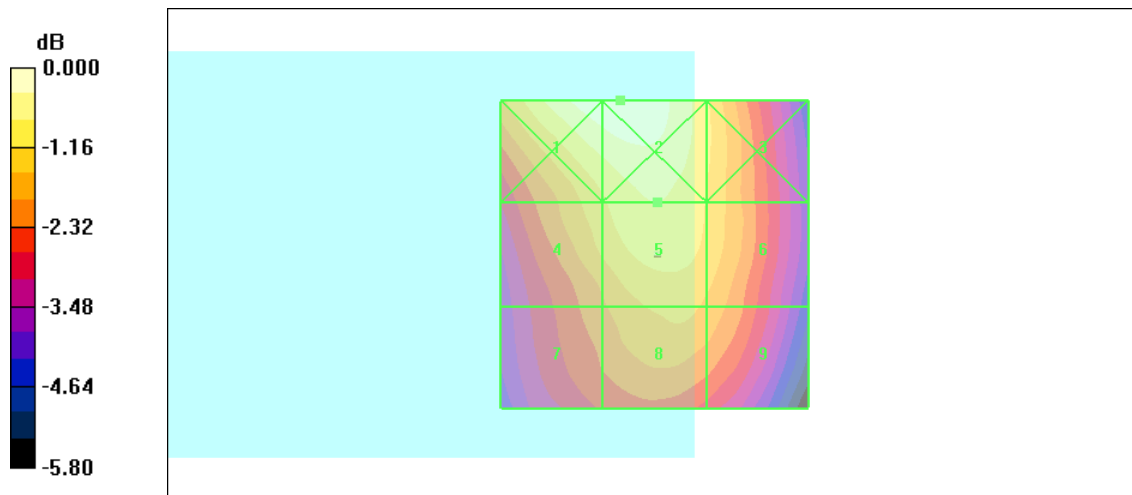
Device Reference Point: 0.000, 0.000, 353.7 mm

Reference Value = 51.5 V/m; Power Drift = -0.087 dB

Hearing Aid Near-Field Category: M4 (AWF -5 dB)

Peak E-field in V/m

Table with 3 columns (Grid 1-3, Grid 4-6, Grid 7-9) and 3 rows of peak E-field values in V/m.



0 dB = 118.5V/m



Test Laboratory: Sporton International Inc. SAR/HAC Testing Lab

Date: 2009/1/14

HAC_E_GSM850 Ch251_Battery 1

DUT: 803106-01

Communication System: GSM850; Frequency: 848.8 MHz;Duty Cycle: 1:8.3
Medium: Air Medium parameters used: sigma = 0 mho/m, epsilon_r = 1; rho = 1000 kg/m^3
Ambient Temperature : 22.7 C

DASY4 Configuration:

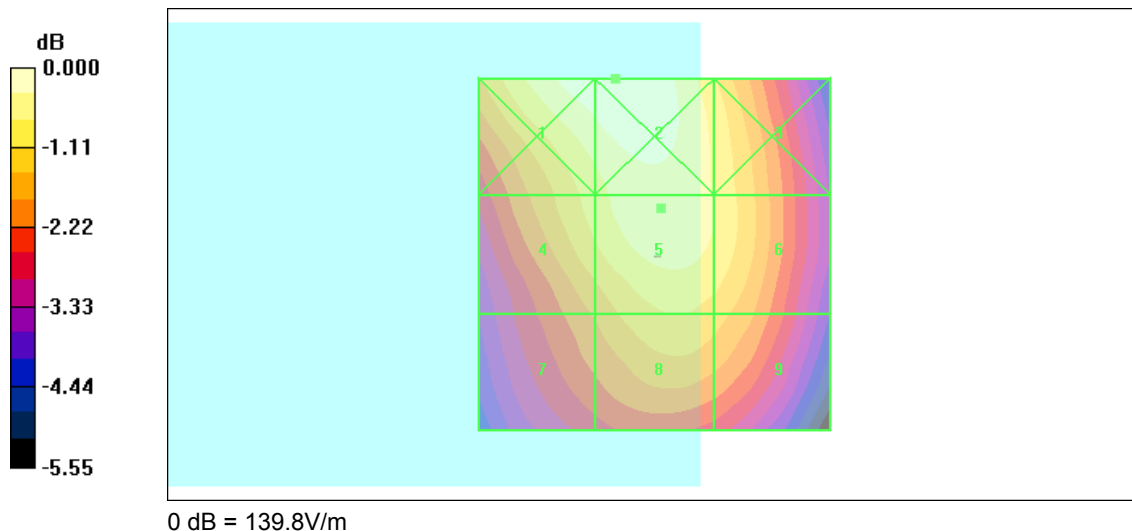
- Probe: ER3DV6 - SN2256; ConvF(1, 1, 1); Calibrated: 2008/8/22
- Sensor-Surface: (Fix Surface)
- Electronics: DAE3 Sn577; Calibrated: 2008/11/12
- Phantom: HAC Test Arch 4.6; Type: SD HAC P01 BA;
- Measurement SW: DASY4, V4.7 Build 71; Postprocessing SW: SEMCAD, V1.8 Build 184

Ch251/Hearing Aid Compatibility Test (101x101x1): Measurement grid: dx=5mm, dy=5mm

Maximum value of peak Total field = 132.8 V/m
Probe Modulation Factor = 2.63
Device Reference Point: 0.000, 0.000, 353.7 mm
Reference Value = 63.3 V/m; Power Drift = -0.019 dB
Hearing Aid Near-Field Category: M4 (AWF -5 dB)

Peak E-field in V/m

Table with 3 columns (Grid 1-3, Grid 4-6, Grid 7-9) and 3 rows of peak E-field values in V/m.





Test Laboratory: Sporton International Inc. SAR/HAC Testing Lab

Date: 2009/3/7

HAC_E_GSM850 Ch251_Battery 2

DUT: 803106-07

Communication System: GSM850; Frequency: 848.8 MHz;Duty Cycle: 1:8.3
Medium: Air Medium parameters used: sigma = 0 mho/m, epsilon_r = 1; rho = 1000 kg/m^3
Ambient Temperature : 22.3 C

DASY4 Configuration:

- Probe: ER3DV6 - SN2256; ConvF(1, 1, 1); Calibrated: 2008/8/22
- Sensor-Surface: (Fix Surface)
- Electronics: DAE3 Sn577; Calibrated: 2008/11/12
- Phantom: HAC Test Arch with AMCC; Type: SD HAC P01 BA;
- Measurement SW: DASY4, V4.7 Build 80; Postprocessing SW: SEMCAD, V1.8 Build 186

Ch251/Hearing Aid Compatibility Test (101x101x1): Measurement grid: dx=5mm, dy=5mm

Maximum value of peak Total field = 149.1 V/m

Probe Modulation Factor = 2.63

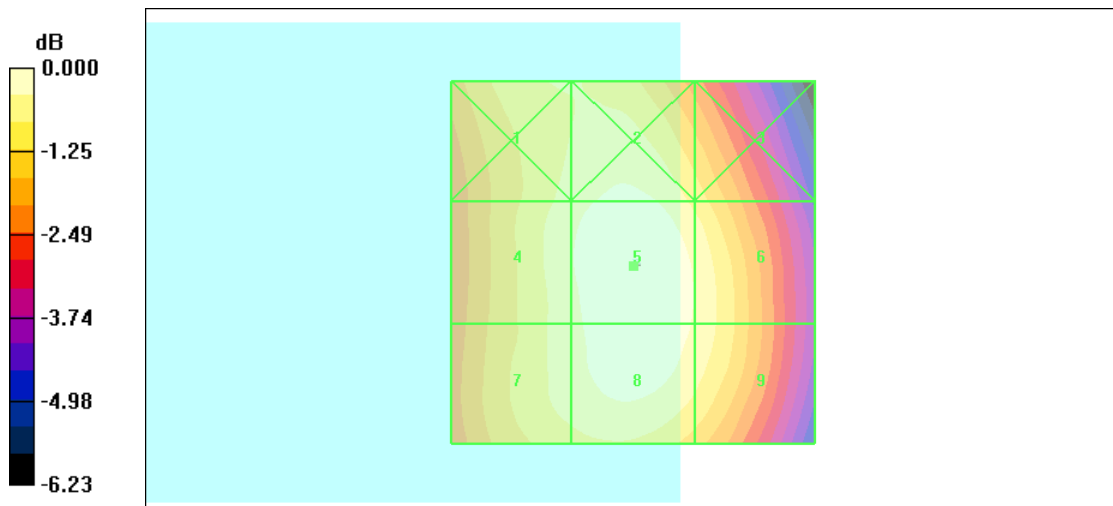
Device Reference Point: 0.000, 0.000, -6.30 mm

Reference Value = 72.3 V/m; Power Drift = 0.018 dB

Hearing Aid Near-Field Category: M4 (AWF -5 dB)

Peak E-field in V/m

Table with 3 columns (Grid 1-3, Grid 4-6, Grid 7-9) and 3 rows of peak E-field values in V/m.



0 dB = 149.1V/m



Test Laboratory: Sporton International Inc. SAR/HAC Testing Lab

Date: 2009/1/14

HAC_E_GSM1900 Ch512_Battery 1

DUT: 803106-01

Communication System: PCS; Frequency: 1850.2 MHz; Duty Cycle: 1:8.3
Medium: Air Medium parameters used: sigma = 0 mho/m, epsilon_r = 1; rho = 1000 kg/m^3
Ambient Temperature : 22.5 C

DASY4 Configuration:

- Probe: ER3DV6 - SN2256; ConvF(1, 1, 1); Calibrated: 2008/8/22
- Sensor-Surface: (Fix Surface)
- Electronics: DAE3 Sn577; Calibrated: 2008/11/12
- Phantom: HAC Test Arch 4.6; Type: SD HAC P01 BA;
- Measurement SW: DASY4, V4.7 Build 71; Postprocessing SW: SEMCAD, V1.8 Build 184

Ch512/Hearing Aid Compatibility Test (101x101x1): Measurement grid: dx=5mm, dy=5mm

Maximum value of peak Total field = 66.8 V/m

Probe Modulation Factor = 2.71

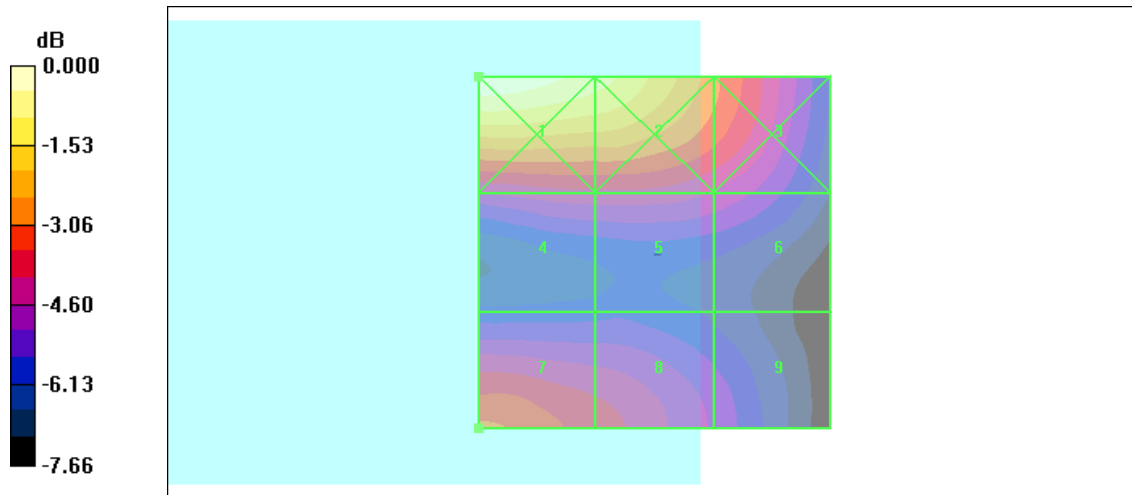
Device Reference Point: 0.000, 0.000, 353.7 mm

Reference Value = 21.1 V/m; Power Drift = -0.047 dB

Hearing Aid Near-Field Category: M3 (AWF -5 dB)

Peak E-field in V/m

Table with 3 columns (Grid 1-3, Grid 4-6, Grid 7-9) and 3 rows of peak E-field values in V/m.



0 dB = 93.7V/m



Test Laboratory: Sporton International Inc. SAR/HAC Testing Lab

Date: 2009/1/14

HAC_E_GSM1900 Ch661_Battery 1

DUT: 803106-01

Communication System: PCS; Frequency: 1880 MHz; Duty Cycle: 1:8.3
Medium: Air Medium parameters used: sigma = 0 mho/m, epsilon_r = 1; rho = 1000 kg/m^3
Ambient Temperature : 22.6 C

DASY4 Configuration:

- Probe: ER3DV6 - SN2256; ConvF(1, 1, 1); Calibrated: 2008/8/22
- Sensor-Surface: (Fix Surface)
- Electronics: DAE3 Sn577; Calibrated: 2008/11/12
- Phantom: HAC Test Arch 4.6; Type: SD HAC P01 BA;
- Measurement SW: DASY4, V4.7 Build 71; Postprocessing SW: SEMCAD, V1.8 Build 184

Ch661/Hearing Aid Compatibility Test (101x101x1): Measurement grid: dx=5mm, dy=5mm

Maximum value of peak Total field = 69.9 V/m

Probe Modulation Factor = 2.71

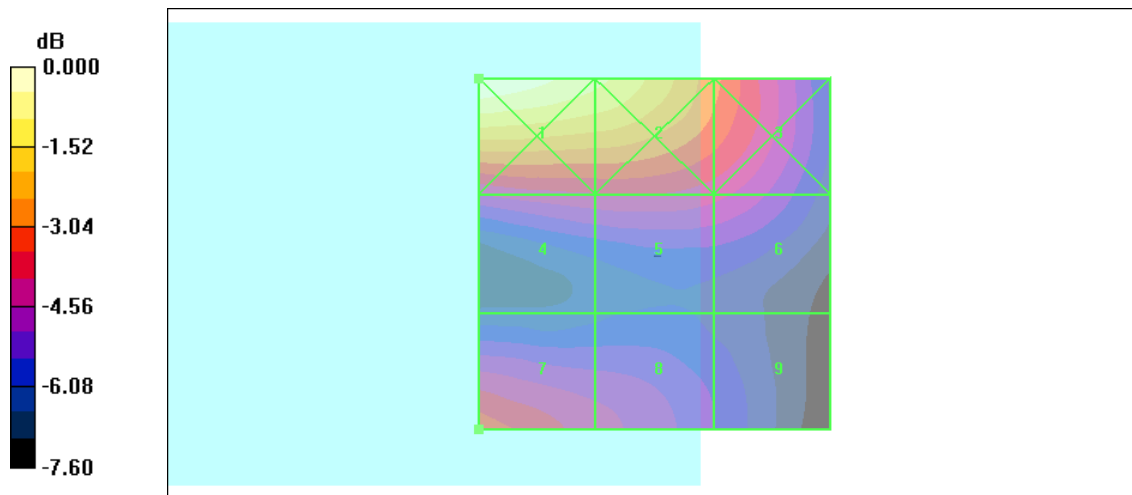
Device Reference Point: 0.000, 0.000, 353.7 mm

Reference Value = 23.6 V/m; Power Drift = -0.029 dB

Hearing Aid Near-Field Category: M3 (AWF -5 dB)

Peak E-field in V/m

Table with 3 columns (Grid 1-3, Grid 4-6, Grid 7-9) and 3 rows of peak E-field values in V/m.



0 dB = 101.6V/m



Test Laboratory: Sporton International Inc. SAR/HAC Testing Lab

Date: 2009/1/14

HAC_E_GSM1900 Ch810_Battery 1

DUT: 803106-01

Communication System: PCS; Frequency: 1909.8 MHz; Duty Cycle: 1:8.3
Medium: Air Medium parameters used: sigma = 0 mho/m, epsilon_r = 1; rho = 1000 kg/m^3
Ambient Temperature : 22.7 C

DASY4 Configuration:

- Probe: ER3DV6 - SN2256; ConvF(1, 1, 1); Calibrated: 2008/8/22
- Sensor-Surface: (Fix Surface)
- Electronics: DAE3 Sn577; Calibrated: 2008/11/12
- Phantom: HAC Test Arch 4.6; Type: SD HAC P01 BA;
- Measurement SW: DASY4, V4.7 Build 71; Postprocessing SW: SEMCAD, V1.8 Build 184

Ch810/Hearing Aid Compatibility Test (101x101x1): Measurement grid: dx=5mm, dy=5mm

Maximum value of peak Total field = 69.0 V/m

Probe Modulation Factor = 2.71

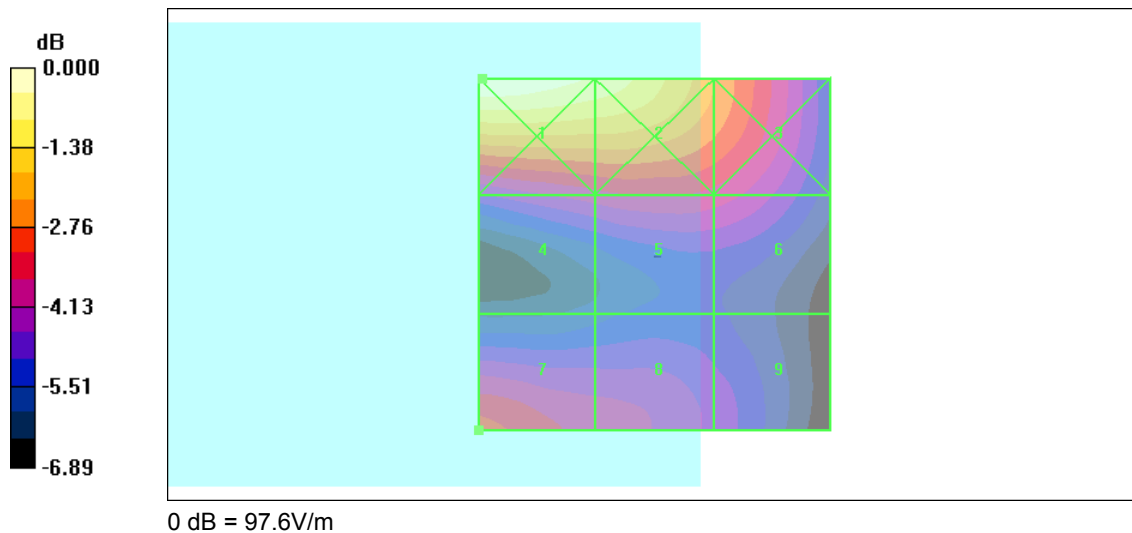
Device Reference Point: 0.000, 0.000, 353.7 mm

Reference Value = 24.0 V/m; Power Drift = -0.023 dB

Hearing Aid Near-Field Category: M3 (AWF -5 dB)

Peak E-field in V/m

Table with 3 columns (Grid 1-3, Grid 4-6, Grid 7-9) and 3 rows of peak E-field values in V/m.





Test Laboratory: Sporton International Inc. SAR/HAC Testing Lab

Date: 2009/3/7

HAC_E_GSM1900 Ch661_Battery 2

DUT: 803106-07

Communication System: PCS; Frequency: 1880 MHz; Duty Cycle: 1:8.3
Medium: Air Medium parameters used: sigma = 0 mho/m, epsilon_r = 1; rho = 1000 kg/m^3
Ambient Temperature : 22.3 C

DASY4 Configuration:

- Probe: ER3DV6 - SN2256; ConvF(1, 1, 1); Calibrated: 2008/8/22
- Sensor-Surface: (Fix Surface)
- Electronics: DAE3 Sn577; Calibrated: 2008/11/12
- Phantom: HAC Test Arch with AMCC; Type: SD HAC P01 BA;
- Measurement SW: DASY4, V4.7 Build 80; Postprocessing SW: SEMCAD, V1.8 Build 186

Ch661/Hearing Aid Compatibility Test (101x101x1): Measurement grid: dx=5mm, dy=5mm

Maximum value of peak Total field = 74.0 V/m

Probe Modulation Factor = 2.71

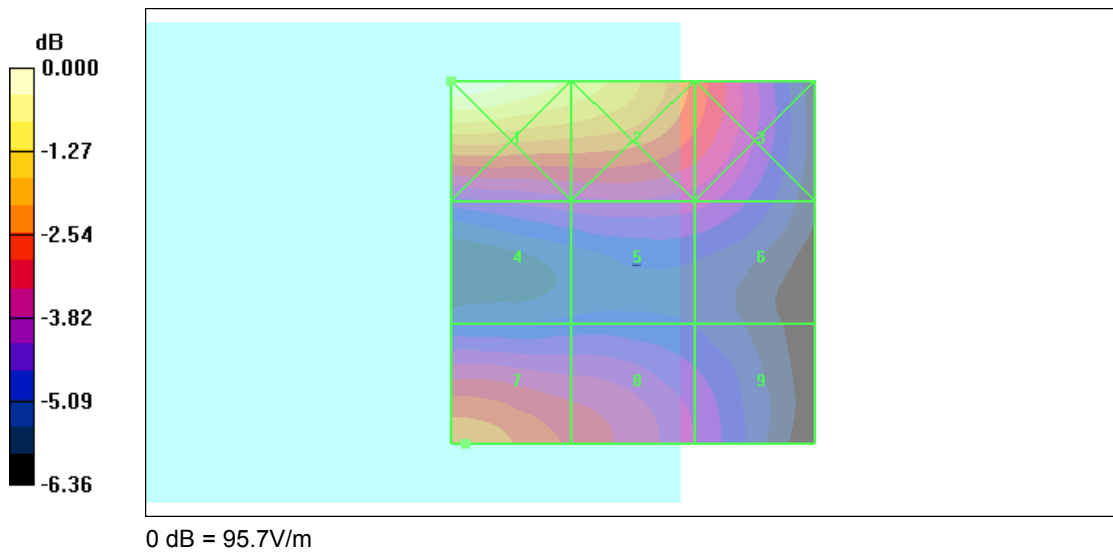
Device Reference Point: 0.000, 0.000, -6.30 mm

Reference Value = 22.7 V/m; Power Drift = 0.044 dB

Hearing Aid Near-Field Category: M3 (AWF -5 dB)

Peak E-field in V/m

Table with 3 columns (Grid 1-3, Grid 4-6, Grid 7-9) and 3 rows of peak E-field values in M3.





Test Laboratory: Sporton International Inc. SAR/HAC Testing Lab

Date: 2009/1/14

HAC_E_WCDMA850 Ch4132_Battery 1

DUT: 803106-01

Communication System: WCDMA; Frequency: 826.4 MHz; Duty Cycle: 1:1
Medium: Air Medium parameters used: sigma = 0 mho/m, epsilon_r = 1; rho = 1000 kg/m^3
Ambient Temperature : 22.5 C

DASY4 Configuration:

- Probe: ER3DV6 - SN2256; ConvF(1, 1, 1); Calibrated: 2008/8/22
- Sensor-Surface: (Fix Surface)
- Electronics: DAE3 Sn577; Calibrated: 2008/11/12
- Phantom: HAC Test Arch 4.6; Type: SD HAC P01 BA;
- Measurement SW: DASY4, V4.7 Build 71; Postprocessing SW: SEMCAD, V1.8 Build 184

Ch4132/Hearing Aid Compatibility Test (101x101x1): Measurement grid: dx=5mm, dy=5mm

Maximum value of peak Total field = 33.0 V/m

Probe Modulation Factor = 0.981

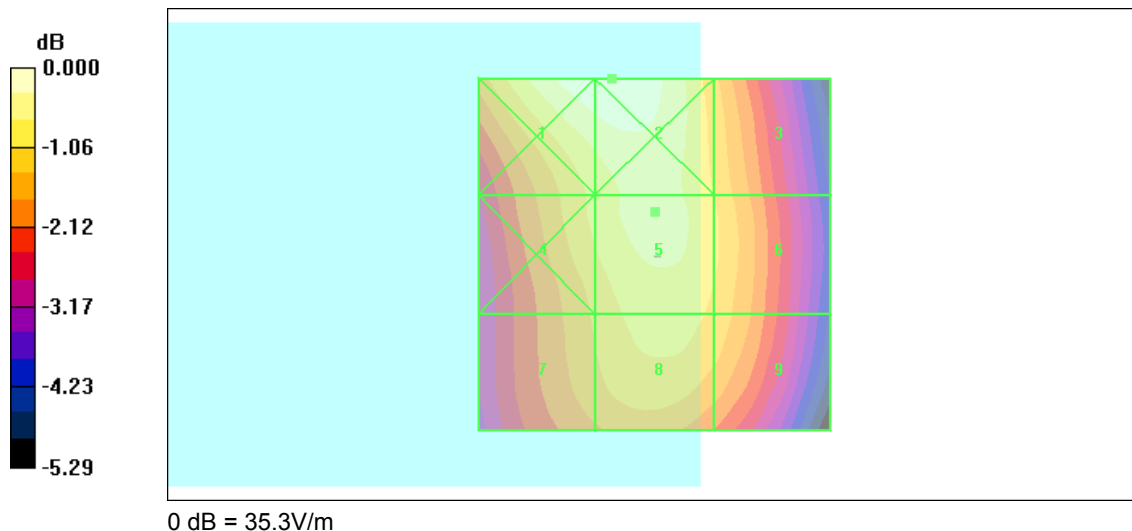
Device Reference Point: 0.000, 0.000, 353.7 mm

Reference Value = 42.9 V/m; Power Drift = -0.021 dB

Hearing Aid Near-Field Category: M4 (AWF 0 dB)

Peak E-field in V/m

Table with 3 columns (Grid 1-3, Grid 4-6, Grid 7-9) and 3 rows of peak E-field values in M4.





Test Laboratory: Sporton International Inc. SAR/HAC Testing Lab

Date: 2009/1/14

HAC_E_WCDMA850 Ch4182_Battery 1

DUT: 803106-01

Communication System: WCDMA; Frequency: 836.4 MHz; Duty Cycle: 1:1
Medium: Air Medium parameters used: sigma = 0 mho/m, epsilon_r = 1; rho = 1000 kg/m^3
Ambient Temperature : 22.6 C

DASY4 Configuration:

- Probe: ER3DV6 - SN2256; ConvF(1, 1, 1); Calibrated: 2008/8/22
- Sensor-Surface: (Fix Surface)
- Electronics: DAE3 Sn577; Calibrated: 2008/11/12
- Phantom: HAC Test Arch 4.6; Type: SD HAC P01 BA;
- Measurement SW: DASY4, V4.7 Build 71; Postprocessing SW: SEMCAD, V1.8 Build 184

Ch4182/Hearing Aid Compatibility Test (101x101x1): Measurement grid: dx=5mm, dy=5mm

Maximum value of peak Total field = 38.9 V/m

Probe Modulation Factor = 0.981

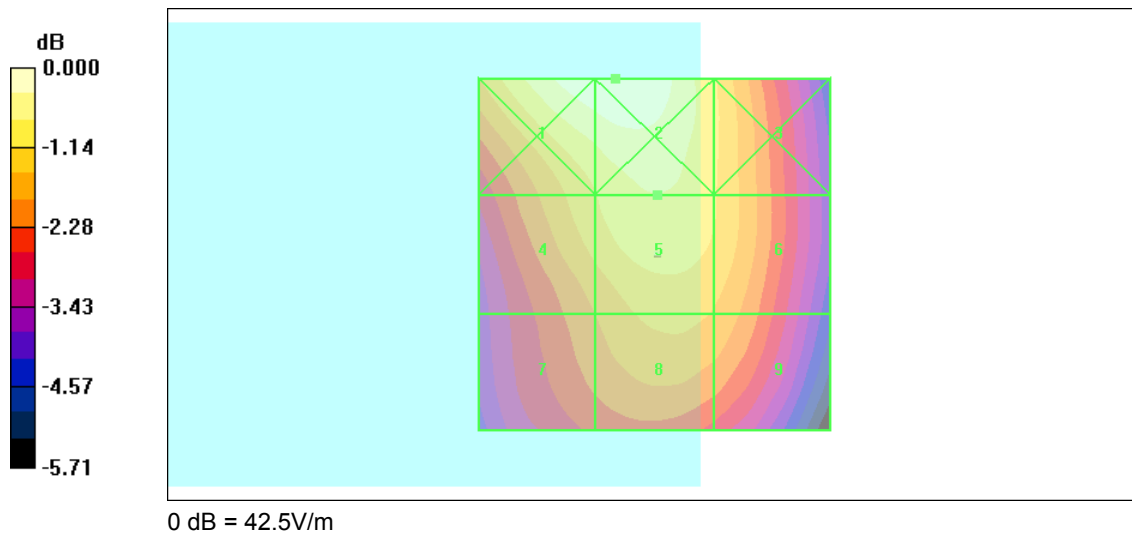
Device Reference Point: 0.000, 0.000, 353.7 mm

Reference Value = 49.9 V/m; Power Drift = 0.002 dB

Hearing Aid Near-Field Category: M4 (AWF 0 dB)

Peak E-field in V/m

Table with 3 columns (Grid 1-3, Grid 4-6, Grid 7-9) and 3 rows of peak E-field values in M4.





Test Laboratory: Sporton International Inc. SAR/HAC Testing Lab

Date: 2009/1/14

HAC_E_WCDMA850 Ch4233_Battery 1

DUT: 803106-01

Communication System: WCDMA; Frequency: 846.6 MHz; Duty Cycle: 1:1
Medium: Air Medium parameters used: sigma = 0 mho/m, epsilon_r = 1; rho = 1000 kg/m^3
Ambient Temperature : 22.6 C

DASY4 Configuration:

- Probe: ER3DV6 - SN2256; ConvF(1, 1, 1); Calibrated: 2008/8/22
- Sensor-Surface: (Fix Surface)
- Electronics: DAE3 Sn577; Calibrated: 2008/11/12
- Phantom: HAC Test Arch 4.6; Type: SD HAC P01 BA;
- Measurement SW: DASY4, V4.7 Build 71; Postprocessing SW: SEMCAD, V1.8 Build 184

Ch4233/Hearing Aid Compatibility Test (101x101x1): Measurement grid: dx=5mm, dy=5mm

Maximum value of peak Total field = 45.0 V/m

Probe Modulation Factor = 0.981

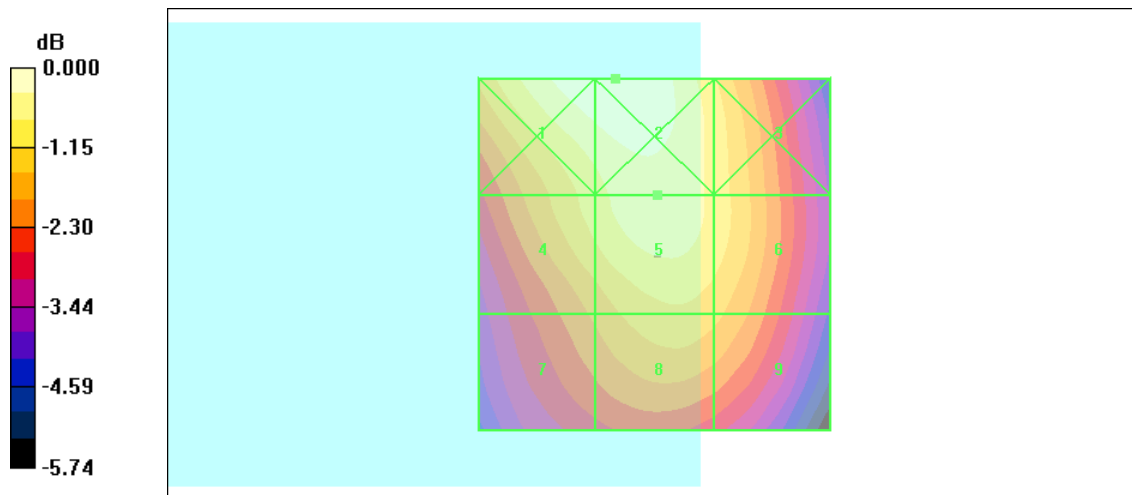
Device Reference Point: 0.000, 0.000, 353.7 mm

Reference Value = 57.5 V/m; Power Drift = -0.079 dB

Hearing Aid Near-Field Category: M4 (AWF 0 dB)

Peak E-field in V/m

Table with 3 columns (Grid 1-3, Grid 4-6, Grid 7-9) and 3 rows of peak E-field values in V/m (e.g., 47.4 M4, 47.7 M4, 43.1 M4).



0 dB = 47.7V/m



Test Laboratory: Sporton International Inc. SAR/HAC Testing Lab

Date: 2009/3/7

HAC_E_WCDMA850 Ch4233_Battery 2

DUT: 803106-07

Communication System: WCDMA; Frequency: 846.6 MHz; Duty Cycle: 1:1
Medium: Air Medium parameters used: sigma = 0 mho/m, epsilon_r = 1; rho = 1000 kg/m^3
Ambient Temperature : 22.2 C

DASY4 Configuration:

- Probe: ER3DV6 - SN2256; ConvF(1, 1, 1); Calibrated: 2008/8/22
- Sensor-Surface: (Fix Surface)
- Electronics: DAE3 Sn577; Calibrated: 2008/11/12
- Phantom: HAC Test Arch with AMCC; Type: SD HAC P01 BA;
- Measurement SW: DASY4, V4.7 Build 80; Postprocessing SW: SEMCAD, V1.8 Build 186

Ch4233/Hearing Aid Compatibility Test (101x101x1): Measurement grid: dx=5mm, dy=5mm

Maximum value of peak Total field = 51.8 V/m

Probe Modulation Factor = 0.981

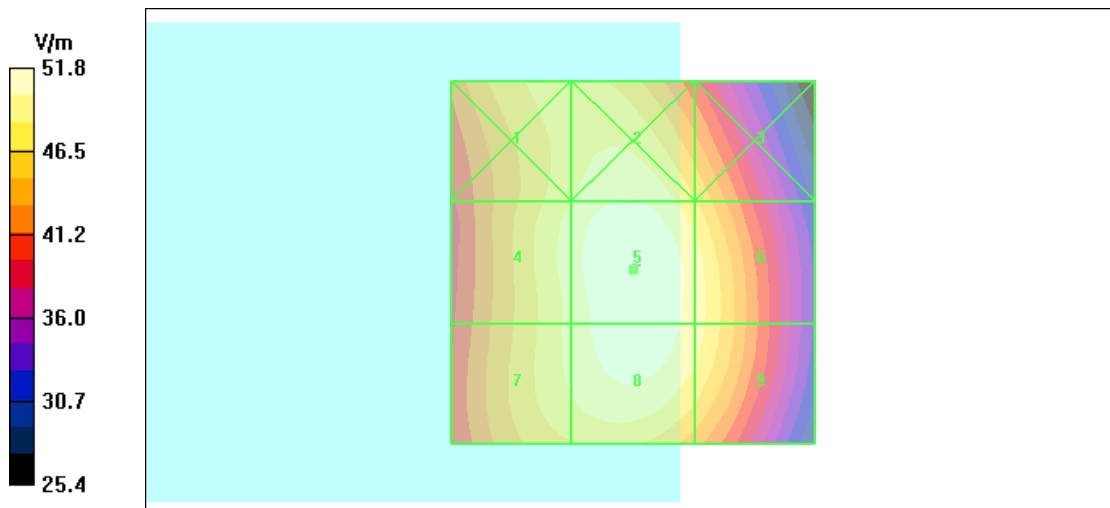
Device Reference Point: 0.000, 0.000, -6.30 mm

Reference Value = 67.2 V/m; Power Drift = 0.013 dB

Hearing Aid Near-Field Category: M4 (AWF 0 dB)

Peak E-field in V/m

Table with 3 columns (Grid 1-3, Grid 4-6, Grid 7-9) and 3 rows of peak E-field values in M4.





Test Laboratory: Sporton International Inc. SAR/HAC Testing Lab

Date: 2009/1/14

HAC_E_WCDMA1900 Ch9262_Battery 1

DUT: 803106-01

Communication System: WCDMA; Frequency: 1852.4 MHz; Duty Cycle: 1:1
Medium: Air Medium parameters used: sigma = 0 mho/m, epsilon_r = 1; rho = 1000 kg/m^3
Ambient Temperature : 22.5 C

DASY4 Configuration:

- Probe: ER3DV6 - SN2256; ConvF(1, 1, 1); Calibrated: 2008/8/22
- Sensor-Surface: (Fix Surface)
- Electronics: DAE3 Sn577; Calibrated: 2008/11/12
- Phantom: HAC Test Arch 4.6; Type: SD HAC P01 BA;
- Measurement SW: DASY4, V4.7 Build 71; Postprocessing SW: SEMCAD, V1.8 Build 184

Ch9262/Hearing Aid Compatibility Test (101x101x1): Measurement grid: dx=5mm, dy=5mm

Maximum value of peak Total field = 36.8 V/m

Probe Modulation Factor = 0.977

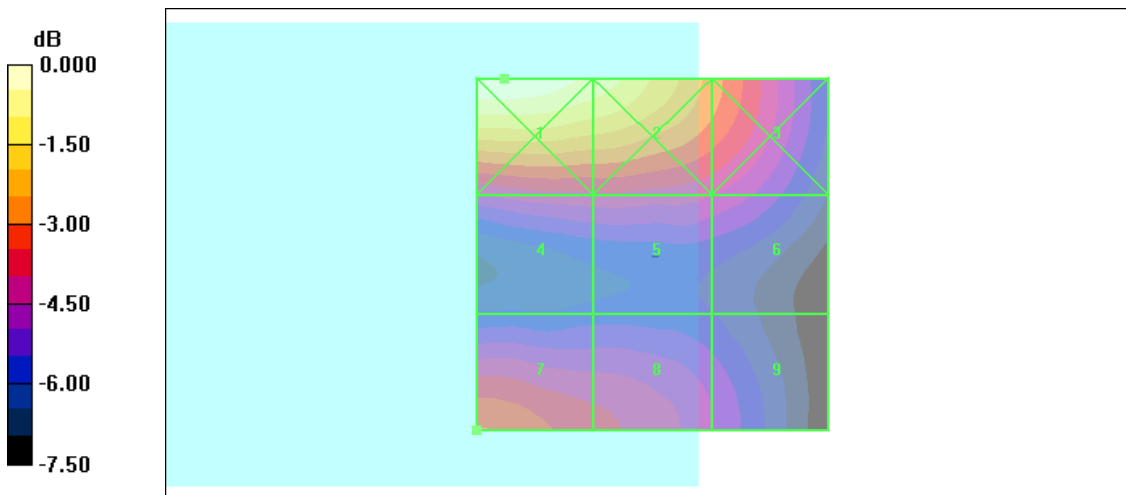
Device Reference Point: 0.000, 0.000, 353.7 mm

Reference Value = 32.8 V/m; Power Drift = -0.055 dB

Hearing Aid Near-Field Category: M4 (AWF 0 dB)

Peak E-field in V/m

Table with 3 columns (Grid 1-3, Grid 4-6, Grid 7-9) and 3 rows of peak E-field values in M4.



0 dB = 51.6V/m



Test Laboratory: Sporton International Inc. SAR/HAC Testing Lab

Date: 2009/1/14

HAC_E_WCDMA1900 Ch9400_Battery 1

DUT: 803106-01

Communication System: WCDMA; Frequency: 1880 MHz;Duty Cycle: 1:1
Medium: Air Medium parameters used: sigma = 0 mho/m, epsilon_r = 1; rho = 1000 kg/m^3
Ambient Temperature : 22.7 C

DASY4 Configuration:

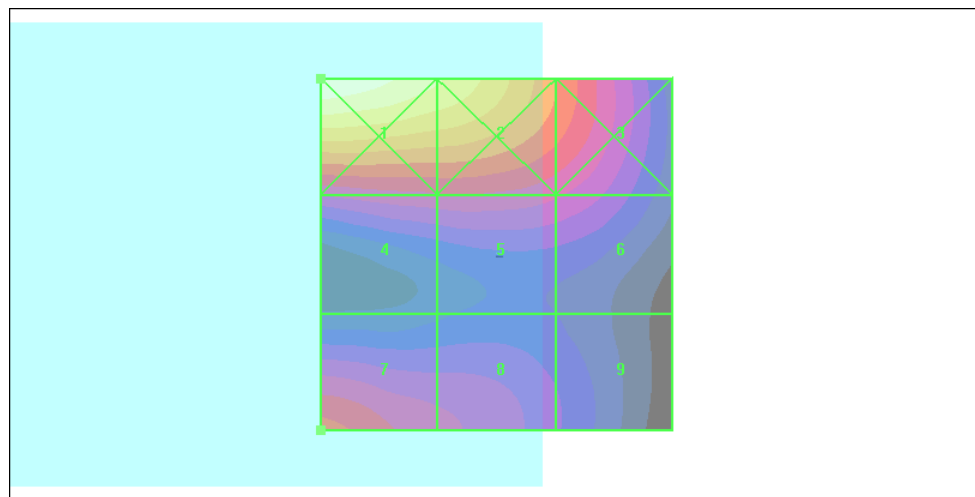
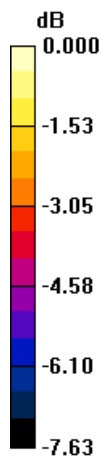
- Probe: ER3DV6 - SN2256; ConvF(1, 1, 1); Calibrated: 2008/8/22
- Sensor-Surface: (Fix Surface)
- Electronics: DAE3 Sn577; Calibrated: 2008/11/12
- Phantom: HAC Test Arch 4.6; Type: SD HAC P01 BA;
- Measurement SW: DASY4, V4.7 Build 71; Postprocessing SW: SEMCAD, V1.8 Build 184

Ch9400/Hearing Aid Compatibility Test (101x101x1): Measurement grid: dx=5mm, dy=5mm

Maximum value of peak Total field = 33.8 V/m
Probe Modulation Factor = 0.977
Device Reference Point: 0.000, 0.000, 353.7 mm
Reference Value = 32.1 V/m; Power Drift = -0.066 dB
Hearing Aid Near-Field Category: M4 (AWF 0 dB)

Peak E-field in V/m

Table with 3 columns (Grid 1-3, Grid 4-6, Grid 7-9) and 3 rows of peak E-field values in M4.



0 dB = 49.6V/m



Test Laboratory: Sporton International Inc. SAR/HAC Testing Lab

Date: 2009/1/14

HAC_E_WCDMA1900 Ch9538_Battery 1

DUT: 803106-01

Communication System: WCDMA; Frequency: 1907.6 MHz; Duty Cycle: 1:1
Medium: Air Medium parameters used: sigma = 0 mho/m, epsilon_r = 1; rho = 1000 kg/m^3
Ambient Temperature : 22.7 C

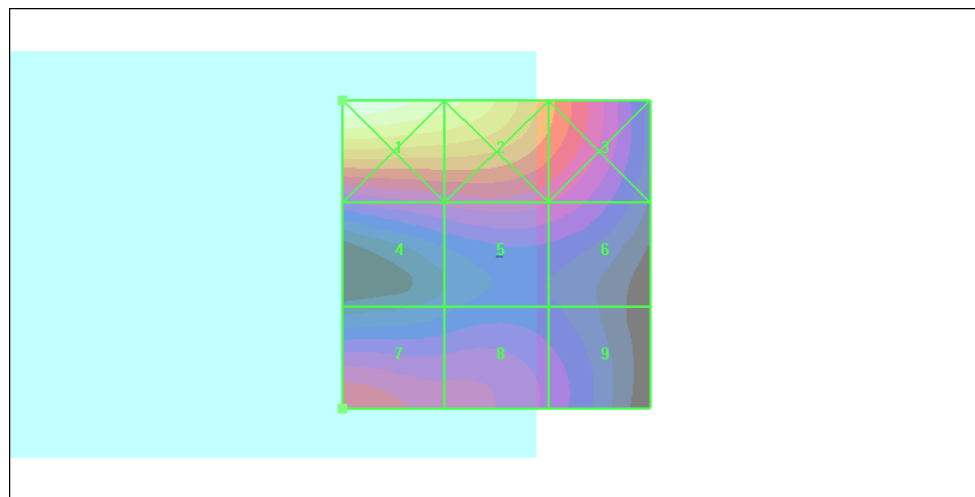
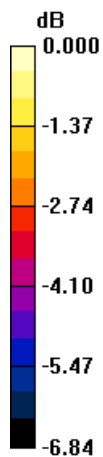
DASY4 Configuration:

- Probe: ER3DV6 - SN2256; ConvF(1, 1, 1); Calibrated: 2008/8/22
- Sensor-Surface: (Fix Surface)
- Electronics: DAE3 Sn577; Calibrated: 2008/11/12
- Phantom: HAC Test Arch 4.6; Type: SD HAC P01 BA;
- Measurement SW: DASY4, V4.7 Build 71; Postprocessing SW: SEMCAD, V1.8 Build 184

Ch9538/Hearing Aid Compatibility Test (101x101x1): Measurement grid: dx=5mm, dy=5mm
Maximum value of peak Total field = 30.0 V/m
Probe Modulation Factor = 0.977
Device Reference Point: 0.000, 0.000, 353.7 mm
Reference Value = 28.7 V/m; Power Drift = 0.136 dB
Hearing Aid Near-Field Category: M4 (AWF 0 dB)

Peak E-field in V/m

Table with 3 columns (Grid 1-3, Grid 4-6, Grid 7-9) and 3 rows of peak E-field values in M4.



0 dB = 43.0V/m



Test Laboratory: Sporton International Inc. SAR/HAC Testing Lab

Date: 2009/3/7

HAC_E_WCDMA1900 Ch9262_Battery 2

DUT: 803106-07

Communication System: WCDMA; Frequency: 1852.4 MHz; Duty Cycle: 1:1
Medium: Air Medium parameters used: sigma = 0 mho/m, epsilon_r = 1; rho = 1000 kg/m^3
Ambient Temperature : 22.3 C

DASY4 Configuration:

- Probe: ER3DV6 - SN2256; ConvF(1, 1, 1); Calibrated: 2008/8/22
- Sensor-Surface: (Fix Surface)
- Electronics: DAE3 Sn577; Calibrated: 2008/11/12
- Phantom: HAC Test Arch with AMCC; Type: SD HAC P01 BA;
- Measurement SW: DASY4, V4.7 Build 80; Postprocessing SW: SEMCAD, V1.8 Build 186

Ch9262/Hearing Aid Compatibility Test (101x101x1): Measurement grid: dx=5mm, dy=5mm

Maximum value of peak Total field = 37.7 V/m

Probe Modulation Factor = 0.977

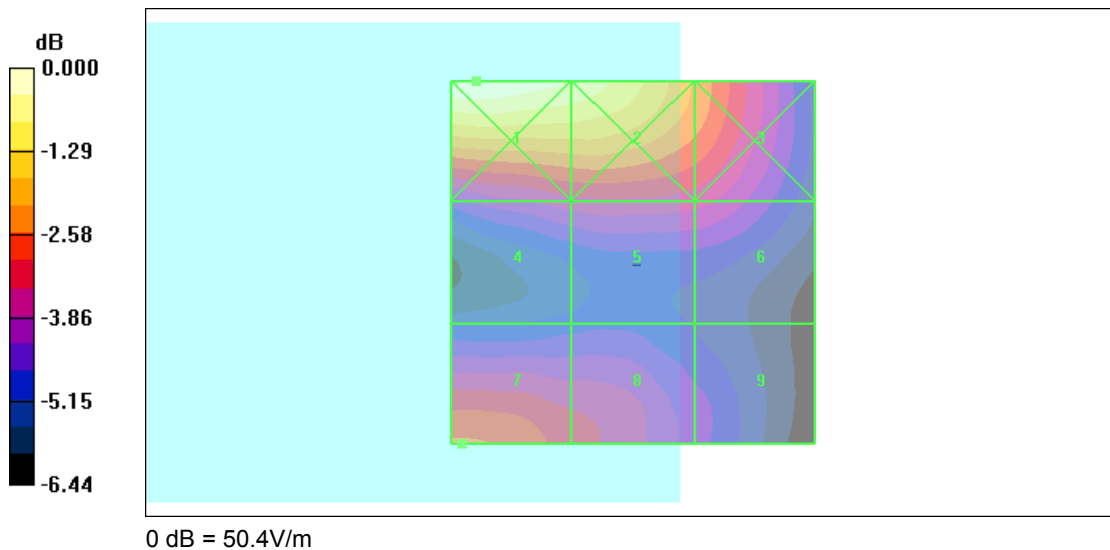
Device Reference Point: 0.000, 0.000, -6.30 mm

Reference Value = 33.4 V/m; Power Drift = 0.191 dB

Hearing Aid Near-Field Category: M4 (AWF 0 dB)

Peak E-field in V/m

Table with 3 columns (Grid 1-3, Grid 4-6, Grid 7-9) and 3 rows of peak E-field values in M4.





Test Laboratory: Sporton International Inc. SAR/HAC Testing Lab

Date: 2009/1/15

HAC_H_GSM850_Ch128_Battery 1

DUT: 803106-01

Communication System: GSM850; Frequency: 824.2 MHz; Duty Cycle: 1:8.3
Medium: Air Medium parameters used: sigma = 0 mho/m, epsilon_r = 1; rho = 1 kg/m^3
Ambient Temperature : 22.7 C

DASY4 Configuration:

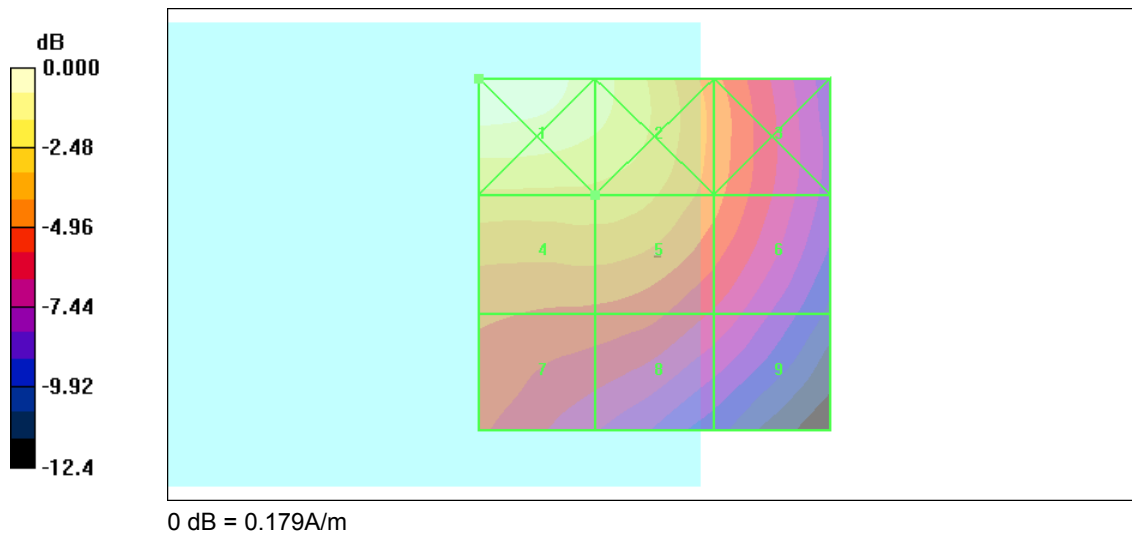
- Probe: H3DV6 - SN6076; ; Calibrated: 2008/8/22
- Sensor-Surface: (Fix Surface)
- Electronics: DAE3 Sn577; Calibrated: 2008/11/12
- Phantom: HAC Test Arch 4.6; Type: SD HAC P01 BA;
- Measurement SW: DASY4, V4.7 Build 71; Postprocessing SW: SEMCAD, V1.8 Build 184

Ch128/Hearing Aid Compatibility Test (101x101x1): Measurement grid: dx=5mm, dy=5mm

Maximum value of peak Total field = 0.132 A/m
Probe Modulation Factor = 1.50
Device Reference Point: 0.000, 0.000, 353.7 mm
Reference Value = 0.091 A/m; Power Drift = -0.071 dB
Hearing Aid Near-Field Category: M4 (AWF -5 dB)

Peak H-field in A/m

Table with 3 columns (Grid 1-3, Grid 4-6, Grid 7-9) and 3 rows of field strength values in A/m.





Test Laboratory: Sporton International Inc. SAR/HAC Testing Lab

Date: 2009/1/15

HAC_H_GSM850_Ch189_Battery 1

DUT: 803106-01

Communication System: GSM850; Frequency: 836.4 MHz; Duty Cycle: 1:8.3
Medium: Air Medium parameters used: sigma = 0 mho/m, epsilon_r = 1; rho = 1 kg/m^3
Ambient Temperature : 22.7 C

DASY4 Configuration:

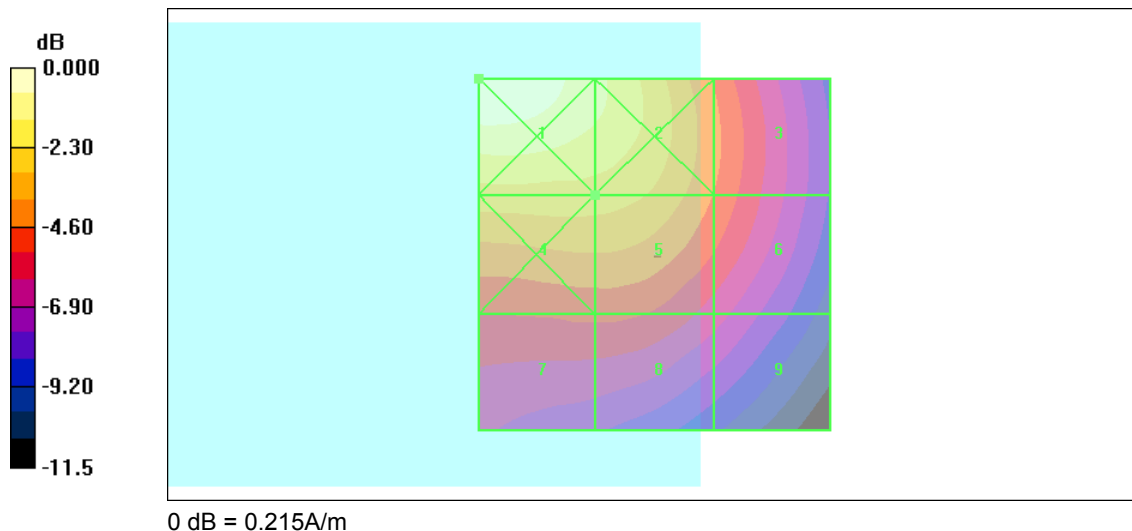
- Probe: H3DV6 - SN6076; ; Calibrated: 2008/8/22
- Sensor-Surface: (Fix Surface)
- Electronics: DAE3 Sn577; Calibrated: 2008/11/12
- Phantom: HAC Test Arch 4.6; Type: SD HAC P01 BA;
- Measurement SW: DASY4, V4.7 Build 71; Postprocessing SW: SEMCAD, V1.8 Build 184

Ch189/Hearing Aid Compatibility Test (101x101x1): Measurement grid: dx=5mm, dy=5mm

Maximum value of peak Total field = 0.159 A/m
Probe Modulation Factor = 1.50
Device Reference Point: 0.000, 0.000, 353.7 mm
Reference Value = 0.109 A/m; Power Drift = -0.002 dB
Hearing Aid Near-Field Category: M4 (AWF -5 dB)

Peak H-field in A/m

Table with 3 columns (Grid 1-3, Grid 4-6, Grid 7-9) and 3 rows of peak H-field values in A/m, such as 0.215 M4, 0.186 M4, 0.130 M4, etc.





Test Laboratory: Sporton International Inc. SAR/HAC Testing Lab

Date: 2009/1/15

HAC_H_GSM850_Ch251_Battery 1

DUT: 803106-01

Communication System: GSM850; Frequency: 848.8 MHz; Duty Cycle: 1:8.3
Medium: Air Medium parameters used: sigma = 0 mho/m, epsilon_r = 1; rho = 1 kg/m^3
Ambient Temperature : 22.8 C

DASY4 Configuration:

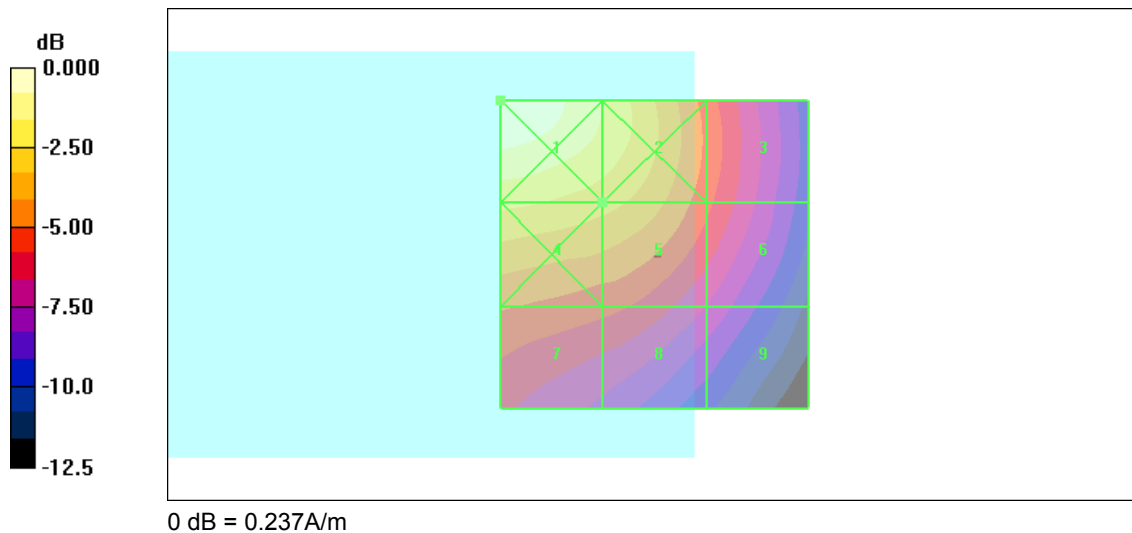
- Probe: H3DV6 - SN6076; ; Calibrated: 2008/8/22
- Sensor-Surface: (Fix Surface)
- Electronics: DAE3 Sn577; Calibrated: 2008/11/12
- Phantom: HAC Test Arch 4.6; Type: SD HAC P01 BA;
- Measurement SW: DASY4, V4.7 Build 71; Postprocessing SW: SEMCAD, V1.8 Build 184

Ch251/Hearing Aid Compatibility Test (101x101x1): Measurement grid: dx=5mm, dy=5mm

Maximum value of peak Total field = 0.168 A/m
Probe Modulation Factor = 1.50
Device Reference Point: 0.000, 0.000, 353.7 mm
Reference Value = 0.108 A/m; Power Drift = 0.045 dB
Hearing Aid Near-Field Category: M4 (AWF -5 dB)

Peak H-field in A/m

Table with 3 columns (Grid 1-3, Grid 4-6, Grid 7-9) and 3 rows of peak H-field values in A/m, such as 0.237 M4, 0.196 M4, 0.131 M4, etc.



0 dB = 0.237A/m



Test Laboratory: Sporton International Inc. SAR/HAC Testing Lab

Date: 2009/3/7

HAC_H_GSM850 Ch251_Battery 2

DUT: 803106-07

Communication System: GSM850; Frequency: 848.8 MHz;Duty Cycle: 1:8.3
Medium: Air Medium parameters used: sigma = 0 mho/m, epsilon_r = 1; rho = 1 kg/m^3
Ambient Temperature : 22.3 C

DASY4 Configuration:

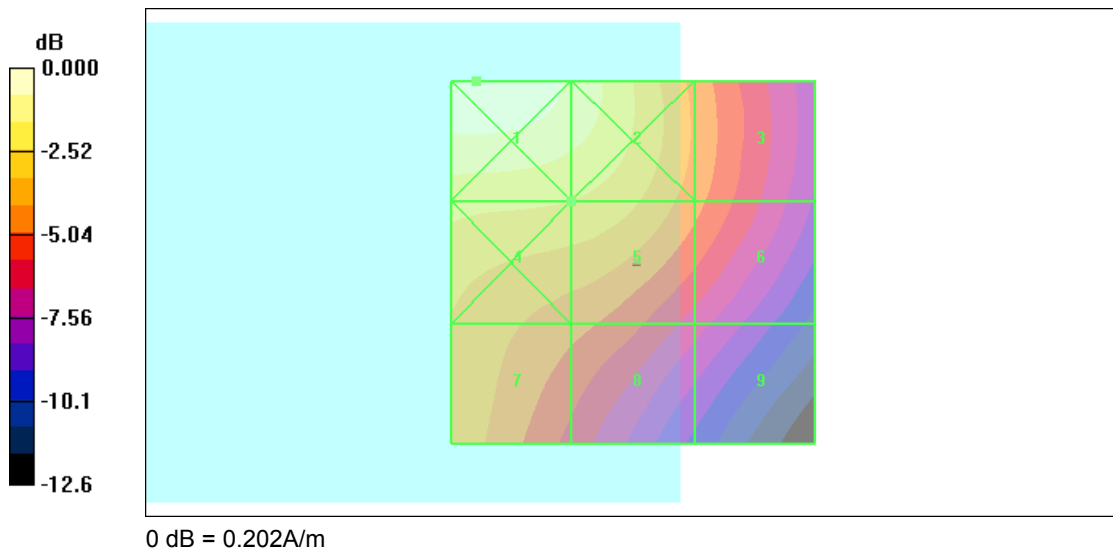
- Probe: H3DV6 - SN6076; ; Calibrated: 2008/8/22
- Sensor-Surface: (Fix Surface)
- Electronics: DAE3 Sn577; Calibrated: 2008/11/12
- Phantom: HAC Test Arch with AMCC; Type: SD HAC P01 BA;
- Measurement SW: DASY4, V4.7 Build 80; Postprocessing SW: SEMCAD, V1.8 Build 186

Ch251/Hearing Aid Compatibility Test (101x101x1): Measurement grid: dx=5mm, dy=5mm

Maximum value of peak Total field = 0.151 A/m
Probe Modulation Factor = 1.50
Device Reference Point: 0.000, 0.000, -6.30 mm
Reference Value = 0.102 A/m; Power Drift = -0.202 dB
Hearing Aid Near-Field Category: M4 (AWF -5 dB)

Peak H-field in A/m

Table with 3 columns (Grid 1-3, Grid 4-6, Grid 7-9) and 3 rows of peak H-field values in A/m, such as 0.202 M4, 0.181 M4, 0.123 M4, etc.





Test Laboratory: Sporton International Inc. SAR/HAC Testing Lab

Date: 2009/1/15

HAC_H_GSM1900_Ch512_Battery 1

DUT: 803106-01

Communication System: PCS; Frequency: 1850.2 MHz; Duty Cycle: 1:8.3
Medium: Air Medium parameters used: sigma = 0 mho/m, epsilon_r = 1; rho = 1 kg/m^3
Ambient Temperature : 22.8 C

DASY4 Configuration:

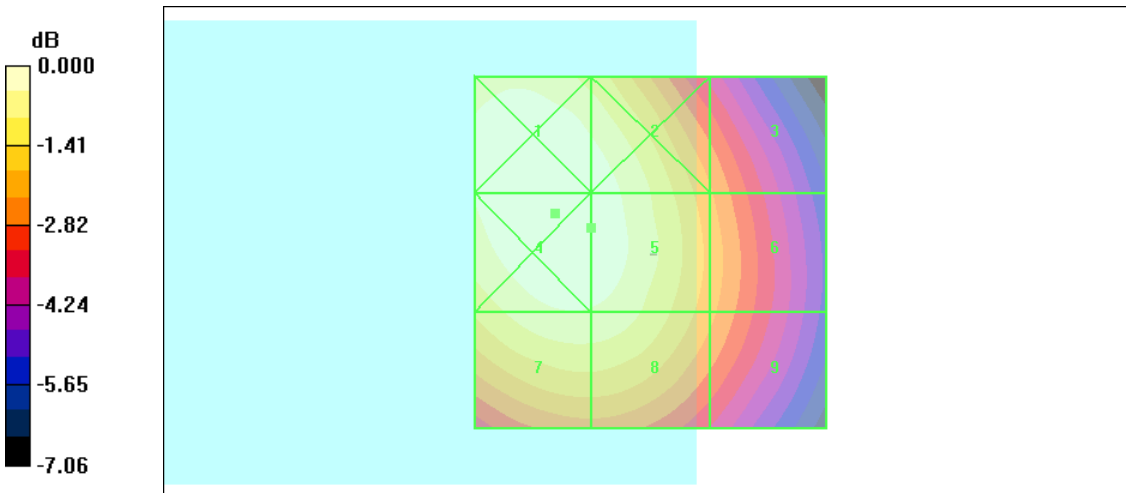
- Probe: H3DV6 - SN6076; ; Calibrated: 2008/8/22
- Sensor-Surface: (Fix Surface)
- Electronics: DAE3 Sn577; Calibrated: 2008/11/12
- Phantom: HAC Test Arch 4.6; Type: SD HAC P01 BA;
- Measurement SW: DASY4, V4.7 Build 71; Postprocessing SW: SEMCAD, V1.8 Build 184

Ch512/Hearing Aid Compatibility Test (101x101x1): Measurement grid: dx=5mm, dy=5mm

Maximum value of peak Total field = 0.140 A/m
Probe Modulation Factor = 1.38
Device Reference Point: 0.000, 0.000, 353.7 mm
Reference Value = 0.109 A/m; Power Drift = -0.014 dB
Hearing Aid Near-Field Category: M4 (AWF -5 dB)

Peak H-field in A/m

Table with 3 columns (Grid 1-3, Grid 4-6, Grid 7-9) and 3 rows of field strength values in A/m.



0 dB = 0.141A/m



Test Laboratory: Sporton International Inc. SAR/HAC Testing Lab

Date: 2009/1/15

HAC_H_GSM1900_Ch661_Battery 1

DUT: 803106-01

Communication System: PCS; Frequency: 1880 MHz; Duty Cycle: 1:8.3
Medium: Air Medium parameters used: sigma = 0 mho/m, epsilon_r = 1; rho = 1 kg/m^3
Ambient Temperature : 22.7 C

DASY4 Configuration:

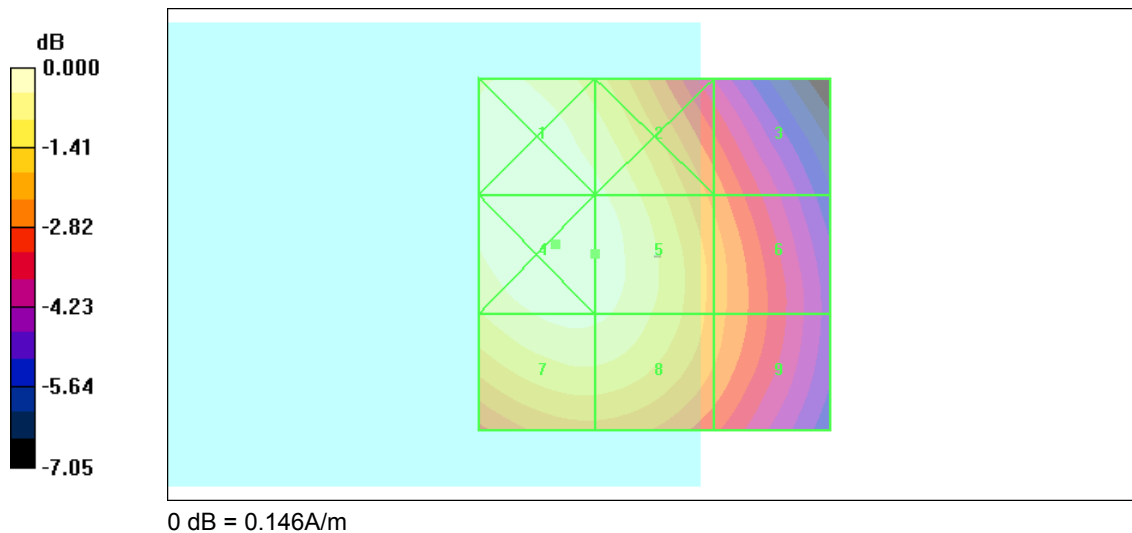
- Probe: H3DV6 - SN6076; ; Calibrated: 2008/8/22
- Sensor-Surface: (Fix Surface)
- Electronics: DAE3 Sn577; Calibrated: 2008/11/12
- Phantom: HAC Test Arch 4.6; Type: SD HAC P01 BA;
- Measurement SW: DASY4, V4.7 Build 71; Postprocessing SW: SEMCAD, V1.8 Build 184

Ch661/Hearing Aid Compatibility Test (101x101x1): Measurement grid: dx=5mm, dy=5mm

Maximum value of peak Total field = 0.143 A/m
Probe Modulation Factor = 1.38
Device Reference Point: 0.000, 0.000, 353.7 mm
Reference Value = 0.111 A/m; Power Drift = 0.056 dB
Hearing Aid Near-Field Category: M3 (AWF -5 dB)

Peak H-field in A/m

Table with 3 columns (Grid 1-3, Grid 4-6, Grid 7-9) and 3 rows of field strength data in A/m.





Test Laboratory: Sporton International Inc. SAR/HAC Testing Lab

Date: 2009/1/15

HAC_H_GSM1900_Ch810_Battery 1

DUT: 803106-01

Communication System: PCS; Frequency: 1909.8 MHz; Duty Cycle: 1:8.3
Medium: Air Medium parameters used: sigma = 0 mho/m, epsilon_r = 1; rho = 1 kg/m^3
Ambient Temperature : 22.7 C

DASY4 Configuration:

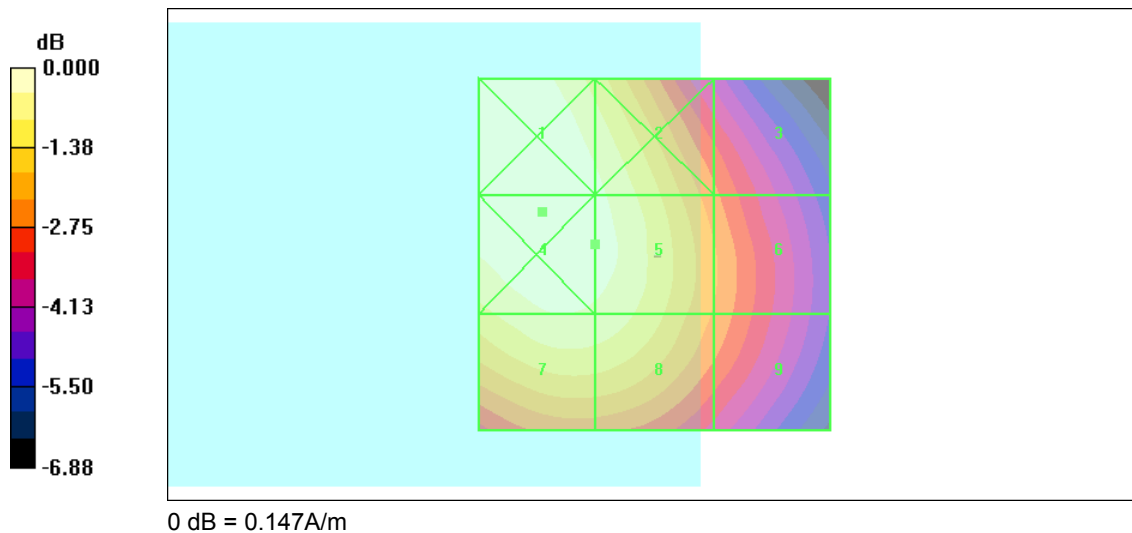
- Probe: H3DV6 - SN6076; ; Calibrated: 2008/8/22
- Sensor-Surface: (Fix Surface)
- Electronics: DAE3 Sn577; Calibrated: 2008/11/12
- Phantom: HAC Test Arch 4.6; Type: SD HAC P01 BA;
- Measurement SW: DASY4, V4.7 Build 71; Postprocessing SW: SEMCAD, V1.8 Build 184

Ch810/Hearing Aid Compatibility Test (101x101x1): Measurement grid: dx=5mm, dy=5mm

Maximum value of peak Total field = 0.144 A/m
Probe Modulation Factor = 1.38
Device Reference Point: 0.000, 0.000, 353.7 mm
Reference Value = 0.112 A/m; Power Drift = 0.017 dB
Hearing Aid Near-Field Category: M3 (AWF -5 dB)

Peak H-field in A/m

Table with 3 columns (Grid 1-3, Grid 4-6, Grid 7-9) and 3 rows of field strength data in A/m.





Test Laboratory: Sporton International Inc. SAR/HAC Testing Lab

Date: 2009/3/7

HAC_H_GSM1900 Ch810_Battery 2

DUT: 803106-07

Communication System: PCS; Frequency: 1909.8 MHz; Duty Cycle: 1:8.3
Medium: Air Medium parameters used: sigma = 0 mho/m, epsilon_r = 1; rho = 1 kg/m^3
Ambient Temperature : 22.3 C

DASY4 Configuration:

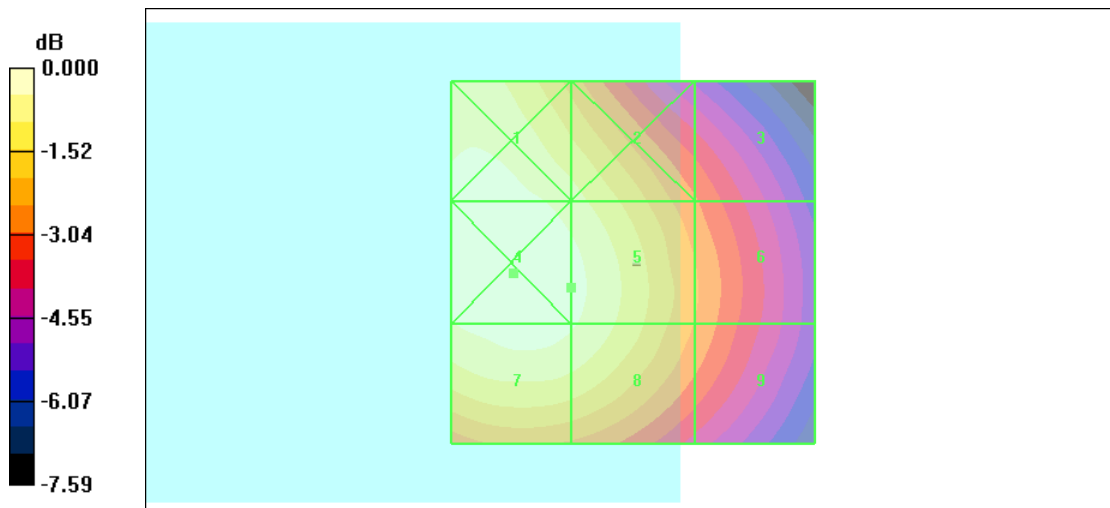
- Probe: H3DV6 - SN6076; ; Calibrated: 2008/8/22
- Sensor-Surface: (Fix Surface)
- Electronics: DAE3 Sn577; Calibrated: 2008/11/12
- Phantom: HAC Test Arch with AMCC; Type: SD HAC P01 BA;
- Measurement SW: DASY4, V4.7 Build 80; Postprocessing SW: SEMCAD, V1.8 Build 186

Ch810/Hearing Aid Compatibility Test (101x101x1): Measurement grid: dx=5mm, dy=5mm

Maximum value of peak Total field = 0.148 A/m
Probe Modulation Factor = 1.38
Device Reference Point: 0.000, 0.000, -6.30 mm
Reference Value = 0.110 A/m; Power Drift = 0.004 dB
Hearing Aid Near-Field Category: M3 (AWF -5 dB)

Peak H-field in A/m

Table with 3 columns (Grid 1-3, Grid 4-6, Grid 7-9) and 3 rows of field strength data in A/m.



0 dB = 0.151A/m



Test Laboratory: Sporton International Inc. SAR/HAC Testing Lab

Date: 2009/1/15

HAC_H_WCDMA850_Ch4132_Battery 1

DUT: 803106-01

Communication System: WCDMA; Frequency: 826.4 MHz; Duty Cycle: 1:1
Medium: Air Medium parameters used: sigma = 0 mho/m, epsilon_r = 1; rho = 1 kg/m^3
Ambient Temperature : 22.6 C

DASY4 Configuration:

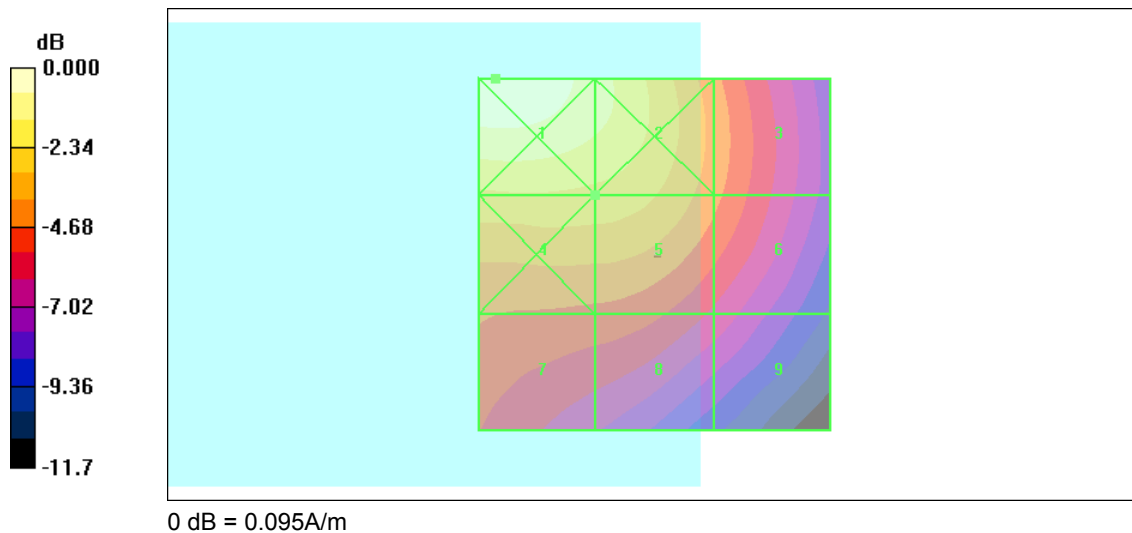
- Probe: H3DV6 - SN6076; ; Calibrated: 2008/8/22
- Sensor-Surface: (Fix Surface)
- Electronics: DAE3 Sn577; Calibrated: 2008/11/12
- Phantom: HAC Test Arch 4.6; Type: SD HAC P01 BA;
- Measurement SW: DASY4, V4.7 Build 71; Postprocessing SW: SEMCAD, V1.8 Build 184

Ch4132/Hearing Aid Compatibility Test (101x101x1): Measurement grid: dx=5mm, dy=5mm

Maximum value of peak Total field = 0.071 A/m
Probe Modulation Factor = 0.828
Device Reference Point: 0.000, 0.000, 353.7 mm
Reference Value = 0.088 A/m; Power Drift = 0.055 dB
Hearing Aid Near-Field Category: M4 (AWF 0 dB)

Peak H-field in A/m

Table with 3 columns (Grid 1-3, Grid 4-6, Grid 7-9) and 3 rows of peak H-field values in A/m, such as 0.095 M4, 0.083 M4, 0.059 M4, etc.





Test Laboratory: Sporton International Inc. SAR/HAC Testing Lab

Date: 2009/1/15

HAC_H_WCDMA850_Ch4182_Battery 1

DUT: 803106-01

Communication System: WCDMA; Frequency: 836.4 MHz; Duty Cycle: 1:1
Medium: Air Medium parameters used: sigma = 0 mho/m, epsilon_r = 1; rho = 1 kg/m^3
Ambient Temperature : 22.6 C

DASY4 Configuration:

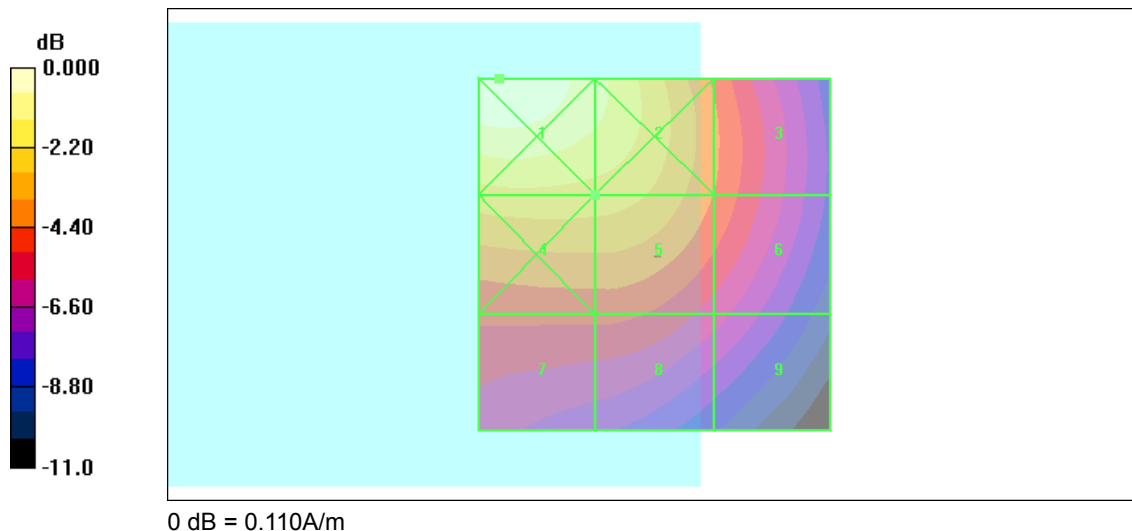
- Probe: H3DV6 - SN6076; ; Calibrated: 2008/8/22
- Sensor-Surface: (Fix Surface)
- Electronics: DAE3 Sn577; Calibrated: 2008/11/12
- Phantom: HAC Test Arch 4.6; Type: SD HAC P01 BA;
- Measurement SW: DASY4, V4.7 Build 71; Postprocessing SW: SEMCAD, V1.8 Build 184

Ch4182/Hearing Aid Compatibility Test (101x101x1): Measurement grid: dx=5mm, dy=5mm

Maximum value of peak Total field = 0.082 A/m
Probe Modulation Factor = 0.828
Device Reference Point: 0.000, 0.000, 353.7 mm
Reference Value = 0.102 A/m; Power Drift = 0.060 dB
Hearing Aid Near-Field Category: M4 (AWF 0 dB)

Peak H-field in A/m

Table with 3 columns (Grid 1-3, Grid 4-6, Grid 7-9) and 3 rows of field strength values in A/m.





Test Laboratory: Sporton International Inc. SAR/HAC Testing Lab

Date: 2009/1/15

HAC_H_WCDMA850_Ch4233_Battery 1

DUT: 803106-01

Communication System: WCDMA; Frequency: 846.6 MHz; Duty Cycle: 1:1
Medium: Air Medium parameters used: sigma = 0 mho/m, epsilon_r = 1; rho = 1 kg/m^3
Ambient Temperature : 22.7 C

DASY4 Configuration:

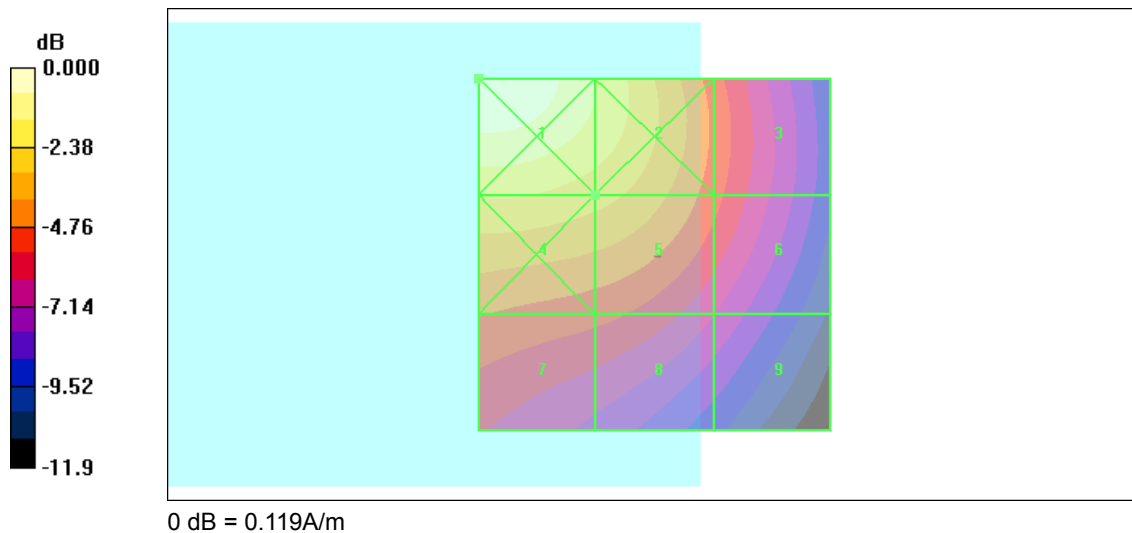
- Probe: H3DV6 - SN6076; ; Calibrated: 2008/8/22
- Sensor-Surface: (Fix Surface)
- Electronics: DAE3 Sn577; Calibrated: 2008/11/12
- Phantom: HAC Test Arch 4.6; Type: SD HAC P01 BA;
- Measurement SW: DASY4, V4.7 Build 71; Postprocessing SW: SEMCAD, V1.8 Build 184

Ch4233/Hearing Aid Compatibility Test (101x101x1): Measurement grid: dx=5mm, dy=5mm

Maximum value of peak Total field = 0.086 A/m
Probe Modulation Factor = 0.828
Device Reference Point: 0.000, 0.000, 353.7 mm
Reference Value = 0.103 A/m; Power Drift = -0.082 dB
Hearing Aid Near-Field Category: M4 (AWF 0 dB)

Peak H-field in A/m

Table with 3 columns (Grid 1-3, Grid 4-6, Grid 7-9) and 3 rows of peak H-field values in A/m, such as 0.119 M4, 0.100 M4, 0.068 M4, etc.





Test Laboratory: Sporton International Inc. SAR/HAC Testing Lab

Date: 2009/3/7

HAC_H_WCDMA850 Ch4233_Battery 2

DUT: 803106-07

Communication System: WCDMA; Frequency: 846.6 MHz;Duty Cycle: 1:1
Medium: Air Medium parameters used: sigma = 0 mho/m, epsilon_r = 1; rho = 1 kg/m^3
Ambient Temperature : 22.3 C

DASY4 Configuration:

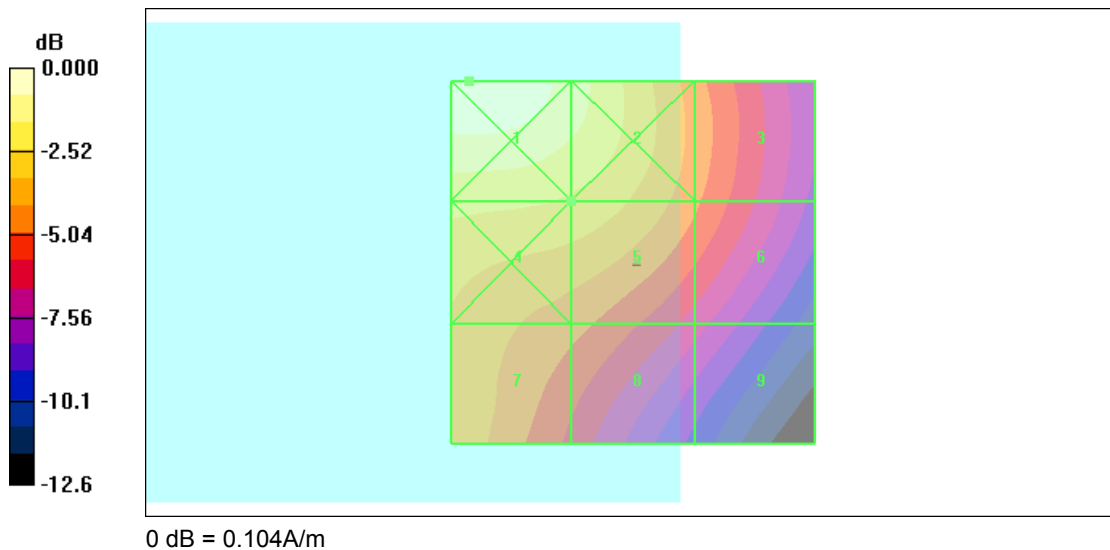
- Probe: H3DV6 - SN6076; ; Calibrated: 2008/8/22
- Sensor-Surface: (Fix Surface)
- Electronics: DAE3 Sn577; Calibrated: 2008/11/12
- Phantom: HAC Test Arch with AMCC; Type: SD HAC P01 BA;
- Measurement SW: DASY4, V4.7 Build 80; Postprocessing SW: SEMCAD, V1.8 Build 186

Ch4233/Hearing Aid Compatibility Test (101x101x1): Measurement grid: dx=5mm, dy=5mm

Maximum value of peak Total field = 0.077 A/m
Probe Modulation Factor = 0.828
Device Reference Point: 0.000, 0.000, -6.30 mm
Reference Value = 0.093 A/m; Power Drift = -0.074 dB
Hearing Aid Near-Field Category: M4 (AWF 0 dB)

Peak H-field in A/m

Table with 3 columns (Grid 1-3, Grid 4-6, Grid 7-9) and 3 rows of field strength values in M4.





Test Laboratory: Sporton International Inc. SAR/HAC Testing Lab

Date: 2009/1/15

HAC_H_WCDMA1900_Ch9262_Battery 1

DUT: 803106-01

Communication System: WCDMA; Frequency: 1852.4 MHz; Duty Cycle: 1:1
Medium: Air Medium parameters used: sigma = 0 mho/m, epsilon_r = 1; rho = 1 kg/m^3
Ambient Temperature : 22.5 C

DASY4 Configuration:

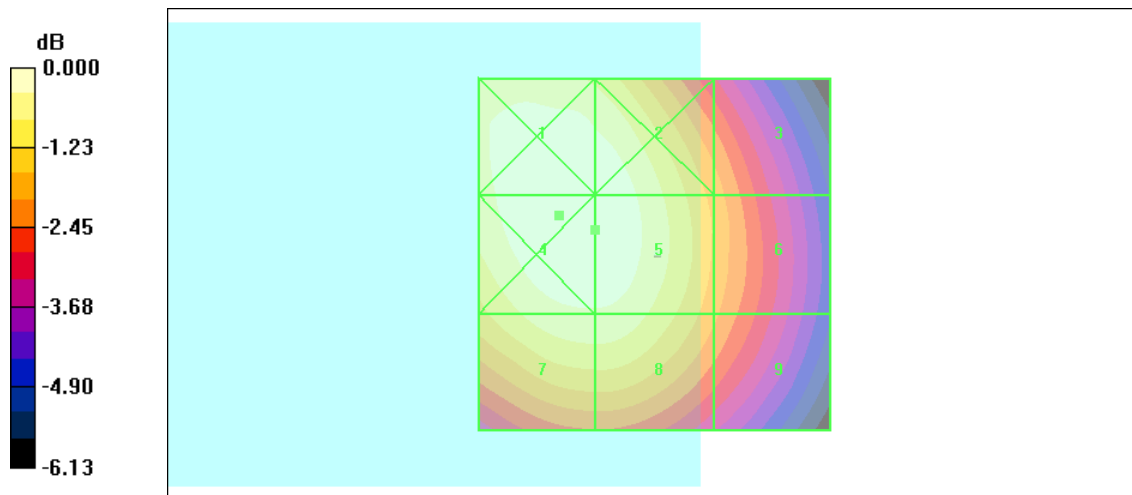
- Probe: H3DV6 - SN6076; ; Calibrated: 2008/8/22
- Sensor-Surface: (Fix Surface)
- Electronics: DAE3 Sn577; Calibrated: 2008/11/12
- Phantom: HAC Test Arch 4.6; Type: SD HAC P01 BA;
- Measurement SW: DASY4, V4.7 Build 71; Postprocessing SW: SEMCAD, V1.8 Build 184

Ch9262/Hearing Aid Compatibility Test (101x101x1): Measurement grid: dx=5mm, dy=5mm

Maximum value of peak Total field = 0.075 A/m
Probe Modulation Factor = 0.524
Device Reference Point: 0.000, 0.000, 353.7 mm
Reference Value = 0.152 A/m; Power Drift = 0.163 dB
Hearing Aid Near-Field Category: M4 (AWF 0 dB)

Peak H-field in A/m

Table with 3 columns (Grid 1-3, Grid 4-6, Grid 7-9) and 3 rows of field strength values in A/m.



0 dB = 0.075A/m



Test Laboratory: Sporton International Inc. SAR/HAC Testing Lab

Date: 2009/1/15

HAC_H_WCDMA1900_Ch9400_Battery 1

DUT: 803106-01

Communication System: WCDMA; Frequency: 1880 MHz;Duty Cycle: 1:1
Medium: Air Medium parameters used: sigma = 0 mho/m, epsilon_r = 1; rho = 1 kg/m^3
Ambient Temperature : 22.7 C

DASY4 Configuration:

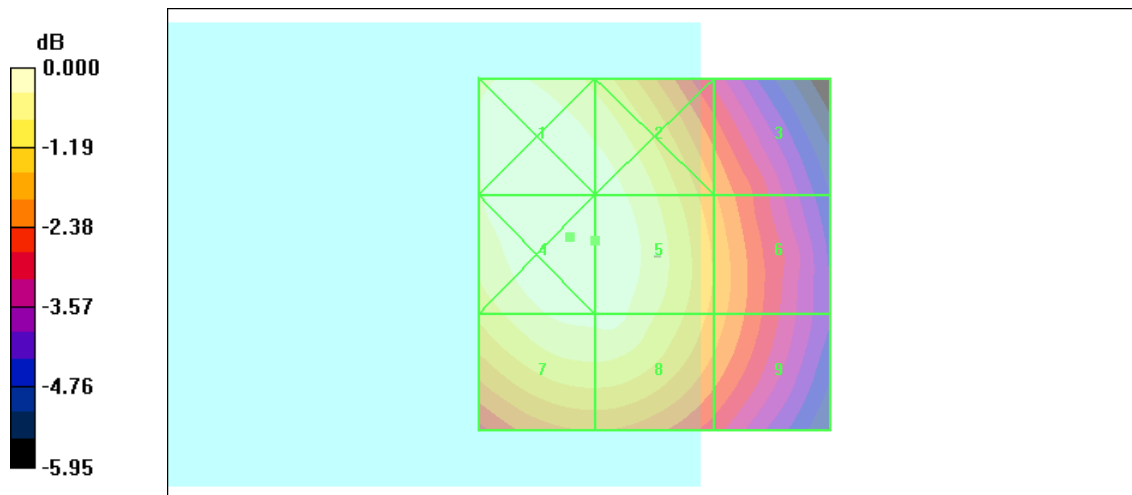
- Probe: H3DV6 - SN6076; ; Calibrated: 2008/8/22
- Sensor-Surface: (Fix Surface)
- Electronics: DAE3 Sn577; Calibrated: 2008/11/12
- Phantom: HAC Test Arch 4.6; Type: SD HAC P01 BA;
- Measurement SW: DASY4, V4.7 Build 71; Postprocessing SW: SEMCAD, V1.8 Build 184

Ch9400/Hearing Aid Compatibility Test (101x101x1): Measurement grid: dx=5mm, dy=5mm

Maximum value of peak Total field = 0.067 A/m
Probe Modulation Factor = 0.524
Device Reference Point: 0.000, 0.000, 353.7 mm
Reference Value = 0.137 A/m; Power Drift = 0.009 dB
Hearing Aid Near-Field Category: M4 (AWF 0 dB)

Peak H-field in A/m

Table with 3 columns (Grid 1-3, Grid 4-6, Grid 7-9) and 3 rows of field strength data in A/m.



0 dB = 0.067A/m



Test Laboratory: Sporton International Inc. SAR/HAC Testing Lab

Date: 2009/1/15

HAC_H_WCDMA1900_Ch9538_Battery 1

DUT: 803106-01

Communication System: WCDMA; Frequency: 1907.6 MHz; Duty Cycle: 1:1
Medium: Air Medium parameters used: sigma = 0 mho/m, epsilon_r = 1; rho = 1 kg/m^3
Ambient Temperature : 22.7 C

DASY4 Configuration:

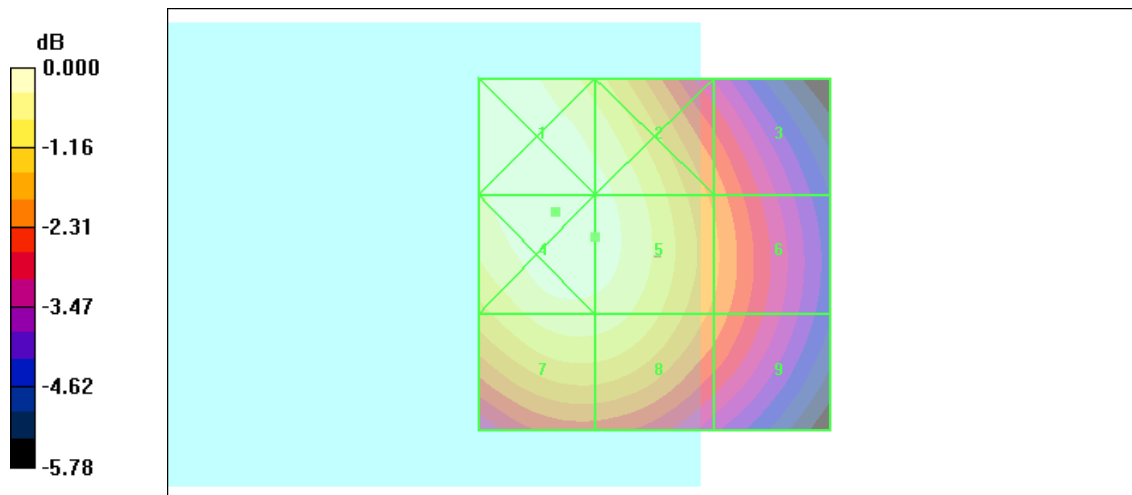
- Probe: H3DV6 - SN6076; ; Calibrated: 2008/8/22
- Sensor-Surface: (Fix Surface)
- Electronics: DAE3 Sn577; Calibrated: 2008/11/12
- Phantom: HAC Test Arch 4.6; Type: SD HAC P01 BA;
- Measurement SW: DASY4, V4.7 Build 71; Postprocessing SW: SEMCAD, V1.8 Build 184

Ch9538/Hearing Aid Compatibility Test (101x101x1): Measurement grid: dx=5mm, dy=5mm

Maximum value of peak Total field = 0.060 A/m
Probe Modulation Factor = 0.524
Device Reference Point: 0.000, 0.000, 353.7 mm
Reference Value = 0.122 A/m; Power Drift = 0.041 dB
Hearing Aid Near-Field Category: M4 (AWF 0 dB)

Peak H-field in A/m

Table with 3 columns (Grid 1-3, Grid 4-6, Grid 7-9) and 3 rows of peak H-field values in A/m, such as 0.060 M4, 0.059 M4, 0.048 M4, etc.



0 dB = 0.061A/m



Test Laboratory: Sporton International Inc. SAR/HAC Testing Lab

Date: 2009/3/7

HAC_H_WCDMA1900 Ch9262_Battery 2

DUT: 803106-07

Communication System: WCDMA; Frequency: 1852.4 MHz; Duty Cycle: 1:1
Medium: Air Medium parameters used: sigma = 0 mho/m, epsilon_r = 1; rho = 1 kg/m^3
Ambient Temperature : 22.2 C

DASY4 Configuration:

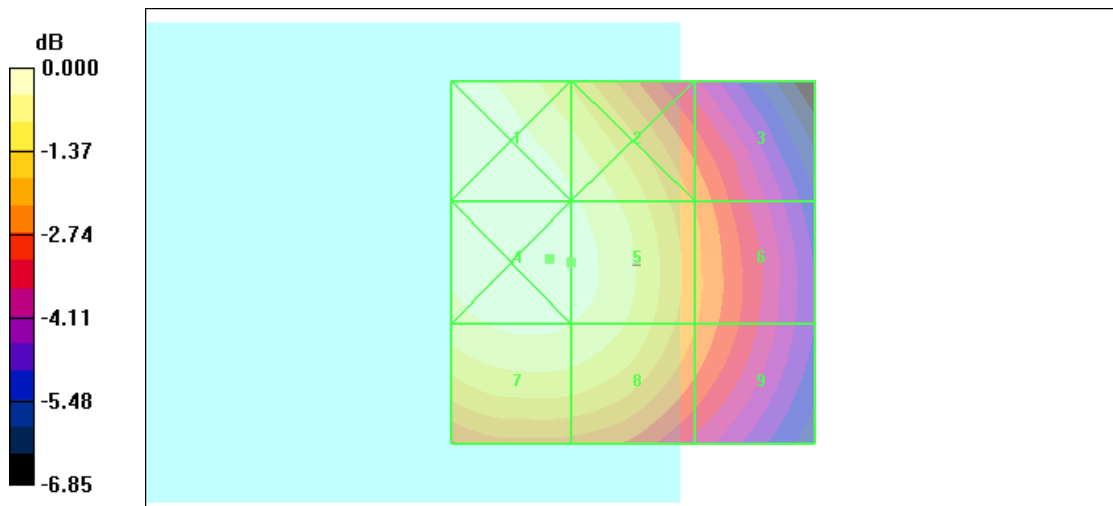
- Probe: H3DV6 - SN6076; ; Calibrated: 2008/8/22
- Sensor-Surface: (Fix Surface)
- Electronics: DAE3 Sn577; Calibrated: 2008/11/12
- Phantom: HAC Test Arch with AMCC; Type: SD HAC P01 BA;
- Measurement SW: DASY4, V4.7 Build 80; Postprocessing SW: SEMCAD, V1.8 Build 186

Ch9262/Hearing Aid Compatibility Test (101x101x1): Measurement grid: dx=5mm, dy=5mm

Maximum value of peak Total field = 0.068 A/m
Probe Modulation Factor = 0.524
Device Reference Point: 0.000, 0.000, -6.30 mm
Reference Value = 0.136 A/m; Power Drift = 0.041 dB
Hearing Aid Near-Field Category: M4 (AWF 0 dB)

Peak H-field in A/m

Table with 3 columns (Grid 1-3, Grid 4-6, Grid 7-9) and 3 rows of peak H-field values in A/m.



0 dB = 0.069A/m



Appendix C – Calibration Data

Please refer to the calibration certificates of DASY as below.