

Symbol DP4046 W/Primary Antenna

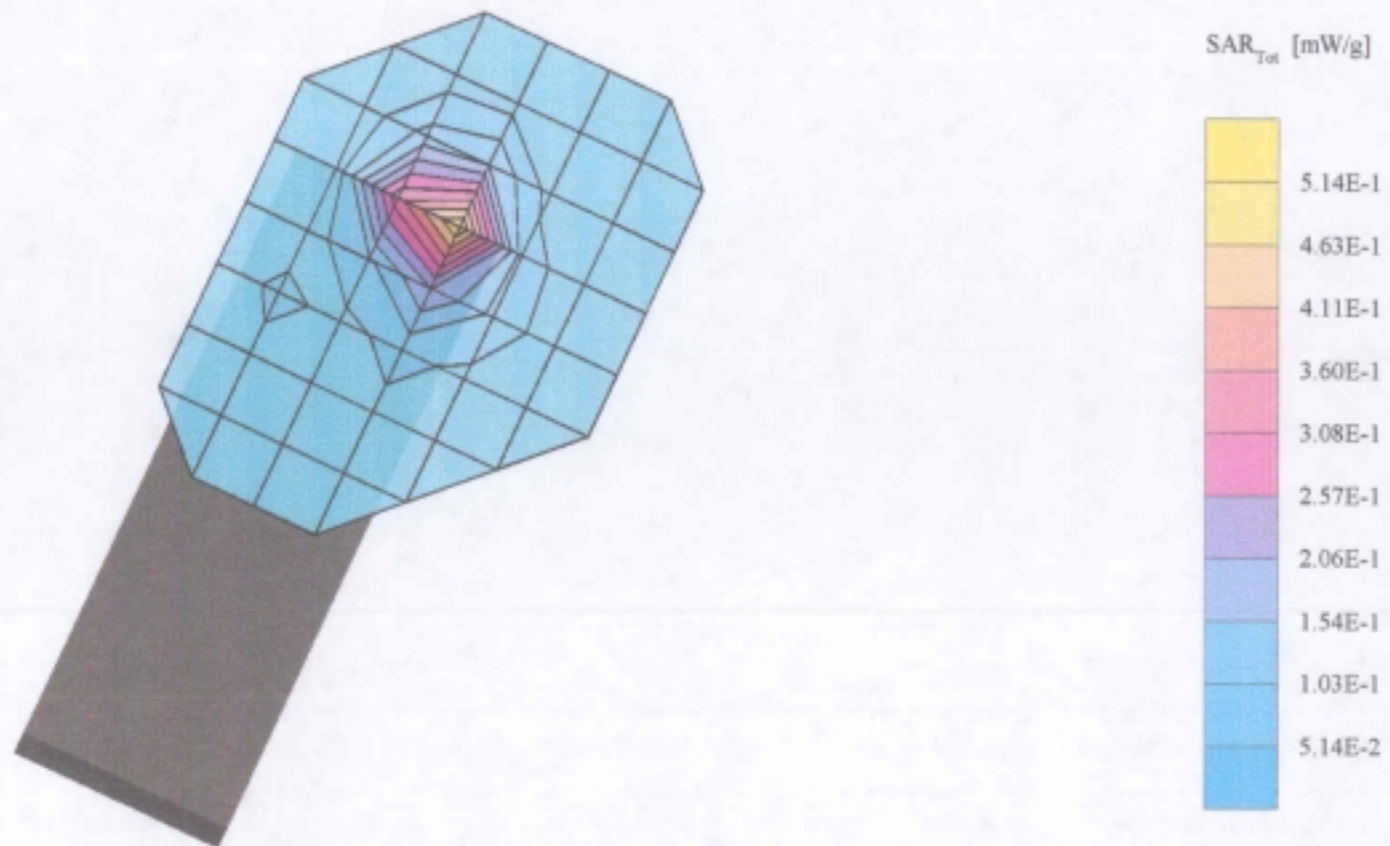
Generic Twin Phantom; Left Hand _X Section; Position: (80°,65°); Frequency: 2412 MHz

Probe: ET3DV5 - SN1333; ConvF(5.03,5.03,5.03); Crest factor: 1.0; Brain 2440MHz: $\sigma = 2.24$ mho/m $\epsilon_r = 50.6$ $\rho = 1.00$ g/cm³

Cube 5x5x7: SAR (1g): 0.628 mW/g, SAR (10g): 0.278 mW/g, (Worst-case extrapolation)

Coarse: Dx = 20.0, Dy = 20.0, Dz = 10.0

Powerdrift: 0.05 dB, One Touch



Symbol DP4046 W/Primary Antenna

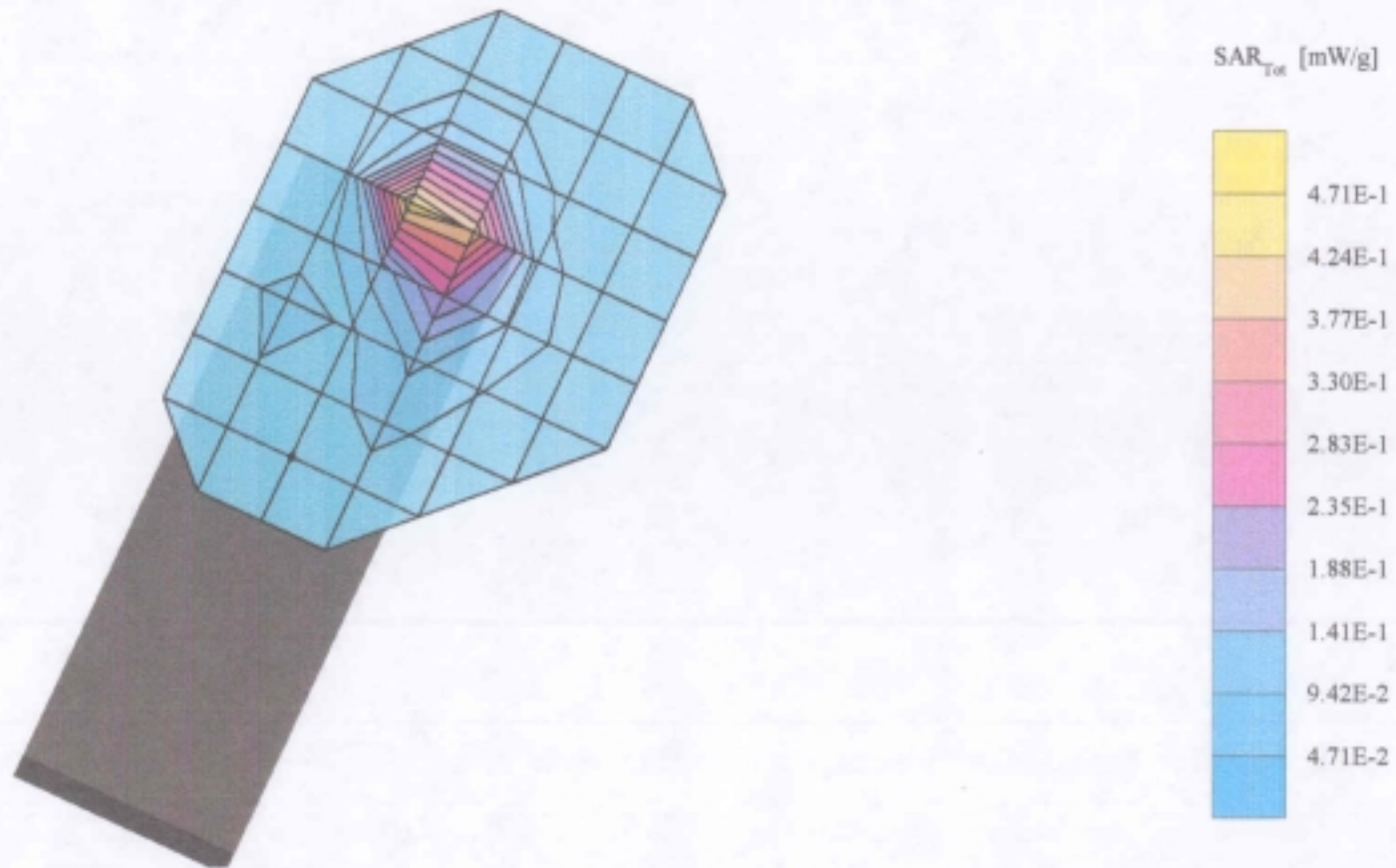
Generic Twin Phantom; Left Hand _X Section; Position: (80°,65°); Frequency: 2437 MHz

Probe: ET3DV5 - SN1333; ConvF(5.03,5.03,5.03); Crest factor: 1.0; Brain 2440MHz: $\sigma = 2.24$ mho/m $\epsilon_r = 50.6$ $\rho = 1.00$ g/cm³

Cube 5x5x7: SAR (1g): 0.632 mW/g, SAR (10g): 0.278 mW/g, (Worst-case extrapolation)

Coarse: Dx = 20.0, Dy = 20.0, Dz = 10.0

Powerdrift: 0.00 dB, one touch



Symbol DP4046 W/Primary Antenna

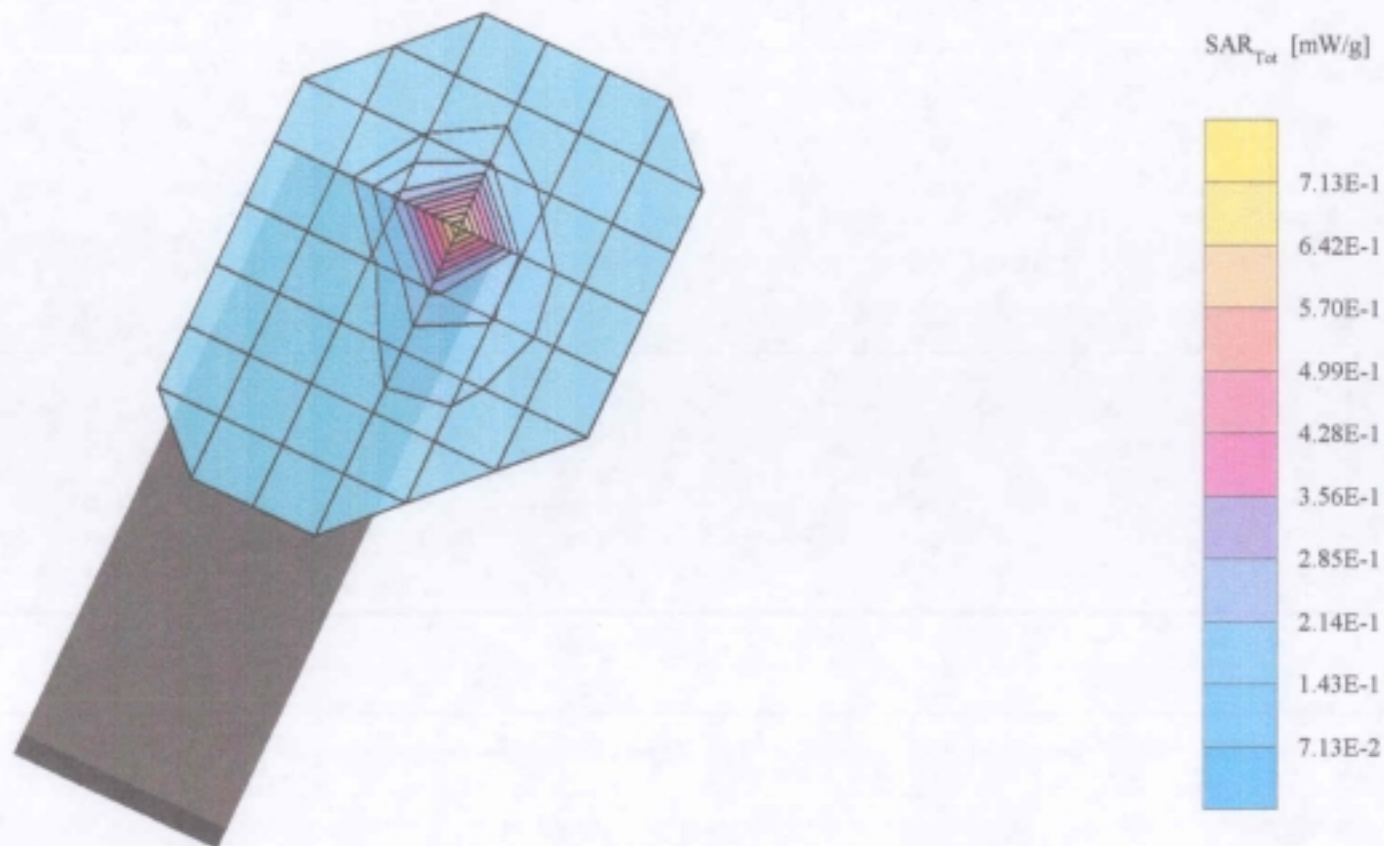
Generic Twin Phantom; Left Hand _X Section; Position: (80°,65°); Frequency: 2462 MHz

Probe: ET3DV5 - SN1333; ConvF(5.03,5.03,5.03); Crest factor: 1.0; Brain 2440MHz: $\sigma = 2.24$ mho/m $\epsilon_r = 50.6$ $\rho = 1.00$ g/cm³

Cube 5x5x7: SAR (1g): 0.706 mW/g, SAR (10g): 0.305 mW/g. (Worst-case extrapolation)

Coarse: Dx = 20.0, Dy = 20.0, Dz = 10.0

Powerdrift: -0.33 dB; One Touch



Symbol DP4046 W/Primary Antenna

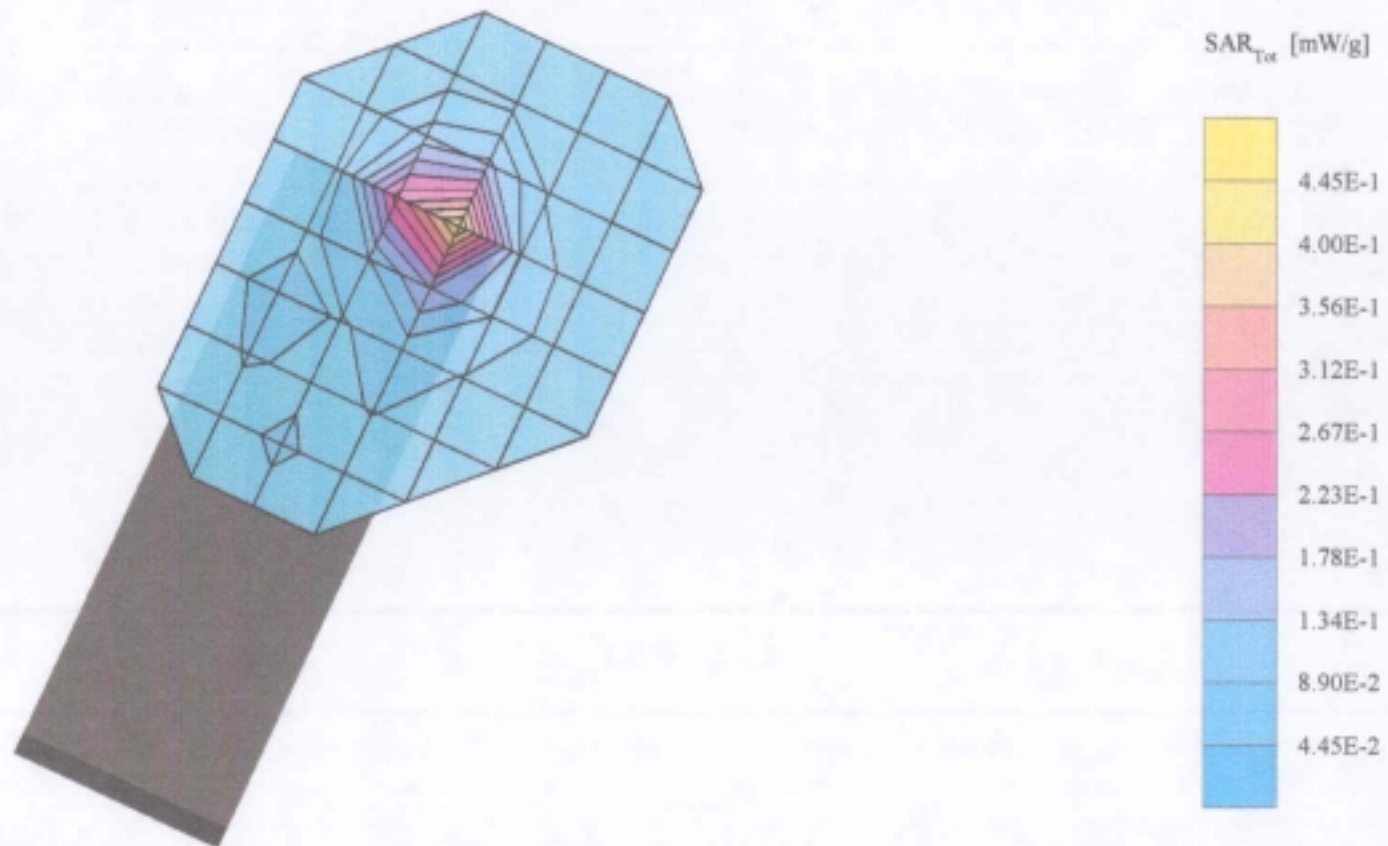
Generic Twin Phantom; Left Hand _X Section; Position: (80°,65°); Frequency: 2412 MHz

Probe: ET3DV5 - SN1333; ConvF(5.03,5.03,5.03); Crest factor: 1.0; Brain 2440MHz: $\sigma = 2.24$ mho/m $\epsilon_r = 50.6$ $\rho = 1.00$ g/cm³

Cube 5x5x7: SAR (1g): 0.527 mW/g, SAR (10g): 0.236 mW/g, (Worst-case extrapolation)

Coarse: Dx = 20.0, Dy = 20.0, Dz = 10.0

Powerdrift: -0.10 dB; Two Touch



Symbol DP4046 W/Primary Antenna

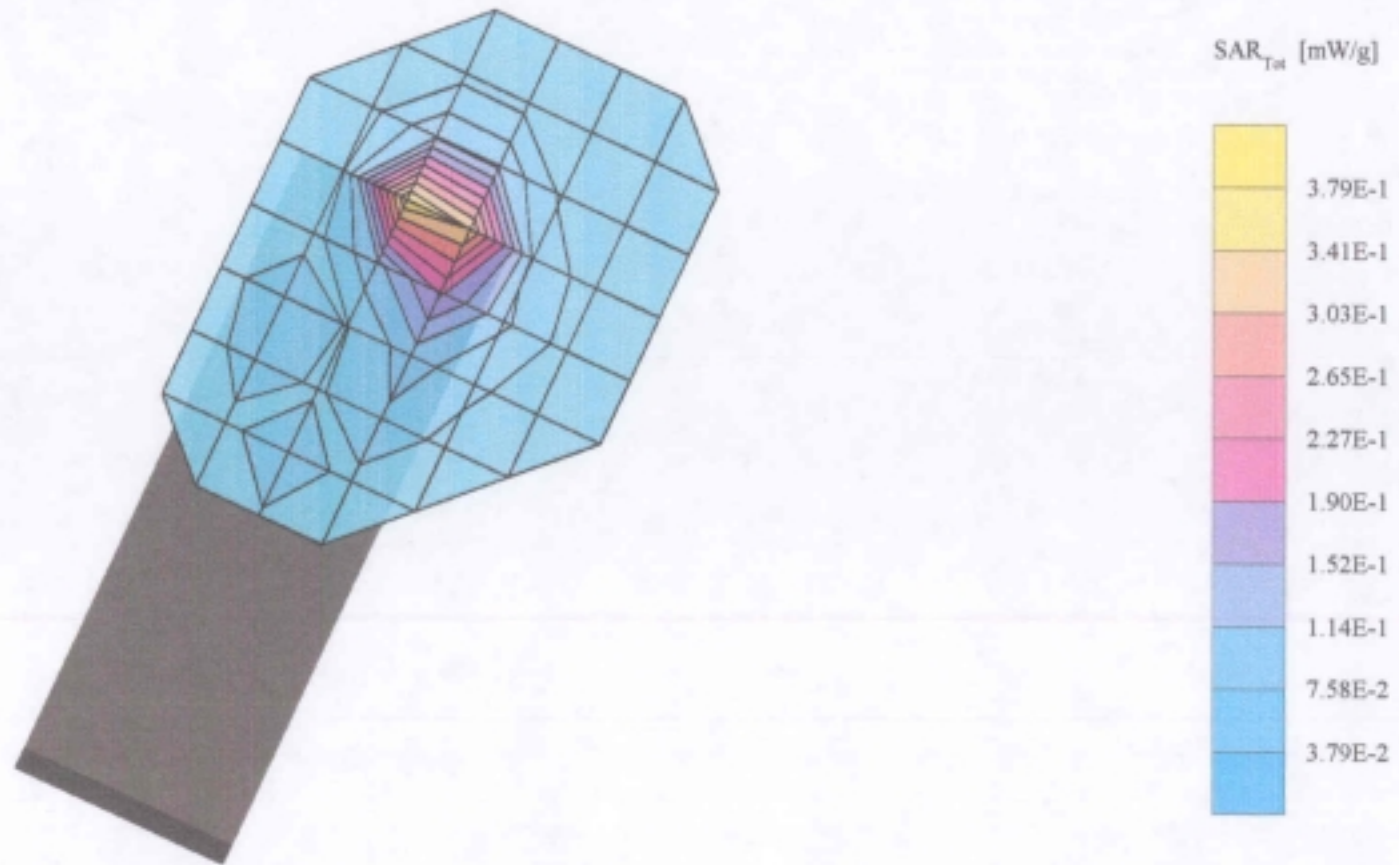
Generic Twin Phantom; Left Hand _X Section; Position: (80°,65°); Frequency: 2437 MHz

Probe: ET3DV5 - SN1333; ConvF(5.03,5.03,5.03); Crest factor: 1.0; Brain 2440MHz: $\sigma = 2.24$ mho/m $\epsilon_r = 50.6$ $\rho = 1.00$ g/cm³

Cube 5x5x7: SAR (1g): 0.492 mW/g, SAR (10g): 0.223 mW/g, (Worst-case extrapolation)

Coarse: Dx = 20.0, Dy = 20.0, Dz = 10.0

Powerdrift: -0.08 dB; Two Touch



Symbol DP4046 W/Primary Antenna

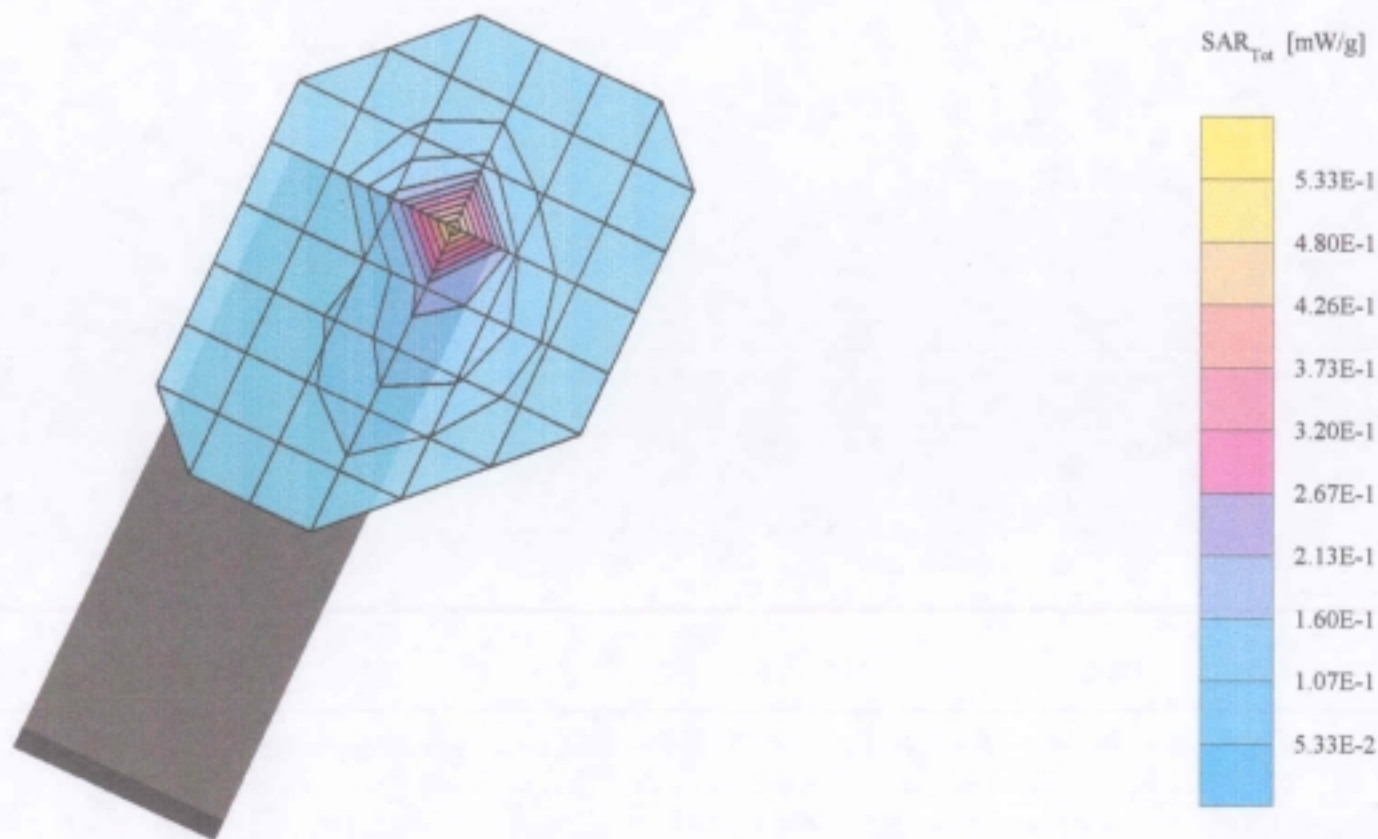
Generic Twin Phantom; Left Hand _X Section; Position: (80°,65°); Frequency: 2462 MHz

Probe: ET3DV5 - SN1333; ConvF(5.03,5.03,5.03); Crest factor: 1.0; Brain 2440MHz: $\sigma = 2.24$ mho/m $\epsilon_r = 50.6$ $\rho = 1.00$ g/cm³

Cube 5x5x7: SAR (1g): 0.525 mW/g, SAR (10g): 0.229 mW/g, (Worst-case extrapolation)

Coarse: Dx = 20.0, Dy = 20.0, Dz = 10.0

Powerdrift: 0.01 dB; Two Touch



Symbol DP4046 W/Primary Antenna

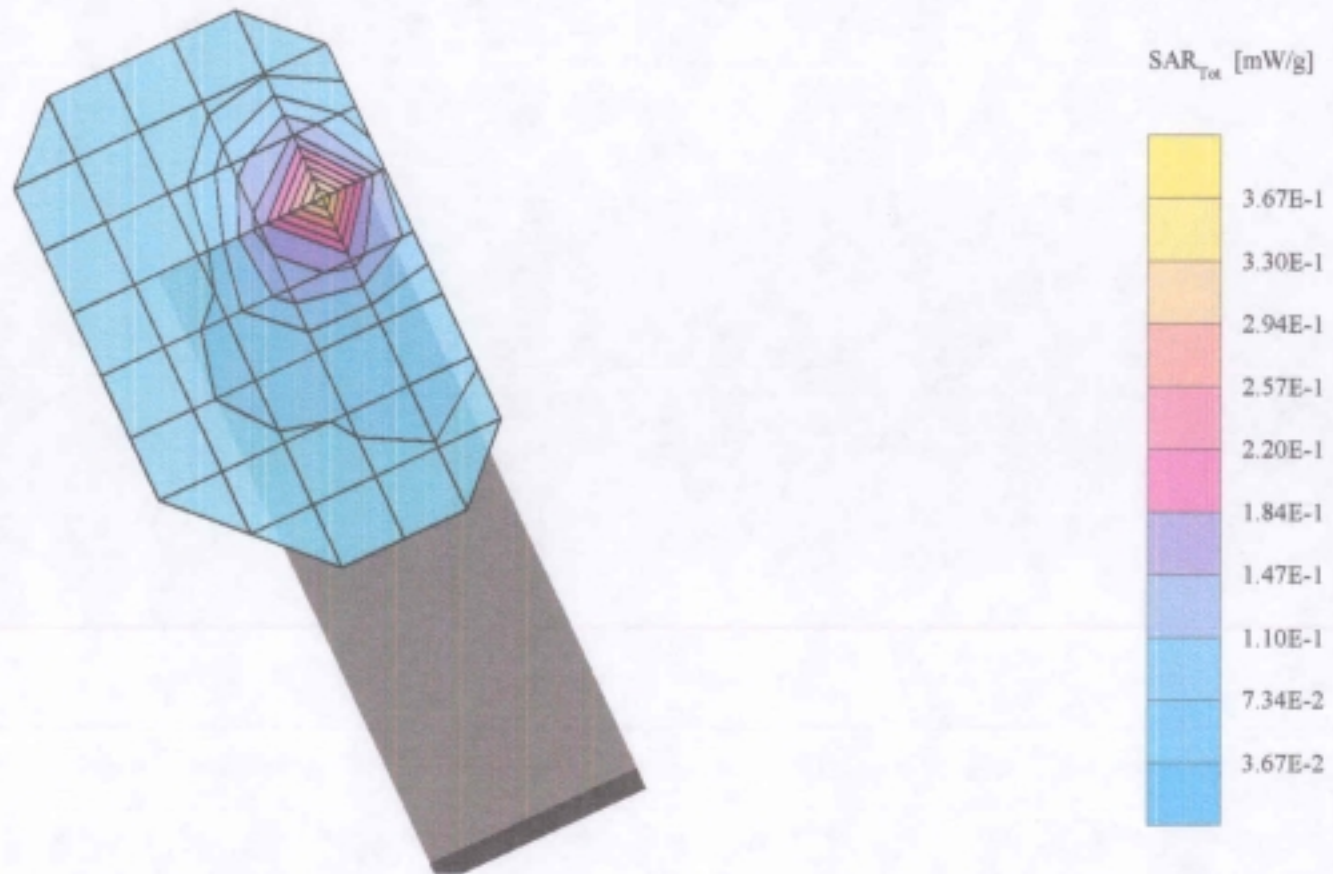
Generic Twin Phantom; Right Hand Section; Position: (80°,65°); Frequency: 2412 MHz

Probe: ET3DV5 - SN1333; ConvF(5.03,5.03,5.03); Crest factor: 1.0; Brain 2400 MHz: $\sigma = 2.30$ mho/m $\epsilon_r = 39.0$ $\rho = 1.00$ g/cm³

Cube 5x5x7: SAR (1g): 0.404 mW/g, SAR (10g): 0.182 mW/g, (Worst-case extrapolation)

Coarse: Dx = 20.0, Dy = 20.0, Dz = 10.0

Powerdrift: 0.09 dB, one Touch



Symbol DP4046 W/Primary Antenna

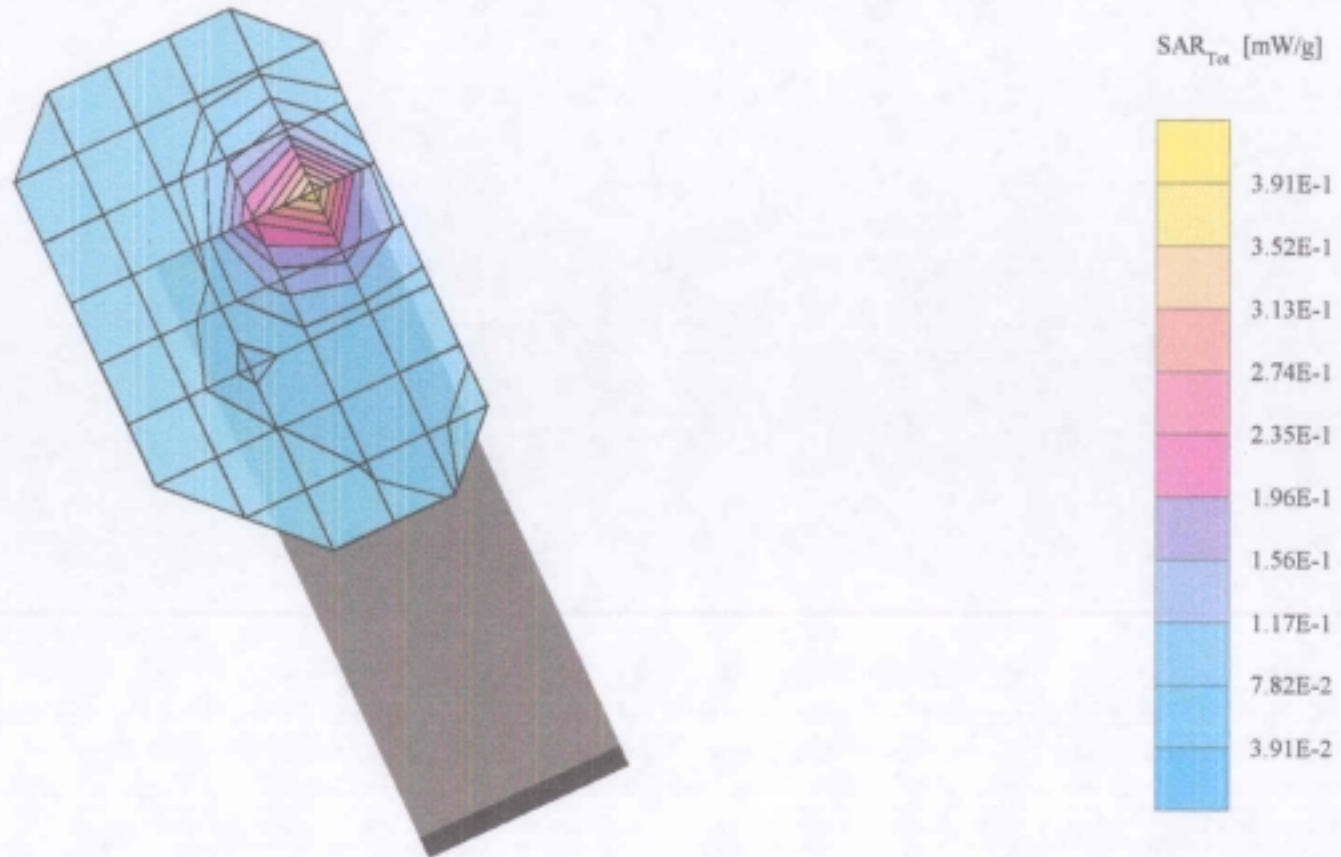
Generic Twin Phantom; Right Hand Section; Position: (80°,65°); Frequency: 2437 MHz

Probe: ET3DV5 - SN1333; ConvF(5.03,5.03,5.03); Crest factor: 1.0; Brain 2400 MHz: $\sigma = 2.30$ mho/m $\epsilon_r = 39.0$ $\rho = 1.00$ g/cm³

Cube 5x5x7: SAR (1g): 0.455 mW/g, SAR (10g): 0.204 mW/g, (Worst-case extrapolation)

Coarse: Dx = 20.0, Dy = 20.0, Dz = 10.0

Powerdrift: -0.02 dB; one Touch



Symbol DP4046 W/Primary Antenna

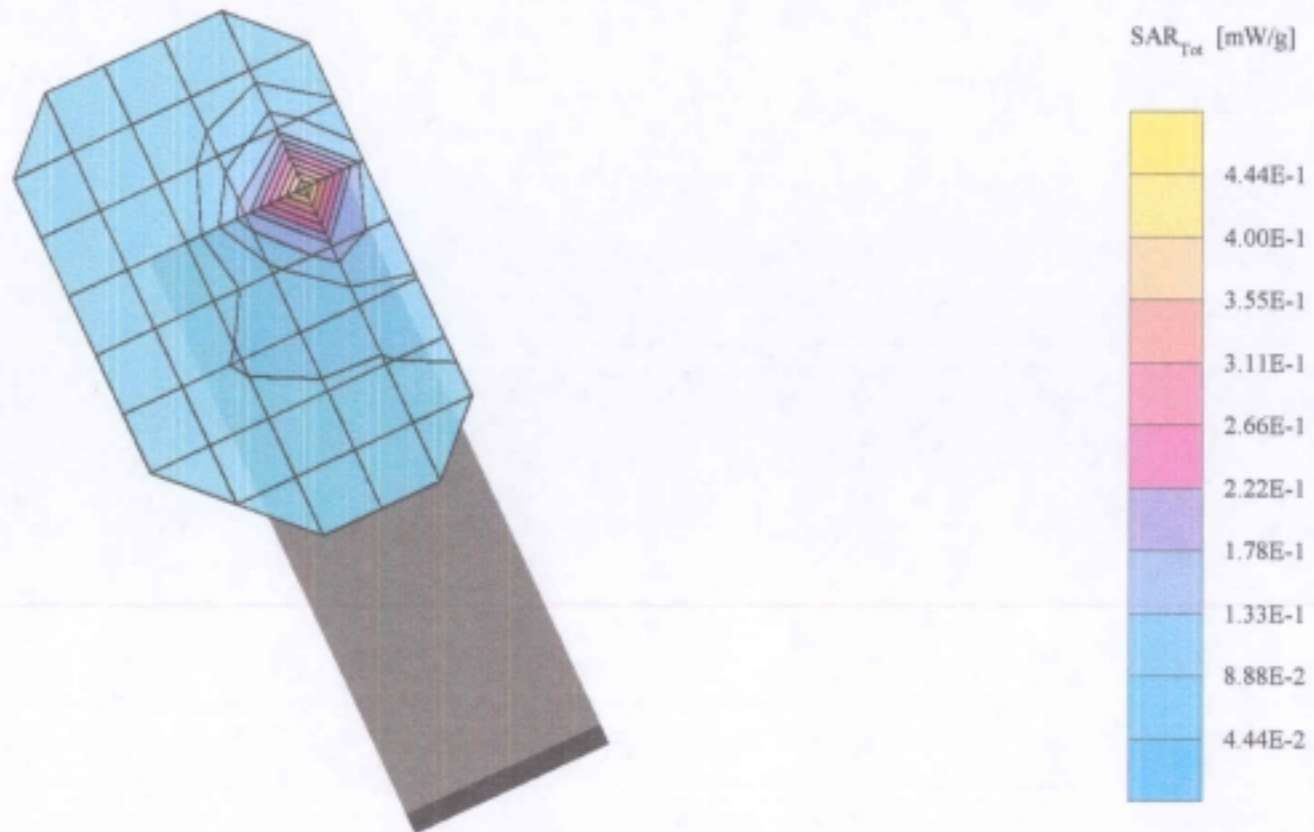
Generic Twin Phantom; Right Hand Section; Position: (80°,65°); Frequency: 2462 MHz

Probe: ET3DV5 - SN1333; ConvF(5.03,5.03,5.03); Crest factor: 1.0; Brain 2440MHz: $\sigma = 2.24$ mho/m $\epsilon_r = 50.6$ $\rho = 1.00$ g/cm³

Cube 5x5x7; SAR (1g): 0.457 mW/g, SAR (10g): 0.204 mW/g, (Worst-case extrapolation)

Coarse: Dx = 20.0, Dy = 20.0, Dz = 10.0

Powerdrift: 0.06 dB; One Touch



Symbol DP4046 W/Primary Antenna

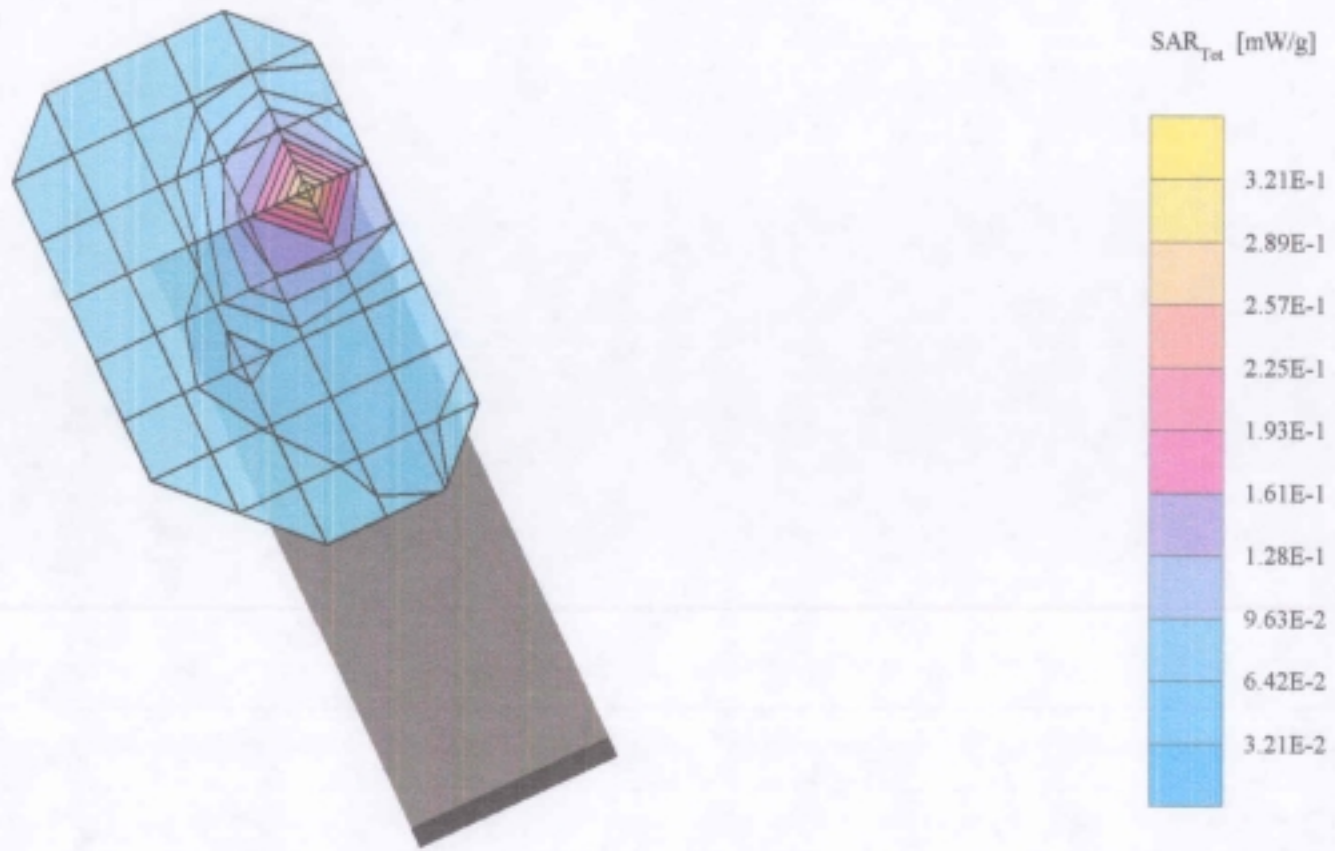
Generic Twin Phantom; Right Hand Section; Position: (80°,65°), Frequency: 2412 MHz

Probe: ET3DV5 - SN1333; ConvF(5.03,5.03,5.03); Crest factor: 1.0; Brain 2400 MHz: $\sigma = 2.30$ mho/m $\epsilon_r = 39.0$ $\rho = 1.00$ g/cm³

Cube 5x5x7: SAR (1g): 0.349 mW/g, SAR (10g): 0.161 mW/g, (Worst-case extrapolation)

Coarse: Dx = 20.0, Dy = 20.0, Dz = 10.0

Powerdrift: 0.01 dB, Two Touch



Symbol DP4046 W/Primary Antenna

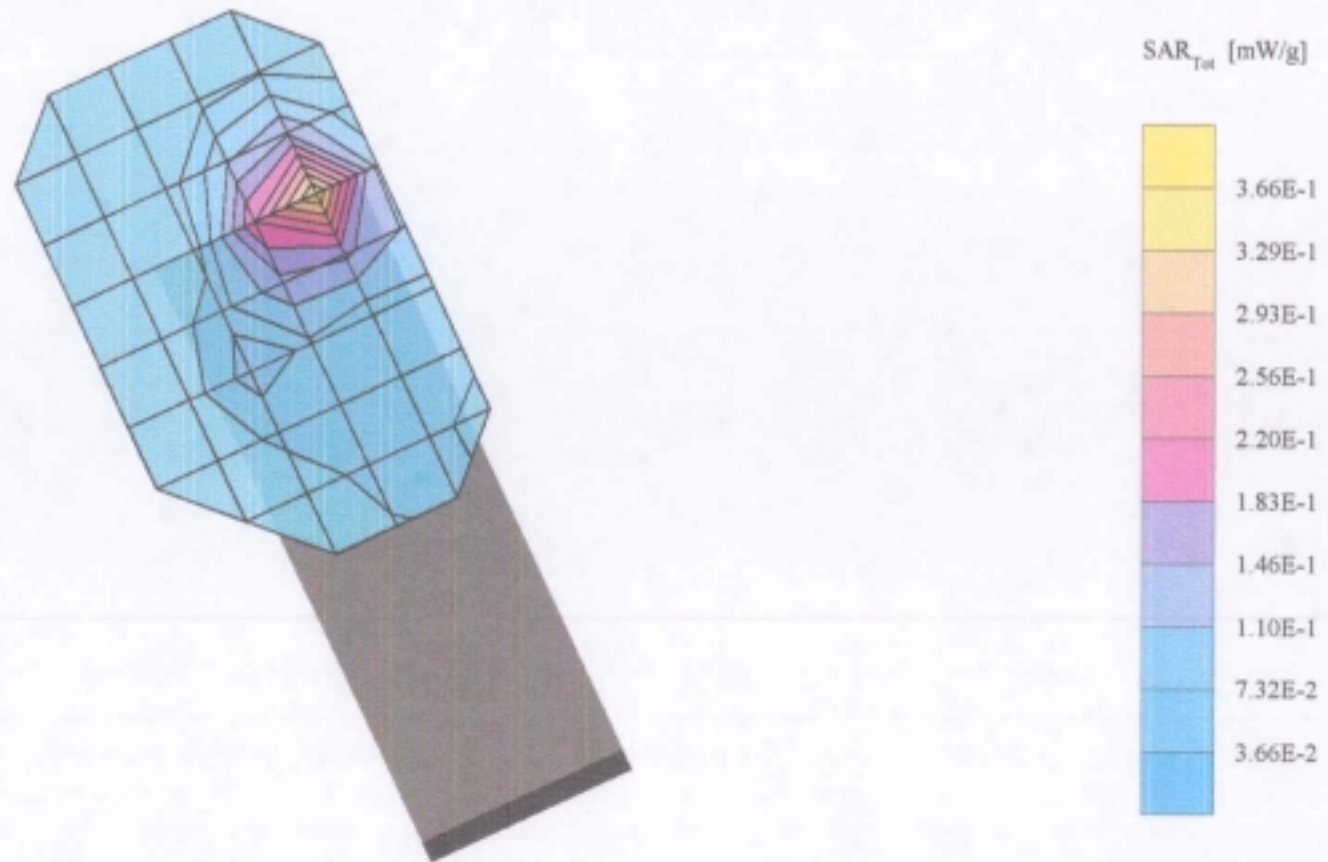
Generic Twin Phantom; Right Hand Section; Position: (80°,65°); Frequency: 2437 MHz

Probe: ET3DV5 - SN1333; ConvF(5.03,5.03,5.03); Crest factor: 1.0; Brain 2400 MHz: $\sigma = 2.30$ mho/m $\epsilon_r = 39.0$ $\rho = 1.00$ g/cm³

Cube 5x5x7: SAR (1g): 0.423 mW/g, SAR (10g): 0.192 mW/g, (Worst-case extrapolation)

Coarse: Dx = 20.0, Dy = 20.0, Dz = 10.0

Powerdrift: -0.08 dB, Two Touch



Symbol DP4046 W/Primary Antenna

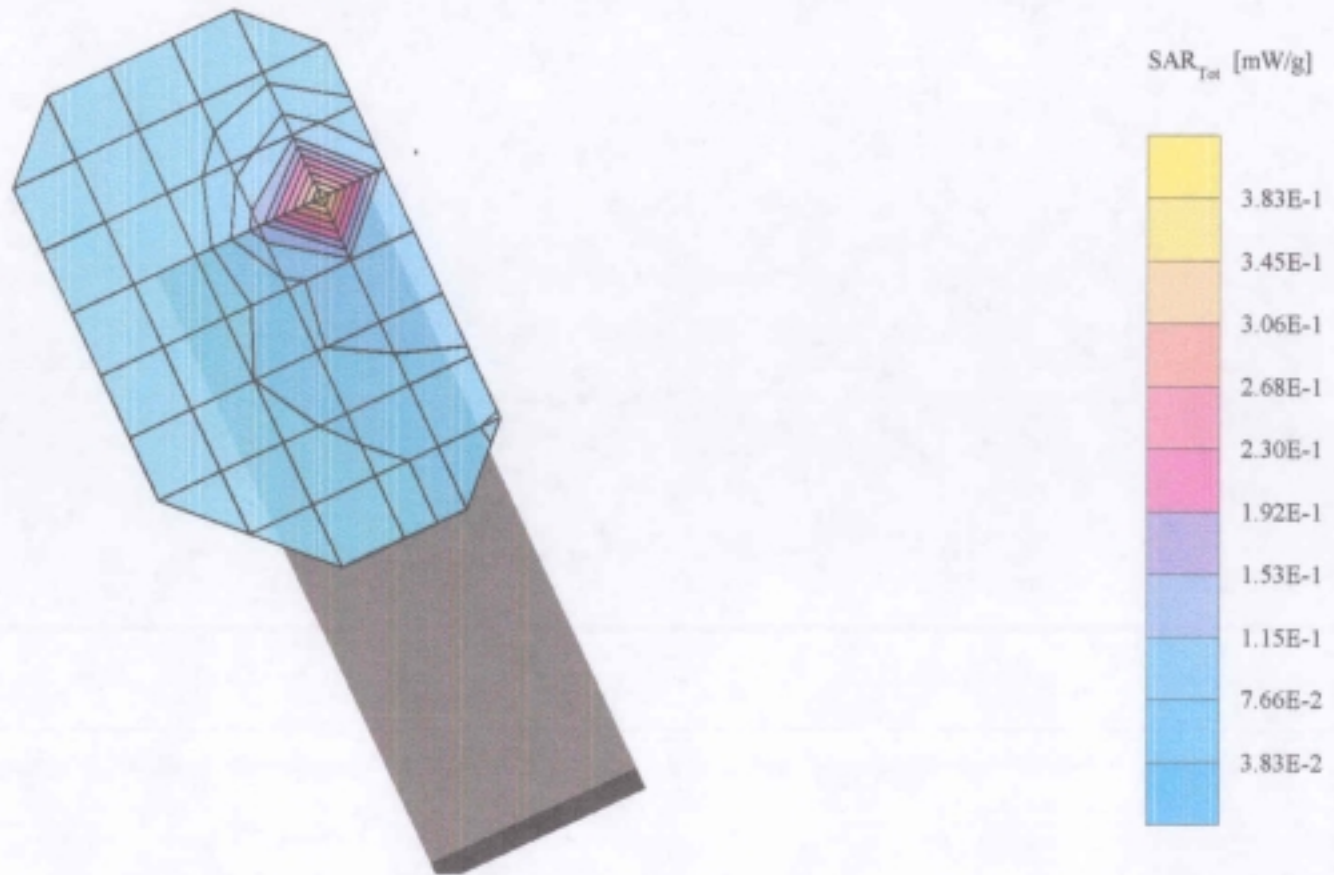
Generic Twin Phantom; Right Hand Section; Position: (80°,65°); Frequency: 2462 MHz

Probe: ET3DV5 - SN1333; ConvF(5.03,5.03,5.03); Crest factor: 1.0; Brain 2440MHz: $\sigma = 2.24$ mho/m $\epsilon_r = 50.6$ $\rho = 1.00$ g/cm³

Cube 5x5x7: SAR (1g): 0.394 mW/g, SAR (10g): 0.174 mW/g * Max outside, (Worst-case extrapolation)

Coarse: Dx = 20.0, Dy = 20.0, Dz = 10.0

Powerdrift: -0.03 dB; Two touch



Symbol DP4046 W/Primary Antenna

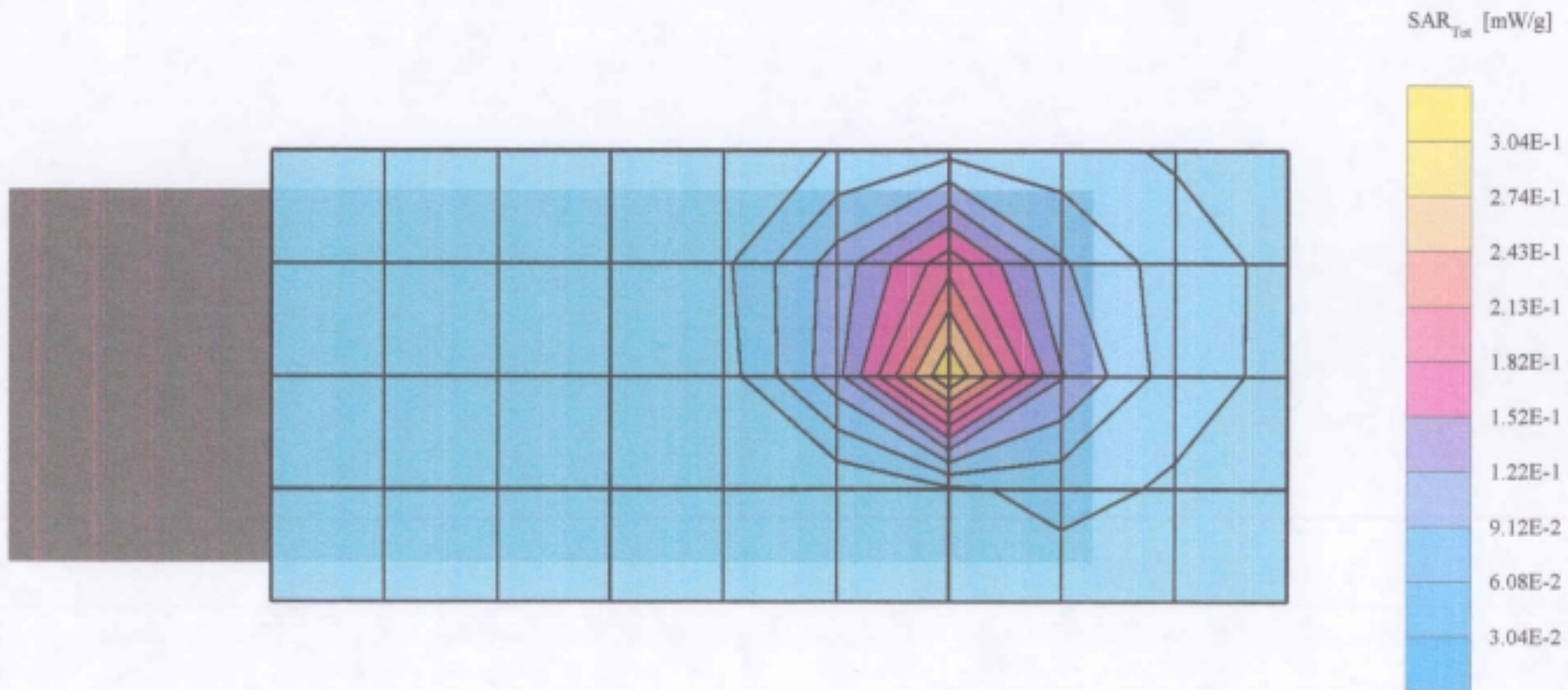
Generic Twin Phantom; Flat Section; Position: (90°,90°); Frequency: 2412 MHz

Probe: ET3DV5 - SN1333; ConvF(5.03,5.03,5.03); Crest factor: 1.0; Muscle 2440 MHz: $\sigma = 2.36$ mho/m $\epsilon_r = 51.2$ $\rho = 1.00$ g/cm³

Cube 5x5x7: SAR (1g): 0.366 mW/g, SAR (10g): 0.175 mW/g, (Worst-case extrapolation)

Coarse: Dx = 20.0, Dy = 20.0, Dz = 10.0

Powerdrift: -0.14 dB With belt Clip



Symbol DP4046 W/Primary Antenna

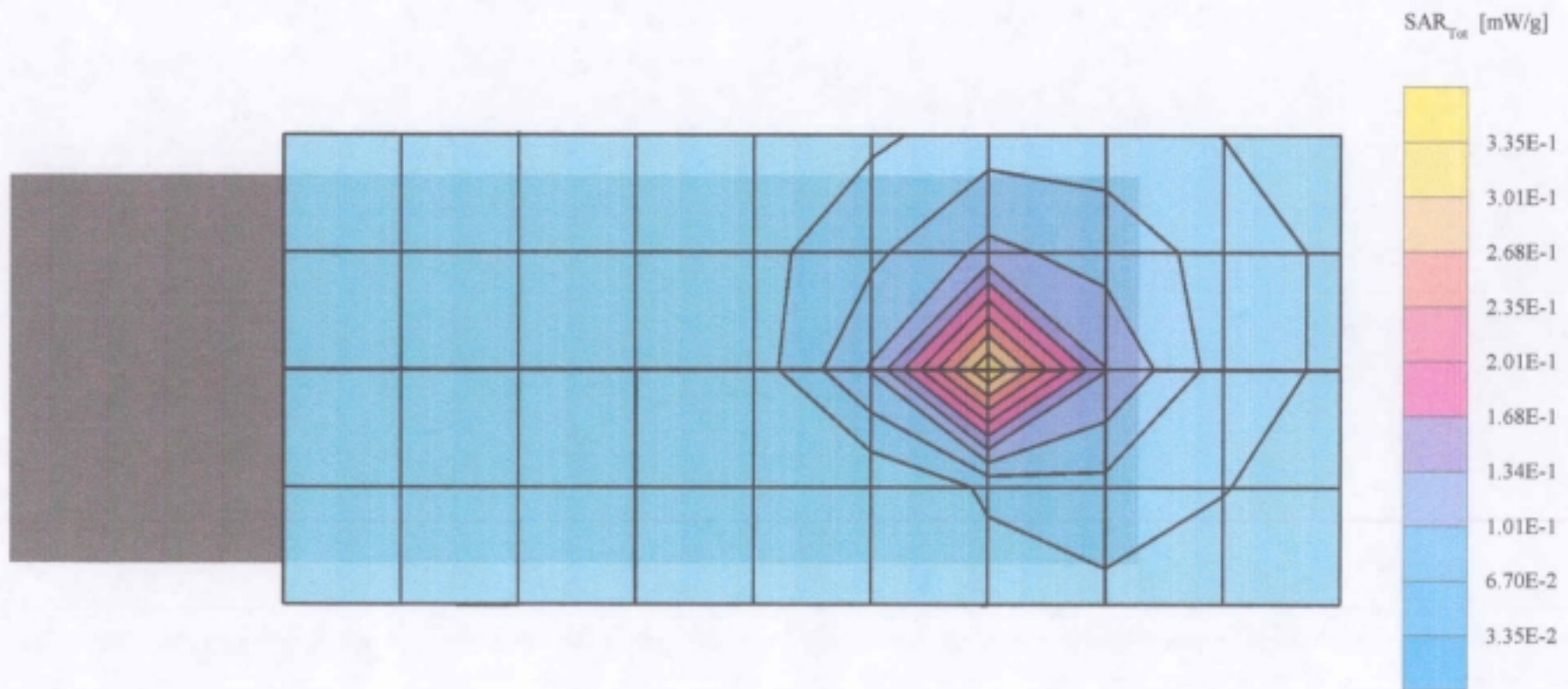
Generic Twin Phantom; Flat Section; Position: (90°,90°); Frequency: 2437 MHz

Probe: ET3DV5 - SN1333; ConvF(5.03,5.03,5.03); Crest factor: 1.0; Muscle 2440 MHz: $\sigma = 2.36$ mho/m $\epsilon_r = 51.2$ $\rho = 1.00$ g/cm³

Cube 5x5x7: SAR (1g): 0.342 mW/g, SAR (10g): 0.162 mW/g, (Worst-case extrapolation)

Coarse: Dx = 20.0, Dy = 20.0, Dz = 10.0

Powerdrift: 0.06 dB



Symbol DP4046 W/Primary Antenna

Generic Twin Phantom; Flat Section; Position: (90°,90°); Frequency: 2462 MHz

Probe: ET3DV5 - SN1333; ConvF(5.03,5.03,5.03); Crest factor: 1.0; Muscle 2440 MHz: $\sigma = 2.36$ mho/m $\epsilon_r = 51.2$ $\rho = 1.00$ g/cm³

Cube 5x5x7: SAR (1g): 0.285 mW/g, SAR (10g): 0.132 mW/g, (Worst-case extrapolation)

Coarse: Dx = 20.0, Dy = 20.0, Dz = 10.0

Powerdrift: -0.17 dB; With Belt Clip

