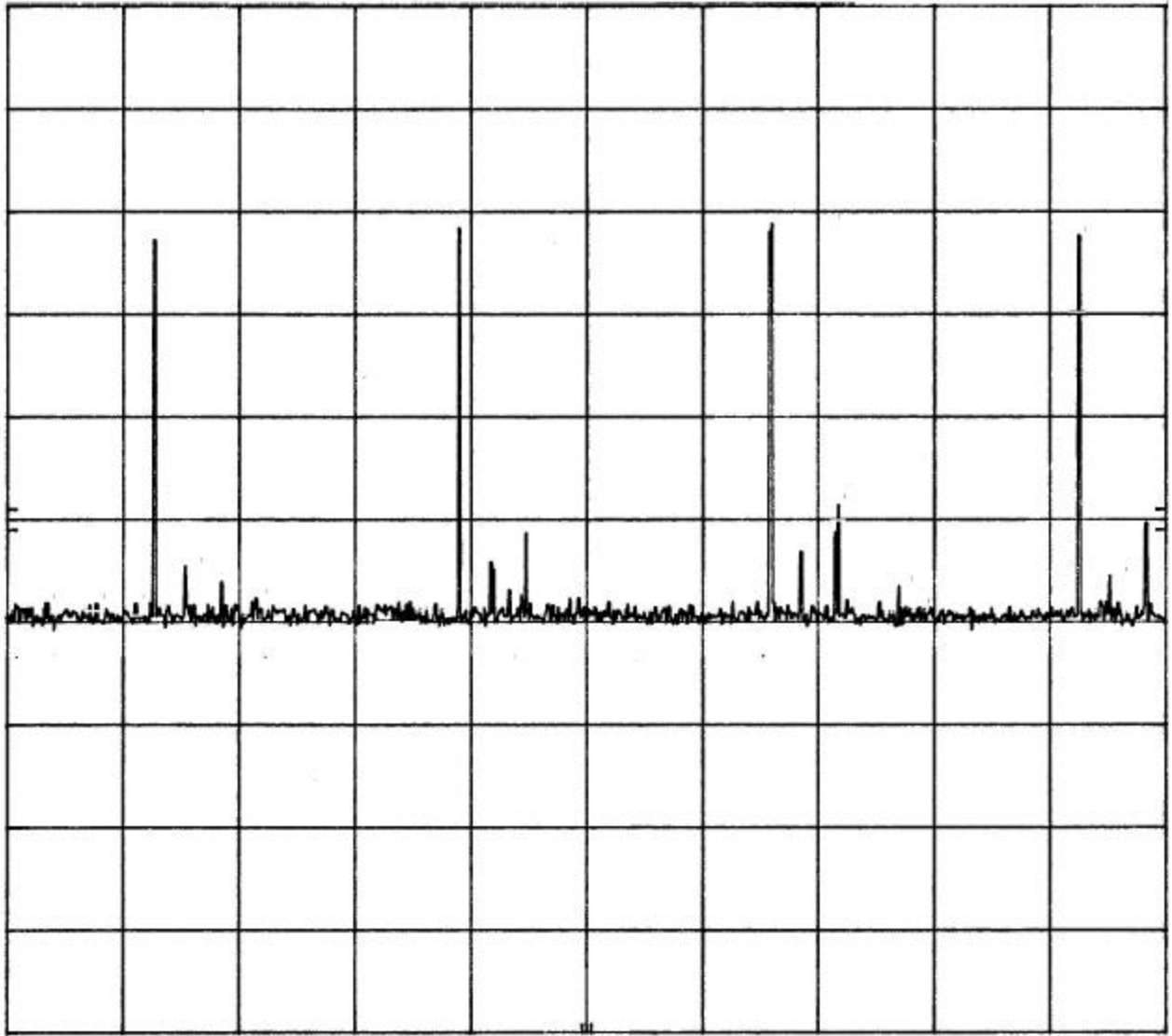


R-8338 SYMBOL CRIC OCCUPANCY TIME 1/5/00 TS
 REF 90.0 dBμV ATTEN 0 dB

hp
 10 dB/
 OFFSET
 10.0
 dB



CENTER 2.440 000 000 GHz SPAN 0 Hz
 RES BW 100 kHz VBW 3 MHz SWP 30.0 sec

Customer: Symbol Technologies
 Test Sample: 2.4 GHz Frequency Hopping Spread Spectrum PCMCIA module
 Model No.: CST30XX
 Test Method: Occupancy Time
 Notes: Plot of 4 transmissions in 30 seconds (worst case)
 Occupancy Time = 4 (10.2ms + 1ms = 11.2 ms) = 44.8 msec
 Date: January 5, 2000
 Tech: T. Schneider
 Sheet: 1 of 3



Retif Testing Laboratories

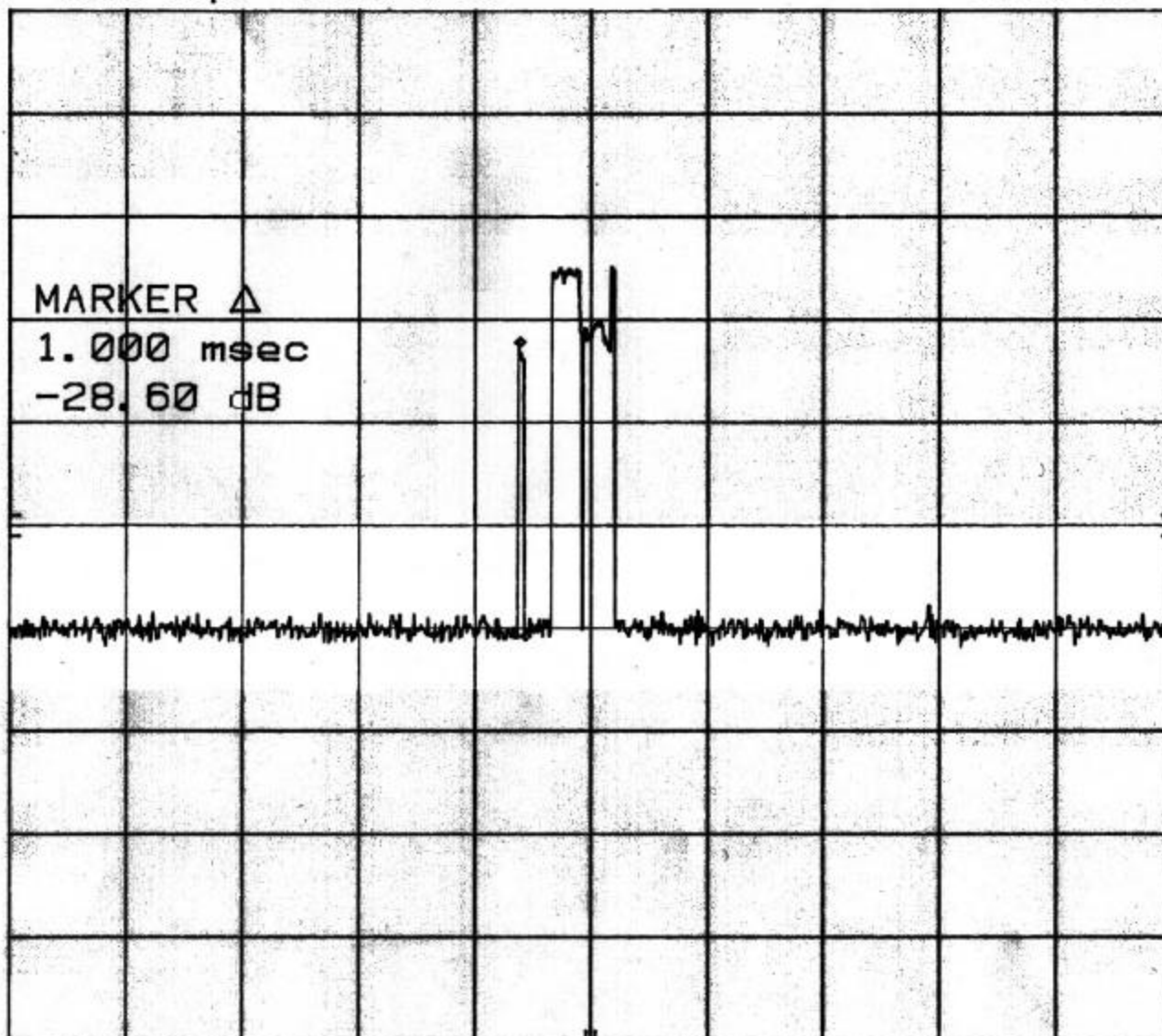
Report No. R-8338-1

R-8338 SYMBOL CRIC OCCUPANCY TIME 1/5/00 TSKR Δ 1.000 msec
REF 90.0 dBμV ATTEN 0 dB -28.60 dB

hp
10 dB/

OFFSET
10.0
dB

MARKER Δ
1.000 msec
-28.60 dB



CENTER 2.444 000 000 GHz
RES BW 100 kHz

VBW 3 MHz

SPAN 0 Hz
SWP 200 msec

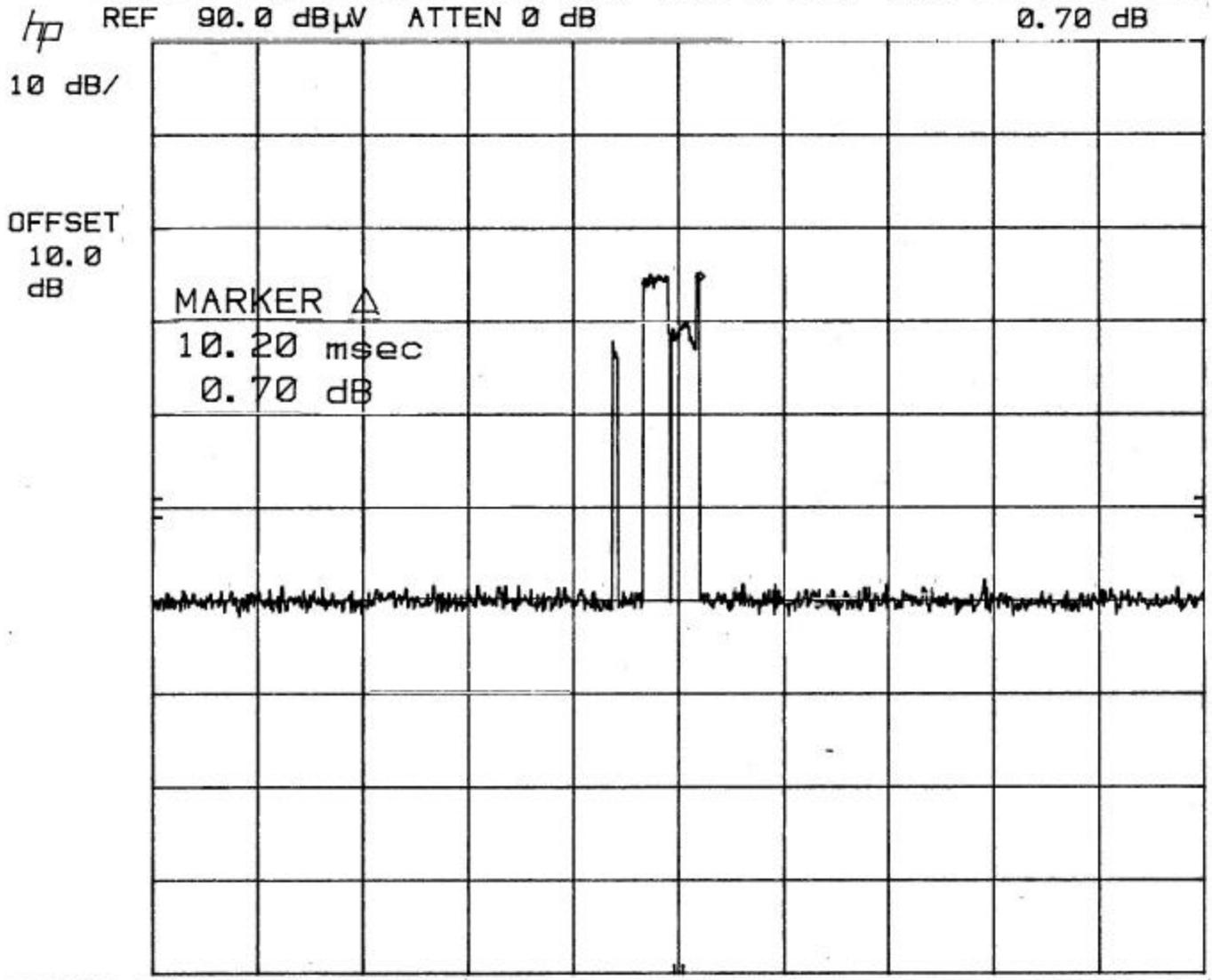
Customer: Symbol Technologies
Test Sample: 2.4 GHz Frequency Hopping Spread Spectrum POCNCA module
Model No.: CST300XX
Test Method: Fec cd: HPA-ST 304K088 R1
Notes: Occupancy Time
Duration of first part of single pulse = 1 ms
Occupancy Time = 4 (10.2ms + 1ms = 11.2 ms) = 44.8 msec
Date: January 5, 2000 Tech: T. Schneider Sheet 2 of 3



Retif Testing Laboratories

Report No. R-8338-1

R-8338 SYMBOL CRIC OCCUPANCY TIME 1/5/00 TSKR Δ 10.20 msec
 REF 90.0 dBμV ATTN 0 dB 0.70 dB



Customer: Symbol Technologies
 Test Sample: 2.4 GHz Frequency Hopping Spread Spectrum PCMCIA module
 Model No.: QMS CST3000
 Test Method: Ret 75: HPN-STAYKOBARI
 Notes: Occupancy Time
 Duration of second part of single pulse = 10.2 ms
 Occupancy Time = 4 (10.2ms * 1ms = 11.2 ms) = 44.8 msec
 Date: January 5, 2000
 Tech: T. Schneider
 Sheet: 3 of 3



Retlif Testing Laboratories

Report No. R-8338- /