

File : c:/idx3/SYSTEM/SARMEAS3/data/Normal/02011630_ZOOM.VLT
Start : 16-Jan-102 06:58:43 pm End : 16-Jan-102 07:13:05 pm

Radio Type : Validation
Model Number :
Serial Number : C
Frequency : 1900 MHz
Peak Trans. Pwr : 0.250 W
Start Trans. Pwr : 0.250 W
Antenna Type : Dipole
Antenna Posn. : Internal
Phantom Type : Flat
Phantom Posn. : E Field
Scan Type : ZOOM/SAR
Probe Name : PCTEST
Field Type : E Field
Orientation : 0 Degrees

Mixture Type = Muscle
Mixture Dielectric Constant = 54.200
Mixture Conductivity = 1.450

Comment :
1900 MHz Dipole Validation
SN: C

Robot : PCTEST

Probe Offset = 0.20 cm
Sensor Factor = 0.0108
Conversion Factor = 0.496

PCTEST Amplifier Channel Settings : 0.309 0.361 0.421

Max Location : X = 1.500, Y = -1.750, Z = 0.000 (cm) Value = 197.854

Measured Values (volts) =
2.064E-001 1.318E-001 8.987E-002 6.346E-002 4.708E-002 3.322E-002
2.407E-002 1.680E-002 1.200E-002 8.758E-003 6.158E-003 4.441E-003
3.363E-003 2.430E-003 1.916E-003 1.508E-003 1.117E-003 1.130E-003
1.024E-003 1.204E-003 1.008E-003

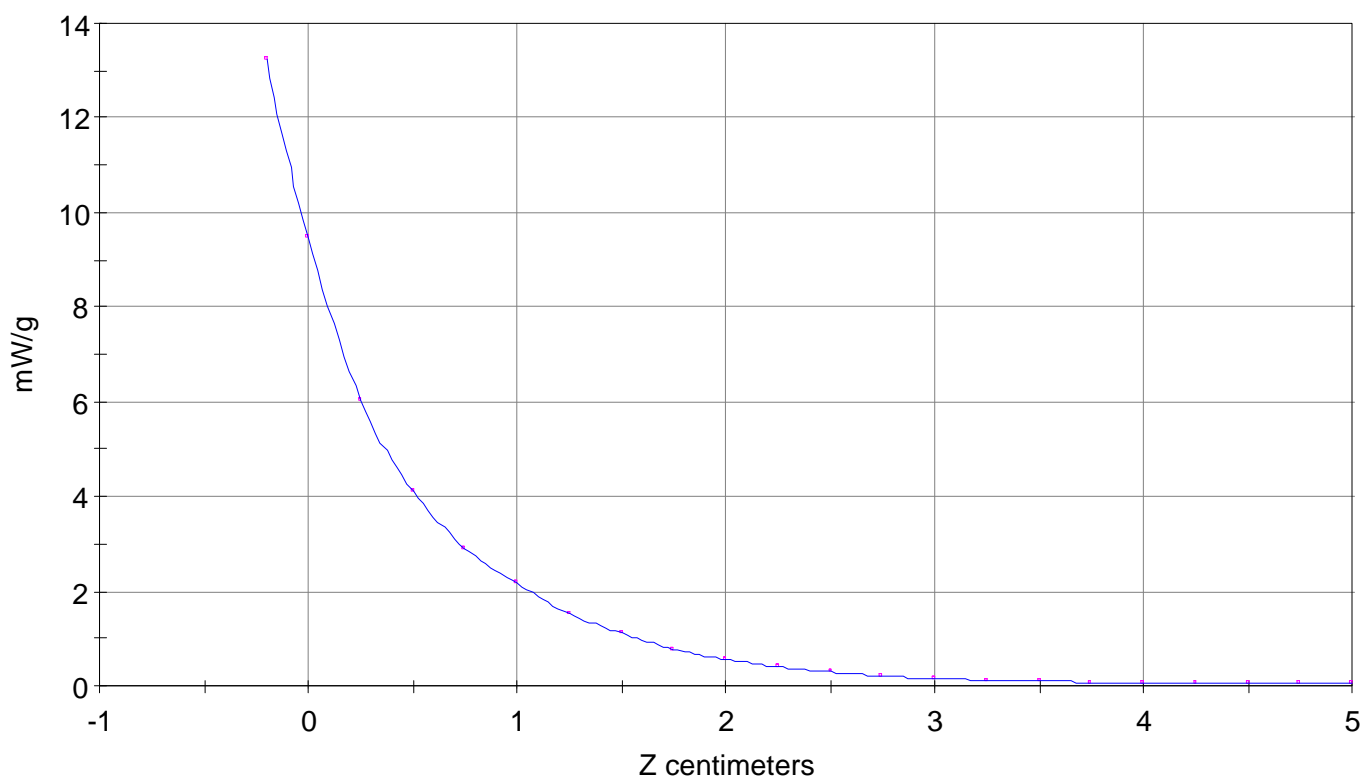
Calc. Voltage @ Surface (Vs) = 0.2880

Voltage @ 1.00 cm (Vt) = 0.0602

Ave. Voltage (Vs+Vt)/2 = 0.1741

Ave. SAR over 1 g (mW/g) = 7.9948

SAR Scan
File : 02011630_ZOOM
Start : 16-Jan-102 06:58:43 pm End : 16-Jan-102 07:13:05 pm
Validation//C;1900MHz;W;Dipole/Internal;
Flat/E Field;ZOOM/SAR;PCTEST/E Field/0 DegreesMuscle/54.200/1.450

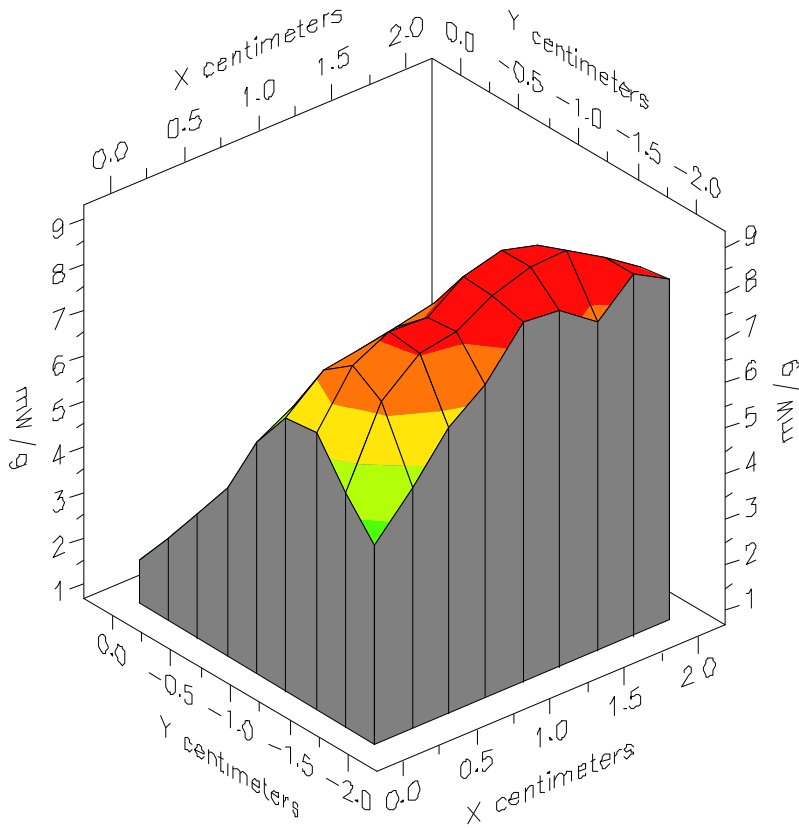


File : 02011630_ZOOM

Start : 16-Jan-102 06:58:43 pm End : 16-Jan-102 07:13:05 pm

Validation//C;1900MHz;W;Dipole/Internal;

Flat/E Field;ZOOM/SAR;PCTEST/E Field/0 DegreesMuscle/54.200/1.450



File : 02011630_ZOOM

Start : 16-Jan-102 06:58:43 pm End : 16-Jan-102 07:13:05 pm

Validation//C;1900MHz;W;Dipole/Internal;

Flat/E Field;ZOOM/SAR;PCTEST/E Field/0 DegreesMuscle/54.200/1.450

