

File : c:/idx3/SYSTEM/SARMEAS3/data/Normal/01082029_ZOOM.VLT
Start : 20-Aug-101 03:04:50 pm End : 20-Aug-101 03:12:47 pm

Radio Type : SYMBOL
Model Number : CRS1-10000-00
Serial Number : 1
Frequency : 2402 MHz
Peak Trans. Pwr : 0.001 W
Start Trans. Pwr : 0.001 W
Antenna Type : Helical
Antenna Posn. : Internal
Phantom Type : Body
Phantom Posn. : Abdomen
Scan Type : ZOOM/SAR
Probe Name : PCTEST
Field Type : E Field
Orientation : 0 Degrees

Mixture Type = Muscle
Mixture Dielectric Constant = 52.700
Mixture Conductivity = 1.950

Comment :
SYMBOL BLUETOOTH RING-SCANNER
CH 01 Conducted 1.0 mW
SYMBOL BLUETOOTH RING-SCANNER

Robot : PCTEST

Probe Offset = 0.25 cm
Sensor Factor = 0.0108
Conversion Factor = 0.983

PCTEST Amplifier Channel Settings : 0.172 0.187 0.220

Max Location : X = -0.250, Y = 0.750, Z = 0.000 (cm) Value = 0.303

Measured Values (volts) =
2.975E-004 2.059E-004 1.953E-004 1.616E-004 1.367E-004 9.517E-005
1.561E-004 9.312E-005 7.388E-005 6.359E-005 7.772E-005 1.020E-004
1.105E-004 6.620E-005 9.353E-005 8.261E-005 9.875E-005 9.428E-005
6.654E-005 8.018E-005 9.226E-005

Calc. Voltage @ Surface (Vs) = 0.0004

Voltage @ 1.00 cm (Vt) = 0.0002

Ave. Voltage (Vs+Vt)/2 = 0.0003

Ave. SAR over 1 g (mW/g) = 0.0243

File : c:/idx3/SYSTEM/SARMEAS3/data/Normal/01082027_ZOOM.VLT
Start : 20-Aug-101 02:40:15 pm End : 20-Aug-101 02:48:19 pm

Radio Type : SYMBOL
Model Number : CRS1-10000-00
Serial Number : 1
Frequency : 2442 MHz
Peak Trans. Pwr : 0.001 W
Start Trans. Pwr : 0.001 W
Antenna Type : Helical
Antenna Posn. : Internal
Phantom Type : Body
Phantom Posn. : Abdomen
Scan Type : ZOOM/SAR
Probe Name : PCTEST
Field Type : E Field
Orientation : 0 Degrees

Mixture Type = Muscle
Mixture Dielectric Constant = 52.700
Mixture Conductivity = 1.950

Comment :
SYMBOL BLUETOOTH RING-SCANNER
CH 41 Conducted 1.0 mW
SYMBOL BLUETOOTH RING-SCANNER

Robot : PCTEST

Probe Offset = 0.25 cm
Sensor Factor = 0.0108
Conversion Factor = 0.983

PCTEST Amplifier Channel Settings : 0.172 0.187 0.220

Max Location : X = -0.250, Y = 0.750, Z = 0.000 (cm) Value = 0.318

Measured Values (volts) =
3.197E-004 2.116E-004 1.508E-004 1.423E-004 1.062E-004 1.222E-004
8.821E-005 8.598E-005 9.465E-005 1.069E-004 1.066E-004 1.142E-004
8.528E-005 8.305E-005 7.842E-005 1.264E-004 1.040E-004 9.901E-005
5.707E-005 1.077E-004 9.387E-005

Calc. Voltage @ Surface (Vs) = 0.0005

Voltage @ 1.00 cm (Vt) = 0.0001

Ave. Voltage (Vs+Vt)/2 = 0.0003

Ave. SAR over 1 g (mW/g) = 0.0277

File : c:/idx3/SYSTEM/SARMEAS3/data/Normal/01082028_ZOOM.VLT
Start : 20-Aug-101 02:50:32 pm End : 20-Aug-101 03:02:07 pm

Radio Type : SYMBOL
Model Number : CRS1-10000-00
Serial Number : 1
Frequency : 2482 MHz
Peak Trans. Pwr : 0.001 W
Start Trans. Pwr : 0.001 W
Antenna Type : Helical
Antenna Posn. : Internal
Phantom Type : Body
Phantom Posn. : Abdomen
Scan Type : ZOOM/SAR
Probe Name : PCTEST
Field Type : E Field
Orientation : 0 Degrees

Mixture Type = Muscle
Mixture Dielectric Constant = 52.700
Mixture Conductivity = 1.950

Comment :
SYMBOL BLUETOOTH RING-SCANNER
CH 81 Conducted 1.0 mW
SYMBOL BLUETOOTH RING-SCANNER

Robot : PCTEST

Probe Offset = 0.25 cm
Sensor Factor = 0.0108
Conversion Factor = 0.983

PCTEST Amplifier Channel Settings : 0.172 0.187 0.220

Max Location : X = -0.250, Y = 0.750, Z = 0.000 (cm) Value = 0.304

Measured Values (volts) =
3.259E-004 1.858E-004 1.498E-004 1.367E-004 7.668E-005 8.154E-005
7.289E-005 9.088E-005 9.145E-005 6.531E-005 8.598E-005 6.891E-005
8.748E-005 1.086E-004 1.245E-004 7.291E-005 7.205E-005 7.100E-005
6.579E-005 1.199E-004 7.317E-005

Calc. Voltage @ Surface (Vs) = 0.0005

Voltage @ 1.00 cm (Vt) = 0.0001

Ave. Voltage (Vs+Vt)/2 = 0.0003

Ave. SAR over 1 g (mW/g) = 0.0284

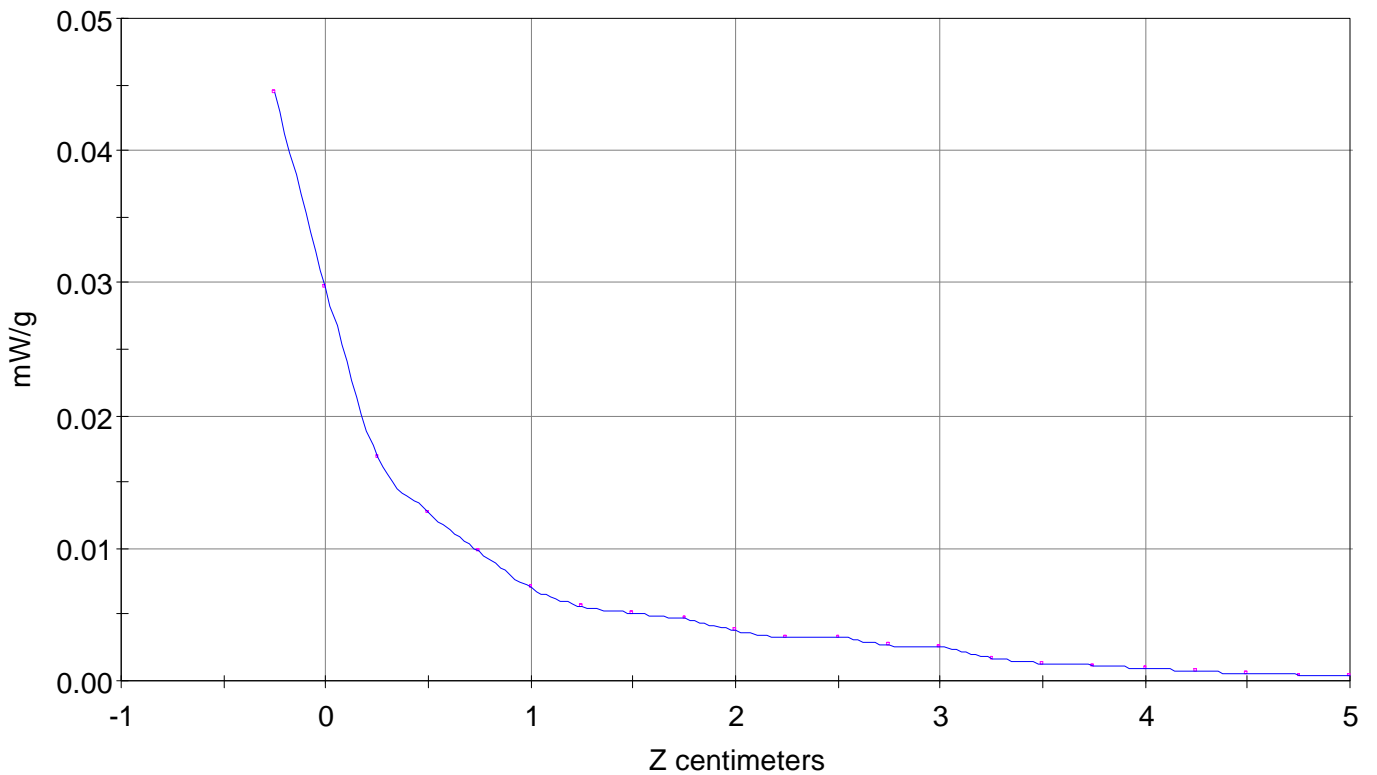
SAR Scan

File : 01082028_ZOOM

Start : 20-Aug-101 02:50:32 pm End : 20-Aug-101 03:02:07 pm

SYMBOL/CRS1-10000-00/1;2482MHz;W;Helical/Internal;

Body/Abdomen;ZOOM/SAR;PCTEST/E Field/0 DegreesMuscle/52.700/1.950

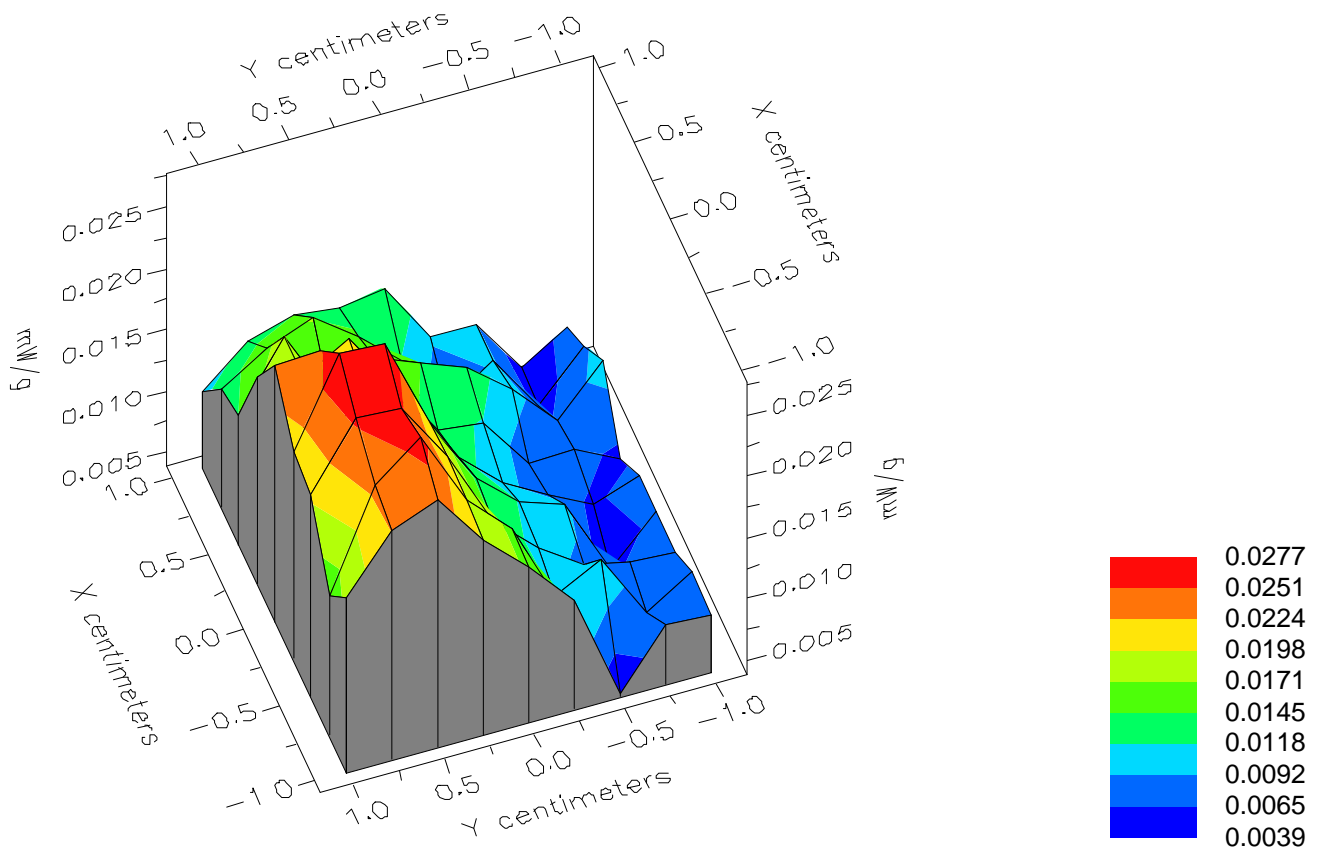


File : 01082028_ZOOM

Start : 20-Aug-101 02:50:32 pm End : 20-Aug-101 03:02:07 pm

SYMBOL/CRS1-10000-00/1;2482MHz;W;Helical/Internal;

Body/Abdomen;ZOOM/SAR;PCTEST/E Field/0 DegreesMuscle/52.700/1.950

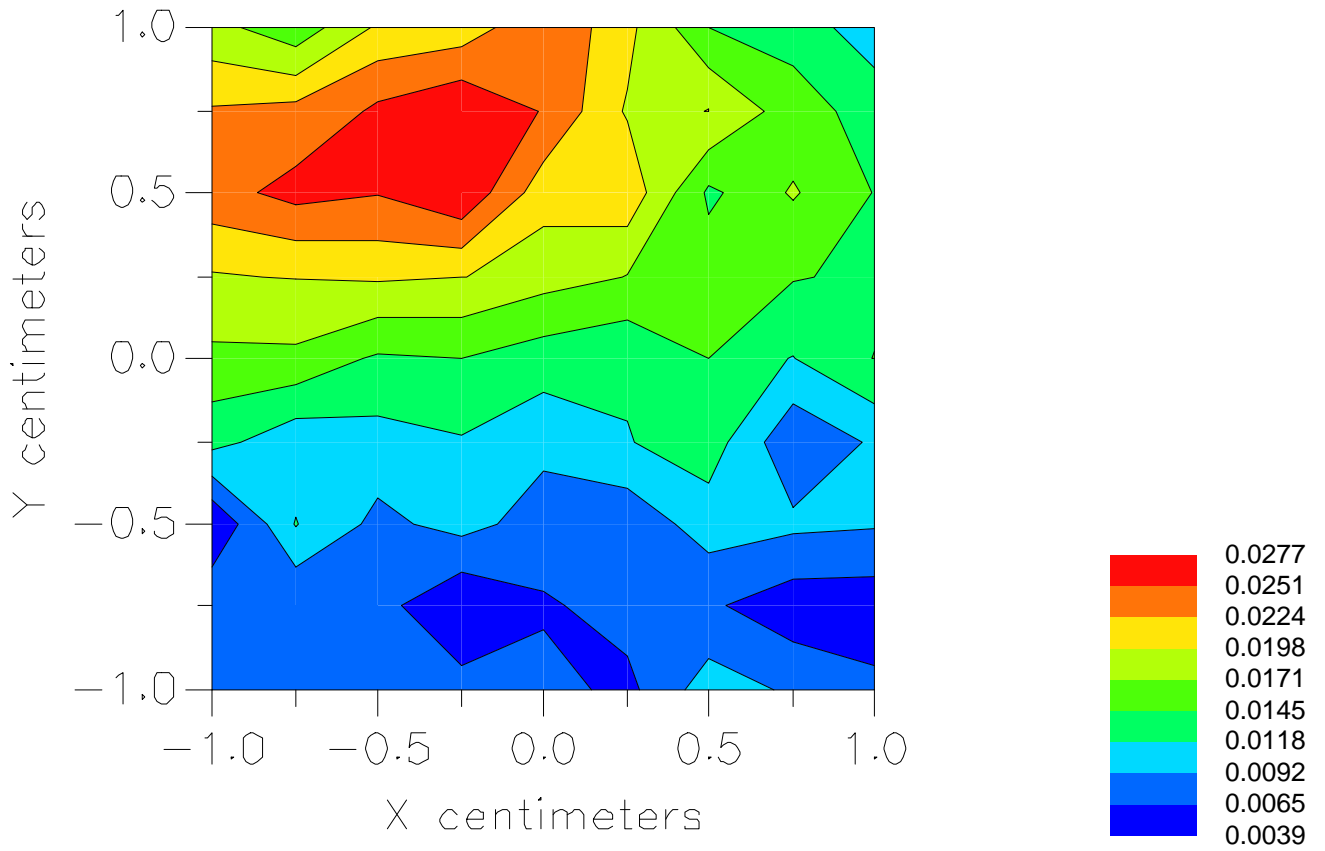


File : 01082028_ZOOM

Start : 20-Aug-101 02:50:32 pm End : 20-Aug-101 03:02:07 pm

SYMBOL/CRS1-10000-00/1;2482MHz;W;Helical/Internal;

Body/Abdomen;ZOOM/SAR;PCTEST/E Field/0 DegreesMuscle/52.700/1.950



File : c:/idx3/SYSTEM/SARMEAS3/data/Normal/01082030_SAR.VLT
Start : 20-Aug-101 03:24:49 pm End : 20-Aug-101 03:31:03 pm

Radio Type : SYMBOL
Model Number : CRS1-10000-00
Serial Number : 1
Frequency : 2482 MHz
Peak Trans. Pwr : 0.001 W
Start Trans. Pwr : 0.001 W
Antenna Type : Helical
Antenna Posn. : Internal
Phantom Type : Body
Phantom Posn. : Abdomen
Scan Type : ZOOM/SAR 10g
Probe Name : PCTEST
Field Type : E Field
Orientation : 0 Degrees

Mixture Type = Muscle
Mixture Dielectric Constant = 52.700
Mixture Conductivity = 1.950

Comment :
SYMBOL BLUETOOTH RING-SCANNER
CH 81 Conducted 1.0 mW
SYMBOL BLUETOOTH RING-SCANNER - HAND SAR

Robot : PCTEST

Probe Offset = 0.25 cm
Sensor Factor = 0.0108
Conversion Factor = 0.983

PCTEST Amplifier Channel Settings : 0.172 0.187 0.220

Max Location : X = -0.250, Y = 0.750, Z = 0.000 (cm) Value = 0.323

Ave. SAR over 10 g (mW/g) = 0.0118

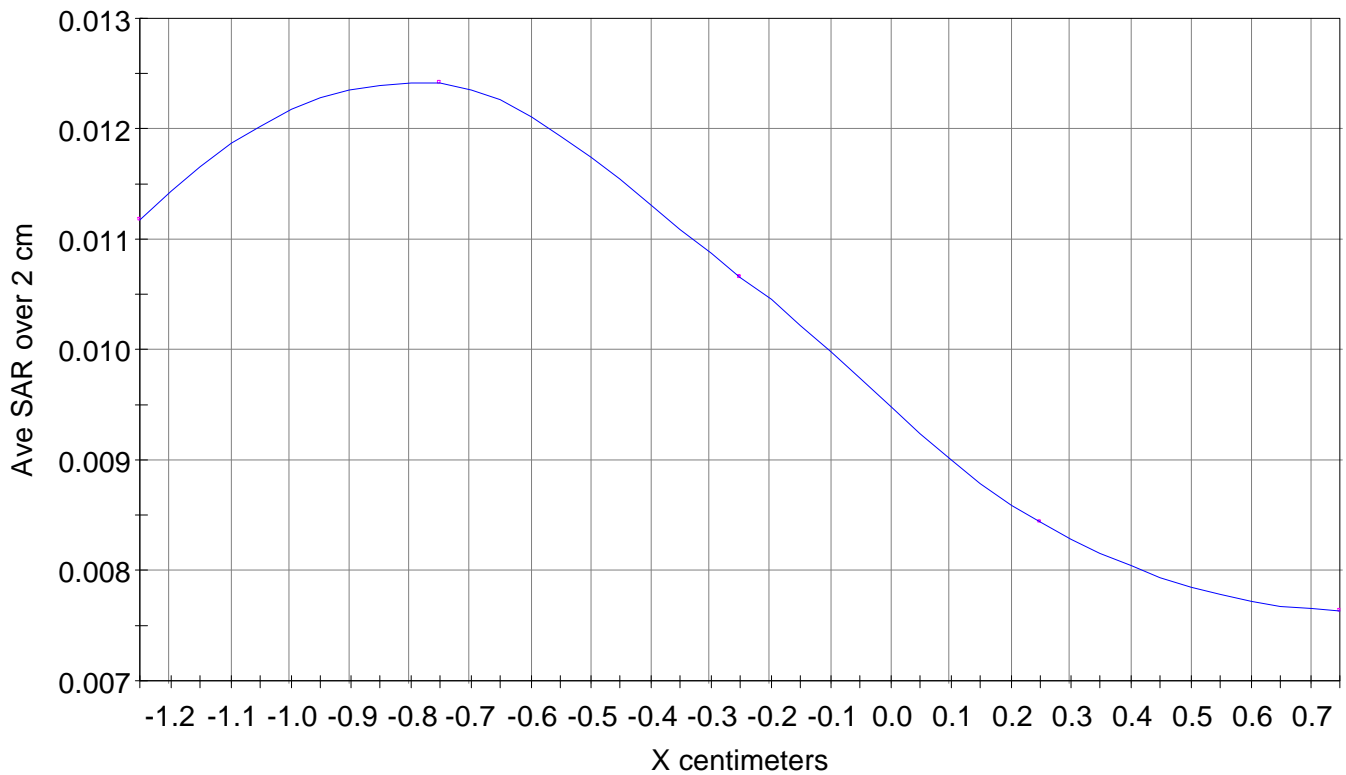
X-Z Plane Slice Y=0.750

File : 01082030_SAR

Start : 20-Aug-101 03:24:49 pm End : 20-Aug-101 03:31:03 pm

SYMBOL/CRS1-10000-00/1;2482MHz;W;Helical/Internal;

Body/Abdomen;ZOOM/SAR 10g;PCTEST/E Field/0 DegreesMuscle/52.700/1.950

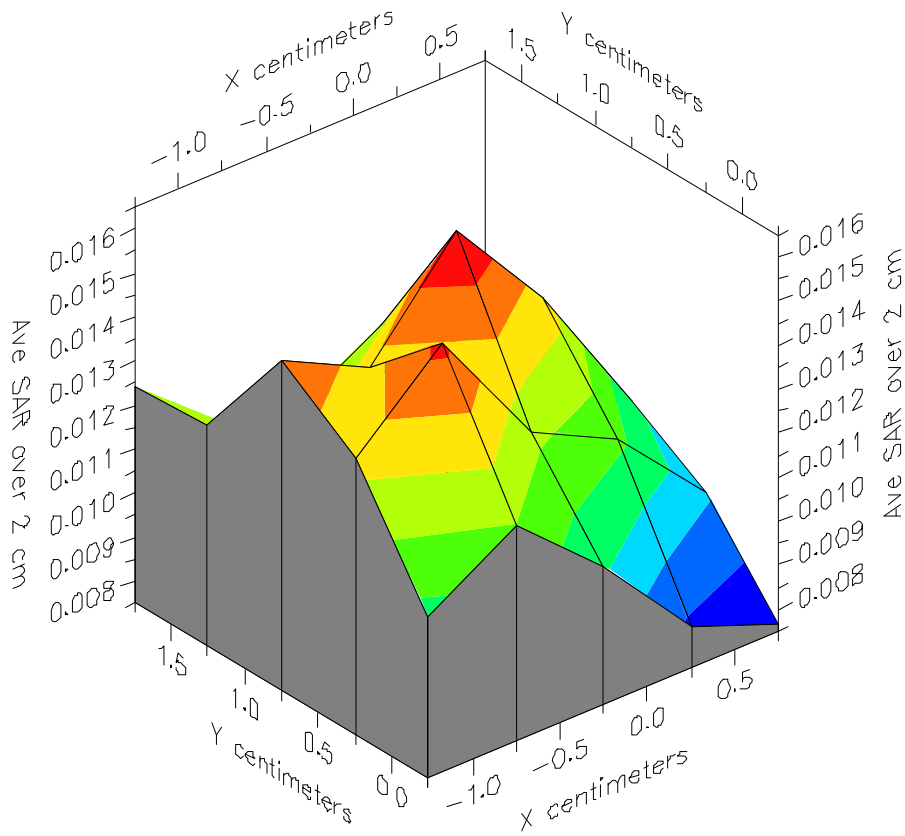


File : 01082030_SAR

Start : 20-Aug-101 03:24:49 pm End : 20-Aug-101 03:31:03 pm

SYMBOL/CRS1-10000-00/1;2482MHz;W;Helical/Internal;

Body/Abdomen;ZOOM/SAR 10g;PCTEST/E Field/0 DegreesMuscle/52.700/1.950



File : 01082030_SAR

Start : 20-Aug-101 03:24:49 pm End : 20-Aug-101 03:31:03 pm

SYMBOL/CRS1-10000-00/1;2482MHz;W;Helical/Internal;

Body/Abdomen;ZOOM/SAR 10g;PCTEST/E Field/0 DegreesMuscle/52.700/1.950

