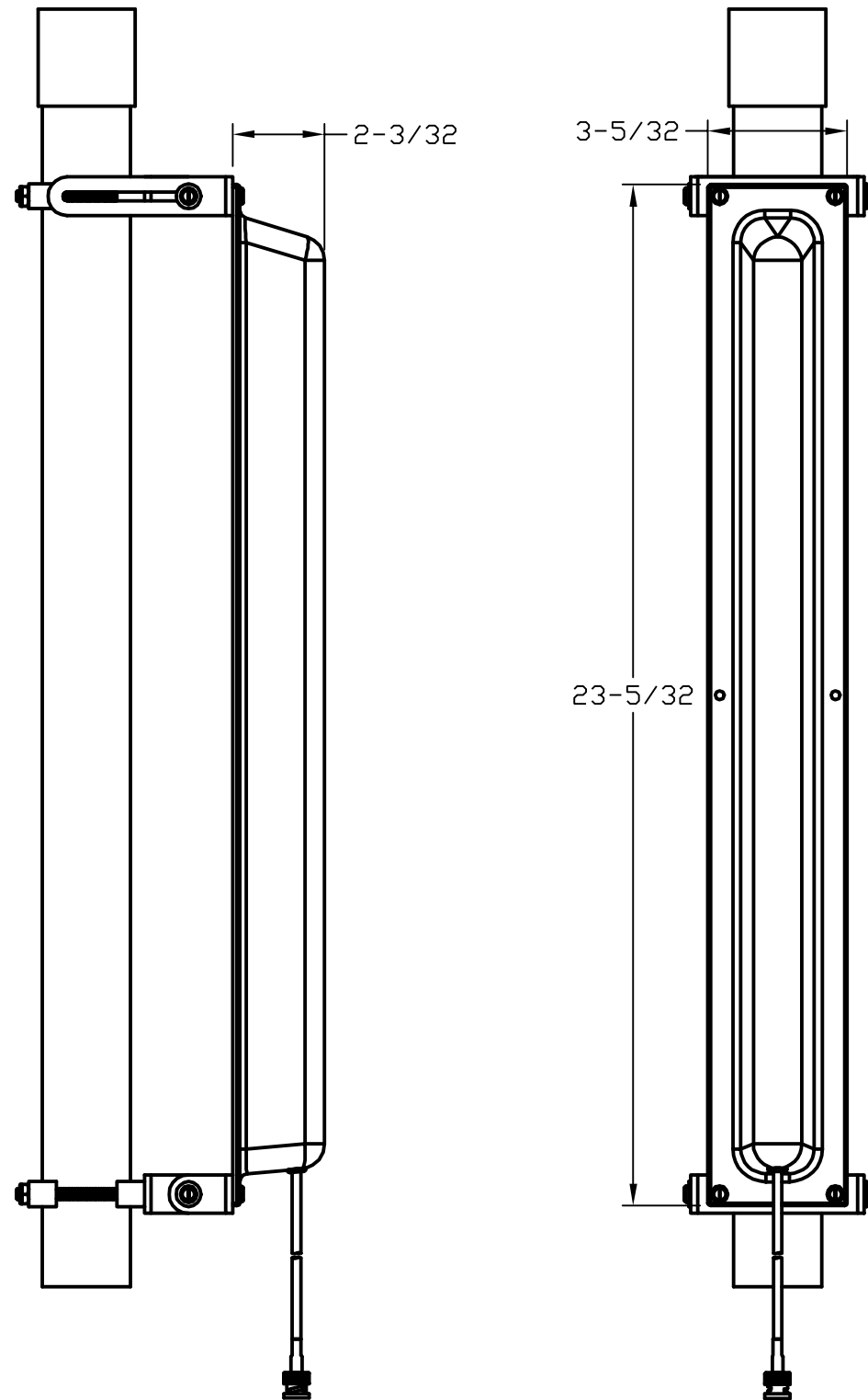


REVISION			
LTR	DESCRIPTION	DATE	INITIAL
AA	ORIGINAL	10-15-02	SWJ
AB	ADDED MOUNTING HARDWARE & SYMBOL	12-24-02	AMA
PART NUMBER (ECR#1092)			

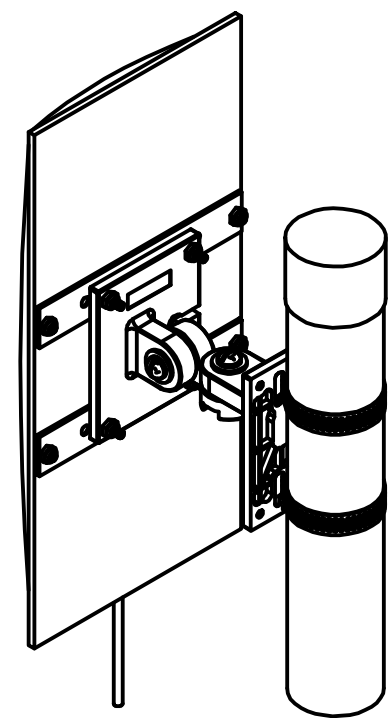
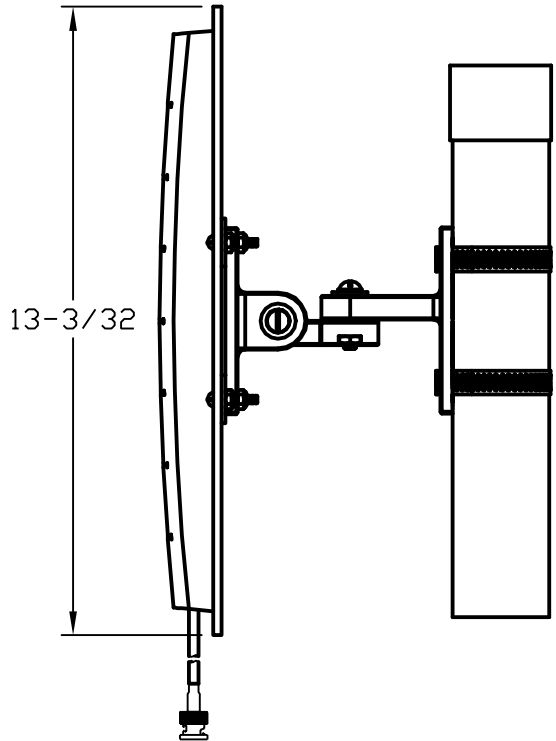
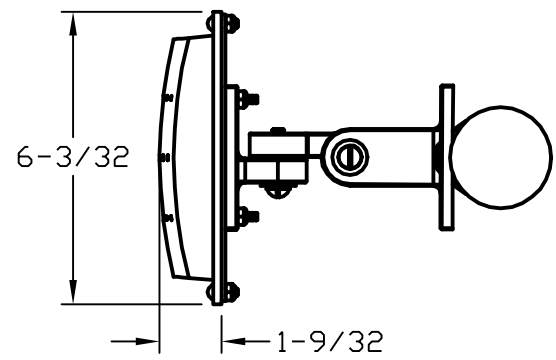


Parameter	Performance
Model Number	SR24120DS96RBN
Symbol Part Number	ML-2499-11PNA2-01
Frequency	2400-2500 MHz
Gain	11 dBi
Polarization	Linear, Vertical
VSWR	1.7:1 Typ.
Elevation Plane 3 dB Beamwidth	13°
Azimuth Plane 3 dB Beamwidth	120°
Front to Back Ratio	18 dB
Pigtail	96"
RF Connector	Reverse BNC
Power	50 W
Weight	1.5 lb

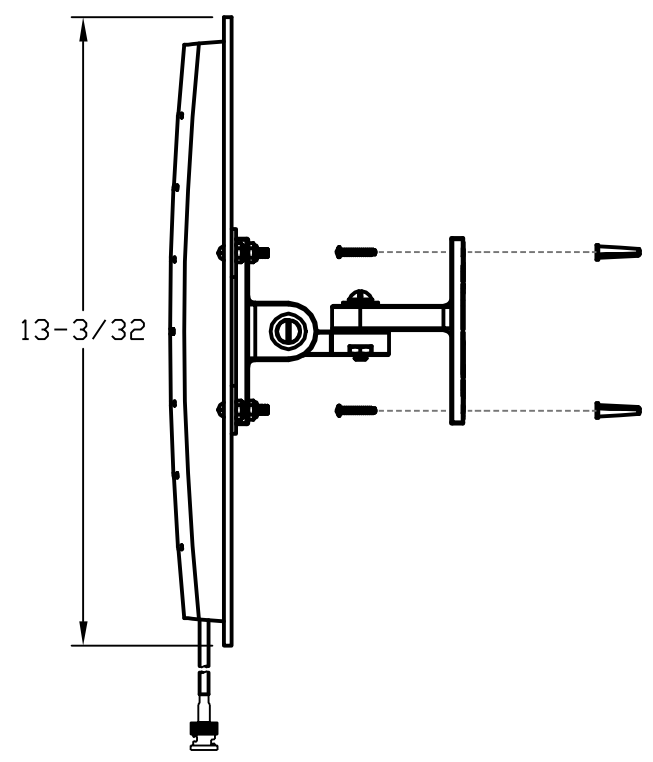
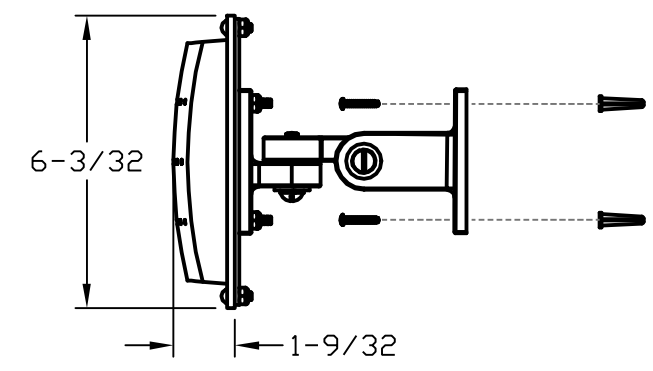
#### MOUNTING HARDWARE

QTY	Description	
8	#10-24 X 1/2" SS MS	
4	#10 SS FLAT WASHER	
8	#10-24 SS/NYLON HEX NUT	
4	1/4-20 SS/NYLON HEX NUT	
4	1/4-20 X 3-1/2" SS HH	
1	TILT MOUNT BRACKET #3	
2	TILT MOUNT BRACKET #1	
1	TILT MOUNT BRACKET #2	
4	V-BLOCK	

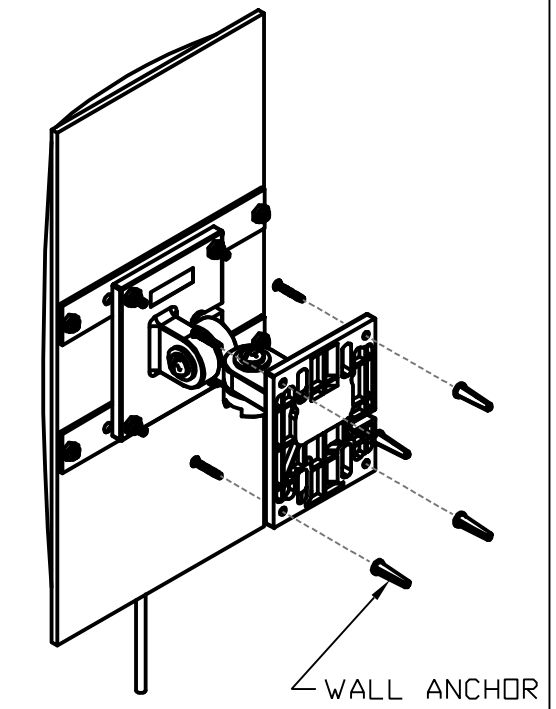
MATERIAL:	DRAWN S JOHNSON	DATE 10-15-02	<b>CUSHCRAFT</b> 48 PERIMETER ROAD MANCHESTER NH. 03108
	ENGINEER B MATTIS	DATE 10-18-02	
DO NOT SCALE DRAWING	ENGINEERING MGR A ALEVY	DATE 10-18-02	TITLE: <b>SR24120DS96RBN            MOUNTING &amp; OUTLINE</b>
UNLESS OTHERWISE SPECIFIED TOLERANCES ARE: ANGLES ± 0.5° FRACTIONS ± 1/64" .XX ± 0.010" .XXX ± 0.005"	FINISH:		DRAWING NO. <b>SR24120DS96RBNMO</b>
			REV <b>AB</b>
	SCALE 1:4	SIZE B	SHEET 1 OF 1



MAST MOUNT CONFIGURATION



REVISION			
LTR	DESCRIPTION	DATE	INITIAL
AA	ORIGINAL	10-14-02	SWJ
AB	ADDED MOUNTING HARDWARE & SYMBOL	12-23-02	AMA
PART NUMBER (ECR#1092)			



WALL MOUNT CONFIGURATION

WALL ANCHOR

Parameter	Performance
Model No.	S24012PS96RBN
Symbol Part Number	ML-2499-12PNA2-01
Frequency	2400-2500 MHz
Gain	12 dBi
Polarization	Vertical Linear
VSWR	1.7:1 Typ.
Azimuth Plane 3 dB Beamwidth	65°
Elevation Plane 3 dB Beamwidth	25°
Front to Back Ratio	25 dB
Cable Length	96"
RF Connector	Reverse BNC
Power	50 Watts
Weight	1.6 lb

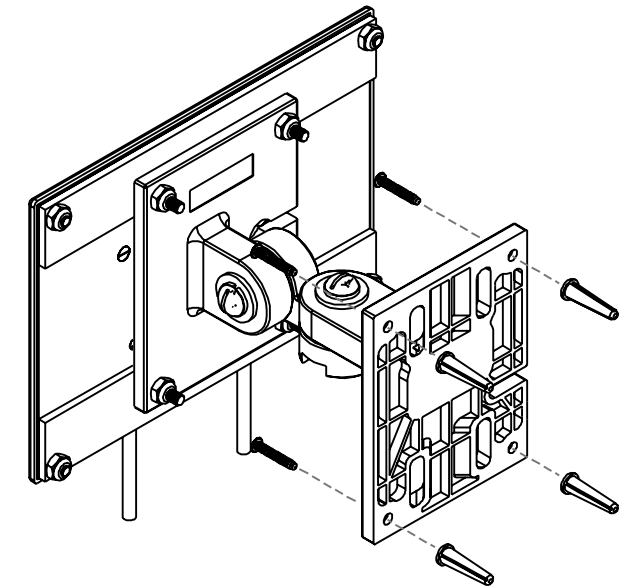
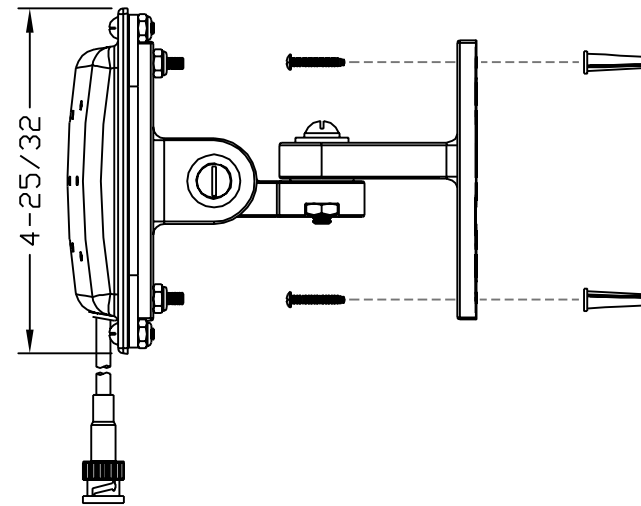
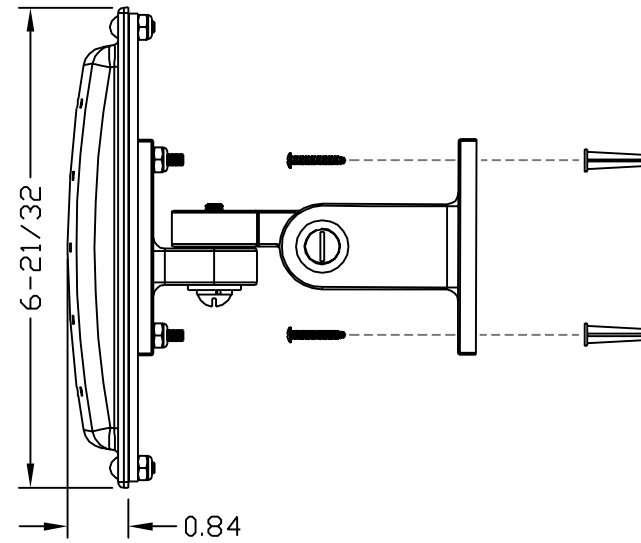
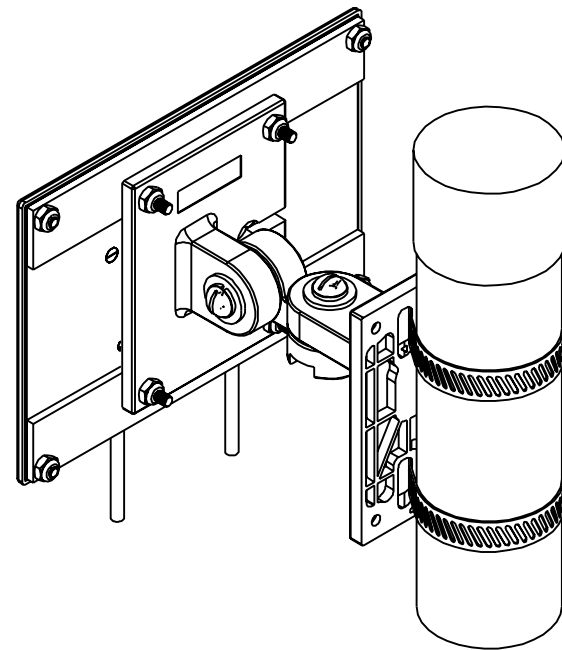
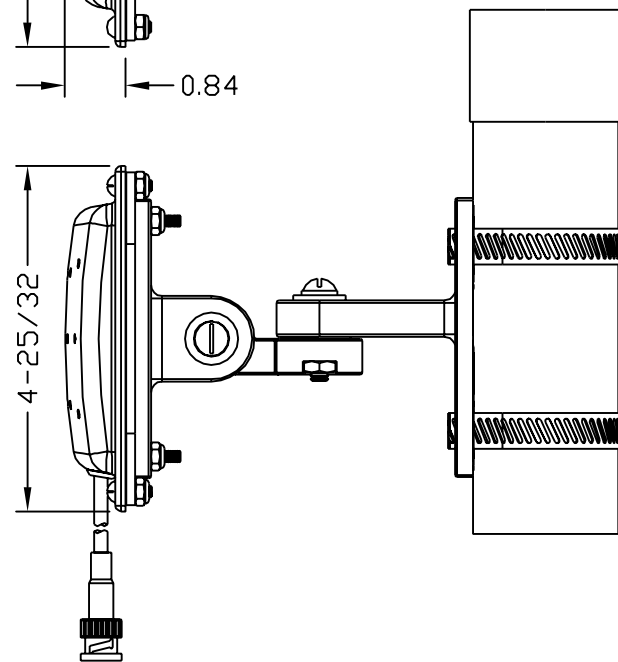
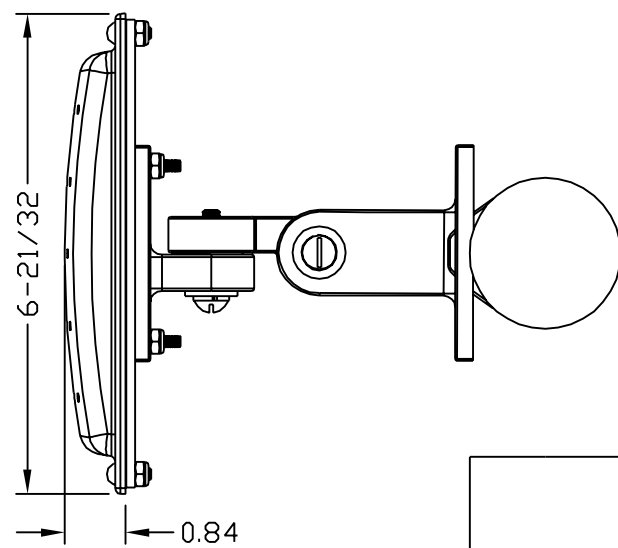
MOUNTING HARDWARE

QTY	Description	
2	1/4-20 X 1-1/4" SS MS	
2	1/4" SS FLAT WASHER	
2	1/4" SS SPLIT LOCK WASHER	
2	1/4-20 SS HEX NUT	
8	#8-32 SS/NYLON HEX NUT	
4	#8-32 X 5/8" SS FH MS	
4	#8 PLASTIC WALL ANCHOR	
4	8/18 X 3/4" SS MS	
1	ALL-PURPOSE MOUNT ARM	
1	ALL-PURPOSE WALL MOUNT	
1	ALL-PURPOSE ANT. MOUNT	
4	#8-32 X 1/2" SS MS	
2	MOUNTING STRAPS	
2	WORM CLAMPS	

MATERIAL:	DRAWN S JOHNSON	DATE 10-14-02	<p><b>CUSHCRAFT</b> 48 PERIMETER ROAD MANCHESTER NH. 03108</p> <p>TITLE: <b>S24012PS96RBN MOUNTING &amp; OUTLINE</b></p>
	ENGINEER B MATTIS	DATE 10-18-02	
DO NOT SCALE DRAWING	ENGINEERING MGR A ALEVY	DATE 10-18-02	DRAWING NO. S24012PS96RBNMO
UNLESS OTHERWISE SPECIFIED TOLERANCES ARE: ANGLES ± 0.5° FRACTIONS ± 1/64" .XX ± 0.010" .XXX ± 0.005"	FINISH:		REV AB
	SCALE 1:4	SIZE B	SHEET 1 OF 1

CONFIDENTIAL  
© 2001, Cushcraft Corporation. Information contained in this document is of a proprietary and/or legally privileged nature. It may not be reproduced without express written permission of Cushcraft Corporation, Manchester, NH.

REVISION			
LTR	DESCRIPTION	DATE	INITIAL
AA	ORIGINAL	10-14-02	SWJ
AB	ADDED MOUNTING HARDWARE & SYMBOL	12-24-02	AMA
PART NUMBER, ADDED ALLPMT (ECR#1092/1093)			
AC	S.T.I. P/N WAS ML-2499-PNAHD-01 (ECR#1134)	1-21-03	AMA



Parameter	Performance
Model Number	S2406DSPS48RBN
Symbol Part Number	ML-2499-7PNA2-01
Frequency	2400 - 2500 MHz
Gain	6.5 dBi
Polarization	Vertical Linear
VSWR	1.7:1 Max
Horizontal 3 dB Beamwidth	80 Degrees
Vertical 3 dB Beamwidth	55 Degrees
Front to Back Ratio	15 dB
Cable Length	48"
RF Connector	Reverse BNC (2X)
Power	10 Watts
Weight	9.6 oz
Radome Color	White

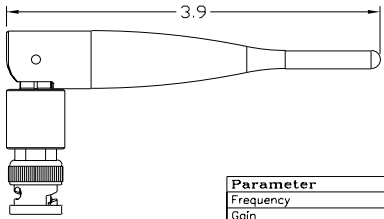
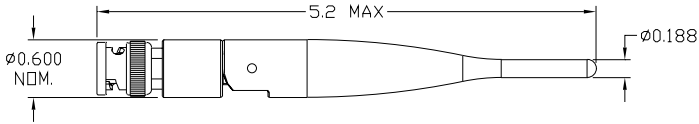
### MOUNTING HARDWARE

QTY	Description	Symbol
2	1/4-20 X 1-1/4" SS MS	
2	1/4" SS FLAT WASHER	
2	1/4" SS SPLIT LOCK WASHER	
2	1/4-20 SS HEX NUT	
8	#8-32 SS/NYLON HEX NUT	
4	#8-32 X 5/8" SS FH MS	
4	#8 PLASTIC WALL ANCHOR	
4	8/18 X 3/4" SS MS	
1	ALL-PURPOSE MOUNT ARM	
1	ALL-PURPOSE WALL MOUNT	
1	ALL-PURPOSE ANT. MOUNT	
4	#8-32 X 1/2" SS MS	
2	MOUNTING STRAPS	
2	WORM CLAMPS	

MATERIAL:	DRAWN S JOHNSON	DATE 10-14-02	<b>CUSHCRAFT</b> 48 PERIMETER ROAD MANCHESTER NH. 03108
	ENGINEER B MATTIS	DATE 10-18-02	
DO NOT SCALE DRAWING UNLESS OTHERWISE SPECIFIED TOLERANCES ARE: ANGLES ± 0.5° FRACTIONS ± 1/64" .XX ± 0.010" .XXX ± 0.005"	ENGINEERING MGR A ALEVY	DATE 10-18-02	TITLE: <b>S2406DSPS48RBN            MOUNTING &amp; OUTLINE</b>
	FINISH:		DRAWING NO. <b>S2406DSPS48RBNMO</b>
			REV <b>AC</b>
	SCALE NONE	SIZE C	SHEET <b>1 OF 1</b>

CONFIDENTIAL  
 © 2000, Cushcraft Corporation. Information contained in this document is of a proprietary and/or legally privileged nature. It may not be reproduced without express written permission of Cushcraft Corporation, Manchester, NH.

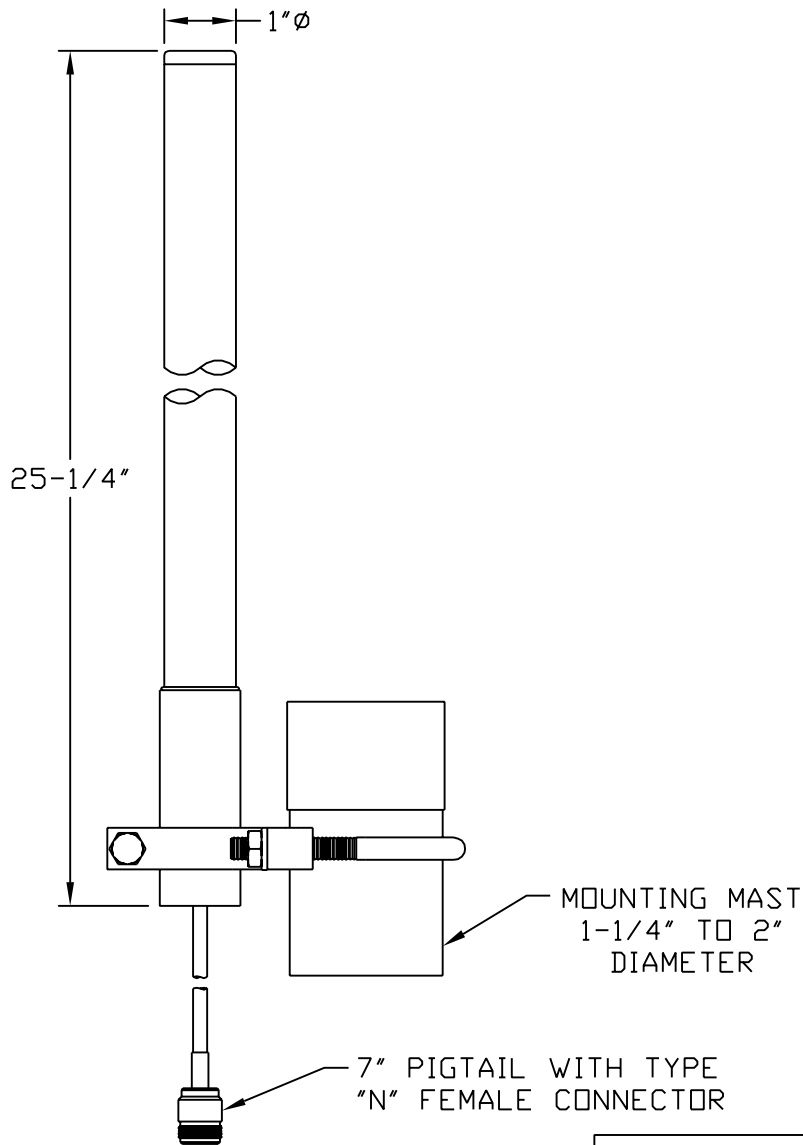
REVISION			
LTR	DESCRIPTION	DATE	INITIAL
A	ORIGINAL	8-21-01	SWJ



Parameter	Performance
Frequency	2400-2500 MHz
Gain	2 dBi Nom.
Polarization	Linear
VSWR	1.5:1
RF Connector	Reversed Polarized BNC
Power	2 Watts
Color	Black
Pivot Lock Position	0°, 90°
Material	Housing to be manufactured from injection molded plastic

MATERIAL:	DRAWN S JOHNSON	DATE 8-21-01	<b>CUSHCRAFT</b> 46 PERIMETER ROAD MANCHESTER NH 03108
	ENGINEER	DATE	
DO NOT SCALE DRAWING	ENGINEERING MGR	DATE	TITLE: <b>OMNI ANTENNA</b> 2 dBi, 2400-2500 MHz
UNLESS OTHERWISE SPECIFIED TOLERANCES ARE: ANGLES ± 0.5° FRACTIONS ± 1/64" .XX ± 0.010" .XXX ± 0.005"	FINISH:		DRAWING NO. E03727
			REV A
	SCALE 1:1	SIZE A	SHEET 1 OF 1

CONFIDENTIAL  
 © 2001, Cushcraft Corporation, information contained in this document is of a proprietary and/or legally privileged nature. It may not be reproduced without express written permission of Cushcraft Corporation, Manchester, NH.



REVISION			
LTR	DESCRIPTION	DATE	INITIAL
AA	ORIGINAL	10-14-02	SWJ
AB	ADDED MOUNTING HARDWARE & SYMBOL	12-23-02	AMA
PART NUMBER (ECR#1092)			

Parameter	Performance
Model Number	S2406BPS7NF
Symbol Part Number	ML-2499-BMMA1-01
Frequency	2400-2500 MHz
Gain	7 dBi
Polarization	Linear Vertical
VSWR	1.5:1
Elevation Plane 3 dB Beamwidth	12 Degrees
Pigtail	7" Cable
RF Connector	Type N Female
Power	50 Watts
Weight	0.5 Lb

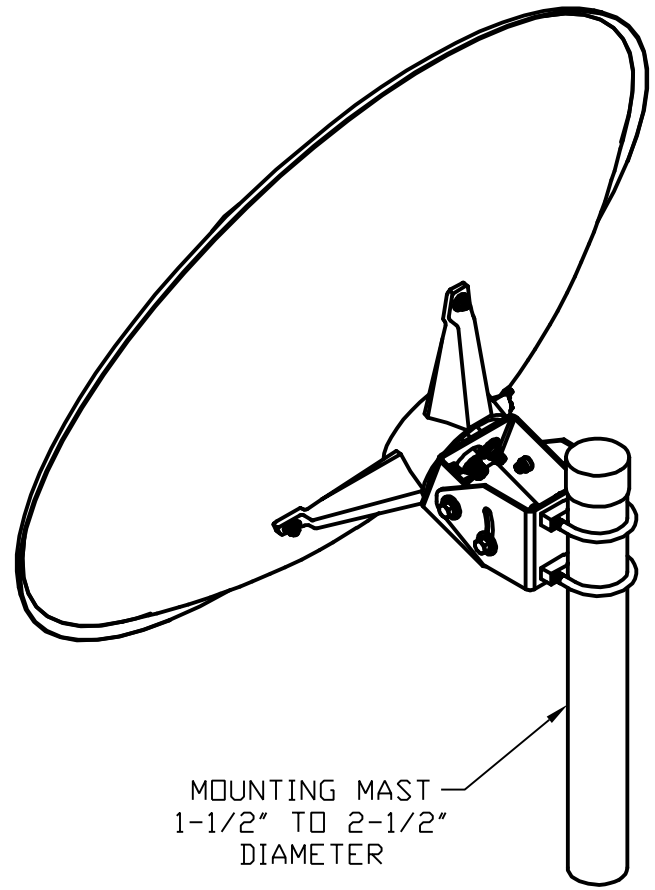
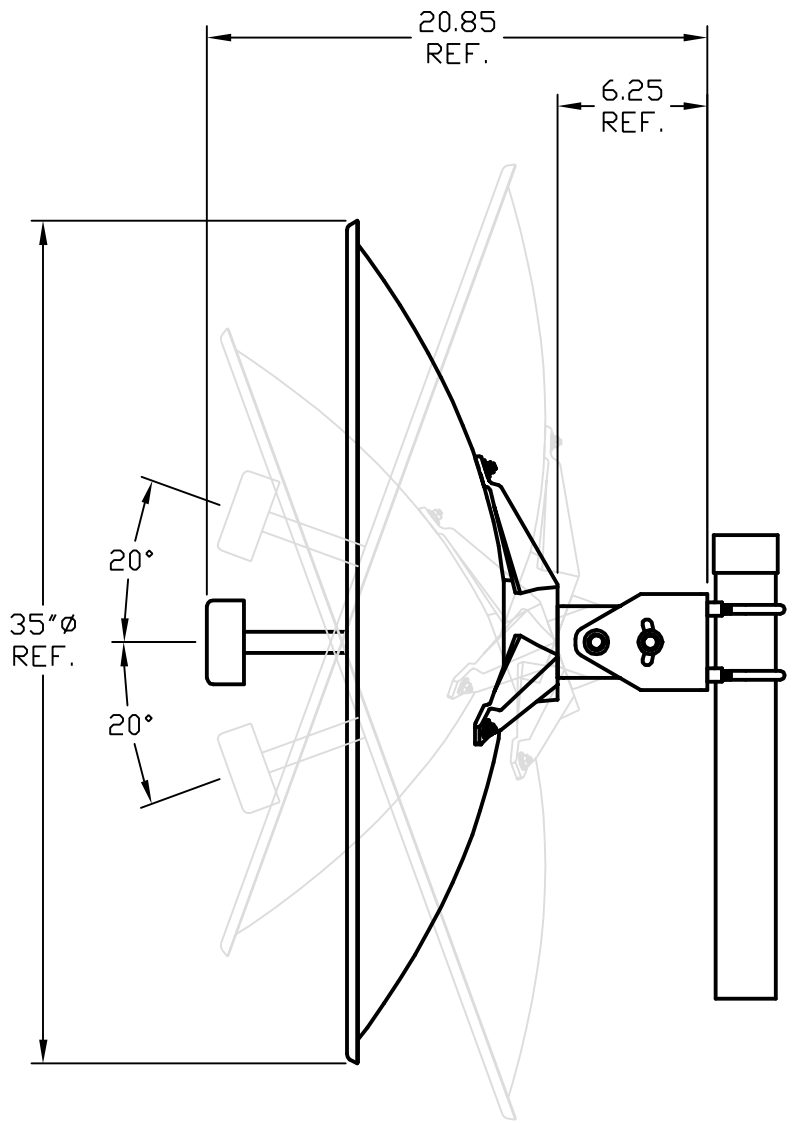
### MOUNTING HARDWARE

QTY	Description	
1	1/4 SS SPLIT LOCK WASHER	
1	1/4-20 SS HEX NUT	
1	1/4-20 X 3/4" SS HH	
2	5/16 SS SPLIT LOCK WASHER	
2	5/16-18 SS HEX NUT	
1	5/16-18 U-BOLT	
1	V-CLAMP	

MATERIAL:	DRAWN	DATE
	S JOHNSON	10-14-02
DO NOT SCALE DRAWING	ENGINEER	DATE
	B MATTIS	10-18-02
UNLESS OTHERWISE SPECIFIED TOLERANCES ARE:	ENGINEERING MGR	DATE
	A ALEVY	10-18-02
ANGLES	± 0.5°	
FRACTIONS	± 1/64"	
.XX	± 0.010"	
.XXX	± 0.005"	
FINISH:		

<b>CUSHCRAFT</b>		
48 PERIMETER ROAD MANCHESTER NH. 03108		
TITLE:		
<b>S2406BPS7NF</b>		
<b>MOUNTING &amp; OUTLINE</b>		
DRAWING NO.		REV
S2406BPS7NFM0		AB
SCALE	SIZE	SHEET
NONE	A	1 OF 1

REVISION			
LTR	DESCRIPTION	DATE	INITIAL
AA	ORIGINAL	10-14-02	SWJ
AB	ADDED MOUNTING HARDWARE & SYMBOL	12-23-02	AMA
PART NUMBER (ECR#1092)			



MOUNTING MAST  
1-1/2" TO 2-1/2"  
DIAMETER

**MOUNTING HARDWARE**

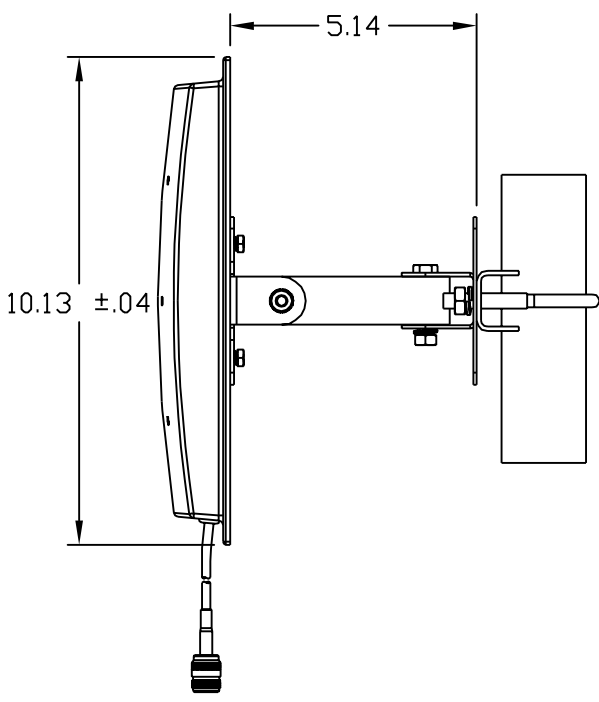
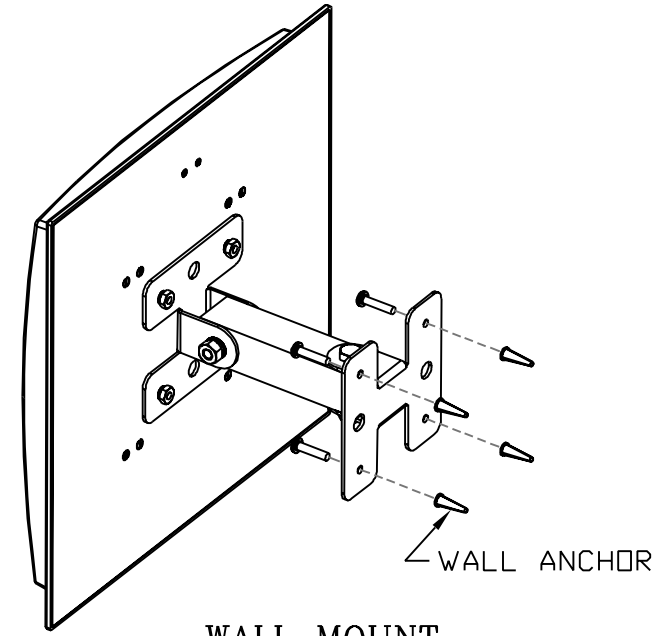
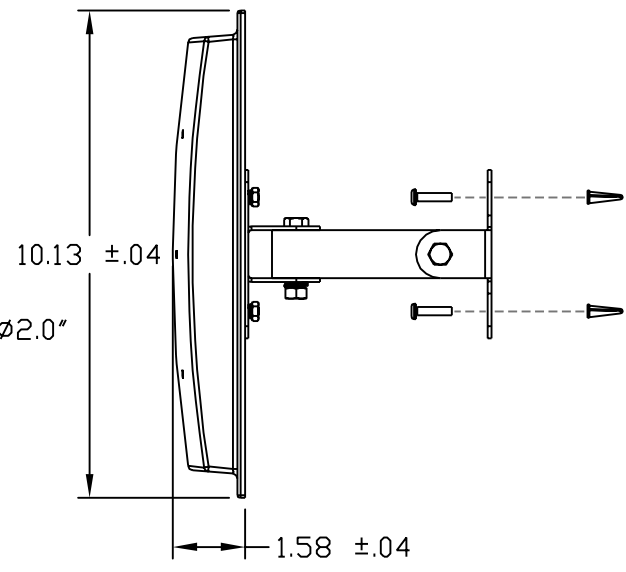
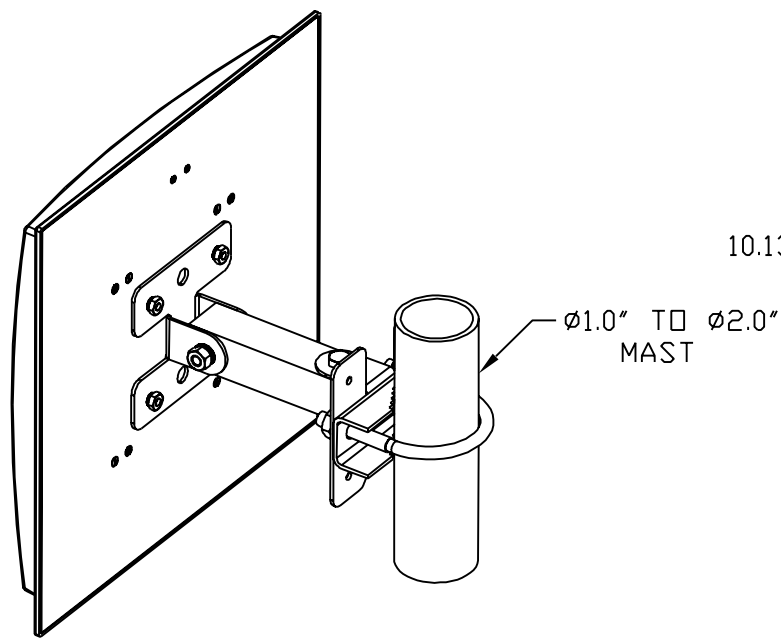
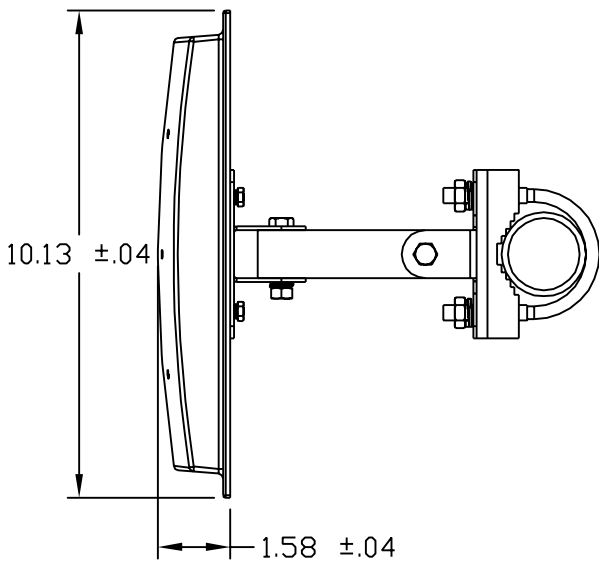
QTY	Description	
1	DISH W/BACK STRUCTURE	
1	FEED ASSEMBLY	
4	1/4-20 X 3/4" SS MS	
4	1/4" SS SPLIT LOCK WASHER	
4	1/4" SS FLAT WASHER	
2	3/8-16 X 2-3/4" CARRIAGE BOLT	
2	AL SPACER	
2	3/8" FLAT WASHER	
2	3/8" SPLIT LOCK WASHER	
2	3/8-16 HEX NUT	
8	3/8" SS FLAT WASHER	
8	3/8" SS SPLIT LOCK WASHER	
4	3/8-16 SS HEX NUT	
4	3/8-16 X 1" SS HH	
2	3/8-16 U-BOLT	
2	V-BLOCK	
1	MOUNTING BRACKET	
1	PIVOT BRACKET	

Parameter	Performance
Model Number	S24024PDSNF
Symbol Part Number	ML-2499-BPDA1-01
Frequency	2.40-2.50 GHz
Gain	23.5 dBi Min
Polarization	Linear, Vertical or Horizontal
VSWR	1.5:1 Max
HPBW, E-Plane	10°
HPBW, H-Plane	10°
Front to Back Ratio	35 dB
RF Power	50 W
RF Connector	N Female
Weight W/Mounting Hardware	13 lb
Wind Survival	120 mph (193 kph)

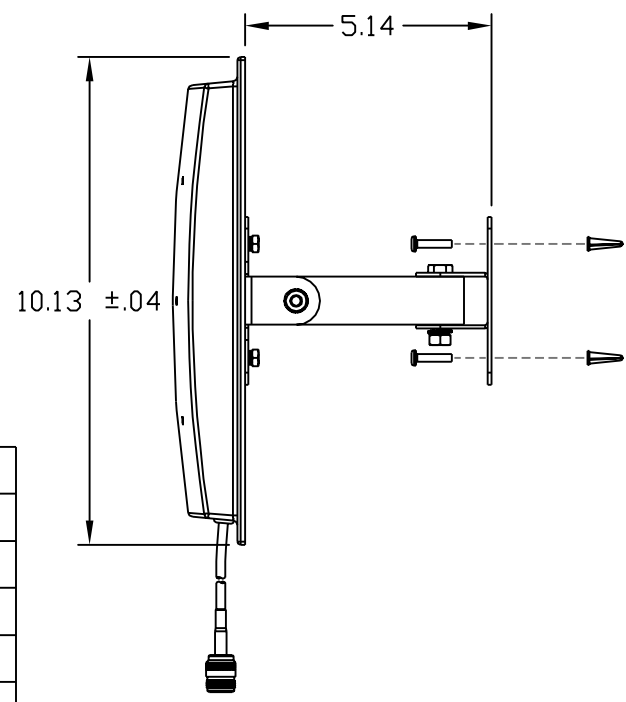
MATERIAL:	DRAWN S JOHNSON	DATE 10-14-02	<h1>CUSHCRAFT</h1> <p>48 PERIMETER ROAD MANCHESTER NH. 03108</p>
	ENGINEER B MATTIS	DATE 10-18-02	
DO NOT SCALE DRAWING	ENGINEERING MGR A ALEVY	DATE 10-18-02	<p>TITLE: <b>S24024PDSNF MOUNTING &amp; OUTLINE</b></p>
UNLESS OTHERWISE SPECIFIED TOLERANCES ARE: ANGLES ± 0.5° FRACTIONS ± 1/64" .XX ± 0.010" .XXX ± 0.005"	FINISH:		<p>DRAWING NO. <b>S24024PDSNFM0</b></p>
	SCALE NONE	SIZE B	<p>REV AB</p> <p>SHEET 1 OF 1</p>

CONFIDENTIAL  
© 2001, Cushcraft Corporation. Information contained in this document is of a proprietary and/or legally privileged nature. It may not be reproduced without express written permission of Cushcraft Corporation, Manchester, NH.

REVISION			
LTR	DESCRIPTION	DATE	INITIAL
AA	ORIGINAL	9-17-02	SWJ
AB	ADDED MOUNTING HARDWARE & SYMBOL	12-23-02	AMA
PART NUMBER (ECR#1092)			
AC	10.13±.04 WAS 10-5/32, 1.58±.04	2-11-03	AMA
WAS 1-1/2 (ECR#1166)			



MAST MOUNT CONFIGURATION



WALL MOUNT CONFIGURATION

MOUNTING HARDWARE

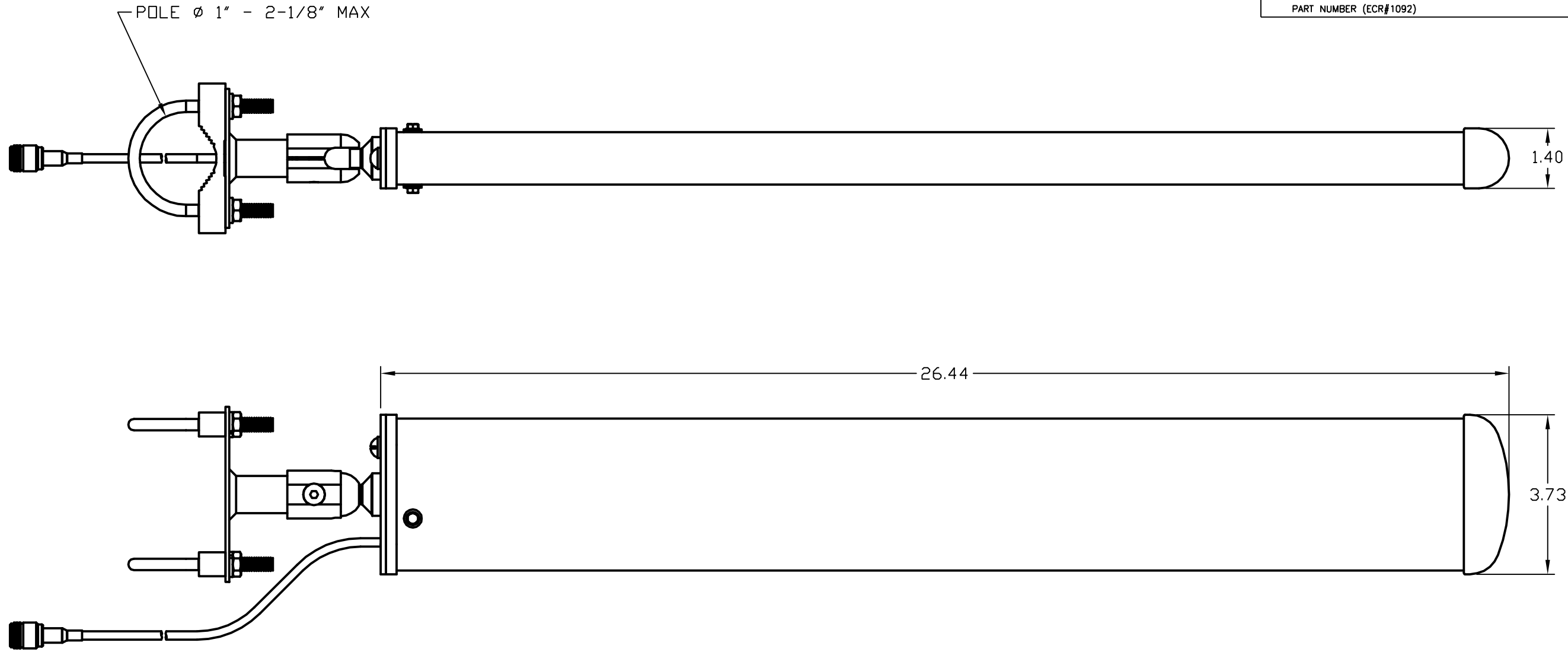
QTY	Description	
2	1/4" SS SPLIT LOCK WASHER	
2	1/4-20 SS HEX NUT	
2	1/4-20 X 1-1/2" SS HH	
4	#8 SS SPLIT LOCK WASHER	
4	#8-32 SS HEX NUT	
4	#8 PLASTIC WALL ANCHOR	
4	8/18 X 3/4" SS MS	
1	EXTENSION TUBE	
2	ARTICULATING MOUNT	
1	MAST CLAMP	
1	5/16-18 U-BOLT	
2	5/16 SS SPLIT LOCK WASHER	
2	5/16-18 SS HEX NUT	

Parameter	Performance
Model Number	S24014PS12NF
Symbol Part Number	ML-2499-BPNA3-01
Frequency	2400-2500 MHz
Gain	14.5 dBi Min.
Polarization	Linear, Vertical
VSWR	1.5:1
H Plane 3 dB Beamwidth	31°
E Plane 3 dB Beamwidth	29°
Front to Back Ratio	24 dB
Pigtail	12" Black Ultralink
RF Connector	Type N female
Power	50 Watts
Weight (Antenna Only)	1.5 lbs
Mounting Hardware	Zinc Plated Steel

MATERIAL:	DRAWN S JOHNSON	DATE 9-17-02	<h1>CUSHCRAFT</h1> <p>48 PERIMETER ROAD MANCHESTER NH. 03108</p>
	ENGINEER J MORROW	DATE 9-30-02	
DO NOT SCALE DRAWING	ENGINEERING MGR A ALEVY	DATE 9-30-02	<p>TITLE: <b>S24014PS12NF MOUNTING &amp; OUTLINE</b></p>
UNLESS OTHERWISE SPECIFIED TOLERANCES ARE: ANGLES ± 0.5° FRACTIONS ± 1/64" .XX ± 0.010" .XXX ± 0.005"	FINISH:		<p>DRAWING NO. <b>S24014PS12NFM0</b></p>
	SCALE 1:4	SIZE B	<p>REV AC</p> <p>SHEET 1 OF 1</p>

CONFIDENTIAL  
© 2001, Cushcraft Corporation. Information contained in this document is of a proprietary and/or legally privileged nature. It may not be reproduced without express written permission of Cushcraft Corporation, Manchester, NH.

REVISION			
LTR	DESCRIPTION	DATE	INITIAL
AA	ORIGINAL	10-16-02	SWJ
AB	ADDED MOUNTING HARDWARE & SYMBOL	12-23-02	AMA
PART NUMBER (ECR#1092)			



**MOUNTING HARDWARE**

QTY	Description	
4	5/16 SS SPLIT LOCK WASHER	
4	5/16-18 SS HEX NUT	
2	5/16-18 U-BOLT	
2	V-BLOCK	
1	UNIVERSAL MOUNT	

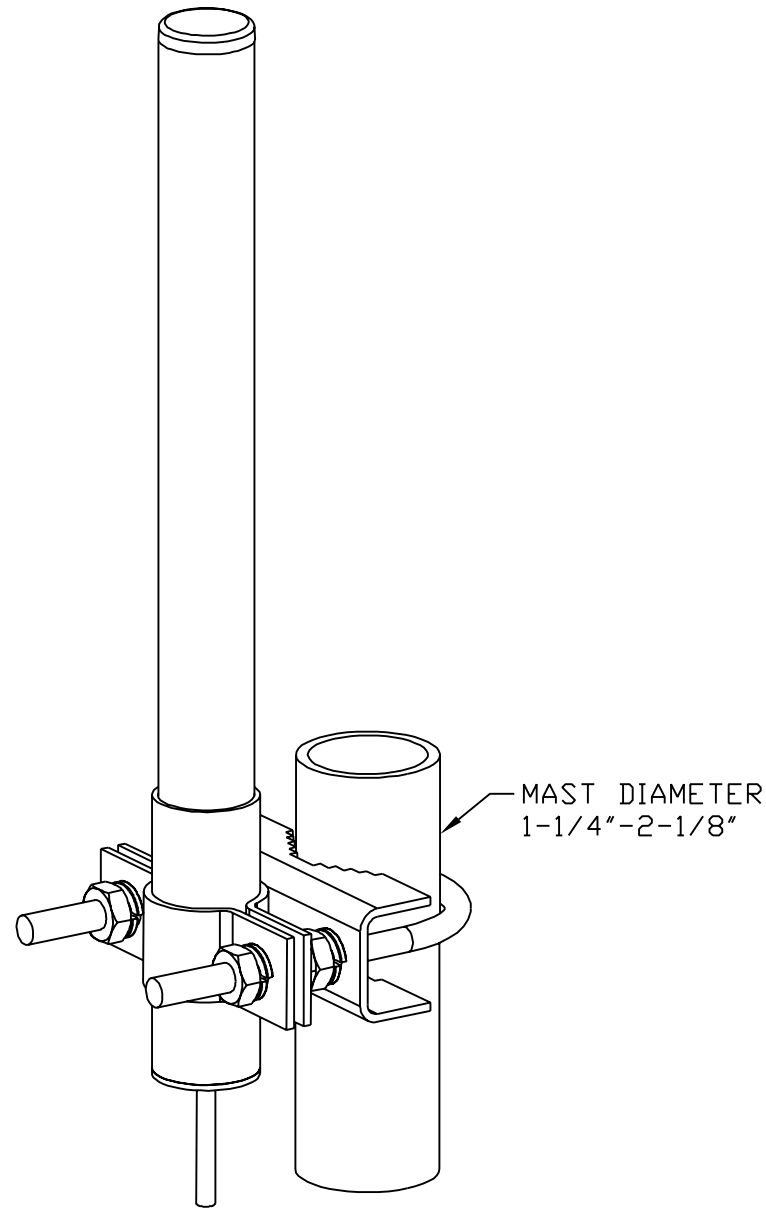
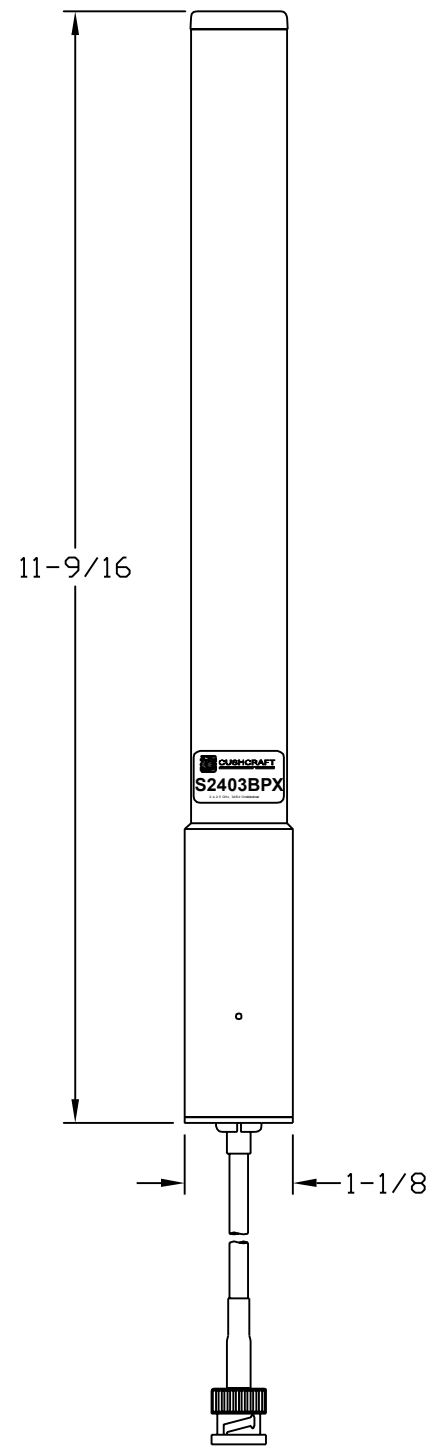
Parameter	Performance
Model No.	PC2415SNA
Symbol Part Number	ML-2499-BYGA2-01
Frequency	2400-2500 MHz
Gain	13.9 dBi
Polarization	Linear
VSWR	1.5:1 Max.
E-Plane 3 dB Beamwidth	30 Deg.
H-Plane 3 dB Beamwidth	34 Deg.
Front to Back Ratio	18 dB
Cable Length	12"
RF Connector	Type N (f)
Power	50 W
Weight	1.25 lb

MATERIAL:	DRAWN S JOHNSON	DATE 10-16-02	<b>CUSHCRAFT</b> 48 PERIMETER ROAD MANCHESTER NH. 03108
	ENGINEER B MATTIS	DATE 10-18-02	
DO NOT SCALE DRAWING	ENGINEERING MGR A ALEVY	DATE 10-18-02	TITLE: <b>PC2415SNA MOUNTING &amp; OUTLINE</b>
UNLESS OTHERWISE SPECIFIED TOLERANCES ARE: ANGLES ± 0.5° FRACTIONS ± 1/64" .XX ± 0.010" .XXX ± 0.005"	FINISH:		DRAWING NO. PC2415SNAMO
	SCALE NONE		SIZE B
			REV AB
			SHEET 1 OF 1

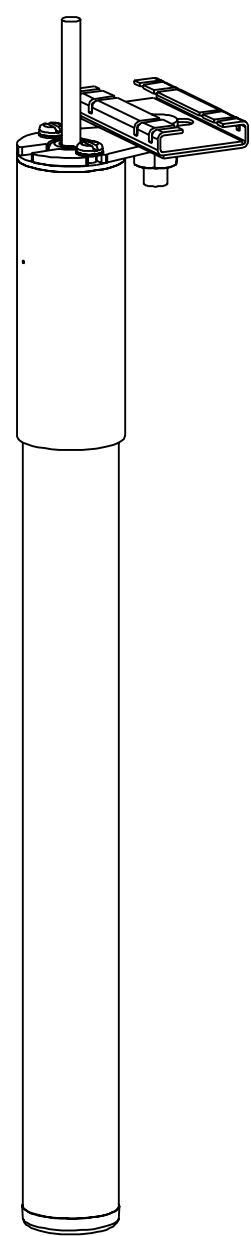


REVISION			
LTR	DESCRIPTION	DATE	INITIAL
AA	ORIGINAL	9-17-02	SWJ
AB	ADDED MOUNTING HARDWARE & SYMBOL	12-23-02	AMA
PART NUMBER (ECR#1092)			

Parameter	Performance
Model Number	S2403BPXS48RBN
Symbol Part Number	ML-2499-HPA3-01
Frequency	2400-2500 MHz
Gain	3 dBd
Polarization	Linear Vertical
VSWR	1.7:1
Elevation Plane 3 dB Beamwidth	31 Degrees
Azimuth Plane 3 dB beamwidth	Omnidirectional
Pigtail	48" CMP Plenum Cable
RF Connector	Reverse BNC
Power	50 Watts
Weight (Antenna)	0.3 lb



MAST MOUNT CONFIGURATION



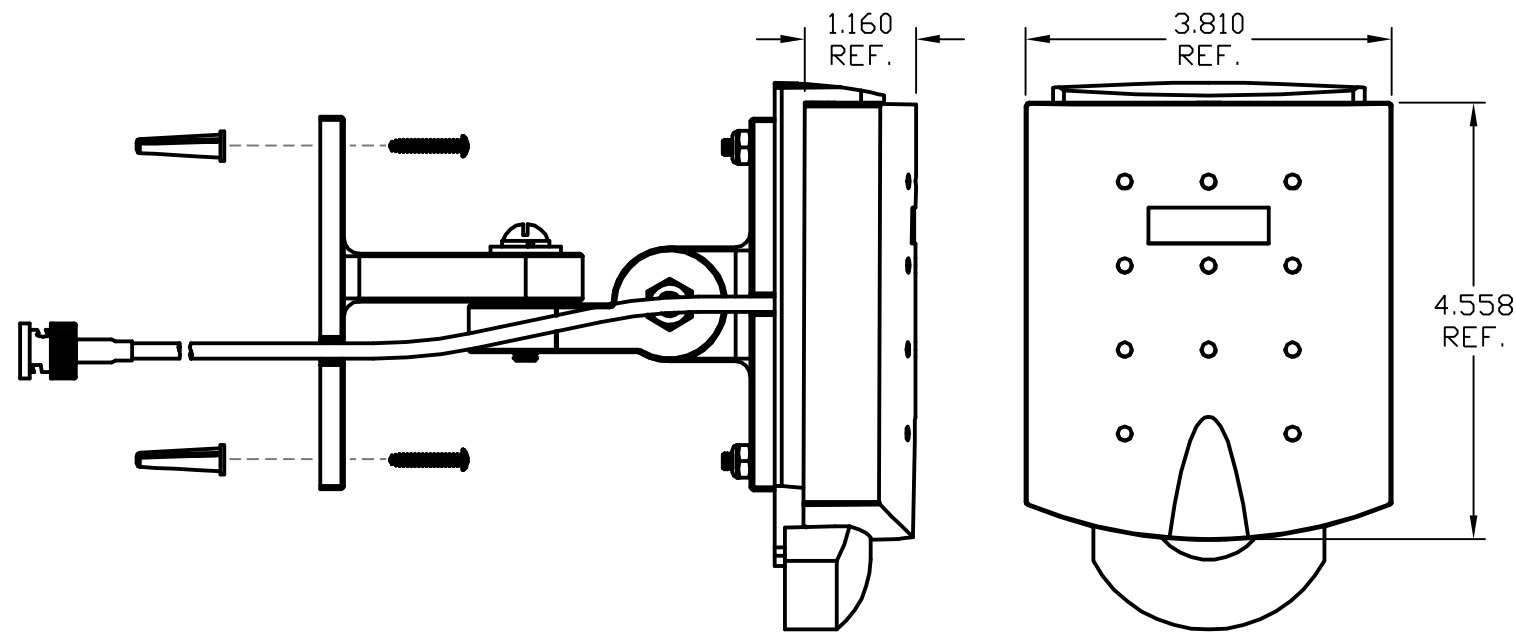
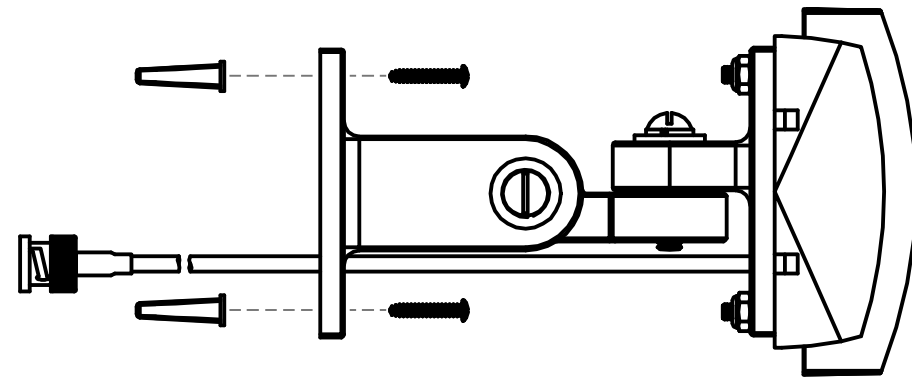
CEILING MOUNT CONFIGURATION (INDOOR ONLY)

MOUNTING HARDWARE

QTY	Description	
1	CEILING MOUNT ADAPTOR PLATE	
2	#6-32 X 1/4" SS SCREW	
2	#6 INT. TOOTH LOCK WASHER	
1	1/4" INT. TOOTH LOCK WASHER	
1	CEILING HANGER BRACKET	
1	5/16-18 U-BOLT	
4	5/16" SS LOCK WASHER	
6	5/16-18 SS HEX NUT	
2	OMNI CLAMP	
1	MAST CLAMP	

MATERIAL:	DRAWN S JOHNSON	DATE 9-17-02	<b>CUSHCRAFT</b> 48 PERIMETER ROAD MANCHESTER NH. 03108
	ENGINEER R LITTLEFIELD	DATE 9-23-02	
DO NOT SCALE DRAWING	ENGINEERING MGR A ALEVY	DATE 9-23-02	TITLE: <b>S2403BPXS48RBN MOUNTING &amp; OUTLINE</b>
UNLESS OTHERWISE SPECIFIED TOLERANCES ARE: ANGLES ± 0.5° FRACTIONS ± 1/64" .XX ± 0.010" .XXX ± 0.005"	FINISH:		DRAWING NO. S2403BPXS48RBNMO
	SCALE 1:2	SIZE B	REV AB SHEET 1 OF 1

CONFIDENTIAL  
 © 2001, Cushcraft Corporation. Information contained in this document is of a proprietary and/or legally privileged nature. It may not be reproduced without express written permission of Cushcraft Corporation, Manchester, NH.



REVISION			
LTR	DESCRIPTION	DATE	INITIAL
AA	ORIGINAL	10-15-02	SWJ
AB	ADDED MOUNTING HARDWARE & SYMBOL	12-23-02	AMA
PART NUMBER (ECR#1092)			
AC	S.T.I. P/N WAS ML-2499-7PNA2-01 (ECR#1134)	1-21-03	AMA

**MOUNTING HARDWARE**

QTY	Description	
2	1/4-20 X 1-1/4" SS MS	
2	1/4" SS FLAT WASHER	
2	1/4" SS SPLIT LOCK WASHER	
2	1/4-20 SS HEX NUT	
4	#8-32 SS/NYLON HEX NUT	
4	#8-32 X 5/8" SS MS	
4	#8 PLASTIC WALL ANCHOR	
4	8/18 X 3/4" SS MS	
1	ALL-PURPOSE MOUNT ARM	
1	ALL-PURPOSE WALL MOUNT	
1	ALL-PURPOSE ANT. MOUNT	
1	WALL MOUNT	
1	WALL MOUNT SKIRT	

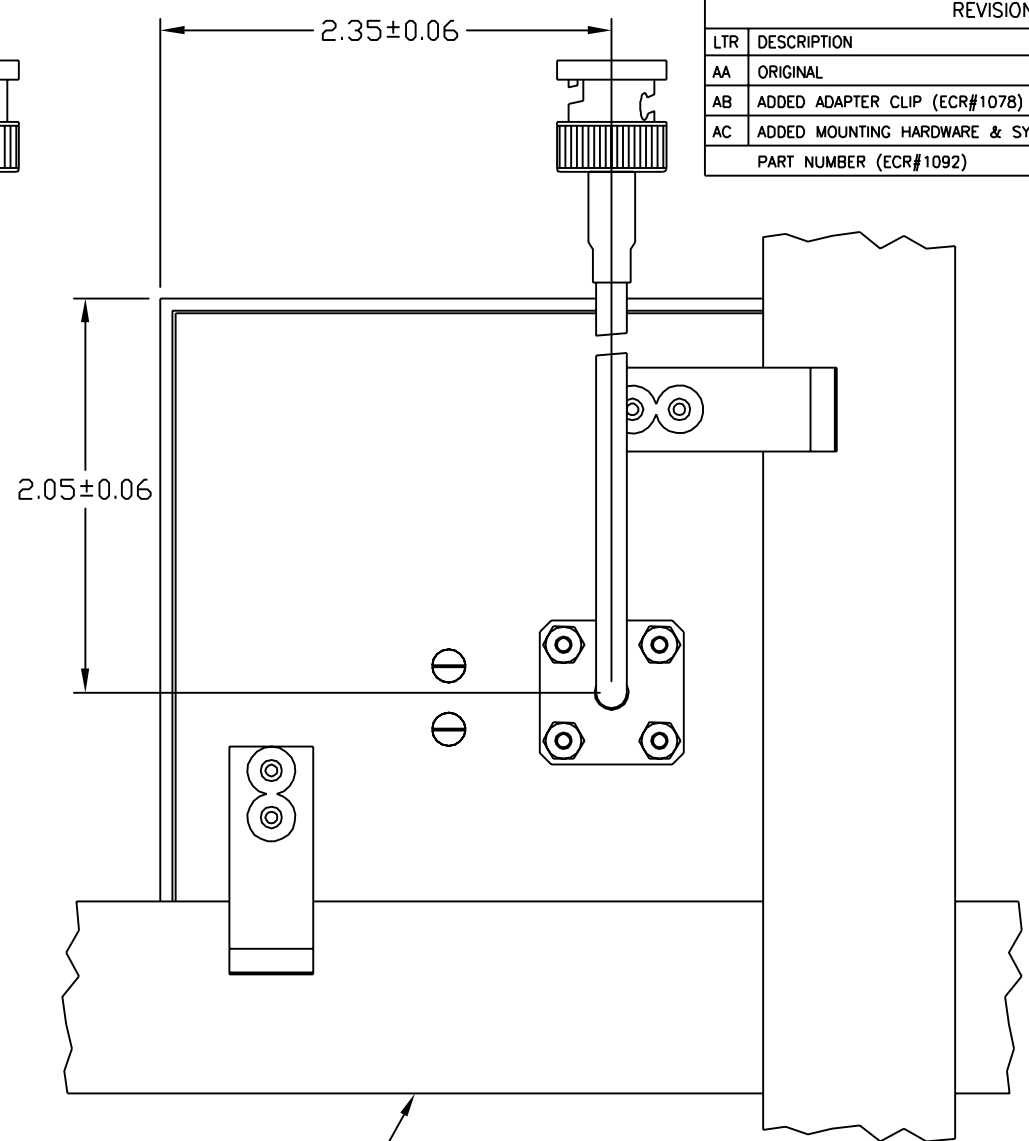
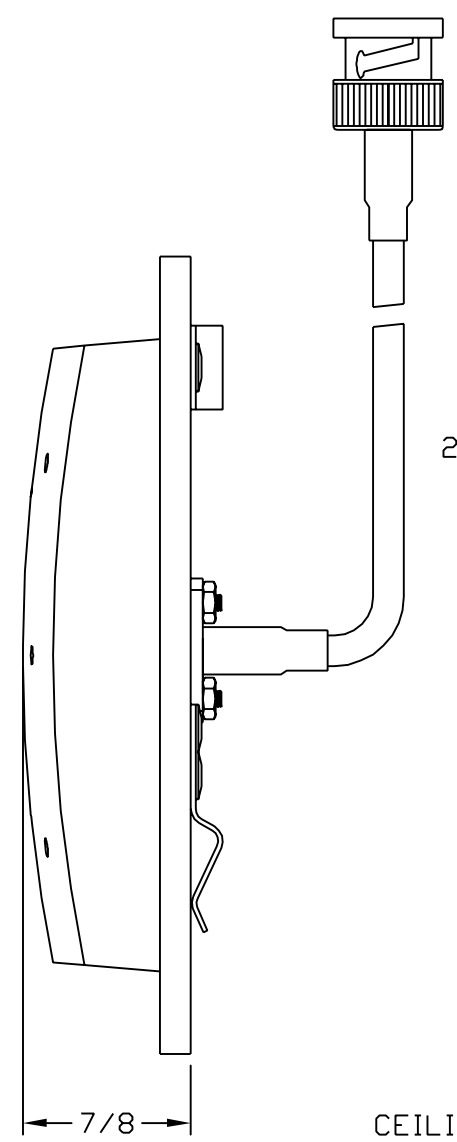
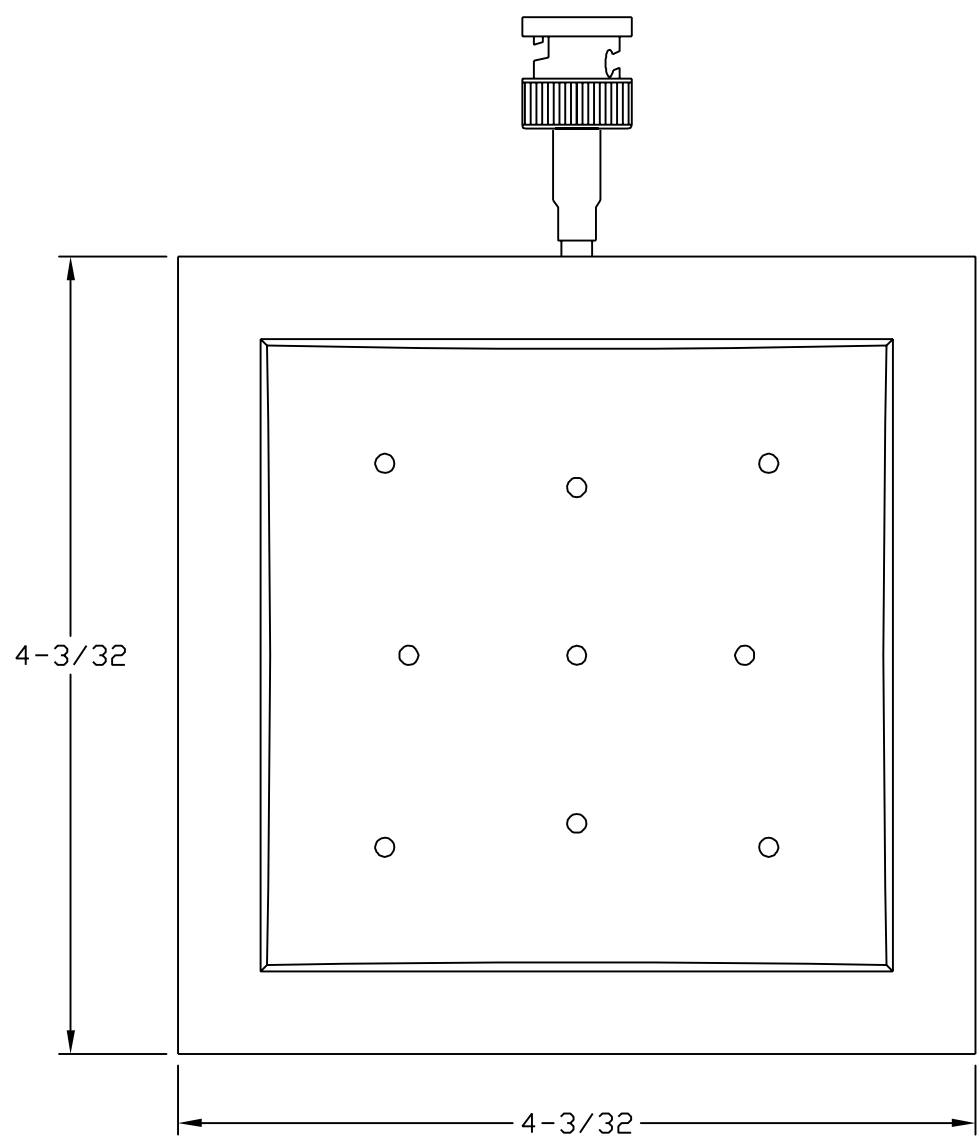
Parameter	Performance
Model No.	S2407MPAS48RBN
Symbol Part Number	ML-2499-PNAHD-01
Frequency	2400-2500 Mhz
Gain	7.5 dBi
Polarization	Linear, Vertical
VSWR	1.7:1 Typ.
Azimuth Plane 3 dB Beamwidth	65°
Elevation Plane 3 dB Beamwidth	50°
Front to Back Ratio	12 dB
Cable Length	48"
RF Connector	Reverse BNC
Power	50 W
Weight	0.5 lb

MATERIAL:	DRAWN S JOHNSON	DATE 10-15-02	<p><b>CUSHCRAFT</b> 48 PERIMETER ROAD MANCHESTER NH. 03108</p>
	ENGINEER B MATTIS	DATE 10-18-02	
DO NOT SCALE DRAWING	ENGINEERING MGR A ALEVY	DATE 10-18-02	<p>TITLE: <b>S2407MPAS48RBN MOUNTING &amp; OUTLINE</b></p>
UNLESS OTHERWISE SPECIFIED TOLERANCES ARE: ANGLES ± 0.5° FRACTIONS ± 1/64" .XX ± 0.010" .XXX ± 0.005"	FINISH:		<p>DRAWING NO. S2407MPAS48RBNMO</p>
			<p>REV AC</p>
	SCALE 1:2	SIZE B	SHEET 1 OF 1

CONFIDENTIAL  
© 2001, Cushcraft Corporation. Information contained in this document is of a proprietary and/or legally privileged nature. It may not be reproduced without express written permission of Cushcraft Corporation, Manchester, NH.

REVISION			
LTR	DESCRIPTION	DATE	INITIAL
AA	ORIGINAL	10-14-02	SWJ
AB	ADDED ADAPTER CLIP (ECR#1078)	12-3-02	AMA
AC	ADDED MOUNTING HARDWARE & SYMBOL	12-23-02	AMA

PART NUMBER (ECR#1092)



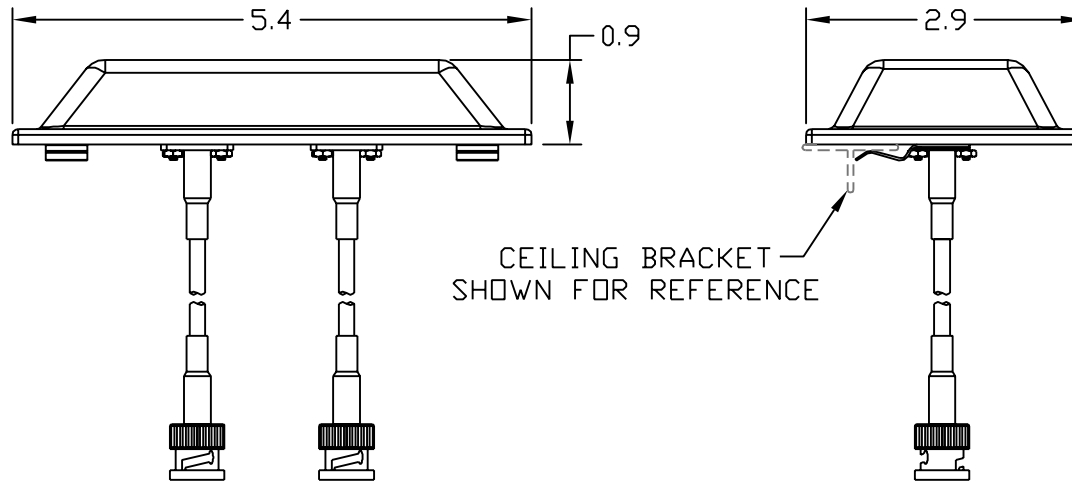
PARAMETER	PERFORMANCE
Model Number	SQ2403PS48RBN
Symbol Part Number	ML-2499-SD3-01
Frequency	2400-2500 MHz
Gain	3.5 dBi
Polarization	Vertical Linear
VSWR	1.5:1 Nominal (2.0:1 Max.)
Azimuth Plane Beamwidth	Omnidirectional
Elevation Plane 3 dB Beamwidth	45° (Peak at 53°)
Cable Type	Plenum rated RG-58
Cable Length	48 in.
RF Connector	Reverse BNC
Power	10 Watts
Antenna Weight (excluding cable)	3.2 oz.

**MOUNTING HARDWARE**

QTY	Description	
2	RECESSED TILE ADAPTER CLIP	

MATERIAL:	DRAWN S JOHNSON	DATE 10-14-02	<b>CUSHCRAFT</b> 48 PERIMETER ROAD MANCHESTER NH. 03108
	ENGINEER B MATTIS	DATE 10-18-02	
DO NOT SCALE DRAWING	ENGINEERING MGR A ALEVY	DATE 10-18-02	TITLE: <b>SQ2403PS48RBN MOUNTING &amp; OUTLINE</b>
UNLESS OTHERWISE SPECIFIED TOLERANCES ARE: ANGLES ± 0.5° FRACTIONS ± 1/64" .XX ± 0.010" .XXX ± 0.005"	FINISH:		DRAWING NO. SQ2403PS48RBNMO
SCALE 1:1			REV AC
SIZE B		SHEET 1 OF 1	

CONFIDENTIAL  
© 1997, Cushcraft Corporation. Information contained in this document is of a proprietary and/or legally privileged nature. It may not be reproduced without express written permission of Cushcraft Corporation, Manchester, NH.



REVISION			
LTR	DESCRIPTION	DATE	INITIAL
AA	ORIGINAL	10-14-02	SWJ
AB	ADDED ADAPTER CLIP (ECR#1078)	12-3-02	AMA
AC	ADDED MOUNTING HARDWARE & SYMBOL	12-23-02	AMA
PART NUMBER (ECR#1092)			

CEILING BRACKET  
SHOWN FOR REFERENCE

**MOUNTING HARDWARE**

QTY	Description	
2	RECESSED TILE ADAPTER CLIP	

PARAMETER	PERFORMANCE
Model Number	S2402DSS48RBN
Symbol Part Number	ML-2499-SDD1-01
Frequency	2400-2500 MHz
Gain	2 dBi
Polarization	Vertical Linear
VSWR	1.7:1 Typ.
Azimuth Plane Beamwidth	Omni Directional
Elevation Plane 3 dB Beamwidth	80°
Cable Length	48"
RF Connectors	Reverse BNC (2X)
Power	5 Watts
Antenna Weight	0.4 lbs (0.18 kg)
Radome Color	White
Mounting	Ceiling Clip

MATERIAL:	DRAWN	DATE	<b>CUSHCRAFT</b>
	S JOHNSON	10-14-02	
DO NOT SCALE DRAWING	ENGINEER	DATE	48 PERIMETER ROAD MANCHESTER NH. 03108
	B MATTIS	10-18-02	TITLE:
UNLESS OTHERWISE SPECIFIED TOLERANCES ARE:	ENGINEERING MGR	DATE	S2402DSS48RBN
	A ALEVY	10-18-02	MOUNTING & OUTLINE
ANGLES ± 0.5°	FINISH:	DRAWING NO.	REV
FRACTIONS ± 1/64"		S2402DSS48RBNMO	AC
.XX ± 0.010"		SCALE 1:2	SHEET 1 OF 1
.XXX ± 0.005"		SIZE A	

CONFIDENTIAL  
© 2000, Cushcraft Corporation. Information contained in this document is of a proprietary and/or legally privileged nature. It may not be reproduced without express written permission of Cushcraft Corporation, Manchester, NH.