

System Validation - D1800V2 S/N: 294

(Input power: 250 mW)

SAM; Flat

Probe: ET3DV6 - SN1578; ConvF(5.50,5.50,5.50); Crest factor: 1.0

Head 1800 MHz: $\sigma = 1.37$ mho/m $\epsilon_r = 39.7$ $\rho = 1.00$ g/cm³

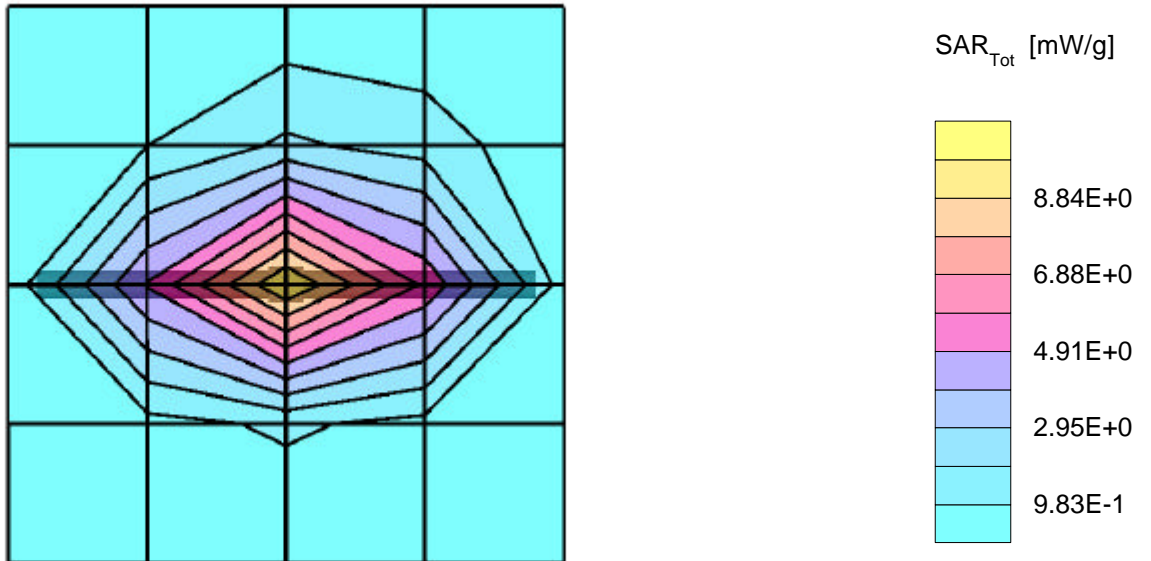
Cube 5x5x7: Peak: 16.6 mW/g, SAR (1g): 9.07 mW/g, SAR (10g): 4.78 mW/g, (Worst-case extrapolation)

Penetration depth: 8.5 (8.0, 9.4) [mm]

Powerdrift: 0.02 dB

Ambient Temperature (degree C): 23

Liquid Temperature (degree C): 21.5



System Validation - D1800V2 S/N: 294

(Input power: 250 mW)

SAM;

Probe: ET3DV6 - SN1578; ConvF(5.50,5.50,5.50); Crest factor: 1.0

Head 1800 MHz: $\sigma = 1.37 \text{ mho/m}$ $\epsilon_r = 39.7$ $\rho = 1.00 \text{ g/cm}^3$

: , , ()

Penetration depth: 8.5 (8.0, 9.4) [mm]

Ambient Temperature (degree C): 23

Liquid Temperature (degree C): 21.5

