

# Cognitive\_RD222424-0H5; Flat position; Frequency: 2412 MHz With holster)

Frequency: 2450 MHz; Crest factor: 1.0

Medium: Muscle 2450 MHz:  $\sigma = 2.04$  mho/m  $\epsilon_r = 51.9$   $\rho = 1.00$  g/cm<sup>3</sup>

SAM Phantom; Flat Section; Position: (90°,90°)

Probe: ET3DV6 - SN1578; ConvF(4.10,4.10,4.10);

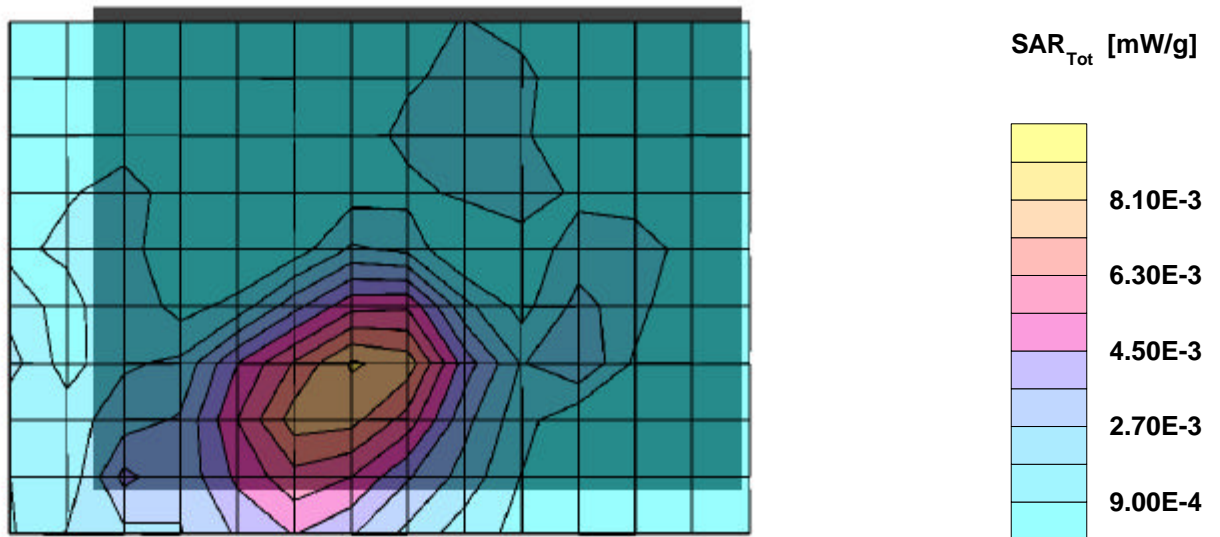
SAR:Cube 5x5x7: Peak: 0.0148 mW/g, SAR (1g): 0.0077 mW/g, SAR (10g): 0.0042 mW/g, (Worst-case extrapolation)

Penetration depth: 7.2 (6.8, 8.2) [mm]; Powerdrift: -0.19 dB

Coarse: Dx = 14.0, Dy = 14.0, Dz = 10.0

Ambient Temperature (degree C): 23

Liquid Temperature (degree C): 21.1



# Cognitive\_RD222424-0H5; Flat position; Frequency: 2412 MHz With holster)

Frequency: 2450 MHz; Crest factor: 1.0

Medium: Muscle 2450 MHz:  $\sigma = 2.04$  mho/m  $\epsilon_r = 51.9$   $\rho = 1.00$  g/cm<sup>3</sup>

SAM Phantom; Section; Position:

Probe: ET3DV6 - SN1578; ConvF(4.10,4.10,4.10);

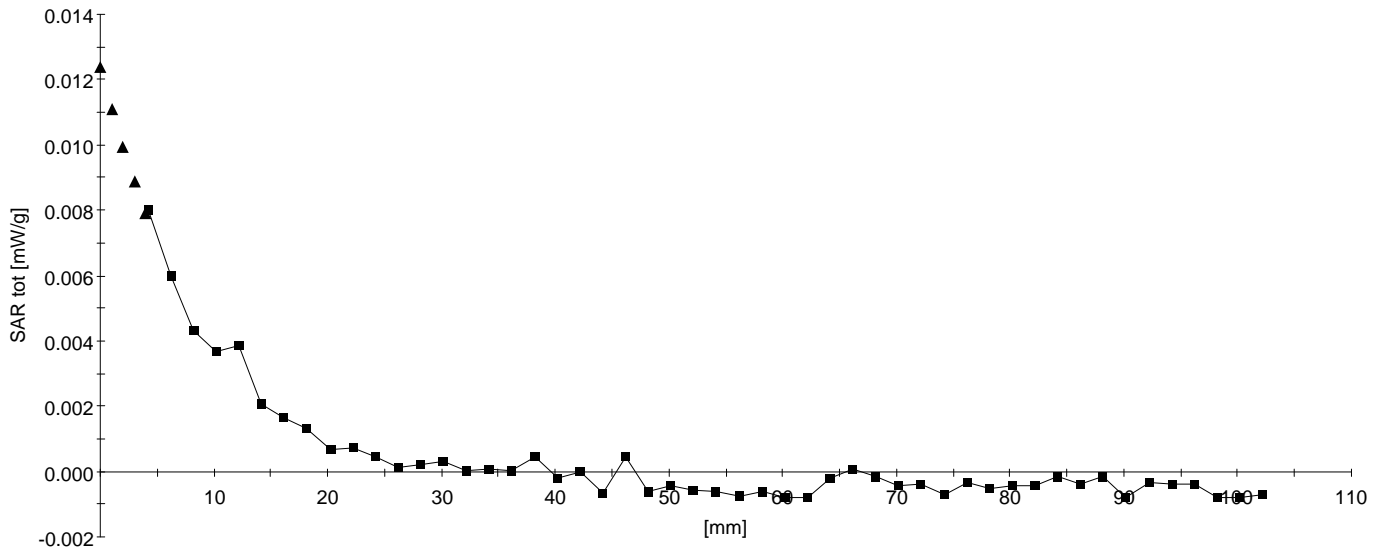
SAR:: , , ()

Penetration depth: 8.1 (7.5, 8.6) [mm];

Z-Axis: Dx = 0.0, Dy = 0.0, Dz = 2.0

Ambient Temperature (degree C): 23

Liquid Temperature (degree C): 21.1



# Cognitive\_RD222424-0H5; Flat position; Frequency: 2437 MHz With holster)

Frequency: 2450 MHz; Crest factor: 1.0

Medium: Muscle 2450 MHz:  $\sigma = 2.04$  mho/m  $\epsilon_r = 51.9$   $\rho = 1.00$  g/cm<sup>3</sup>

SAM Phantom; Flat Section; Position: (90°,90°)

Probe: ET3DV6 - SN1578; ConvF(4.10,4.10,4.10);

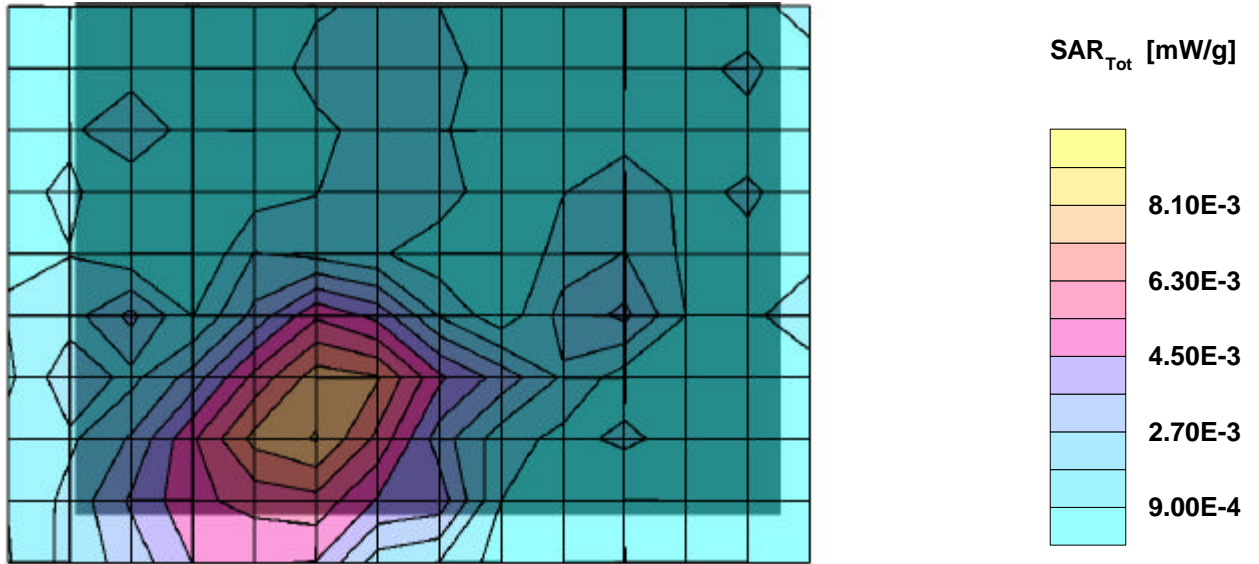
SAR:Cube 5x5x7: Peak: 0.0135 mW/g, SAR (1g): 0.0072 mW/g, SAR (10g): 0.0041 mW/g, (Worst-case extrapolation)

Penetration depth: 7.1 (6.7, 7.5) [mm]; Powerdrift: -0.16 dB

Coarse: Dx = 14.0, Dy = 14.0, Dz = 10.0

Ambient Temperature (degree C): 23

Liquid Temperature (degree C): 21.2



# Cognitive\_RD222424-0H5; Flat position; Frequency: 2437 MHz With holster)

Frequency: 2450 MHz; Crest factor: 1.0

Medium: Muscle 2450 MHz:  $\sigma = 2.04$  mho/m  $\epsilon_r = 51.9$   $\rho = 1.00$  g/cm<sup>3</sup>

SAM Phantom; Section; Position:

Probe: ET3DV6 - SN1578; ConvF(4.10,4.10,4.10);

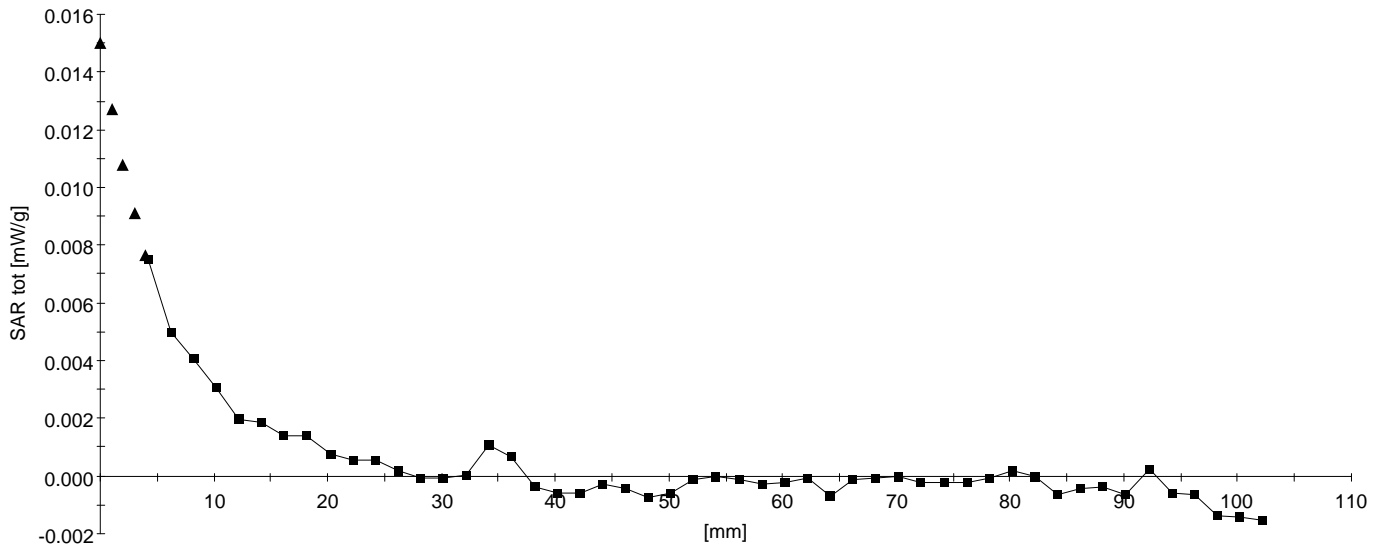
SAR:: , , ()

Penetration depth: 7.4 (5.9, 10.2) [mm];

Z-Axis: Dx = 0.0, Dy = 0.0, Dz = 2.0

Ambient Temperature (degree C): 23

Liquid Temperature (degree C): 21.2



# Cognitive\_RD222424-0H5; Flat position; Frequency: 2462 MHz With holster)

Frequency: 2450 MHz; Crest factor: 1.0

Medium: Muscle 2450 MHz:  $\sigma = 2.04$  mho/m  $\epsilon_r = 51.9$   $\rho = 1.00$  g/cm<sup>3</sup>

SAM Phantom; Flat Section; Position: (90°,90°)

Probe: ET3DV6 - SN1578; ConvF(4.10,4.10,4.10);

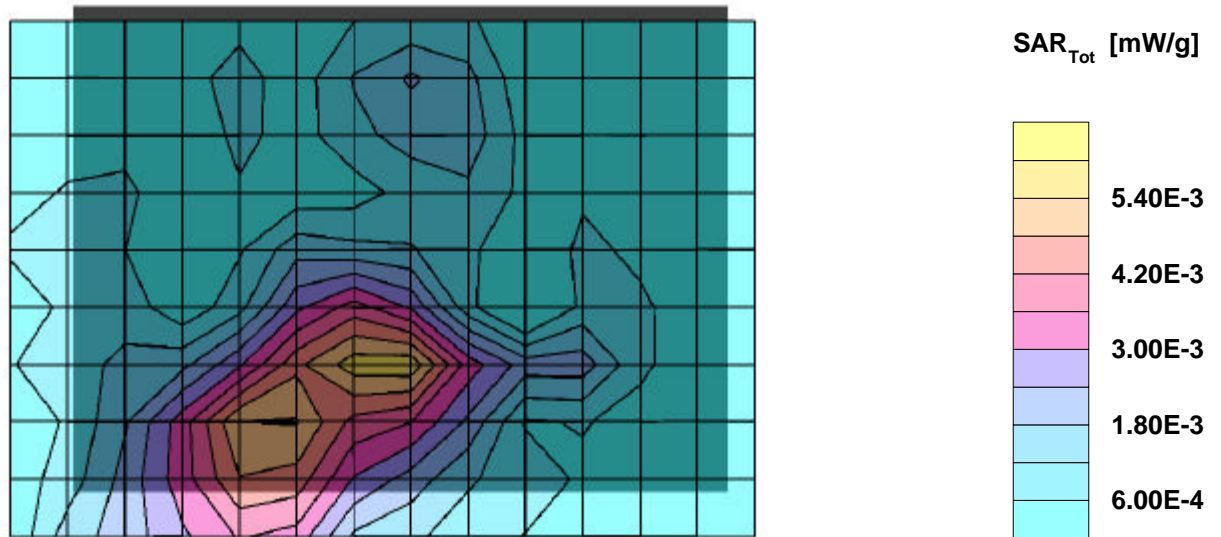
SAR:Cube 5x5x7: Peak: 0.0110 mW/g, SAR (1g): 0.0054 mW/g, SAR (10g): 0.0030 mW/g, (Worst-case extrapolation)

Penetration depth: 10.1 (7.0, 13.3) [mm]; Powerdrift: -0.17 dB

Coarse: Dx = 14.0, Dy = 14.0, Dz = 10.0

Ambient Temperature (degree C): 23

Liquid Temperature (degree C): 21.1



# Cognitive\_RD222424-0H5; Flat position; Frequency: 2462 MHz With holster)

Frequency: 2450 MHz; Crest factor: 1.0

Medium: Muscle 2450 MHz:  $\sigma = 2.04$  mho/m  $\epsilon_r = 51.9$   $\rho = 1.00$  g/cm<sup>3</sup>

SAM Phantom; Section; Position:

Probe: ET3DV6 - SN1578; ConvF(4.10,4.10,4.10);

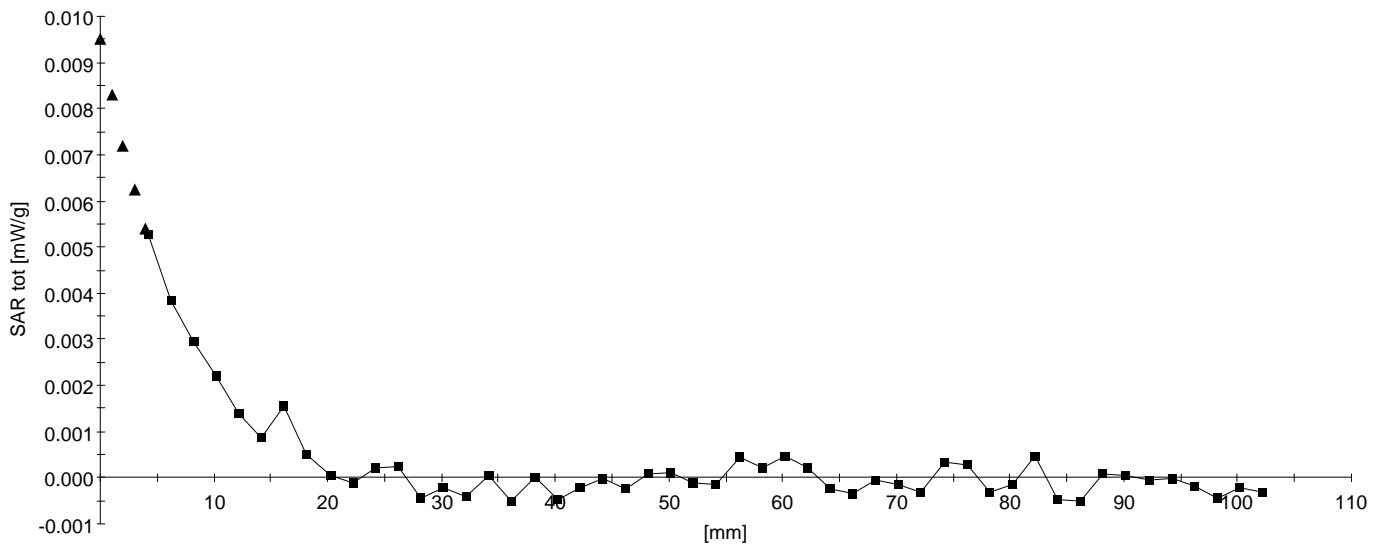
SAR:: , , ()

Penetration depth: 6.6 (6.4, 6.8) [mm];

Z-Axis: Dx = 0.0, Dy = 0.0, Dz = 2.0

Ambient Temperature (degree C): 23

Liquid Temperature (degree C): 21.1



# Cognitive\_RD222424-0H5; Flat position; Frequency: 2412 MHz Without holster)

Frequency: 2450 MHz; Crest factor: 1.0

Medium: Muscle 2450 MHz:  $\sigma = 2.04$  mho/m  $\epsilon_r = 51.9$   $\rho = 1.00$  g/cm<sup>3</sup>

SAM Phantom; Flat Section; Position: (90°,90°)

Probe: ET3DV6 - SN1578; ConvF(4.10,4.10,4.10);

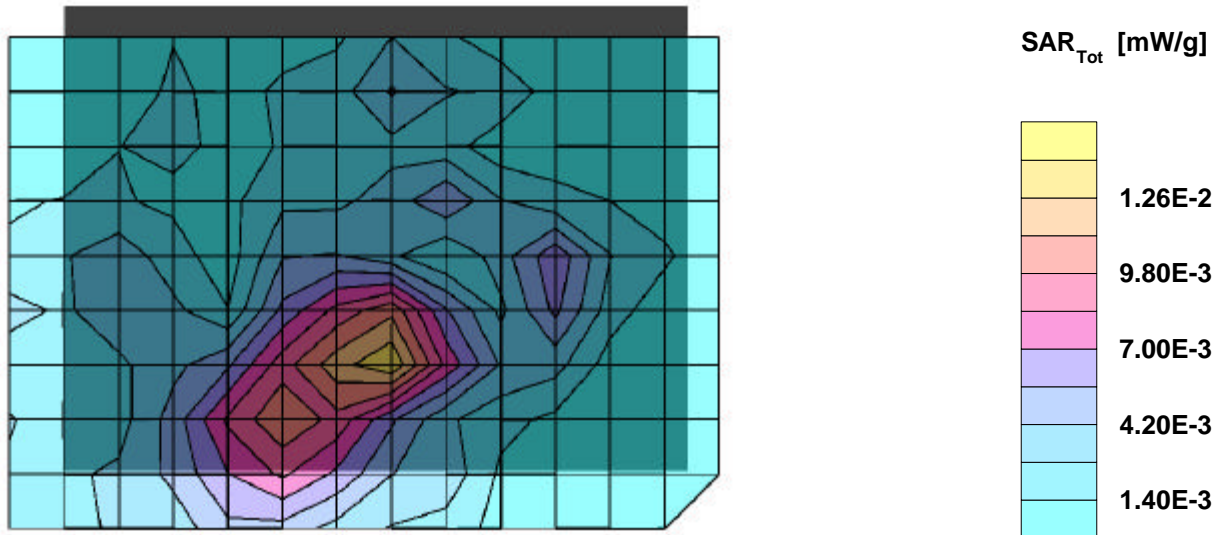
SAR:Cube 5x5x7: Peak: 0.0276 mW/g, SAR (1g): 0.0138 mW/g, SAR (10g): 0.0069 mW/g, (Worst-case extrapolation)

Penetration depth: 7.1 (6.8, 7.6) [mm]; Powerdrift: -0.16 dB

Coarse: Dx = 14.0, Dy = 14.0, Dz = 10.0

Ambient Temperature (degree C): 23

Liquid Temperature (degree C): 21.2



# Cognitive\_RD222424-0H5; Flat position; Frequency: 2412 MHz Without holster)

Frequency: 2450 MHz; Crest factor: 1.0

Medium: Muscle 2450 MHz:  $\sigma = 2.04$  mho/m  $\epsilon_r = 51.9$   $\rho = 1.00$  g/cm<sup>3</sup>

SAM Phantom; Section; Position:

Probe: ET3DV6 - SN1578; ConvF(4.10,4.10,4.10);

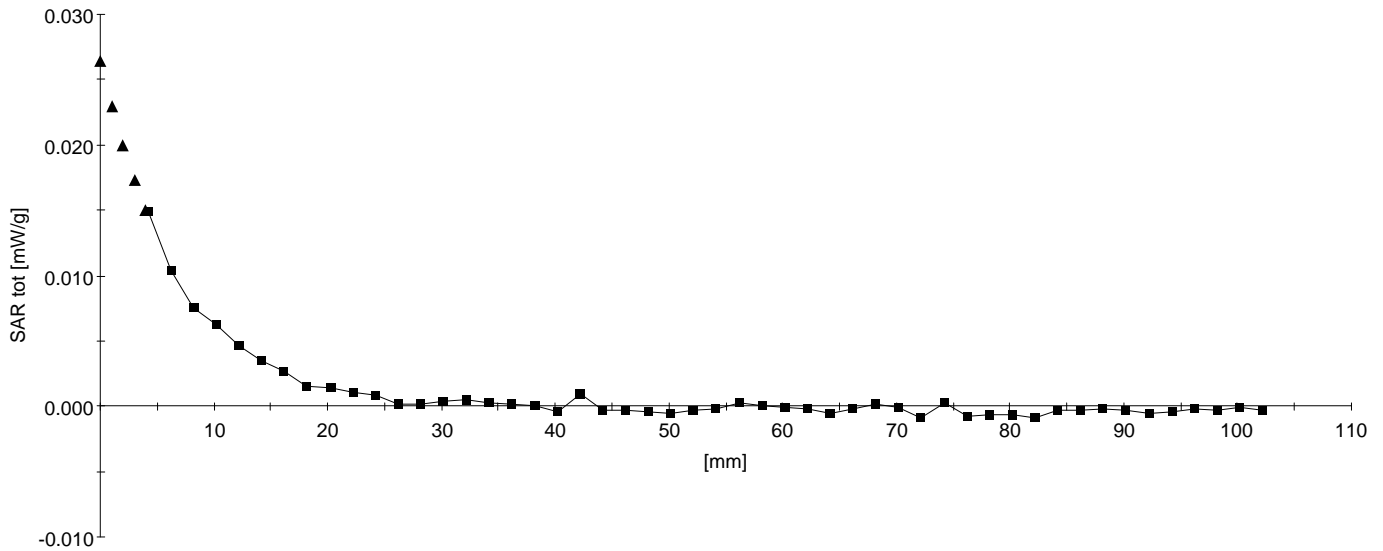
SAR:: , , ()

Penetration depth: 6.8 (6.6, 7.1) [mm];

Z-Axis: Dx = 0.0, Dy = 0.0, Dz = 2.0

Ambient Temperature (degree C): 23

Liquid Temperature (degree C): 21.2





# Cognitive\_RD222424-0H5; Flat position; Frequency: 2437 MHz Without holster)

Frequency: 2450 MHz; Crest factor: 1.0

Medium: Muscle 2450 MHz:  $\sigma = 2.04$  mho/m  $\epsilon_r = 51.9$   $\rho = 1.00$  g/cm<sup>3</sup>

SAM Phantom; Flat Section; Position: (90°,90°)

Probe: ET3DV6 - SN1578; ConvF(4.10,4.10,4.10);

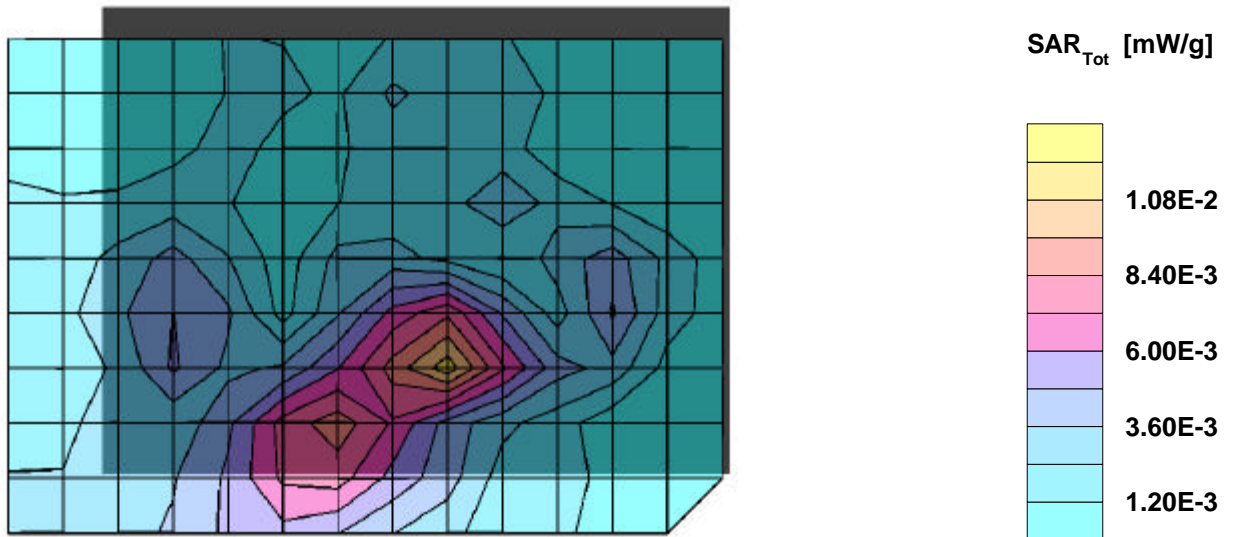
SAR:Cube 5x5x7: Peak: 0.0238 mW/g, SAR (1g): 0.0113 mW/g, SAR (10g): 0.0054 mW/g, (Worst-case extrapolation)

Penetration depth: 7.1 (6.1, 9.8) [mm]; Powerdrift: -0.07 dB

Coarse: Dx = 14.0, Dy = 14.0, Dz = 10.0

Ambient Temperature (degree C): 23

Liquid Temperature (degree C): 21.1



# Cognitive\_RD222424-0H5; Flat position; Frequency: 2437 MHz Without holster)

Frequency: 2450 MHz; Crest factor: 1.0

Medium: Muscle 2450 MHz:  $\sigma = 2.04$  mho/m  $\epsilon_r = 51.9$   $\rho = 1.00$  g/cm<sup>3</sup>

SAM Phantom; Section; Position:

Probe: ET3DV6 - SN1578; ConvF(4.10,4.10,4.10);

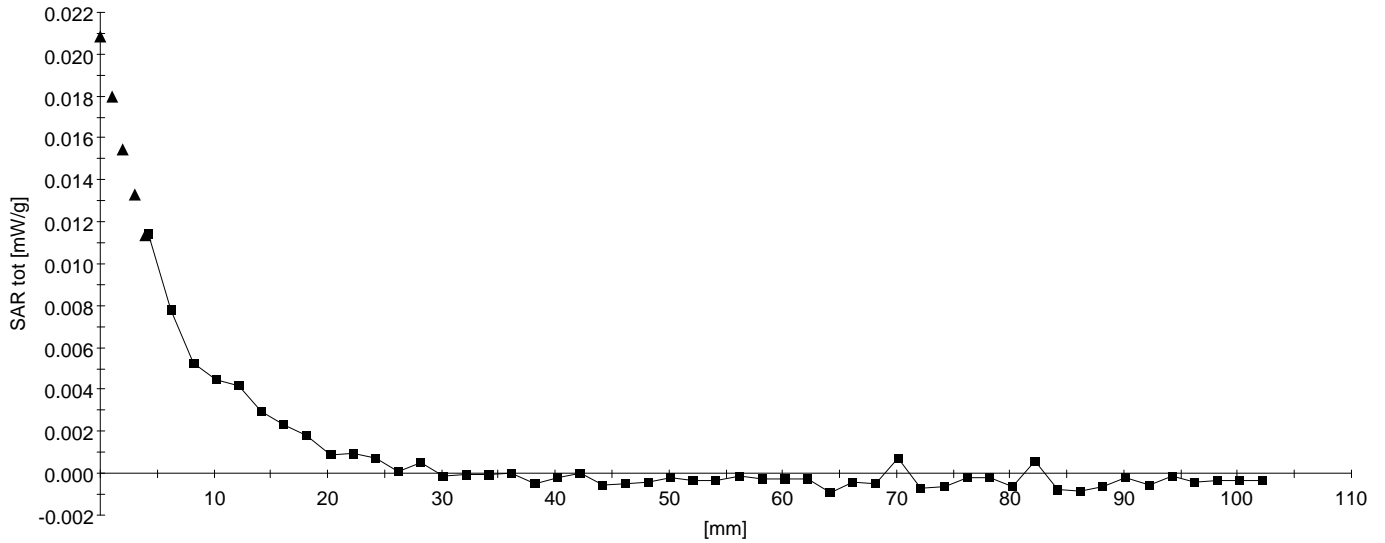
SAR:: , , ()

Penetration depth: 7.3 (6.5, 8.9) [mm];

Z-Axis: Dx = 0.0, Dy = 0.0, Dz = 2.0

Ambient Temperature (degree C): 23

Liquid Temperature (degree C): 21.1



# Cognitive\_RD222424-0H5; Flat position; Frequency: 2462 MHz Without holster)

Frequency: 2450 MHz; Crest factor: 1.0

Medium: Muscle 2450 MHz:  $\sigma = 2.04$  mho/m  $\epsilon_r = 51.9$   $\rho = 1.00$  g/cm<sup>3</sup>

SAM Phantom; Flat Section; Position: (90°,90°)

Probe: ET3DV6 - SN1578; ConvF(4.10,4.10,4.10);

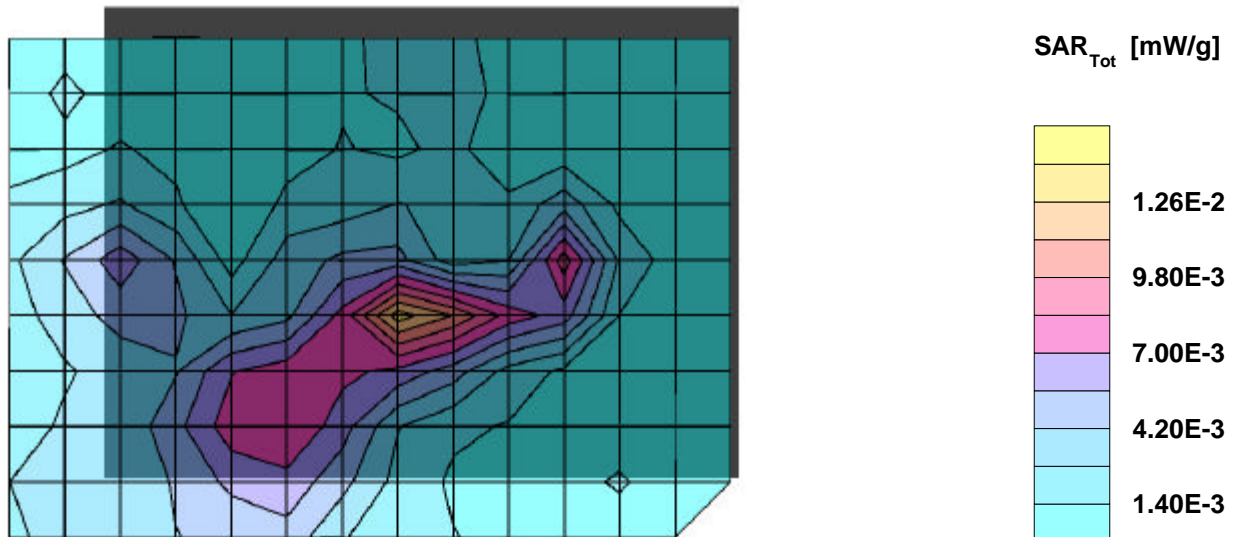
SAR:Cube 5x5x7: Peak: 0.0269 mW/g, SAR (1g): 0.0120 mW/g, SAR (10g): 0.0055 mW/g, (Worst-case extrapolation)

Penetration depth: 7.2 (5.8, 10.0) [mm]; Powerdrift: -0.17 dB

Coarse: Dx = 14.0, Dy = 14.0, Dz = 10.0

Ambient Temperature (degree C): 23

Liquid Temperature (degree C): 21.1



# Cognitive\_RD222424-0H5; Flat position; Frequency: 2462 MHz Without holster)

Frequency: 2450 MHz; Crest factor: 1.0

Medium: Muscle 2450 MHz:  $\sigma = 2.04$  mho/m  $\epsilon_r = 51.9$   $\rho = 1.00$  g/cm<sup>3</sup>

SAM Phantom; Section; Position:

Probe: ET3DV6 - SN1578; ConvF(4.10,4.10,4.10);

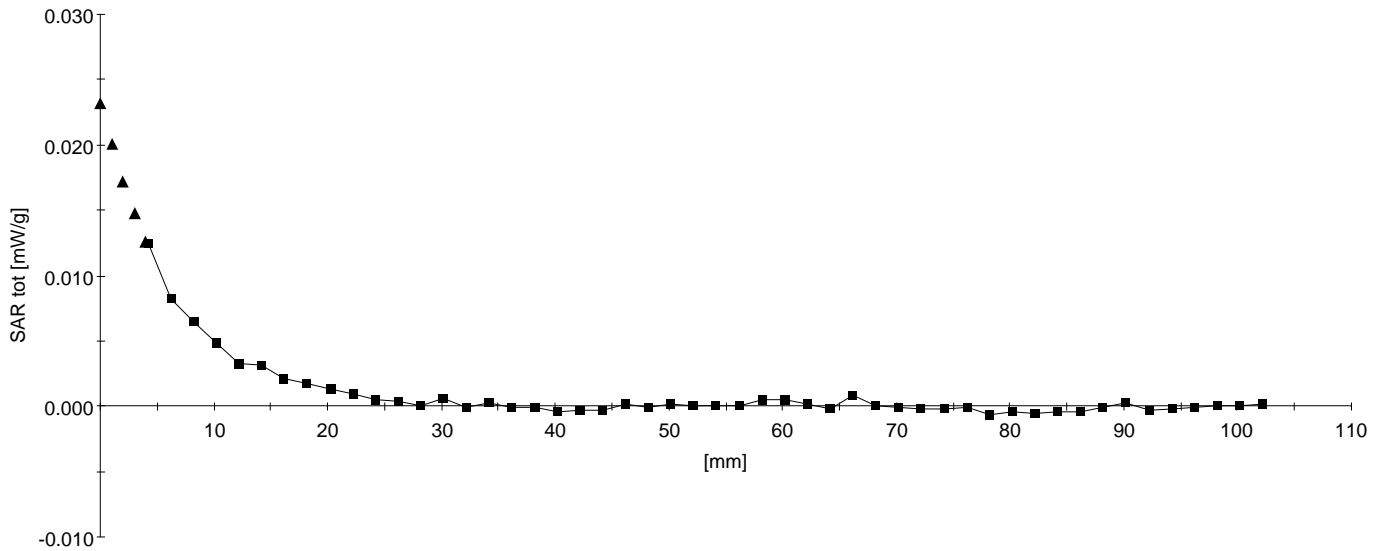
SAR:: , , ()

Penetration depth: 6.7 (6.2, 7.9) [mm];

Z-Axis: Dx = 0.0, Dy = 0.0, Dz = 2.0

Ambient Temperature (degree C): 23

Liquid Temperature (degree C): 21.1



# Cognitive\_RD232424-0H5; Flat position; Frequency: 2412 MHz Without holster)

Frequency: 2450 MHz; Crest factor: 1.0

Medium: Muscle 2450 MHz:  $\sigma = 2.04$  mho/m  $\epsilon_r = 51.9$   $\rho = 1.00$  g/cm<sup>3</sup>

SAM Phantom; Flat Section; Position: (90°,90°)

Probe: ET3DV6 - SN1578; ConvF(4.10,4.10,4.10);

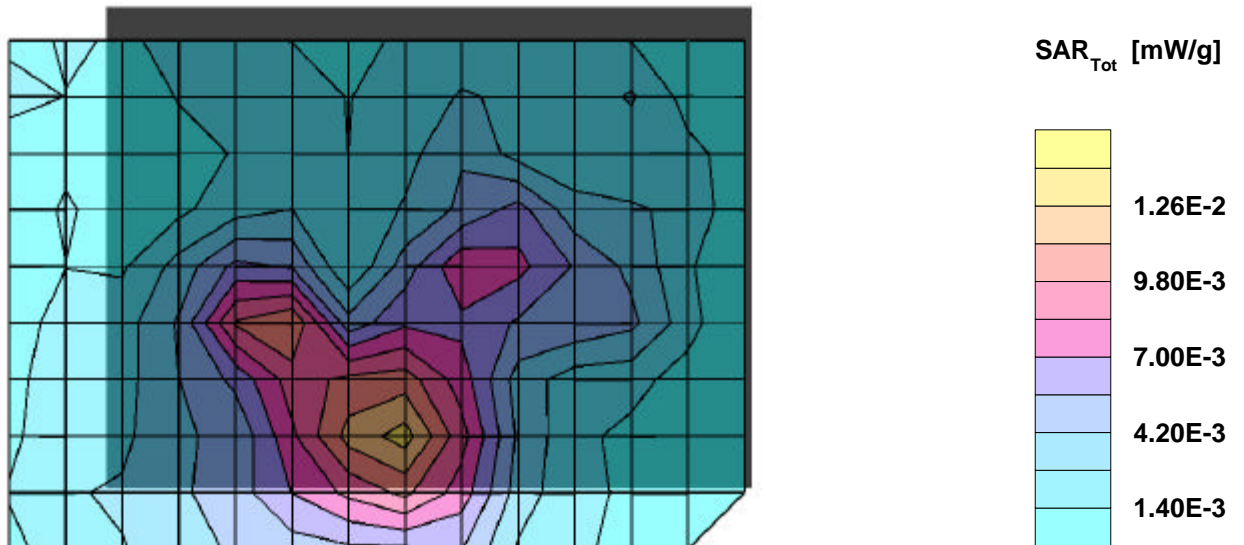
SAR:Cube 5x5x7: Peak: 0.0206 mW/g, SAR (1g): 0.0109 mW/g, SAR (10g): 0.0062 mW/g, (Worst-case extrapolation)

Penetration depth: 8.2 (6.2, 10.6) [mm]; Powerdrift: -0.14 dB

Coarse: Dx = 14.0, Dy = 14.0, Dz = 10.0

Ambient Temperature (degree C): 23

Liquid Temperature (degree C): 21.1



# Cognitive\_RD232424-0H5; Flat position; Frequency: 2412 MHz Without holster)

Frequency: 2450 MHz; Crest factor: 1.0

Medium: Muscle 2450 MHz:  $\sigma = 2.04$  mho/m  $\epsilon_r = 51.9$   $\rho = 1.00$  g/cm<sup>3</sup>

SAM Phantom; Section; Position:

Probe: ET3DV6 - SN1578; ConvF(4.10,4.10,4.10);

SAR:: , , ()

Penetration depth: 8.9 (8.7, 9.1) [mm];

Z-Axis: Dx = 0.0, Dy = 0.0, Dz = 2.0

Ambient Temperature (degree C): 23

Liquid Temperature (degree C): 21.1

