

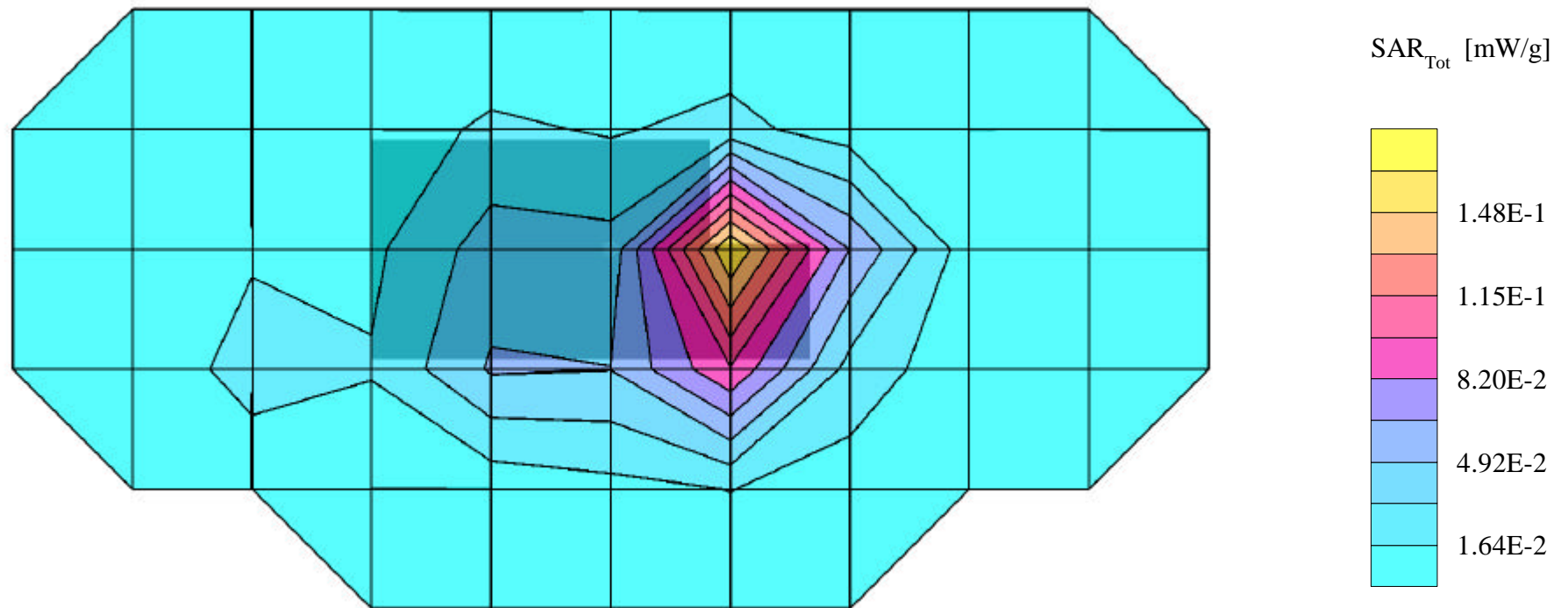
SYMBOL FCC ID: H9PCC4137 -- 2.4GHz Body SAR

Generic Twin Phantom; Flat Section; Probe:ET3DV6 - SN1560 -- Probe Cal Date 20/02/01; ConvF(4.30,4.30,4.30)
Med. Parameters 2450 MHz Muscle: $\sigma = 1.95$ mho/m $\epsilon_r = 52.7$ $\rho = 1.00$ g/cm³; Antenna Position -- Out; Crest Factor 1.0
SAR (1g): 0.210 mW/g, SAR (10g): 0.0964 mW/g

SYMBOL 1Mb DSSS radio card Model: LA4137

Low Channel [2412MHz]; Flat Phantom

Conducted Power = 12.67dBm; Spacing = 1.0cm from flat phantom to EUT antenna (antenna side of card), No BeltClip/No Holster
Test Date -- 12-05-2001



SYMBOL FCC ID: H9PCC4137 -- 2.4GHz Body SAR

Generic Twin Phantom; Flat Section; Probe: ET3DV6 - SN1560 -- Probe Cal Date 20/02/01; ConvF(4.30,4.30,4.30)

Med. Parameters 2450 MHz Muscle: $\sigma = 1.95$ mho/m $\epsilon_r = 52.7$ $\rho = 1.00$ g/cm³; Antenna Position -- Out; Crest Factor 1.0

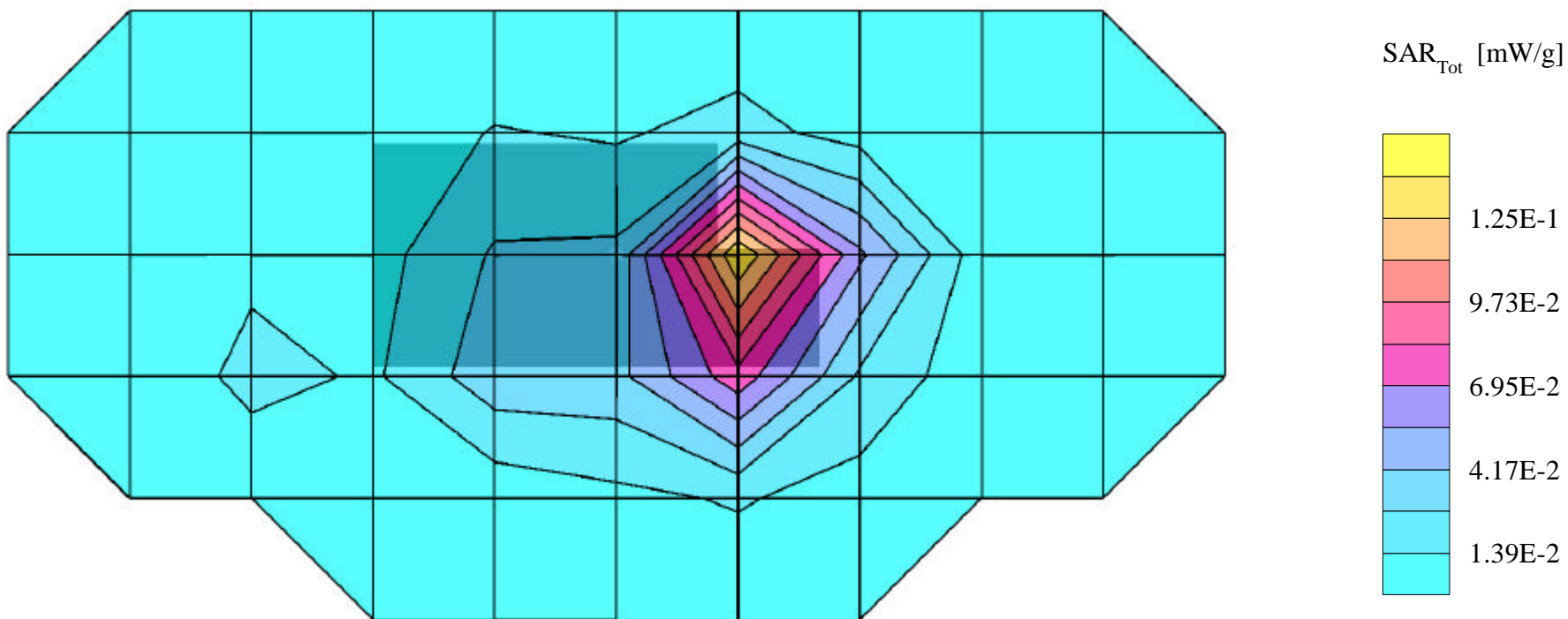
SAR (1g): 0.169 mW/g, SAR (10g): 0.0769 mW/g

SYMBOL 1Mb DSSS radio card Model: LA4137

Mid Channel [2437MHz]; Flat Phantom

Conducted Power = 13.37dBm; Spacing = 1.0cm from flat phantom to EUT antenna (antenna side of card), No BeltClip/No Holster

Test Date -- 12/05/2001



SYMBOL FCC ID: H9PCC4137 -- 2.4GHz Body SAR

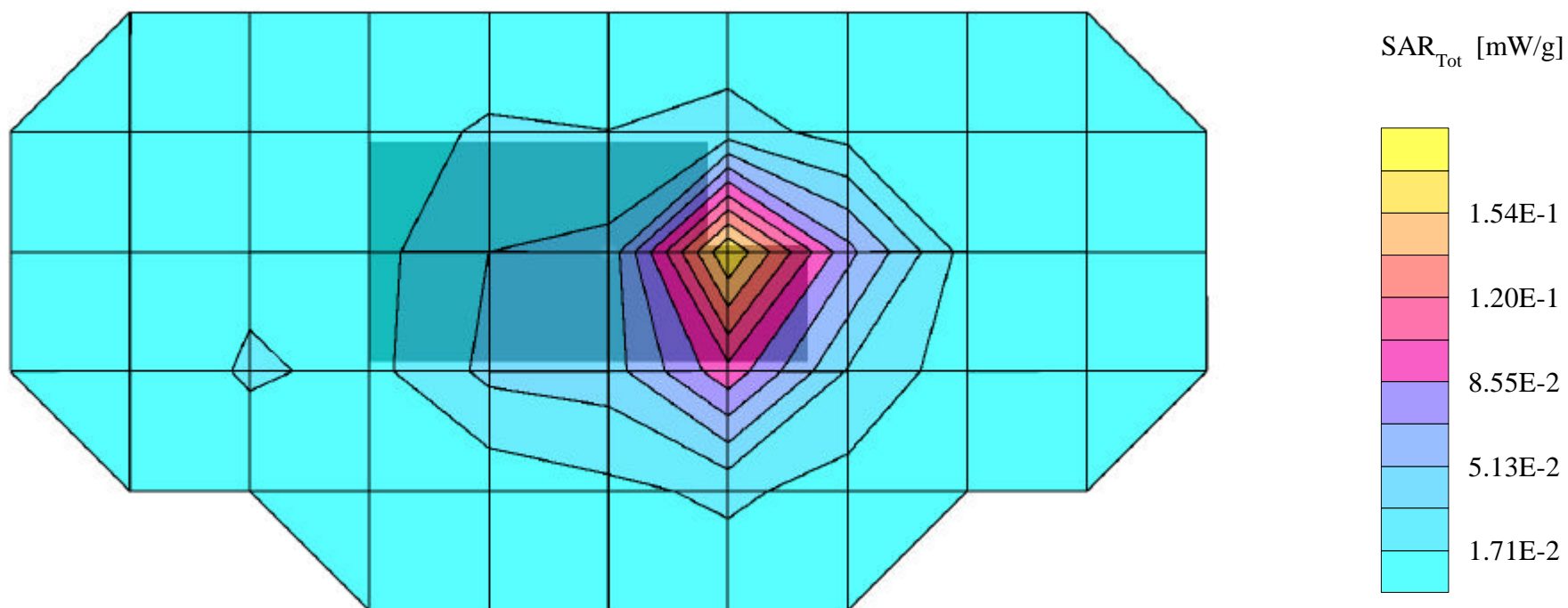
Generic Twin Phantom; Flat Section; Probe: ET3DV6 - SN1560 -- Probe Cal Date 20/02/01; ConvF(4.30,4.30,4.30)
Med. Parameters 2450 MHz Muscle: $\sigma = 1.95$ mho/m $\epsilon_r = 52.7$ $\rho = 1.00$ g/cm³; Antenna Position -- Out; Crest Factor 1.0
SAR (1g): 0.214 mW/g, SAR (10g): 0.0969 mW/g

SYMBOL 1Mb DSSS radio card Model: LA4137

High Channel [2462MHz]; Flat Phantom

Conducted Power = 13.57dBm; Spacing = 1.0cm from flat phantom to EUT antenna (antenna side of card), No BeltClip/No Holster

Test Date -- 12/05/2001



SYMBOL FCC ID: H9PCC4137 -- 2.4GHz Body SAR

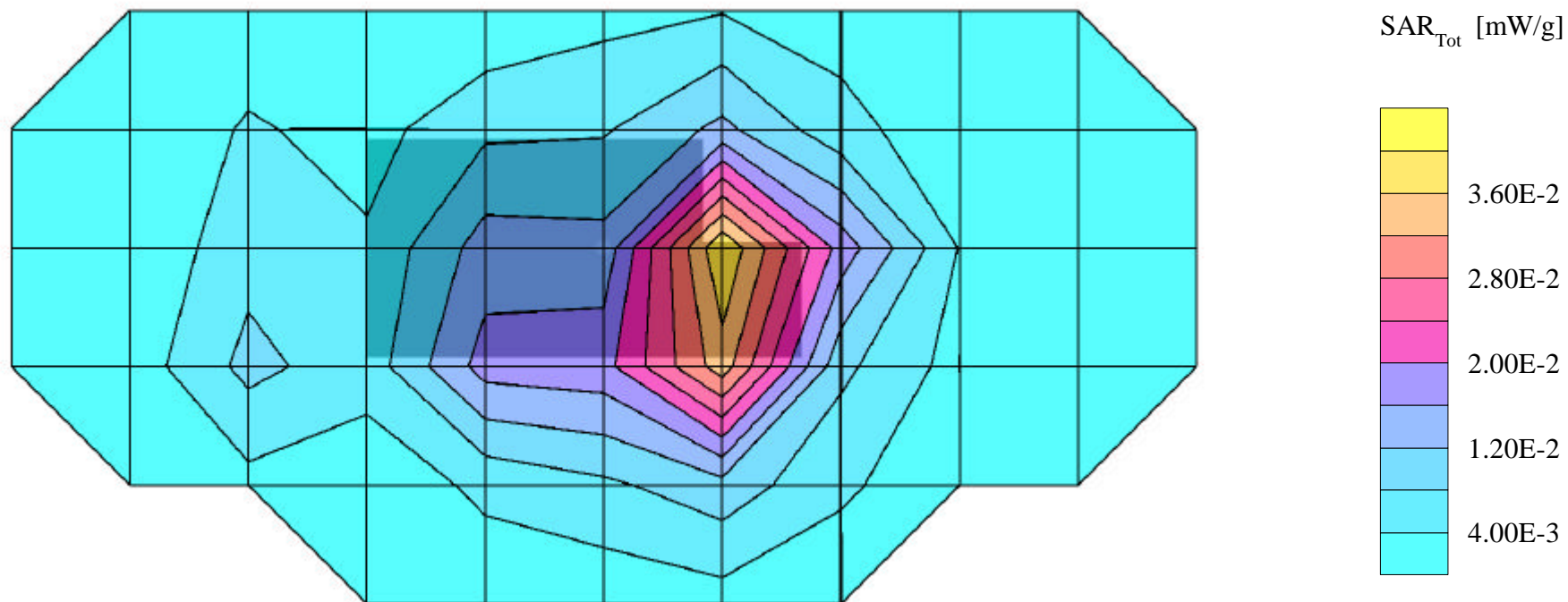
Generic Twin Phantom; Flat Section; Probe: ET3DV6 - SN1560 -- Probe Cal Date 20/02/01; ConvF(4.30,4.30,4.30)
Med. Parameters 2450 MHz Muscle: $\sigma = 1.95$ mho/m $\epsilon_r = 52.7$ $\rho = 1.00$ g/cm³; Antenna Position -- Out; Crest Factor 1.0
SAR (1g): 0.0417 mW/g, SAR (10g): 0.0213 mW/g

SYMBOL 1Mb DSSS radio card Model: LA4137

Low Channel [2412MHz]; Flat Phantom

Conducted Power = 12.67dBm; Spacing = 2.0cm from flat phantom to EUT antenna (antenna side of card), No BeltClip/No Holster

Test Date -- 12/05/2001



SYMBOL FCC ID: H9PCC4137 -- 2.4GHz Body SAR

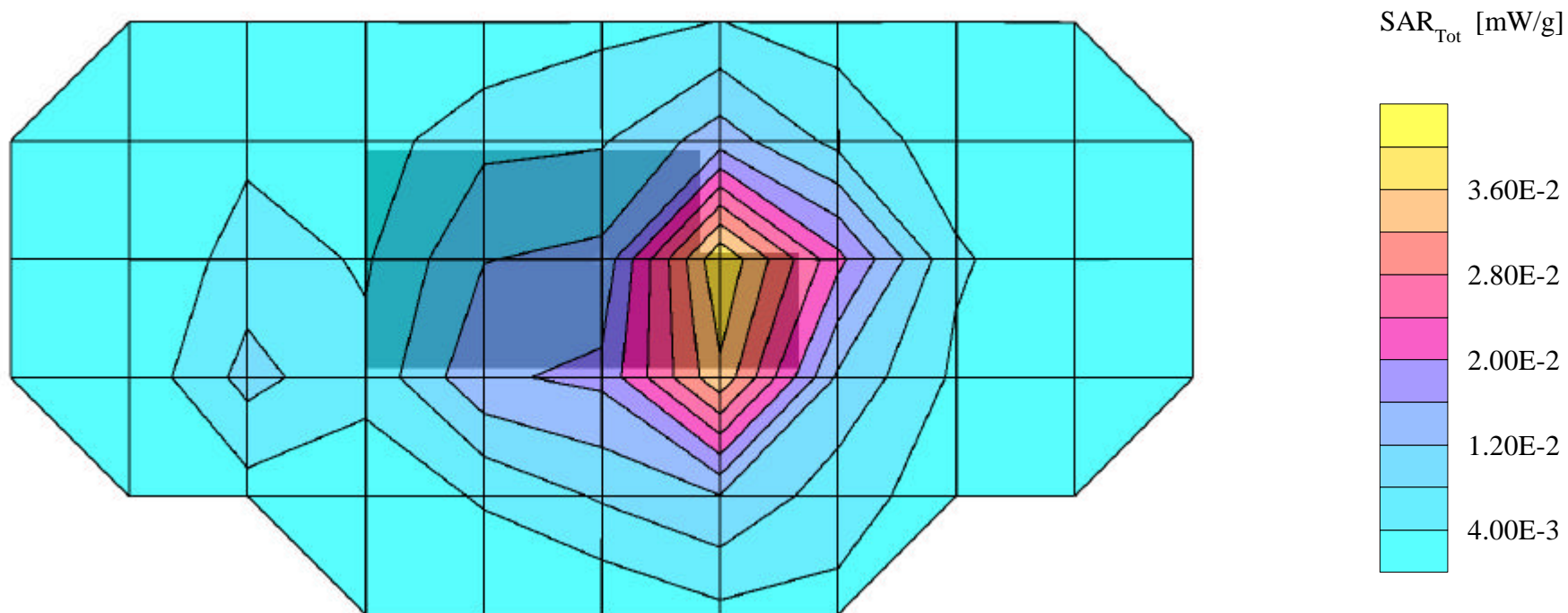
Generic Twin Phantom; Flat Section; Probe: ET3DV6 - SN1560 -- Probe Cal Date 20/02/01; ConvF(4.30,4.30,4.30)
Med. Parameters 2450 MHz Muscle: $\sigma = 1.95$ mho/m $\epsilon_r = 52.7$ $\rho = 1.00$ g/cm³; Antenna Position -- Out; Crest Factor 1.0
SAR (1g): 0.0395 mW/g, SAR (10g): 0.0201 mW/g

SYMBOL 1Mb DSSS radio card Model: LA4137

Mid Channel [2437MHz]; Flat Phantom

Conducted Power = 13.37dBm; Spacing = 2.0cm from flat phantom to EUT antenna (antenna side of card), No BeltClip/No Holster

Test Date -- 12/05/2001



SYMBOL FCC ID: H9PCC4137 -- 2.4GHz Body SAR

Generic Twin Phantom; Flat Section; Probe: ET3DV6 - SN1560 -- Probe Cal Date 20/02/01; ConvF(4.30,4.30,4.30)
Med. Parameters 2450 MHz Muscle: $\sigma = 1.95$ mho/m $\epsilon_r = 52.7$ $\rho = 1.00$ g/cm³; Antenna Position -- Out; Crest Factor 1.0
SAR (1g): 0.0504 mW/g, SAR (10g): 0.0263 mW/g

SYMBOL 1Mb DSSS radio card Model: LA4137

High Channel [2462MHz]; Flat Phantom

Conducted Power = 13.57dBm; Spacing = 2.0cm from flat phantom to EUT antenna (antenna side of card), No BeltClip/No Holster

Test Date -- 12/05/2001

