

SYMBOL FCC ID: H9PLA4137 -- 2.4GHz Body SAR

Generic Twin Phantom; Flat Section; Probe: ET3DV6 - SN1560 -- Probe Cal Date 20/02/01

Med. Parameters 2450 MHz Muscle: $\sigma = 2.20$ mho/m $\epsilon_r = 52.0$ $\rho = 1.00$ g/cm³; Antenna Position -- Out; Crest Factor 1.0

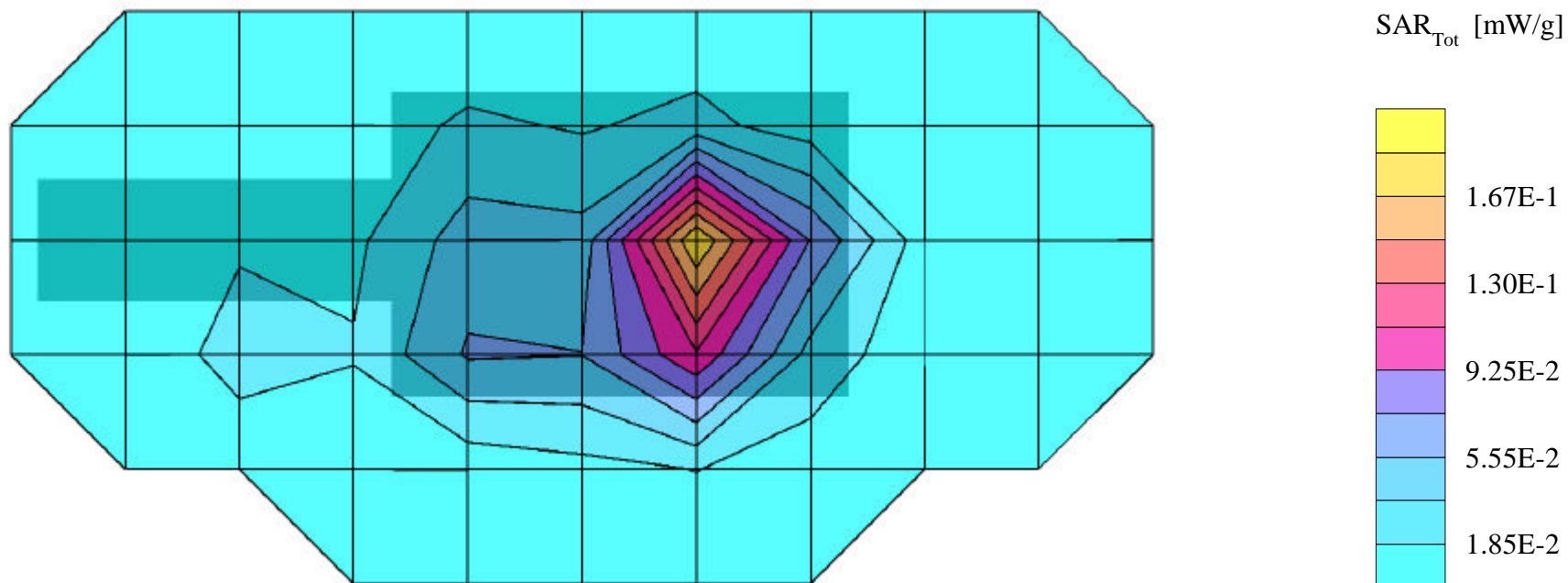
SAR (1g): 0.237 mW/g, SAR (10g): 0.109 mW/g

SYMBOL 1Mb DSSS radio card Model: LA4137

Low Channel [2412MHz]; Flat Phantom

EIRP Power = xxxdBm [xxxmW]; Spacing = 1.0cm from flat phantom to EUT antenna (antenna side of card), No BeltClip/No Holster

Test Date -- 12/05/2001



SYMBOL FCC ID: H9PLA4137 -- 2.4GHz Body SAR

Generic Twin Phantom; Flat Section; Probe: ET3DV6 - SN1560 -- Probe Cal Date 20/02/01

Med. Parameters 2450 MHz Muscle: $\sigma = 2.20$ mho/m $\epsilon_r = 52.0$ $\rho = 1.00$ g/cm³; Antenna Position -- Out; Crest Factor 1.0

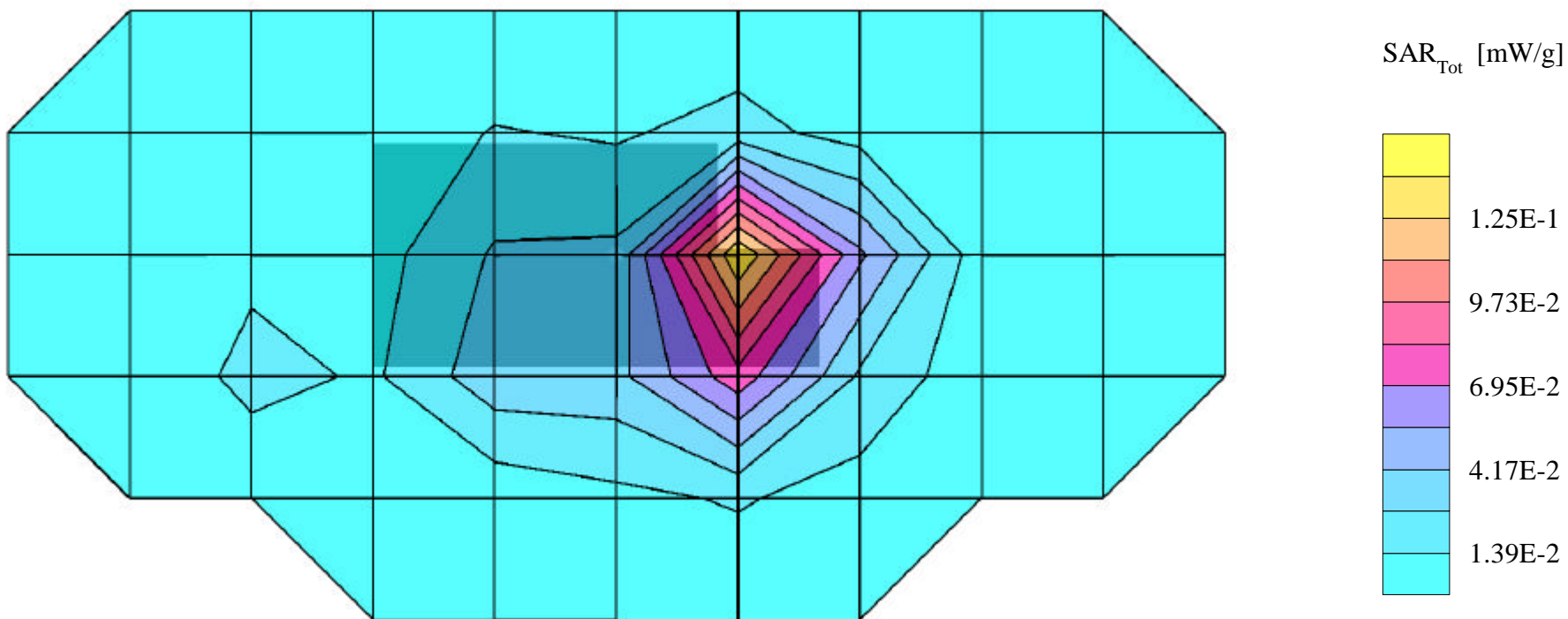
SAR (1g): 0.191 mW/g, SAR (10g): 0.0868 mW/g

SYMBOL 1Mb DSSS radio card Model: LA4137

Mid Channel [2437MHz]; Flat Phantom

EIRP Power = xxxdBm [xxxmW]; Spacing = 1.0cm from flat phantom to EUT antenna (antenna side of card), No BeltClip/No Holster

Test Date -- 12/05/2001



SYMBOL FCC ID: H9PLA4137 -- 2.4GHz Body SAR

Generic Twin Phantom; Flat Section; Probe: ET3DV6 - SN1560 -- Probe Cal Date 20/02/01

Med. Parameters 2450 MHz Muscle: $\sigma = 2.20$ mho/m $\epsilon_r = 52.0$ $\rho = 1.00$ g/cm³; Antenna Position -- Out; Crest Factor 1.0

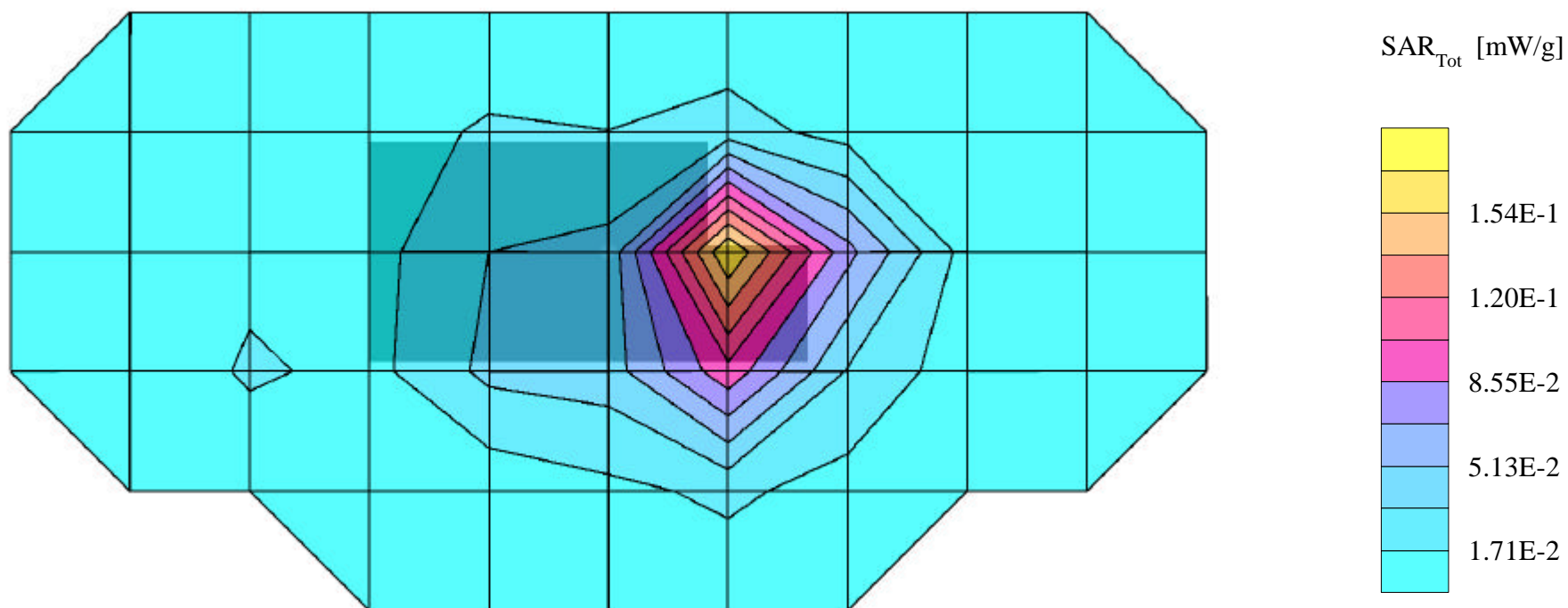
SAR (1g): 0.242 mW/g, SAR (10g): 0.109 mW/g

SYMBOL 1Mb DSSS radio card Model: LA4137

High Channel [2462MHz]; Flat Phantom

EIRP Power = xxxdBm [xxxmW]; Spacing = 1.0cm from flat phantom to EUT antenna (antenna side of card), No BeltClip/No Holster

Test Date -- 12/05/2001



SYMBOL FCC ID: H9PLA4137 -- 2.4GHz Body SAR

Generic Twin Phantom; Flat Section; Probe: ET3DV6 - SN1560 -- Probe Cal Date 20/02/01

Med. Parameters 2450 MHz Muscle: $\sigma = 2.20$ mho/m $\epsilon_r = 52.0$ $\rho = 1.00$ g/cm³; Antenna Position -- Out; Crest Factor 1.0

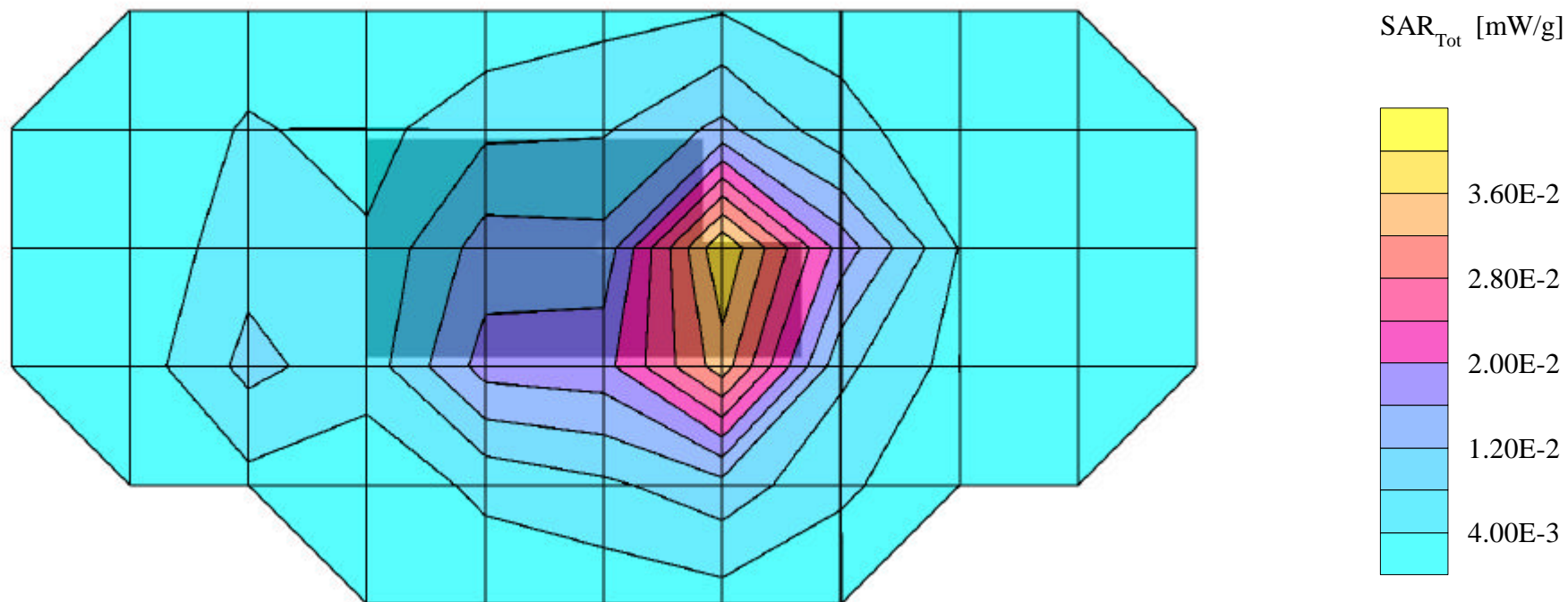
SAR (1g): 0.0470 mW/g, SAR (10g): 0.0241 mW/g

SYMBOL 1Mb DSSS radio card Model: LA4137

Low Channel [2412MHz]; Flat Phantom

EIRP Power = xxxdBm [xxxmW]; Spacing = 2.0cm from flat phantom to EUT antenna (antenna side of card), No BeltClip/No Holster

Test Date -- 12/05/2001



SYMBOL FCC ID: H9PLA4137 -- 2.4GHz Body SAR

Generic Twin Phantom; Flat Section; Probe: ET3DV6 - SN1560 -- Probe Cal Date 20/02/01

Med. Parameters 2450 MHz Muscle: $\sigma = 2.20$ mho/m $\epsilon_r = 52.0$ $\rho = 1.00$ g/cm³; Antenna Position -- Out; Crest Factor 1.0

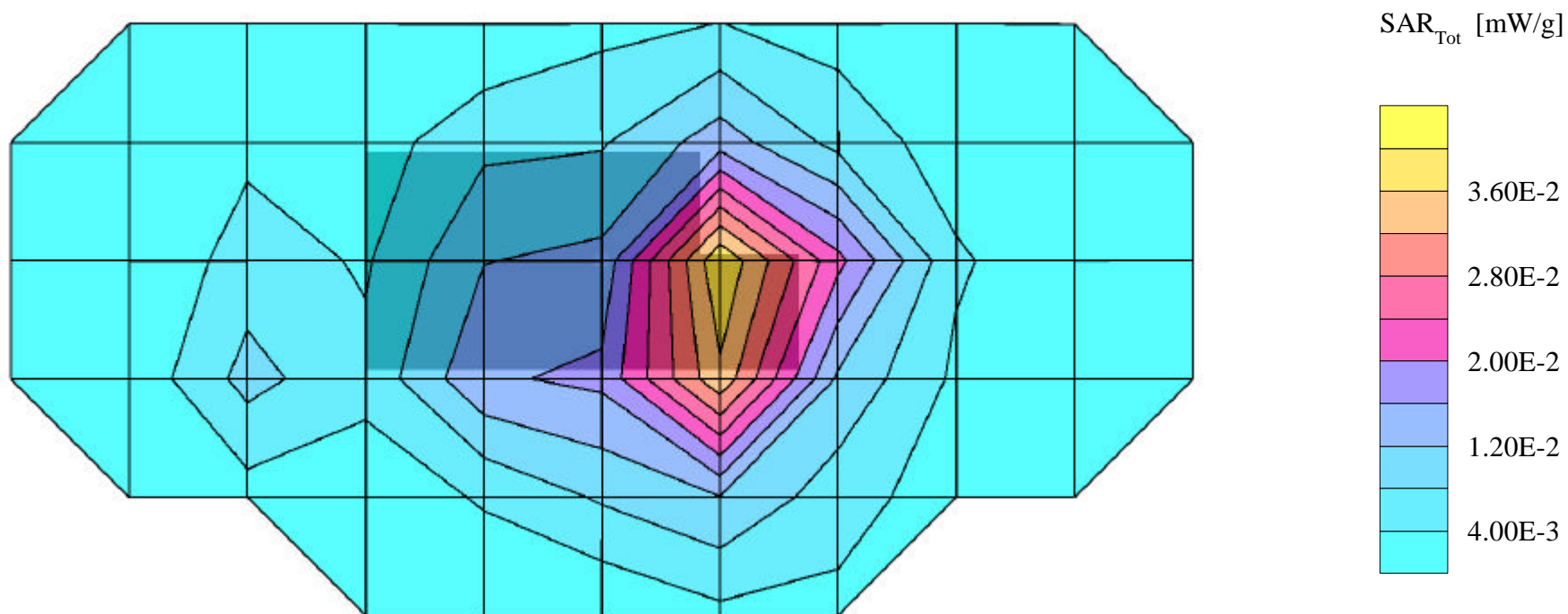
SAR (1g): 0.0446 mW/g, SAR (10g): 0.0227 mW/g

SYMBOL 1Mb DSSS radio card Model: LA4137

Mid Channel [2437MHz]; Flat Phantom

EIRP Power = xxxdBm [xxxmW]; Spacing = 2.0cm from flat phantom to EUT antenna (antenna side of card), No BeltClip/No Holster

Test Date -- 12/05/2001



SYMBOL FCC ID: H9PLA4137 -- 2.4GHz Body SAR

Generic Twin Phantom; Flat Section; Probe: ET3DV6 - SN1560 -- Probe Cal Date 20/02/01

Med. Parameters 2450 MHz Muscle: $\sigma = 2.20$ mho/m $\epsilon_r = 52.0$ $\rho = 1.00$ g/cm³; Antenna Position -- Out; Crest Factor 1.0

SAR (1g): 0.0568 mW/g, SAR (10g): 0.0296 mW/g

SYMBOL 1Mb DSSS radio card Model: LA4137

High Channel [2462MHz]; Flat Phantom

EIRP Power = xxxdBm [xxxmW]; Spacing = 2.0cm from flat phantom to EUT antenna (antenna side of card), No BeltClip/No Holster

Test Date -- 12/05/2001

