

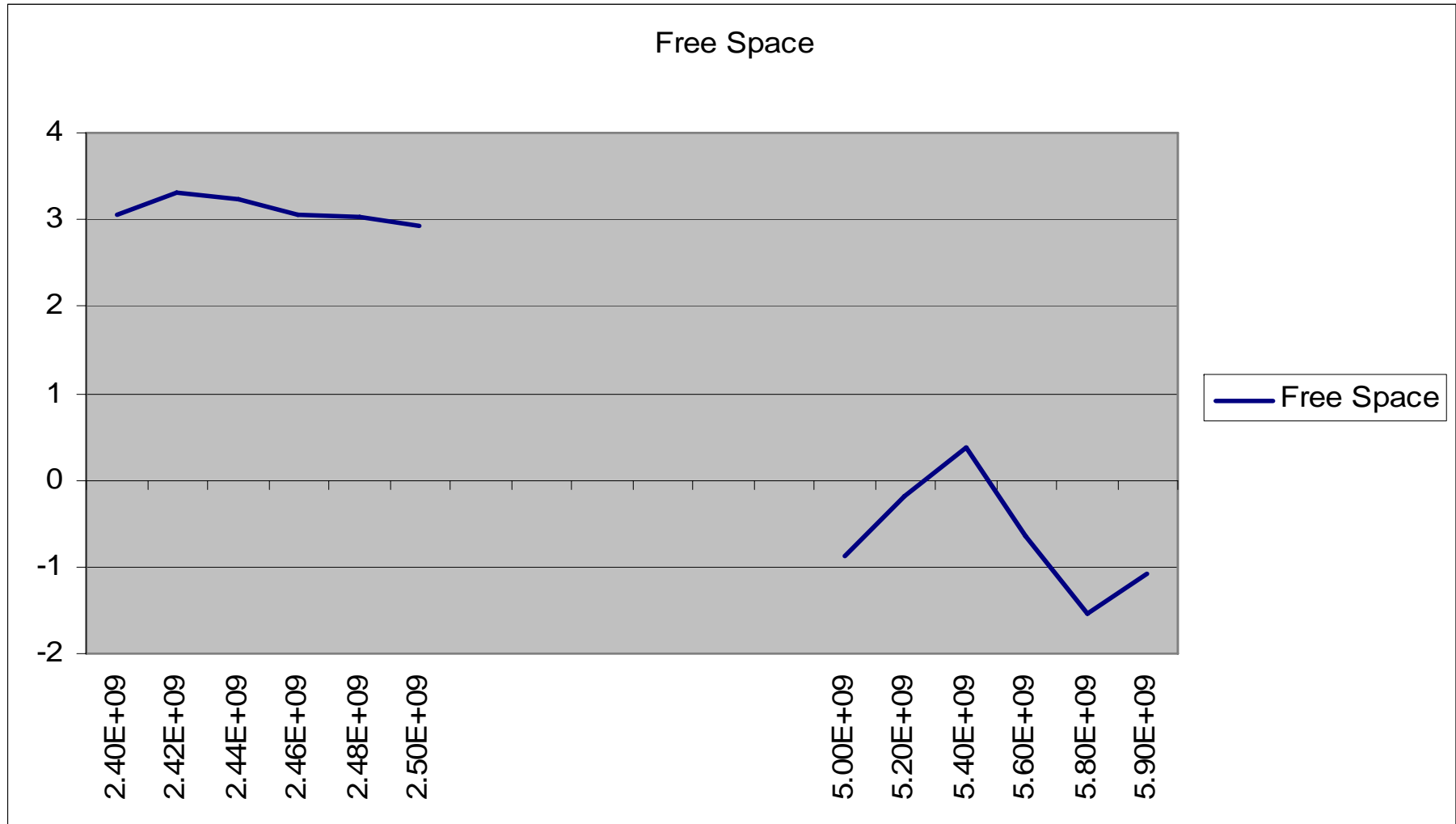
Symbol CA5090 Antenna Laird part CAS96209AB



CONFIDENTIAL and PROPRIETARY

The information contained in this document is Confidential and Proprietary to **Laird Technologies** and is subject to Non-Disclosure Agreements. It may not be reproduced without express written permission of **Laird Technologies**. P.O. Box 82846 3425 North 44th Street Lincoln, Nebraska 68501 USA 402/325-3131

Peak Gain



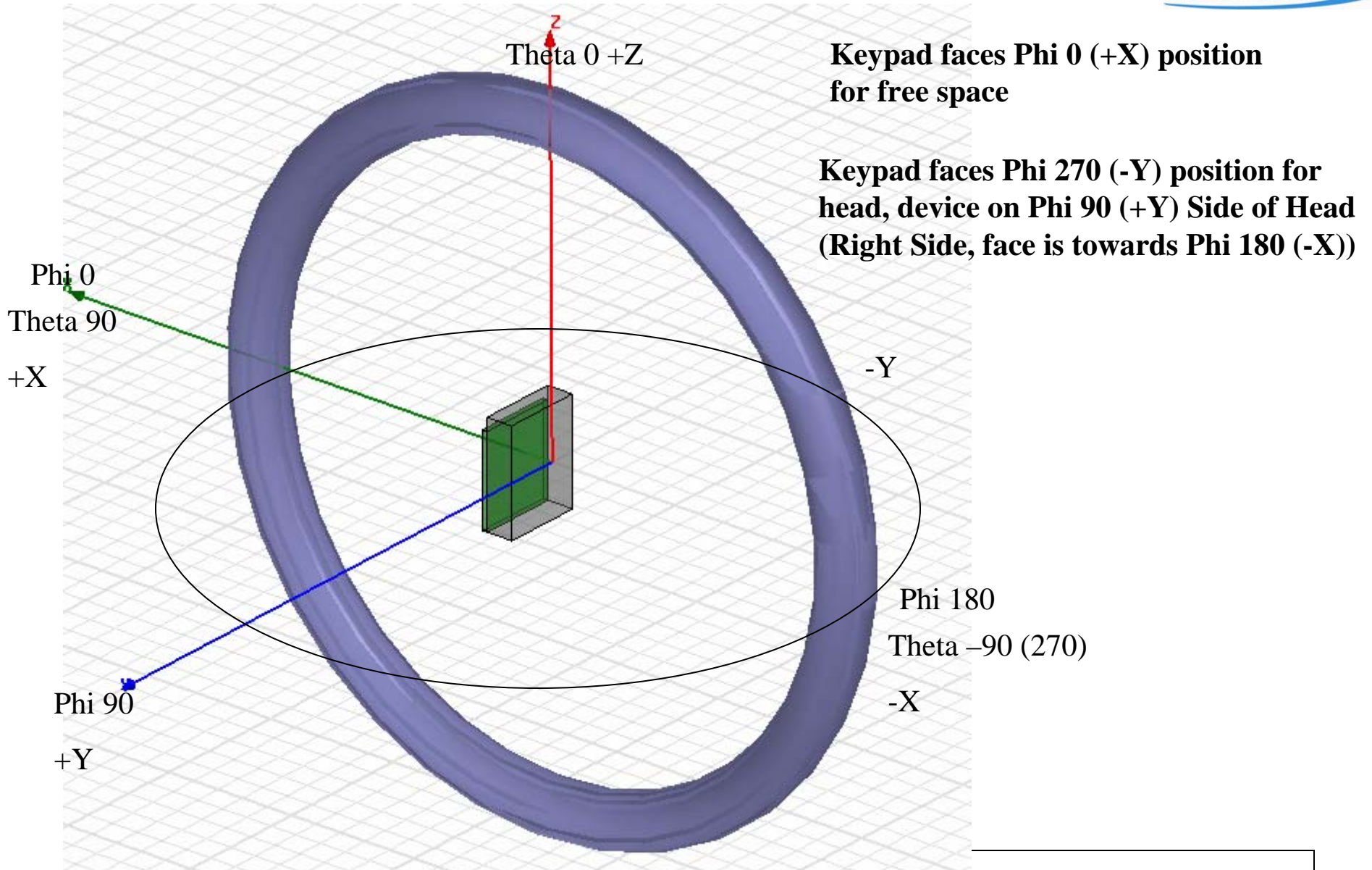
2.4 GHz peak gain = 3.3dBi

5GHz peak gain = 0.4 dBi

CONFIDENTIAL and PROPRIETARY

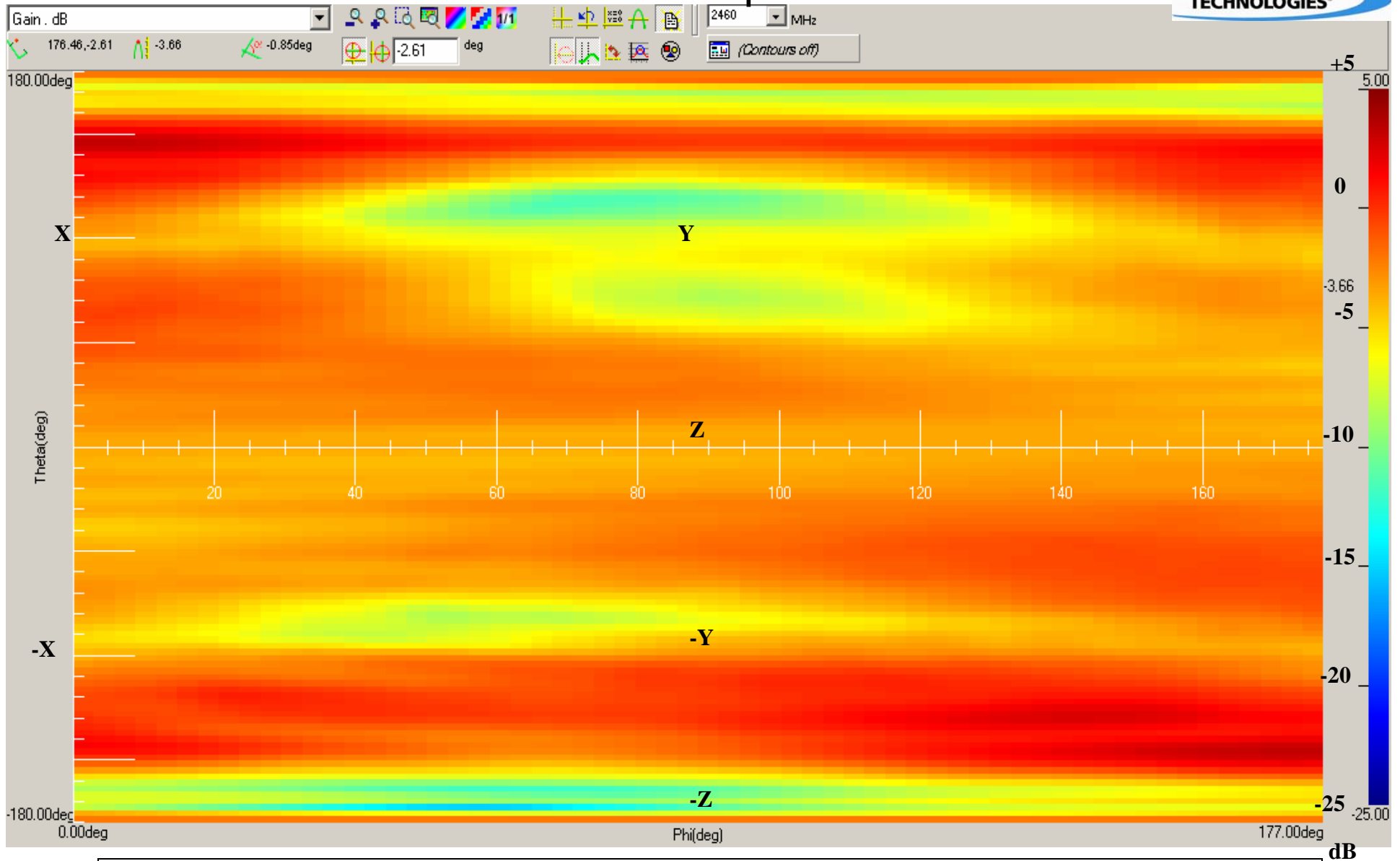
The information contained in this document is Confidential and Proprietary to Laird Technologies and is subject to Non-Disclosure Agreements. It may not be reproduced without express written permission of Laird Technologies. P.O. Box 82846 3425 North 44th Street Lincoln, Nebraska 68501 USA 402/325-3131

Testing Reference Page



The information contained in this document is Confidential and Proprietary to **Laird Technologies** and is subject to Non-Disclosure Agreements. It may not be reproduced without express written permission of **Laird Technologies**. P.O. Box 82846 3425 North 44th Street Lincoln, Nebraska 68501 USA 402/325-3131

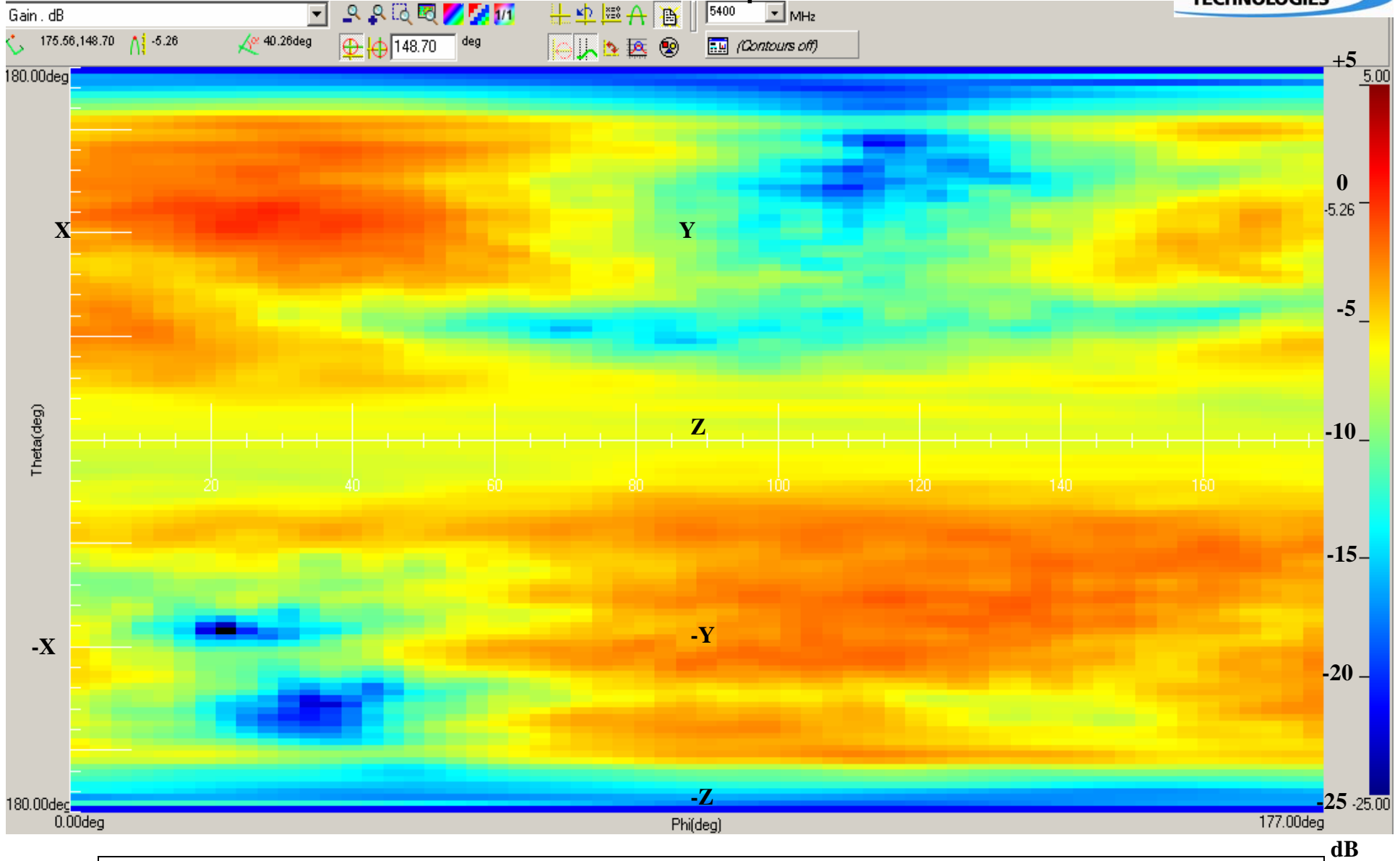
Radiation Pattern 2460 MHz Free space:



CONFIDENTIAL and PROPRIETARY

The information contained in this document is Confidential and Proprietary to Laird Technologies and is subject to Non-Disclosure Agreements. It may not be reproduced without express written permission of Laird Technologies. P.O. Box 82846 3425 North 44th Street Lincoln, Nebraska 68501 USA 402/325-3131

Radiation Pattern 5400 MHz Free space:



CONFIDENTIAL and PROPRIETARY

The information contained in this document is Confidential and Proprietary to Laird Technologies and is subject to Non-Disclosure Agreements. It may not be reproduced without express written permission of Laird Technologies. P.O. Box 82846 3425 North 44th Street Lincoln, Nebraska 68501 USA 402/325-3131