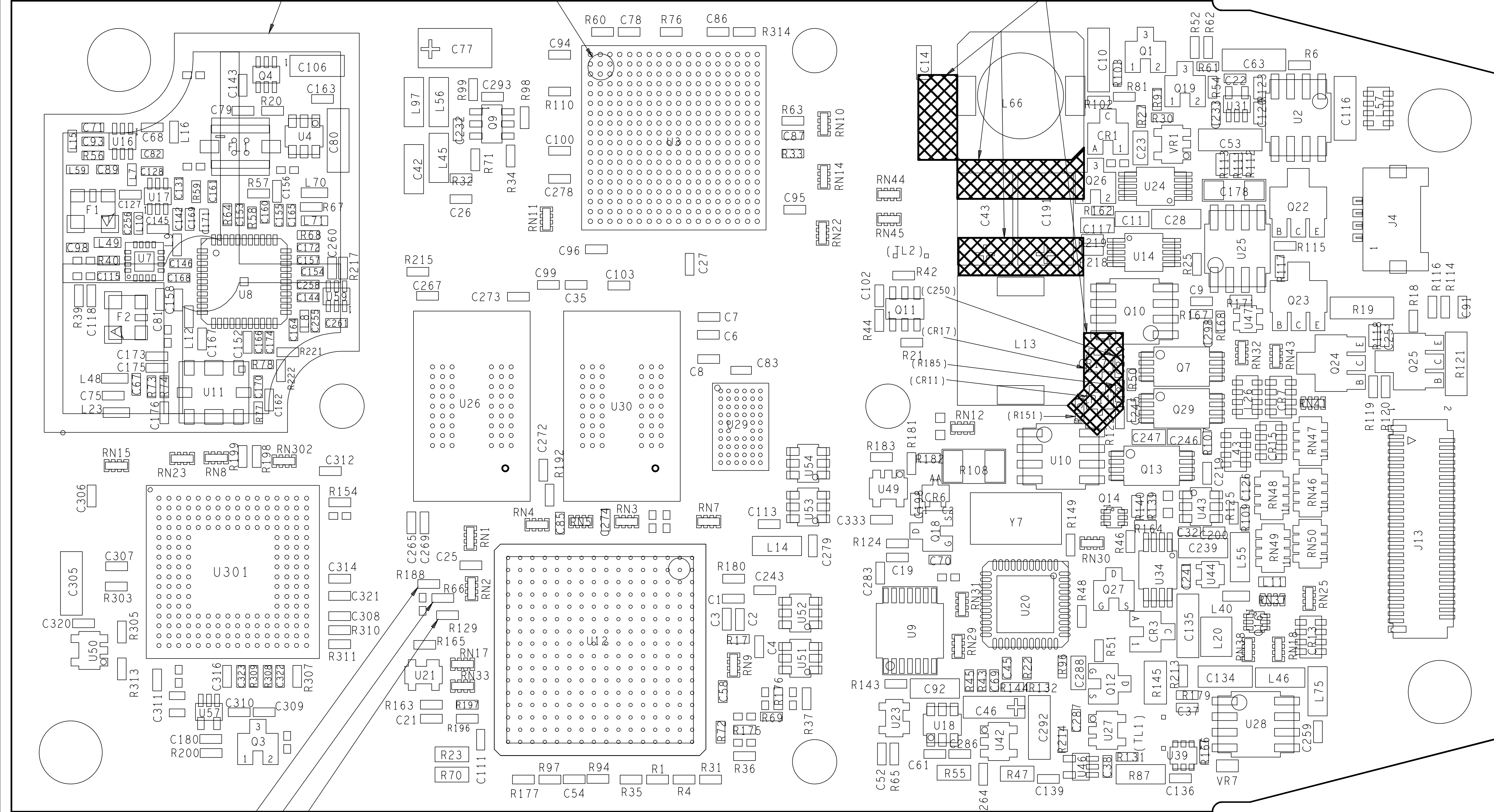


REV	ZONE	NO	DESCRIPTION	E.C.	BY	APVD	DATE
2			RELEASE PER PPD 77251		MJ	RK	9/29/03



PRIMARY SIDE

-01, 02 & -03  
ASSEMBLY

NOTES

1. LABEL BOARDS WITH APPROPRIATE PARTS LIST DASH NUMBER AND REVISION USING ITEM 2000. LABEL MUST BE PLACED IN AN AREA THAT WILL NOT AFFECT FUNCTIONALITY AND FIT OF THE BOARD. BOARDS SUPPLIED BY A THIRD PARTY MAY BE LABELED OR STAMPED AT THE DISCRETION OF THE MANUFACTURER. STAMPED MARKING MUST BE .06"-.125" HIGH USING A NON-CONDUCTIVE CONTRASTING EPOXY INK.
2. INDICATES LOCATION OF PIN NUMBER 1.
3. APPLY EPOXY, ITEM 10, AS FOLLOWS:  
 A) AS INDICATED AROUND L13 AND L66.  
 B) AS INDICATED AROUND L18.  
 AS INDICATED AROUND AND OVER L32.

SEE ASSOCIATED P/L 24-64436-01 AND SUBSEQUENT P/L'S.

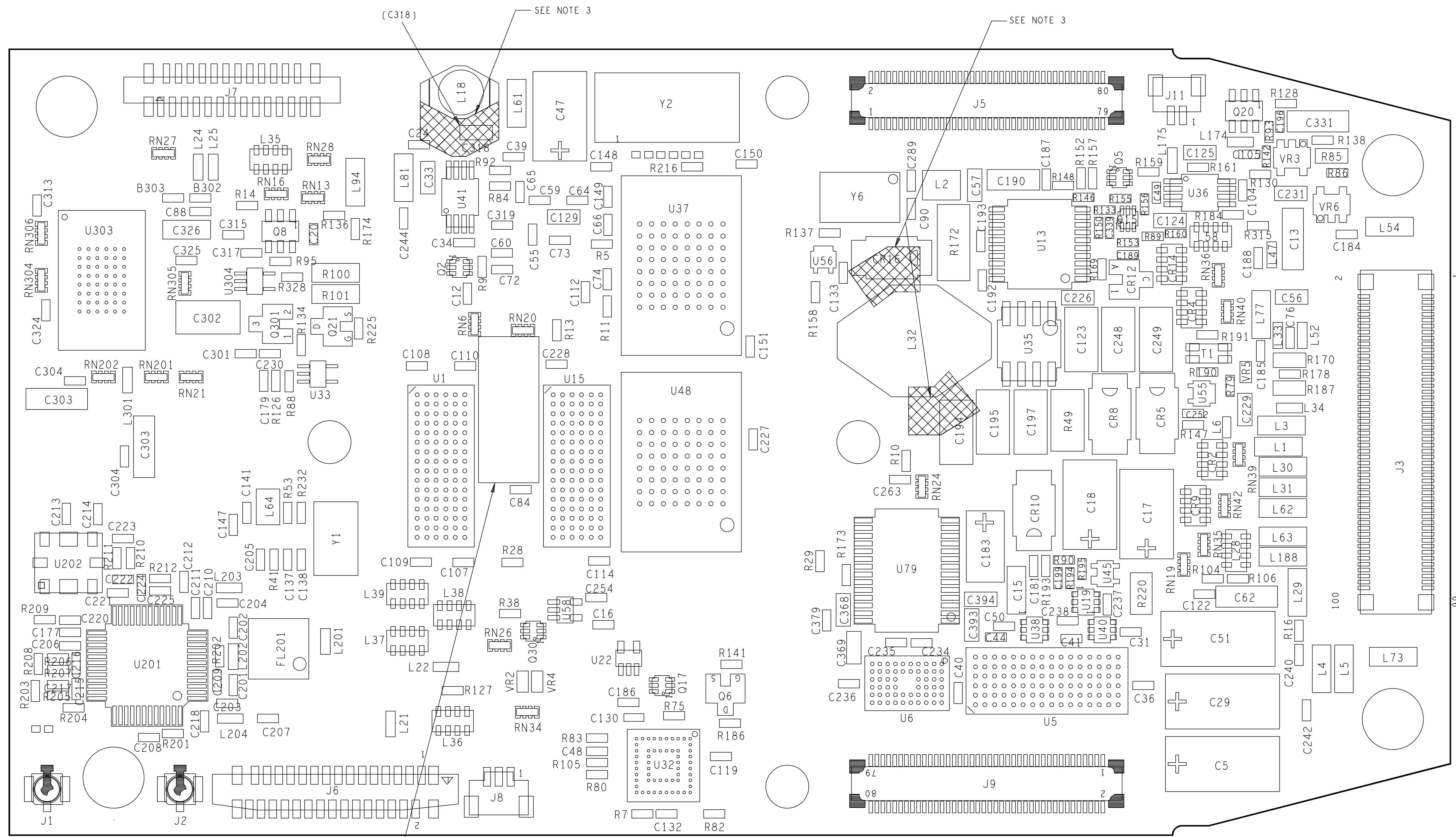
ITEM	QTY	PART NO.	DESCRIPTION	REMARKS/REF. SYMBOL
PARTS LIST				
		APPROVALS	DATE	SYMBOL TECHNOLOGIES INC.
		DRAWN	27JAN03	Bohemia, New York
		CHECKED		PCB ASSEMBLY:
		ENGINEER		GEMINI CPU
		MFG. ENG.		SIZE
		PRODUCT		DWG. NO.
		QUALITY		24-64436-XX
		TEST ENG.		REV. 2
		FINISH:		SCALE: NONE
		TEST ENG.		SHEET 1 OF 4

R188  
-02 ASSY ONLY

R66  
-01 & -03 ASSY ONLY

R129  
-03 ASSY ONLY

REV	ZONE	DESCRIPTION	E.C.	BY	APVD	DATE
-		SEE SHEET 1				



(C318) SEE NOTE 3

SEE NOTE 3

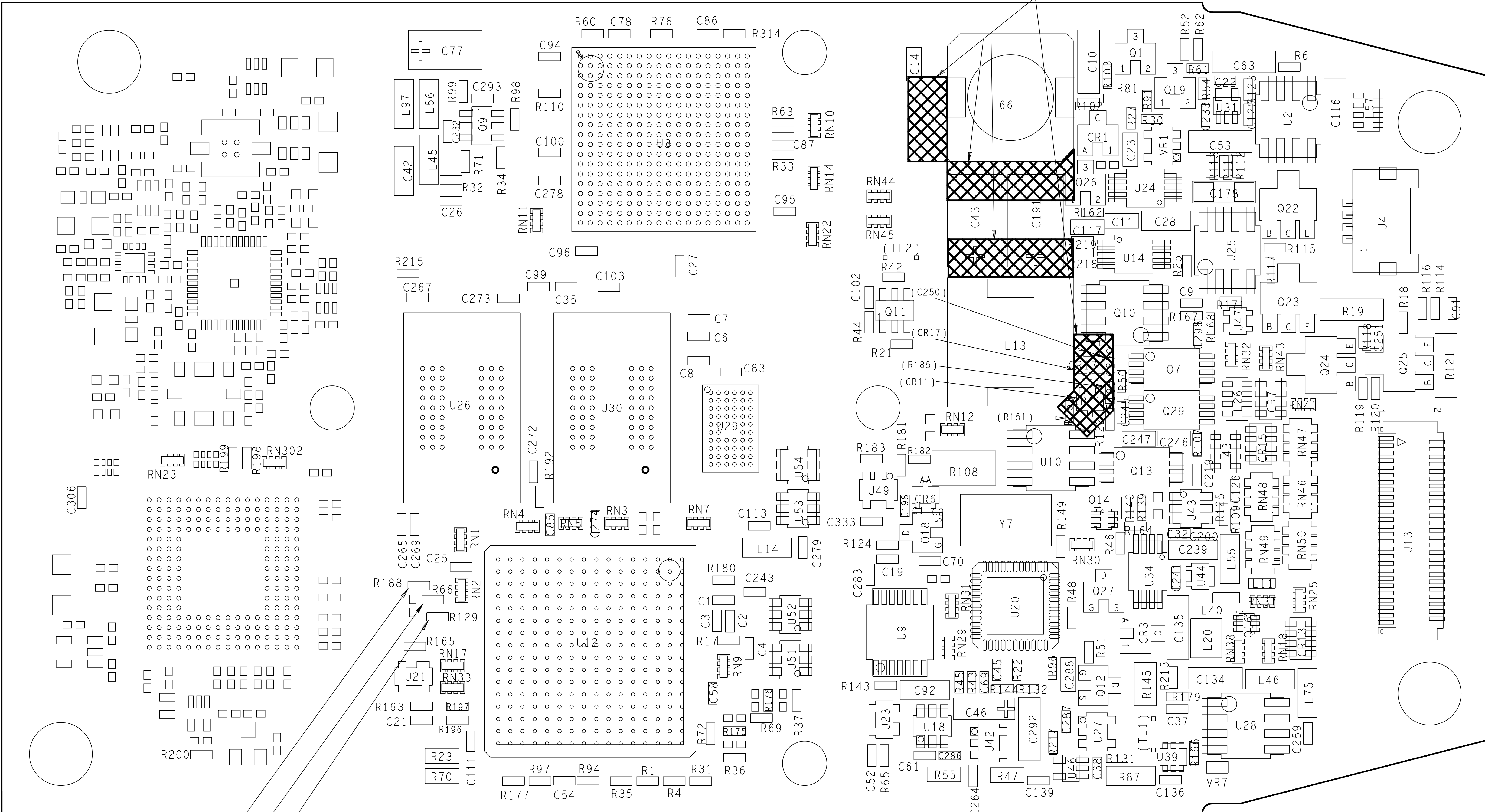
SEE NOTE 1 (LABEL)

SECONDARY SIDE

-01, -02 & -03  
ASSEMBLY

SIZE	DWG. NO.	REV.
D	24-64436-XX	2
SCALE	ONE	SHEET 2 OF 4

REV	ZONE	DESCRIPTION	E.C.	BY	APVD	DATE
-		SEE SHEET 1				



SEE NOTE 2

SEE NOTE 3

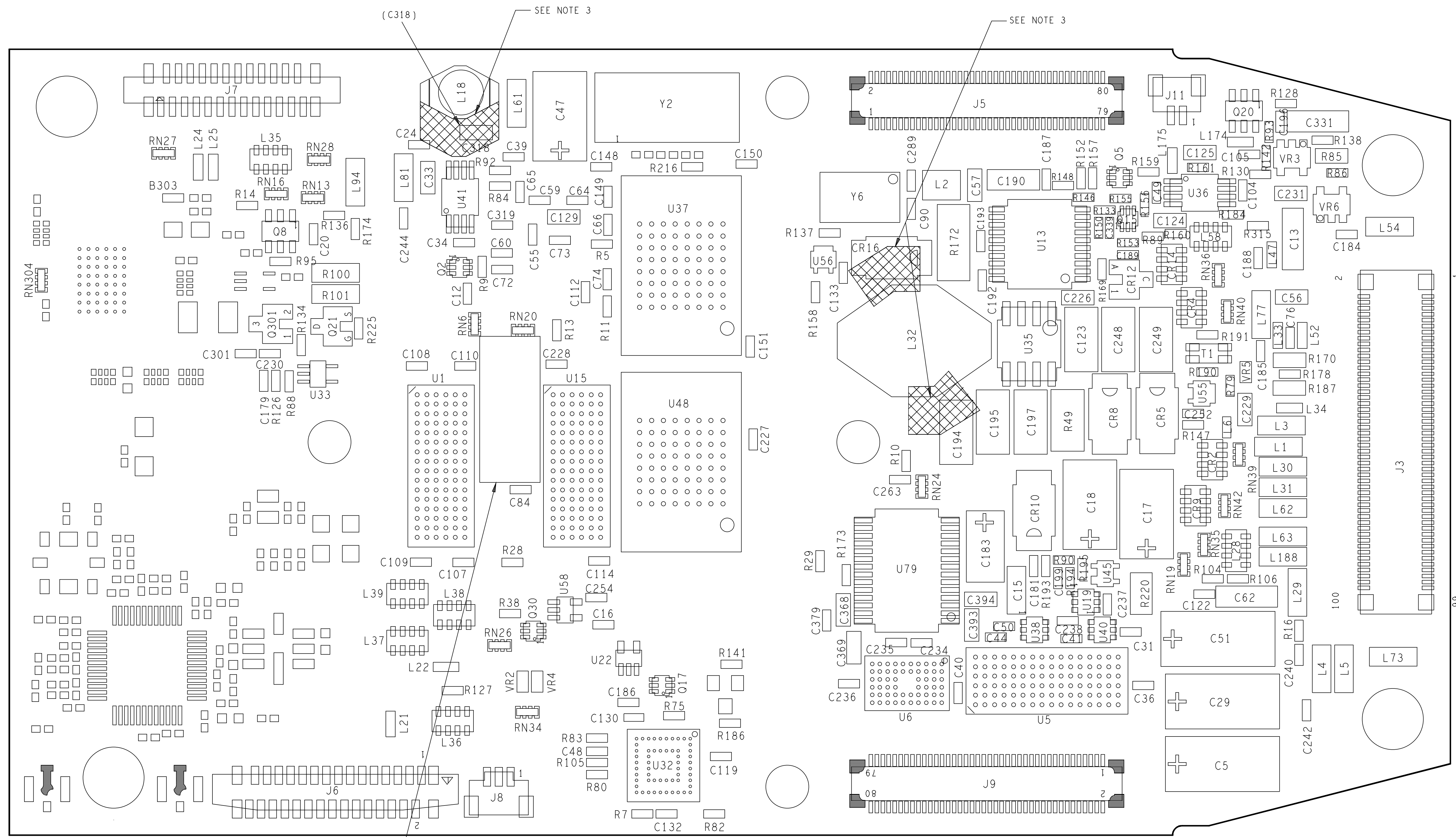
PRIMARY SIDE

- 04 & -07 ASSY ONLY
- 05 & -06 ASSY ONLY
- 06 ASSY ONLY

-04, 05, -06 & -07  
ASSEMBLY

SIZE	DWG. NO.	REV.
D	24-64436-XX	2
SCALE	NONE	SHEET 3 OF 4

REV	ZONE	DESCRIPTION	E.C.	BY	APVD	DATE
-		SEE SHEET 1				



(C318) SEE NOTE 3

SEE NOTE 3

SEE NOTE 1 (LABEL)

SECONDARY SIDE

-04, -05, -06 & -07  
ASSEMBLY

SIZE	DWG. NO.	REV.
D	24-64436-XX	2
SCALE	NONE	SHEET 4 OF 4