

(A) **Warranty Symbol** Technologies hereafter "Seller" hardware Products are warranted against defects in workmanship and materials for a period of twelve (12) months from the date of shipment, unless otherwise provided by Seller in writing, provided the Product remains unmodified and is operated under normal and proper conditions. Warranty provisions and durations on software, manufactured products, and systems, Product modified or assigned to meet specific customer specifications ("Custom Products"), remanufactured products, and accessories (including optional accessories) shall be as provided in the applicable Product specification in effect at the time of purchase or in the reconditioning or upgraded products". (B) **Spare Parts** Spare parts (i.e. parts, components, or subassemblies sold by Seller for use in the service and maintenance of Products) are warranted against defects in workmanship and materials for a period of thirty (30) days from the date of shipment; spare parts may be new or require from retained units under the conditions set forth in subsection D below. (C) **Repair of Symbol-branded hardware** For repairs on Symbol-branded hardware Products under this Agreement, including repairs covered by warranty, the repair services are warranted against defects in workmanship and materials on the repaired component of the Product for a period of thirty (30) days from the shipment date of the repaired Product, or until the end of the original warranty period, whichever is longer. (D) **Product Service** Products may be serviced or manufactured with parts, components, or subassemblies that originate from retained products and that have been tested as meeting applicable specifications for equivalent new material and Products; the sole obligation of Seller for defective hardware Products is limited to repair or replacement at Seller's option on a "return to service depot" basis with prior Seller authorization. Customer is responsible for shipment to the Seller and assumes all costs and risks associated with the transportation. Return shipment to the Customer will be at Seller's expense. Customer shall be responsible for certain shipment charges for product returned where charge will be no defect ("No Defect Found"), or for product returned that Seller determines is not eligible for warranty repair. No charge will be made to buyer for replacement parts for warranty repairs; Seller is not responsible for any damage to or loss of any software programs, data or removable data storage media, or the restoration or reinstatement of any software programs or data other than the software, if any, installed by Seller during manufacture of the Product. (E) **Original Warranty Period** Except for the warranty applying solely to the repaired component arising from a repair service as provided in section C above, the aforementioned provisions do not extend the original warranty period of any Product that had either been repaired or replaced by Seller.

(F) **Warranty Provisions** The above warranty provisions shall not apply to any Product if which has been repaired, tampered with, altered or modified, except by Seller's authorized service personnel; if, in which the defect or damage to the Product result from normal wear and tear, misuse, negligence, improper storage, water or other liquids, battery leakage, use of parts or accessories not approved or supplied by Seller, or failure to perform operator handling and scheduled maintenance instructions supplied by Seller, if all which has been subjected to unusual physical or electrical stress, abuse, or forces or exposure beyond normal use within the specified operational Symbol, or failure to apply the Product. (G) **Limitation of Remedies** Seller's obligations under this warranty are limited to the repair, replacement, or reimbursement of the Product. (H) **Limitation of Consequential Damages** For consumer Products, in such states or countries, for such products, some exclusions or limitations of this limited warranty may not apply. The stated express warranties are in lieu of or in addition to the far market value of said service, except in instances of injury to persons or property. Seller's liability for indirect or consequential damages arising out of or in connection with the use or performance of the Product or service, Seller's liability for damages to buyer or others resulting from the use of any Product or service finished hereunder shall in no way exceed the purchase price of said Product or the far market value of said service, except in instances of injury to persons or property.

(I) **Limitation of Remedies** Seller's obligations under this warranty are limited to the repair, replacement, or reimbursement of the Product. (J) **Limitation of Consequential Damages** For consumer Products, in such states or countries, for such products, some exclusions or limitations of this limited warranty may not apply. The stated express warranties are in lieu of or in addition to the far market value of said service, except in instances of injury to persons or property. Seller's liability for indirect or consequential damages arising out of or in connection with the use or performance of the Product or service, Seller's liability for damages to buyer or others resulting from the use of any Product or service finished hereunder shall in no way exceed the purchase price of said Product or the far market value of said service, except in instances of injury to persons or property.

(K) **Limitation of Remedies** Seller's obligations under this warranty are limited to the repair, replacement, or reimbursement of the Product. (L) **Limitation of Consequential Damages** For consumer Products, in such states or countries, for such products, some exclusions or limitations of this limited warranty may not apply. The stated express warranties are in lieu of or in addition to the far market value of said service, except in instances of injury to persons or property. Seller's liability for indirect or consequential damages arising out of or in connection with the use or performance of the Product or service, Seller's liability for damages to buyer or others resulting from the use of any Product or service finished hereunder shall in no way exceed the purchase price of said Product or the far market value of said service, except in instances of injury to persons or property.

(M) **Limitation of Remedies** Seller's obligations under this warranty are limited to the repair, replacement, or reimbursement of the Product. (N) **Limitation of Consequential Damages** For consumer Products, in such states or countries, for such products, some exclusions or limitations of this limited warranty may not apply. The stated express warranties are in lieu of or in addition to the far market value of said service, except in instances of injury to persons or property. Seller's liability for indirect or consequential damages arising out of or in connection with the use or performance of the Product or service, Seller's liability for damages to buyer or others resulting from the use of any Product or service finished hereunder shall in no way exceed the purchase price of said Product or the far market value of said service, except in instances of injury to persons or property.

(O) **Limitation of Remedies** Seller's obligations under this warranty are limited to the repair, replacement, or reimbursement of the Product. (P) **Limitation of Consequential Damages** For consumer Products, in such states or countries, for such products, some exclusions or limitations of this limited warranty may not apply. The stated express warranties are in lieu of or in addition to the far market value of said service, except in instances of injury to persons or property. Seller's liability for indirect or consequential damages arising out of or in connection with the use or performance of the Product or service, Seller's liability for damages to buyer or others resulting from the use of any Product or service finished hereunder shall in no way exceed the purchase price of said Product or the far market value of said service, except in instances of injury to persons or property.

(Q) **Limitation of Remedies** Seller's obligations under this warranty are limited to the repair, replacement, or reimbursement of the Product. (R) **Limitation of Consequential Damages** For consumer Products, in such states or countries, for such products, some exclusions or limitations of this limited warranty may not apply. The stated express warranties are in lieu of or in addition to the far market value of said service, except in instances of injury to persons or property. Seller's liability for indirect or consequential damages arising out of or in connection with the use or performance of the Product or service, Seller's liability for damages to buyer or others resulting from the use of any Product or service finished hereunder shall in no way exceed the purchase price of said Product or the far market value of said service, except in instances of injury to persons or property.

(S) **Limitation of Remedies** Seller's obligations under this warranty are limited to the repair, replacement, or reimbursement of the Product. (T) **Limitation of Consequential Damages** For consumer Products, in such states or countries, for such products, some exclusions or limitations of this limited warranty may not apply. The stated express warranties are in lieu of or in addition to the far market value of said service, except in instances of injury to persons or property. Seller's liability for indirect or consequential damages arising out of or in connection with the use or performance of the Product or service, Seller's liability for damages to buyer or others resulting from the use of any Product or service finished hereunder shall in no way exceed the purchase price of said Product or the far market value of said service, except in instances of injury to persons or property.

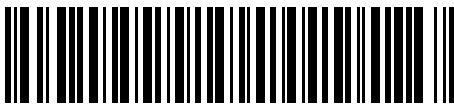
(U) **Limitation of Remedies** Seller's obligations under this warranty are limited to the repair, replacement, or reimbursement of the Product. (V) **Limitation of Consequential Damages** For consumer Products, in such states or countries, for such products, some exclusions or limitations of this limited warranty may not apply. The stated express warranties are in lieu of or in addition to the far market value of said service, except in instances of injury to persons or property. Seller's liability for indirect or consequential damages arising out of or in connection with the use or performance of the Product or service, Seller's liability for damages to buyer or others resulting from the use of any Product or service finished hereunder shall in no way exceed the purchase price of said Product or the far market value of said service, except in instances of injury to persons or property.

(W) **Limitation of Remedies** Seller's obligations under this warranty are limited to the repair, replacement, or reimbursement of the Product. (X) **Limitation of Consequential Damages** For consumer Products, in such states or countries, for such products, some exclusions or limitations of this limited warranty may not apply. The stated express warranties are in lieu of or in addition to the far market value of said service, except in instances of injury to persons or property. Seller's liability for indirect or consequential damages arising out of or in connection with the use or performance of the Product or service, Seller's liability for damages to buyer or others resulting from the use of any Product or service finished hereunder shall in no way exceed the purchase price of said Product or the far market value of said service, except in instances of injury to persons or property.

(Y) **Limitation of Remedies** Seller's obligations under this warranty are limited to the repair, replacement, or reimbursement of the Product. (Z) **Limitation of Consequential Damages** For consumer Products, in such states or countries, for such products, some exclusions or limitations of this limited warranty may not apply. The stated express warranties are in lieu of or in addition to the far market value of said service, except in instances of injury to persons or property. Seller's liability for indirect or consequential damages arising out of or in connection with the use or performance of the Product or service, Seller's liability for damages to buyer or others resulting from the use of any Product or service finished hereunder shall in no way exceed the purchase price of said Product or the far market value of said service, except in instances of injury to persons or property.

(AA) **Limitation of Remedies** Seller's obligations under this warranty are limited to the repair, replacement, or reimbursement of the Product. (AB) **Limitation of Consequential Damages** For consumer Products, in such states or countries, for such products, some exclusions or limitations of this limited warranty may not apply. The stated express warranties are in lieu of or in addition to the far market value of said service, except in instances of injury to persons or property. Seller's liability for indirect or consequential damages arising out of or in connection with the use or performance of the Product or service, Seller's liability for damages to buyer or others resulting from the use of any Product or service finished hereunder shall in no way exceed the purchase price of said Product or the far market value of said service, except in instances of injury to persons or property.

72-68903-02
Preliminary



For the latest version of this guide go to: <http://www.symbol.com/manuals>.

United States	1-800-853-5350	Canada (Outside Canada)	1-866-416-8545
United Kingdom	0800 328 2424	Asia/Pacific	+65 6798 9600
Australia	1-800-672-906	Austria/Osterreich	+43 72232 4375
Denmark/Danmark	7020-1718	Finland/Suomi	05407 580
France	01-40-96-52-21	Germany/Deutschland	6074-49020
Italy/Italia	2-49441	Mexico/México	5-520-1835
Netherlands/Nederland	315-271700	Norway/Norge	+47 2232 4375
South Africa	11-8095311	Spain/España	91 324 40 00
Sweden/Sverige	84452900	Inside Spain	+34 91 324 40 00
Latin America	1-800-347-0178	Outside Spain	+1-954-255-2610
Sales Support	+1-954-255-2610	Outside US	
Europe/Mid-East	+44 118 945 7360		
Distributor Operations			

Before you use the unit, it must be configured to operate in your facility's network and run your applications. If you have a problem running your unit or using your equipment, contact your facility's Technical or Systems Support. If there is a problem with the equipment, they will contact the Symbol Support Center.

Service Information

Regulatory Information

This document supports all MC30XX product configurations.

For use only with Symbol approved and UL listed MC30XX mobile computers, Symbol approved and UL listed MC30XX accessories and/or Symbol approved and UL listed/recognized MC30XX battery packs.

All Symbol devices are designed to be compliant with rules and regulations in locations they are sold and will be labeled as required. Any changes or modifications to Symbol Technologies equipment, not expressly approved by Symbol Technologies, could void the user's authority to operate the equipment.

Radio Modules

This device can contain the following approved radio modules. These modules are identified below:

Wireless Local Area Network:

- Bluetooth Module
- Symbol 21-21160*, 802.11abg DSSS radio card.

Wireless Wide Area Network:

- Siemens MC46 - GSM/GPRS 850/1800/1900.
- Siemens MC45 - GSM/GPRS 900/1800/1900.
- Sierra Wireless EM3420 CDMA 2000-1X dual band 800/1900) radio card.

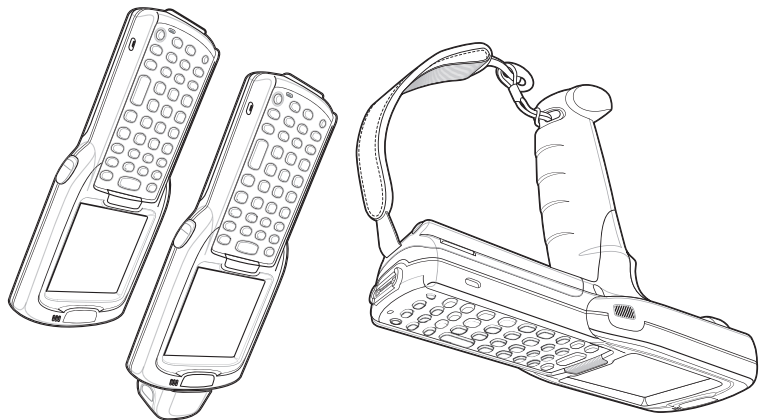
*This device can incorporate the International Roaming feature (IEE802.11d) which will ensure the product operates on the correct channels for the particular country of use.

Power Supply

Use only a Symbol-approved power supply output rated 5.4Vdc and minimum 3A. The power supply is certified to EN60950 with SELV outputs. Use of alternative power supply will invalidate any approval given to this device and may be dangerous.

Benutzen Sie nur eine Symbol Technologies genehmigt in den Ausgabe: 5.4Vdc und minimum 3A. Die Stromversorgung ist bescheinigt nach EN60950 mit SELV Ausgaben. Bei Verwendung eines anderen Netzteils werden alle für das Gerät gewährten Genehmigungen außer Kraft gesetzt, und der Betrieb kann gefährlich sein.

The Enterprise Mobility Company™
Symbol



For Embedded Windows® CE .NET

licensing, Patent and Regulatory Information

MC3000 Series

© 2004 SYMBOL TECHNOLOGIES, INC. All rights reserved.

Symbol reserves the right to make changes to any product to improve reliability, function, or design.

Symbol does not assume any product liability arising out of, or in connection with, the application or use of any product, circuit, or application described herein.

No license is granted, either expressly or by implication, estoppel, or otherwise under any patent right or patent, covering or relating to any combination, system, apparatus, machine, material, method, or process in which Symbol products might be used. An implied license exists only for equipment, circuits, and subsystems contained in Symbol products.

Symbol and the Symbol logo are registered trademarks of Symbol Technologies, Inc. Other product names mentioned in this manual may be trademarks or registered trademarks of their respective companies and are hereby acknowledged.

Symbol Technologies, Inc.
One Symbol Plaza
Holtsville, N.Y. 11742-1300
<http://www.symbol.com>

Patents

This product is covered by one or more patents listed on the website: <http://www.symbol.com/patents>

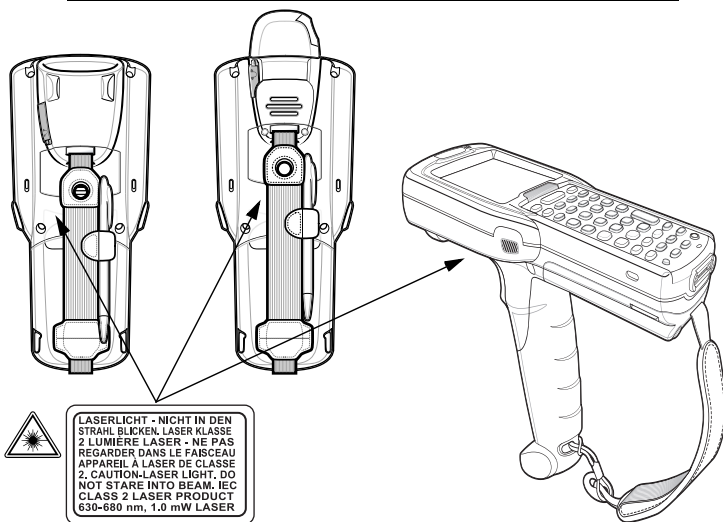
Ergonomic Recommendations

Caution: In order to avoid or minimize the potential risk of ergonomic injury follow the recommendations below.

- Consult with your local Health & Safety Manager to ensure that you are adhering to your company's safety programs to prevent employee injury.
- Reduce or eliminate repetitive motion
 - Maintain a natural position
 - Reduce or eliminate excessive force
 - Keep objects that are used frequently within easy reach
 - Perform tasks at correct heights
 - Reduce or eliminate vibration
 - Reduce or eliminate direct pressure
 - Provide adjustable workstations
 - Provide adequate clearance
 - Provide a suitable working environment
 - Improve work procedures.

Scanner Labeling

CAUTION- LASER LIGHT WHEN OPEN. DO NOT STARE INTO BEAM.
ATTENTION- LUMIÈRE LASER EN CAS D'OUVERTURE. NE PAS REGARDER DANS LE FAISCEAU.
VORSICHT- LASERLICHT, WENN ABDECKUNG GEÖFFNET. NICHT IN DEN STRAHL BLICK
COMPLIES WITH 21CFR1040.10, IEC 825-1:1993/EN60825-1:1994 + A11:1996



LASERLICHT - NICHT IN DEN STRAHL BLICKEN. LASERKLASSE 2. LUMIÈRE LASER - NE PAS REGARDER DANS LE FAISCEAU APPAREIL À LASER DE CLASSE 2. CAUTION- LASER LIGHT. DO NOT STARE INTO BEAM. IEC CLASS 2 LASER PRODUCT 630-690 nm, 1.0 mW LASER

Laser Labels

In accordance with Clause 5, IEC 825 and EN60825, the following information is provided to the user:



ENGLISH	
CLASS 1	CLASS1 LASER PRODUCT
CLASS2	LASER LIGHT DO NOT STARE INTO BEAM CLASS2 LASER PRODUCT
DANISH / DANSK	
KLASSE 1	KLASSE 1 LASERPRODUKT
KLASSE 2	LASERLYS SE IKKE IND I STRÅLEN KLASSE 2 LASERPRODUKT
DUTCH / NEDERLANDS	
KLASSE 1	KLASSE 1 LASERPRODUCT
KLASSE 2	LASERLICHT NIET IN STRAAL STAREN KLASSE 2 LASERPRODUCT
FINNISH / SUOMI	
LUOKKA 1	LUOKKA 1 LASERTUOTE
LUOKKA 2	LASERVALO ÄLÄ TUOJETA SÄDETTÄ LUOKKA 2 LASERTUOTE
FRENCH / FRANÇAIS	
CLASSE 1	PRODUIT LASER DE CLASSE 1
CLASSE 2	LUMIÈRE LASER NE PAS REGARDER LE RAYON FIXEMENT PRODUIT LASER DE CLASSE 2
GERMAN / DEUTSCH	
KLASSE 1	LASERPRODUKT DER KLASSE 1
KLASSE 2	LASERSTRAHLEN NICHT DIREKT IN DEN LASERSTRAHL SCHAUEN LASERPRODUKT DER KLASSE 2

HEBREW	
1	מוצר לייזר רמה 1
2	אור לייזר אין להביט אל תוך האור מוצר לייזר רמה 2
ITALIAN / ITALIANO	
CLASSE 1	PRODOTTO AL LASER DI CLASSE 1
CLASSE 2	LUCE LASER NON FISSARE IL RAGGIO/PRODOTTO AL LASER DI CLASSE 2
NORWEGIAN / NORSK	
KLASSE 1	LASERPRODUKT, KLASSE 1
KLASSE 2	LASERLYS IKKE STRÅL INN I LYSSTRÅLEN LASERPRODUKT, KLASSE 2
PORTUGUESE / PORTUGUÊS	
CLASSE 1	PRODUTO LASER DA CLASSE 1
CLASSE 2	LUZ DE LASER NÃO PRAO O RAIO LUMINOSO PRODUTO LASER DA CLASSE 2
SPANISH / ESPAÑOL	
CLASE 1	PRODUCTO LASER DE LA CLASE 1
CLASE 2	LUZ LASER NO MIRE FUJAMENTE EL RAYO PRODUCTO LASER DE LA CLASE 2
SWEDISH / SVENSKA	
KLASSE 1	LASERPRODUKT KLASSE 1
KLASSE 2	LASERLJUS STRÅLA INTE MOT STRÅLEN LASERPRODUKT KLASSE 2

Radio Frequency Interference Requirements



Note: This equipment has been tested and found to comply with the limits for a Class B digital device, pursuant to Part 15 of the FCC rules. These limits are designed to provide reasonable protection against harmful interference in a residential installation. This equipment generates, uses, and can radiate radio frequency energy and, if not installed and used in accordance with the instructions, may cause harmful interference to radio communications. However there is no guarantee that interference will not occur in a particular installation. If this equipment does cause harmful interference to radio or television reception, which can be determined by turning the equipment off and on, the user is encouraged to try to correct the interference by one or more of the following measures:

- Reorient or relocate the receiving antenna
- Increase the separation between the equipment and receiver
- Connect the equipment into an outlet on a circuit different from that to which the receiver is connected
- Consult the dealer or an experienced radio/TV technician for help.

Radio Transmitters (Part 15)

This device complies with Part 15 of the FCC Rules. Operation is subject to the following two conditions: (1) this device may not cause harmful interference, and (2) this device must accept any interference received, including interference that may cause undesired operation.

Radio Frequency Interference Requirements - Canada

This Class B digital apparatus complies with Canadian ICES-003.

Cet appareil numérique de la classe B est conforme à la norme NMB-003 du Canada.

Radio Transmitters

This device complies with RSS 210 of Industry & Science Canada. Operation is subject to the following two conditions: (1) this device may not cause harmful interference and (2) this device must accept any interference received, including interference that may cause undesired operation.

Label Marking: The term "IC" before the radio certification only signifies that Industry Canada technical specifications were met.

CE Marking and European Economic Area (EEA)

RLAN's (2.4GHz) for use through the EEA have the following restrictions:

- Maximum radiated transmit power of 100 mW EIRP in the frequency range 2.400 - 2.4835 GHz
- France, equipment is restricted to 2.4465 - 2.4835 GHz frequency range
- Belgium outside usage, the equipment is restricted to 2.460 - 2.4835 GHz frequency range
- Italy requires a user license for outside usage.

Bluetooth™ for use through the EEA have the following restrictions:

- Maximum radiated transmit power of 100 mW EIRP in the frequency range 2.400 - 2.4835 GHz
- Belgium outside usage, the equipment is restricted to 2.460 - 2.4835 GHz frequency range
- Italy requires a user license for outside usage.

Statement of Compliance

Symbol Technologies, Inc., hereby, declares that this device is in compliance with the essential requirements and other relevant provisions of Directives 1999/5/EC, 89/336/EEC and 73/23/EEC. Declaration of Conformities may be obtained from: <http://www2.symbol.com/doc/>

Other Countries

Mexico - Restrict Frequency Range to: 2.450 - 2.4835 GHz.

Israel - Restrict Frequency Range to: 2.418 - 2.457 GHz.

Sri Lanka - Restrict Frequency Range to: 2.400 - 2.430 GHz.

Battery Information

Symbol rechargeable battery packs are designed and constructed to the highest standards within the industry. However, there are limitations to how long a battery can operate or be stored before needing replacement. Many factors affect the actual life cycle of a battery pack, such as heat, cold, harsh environmental conditions and severe drops. When batteries are stored over six (6) months, some irreversible deterioration in overall battery quality may occur. Store batteries discharged in a dry, cool place, removed from the equipment to prevent loss of capacity, rusting of metallic parts and electrolyte leakage. When storing batteries for one year or longer, they should be charged and discharged at least once a year. If an electrolyte leakage is observed, avoid any contact with affected area and properly dispose of the battery. Batteries must be charged within the 32° to 104° F (0° to +40° C) ambient temperature range. Replace the battery when a significant loss of run time is detected. Standard warranty period for all Symbol batteries is 30 days, regardless if the battery was purchased separately or included as part of the mobile computer or bar code scanner. For more information on Symbol batteries, please visit: <http://mysymbolcare.symbol.com/battery/batbasics1.html>