

- MediaMVP can scale DivX videos up to full screen, but can only do this on videos of exactly 320x240 or 640x480. If your videos are another format, they will be “letter-boxed” on your TV set.
- After using the Fast-Forward and Fast-Rewind buttons a loss of speech synchronization may occur.
- your DivX videos need to have a .AVI file extension in their names
- Once DivX videos are playing, they will typically consume most of the CPU power available on your PC. Therefore, you should not expect to be able to do other tasks on your PC while playing DivX videos.

## Radio menu

MediaMVP allows you to listen to Internet Radio stations through your TV set. MediaMVP accomplishes this by opening a special link on your PC to the Internet radio station, and then “streams” the Internet audio over your home network to the MediaMVP, where the audio is output to the TV set. **Note:** your PC must be able to access the Internet.

To play an Internet radio station through the MediaMVP, the Internet radio station must do two things:

- it must transmit audio in either MP3 or in WMA formats. Some radio stations transmit using Real audio, which the MediaMVP cannot currently play.
- the Internet radio station must be accessible via a direct Internet link. In other words, you need to be able to put a URL in Internet Explorer and reach the Internet radio station directly without going through any levels of indirection. An example of a website which has direct links to Internet radio stations is Shoutcast.

Here is how you can listen to Internet radio using MediaMVP:

### Step 1: Create a link to an Internet radio station on your PC

Open Internet Explorer and go to a page with Internet Radio stations. Shoutcast is one example: <http://www.shoutcast.com>

**R**emember: *you must be selecting Internet radio stations which can be directly accessed by your browser (and not via a redirected URL). There are many Internet radio stations which do not allow a direct link to the station. These Internet radio stations cannot be played by MediaMVP.*

Choose an Internet Radio station or program and use your **RIGHT** mouse button to click on the button which allows you to listen to a station (for example, the **Tune In** button in **Shoutcast**). When you click your **RIGHT** mouse button, a Pop-Up Menu will appear.

## Choose **Add to MVP Favorite Radio Stations**.

A window will pop up entitled **MVP Radio Station**. You will be asked to enter **Radio station name**. You can do so if you like, or leave the default. You can also place the radio station in a category (you will see these categories on your TV set via the MediaMVP).

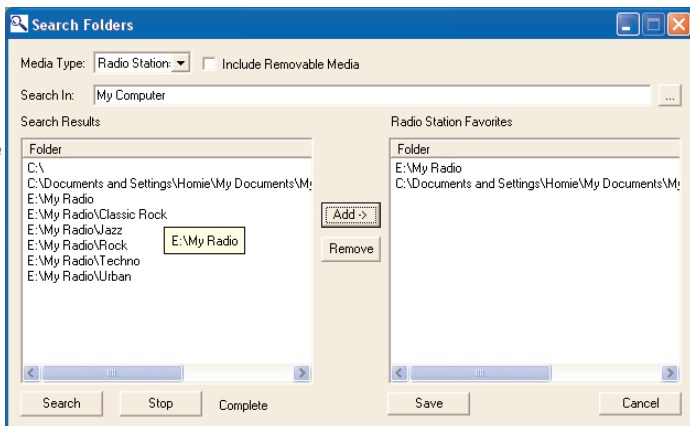
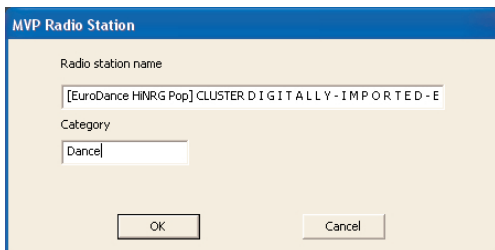
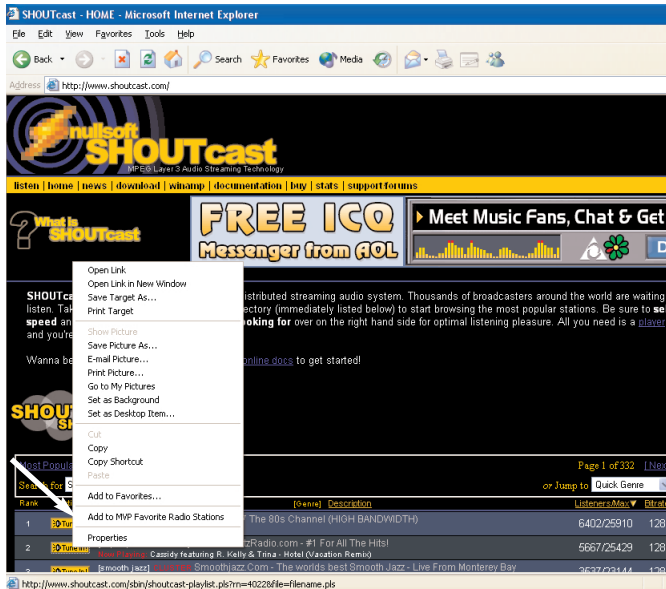
When you are finished naming your radio station, click **OK**.

## Step 2: Add radio stations to the MediaMVP media list

Now we need to add the Internet Radio station directory to the MediaMVP media list so that the MediaMVP can "see" them.

On your Windows screen, click **Start / Programs / HauppaugeMediaMP then Search for Media**. (this program also can be found in **Program Files/Hauppauge MediaMVP** directory)

Under **Media Type:** choose **Radio Stations** and click on **Search**. After a few moments, you will see a list of directories on your local hard disks which have MediaMVP links to Internet Radio stations. Click on those directories you would like to have MediaMVP list on your TV set, click **Add** and then click on **Save**.



### Step 3: Playing an Internet radio station on the MediaMVP

Click the **Go button** on the MediaMVP remote. Click on the **Radio button**. If you have set up the directories (the paragraph above), you will see a **MyRadio** listing. Go to this directory. In the directory, you will see a list of Internet radio stations you have made links to.

To start playing an Internet radio station, use your remote control to **select the station** and then click the **Play button**.

**N**ote: If you click on a radio station and the audio does not start within a few seconds, the radio station cannot be accessed by the MediaMVP. One reason for this is that this station cannot be accessed directly (it uses redirection to get to the station). Another reason might be that the radio station does not transmit audio in one of the formats MediaMVP can play (currently MP3 and WMA).



### How the Internet radio stations are named, stored and played by the MediaMVP:

When you are browsing Internet radio stations while in Internet Explorer, and you right click on a link to an Internet radio station, the MediaMVP application running on the PC makes a note of the URL the link is pointing to. The **MVP Radio Station** pop up menu then is run, allowing you to name the link and also put the link into a category (for example: Jazz), and then a file is created in the My Radio directory with that name. The file extension is .MVP, and within the file is the URL of the radio station.

When you want to play a radio station, the MediaMVP application running on the PC opens that file, goes to the URL within the file and then streams the audio over your network to the MediaMVP, where the audio is then played out to your TV set.

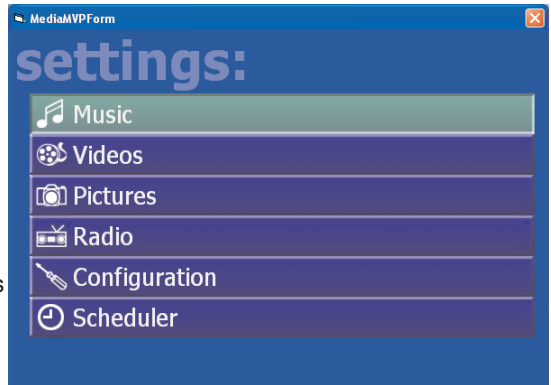
If the file holds a link which is not valid (a link which does not directly point to an Internet radio station), then the MediaMVP radio software waits for about 1 minute before it senses that it cannot open the URL and find a radio station. MediaMVP will then return to the Radio menu.

# Settings menu

## **Directories for Music, Videos, Pictures and Internet radio**

The Settings menu is where you can choose the directories on your PC where your **Music**, **Video** and **Pictures** media are stored. Also, the Settings menu has a **Configuration menu** where you can set the video format (NTSC or PAL), video size (4:3 or 16:9), and flicker reduction (none, low, medium, high) for your TV set.

When you enter the **Settings:Music**, **Settings:Video** or **Settings:Pictures** menus, you will see a listing of directories (such as **My Documents**) and drives (disk drives, floppy drives or CD-ROM drives) on your PC.



To find media within a drive, scroll down to the directory (C:\ for example) and then click the **OK** button on your remote control. This will bring the contents of the selected directory onto your TV screen. To select subdirectories, scroll down to the subdirectory and hit the **OK** button. You will see if the media type you are looking for (music, videos, pictures) exists in the directory chosen by having any existing media listed.

**To add a directory**, hit the **green button on the remote**.

If you would like to delete a directory from the list you see when entering Videos, Music or Pictures from the Main menu, hit the **red button on the remote**.

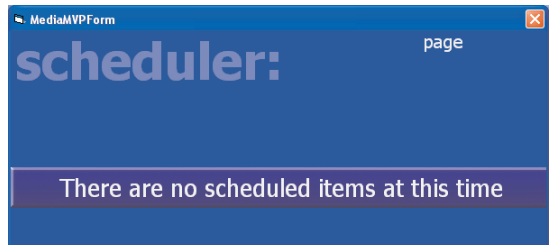
## **Scheduling a WinTV recording from MediaMVP**

MediaMVP has the ability to set up a scheduled recording using a Hauppauge WinTV in the PC server. This sets up a recording session using WinTV-Scheduler.

The format of the recording is set by the WinTV application. For example, if you have a WinTV-PVR-250 in your PC and want to record using DVD-LongPlay, you need to have set the WinTV application to record using DVD-LongPlay.

Here are the requirements to record:

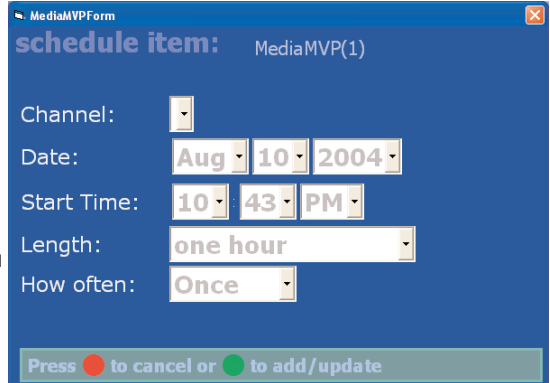
- your PC needs to have a WinTV installed



- you need to have password permission to record on your PC
- your PC needs to have the WinTV-Scheduler installed

The MediaMVP scheduler can be found in the **Settings menu**. Go to **Settings:Scheduler**.

If you have no recordings scheduled, you will see a message “There are no scheduled recordings”. Click the **green** button on your remote control to add a scheduled record item.



Use the arrow keys to move to the fields in ‘**Schedule Item**’. When you are finished setting up your recording, click the **green** button on your remote.

## **Configuration menu**

### **Video thumbnails**

In the Configuration menu, you can turn thumbnails on or off. Thumbnails are small images of your digital pictures or a small image taken from the first frame of a video when browsing through lists of Videos or Pictures. Thumbnails are only viewable if your PC is running Windows XP and has suitable MPEG decoders installed.

**Note:** if your PC slows down when viewing directories of Videos or Pictures, you should turn Thumbnails off.

### **Flicker filter**

The flicker filter removes flickering which might appear on some TV sets when displaying text and pictures. High end TV sets can use the flicker filter turned off, while normal TV sets might look better if flicker filter is set to medium or high. There are four settings: off, low, medium, high.

## **Remote control**

**Power button:** the Power button will bring the MediaMVP into a standby mode and will turn off the video output. It will not turn off the MediaMVP completely. When you click the **Power button** again, the MediaMVP will resume from standby and turn on its video output.

If you want to reset MediaMVP, you need to remove the power plug for a few seconds, then reconnect it.

**Go button:** displays the **Main menu**. When in any menu, clicking the **Go** button will bring up the Main menu.

**OK button:** the **OK** button is similar to the Enter key.

**Menu button:** brings up the **Sub menu**. For example, when in the Music menu, clicking the **Menu** button will bring up the sub menu allowing the selection of Play all / Sort by date / Sort by name / Shuffle.

**Back button:** goes back to the previous menu. For example, if you have entered a directory and you'd like to return to the previous directory, click **Back**.

**Pause button:** will pause the music, video or slideshow currently playing. Click **Play** or **Pause** again to continue playing from where you left off.

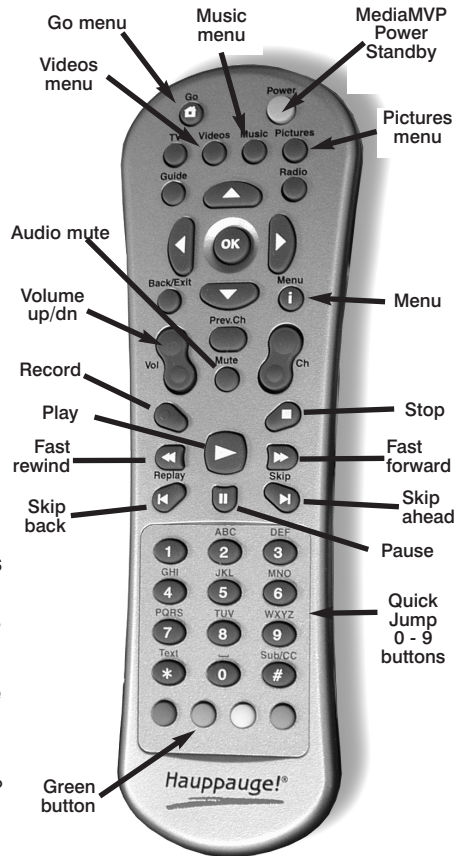
**Vol- and Vol+ buttons:** you can control the audio volume by using internal hardware in the MediaMVP. This means you can adjust the audio volume without having to use your TV sets' remote control.

**Skip ahead and Skip back:** the Skip buttons are used to skip 6 items ahead or backwards when in the media lists (music, videos and pictures) or when viewing pictures. When playing videos, **Skip** advances the video 30 seconds.

**Quick Jump 0 to 9 buttons:** When viewing lists of media, or when playing videos, the number keys moves to 10% when you hit the '1' key, 20% when you hit the '2' key, etc.

When viewing lists, the number buttons will move you to positions within the list. For example, if you are looking at a list of videos in the Music menu, hitting the "5" button will move you to 50% of the way through the list.

When watching a video, you can quickly skip through the video by hitting the 0-9 buttons. When you hit one of these keys, you will skip to, for example, 10% of the video file when you hit the '1' key, 20% of the video file when you hit the '2' and so forth.



## Installing MediaMVP software updates

You can download MediaMVP software updates from the Hauppauge website at:

[http://www.hauppauge.com/pages/support\\_mediampv.html](http://www.hauppauge.com/pages/support_mediampv.html)

To install a new version of MediaMVP software:

1. unplug the power to the MediaMVP
2. download and install the new version on your PC
3. replug the power to MediaMVP. The new MediaMVP application will then be loaded onto MediaMVP through your network.

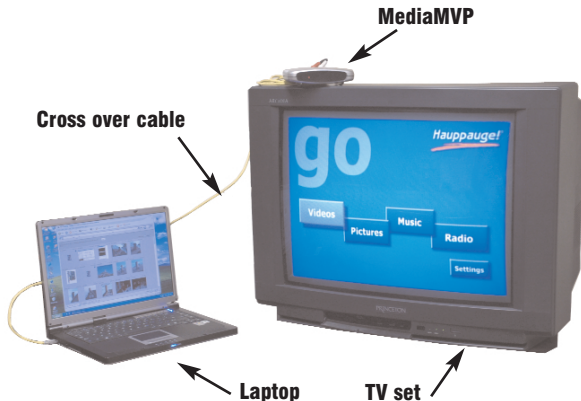
## Connecting MediaMVP directly to a laptop or PC

You can connect the MediaMVP directly to a PC or laptop. To do this, you will need a 'crossover' cable, which you can either buy at a computer store or make yourself.

Here is how you connect the MediaMVP directly to your PC or laptop:

1. **Purchase or make a cross over Ethernet cable.** Examples of a crossover cable are the Belkin CAT 5e Crossover Cable for computer-to-computer connection
2. **Connect one end of the crossover cable** to the LAN port on the MediaMVP, and the other end to the LAN port on your PC or laptop
3. **Make sure the MediaMVP software is installed on your PC or laptop.** See "Installing the MediaMVP software" section. Leave your PC turned on.
4. **Connect the MediaMVP to the TV set,** and turn on the MediaMVP. You should see the 'Searching for PC server' on the TV set. On the PC, you should see a Windows message say **'Ethernet connection found'**

Since the direct connection from a MediaMVP to a PC is very fast, you will get maximum performance.



## Accessing media which is on another computer

You can access media which is on another computer via your home network. To do this, you need to allow the MediaMVP applications running on your PC to have access to the remote computers. Here is how you do this:

- On the PC where you have installed the MediaMVP software, stop the MediaMVP services by clicking on **Start/Programs/Hauptpage MediaMVP**, and then **Stop**.
- Locate the **My Computer** icon on your desktop or in your Start menu. **Right mouse button click** on the **My Computer** icon and select **Manage** from the drop down menu. Click on the “+” sign next to the **Services and Applications** listing and then click on the **Services** sublisting.
- Locate and right mouse click on the name **MVPMedia** and select **Properties** from the drop down menu.
- Click on the **Log On** tab and then select the radio button that says **This account** .
- Type in the **username** that has permissions to access the network and the local desktop, (the user that has administrator rights to the computer). Once you have entered the username, type in the password for that username.
- Click on the **Apply** button and then the **OK** button.
- You will need to repeat the previous 4 steps for the **MVPMediaSvc service**.
- Once you have completed these steps for both services, you will still be in the Computer Management window. Click on the listing for **Local Users and Groups**.
- Select the **Users** folder.
- **Right mouse click** on the username that you used for the MediaMVP services in the above steps and click on **Properties** from the drop down menu. Put a check mark in the box next to **Password never expires**, then click on **Apply** and then **Okay**.
- Restart the MediaMVP services by clicking on **Start/Programs/Hauptpage MediaMVP**, and then **Restart**.

Once the services have restarted, you can search for media on other PCs on the network that your username has access to. Click on **Start/Programs/Hauptpage MediaMVP**, and then **Search for Media**. Click on the button with the **three dots (Browse)**.

You will now be in the **Select Directory** window in which you can browse to other PCs on the network.



# Troubleshooting

## **MediaMVP does not display the Main menu:**

In order to display the Main menu, MediaMVP needs to be able to “talk” to the PC which has the MediaMVP software installed.

There are several things which might cause the MediaMVP not to be able to “talk” to the PC:

- your PC is not turned on. MediaMVP requires the PC to be turned on to operate. Make sure your PC is not in standby mode.
- The network cable is not connected to either the PC or the MediaMVP.
- The network router is not turned on.
- The PC and MediaMVP are not on the same network segment. Make sure the PC and MediaMVP are connected to the same router, switch or hub.
- A firewall is running on your PC, and is not allowing the MediaMVP to access the PC.

## **MediaMVP does not respond to the remote control:**

There are many reasons why the MediaMVP might not respond to remote control commands. Most times, this is due to the PC becoming busy executing a previous MediaMVP command.

If this happens, click the **green Power** button on the remote control. This will suspend any MediaMVP operations on the PC. If you then click the **green Power** button once more, MediaMVP will resume from the Go menu.

## **Accessing the Video menu takes several minutes (or more):**

Thumbnails take a long time to generate, and might even stop your PC from operating if there is a video defect in one of the movies in your Videos directory.

To solve this problem, turn **OFF video thumbnails** in **Settings/Configuration**.

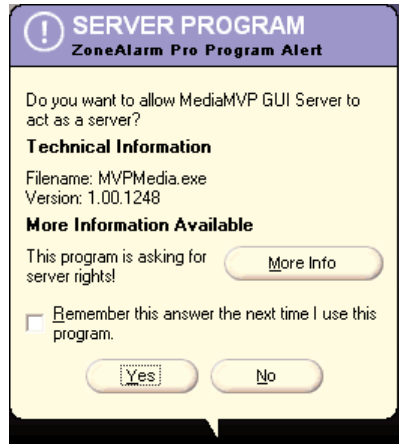
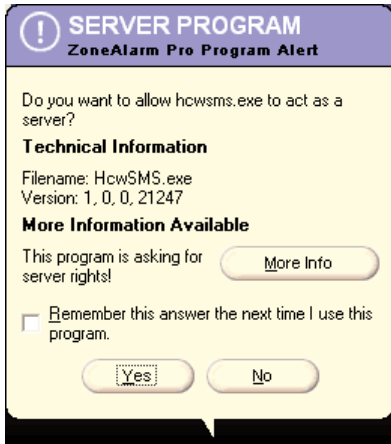
## **ZoneAlarmPro Firewall**

There are four firewall alert menus which pop up during the first use of MediaMVP. For each of these alerts, you should allow access by clicking **Yes**.

To avoid these warning messages from popping up each time you use MediaMVP, select **'Remember this answer'**.

There are three MediaMVP services which will require access to your network:

**HcwSMS.exe**, **MVPMedia.exe** and **MVPStart.exe**. Grant access to these programs.



### **If you are using the built-in WindowsXP Firewall**

Currently you need to disable this firewall for the MediaMVP to work correctly. Please check our web site for updates which might allow the WindowsXP Firewall to operate at the same time as the MediaMVP.

### **Disabling WindowsXP firewall**

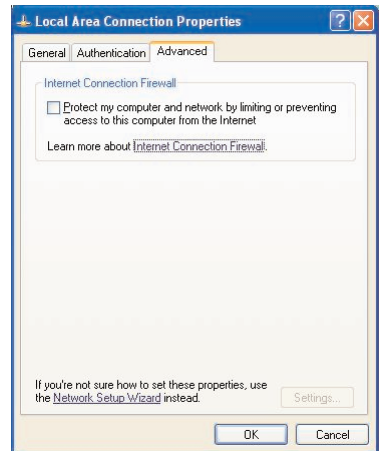
To disable the Windows XP firewall, click **Start** and then go into **Control Panel** and then **Network Connections**. Click on **Local Area Connection**. You will see the **Local Area Connection Properties** menus. Click on the **Advanced** tab and unclick "**Protect my computer**".

Click **OK** and the Windows XP Firewall will be disabled.

### **Contacting technical support if you experience MediaMVP problems:**

e-mail: techsupport@hauppauge.com

telephone: 631-434-3197



## FCC Statement

### Radio Interference Statement:

ID: H9OMEDIAMVP

User Caution: Changes or modifications not expressly approved by Hauppauge Computer Works could void the user's authority to operate the equipment. The antenna(s) used for this transmitter must be installed to provide a separation distance of at least 20 cm from all persons.

The **MediaMVP** has been tested and found to comply with the limits for a Class B digital device, pursuant to part 15 of the FCC Rules. These limits are designed to provide reasonable protection against harmful interference in a residential installation. This equipment generates, uses, and can radiate radio frequency energy and cause harmful interference to radio communications. However, there is no guarantee that interference will not occur in a particular installation. If this equipment does cause harmful interference to radio or television reception, which can be determined by turning the equipment off and on, the user is encouraged to try to correct the interference by one or more of the following measures: Reorient or relocate the receiving antenna. Increase the separation between the equipment and receiver. Connect the equipment into an outlet on a circuit different from that to which the receiver is connected. Consult the dealer or an experienced radio/TV technician for help.

### **CE Statement:**

This equipment has been tested and complies with EN 55013, EN 55022, EN 55024 and EN 55020 standards.

This document was created with Win2PDF available at <http://www.daneprairie.com>.  
The unregistered version of Win2PDF is for evaluation or non-commercial use only.