

MediaMVP wMediaMVP Quick Installation Guide

Contents of the MediaMVP package

MediaMVP device and stand

Ethernet cable for connection between the MediaMVP and your Router, Hub or Switch. This uses RJ-45 connectors and is 1.5 meters long. *

Video cable set to connect the MediaMVP to your TV set. The cable set includes Composite video (yellow RCA jack), Left Audio (white RCA jack), Right Audio (red RCA jack).

In Europe, a SCART cable is supplied instead of the video cable set. The SCART connector on the MediaMVP has composite, S-Video and RGB output, in addition to stereo audio output.

Remote control transmitter with 2 AAA batteries

MediaMVP Installation CD-ROM with:

MediaMVP Server application

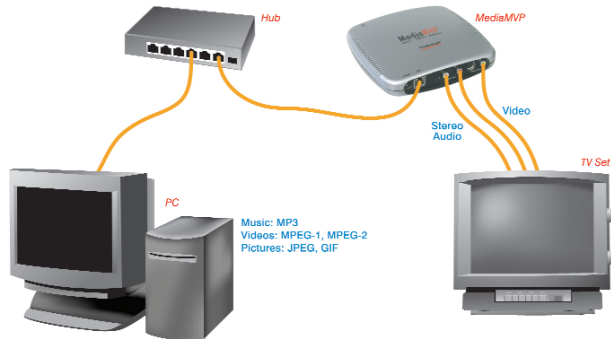
MediaMVP User Interface application

Search for Media application



* **Note:** you can purchase longer ethernet cables at most computer retail stores. Cat5 cable, as the cabling is commonly called, is available to lengths of 300 ft.

Overview of MediaMVP



MediaMVP bridges the home PC with television sets. MediaMVP is located at the TV set, and through your home local area network receives digital audio (MP3, WMA and WAV music), digital video (MPEG-1, MPEG-2 or DivX video), digital pictures (JPEG, BMP and GIF digital pictures) and Internet radio from a PC. MediaMVP then decodes the digital media and displays the decoded media on a TV set, TV monitor or plasma monitor. On your TV set, MediaMVP lists media which can be played.

MediaMVP connects to local area networks via its built-in Ethernet 10/100Mbps connection. It can also connect to Ethernet based LAN adapters such as Home Plug or wireless game adapters. The PC where both the MediaMVP software is loaded plus where your media files are located needs to be on the same network node as the MediaMVP. In general, if you have the PC and the MediaMVPs connected to the same network hub, access point or router, this requirement is satisfied.

Up to 12 MediaMVPs can be connected on a network. This means you can have a MediaMVP connected to the TV in your bedroom, one to the TV in the living room, one in the den, etc. The only limitation is that all the MediaMVPs need to be on the same network segment as the PC where your MediaMVP files are stored.

Internet radio is played by having the PC connect to an Internet radio station and then send streaming MP3 or WMA audio from the radio station to the MediaMVP. Only internet radio stations which are directly accessible via the Internet are supported.

DivX video playing is done via a transcode process. When you chose to play a DivX video, your PC's processor first decodes the DivX video in software, then reencodes the video into a high bit-rate MPEG-1 format. The PC then transmits the high bit-rate MPEG video over your network to the MediaMVP, where it is decoded and played on your TV set.

Technically speaking

MediaMVP's CPU engine (a 350 DMIPS PowerPC) runs the Linux operating system, plus has dedicated multimedia hardware for decoding MPEG video, audio plus MP3 music. Digital pictures are decoded by the PowerPC processor in software.

MediaMVP runs in a client/server system, where the server can be a PC running either Windows XP Home, XP Professional or Windows2000. The PC can be used for normal tasks while acting as the MediaMVP server. The application running on the MediaMVP is loaded from the PC when you turn on MediaMVPs power, therefore allowing undateable software via Internet downloads.

MediaMVP decodes full CCIR601 resolution NTSC and PAL encoded MPEG-2 bit streams in real time, up to and including 720x480 (NTSC) or 720x576 (PAL). MPEG video rates range from 1.5 Mbps to 10 Mbps (higher in bursts), limited by the LAN bandwidth. MediaMVP will upscale 320x240 VCD video to full screen. A tunable **Anti-Flicker Filter** is included to improve the video quality on the TV sets.

Step 1: Connecting MediaMVP to your network or PC

You can connect MediaMVP to your PC **through a network** or **directly to the PC or laptop**. You can use either method.

Connecting MediaMVP through a Network:

Using a standard Ethernet network cable (the **Ethernet cable** supplied or any Ethernet cable less than 300 feet long), plug one end into the **LAN port** of the MediaMVP, and the other end of the Ethernet cable into a **Ethernet port** of a network hub, router or switch. You can use 10Mbit or 100Mbit router/switches. If you are using your own cables, use Category 5 Ethernet cable for best results.

Note: the MediaMVP needs to be on the same network subnet as the PC where you loaded the **MediaMVP Server** application. Therefore, plug the MediaMVP into the same router as you've plugged your PC. If you have multiple routers, with the PC on a different router than the MediaMVP, the MediaMVP will not load the MediaMVP application.

Connecting MediaMVP directly to a PC or laptop:

If you would like to connect MediaMVP directly to a PC or laptop, you will need a "crossover" cable. **You cannot use a standard Ethernet cable to directly connect the MediaMVP to a PC or laptop.**

Please see the section entitled "**Connecting MediaMVP to a PC or laptop**".

Step 2: Connecting MediaMVP to your TV set

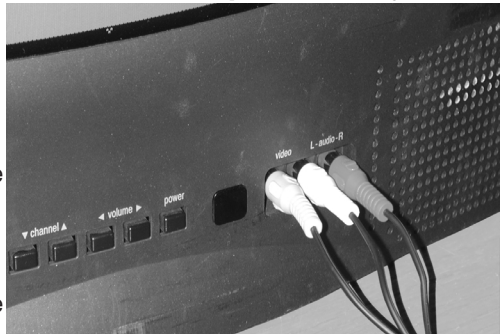
Connecting to a TV set:

Note: Your TV set needs to have A/V input jacks. If your TV only has RF inputs (normally from a TV antenna), then you will need to use a **Video-to-RF modulator**, which can be purchased from RadioShack.

Using the supplied **Video cable set**, connect one end of the **Composite video** (yellow RCA jack) cable to the **yellow jack on the MediaMVP** and connect the other end to the **Video Input jack on your TV set**.

Connect one end of the **Left Audio** (white RCA jack) cable to the **white jack on the MediaMVP**, and connect the other end to the **Left Audio input on your TV set**.

Connect one end of the **Right Audio** (red RCA jack) cable to the **red jack on the MediaMVP**, and connect the other end to the **Right Audio input on your TV set**.



Note: If your TV set has only one audio input, use just MediaMVP's **Left audio** cable.

On your TV set:

To use the MediaMVP, you need to select the **Video Input** on your TV set. Each TV set does this differently, but many TV sets have a button marked "TV/Video". Clicking this button normally switches from the TV tuner inside your TV set to the Audio/Video inputs being used by MediaMVP. Some TV sets have a TV/Video button on the remote.

If you cannot find a way to switch to Video Input on your TV set, refer to the TV set manual.

Step 3: Installing the MediaMVP software on your PC

When you have made all your network and TV connections, boot your PC and run the **MediaMVP Setup program** from the **MediaMVP Installation CD-ROM**.

Navigate to your CD-ROM drive and run **MediaMVPSetup_###.exe** (where ### is the version number of the setup program).

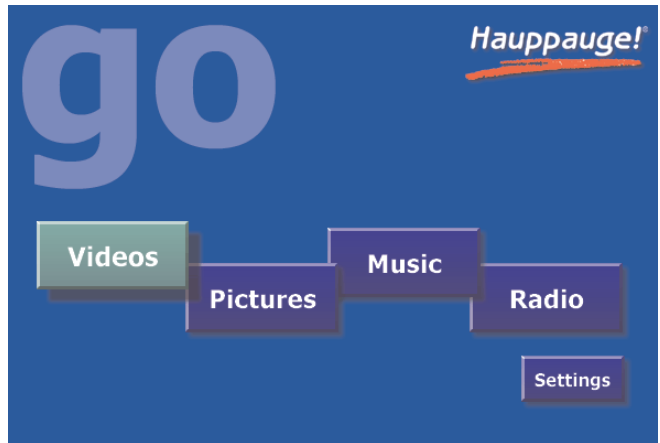
This should take a few minutes and is automatic.

Step 4: Power on the MediaMVP

After the MediaMVP Setup program has been run, turn on the MediaMVP by **plugging in the power adapter**. MediaMVP will display the following messages on your TV set:

1. **Contacting DHCP Server**
2. **Contacting MediaMVP Bootserver**
3. **Loading application**
4. **Starting application**
5. **Contacting server**
6. **Go menu**

You are now ready to experience digital media on your TV set!



If you cannot get beyond

Contacting DHCP Server: you are not connected to your hub, router or access point, or your cabling is defective. If you are directly connecting your MediaMVP to a PC and you get this message continuously, then you might be using a straight through ethernet cable instead of the crossover cable.

If you cannot get beyond Contacting MediaMVP Bootserver: your PC might be protected by a firewall, or the MediaMVP services have not started on your PC. Turn off your firewall to see if this is causing this problem, and if so, you need to reconfigure your firewall to allow the MediaMVP to access your PC (see Troubleshooting section).

Note: if you need to reboot MediaMVP, remove the power plug from MediaMVP, wait 5 seconds and plug it back in.

If you have a Firewall on your network

Many people install firewalls on PC networks to prevent unauthorized access to data in your PC. If you have a firewall such as Zone Alarm, you will need to configure the firewall to allow the MediaMVP to access a server application running on your PC.

ZoneAlarmPro Firewall

There are four firewall alert menus which pop up during the first use of MediaMVP. For each of these alerts, you should allow access by clicking **Yes**. Examples of warning messages are in the **Troubleshooting section**. To avoid warning messages from popping up each time

you use MediaMVP, select '**Remember this answer**'.

There are two MediaMVP services which will require access to your network: **HcwSMS.exe** and **MVPMedia.exe** Grant access to both of these programs.

The built-in WindowsXP Firewall

Currently you need to disable this firewall for the MediaMVP to work correctly. Instructions to do this are in the **Troubleshooting section**. Please check our web site for updates which might allow the WindowsXP Firewall to operate at the same time as the MediaMVP.

Searching for media on your PC

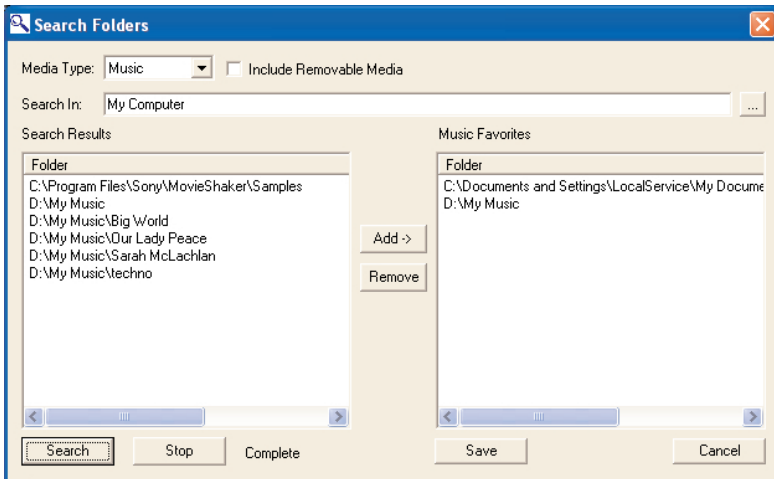
After installing the MediaMVP, there are two ways of finding media on your PC. You can either manually search for media from the TV set using MediaMVPs **Settings menu**, or you can automatically search for media using the **MediaMVP Search for Media program** on your PC.

To start the Search Folders program from the PC, click **Windows Start**, then **Programs**, and under **Hauptpage MediaMVP** run the **Search Folders** program.

You will see a menu which allows you to select the **Media Type** (music, videos, pictures) and the directories to be searched.

Select the **Media Type** and the **Search In** directory (choose "My Computer" to look in all directories) and click **Search**.

Once you start the search, any directory with the media type selected will appear in the **Search Results** box.



To add a directory, click on it and then click **Add**.

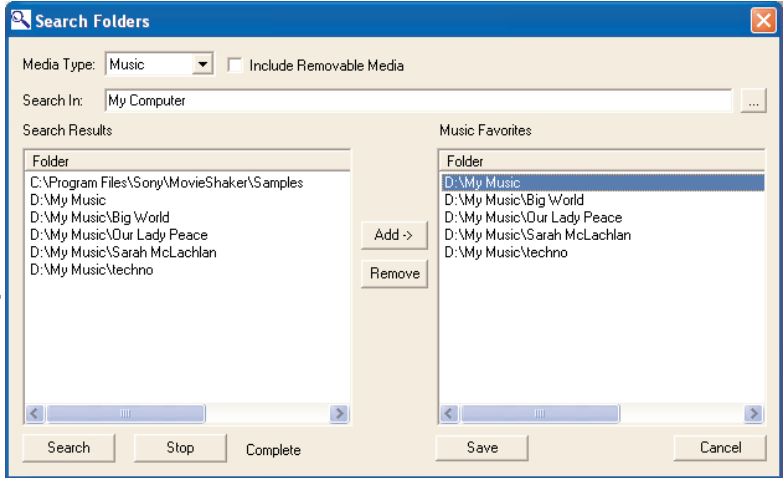
Note: right click your mouse in the **Favorites** list, then click **Add** to manually add a specific path (for example: when you already know where your music is on your disk drive, add that directory). Right click your mouse on a directory, then click **Remove** to delete a directory.

When you are finished searching for your media, close the Search application.

The directories selected will be listed on the TV set in MediaMVP's Video, Music, Pictures menus.

Searching for media from the MediaMVP

You can also choose directories for music, digital pictures and videos from the MediaMVP



“Settings” menu. For instructions, in the section entitled “MediaMVP menus”, look at the Settings menu.

Note: the first time you enter a directory, it takes a long time (as long as several minutes) while thumbnail images are created. The next time you enter the directory, the response will be immediate. You can also turn off thumbnailing in the Settings/Configuration menu.

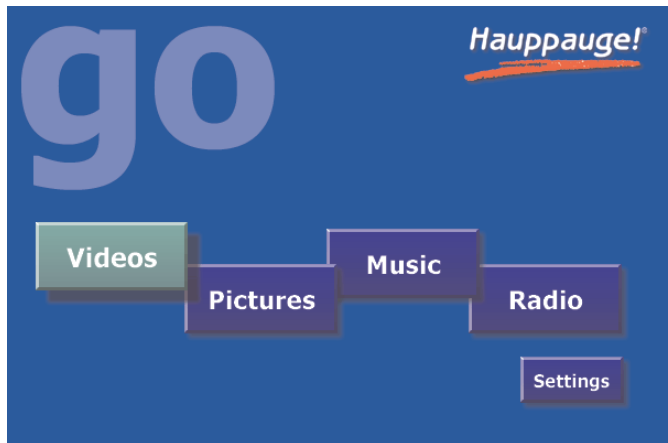
MediaMVP menus

MediaMVP Main menu (the Go menu)

MediaMVP's main menu guides you to Music, Videos and Pictures. Also, through Settings, the user can navigate to media stored on their PC.

Note: your PC must be running and both the PC and MediaMVP must be connected to the network before the Main menu will be displayed on your TV set.

Note: To access the Main menu at any point, click “Go” on the remote control.

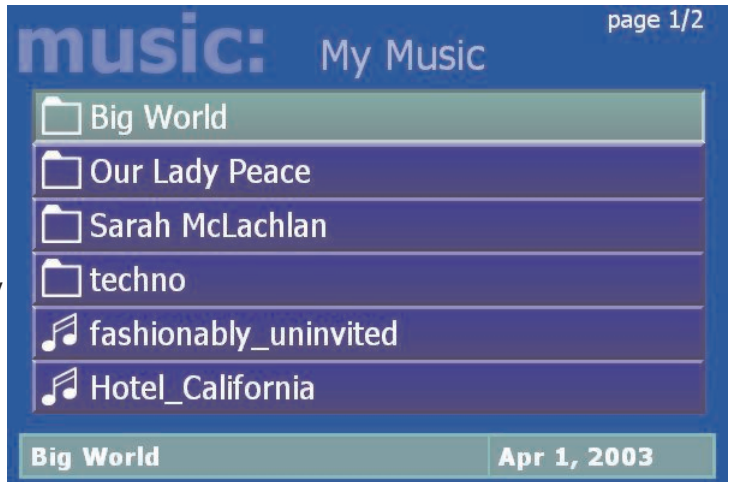


Music menu

The Music menu will show MP3 files, WMA audio or Music Playlists which are located in selected directories on your PC. You can play a music file (indicated by the music icon next to the file name) by either clicking the “**Play**” button or the “**OK**” button on the remote control.

To navigate to a sub menu (indicated by the ‘folder’ icon), cursor to the folder by using the arrow buttons on the Remote control and click the “**OK**” button on the remote.

Playlists are indicated by the ‘**playlist**’ icon. To play a playlist, simply cursor to a playlist and click “**OK**” on the remote control. Supported playlists are: M3U, PLS, B4S, and ASX.



If you click the “**Menu**” button on the remote control, a pop up menu will appear which will allow the sorting of the music by date or name, or a random order of music files. A “**Play all**” option is available, which will play all of the music located in the current directory.

To stop music, click the “**Stop**” button on the remote control.

To mute music, click the “**Mute**” button on the remote control.

Playing WMA audio files

To play WMA files (Windows Media Audio) with the MediaMVP, the installation of Windows Media Player 9 is required.

Playing a Picture Slideshow while listening to music

After selecting music, either an individual music title, a playlist or by using Play All, you can play Picture files by clicking the “**Go**” button on the remote control, right arrow to **Pictures**, and then entering the Pictures menu by clicking the “**OK**” button.

To mute the audio while watching a slideshow, click the “**mute**” button on the remote.

Creating music playlists

You can either automatically create playlists in an application such as Music match, or can manually create a playlist. If you want to create manual playlists, you can use either M3U or ASX files.

M3U is pretty simple to create. Here is an example. Just create the file in any text editor and save it into your music directory with an M3U extension.

```
C:\Documents and Settings\My Documents\My Music\Sara Mclachlan - Take your .mp3
C:\MyMusic\04-R.E.M. _ Everybody Hurts.mp3
C:\MyMusic\11-Bruce Hornsby & The Range _ The Way It Is.mp3
C:\MyMusic\06-Pink _ Family Portrait.mp3
```

Here is an example of an ASX playlist. Just create the file in any text editor and save it into your music directory with an ASX extension.

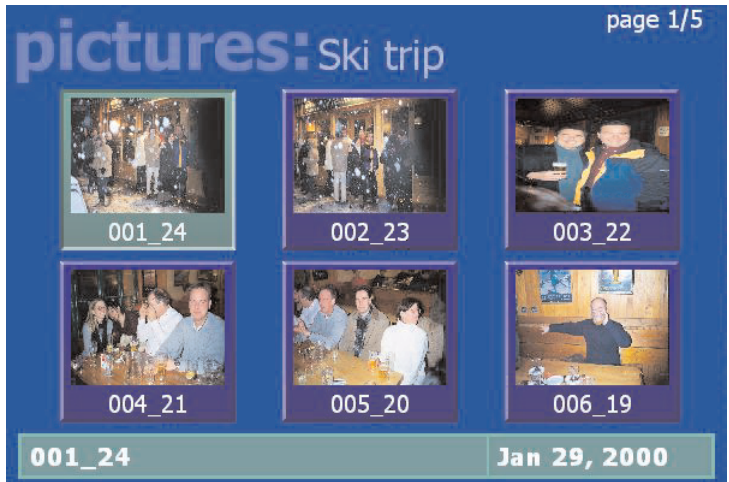
```
<ASX Version="3.0">
  <ENTRY>
    <REF HREF="C:\MyMusic\06-Pink _ Family Portrait.mp3"/>
  </ENTRY>
  <ENTRY>
    <REF HREF="C:\Documents and Settings\My Documents\My Music\Sara
Mclachlan - Take your .mp3"/>
  </ENTRY>
  <ENTRY>
    <REF HREF="C:\MyMusic\04-R.E.M. _ Everybody Hurts.mp3"/>
  </ENTRY>
  <ENTRY>
    <REF HREF="C:\MyMusic\11-Bruce Hornsby & The Range _ The Way It
Is.mp3"/>
  </ENTRY>
  <ENTRY>
    <REF HREF="C:\MyMusic\01-Meat Loaf _ I'd Do Anything For Love (But I
Wont Do That).mp3"/>
  </ENTRY>
  <ENTRY>
    <REF HREF="C:\MyMusic\04-Avril Lavigne _ I´m With You.mp3"/>
  </ENTRY>
</ASX>
```

Pictures menu

The Pictures menu will show JPG, JPEG, BMP or GIF files which are located in selected directories on your PC.

You can play a picture file (indicated by the thumb nail of the picture) by either clicking the "**Play**" button or the "**OK**" button on the remote control.

To navigate to a sub menu (indicated by the "folder" icon), cursor to the folder by using the arrow buttons on the Remote control and click the "**OK**" button on the remote.



If you click the "**Menu**" button on the remote control, a pop up menu will appear which will allow the sorting of the pictures by date or name, or a random order.

"**Play slideshow**" will play a slideshow of all of the pictures located in the current directory.

To return to the Pictures menu while viewing a picture, click the "**Back**" button on the remote control.

While running a slideshow, you can hit "**Pause**" to pause the slideshow. Hit either "**Pause**" again or "**Play**" to resume the slideshow.

When viewing pictures, the **Skip ahead** button on the remote control will move 6 pictures forward, while the **Skip back** button will skip back 6 pictures.

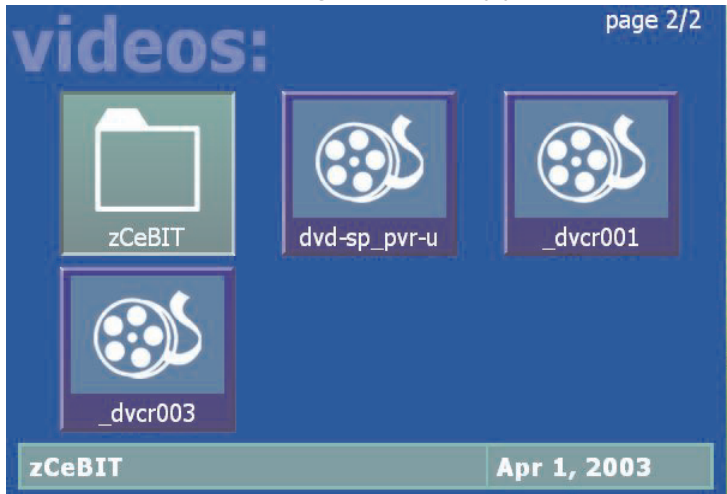
Videos menu

The Videos menu will show MPEG-1, MPEG-2 or DivX videos which are located in selected directories on the PC. You can play a video file (indicated by the **video icon** or the **video thumbnail**) by either clicking the **“Play”** button or the **“OK”** button on the remote control.

Types of video files supported are MPEG1 and MPEG2, from less than 1 Mbit/sec up to 10 Mbits/sec, or DivX movies. The maximum data rate might be limited by your local area network speed.

To navigate to a sub menu (indicated by the ‘folder’ icon), cursor to the folder by using the arrow buttons on the Remote control and click the **“OK”** button on the remote.

If you click the **“Menu”** button on the remote control, a pop up menu will appear which will allow the sorting of the videos by date or name, or a random order.



To return to the Video menu while watching a video, click the **“Stop”** button on the remote control.

To fast forward through a video, click the remotes **“Fast forward”** button.

To pause the video while playing, click the **“Pause”** button on the remote.

To rewind through the video, click the **“Rewind”** button on the remote.

While playing videos, the audio volume can be adjusted through the **Vol+** and **Vol -** keys.

Tips for playing DivX videos

- simultaneous playback of DivX videos are not possible from multiple MediaMVPs
- DivX playback requires a minimum 1.8 Gigahertz Pentium4 processor or faster in your PC. If your PC is too slow to "transcode" the DivX video at its current frame size, video will stutter or you will lose lip synch as you watch your videos. One solution is to play smaller frame size DivX videos. For example, if you see jerky video or stuttering audio with 640x480 DivX videos, try playing 320x240 size DivX videos instead.