

802.11a/b Wireless LAN Card

User's Manual

Information in this document is subject to change without notice. No part of this document may be reproduced or transmitted in any form or by any means, electronic or mechanical, for any purpose, without the express written permission of the seller.

The seller provides this documentation without warranty, term, or condition of any kind. The seller may make improvements or changes in the product(s) and/or the program(s) described in this documentation at any time.

Atheros and the Atheros logo are registered trademarks of Atheros Communications, Inc. Cisco, Cisco Systems, and the Cisco Systems logo are registered trademarks of Cisco Systems, Inc. and/or its affiliates in the U.S. and certain other countries. All other trademarks mentioned in this document are the property of their respective owners.

© 2002 All rights reserved.

Contents

Chapter 1 Introduction	1
Wireless LAN Basics	2
Local Area Network (LAN)	2
Wireless Network Topologies	3
Chapter 2 Installing the Driver and Utility Software	5
System Requirements	6
Installing Wireless LAN Driver and Software.....	6
Chapter 3 Station Configuration	11
Accessing the Atheros Configuration Utility	11
Note to Windows XP Users.....	12
Basic Configuration for Ad Hoc Network	12
Basic Configuration for Infrastructure Network.....	13
Edit the Security Tab	14
Edit the Advanced Tab	15
To Connect to an Existing Network	17
To Modify a Configuration Profile	17
To Remove a Configuration Profile	17
To Switch to a Different Profile	17
Chapter 4 Checking Status or Statistics	19
Link Status	19
Advanced Link Status	21
Driver Information	22
WLAN Status	22
Statistics	23
Tools	24
Chapter 5 Tools	27
Changing Display Settings	27
Select the Country Code	27
Status Monitor Tray Icon	28
Chapter 4 Uninstalling the Wireless LAN Card	31

Chapter 1 Introduction

This Wireless LAN Card is an IEEE 802.11a/b dual band combo radio solution. The dual band design provides backward compatibility with 802.11b standard compliant devices and forward compatibility to new wave of 802.11a devices. Now users have the flexibility to connect to either the legacy 802.11b or higher-speed 802.11a network effortlessly.

The Wireless LAN Card design is based on Atheros WLAN chipset. It supports 802.11a and 802.11b standard to provide maximum data rates of 54 Mbps and 11 Mbps respectively. Based on Atheros Turbo Mode™, the 802.11a transfer speed can be extended up to blazing 108 Mbps. Additionally, the Wireless LAN Card provides a comprehensive security suit including WEP encryption, Atheros Advanced Encryption Standard (AES) and 802.1x authentication.

Wireless LAN Basics

This section conations some Wireless LAN basics to help you better understand how the product work together to create a wireless network.

Local Area Network (LAN)

Simply put, a LAN is a network that exists in a relatively limited area. A network is two or more computers connected together sharing files and peripheral devices such as printers.

The Wireless LAN Card allows you to interact with other computers without having to run cables normally associated with networks. This lets you move your computer around while staying connected to your network.

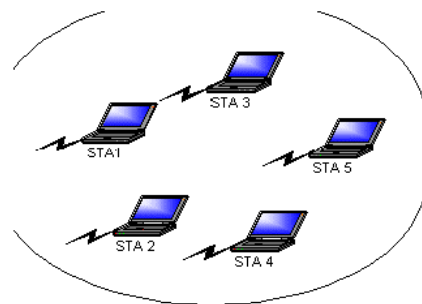
There are two ways to use the Wireless LAN Card. One way is to connect directly to one or more Wireless LAN Card equipped computers, forming an Ad Hoc wireless network. The second way is to connect to an Access Point that gives you access to an existing wired LAN, forming an Infrastructure wireless network.

Wireless Network Topologies

The 802.11 standard defines two modes: Infrastructure mode and Ad Hoc mode.

Ad Hoc Network

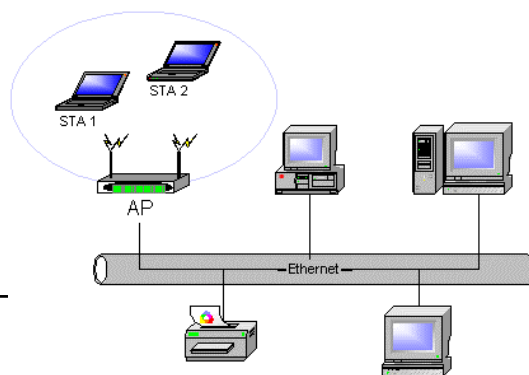
An Ad Hoc network offers peer to peer connections between wireless stations that are in range of each other. The stations communicate directly with each other without using an Access Point or any connection to a wired network. This mode is useful for quickly and easily setting up a wireless network anywhere that a wireless infrastructure does not exist or is not required for services. In an Ad Hoc network, all wireless stations must have the same SSID, channel and WEP keys (if enabled) to communicate.



Infrastructure Network

The infrastructure network uses an access point (or several access points) as a gateway, linking the wireless network to a wired LAN. As a result, portable workstations or desktops on your wireless network have access to all of the features of your wired LAN including e-mail, Internet access, network printers and files server.

An Infrastructure wireless network consists of at least one Access Point connected to the wired network infrastructure and a set of wireless end stations. The AP acts as a gateway, linking the wireless network to a wired LAN. As a result, wireless stations have access to all of the features of your wired LAN including e-mail, Internet, network printers and files server access.



Roaming Between Multiple APs

For large environments, multiple APs can be implemented to extend the wireless service coverage area for seamless wireless access. It allows wireless clients to roam from one AP to another while maintaining the wireless connectivity at all times.

In a roaming network, all APs and wireless clients must have the same Service Set Identity (SSID) and security setting (if enabled). Alternatively the mobile station may use an SSID of “any” to associate with any available AP, regardless of the AP’s SSID.

Chapter 2 Installing the Driver and Utility Software

This chapter describes the first-time installation for the driver and software for the Wireless LAN Card. Proper driver installation is to allow the device to operate on your host computer while the utility software, a Windows program, is to help you configure and monitor your Wireless LAN Card.

Note: As this Wireless LAN Card is an embedded solution, your computer is probably shipped with its driver and software properly installed. If this is the case, ignore this chapter and proceed with configuration steps in next chapter.

In case you need to re-install the driver and software for any reason, we recommend that you remove any previously installed driver and software from your system first. Refer to the section “Chapter 4 Uninstalling the Wireless LAN Card” for the instruction on how to remove previous driver releases.

System Requirements

To use the Wireless LAN Card, your computer must meet the following minimum requirements:

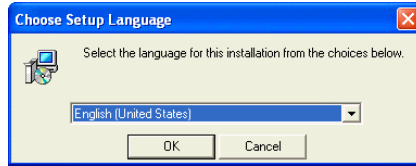
- Windows 98[®]/Me[®]/2000[®]/XP[®]
- 32 MB memory or greater
- 300 MHz processor or higher

Installing Wireless LAN Driver and Software

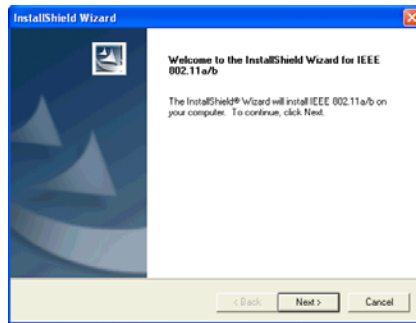
If your operation system has not been installed with the Wireless LAN Card driver, the Windows Plug-and-Play capability will automatically detect the new device (e.g., Ethernet Controller) and display the wizard requesting for drivers. Click **Cancel** to bypass the wizard screen and then take out the steps below.

1. Close all Windows programs that are running.
2. Insert the provided Software Utility CD into your CD-ROM drive. Run **Setup.exe** from the Software Utility CD to launch the setup program.

3. Select the language for this installation.



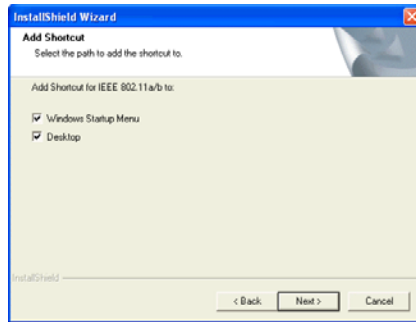
4. Click **Next** to continue.



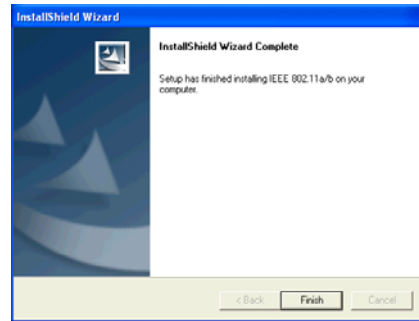
5. Click **Yes** to accept the license agreement.



6. Select the path to add the shortcut to and then click **Next**.



7. Click **Finish** to complete the installation.



Depending on your operating system, following situation may occur during the installation:

- For Windows 2000: If you are prompted with one or a couple of **Digital Signature not Found** alarm messages, just click **Yes** to continue with the installation.
- For Windows XP: When **Found New Hardware Wizard** appears, have **Install the software automatically** selected and follow the on-screen instructions to proceed. If digital signature message appears, just click **Continue Anyway**.

Now you are done with the installation procedure. Proceed to next chapter to configure or fine-tune your Wireless LAN Card settings.

Chapter 3 Station Configuration

The configuration of the Wireless LAN Card is done through the **Atheros Client Utility (ACU)**. The utility also includes a number of tools to display current statistics and status information. The **Atheros Client Utility** screen pops up with six available tabs: **Link Status**, **Station Configuration**, **Driver Information**, **WLAN Status**, **Statistics** and **Tools**. This chapter will focus on the **Station Configuration** tab to guide you through the configuration items. For description of other tabs, please refer to the “Chapter 4 Checking Status or Statistics”.

Accessing the Atheros Configuration Utility

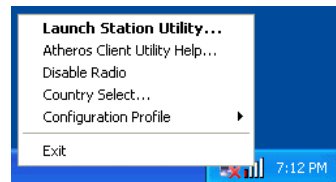
You can access the **Atheros Client Utility** by any of the following methods:

- Double-click the **Atheros Client Utility** tray icon on the system tray



Note: If the tray icon is not launched, you can manually start the utility tray icon by selecting **Start > Programs > IEEE 802.11 a/b > ACU** or double-clicking the **ACU** icon on the desktop (if any).

- Right-click the tray icon and select **Launch Station Utility...** from the context menu.



After launching the **Atheros Client Utility**, click the **Station Configuration** tab to start your configuration. You can create multiple profiles to reflect specific WLAN settings for each place you may roam. See the appropriate subsection as required.

- Basic Configuration for Ad Hoc Network
- Basic Configuration for Infrastructure Network
- To Connect to an Existing Network
- To Modify a Configuration Profile
- To Remove a Configuration Profile
- To Switch to a Different Profile

Note to Windows XP Users

Windows XP provides built-in support for wireless networks. By default, your wireless adapter is controlled by Windows XP Wireless Configuration Manager. But you can still manage your wireless adapter through the **Atheros Client Utility**. Configuration in either utility takes effect in another.

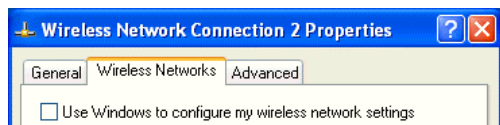
If you want to disable the Windows XP Wireless Configuration Manager and have your device controlled only by the **Atheros Client Utility**, proceed as follows:

1. Double-click the Windows XP wireless tray icon and then click **Advanced** (or **Properties**) > **Wireless Networks**.

Windows XP wireless icon — Atheros wireless tray icon



2. On the **Wireless Networks** tab, uncheck the **Use Windows to configure my wireless network settings** box and click **OK**.



If you need to revert back to using Windows XP Wireless Configuration Manager, just go to the **Wireless Networks** tab and check the **Use Windows to configure my wireless network settings** box and click **OK**.

Note: If your device is controlled by the Windows XP Wireless Configuration Manager, the utility will display related message on the bottom of the **General** tab of **Network Configuration Settings** dialog box.

Basic Configuration for Ad Hoc Network

To add a new Ad Hoc mode configuration profile, click **New** on the **Station Configuration** tab. When the **Network Configuration Settings** dialog box displays, edit the **General** tab. The configuration items on the **General** tab are described as below.

Configuration Name: Enter a unique name to identify this network setting. Configuration names are not case sensitive.

Network Name (SSID): It is the name of the Wireless LAN group you want to participate in. This field has a maximum limit of 32 characters. A network name is **mandatory** for Ad Hoc mode. The SSID for all stations in a single Ad Hoc network must be the same.

Network Type: Select **Ad Hoc**.

Power Save Mode: This feature is not applicable to Ad Hoc mode network.

If WEP encryption is enabled in the Ad Hoc network you are going to connected, proceed to configure the **Security** tab as described in “Edit the Security Tab”.

If you have finished the required setting, click **OK** and you will return to the **Station Configuration** tab. Select the profile you have just created and click **Activate** to have the setting take effect. Immediate connection status will be displayed in the **Details** group and indicated by graphic indication on the left.

Basic Configuration for Infrastructure Network

To add a new Infrastructure configuration profile, click **New** on the **Station Configuration** tab. When the **Network Configuration Settings** dialog box displays, edit the **General** tab. The configuration items on the **General** tab are described as below.

Configuration Name: Enter a unique name to identify this network setting. Configuration names are not case sensitive.

Network Name (SSID): It is the name of the Wireless LAN group you want to participate in. This field has a maximum limit of 32 characters.

In an Infrastructure network, the SSID must match on AP and all the wireless clients to communicate with each other.

Note that under Access Point mode, if the **Network Name (SSID)** field is left blank or filled in with the special SSID name “**any**”, your Wireless LAN Card will connect to the first compatible and “open” AP with the best signal strength within the connection range. It allows your Wireless LAN Card to wander across networks with different SSID.

Network Type: Select **Access Point**.

Power Save Mode: This feature reduces power consumption by the Wireless LAN Card to extend the battery life of your computer. The options include **Off**, **Normal** and **Maximum**.

- **Off** – The power management is disabled and the card consumes full power from the computer.
- **Normal** – The driver turns off power to the adapter for brief periods over briefly-spaced time intervals.
- **Maximum** – The driver turns off power to the adapter for longer periods over more widely spaced time intervals.

The guideline for choosing **Normal** or **Maximum**:

- The card wakes up more often and responds sooner to network requests in Normal mode than in Maximum mode.
- Maximum mode consumes less power than Normal mode.

If WEP encryption is enabled in the Infrastructure network you are going to connected, proceed to configure the **Security** tab as described in “Edit the Security Tab”.

If you have finished the required setting, click **OK** and you will return to the **Station Configuration** tab. Select the profile you have just created and click **Activate** to have the setting take effect. Immediate connection status will be displayed in the **Details** group and indicated by graphic indication on the left.

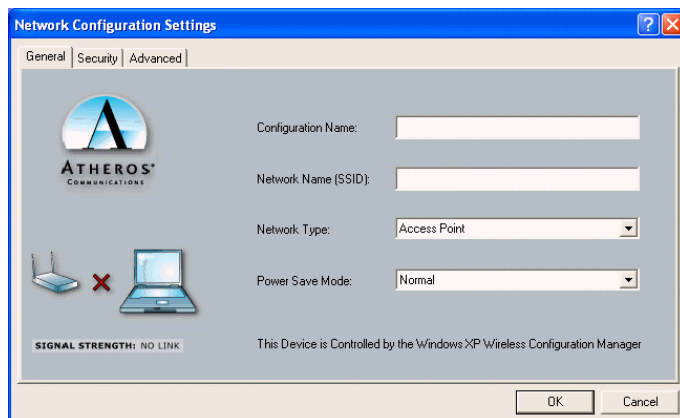


Figure 3-1 General Settings for Infrastructure Mode

Edit the Security Tab

The **Atheros Client Utility** provides three encryption types: **Dynamic Security**, **Static Keys** and **Disable encryption**. You should contact your network administrator about the encryption type.

Use Dynamic Security (LEAP, 802.1X, etc.)

The **Atheros Client Utility** supports LEAP (Cisco-EAP Wireless) and 802.1X authentication type where login and mutual authentication between a wireless client and a RADIUS server is required. Client communication to the LAN through the AP will remain constant until client logs off.

If you want to connect to a network using Cisco LEAP, make sure to check the **Enable LEAP** option and enter the user name and password used to log in to the network in the provided fields.

Use Static Keys

Selecting Encryption Types

For static keys, the Wireless LAN Card supports two encryption types: **wired equivalent privacy (WEP)** and **advanced encryption security (AES)**. While WEP is universally supported and commonly used, AES provides a higher level of security because frames encrypted with AES are more difficult to decipher without knowing the key. To use AES, you must specify a unique key (refer to description below).

Note: AES is not supported in Ad Hoc mode, because Ad Hoc mode does not support unique keys.

Encryption type is set on both the AP and the station. The station and AP negotiate and attempt to use AES before exchanging data packets. By default, the station is set to auto and attempts to use AES. It will only use WEP if the AP supports or is configured for WEP only.

Configuring the Encryption Keys

To use static keys, enable the **Use Static Keys** option on the **Security** tab and click **Define Static Encryption Keys** to set the encryption keys. Then configure the fields below:

Key Entry Method: Select the method to enter the key. If **Hexadecimal** is selected, only digits 0-9 and letters a-f, A-F are allowed. If **ASCII Text** is selected, you can enter alphanumeric characters.

Key Length (bits): Defines the length for each encryption key. Key length varies according to the WEP type. As the Key Length is changed, the number of available characters in the field is changed automatically. If an already entered key is too long, the key is automatically truncated to fit. If the key length is increased again, the field does not automatically update to its previous value.

Unique Key: To enable security using AES, you must define an unique encryption key. Otherwise you may leave it blank.

Shared Keys (First to Fourth): Defines a set of shared encryption keys for network configuration security. At least one **Shared Key** field must be populated to enable security using a shared key.

Note: All encryption key fields are displayed only when initially entered. On subsequent entry into the security property page, the field are masked.

Select Default Encryption: Selects the default encryption keys to be used (either **Unique** or **Shared**). You are only allowed to select a Unique key, or a shared First, Second, Third, or Fourth key whose corresponding field has been completed.

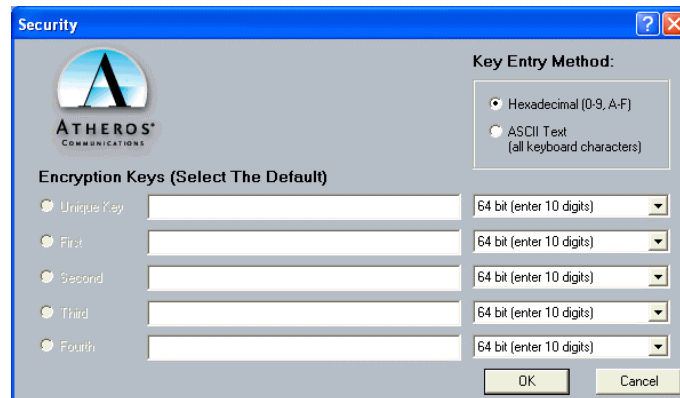


Figure 3-2 Static Keys Security Settings

Edit the Advanced Tab

Scan Mode: Specifies the scan type as **Passive** or **Auto**. The scan mode is set by the country code, with most regions using an active scan mode. To override an active setting, click **Passive** here.

802.11b Preamble: The preamble is part of the IEEE 802.11b physical layer specification. All 802.11b devices are mandatory to support the long preamble format, but may optionally support the short preamble. This Wireless LAN Card supports the short preamble. The default **Short & Long** option allows to communicate with other 802.11b devices which support short preamble to boost the throughput. If your device is having trouble to communicate with other 802.11b devices, then you may try to select the **Long Only** option.

QoS: Specifies whether to enable the Wireless LAN Card to cooperate in a network using Quality of Service.

Transmit Power Level: Specifies the transmit power as required.

Wireless Mode: Specifies the wireless operation mode. The Wireless LAN Card will scans the radio signals only in the base band you specified.

- **5 GHz 54 Mbps:** Specifies whether to use 54 Mbps mode for 802.11a radio space.
- **5GHz 108 Mbps:** Specifies whether to enable turbo mode for 802.11a radio space. If enabled, the WLAN card scans channels for 802.11a turbo modes.
- **2.4 GHz 11 Mbps:** Specifies whether to use 11 Mbps mode for 802.11b radio space.

You can use the **Wireless Mode** setting to control whether to roam between 802.11a and 802.11b networks or just roam in a single network.

To roam between 802.11a and 802.11b network...

To have your wireless station automatically roam between 802.11a and 802.11b networks, select **2.4 GHz 11Mbps** and one or both 5 GHz modes as required.

To roam in a single 802.11a or 802.11b network...

If you want your wireless station to roam only in 802.11a or 802.11b network, only select the corresponding band as the wireless mode.

Wireless Mode When Starting Ad Hoc Network: Only effective when connection to an Ad Hoc network. Specifies a band to establish an Ad Hoc network if no matching SSID is found after scanning all available modes.

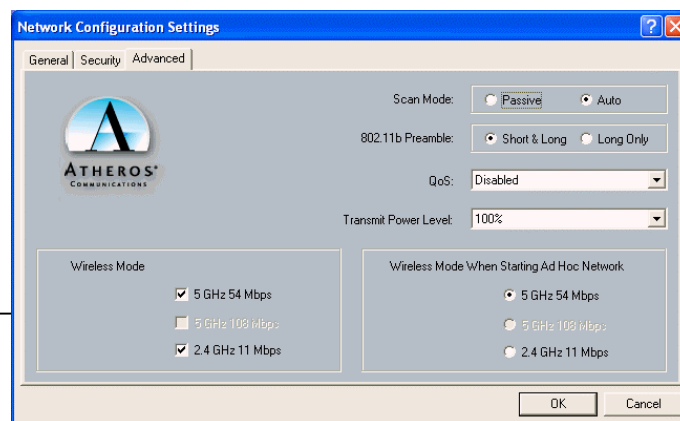


Figure 3-3 Advanced Network Configuration Settings

To Connect to an Existing Network

The **Athros Client Utility** provides a station listing of all available APs and Ad Hoc networks on the WLAN Status tab.

If a configuration profile exists for an available network, you can double-click on the network name (SSID) to connect an available network.

If no configuration profile exists for an available network, double-clicking the network name (SSID) will bring out the **Network Configuration Settings** dialog box for you to create a configuration profile for that network.

To Modify a Configuration Profile

To modify a configuration profile, select the configuration from the list of profiles and click the **Modify** button.

To Remove a Configuration Profile

To remove a configuration profile:

1. Select the profile to remove from the **Profile** list on the **Station Configuration** tab.
2. Click the **Remove** button.

To Switch to a Different Profile

To switch to another configuration profile:

1. Select the profile to be used from the **Profile** list on the **Station Configuration** tab.
 2. Click the **Activate** button.
-

Chapter 4 Checking Status or Statistics

The **Atheros Client Utility** includes a number of tools to display current statistics and status information. These tools can be accessed via the corresponding tabs of the **Atheros Client Utility**. This chapter will describe these tabs except the **Station Configuration** tab.

Link Status

The **Link Status** tab of the **Atheros Client Utility** contains general information about the program and its operations.

The following table describes the items found on the Link Status screen.

Screen Item	Description
Wireless Mode	Displays the wireless mode: <ul style="list-style-type: none">• 5 GHz 54 Mbps (802.11a)• 5 GHz 108 Mbps (802.11a Atheros Turbo Mode)• 2.4 GHz 11 Mbps (802.11b)
Configuration Name	The name of the current configuration.
Link Status	Shows whether the station is connected to a wireless network.
Transmit Rate	The current packet transmit rate (Mbps).
Receive Rate	The current packet receive rate (Mbps).
Network Type	Displays if the adapter is connected to an Access Point or Ad Hoc network.
Security Mode	Displays the current security mode: <ul style="list-style-type: none">• WEP – use only WEP encryption.• AES (Advanced Encryption Security) – only associate with Access Points that supports AES encryption.• Auto – Allows the Wireless LAN Card and the Access Point to automatically negotiate the encryption.• Off – No encryption is used.

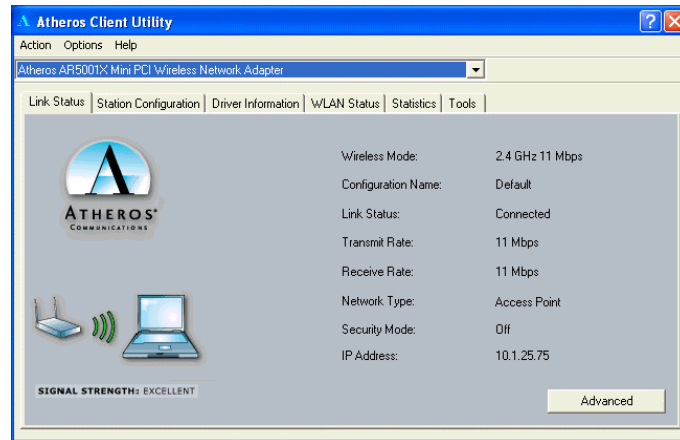


Figure 3-4 Link Status

Screen Item	Description
IP Address	Displays the IP address of the station.

Advanced Link Status

You can view advanced information about the program and its operations by clicking the **Advanced** button on the **Link Status** tab.

The following table describes the items found on the **Advanced Link Status** screen.

Screen Item	Description
Country	The regulatory domain of the network. You can configure the country by selecting Tools > Country Select .
Transmit Power Level	The transmit power level.
Network Name (SSID)	The wireless network name.
QoS	Shows whether the station is enabled to cooperate in a network using Quality of Service.
Power Save Mode	The power management options. Power management is disabled in ad hoc mode.
Frequency	The frequency the station is using.

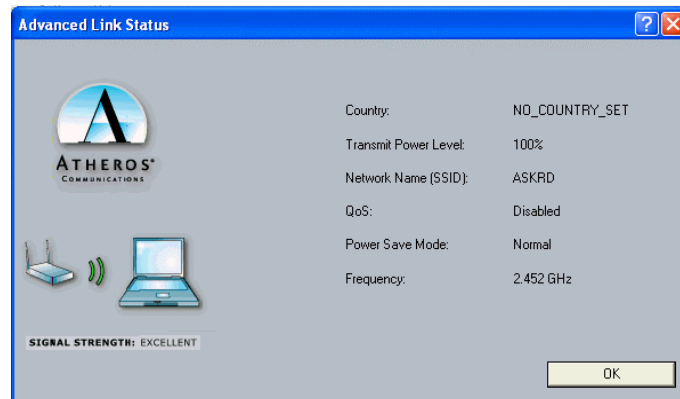


Figure 3-5 Advanced Link Status

Driver Information

The **Driver Information** tab of the **Atheros Client Utility** contains general information about the network interface card (NIC) and the network driver interface specification (NDIS) driver.

The following table describes the items found on the **Driver Information** screen.

Screen Item	Description
Card Name	The name of the NIC.
MAC Address	The station's MAC address. It is configured at the factory.
Driver	The location of the NDIS driver.
Driver Version	The NDIS driver version.
Driver Date	Date of the NDIS driver release.

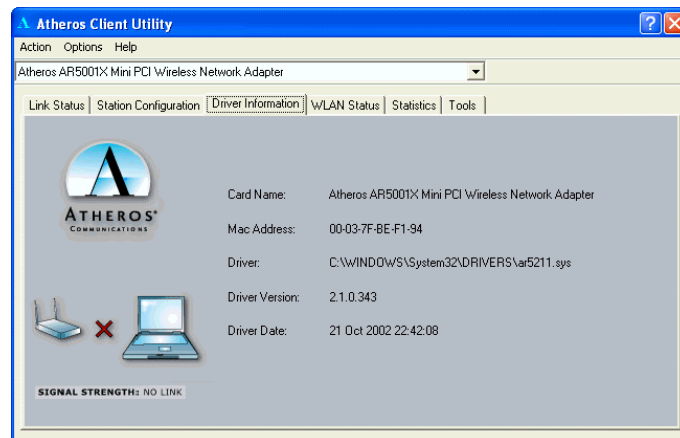


Figure 3-6 Driver Information

WLAN Status

The **WLAN Status** tab of the **Atheros Client Utility** displays the information about the network you have joined. It also contains information about the available access point and Ad Hoc networks. The **Available Access Points (APs) and Ad Hoc Networks** list describes the available APs and Ad Hoc networks.

If no configuration profile exists for an available network, you can double-click on the network name to create a configuration profile for that network.

If a configuration profile exists for an available network, you can double-click on the network name to connect an available network.

The following table describes the items found on the **WLAN Status** screen.

Screen Item	Description
Network Name (SSID)	The wireless network name (service set identification).
Signal Strength	The received signal strength indicator. Displays the signal strength in dB.
Wireless Mode	Displays the wireless mode.
Channel	The channel the station is using.
Frequency	The frequency the station is using.
Address (BSSID)	The network AP address (basic service set identification).

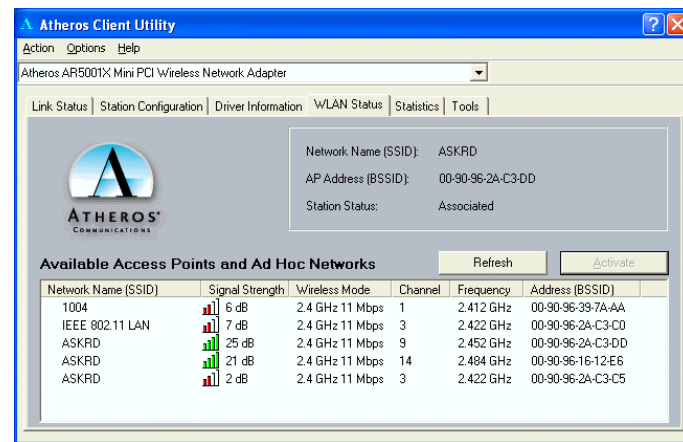


Figure 3-7 WLAN Status

Statistics

The **Statistics** tab of the **Atheros Client Utility** contains transmit and receive statistics.

The **Statistics** tab lists Uptime as well as the following transmit and receive statistics:

- Multicast frames transmitted and received
- Broadcast frames transmitted and received

- Unicast frames transmitted and received
- Total bytes transmitted and received

Click the **Advanced** button to also show receive and transmit statistical information for the following receive and transmit statistics:

- Beacons transmitted and received
- Frames transmitted and received OK
- Transmitted frame retried
- Frames dropped
- RTS frames sent
- Frames received with errors
- Encryption errors
- Duplicate frames received
- CTS frames received
- Authentication rejects
- Association rejects

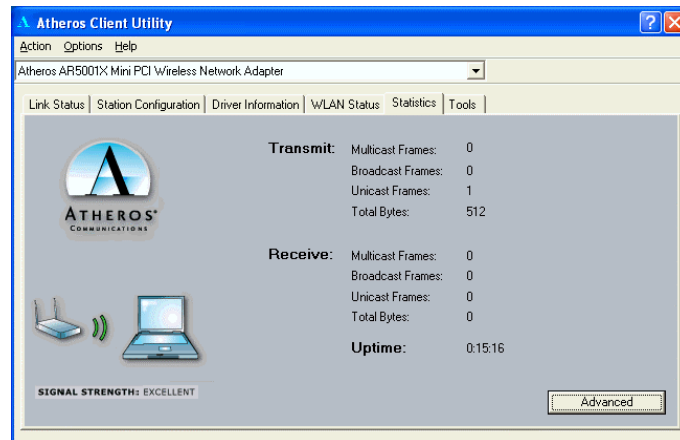


Figure 3-8 Statistics

Tools

The **Tools** tab provides the following functions:

Screen Item	Description
Radio Enable/Disable	Enable or disable the RF Signal.
Country Select	Open the Country Code Selector to select the country where the Wireless LAN Card is using.
Enable/Disable Tray Icon	Enable or disable the tray icon.

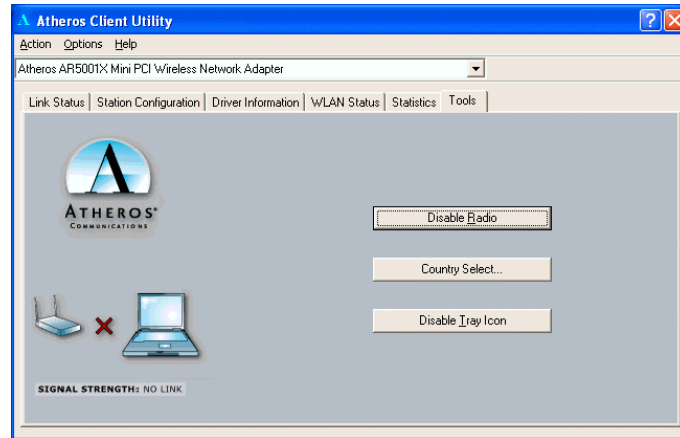


Figure 3-9 Tools

Chapter 5 Tools

Changing Display Settings

To change the display settings, choose **Options > Settings** from the **Atheros Client Utility** menu. The display settings dialog box contains tools to set these parameters:

Signal Strength Display Units: Sets the units used when displaying signal strength: percentage or decibels relative to one milliwatt (dBm).

Refresh Interval: Sets the display refresh interval in milliseconds (ms).

Data Display: Sets the display to cumulative or relative.

- **Cumulative:** Displays statistical data collected from the beginning of driver load.
- **Relative:** Displays the change (delta) in statistical data since the last update.

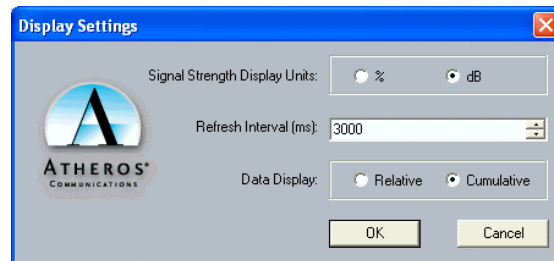


Figure 3-10 Display Settings

Select the Country Code

The **Country Code Selector** is a tool provided to allow users to switch to different country codes. The Wireless LAN Card has EEPROM locations allocated to store country code information. The selections available include the United States, Canada, Europe, Japan and so on.

When the country code is changed, the NDIS driver scans only the legal frequency channels allowed in those countries.

In most cases your Wireless LAN Card is shipped with proper country setting. If you need to change the country code:

1. Open the **Country Code Selector** tool by selecting the **Country Select** button on the **Tools** tab or selecting **Action** menu and clicking **Country Select**.
2. From the **Country** drop-down menu, choose the country to switch to.

3. Click **Yes** to continue.
4. The country selection takes effect immediately. Use the **Atheros Client Utility** to verify the selected country by looking at the **Advanced** information on the **Link Status** tab.



Figure 3-11 Country Code Selector

Status Monitor Tray Icon

The **Atheros Client Utility** tray icon allows you to easily and quickly monitor your wireless connection status.

When the RF signal of the Wireless LAN Card is disabled, the icon would appear as follows:



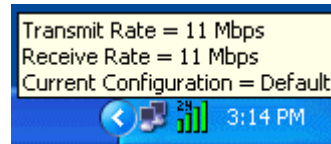
displays the signal strength by indication of bar graph. The tray icon shows the signal strength using colors and the received signal strength indication (RSSI).



The number (2.4 or 5) indicates the current wireless base band. The colors and the signal strength are defined as follows:

Color	Quality	RSSI (dBm)
Green	Excellent	20 dBm +
Yellow	Good	10-20 dBm
Orange	Poor	<10 dBm
Red	No Link	No connection

Hold the mouse cursor over the tray icon to display transmit and receive speed and the current configuration profile name.



Right-click on the tray icon to:

Screen Item	Description
Launch Station Utility	Launch the Atheros Client Utility . Use the Atheros Client Utility to configure the profile or view status and statistics information.
Atheros Client Utility Help	Launch the Atheros Client Utility Help .
Enable/Disable Radio	Enable or disable the RF Signal.
Country Select	Open the Country Code Selector to select the country where the Wireless LAN Card is using.
Configuration Profile	Display a list of available configurations. Double-click a configuration to switch to edit it, or add a new configuration profile.
Exit	Exit the Atheros Client Utility application.

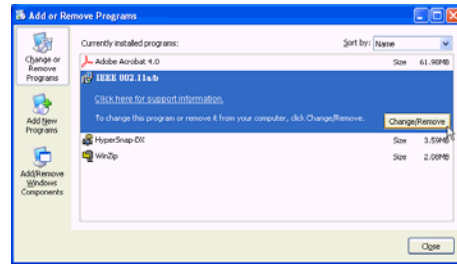
Chapter 4 Uninstalling the Wireless LAN Card

Should you need to uninstall the Wireless LAN Card and its application software for any reason, please proceed as follows.

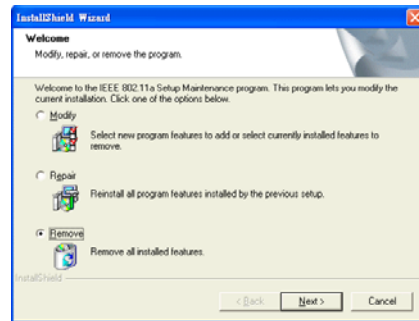
The uninstallation procedures are the same under Windows 2000 and XP. The graphics here assume a Windows XP environment.

1. Close all programs that are currently running.
2. Double-click the **Add/Remove Programs** (or **Add or Remove Programs** for Windows XP) icon under Control Panel.

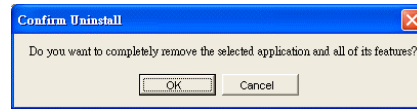
3. Highlight **IEEE 802.11a/b** from the list and then click **Change/Remove**.



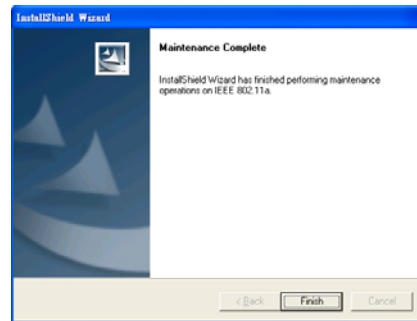
4. Select **Remove** and click **Next**.



5. When confirm message appears, click **OK**.



6. Click **Finish** and wait for the system to reboot to complete software uninstallation.



Federal Communication Commission Interference Statement

This equipment has been tested and found to comply with the limits for a Class B digital device, pursuant to Part 15 of the FCC Rules. These limits are designed to provide reasonable protection against harmful interference in a residential installation. This equipment generates, uses and can radiate radio frequency energy and, if not installed and used in accordance with the instructions, may cause harmful interference to radio communications. However, there is no guarantee that interference will not occur in a particular installation. If this equipment does cause harmful interference to radio or television reception, which can be determined by turning the equipment off and on, the user is encouraged to try to correct the interference by one of the following measures:

- Reorient or relocate the receiving antenna.
- Increase the separation between the equipment and receiver.
- Connect the equipment into an outlet on a circuit different from that to which the receiver is connected.
- Consult the dealer or an experienced radio/TV technician for help.

FCC Caution: Any changes or modifications not expressly approved by the party responsible for compliance could void the user's authority to operate this equipment.

This device complies with Part 15 of the FCC Rules. Operation is subject to the following two conditions: (1) This device may not cause harmful interference, and (2) this device must accept any interference received, including interference that may cause undesired operation.

**IMPORTANT NOTE:
FCC Radiation Exposure Statement:**

This equipment complies with FCC radiation exposure limits set forth for an uncontrolled environment. This equipment should be installed and operated with minimum distance 20cm between the radiator & your body.

This transmitter must not be co-located or operating in conjunction with any other antenna or transmitter.

This device is intended only for OEM integrators under the following conditions:

- 1) The antenna must be installed such that 20 cm is maintained between the antenna and users, and
- 2) The antenna should be integral if the end device is intended to be operated in 5.15 ~ 5.25GHz frequency range.

As long as 2 conditions above are met, further transmitter test will not be required. However, the OEM integrator is still responsible for testing their end-product for any additional compliance requirements required with this module installed (for example, digital device emissions, PC peripheral requirements, etc.).

IMPORTANT NOTE: In the event that these conditions can not be met (for example certain laptop configurations or co-location with another transmitter), then the FCC authorization is no longer considered valid and the FCC ID can not be used on the final product. In these circumstances, the OEM integrator will be responsible for re-evaluating the end product (including the transmitter) and obtaining a separate FCC authorization.

End Product Labeling

This transmitter module is authorized only for use in device where the antenna may be installed such that 20cm may be maintained between the antenna and users (for example: [This module will be bundling into Broadband product such as Wireless ADSL/Wireless Router/Wireless Cable Modem/ Notebook with antenna mounted around LCD panel](#)). The final end product must be labeled in a visible area with the following: “Contains TX FCC ID: H8NWLL220”.

Manual Information That Must be Included

The users manual for OEM integrators end users must include the following information in a prominent location “ IMPORTANT NOTE: To comply with FCC RF exposure compliance requirements, the antenna used for this transmitter must be installed to provide a separation distance of at least 20 cm from all persons and must not be co-located or operating in conjunction with any other antenna or transmitter”.

If the end product integrating this module is going to be operated in 5.15 ~ 5.25GHz frequency range, the warning statement in the user manual of the end product should include the restriction of operating this device in indoor could void the user’s authority to operate the equipment.