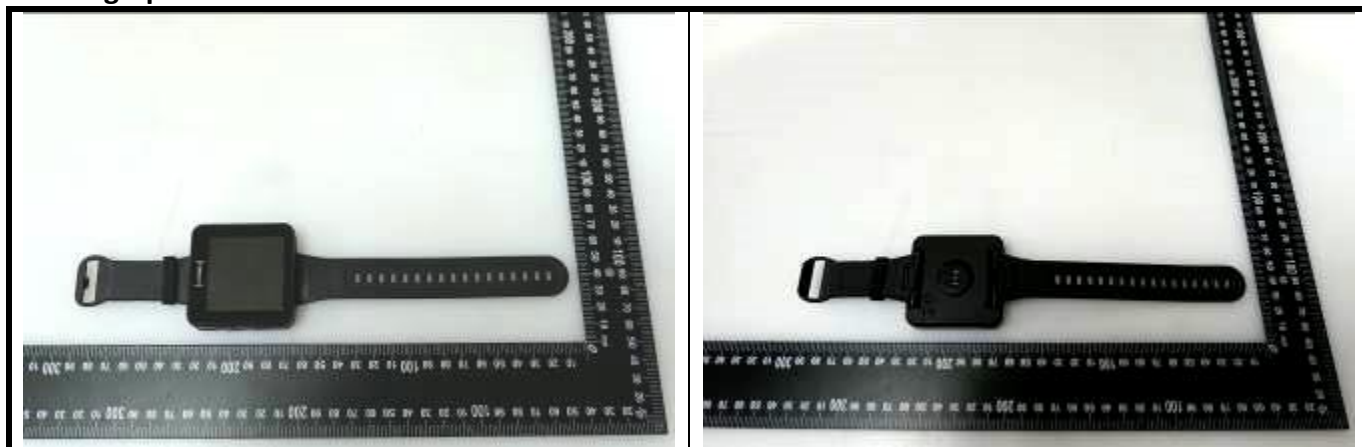


## SAR Test Report

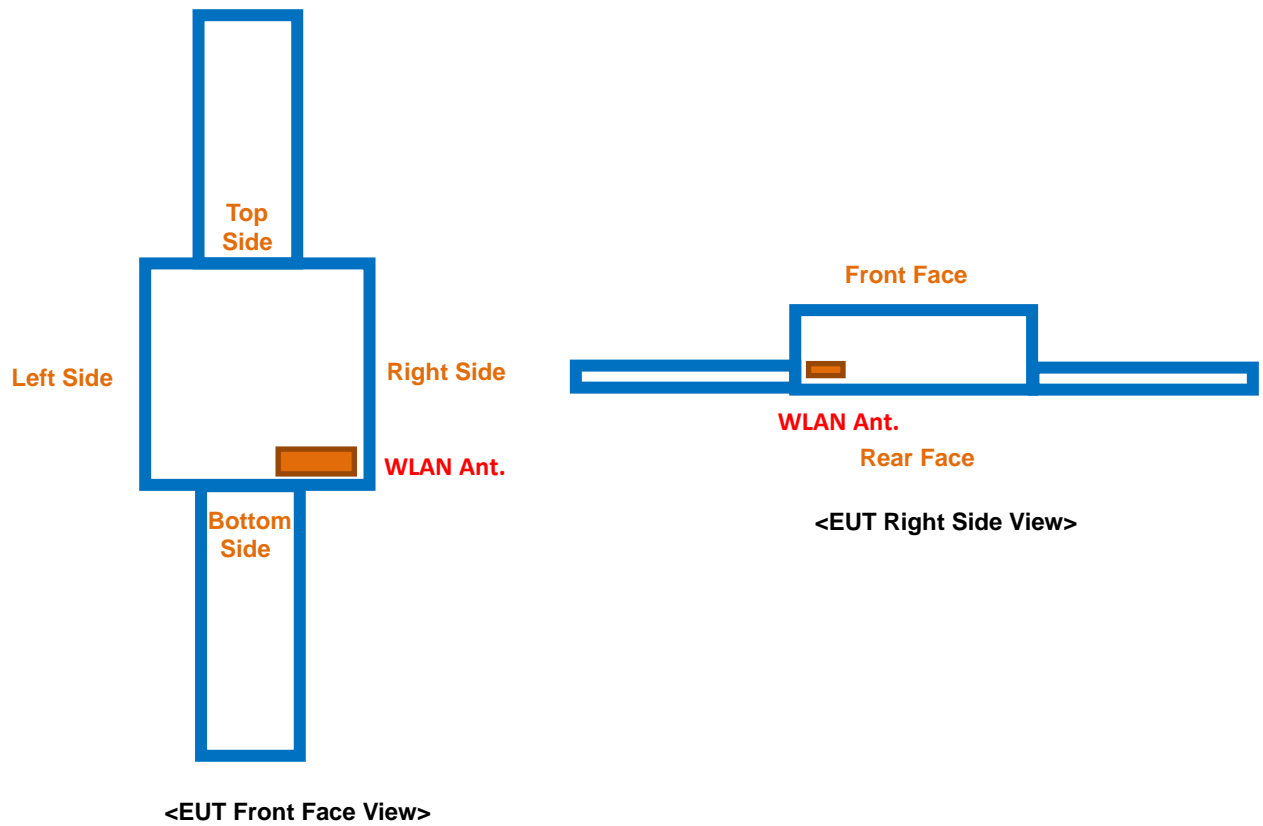
---

### <Photographs of EUT>



# SAR Test Report

## <Antenna Location>



The separation distance for antenna to edge:

Antenna	To Top Side (mm)	To Bottom Side (mm)	To Left Side (mm)	To Right Side (mm)	To Front Face (mm)	To Rear Face (mm)
WLAN Ant.	48.11	3.15	52.29	3.14	14.6	1.9

## <Photographs of SAR Setup>



Rear Face of EUT with 0 mm Gap