



Airgain®))

**Efficiency and Peak Gain**

NASDAQ:AIRG © Copyright 2021 Airgain, Inc. All Rights Reserved. PROPRIETARY AND CONFIDENTIAL | 专有和机密, Airgain 拥有解决方案版权

10

## Antenna Efficiency (%) – 2.4 GHz Wi-Fi Antennas

Frequency (MHz)	Ant5_2G4 (%)	Ant6_2G4 (%)	Ant7_2G4 (%)	Ant8_2G4 (%)
2400	65.4	65.3	68.9	70.4
2410	67.1	66.0	69.9	74.0
2420	69.0	67.7	72.1	77.7
2430	65.7	65.1	67.8	76.4
2440	64.2	64.0	66.1	76.8
2450	64.7	63.9	65.9	78.0
2460	64.0	63.1	64.3	77.7
2470	63.7	63.7	65.4	78.8
2480	63.3	62.6	66.0	79.1
2490	62.0	61.8	67.3	79.3
Average	64.9	64.3	67.4	76.8



## Antenna Efficiency (%) – 5 GHz Wi-Fi Antennas

Frequency (MHz)	Ant5_5G (%)	Ant6_5G (%)	Ant7_5G (%)	Ant8_5G (%)
5150	72.5	64.2	80.4	79.2
5200	68.0	60.7	77.2	76.8
5300	70.8	62.9	81.0	79.1
5400	65.1	60.7	77.4	75.4
5500	67.5	61.3	78.0	74.8
5600	66.9	61.1	76.1	75.1
5700	70.2	62.6	81.4	77.6
5800	65.0	60.3	76.0	75.9
5850	67.9	61.3	80.0	78.6
Average	68.2	61.7	78.6	77.0



## Antenna Peak Gain – 2.4 GHz Wi-Fi Antennas

Frequency (MHz)	Ant5_2G4 (dBi)	Ant6_2G4 (dBi)	Ant7_2G4 (dBi)	Ant8_2G4 (dBi)
2400	5.7	5.0	3.8	3.6
2410	5.7	5.0	4.0	3.8
2420	5.8	5.0	4.1	4.0
2430	5.6	4.7	3.5	4.2
2440	5.5	4.8	3.4	4.3
2450	5.6	4.9	3.2	4.3
2460	5.6	4.8	2.6	4.3
2470	5.6	5.2	2.7	4.4
2480	5.5	5.4	2.6	4.5
2490	5.4	5.4	3.0	4.5



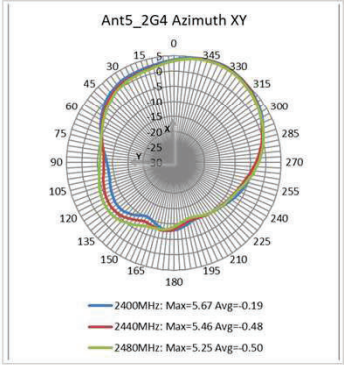
## Antenna Peak Gain – 5 GHz Wi-Fi Antennas

Frequency (MHz)	Ant5_5G (dBi)	Ant6_5G (dBi)	Ant7_5G (dBi)	Ant8_5G (dBi)
5150	5.9	5.6	4.1	5.3
5200	5.7	5.6	4.3	5.0
5300	5.8	5.3	4.6	4.1
5400	4.6	4.8	4.4	4.2
5500	4.1	4.2	4.4	3.8
5600	4.0	3.7	4.1	4.4
5700	4.6	5.1	4.4	4.4
5800	4.5	4.8	4.3	4.8
5850	5.1	5.1	4.5	5.4

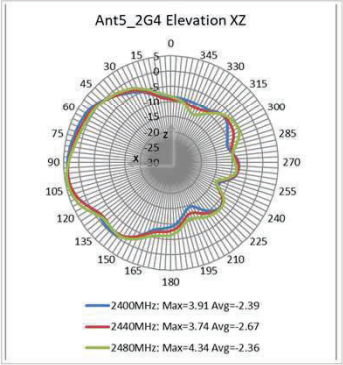


**Radiation Patterns**

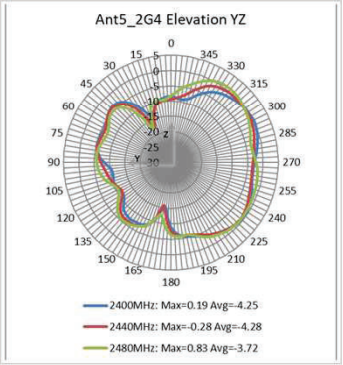
## 2D Patterns: Ant5\_2G4 at 2.44 GHz



Azimuth



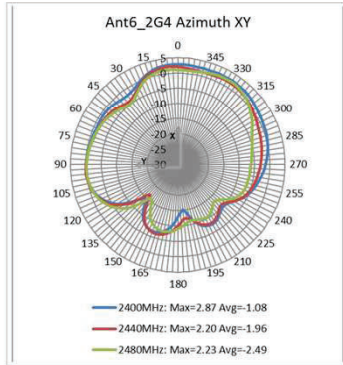
Side to Side Elevation



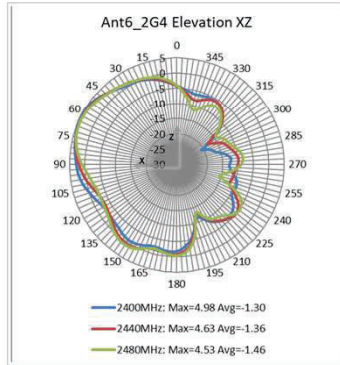
Front to Back Elevation



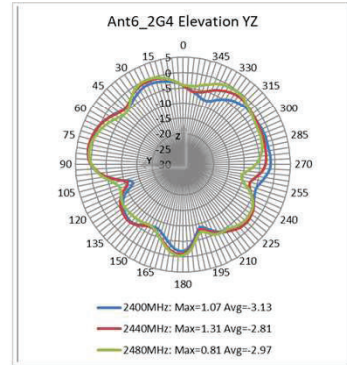
## 2D Patterns: Ant6\_2G4 at 2.44 GHz



Azimuth



Side to Side Elevation



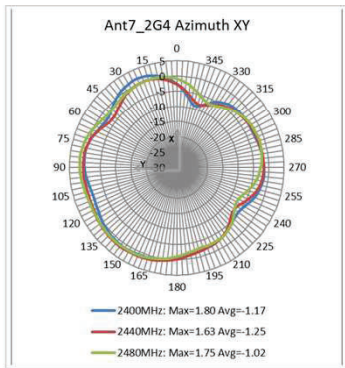
Front to Back Elevation



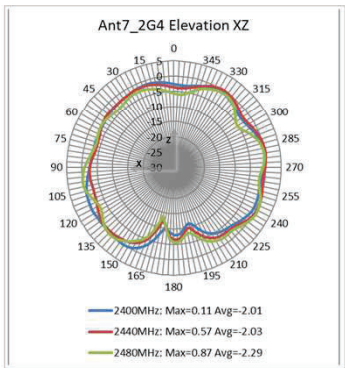
NASDAQ:AIRG © Copyright 2021 Airgain, Inc. All Rights Reserved. PROPRIETARY AND CONFIDENTIAL | 专有和机密, Airgain 拥有解决方案版权



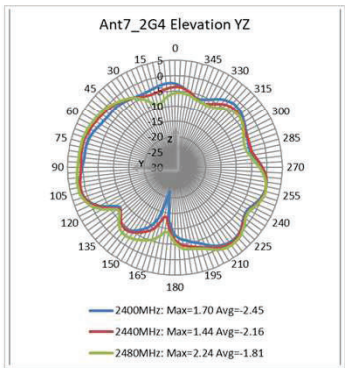
## 2D Patterns: Ant7\_2G4 at 2.44 GHz



Azimuth



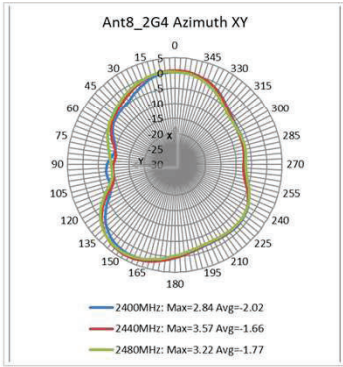
Side to Side Elevation



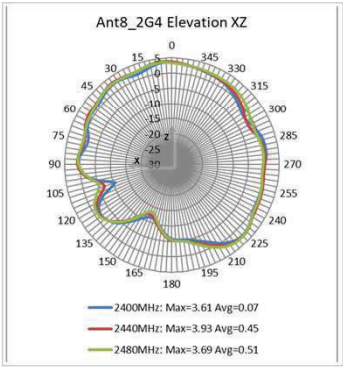
Front to Back Elevation



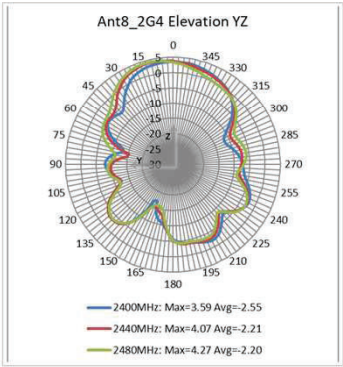
## 2D Patterns: Ant8\_2G4 at 2.44 GHz



Azimuth



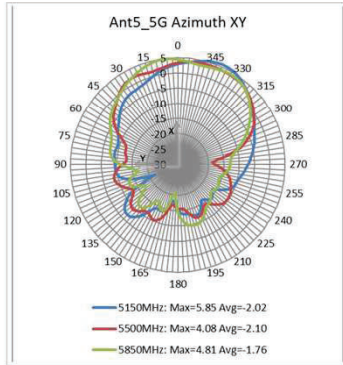
Side to Side Elevation



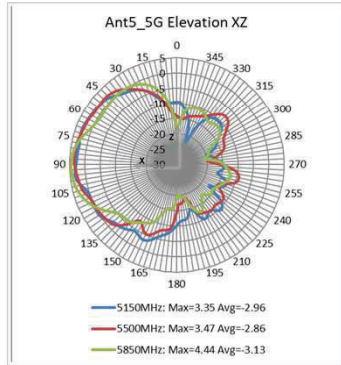
Front to Back Elevation



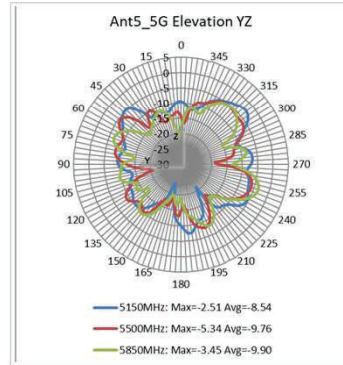
## 2D Patterns: Ant5\_5G at 5.5 GHz



Azimuth



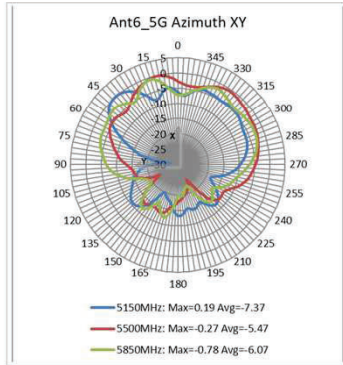
Side to Side Elevation



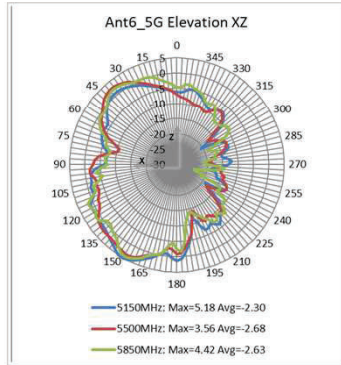
Front to Back Elevation



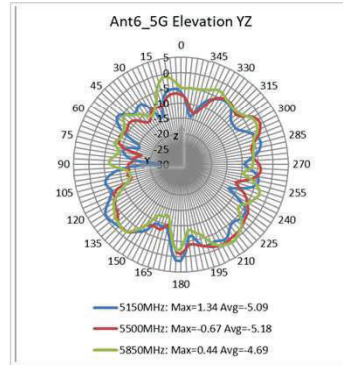
## 2D Patterns: Ant6\_5G at 5.5 GHz



Azimuth



Side to Side Elevation

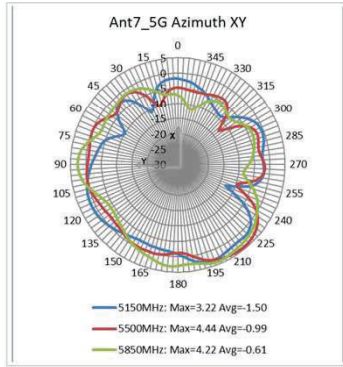


Front to Back Elevation

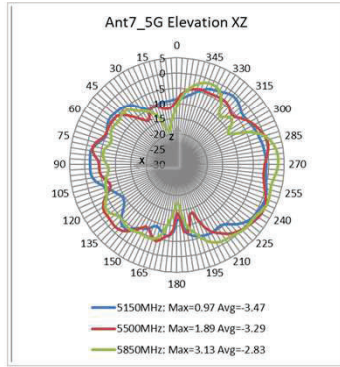


NASDAQ:AIRG © Copyright 2021 Airgain, Inc. All Rights Reserved. PROPRIETARY AND CONFIDENTIAL | 专有和机密, Airgain 拥有解决方案版权

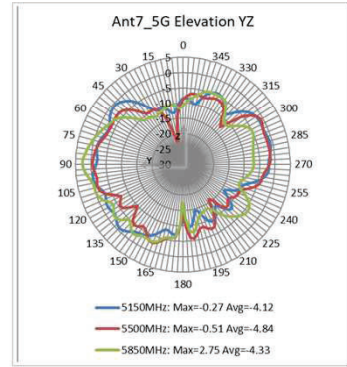
## 2D Patterns: Ant7\_5G at 5.5 GHz



Azimuth



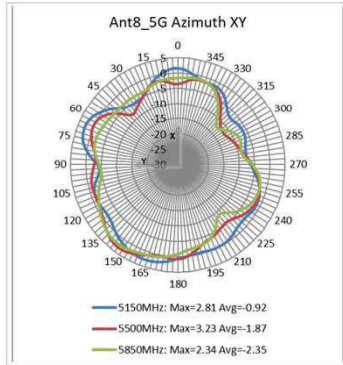
Side to Side Elevation



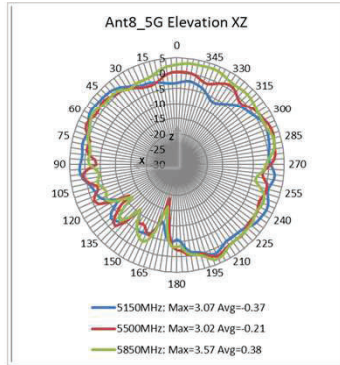
Front to Back Elevation



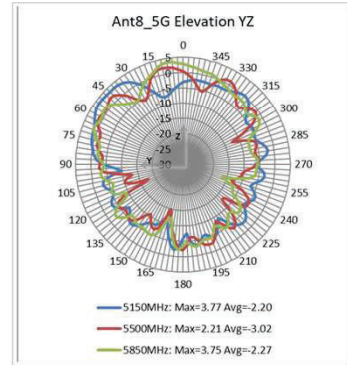
## 2D Patterns: Ant8\_5G at 5.5 GHz



Azimuth



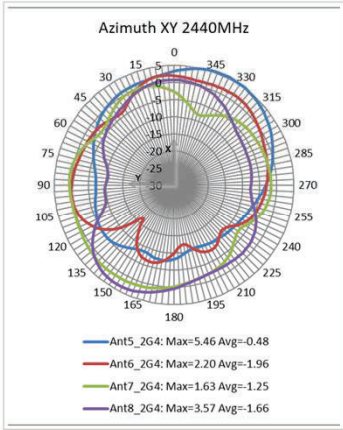
Side to Side Elevation



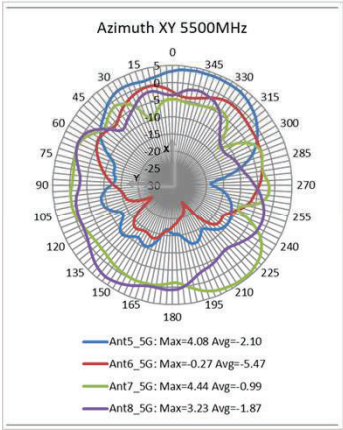
Front to Back Elevation



# System Coverage: Azimuth at 2.44 GHz & 5.5 GHz



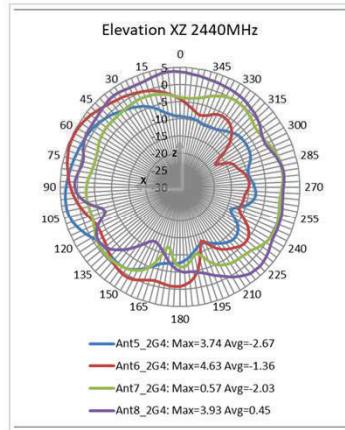
WiFi Antennas @ 2.44 GHz



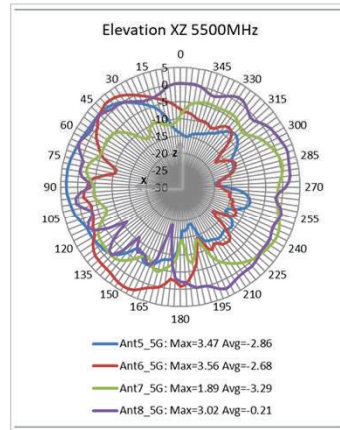
WiFi Antennas @ 5.5 GHz



## System Coverage: Side to Side Elevation at 2.44 GHz & 5.5 GHz



WiFi Antennas @ 2.44 GHz

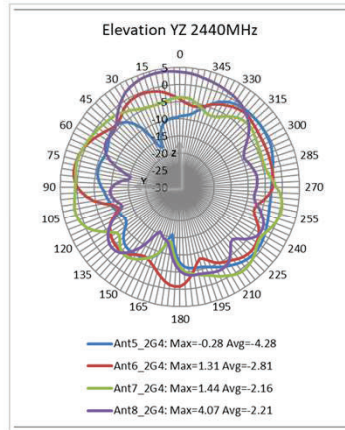


WiFi Antennas @ 5.5 GHz

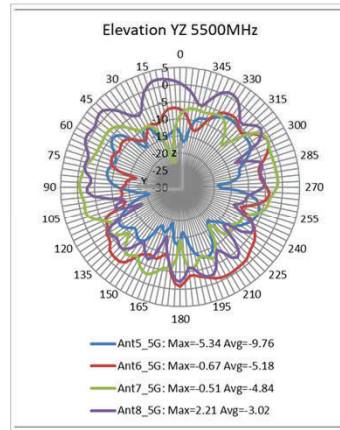




## System Coverage: Front to Back Elevation at 2.44 GHz & 5.5 GHz



WiFi Antennas @ 2.44 GHz

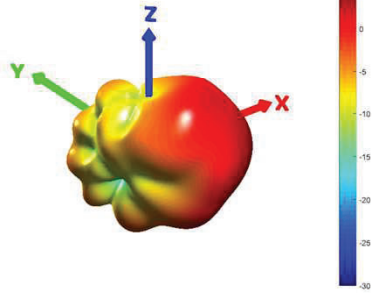


WiFi Antennas @ 5.5 GHz

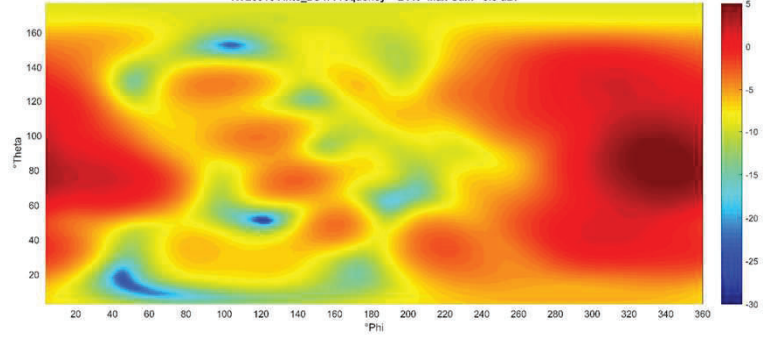


### 3D Pattern – Ant5 at 2.44 GHz

RTL6316 Ant5\_2G4: Frequency = 2440 MHz Peak Gain = 5.5 dBi

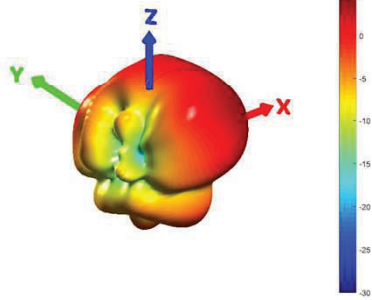


RTL6316 Ant5\_2G4: Frequency = 2440 Max Gain= 5.5 dBi

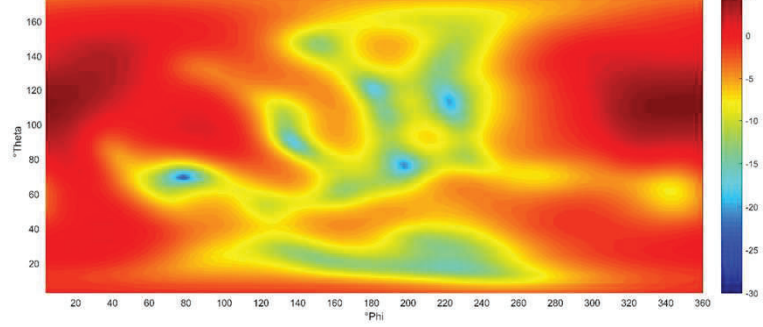


## 3D Pattern – Ant6 at 2.44 GHz

RTL6316 Ant6\_2G4: Frequency = 2440 MHz Peak Gain = 4.8 dBi

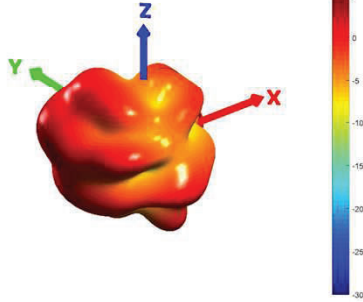


RTL6316 Ant6\_2G4: Frequency = 2440 Max Gain= 4.8 dBi

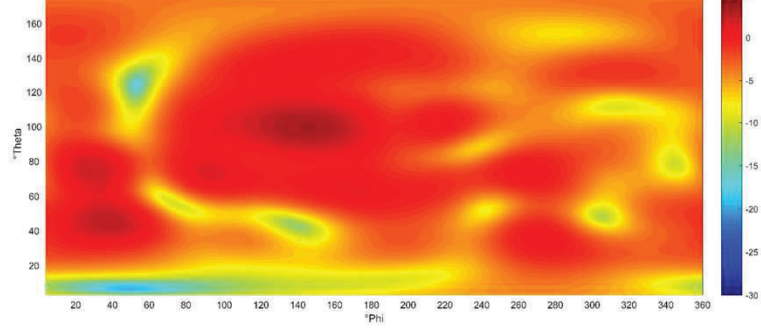


## 3D Pattern – Ant7 at 2.44 GHz

RTL6316 Ant7\_2G4: Frequency = 2440 MHz Peak Gain = 3.4 dBi

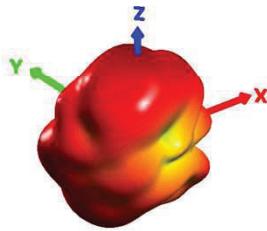


RTL6316 Ant7\_2G4: Frequency = 2440 Max Gain= 3.4 dBi

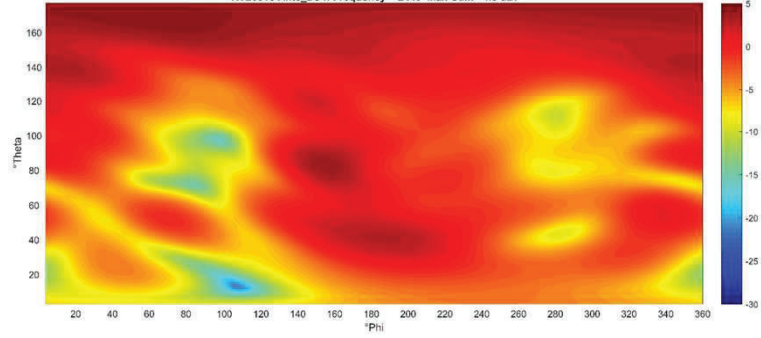


## 3D Pattern – Ant8 at 2.44 GHz

RTL6316 Ant8\_2G4: Frequency = 2440 MHz Peak Gain = 4.3 dBi

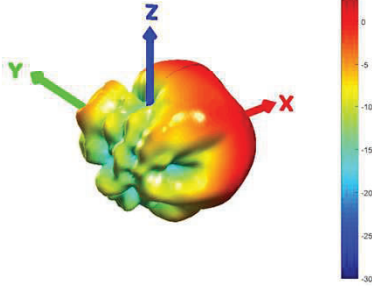


RTL6316 Ant8\_2G4: Frequency = 2440 Max Gain= 4.3 dBi

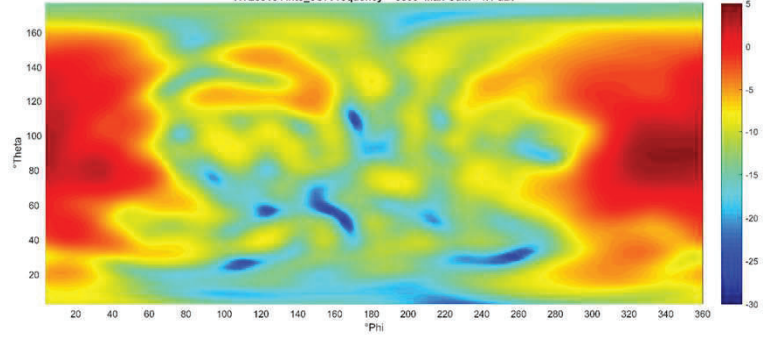


### 3D Pattern – Ant5 at 5.5 GHz

RTL6316 Ant5\_5G: Frequency = 5500 MHz Peak Gain = 4.1 dBi

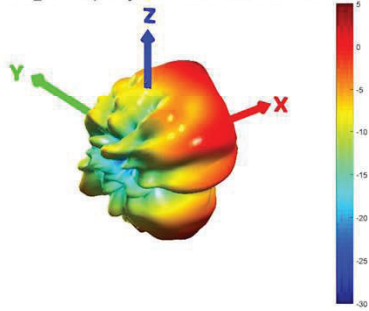


RTL6316 Ant5\_5G: Frequency = 5500 Max Gain= 4.1 dBi

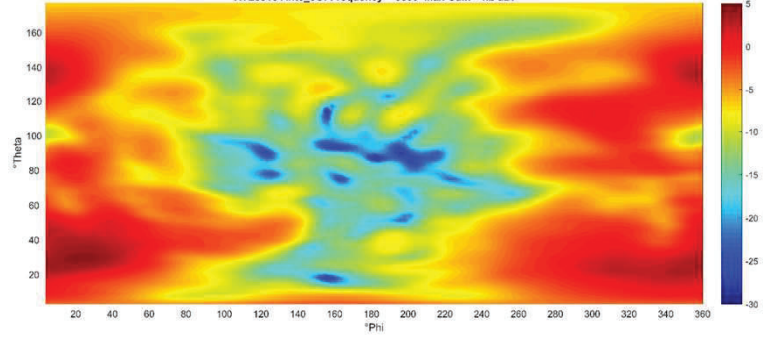


# 3D Pattern – Ant6 at 5.5 GHz

RTL6316 Ant6\_5G: Frequency = 5500 MHz Peak Gain = 4.2 dBi

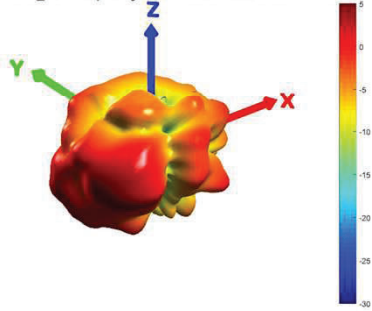


RTL6316 Ant6\_5G: Frequency = 5500 Max Gain= 4.2 dBi

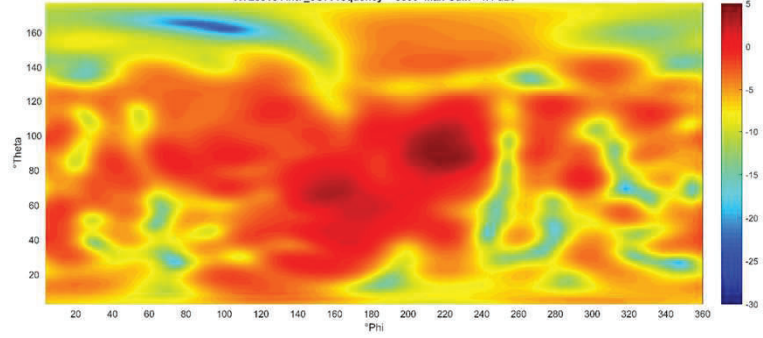


### 3D Pattern – Ant7 at 5.5 GHz

RTL6316 Ant7\_5G: Frequency = 5500 MHz Peak Gain = 4.4 dBi



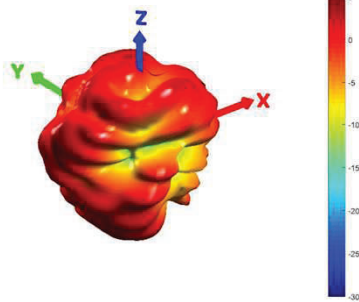
RTL6316 Ant7\_5G: Frequency = 5500 Max Gain= 4.4 dBi



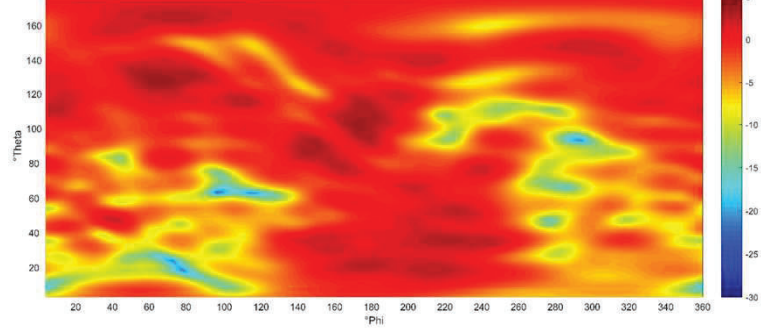


## 3D Pattern – Ant8 at 5.5 GHz

RTL6316 Ant8\_5G: Frequency = 5500 MHz Peak Gain = 3.8 dBi



RTL6316 Ant8\_5G: Frequency = 5500 Max Gain= 3.8 dBi

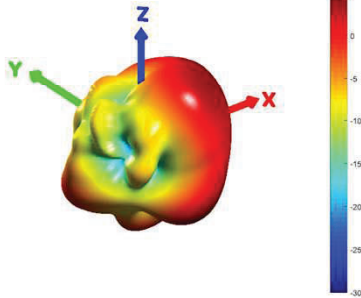


NASDAQ:AIRG © Copyright 2021 Airgain, Inc. All Rights Reserved. PROPRIETARY AND CONFIDENTIAL | 专有和机密, Airgain 拥有解决方案版权

35

## 3D Pattern – Ant4 at 2.11 GHz

RTL6316 Ant4\_1G7: Frequency = 2110 MHz Max Gain= 5.1 dBi



RTL6316 Ant4\_1G7: Frequency = 2110 Max Gain= 5.1 dBi

