

Wireless Router

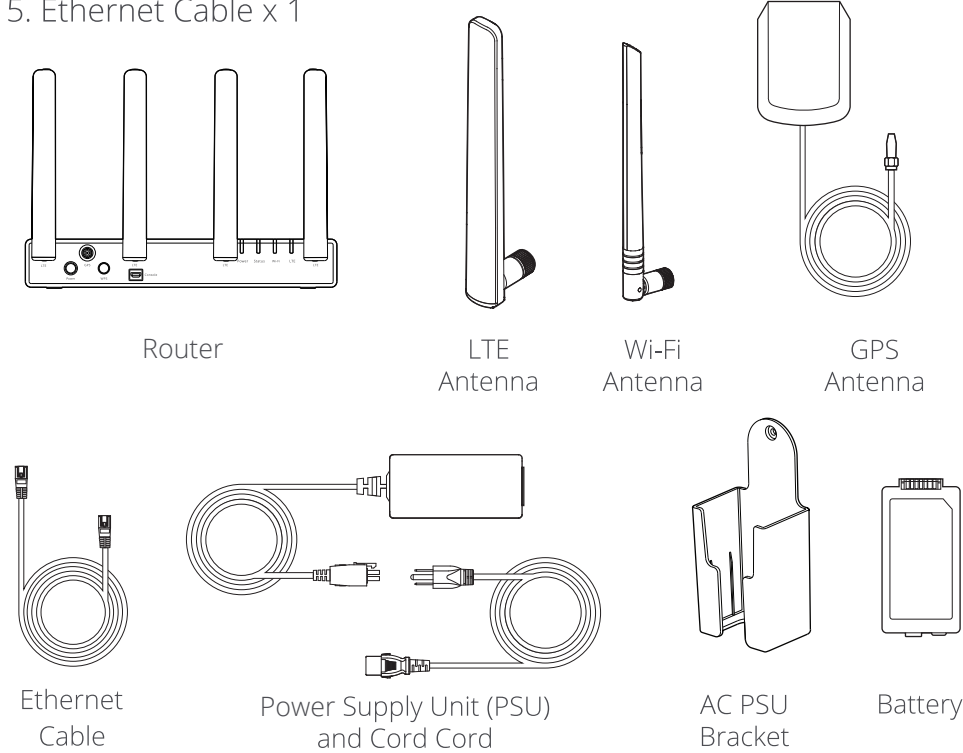
EAI2304P

Quick Installation Guide

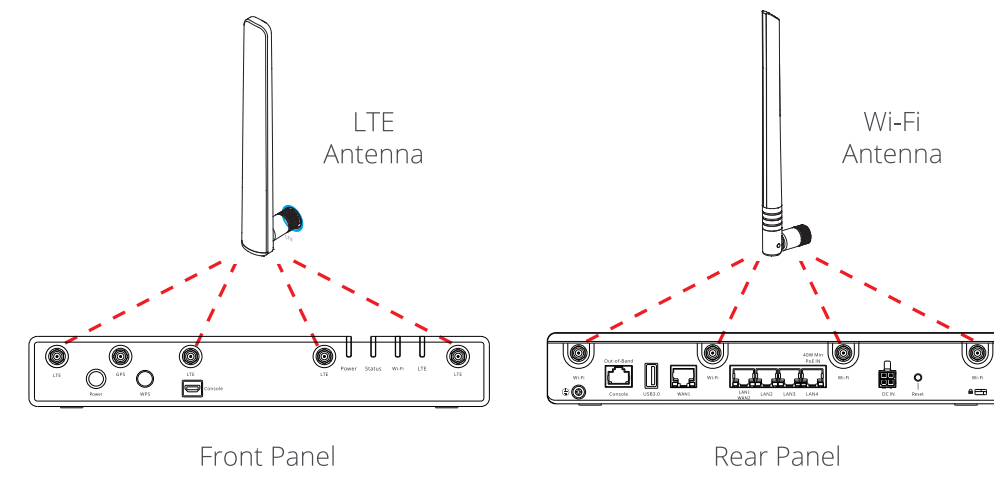
1. Package Contents

Check the contents of the package

1. WiFi Router x 1
2. LTE Antenna x 4
3. WiFi Antenna x 4
4. GPS Antenna x 1
5. Ethernet Cable x 1
6. Power Supply Unit and Power Cord x 1
7. AC PSU Bracket x 1
8. Battery x 1

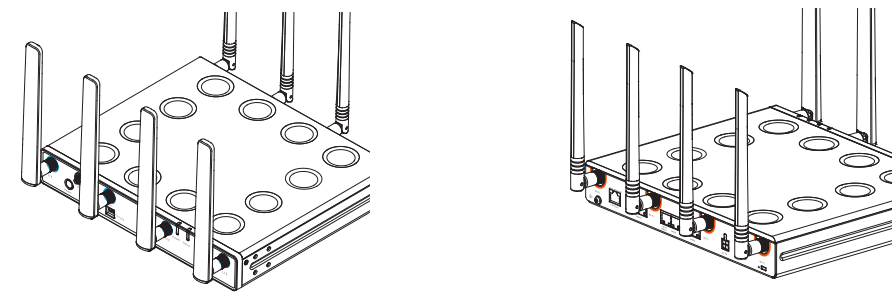


2. Antenna Installation

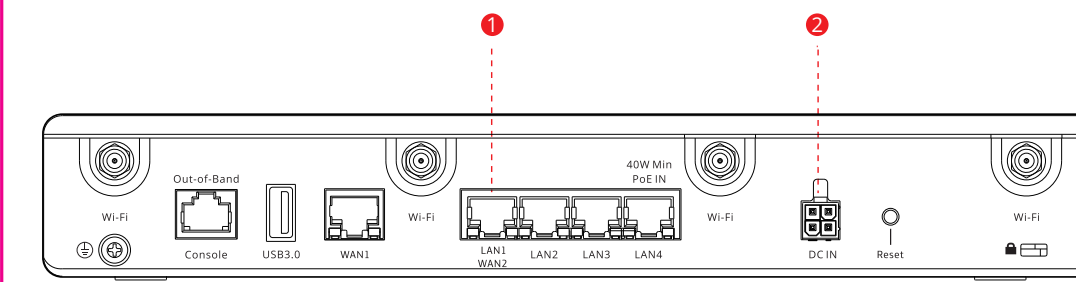


Install the 4 LTE Antennas to the RF connectors (marked with blue rings) located on the front panel.

Install the 4 Wi-Fi Antennas to the RF connectors (marked with brown rings) located on the rear panel.



3. Device Installation

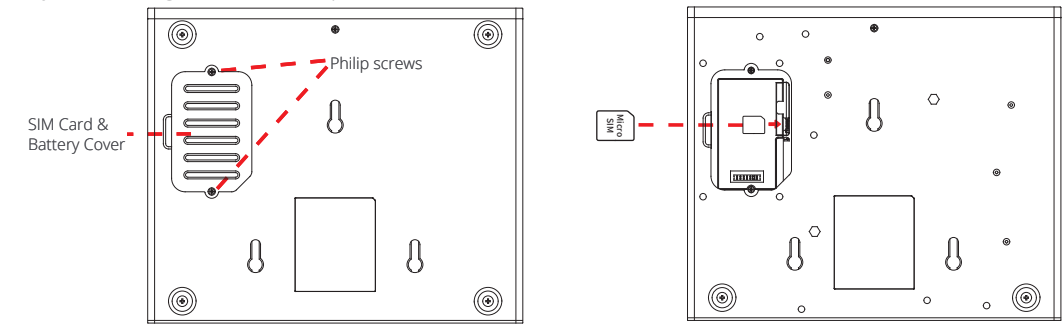


1. Connect the device to desktop/laptop computer via the any of the 4 LAN ports.
2. Connect the 4-pin power cord (attached to the power adapter) to the Router's DC IN port. Plug the 3-prong power plug to an electrical outlet to turn on the Router.

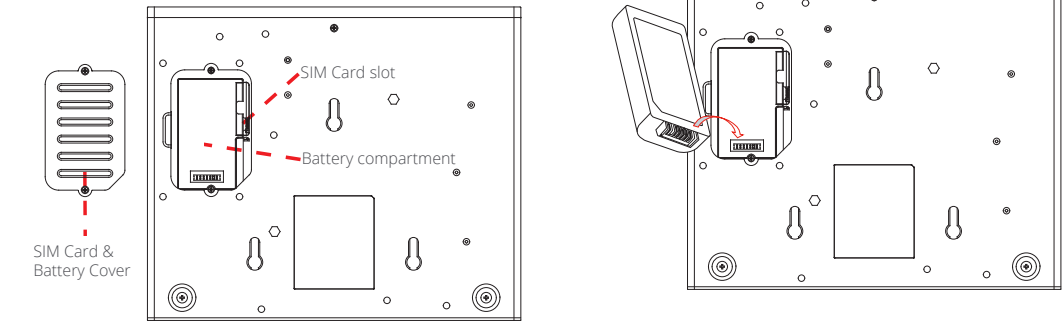
(This page intentionally left blank.)

4. SIM Card and Battery Installation

1. Turn the device upside down.
2. Remove the SIM Card & Battery cover by loosening the two Philip screws.
3. Set aside the removed SIM Card & Battery cover.
4. Insert the SIM Card. Make sure the SIM Card is pushed all the way into the slot.

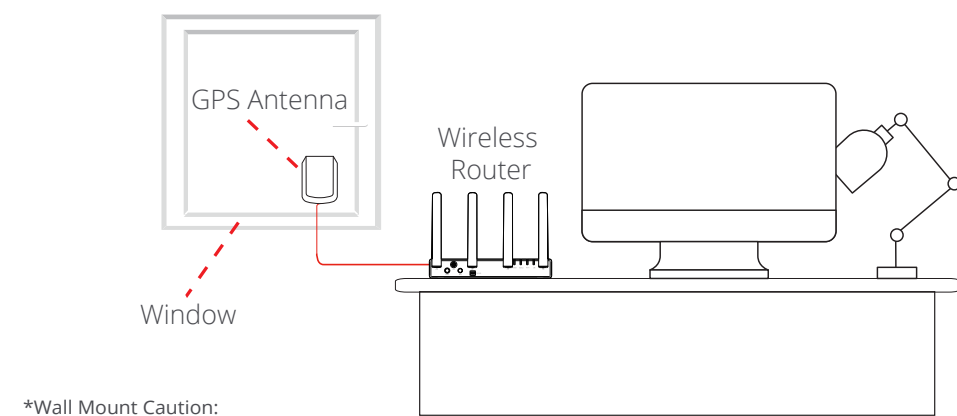
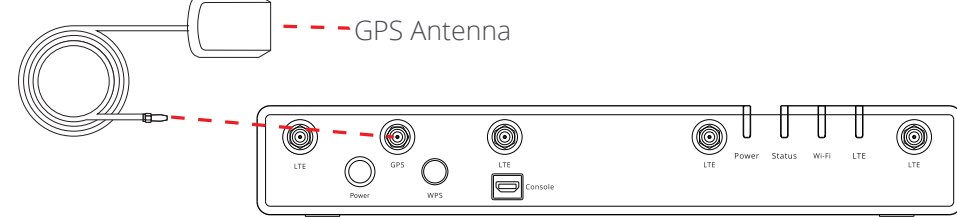


5. Insert the Battery.
6. Place the SIM Card & Battery Cover on the Battery compartment, tighten the Philips screws till the cover is tightly secured.



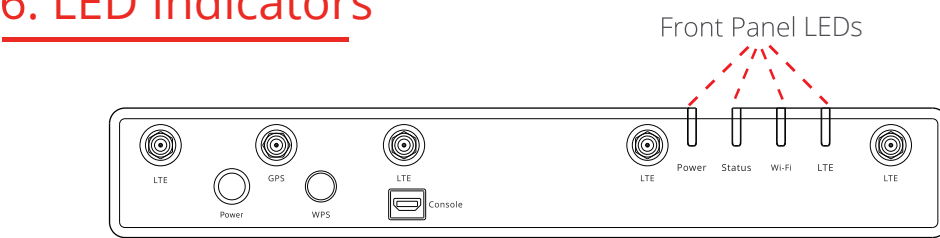
5. GPS Cable Installation

1. Connect the GPS Cable to the GPS-marked mini co-axial (SMC) connector located on the front panel of the wireless router.
2. Locate a nearby window. Mount the GPS Antenna on the window glass. (Remove adhesive film on the back of the GPS Antenna prior to mounting in on the window glass.)



***Wall Mount Caution:**
To ensure proper installation, use three M3.5 screws with a minimum length of 21.8 mm. The input connector must face toward the floor.
Pour garantir une installation correcte, utilisez trois vis M3.5 d'une longueur minimale de 21.8 mm. Le connecteur d'entrée doit être orienté vers le sol.

6. LED Indicators



LED	Activity	Description
LTE	OFF	LTE service is not connected.
	Solid BLUE	LTE connected and signal level good. [RSRP Range -105 dbm to -40 dbm]
	Solid YELLOW	Intermittent LTE signal [RSRP Range -106 dbm to -120 dbm] or DATA Connection failed casealso
	Solid RED	1. LTE is not functional. 2. SIM card is not provisioned or not properly provisioned. 3. SIM card is not inserted or not inserted properly.
	Solid GREEN	Reserved
System Status	Flashing GREEN	Device is under firmware upgrading process.
	Flashing LED (Color depends on LTE state)	Device is under Battery mode, LED Flashing period 5 seconds once
	OFF	Device is not connected to internet.
	Solid BLUE	Internet is connected thru multiple WAN.
	Solid GREEN	Internet is connected thru single WAN.
2.4GHz/5GHz	Solid RED	Device is under error state other than LTE error.
	Flashing GREEN	Device is under firmware upgrading process.
	Flashing LED (Color depends on LTE state)	Device is under Battery mode, LED Flashing period 5 seconds once
	OFF	Wi-Fi is not on and not operational, Wi-Fi disabled by default in Battery Mode
	Solid GREEN	Wi-Fi is on and operating normally.
POWER	Flash GREEN	Device is under firmware upgrading process.
	OFF	Device is not receiving power.
	Solid GREEN	Device is completely power on.
	Flashing GREEN	Device is under power on process.
	Flashing YELLOW	Device is under Battery mode. Flashing period 5 seconds once
POWER	Solid RED	Battery needs to be replaced.
	Flashing RED 5 times	Device cannot be power on for any reasons. (Critical low battery, High temperature)

7. FCC Statement

This equipment has been tested and found to comply with the limits for a Class B digital device, pursuant to Part 15 of the FCC Rules. These limits are designed to provide reasonable protection against harmful interference in a residential installation. This equipment generates, uses and can radiate radio frequency energy and, if not installed and used in accordance with the instructions, may cause harmful interference to radio communications.

However, there is no guarantee that interference will not occur in a particular installation. If this equipment does cause harmful interference to radio or television reception, which can be determined by turning the equipment off and on, the user is encouraged to try to correct the interference by one of the following measures:

- Reorient or relocate the receiving antenna.
- Increase the separation between the equipment and receiver.
- Connect the equipment into an outlet on a circuit different from that to which the receiver is connected.
- Consult the dealer or an experienced radio/TV technician for help.

FCC Caution: Any changes or modifications not expressly approved by the party responsible for compliance could void the user's authority to operate this equipment.

This transmitter must not be co-located or operating in conjunction with any other antenna or transmitter.

Radiation Exposure Statement:
This equipment complies with FCC radiation exposure limits set forth for an uncontrolled environment. This equipment should be installed and operated with minimum distance 45cm between the radiator & your body.
Operations in the 5.15-5.25GHz band are restricted to indoor usage only.

* Do not open the system's cover. If opening the cover for maintenance is a must, only a skill person should do so.

Battery Caution:
- If the battery is incorrectly replaced, there is a danger of explosion.
- Replace only with the same or equivalent type recommended by the manufacturer.
- Discard used batteries according to the manufacturer's instructions.

* N'ouvrez pas le capot du système. Si l'ouverture du couvercle pour l'entretien est indispensable, seule une personne qualifiée doit le faire.

MISE EN GARDE:
- Si la batterie n'est pas remplacée correctement, il existe un risque d'explosion.
- Remplacez uniquement par un type identique ou équivalent recommandé par le fabricant.
- Jetez les piles usagées conformément aux instructions du fabricant.

Drilling Template

