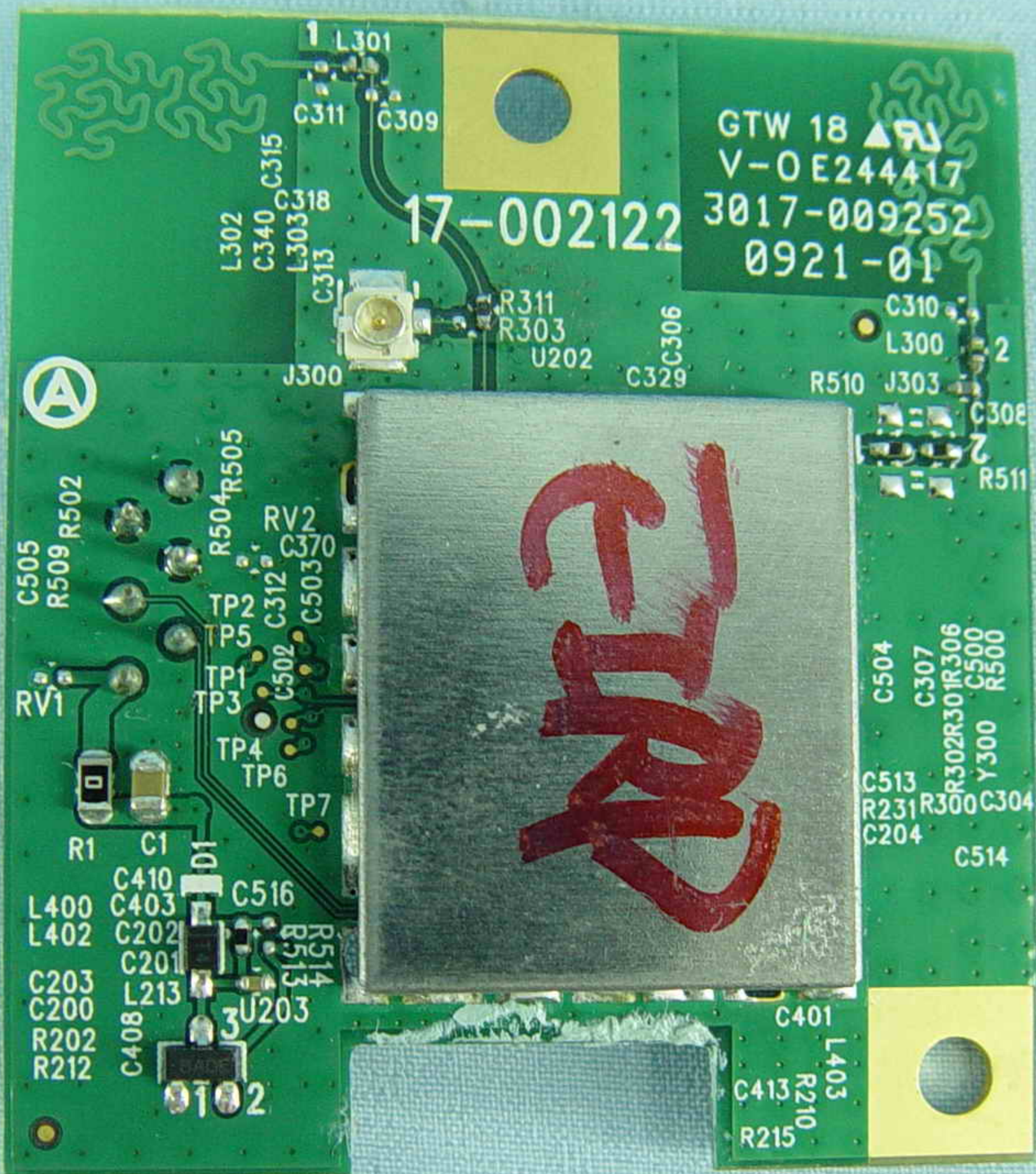


J220  
TP8  
TP9  
TP10  
TP11

MAC: 0024D2-A94753

RoHS  
SAMPLE

61968011752 B1761 S01



83

82

81

80

79

78

77

76

75

GTW, 18 ▲ RJ  
V-O E244417  
3017-009252  
0921-01

17-002122

1

L301  
C309  
C311  
L302  
C340  
C315  
L303  
C318  
C313  
J300  
R311  
R303  
U202  
C306  
C329  
C310  
L300  
R510  
J303  
C308  
R511

2

3

5

10

C32  
C358  
U201  
C305  
R310  
C412  
C414  
R260  
R214  
C513  
R231  
R300  
C304  
C204  
C514

C505  
R509  
R502  
RV1  
TP1  
TP3  
TP4  
TP6  
TP7  
TP2  
P5  
C502  
C312  
C503  
RV2  
C370  
C516  
R514  
R513  
C408  
L213  
U203  
C409  
C400  
C511  
C220  
C402  
R200  
R201  
L200  
C401  
L403  
C413  
R210  
R215

RV1  
TP1  
TP3  
TP4  
TP6  
TP7

RV2  
C370  
C503

TP2  
P5

C502  
C312  
C503

C412  
C414  
R260  
R214

C513  
R231  
R300  
C304  
C204

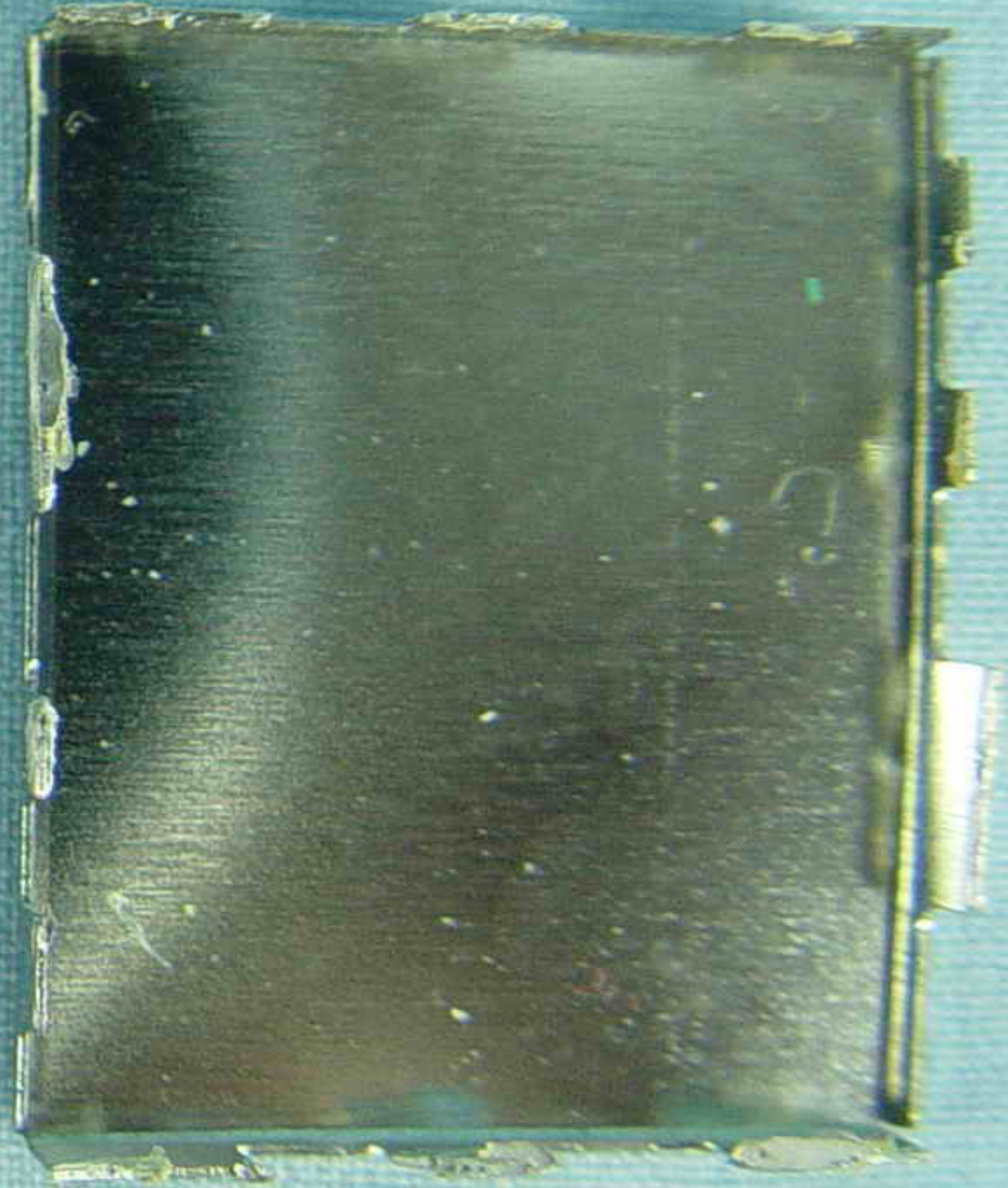
C514

C504  
C307  
R302  
R301  
R306  
Y300  
C500  
R500

C516  
R514  
R513  
C408  
L213  
U203  
C409  
C400  
C511  
C220  
C402  
R200  
R201  
L200

C401  
L403  
C413  
R210  
R215

(A)



17-002122 3617-000252  
0921-01



L302 C340 L303 C315  
J300 R311 R303 U202 C329 C306  
C505 R509 R502 TP2 R504 R505 RV2 C370 C503  
RV1 TP1 TP3 C502 TP4 TP6 TP7 C412 R310  
R1 C1 D1 C516 C513 R231 R300 C304 C514  
L400 C410 C403 C202 R515 R514  
C203 C201 L213 U203  
C200 L213 R202 C408  
R212

R311 R303 U202 C329 C306  
C32 C358 U201 C305  
C412 C414 R260 R214 C402  
C400 C511 C22U C409  
L200 R200 R201  
C401 L403 C413 R2

C310 L300 J303 C306 R511  
C504 C307 R302 R30 IR306 C500 R500 Y300  
C513 R231 R300 C304 C514

