

ASKEY
802.11b/g/n Module
WLU6111-D69
OPERATION
MANUAL

DRAFT_V01

1. Description

WLU6111-D69 is an 802.11b/g/n module; the product is put into the printer to connect with Wireless AP Router and user, while any user need to be printing any documents through wireless, WLU6111-D69 is better choice for use.

The WLU6111 is intended to be installed by a system integrator, not the end-user.

2. Product Spec.

Host Interfaces	USB2.0
Form factor	USB Wireless module
Chipset	Broadcom BCM4319
Operation Voltage	3.0VDC ~ 3.6VDC
Network Standards	IEEE 802.11b/g/n
Modulation Techniques	DBPSK, DQPSK, CCK, BPSK, QPSK, 16QAM, 64QAM
Modulation Technology	OFDM, DSSS with proprietary operation at 65Mbps(max.) within 20MHz (HT20)
Data Rate	802.11b: 11, 5.5, 2, 1 Mbps 802.11g: 54, 48, 36, 24, 18, 12, 9, 6 Mbps HT20: 65 MHz (MCS7)
Network Architectures	Infrastructure and Ad Hoc
Operating Frequencies	2.412 – 2.462 GHz
Antenna Type	Fractal-Antenna
Operating Channels	802.11b: 11 for North America; 13 for Europe; 14 for Japan 802.11g: 11 for North America; 13 for Europe; 14 for Japan (Operation is limited in firmware to meet national regulations, not changeable by the user)
RF Output Power	802.11b: 17.0 dBm +/- 1.5 dBm 802.11g: 17.0 dBm +/- 1.5 dBm 802.11n: 14.0 dBm +/- 1.5 dBm
Receiver sensitivity (PER < 10%)	802.11b: -85dBm @ 11Mbps and PER < 8% 802.11g: -70dBm @ 54Mbps and PER < 10% 802.11n: -68dBm @ MCS 7 B.W 20MHz and PER < 10%
Power Consumption	TX: 330mA @ 1Mbps; 215mA@54Mbps; 250mA@MCS7 RX: 120mA
Security	1. WPA™ (personal) and WPA2™ (personal) certified for powerful encryption and authentication 2. AES and TKIP in hardware for faster data encryption and IEEE 802.11i™ Compatibility.
Software Support	Windows® CE 5.0, Linux®, Windows® XP
Temperatures (AMBIENT)	Operates from 0 to 70°C; Storage from -40 to 70°C
Humidity (non-condensing)	5 to 95 %
Unsupported operation	WIN 98 and WIN ME
Manufacturer ID	PID: BD 16
Product ID	VID: 0A5C

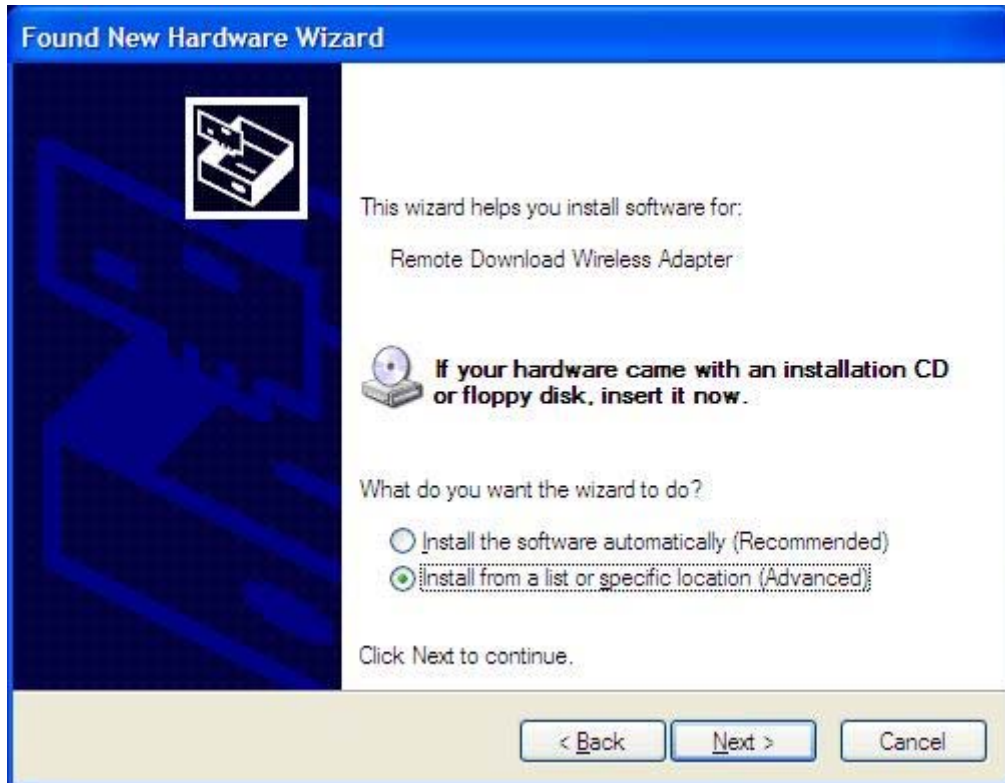
3. Setup Operation

Please setup WLU6111-D69 into the printer, connect power cable from printer to power jack of WLU6111-D69; power on the printer when you make sure WLU6111-D69 can be supplier from printer, then you can see below setup window:

- A. Install WLU6111-D69 into the system.
- B. Press “No, not this time” as below window:



C. Press “Install from a list or specific location (Advanced)” as below window:



D. Press “Continue Anyway” as below window:



- E. Press “Finish”, then you can connect with other wireless device through the Wireless Module.



USA - Federal Communications Commission (FCC)

FCC Radiation Exposure Statement



CAUTION:

. • The radiated output power of WiFi Module 802.11bgn devices is far below the FCC radio frequency exposure limits. Nevertheless, WiFi Module 802.11bgn devices should be used in such a manner that the potential for human contact during normal operation is minimized. To avoid the possibility of exceeding the FCC radio frequency exposure limits, you should keep a distance of at least 20cm separation from antennas in the Printer between you (or any other person in the vicinity) and the antenna that is built into the notebook.

Interference Statement

These devices comply with Part 15 of the FCC Rules. Operation of the devices is subject to the following two conditions: (1) The devices may not cause harmful interference, and (2) The devices must accept any interference that might cause undesired operation.

This equipment has been tested and found to comply with the limits for a Class B digital device, pursuant to Part 15 of the FCC Rules. These limits are designed to provide reasonable protection against harmful interference in a residential installation. This equipment generates, uses, and can radiate radio frequency energy. If the equipment is not installed and used in accordance with the instructions, the equipment might cause harmful interference to radio communications.

There is no guarantee, however, that such interference will not occur in a particular installation.

If this equipment does cause harmful interference to radio or television reception (which can be determined by turning the equipment off and on), the user is encouraged to try to correct the interference by taking one or more of the following measures:

- . • Relocate this device.
- . • Increase the separation between the device and the receiver.
- . • Connect the device into an outlet on a circuit different from that of other electronics.
- . • Consult the dealer or an experienced radio technician for help.



NOTE:

. • WiFi Module 802.11bgn must be installed and used in strict accordance with the manufacturer's instructions as described in the user documentation that comes with the product. Any other installation or use will violate FCC Part 15 regulations. Modifications not expressly approved by ASKEY could void your authority to operate the equipment.

. • The devices must not be co-located or operating in conjunction with any other antenna or transmitter.

Canada. Industry Canada (IC)

This device complies with RSS210 of Industry Canada.



CAUTION: Exposure to Radio Frequency Radiation. The installer of this radio equipment must ensure that the antenna is located or pointed such that it does not emit RF field in excess of Health Canada limits for the general population. Consult Safety Code 6, obtainable from health Canada's website www.hc-sc.ca/rpb.

1. This Transmitter must not be co-located or operating in conjunction with any other antenna or transmitter.
2. This equipment complies with FCC RF radiation exposure limits set forth for an uncontrolled environment.
3. Any changes or modifications (including the antennas) made to this device that are not expressly approved by the manufacturer may void the user's authority to operate the equipment.

This device is intended only form OEM integrators under the following conditions:

- 1) The transmitter module may not be co-located with any other transmitter or antenna.

IMPORTANT NOTE: In the event that these conditions can not be met (for example certain laptop configurations or co-location with another transmitter), then the FCC authorization is no longer considered valid and the FCC ID can not be used on the final product. In these circumstances, the OEM integrator will be responsible for re-evaluating the end product (including the transmitter) and obtaining a separate FCC authorization.

End Product Labeling

The final end product must be labeled in visible area with the following:

Contains TX FCC ID: H8N-WLU6111; IC: 1353A-WLU6111

End Product Manual Information

The user manual for end users must include the following information in a prominent location

"IMPORTANT NOTE: To comply with FCC RF exposure compliance requirements, the antenna must not be co-located or operating in conjunction with any other antenna or transmitter.

Operation is subject to the following two conditions: (1) this device may not cause interference, and (2) this device must accept any interference, including interference that may cause undesired operation of the device.