



## Test Report

Product Name : Cable Modem  
Model No.: DPR362 Series Cable Modem, CME090W  
FCC ID.: H8N-DPR362

Applicant : ASKEY COMPUTER CORP.

Address : 10F, NO.119, CHIENKANG RD., CHUNG-HO, TAIPEI,  
TAIWAN, R.O.C.

Date of Receipt : Sep. 23, 2002

Date of Test : Oct. 15, 2002

Report No. : 029H090FI

The test results relate only to the samples tested.

The test report shall not be reproduced except in full without the written approval of Quietek Corporation.  
This report must not be used to claim product endorsement by NVLAP any agency of the U.S. Government

# Test Report Certification

Test Date : Oct. 15, 2002

Report No. : 029H090FI



Accredited by NIST (NVLAP)

NVLAP Lab Code: 200347-0

Product Name : Cable Modem

Applicant : ASKEY COMPUTER CORP.

Address : 10F, NO.119, CHIENKANG RD., CHUNG-HO, TAIPEI, TAIWAN, R.O.C.

Manufacturer : ASKEY COMPUTER CORP.

Model No. : DPR362 Series Cable Modem, CME090W

FCC ID. : H8N-DPR362

Rated Voltage : AC 120V/60Hz

Trade Name : WebSTAR, ASKEY

Measurement Standard : FCC Part 15 Subpart C Paragraph 15.247

Measurement Procedure : ANSI C63.4: 1992

Test Result : Complied



The Test Results relate only to the samples tested.

The test report shall not be reproduced except in full without the written approval of Quietek Corporation.

This report must not be used to claim product endorsement by NVLAP any agency of the U.S. Government

Documented By : Ginny Peng  
 (Ginny Peng)

Tested By : Ken Hsu  
 (Ken Hsu)

Approved By : Kevin Wang  
 (Kevin Wang)

## TABLE OF CONTENTS

Description	Page
<b>1. GENERAL INFORMATION.....</b>	<b>5</b>
1.1. EUT Description.....	5
1.2. Operational Description .....	6
1.3. Tested System Details.....	7
1.4. Configuration of tested System .....	9
1.5. EUT Exercise Software .....	9
1.6. Test Facility .....	10
<b>2. Conducted Emission.....</b>	<b>11</b>
2.1. Test Equipment.....	11
2.2. Test Setup .....	11
2.3. Limits .....	11
2.4. Test Procedure .....	12
2.5. Test Result of Conducted Emission.....	13
<b>3. Peak Power Output .....</b>	<b>15</b>
3.1. Test Equipment.....	15
3.2. Test Setup .....	15
3.3. Limits .....	15
3.4. Test Result of Peak Power Output.....	16
<b>4. RF Exposure Evaluation.....</b>	<b>17</b>
4.1. Fries Formula .....	17
4.2. EUT Operation condition .....	17
4.3. Test Result of RF Exposure Evaluation.....	18
<b>5. Radiated Emission.....</b>	<b>19</b>
5.1. Test Equipment.....	19
5.2. Test Setup .....	19
5.3. Limits .....	20
5.4. Test Procedure .....	21
5.5. Test Result of Radiated Emission.....	22
<b>6. Band Edge .....</b>	<b>31</b>
6.1. Test Equipment.....	31
6.2. Test Setup .....	31
6.3. Limits .....	32
6.4. Test Procedure .....	32
6.5. Test Result of Band Edge .....	33
<b>7. Occupied Bandwidth.....</b>	<b>36</b>
7.1. Test Equipment.....	36
7.2. Test Setup .....	36
7.3. Limits .....	36
7.4. Test Result of Occupied Bandwidth .....	37
<b>8. Power Density .....</b>	<b>40</b>

---

8.1.	Test Equipment.....	40
8.2.	Test Setup .....	40
8.3.	Limits .....	40
8.4.	Test Result of Power Density .....	41
<b>9.</b>	<b>Processing Gain .....</b>	<b>44</b>
9.1.	Limits .....	44
9.2.	Test Procedure .....	44
9.3.	Test Result of Processing Gain.....	45
	<b>EMI Reduction Method During Compliance Testing .....</b>	<b>46</b>
Attachment 1:	EUT Test Photographs	
Attachment 2:	EUT Detailed Photographs	

## 1. GENERAL INFORMATION

### 1.1. EUT Description

Product Name	: Cable Modem
Trade Name	: WebSTAR, ASKEY
FCC ID.	: DoC
Model No.	: DPR362 Series Cable Modem, CME090W
Frequency Range	: 2412MHz to 2462MHz
Channel Number	: 11
Transmit Speed	: 11Mbps
Type of Modulation	: Direct Sequence Spread Spectrum
Antenna type	: Soldered on PCB
Antenna Gain	: 2dBi
Operator Selection of	: By software
Operating Frequency	
USB Cable	: Shielded, 1.4m.
LAN Cable	: Non-shielded, 3.0m
Power Adapter (Mode 1)	: OEM, AD-121ANDT Cable In: Non-shielded, 1.8m Cable Out: Non-shielded, 1.8m
Power Adapter (Mode 2)	: DELTA, ADP-12SB Cable Out: Non-shielded, 1.4m Power Cord: Non-shielded, 1.8m

Frequency of Each Channel:

Channel	Frequency	Channel	Frequency	Channel	Frequency
Channel 1:	2412 MHz	Channel 5:	2432 MHz	Channel 9:	2452 MHz
Channel 2:	2417 MHz	Channel 6:	2437 MHz	Channel 10:	2457 MHz
Channel 3:	2422 MHz	Channel 7:	2442 MHz	Channel 11:	2462 MHz
Channel 4:	2427 MHz	Channel 8:	2447 MHz		

Note:

1. This device is a 2.4GHz Cable Modem included a 2.4GHz receiving function, a 2.4GHz transmitting function.
2. Regarding to the different construction of the EUT, the model number were shown in the table as following :

M/N	Company	Trade	S/N
DRP362 Series Cable Modem	Scientific-Atlanta	WebSTAR	5576
CME090W	ASKEY COMPUTER CORP.	ASKEY	N/A

3. These tests were conducted on a sample of the equipment for the purpose of demonstrating compliance with Part 15 Subpart C Paragraph 15.247 for spread spectrum devices.
4. This device is a composite device in accordance with Part 15 regulations. The function receiving was measured and made a test report that the report number is 029H090F under Declaration of Conformity.

EMI Mode    Mode 1: OEM AD-121ANDT  
                   Mode 2: DELTA ADP-12SB

## 1.2. Operational Description

EUT is a Cable Modem with 11 channels. This device provided four kind of transmitting speed 1,2,5.5 and 11Mbps. The device of RF carrier is DQPSK, DB PSK and CCK.

The device adapts direct sequence spread spectrum modulation. The antenna was solded on PCB provides diversity function to improve the receiving function.

This Cable Modem is an IEEE 802.11b Wireless LAN adapter. It allows your computer to connect to a wireless network and to share resources, such as files or printers without being bound to the network wires. Operation in 2.4GHz Direst Sequence Spread Spectrum (DSSS) radio transmission, the Cable Modem transfers data at speeds up to 64/128-bit Wired Equivalent Protection (WEP) algorithm is used. In addition, its standard compliance ensures that it can communicate with any 802.11b network.

### 1.3. Tested System Details

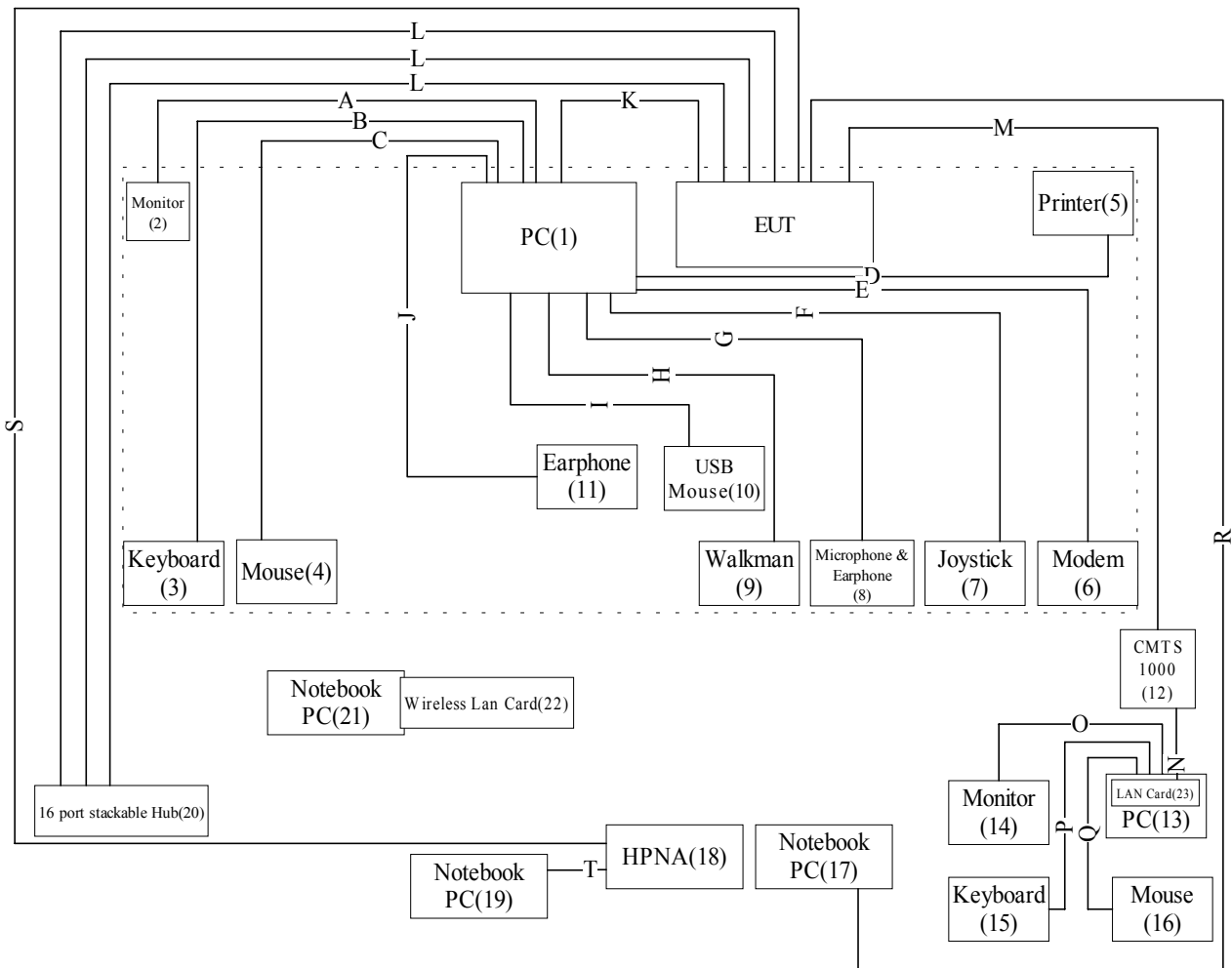
The types for all equipment, plus descriptions of all cables used in the tested system (including inserted cards) are:

	Product	Manufacturer	Model No.	Serial No.	Power Cord
(1)	PC	HP	01-0941Pro	N/A	Non-shielded, 1.8m
(2)	Monitor	SYNCO	15CP	1910830	Non-shielded, 1.8m
(3)	Keyboard	HP	SK-2502	M971237059	--
(4)	Mouse	IBM	M-SAU-IBM6	23-029334	--
(5)	Printer	HP	C2642A	MY75N1D2Y1	Non-shielded, 0.7m
(6)	Modem	ACEEX	1414	980033035	Non-shielded, 1.6m
(7)	Joystick	Logitech	863132-0000	AE83700069	--
(8)	Microphone & Earphone	TOKTO	SX-MI	N/A	--
(9)	Walkman	TOBISHI	TB-21984	N/A	--
(10)	USB Mouse	Logitech	M-UE55	LTC93813276	--
(11)	Earphone	BSD	PH136	N/A	--
(12)	CMTS 1000	Nortel Networks	DE3801E02	N/A	--
(13)	PC	IBM	16W	BNL676N	Non-shielded, 1.8m
(14)	Monitor	VIEWSONIC	VCDT521491-1P	ER00681859	Non-shielded, 1.8m
(15)	Keyboard	LEMEL	5201	753622030930	--
(16)	Mouse	IBM	M-SAU-IBM6	23-029014	--
(17)	Notebook PC	ACER	500	9145B0160C91000CF2M	Non-shielded, 1.8m
(18)	HPNA	NETGEAR	PE102	N/A	--
(19)	Notebook PC	LEO	DESIGNOTE	NB7017260B	Non-shielded, 1.6m
(20)	16 port stackable Hub	N/A	NF6416SB	N/A	Non-shielded, 1.8m
(21)	Notebook PC	LEO	DESIGNOTE	NB7017260B	Non-shielded, 1.6m
(22)	Wireless Lan Card	W-Link	DWL-650	N/A	--
(23)	LAN Card	D-LINK	DFE-500TX	0080C8 958320	--

Signal Cable Type		Signal cable Description
A.	VGA Cable	Shielded, 1.6m, a ferrite core bonded
B.	Keyboard Cable	Shielded, 1.8m
C.	Mouse Cable	Shielded, 1.8m
D.	Printer Cable	Shielded, 1.2m, a ferrite core bonded
E.	Modem Cable	Shielded, 1.5m
F.	Joystick Cable	Shielded, 2.0m
G.	Microphone & Earphone Cable	Non-shielded, 1.6m
H.	Walkman Cable	Non-shielded, 1.8m
I.	USB Mouse Cable	Shielded, 1.0m
J.	Earphone Cable	Non-shielded, 1.2m
K.	USB Cable	Shielded, 1.4m
L.	LAN Cable	Non-shielded, 3.0m, 3Pcs.
M.	Coaxial Cable	Shielded, 5.0m
N.	LAN Cable	Non-shielded, 1.0m
O.	VGA Cable	Shielded, 1.6m
P.	Keyboard Cable	Shielded, 1.8m
Q.	Mouse Cable	Shielded, 1.8m
R.	LAN Cable	Non-shielded, 3.0m
S.	Telecom Cable	Non-shielded, 1.0m
T.	LAN Cable	Non-shielded, 1.0m



### 1.4. Configuration of tested System



### 1.5. EUT Exercise Software

- (1) Setup the EUT and simulators as shown on 1.4
- (2) Turn on the power of all equipment.
- (3) Boot the PC from Hard Disk.
- (4) Data will communicate between personal computer and partner personal computer through the EUT.
- (5) Telecom Signal will communicate between personal computer and partner personal computer through the EUT.
- (6) The personal computer and partner personal computer's monitor will show the transmitting and receiving characteristics when the communication is success.
- (7) Wireless LAN function was used to perform the wireless data transmission.
- (8) Repeat the above procedure 1.5.3 to 1.5.7.

**1.6. Test Facility**

Ambient conditions in the laboratory:

Items	Required (IEC 68-1)	Actual
Temperature (°C)	15-35	20-35
Humidity (%RH)	25-75	50-65
Barometric pressure (mbar)	860-1060	950-1000

Site Description: November 3, 1998 File on  
 Federal Communications Commission  
 FCC Engineering Laboratory  
 7435 Oakland Mills Road  
 Columbia, MD 21046  
 Reference 31040/SIT1300F2  
 August 30, 2001 Accreditation on NVLAP  
 NVLAP Lab Code: 200347-0



Site Name: Quietek Corporation

Site Address: No.75-1, Wang-Yeh Valley, Yung-Hsing,  
 Chiung-Lin, Hsin-Chu County,  
 Taiwan, R.O.C.  
 TEL : 886-3-592-8858 / FAX : 886-3-592-8859  
 E-Mail: [service@quietek.com](mailto:service@quietek.com)

## 2. Conducted Emission

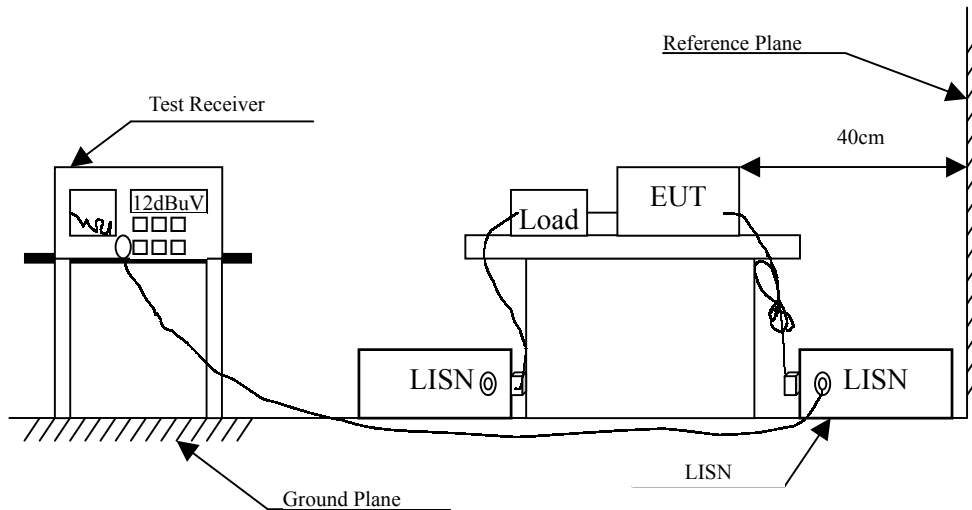
### 2.1. Test Equipment

The following test equipment are used during the conducted emission test:

Item	Instrument	Manufacturer	Type No./Serial No	Last Cal.	Remark
1	Test Receiver	R & S	ESCS 30/825442/17	May, 2002	
2	L.I.S.N.	R & S	ESH3-Z5/825016/6	May, 2002	EUT
3	L.I.S.N.	Kyoritsu	KNW-407/8-1420-3	May, 2002	Peripherals
4	Pulse Limiter	R & S	ESH3-Z2	N/A	
5	No.2 Shielded Room			N/A	

Note: All equipment upon which need to calibrated are with calibration period of 1 year.

### 2.2. Test Setup



### 2.3. Limits

FCC Part 15 Paragraph 15.207 (dBuV)		
Frequency MHz	Limits	
	uV	dBuV
0.45 - 30	250	48.0

## 2.4. Test Procedure

The EUT and simulators are connected to the main power through a line impedance stabilization network (L.I.S.N.). This provides a 50 ohm /50uH coupling impedance for the measuring equipment. The peripheral devices are also connected to the main power through a LISN that provides a 50ohm/50uH coupling impedance with 50ohm termination. (Please refer to the block diagram of the test setup and photographs.)

Both sides of A.C. line are checked for maximum conducted interference. In order to find the maximum emission, the relative positions of equipment and all of the interface cables must be changed according to ANSI C63.4:1992 on conducted measurement.

Conducted emissions were investigated over the frequency range from 0.45MHz to 30MHz using a receiver bandwidth of 9kHz.

## 2.5. Test Result of Conducted Emission

Product : Cable Modem  
 Test Item : Conducted Emission  
 Test Mode : Mode 1: OEM AD-121ANDT

Frequency MHz	Cable Loss dB	LISN Factor dB	Reading Level dBuV	Emission Level dBuV	Limits dBuV
<b>Line 1</b>					
<b>Quasi-Peak:</b>					
0.453	0.06	0.20	44.25	44.51	48.00
0.494	0.06	0.21	42.83	43.11	48.00
0.537	0.07	0.22	41.02	41.31	48.00
*13.419	0.31	0.52	44.05	44.88	48.00
16.013	0.33	0.54	42.64	43.51	48.00
20.007	0.35	0.56	39.81	40.73	48.00
<b>Line 2</b>					
<b>Quasi-Peak:</b>					
*0.453	0.06	0.20	45.07	45.33	48.00
0.499	0.06	0.21	43.72	44.00	48.00
0.535	0.07	0.22	42.50	42.79	48.00
13.417	0.31	0.52	43.99	44.82	48.00
16.006	0.33	0.54	40.59	41.46	48.00
20.008	0.35	0.56	40.07	40.99	48.00

Remarks :

1. All Readings below 1GHz are Quasi-Peak value.
2. “ \* ” means that this data is the worst emission level.
3. Emission Level = Reading Level + LISN Factor + Cable Loss.

Product : Cable Modem  
 Test Item : Conducted Emission  
 Test Mode : Mode 2: DELTA ADP-12SB

Frequency MHz	Cable Loss dB	LISN Factor dB	Reading Level dBuV	Emission Level dBuV	Limits dBuV
<b>Line 1</b>					
<b>Quasi-Peak:</b>					
0.529	0.07	0.22	38.71	39.00	48.00
1.321	0.12	0.31	39.75	40.17	48.00
1.717	0.13	0.33	40.38	40.84	48.00
3.036	0.17	0.38	38.75	39.30	48.00
*7.432	0.24	0.47	40.51	41.22	48.00
23.127	0.37	0.58	38.12	39.07	48.00
<b>Line 2</b>					
<b>Quasi-Peak:</b>					
1.281	0.12	0.30	39.32	39.74	48.00
1.546	0.13	0.32	40.77	41.22	48.00
1.810	0.14	0.34	39.66	40.13	48.00
*7.286	0.24	0.47	40.91	41.62	48.00
9.581	0.27	0.49	40.48	41.24	48.00
23.128	0.37	0.58	36.25	37.20	48.00

Remarks :

1. All Readings below 1GHz are Quasi-Peak value.
2. “ \* ” means that this data is the worst emission level.
3. Emission Level = Reading Level + LISN Factor + Cable Loss.

### 3. Peak Power Output

#### 3.1. Test Equipment

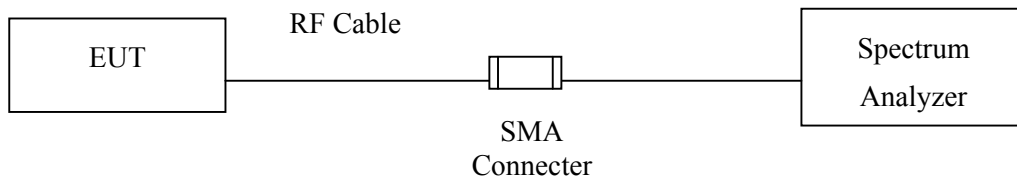
The following test equipments are used during the radiated emission tests:

	Equipment	Manufacturer	Model No./Serial No.	Last Cal.
X	Spectrum Analyzer	Advantest	R3272 / 72421194	May, 2002

Note: 1. All equipment upon which need to calibrated are with calibration period of 1 year.  
 2. Mark "X" test instruments are used to measure the final test results.

#### 3.2. Test Setup

##### Conduction Power Measurement



#### 3.3. Limits

The maximum peak power shall be less 1 Watt.

### 3.4. Test Result of Peak Power Output

Product : Cable Modem  
Test Item : Peak Power Output  
Test Site : No.1 OATS  
Test Mode : Normal Operation

#### Data Speed: 11Mbps

Channel No.	Frequency(MHz)	Measurement	Required Limit	Result
1	2412.00	15.01dBm	1 Watt= 30 dBm	Pass
6	2437.00	15.74dBm	1 Watt= 30 dBm	Pass
11	2462.00	16.39dBm	1 Watt= 30 dBm	Pass



#### 4. RF Exposure Evaluation

According to FCC 1.1310: The criteria listed in the following table shall be used to evaluate the environment impact of human exposure to radio frequency (RF) radiation as specified in 1.1307(b)

##### LIMITS FOR MAXIMUM PERMISSIBLE EXPOSURE (MPE)

Frequency Range (MHz)	Electric Field Strength (V/m)	Magnetic Field Strength (A/m)	Power Density (mW/cm <sup>2</sup> )	Average Time (Minutes)
(A) Limits for Occupational/ Control Exposures				
300-1500	--	--	F/300	6
1500-100,000	--	--	5	6
(B) Limits for General Population/ Uncontrolled Exposures				
300-1500	--	--	F/1500	6
1500-100,000	--	--	1	30

F= Frequency in MHz

#### 4.1. Fries Formula

Fries transmission formula:  $P_d = (P_{out} * G) / (4 * \pi * r^2)$

Where

$P_d$  = power density in mW/cm<sup>2</sup>

$P_{out}$  = output power to antenna in mW

G = gain of antenna in linear scale

$\pi$  = 3.1416

R = distance between observation point and center of the radiator in cm

$P_d$  is the limit of MPE, 1 mW/cm<sup>2</sup>. If we know the maximum gain of the antenna and the total power input to the antenna, through the calculation, we will know the distance r where the MPE limit is reached.

#### 4.2. EUT Operation condition

Software provided by client enabled the EUT to transmit and receive data at lowest, middle and highest channel individually.

### 4.3. Test Result of RF Exposure Evaluation

Product : Cable Modem  
 Test Item : RF Exposure Evaluatio  
 Test Site : No.1 OATS  
 Test Mode : Normal Operation

#### 4.3.1 Antenna Gain

Antenna Gain: The maximum Gain measured in fully anechoic chamber is 2dBi or 1.58 in linear scale.

#### 4.3.2 Output Power Into Antenna & RF Exposure Evaluation Distance

Channel	Channel Frequency (MHz)	Output Power to Antenna (mw)	Minimum Allowable Distance ® From Skin(cm)
1 (11Mbps)	2412.00	31.70	1.95
6 (11Mbps)	2437.00	15.74	2.13
11 (11Mbps)	2462.00	16.39	2.29

The distance r (4<sup>th</sup> column) calculated from the Fries transmission formula is far shorter than 20 cm separation requirement. So, RF exposure limit warning or SAR test are not required.

**5. Radiated Emission**

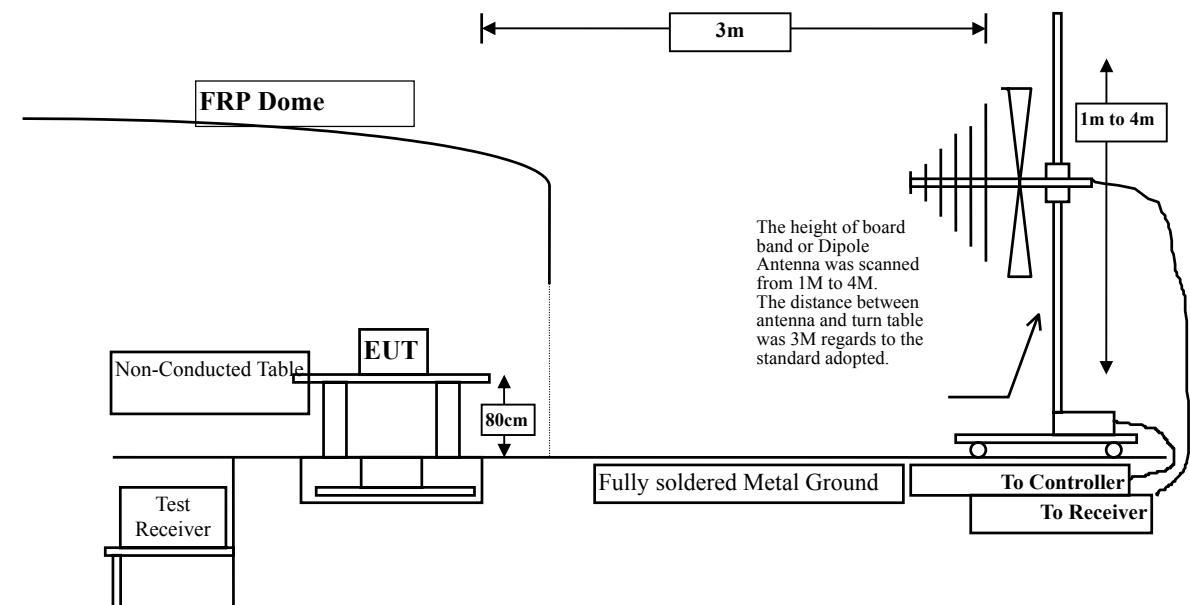
**5.1. Test Equipment**

The following test equipment are used during the radiated emission test:

Test Site	Equipment	Manufacturer	Model No./Serial No.	Last Cal.
Site # 1	X Test Receiver	R & S	ESCS 30 / 825442/14	May, 2002
	X Spectrum Analyzer	Advantest	R3261C / 71720140	May, 2002
	X Pre-Amplifier	HP	8447D/3307A01812	May, 2002
	X Bilog Antenna	Chase	CBL6112B / 12452	Sep., 2002
	X Horn Antenna	EM	EM6917 / 103325	May, 2002
Site # 2	Test Receiver	R & S	ESCS 30 / 825442/17	May, 2002
	Spectrum Analyzer	Advantest	R3261C / 71720609	May, 2002
	Pre-Amplifier	HP	8447D/3307A01814	May, 2002
	Bilog Antenna	Chase	CBL6112B / 2455	Sep., 2002
	Horn Antenna	EM	EM6917 / 103325	May, 2002

- Note: 1. All equipments that need to calibrate are with calibration period of 1 year.  
 2. Mark "X" test instruments are used to measure the final test results.

**5.2. Test Setup**



**5.3. Limits**

➤ **General Radiated Emission Limits**

Emissions radiated outside of the specified frequency bands, except for harmonics, shall be attenuated by at least 20dB below the level of the fundamental or to the general radiated emission limits in paragraph 15.209, whichever is the lesser attenuation.

<b>FCC Part 15 Subpart C Paragraph 15.209 Limits</b>		
Frequency MHz	uV/m @3m	dBuV/m@3m
30-88	100	40
88-216	150	43.5
216-960	200	46
Above 960	500	54

- Remarks :
1. RF Voltage (dBuV) = 20 log RF Voltage (uV)
  2. In the Above Table, the tighter limit applies at the band edges.
  3. Distance refers to the distance in meters between the measuring instrument antenna and the closed point of any part of the device or system.

#### 5.4. Test Procedure

The EUT and its simulators are placed on a turn table which is 0.8 meter above ground. The turn table can rotate 360 degrees to determine the position of the maximum emission level. The EUT was positioned such that the distance from antenna to the EUT was 3 meters.

The antenna can move up and down between 1 meter and 4 meters to find out the maximum emission level.

Both horizontal and vertical polarization of the antenna are set on measurement. In order to find the maximum emission, all of the interface cables must be manipulated according to ANSI C63.4:1992 on radiated measurement.

The additional latch filter below 1GHz was used to measure the level of harmonics radiated emission during field strength of harmonics measurement.

The bandwidth below 1GHz setting on the field strength meter (R&S Test Receiver ESCS 30 )is 120 kHz, above 1GHz are 1 MHz.

The frequency range from 30MHz to 10th harmonics is checked.

### 5.5. Test Result of Radiated Emission

Product : Cable Modem  
 Test Item : Harmonic Radiated Emission  
 Test Site : No.1 OATS  
 Test Mode : Channel 1 (11Mbps)

Frequency	Cable Loss	Probe Factor	PreAMP	Reading Level	Emission Level	Margin	Limit
MHz	dB	dB/m	dB	dBuV	dBuV/m	dB	dBuV/m

#### Horizontal

##### Peak Detector:

4824.040	3.76	33.50	34.68	48.96	51.54	22.46	74.00
7236.120	4.87	36.24	34.97	45.35	51.49	22.51	74.00
9648.200	5.61	37.43	35.10	44.66	52.59	21.41	74.00
12060.12	6.43	39.13	34.61	42.02	52.97	21.03	74.00

#### Vertical

##### Peak Detector:

4823.920	3.76	33.50	34.68	48.52	51.10	22.90	74.00
7236.200	4.87	36.24	34.97	44.82	50.96	23.04	74.00
9647.920	5.61	37.43	35.10	44.84	52.77	21.23	74.00
12060.16	6.43	39.13	34.61	41.90	52.85	21.15	74.00

#### Note:

1. All Readings below 1GHz are Quasi-Peak, above are average value.
2. Receiver setting (Peak Detector) : RBW:1MHz; VBW:1MHz; Span:100MHz ◦
3. Receiver setting (AVG Detector) : RBW:1MHz; VBW:30Hz; Span:100MHz ◦
4. Emission Level = Reading Level + Probe Factor + Cable Loss – PreAMP.
5. The average measurement was not performed when the peak measured data under the limit of average detection. If the readings given are average, peak measurement should also be supplied.

Product : Cable Modem  
 Test Item : Harmonic Radiated Emission  
 Test Site : No.1 OATS  
 Test Mode : Channel 6 (11Mbps)

Frequency	Cable Loss	Probe Factor	PreAMP	Reading Level	Emission Level	Margin	Limit
MHz	dB	dB/m	dB	dBuV	dBuV/m	dB	dBuV/m

### Horizontal

#### Peak Detector:

4874.120	3.78	33.56	34.69	50.88	53.53	20.47	74.00
7312.100	4.89	36.31	34.99	48.65	54.85	19.15	74.00
9748.120	5.67	37.45	35.10	44.78	52.79	21.21	74.00
12185.16	6.45	39.18	34.48	41.89	53.04	20.96	74.00

#### Average Detector:

7313.600	4.89	36.31	34.99	42.16	48.36	5.64	54.00
----------	------	-------	-------	-------	-------	------	-------

### Vertical

#### Peak Detector:

4873.880	3.78	33.56	34.69	49.32	51.97	22.03	74.00
7311.120	4.89	36.31	34.99	44.52	50.72	23.28	74.00
9748.120	5.67	37.45	35.10	44.98	52.99	21.01	74.00
12185.24	6.45	39.18	34.48	42.20	53.35	20.65	74.00

#### Note:

1. All Readings below 1GHz are Quasi-Peak, above are average value.
2. Receiver setting (Peak Detector) : RBW:1MHz; VBW:1MHz; Span:100MHz ◦
3. Receiver setting (AVG Detector) : RBW:1MHz; VBW:30Hz; Span:100MHz ◦
4. Emission Level = Reading Level + Probe Factor + Cable Loss – PreAMP.
5. The average measurement was not performed when the peak measured data under the limit of average detection. If the readings given are average, peak measurement should also be supplied.

Product : Cable Modem  
 Test Item : Harmonic Radiated Emission  
 Test Site : No.1 OATS  
 Test Mode : Channel 11 (11Mbps)

Frequency	Cable	Probe	PreAMP	Reading	Emission	Margin	Limit
MHz	Loss	Factor	dB	Level	Level	dB	dBuV/m
	dB	dB/m		dBuV	dBuV/m		

### Horizontal

#### Peak Detector:

4923.960	3.80	33.61	34.69	52.91	55.62	18.38	74.00
7387.300	4.91	36.39	35.02	51.91	58.19	15.81	74.00
9847.880	5.70	37.47	35.10	45.76	53.83	20.17	74.00
12310.04	6.46	39.23	34.35	42.10	53.45	20.55	74.00

#### Average Detector:

4923.960	3.80	33.61	34.69	48.35	51.06	2.94	54.00
7387.500	4.91	36.39	35.02	45.22	51.50	2.50	54.00

### Vertical

#### Peak Detector:

4924.000	3.80	33.61	34.69	51.33	54.04	19.96	74.00
7385.000	4.91	36.39	35.02	48.12	54.40	19.60	74.00
9847.920	5.70	37.47	35.10	45.50	53.57	20.43	74.00
12309.92	6.46	39.23	34.35	42.20	53.55	20.45	74.00

#### Average Detector:

4924.200	3.80	33.61	34.69	45.66	48.37	5.63	54.00
7388.500	4.91	36.39	35.02	40.13	46.41	7.59	54.00

#### Note:

1. All Readings below 1GHz are Quasi-Peak, above are average value.
2. Receiver setting (Peak Detector) : RBW:1MHz; VBW:1MHz; Span:100MHz ◦
3. Receiver setting (AVG Detector) : RBW:1MHz; VBW:30Hz; Span:100MHz ◦
4. Emission Level = Reading Level + Probe Factor + Cable Loss – PreAMP.
5. The average measurement was not performed when the peak measured data under the limit of average detection. If the readings given are average, peak measurement should also be supplied.



Product : Cable Modem  
 Test Item : General Radiated Emission  
 Test Site : No.1 OATS  
 Test Mode : Mode 1: OEM AD-121ANDT (Channel 1-11Mbps)

Frequency MHz	Cable Loss dB	Probe Factor dB/m	PreAMP dB	Reading Level dBuV	Emission Level dBuV/m	Margin dB	Limit dBuV/m
------------------	---------------------	-------------------------	--------------	--------------------------	-----------------------------	--------------	-----------------

### Horizontal

50.000	1.35	7.24	0.00	10.31	18.90	21.10	40.00
60.000	1.44	5.91	0.00	13.47	20.82	19.18	40.00
160.000	2.40	11.23	0.00	11.22	24.85	18.65	43.50
250.000	3.27	12.97	0.00	14.39	30.63	15.37	46.00
374.990	4.14	16.31	0.00	13.12	33.57	12.43	46.00
399.997	4.28	16.72	0.00	14.38	35.38	10.62	46.00
500.000	4.79	17.96	0.00	10.69	33.44	12.56	46.00
600.000	5.31	18.96	0.00	7.10	31.37	14.63	46.00
700.000	5.83	19.20	0.00	7.92	32.95	13.05	46.00
*748.500	6.09	20.29	0.00	14.50	40.88	5.12	46.00
896.000	6.87	20.83	0.00	5.94	33.63	12.37	46.00

### Vertical

66.205	1.50	8.34	0.00	21.85	31.68	8.32	40.00
150.000	2.31	10.38	0.00	18.19	30.88	12.62	43.50
160.000	2.40	9.82	0.00	15.88	28.10	15.40	43.50
250.000	3.27	13.32	0.00	9.02	25.61	20.39	46.00
300.000	3.76	13.79	0.00	14.50	32.04	13.96	46.00
384.000	4.19	15.71	0.00	11.79	31.69	14.31	46.00
450.000	4.53	16.58	0.00	11.30	32.41	13.59	46.00
699.985	5.83	19.81	0.00	8.36	34.00	12.00	46.00
768.000	6.20	20.20	0.00	6.77	33.17	12.83	46.00
*896.000	6.87	21.23	0.00	10.38	38.48	7.52	46.00

### Note:

1. All Readings below 1GHz are Quasi-Peak, above are average value.
2. “ \* ”, means this data is the worst emission level.
3. Emission Level = Reading Level + Probe Factor + Cable Loss.

Product : Cable Modem  
 Test Item : General Radiated Emission  
 Test Site : No.1 OATS  
 Test Mode : Mode 1: OEM AD-121ANDT (Channel 6-11Mbps)

Frequency MHz	Cable Loss dB	Probe Factor dB/m	PreAMP dB	Reading Level dBuV	Emission Level dBuV/m	Margin dB	Limit dBuV/m
------------------	---------------------	-------------------------	--------------	--------------------------	-----------------------------	--------------	-----------------

**Horizontal**

50.000	1.35	7.24	0.00	10.31	18.90	21.10	40.00
60.000	1.44	5.91	0.00	13.47	20.82	19.18	40.00
160.000	2.40	11.23	0.00	11.22	24.85	18.65	43.50
250.000	3.27	12.97	0.00	14.39	30.63	15.37	46.00
300.000	3.76	13.53	0.00	18.41	35.69	10.31	46.00
399.997	4.28	16.72	0.00	14.38	35.38	10.62	46.00
500.000	4.79	17.96	0.00	10.69	33.44	12.56	46.00
600.000	5.31	18.96	0.00	10.24	34.51	11.49	46.00
*748.500	6.09	20.29	0.00	15.84	42.22	3.78	46.00
896.000	6.87	20.83	0.00	7.04	34.73	11.27	46.00

**Vertical**

50.000	1.35	8.50	0.00	21.20	31.05	8.95	40.00
*81.165	1.65	9.51	0.00	21.87	33.03	6.97	40.00
150.000	2.31	10.38	0.00	14.94	27.63	15.87	43.50
192.000	2.71	8.24	0.00	13.79	24.74	18.76	43.50
250.000	3.27	13.32	0.00	9.30	25.89	20.11	46.00
300.000	3.76	13.79	0.00	14.50	32.04	13.96	46.00
450.000	4.53	16.58	0.00	11.30	32.41	13.59	46.00
600.000	5.31	19.06	0.00	13.68	38.05	7.95	46.00
699.985	5.83	19.81	0.00	8.36	34.00	12.00	46.00
748.500	6.09	20.18	0.00	11.54	37.81	8.19	46.00
840.000	6.56	20.70	0.00	7.86	35.12	10.88	46.00
896.000	6.87	21.23	0.00	10.38	38.48	7.52	46.00

**Note:**

1. All Readings below 1GHz are Quasi-Peak, above are average value.
2. “ \* ”, means this data is the worst emission level.
3. Emission Level = Reading Level + Probe Factor + Cable Loss.

Product : Cable Modem  
 Test Item : General Radiated Emission  
 Test Site : No.1 OATS  
 Test Mode : Mode 1: OEM AD-121ANDT (Channel 11-11Mbps)

Frequency MHz	Cable Loss dB	Probe Factor dB/m	PreAMP dB	Reading Level dBuV	Emission Level dBuV/m	Margin dB	Limit dBuV/m
------------------	---------------------	-------------------------	--------------	--------------------------	-----------------------------	--------------	-----------------

**Horizontal**

60.000	1.44	5.91	0.00	13.47	20.82	19.18	40.00
160.000	2.40	11.23	0.00	11.22	24.85	18.65	43.50
250.000	3.27	12.97	0.00	14.39	30.63	15.37	46.00
300.000	3.76	13.53	0.00	18.41	35.69	10.31	46.00
374.990	4.14	16.31	0.00	13.12	33.57	12.43	46.00
500.000	4.79	17.96	0.00	10.69	33.44	12.56	46.00
700.000	5.83	19.20	0.00	7.92	32.95	13.05	46.00
*748.500	6.09	20.29	0.00	15.84	42.22	3.78	46.00
896.000	6.87	20.83	0.00	7.04	34.73	11.27	46.00

**Vertical**

50.000	1.35	8.50	0.00	18.27	28.12	11.88	40.00
*81.165	1.65	9.51	0.00	21.87	33.03	6.97	40.00
150.000	2.31	10.38	0.00	18.19	30.88	12.62	43.50
192.000	2.71	8.24	0.00	13.79	24.74	18.76	43.50
250.000	3.27	13.32	0.00	9.30	25.89	20.11	46.00
300.000	3.76	13.79	0.00	14.50	32.04	13.96	46.00
384.000	4.19	15.71	0.00	11.79	31.69	14.31	46.00
400.000	4.28	16.51	0.00	15.84	36.62	9.38	46.00
500.000	4.79	17.60	0.00	9.59	31.98	14.02	46.00
699.985	5.83	19.81	0.00	8.36	34.00	12.00	46.00
748.500	6.09	20.18	0.00	11.54	37.81	8.19	46.00
840.000	6.56	20.70	0.00	7.86	35.12	10.88	46.00
896.000	6.87	21.23	0.00	10.38	38.48	7.52	46.00

**Note:**

1. All Readings below 1GHz are Quasi-Peak, above are average value.
2. “ \* ”, means this data is the worst emission level.
3. Emission Level = Reading Level + Probe Factor + Cable Loss.

Product : Cable Modem  
 Test Item : General Radiated Emission  
 Test Site : No.1 OATS  
 Test Mode : Mode 2: DELTA ADP-12SB(Channel 1-11Mbps)

Frequency	Cable	Probe	PreAMP	Reading	Emission	Margin	Limit
MHz	Loss	Factor	dB	Level	Level	dB	dBuV/m
	dB	dB/m		dBuV	dBuV/m		

**Horizontal**

50.000	1.35	7.24	0.00	10.31	18.90	21.10	40.00
60.000	1.44	5.91	0.00	13.47	20.82	19.18	40.00
150.000	2.31	11.96	0.00	19.52	33.79	9.71	43.50
200.000	2.78	10.14	0.00	16.94	29.86	13.64	43.50
300.000	3.76	13.53	0.00	17.72	35.00	11.00	46.00
374.990	4.14	16.31	0.00	13.12	33.57	12.43	46.00
399.997	4.28	16.72	0.00	14.38	35.38	10.62	46.00
500.000	4.79	17.96	0.00	10.69	33.44	12.56	46.00
600.000	5.31	18.96	0.00	9.06	33.33	12.67	46.00
700.000	5.83	19.20	0.00	7.92	32.95	13.05	46.00
*748.500	6.09	20.29	0.00	14.50	40.88	5.12	46.00
896.000	6.87	20.83	0.00	9.37	37.06	8.94	46.00

**Vertical**

138.413	2.20	11.60	0.00	20.25	34.05	9.45	43.50
150.000	2.31	10.38	0.00	14.94	27.63	15.87	43.50
160.000	2.40	9.82	0.00	15.88	28.10	15.40	43.50
250.000	3.27	13.32	0.00	9.02	25.61	20.39	46.00
300.000	3.76	13.79	0.00	13.29	30.83	15.17	46.00
384.000	4.19	15.71	0.00	16.59	36.49	9.51	46.00
400.000	4.28	16.51	0.00	15.84	36.62	9.38	46.00
450.000	4.53	16.58	0.00	11.30	32.41	13.59	46.00
500.000	4.79	17.60	0.00	9.59	31.98	14.02	46.00
600.000	5.31	19.06	0.00	13.68	38.05	7.95	46.00
699.985	5.83	19.81	0.00	8.36	34.00	12.00	46.00
748.500	6.09	20.18	0.00	11.54	37.81	8.19	46.00
768.000	6.20	20.20	0.00	6.77	33.17	12.83	46.00
840.000	6.56	20.70	0.00	7.86	35.12	10.88	46.00
*896.000	6.87	21.23	0.00	9.96	38.06	7.94	46.00

Note:

1. All Readings below 1GHz are Quasi-Peak, above are average value.
2. “ \* ”, means this data is the worst emission level.
3. Emission Level = Reading Level + Probe Factor + Cable Loss.

Product : Cable Modem  
 Test Item : General Radiated Emission  
 Test Site : No.1 OATS  
 Test Mode : Mode 2: DELTA ADP-12SB (Channel 6-11Mbps)

Frequency	Cable	Probe	PreAMP	Reading	Emission	Margin	Limit
MHz	Loss	Factor	dB	Level	Level	dB	dBuV/m
	dB	dB/m		dBuV	dBuV/m		

**Horizontal**

50.000	1.35	7.24	0.00	10.31	18.90	21.10	40.00
143.910	2.24	12.06	0.00	9.36	23.67	19.83	43.50
160.000	2.40	11.23	0.00	11.22	24.85	18.65	43.50
200.000	2.78	10.14	0.00	16.94	29.86	13.64	43.50
250.000	3.27	12.97	0.00	14.39	30.63	15.37	46.00
300.000	3.76	13.53	0.00	18.41	35.69	10.31	46.00
399.997	4.28	16.72	0.00	14.38	35.38	10.62	46.00
500.000	4.79	17.96	0.00	10.69	33.44	12.56	46.00
700.000	5.83	19.20	0.00	7.92	32.95	13.05	46.00
*748.500	6.09	20.29	0.00	10.76	37.14	8.86	46.00
896.000	6.87	20.83	0.00	9.37	37.06	8.94	46.00
999.984	7.40	21.55	0.00	3.21	32.16	21.84	54.00

**Vertical**

50.000	1.35	8.50	0.00	20.65	30.50	9.50	40.00
*81.165	1.65	9.51	0.00	21.87	33.03	6.97	40.00
150.000	2.31	10.38	0.00	18.19	30.88	12.62	43.50
160.000	2.40	9.82	0.00	17.33	29.55	13.95	43.50
250.000	3.27	13.32	0.00	9.30	25.89	20.11	46.00
384.000	4.19	15.71	0.00	16.59	36.49	9.51	46.00
400.000	4.28	16.51	0.00	15.84	36.62	9.38	46.00
450.000	4.53	16.58	0.00	11.30	32.41	13.59	46.00
600.000	5.31	19.06	0.00	13.68	38.05	7.95	46.00
699.985	5.83	19.81	0.00	8.36	34.00	12.00	46.00
768.000	6.20	20.20	0.00	6.77	33.17	12.83	46.00
840.000	6.56	20.70	0.00	7.86	35.12	10.88	46.00
896.000	6.87	21.23	0.00	10.38	38.48	7.52	46.00

Note:

1. All Readings below 1GHz are Quasi-Peak, above are average value.
2. “ \* ”, means this data is the worst emission level.
3. Emission Level = Reading Level + Probe Factor + Cable Loss.

Product : Cable Modem  
 Test Item : General Radiated Emission  
 Test Site : No.1 OATS  
 Test Mode : Mode 2: DELTA ADP-12SB (Channel 11-11Mbps)

Frequency	Cable	Probe	PreAMP	Reading	Emission	Margin	Limit
MHz	Loss	Factor	dB	Level	Level	dB	dBuV/m
	dB	dB/m		dBuV	dBuV/m		

**Horizontal**

60.000	1.44	5.91	0.00	13.47	20.82	19.18	40.00
150.000	2.31	11.96	0.00	19.52	33.79	9.71	43.50
200.000	2.78	10.14	0.00	16.94	29.86	13.64	43.50
300.000	3.76	13.53	0.00	17.72	35.00	11.00	46.00
399.997	4.28	16.72	0.00	14.38	35.38	10.62	46.00
500.000	4.79	17.96	0.00	10.69	33.44	12.56	46.00
600.000	5.31	18.96	0.00	7.10	31.37	14.63	46.00
700.000	5.83	19.20	0.00	7.92	32.95	13.05	46.00
*748.500	6.09	20.29	0.00	14.50	40.88	5.12	46.00
896.000	6.87	20.83	0.00	5.94	33.63	12.37	46.00
999.984	7.40	21.55	0.00	3.21	32.16	21.84	54.00

**Vertical**

50.000	1.35	8.50	0.00	21.20	31.05	8.95	40.00
138.413	2.20	11.60	0.00	20.25	34.05	9.45	43.50
160.000	2.40	9.82	0.00	17.33	29.55	13.95	43.50
250.000	3.27	13.32	0.00	9.30	25.89	20.11	46.00
300.000	3.76	13.79	0.00	14.50	32.04	13.96	46.00
384.000	4.19	15.71	0.00	11.79	31.69	14.31	46.00
450.000	4.53	16.58	0.00	11.30	32.41	13.59	46.00
600.000	5.31	19.06	0.00	13.68	38.05	7.95	46.00
748.500	6.09	20.18	0.00	8.04	34.31	11.69	46.00
768.000	6.20	20.20	0.00	6.77	33.17	12.83	46.00
*896.000	6.87	21.23	0.00	10.38	38.48	7.52	46.00

**Note:**

1. All Readings below 1GHz are Quasi-Peak, above are average value.
2. “ \* ”, means this data is the worst emission level.
3. Emission Level = Reading Level + Probe Factor + Cable Loss.

## 6. Band Edge

### 6.1. Test Equipment

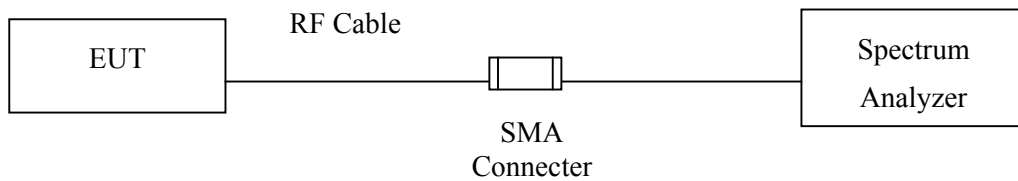
The following test equipments are used during the band edge tests:

	Equipment	Manufacturer	Model No./Serial No.	Last Cal.
X	Spectrum Analyzer	Advantest	R3272 / 72421194	May, 2002
X	Test Receiver	R & S	ESCS 30 / 825442/14	May, 2002
X	Spectrum Analyzer	Advantest	R3261C / 71720140	May, 2002
X	Pre-Amplifier	HP	8447D/3307A01812	May, 2002
X	Bilog Antenna	Chase	CBL6112B / 12452	Sep., 2002
X	Horn Antenna	EM	EM6917 / 103325	May, 2002

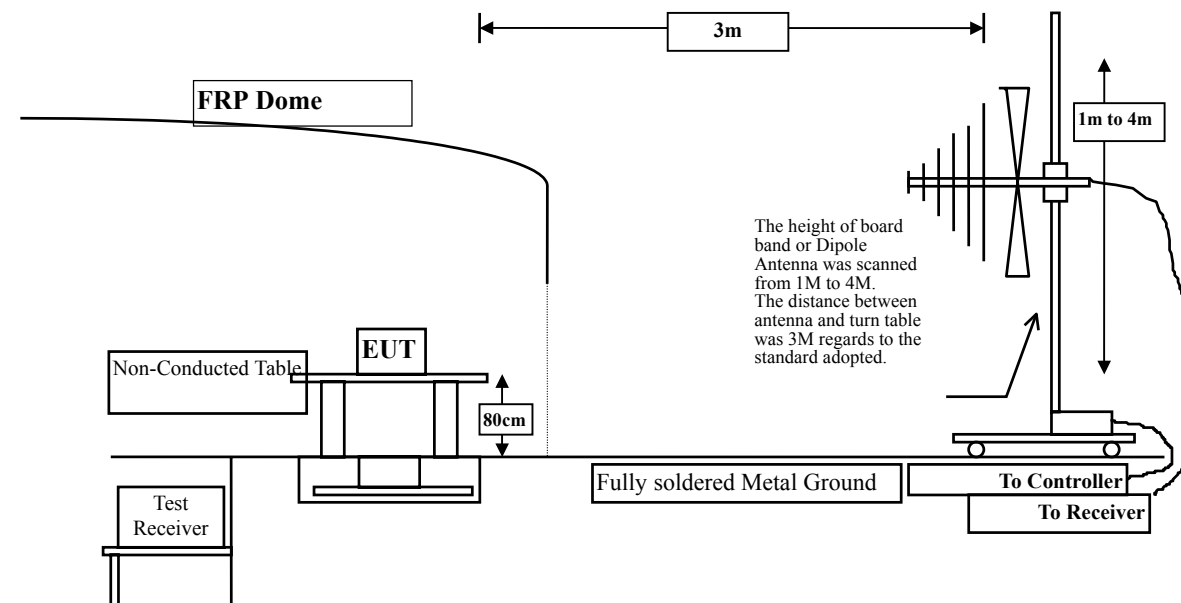
- Note: 1. All equipments that need to calibrate are with calibration period of 1 year.  
 2. Mark "X" test instruments are used to measure the final test results.

### 6.2. Test Setup

#### RF Conducted Measurement:



#### RF Radiated Measurement:



### 6.3. Limits

In any 100 kHz bandwidth outside the frequency band in which the spread spectrum intentional radiator is operating, the radio frequency power that is produced by the intentional radiator shall be at least 20 dB below that in the 100 kHz bandwidth within the band that contains the highest level of the desired power, based on either an RF conducted or a radiated measurement. Attenuation below the general limits specified in Section 15.209(a) is not required. In addition, radiated emissions which fall in the restricted bands, as defined in Section 15.205(a), must also comply with the radiated emission limits specified in Section 15.209(a) (see Section 15.205(c)).

### 6.4. Test Procedure

The EUT and its simulators are placed on a turn table which is 0.8 meter above ground. The turn table can rotate 360 degrees to determine the position of the maximum emission level. The EUT was positioned such that the distance from antenna to the EUT was 3 meters.

The antenna can move up and down between 1 meter and 4 meters to find out the maximum emission level.

Both horizontal and vertical polarization of the antenna are set on measurement. In order to find the maximum emission, all of the interface cables must be manipulated according to ANSI C63.4:1992 on radiated measurement.

The bandwidth below 1GHz setting on the field strength meter (R&S Test Receiver ESCS 30 )is 120 kHz, above 1GHz are 1 MHz.



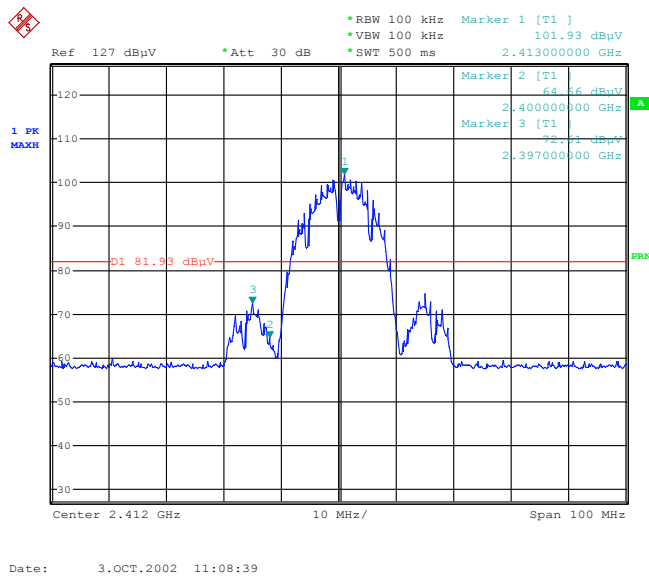
### 6.5. Test Result of Band Edge

Product : Cable Modem  
 Test Item : Band Edge  
 Test Site : No.1 OATS  
 Test Mode : Channel 1 (11Mbps)

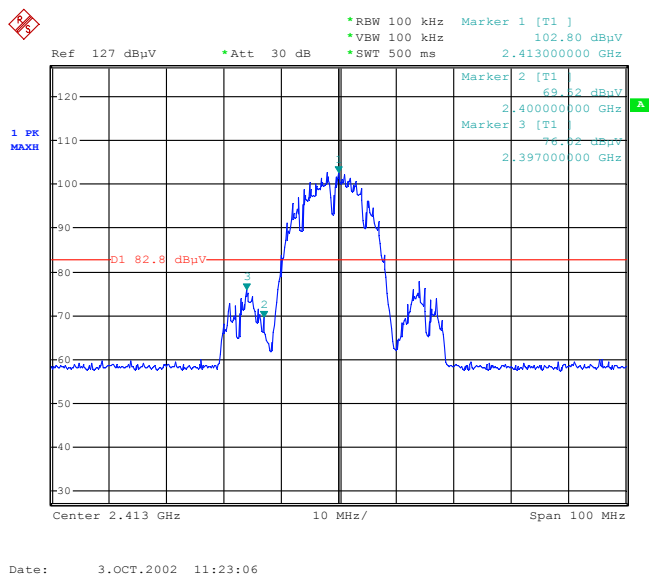
#### RF Radiated Measurement:

Channel No.	Frequency (MHz)	Required Limit (dBc)	Result
1 (Horizontal)	<2400	>20	Pass
1 (Vertical)	<2400	>20	Pass

**Figure Channel 1:** (Horizontal)



**Figure Channel 1:** (Vertical)



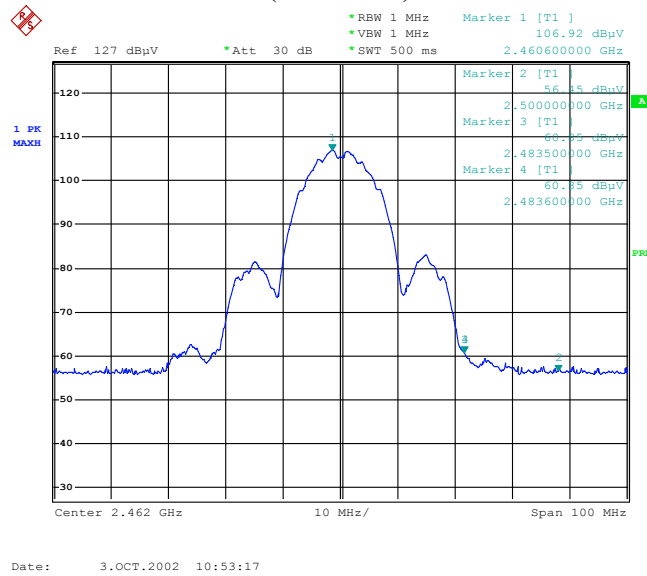
Product : Cable Modem  
 Test Item : Band Edge  
 Test Site : No.1 OATS  
 Test Mode : Channel 11 (11Mbps)

**RF Radiated Measurement: (Peak Detector)**

Channel No.	Frequency (MHz)	Reading Level (dBUV)	Probe Factor (dB/m)	Cable Loss (dB)	PreAMP (dB)	Emission Level (dBUV/m)	Limit (dBUV/m)	Result
11(Horizontal)	2483.60	60.85	29.60	2.50	34.95	58.00	74	Pass
11 (Vertical)	2483.60	62.86	29.60	2.50	34.95	60.01	74	Pass

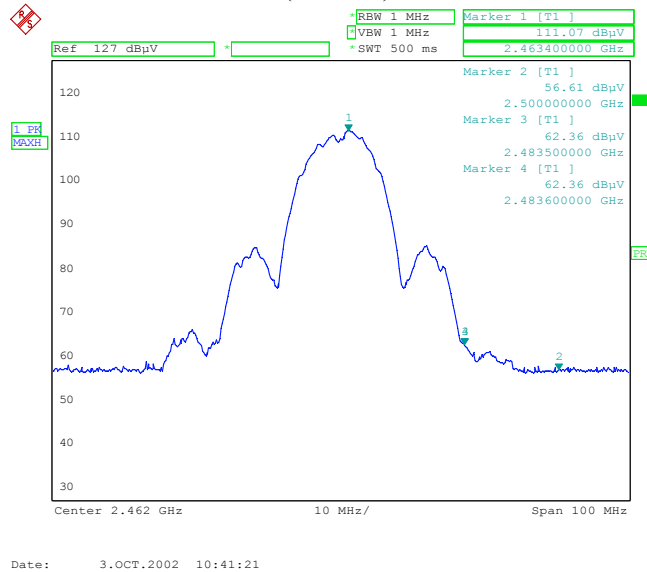
**Figure Channel 11:**

(Horizontal)



**Figure Channel 11:**

(Vertical)



Note: The average measurement was not performed when the peak measured data under the limit of average detection. If the readings given are average, peak measurement should also be supplied.

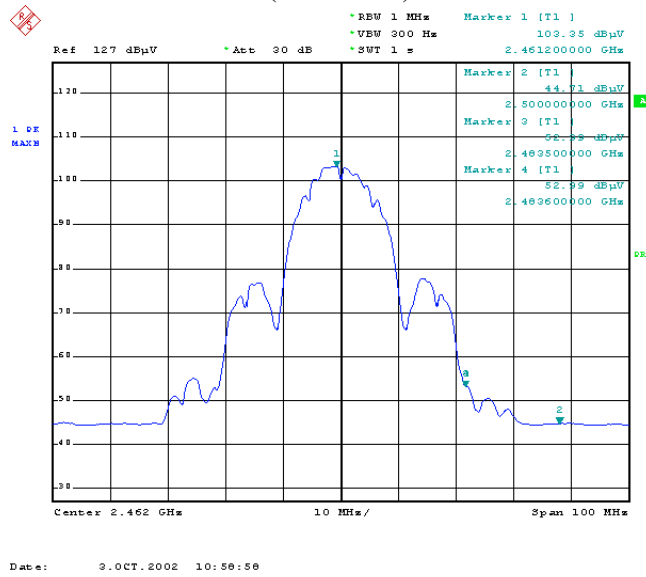
Product : Cable Modem  
 Test Item : Band Edge  
 Test Site : No.1 OATS  
 Test Mode : Channel 11 (11Mbps)

**RF Radiated Measurement: (Average Detector)**

Channel No.	Frequency (MHz)	Reading Level (dBUV)	Probe Factor (dB/m)	Cable Loss (dB)	PreAMP (dB)	Emission Level (dBUV/m)	Limit (dBUV/m)	Result
11(Horizontal)	2483.60	52.99	29.60	2.50	34.95	50.14	54	Pass
11 (Vertical)	2483.60	54.10	29.60	2.50	34.95	51.25	54	Pass

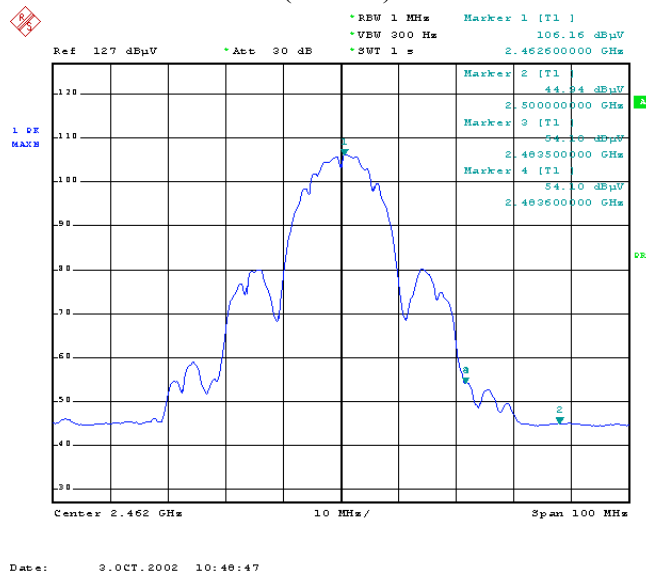
**Figure Channel 11:**

(Horizontal)



**Figure Channel 11:**

(Vertical)



Note: The average measurement was not performed when the peak measured data under the limit of average detection. If the readings given are average, peak measurement should also be supplied.

## 7. Occupied Bandwidth

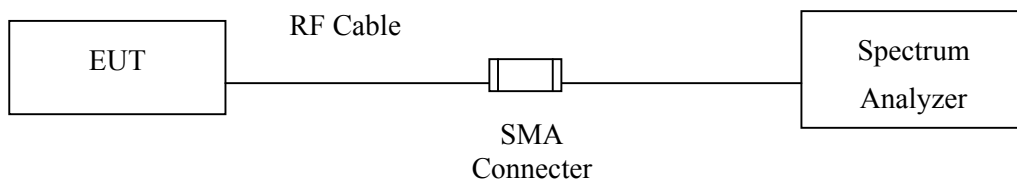
### 7.1. Test Equipment

The following test equipments are used during the radiated emission tests:

	Equipment	Manufacturer	Model No./Serial No.	Last Cal.
X	Spectrum Analyzer	Advantest	R3272 / 72421194	May, 2002

Note: 1. All equipment upon which need to calibrated are with calibration period of 1 year.  
 2. Mark "X" test instruments are used to measure the final test results.

### 7.2. Test Setup



### 7.3. Limits

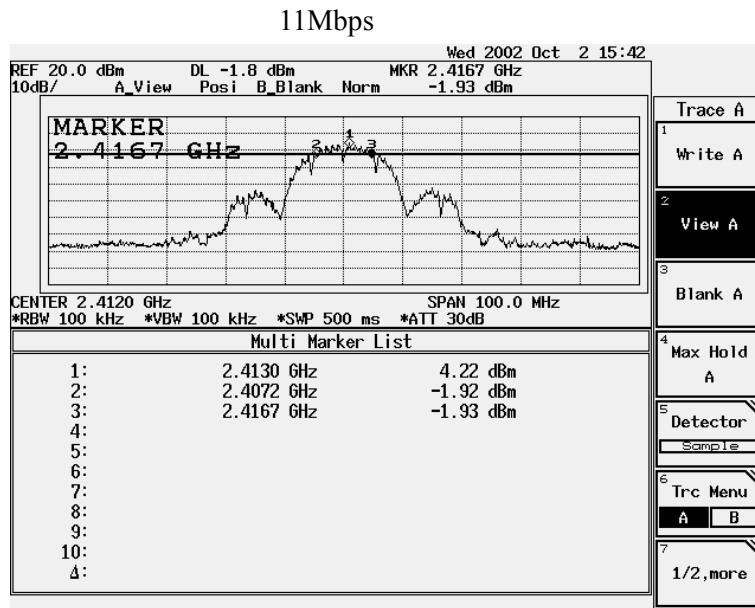
The minimum bandwidth shall be at least 500kHz.

### 7.4. Test Result of Occupied Bandwidth

Product : Cable Modem  
 Test Item : Occupied Bandwidth  
 Test Site : No.1 OATS  
 Test Mode : Channel 1

Channel No.	Frequency (MHz)	Measurement Level (kHz)	Required Limit (kHz)	Result
1 (11Mbps)	2413.00	9500	>500	Pass

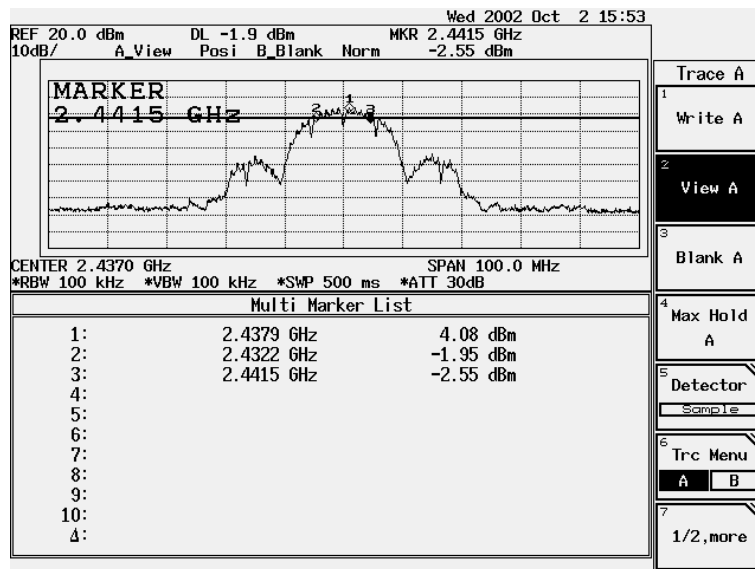
Figure Channel 1:



Product : Cable Modem  
 Test Item : Occupied Bandwidth  
 Test Site : No.1 OATS  
 Test Mode : Channel 6

Channel No.	Frequency (MHz)	Measurement Level (kHz)	Required Limit (kHz)	Result
6 (11Mbps)	2437.90	9300	>500	Pass

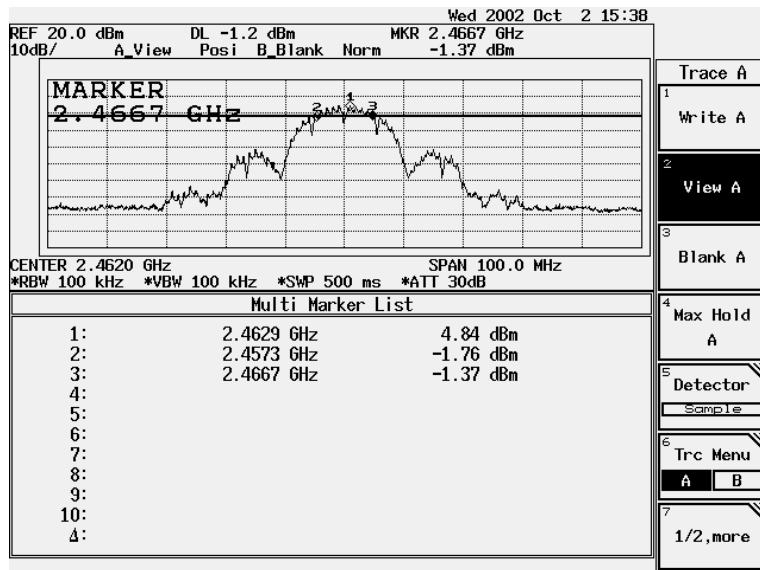
Figure Channel 6: 11Mbps



Product : Cable Modem  
 Test Item : Occupied Bandwidth  
 Test Site : No.1 OATS  
 Test Mode : Channel 11

Channel No.	Frequency (MHz)	Measurement Level (kHz)	Required Limit (kHz)	Result
11 (11Mbps)	2462.90	9400	>500	Pass

**Figure Channel 11:** 11Mbps



## 8. Power Density

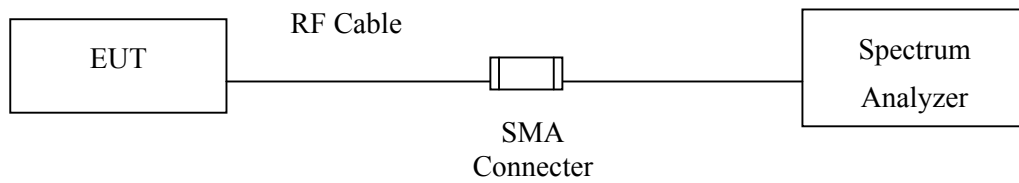
### 8.1. Test Equipment

The following test equipments are used during the radiated emission tests:

	Equipment	Manufacturer	Model No./Serial No.	Last Cal.
X	Spectrum Analyzer	Advantest	R3272 / 72421194	May, 2002

Note: 1. All equipment upon which need to calibrated are with calibration period of 1 year.  
 2. Mark "X" test instruments are used to measure the final test results.

### 8.2. Test Setup



### 8.3. Limits

The transmitted power density averaged over any 1 second interval shall not be greater +8dBm in any 3kHz bandwidth.

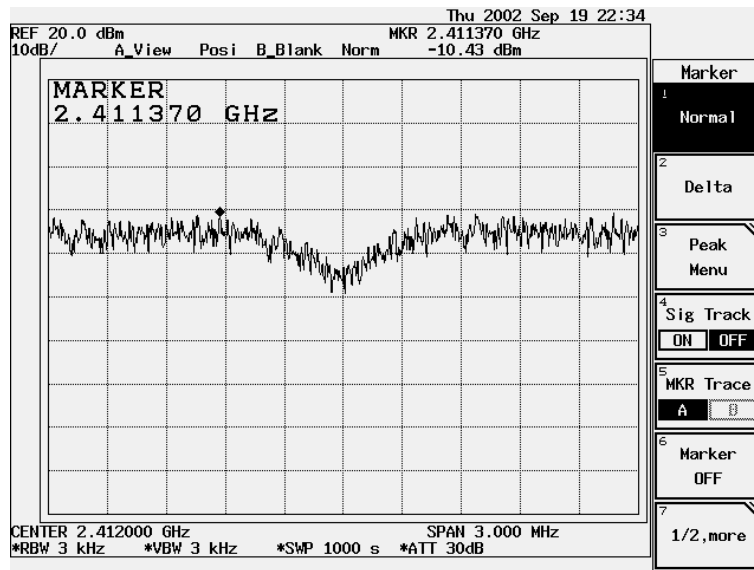


### 8.4. Test Result of Power Density

Product : Cable Modem  
 Test Item : Power Density  
 Test Site : No.1 OATS  
 Test Mode : Channel 1

Channel No.	Frequency (MHz)	Measurement Level (dBm)	Required Limit (dBm)	Result
1 (11Mbps)	2411.370	-10.43	< 8dBm	Pass

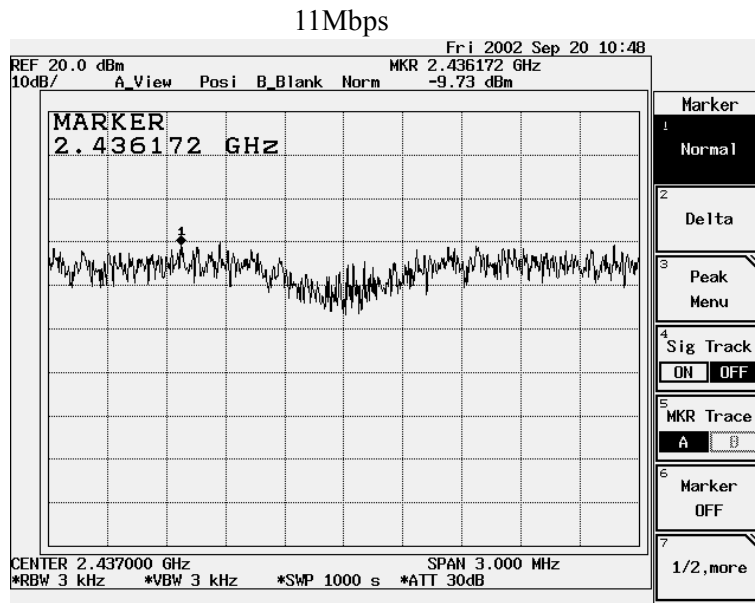
**Figure Channel 1:** 11Mbps



Product : Cable Modem  
 Test Item : Power Density  
 Test Site : No.1 OATS  
 Test Mode : Channel 6

Channel No.	Frequency (MHz)	Measurement Level (dBm)	Required Limit (dBm)	Result
6 (11Mbps)	2436.172	-9.73	< 8dBm	Pass

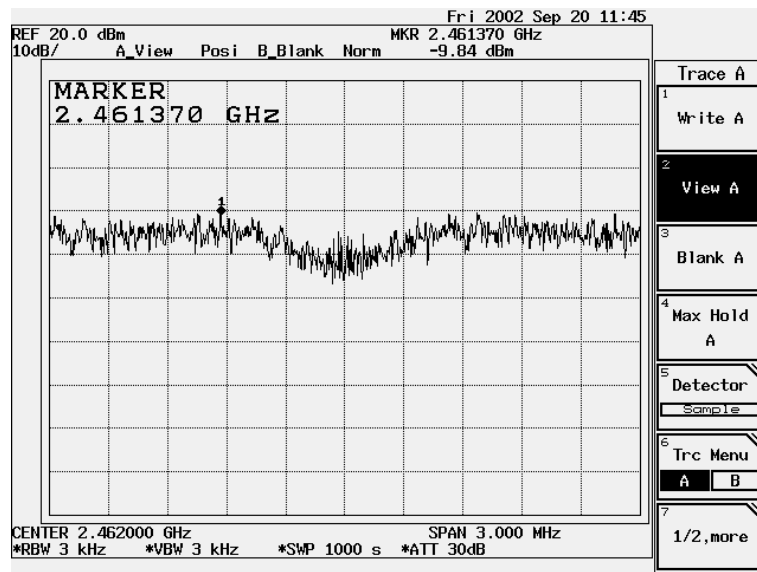
**Figure Channel 6:**



Product : Cable Modem  
 Test Item : Power Density  
 Test Site : No.1 OATS  
 Test Mode : Channel 11

Channel No.	Frequency (MHz)	Measurement Level (dBm)	Required Limit (dBm)	Result
11 (11Mbps)	2461.370	-9.84	< 8dBm	Pass

**Figure Channel 11:** 11Mbps



## 9. Processing Gain

### 9.1. Limits

The processing gain shall be at least 10 dB.

### 9.2. Test Procedure

The processing gain of this spread spectrum was measured the CW jamming method. The Section 9.1 illustrates the measurement setup. The output power of the spread spectrum transmitter is fixed and the output power of jammer is adjustable. The frequency of jammer was stepped through the pass band of nominal channel in 50kHz steps. In each frequency step of the jammer, the output power of jammer is adjusted to cause the Bit Error Rate (BER) to be  $1.0 \times 10^{-6}$ . The power levels are recorded to calculate the J/S as shown in Table 1.

Calculation of Processing Gain:

The processing gain was determined by measuring the jamming margin of the EUT and using the following formula:

$$G_p = (S/N)_o + M_j + L_{sys}$$

Where  $(S/N)_o$  is the required signal to noise ratio at the receiver output

$M_j$  is the jammer to signal ratio (J/S)

$L_{sys}$  is the system loss

The  $(S/N)_o$  is calculated from:

$$P_e = 1/2 \exp(-1/2(S/N)_o) \quad ; \quad P_e = \text{probability of error (BER)}$$

For the  $P_e(\text{BER}) = 1.0 \times 10^{-6}$ , the required  $(S/N)_o$  is 16.4dB

From Measurement, the minimum J/S( $M_j$ ) is  $\geq 8.4\text{dB}$

We assume the system loss is 2dB.

Therefore the processing gain is calculated below:

$$G_p = (S/N)_o + M_j + L_{sys} = 16.4 + (-8.4) + 2 = 10 \text{ (dB)}$$

### 9.3. Test Result of Processing Gain

As EUT power is less than 20dBm, processing gain is not applicable.

## EMI Reduction Method During Compliance Testing

No modification was made during testing.

## Attachment 1: EUT Test Photographs

**Attachment 1: EUT Test Setup Photographs**

Front View of Conducted Test (Mode 1)



Back View of Conducted Test (Mode 1)





Front View of Conducted Test (Mode 2)



Back View of Conducted Test (Mode 2)



Front View of Radiated Test (Mode 1)



Back View of Radiated Test (Mode 1)





Front View of Radiated Test (Mode 2)



Back View of Radiated Test (Mode 2)



Front View of Radiated Test (Horn)



## Attachment 2: EUT Detailed Photographs

**Attachment 2 : EUT Detailed Photographs**

Mode 1

(1) EUT Photo



(2) EUT Photo





Mode 2

(3) EUT Photo



(4) EUT Photo



Mode 1

(5) EUT Photo



(6) EUT Photo





Mode 2

(7) EUT Photo



(8) EUT Photo



(9) EUT Photo

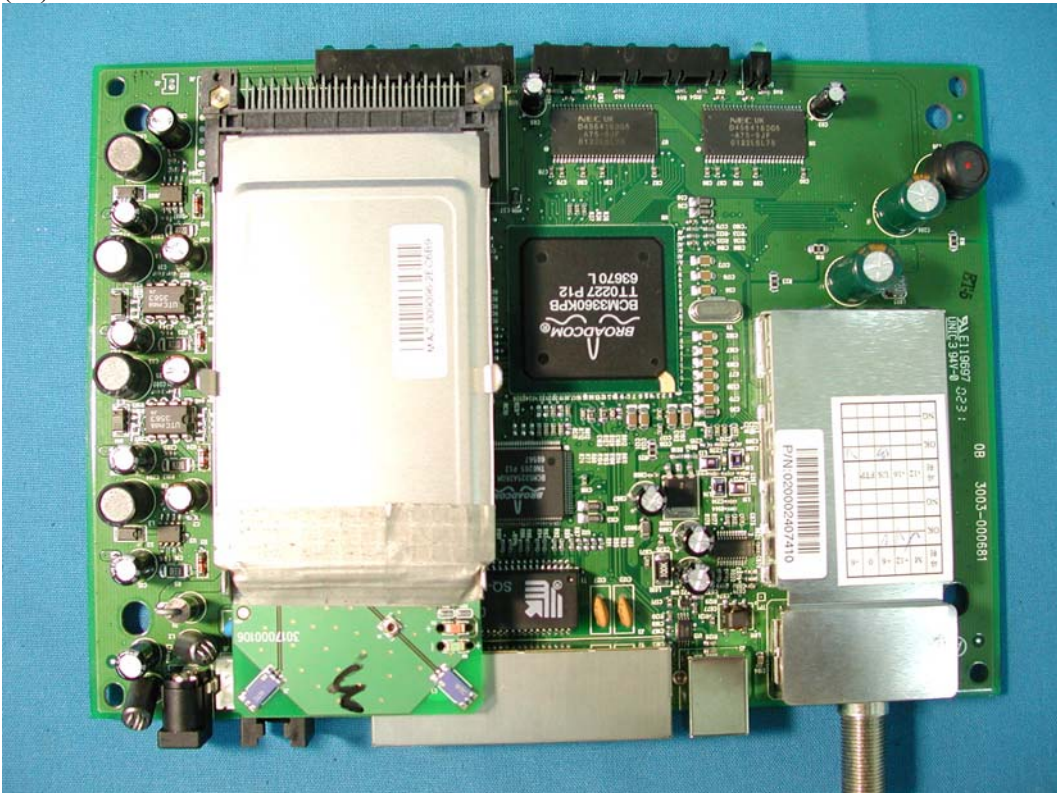


(10) EUT Photo

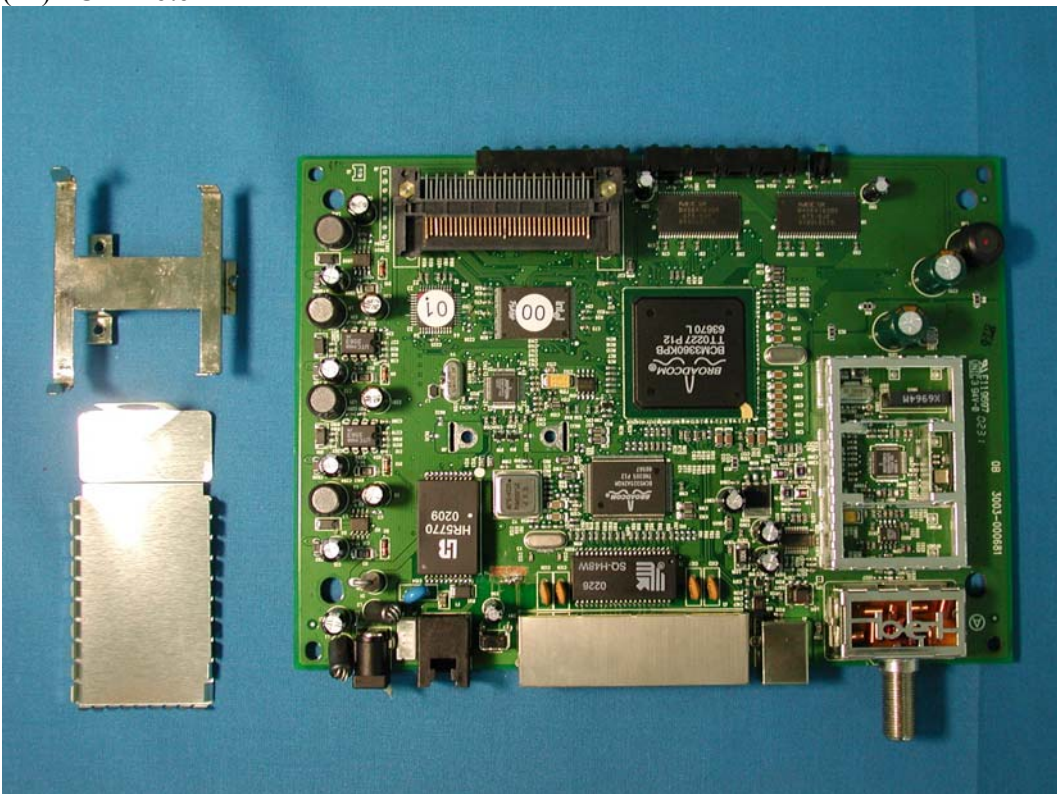




(11) EUT Photo

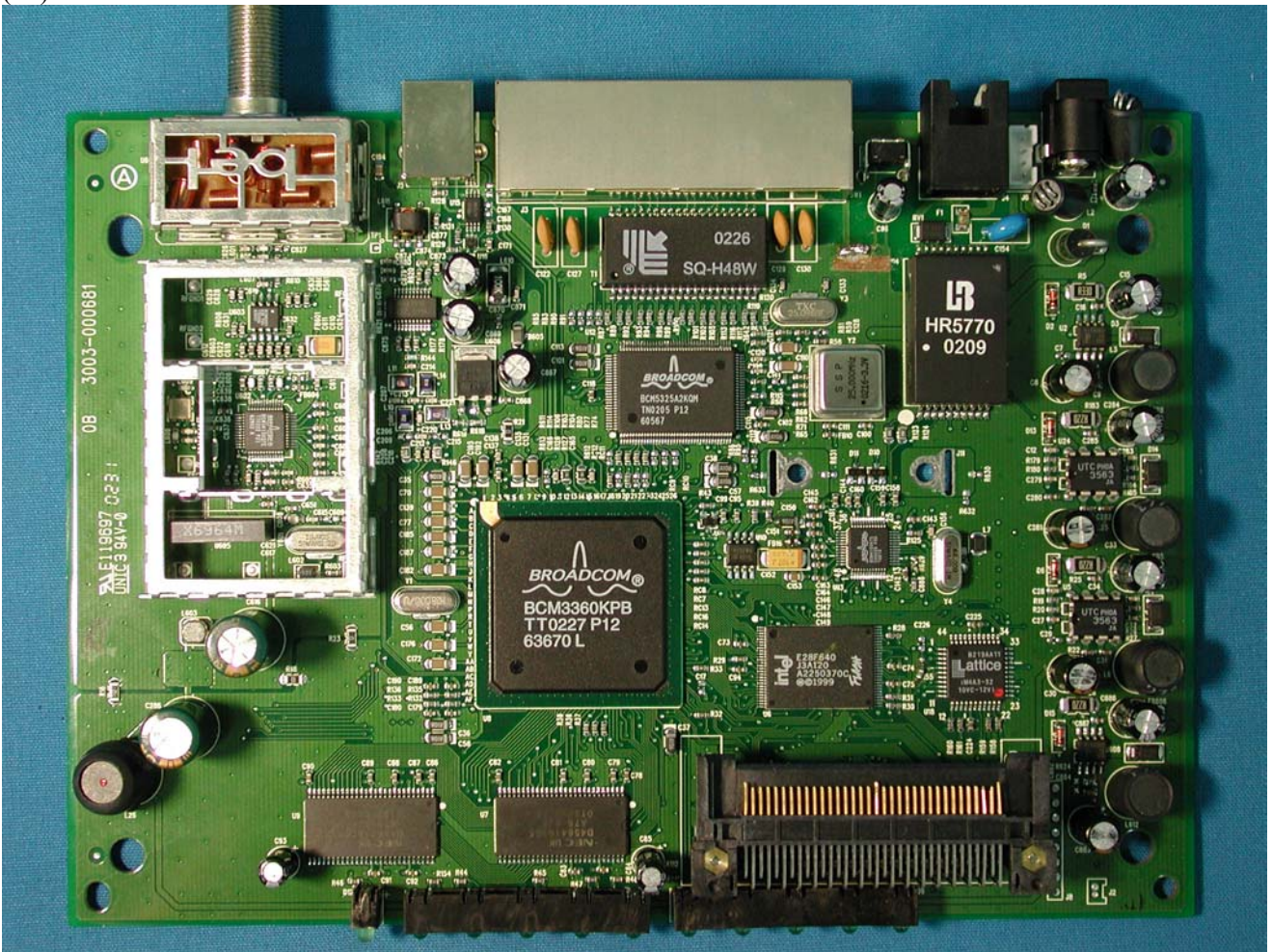


(12) EUT Photo





(13) EUT Photo

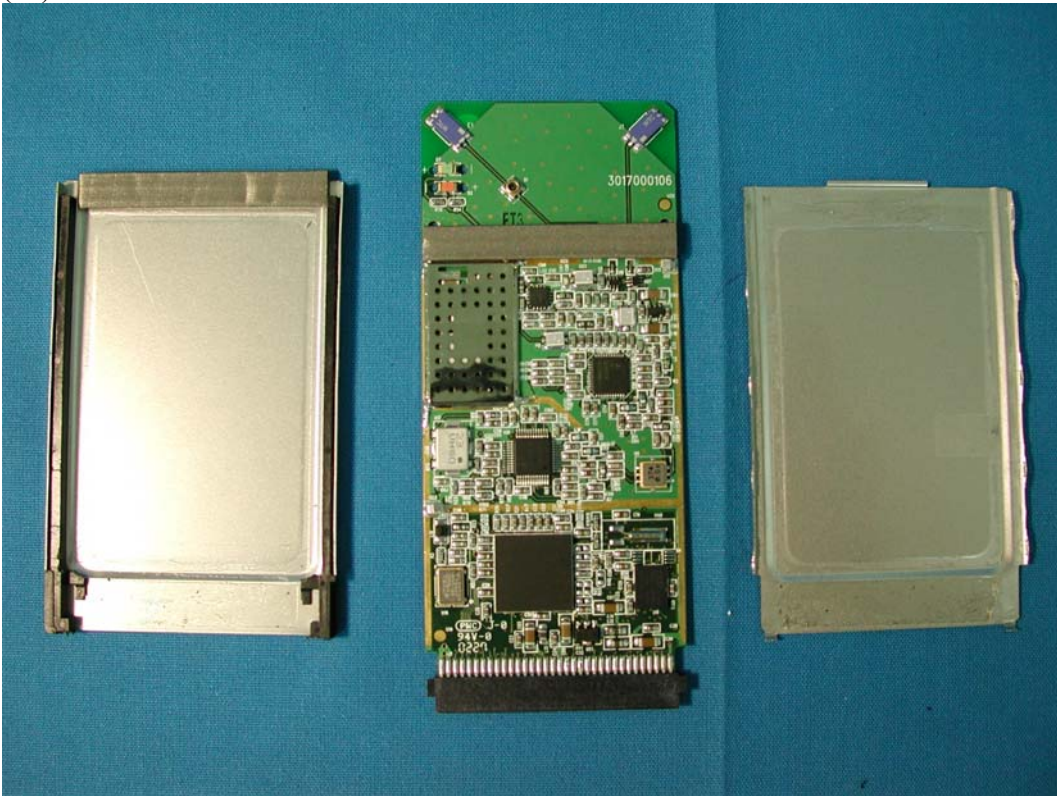




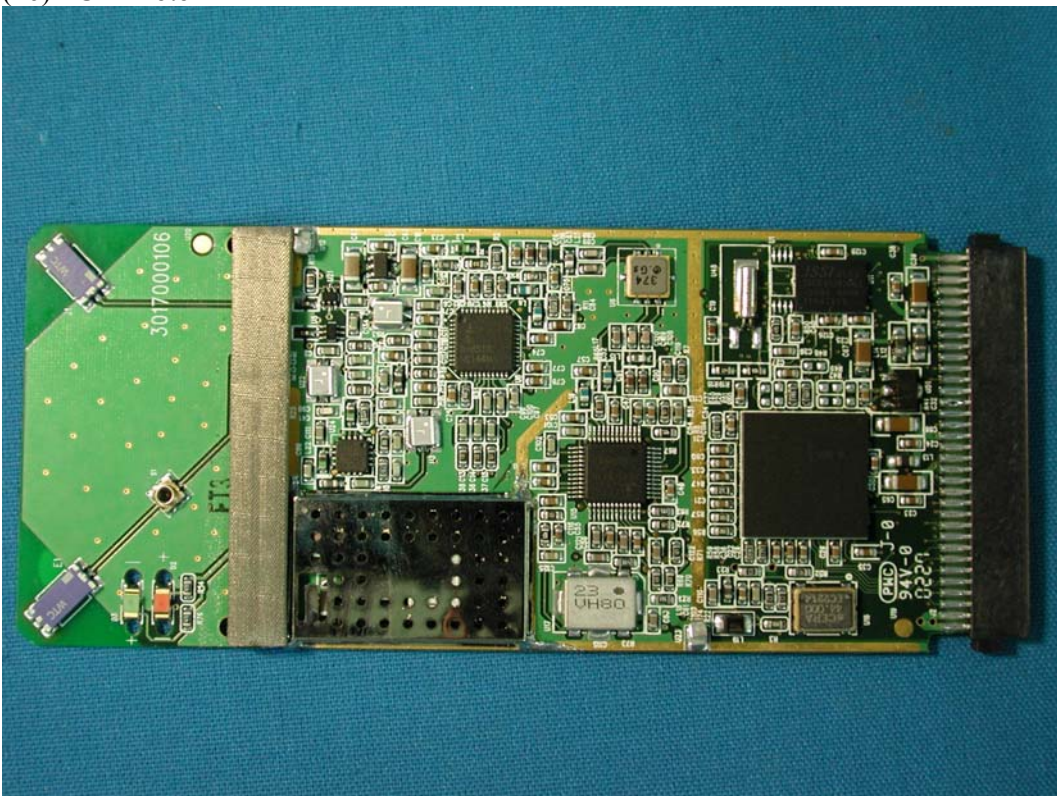




(15) EUT Photo

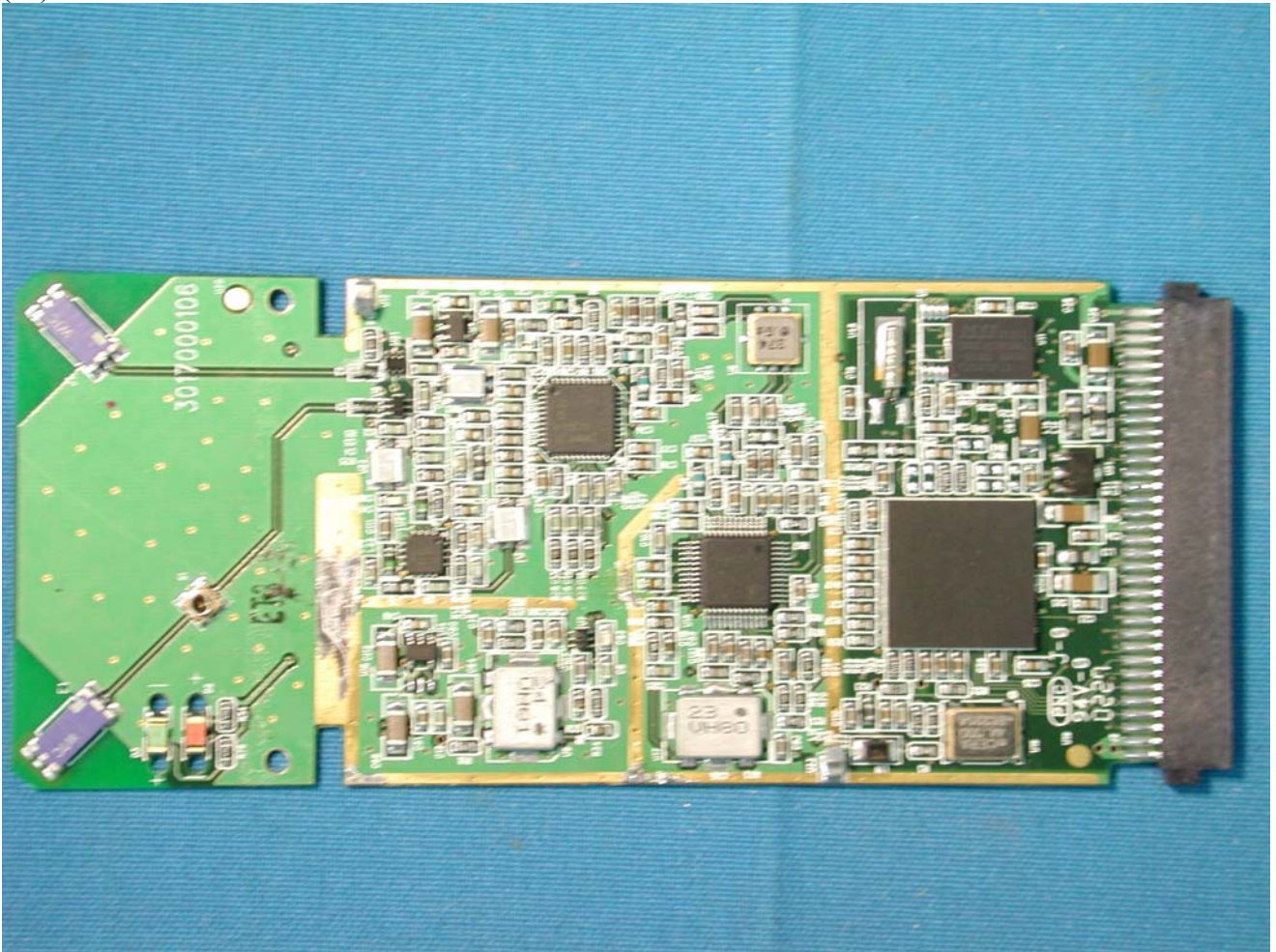


(16) EUT Photo





(17) EUT Photo



(18) EUT Photo

