

Figure 5
Internal View (Removed Back Cover)



Figure 6
Internal View (Removed Metal Cover of Main Board & Power Board)



Figure 7
Internal View (Main Board & Power Board)

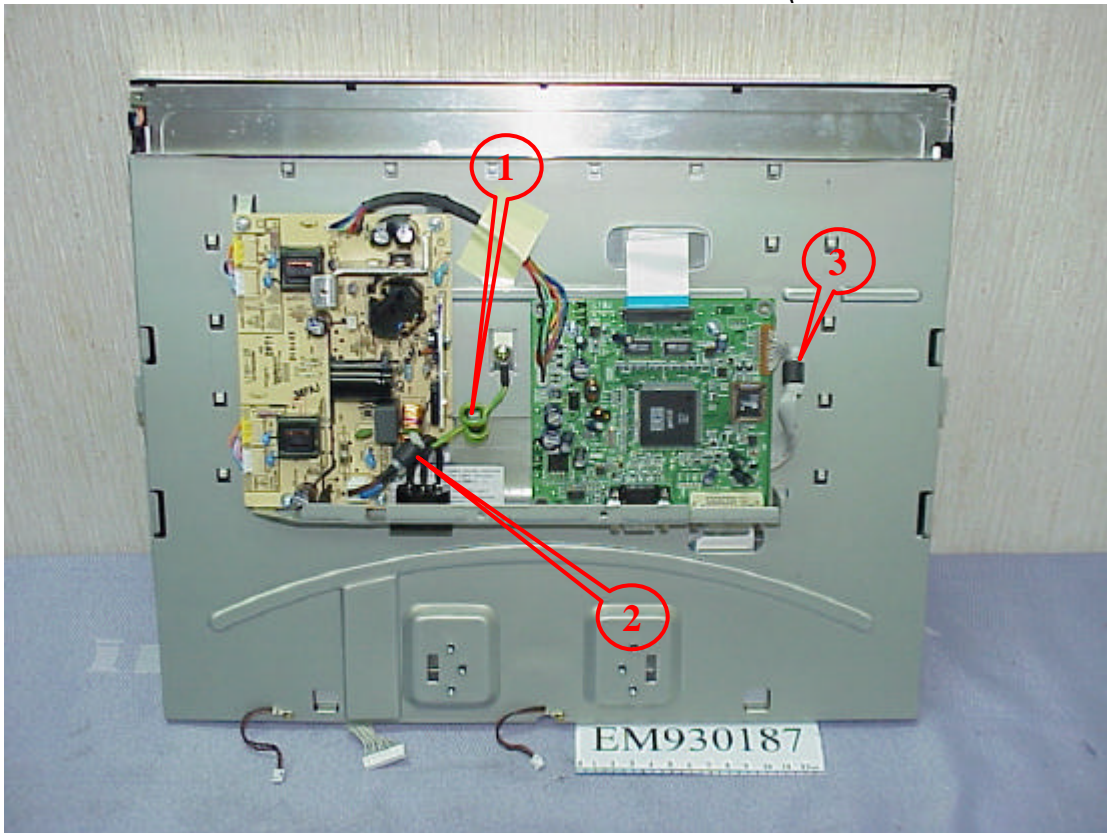


Figure 8
Internal View (Main Board/Component Side)



Figure 9
Internal View (Main Board/Foil Side)

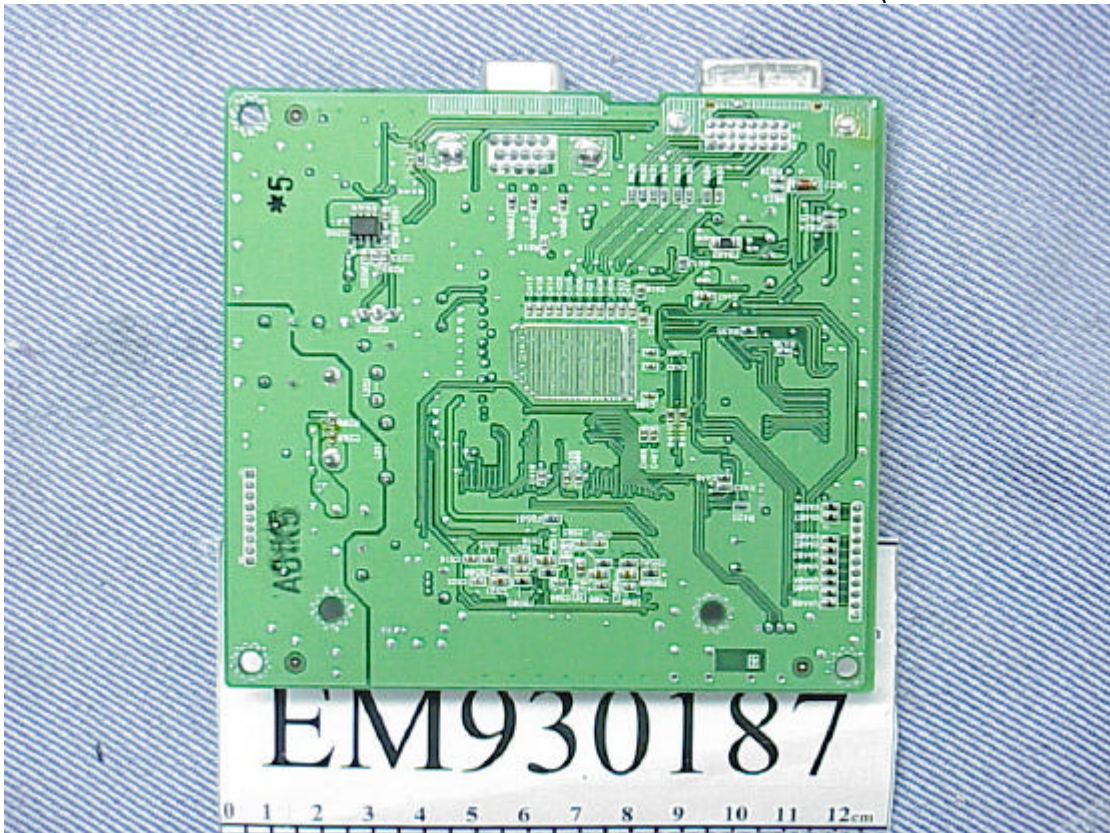


Figure 10
Internal View (Power Board/Component Side)



Figure 11
Internal View (Power Board/Foil Side)

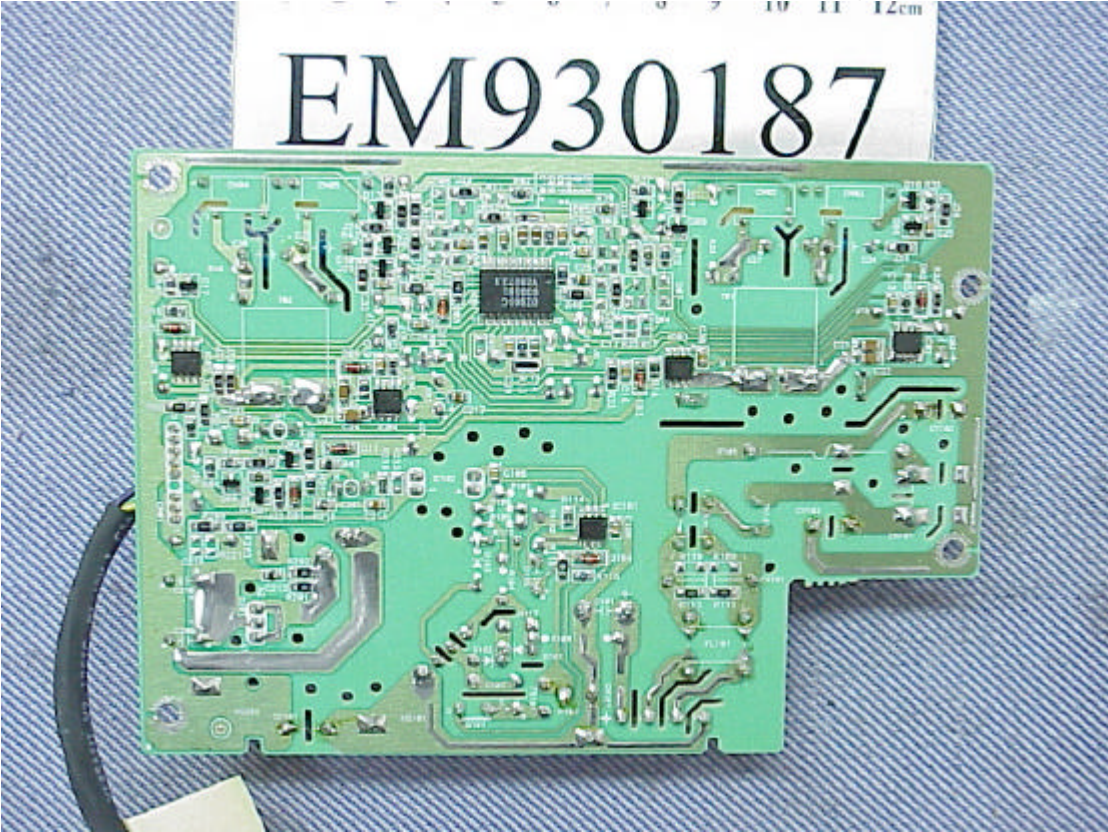


Figure 12
Internal View (LCD Panel/Front View)



Figure 13
Internal View (Function Control Board/Foil Side)

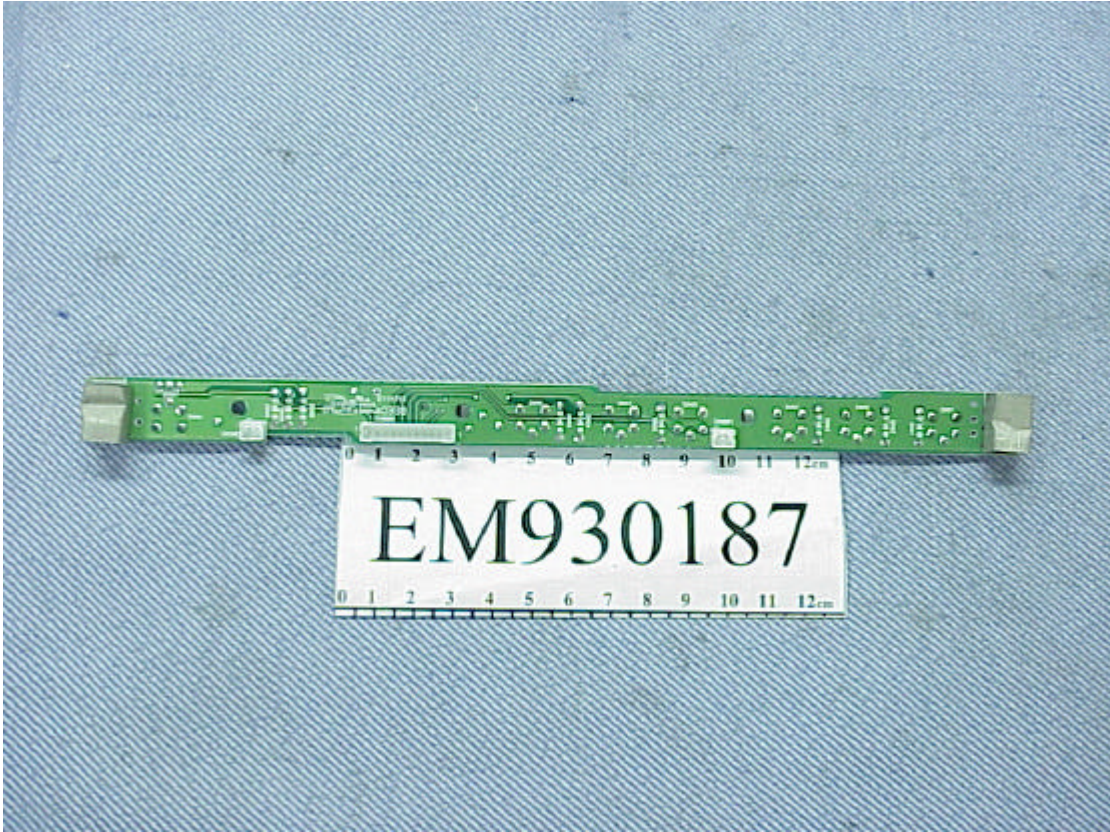


Figure 14
Internal View (Function Control Board/Component Side)

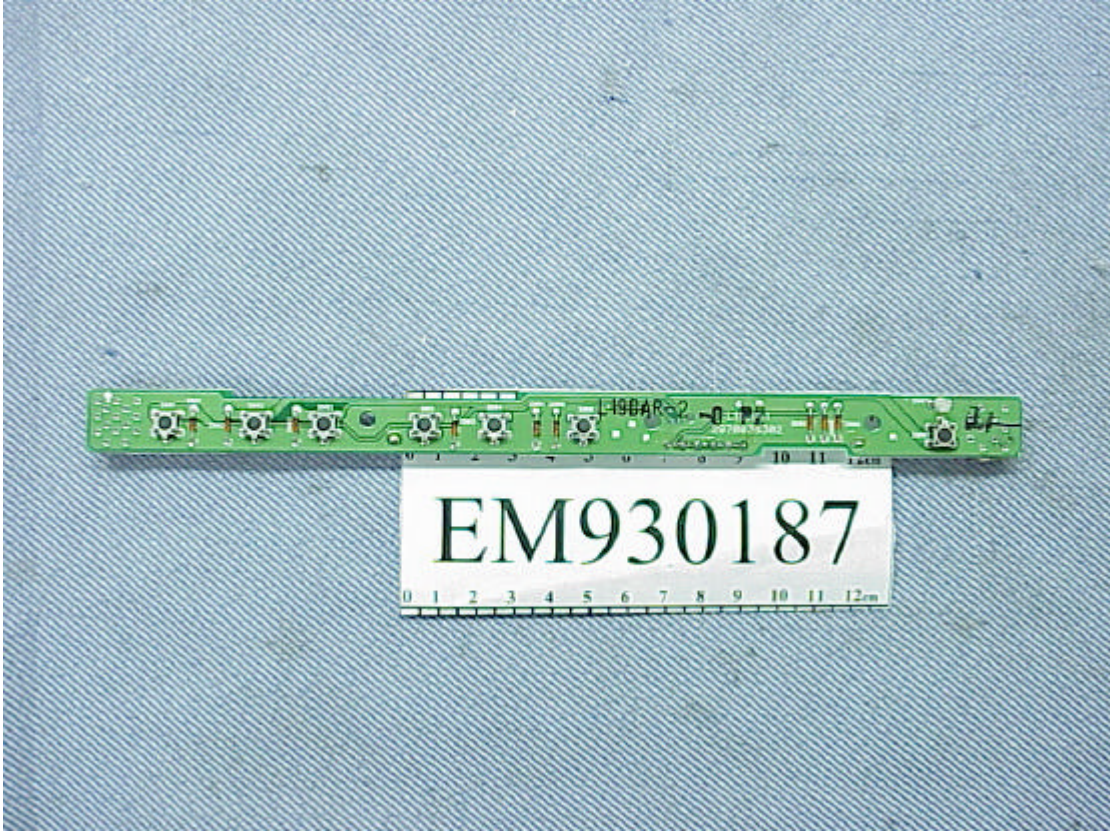


Figure 15
Internal View (Rear View of LCD Panel)



Figure 16
Internal View (Label of LCD Panel)

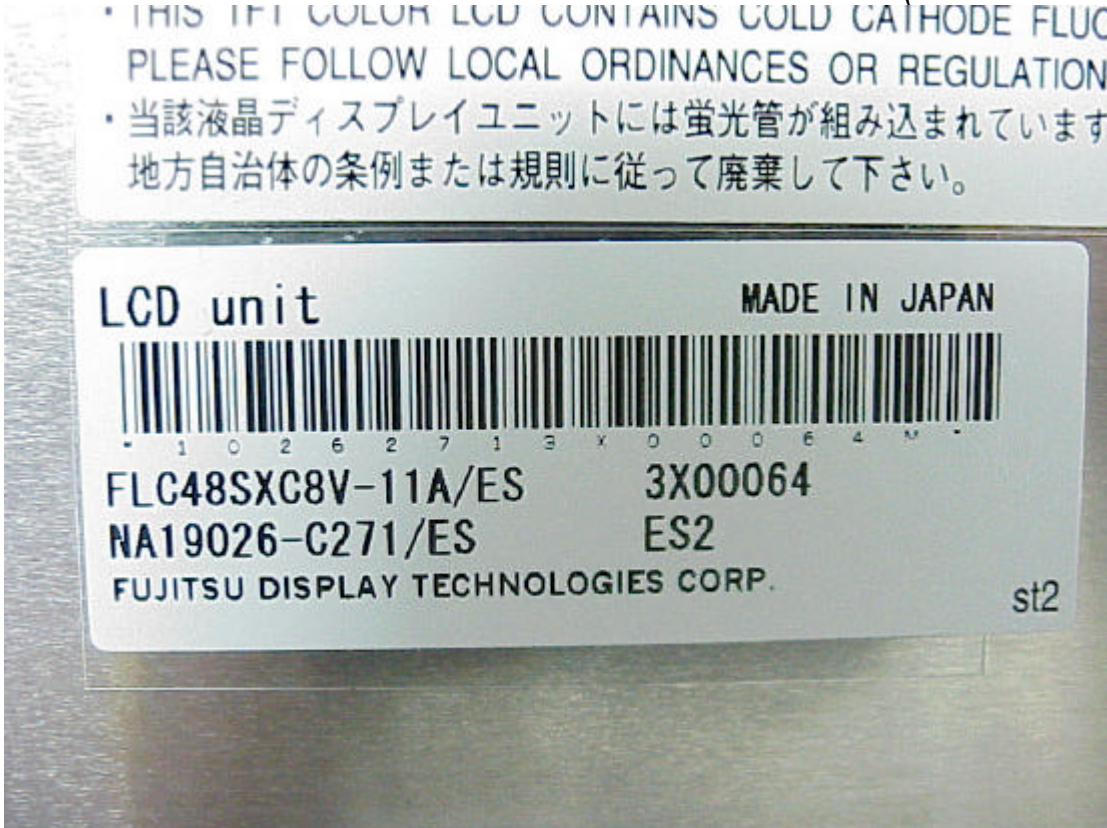


Figure 17
Internal View (PCB of LCD Panel/Component Side)

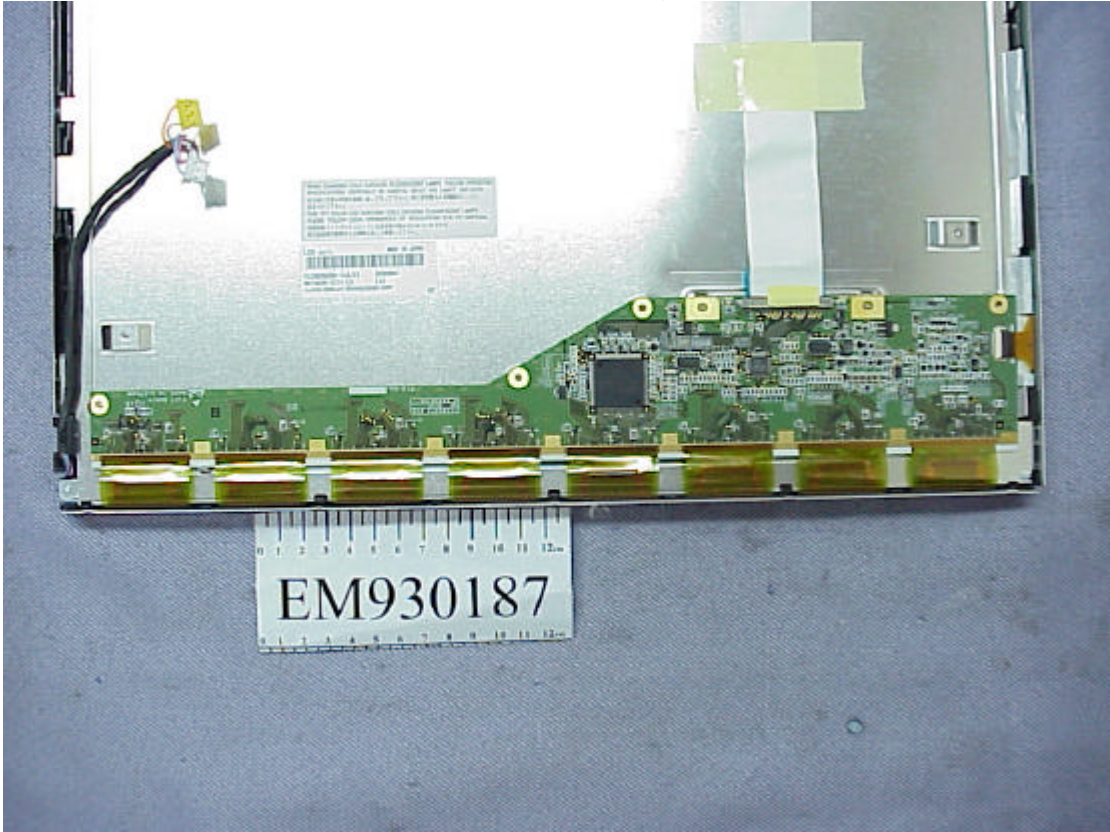


Figure 18
Internal View (PCB of LCD Panel/Foil Side)

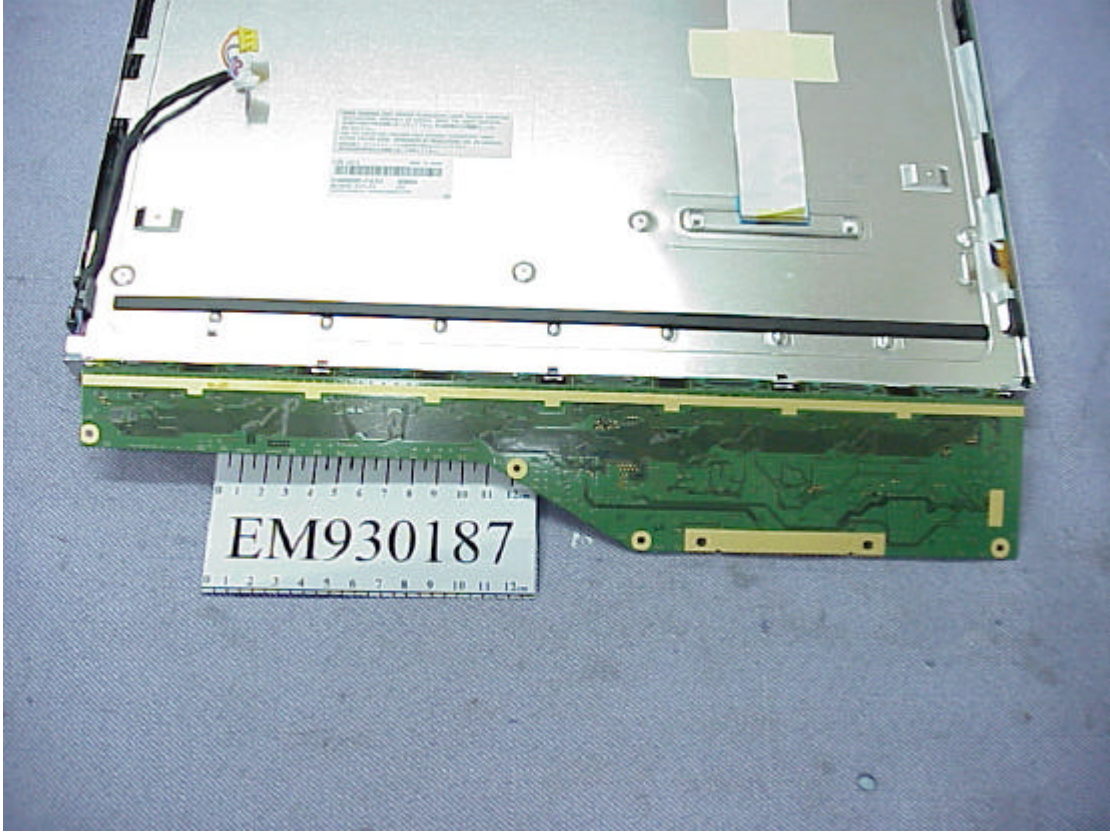


Figure 19
D-Sub Data Cable

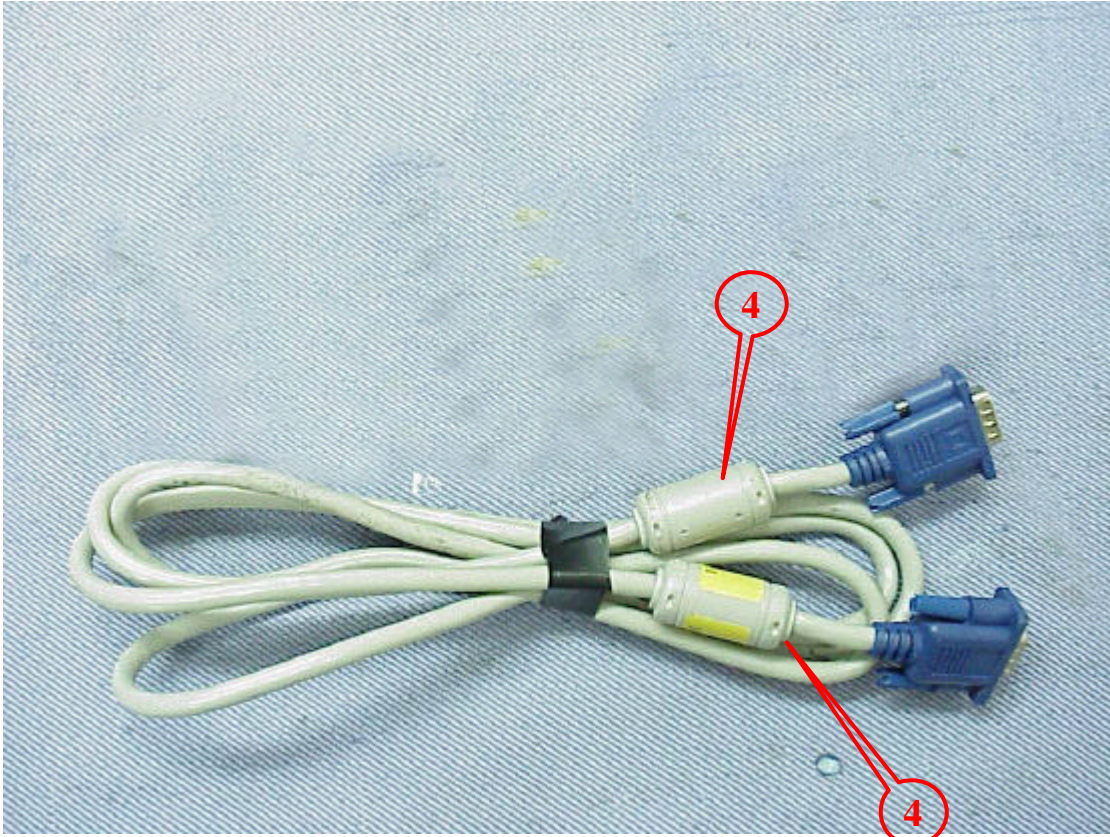


Figure 20
DVI Data Cable

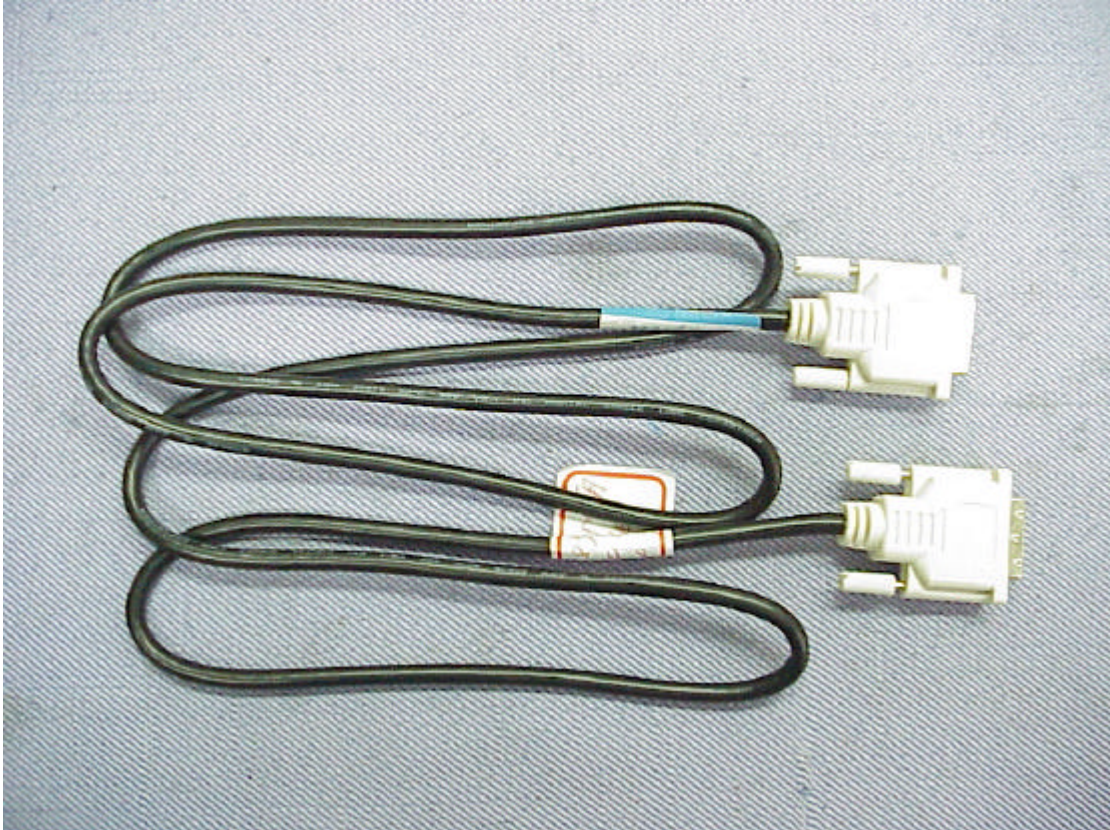


Figure 21
Internal View (EMI Solution)

