

Wi-Fi 2.4G Band

Frequency: 2437 MHz; Duty Cycle: 1:1; Room Ambient Temperature: 25.0°C; Liquid Temperature: 24.0°C

Medium parameters used (interpolated): $f = 2437$ MHz; $\sigma = 2.02$ mho/m; $\epsilon_r = 52.1$; $\rho = 1000$ kg/m³ ;

DASY4 Configuration:

- Area Scan setting - Find Secondary Maximum Within: 2.0 dB and with a peak SAR value greater than 0.0012W/kg
- Electronics: DAE4 Sn877; Calibrated: 3/20/2018
- Probe: EX3DV4 - SN3977; ConvF(7.45, 7.45, 7.45); Calibrated: 9/25/2017
- Sensor-Surface: 2mm (Mechanical Surface Detection)
- Phantom: Flat Phantom ELI4.0; Type: QDOVA001BA; Serial: SN: 1052

Front/Main+Aux Ant/802.11n HT40/Ch6/Area Scan (7x8x1): Measurement grid: dx=12mm, dy=12mm

[Info: Interpolated medium parameters used for SAR evaluation.](#)

Maximum value of SAR (measured) = 2.13 mW/g

Front/Main+Aux Ant/802.11n HT40/Ch6/Zoom Scan (7x7x7)/Cube 0: Measurement grid: dx=5mm, dy=5mm, dz=5mm

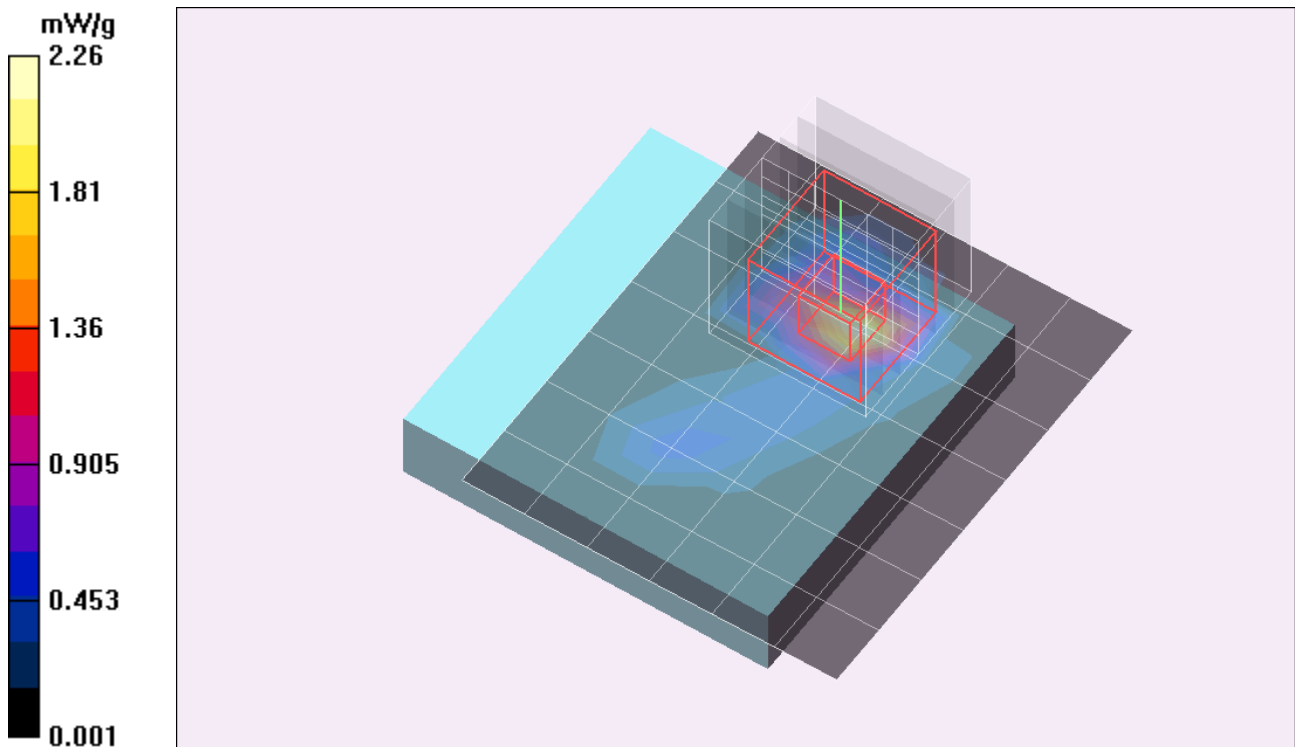
Reference Value = 2.62 V/m; Power Drift = -0.06 dB

Peak SAR (extrapolated) = 3.10 W/kg

SAR(1 g) = 1.36 mW/g; SAR(10 g) = 0.508 mW/g

[Info: Interpolated medium parameters used for SAR evaluation.](#)

Maximum value of SAR (measured) = 2.26 mW/g



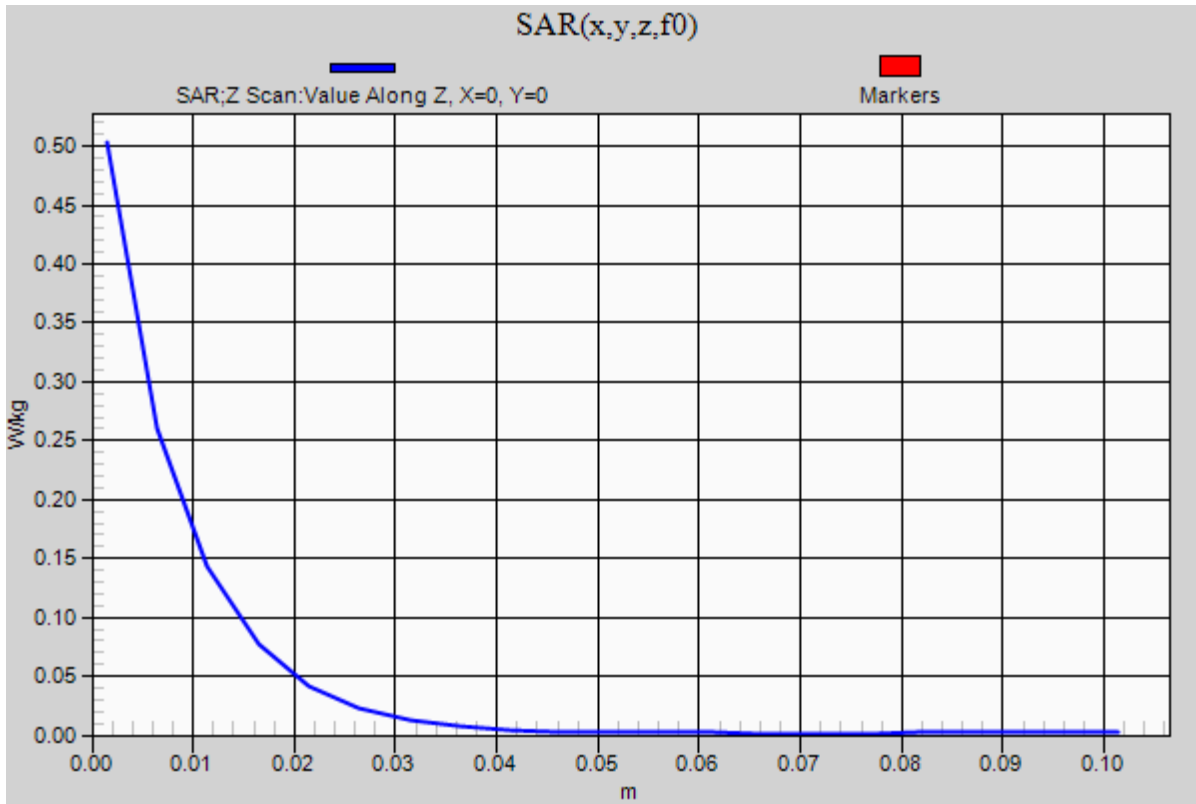
Wi-Fi 2.4GHz Band

Frequency: 2437 MHz; Duty Cycle: 1:1

Front/Main+Aux Ant/802.11n HT40/Ch6/Z Scan (1x1x21): Measurement grid: dx=20mm, dy=20mm, dz=5mm

[Info: Interpolated medium parameters used for SAR evaluation.](#)

Maximum value of SAR (measured) = 0.503 W/kg



Wi-Fi 2.4G Band

Frequency: 2422 MHz; Duty Cycle: 1:1; Room Ambient Temperature: 25.0°C; Liquid Temperature: 24.0°C

Medium parameters used: $f = 2422.6$ MHz; $\sigma = 2$ mho/m; $\epsilon_r = 52.1$; $\rho = 1000$ kg/m³ ;

DASY4 Configuration:

- Area Scan setting - Find Secondary Maximum Within: 2.0 dB and with a peak SAR value greater than 0.0012W/kg
- Electronics: DAE4 Sn877; Calibrated: 3/20/2018
- Probe: EX3DV4 - SN3977; ConvF(7.45, 7.45, 7.45); Calibrated: 9/25/2017
- Sensor-Surface: 2mm (Mechanical Surface Detection)
- Phantom: Flat Phantom ELI4.0; Type: QDOVA001BA; Serial: SN: 1052

Front/Main+Aux Ant/802.11n HT40/Ch3/Area Scan (7x8x1): Measurement grid: dx=12mm,

dy=12mm

Maximum value of SAR (measured) = 1.88 mW/g

Front/Main+Aux Ant/802.11n HT40/Ch3/Zoom Scan (7x7x7)/Cube 0: Measurement grid:

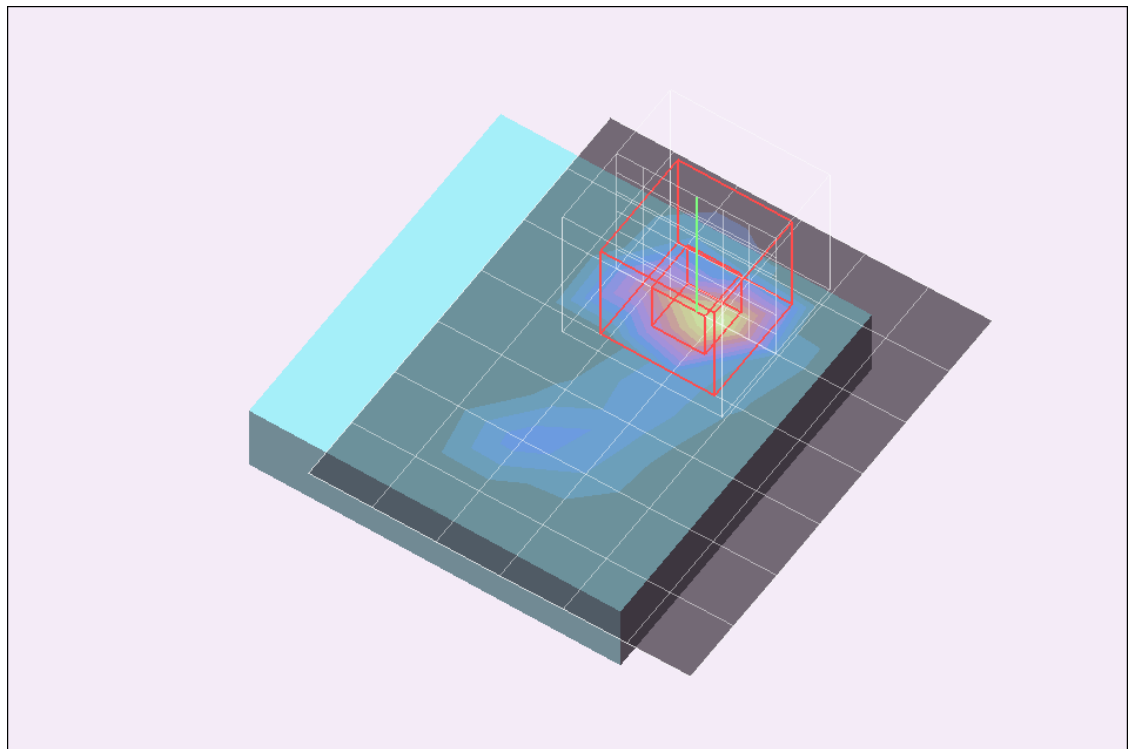
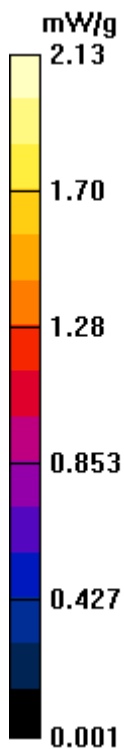
dx=5mm, dy=5mm, dz=5mm

Reference Value = 3.25 V/m; Power Drift = 0.02 dB

Peak SAR (extrapolated) = 2.94 W/kg

SAR(1 g) = 1.21 mW/g; SAR(10 g) = 0.435 mW/g

Maximum value of SAR (measured) = 2.13 mW/g



Wi-Fi 2.4GHz Band

Frequency: 2422 MHz; Duty Cycle: 1:1

Front/Main+Aux Ant/802.11n HT40/Ch3/Z Scan (1x1x21): Measurement grid: dx=20mm, dy=20mm, dz=5mm

Maximum value of SAR (measured) = 2.05 W/kg

