

ADDENDUM FOR THE DLP PROJECTOR

About this Document

This document is intended for network administrators.

Copyright

This publication, including all photographs, illustrations and software, is protected under international copyright laws, with all rights reserved. Neither this document, nor any of the material contained herein, may be reproduced without written consent of the author.

© Copyright July, 2004

Disclaimer

The information in this document is subject to change without notice. The manufacturer makes no representations or warranties with respect to the contents hereof and specifically disclaims any implied warranties of merchantability or fitness for any particular purpose. The manufacturer reserves the right to revise this publication and to make changes from time to time in the content hereof without obligation of the manufacturer to notify any person of such revision or changes.

Trademark Recognition

All product names used in this document are the properties of their respective owners and are acknowledged.

I. OPERATING ENVIRONMENT

Computer Configuration Recommended

Hardware requirements: CPU: Intel Pentium II or higher

Memory: 128M or more

Wireless NIC: based on 802.11b protocol

OS: Windows 2000 (Chinese/English version)

Windows XP (Chinese/English version)

Windows 98 is not supported.

Recommended NIC models

802.11 Protocol	Brand	Model
11b	CISCO	AIR-PCM340
	ORINOCO	ORINOCO GOLD
	INTEL	Centrino
11g	NETGEAR	WG511
	LINKSYS	WPC54G

Projector

Lenovo Wireless Projector TDW680

Lenovo Wireless Projector TDW660

II. FUNCTIONAL OVERVIEW

Wireless Projector

Developed and manufactured by Lenovo independently, the wireless projectors has integrated the **IGRS technology** (automatic search, automatic identification and automatic configuration). Avoid the fussy setup process of the wireless projector you have experienced before. With Lenovo wireless projector, you will get a rapid response plus smooth and natural projection.

Wireless Projector has the Following Ten Unique Functions

1. Simple Wireless Solution

With simple operation, Lenovo Wireless Projector never requires the user to master any particular knowledge on computer and network. The installation can be completed through easy operation. The “Setup-free wireless” feature sets the user free from the fussy operation on IP and network name settings.

2. Smart Automatic Search

With the integrated IGRS protocol, Lenovo Wireless Projector can automatically search and find the wireless projection device.

3. Unique USB Device Play

With the built-in USB port, Lenovo Wireless Projector can play the pictures stored in the flash disk without connecting to a computer. It supports the current popular five picture formats, which are JPG, BMP, GIF, PCX and PNG.

4. Personalized Controller

After connecting to a computer, Lenovo Wireless Projector can be controlled through a controller interface on the computer side to conduct some operations such as shut down and parameter settings.

5. Convenient Remote Mouse

Acting like a mouse, the remote controller of Lenovo Wireless Projector can operate the computer to open a file, or select a menu, and etc. In addition, it can end the wireless projection through its unique “Wireless” button.

6. Unrestricted Switch Over

Lenovo Wireless Projector enable the user with unprecedented flexibility to start the projection anytime and anywhere. The user not only can freely switch between the wire and wireless mode, but also can switch among a number of notebook computers that are using the wireless projection program. This makes it possible that multiple projectors are wirelessly shared.

7. Excellent Wireless Transmission

Besides the wireless convenience, high resolution, high refresh rate, and true color display, Lenovo Wireless Projector can play PPT, WORD and FLASH animation in a smooth way.

8. Quick Projection

TDW680 applications allow user to perform quick projection to the binding projector by using hotkeys (Ctrl+F5), making the projection more convenient.

9. NIC Management

TDW680 allows user to select one of the wireless NICs to project, enjoying the fun of both Internet Surfing and projecting.

10. Compatible with TDW660

TDW680 application is compatible with TDW 660, which can not only realize the TDW 680 project, also support the TDW660 project.

Solution with Lenovo Wireless Projector

Lenovo has incorporated the software mirror and real-time compressing solution in its wireless projector. The data to be displayed is obtained before reaching the display device through the software (can be regarded as a desktop mirror), and then is transferred through the wireless network to the built-in wireless processing board inside the projector after being compressed. In the end, the final decoded data is displayed. It has been proved by experiments that the overall effect of the solution is very satisfactory.

The IGRS protocol is the key technology to enable the IGRS terminals. A number of technologies, such as secure access mechanism, basic protocol, and intelligent application frame, are both the key and difficult points to fulfill the IGRS. The wireless projector developed by Lenovo features PNP and automatic configuration and management of IP address, which avoids the complicated network and hardware settings and the bothering computer reboot process of the ordinary projectors. This has allowed the user to use the Lenovo Wireless Projector in an easier and quicker way.

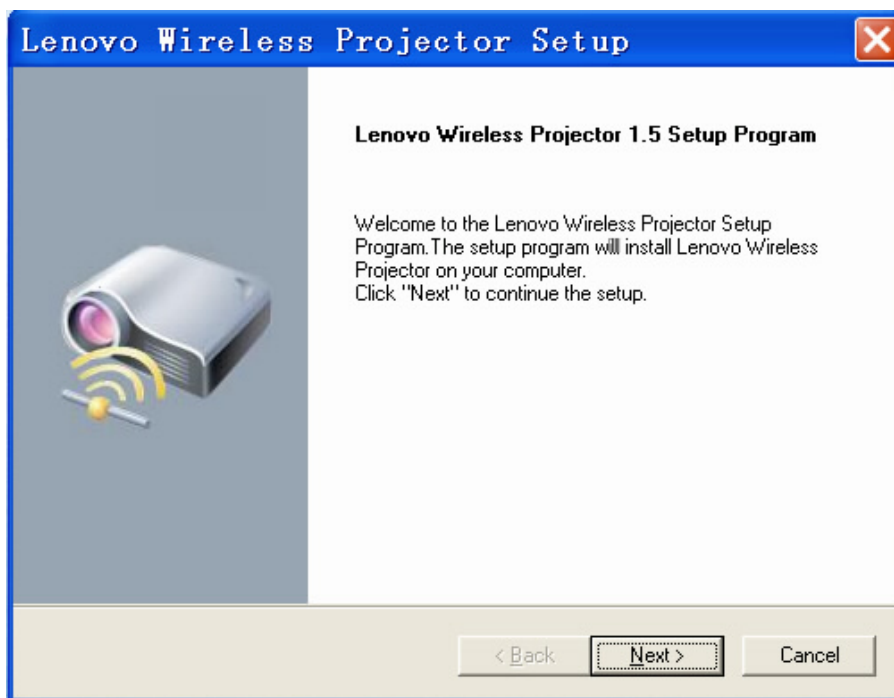
III · LENOVO WIRELESS PROJECTOR SERVICE PROGRAM

Installation and Uninstallation

Description of installation and uninstallation in this section is under Windows XP OS, the screen and text maybe have light difference if using Windows 2000 OS.

Installation

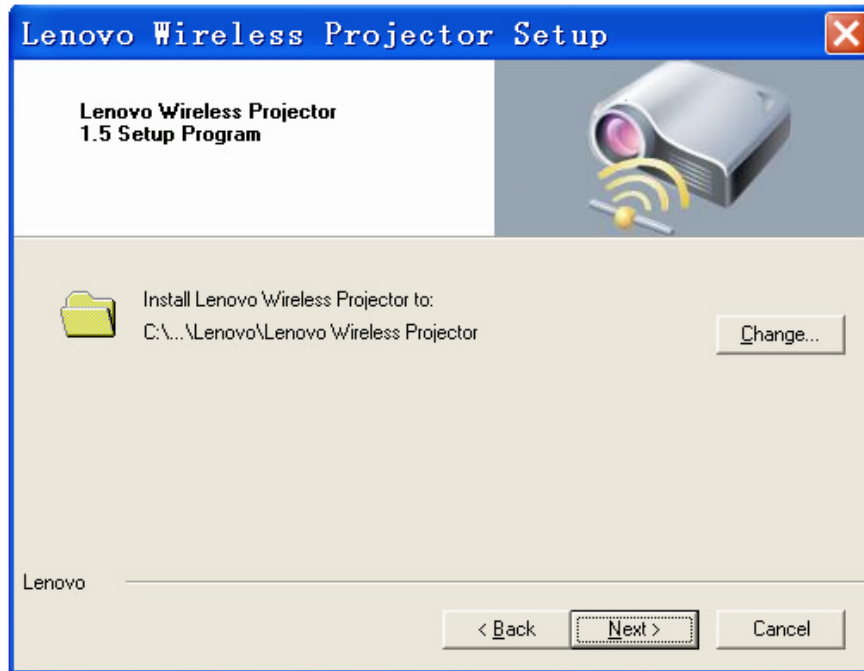
1. Insert the “TDW680 Wireless projector” CD to CD-ROM driver, and CD will run automatically, select “**English**”, then click “**Software Installation**”. The following screen will appear, Click “**Next**” to continue:



Note: please select English version here. There are Chinese and English versions for Lenovo Wireless Projector Setup Program.

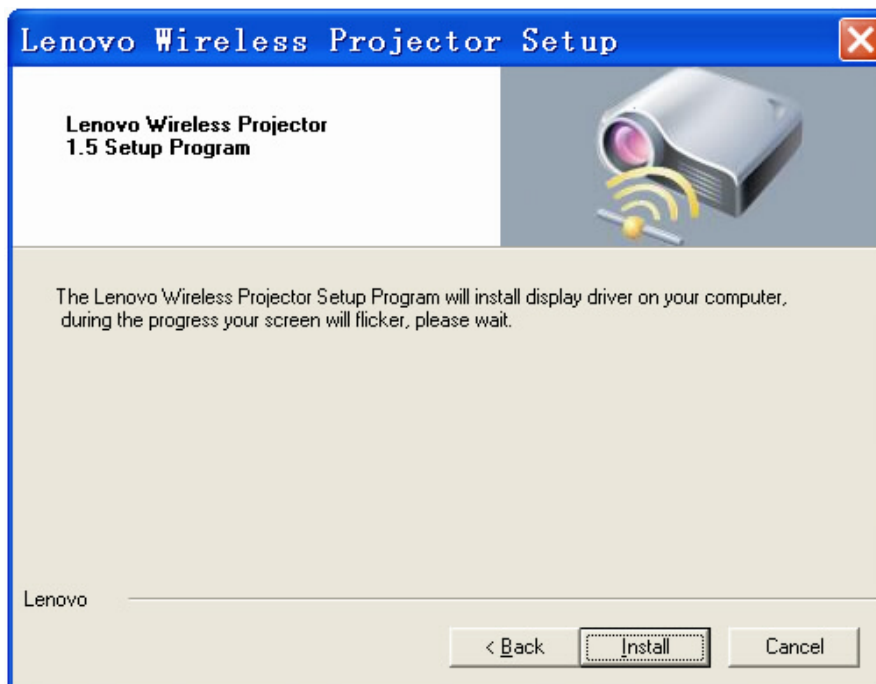
If you want to install the Chinese version, insert the “TDW680 Wireless projector” CD to CD-ROM driver, and CD will run automatically, select “中文(**Chinese**)”, then click “**安裝程序 (Software Installation)**” to install.

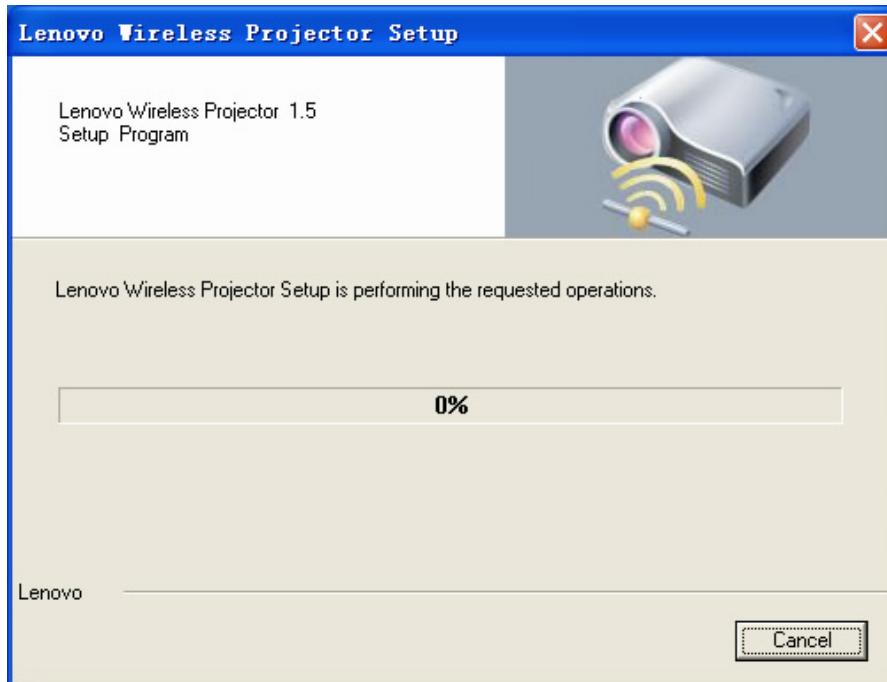
2. The following screen will appear, Click “**Next**” to continue:



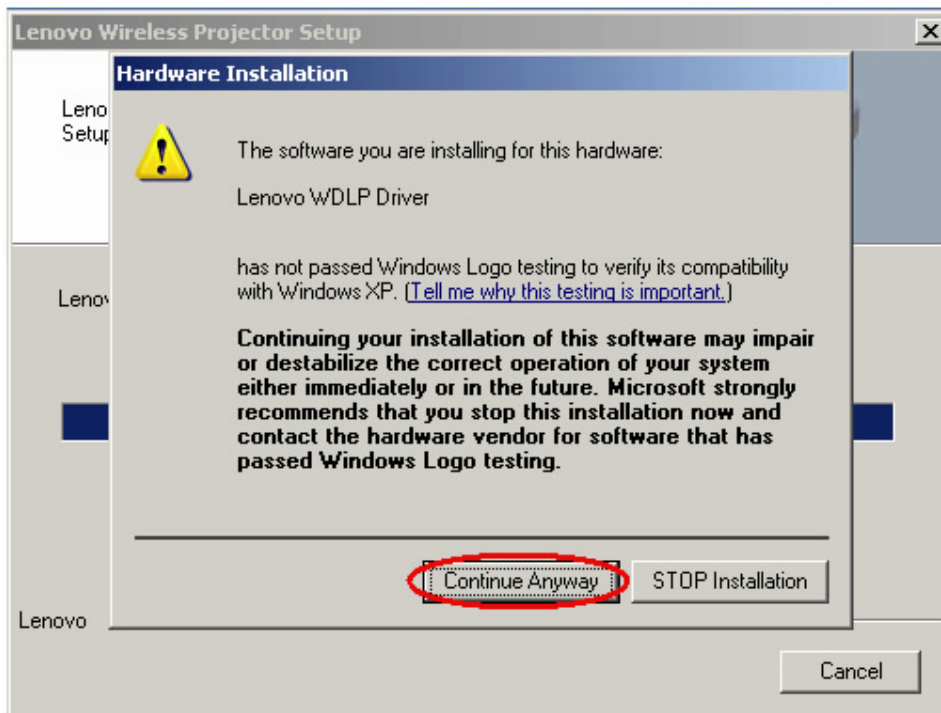
Note: Select “**Change...**” to change the installation path.

3. The following screen will appear, click “**Install**”:

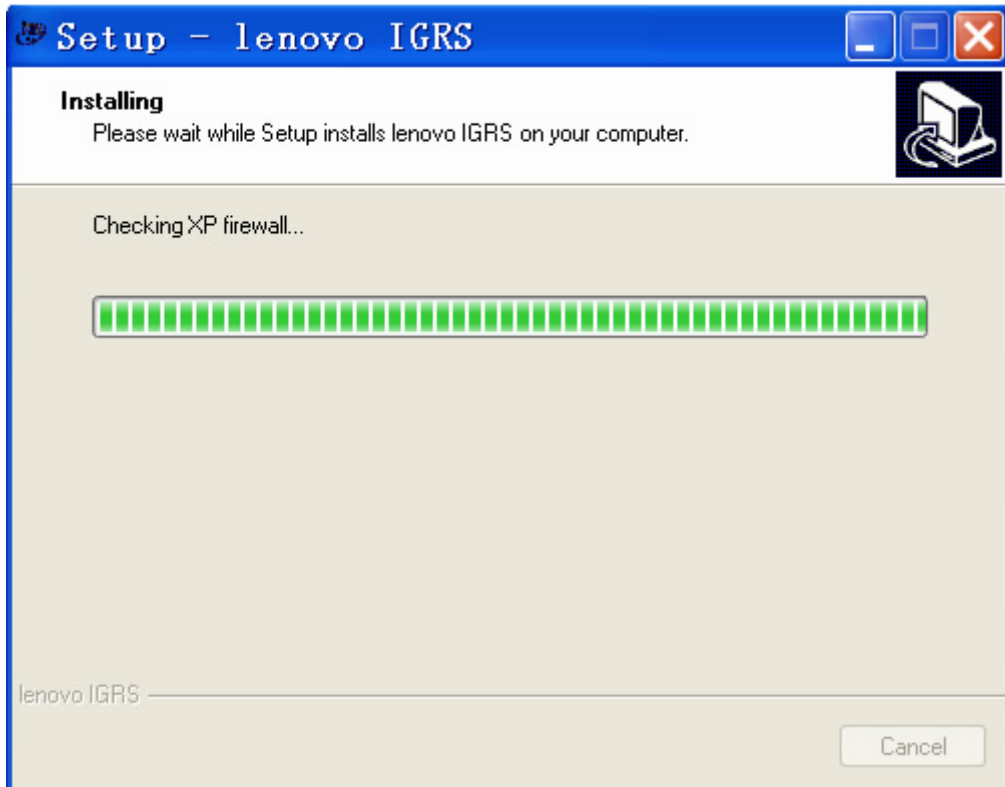




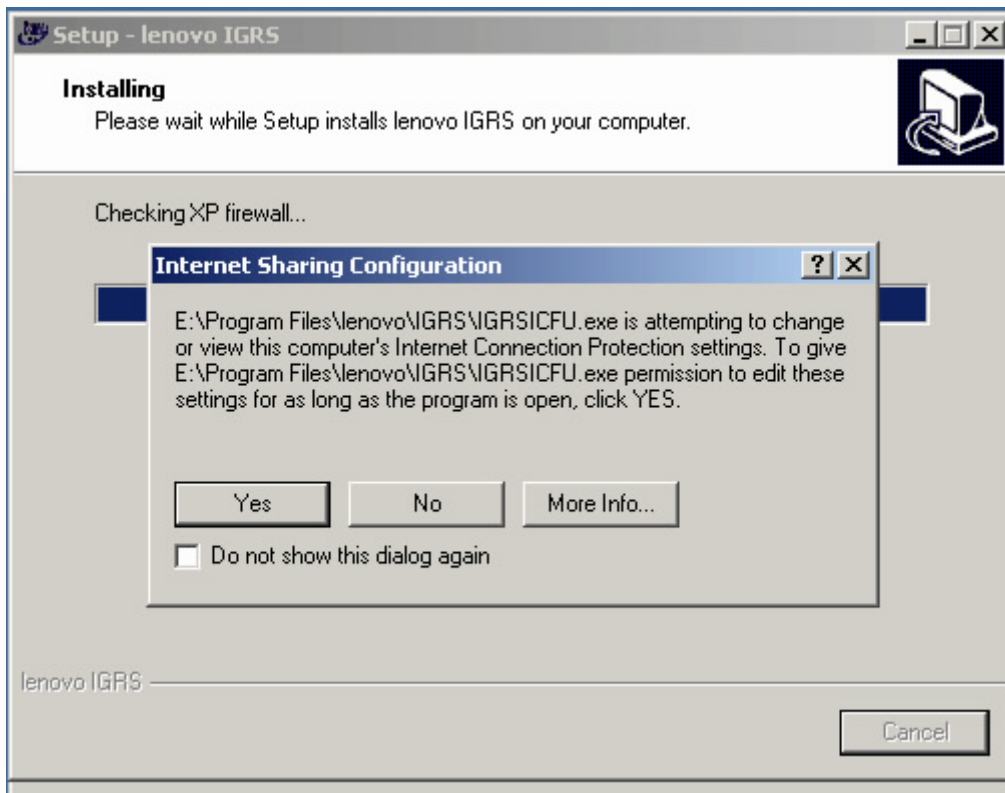
4. You will get a prompt of "Windows Logo testing", click "**Continue Anyway**".



5. Install Lenovo IGRS



6. The following prompt will appear during the installation of Lenovo IGRS, click “**Yes**” to continue.



7. The following screen will appear, Click “**Next**” to continue:



Notes: Select “Add Desktop Shortcut” to run the “Lenovo Wireless Projector” program more conveniently.

8. The following screen will appear, Click “**Finish**” to complete the installation, your computer will be restarted now or later according to your choice.



Note 1: The projector can be operated normally only after restarting the computer.

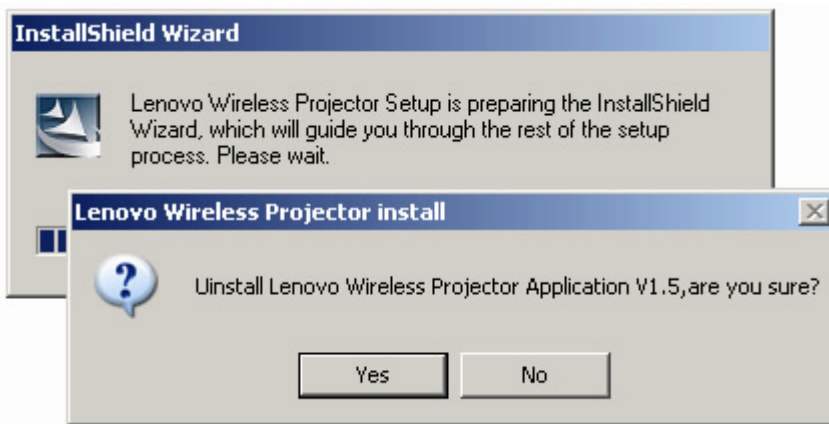
Note 2: IGRS will be installed automatically while you install the program, but it is not be uninstalled when you uninstall the program.

Uninstallation

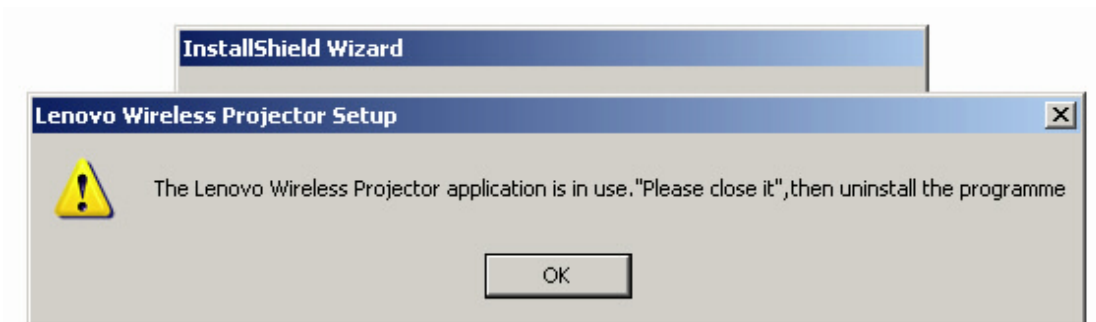
1. When uninstalling, please click “**Start/applications/Lenovo Wireless Projector**” on the bottom left corner of the computer screen, and select “**Uninstall Lenovo Wireless Projector**”. as shown below:



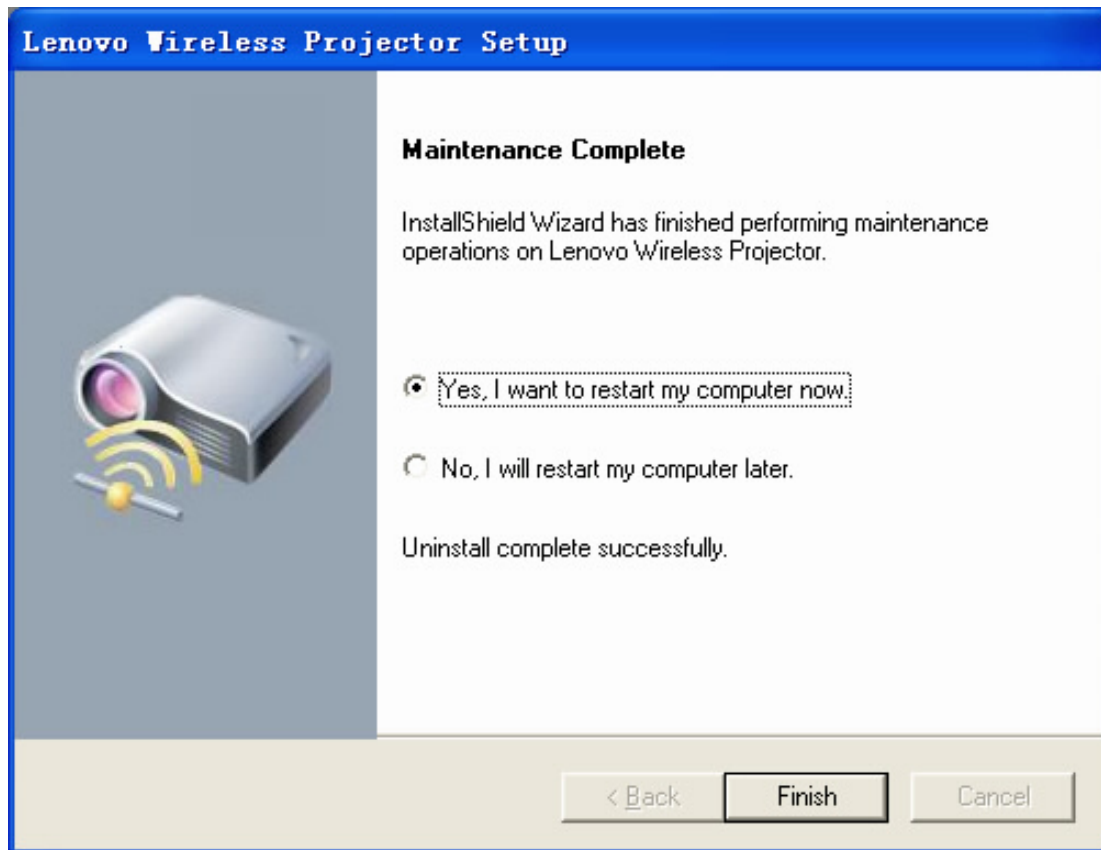
2. The following screen will appear, click “**Yes**” to confirm the uninstallation.



Note: If the Lenovo Wireless Projector application is in use during the uninstallation, then the following prompt will appear:



3. Click “**Finish**” to complete the uninstallation, your computer will be restarted now or later according to your choice.



Note: The projector can be operated normally only after restarting the computer.

Function Description:

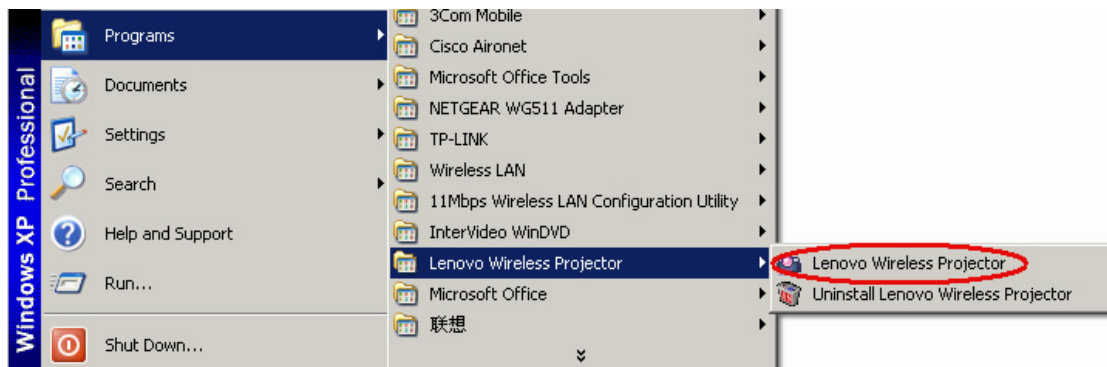
Lenovo Wireless Projection Program mainly includes multi-functions, such as **Starting, Refreshing, Starting projection, Quick projection, Viewing the Attribute of the wireless projector, Project configuration, Switch card, Controller, USB play, End the projection and Quit**, etc..

1. Starting

You should turn on the **Wireless projector before starting the wireless project**. After turning on, the wireless function of projector is on unconnected status, waiting for the wireless connection with computer.

Method 1 of starting “Lenovo Wireless Project” Program:

After installing the “Lenovo Wireless Project” Program and restarting the computer, the shortcut will be created automatically in the program group. Click **Start/All programs/ Lenovo wireless projector**, then click **Lenovo wireless projector** icon to start “Lenovo Wireless Projector” program. As shown below.



Method 2 of starting “Lenovo Wireless Project” Program:

If you select “Add Desktop Shortcut” during the installation, you may double click the shortcut icon after restarting the system to directly run the “Lenovo Wireless Projector” program. As shown below:



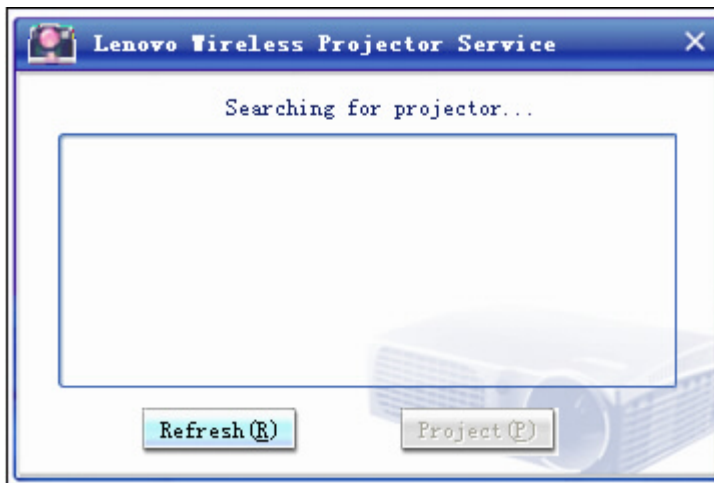
After starting the Wireless Projection, the **Refresh** screen will display and the “Lenovo Wireless Projector” tray icon will appear on the bottom right corner of the screen. If you put the mouse point over the tray icon, you may see the information about the current wireless projection.



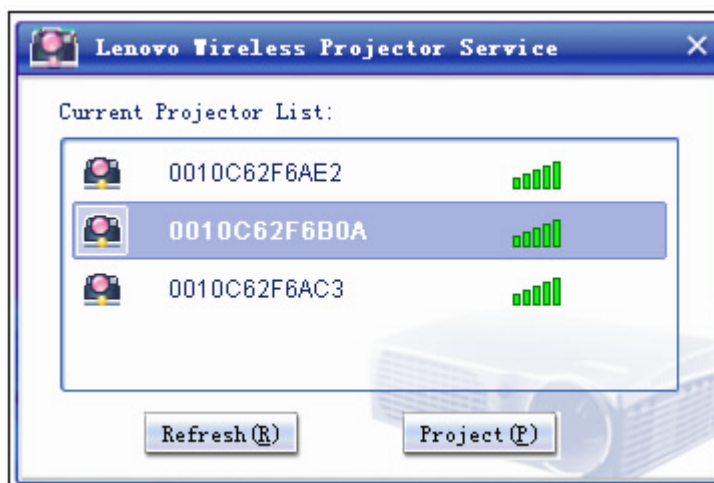
2. Refreshing

After starting the “Lenovo Wireless Projector” program, it will refresh automatically and search current available wireless projector in the wireless network, it will display all ID numbers of wireless projector searched. If there is an available NIC, you may search manually by pressing “**Refresh**” button whenever you want.

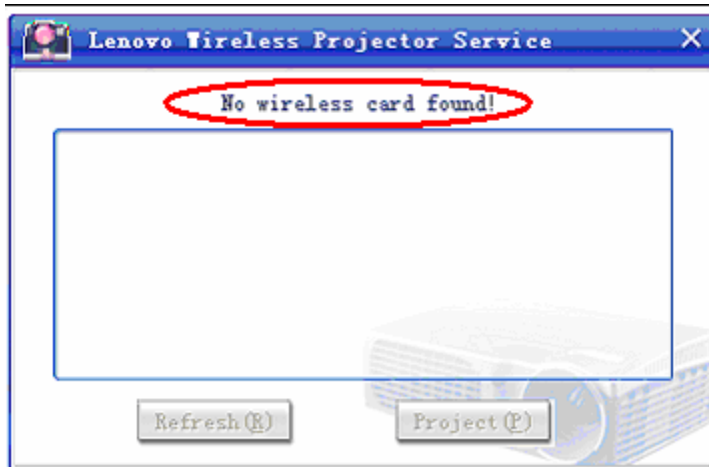
After starting the program, the screen of “Searching for projector” will appear:



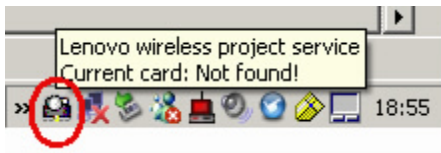
If any projector is searched, the projector list will appear:



Notes: If no wireless card is found, the system will give you a message:



At the same time, the tray icon on the bottom right corner of the PC screen will display as gray, if you put the mouse point over the icon, you may see a message of "Current card: Not found!". Please plug in the wireless NIC, and then try again!

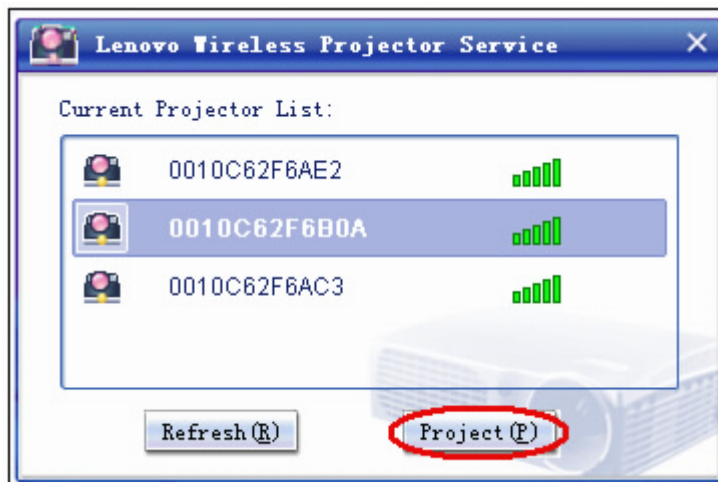


3. Starting Projection

In the wireless projector list searched, click to select one projector, and the selected one will display as blue.

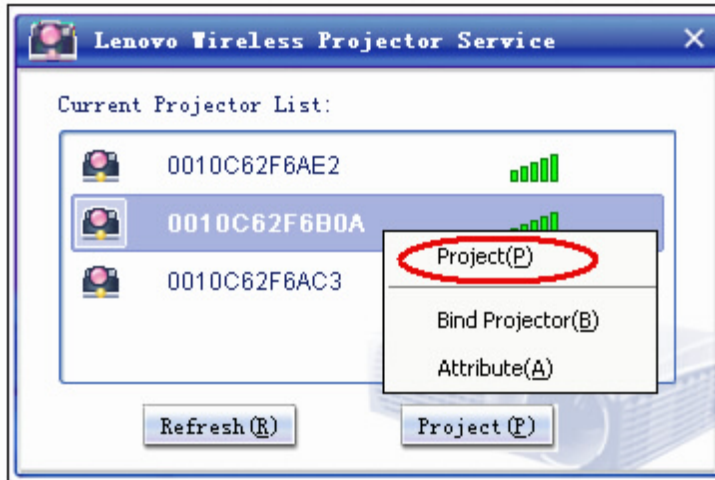
Method 1 of selecting to start the projection:

Press "**Project**" button, and the selected projector will perform the wireless projection, as shown below:



Method 2 of selecting to start the projection:

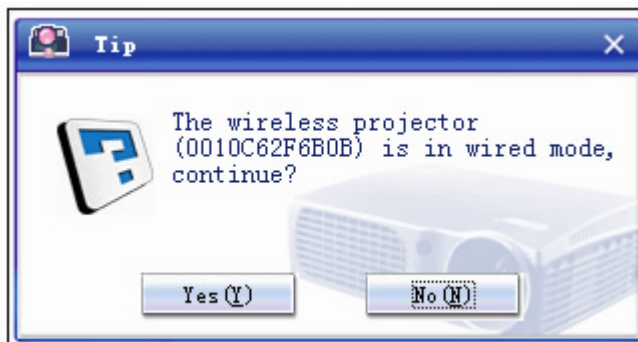
After selecting the projector, right click the blue mark to display “Right key menu”, and then select “**Project**”, and the selected projector will perform the wireless project, as shown below:



While performing the wireless projection, if you put the mouse point over the “Lenovo Wireless Projector” tray icon on the bottom right corner of the screen, you may see relevant information such as Projector ID, NIC used and Signal intensity etc., as shown below:



After selecting “**Project**”, if the projector is in wired mode, the following prompt will appear:



If you select “**Yes**”, wireless projection signal will be transferred to the projector side for waiting, which will not cut off the wired projection signal. If you want to perform the wireless projection, you need to press again the “**Wireless**” button on the remote control.

Select “**No**” to continue the wired projection, and wireless projection signal will not be transferred.

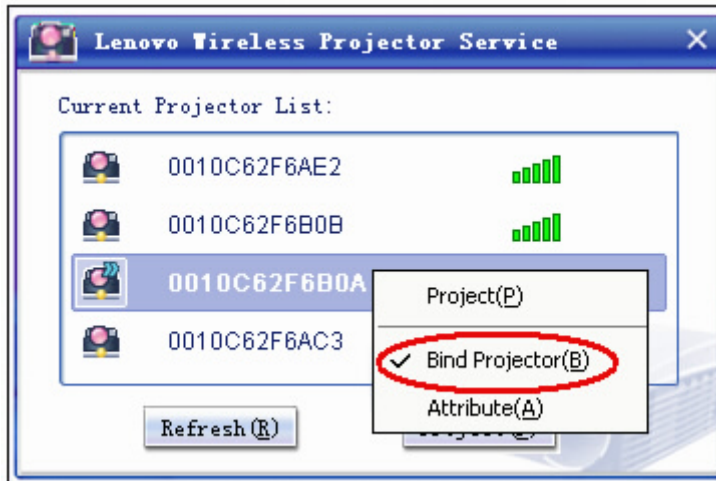
4. Quick Projection

To realize the wireless quick projection, you may bind the wireless projector used frequently.

After starting the wireless project program and one projector has been bound, you may perform the quick projection to the binding projector by using hotkeys (**Ctrl+F5**).

Setting the Bind projector

After starting the wireless project program, you may select one projector in the current projector list, right click the blue mark to display “Right-click menu”, and then select “**Bind Projector**”, the icon of the binding projector will be highlighted by blue double arrow.



Performing the quick projection:

After setting the bind projector, each time you use the wireless projection, you may perform quick projection to the binding projector by using hotkeys (**Ctrl+F5**) after starting the wireless project program.

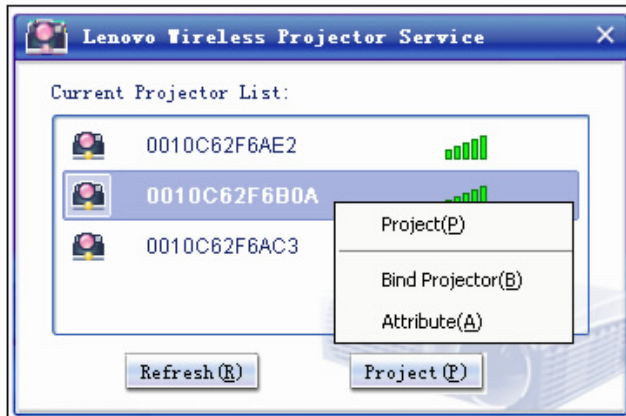
Canceling the Bind projector

After starting the wireless project program, in the current projector list, right click the binding projector to display “Right-click menu”, and click “**Bind Projector**” to cancel the binding. The icon of the un-binding projector will be no longer highlighted by blue double arrow.

5. Attribute of Wireless Projector

After starting the wireless project program, you may select one projector in the current projector list, right click the blue mark to display “Right-click menu”, and then select “**Attribute**”, to view the information of selected projector, for example Prj ID, Model, Version, status, etc., as shown below:

Double click the Prj ID, you may also view the “Attribute” of the projector.



Status of Projector:

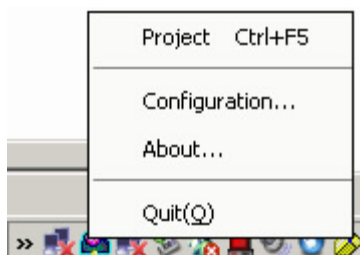
You may view the attribute of projector, there are five main working status of projector: Ready, being used by other users, ongoing USB play, ongoing wired projection and Unknown.

The projector in Ready status is available for use.

Projector's attribute can not be viewed if the projector is performing the wireless projection.

6. "Wireless Projector" tray icon

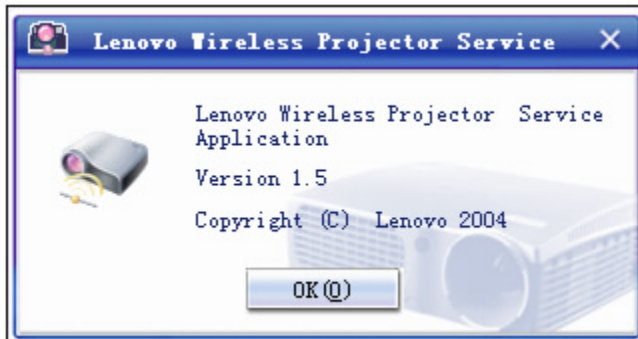
After starting the Wireless Projector program, right click "Wireless Projector" tray icon on the bottom right corner of the screen before performing the wireless projection, the following tray menu will appear:



Project: Select "Project", or press the hotkeys (Ctrl+F5) for the quick projection to the binding projector.

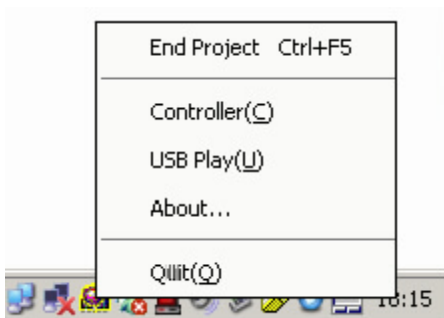
Configuration: select “**Configuration**”, Project configuration and Switch card can be selected by using “Configuration” window.

About: Select “**About**”, you may check the Version information of “Lenovo Wireless Projector Service Application”, as shown below:



Quit: Select “**Quit**” to close “Lenovo Wireless Projector Service Application”.

After starting the Wireless Projection, right click “Wireless Projector” tray icon on the bottom right corner of the screen, the following tray menu will appear:



End Project: Select “**End Project**”, or press the hotkeys (**Ctrl+F5**), to end the current wireless projection.

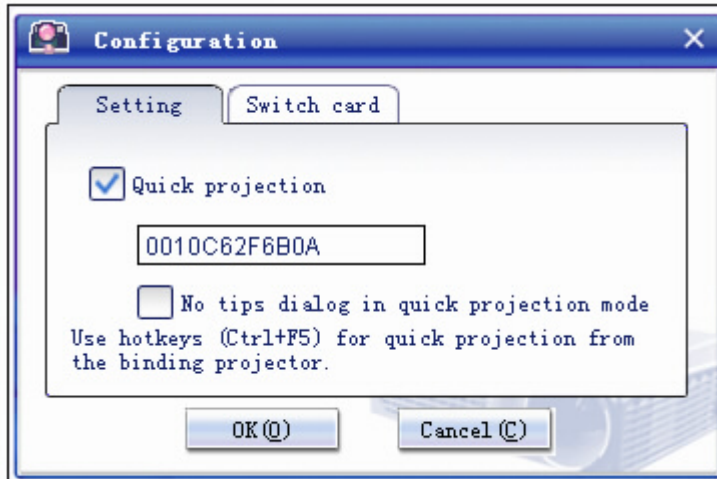
Controller: Select “**Controller**” to open the controller.

USB Play: Select “**USB Play**” to switch the play mode to USB play.

7. Project Configuration

Right click the “Lenovo Wireless Projector” tray icon on the bottom right corner of the screen, select “**Configuration**” to open “Configuration” window.

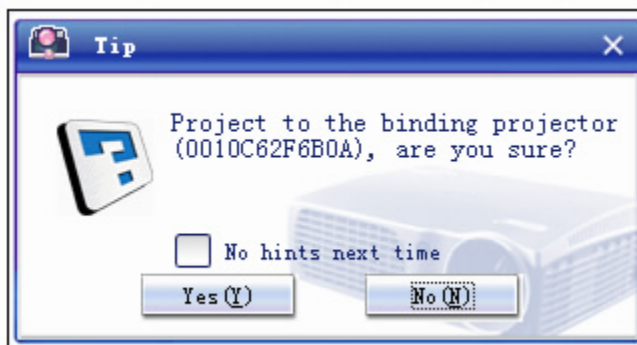
If you have bound the projector, the following “**Setting**” window will appear:



If "Quick projection" is checked, which means to allow user to bind the projector. The default is checked.

ID number of the binding projector will appear in the box below "Quick projection", as shown above.

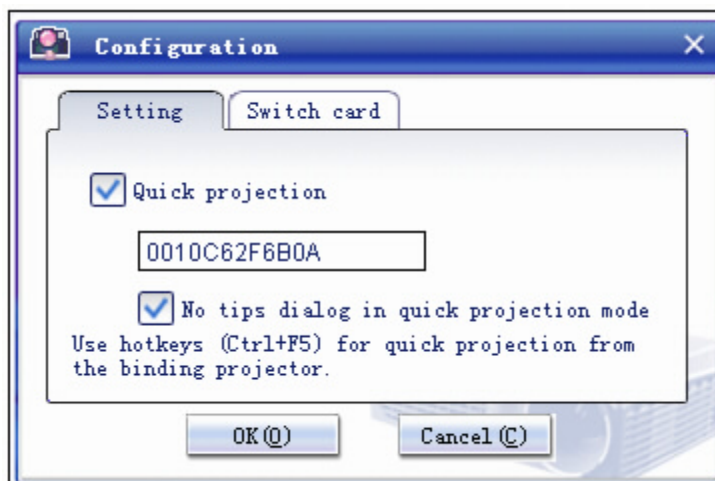
When you use press hotkeys (**Ctrl+F5**) to perform the quick projection, you may see the projecting confirmation dialog, as shown below:



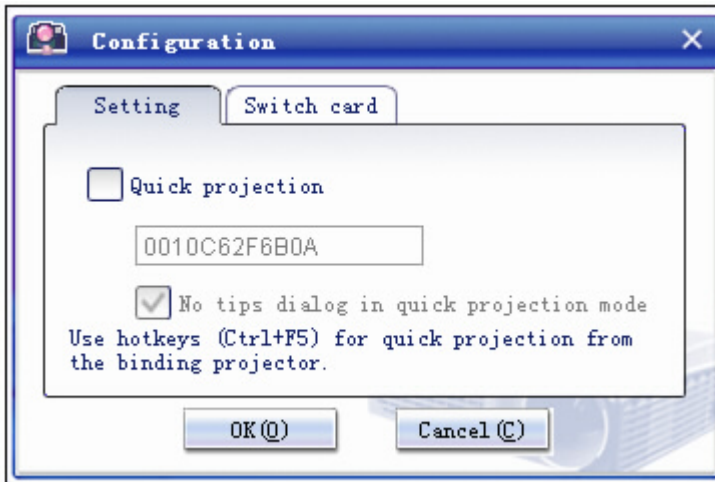
Click "Yes" button to perform the quick projection; or click "No" button to cancel the quick projection.

If you don't want to get the above tips in quick projection mode, you may select "No hints next time".

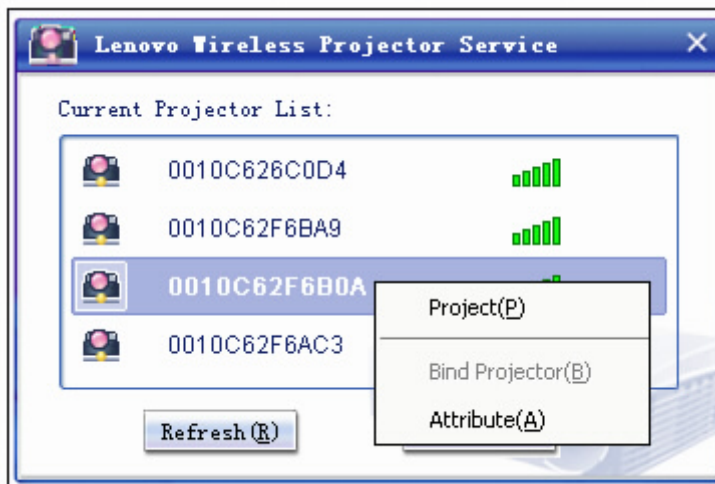
You may also make this setting in the "Setting" Window. You may select "No tips dialog in quick projection mode", as shown below:



If you want to disable the binding projector function or quick projection function, you may unselect the “Quick Projection” checkbox, and then click “OK”. As shown below.



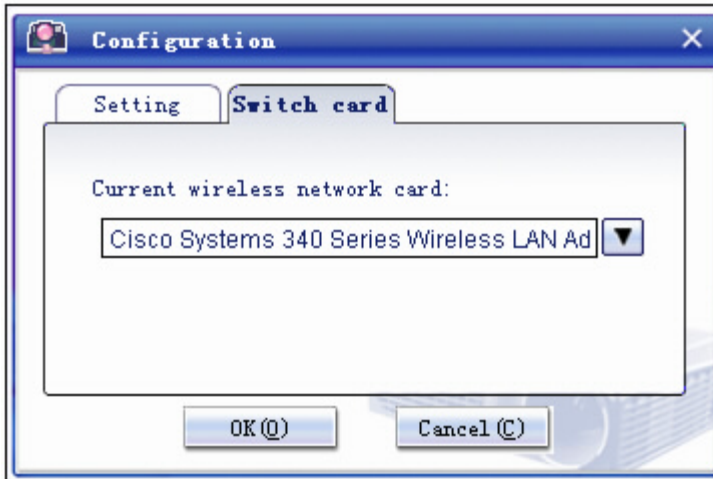
After canceling “Quick projection”, in the projector list, “Bind Projector” in the right-click menu will be gray, and then you can not bind the designated projector.



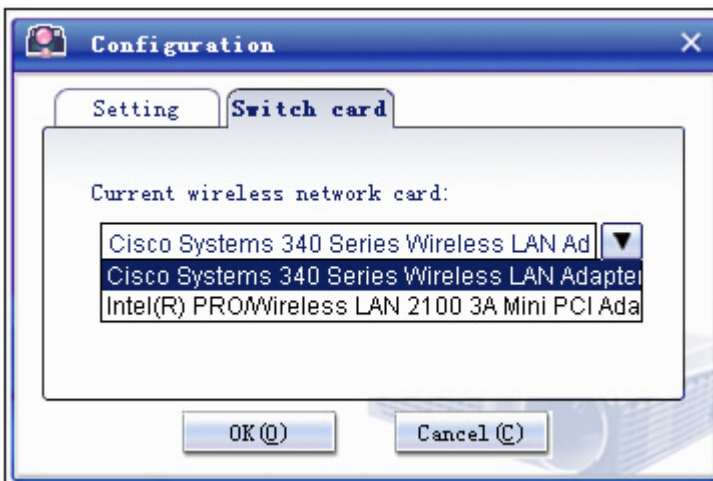
8. Switch Card

Right click the “Lenovo Wireless Projector” tray icon on the bottom right corner of the screen, select “**Configuration**” to open the “Configuration” window. Select “**Switch card**”.

In the “Switch card” window, you may see the current wireless network card in use, as shown below:



If there is more than one wireless network card in your computer, you may perform wireless projection while Internet surfing. TDW 680 allows user to select one of the wireless NICs to project. You may select the NIC to project by clicking the drop-down menu, as shown below:



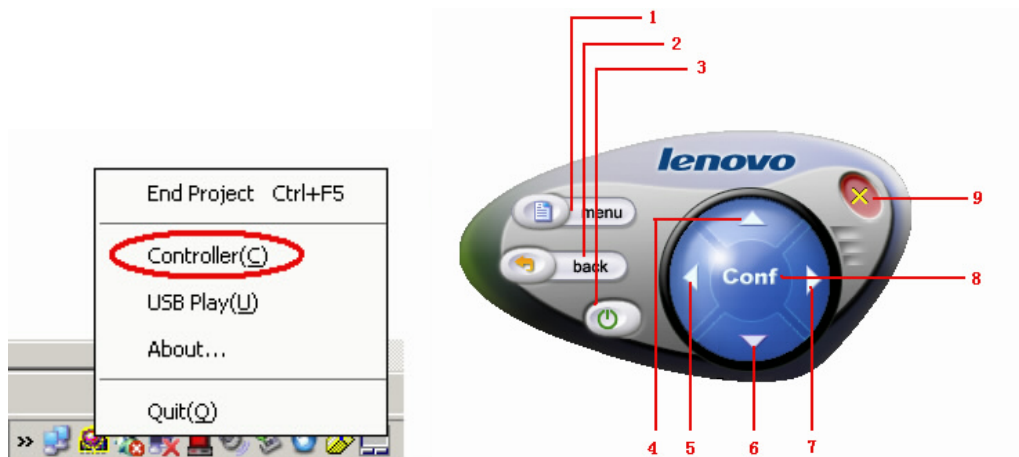
After the configuration, put the mouse point over the "Lenovo Wireless Projector" tray icon, and you may see the below information of the selected NIC.



9. Controller

Controller has common functions of real controller, which can realize the function of projector controlled by computer side, for example, it can open the projector menu and set the projector parameter, and it can also turn off the projector.

The "**Controller**" option can only be shown on the tray menu (on the bottom right corner of computer side) when the projector is on the "Projecting" status, as shown below:



The projector parameter can be set by opening the controller panel at the computer side during projecting.

Right click “Lenovo Wireless Projector” tray icon, select “**Controller**” to open the controller panel, as show above, which functions are the same with the remote control.

Function keys of controller:

- 1- Menu: Open the projector OSD menu and back to the previous menu level.
- 2- Back: Back to previous menu level.
- 3- Close: Turn the projector off.
- 4, 5, 6, 7- Up, down, left and right keys: Select the items to be adjusted and set the parameter selected on the projector OSD menu.
- 8- Conf: Confirm the amended projector parameter.
- 9- Close panel: Close the controller.

10. USB Play

The “**USB Play**” option can only be shown on the “Lenovo Wireless Projector” tray menu (on the bottom right corner of computer side) when the projector is on the “Projecting” status. as shown below:



Projector has build-in USB interface, which can dependently play the pictures stored in flash disk without computer.

Right click the “Lenovo Wireless Projector” icon in the tray, select “**USB play**” to bring up the USB play interface at the projector side, you can play the pictures stored in flash disk of the projector.

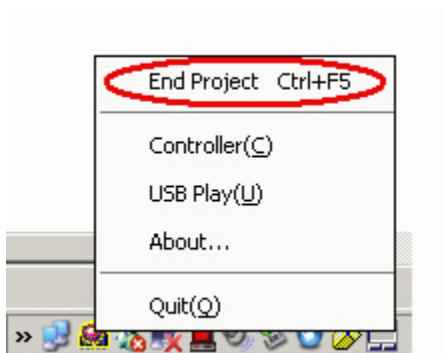
Note: you may also bring up the USB play interface by the projector menu to use the USB play functions. **For details, please refer to “USB Play Description”.**

11. End Project

After finishing, the user can end the current wireless project.

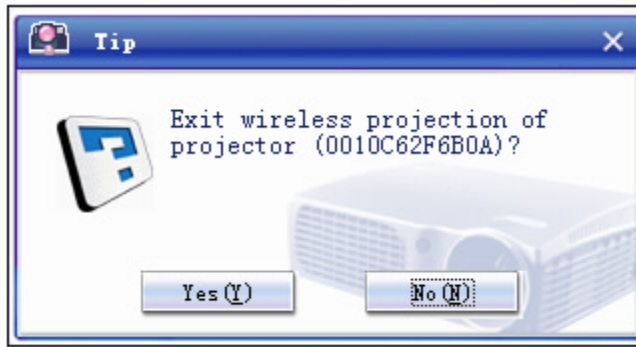
Methods to end project:

1. Right click “Lenovo Wireless Projector” icon in the tray to select “**End project**”.



2. Press **Ctrl+F5** keys to end the current project.

3. Double click the “Lenovo Wireless Projector” icon in the tray to end the project, and the following prompt will appear:



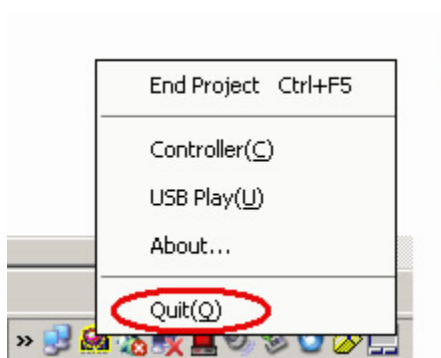
Select **“Yes”** to end the project, and **“No”** to abort this task.

4. Right click “Lenovo Wireless Projector” icon in the tray to select **“End project”**, directly exit “Lenovo Wireless Projector” program.
5. Press **“Wireless”** button on the remote control of projector to forcibly end the projection.

After ending the projection, your original network environment will be restored, and other computers can use this projector to perform the wireless projection.

12. Quit

After completing the projection, right click “Lenovo Wireless Projector” icon in the tray to select **“Quit”**, to exit “Lenovo Wireless Projector” program.



IV. DESCRIPTION OF USB DISPLAY

Main Functions

“USB Play” can read and show static image files stored in USB mobile storage device (including USB flash disk, USB mobile hard disk, and digital camera with USB interface, and etc.), which can auto-scale, auto-play and full screen show the pictures.

“USB Play” can support 5 image file formats (JPG, BMP, GIF, PCX and PNG, except the animate feature of GIF89a) and 1 image index file format (.IDX).

Operation Description

1. Starting USB play and operation method

Starting USB play:

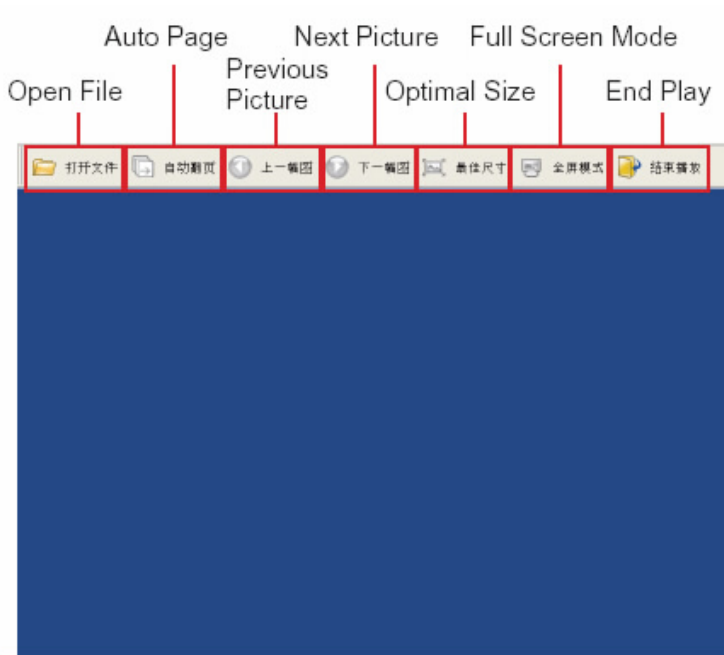
1. When the projector is on “Projecting” status, right click “Lenovo Wireless Projector” icon in the tray (on the right bottom of computer), then select “USB Play” in the tray menu.
2. Press “Menu” button on the control panel of the projector or remote control, then click in turn “Wireless”, “Play USB” and “Play” in the projector menu.

Operation Method:

You may use simulative mouse functions (“left mouse button”, “right mouse button”, “up”, “down”, “left” and “right”) of projector IR remote control, and “Page Up”, “Page Down” to perform “USB Play”.

2. Main Interface

After you start the “USB Play”, the main interface shown blow will appear, the buttons in the toolbar are: “Open file”, “Auto Page/Manual Page”, “Previous Picture”, “Next Picture”, “Optimal Size/Original Size”, “Full Screen Mode” and “End Play”.



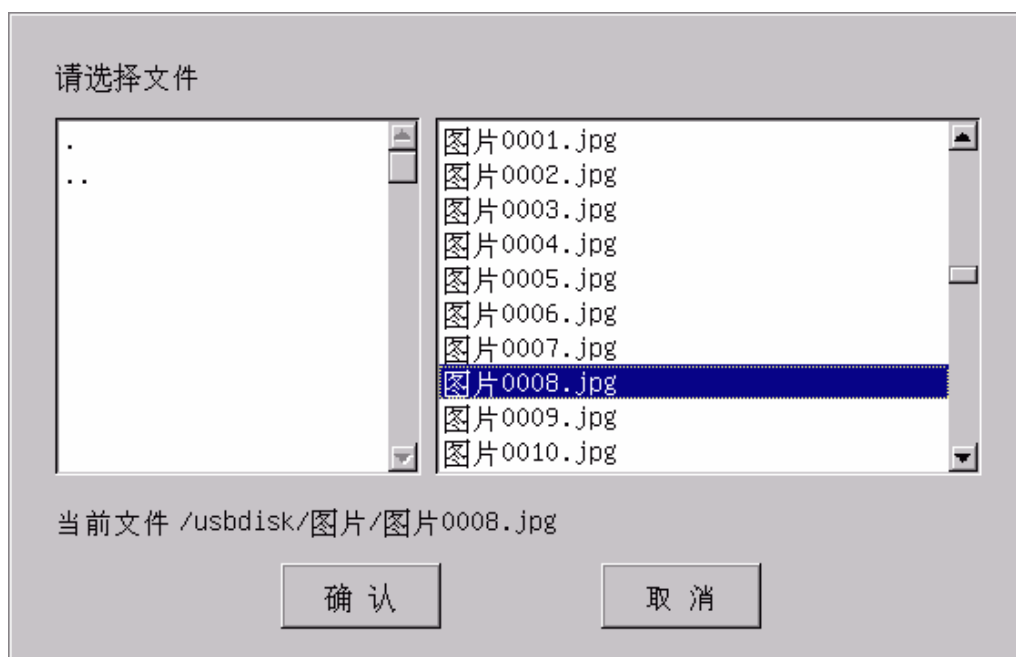
Main Interface

3. Open File

Use the simulative mouse function of remote control to click “Open File” button. The window as shown below will appear, in which lists all the file names and file directories that can be played in USB storage device.

Select the file to be played from the listed file names, then click “Confirm” button to start playing.

Note 1: If the selected file is index file (it is a plain text file with .idx as its extension), the first file listed in the file directory will be played after clicking “Confirm” button; otherwise, the selected file will be played.



“Open File” dialog box

Note 2: If the flash disk is set to FD mode, and there is no response when you click “Open File”, please set the flash disk to HD mode.

4. Auto Page/Manual Page

The “Auto Page/Manual Page” button is a duplex one. After opening file, this file is on Manual Page status, and this button displays as “Auto Page”. After click “Auto Page”, the system will be on auto page status, then the button displays as “Manual Page”. Click “Manual Page” to switch system to Manual Page status.

When the system is on auto page status, next picture will be automatically played every 3 seconds. After the last picture has been played, the system will automatically back to play the first picture.

5. Previous Picture

When you open the file and the current file is not the first picture, use “Previous Picture” to open the previous picture stored in the same directory, equal to the function of Page Up key.

6. Next Picture

When you open the file and the current file is not the last picture, use “Next Picture” to open the next picture stored in the same directory, equal to the function of Page Down key.

When the last picture is played in full screen mode, press Page Down key to automatically switch to the first picture.

7. Optimal Size/Original Size

After opening the file, the shown picture is on the original size status and the button displays as “Optimal Size”. If you click “Optimal Size” button or double click left button of mouse (non full screen mode), the system will switch to optimal size status, which will stretch and compact the picture in scale (do not change aspect ratio), and show the picture in optimal size. Or you may click “Original Size” button or double click left button of mouse (non full screen mode), the system will switch to original size status.

8. Full Screen Mode

After opening the file, you can click “Full Screen Mode” or click right button of mouse to switch the system to full screen mode status. Click right button of mouse to switch the system to non-full screen mode status.

In full screen mode, when the last picture is shown, you may click the left button of mouse to automatically show the first picture.

9. End Play

The function of “End Play” button is to end the playing of USB pictures and restore the projector to “Ready” status.

When USB playing, the working status of projector will be on “USB Play” at the connected computer side, and after ending USB play, the working status of projector will be automatically changed to “Ready” status to wait for the next wireless project. At this time, if you click “Start project” at the computer side, the wireless project can be started again.

- **What's the ID number of the projector?**

Each projector is assigned an ID number as the unique identification mark in the factory, which is the "name" of the projector. This ID number will be shown on the left bottom of the screen after the TDW680 projector is turn on.

- **Why is the ID number of the projector still not in the list after clicking [Refresh] for several times?**

Solution 1: Try to search once more (please open its antenna first if Centrino notebook.

Solution2: Re-insert the NIC or press [Wireless] button of remote control, and try again.

Solution 3: Run [Connection reset] option in the menu of projector, and then try again.

- **What to do when the message of failed wireless project appears?**

Solution 1: Try to project once more.

Solution2: Re-insert the NIC or press [Wireless] button of remote control, and try again.

Solution 3: Run [Connection reset] option in the menu of projector, and then try again.

- **How to do if offline is happened during the wireless project?**

Solution 1: please restart the NIC and try again.

Solution 2: please re-insert the NIC and try again.

Solution 3: Logoff the user at the PC side, then restart the project software and try again.

- **How to freely switch between the wire and wireless mode?**

1. Press the "Source" button in the remote control or control panel of the projector, it will first search the wired signal twice for the prior project; if no wired signal is found, then it will search wireless signal to project at the third time.

2. Press the "Wireless" button in the remote control, if the current status is wired project mode, then it will be switched to wireless project mode; or if the current status is wireless project mode, then it will be ended.

3. Select "Management" and "Select signal source" in the projector menu, then click "Computer" or "Wireless" to switch over.

- **Why can't I get a full-screen PPT presentation under the Wireless Project status?**

You maybe use a pirate copy of OFFICE software, please close this PPT file, and then open the file and play again. Please use the official OFFICE.

- **How to play videos, for example DVD?**

Please select the wired mode to play videos.

- **How to project the wireless network content by using the wireless mode?**

If you use Windows XP OS, please connect to Internet first, and then perform the projection.

- **How to do if the wireless Internet Surfing can be realized before the projection, but not after the projection ends?**

Solution 1: please restart the NIC and try again.

Solution 2: please re-insert the NIC and try again.

- **Can the remote control act as a remote mouse?**

Yes. You can use the remote control to access the computer remotely with some operations, such as select the directory and open a file. You can also skip to the next or previous slide when play a PPT presentation.

- **Why do I get an error message “Display service does not exist” when I start the program?**

- VGA card driver may be disabled, please select “Lenovo WDLP Driver”} in my computer/property/hardware/device manager/VGA card, then right click and select “enable”.
- VGA card driver may be uninstalled, please uninstall and re-install “Lenovo wireless program” to auto-load the IGRS program.

- **What’s the USB play function?**

This function enables you to automatically or manually play the pictures stored in a flash disk at the projector side. Therefore, you can play the PPT presentation even without the presence of a computer. If you use this function, please first save the PPT file format as the PIC format.

- **Why is there no response when I select “USB play” at the computer side sometimes?**

The last reason may be the network quality is not good or the connection is timeout. Please select “USB play” again.

- **Why do I get a notice that no USB device is found?**

The plugged USB device is not supported. Please try with other type of USB device such as a flash disk of Lenovo or Netac.

- **Why aren't the files stored in the flash disk displayed?**

There are no files in this flash disk, or the picture file format stored in this flash disk is not supported. Please convert the pictures into the format that is supported.

- **Why is there no response when I open the file in the USB play mode?**

Some flash disk has both FD and HD modes. Please select the HD mode.

- **What picture formats are supported in the USB play function?**

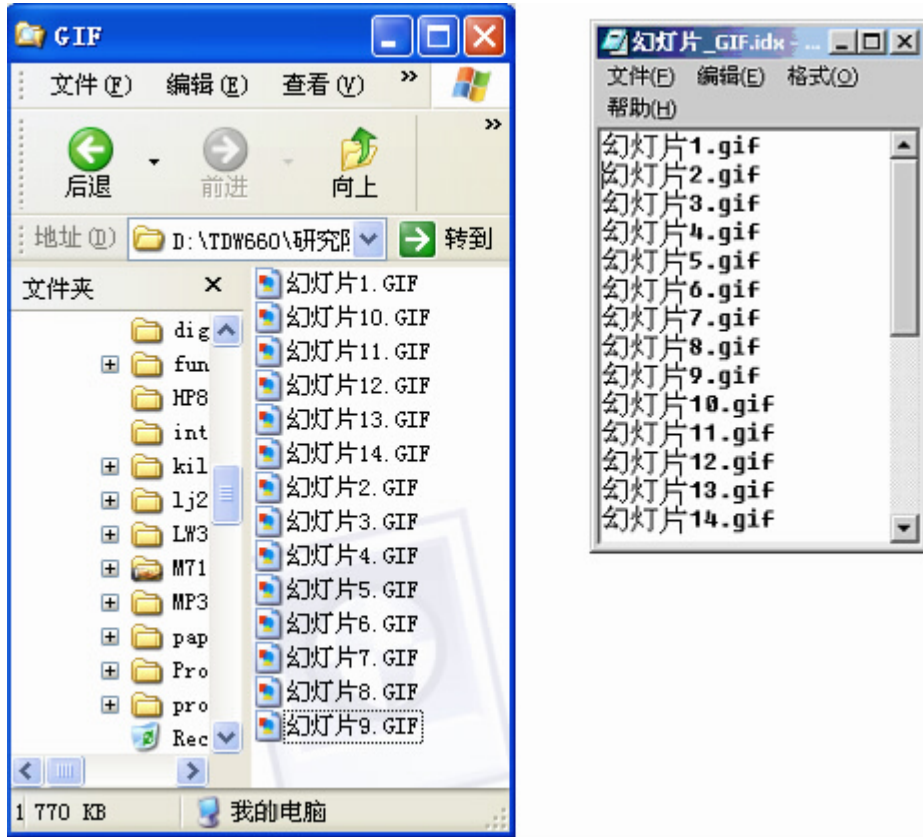
The current five popular picture formats are supported, which are JPG, GIF, PCX, BMP and PNG.

- **How can I play the PPT files with the USB play function?**

Open the PPT file and save it as into the picture format that is supported, such as JPG. It is recommended to use the PowerPoint 2000 version or above.

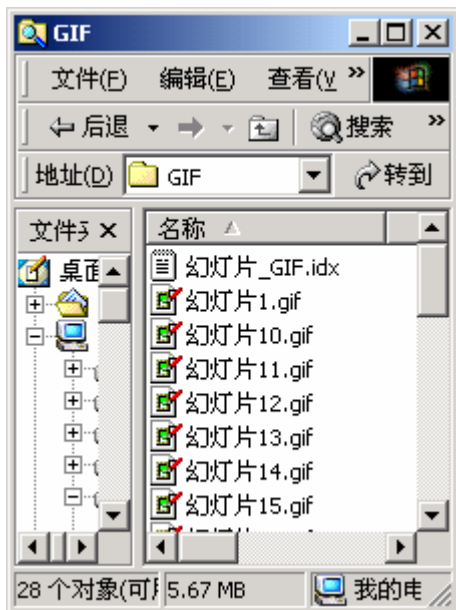
- **How to play the files in a certain sequence in the USB play mode?**

Place all files into a same directory. Then create an index file in the same directory according to the play sequence. Then the program will play these picture files in an order as appointed by the index file. The left screenshot below is the order of the picture files before editing, while the right screenshot below shows the order of the picture files after editing.

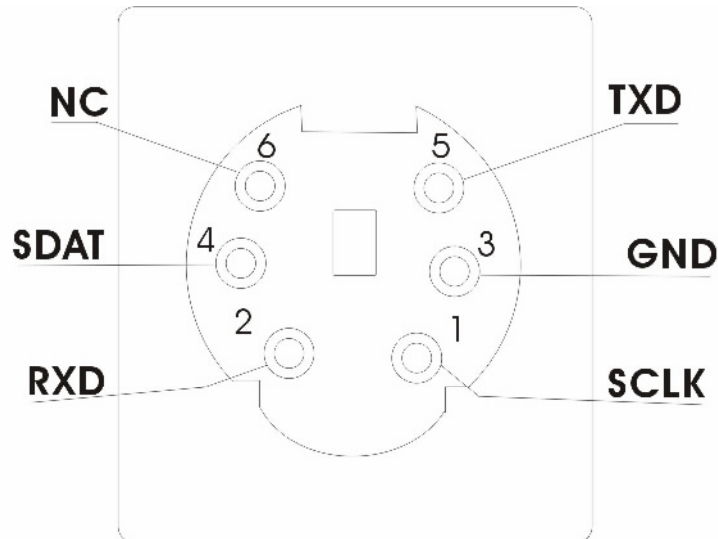


- **How to create an index file?**

The index file is a plain text file with the suffix name as .idx. The content of the index file is a sequence of the files to be played. There should be no space in the file names. The index file and the picture files should be in the same directory. As shown in the screenshot below, the index file “幻灯片_GIF.idx” and the picture files are in the same directory called “GIF”.



RS32 PIN ASSIGNMENT (PS₂ PORT)



1. IC bus clock signal, for software debugging only.
2. Receive data.
3. Ground
4. IC bus data signal, for software debugging only.
5. Transmit data
6. No connect

FCC RF Radiation Exposure Statement

This device complies with Part 15 of the FCC Rules. Operation is subject to the following two conditions:
 (1) this device may not cause harmful interference, and (2) this device must accept any interference received, including interference that may cause undesired operation.

Any changes or modifications not expressly approved by the party responsible for compliance could void the authority to operate equipment.

This equipment must be installed and operated in accordance with provided instructions and the antenna(s) used for this transmitter must be installed to provide a separation distance of at least 20 cm from all persons and must not be co-located or operating in conjunction with any other antenna or transmitter. End-users and installers must be provide with antenna installation instructions and transmitter operating conditions for conditions for

FEDERAL COMMUNICATIONS COMMISSION INTERFERENCE STATEMENT

This equipment has been tested and found to comply with the limits for a Class B digital device, pursuant to Part 15 of the FCC Rules. These limits are designed to provide reasonable protection against harmful interference in a residential installation. This equipment generates, uses and can radiate radio frequency energy and, if not installed and used in accordance with the instructions, may cause harmful interference to radio communications. However, there is no guarantee that interference will not occur in a particular installation. If this equipment does cause harmful interference to radio or television reception, which can be determined by turning the equipment off and on, the user is encouraged to try to correct the interference by one or more of the following measures:

- Reorient or relocate the receiving antenna.
- Increase the separation between the equipment and receiver.
- Connect the equipment into an outlet on a circuit different from that to which the receiver is connected.
- Consult the dealer or an experienced radio/TV technician for help.

CAUTION:

Any changes or modifications not expressly approved by the grantee of this device could void the user's authority to operate the equipment.