

Chapter 3

Configuring the Notebook

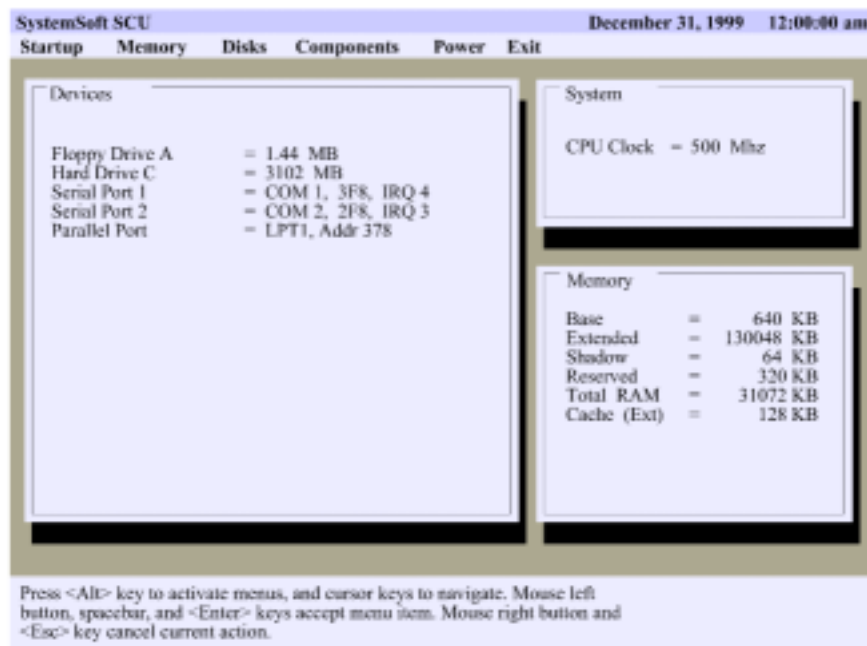
*This chapter provides
an overview of the
System Configuration
Utility program, which
allows you to adjust the
basic notebook settings
to your needs*

System Configuration Utility

The System Configuration Utility lets you use the firmware installed on the notebook to configure your system according to the kind of hardware that you install. Using setup, you can set timing parameters for the memory and processor, define drive specifications, control power management, and so on.

Using the System Configuration Utility

You can only display the setup utility by pressing the [Ctrl] + [Alt] + [s] key combination shortly after the system is turned on. A prompt appears on the screen that reads “<CTRL – ALT – S> to enter System Configuration Utility”. When you see this prompt, press the key combination and the setup utility will display the main page of the System Configuration Utility program.



Navigating

The main screen of the utility program is divided in three major sections. The top section holds a menu bar, the middle section shows three windows, i.e. *Devices*, *System* and *Memory*. These windows provide a quick overview of the current setup settings of your system. Some values are detected automatically;

other values are set to a default value and can be changed through the menu bar at the top of the screen. The third section, at the bottom of the screen, displays hints and help messages relevant to the topic highlighted at the moment.

Press the **[Alt]** key to activate menus. Use the cursor arrow keys to move the highlight through the header list of setup windows. When the option you need is highlighted, **[Enter]** key to select an option. Use the **[Esc]** key to cancel the current action, to close a menu, to go back to the main menu, and/or to exit the System configuration Utility program.

Startup, Memory, Disks, Components, Power, and Exit are the principal options in the main menu bar for system configuration. When you select one of these options, the screen displays a list of items in a drop down menu. Some items you can only enable or disable. Others bring up a separate dialog box once you select them.

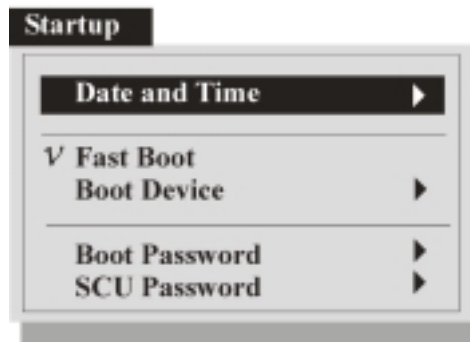
The items that can only be enabled or disabled will either have an **_** or mark in front of them, marking that they are currently disabled or enabled. Items that hide a separate dialog box will have a **▶** symbol behind them.

Within a dialog box you can use the **[Tab]** key to select a control. Use the **[OK]** button or the **[Enter]** key to confirm an entry, and the **[Cancel]** or **[Esc]** key to cancel an entry. To change a value of a field, use the cursor keys, spacebar, and/or numeric keys.

At any given point, you can use the **[Alt]** key in combination with a letter, highlighted red, and use it as a shortcut to jump directly to that function.

Startup

This option displays basic information about your system and hardware.



Date and Time

When you select this option, a dialog box will pop up allowing you to customize the date and time to be used by the system clock.

Fast Boot

You can either enable or disable this option. If enabled you allow the system to boot fast without first testing all functions.

Boot Device

When you select this option, a dialog box will pop up allowing you to customize the order of devices the system tries to boot from consecutively. You can choose from three devices: *Hard disk C*, *CD-ROM Drive*, and *Diskette A*. Set the most important boot device in the *1st Boot Device* box, and continue with the second and third box. The system will only move on to the alternative boot devices after a previous one failed.

Boot Password

When you select this option, a dialog box will pop up allowing you to set or customize a boot password.

Enter old Power-On Password

This field will be available if you return to this dialog box after previously having set a boot password. You will need to confirm your old password again before you can change it to a new one.

Enter new Power-On Password

This field allows you to enter a new password to be used every time the system starts. The password can be up to eight characters long, consisting of both letters and numbers.

Verify new Power-On Password

After you have entered a new password, you'll need to retype it in this field to confirm it.

Enable Password to Power-On

After you have set a password in the previous fields, you can either enable or disable it. If this field is enabled, you need to type in the password every time the computer is turned on. If you do not type the correct password, the computer does not start.

SCU Password

When you select this option, a dialog box will pop up allowing you to set or customize a password to enter the System Configuration Utility program

Enter old Setup Password

This field will be available if you return to this dialog box after previously having set a SCU password. You will need to confirm your old password again before you can change it to a new one.

Enter new Setup Password

This field allows you to enter a new password to be used every time one tries to enter the System Configuration Utility. The password can be up to eight characters long, consisting of both letters and numbers.

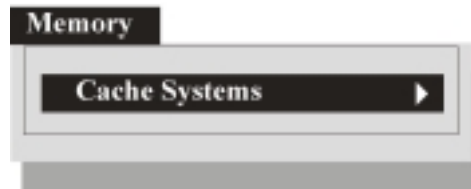
Verify new Setup Password

After you have entered a new password, you'll need to retype it in this field to confirm it.

Enable Setup Password

After you have set a password in the previous fields, you can either enable or disable it. If this field is enabled, you need to type in the password every time you try to enter the System Configuration Utility. If you do not type the correct password, you will not be able to enter the System Configuration Utility program.

Memory



Cache Systems

When you select this option, a dialog box will pop up allowing you to customize the system's use of Cache memory.

L1 Cache/L2 Cache

These boxes allow you to enable (*Write Back*) or disable Level 1 and/or Level 2 Cache.

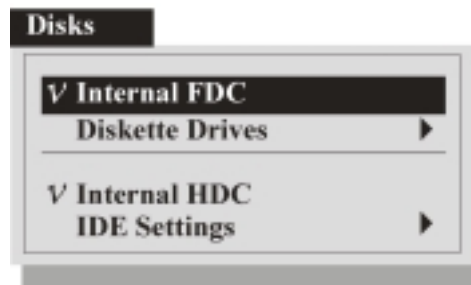
BIOS Shadow

This field allows you to enable or disable BIOS shadow memory caching.

Video Shadow

This field allows you to enable or disable Video shadow memory caching.

Disks



Internal FDC

You can either enable or disable this option. Set this option to enable in order to use the internal floppy disk drive.

Diskette Drives

When you select this option, a dialog box will pop up allowing you to set the types of diskette drives used with your system. You can set the diskette drive type to *None*, *1.44 MB*, or *2.88 MB*. The internal diskette drive is by default referred to as Drive A.

Internal HDC

You can either enable or disable this option. Set this option to enable in order to use the internal hard disk drive.

IDE Settings

When you select this option, a dialog box will pop up allowing you to set the IDE settings for the internal hard disk drive.

HDD Timing

This box allows you to select the speed of the internal hard disk drive. Leave this item at the default value, unless you change the internal hard disk drive. In that case, refer to the documentation that comes with the new disk drive to find the proper value for this item.

I/O 32 bit transfer

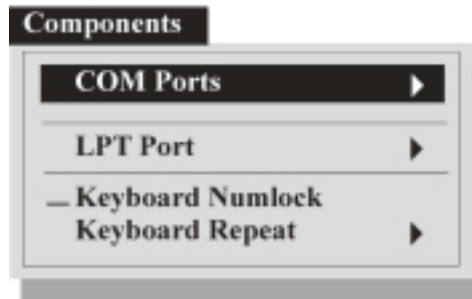
This field allows you to enable or disable 32 bits transfer mode while reading and writing to the internal hard disk drive.

HDD Block transfer

This field allows you to enable or disable block transfer while reading and writing to the internal hard disk drive.

Components

Use the components item on the menu bar to configure some of the peripheral devices found in your notebook.



COM Ports

When you select this option, a dialog box will pop up allowing you to enable/disable and to modify the settings of the different serial (COM) ports.

COM A I/O Settings

This option box allows you to enable or disable (*None*) serial port COM A. If you decide to enable this serial port you should allocate a serial and interrupt address to it.

COM B I/O Settings

This option box allows you to enable or disable (*None*) serial port COM B, by default used for the infrared port. If you decide to enable this serial port you should allocate a serial and interrupt address to it.

Mode Setting for COM B

This option box allows you set an infrared mode for serial port COM B.

DMA Setting For Fast IR

This option box allows you to allocate a DMA address to COM B when using Fast IR mode. If you are not using this infrared mode, this box will be grayed out.

LPT Port

When you select this option, a dialog box will pop up allowing you to customize the parallel port located on the rear of the notebook.

Port Address

This option box allows you to enable/disable (*None*) the parallel port in the back of the notebook. If you decide to enable the parallel port you should allocate an LPT and interrupt address to it. If you disable the parallel port, all other boxes on this page will be grayed out.

Port Definition

This option box allows you to set a port mode for parallel communications.

Interrupt Setting

This option box allows you to change the IRQ address for the parallel port.

DMA Setting For ECP Mode

This option box allows you to allocate a DMA address to the parallel port when using ECP mode. If you are not using ECP mode, this box will be grayed out.

Keyboard Num Lock

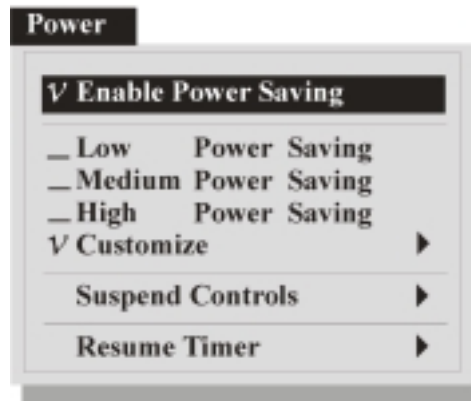
You can either enable or disable this option. If enabled the keyboard Num Lock function will always be on by default when you start the system.

Keyboard Repeat

When you select this option, a dialog box will pop up allowing you to customize the keyboard auto repeat rate and repeat delay. These options set the reaction speed of your keyboard to your typing.

Power

Use the power item on the menu bar to define the progressive power reduction of your computer when it is not being used.



Enable Power Saving

You can either enable or disable this option, which acts like a master switch for all the other power down functions on this menu. If you disable this field, none of the other system power downs in the setup program will function and will thus be grayed out. If it is enabled, you are able to set more specific power saving functions through the other options on the menu.

Low Power Saving

You can either enable or disable this option, which will be grayed out if the *Enable Power Saving* option above is not enabled. Enabling this option will set the power saving function of your system to a preset level that allows maximum performance and minimum power saving management.

Medium Power Saving

You can either enable or disable this option, which will be grayed out if the *Enable Power Saving* option above is not enabled. Enabling this option will set the power saving function of your system to a preset level that strikes a balance between performance and power saving management.

High Power Saving

You can either enable or disable this option, which will be grayed out if the *Enable Power Saving* option above is not enabled. Enabling this option will

set the power saving function of your system to a preset level that allows maximum power saving. If you take your notebook on the road, it is recommended you use this aggressive level of power saving to ensure the longest possible battery life.

Customize

When you select this item, a dialog box will pop up allowing you to manually customize some power down timeouts.

Video Timeout

Since the screen of your notebook consumes a lot of power, this field allows you to set a separate timeout value for the screen. You can set this field to either *Always On*, or a timeout between 30 seconds and 10 minutes. The screen will blank if the system has been idle for the selected period of time. Screen activity will be restored immediately when system activity is detected.

Disk Timeout

Since the hard disk of your notebook consumes a lot of power, this field allows you to set a separate timeout value for the hard disk. You can set this field to either *Always On*, or a timeout between 30 seconds and 2 minutes. The hard disk will be powered down if there has not been any disk access for the selected period of time. Hard disk power will be restored immediately when the disk is accessed again.

Global Timeout

This field allows you to set a timeout value for whole system to shut down power consumption. You can set this field to either *Always On*, or a timeout between 1 and 16 minutes. System power will be restored when system activity is detected.

Monitor Video Activity

You can either enable or disable this option. If enabled, the system will monitor if there is any activity on the video screen and allow this to interrupt the video timeout countdown.

Suspend Controls

When you select this item, a dialog box will pop up allowing you to manually customize some suspend timeouts.

Power Button Function

This field is used to set the activity linked to pressing the power button. If the field is set to *Suspend/Resume*, pressing the power button will suspend/resume

the system to/from the *Suspend Type* set below. If the field is set to *Power On/Off*, pressing the power button will actually power up/down the system.

Lid Switch Function

This field is used to set the activity linked to pressing the lid switch, as in closing the notebook screen cover. If the field is set to *Suspend/Resume*, closing/opening the screen cover will suspend/resume the system to/from the *Suspend Type* set below. If the field is set to *Blank LCD*, closing the screen cover will merely blank the video screen.

Suspend Type

This box allows you to choose the type of suspend mode the system should enter when a suspend event or demand occurs.

- ❑ **Suspend To Disk** – This is really another way of turning off your computer. When you suspend to disk, the contents of your computer's memory are copied to your hard disk drive as a file. When the contents of the memory have been safely stored to disk, your computer turns off. The next time the computer is turned on after a Suspend to disk, the file on the hard disk is quickly read back into memory. In just a few moments, your computer appears exactly as it was when you last suspended to disk.
- ❑ **Suspend To RAM** – In a suspend to RAM, the contents of your computer's memory are held intact, while practically all the rest of the components in your computer turn off completely, or reduce power consumption to a minimum. In a Suspend to RAM, your computer remains active but with the minimum possible power consumption. You can return the computer to full power by pressing the Space Bar. If you are operating your computer on battery power, a fully-charged battery can maintain a suspend to RAM for many hours.

Suspend Timeout

This value sets the timeout for the system suspend mode. If the system has been idle for the selected period of time, the system will enter the user defined suspend mode. The value can be set to either *Never*, or to a value ranging from 1 to 30 minutes.

Resume Timer

When you select this item, a dialog box will pop up allowing you to set a specific date and time for the system to wake up from suspend mode.

Alarm Resume

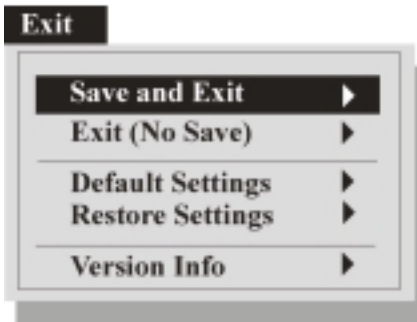
You can either enable or disable this option. If this field is enabled, the system will wake up from suspend mode at the date and time set below. If the field is set to disabled, the date and time set in the fields below will have no effect.

Resume Day/Resume Hour/Resume Minute

These fields allow you to set a specific date and time for the system to wake up from suspend mode.

Exit

When you have made changes to the setup utility, either press the [Esc] key, or highlight the Exit option on the menu bar.



Save and Exit

When you select this item, a dialog box will pop up asking you to confirm your choice to save the changes you just made and restart the computer. This dialog box will also appear if you press the [Esc] key in the main screen area of the system configuration utility.

Exit (No Save)

When you select this option, a dialog box will pop up asking you to confirm your choice to discard any changes you just made and restart the computer. The computer will then restart using the old values.

Default Settings

When you select this option, a dialog box will pop up asking you to confirm your choice to load the default values for all fields. The computer does not restart. You must use the Save and Exit option above to restart the computer using the default values.

Restore Settings

When you select this option, a dialog box will pop up asking you to confirm your choice to restore the current setup values to the original custom values. The computer does not restart. You must use the Save and Exit option above to restart the computer using the default values.

Version Info

When you select this option, a dialog box will pop up informing you about the version of the System Configuration Utility you are using.